

Price One Penny.

THE LUTON NEWS
Football Handbook

.. 1906—1907 ..

Ernest Gibbs,

Business Transfer Agent, Valuer,
.. and Public House Broker. ..

OFFICE:
19, UPPER GEORGE STREET, LUTON.

IF YOU WANT TO
Buy or Sell a Business,

Call on E.G. without delay.

1897
1897
TELE. 41.

CHEAPEST
HOUSE FURNISHERS

. In the District. .

• ——— •
J. Webdale & Sons,

Wellington Street,

Luton.

TELE. 41.

Tea! Tea! Tea!

The CUP of Health - $1/6$ per lb.

The CUP of Strength - $1/4$ per lb.

The Economic CUP - $1/2$ per lb.

— — — — —
The above need no competing for,
only see to it you go straight for
Goal, i.e.,

E. CULHAM

The People's Grocer,

Langley Street Bailey St.,

— — — — —
LUTON. — — — — —

THE
New Football Ground

Is only a Short Distance
from the

Leading Temperance Hotel and Restaurant,

I.E.,

THE FRANKLIN

Front of the Town Hall,



**George Street,
LUTON.**

The Best of Refreshments.

Splendid Accommodation.

Visiting Teams well catered for.

Prices very Moderate.

This House is well known and Specially
Recommended.

J. C. LEWIS, PROPRIETOR.



Luton Town Football Club.

—o—

IN the introduction to the "LUTON NEWS" FOOTBALL HANDBOOK last year, we had to regret that the preceding season had not been a favourable one for the Town Club from a playing point of view, Luton having for the first time figured in the "bottom two" on the Southern League table. The one satisfactory feature was that there had been but little falling off in the gate-money, and, bearing this in mind, we expressed the hope that on a new ground, and, excepting the half-back line, with a new team, the success, so long merited, would at last be attained. The hope was abundantly fulfilled. The team did exceptionally well, the gate-money went up to a point never before reached, and the directors had the unusual experience of finishing with a balance in hand. The wages bill amounted to £2,137 19s. 7d., an increase of about £300 on the previous year, but the gate receipts went up by about £1,000, the total income being £3,554 4s. 11d., and the net profit on the season's working was £169 6s. 4d. The extent to which the popularity of the game has increased may be judged from the fact that sixteen years ago, when the Club concluded its career as a purely

For Unshrinkable

Flannel Shirts

AND

Underwear

. IN .

Cashmere, Merino,
and Ram Fleece.

GO TO

For Dainty

Ties & Scarfs

The Latest in

Collars, Gloves

. AND .

Mufflers


GO TO

OUTFITTER,

TAILOR and

28, Wellington Street,

LUTON.

S.  **BASSETT,**

The Newest in

Hats and Caps,

JUVENILE,
YOUTHS'
and MEN'S

CLOTHING

. AT .

Popular

.. Prices.

BASSETT'S

RAINPROOF

Mackintoshes.

AND

Overcoats . .

21/-

Are the Best Value
in the Trade.

a amateur organisation, the takings at the gate for the whole season realised less than a hundred pounds.

Luton, who were one of the first Clubs in the Southern League, seceded in 1896, and a year later joined the Second Division of the English League, but the experiment was not altogether successful, and in 1900 they went back to the old love, a step which there has been no reason to regret. The Southern League is now a power in the land, many of the players are among the very best in the country, and considering the strength of the Clubs, financially and otherwise, opposed to them, it was no small credit to Luton last season to finish up fourth on the list. So well satisfied were the directors, that at the conclusion of the season they signed on practically the whole of the players, the only notable exception being Blackett. His place has been well filled, and with the other men who have been secured, there is every reason to anticipate another successful season.

THE CLUB OFFICIALS.

—o—

DIRECTORS:

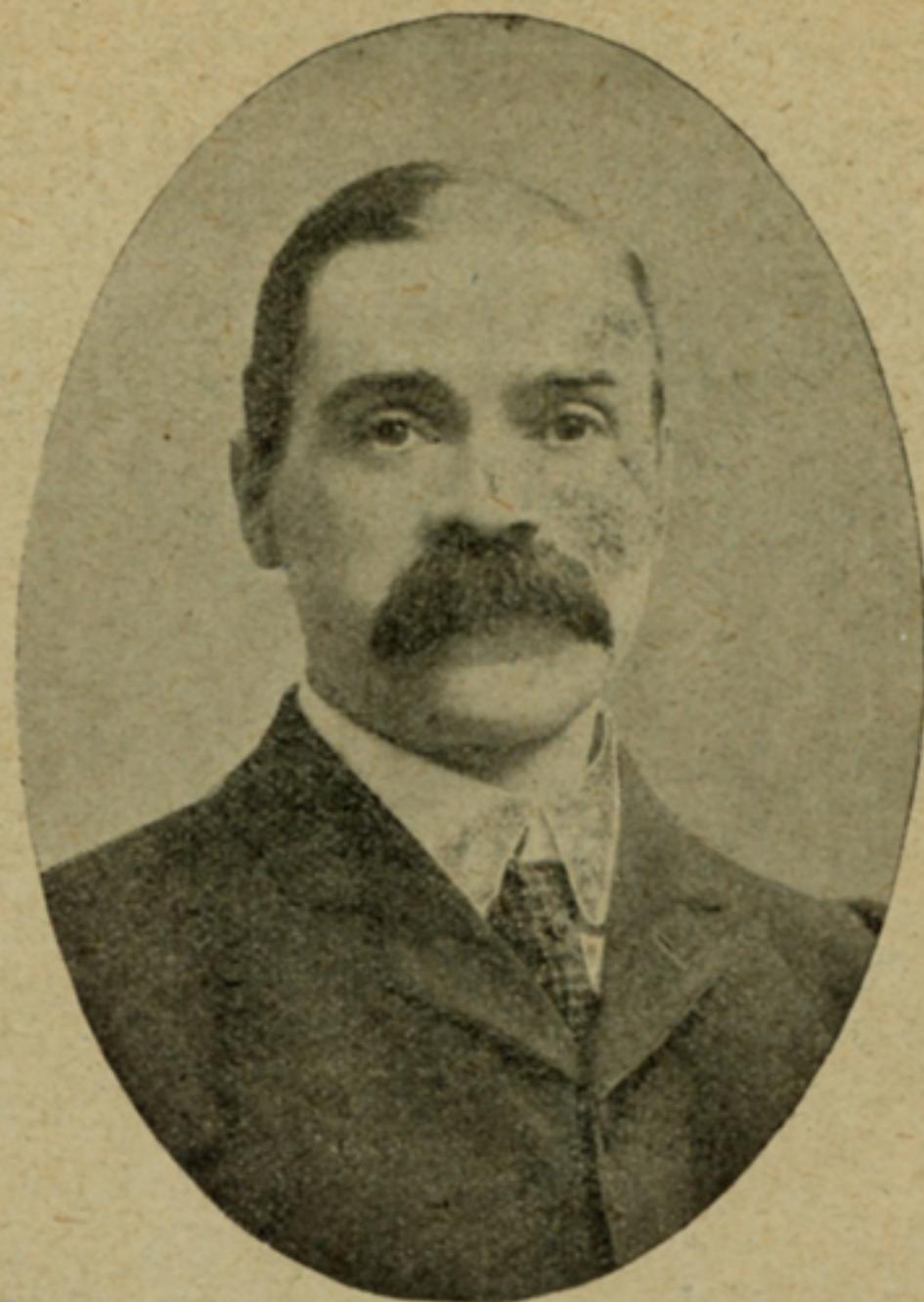
H. ARNOLD (CHAIRMAN),
J. SQUIRES, E. GIBBS, H. T. SHACKLETON,
W. CARTER, H. SMART, W. J. ALLEN,
F. GENTLE, G. SMART, I. SMITH, A. E. PILGRIM,
W. SOPER.

SECRETARY:—CHAS. GREEN, 81, Church St., Luton.



SEE OUR
SPECIAL SHOW
—OF—
Jackets .
AND
. Dresses.

ALEXANDER & SON,
33, Wellington Street,
. . . LUTON.



Photo]

[Mr. W. H. Cox

COUNCILLOR H. ARNOLD,
Chairman Luton Town Football Club and Athletic
Company, Ltd.

W. A. Knowles,

Tailor, Hatter,
and Hosier,

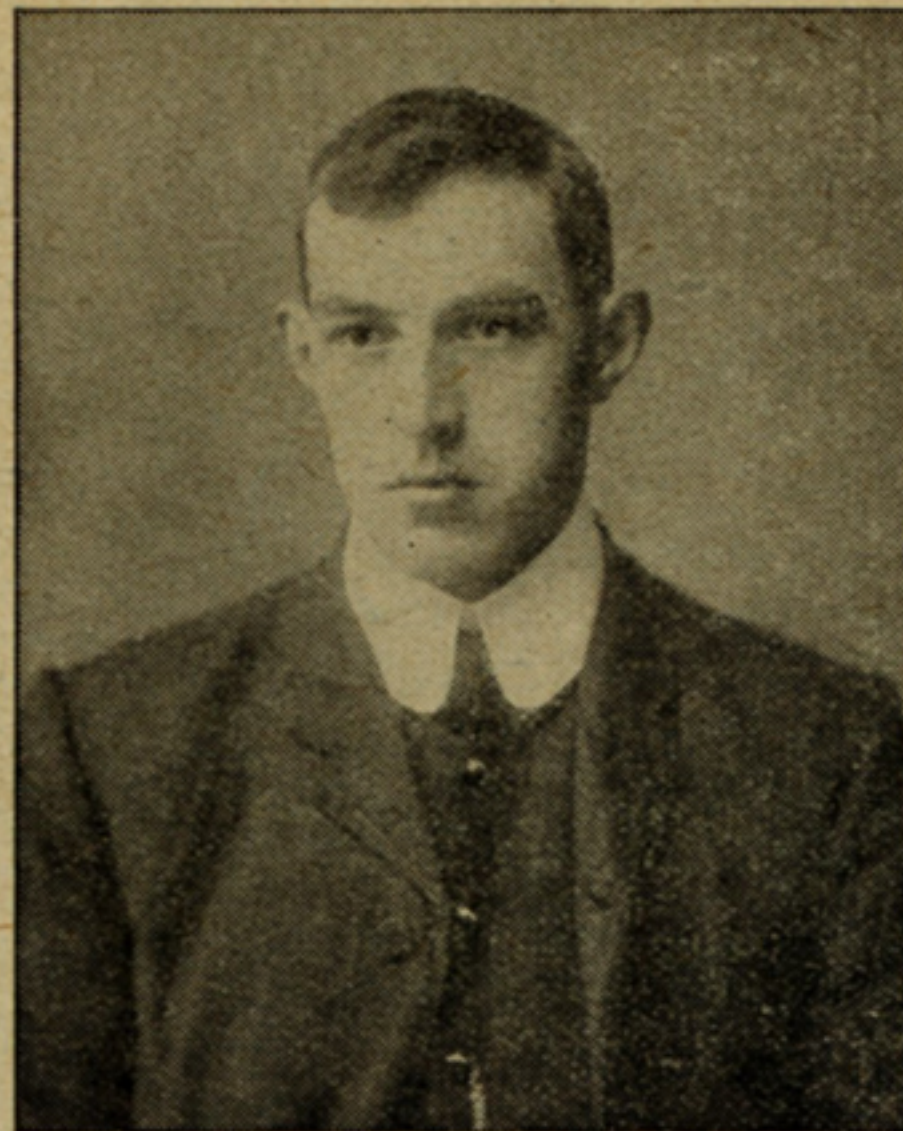
30, Manchester Street
LUTON.

THE CHEAPEST AND BEST HOUSE FOR
GENTS' OUTFITS of every description.

See our Pattern Sheet of
Coloured Football Shirts.

NEWEST DESIGNS.

FOOTBALL KNICKERS IN GREAT
VARIETY.



Photo

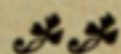
PETER PLATT, *A. J. Anderson and Co.*

Who came to Luton last September, has had experience in First League football, and played so consistently last season that his decision to stay in Luton gave general satisfaction. Previous to coming to Luton he kept goal for Liverpool for two seasons, and had also played for Blackburn Rovers. He is the proper height for a goal keeper, being 5ft. 11in., and his weight is 12st. 8lb. He was born on January 23, 1883, and is therefore 23 years of age.

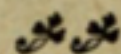
We have increased our Staff of Tailors, and also enlarged our Workshop, and are now in a position to make the very best goods possible. . .



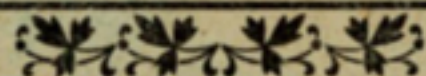
We Cater for all Classes, for Cash only.



Private Fitting Room.

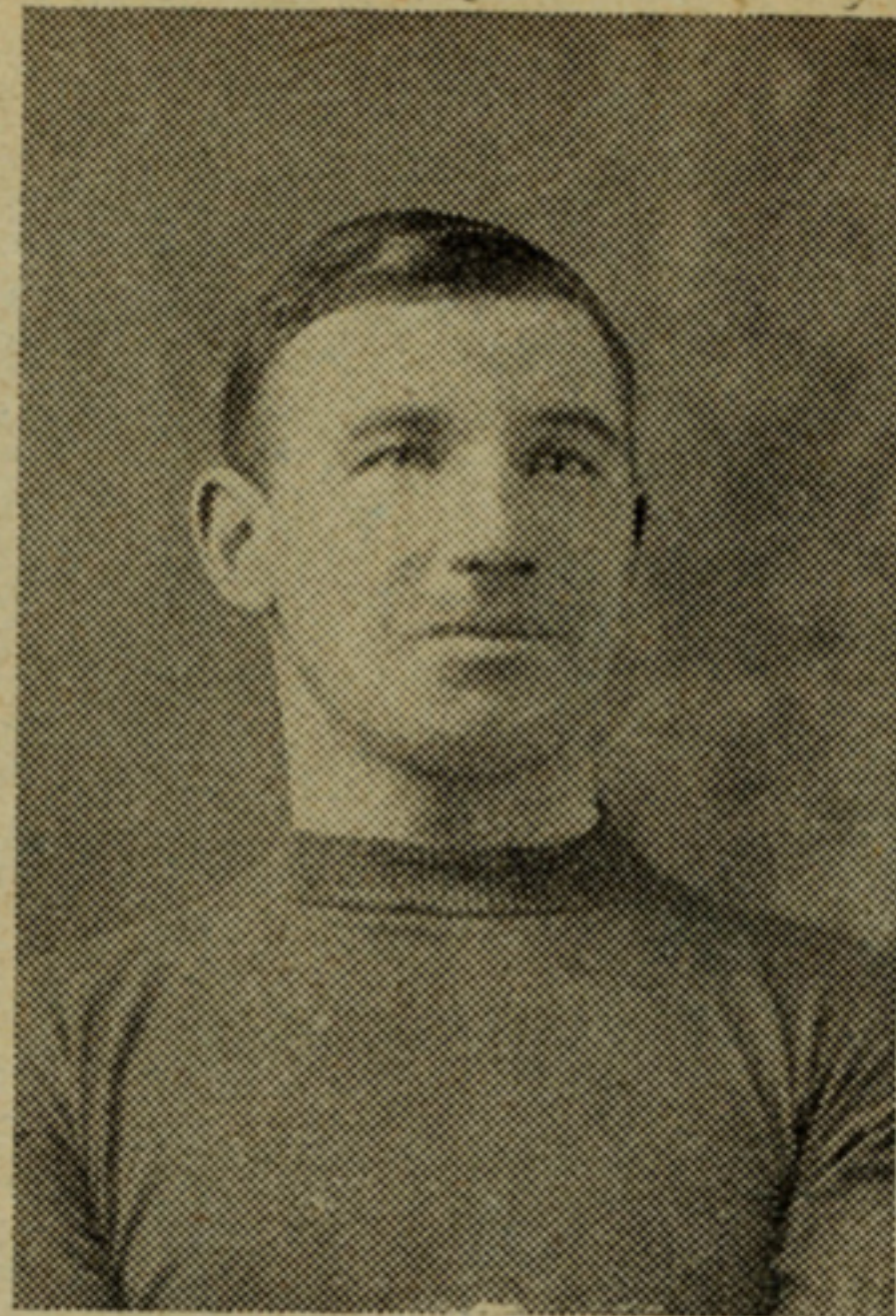


Fred. Cook,



Tailor, Hosier, &c.,

1, High Town Road, LUTON.

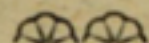


JOHN HOGG.

SINGULARLY enough, Hogg, who is to fill Blackett's place at right back, also comes from Middlesbrough. He is, however, a native of West Calder, in Scotland, and played for the club of that name when 17 years old. After remaining with them a season, he was induced to throw in his lot with the Heart of Midlothian, with which club he spent a couple of years, and then transferred his services to Middlesbrough, where he stayed four seasons. Hogg comes to Luton with splendid credentials. He is 24 years of age, stands 5ft. 10½in., and weighs 13st.

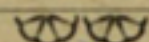
Football!

Telegrams of all Luton's away Matches
received by E. PRIDMORE.



Before going to the Match, be sure you get one of
.. E. PRIDMORE'S ..
BLACK FRIAR'S CIGARS.

2d. each, 7 for 1s.



For a **Reliable Watch,**

TRY ONE OF

E. Pridmore's Waltham Levers, 30/- each.

CANNOT BE BEATEN.

E. PRIDMORE, Watchmaker,
Jeweller and ..
Tobacconist.

Chapel Street, LUTON.

WATCH REPAIRS A SPECIALITY.



B. JACKSON,

ANOTHER right full back, was born in Manchester 22 years ago. At the age of 15, he played for Tonge "A," and afterwards for Berry's "A," whom he helped to win the Manchester League and the Manchester Cup. Last season he played for Atherton Church House, a Lancashire Combination Club. He is 5ft. 9½in. in height and weighs 11st. 8lbs.

For Domestic and

General Woodware

WHOLESALE AND RETAIL,

Th. Spratley & Sons,

18 and 20, Barbers Lane,

LUTON.

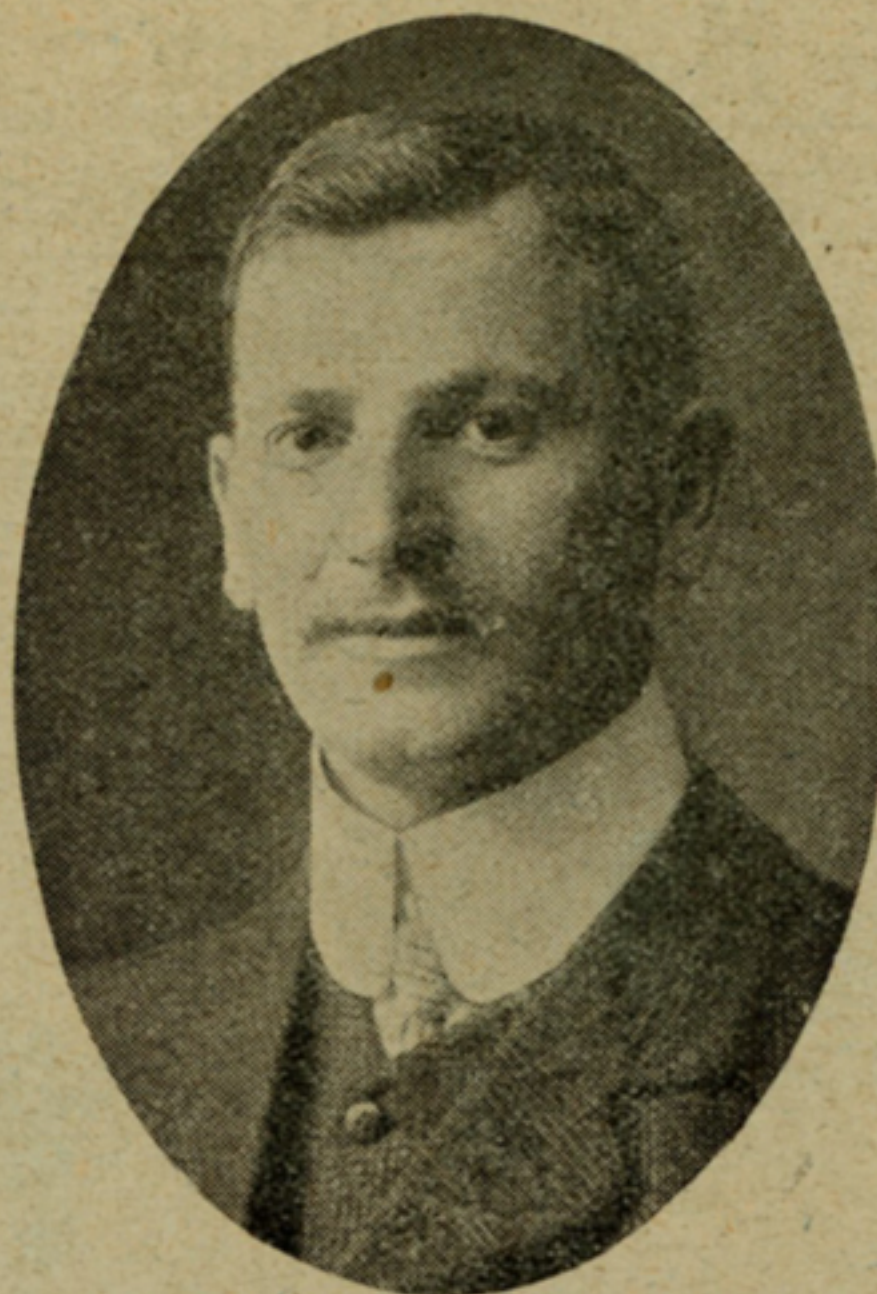
HOUSE STEPS,
CLOTHES HORSES,
LINE POSTS,
COPPER LIDS,
CHAIR SEATS,
PASTE BOARDS,
SLEEVE AND
SKIRT BOARDS,
WASHING TUBS,
PEGGIES, &C.,
BREAD BOARDS,
BUTCHERS' TRAYS,
MEAT SAFES,
MILK YOKES.

CALL & INSPECT.

Cheapest in the Trade.

FANCY CABINETS
IN OAK, . . .
SPECIAL LINE
GOOD QUALITY,
ALSO IN WHITEWOOD
CORNER CABINETS, &C
BOOK SHELVES,
DRAWING BOARDS,
COLLECTION PLATES.
FANCY TURNINGS,
OF EVERY . . .
DESCRIPTION,
HANDLES, ALL SORTS
AND SIZES.

INDIAN CLUBS . . . from 2lbs. to 14lbs., polished.
WOOD DUMB-BELLS . . . 4ozs. to 16ozs., "
IRON . . . 11lb. to 14lbs., "
Special Terms for Schools, &c.



Photo

WILLIAM MCCURDY. *A. J. Anderson & Co.*

BORN at Brighton 30 years ago, McCurdy made a reputation for himself as a full back whilst playing in the Vale of Clyde. In 1899, despite offers from 3rd Lanark and the Clyde, he came south, and for two seasons rendered excellent service to Luton. He then migrated to Nottingham, where he joined the Forest, and afterwards became identified with Tottenham Hotspur. He is a very capable player, and last season delighted the supporters of the Luton Club by his strong and consistent play and unfailing good temper. His height is 5ft. 5in., and weight 12st.

S. Barrow's

GROCERY STORES

For Finest Coffee

Roasted on the
Premises.

A DAILY LUXURY



. FOR .

Choice Blended TEAS.

FOR

Pure China Teas.



We are Noted

. FOR .

Finest FRESH BUTTER.

Buxton Rd. & Dumfries St.,
Luton.



FRED HAWKES.

AGAIN Luton will be represented by a local half-back line, one of the smartest members of which is Fred Hawkes, who is a native of the town and is now 25 years of age. He first played in the Christ Church School team, afterwards with the Stanley (now defunct), and then with the Luton Reserves. His ability soon attracted notice, and for the past five seasons he has been a regular member of the first team. Fred has been the recipient of several offers from the North, but, fortunately for Luton, they have all been declined, and this season he and White are to be given a joint benefit. His height is 5ft. 8in., and weight 11st.

Blundell Brothers,

(LUTON) LIMITED.

All FOOTBALLERS
should wear our
NOTED SUITS and
OVERCOATS.

Suits Ready-to-wear
14/11 to 42/-

OVERCOATS, . . .
1906 Styles,
16/6 to 45/-
See Windows!

We are Noted for
Juvenile Clothing.

FOOTBALL SHIRTS!
FOOTBALL KNICKS!
FOOTBALL HOSE!

Special Quotations to
Clubs. . . .

New Designs and
Patterns.

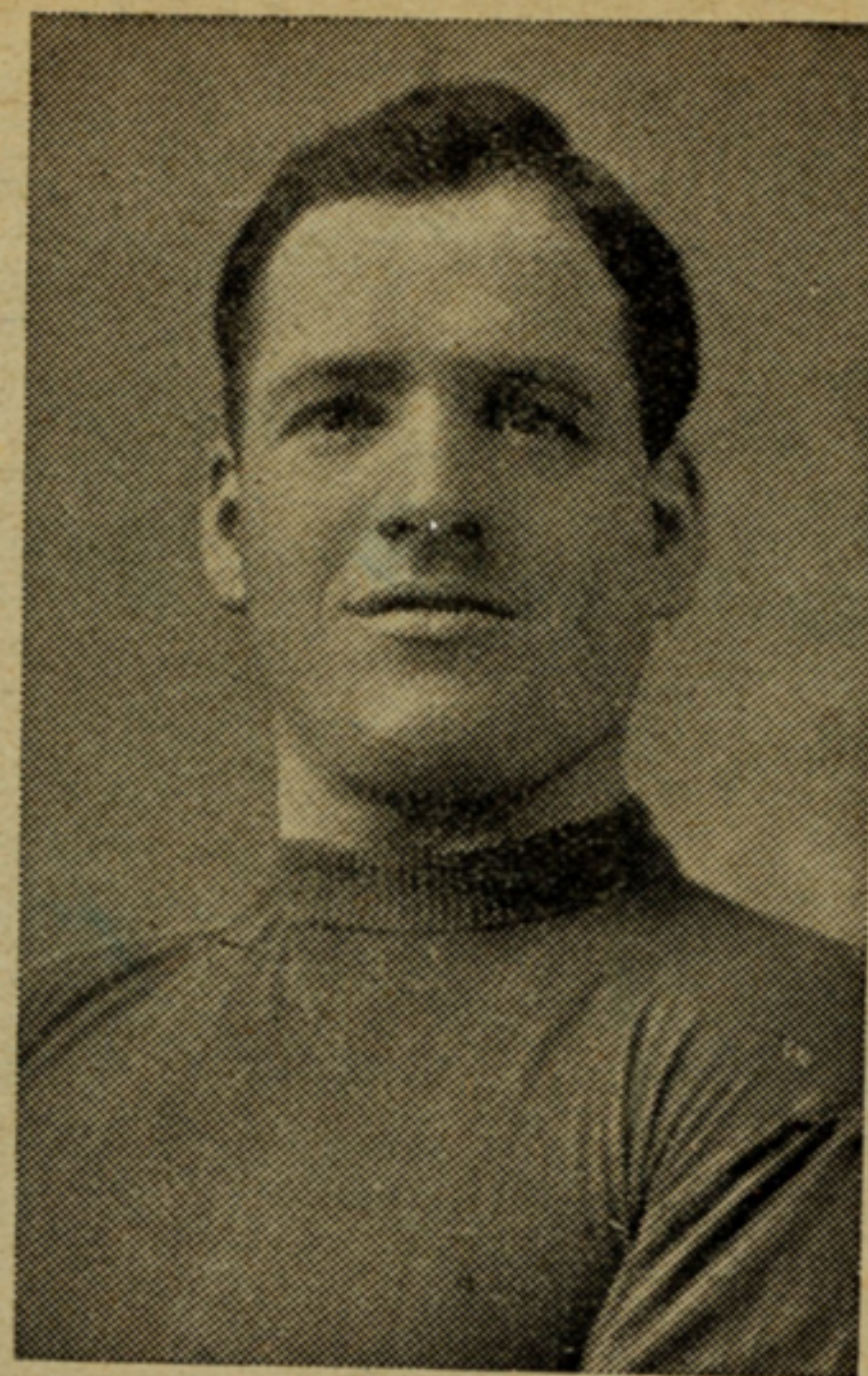
ESTIMATES FREE.

Football Clubs are . . .
invited to inspect
OUR SPECIALITIES.

*General Drapers, Outfitters, Complete House
Furnishers and Removal Contractors,*

George Street, Cheapside,
and Chapel Street,

LUTON.



A. JONES.

POPULARLY known as "Bullet" Jones, is a native of Staffordshire. His first club of note was West Bromwich Albion, and afterwards from 1902 to last year, he was identified with Middlesbrough. He has played in a semi-final for the English Cup (1901, against Tottenham Hotspur), in a North v. South match, and was first reserve for England against Scotland in 1903-4. His position is centre-half. Jones is 28 years of age, stands 5ft. 7½in., and weighs 11st. 12lbs.

. Wedding Presents. .

A Piano is one of the most Valued
and Appropriate of all
Wedding Presents.

PIANOS OF REPUTE

By the foremost English and Continental
Manufacturers, may be seen at

S. Farmer & Co's.

SOLE AGENTS FOR

'Chappell' Pianos

The Artist's English
Piano.

Bechstein Pianos

The Great German
Piano.



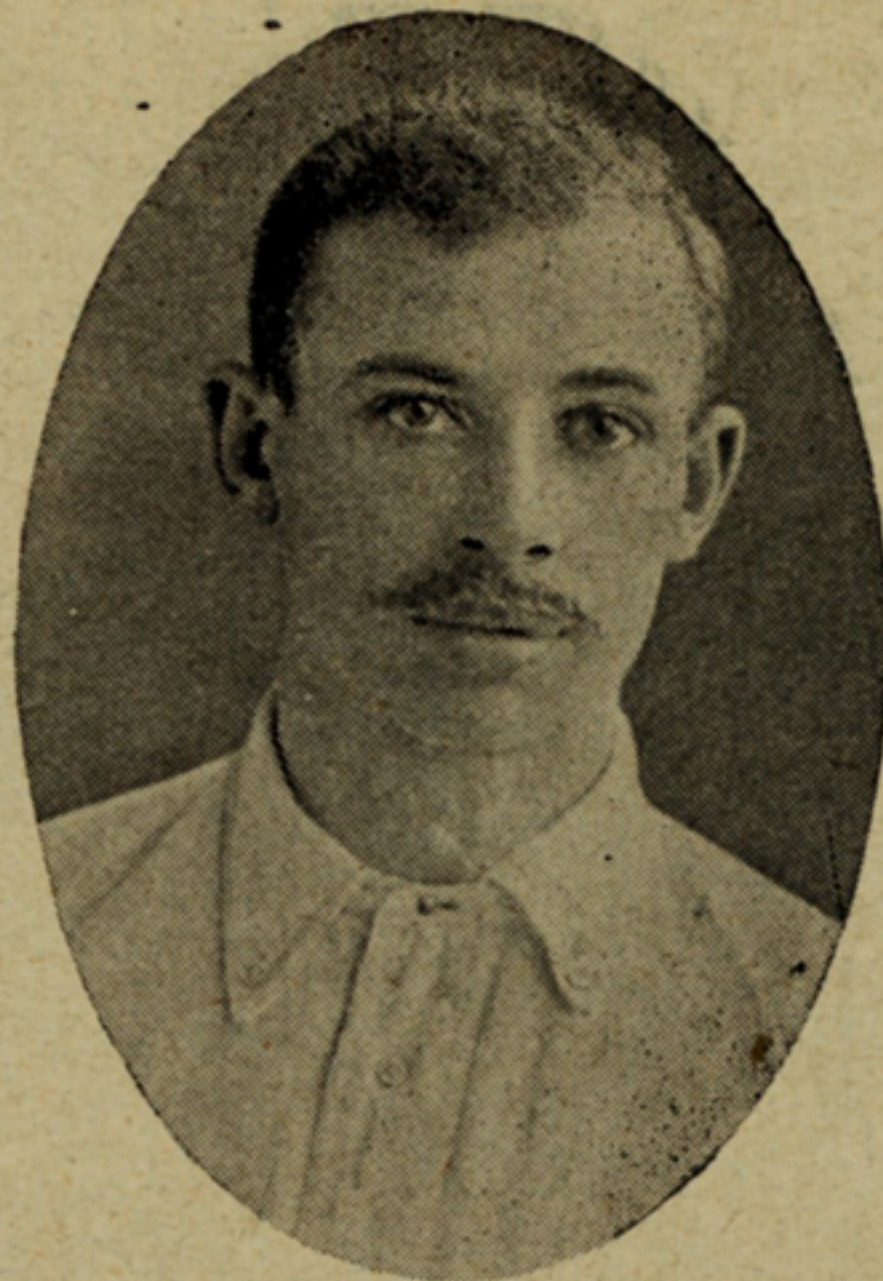
Any Instrument Supplied on the Gradual
Payment System.

S. FARMER & CO.,

2, WELLINGTON ST.,

Branch:
3, West Street, Dunstable.

LUTON.



Photo

FRED WHITE.

Mr. W. H. Cox.

A NATIVE of Dunstable, Fred White came to Luton at an early period of his career, and worked his way up through the ranks of the juniors till he secured a place in the Town Reserves. His good work speedily earned promotion, and for the first team White has made a name for himself as a half-back whose inexhaustible vigour and worrying tactics may be depended upon to spoil the play of almost any centre forward. He is 26 years of age, stands 5ft. 7in., and weighs 10st. 4lbs.

TO REACH THE GOAL

OF

Perfection in Footwear

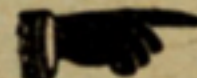
WEAR ONLY

FREEMAN, HARDY & WILLIS'S

FAMOUS

Boots and Shoes.

38, GEORGE ST., LUTON.

 Grand Assortment of Football Boots


From 4/11½.



ROBERT HAWKES.

If ever there was a genuine amateur, who played for the love of the game and that alone, it is Bob Hawkes. Several tempting offers have been made him by First League Clubs, but he has refused them all, and lovers of Luton football owe him a debt of gratitude for his steadfast adherence to the Town Club. A native of Breachwood Green, he came to Luton as a boy, played first for his school and afterwards for a couple of junior clubs. He then had three seasons with the Town Reserves, and for the last four years has been a regular member of the first eleven—last season being elected captain. He plays left-half, but can also render a good account of himself in the forward line. He is 25 years of age, stands 5ft. 8½in., and weighs 10st. 8lbs.

EVERY
REQUISITE
FOR
FOOTBALL.



BEST
QUALITY
and VALUE
for MONEY.

The New Hudson Sports Depot

(LLOYD, PARTRIDGE & CO.)

A Fine Range of Footballs:

THE LEAGUE KING	10/6	§	THE GOALFINDER	8/3
THE NEW HUDSON		§	THE REGIMENTAL	7/6
CHAMPION ..	9/6	§	THE CLYNKER ..	6/9
THE REFEREE ..	8/11		THE WITCH..	5/11

CHEAP LINE, 1/11 to 4/3.

Also Footballs by SUGG, GUNN & MOORE, BRYAN,
DUKE and SHILLCOCK.

**BLADDERS, SHIRTS, KNICKERS, BOOTS
SHINGUARDS, GOAL POSTS & NETS,**

Referees' Whistles, &c., in good Variety.

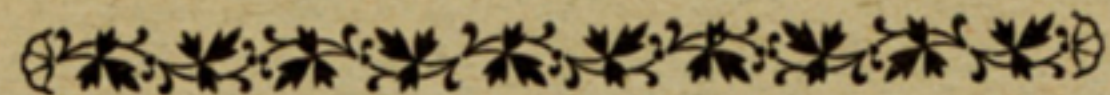
~ **LISTS FREE.** ~

Chapel Street, Luton.



PATRICK J. GALLACHER.

BORN at Parkhead, Glasgow, 24 years ago, Gallacher took to football early in life, playing first for Parkhead Rangers, then for Glasgow Ashfield, and afterwards spent three seasons with Duntachur Hibs. In 1904-5, he had offers from Edinburgh Hibernians and Sunderland, but decided in favour of Tottenham Hotspur, who also approached him. He was signed on for Luton last season as outside right, but developed into a general utility man. He stands 5ft. 11in., and weighs 13st. 2lbs.



To Ensure a Goal

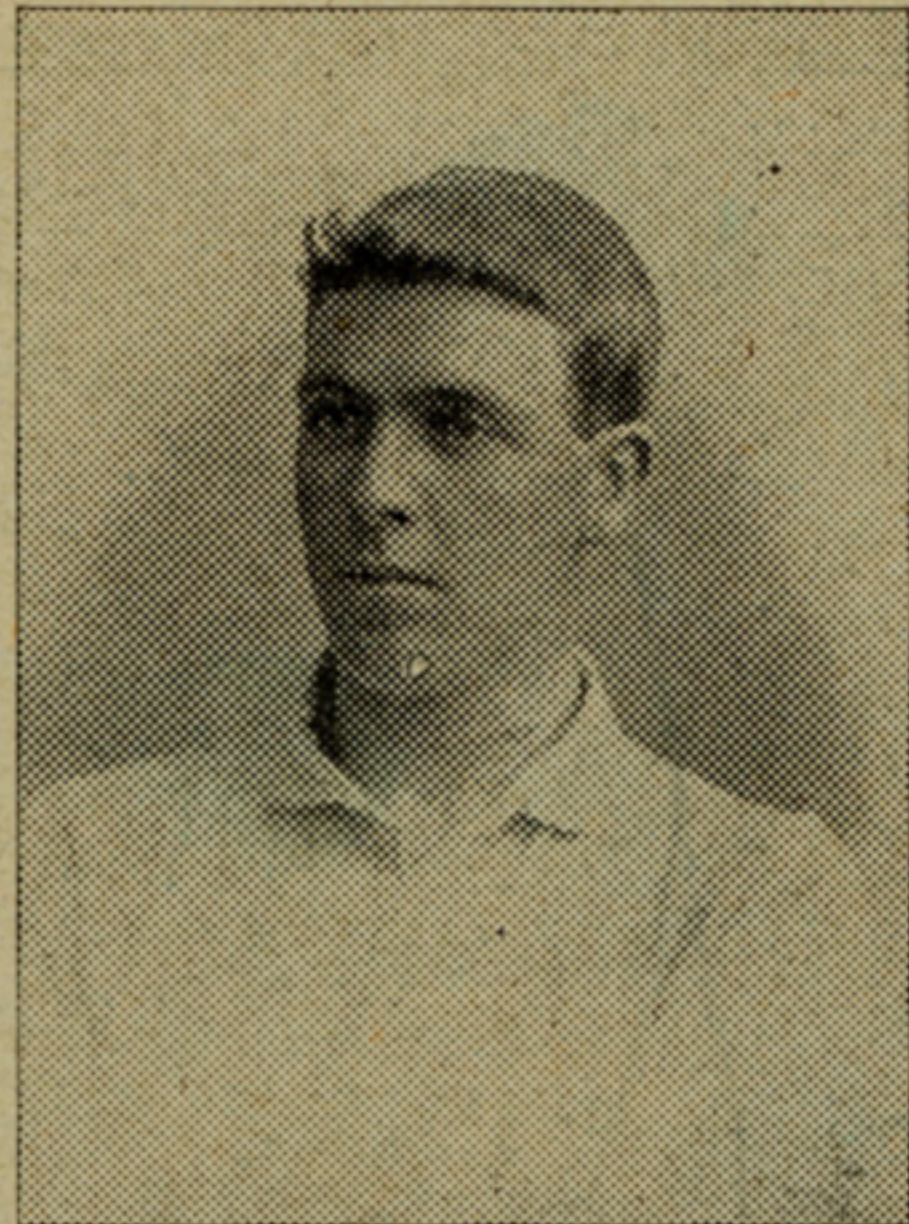
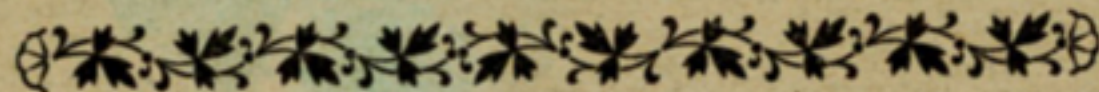
KICK WITH

W. BIGG'S

Football Boots.

We supply the . . . We can .
Luton Town Team. . . supply you.

Try our Mercer.



ALF WARNER

Is a native of Nottingham, having been born there 27 years ago. After playing for some time in junior football, he signed on for Notts County, and when given a place in the first team, he had the distinction of being the youngest player in the League (Div. I.) In 1900 he was chosen to play against the Scottish Union, but a Cup-tie engagement prevented his appearance. In 1902, Warner joined Tottenham Hotspur and played many brilliant games for them during his three years' connection with that club. He is at home in most forward positions, and on his day wants a lot of beating. His height is 5ft. 7in., and weight 11st.

CITIZEN **See** Esperansa
for . . . **Windows** Federated .
Gents. . **for Ladies.**

REPAIRS OUR SPECIALITY.

Bespoke orders receive every attention.

Leather and Grindery,



Lawson & Son,

Boot Manufacturers,

Manchester Street.

Football Boots!

Football Boots!

Football Boots!

ALSO MADE TO MEASURE.

Players requiring special Size or Fitting
should pay us a visit.



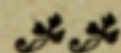
JOE SCHOFIELD.

Is a native of Wigan. At the age of 16 he had a trial for the Blackburn Rovers, and afterwards played for Wigan County in the Lancashire League. As a professional he played forward for two seasons for Manchester United, and then was transferred to Stockport County, where he was captain last year, and took part in no fewer than 34 League matches. His favourite position is outside right, and he is said to be remarkably fast. He is 23 years old, stands 5ft. 7in., and weighs 11st.

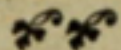
Orient Cafe

44,

GEORGE STREET, LUTON,
Midway between Bell and George Hotels.



The Popular Cafe for Footballers.

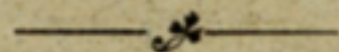


High Class Refreshments

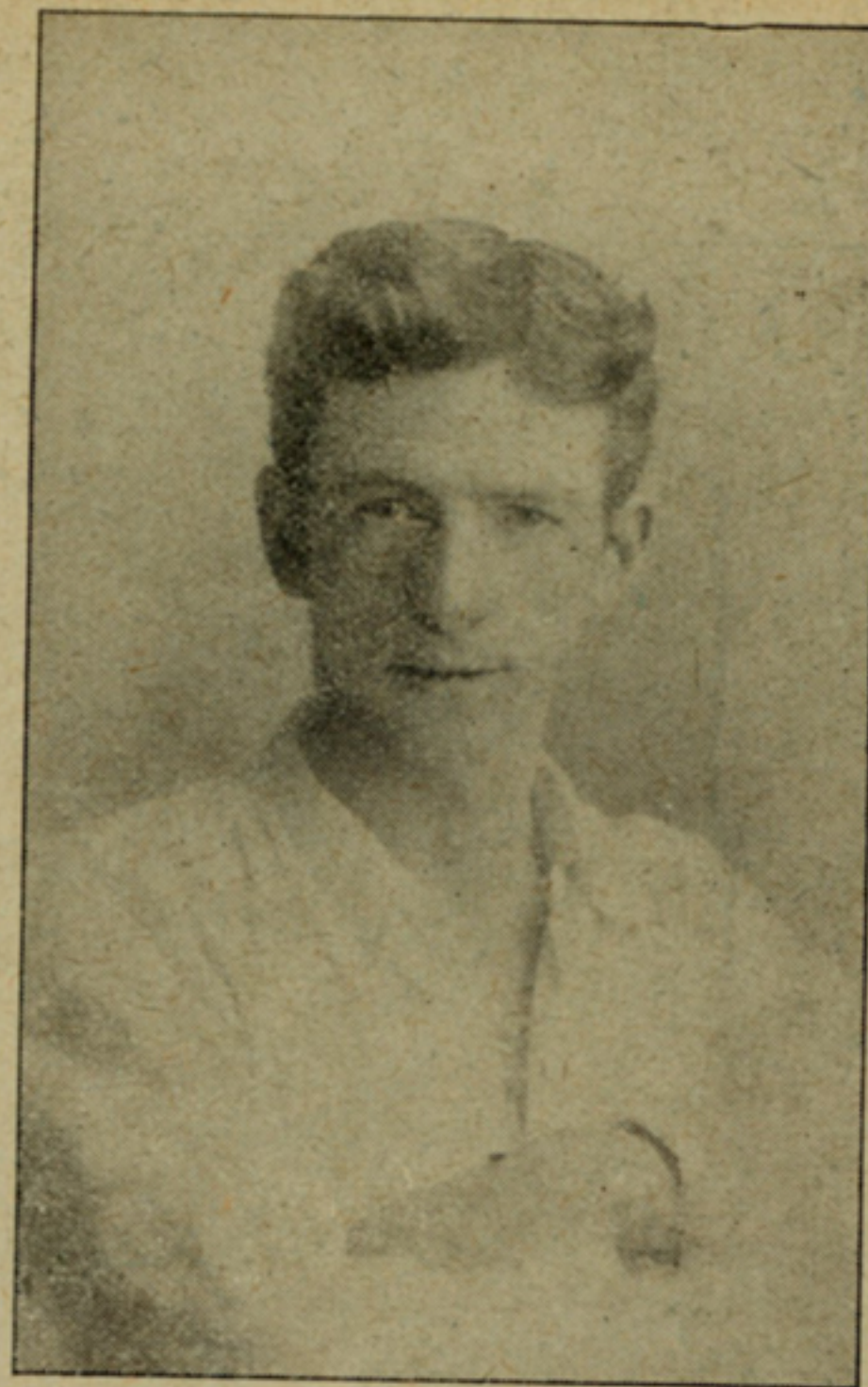
At Moderate Prices.

EVERY CONVENIENCE FOR VISITORS.

Soups, Fish, Joints, Entree,
Sweets. Teas a Speciality.



Proprietor : **J. W. Whitworth.**



A. MACDONALD.

MACDONALD has had eight years experience of professional football, and during that time has played for Partick Thistle, Everton, Southampton, Portsmouth, Wellingborough and Luton. His favourite position is inside left, but last season he usually operated at inside right. He is 26 years of age, is 5ft. 9½in. in height, and weighs 11st.

BELL & Co.,

Chapel St. and Stuart St.,

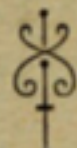
Football ❧

Outfitters,



Rock Bottom

Prices.



Contractors to Luton Town Football Club

❧
TAILOR,

and

BREECHES

MAKER.



ESTABLISHED 1891.

W. Bell,

CHAPEL ST.



Photo

ALEXANDER BROWN. — *A. J. Anderson & Co.*

"SANDY" BROWN, Luton's International centre-forward, was born at Glenbuck, Ayrshire, 28 years ago, was known as the "Glenbuck goal-getter" when only 15 years of age, and at 17, he joined St. Bernard's as a professional. He was soon induced to cross the border, however, and played three seasons for Preston North End. He then went to Portsmouth for a season, played for Tottenham two seasons, returned to Portsmouth, and afterwards went to Middlesbrough. He was chiefly instrumental in winning the English Cup for Tottenham, his goal scoring in the Cup-ties being phenomenal. His first International was at Glasgow, on the occasion of the Ibrox Park disaster, and he played against England in 1903-4. Brown stands 5ft. 9½in., and weighs 12st.

Luton Town Football Club.

FIXTURE LIST, 1906-7.

DATE.	OPPONENTS.	GOALS FOR AGST.
Sep. 1 Sat.	Queen's Park Rangers, S.L. <i>h</i>	1
" 5 Wed.	Brighton and Hove, U.L. <i>a</i>	
" 8 Sat.	Fulham, S.L. <i>a</i>	
" 10 Mon.	Watford, U.L. <i>h</i>	
" 15 Sat.	Southampton, S.L. <i>h</i>	
" 19 Wed.	Watford, U.L. <i>a</i>	
" 22 Sat.	West Ham, S.L. <i>a</i>	
" 24 Mon.	Brighton and Hove, U.L. <i>h</i>	
" 29 Sat.	Tottenham Hotspur, S.L. <i>h</i>	
Oct. 1 Mon.	New Brompton, U.L. <i>a</i>	
" 6 Sat.	Swindon, S.L. <i>a</i>	
" 8 Mon.	Crystal Palace, U.L. <i>h</i>	
" 13 Sat.	Norwich City, S.L. <i>h</i>	
" 15 Mon.	Leicester Fosse, F. <i>h</i>	
" 20 Sat.	Bristol Rovers, S.L. <i>a</i>	
" 22 Mon.	Leyton, U.L. <i>h</i>	
" 27 Sat.	Crystal Palace, S.L. <i>a</i>	
Nov. 1 Thur	Norwich City, U.L. <i>a</i>	
" 3 Sat.	Brentford, S.L. <i>h</i>	
" 5 Mon.	New Brompton, U.L. <i>h</i>	
" 10 Sat.	Millwall, S.L. <i>a</i>	
" 12 Mon.	Norwich City, U.L. <i>h</i>	
" 17 Sat.	Leyton, S.L. <i>h</i>	
" 24 Sat.	Portsmouth, S.L. <i>a</i>	
Dec. 1 Sat.	New Brompton, S.L. <i>h</i>	
" 8 Sat.	Plymouth Argyle, S.L. <i>a</i>	
" 10 Mon.	Hastings & St. Leonards, U.L. <i>h</i>	
" 15 Sat.	Brighton and Hove, S.L. <i>h</i>	
" 22 Sat.	Reading, S.L. <i>a</i>	
Xmas Day..	Watford, S.L. <i>h</i>	
Boxing Day	Northampton, S.L. <i>h</i>	
Dec. 29 Sat.	Queen's Park Rangers, S.L. <i>a</i>	

PRINTING—Cheap. Quick, Good.

"LUTON NEWS" PRINTING WORKS,

MANCHESTER STREET, LUTON.

Tel. No. 121.

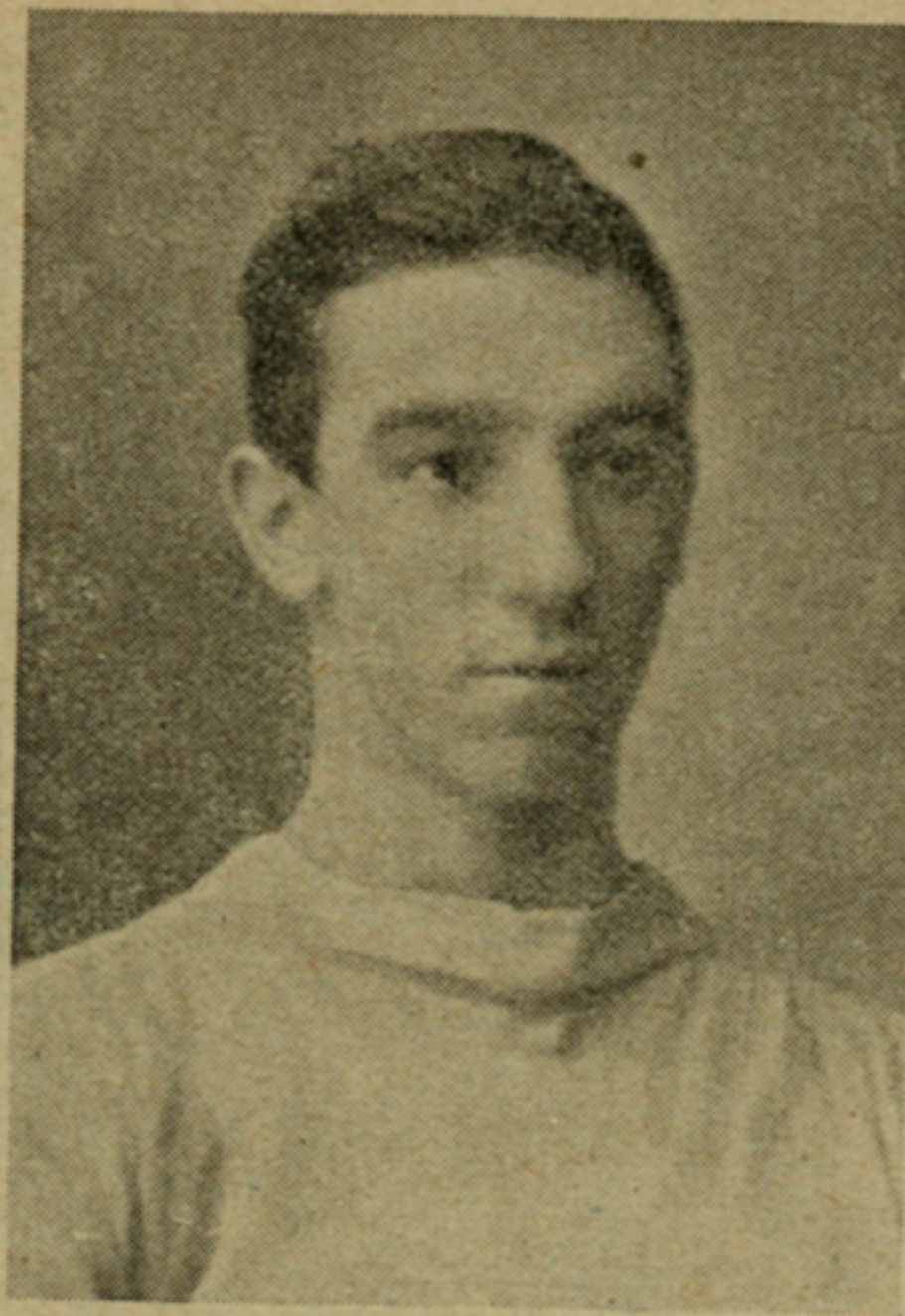
DATE.	OPPONENTS.	GOALS FOR AGST.
Jan. 5 Sat.	Fulham, S.L. <i>h</i>	
" 12 Sat.	F.A. Cup	
" 19 Sat.	Southampton, S.L. <i>a</i>	
" 24 Thur	Leyton, U.L. <i>a</i>	
" 26 Sat.	West Ham, S.L. <i>h</i>	
Feb. 2 Sat.	Tottenham Hotspur, S.L. <i>a</i>	
" 6 Wed.	Hastings & St. Leonards, U.L. <i>a</i>	
" 9 Sat.	Swindon, S.L. <i>h</i>	
" 14 Thur	Crystal Palace, U.L. <i>a</i>	
" 16 Sat.	Norwich City, S.L. <i>a</i>	
" 23 Sat.	Bristol Rovers, S.L. <i>h</i>	
Mar. 2 Sat.	Crystal Palace, S.L. <i>h</i>	
" 9 Sat.	Brentford, S.L. <i>a</i>	
" 16 Sat.	Millwall, S.L. <i>h</i>	
" 23 Sat.	Leyton, S.L. <i>a</i>	
Good Friday	Watford, S.L. <i>a</i>	
Mar. 30 Sat.	Portsmouth, S.L. <i>h</i>	
Easter Mon.	Northampton, S.L. <i>a</i>	
Apl. 6 Sat.	New Brompton, S.L. <i>a</i>	
" 13 Sat.	Plymouth Argyle, S.L. <i>h</i>	
" 20 Sat.	Brighton and Hove, S.L. <i>a</i>	
" 29 Sat.	Reading, S.L. <i>h</i>	

S.L. SOUTHERN LEAGUE. U.L. UNITED LEAGUE.
F. FRIENDLY.

THERE'S THE BEST,

"The Luton News,"

AND THE REST.



ERNEST DOBSON,

AN amateur who rendered very good service for Luton on several occasions last season at centre forward, is a native of Barnsley, Yorks., and is 23 years of age. Height 5ft. 11in., weight, 11st. 3lb. He played first for Page Green School, Tottenham, and afterwards Page Green Old Boys, for whom he played regularly to the end of last season, excepting when he assisted Luton in this year. During his career with Page Green Old Boys he was selected to play for both London and Middlesex in inter-County matches, and on several occasions assisted Ilford. Dobson is a smart player, and the Directors are fortunate in having his promise of assistance.



A. GITTINS,

Who comes to Luton from Atherton Church House, is 22 years of age, weighs 10st. 6lbs. and stands 5ft. 8in. He played as a junior for Pulton and then for Adlington, when, attracting the attention of the Bolton Wanderers executive, he was induced to give his services to that club as an amateur. He was next offered a professional engagement at Blackpool and subsequently he went from there to Atherton. His favourite position is inside left.

Phonographs & Records

AT LOWEST STORE PRICES.

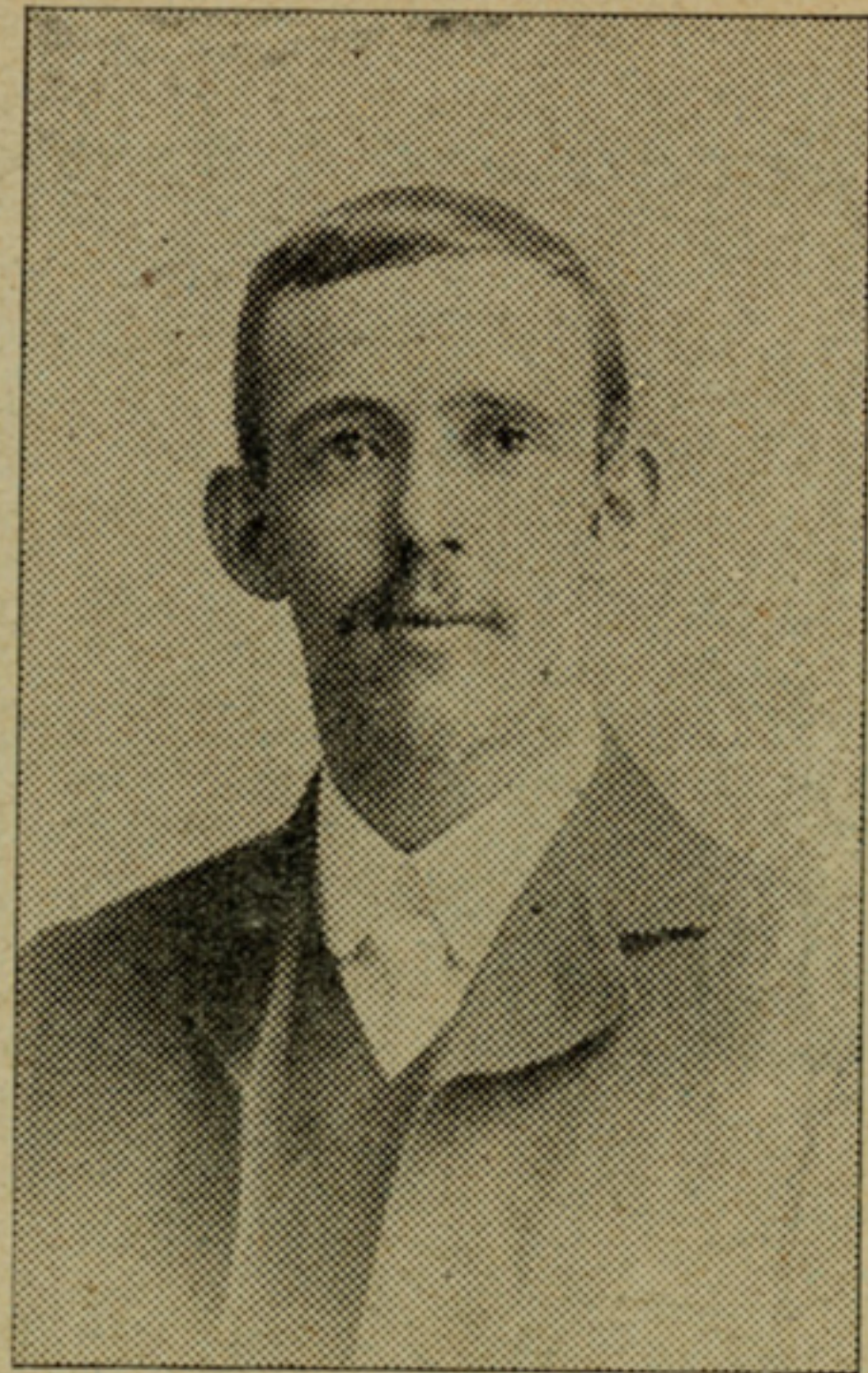
Largest and Most Up-to-date Stock in
... the Town. ...

Special Record Showroom.

NOTE THE ADDRESS:

W. T. Roberts & Son,

Musical Instrument Warehouse,
28, CASTLE ST.,
LUTON.



JOHN PICKERING.

THIS player, who is a little over 23 years of age, stands 5ft. 9½in., and weighs 11st. 5lbs., came to us from Bury, and is a native of Newcastle-on-Tyne. He made a name for himself with Wellington Athletic, and added to his reputation when playing for Bury, the club's supporters being very sorry to lose him. His position is inside left. He experienced a good deal of bad luck in the matter of scoring when playing for Luton last season, but he proved himself to be one of the best of forwards, dashing and fearless, and rendered excellent service on many occasions, especially towards the end of the season.

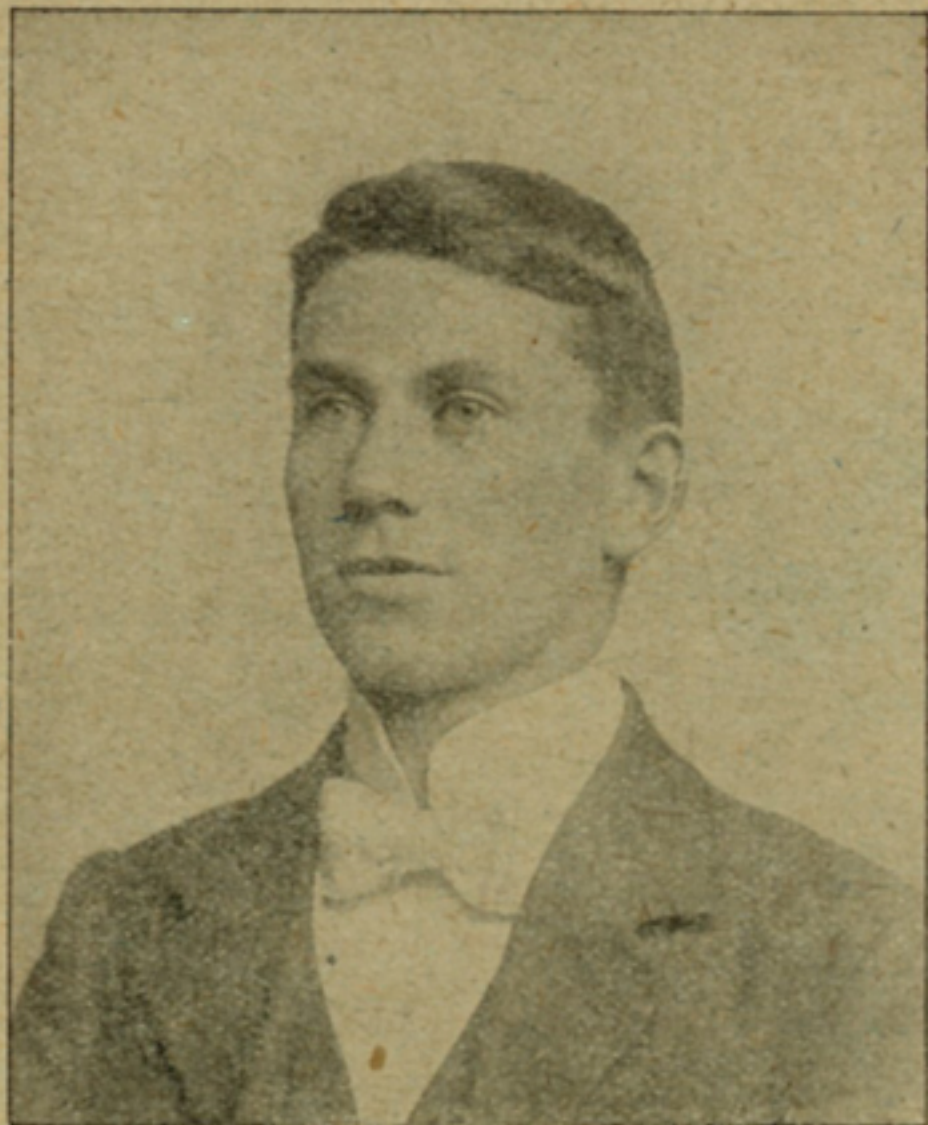
Sidney Lane's

Boot Stores,

When other shoes have
"Done their best."
Sidney Lane's still
"Stand the Test."

Luton.

32, Chapel Street,



WILLIAM BARNES,

Now entering on his third season with Luton, is a forward of considerable ability, his speedy runs being a great feature. Born at West Ham 27 years ago, Barnes began his football career with the Leyton club, and afterwards migrated to Sheffield, spending three seasons with Sheffield United in First League Football and helping them to win the English Cup when they beat Southampton at the Crystal Palace by two goals to one. Indeed, it was Barnes who scored the winning goal. He subsequently spent a couple of seasons with West Ham, and then came to Luton. He has played both inside and outside left, but prefers the latter position. His height is 5ft. 9in., and he weighs 11st.

THE MOST FOR THE MONEY.

The Best Life Office for Abstainers.

The Institution is the Largest English Mutual Life Office. There are no Shareholders to draw any portion of the profits. Its working expenses are low.

United Kingdom Temperance &
General Provident Institution.

District Representative:

Mr. A. PUDDDEPHATT

Ellesmere, Brook St., Luton.

LOCAL AGENTS:—Messrs. Carruthers Bros., King Street;
C. P. Wood, Esq., Capital and Counties Bank; Mr.
C. J. Squires, Dallow Road, Luton.



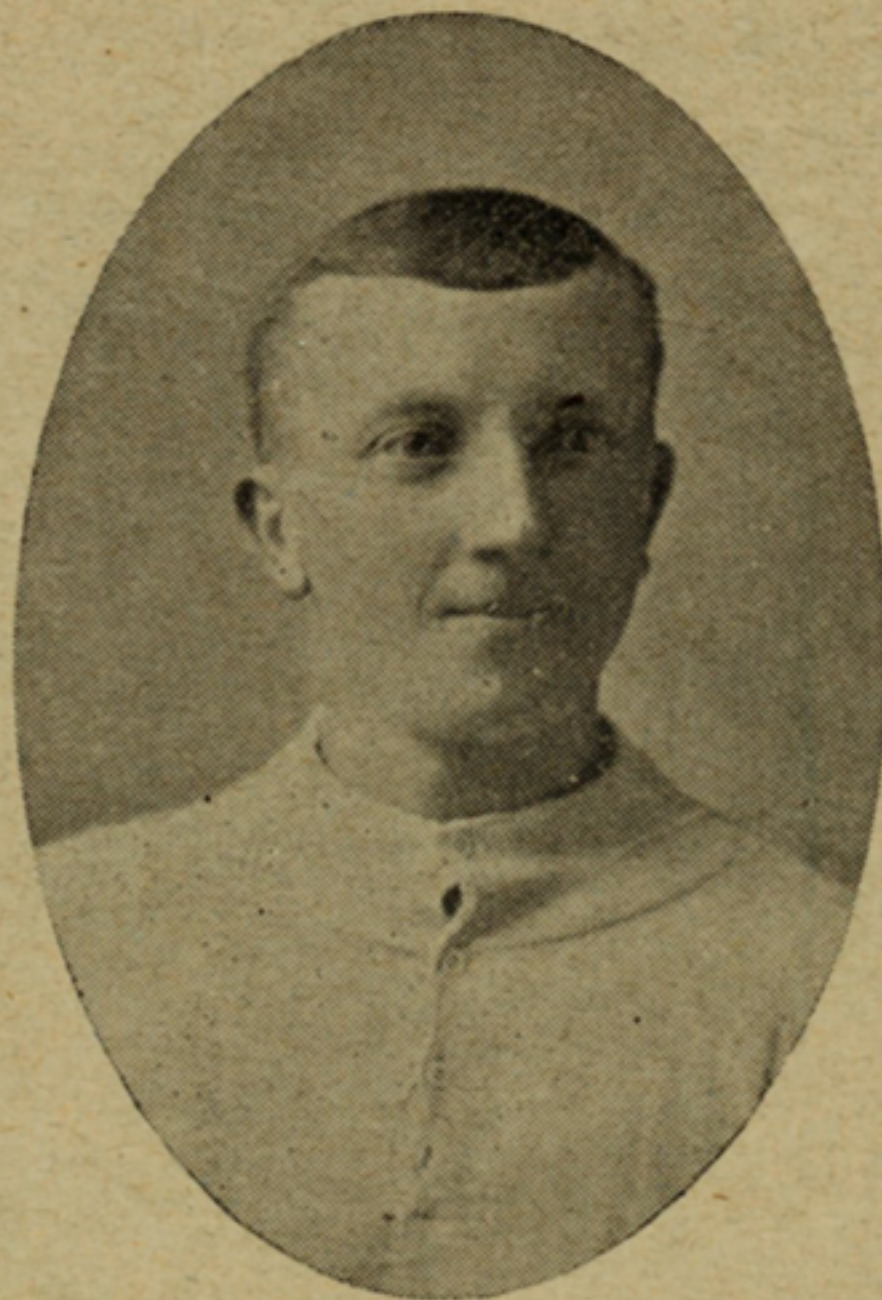
Don't Wait for an Accident

Before you Insure. Accidents will happen, therefore
Protect Yourself. Insure against Accident and Sickness
with the

Ocean Accident Insurance Co.,

For Full Particulars apply

17, Brook Street, Luton.



Photo

BOB LATHERON, *A. J. Anderson and Co.*

LOCALLY known as "Smiler," by reason of the sunny temperament he displays on the field, threw in his lot with Luton last season, that being his first appearance as a professional. He is a native of Carlin-How, near Middlesborough, first played for an amateur club known as Grangetown, and afterwards for Darlington St. Augustine's. He plays either outside right or left, but prefers the latter. He is 24 years of age, stands 5ft. 6in. and weight 10st. 9lbs.

THREE LINES

TO THE

POINT.

Medals

For Sports, Prizes, &c., we hold a large Stock, and can compete with any firm in the neighbourhood. Designs and quotations submitted for special subjects

Presentation Goods

for awards, presents, &c.

A varied and up-to-date selection suitable to all occasions.

Waltham Watches.

Always reliable. The most perfect watch on the Market. Various grades in stock at lowest current prices.

J. T. JEFFS & SONS,

Watchmakers and Jewellers,

41, WELLINGTON STREET and

31, MANCHESTER STREET,

LATE F. C. WHITE.

For CORRECT WATCH REPAIRS we Stand Unrivalled
NO GUESS WORK.

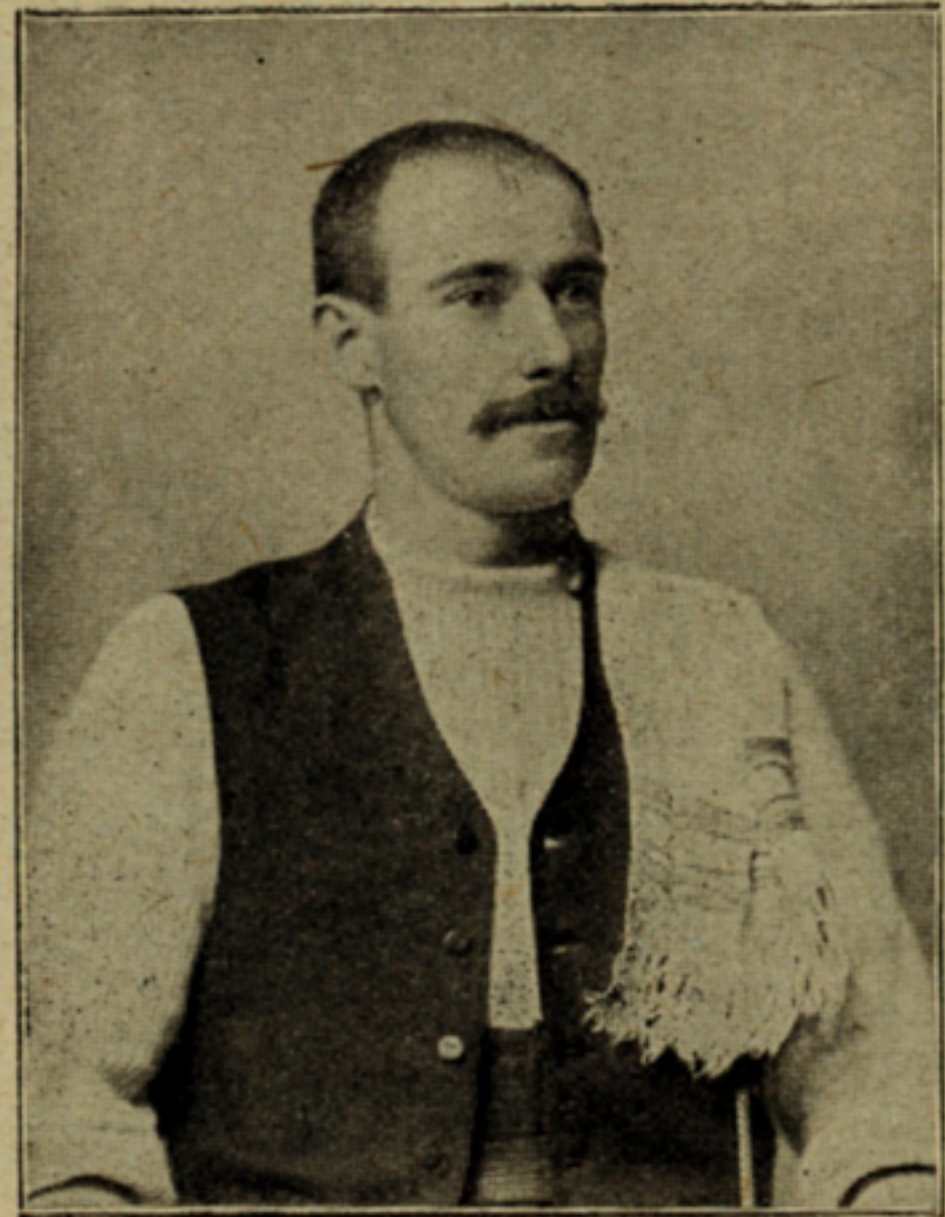


Photo W. LAWSON, TRAINER. A. J. Anderson and Co.
W. LAWSON, popularly known as "Billy," is Luton bred and born. For several seasons he has acted as trainer to the first team and previous to that looked after the Reserves for the love of the thing. He has had considerable experience as an athlete, having in his time been a boxer of no mean order, and taken part in some very tough contests. He is 39 years of age, stands 5ft. 7in. high, and weighs about 10st. As a trainer he is said by men who know to be without a superior even in First League circles.

Hill & Wood,
Electrical
and General **Engineers,**

Chapel Street, LUTON.

Specialities :

Electrical Installations.

Motor-Car & Motor-Cycle Repairs.

RUBBER WORK
BY UP-TO-DATE
VULCANIZING MACHINERY.

Estimates Free. Nat. Tel. 0611.

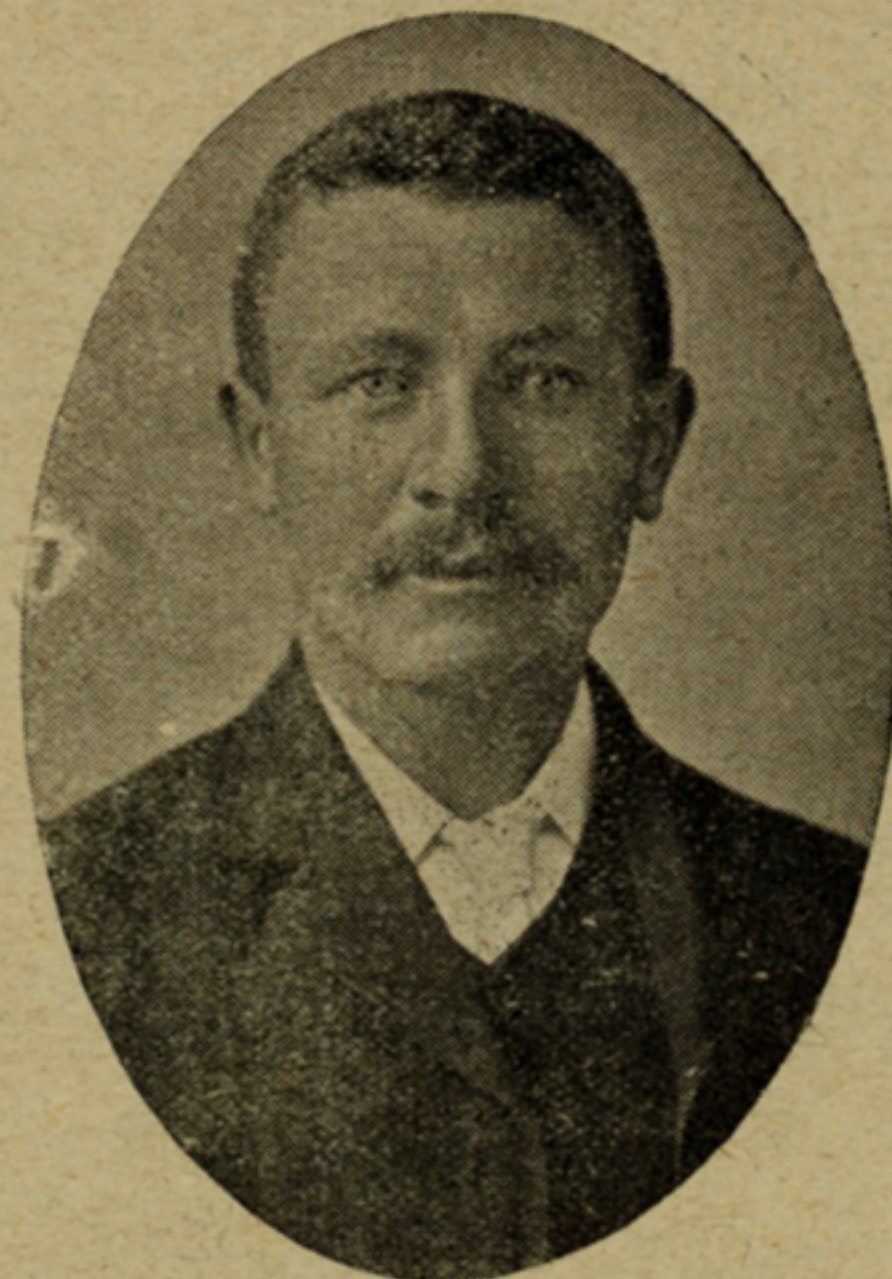
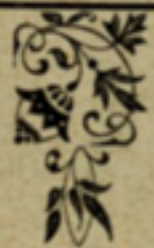


Photo — JAMES BYGRAVE, *A. J. Anderson and Co.*
Who has done such good service for the Luton Club as groundsman for the past five or six years, is a native of Meppershall, where he was born just 40 years ago. He has had a lot of experience with the turf, having been connected with several cricket clubs as groundsman. He took a great interest in Luton football before he became officially attached to the Club, and for seven years he attended every home match but one, and then he was ill in bed. He is popularly known as "Jim," and his love of his work makes him an exceedingly useful man to the Club.

W. EVERITT & SONS,



Practical Tailors,
&c.,

1, HASTINGS STREET,

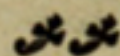
(CORNER OF
REGENT STREET)

LUTON.

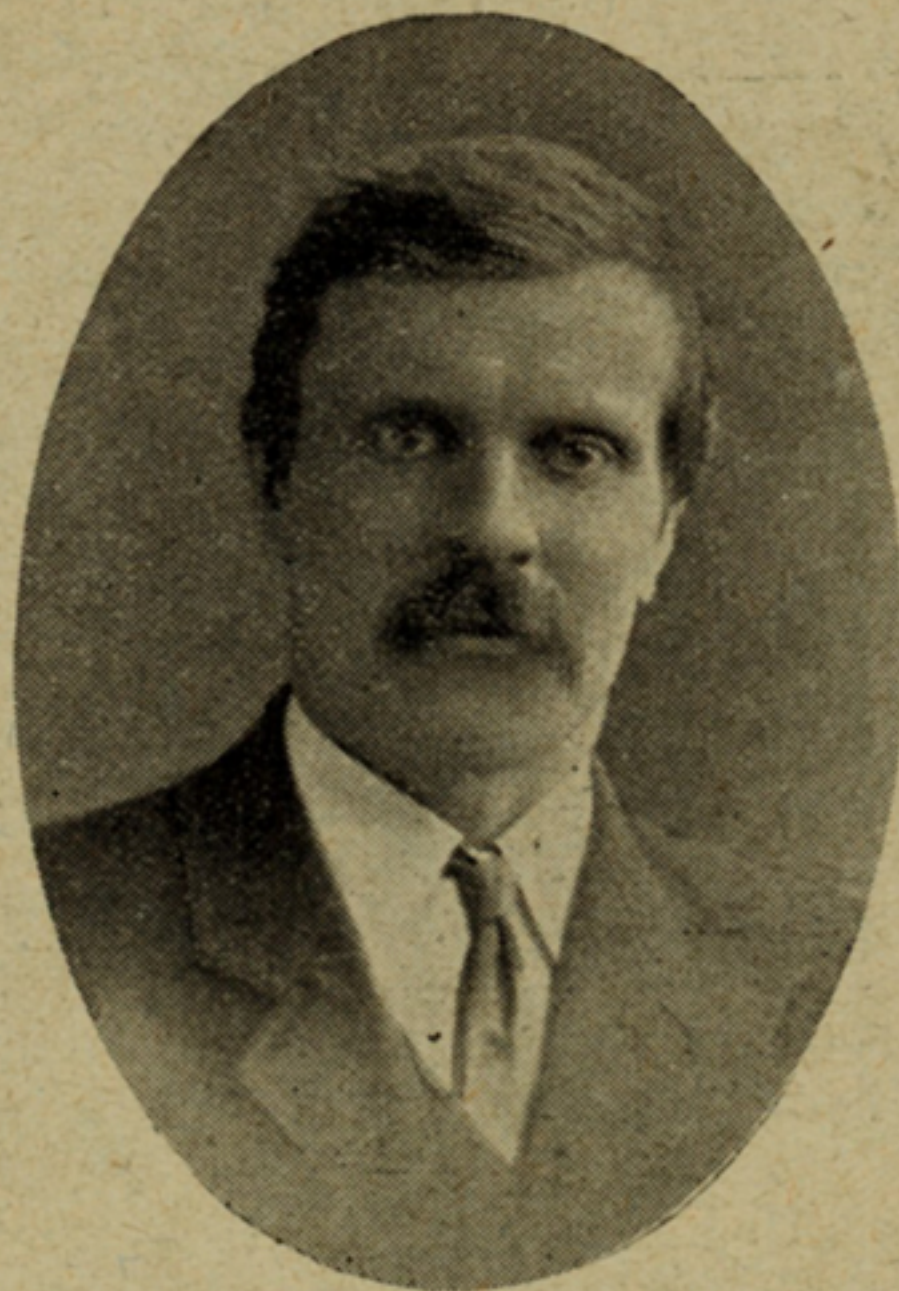


STYLE & FIT
GUARANTEED.

All Orders promptly and personally
attended to.



**THE FAVOUR OF A TRIAL ORDER
SOLICITED.**



Photo]

[Mr. W. H. Cox.

MR. CHAS. GREEN,
Secretary Luton Town F.C.

W. F. BOOTES,



WATCHMAKER,
JEWELLER AND
SILVERSMITH. . .

Thermometers & Barometers
Cleaned & Repaired.

Clocks Wound by Contract. Repairs a Speciality.

Old Gold and Silver Bought.

THE SHOP FOR . .

COURTING COUPLES.



Wedding and Engagement Rings a Speciality.

15, Guildford St., Luton.

THE CELEBRATED

Waltham Watches at all Prices.

In Gold, Silver and Gold Filled.

FIVE YEARS' WARRANTY GIVEN.

LUTON RESERVE FIXTURES, 1906-7.

DATE.	OPPONENTS.	GOALS FOR AGST.
Sep. 1 Sat.	Maidstone United, S.E.L. a ..	
" 8 "	Watford, S.E.L. h	
" 15 "	Hitchin, S.E.L. a	
" 22 "	Hastings & S. Leonards S.E.L. h	
" 29 "	Tottenham Hotspur, S.E.L. a	
Oct. 6 "		
" 13 "	Norwich City, S.E.L. a	
" 20 "	Woolwich Arsenal, S.E.L. h ..	
" 27 "	Sittingbourne, S.E.L. h	
Nov. 3 "		
" 10 "	Northampton, F. h.	
" 17 "	Leyton, S.E.L. a	
" 24 "	Hitchin, S.E.L. h	
Dec. 1 "	Chelsea, S.E.L. a	
" 8 "	Maidstone United, S.E.L. h ..	
" 15 "	Brighton and Hove, S.E.L. a..	
" 22 "		
Xmas Day		
Boxing Day		
Dec. 29 Sat.	Queen's Park Rangers, S.E.L. h	
Jan. 5 "		
" 12 "		
" 19 "		
" 26 "		
Feb. 2 "	Tottenham Hotspur, S.E.L. h	
" 9 "	Page Green Old Boys, F. a	
" 16 "	Norwich City, S.E.L. h	
" 23 "	Woolwich Arsenal, S.E.L. a ..	
Mar. 2 "	Watford, S.E.L. a	
" 9 "	Chelsea, S.E.L. h	
" 16 "		
" 23 "	Leyton, S.E.L. h	
Good Friday		
Mar. 30 Sat.		
Easter Mon.	Sittingbourne, S.E.L. a	
Apl. 6 Sat.	Page Green Old Boys, F. h	
" 13 "	Queen's Park Rangers, S.E.L. a	
" 20 "	Brighton and Hove, S.E.L. h ..	
" 27 "	Hastings & St. Leonards S.E.L. a	

WHERE to FURNISH

BY EASY INSTALMENTS.



THE

Luton Furnishing Co.,

Bute Street and Waller Street,

SUPPLY EVERY DESCRIPTION OF

HOUSEHOLD * FURNITURE

AT LOWEST PRICES.



General Terms:

£5 worth, 2/- weekly.		£15 worth, 4/- weekly.
£10 ,, 3/- ,,		£20 ,, 5/- ,,

Or Terms Arranged.

SPECIAL OFFER.

A FULL SIZE BRASS RAIL BEDSTEAD (extending foot), Pair of Palliasses, Wool Bed, Bolster, and Two Pillows.

THE LOT - £3 : 0 : 0.

Delivered Free any distance, for 5/- down, 1/- weekly.

Our Illustrated Catalogue, showing how to Furnish a Cottage or Villa, FREE on Application.

PIANOS FROM 10/6 PER MONTH.

All goods delivered Free in Private Vans, any distance.

Bedfordshire Football Association.

SEASON 1906-7.

WHATEVER may be said of other sports, there is no doubt about the advance which football has made, and in fact is making in the country. There may be little improvement in some games, but football still goes merrily forward. You cannot point to any game which is so splendidly organised, or which retains such a hold upon the confidence of the public. True, mistakes in administration are made, but the thoroughness which characterises its management are matters of approbation. And in the general uplifting of the sport, the Beds. F.A. undoubtedly takes its part. From time to time, as the annual meetings roll round, the pleasing fact stares one in the face that in its own area it fulfils its mission. Commencing in February, 1894, it will be seen it enters upon its thirteenth year. To some, this so-called unlucky number is associated with difficulty, but it is questionable whether this pessimism exists in the minds of the officials. The outlook for 1906-7, if one is to believe the forecast of the Hon. Sec. at the last annual meeting, is very cheery, and the keynote is pitched pretty high. It stands to reason when clubs have confidence in their administrators, that brightness should exist. There was a slight decrease in the number of clubs last season, as only 80 were in membership, but when one considers the size of the county of Bedford, it is marvellous where all the clubs spring from. The one great flaw is the lapsing of clubs, causing annoyance and expense to others with whom fixtures have been made. This is a most difficult problem with which to deal, but largely rests with the cultivation of a true sportsmanship on the part of the defaulters. The finances of the Beds. F.A. are in a healthy condition, and with a working committee, such

as exists at present, there should be no difficulty in keeping up the satisfactory state of affairs. The financial condition also encourages the various clubs in their endeavours to keep a clean sheet, and no doubt the example set of careful study to keep down expenses in administration redounds to the credit of the Beds. F.A.

The whole of the officials were re-elected at the last annual meeting in May, and the continuity of their work of usefulness speaks well for the success of the Association. As a whole the Executive is composed of sound, experienced workers, as the Association does not include a single "sleeping" partner; they are a body of "workers," and bring to bear on their work a full knowledge of the intricacies and unpleasantnesses of the inner working. But the work is approached in a fearless, unbiassed spirit, and this alone explains the good feeling which prevails, and the acceptance of the decisions.

The Association is represented at the Council of the Football Association, Ltd., the ruling body of the game in England, and so the whole of the alterations, movements, and advantages are carefully noted and acted upon, the benefits derived thereby being incalculable. The Hon. Sec., Mr. G. Wistow Walker, is the representative.

The following are the officers:—

President: Mr. Frank Ebbs, 45, Rothesay Rd., Luton.

Vice-Presidents: Messrs. E. L. Finch, 8, Clarendon Road, Bedford; and J. Davies, Hitchin Road, Arlesey.

Hon. Sec. and Treas.: Mr. G. Wistow Walker, 40, Brook Street, Luton.

Auditors: Messrs. R. E. Green and J. H. Scott.

* *Executive*: Messrs. H. Phillips (Biggleswade), E. Humphreys (Bedford), D. T. Dockrill, C. Green, J. H. Scott, T. V. Donelan (Luton).

* Executive Election in September may alter the constitution of this Committee.

List of Affiliated Clubs.

*a Name and Address of Secretary. b Ground.
c Dressing-room.*

AMPTHILL TOWN. *a* R. Seabrook, Church Street, Ampthill. *b* Ampthill Park. *c* Old George Inn.

ARLESEY. *a* H. Templeman, Arlesey, near Hitchin. *b* Mr. Hildred's Field. *c* On Ground.

ARLESEY OLD BOYS. *a* G. S. Howard, 10, New road, Arlesey, near Hitchin.

ASPLEY GUISE. *a* G. H. Taylor, Aspley Guise, R.S.O.

BEDFORD CHURCH LADS' BRIGADE. T. G. Gunnell, 5, Alexander road, Bedford.

BEDFORD EARLY CLOSERS. *a* P. Tingey, St. Leonards street, Bedford.

BEDFORD EXCELSIOR. *a* A. Noel Mercier, 10, Gibbons Road, Bedford.

BEDFORD THURSDAY ATHLETIC. *a* A. R. Goodchild, 21, Commercial road, Bedford.

BEESTON RANGERS. *a* Chas. Barratt, Beeston Green, Sandy.

BIGGLESWADE AND DISTRICT. *a* E. A. Chambers, 4, Alexandra terrace, Biggleswade. *b* Fairfield. *c* Crown Hotel.

BIGGLESWADE CHURCH LADS' BRIGADE. *a* R. Wheatley, Drove Road, Biggleswade. *b* Mr. Cole's Meadow. *c* Hop Bine Inn.

BIGGLESWADE RED STAR. *a* H. H. Dean, Cemetery street, Biggleswade.

BIGGLESWADE TRINITY, *a* F. Jarman, Dunton, Biggleswade.

CLIFTON. *a* John Deverill, "The Lakes," Clifton, near Biggleswade. *b* Mr. Inskip's Meadow. *c* Chequers Inn.

DUNSTABLE HIGHFIELDS. *a* Percy W. Lockhart, Chiltern House, Dunstable. *b* Near Half Moon. *c* On Ground.

DUNSTABLE RANGERS. *a* J. Anderson, 12, Garden road, Dunstable.

EATON SOCON EAGLES. *a* F. J. Pratt, Ladysmith Terrace, Eaton Socon, near St. Neots.

GOLDINGTON UNITED. *a* A. B. Alexander, The Schools, Goldington, Bedford. *b* The Green. *c* The Anchor.

HEATH UNITED. *a* R. Miles, The Poplars, Heath, Leighton Buzzard.

HENLOW. *a* S. Mabbitt, Henlow, Biggleswade.

HOUGHTON REGIS UNITED. *a* E. Gazeley, 21, Beale street, Dunstable. *b* Houghton Green.

KEMPSTON RANGERS. *a* F. L. Evans, 52, Edward street, Bedford.

KEMPSTON ROVERS. *a* F. Stanton, 110, Margetts road, Kempston, Bedford.

KEMPSTON STARS. *a* A. Allen, 81, Woburn road, Kempston, Bedford.

LANGFORD TRINITY. *a* Tom Swain, Hope Cottage, Langford, near Biggleswade.

LEAGRAVE. *a* S. Weedon, Royal Oak Inn, Leagrave.

LEIGHTON TOWN. *a* Harry V. Jones, Billington road, Leighton Buzzard.

LEIGHTON JUNIORS. *a* H. J. Wallace, Hartwell Crescent, Leighton Buzzard. *b* Pond Field, Stoke road. *c* The Stag, Linslade.

LEIGHTON VOLUNTEERS. *a* Sergt.-Inst. N. Sheppard, Langsett Villa, Vandyke road, Leighton Buzzard. *b* Mr. Hobbs' Field. *c* Curriers Arms.

LUTON ALBION. *a* F. King, 53, John street, Luton. *b* Pope's Meadow.

LUTON ALLIANCE. F. Bradshaw, 28, Back st., Luton.

LUTON AMATEURS. *a* R. M. Plummer, Rookwood, New Bedford Road, Luton. *b* The Dell, Old Bedford road. *c* On Ground

LUTON BAKERS AND CONFECTIONERS. *a* — Dickens, Stanley street, Luton.

LUTON BOROUGH POLICE. *a* P.c. E. Janes, Borough Police Station, Dunstable Place, Luton.

LUTON BUTCHERS. *a* F. Hoar, 43, Dallow rd., Luton.

LUTON CELTIC. *a* Stanley Kilby, 57, Tavistock street, Luton.

LUTON CLARENCE. *a* A. E. Ansell, Laurel Villa, Havelock road, Luton. *b* Pope's Meadow.

LUTON CRESCENT RANGERS. *a* A. Dewar, 31, Vicarage street, Luton.

LUTON DRAPERS AND FURNISHERS. A. C. Dimblebee, Hardwick House, Cardiff road, Luton.

LUTON EARLY CLOSERS. Wm. Arter, Denmark House, Market Hill, Luton.

LUTON FRIENDS' ADULT ATHLETIC. *a* P. C. Kilby, 116, Wenlock street, Luton.

LUTON GROCERS AND PROVISION MERCHANTS. *a* W. H. French, 25, Lyndhurst road, Luton.

LUTON HAIRDRESSERS. *a* H. Burnett, Castle st., Luton.

LUTON HAVELOCK. *a* F. Hunt, 15, Dudley st., Luton.

LUTON Highbury. *a* Sid C. Allen, 7, Havelock road, Luton. *b* Old Bedford road. *c* On Ground.

LUTON IRONMONGERS. *a* Edward Holdstock, 22, South road, Luton.

LUTON IVY UNITED. *a* J. Pyne, 39, Beech road, Luton.

LUTON MELVILLE. *a* H. W. Holdstock, 12, Hillside road, Luton.

LUTON MOORDALE. *a* A. G. Gurney, 80, Crawley road, Luton. *b* Faunch's Farm, Old Bedford road. *c* On Ground.

LUTON NEW TOWN INSTITUTE. *a* W. Carter, 95, New Town street, Luton.

LUTON OLD ST. SAVIOUR'S. *a* A. R. Rowley, 57, Stanley street, Luton. *b* Faunch's Farm. *c* On ground.

LUTON OLD VICARAGE. *a* Wm. Pateman, 20, Henry street, Luton. *b* East Ward Rec.

LUTON QUEEN'S. *a* W. Goodwin, 60, Baker street, Luton.

LUTON ROSEDALE. *a* V. Hawkes, 74, Princess street, Luton.

LUTON ST. MARY'S. *a* R. E. Green, 90, Church street, Luton.

LUTON ST. MARY'S UNITED. *a* L. E. Hawkes, 6, Cumberland street, Luton. *b* Pope's Meadow.

LUTON ST. PAUL'S. S. Burgess, 13, Vicarage street, Luton.

LUTON ST. SAVIOUR'S CHURCH. *a* T. Weedon, Holly Lodge, Castle street. *b* Stockwood Park.

LUTON TAILORS AND OUTFITTERS. *a* H. Brooker, 17, George street West, Luton.

LUTON TOWN. *a* C. Green, 81, Church street, Luton. *b* Ivy road. *c* On Ground.

LUTON UNITED. *a* H. Kilby, 15, Bailey street, Luton.

LUTON WESLEY GUILD. *a* A. East, 52, Hibbert street, Luton.

MARKYATE ST. JOHN'S. *a* F. E. Beck, 140, High street, Markyate, near Dunstable.

MARSTON ROVERS. *a* F. Tuffnell, Upper Shelton, Marston, near Ampthill.

MEPPERSHALL. *a* E. Harris, Meppershall, near Shefford.

OLD WARDEN. *a* G. W. Newton, Old Warden, Biggleswade. *b* Old Warden. *c* Hare and Hounds Inn.

POTTON. *a* Edward E. Chapman, Biggleswade road, Potton, Beds.

PODINGTON. *a* D. A. Radmore, Hinwick House, near Wellingboro'.

SANDY ST. SWITHUN'S. *a* Albert E. Ball, London road, Sandy.

SHARNBROOK. *a* C. Heritage, Kennel Hill, Sharnbrook, Beds.

SHILLINGTON. *a* R. H. Brown, Rose Hill, Shillington, Hitchin.

ST. ANDREW'S, WOODSIDE. *a* S. C. Dickinson, 43, Collingdon street, Luton.

STOTFOLD. *a* H. Howard, Norton road, Stotfold, near Baldock, Herts. *b* Mr. Smith's Meadow. *c* Crown Inn.

THREE COUNTIES ASYLUM. *a* P. Keenan, Three Counties Asylum, near Hitchin.

TODDINGTON. *a* Rev. C. V. Raynor, Toddington, Dunstable.

TODDINGTON UNITED. *a* G. E. Purchon, Queen's Head, Toddington, near Dunstable.

TURVEY UNITED. *a* F. W. Wright, Turvey, Bedford.

UPPER CALDECOTE. *a* G. Darnell, Upper Caldecote, Biggleswade.

WOOTTON BLUE CROSS. *a* R. B. Walker, Wootton, near Bedford.

WYMINGTON. *a* Arthur Hall, High street, Wymington, near Rushden.

Leagues of the District.

ASCOTT LEAGUE. W. GEE, 10, Cambridge street, Wolverton.

BEDFORD LEAGUE. a HERBERT EATON, 22, Bat-tison street, Bedford.

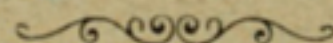
BIGGLESWADE LEAGUE. a C. J. LARKINSON, Hitchin street, Biggleswade.

LUTON JUNIOR LEAGUE. a J. H. SCOTT, 121, Hitchin road, Luton.

LUTON JUNIOR LEAGUE.

IN spite of difficulties this well-known league pursues its course, and caters for that class of footballer distinctly junior. This season is the ninth of its career, and only those connected with it can realise the hardness of the task in keeping it going. How the clubs can find playing space is the greatest wonder, for a look at the list of Luton clubs is simply astonishing, but that they do play somewhere is evident. The various recreation grounds of Luton are fully taxed to meet the needs of this class of football, and as a few of them are fortunate in possessing the privilege of "private" grounds, the problem is solved. To the spectators of these various games is provided an example of whole-hearted play; there is no question about the earnestness of the league contest, and the development of junior football owes a debt of gratitude to this organisation for its efforts to infuse a true ideal of what play means. The Committee is derived from the various clubs, and is presided over by Mr. R. E. Green, whose interest in this class of football is

well known, and Mr. J. H. Scott, 121, Hitchin Road, Luton, is the Hon. Sec. and Treasurer. The greatest drawback to this league is its lack of funds, and with the multiplicity of calls upon the purses and goodwill of the public men of the neighbourhood, the question will have to be faced by the clubs themselves. At the same time there is a lack of referees for the league, and anyone interested in this side of football has a chance of making a good start here, for he can get plenty of practice which will be advantageous in higher spheres.



TRADESMEN'S CUP COMPETITION.

WHEN this competition was initiated there were plenty to throw cold water on the scheme, but the conclusion of the first season's working has considerably altered opinion in this respect. For some time a lack of Wednesday football was felt, but this amalgamation of the various early closers in the trades fills the gap. Now it cannot be said that the shop employee cannot get his fill of the winter game. In this matter, too, the Luton Town F.C. has taken an active part, and not only given its sanction, but its practical help as regards ground, receiving in return some slight monetary consideration. Mr. T. V. Donelan, of The New Hall, Wellington Street, Luton, is the Chairman, whilst the secretarial duties are performed by Mr. H. Brooker, 17, George Street West, Luton, with Mr. W. Kendall, 19, Elizabeth Street, Luton, as Assistant. The Grocers' F.C. hold the championship for the first season and are naturally proud of their distinction. It is anticipated that the competition will be increased this season and other trades are organising in order to be in the contest.

Plait * Mills

HAND OR POWER.

Suitable alike for every kind of Plait.

UNEQUALLED FOR

Ease,	Strength, . . .
Convenience, .	Compactness, .
Durability, . .	and Cheapness.

SATISFACTION GUARANTEED.

Further Particulars from the Maker:

Frank Moody,

ENGINEER,

CHAPEL STREET,

LUTON.

Luton Clarence F.C.

LUTON CLARENCE can safely claim to be the oldest amateur club in the town. Formed as far back as 1896, they amalgamated in their first season with another junior club, who played under the name of St. Paul's F.C. During their first two or three seasons the Club played only "friendlies," but in the season 1899-1900 they won the Luton League Championship, and also annexed the trophy in the following season. It was in 1901 that they first reached the semi-final of the Bedfordshire Cup, when they were beaten by Arlesey by 3 goals, Burbage, of Luton Town fame, doing all the damage. This was the season, too, in which the Club had their memorable fight with Luton Victoria in the Beds. Cup, having to play them on four successive Saturdays before a definite conclusion was arrived at. The semi-final stage was also reached the next season, and in 1903, 1904 and 1905, the Club got into the final, winning the Cup at the third attempt, after beating Luton Reserves, Arlesey and Luton Amateurs. Last season the Club was not so prominent in the Cup competition, but had the consolation of winning the handsome trophy connected with the Bedford League. For the coming season good preparations have been made, and a successful time is anticipated. A new ground has been acquired, on which proper dressing-rooms are to be fitted up. The English, Amateur and Bedfordshire Cups, with the Bedford League, will occupy chief attention, and the Club is also endeavouring to arrange some first-class friendly matches. During the past close season, unsuccessful applications were made for admission to the South Eastern and Isthmian Leagues. The present Secretary, Mr. Albert E. Ansell, is the only member out of the old stock at present with the Club, he having stuck to it since its formation.

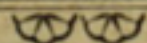
Umbrellas!



Umbrellas!

For the best value and largest
selection in Ladies' and Gent's
Umbrellas at all prices, go to .

H. W. SPRATLEY



Gent's Hairdresser & Umbrella Maker.

Only Address: 6, Wellington Street, Luton.



Photo

MR. A. E. ANSELL, *A. J. Anderson & Co.*

Secretary Luton Clarence F.C.

MEN WHO HAVE PLAYED FOR LUTON

SINCE IT ADOPTED PROFESSIONALISM.

1891-2.—J. Burley; Sanders, Hoy; Wright, Paul, Taylor, E. H. Lomax; F. K. Whitby, Deacon, C. Lomax, Ocle, H. Whitby, Chesher.

1892-3.—Burley, T. Reed; Sanders, Hoy, George, Wilson; Wright, Julian, Taylor, Watkins; Brown, Chesher, Allen, H. & F. Whitby, Barbour, Galbraith, J. McKenzie, Kirk.

1893-4.—Bee; Chesher, Wilson, C. Read; Watkins, Julian, Taylor; H. Whitby, Allen, Galbraith, Finlayson, Vickers, J. Dimmock, Brown, Hayes.

1894-5.—Bee; Chesher, M. D. Nicholson, McEwen; Watkins, McCrindle, Howe, Collins; Brown, Gallacher, Galbraith, Prentice, Allen, Dimmock, Jack.

1895-6.—Jack, Russell, Williams; Stirton, M. D. Nicholson, McEwen; Watkins, Stewart, Docherty; Gallacher, Finlayson, Galbraith, Parkinson, Birch, Ekins, Coupar, Dimmock.

1896-7.—Williams; Davies, McEwen; Perrins, Stewart, Docherty, Watkins; Gallacher, Finlayson, McInnes, Galbraith, Birch, Coupar, Ekins, Dimmock, Brown.

1897-8.—Williams; McCartney, McEwen; Davies, Stewart, Docherty, Perrins; Gallacher, Coupar, Birch, Clarke, Donaldson, Little, McInnes, Ekins, Durrant.

1898-9.—Perkins; H. Williams, Moore, Dow; C. Ford, Clark, Sharp, Crump; Durrant, Hewitt, W. Ford, Kemplay, Draper, McInnes, Brock, Ekins.

1899-1900.—Daw; Dow, McCurdy; Morrison, Stewart, Brown, Williams, Ralley; Inglis, Brock, Fairgrieve, Draper, McInnes, Eckford.

1900-1.—Monks, Ord; Lindsay, McCurdy; Clifford, Holdstock, Williams, Cox; Brown, Blessington, Molyneux, Burbage, Dempsey, Tierney, Saxton, Durrant.

1901-2.—Ord; Lindsay, Sharp, Street; F. Hawkes, White, Williams, R. Hawkes; Durrant, Blessington, Brown, Barker, Tierney, Colvin.

1902-3.—Frail; Lindsay, Sharp, Hood; F. Hawkes, White, Williams, R. Hawkes; Durrant, Blessington, Hilsdon, Moody, Davidson, Gall, Allsopp.

1903-4.—Thompson; Bennett, McEwen; F. Hawkes, White, R. Hawkes, Williams; Durrant, Eaton, McKee, Storey, Moody, Allsopp, Griffiths, Madden.

1904-5.—Lindsay; Turney, McEwen, J. Dow; F. Hawkes, White, R. Hawkes, Pritchard, Williams; Eaton, Ross, Lamber-ton, Penman, Moody, Wallace, Barnes.

1905-6.—Platt; Blackett, McCurdy, J. Dow, Else, Watkins; F. Hawkes, White, R. Hawkes, Gallacher; Warner, Macdonald, Brown, E. Dobson, Pickering, Barnes, Latheron.

John Unwin

Has Unrivalled Selection of

Football Requisites

IN STOCK.

Before placing their orders, Clubs will do well to see his Complete Outfits.

Sugg's Football Kings	-	-	10/-
„ Special Club	-	-	8/6
„ The Centre Half	-	-	8/3
„ Klynker	-	-	7/3
„ Junior League	-	-	5/9
„ National	-	-	4/9
Gunn & Moore's Right Wing	-	-	8/9

Bladders, Knickers, Shirts, Shinguards.

BOOTS A SPECIALITY

NOTE THE ADDRESS—

82, High Town Road, Luton.

Worth Knowing.

You enjoy a Match the best when your
FEET are not COLD.

* * * *

To prevent COLD FEET wear PURE
WOOL UNDERCLOTHING.

* * * *

Supplement this with substantial BOOTS
and a good WARM OVERCOAT.

* * * *

Then you can face the WEATHER and
watch the GAME WITH COMFORT.



All Kinds of Men's Wear.

M. MARES, ^{Top of} _{Market Hill} Luton.