



THE "LUTON NEWS"

Football Handbook

1913-14.

Our Special Speciality in Teas

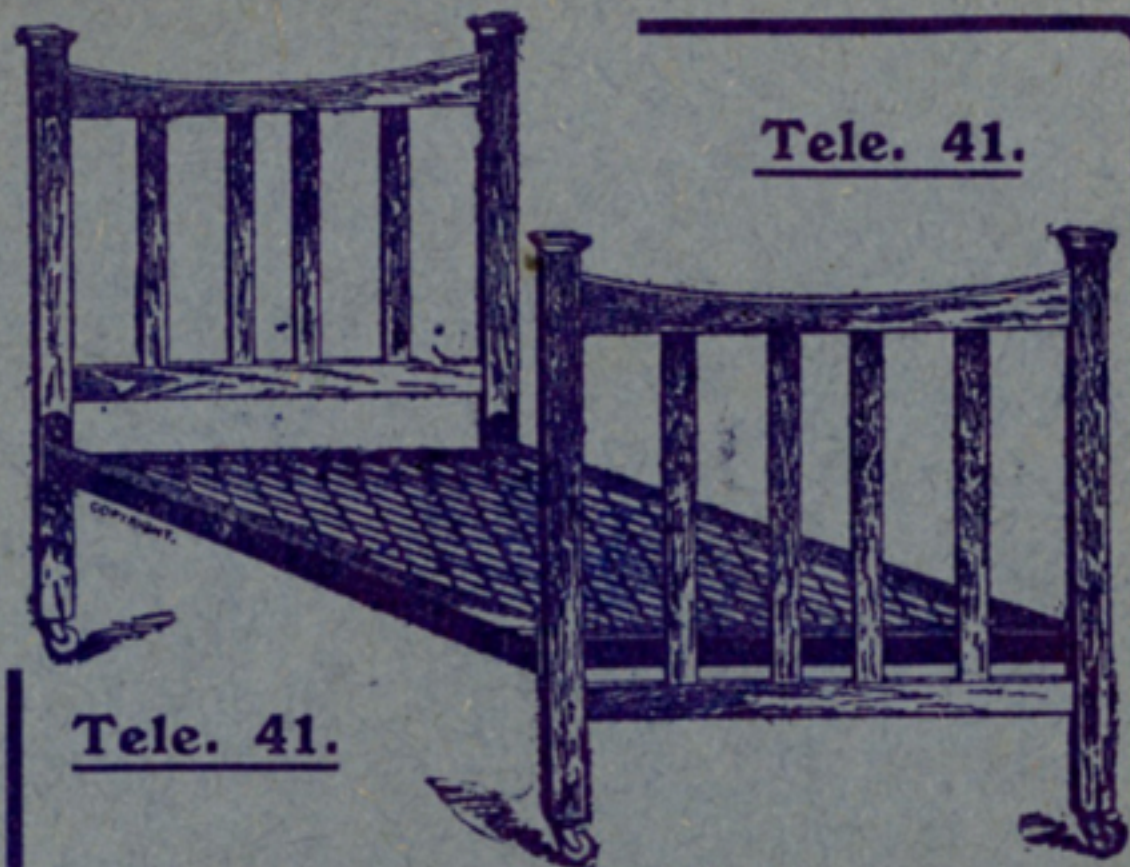
is our $1/6$ blend. This has a very large sale in Luton and district and is exceptional value for money.

HAVE YOU EVER TRIED IT ?

If not, we solicit your trial order confident that we should then be favoured with your regular orders for it. Again we ask,

HAVE—YOU—EVER—TRIED—IT ?

H. INWOOD, COLLINGDON STREET,
also at CHAPEL STREET,
LUTON.



Tele. 41.

Tele. 41.

J. Webdale & Sons

— LTD. —

Cheapest House Furnishers

in the District,

WELLINGTON STREET,

— LUTON. —

Luton Town and Season 1913-14.



"IF LUTON do not get back into the First Division of the Southern League by the end of this season, I shall be terribly disappointed," was the remark made to me by a gentleman who has worked as hard as anyone to put Luton in a better financial position to conduct the struggle for promotion this season. And every follower of local professional football will agree with him. Luton finished fifth last season, though at one time they stood in a capital position. Perhaps the lesson to be learnt from the lack of success last season will be fully appreciated this time. One result has been to bring into thorough-going order a Supporters' Club for Luton, and with the support so well organised, the Directors may feel better able to venture more in strengthening, in good time, any weak spots which show themselves.

Financially, the Town Club did not finish up badly, though the profit of £216 shown in the balance sheet was not really a profit, for as well as having received £60 from the Supporters' Club and the subsidy of £150 from the Southern League for the trips to Wales, the Club had realised assets that they did not replace, namely, the transfer previously of players, including Moody, Brown, Walker and Bushell. However, the Supporters' Club have done splendidly in the provision of summer wages, so that will be an item of relief. On the face of things, the elements of a promotion-winning team seem to have been gathered in, so with organised support to assist the Directors in making further provisions, if necessary, with the Clarence (whose merit has earned their entrance to the Athenian League) to act more as a reserve than last year, and with *a little luck*, Luton ought to be in the First Division of the Southern League at the close of Season 1913-14.

CRUSADER.

CLUB OFFICIALS.

Directors:

H. ARNOLD (CHAIRMAN),
J. SQUIRES, H. SMART, W. SOPER, W. J. ALLEN,
E. GIBBS, F. J. CRICK AND HUGH WOODS.

SECRETARY: CHAS. GREEN, 73, Hazelbury Crescent, Luton.

— TELEPHONE 155. —

GET IT AT



ALEXANDER'S

29a, 31 & 33, WELLINGTON STREET,

LUTON,

Drapers, Dressmakers & Furriers.

LADIES MAY RELY ON OUR

Dressmaking Department

For the Latest Styles and Perfect Fit.

Autumn Novelties

ARRIVING DAILY.

FURS A SPECIALITY.

CONSULT US ON THESE GOODS.

Men who have played for Luton

Since it adopted Professionalism

- 1891-2. J. Burley; Sanders, Hoy; Wright, Paul, Taylor, E. H. Lomax; F. K. Whitby, Deacon, C. Lomax, Oclee, H. Whitby, Cheshier.
- 1892-3. Burley, T. Read; Sanders, Hoy, George, Wilson; Wright, Julian, Taylor, Watkins; Brown, Cheshier, Allen, H. and F. Whitby, Barbour, Galbraith, J. McKenzie, Kirk.
- 1893-4. Bee; Cheshier, Wilson, C. Reed; Watkins, Julian, Taylor; H. Whitby, Allen, Galbraith, Finlayson, Vickers, J. Dimmock, Brown, Hayes.
- 1894-5. Bee; Cheshier, M. D. Nicholson, McEwen, Watkins, McCrindle, Howe, Collins; Brown, Gallacher, Galbraith, Prentice, Allen, Dimmock, Jack.
- 1895-6. Jack Russell, Williams; Stirton, M. D. Nicholson, McEwen; Watkins, Stewart, Docherty; Gallacher, Finlayson, Galbraith, Parkinson, Birch, Ekins, Coupar, Dimmock.
- 1896-7. Williams; Davies, McEwen; Ferrins, Stewart, Docherty, Watkins; Gallacher, Finlayson, McInnes, Galbraith, Birch, Coupar, Ekins, Dimmock, Brown.
- 1897-8. Williams, McCartney, McEwen; Davies, Stewart, Docherty, Perrins; Gallacher, Coupar, Birch, Clarke, Donaldson, Little, McInnes, Ekins, Durrant.
- 1898-9. Perkins; H. Williams, Moore, Dow; C. Ford, Clark, Sharp, Crump; Durrant, Hewitt, W. Ford, Kemplay, Draper, McInnes, Brock, Ekins.
- 1899-1900. Daw; Dow, McCurdy; Morrison, Stewart, Brown, Williams, Ratty; Inglis, Brock, Fairgrieve, Draper, McInnes, Eckford.
- 1900-1. Monks, Ord; Lindsay, McCurdy; Clifford, Holdstock, Williams, Cox; Brown, Blessington, Molyneux, Burbage, Dempsey, Tierney, Saxton, Durrant.
- 1901-2. Ord; Lindsay, Sharp, Street; F. Hawkes, White, Williams, R. Hawkes; Durrant, Blessington, Brown, Barker, Tierney, Colvin.
- 1902-3. Frail; Lindsay, Sharp, Hood; F. Hawkes, White, Williams, R. Hawkes; Durrant, Blessington, Hilsdon, Moody, Davidson, Gall, Allsopp.
- 1903-4. Thompson; Bennett, McEwen; F. Hawkes, White, R. Hawkes, Williams; Durrant, Eaton, McKee, Storey, Moody, Allsopp, Griffiths, Madden.

J. T. Jeffs & Sons

31
Manchester
Street.

THE
SHOPS
FOR
REPAIRS

41
Wellington
Street.

AND
WATCHES,
JEWELLERY,
CLOCKS, &c.,
OF STERLING WORTH.

ALWAYS SOMETHING NEW & INTERESTING

Depots for "BELL" Lever Watches. English throughout. High Grade Movement. Eleven Jewels, 50/-. Three years' warranty.

The "LUTON" Lever. Keyless, smart in appearance and perfect timekeeper, 30/-. Three years' warranty.

The "JEWEL" Keyless Watch at 12/6 is the best Ladies' Watch at the price.

Large and varied Stock of Up-to-Date JEWELLERY, CLOCKS, &c.

Addresses { 41, WELLINGTON ST. } Phone No.
 { 31, MANCHESTER ST. } 533.

1904-5. Lindsay; Turner, McEwen, J. Dow; F. Hawkes, White, R. Hawkes, Pritchard, Williams; Eaton, Ross, Lamberton, Penman, Moody, Wallace, Barnes.

1905-6. Platt; Blackett, McCurdy, J. Dow, Else, Watkins; F. Hawkes, White, R. Hawkes, Gallacher; Warner, Macdonald, Brown, E. Dobson, Pickering, Barnes, Latheron.

1906-7. Platt; Hogg, Jackson, McCurdy; F. Hawkes, White, R. Hawkes, Jones, Gallacher; Warner, Schofield, Macdonald, Brown, Murphy, E. Dobson, Gittins, Pickering, Barnes, Fitzpatrick, Latheron.

1907-8. Platt, Jarvis; Hogg, Nicholson, Dimmock, McCurdy; F. Hawkes, Jones, White, R. Hawkes; Rankin, Walders, Rigate, Hall, Brown, Pearson, Farrant, Moody, Latheron.

1908-9. Platt, Jarvis; Dimmock, McCurdy, Gregory, Chapman; F. Hawkes, Jones, R. M. Hawkes, White; Brown, Rigate, Haycock, Menzies, Bradley, Stansfield, Moody, Johnson.

1909-10. Jarvis, Fry; Hedley, McCurdy, Chapman, Rayner, Ruffett, Potts, F. Hawkes, Jones, R. M. Hawkes, Slennett, Trueman; Brown, Quinn, Smith, Moody, Stansfield, Johnson, Divine, Moore, Porter, Schofield.

1910-11. Naisby, Jarvis; Wightman, Chapman, Potts, Webb, J. Ashton, C. Watson; F. Hawkes, Bushell, R. M. Hawkes, Johnson; Brown, Quinn, Walker, Smith, Stephenson, Moody, Lashbrooke, Stansfield.

1911-12. Naisby; Wightman, Potts, Ashton, A. Brown; F. Hawkes, Bushell, R. M. Hawkes; Brown, Walker, Stephenson, Moody, Stansfield, Johnson, Shepherd, Walden, Lashbrooke, Streeton.

1912-13. J. W. Day, R. Abbott, H. Bateman; C. G. Henderson, E. J. Potts, J. Jarvie; F. Hawkes, S. Thompson, T. T. Wilson, R. M. Hawkes; J. Stephenson, A. Wileman, W. Smith, J. Murphy, B. Holland, T. Streeton, A. Worth.

XX

The "Luton News"

THE BEST PAPER FOR

Football Reports !!

HARRY PARSONS

AT YOUR SERVICE.



Whether you
are in need
of :: ::

Football or
Sports Attire,
or
Everyday
Wearing
Apparel,

you are sure of
PERSONAL ::
SERVICE and ::

Best Value

By
calling
at

18, Manchester Street, LUTON.

Bedfordshire County Senior Cup.

The County Competition was commenced in Season 1894-5, and the trophy was presented to the Association by Samuel Whitbread, Esq., M.P. for Bedford; S. H. Whitbread, Esq., M.P. for South Beds; and G. W. Russell, Esq., M.P. for North Beds.

CUP WINNERS.

Season.

- 1894-5. Luton Montrose bt. Luton Reserves at Luton.
- 1895-6. Dunstable Town bt. Luton Excelsiors, 4-1, at Luton.
- 1896-7. Luton Reserves bt. Dunstable Town.
- 1897-8. Luton Falcon bt. Bedford Queens, 1-0, at Luton.
- 1898-9. Luton Reserves bt. Bedford Queens, at Bedford.
- 1899-00. Bedford Montrose bt. Bedford Queens, at Bedford.
- 1900-1. Luton Reserves bt. Arlesey Town, 4-0, at Luton.
- 1901-2. Luton Reserves bt. Luton Amateurs, 3-0, at Luton, after a drawn game, 2-2.
- 1902-3. Biggleswade bt. Luton Clarence, 3-1, at Biggleswade.
- 1903-4. Luton Reserves bt. Luton Clarence, 3-2, at Luton.
- 1904-5. Luton Clarence bt. Luton Amateurs, 2-1, at Luton, after a drawn game, 2-2.
- 1905-6. Luton Reserves bt. Arlesey, 3-2, at Arlesey.
- 1906-7. Luton Clarence bt. Luton Celtic, 2-1, at Luton.
- 1907-8. Biggleswade bt. Luton Celtic, 4-2, at Biggleswade.
- 1908-9. Kempston Rovers bt. Luton Clarence, 2-0, at Biggleswade, after an abandoned game at Bedford, when the Clarence were leading 2-1.
- 1909-10. Luton Clarence bt. Leighton Town, 5-0, at Luton.
- 1910-11. Luton Clarence bt. Bedford Town, 5-0, at Bedford.
- 1911-12. Luton Clarence bt. Bedford Town, 4-1, at Luton.
- 1912-13. Luton Crusaders bt. Luton Reliance, 2-1, at Luton.

FREEMAN, HARDY & WILLIS

LTD.

ARE STYLE LEADERS

IN THE MOST FASHION-
ABLE OF LADIES',
GENTS'
AND CHILDREN'S

Smart
Footwear



Football
Boots

4/11½ to 8/11

NEWEST SHAPES, BEST
VALUE IN THE WORLD.

Local Address:

38 George Street,
LUTON.



J. T. MITCHELL,

The new goalkeeper, comes from Sheffield United. His first professional club was Thorpe Hesley, who did splendidly that season and won two local cups. Sheffield United had been watching Mitchell, and signed him on. He has been with them five years. In his fourth season he played in 15 first team matches, including the Cup-tie at Chelsea, and last season 24 matches with the first team, including the Cup-tie at Huddersfield. His figure on the transfer list was £250, but Luton could not afford to pay that, and after considerable negotiation it was agreed that Luton should pay a certain sum and Sheffield United will have an interest if he is transferred from Luton. Mitchell is 24 years of age, stands 5 ft. 11 ins., and is about 12 st.

E. Pridmore,

*Jeweller and
Tobacconist,*

Has a Large Assortment of

Pipes, Pouches & all Smokers' Requisites

WATCH REPAIRS

A SPECIALITY.

**Chapel Street,
LUTON.**



JACK JARVIE,

Who plays at back, will be remembered by followers of the game for his connection with Tottenham. He is a Scotsman, and is only 22. It was while playing with Kirkintillan Rob Roy he came under the eye of Glasgow Maryhill. He played for them two seasons before coming South, and was selected twice to play for Glasgow, once against Aberdeenshire and once against Edinburgh. He stands 5 ft. 8 inches high, and weighs 11 st. 7 lbs.

MOTTO: "KEEP MOVING."



Goods ::
Stored. ::

Estimates
Free. ☞

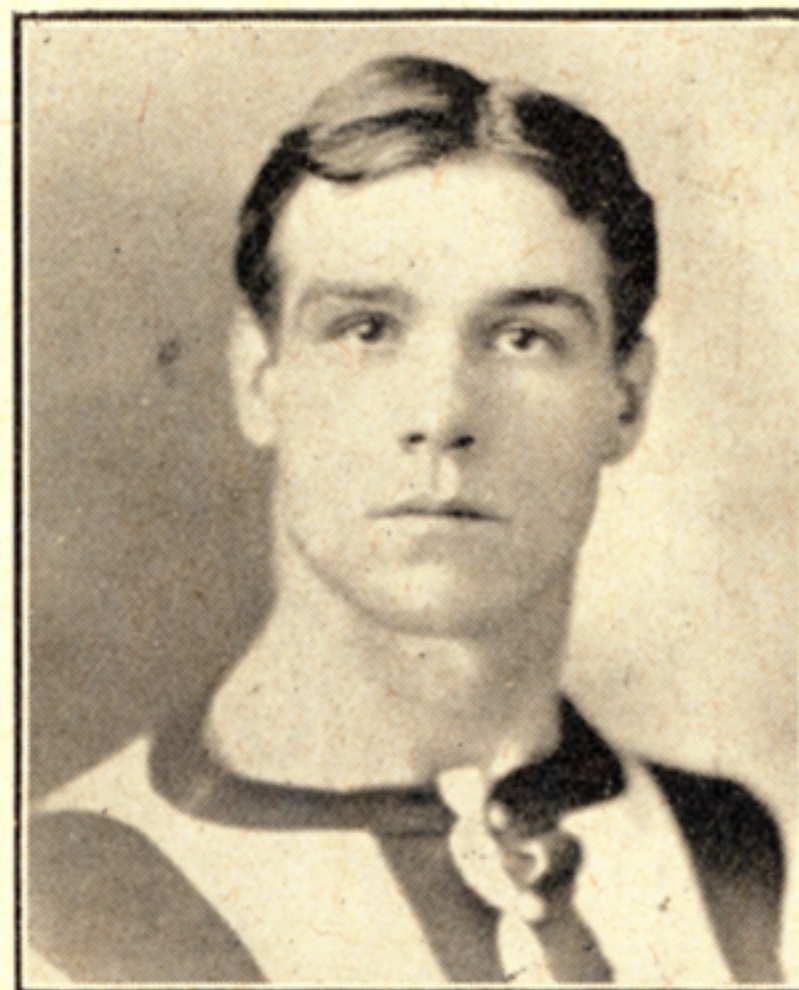
F. Merchant & Sons

COMPLETE HOUSE FURNISHERS,
CARPET & LINO WAREHOUSEMEN,
CASEMENT CURTAIN SPECIALISTS

8 & 10, Manchester St., Luton.

See Our Windows and Note Quality and Price.
All Goods Marked in Plain Figures,
REPAIRS. - BLINDS OF ALL KINDS.

THE LUTON ELECTRIC CARPET BEATING WORKS.



JAMES ROBINSON

who plays at full back, is an old clubmate of J. Mitchell, both having been with Sheffield United. Starting his football career with his Sunday School team at the age of 14, Robinson played two years later with Silverwood Colliery, first in the Sheffield Junior League and then in the Association League. Three seasons ago he was transferred to Sheffield United and played with them for two seasons. He had decided to assist his old club again until Luton asked for his services. Robinson, who is a total abstainer, is 23 years old, 5 feet 10½ inches in height, and 12 stone in weight.

W. BELL,
THE Tailor,
1889.

W. BELL,
THE Tailor,
1913.

NUFF SED.

'Phone
22 y 3.



FRED HAWKES.

Like his cousin Bob, Fred has always been associated with Luton, where he earned fame as a schoolboy footballer. This is his 11th season with the Club as a "pro," and he looks as youthful as ever. Also like Bob, he started in the forward line, but circumstances arose during the course of a match which led him to go into the half-back line, and he has been there ever since. Fred's form has been splendidly consistent. In height he is 5 ft. 8½ ins., and in weight 11 stone.

RYTO

FOR ALL

The World's Best

CYCLES

AND

MOTORS

Cash or E.P.

Exchanges, Repairs, etc.

SPECIALISTS IN ALL

B.S.A.

21a, New Bedford Rd.



R. W. FRITH,

Who is engaged for the centre-half position, is a native of Hassopp, in Derbyshire. He joined Sheffield United four seasons ago as a professional, and after one season with them he went to Derby County, with whom he has been during the last three seasons. He is of capital build for the centre-half position, being 5 ft. 11 in. in height and 12 stone in weight. He is quite young—21 years of age.

Lloyd, Partridge & CO.

(New Hudson Cycle Depot),

FOOTBALL SPECIALISTS.

Club Secretaries and all Footballers!



Please get our FOOTBALL
CATALOGUE. Examine our
Goods and note our Prices.

Quality Right!! Prices Unbeatable!!

Lists Post Free.

LLOYD, PARTRIDGE & Co.

NEW HUDSON CYCLE DEPOT,

Chapel St., Luton.



T. T. WILSON

is a centre half who came to Luton last season. He is a "trier" all the time. No man on the field works harder than Wilson; he is always in the thick of it. After four seasons with Middlesbrough, during which he frequently played in the first team, he was transferred to the Heart of Midlothian. He was with them one season, playing against many noted Scottish players, including J. Quinn of the Celtic, and then came to Luton. Wilson is 25 years of age, stands 5 feet 8 inches and weighs about 11 st. 8lb.

Stanley Welch,

51^D, STUART STREET, LUTON,

Bookseller, Stationer, Newsagent

We Can Score.

Our Goal is to give minute attention to all Orders.

Our Fixtures

Hold an up-to-date stock of Popular Novels at 4½d., 7d., 1/- and Books of all kinds. Leading Lines in Stationery. Post Card, Autograph and Cigarette Albums. Art Study Post Cards. Bibles, Hymnals, etc. W.H.S. Fountain Pens at 3/9 (2 years' guarantee). Toy and Picture Books of all kinds.

We Kick-off Early

For the delivery of Dailies and Periodicals. Can we supply you.

Time? - - Thank You.



R. M. HAWKES.

Bob's name will always come to the mind at the same time that Luton is mentioned. He has done an incalculable amount of service for the Club both as an amateur and also since he became a professional, the season before last. Besides taking part in a long string of amateur Internationals, he played for England against Ireland in 1906-7. He took part in the Olympic games, and has played football in every country in Europe where it is played. Bob, who has always been associated with Luton, stands 5 ft. 8½ ins. in height, and weighs 10 st. 8 lbs.

Footballs! Footballs! Footballs!

JOHN UNWIN

82, High Town Road, Luton,

Who is the Local Agent for FRANK SUGG'S
Football Material, has an unrivalled Selection of Football Requisites in stock.

FOOTBALL KING ...
LEAGUE BALL ...
THE CITY
THE BLOOMER ...
THE UNITED
THE CENTRE HALF ...
THE KLYNKER... ..
SCHOOL LEAGUE ...
JUNIOR LEAGUE ...
NATIONAL
BLADDERS
GOAL NETS
BOYS' FOOTBALLS

AT
CURRENT
CATALOGUE
PRICES.

FOOTBALLS LET OUT ON HIRE.

Jerseys, Shirts, Knickers, Boots, Shinguards,
A SPECIALITY.

Why send away when you can get the same
articles in the town and save carriage?



M. DONAGHY,

The new outside right, was born at Grange Town, near Middlesbrough. He did well in schoolboy football. In 1908-9 he played for South Bank in the Northern League; and in 1909-10 and the following season, being at Hammersmith for his college training as a teacher, he played regularly as an amateur for Fulham Reserves. In 1911-12 he was on the right wing for West Stanley (Durham), and scored 22 North-Eastern League goals, and was selected for the North v. South International trial game. Last season he scored 16 N.E. League goals for West Stanley. Last June he took up a situation at Battersea, and Luton signed him as a professional. Donaghy, who has done some capital things as a runner, is 21 years of age, 5 ft. 7 in., and 10 st. 7 lbs.

STORE YOUR CYCLE

AND HAVE

YOUR TEA AT THE SAME PLACE



A GOOD PLAIN TEA for **6^{d.}**

YOUR CYCLE STORED UNDER
COVER AT THE OLD SPOT for **2^{d.}**

Note Address:

T. J. WEBB,

Baker and Confectioner,

197, Dunstable Road, Luton,

Close to Ground. 2-1-5



A. WILEMAN

Is one of the men signed on from last season. His play merited his re-engagement. Figuring chiefly on the right wing, he put in some splendid work. He has a capital "drive," and found the net 17 times last season, being top scorer for Luton. Coming originally from the Burton-on-Trent district, he was with Chelsea two seasons. For them he played chiefly in the Reserves, but a number of times with the first team. The season before coming to Luton he was with Millwall. He is 24 years of age, stands 5 ft. 7 in., and weighs 11 stone.

W. F.
BOOTES

**WATCHMAKER,
JEWELLER and
SILVERSMITH.**



The Shop for Lucky Wedding
and Engagement Rings in 9,
18 and 22 carat Gold. All
sizes kept in stock. :: :: ::

15, Guildford Street, Luton.

THE CELEBRATED
Waltham Watches

— AT ALL PRICES, —

In Gold, Silver and Gold Filled.
Five Years' Warranty Given.



R. BREWIS

Is the centre-forward. He started in class football with Lincoln City, and scored 16 goals in 20 Second League games. The following season he was transferred to Burnley, who are said to have paid £500 for him. He was with Burnley two seasons, and scored 55 goals. His next club was Merthyr Town, and he helped them into the First Division of the Southern League. Going to Hartlepool United, in the North-Eastern League, he had another successful time, and scored 29 goals for them last season. He is 5 ft. 10 ins. in height, and weighs about 12 st. 7 lbs.

"FOSFO" Will fortify
"FOSFO" you against
"FOSFO" all weathers.

"FOSFO" IS THE TONIC
 That Invigorates and Strengthens.

1/- PER BOTTLE

— IF —

YOU SHOULD CATCH COLD

ONE **1/-** BOTTLE OF

DR. BROWNE'S
INFLUENZA MIXTURE

WILL PUT YOU RIGHT.

H. E. COCKER,

Post Office

Pharmacy,

DUNSTABLE ROAD

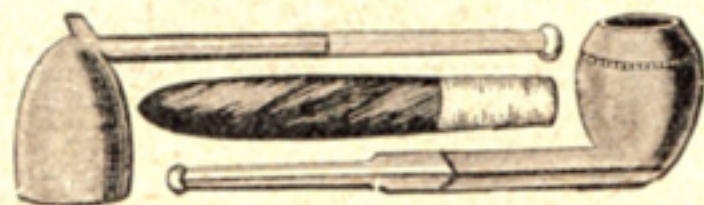
— AND —

KENILWORTH ROAD.



E. SIMMS,

Who comes from Barnsley, is a centre-forward who can also fill the inside left or inside right positions. The splendid play of Lillicrop, their regular first team centre, made it practically impossible to give Simms a chance in Barnsley's first team after he signed on for them at the middle of last season, so he became their regular centre-forward in the Central League team and averaged almost a goal per match. They wanted him to sign on again at the end of the season, but he stood out on financial matters. His previous team was Murton Colliery. Simms is 21 years of age, 5 ft. 9 in. in height, and 11 st. 10 lbs. in weight.



Chas. BARKER,

16, Manchester Street,
— **Luton.**

Wholesale and

Retail : : :

Tobacconist

PUBLICANS AND THE
TRADE SUPPLIED. ::

Chas. Barker's Cigars

Are the Footballers' Friend.



F. ROLLINSON,

Who has played at inside left for Portsmouth for the past two seasons, is 25 years of age, stands 5 ft. 8½ inches high, and weighs 11½ stone. He is a Sheffield man, and that his abilities as a footballer were early recognised may be gathered from the fact that previous to being transferred to Portsmouth he had played for six seasons with Sheffield Wednesday. In the year that Newcastle won the Cup and Aston Villa the League, Sheffield Wednesday beat both teams, and it was Rollinson who scored two goals out of three against Newcastle and all three goals against the Villa.

Luton Town F.C. Fixtures, Season 1913-14.

DATE.				GOALS.			DATE.				GOALS.	
1913.				FOR	AG'T.		1913.				FOR	AG'T.
Sept.	1	Mon.	Brentford SA .. H	1	0	Read the "Luton News" for Football Reports	Dec.	25	Xmas Day	Newport SL .. A	0	2
"	6	Sat.	Brentford SA .. A	3	2		"	26	Box'g Day	Newport SL .. H	1	1
"	10	Wed.	Croydon Common SA .. H	0	0		"	27	Sat.	Croydon Common SL .. A	1	1
"	13	Sat.	Mardy SL .. H	1	0		1914.					
"	17	Wed.	Abertillery SL .. A	2	1		Jan.	3	Sat.	Llanelly SL .. H	1	6
"	20	Sat.	Mardy SL .. A	2	1		"	10	"	F.A. Cup ..	4	0
"	24	Wed.	Croydon Common SA .. A	1	0		"	17	"	Caerphilly SL .. H	9	0
"	27	Sat.	Treharris SL .. H	6	0		"	24	"	Caerphilly SL .. A	9	0
Oct.	1	Wed.	Watford SCC .. H	2	1		"	31	"	Pontypridd SL .. A	3	1
"	4	Sat.	Barry SL .. A	2	0		Feb.	4	Wed.	Newport SA .. H	3	1
"	8	Wed.	Brighton SA .. H	2	0		"	7	Sat.	Brentford SL .. H	3	1
"	11	Sat.					"	14	"	Aberdare SL .. A	3	1
"	15	Wed.	Portsmouth SA .. H	4	3		"	21	"	Barry SL .. H	3	1
"	18	Sat.	Treharris SL .. A	2	1		"	26	Thur.	Newport SA .. A	5	1
"	22	Wed.	Brighton SA .. A	1	2		"	28	Sat.	Llanelly SL .. H	2	0
"	25	Sat.	Abertillery SL .. H	6	0		Mar.	7	"	Ton Pentre SL .. H	2	0
"	29	Wed.	Portsmouth SA .. A	2	1		"	14	"	Swansea SL .. A	1	0
Nov.	1	Sat.	Llanelly SL .. A	2	3		"	18	Wed.	Southend SA .. H	4	0
"	5	Wed.	Cardiff City SA .. A	1	3		"	21	Sat.	St. Albans City F .. A	1	0
"	8	Sat.	Pontypridd SL A	2	3		"	28	"	Mid Rhondda SL .. A	1	0
"	12	Wed.	Southend SA .. A	0	0		Apr.	4	"	Swansea SL .. H	2	0
"	15	Sat.	Ton Pentre SL .. A	4	1		"	10	Good Friday	Stoke SL .. H	2	0
"	19	Wed.	Southampton SA .. H	3	1		"	11	Sat.	Brentford SL .. A	2	0
"	22	Sat.	Mid Rhondda SL .. H	8	1		"	13	Easter Mon.	Stoke SL .. A	2	0
"	29	"	F.A. Cup Croydon .. H	3	0		"	14	Easter Tues.	Cardiff City SA .. H	2	1
Dec.	3	Wed.	Southampton SA .. A	4	0		"	18	Sat.	Croydon SL .. H		
"	6	Sat.	Pontypridd SL .. H	3	0		"	25	"			
"	13	"	F.A. Cup South Shields ..	0	0							
"	20	"	Aberdare SL .. H	7	0							

SL Southern League. SA Southern Alliance.
 SCC Southern Charity Cup. F Friendly.

**YOU WILL
NEVER LOSE**

In Fact You Will Decidedly Gain
 the Best Possible Value if You Pur-
 chase Your Clothing & Outfitting

AT

HARRY BROOKER'S,
 Tailor and Outfitter,
47, Manchester Street.

Eveling

CAN

Supply You with Football

**Jerseys
Knickers
Hose
Belts, etc.**

In any COLOUR or DESIGN at Prices that
Players will appreciate.

WHEN ASKED—

WHERE SHALL WE GET OUR JERSEYS?

SAY—

EVELING'S, 

1, 3 & 7a, CHAPEL ST. **Luton**
37, WELLINGTON ST.



JAMES WILKIE,

Who has been described by the "Express" as "one of the best outside lefts of the day," started playing football at a very early age in the suburbs of Birmingham, where he was born 24 years ago. Meeting with plenty of success, he went to a Black Country club called Langley St. Michael's, members of the Birmingham Combination, and from there to Birmingham, with which club he played as an amateur. Business then took him to London. He was then introduced to Dulwich Hamlet, in the Isthmian League, and at the end of the season was picked to play for the Rest of the League against the Champions. Dulwich were that year in the finals of the Surrey Senior Cup, London Cup, and the fourth round of the English Amateur Cup. It was in these matches that he was noticed by Chelsea, for whom he signed at the end of the season. Last year, with Chelsea, he had a good season, though his playing was entirely with the Reserves, a position which cannot be helped when associated with a Club having 40 players. He stands 5 ft. 10 inches high, and weighs 11 st. 6 lbs.

Before the Match,

DINNER.



After the Match,

TEA.



After the Pictures,

SUPPER.



Whether it is Dinner, Tea or Supper, the

Best, most convenient and
most comfortable place is

DUMPLETON'S RESTAURANT

Bute Street, Luton.

Good Accommodation for Cyclists.

LARGE or SMALL PARTIES CATERED FOR

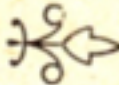
Luton Clarence Fixtures, 1913-14.

Sept. 6	Gray's Athletic	Home
" 13	Finchley	Away
" 20					
" 27	Tuffnell Spartan (English Cup Tie)	..			Home
Oct. 4	Tuffnell Park	Home
" 11	English Cup				
" 18	Catford Southend		Home
" 25	Romford	Away
Nov. 1	English Cup				
" 8					
" 15	Barnet and Alston		Home
" 22	Metrogas "A"	Away
" 29					
Dec. 6	Beds. Cup				
" 13					
" 20	Chelmsford	Away
" 25					
" 26					
" 27	Enfield	Home
Jan. 3	Amateur Cup				
" 10	Enfield	Away
" 17	Beds. Cup				
" 24	Metrogas "A"	Home
" 31	Finchley	Home
Feb. 7	Hastings and St. Leonards	Away
" 14	Chelmsford	Home
" 21	Beds. Cup				
" 28					
Mar. 7	Chesham Town	Away
" 14					
" 21	Romford	Home
" 28	Chesham Town	Home
April 4	Barnet and Alston	Away
" 10					
Good Fri.	Catford Southend	Away
April 11	Hastings and St. Leonards	Home
" 13					
Easter Mon	Gray's Athletic	Away
April 18	Tuffnell Park	Away
" 25					

**TAKE YOUR
UMBRELLA
WITH YOU :**



IT MAY RAIN AND YOU
WILL BE GLAD OF IT, ———
ESPECIALLY IF IT COMES FROM

CHATTELL 

The Actual Manufacturer,
Barber's Lane, Luton.

RE-COVERS from 1/6.

REPAIRS OF EVERY DESCRIPTION.

Work called for and delivered, on receipt
of postcard, without extra charge.

LUTON TOWN FOOTBALL SUPPORTERS' CLUB.

Headquarters : Edwards' Restaurant, Manchester Street.

Meeting Night, Friday.

President : Mr. J. W. Green, J.P.

Vice-Presidents : Mr. Cecil Harmsworth, M.P., Mr. J. O. Hickman,

Councillor A. A. Oakley, J.P., and the Rev. E. B. Mahon.

Chairman : Mr. R. Fuller. *Treasurer :* Mr. F. J. Crick.

Secretary : Mr. F. J. Hunt, 15, Dudley Street.

Assist. Secs. : Mr. P. Brightman and Mr. P. Crick.

IMPORTANT DATES.

English Cup.

Qualifying Competition.

1913. Sep. 13—Extra Prel.

Round

„ 27—Prel. Round

Oct. 11—1st „

Nov. 1—2nd „

„ 15—3rd „

„ 29—4th „

Dec. 13—5th „

Competition Proper.

1914. Jan. 10—1st Round

„ 31—2nd „

Feb. 21—3rd „

Mar. 7—4th „

„ 28—Semi-Finals

Apl. 25—Final

Luton Town exempted till Fourth Round Qualifying Competition. Other local clubs competing are Luton Clarence, Crusaders, Amateurs, Reliance and Trinity.

Amateur Cup.

Qualifying Competition.

1913. Oct. 4—1st Round.

„ 18—2nd „

Nov. 1—3rd „

„ 22—4th „

Luton Clarence exempted till the

Competition Proper in January.

Competition Proper.

1914. Jan. 3—1st Round

„ 17—2nd „

Feb. 14—3rd „

„ 28—4th „

Mar. 14—Semi-Finals

April 4—Final

Beds. Senior Cup.

1913. Nov. 8—Prel. Round

Dec. 6—1st Round

1914. Jan. 17—2nd Round

Feb. 21—Semi-Finals

Apl. 13—Final

Beds. Junior Cup.

1913. Oct. 18—Prel. Round

Nov. 15—1st Round

Dec. 13—2nd Round

1914. Jan. 24—Com. Pr. 1st Rd.

Feb. 28—Semi-Finals

Apl. 13—Final

H. W. Covington,

THE UP-TO-DATE

TOBACCONIST.

5, Cheapside

— AND —

41, Manchester St.,

LUTON,

And at BEDFORD.

LARGEST



ASSORTMENT.

Bedfordshire Football Association.

SEASON 1913-14.

ONE Hundred and thirty Clubs, seven Leagues, and two Cup Competitions were directly affiliated with the Bedfordshire County Football Association last season. Time was when it seemed very improbable that the number of clubs in our County would reach 100, but for several seasons now the total has gone well beyond the century, and it is expected that before long the number will reach 150. These facts show what strides the game has made in our County under the guidance of the County Association. The two County Cup Competitions also attract much interest, and last year again no less than 48 Clubs entered the Junior Cup Competition. This trophy went "North," Potton Town beating Dunstable Bagshawe's in the Final at Bedford. But the Senior Cup has again found a resting-place in Luton. The Crusaders are the proud possessors of the trophy at present. They won it after playing a record number of matches—10 in all, to be precise. They met Wootton Blue Cross, Luton Clarence (five times), Biggleswade in the semi-final, twice, and the Reliance twice in the final. Their memorable struggles with the Clarence will long be remembered. Five times the Clubs met. They played in all 9 hours and 52 minutes, the Crusaders eventually winning by a penalty goal scored in the last two minutes of a game which lasted 2 hours and 20 minutes. The North Beds Charity Cup is also in Luton. The Albion and the Amateurs proved stronger than the other Clubs in the Competition, the Albion eventually beating the Amateurs in the re-played final. So the two Senior trophies come to Luton. And the Amateurs also brought another honour to Luton in winning the Championship of the Bedford League.

The officers of the Association are:—

President: Mr. E. Lyonel Finch, 8, Clarendon road, Bedford.



Do You Play

Football

?

Oh yes !

Then the
best place
to get your

FOOTBALL

BOOTS

IS AT

E. WILLIAMS,

15, PARK SQUARE.

He holds a very big stock, all Regulation Patterns,
as sanctioned by the Football Association.

Vice-Presidents: Mr. J. H. Scott, 121, Hitchin road, Luton, and Mr. M. A. Barber, 86, Midland road, Bedford.

Hon. Sec. and Treas.: Mr. Albert E. Ansell, 79, Havelock road, Luton.

Auditors: Mr. G. W. Walker, Luton, and Mr. H. Eaton, Bedford.

Executive Council: Mr. E. Wood, Biggleswade; Mr. E. Humphreys, 35, Commercial road, Bedford; Mr. E. Day, Avondale road, Luton; Mr. C. Green, 73, Hazelbury Crescent, Luton; Mr. F. Drage, 4, Howbury street, Bedford; Mr. C. J. Larkinson, Hitchin street, Biggleswade; Mr. S. Kilby, 57, Tavistock street, Luton.

List of Affiliated Clubs.

A Name and Address of Secretary.	B Ground.
C Dressing Room.	D Colours.
Ampthill St. Andrews.	A R. Seabrook, Church Street, Ampthill.
Arlesey Asylum.	A J. Davies, Hitchin Road, Arlesey.
Arlesey Juniors.	A G. C. Morton, Brickyard House, Arlesey, Hitchin.
Aspley Guise and Woburn Sand Stars.	A W. Edgington, High Street, Woburn Sands.
Barton Rovers.	A C. V. Ward, Manor Road, Barton.
Bedford Adams Juniors.	A F. W. Beart, 39, Embersley Road, Bedford.
Beds Agricultural Institute.	A V. C. Fishwick, Ridgmont, Aspley Guise.
Bedford Amalgamated (Thursday).	A F. Lee Evans, 16, Bower Street, Bedford.
Bedford Bushmead Albion (Thursday).	A H. A. Welford, 35, York Street, Bedford.
Bedford Baptist Church United.	A P. W. Northwood, 167, Castle Road, Bedford.
Bedford Celtic (Thursday).	A E. J. Brewer, 12, Eastville Road, Bedford.

STRANGE & Co.

Established over 70 years.

The Popular Outfitters,

CAN SUPPLY YOU WITH
GOOD UP-TO-DATE —

Clothing, .

Overcoats

and Suits . .

At most reasonable cost.
To obtain an excellent
fit and satisfaction in
wear go to - - -

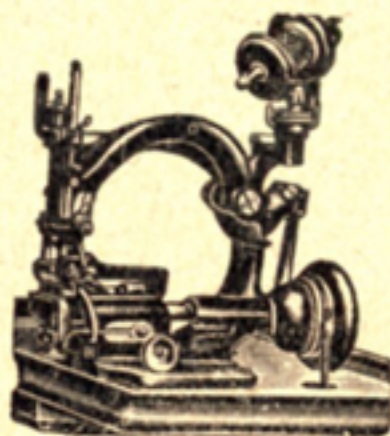
STRANGE & Co.'s

Gent's & Boys' Clothing,
Hats, Caps, Ties, Shirts,
Hosiery, Gloves, :: ::
Mackintoshes, &c. ::

A Choice Range of New Materials in the Tailoring
Department. Patterns sent to any Address.

36 & 38 Wellington St.,
LUTON.

Bedford Church Cadets. A T. G. Gunnell, 111, Hurst
Grove, Bedford.
Bedford Clarence. A E. G. Stratton, 14, Park Road West,
Bedford.
Bedford East Anglian Royal Engineers. A W. S. Davis,
31, St. Leonards Avenue, Bedford.
Bedford Falcon. A W. Tysoe, 15, Greenhill Street,
Bedford. B Russell Park. C Burnaby Arms. D Red
and White Stripes.
Bedford Lynton Works (Thursday). A C. C. Crouch, 11,
Churchville Road, Bedford.
Bedford Melbourne Fosse (Thursday). A W. Robinson,
71, Westbourne Road, Bedford.
Bedford Melrose. A T. G. Cooper, 10, Britannia Place,
Bedford.
Bedford Opposites (Thursday). A R. D. Goddard, 50,
High Street, Bedford.
Bedford Queen's Park Rangers. A J. Craig, St. Paul's
Road, Bedford.
Bedford Queen's Park United (Thursday). A E. F.
Atkins, 43, Coventry Road, Bedford.
Bedford Springfield Rangers. A P. W. Thompson, 200,
Bedford Road, Kempston.
Bedford Town. A E. W. Taylor, 108, Howbury Street,
Bedford. B Ford End Road. C Horse and Groom.
D Red and White.
Bedford United. A T. Parker, 70, Cauldwell Street,
Bedford.
Bedford Victoria. A A. E. Elton, 112, Grey Friars Walk,
Bedford.
Biddenham United. A W. H. Mills, 82, Honey Hill
Road, Bedford. B Biddenham. C Three Tuns,
Biddenham. D Black and Amber.
Biggleswade and District. A C. E. Green, Shortmead
Street, Biggleswade. B Fairfield C Swan Hotel.
D Green and White.
Biggleswade Juniors. A F. N. Clark, jun., Biggleswade.
Biggleswade Victoria. A T. Ferguson, High Street,
Biggleswade.
Caddington All Saints. A W. Gazeley, Caddington.
Clapham. A T. W. Jones, Clapham.
Dunstable Bagshawe's. A F. Cooke, Bigthan Road,
Dunstable. B Church Street. C Royal Oak. D Red.



"Dresdensia."

W. FROST,

ENGINEER & MACHINIST,

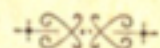
28, Collingdon St.,

LUTON.

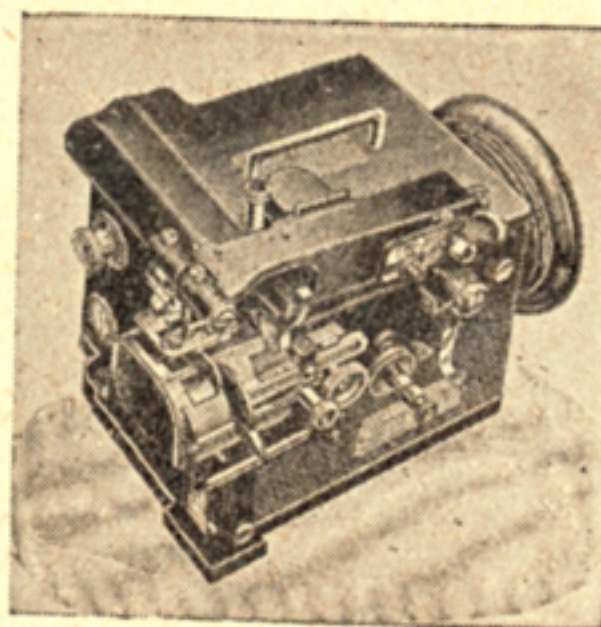
AGENT FOR THE CELEBRATED

"LUTONIA & DRESDENSIA"
Straw Hat Machines.

**Lowest
Prices.**



**Cash or
Easy
Payments**



Dunstable Town. A A. J. Dumbleton, 129, Victoria Street, Dunstable. B Bull Pond Lane. C Baker's Restaurant, High Street. D Green and White Stripes.
Eaton Bray. A T. Proctor, Bower Lane, Eaton Bray, Dunstable.
Eaton Socon. A A. McKecknie, Eaton Socon, St. Neots. D Black and Amber.
Eaton Socon United. A A. E. Sparrowe, Eaton Socon Vicarage, St. Neots.
Felmersham United. A R. B. Turner, Felmersham, Sharnbrook.
Flitwick. A R. Dillingham, Flitwick, Ampthill.
Goldington. A J. Ashworth, "The Swan," Goldington. B The Green. C Swan Inn.
Great Barford. A W. T. Moor, Great Barford, St. Neots.
Greenfield and Pulloxhill. A J. Russell, The Chequers, Pulloxhill, Ampthill.
Harlington Rangers. A H. Reek, "Carpenter's Arms," Harlington.
Harrold United. A G. Thew, Harrold, Sharnbrook. C Wheatsheaf. D Blue and White Stripes.
Heath United. A A. Miles, Heath, Leighton Buzzard. B Handpost Field. D Black and Red.
Henlow. A C. C. Handley, High Street, Henlow.
Hinwick House. A J. H. T. Hopkins, Hinwick House, Nr. Wellingborough.
Hockliffe and District. A W. Creamer, Hockliffe, Dunstable. C White Hart Hotel.
Holwell. A H. Baines, Holwell, Hitchin.
Houghton. A C. Dudley, 3, King Street, Dunstable.
Kempston Athletic (Thursday). A E. Whitworth, Lincoln House, Kempston.
Kempston Rovers. A F. W. Smith, 46, King Street, Kempston.
Kempston Stars. A H. Turner, 75, High-street, Kempston.
Kempston Thursday. A W. A. Riddy, 134, Bedford Road, Kempston.
Langford. A T. Rogers, The Leys, Langford. C Wrestlers Inn. D Red.
Leighton Ferndale. A J. Hyde, 28, East Street, Leighton Buzzard.
Leighton Templar Guild. A H. H. Theobalds, 46, Ashwell Street, Leighton Buzzard.

LUTON'S Premier Tailor.

(Over 40 years in Wellington St.)

GIVE HIM A TRIAL.
SATISFACTION ASSURED.

FAIR PLAY - **Always.**
BEST VALUE

Luton's
Fashion
Centre
For
Men.



W. LACEY & SON

City Tailors and Outfitters,
14, WELLINGTON STREET,
LUTON.

Leighton Town. A H. V. Jones, Somerville, South Street, Leighton Buzzard. B Lake Street. C Challenge Restaurant. D Blue and Amber.

Leighton Thursday. A A. Fletcher, 51, High Street, Leighton Buzzard.

Luton Albion. A F. Elms, 17, Beech Road, Luton. B Pope's Meadow. C On Ground. D Green.

Luton Amateurs. A A. Gilder, 35, Moor Street, Luton. B The Dell. C On Ground.

Luton Argyle. A D. F. G. Janes, 13, Blythe Place, Luton.

Luton Clarence. A S. Kilby, 57, Tavistock Street, Luton. B Town Ground, Ivy Road, Dunstable Road. C On Ground. D Black and White Stripes.

Luton Clyde. A S. H. Fookes, 8, Grove Road, Luton.

Luton Commercial Cars. A D. T. Dockrill, 20, Havelock Road, Luton.

Luton Co-operative Athletic (Wednesday). A C. S. Emerton, 95, Hitchin Road, Luton.

Luton Corinthians. A E. J. Grundy, 94, Dunstable Road, Luton.

Luton Crusaders. A A. Pease, "Dropmore," Hitchin Road, Luton. B Pope's Meadow. C On Ground. D Dark Blue and White.

Luton C.W.S. Cocoa Works. A C. Chipperfield, 14, Shirley Road, Luton.

Luton Davis Athletic. A W. Hammett, 82, Grange Road, Luton.

Luton Dunstable Road Mission. A B. Puddephatt, 2, Malvern Road, Luton.

Luton Falcon. A J. Dean, 24, Shirley Road, Luton.

Luton Glendale. A A. Frost, 82, Park Road West, Luton.

Luton G.N. Athletic. A C. Fensome, G.N.R. Goods Depot, Luton.

Luton Granville. A F. G. Ansell, Talbot Road, Luton.

Luton Hoo. A H. Cresswell, Luton Hoo Gardens, Luton.

Luton Kenilworth Rangers. A S. Bysouth, 10, Vicarage Street, Luton.

Luton Kent's Athletic. A B. W. Willisson, 32, Spencer Road, Luton.

Luton Knollside Guild. A A. Horgan, 117, Ridgway Road, Luton.

Luton Midland Athletic. A B. Clarke, 225, Hitchin Road, Luton. B Old Bedford Road. C On Ground. D Chocolate.

The FOOTBALL GROUND

Is only a Short distance from the
Leading Temperance Hotel
and Restaurant, i.e.,

The Franklin

THE MOST UP-TO-DATE RESTAURANT IN
THE TOWN.

Front of the Town Hall,
GEORGE STREET, LUTON

* * *

The Best of Refreshments.
Splendid Accommodation.
Visiting Teams well Catered for.
Prices very Moderate.

This House is well-known and Specially
Recommended.

HARRY JONES - Proprietor.

Luton Olympic. A C. W. Fensome, 41, Waller Street,
Luton. B Winsdon Hill. c On Ground. d Black
and White stripes.
Luton Phoenix. A E. F. Dimmock, 49, Cowper Street,
Luton.
Luton Reliance. A S. W. Ward, 60, Talbot Road, Luton.
Luton Rosedale. A J. Vass, 45, Chapel Street, Luton.
Luton Rovers. A P. Biggs, 5, Gloucester Road, Luton.
Luton Silver Star. A S. Bonfield, 57, Ridgway Road,
Luton. B Old Bedford Road, Luton. c On Ground.
d Black and White.
Luton Skefko Athletic. A E. Blacknill, "Clovelly,"
Selbourne Road, Luton.
Luton Social Club. A W. Hill, 7, Clifton Road, Luton.
d Navy blue.
Luton Stanley. A S. Baldock, 5, Vernon Road, Luton.
Luton St. Saviour's. A E. Clarke, 9, Princess Street,
Luton.
Luton Town. A C. Green, 73, Hazelbury Crescent,
Luton. B Ivy Road. c On Ground.
Luton Trinity. A W. Randall, 106, Reginald Street,
Luton.
Luton Unity (Wednesday). A E. J. Rattle, 9, Cheapside,
Luton.
Luton Vauxhall Motors. A J. Eyre, 70, May Street,
Luton.
Luton Vendale. A V. Lister, 36, Shirley Road, Luton.
Luton Wednesday Hotspurs. A B. Frost, 4, Cardiff
Grove, Luton.
Luton Wednesday Ramblers. A A. L. Mead, 12, Chats-
worth-road, Luton.
Luton Wednesday Rovers. A W. Edwards, 21, Winsdon
Road, Luton. B Pope's Meadow. c On Ground.
d Navy blue.
Luton Wednesday Villa. A A. W. Anderson, 34, High-
fields Road, Luton.
Luton West Ward Rangers. A R. S. Pakes, 21, Dallow
Road, Luton.
Markyate. A H. Brandham, 7, William Street, Mark-
yate.
Maulden. A C. Kirby, George Street, Maulden, Ampthill.
Meppershall. A H. Rainbow, Church End, Meppershall,
Shefford.

BEFORE OR AFTER THE MATCH

CALL AT
The West End
Toilet Saloon

G. J. Burchmore

217, Dunstable Road

(OPPOSITE LEAGRAVE TURN).

All Leading Brands of Tobacco and Cigarettes.

AGENT FOR WILSON'S S.P. SNUFF.

Noted for a Good 2d. Cigar.

**Every Requisite
for the Smoker.**

Newspapers and Periodicals.

PICTURE POSTCARDS in great variety.

Old Warden. A G. C. Radford, 19, Old Warden, Biggleswade.

Potton Town. A H. Lawson, Station Road, Potton.
B Recreation Ground. D Sky blue.

Sandy Albions. A H. Finding, St. Neots Road, Sandy.
B Girtford. C New Inn. D Green.

Sharnbrook. A E. F. Adams, Park Lane, Sharnbrook.
B The Sparrocks. C Swan with Two Necks. D Scarlet
and Navy Blue Halves.

Sheffield United. A G. Dilley, Sheffield.

Shillington. A H. Elms, Chestnut Tree Farm, Shilling-
ton, Hitchin. B Park Side. C Five Bells. D Green.

Silsoe United. A G. Squires, 80, West End, Silsoe,
Amphill.

Stondon Rovers. A J. Scott, Lower Stondon, Sheffield.

Stopsley. A W. W. Crick, Ramridge End, Luton. D
Claret.

Stotfold. A P. Hyde, Regent Street, Stotfold. C White
Swan. D Black and Amber.

Stotfold Athletic. A L. Seymour, Common Road, Stot-
fold, Baldock.

Sundon. A H. Roberts, 50, Windsor Street, Luton.

Toddington Stars. A W. Horley, High Street, Toddington.

Waterlow's Athletic (Dunstable). A A. A. White, 34,
Princes Street, Dunstable.

Westoning Ramblers. A H. Gazeley, Westoning, Ampt-
hill.

Wilstead. A C. H. Francis, Church Road, Wilstead.

Wingfield and Tebworth United. A W. Kingham, Wing-
field, Hockliffe.

Woburn Town. A F. Randall, 54, Leighton Street,
Woburn. B Newport Road. C Magpie Hotel. D
Chocolate and Sky Blue.

Woodside United. A S. Grimsdale, 71, Cowper Street,
Luton. B Slip End Recreation Ground. C Red Lion,
Woodside. D Green and White Sleeves.

Wootton Blue Cross. A R. B. Walker, Wootton, Bedford.

Wyboston. A S. Dorrington, Wyboston, St. Neots.

Wymington Stars. A T. Squires, High Street, Wyming-
ton. B Poddington Road. C The New Inn, Wyming-
ton. D White.



The Pianola Piano

ON TERMS TO SUIT YOUR
OWN CONVENIENCE :: ::

S. FARMER & Co., Sole
Local
Agents,

2, WELLINGTON ST. & 85, GEORGE ST., LUTON.



CLARENCE F.C.

[Photo, Wm. H. Cox, Luton.]
Top Row (reading left to right):
S. Kilby, Secretary, H. S. Parsons, J. R. Elvey, S. Pestell, H. G. Bacon, W. G. Toyer,
W. C. Ansell, W. Pakes, *Trainer*.
SECOND ROW: E. Rogers, A. Eling, P. Lovell, J. Conquest, S. Hoar.

The well-known CLOCK HOUSE

For . .

Tele. 21 x 5.

**F
O
O
T
B
A
L
L**

Boots.



Agents for the Well-known "CERT BRAND."

PUBLIC BENEFIT BOOT CO.,

ALSO
ST. ALBANS.

Park Square, Luton.



CRUSADERS F.C.

[Photo, Wm. H. Cox, Luton.]

Top Row (reading left to right)—

G. Whitelock, Com., T. Boston, B. Fensome, W. F. Bunker, R. Morsley,
L. Ruffett, T. Fleckney, A. Chalkley, Trainer.

Second Row—A. Barrett, S. D. Ives, O. Odell, H. Gregory, W. Barton, A. Impey,
A. Pease, Secretary.

Players or Spectators

CAN BE FITTED UP FOR SEASON 1913—14
IN A STYLE WHICH GUARANTEES
SATISFACTION.



Jerseys, Shirts
and Knickers,
Football Stockings,
—&c.
Rainproof Coats,
Overcoats, and
Mackintoshes,
Smart Tailor-made
Winter Suits.

Harry Inwood,
The SMART TAILOR and OUTFITTER,
CHAPEL ST. and STUART ST.,
LUTON.



[Photo, Wm. H. Cox, Luton.]
LUTON AMATEUR F.C., 1912-13.
STANDING - A. Gilder, D. Brodie, O. F. Small, R. Elvey, A. Webdale.
MIDDLE ROW (Seated) - A. Inwoods, W. Lane, R. Brown, S. Squires, H. Squires,
F. Mander.
FRONT ROW - R. Fyson, G. Meadows.

GO ON! NOW SHOOT! WHAT DID I TELL YOU?

How often you hear such phrases on the Football Field—

How often also is the clothing of a well-dressed man criticised, sometimes favourably, sometimes otherwise.

If you wish to be favourably criticised wear one of our

NOTED SUITS OR OVERCOATS.

A SPLENDID STOCK

NOW ON SHOW AT

Foster Brothers

Clothing Company, Ltd.,

22, Market Place, LUTON,

— ALSO AT —

3, High St., DUNSTABLE.

Luton and District Football League.

Fixtures 1913-14 (Divisions I. & II.)

Division I.

- A Davis' Athletic
- B Reliance
- C Trinity
- D Silver Star
- E Waterlow's Ath.
- F Skefko
- G Crusaders
- H
- I Vauxhall Athletic
- J Rosedale
- K Albion
- L Midland Athletic

Section A. Division II. Section B.

- A Corinthians
- B Granville United ...
- C Kenilworth Rangers
- D West Ward Rangers
- E Kent's Athletic
- F Woodside United ...
- G Stanley
- H Rovers
- I Barton Rovers
- J Toddington
- K Ampthill Town
- L Stopsley
- Sundon
- Skefko
- Walden Rangers
- Cocoa Works
- Waterlow's Athletic
- Houghton
- Argyle
- Bagshawe's Recreation
- Falcon
- Phoenix
- St. Saviour's

DIVISION I.

First-named Club plays at home on First Date.
Second-named Club plays at home on Second Date.

Sept. 6	Sept. 20	Oct. 4	Oct. 18	Oct. 25	Nov. 1
Jan. 3	Jan. 10	Jan. 24	Jan. 31	Feb. 7	Feb. 14
L v A	B v L	L v C	E v K	K v F	F v L
K v B	C v K	K v D	G v I	J v G	G v K
J v C	D v J	J v E	C v A	I v H	H v J
H v E	F v H	I v F		A v D	D v B
G v F		H v G		C v B	
		A v B			
Nov. 15	Nov. 22	Nov. 29	Dec. 13	Dec. 20	Dec. 27
Feb. 21	Feb. 28	March 7	March 14	March 21	March 28
G v L	H v L	L v I	J v L	K v L	K v A
K v H	I v K	K v J	I v A	A v J	J v B
A v F	G v A	A v H	H v B	C v H	G v E
B v E	F v B	G v B	G v C	D v G	
	E v C	C v F	F v D	E v F	
		D v E			
Sep. 13, Jan. 31	Sep. 27, Jan. 10	Oct. 11, Oct. 25	Dec. 6 Jan. 3		
F v J	E v I	E v L	I v D		
D v L					
Sep. 20, Feb. 14	Oct. 11, Feb. 21	Nov. 15, Mar. 28	Mar. 21, Apr. 4		
A v E	J v I	I v C	I v B		
	C v D				

F. L. HARWOOD

(Late T. LORD),

Kenilworth Stationery Stores,
Dunstable Road, LUTON,

FOR
Stationery, Local and Fancy
Picture Post Cards. Fancy
Goods of all descriptions. ..
All the Newest Fiction. —
Special Selection of 6d. and
7d. Novels. —

Choice Selection of all the Principal Brands of
TOBACCO, CIGARS, CIGARETTES, &c.,
always in stock.

Daily and Weekly Papers Promptly Delivered.

Top Quality. Bottom Prices.

DIVISION II. (Section A. & Section B.)

Section A. First-named Club plays at home on First Date.
Second-named Club plays at home on Second Date.
Section B. Second-named Club plays at home on First Date.
First-named Club plays at home on Second Date.

Sept. 13	Sept. 20	Sept. 27	Oct. 4	Oct. 11	Oct. 25
Jan. 3	Jan. 10	Jan. 17	Jan. 31	Feb. 7	Feb. 14
L v A	B v L	L v C	D v L	L v E	F v L
K v B	C v K	K v D	E v K	K v F	G v K
J v C	D v J	J v E	F v J	J v G	H v J
I v D	E v I	I v F	G v I	I v H	E v A
H v E	F v H	H v G	C v A	A v D	D v B
G v F		A v B		B v C	
Nov. 1	Nov. 8	Nov. 22	Nov. 29	Dec. 6	Dec. 20
Feb. 21	Feb. 28	Mar. 7	Mar. 14	Mar. 21	Mar. 28
L v G	H v L	L v I	J v L	L v K	K v A
K v H	I v K	K v J	I v A	A v J	J v B
J v I	G v A	A v H	H v B	B v I	I v C
A v F	F v I	B v G	G v C	C v H	H v D
B v E	E v C	C v F	F v D	D v G	G v E
C v D		D v E		E v F	

EXCEPTIONS.

Jan. 13th, Jan. 3rd.	Sept. 20th, Jan. 10th.
St. Saviour's v. Skefko.	Waterlow's v. Falcon.
Phoenix v. Walden Rangers.	Oct. 4th, Jan. 31st.
	Waterlow's v. St. Saviour's.

LUTON AND DISTRICT FOOTBALL LEAGUE.

President: J. O. HICKMAN, Esq.

Senior Vice-President: C. HARMSWORTH, Esq., M.P.

Chairman of Executive Committee: Mr. CHAS. GREEN.

Referees' Secretary:

Mr. A. S. FLETCHER, Frederic Street, Luton.

General Secretary and Treasurer:

Mr. J. H. SCOTT, 121, Hitchin Road, Luton.

Assistant Secretary:

Mr. W. PEASE, 269, Upper Hitchin Road, Luton.

COUNTY MATCHES, 1912-13.

Southern Counties Championship.

v. Hertfordshire, at Hitchin.—Result: Herts, 3; Beds, 1. Beds team: R. H. Abbott (Luton), J. R. Elvey (Clarence), A. Webdale (Amateurs), T. W. Saunders (Arlesey), F. Rainbow (Biggleswade), B. Rayment (Clarence), E. Rogers (Clarence), P. Chapman (Bedford), J. Chamberlain (Potton), B. Pettengell (Luton Albion), and J. Chapman (Bedford).

v. Oxfordshire, at Oxford.—Result: Beds, 1; Oxon, 1. Beds team: H. V. Bateman (Dunstable), J. R. Elvey, W. G. Toyer (Clarence), B. Parris (Harrold), F. Rainbow, T. W. Saunders, E. Rogers, T. King (Arlesey), P. Lovell (Clarence), B. Pettengell, and C. Crawley (Biggleswade).

v. Berks and Bucks, at Luton.—Result: Beds, 3; Berks and Bucks, 0. Beds team: H. V. Bateman, J. R. Elvey, W. G. Toyer, H. S. Parsons (Clarence), F. Rainbow, B. Rayment, T. Llewellyn (Commercial Cars), V. Hawkes (Crusaders), P. Lovell, W. Barton (Crusaders), and J. Conquest (Clarence).

County Junior Cup.

1911-12. LUTON TRINITY (3) beat POTTON TOWN (1) at Shefford after a drawn game (0—0) at Bedford.

1912-13. POTTON TOWN (3) beat DUNSTABLE BAGSHAW'S (0) at Bedford.

English Cup Draw.

Extra Preliminary Round, Sept. 13th.—Luton Trinity v. Harpenden Town.

Preliminary Round, Sept. 27th.—Luton Clarence v. Tuffnell Spartan, Luton Trinity or Harpenden v. Barnet and Alston Athletic, Luton Reliance v. Luton Crusaders, Luton Amateurs v. Ashley or Watford Orient.

"Shirts of Comfort"

is the well-won title of the

Blundell Flannel Shirt.

The new Art Shades in self colours, and cream grounds with single color stripes are the special feature this season.

Selling at 3/11 to 7/11

Our "SPECIALITY," for which we anticipate a big run is an

All-Wool Taffeta Cloth,

in very smart stripes, at 7/11

The fit of our
COLLARS,
and the choice
variety of our
— **TIES** —
present an
unequalled
combination.




GET THEM AT —

BLUNDELL BROS.

(Luton), Ltd.,

OUTFITTING DEPARTMENT,

— 12, Cheapside, LUTON.

F  **Football Outfits!**



M. MARES'

Special Department for

Ask for the
Football List.

Special terms
for Clubs.

Football
Clothing

++*+*+*+*+*+*

8 & 10, George Street,

AND

187, Dunstable Road,

LUTON.