

"THE LUTON NEWS"

PRICE

2d.

Football Handbook



1919-20.

'Ryto' (Saves You Pounds.)

For ALL THE WORLD'S BEST

— CYCLES —

OPEN and CLOSED

MOTOR CARS

FOR HIRE.

Phone 59.

— — —

21a, New Bedford Road.

Garages: Biscot Road.

Cheapest House Furnishers

in the District.



Tele. 41.

J. WEBDALE & SONS

LTD.,

Wellington Street,

LUTON.

The New Venture.

NATIONAL sport has proved an essential in the moulding of manly character. It is impossible to estimate its full share in the elements of the victory which, after all, was gained on the battle-fields of France. Chaos in some degree is an inevitable aftermath of war, and every country which participated in the world struggle is learning that truth by bitter experience. May it not be that national sport will help to allay national trouble, just as it assisted to restore international peace?

We believe this is more than possible, and, as football has a first claim on national popularity, its resumption in the fullest sense of the term may nullify much of the dissatisfaction and discontent the country is suffering to-day.

Luton, in common with many other provincial centres, finds the renewal something of a venture. With the exception of a part of season 1915-16, and season 1916-17, there has been no competitive football of the highest class. The past four years have been an anxious period in the history of the club, but something always turned up, and while the quality of the sport has not reached that of pre-war days, it has often been interesting, and always welcome. The Club has required a considerable amount of reconstruction, and the directors have done their best to ensure that Luton shall launch out once more with a team capable of holding its own among its compeers. They have obtained players who, but for the abolition of the transfer system between clubs of the Southern and the English Leagues, would have cost a tremendous sum of money.

CLUB OFFICIALS.

Directors:

H. ARNOLD, Esq., J.P., (Chairman),
Messrs. W. J. ALLEN, P. A. EDWARDS, E. GIBBS,
E. MOUSE, H. SMART, W. SOPER, J. SQUIRES,
G. E. M. WALKER.

Secretary:

CHAS. GREEN, 73, Hazelbury Crescent, Luton.

*Luton and
District
Branch.*



*Ivy Leaf
Club,
Park St.*

Sports and Entertainments Section.

FOOTBALL CRICKET
ATHLETICS
BILLIARDS CHESS
INDOOR GAMES
D.S. & S. CONCERT PARTY

*All Ex-Service Men heartily invited
to Join this Organisation.*

*All particulars from—
Ivy Leaf Club, Park Street, Luton.*

FIVE SEASONS.

Season 1914-15 saw the Town Club resuming its place in the First Division of the Southern League, after two seasons in the minor company of the Second Division. They proved their title to be in the grand circle, for they finished the season in the fourteenth position, their record being:

Goals.						
P.	W.	L.	D.	F.	A.	Pts.
38	13	17	8	61	73	34

The following season the Southern League was discontinued, and for the first portion the Town only played friendly games. In the second half, however, they were elected to the London Combination, and finished with the following record:

Goals.						
P.	W.	L.	D.	F.	A.	Pts.
14	4	9	1	31	44	9

In friendly games their record was:

Goals.						
P.	W.	L.	D.	F.	A.	Pts.
22	18	3	1	108	27	

They again secured admission to the Combination in 1916-17, their position being eighth and their record:

Goals.						
P.	W.	L.	D.	F.	A.	Pts.
39	20	16	3	101	82	43

The Club had the honour of providing not merely the record goal scorer of the season, but the record goal scorer of football history, Simms netting 40 goals and just beating Davis, of Millwall, for the honour.

At the end of that season the London clubs restricted the Combination to clubs within the Metropolitan area, a decision which caused much heart burning. Mr. Green, however, managed to arrange friendlies, and so the Club carried on. A similar state of affairs was experienced last season, but it is satisfactory to know that the flag was kept flying, and although there has been considerable loss, it is hoped that the forthcoming season will see that state of affairs remedied and the Club placed on the high road to prosperity.

Of the Town's signed players when war broke out, the following joined the Colours: Ernest J. Dodd (amateur),

Footwear

FOR ALL
OCCASIONS.

Football Boots

Best Value in
the World.

A splendid
assortment
of Hard
wearing and
dependable
lines are
displayed at



**FREEMAN,
HARDY & WILLIS,**

Ltd.,

Our stocks are most extensive, and are positively

**Unequalled for
Variety and Quality.**

WE INVITE INSPECTION.

Local Address :

38, GEORGE STREET, LUTON.

killed in action; Sgt. Arthur H. Wileman, M.M., killed in action; Frank Gilder (amateur), killed in action; Ernest Simms (wounded), Frank Lindley (wounded), W. Heath (wounded), Arthur Roe (wounded), Sid Hoar (gassed), John Dunn, T. T. Wilson, R. W. Frith, F. Hawkes, J. Brandham, H. P. Roberts.

Of old players it is known that J. Jarvie and Geo. Porter were killed.

The Town have retained practically all the old players they wished. Mitchell and Frith have signed for South Shields; Heath for Stockport County; and Chipperfield for the 'Spurs.

Among famous players who assisted the Town in friendly games during war time were J. T. Brownlie (Third Lanark and Scottish International goalkeeper); R. Mercer (Hearts of Midlothian and Scottish International centre half-back); A. Robbins (Castleford Town and champion sprint runner); S. Hartnell (Sunderland, afterwards killed in action); and W. Jones (Brighton and Hove Albion).

PETER STEWART, Left Half-back.

An understudy who has come on apace since he was a prisoner of war in Germany is Peter Stewart. He was born at Falkirk 23 years ago come October, stands 5ft. 10in. in height, and scales just over 150lb. He learned most of his football with Davis Athletic, and his play now does not appear to have suffered from his share in the Great Adventure.

WILLIAM S. FURR (Outside Left).

A native of Letchworth, William S. Furr arrives at Luton by way of Hitchin Town, Leicester Fosse, and the Army. He is 25, 5ft. 6in. in height, and weighs 10st. Ten years ago he did so well for Hitchin Town that the Fosse signed him on in 1912-13. He has several medals for junior football, and has a Fosse medal for winning the Coalville Charity Cup. During the war he assisted the Town on several occasions, and that was the reason Mr. Green signed him on. He should prove a very useful man.

HARRY PARSONS,

— AT —

Your Service.

Whether you
are in need of

Football

OR

Sports

Attire

OR

Everyday

Wearing

Apparel,

you are sure of

**PERSONAL
SERVICE**

and

Best Value

by calling at

18, Manchester Street, Luton.



Suits to Measure a Speciality.

Men who have played for Luton

Since it adopted Professionalism.

1891-2. J. Burley; Sanders, Hoy; Wright, Paul, Taylor, E. H. Lomax; F. K. Whitby, Deacon, C. Lomax, Ocle, H. Whitby, Cheshier.

1892-3. Burley, T. Read; Sanders, Hoy, George, Wilson; Wright, Julian, Taylor, Watkins; Brown, Cheshier, Allen, H. and F. Whitby, Barbour, Galbraith, J. McKenzie, Kirk.

1893-4. Bee; Cheshier, Wilson, C. Reed; Watkins, Julian, Taylor; H. Whitby, Allen, Galbraith, Finlayson, Vickers, J. Dimmock, Brown, Hayes.

1894-5. Bee; Cheshier, M. D. Nicholson, McEwen, Watkins, McCrindle, Howe, Collins; Brown, Gallacher, Galbraith, Prentice, Allen, Dimmock, Jack.

1895-6. Jack Russell, Williams; Stirton, M. D. Nicholson, McCartney, McEwen; Watkins, Stewart, Docherty; Gallacher, Finlayson, Galbraith, Parkinson, Birch, Ekins, Coupar, Dimmock.

1896-7. Williams; Davies, McCartney, McEwen; Perrins, Stewart, Docherty, Watkins; Gallacher, Finlayson, McInnes, Galbraith, Birch, Coupar, Ekins, Dimmock, Brown.

1897-8. Williams; McCartney, McEwen; Davies, Stewart, Docherty, Perrins; Gallacher, Coupar, Birch, Clarke, Donaldson, Little, McInnes, Ekins, Durrant.

1898-9. Perkins; H. Williams, Moore, Dow; C. Ford, Clark, Sharp, Crump; Durrant, Hewitt, W. Ford, Kemplay, Draper, McInnes, Brock, Ekins.

1899-1900. Daw; Dow, McCurdy; Morrison, Stewart, Brown, Williams, Rally; Inglis, Brock, Fairgrieve, Draper, McInnes, Eckford.

1900-1. Monks, Ord; Lindsay, McCurdy; Clifford, Holdstock, Williams, Cox; Brown, Blessington, Molyneux, Burbage, Dempsey, Tierney, Saxton, Durrant.

1901-2. Ord; Lindsay, Sharp, Street; F. Hawkes, White, Williams, R. Hawkes; Durrant, Blessington, Brown, Barker, Tierney, Colvin.

1902-3. Frail; Lindsay, Sharp, Hood; F. Hawkes, White, Williams, R. Hawkes; Durrant, Blessington, Hilsdon, Moody, Davidson, Gall, Allsopp.

1903-4. Thompson; Bennett, McEwen; F. Hawkes, White, R. Hawkes, Williams; Durrant, Eaton, McKee, Storey, Moody, Allsopp, Griffiths, Madden.

J. T. JEFFS & SONS

FOR

**RINGS,
WATCHES**

**AND JEWELLERY OF
EVERY DESCRIPTION.**

Many New and Interesting Designs.

**41, WELLINGTON ST., and
15, MANCHESTER ST., :: LUTON.**

ESTABLISHED 1872.

'PHONE 533.

1904-5. Lindsay; Turner, McEwen, J. Dow; F. Hawkes, White, R. Hawkes, Pritchard, Williams; Eaton, Ross, Lamberton, Penman, Moody, Wallace, Barnes.

1905-6. Platt; Blackett, McCurdy, J. Dow, Else, Watkins; F. Hawkes, White, R. Hawkes, Gallacher; Warner, Macdonald, Brown, E. Dobson, Pickering, Barnes, Latheron.

1906-7. Platt; Hogg, Jackson, McCurdy; F. Hawkes, White, R. Hawkes, Jones, Gallacher; Warner, Schofield, Macdonald, Brown, Murphy, E. Dobson, Gittins, Pickering, Barnes, Fitzpatrick, Latheron.

1907-8. Platt, Jarvis; Hogg, Nicholson, Dimmock, McCurdy; F. Hawkes, Jones, White, R. Hawkes; Rankin, Walders, Rigate, Hall, Brown, Pearson, Farrant, Moody, Latheron.

1908-9. Platt, Jarvis; Dimmock, McCurdy, Gregory, Chapman; F. Hawkes, Jones, R. M. Hawkes, White; Brown, Rigate, Haycock, Menzies, Bradley, Stansfield, Moody, Johnson.

1909-10. Jarvis, Fry; Hedley, McCurdy, Chapman, Rayner, Ruffett, Potts; F. Hawkes, Jones, R. M. Hawkes, Slennett, Trueman; Brown, Quinn, Smith, Moody, Stansfield, Johnson, Divine, Moore, Porter, Schofield.

1910-11. Naisby, Jarvis; Wightman, Chapman, Potts, Webb, J. Ashton, C. Watson; F. Hawkes, Bushell, R. M. Hawkes, Johnson; Brown, Quinn, Walker, Smith, Stephenson, Moody, Lashbrooke, Stansfield.

1911-12. Naisby; Wightman, Potts, Ashton, A. Brown; F. Hawkes, Bushell, R. M. Hawkes; Brown, Walker, Stephenson, Moody, Stansfield, Johnson, Shepherd, Walden, Lashbrooke, Streeton.

1912-13. J. W. Day, R. Abbott, H. Bateman; C. G. Henderson, E. J. Potts, J. Jarvie; F. Hawkes, S. Thompson, T. T. Wilson, R. M. Hawkes; J. Stephenson, A. H. Wileman, W. Smith, J. Murphy, B. Holland, T. Streeton, A. Worth.

1913-14. J. T. Mitchell, R. Abbott; J. R. Elvey, J. Robinson, J. Jarvie; F. Hawkes, R. W. Frith, R. M. Hawkes, T. T. Wilson; M. Donaghy, E. Stevens, A. F. Durrant, A. H. Wileman, E. Simms, R. Brewis, F. Rollinson, J. Wilkie, S. Hoar.

1914-15. J. T. Mitchell, R. Abbott; J. R. Elvey, J. Dunn, J. Robinson, E. J. Potts; F. Hawkes, R. W. Frith, R. M. Hawkes, T. T. Wilson, E. G. Needham, J. Brandham; H. P. Roberts, R. N. Macfarlane, A. H. Wileman, A. Roe, E. Simms, W. Heath, F. Rollinson, J. Chipperfield, F. Lindley, S. Hoar.

F. L. HARWOOD.

—NOVELS.—

The Largest Selection in the town by
all the Leading Authors, including:
NAT. GOULD, ETHEL DELL,
KATHLYN RHODES, RIDER
HAGGARD, &c., &c.

CREST CHINA.

A New and Large Stock just received.

PHOTO FRAMES, PURSES,
WALLETS, TREASURY NOTE
CASES, PRAYER AND HYMN
BOOKS, AUTOGRAPH BOOKS,
&c., &c.

STATIONERY COMPENDIUMS,
PADS, ENVELOPES, PICTURE
POSTCARDS (Local Views, Humour-
ous and Birthday), TOBACCO,
CIGARETTES AND CIGARS; all
the Leading Brands in Stock at

173, DUNSTABLE ROAD
(Corner of Kenilworth Road).



PETER STEWART.



WILLIAM S. FURR.

(See page 5).

Still Leading

**FOSTER BROS.,
Clothing Co., Ltd.**

**Men's Wear
Specialists**

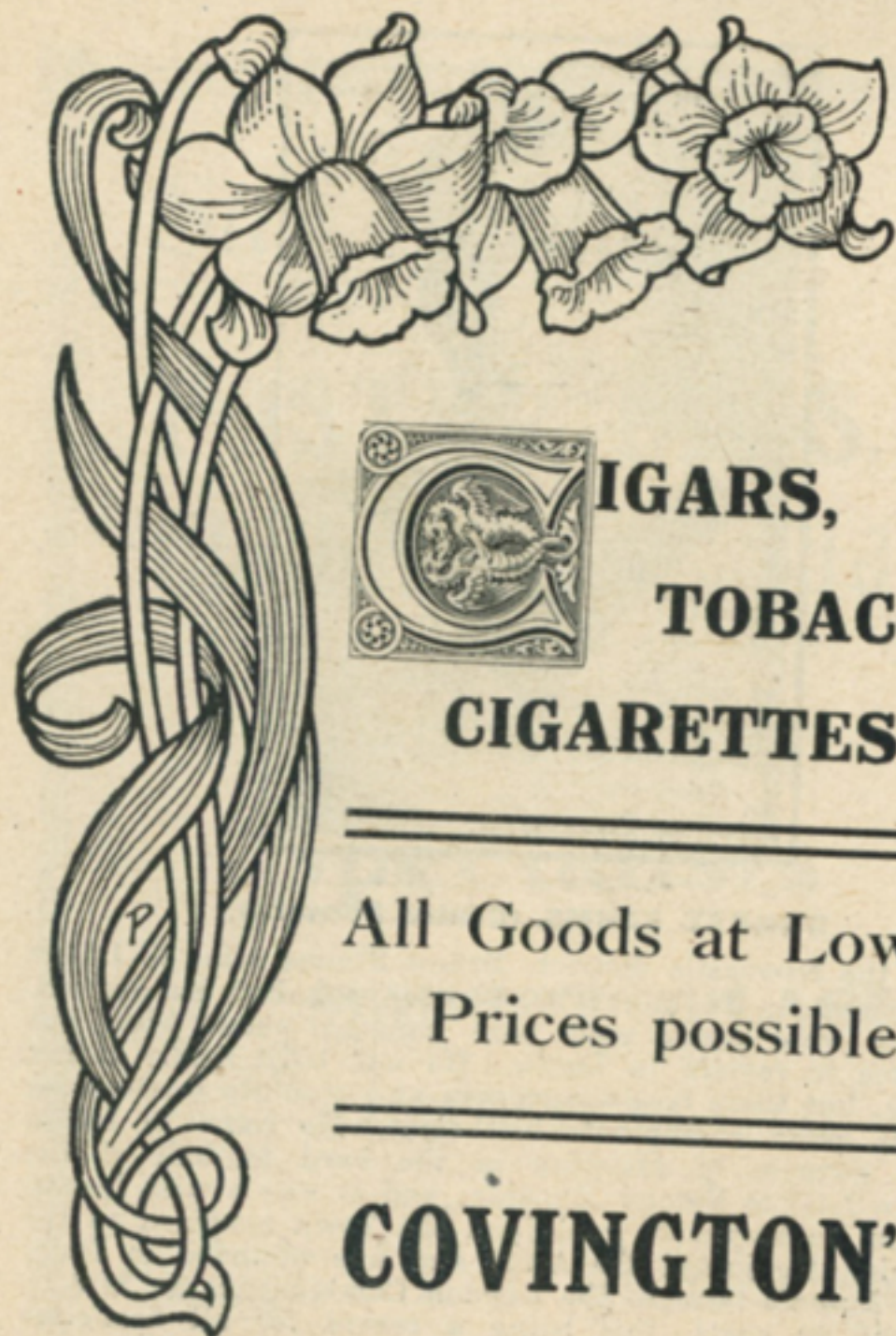
**22, MARKET PLACE,
LUTON.**

Manager : T. E. HUTCHINSON.



ERNEST SIMMS (Centre Forward).

From the Newcastle district, Ernest Simms came to Luton via Barnsley. He might have gone back had he desired, for there were many gold bags hanging about him, but he prefers to remain in Luton. He was built firmly rather than big, but there is a doggedness and absolute fearlessness which is every champion's birthright. He came to Luton for the purpose of assisting in the hard football of the Southern League Second Division, and it was a wise investment, for he scored 37 goals and the Town returned to the old circle. He joined the Army and was wounded in Italy. During Luton's term in the London Combination, in 1916-17, he scored 40 goals, this being a record for all first-class football in any season. He hopes to repeat that feat, or go one better. Ernest is 26, 5ft. 9in. in height, and weighs 150lb.



**IGARS,
TOBACCO,
CIGARETTES.**

**All Goods at Lowest
Prices possible.**

COVINGTON'S,

CHEAPSIDE, ————— LUTON.



WM. J. GRIMES (Outside Right).

The capture of Grimes by Mr. Green afforded a good deal of satisfaction locally. It is owing to the abolition of the transfer system that he figures in the Town's colours. He admits to 30 years, but they have not shorn him of his youthful appearance. He went from Hitchin Town to Watford; at the end of one season he went to Glossop; after a season there, donned Bradford City's colours and helped to win the championship of the Second Division of the English League. Two seasons later he went to Derby County, with whom he has been for five seasons. He has two medals for Second Division championships. He scales 150lb. and stands 5ft. 7in.

* * * * *

HALLETT'S COMMERCIAL HOTEL

(Proprietor:—F. A. HALLETT),

Formerly the 'THRIFT'

:: DINING ROOMS, ::

STUART STREET, LUTON.



DINNERS AND TEAS

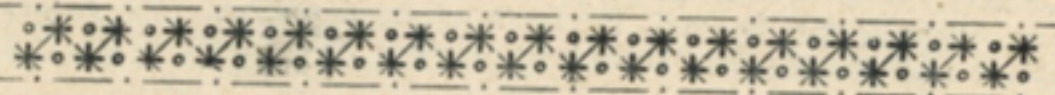
:: A SPECIALITY. ::



FOOTBALL PARTIES CATERED FOR.

VERY MODERATE TERMS.

GOOD ACCOMODATION FOR CYCLISTS.



ARTHUR ROE (Inside Right).

Signed in the season when war broke out, Arthur Roe was just working himself into popularity when the call to war sounded, and he joined up and served in France for over two years. Arthur is 23, 5ft. 9in., and 11st. He was coming out as a centre-forward, but later developed into a troublesome inside left, his trickiness and thrustfulness matching well with that of Simms and Wileman. He is a native of South Normanton, Derbyshire, learned his football with Blackwell Colliery and South Normanton, and was secured from the latter club by Mr. Green, who has reason to be proud of his decision. Since his demobilisation in January he has played for Bolsover, North Derbyshire, and his team won the whole of the competitions in which they entered last season; thus Arthur has added four medals to his bric-a-brac.

LANGLEY GARAGE

Castle Street, Luton.

Everything for the Motorist.

Repairs and Overhauls.

Tyres and Tubes.

Full Range of Accessories.

Benzol and Petrol.

Cars for Hire.

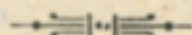
Haulage Contracts.

Tyre Press.

28 Seater Char-a-bancs.

Lock-up Garages.

The whole heated throughout and well lighted.



OPEN NIGHT AND DAY.

Proprietor:

B. E. Barrett.

Telephone 846.



DAVID WILLIAMS (Inside Left).

A Liverpoolian, David Williams is well known in many counties, although he is only 26. From St. Helens Recreation he went to Glossop. This is a happy hunting ground for many clubs, and so Notts County baited for and got him. The high opinion he won there as a dashing centre forward was rapidly bringing him into the limelight, but an injury to the knee laid him aside for a time. He was operated upon, and then went to Belfast to play for the Celtic in 1914-15, when that club won the Irish League. Then he joined up, and played for The Arsenal in the London Combination before going to France. There he became a member of the B.E.F. team, which was brought back to England to play for the country.

Luton.



Branch.

5, Upper George Street.

SPORTS SECTION.

FOOTBALL, CRICKET,
RIFLE SHOOTING,
BILLIARDS, ATHLETICS,
INDOOR GAMES.

Every Ex-Service Man is invited to join the above Organization. No matter what your taste in sport, the Comrades cater for it.

Hon. Sports Sec., **COLIN C. DANIELS.**



ARTHUR BURCHELL (Centre Forward).

This discovery of war time comes from Leighton Buzzard, where he was winning praise soon after he left school. He was with Leighton Town in 1911-12, and the next season at Linslade, then returned to the Town in the following season. When Bullivant and Morgan's raised a club in 1917-18 he played for them, and it was his work in the Luton and District Works League that brought him to the notice of Luton Town. He has mementoes of Leighton's successes in his first and third season with them, and also a runners-up medal for the Works League. He is out for higher honours now, and as he is only 22, and is a compactly built young man of 5ft. 9½in., scaling 11st. 9lb., his prospects are distinctly bright.

THE . . .
**COUNTY BUSINESS
TRANSFER AGENCY**

(W. L. HAWKINS, Proprietor),

BUSINESS AGENTS AND
INSURANCE : BROKERS,

**25, CHEAPSIDE, LUTON,
and at Branches.**

ALL KINDS OF
BUSINESSES
DISPOSED OF
PROMPTLY

ESTABLISHED
25 YEARS IN
BEDS, HERTS
AND BUCKS



JOHN RUTHERFORD (Centre Half-back).

Is also a native of Ashington, and learned his football when with the Northern Alliance. He came under the notice of Tottenham Hotspur in season 1913, and was on their books until Luton Town captured him. He served three years in France with the R.F.A., and there met and was chums with Sid Hoar. He is a bigger fellow than Frith, for he is an inch over 6ft. in height, and weighs close on 170lb., and is two years the senior of his brother. He is clever with head and feet, and it is odds on him when the ball is receiving plenty of boot.

DICKINSON & ADAMS,

*MOTOR AND
GENERAL ENGINEERS.*

Works and Garages:

New Bedford Road,
Telephone 509.

High Town Road,
Telephone 476.

If you are wanting your machine overhauled, now is the time; we can give you prompt attention. We have the largest stock of spare parts and the best machine shop for turning out special parts in the district. Consult us if you want a new Car or Motor Cycle. We can give you best delivery.

OPEN and CLOSED CARS for HIRE
BY THE HOUR, DAY,
WEEK OR CONTRACT.



OSCAR NEALE,

A stocky outside left from Derbyshire, is 24, stands 5ft. 8in., and weighs 11st. He played for New Whittington before joining the Army, and since demobilisation he has played for Sheepbridge Ironworks, a smart local team.

W. F. BOOTES

Watchmaker, Jeweller,
and Silversmith. :: ::

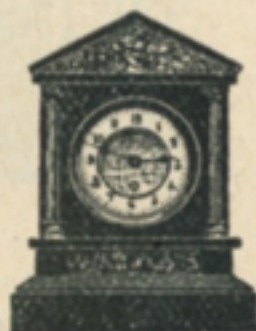


The Shop for Lucky Wedding and
Engagement Rings in 9, 18 and 22
carat Gold. All sizes kept in stock

THE CELEBRATED
WALTHAM WATCHES

AT ALL PRICES,

In Gold, Silver and Gold Filled.
Five Years' Warranty Given.



15, Guildford Street, LUTON.



THOMAS URWIN (Right Half-back).

This energetic little fellow won golden opinions when he played for the Town in their London Combination games in 1916, and his location in peace time football has been a matter of speculation ever since among Town enthusiasts. He was born at Scotswood, Newcastle, and his ability was recognised by the keen critics of Newburn's club. While with them he came under the notice of Sheffield United, and was with them for two seasons before war broke out. It was while stationed at Hemel Hempstead that he was able to assist Luton in the Combination, after which he went to France and had an address there for 21 months. The Germans sent over a gas message, which discovered him and caused his return to Newcastle. He was no longer fit for the Army, and he got back to work, and assisted Scotswood in the Victory League. Several clubs were angling for him, but Mr. Green secured the all-important signature. He says he is 26, 5ft. 6in., and weighs 11½st.

IF YOU SHOULD CATCH COLD
:: WATCHING THE MATCH ::

ONE BOTTLE OF
DR. BROWNE'S
Influenza Mixture

WILL PUT YOU RIGHT.

Per **1/1½** Bottle.

FORTIFY YOURSELF AGAINST
ALL WEATHERS BY TAKING

"FOSFO"

The Tonic that Invigorates
and Strengthens . . .

Per **1/-** and **1/9** Bottle.

H. E. COCKER, M.P.S.,
Pharmaceutical Chemist.
KENILWORTH PHARMACY,
DUNSTABLE ROAD, LUTON
(Corner of Kenilworth Road.)



PERCY SUMMERS (Goalkeeper).

The new goalkeeper has not the height of Mitchell, but he bids fair to become quite as great a favourite, for he is not only a clever custodian, but has a genial presence. He is 25 years of age, stands 5ft. 8½in., and scales 12st. He is a native of Sheffield, and his work for local clubs brought him to the notice of Chesterfield. They signed him, and for four seasons he remained with them, Grimsby subsequently securing him. Here he clinched his reputation, and then joined the Footballers' Battalion, and went to France. He was gassed in 1916, and was discharged from the Army in 1917. His war time service has been spent between the "sticks" for Sheffield Wednesday, and more clubs than those of Sheffield were disappointed when he decided to accept Luton's terms.

Players or Spectators

CAN BE FITTED UP FOR SEASON 1919-20
IN A STYLE WHICH GUARANTEES
SATISFACTION.



Jerseys, Shirts
and Knickers,
Football Stockings,
&c.
Rainproof Coats,
Overcoats and
Mackintoshes,
Smart Tailor-made
Winter Suits.

HARRY INWOOD,

The Smart Tailor and Outfitter,
CHAPEL STREET & STUART STREET, Luton.
'Phone 854.



ROBERT TOMLINSON (Inside Right).

Born at Bootle, Robert Tomlinson has had excellent experience of good-class Lancashire football, and played with Tranmere Rovers before the war. Then he was requested to assist Rochdale in war time football, in the Lancashire Section of the English League. Rochdale did very well in that company, and Tomlinson was a star artiste for them. In the last two seasons he has been their top scorer, obtaining 26 and 24 goals in the respective seasons. He is 26, height 5ft. 8in., weight 11st. 6lb.

Luton Town F.C. First XI. Fixtures, 1919-20.

1919			1920		
Date	Opponents	Goals	Date	Opponents	Goals
		FOR AG'ST			FOR AG'ST
Aug. 30.	Swansea (S.L.)	H	Jan. 3.	Swansea (S.L.)	A
Sept. 1.	Gillingham (S.L.)	H	" 10.	English Cup.	
" 6.	Exeter City (S.L.)	A	" 17.	Exeter City (S.L.)	H
" 10.	Gillingham (S.L.)	A	" 24.	Cardiff City (S.L.)	A
" 13.	Cardiff City (S.L.)	H	" 31.	Queen's Park Rangers (S.L.)	H
" 17.	Merthyr Town (S.L.)	H	Feb. 7.	Swindon (S.L.)	A
" 20.	Queen's Park Rangers (S.L.)	A	" 14.	Millwall (S.L.)	H
" 27.	Swindon (S.L.)	H	" 21.	Brighton and Hove (S.L.)	A
Oct. 4.	Millwall (S.L.)	A	" 28.	Newport County (S.L.)	H
" 11.	Brighton and Hove (S.L.)	H	Mar. 6.	Portsmouth (S.L.)	A
" 18.	Newport County (S.L.)	A	" 13.	Northampton (S.L.)	H
" 20.	Mid Rhondda (F.)	A	" 20.	Crystal Palace (S.L.)	A
" 25.	Portsmouth (S.L.)	H	" 27.	Southend (S.L.)	H
Nov. 1.	Northampton (S.L.)	A	April 2.	(Good Friday) Watford (S.L.)	A
" 8.	Crystal Palace (S.L.)	H	" 3.	Norwich City (S.L.)	A
" 15.	Southend (S.L.)	A	" 5.	(Easter Monday) Watford (S.L.)	H
" 22.	Norwich City (S.L.)	H	" 6.	Bristol Rovers (S.L.)	A
" 29.	Brentford (S.L.)	A	" 10.	Brentford (S.L.)	H
Dec. 6.			" 17.	Merthyr Town (S.L.)	A
" 13.	Plymouth (S.L.)	A	" 24.	Plymouth (S.L.)	H
" 20.	English Cup		" 28.	Bristol Rovers (S.L.)	H
" 25.	(Xmas Day) Southampton (S.L.)	H	May 1.	Reading (S.L.)	H
" 26.	(Boxing Day) Southampton (S.L.)	A			
" 27.	Reading (S.L.)	A			

S.L.—Southern League.
English Cup.—F.A. Cup. F.—Friendly.

The PAPERS
FOR BEST
FOOTBALL
REPORTS.

THE **LUTON NEWS**
THE **SATURDAY TELEGRAPH**
THE **TUESDAY TELEGRAPH**

The PAPERS
THAT BRING
BUSINESS TO
ADVERTISERS.

For
Rainy
Days.



For
Summer
Evenings

"His Master's Voice"

GRAMOPHONE.

The Instrument that brings the world's greatest artistes to your home.

COMPLETE STOCK of "His Master's Voice" Records kept.

S. FARMER & Co.,
2, WELLINGTON ST., and 85, GEORGE ST.,
LUTON.

Branch: 3, WEST STREET, DUNSTABLE.

'Phones: 636 LUTON.

37 DUNSTABLE.

PIANOLA PIANO SPECIALISTS.



JAMES RUTHERFORD (Right Full-back).

A product of the useful nursery of Newcastle-on-Tyne district, the full-back is of stockier build than his brother John. He is 22, 5ft. 9in. in height, and weighs 11½st. His previous clubs were Ashington and Bedlington, of the Northern Alliance, and he was making a name when quite young. He was brought to Luton for a trial by his brother, and he fully justified the confidence of John and other friends who gave him recommendation.

OLA UNDERCLOTHING Co

for

Autumn and Winter Wear.

SPECIALISTS

in

CREPE-DE-CHENE

and

SILK BLOUSES;

also

LINGERIE & HOSIERY.

30, Upper George Street,

CORNER OF
LANCRETS PATH,

LUTON.



FREDK. J. HENSMAN.

This Luton lad is pretty well known to Town followers. He is 26, height 5ft. 9½in., and weighs 11st. 8lb. Ten years ago he started with Luton Trinity, and at the end of his first season went to the Reliance. After two seasons with them he was given a trial with the Town Reserves, and remained on the Town's books until 1914. He has seen a good deal of football while in the Army, and to the medal he won with the Reliance, as runners-up in the Beds Cup, he added two gold medals as a member of the team which won the Felixstowe Garrison Cup, one as runners-up of the Harwich and Parkeston Charity Cup, and four inter-company regimental medals. He hopes to prove this season that his experience in Army football has adapted him for the select company of Southern League football.



LUTON'S
Premier Tailor

(Over 40 years in Wellington St.)

**GIVE HIM A TRIAL.
SATISFACTION ASSURED.**

FAIR PLAY
BEST VALUE **Always.**

**Luton's
Fashion
Centre
For
Men.**



W. LACEY & SON,
CITY TAILORS & OUTFITTERS,
**14, WELLINGTON STREET,
LUTON.**



GEORGE BOWLER (Right Half-back).

This hefty newcomer first saw the light and learned his football in the same hard school as the late Arthur Wileman, the Newhall and Gresley villages, near Burton-on-Trent. George Bowler was playing for Gresley Rovers in 1910, when Derby County coveted him, and he went to the "Rams" in 1911. In 1913 he was transferred to Tottenham Hotspur, and was still on the 'Spurs' books when he went out to France with the Footballers' Battalion in 1915. He has played with the 'Spurs' since his demobilisation. With English League experience, First and Second Divisions, with Derby County, and First Division with the 'Spurs, and London Combination knowledge, he should prove a valuable acquisition to Luton. He is 28, stands 5ft. 9½in., and scales 12st.

W. BELL,
THE Tailor,
1889.

W. BELL,
THE Tailor,
1919.

"NUFF SED."

'Phone
403.

Chapel Street,
Luton.



JOHN DUNN (Left Full-back).

A daring, resolute back, John Dunn's return to Luton is something of a surprise, for he has been playing for Everton during war time, although last season he was with Blackpool. He was with Luton only during the 1914-15 season, the war being the cause of his removal therefrom. He was released from the Army for more important work, and returned to the Liverpool district. He is as big as ever, but carries no superfluous flesh. He was talked about in Lancashire through his play and captaincy of Eccles Borough in 1912-13, when they won the premier championship of the Lancashire Combination. Thence he was called to a higher sphere of service—Leeds City. After a season with them he was transferred to Luton. Fearless and courageous, he is not averse from playing man or ball, or both, as occasion demands. He is now 26, stands 5ft. 10½in. in his socks, and can make 12½st. weights rise in the scale.

Luton &
District
Branch.



Ivy Leaf
Club.
Park St.

Over 680 Branches.

Members Exceed 1,000,000

EVERY
**Discharged or
Demobilised**
MAN AND WOMAN
Should Join the Federation

Don't Delay. Join To-day.
Branches all over the World.

*All ex-officers are eligible
— for Membership. —*


'Phone 822.

Sec. : H. C. COOPER.



E. H. SEYMOUR (Outside Right).

Luton's new outside right, Edward Hugh Seymour, has a distinction which only thirteen other players in the world can claim. He is the proud possessor of the gold watch presented by the Irish Football Association, Ltd., to the 14 players who won the International Championship in season 1913-14. He is a native of Dublin, and first came into prominence with the Bohemians, and it was then he was in the Irish Championship eleven. From the Bohemians he entered the ranks of the professionals, joining Cardiff City, but the war brought about his return to Ireland. For four years he has figured prominently in Belfast football. He played with Linfield for a season, and then for Glentoran, the club which captured the whole of the six principal trophies of Ireland in season 1916-17. He is tricky and fast and hard to shake off the ball. He is a few pounds lighter than he was last season, weighing about 150lb., height 5ft. 9in., and is 28.

The 
Well-Known
For . . .

CLOCK HOUSE

Tele. 21 x 5.

**F
O
O
T
B
A
L
L**

BOOTS.



Agents for the Well-known "CERT BRAND."

PUBLIC BENEFIT BOOT Co.,

Also
ST. ALBANS. Park Square, Luton.



THOMAS PARKER (Centre Half-back).

Secured a fortnight before the opening of the season, he was with Bolsover Colliery when recommended to Mr. Green by one of the latter's football friends, and there was competition between Huddersfield and Luton for possession. He appended his signature to the contract offered by Mr. Green. He was signed by Sheffield Wednesday in 1914, but, being a Territorial, he was called to khaki, and has done nearly five years' soldiering. He prefers the pivotal position, but is really at home anywhere in the middle line. A sturdy tackler, speedy, and a good shot, Sheffield Wednesday had good reason for wishing to retain him. He is 25, 5ft. 9in., and weighs 160lb.

E. STRANGE & SONS, THE DRESS HOUSE.



Our Dress Department is always well stocked with the latest materials at the lowest possible prices.

E. Strange & Sons
THE DRESS HOUSE

34, 36, 38, 40, 42, 44,
WELLINGTON STREET.

Luton Town F.C. Reserve Fixtures, 1919-20.

Goals—For Agst.

Sept. 6.	Watford (S.E.L.)	H
" 8.	Southampton (S.E.L.)	A
" 13.	Watford (S.E.L.)	A
" 20.	Brighton and Hove (S.E.L.)	H
" 24.	Reading (S.E.L.)	H
" 27.	Southend (S.E.L.)	A
Oct. 4.	Portsmouth (S.E.L.)	H
" 11.	Brighton and Hove (S.E.L.)	A
" 18.	Southend (S.E.L.)	H
" 25.	Portsmouth (S.E.L.)	A
" 29.	Reading (S.E.L.)	A
Nov. 1.	Tottenham Hotspur (F.)	H
" 8.		
" 15.	Southend (S.E.L.)	H
" 22.	Tottenham Hotspur (F.)	A
" 29.	Brentford (F.)	H
Dec. 6.	Clapton Orient (F.)	A
" 13.	Thornycroft (S.E.L.)	H
" 20.	Thornycroft (S.E.L.)	A
" 25.	(Xmas Day) Reading (S.E.L.)	A
" 26.	(Boxing Day) Reading (S.E.L.)	H
" 27.	Southampton (S.E.L.)	H
Jan. 3.	Thornycroft (S.E.L.)	H
" 10.	Thornycroft (S.E.L.)	A
" 17.		
" 24.	Fulham (F.)	H
" 31.		
Feb. 7.		
" 14.	Portsmouth (S.E.L.)	A
" 21.	Brighton and Hove (S.E.L.)	H
" 28.	Fulham (F.)	A
Mar. 6.	Portsmouth (S.E.L.)	H
" 13.		
" 20.	Clapton Orient (F.)	H
" 27.	Southend (S.E.L.)	A
April 2.	(Good Friday) Watford (S.E.L.)	H
" 3.		
" 5.	(Easter Monday) Watford (S.E.L.)	A
" 6.	Southampton (S.E.L.)	H
" 10.	Brighton (S.E.L.)	A
" 17.		
" 24.		
May 1.	Southampton (S.E.L.)	A
	S.E.L.—South Eastern League.	
	F.—Friendlies.	

Headquarters of
LUTON FOOTBALL SUPPORTERS' CLUB,
LUTON & DISTRICT FOOTBALL LEAGUE
AND ALL OTHER
Organised Sports Clubs in the District.

EDWARDS' RESTAURANT

Manchester St., Luton.

The Best Known House in Luton.

**Football Parties,
Dinners & Socials**

— Specially Catered for. —

Good Accomodation for Cyclists.

EVERYTHING OF THE BEST QUALITY.

"Have TEA at EDWARDS'"



ROBERT M. HAWKES (Left Half-back).

In days to come it is not improbable that there will be a statue at the little village of Breachwood Green, which is in Herts, although a doorstep of Luton. That statue will tell all and sundry that the village provided Luton Town with its most famous player, and England a son who upheld its honour in international football, and his name is Robert M. Hawkes. Bob Hawkes has been the idol of the Luton followers for many years, a pillar of the team, and stands for all that is best, not only in professional but football of any kind. He is now a veteran, but can show others how it should or should not be done. He is of the same height as Fred Hawkes, but 14lb. lighter.

NEW HUDSON CYCLE DEPOT

H. G. PARTRIDGE & Co.

FOOTBALL SPECIALISTS

Club Secretaries and all Footballers !

OUR QUALITY IS RIGHT !!
OUR PRICES UNBEATABLE !!

New Hudson Cycle Depot

(H. G. PARTRIDGE & Co.)

Chapel Street, Luton.

— Telephone : 234 LUTON. —



FRED HAWKES (Full-back).

We need hardly tell Luton that Fred is not related to Bob Hawkes except by the ties of friendship, but there may be a few scribes who will make that mistake. Originally a forward, he afterwards became a half-back, and now he chooses to be a full-back. Possibly at the end of another 18 years he may bloom as a rising young goalkeeper. One of the coolest of players, even his "bad" days are good in many parts. A spell of Army life has not destroyed his youthfulness, nor his steadiness of character. He thinks more than he talks and plays as he thinks—courageously and well-balanced. He partnered Dick Elvey at Millwall during last season, and his liking for the back division has induced him to style himself a full-back. Fred is 5ft. 8½in., weighs a trifle over 11st., is in the thirties, but looks, and usually feels, about 17.

— THE —
FOOTBALL GROUND

is only a short distance from the
**Leading Temperance Hotel
and Restaurant, i.e.,**

The Franklin

**THE MOST UP-TO-DATE RESTAURANT
IN THE TOWN.**

Front of the Town Hall,

GEORGE STREET, LUTON.

* * *

The Best of Refreshments.

Splendid Accommodation.

Visiting Teams well Catered for.

Prices very Moderate.

**This House is well-known and Specially
Recommended.**

HARRY JONES, Proprietor.



SIDNEY HOAR.

This local lad was just coming into prominence when the war broke out, but he played several sterling games for the Town in the first season of the war. In war time football he came on apace, and proved almost as useful at outside right as on the other extreme, which was supposed to be his rightful place. He started his career with Leagrave Juniors, then went to Toddington, and after a few months he was taken over by the Clarence. He was signed by the Town in January, 1914, and fully justified the high opinion of the best judges. He is fast and clever, and any timidity which remained when he first came to the Town has vanished. He is 24, stands 5ft. 8in., and weighs in the neighbourhood of 10st. At present he is not demobilised, but he hopes soon to be in harness for the Town.

"I like Quin-Tonis,
it suits me."



There are very few tonics that can
be so confidently recommended as

QUIN-TONIS

for the many complaints arising from
an overworked constitution, such as

**ANÆMIA, NERVOUS DEBILITY,
NEURALGIA, LOSS OF APPETITE,
DYSPEPSIA, POORNESS OF BLOOD,
WEARINESS, SLEEPLESSNESS,
MENTAL DEPRESSION.**

Sold in 3/- Bottles by

**WALTER S. CLARK, PHARMACEUTICAL
CHEMIST,
George Street, LUTON.**



J. R. ELVEY (Right Full-back).

The popular right full-back might have signed for any one of the hundred best clubs in the country, and would have received a warm welcome anywhere. A sedate, steady fellow, he learned the rudiments of the game while at Dunstable-road School, then assisted Leagrave, and afterwards the Clarence. For two of the three seasons he was with the Clarence he was captain, and was always a first choice for the county eleven, and he also played for the Southern Counties against London. The Town is his only professional club, for he signed professional forms only at the beginning of season 1913-14. His physique is far from robust, but his play has all the qualities which go to make the best defender: courage, steadiness, and judgment. He played for Millwall in the London Combination last year, and was chosen to play for The Rest against the Champions. He is 27, 5ft. 9in. in height, and weighs 11½st.



CHARNLEY & SONS

are Members by Examination
of the
British Optical Association.

Sight Testing.
Spectacle Fitting.
Repairs—

HOURS . . . 9.30 to 1. 2.30 to 7.

15, WELLINGTON STREET,
LUTON.



H. DAY (Groundsman).



W. LAWSON (Trainer).

SHOOLBRED & CONNELL

Engineers & Electricians.

Electric Motors,

Electric Lighting,

Motor Car Repairs,

Car Lighting Sets
Overhauled and
Repaired,

Vulcanized Repairs
to Tyres.

1, Langley St., LUTON.

'Phone 552.

Bedfordshire FOOTBALL ASSOCIATION.

SEASON 1919-20.

DURING the five years that have elapsed since the last publication of this handbook matters connected with the Bedfordshire Football Association have been parlous. The outlook for season 1914-15 was very bright, but the outbreak of war upset all arrangements. All competitions in the county were disbanded. After a while various competitions were formed to provide sport mainly for the military and those left at home on munition work. But the works of the Association as an Association for all real purposes were shut down. The 1914 annual meeting was held on May 21st of that year. The next general meeting was not held until August 16th, 1919. There was thus a break of five and a quarter years. What the future has in store is a problem. The various competitions will again be running. The County Cup Competition, Senior and Junior, will doubtless attract a large number of entrants. The Bedford League is well under weigh with a combination combination comprising four divisions. The Leighton League people are moving, and the Luton League has now commenced to put its house in order. A new league has also been formed in South Beds, which will include most of the principal clubs in that district.

When the Association suspended operations in 1914 there were 139 clubs and 10 competitions in membership. It cannot be expected that these figures will be reached this year. Many clubs as yet hardly know where they are, and the ground difficulty is preventing others from taking up active service again. But the same old enthusiasm is there, and before long we shall be well under weigh. The troubles will be surmounted, and there is no reason why before very long the Association should not regain its former prosperity.

The Officers of the Association are:

President: Mr. E. Lionel Finch, Bedford.

Vice-Presidents: Mr. C. H. Ridgway, Leighton, and Mr. J. H. Scott, Luton.

Auditors: Mr. G. Wistow Walker, Luton, and Mr. H. Eaton, Bedford.

DISTINCTIVE FINISH

Marks Brown's Work.

HIGH - CLASS MOTOR BODY WORK.

Hoods Re-covered

Body ∴ ∴ ∴
Reconstructions.

Wings, Plain,
Dome and . .
Vanden Plas.

Motor Cycle Tanks
Silvered or Enam-
elled in Standard
Colours, including
Maker's Transfer.

**Satisfaction
Guaranteed.**

Hoods Re-covered

Body ∴ ∴ ∴
Reconstructions.

Wings, Plain,
Dome and . .
Vanden Plas.

Motor Cycle Tanks
Silvered or Enam-
elled in Standard
Colours, including
Maker's Transfer.

Specialists in Repainting Upholstery.

BROWN BROS.,

Motor Body Works,

*Phone
851.

Park Street, Luton.

Council: Mr. Edgar Wood, Biggleswade; Mr. E. Humphreys, Bedford; Mr. F. C. Drage, Bedford; Mr. T. Bunker, Leighton; Mr. C. Green, Luton; Mr. E. Day, Luton; Mr. S. Kilby, Luton.

There may be changes in the Council in the coming season, as all have to seek re-election. The election takes place by ballot early in September, those clubs whose annual subscriptions are paid by September 1st having the right to vote.

LIST OF AFFILIATED CLUBS.

Amphill Town, S. Richardson, Oliver Street, Amphill.
Arlesey, E. G. Albon, Avondale Terrace, Arlesey.
Bedford Town, E. W. Taylor, 108, Howbury Street, Bedford.
Bedford Igranic, T. Merrall, 17, Bridge Road, Bedford.
Bedford Melrose United, A. Dennis, 4, Little Grove Place, Bedford.
Bedford Britannia Works, A. Dearden, 27, Houghton Road, Bedford.
Bedford St. Mary's.
Bedford Depot, L.-Cpl. Little, Garrison School Barracks, Bedford.
Bedford Queen's Works, F. Drage, 128, Dudley Street, Bedford.
Bedford Sports Athletic, W. Webster, c/o The Aerodrome, Cardington, Bedford.
Bedford Grosvenor Works, H. Hill, Southend Hotel, Bedford.
Bedford Queen's Park United, F. Chester, Marlborough Road, Bedford.
Bedford Queen's Park Rangers, P. Clark, Harpur Street, Bedford.
Bedford St. Cuthbert's, F. Wing, 8, Denmark Street, Bedford.
Beeston, C. W. Hull, Council Cottages, Beeston, Sandy.
Biddenham United, W. Green, Three Tuns Farm, Biddenham.
Biggleswade, C. E. Green, Drove Road, Biggleswade.
Dunstable Waterlows', F. E. Hewgill, c/o Waterlows' Works, Dunstable.
Dunton, B. Bennett, Dunton, Biggleswade.
Clophill and Maulden United, S. Matthews, High Street, Clophill.
Cranfield, W. Spayler, Church Villa, Cranfield.
Eaton Bray, S. G. Deverill, Eaton Bray.
Eaton Socon, A. McKechnie, Eaton Socon, St. Neots.

If this Page interests you follow it up.

An Advertiser writes:—

"Aug. 25th, 1919.

"Dear Sirs,

"Kindly insert the following advertisement in your valuable paper. I might add I have purchased several articles advertised in *The Luton News*, and found it an excellent paper."

If you are in business and
have goods for sale, or you
want to make a purchase,

ADVERTISE IN

The Luton News
The Saturday Telegraph
The Tuesday Telegraph

The success obtained by others
can be secured by you.

One issue of the above Series of Papers
exceeds 32,000 Copies.

Enquiries Solicited.

Elstow School, Cpl. Bennett, Elstow School, Bedford.
Flitwick, Thos. Strickland, School House, Flitwick.
Goldington, E. N. Brewer, King Edward Road, Goldington.
Great Barford, W. T. Moor, The School, Great Barford.
Henlow, H. Taylor, Park Lane, Henlow.
Houghton Regis, F. Collier, The Green, Houghton Regis.
Kempston Rovers, E. W. Whitworth, Silverdale Street, Kempston.
Langford, Hon. Sec., Tingey's Cottages, Langford.
Leighton Morgan's, T. G. Clarke, Oak Road, Linslade, Leighton Buzzard.
Luton Amateurs, A. Gilder, 35, Moor Street, Luton.
Luton Christ Church, P. Bates, 3, Villa Road, Luton.
Luton Cliftondale, J. Vass, 45, Chapel Street, Luton.
Luton Clarence, L. E. Hawkes, 22, Naseby Road, Luton.
Luton Cliftondale Juniors, F. Randall, 40, Lea Road, Luton.
Luton Commercial Cars, F. Jenkins, c/o Commer Cars, Luton.
Luton Cocoa Works, P. W. Impey, 7, Stanley Street, Luton.
Luton Davis Athletic, A. McArthur, 23, Clifton Road, Luton.
Luton Frickers, R. S. Allen, c/o The Works, Portland Road, Luton.
Luton Havelock, R. M. Evans, 4, Clarendon Road, Luton.
Luton Skefko, C. W. Bailey, Gardenia Avenue, Leagrave.
Luton Town, C. Green, 73, Hazelbury Crescent, Luton.
Luton Trinity.
Luton Vauxhall Motors, W. Folds, 43, Baker Street, Luton.
Luton Gordon Juniors, D. Russ, 92, Ridgway Road, Luton.
Luton Social Club, F. G. Millard, 14, Silver Street, Luton.
Luton Kent's Rangers, W. Gooch, 32, Pondwicks Road, Luton.
Markyate, G. Bunyan, 9, Linden Road, Markyate.
Potton Town, W. W. Perry, Cycle Agent, Potton.
Sandy Albions, H. G. Finding, Bedford Road, Sandy.
Stotfold, C. E. Pinner, Oak Villa, Stotfold.
Stevington, A. Warwick, Stevington.
Shillington, F. W. Arnold, Green End, Shillington.
Toddington, P. Evans, High Street, Toddington.
Westoning.
Wootton Blue Cross, R. B. Walker, Wootton, Bedford.
Meppershall, J. Dunham, Meppershall, Shefford.
Marston Rovers, W. Wright, Millbrook, Ampthill.
Sharnbrook, E. Chappell, Colworth, Sharnbrook.
Willington, L. Golder, Willington.
Wilstead United, H. Nottingham, Bedford Road, Wilstead.

LUTON CLARENCE F.C.

It is a matter for regret that the chief amateur club of the town will not be seen in town except on rare occasions during the coming season. The club was unable to secure an extension of its tenancy of the Stockingstone-lane ground, and arrangements have had to be made for the playing of games in the Athenian League away from home.

The officials for the season are: President, Alderman H. O. Williams, J.P.; Captain, A. Webdale; Vice-Captain, P. Lovell; Hon. Treasurer, A. Eling; Hon. Secretary, L. E. Hawkes; Hon. Auditors, F. Parsons and F. Ball; Committee, Messrs. C. Rogers, F. Lane, A. Rumbles, P. Webdale, W. Hubbard, W. Lane, H. S. Parsons, G. and J. Wilson.

Members and supporters of the club regret the death in action of Whitworth and Edgar Ward.

The club has entered for the English Cup, and been excused the qualifying round of the Amateur Cup, and will defend possession of the Beds County Cup. The fixtures in the Athenian League are:

Aug 30.—Chelmsford	Away
Sept. 6.—Wimbledon	Home
„ 13.—Bromley	Away
„ 20.—Kingstonians	Home
„ 27.—Cheshunt	Away
Oct. 11.—Uxbridge	Away
„ 18.—Bromley	Home
Nov. 1.—Southall	Home
„ 15.—Chelmsford	Home
Dec. 6.—Metrogas	Away
„ 26.—Uxbridge	Home
Jan. 3.—Hampstead	Home
„ 31.—Wimbledon	Away
Feb. 7.—Summerstown	Home
„ 14.—Barnet Alston	Away
„ 28.—Kingstonians	Away
Mar. 6.—Cheshunt	Home
„ 13.—Summerstown	Away
„ 20.—Metrogas	Home
„ 27.—Hampstead	Away
Apr. 17.—Barnet Alston	Home
„ 24.—Southall	Away

BOYS' & MEN'S —OUTFITTING.



We shall be pleased to show you our New Seasons delivery of BOYS' and MEN'S Wear, knowing that for Value, Style, Cut, etc., they are unbeatable. Satisfaction guaranteed or money refunded is our method of business.

'ACQUASCUTUM' COATS
'N & C' RAINCOATS
'JAEGER' UNDERWEAR
'WOLSEY,' 'RAMESES,'
'ALPHA' etc. Underwear.

SMART LOUNGE SUITS
from 77s. 6d.

TWEED OVERCOATS
from 55s.
Splendid Range in Newest
Styles.

CAPS, FELTS & VELOURS

SEE WINDOWS.

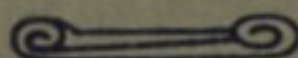
**BLUNDELL
BROS., (LUTON)
LTD.,**

Boys' & Men's Outfitters

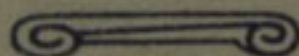
'PHONE 689.

CHEAPSIDE, LUTON.

If
it's



OVERCOATS



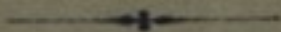
Go
to

Chas Mares

6, 8, 10, George Street,

— **LUTON.** —

Branch: 187, Dunstable Rd.



**BEST
VALUES.**

**POPULAR
PRICES.**