

THE "LUTON NEWS"

PRICE

3d.



Football Handbook

1921-22.

Still Leading !!

FOSTER BROS.
CLOTHING CO., LTD.

EVERYTHING
IN
Men's, Youths' & Boys'
WEAR.

22, Market Place,
LUTON.

ALSO 100 OTHER
BRANCHES.

Brown & Green

LTD.,
ENGINEERS and FOUNDERS.

MAKERS OF ALL CLASSES OF
MACHINES
REQUIRED FOR FELTS, STRAW
HATS, COPPER STEAMERS, &c.

*Skilled workmen always at your
service for pipe work and repairs
to any machine for the Straw
trade.*

Windsor St., South Rd.,
Castle Street, — LUTON.

Phone 104.

Grams. : "Gem, Luton."

A Successful Season.

Never have expectations been quite so high as this season. Not only in the town, but far afield in the county and right into Herts and Bucks are to be found the supporters of the club, and the gallant bids for Cup fame and for League honours last season won many new friends.

Will this season surpass last? Well, we hope so, and as the best of the players have been retained, and new men have been secured with a view to providing a more efficient reserve our expectations are that the Town will create at least a new record in the English Cup and win promotion to the Second Division of the League.

CLUB OFFICIALS.

Directors:

H. ARNOLD, Esq., J.P. (Chairman).
Messrs. W. J. ALLEN, P. A. EDWARDS, E. GIBBS,
E. MOUSE, H. SMART, W. SOPER, OSCAR HART,
STANLEY GODFREY.

Auditor:

THOS. KEENS, Esq., F.C.A.

Secretary:

CHAS. GREEN, 73, Hazelbury Crescent, Luton.

Colours: White jerseys, black knickers.

Ground: Kenilworth Road, Luton.

... THE ...

COUNTY BUSINESS TRANSFER AGENCY

(W. L. HAWKINS, Proprietor).

| | | |
|-----------------|---|----------------|
| <u>Business</u> | } | <u>Agents.</u> |
| <u>Estate -</u> | | |
| <u>Property</u> | | |

25, CHEAPSIDE, LUTON,
And at 58, STUART STREET.

ALL KINDS OF
BUSINESSES
DISPOSED OF
PROMPTLY.



ESTABLISHED
25 YEARS IN
BEDS., HERTS
AND BUCKS.

TEL. 883.

ALEC. WATSON'S, LTD.

FAMOUS FOOTBALL OUTFITS.

FOOTBALL JERSEYS.

| | Youth's. | Men's. |
|---|--------------|-------------------|
|  Vert. Stripes | 31s. to 45s. | 39s. to 72s. doz. |
|  M.U..... | 45s. & 48s. | 48s. to 54s. „ |
| Villa..... | 39s. to 45s. | 42s. to 72s. „ |
| Seifs | 36s. to 42s. | 39s. to 72s. „ |
| City | 48s. | 51s. |

FOOTBALL KNICKERS.

White, Youth's: 25s. 6d., 27s. 6d., 34s., 45s., 51s. doz.
Ditto, Men's: 27s. 6d., 31s. 6d., 36s., 48s., 54s., 60s., „
Navy 3/- doz. extra.

STOCKINGS: 18s., 21s., 39s. & 50s. doz. pairs.



GOAL NETS

Complete: 90s., 103s., and 125s. per set.
Nets only: 60s., 71s. 6d., and 94s. „

Specialities: "Special League and Perfection" FOOTBALLS.

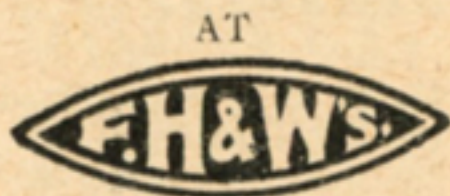
The "Perfection" Football, made in 12 panels, as used in English Cup Final and Semi-Final Ties; also by Manchester City, Stoke, Oldham Athletic, Southend United, Manchester United, &c. The most perfect Ball produced. Every one a perfect shape and guaranteed. (Prices on application.)



Write To-day for 1921-22 Football Catalogue, with
Coloured Jersey Sheet, post free from

Head Office : 39, PICCADILLY, MANCHESTER

Get Your 'FOOTER' BOOTS



Who have the largest and most varied selection in the country.

**BEST MAKES
LATEST IMPROVEMENTS
KEENEST PRICES**

Men's:

12/9, 13/9, 16/9, 18/9

Youths' (2-5):

10/9, 12/9, 15/9

Boys' (11-1):—8/9



See the Special Shows at our Local Store.

Our 'BARBARIAN' Reg. Brand is a boot of Super Quality and will give every satisfaction in wear. Nothing better at the price, Men's 16/9, Youths' 15/9

FREEMAN, HARDY & WILLIS, LTD.
38, George St., LUTON.

Last Season's Record.

The following particulars of last season will be useful:

POSITION IN LEAGUE: THIRD DIVISION, 9.

| Goals. | | | | | | |
|--------|----|----|----|----|----|----|
| P | W | L | D | F | A | P |
| 42 | 16 | 14 | 12 | 61 | 56 | 44 |

ENGLISH CUP.

| Goals. | | | | | |
|--------|---|---|---|----|---|
| P | W | L | D | F | A |
| 4 | 3 | 1 | 0 | 11 | 5 |

PLAYERS' APPEARANCES.

The League: Division III.

The following are the players' appearances:

Goal.—H. Bailey, 37; J. Watson, 4; R. Abbott, 1.

Full-backs.—G. Lennon, 36; A. Tirrell, 36; J. Semple, 7; F. Hull, 3.

Half-backs.—W. Molyneux, 35; T. Parker, 34; J. W. Lamb, 24; W. Walsh, 10; A. Roe, 7; H. Cockerill, 7; H. Higginbotham, 2; A. Mathieson, R. Bayliss, W. Walker, J. Millar, 1 each.

Forwards.—E. Simms, 39; L. Bookman, 39; S. Hoar, 38; A. Mathieson, 27; H. Higginbotham, 24; G. Butcher, 16; P. Hill, 6; J. Bradley, 5; A. Roe, 4; J. Shankland, 3; H. Sidney, 2; C. Pett, 1; J. McKechnie, 1.

In Cup-ties only 12 players were required for the four games, and the appearances were: H. Bailey, G. Lennon, A. Tirrell, W. Molyneux, T. Parker, J. W. Lamb, S. Hoar, H. Higginbotham, E. Simms, L. Bookman, 4; A. Mathieson, 2; G. Butcher, 2.

GOAL SCORERS.

The League, Division III.—Simms, 29; Mathieson, 11; Hoar, 6 (2 penalties); Hill, 4; Bookman, 4; Higginbotham, 3; Butcher, 3; Bradley, 1.—Total, 61.

Cup Ties.—Simms, 5; Higginbotham, 3; Butcher, 2; Bookman, 1.—Total, 11.

Southern League.

| Goals. | | | | | | |
|--------|---|---|---|----|----|----|
| P | W | L | D | F | A | P |
| 24 | 8 | 8 | 8 | 38 | 30 | 24 |

WILLS' FAMOUS FOOTBALLS
KICKED ALL OVER THE KINGDOM
BEST KICK IN THE KINGDOM



WILLS & CO., LANCASHIRE SPORTS FACTORY
Yorkshire Street, OLDHAM.

Thousands of
Association and Rugby Footballs
 (hand-Sewn Solid Hide),
 18/6 21/- 22/6
 25/- & 27/6

Thousands of
Football Boots
 12/6 14/6 18/6
 21/- 22/6 and
 25/- per pair.

Jerseys, Knickers, Stockings.

Everything for
FOOTBALL READY FOR IMMEDIATE DISPATCH

Send for Free Lists.

All the Best Clubs use our Goods.

WILLS & CO., LANCASHIRE SPORTS FACTORY
Yorkshire Street, OLDHAM.

Tel. No. 715.

| South-Eastern League. | | | | | | |
|-----------------------|---|---|---|----|----|----|
| Goals. | | | | | | |
| P | W | L | D | F | A | P |
| 14 | 7 | 6 | 1 | 22 | 20 | 15 |

| Friendlies. | | | | | | |
|-------------|---|---|---|----|---|---|
| Goals. | | | | | | |
| P | W | L | D | F | A | P |
| 6 | 3 | 2 | 1 | 16 | 6 | |

PLAYERS' APPEARANCES.

Southern League.

Bayliss, 21; McKechnie, 20; Hill, Cockerill, 19 each; Semple, 18; Sidney, 17; Reynolds, Hull, 16; Abbott, Roe, 13; Walsh, 11; Shankland, 10; Bradley, 9; Lamb, 8; Watson, 7; Archer, Stewart, Hensman, 5; Thwaite, Davis, Wilkins, Mathieson, Fairclough, 3 each; Atkins, Harris, Barringer, Swain, Hemsall, 2 each; Wright, Burn, Lawson, Pett, Walters, Higginbotham, Millar, 1 each.

South-Eastern League.

Bayliss, 13; Cockerill, 11; Reynolds, Semple, Roe, Hull, 10; Abbott, 9; Walsh, 8; McKechnie, Shankland, 6; Bradley, 5; Sidney, Wilkins, 4; Mathieson, Lamb, Watson, Hill, Atkins, 3; Davis, R. S. Cockerill, Bailey, Barringer, Hensman, Walker, 2; Newman, 2; Darwin, Archer, Henderson, Pett, Doolan, Fairclough, Thwaite, Molyneux, Millar, Lawson, Tirrell, Phillips, Brown, Stewart, Nicholls, Barfield, Smith, Gray, Higginbotham, 1 each.

Friendlies.

Bayliss, Cockerill, Hull, Sidney, 6 each; Hill, McKechnie, Shankland, Reynolds, 5 each; Semple, 4; Abbott, Roe, Swain, 3 each; Bradley, Millar, Stewart, 2 each; Henderson, Higginbotham, Walsh, 1 each.

GOAL SCORERS.

Southern League.

Roe, Hill (2 penalties), 9; Bradley, 4; Mathieson, Shankland, 3; Hensman, 2; Sidney, Cockerill, Lamb, Atkins, Semple, Fairclough, Bayliss, McKechnie. Total 38.

South-Eastern League.

Roe, 5; Hill, 4 (3 penalties); Walsh, 3; Atkins, Mathieson, Cockerill, Semple (1 penalty), 2; Bradley, Shankland, 1 each. Total 22.

Friendlies.

Roe, Hill, 5; Shankland, 3; McKechnie, Walsh, Henderson, Sidney, 2 each. Total 16.

Luton Aluminium

Castings Co.,

—MANUFACTURERS OF—

High Class Motor Castings.

. Motor Number Plates. .

**Aluminium Hat Pans for all
Types of Blocking Machines.**

DELIVERY GUARANTEED

day following receipt of model.

ALL PANS WELL FINISHED

- - AND NON-POROUS. - -

Address :

South Road, Luton.

Phone 104, Extension 8.

Men who have Played for Luton

Since it adopted Professionalism.

1891-2. J. Burley; Sanders, Hoy; Wright, Paul, Taylor, E. H. Lomax; F. K. Whitby, Deacon, C. Lomax, Ocle, H. Whitby, Cheshier.

1892-3. Burley, T. Read; Sanders, Hoy, George, Wilson; Wright, Julian, Taylor, Watkins; Brown, Cheshier, Allen, H. and F. Whitby, Barbour, Galbraith, J. McKenzie, Kirk.

1893-4. Bee; Cheshier, Wilson, C. Reed; Watkins, Julian, Taylor; H. Whitby, Allen, Galbraith, Finlayson, Vickers, J. Dimmock, Brown, Hayes.

1894-5. Bee; Cheshier, M. D. Nicholson, McEwen, Watkins, McCrindle, Howe, Collins; Brown, Gallacher, Galbraith, Prentice, Allen, Dimmock, Jack.

1895-6. Jack Russell, Williams; Stirton, M. D. Nicholson, McCartney, McEwen; Watkins, Stewart, Docherty; Gallacher, Finlayson, Galbraith, Parkinson, Birch, Ekins, Coupar, Dimmock.

1896-7. Williams; Davies, McCartney, McEwen; Perrins, Stewart, Docherty, Watkins; Gallacher, Finlayson, McInnes, Galbraith, Birch, Coupar, Ekins, Dimmock, Brown.

1897-8. Williams; McCartney, McEwen; Davies, Stewart, Docherty, Perrins; Gallacher, Coupar, Birch, Clarke, Donaldson, Little, McInnes, Ekins, Durrant.

1898-9. Perkins; H. Williams, Moore, Dow; C. Ford, Clark, Sharp, Crump; Durrant, Hewitt, W. Ford, Kemplay, Draper, McInnes, Brock, Ekins.

1899-1900. Daw; Dow, McCurdy; Morrison, Stewart, Brown, Williams, Rally; Inglis, Brock, Fairgrieve, Draper, McInnes, Eckford.

1900-1. Monks; Ord; Lindsay, McCurdy; Clifford, Holdstock, Williams, Cox; Brown, Blessington Molyneux, Burbage, Dempsey, Tierney, Saxton, Durrant.

1901-2. Ord; Lindsay, Sharp, Street; F. Hawkes, White, Williams, R. Hawkes; Durrant, Blessington, Brown, Barker, Tierney, Colvin.

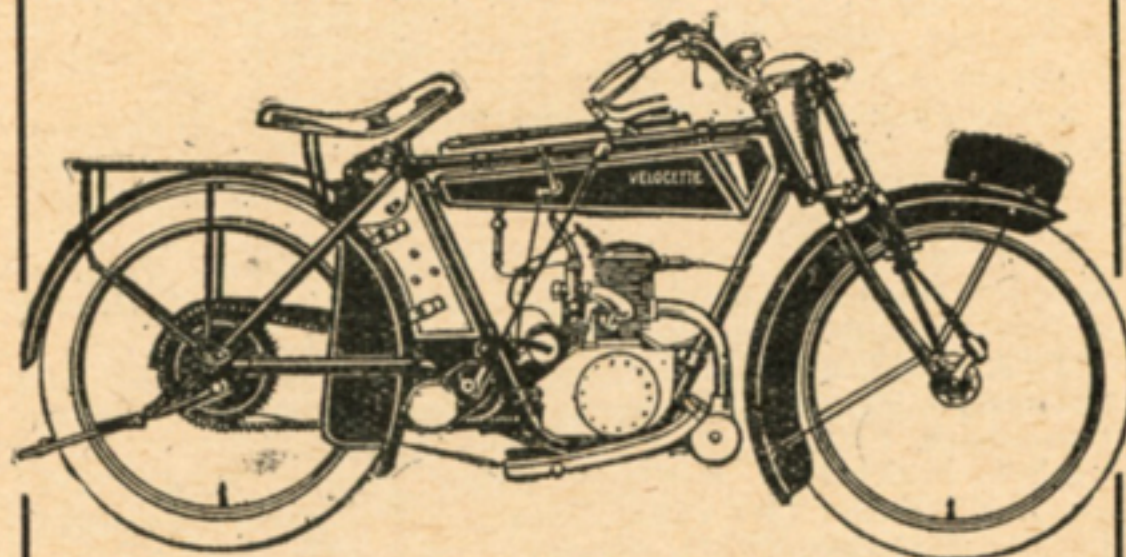
1902-3. Frail; Lindsay, Sharp, Hood; F. Hawkes, White, Williams, R. Hawkes; Durrant, Blessington, Hilsdon, Moody, Davidson, Gall, Allsopp.

1903-4. Thompson; Bennett, McEwen; F. Hawkes, White, R. Hawkes, Williams; Durrant, Eaton, McKee, Storey, Moody, Allsopp, Griffiths, Madden.

Velocette

MOTOR CYCLE.

For reliability and speed the Velocette comes first of all lightweights. It has conclusively demonstrated time and again that, as a solo mount, the Velocette is practically equal to any heavyweight, but has the further



CARS.
Agents for
Chevrolet and
G.N. Cycle
Car.
Details on
request.

advantage of initial LOW cost,
LOW upkeep, lightness, and
handiness. A catalogue, with
any further information desired,
will be forwarded on application.

All Repairs promptly executed
by experienced and skilled staff.

**MOTOR
CYCLES.**
Agents for
Norton, and
Imperial Jap.
Details on
request.

DUNHAM & HAINES,
44, CHAPEL STREET, LUTON.

PHONE 865.

1904-5. Lindsay; Turner, McEwen, J. Dow; F. Hawkes, White, R. Hawkes, Pritchard, Williams; Eaton, Ross, Lamberton, Penman, Moody, Wallace, Barnes.

1905-6. Platt; Blackett, McCurdy, J. Dow, Else, Watkins; F. Hawkes, White, R. Hawkes, Gallacher; Warner, Macdonald, Brown, E. Dobson, Pickering, Barnes, Latheron.

1906-7. Platt; Hogg, Jackson, McCurdy; F. Hawkes, White, R. Hawkes, Jones, Gallacher; Warner, Schofield, Macdonald, Brown, Murphy, E. Dobson, Gittins, Pickering, Barnes, Fitzpatrick, Latheron.

1907-8. Platt, Jarvis; Hogg, Nicholson, Dimmock, McCurdy; F. Hawkes, Jones, White, R. Hawkes; Rankin, Walders, Rigate, Hall, Brown, Pearson, Farrant, Moody, Latheron.

1908-9. Platt, Jarvis; Dimmock, McCurdy, Gregory, Chapman; F. Hawkes, Jones, R. M. Hawkes, White; Brown, Rigate, Haycock, Menzies, Bradley, Stansfield, Moody, Johnson.

1909-10. Jarvis, Fry; Hedley, McCurdy, Chapman, Rayner, Ruffett, Potts; F. Hawkes, Jones, R. M. Hawkes, Slennett, Trueman; Brown, Quinn, Smith, Moody, Stansfield, Johnson, Divine, Moore, Porter, Schofield.

1910-11. Naisby, Jarvis; Wightman, Chapman, Potts, Webb, J. Ashton, C. Watson; F. Hawkes, Bushell, R. M. Hawkes, Johnson; Brown, Quinn, Walker, Smith, Stephenson, Moody, Lashbrooke, Stansfield.

1911-12. Naisby; Wightman, Potts, Ashton, A. Brown; F. Hawkes, Bushell, R. M. Hawkes, Brown, Walker, Stephenson, Moody, Stansfield, Johnson, Shepherd, Walden, Lashbrooke, Streeton.

1912-13: J. W. Day, R. Abbott, H. Bateman; C. G. Henderson, E. J. Potts, J. Jarvie; F. Hawkes, S. Thompson, T. T. Wilson, R. M. Hawkes; J. Stephenson, A. H. Wileman, W. Smith, J. Murphy, B. Holland, T. Streeton, A. Worth.

1913-14. J. T. Mitchell, R. Abbott; J. R. Elvey, J. Robinson, J. Jarvie; F. Hawkes, R. W. Frith, R. M. Hawkes, T. T. Wilson, M. Donaghy, E. Stevens, A. F. Durrant, A. H. Wileman, E. Simms, R. Brewis, F. Rollinson, J. Wilkie, S. Hoar.

1914-15. J. T. Mitchell, R. Abbott; J. R. Elvey, J. Dunn, J. Robinson, E. J. Potts; F. Hawkes, R. W. Frith, R. M. Hawkes, T. T. Wilson, E. G. Needham, J. Brandham; H. P. Roberts, R. N. Macfarlane, A. H. Wileman, A. Roe, E. Simms, W. Heath, F. Rollinson, J. Chipperfield, F. Lindley, S. Hoar.

Play Football

IN

**PUBLIC BENEFIT
BOOT Co.'s**

Football Boots

**SOLID &
RELIABLE**

SEE WINDOWS.

**CLOCK HOUSE,
Park Square, - LUTON.**

PHONE. 185

(War interval).

1919-20. P. Summers, R. Abbott, H. Whitehead; J. R. Eivey, J. Dunn, F. Hawkes, F. Hull; R. M. Hawkes, T. Urwin, J. Rutherford, T. Parker, J. Brandham, G. Bowler, P. Stewart; S. Hoar, W. J. Grimes, A. Roe, R. Tomlinson, D. Williams, E. Simms, L. Bookman, G. Dodd, F. J. Hensman, E. H. Seymour, H. Higginbotham, F. W. P. Hill.

1920-21. H. Bailey, J. M. Watson, R. Abbott; G. Lennon, A. Tirrell, J. Semple, F. Hull, A. Reynolds, F. J. Hensman; A. Roe, T. Parker, W. Molyneux, J. W. Lamb, H. L. Cockerill, L. R. Bayliss, W. Walsh, P. Stewart; S. Hoar, H. Higginbotham, G. Butcher, F. W. P. Hill, E. Simms, A. Mathieson, L. Bookman, H. Sidney, J. Shankland, J. McKechnie, J. Bradley.

BEDFORDSHIRE FOOTBALL ASSOCIATION.

(Continued from page 59.)

Sharnbrook. A G. Fountain, High Street, Sharnbrook.
Shefford United. A H. Green, High Street, Shefford. Beds.
Shillington. A W. Burr, Green End, Shillington.
Silsoe. A W. Harris, 32, Silsoe, near Ampthill.
Slip End United. A F. Dyer, 18, Summer St., Slip End.
Southill. A L. Brown, Yew Tree Farm, Southill.
Stevington United. A A. J. Mackness, The Institute, Stev-
ington.
Stopsley. A G. Cain, Stopsley.
Stotfold. A C. E. Pinner, Oak Villa, Stotfold.
Streatley United. A M. Chalkley, Chequers, Streatley.
Sundon. A A. Smith, Sundon.
Sutton Amateurs. A E. R. Stonebridge, Sutton.
Toddington Star. A F. R. Sommerton, School House.
Totternhoe. A W. A. King, Lower End, Totternhoe.
Upper Stondon. A J. Tompkins, Mount Pleasant, Stondon.
Westoning United. A R. G. Baker, Westoning.
Wilstead United. A H. A. Bridges, Rose Cottage, Wilstead.
Woburn and Woburn Sands United. A R. West, London
Road, Woburn.
Wootton Blue Cross. A R. B. Walker, Wootton, Bedford.
Wymington Stars. A A. Hall, White Horse Yard,
Wymington, near Rushden.
A Secretary's name and address. B Ground. C Colours.

LANGLEY GARAGE

Castle Street, Luton.

Complete Service Depot

Repairs and Overhauls,
Tyres and Tubes, Accessories,
Haulage, CHAR-A-BANCS,
Hire Cars, Lock-up Garages,
New and Second-hand Cars
and Lorries.

**The Most Up-to-Date Garage in the
County.———Open Night and Day.**

Proprietor : **B. E. BARRETT.**

Telephone 846 (Private Branch Exchange).

JEFFS & SONS,

**Jewellers, Watchmakers
and Silversmiths, = =**

A Large Stock of DIAMOND
AND GEM-SET RINGS.

NEW DESIGNS IN SILVER
- - WARE AND - -
SILVER-PLATED GOODS.

WATCHES, CLOCKS AND
- - JEWELLERY. - -

**41, Wellington St.
LUTON.**

Established 1872.———'Phone 533

PALACE,

LUTON.



Always the Finest
in Variety, Pictures
:: and Music. ::

Daily from 6 to 10.45.

Matinee: Wednesdays at 2.30.

- - FULL PROGRAMME. - -

Prices (including tax) 1/- to 2/4.

'Phone 443.

STRANGE'S

The Popular Drapers

*Ladies' Raincoats
our Speciality.*

Every Department
Up-to-date with
Latest Novelties and
PRICES ALWAYS
RIGHT.

Large and Choice
Selection of Autumn
and Winter Tweeds.

34, 36, 38, 40, 42, 44,
Wellington Street,
LUTON.

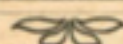
'Phone _____ 191.



New Hudson Cycle Depot

(H. G. PARTRIDGE & CO.)

Football Specialists



TO

CLUB SECRETARIES
and all Footballers!

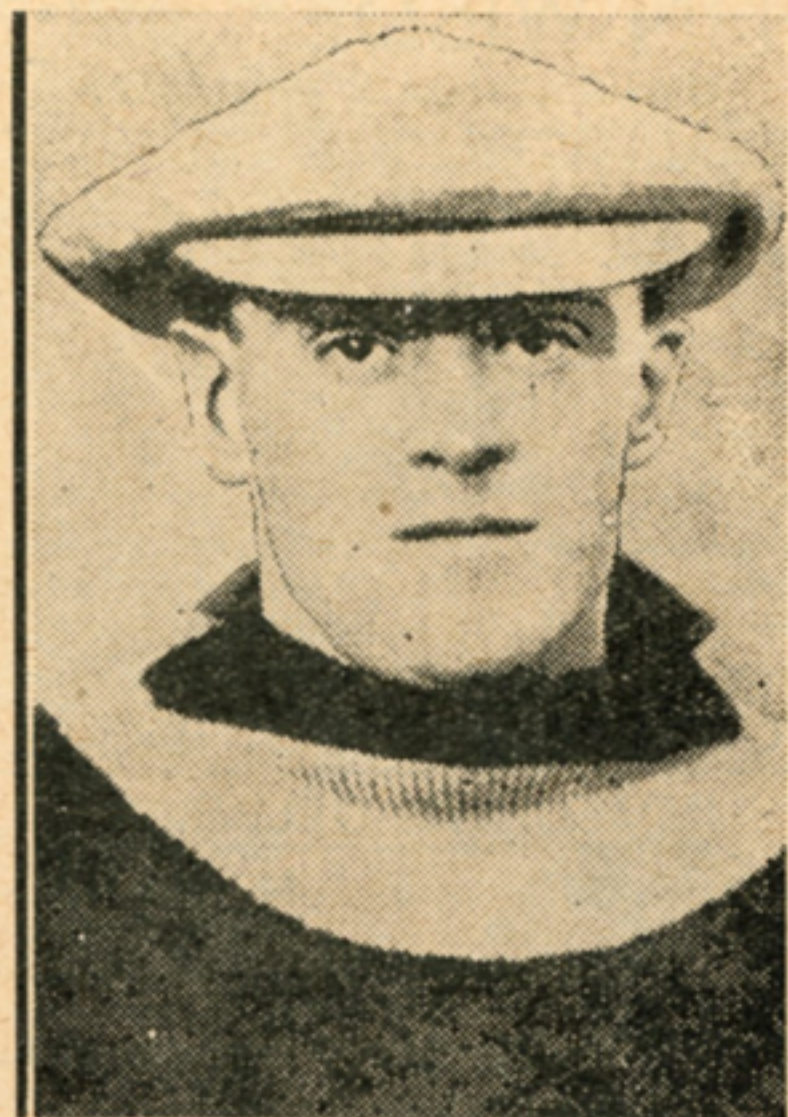
Jerseys, Knickers, Boots,
Footballs, Nets, and
every Requisite in stock.

New Hudson Cycle Depot

(H. G. PARTRIDGE & CO.)

Chapel St., Luton.

Telephone: 234 LUTON.



THOMAS GIBBON (Goalkeeper).

Recruit. Born at West Hartlepool. With Southampton in war-time when an artilleryman; peace-time found him at Merthyr; for whom he played 36 League games in 1919-20; thence to Dundee, for whom he kept goal every League game. Cricket "pro" for Arbroath United. Is 27; 5ft. 9ins., 11½st.

JOHN WISDEN & Co.,

Manufacturers & Exporters, LTD.

GENERAL ATHLETIC OUTFITTERS.

**Cricket, Lawn Tennis, Football, Golf, Hockey,
Polo, Boxing, Racquets, Fives, and all Indoor
and Outdoor Sports.**

Athletic Outfitters by
Appointment to His
Majesty King
George V.
Contractors to the
Admiralty.



Also Athletic Out-
fitters to principal
Clubs, Colleges,
Universities, and
Schools in all parts
of the world.

Telegraphic Address: WISDEN, WESTRAND, LONDON.

Telephone No.
GERRARD 2120.

23, CRANBOURN STREET,
LONDON, W.C.2.

FOOTBALL SEASON—1921-22.

IMMEDIATE DELIVERY.

| | | | | | |
|------------------------------|-----|------|------|-------|-------|
| Jerseys or Shirts ... | ... | 54/- | 60/- | 66/- | dozen |
| Rugby Jerseys ... | ... | 78/- | and | 90/- | dozen |
| Knickers (Navy or White) ... | ... | 48/- | 60/- | dozen | |
| Football Boots ... | ... | 18/6 | 25/- | pair | |
| Shin Guards ... | ... | ... | 2/6 | pair | |
| Inflators ... | ... | 2/6 | 4/- | 6/- | each |

FOOTBALLS.

The Hardinge (as used by Arsenal, Aston Villa,
Chelsea, Liverpool, Tottenham, and practically
all other first-class Clubs) ... 26/- each

Royal International 26/- each **Invicta** 20/- each

Special Sch. 21/- each

Good Practice (full size balls) 12/6 and 15/- each

GOAL NETS, GOAL POSTS, FLAGS, &c., always in Stock



HARRY BAILEY
(Goalkeeper).

Second season. Native of
Macclesfield. Came to
Luton via Millwall; before
joining the "Lions" was
Sergt.-Instructor of Gym.
Staff, Grenadier Guards.
Played for Army F.A.
team. Recruited as reserve
goalkeeper for Luton, but
played with First XI. in 38
League games and four Cup
ties. Is young enough to
win highest honours. 24;
5ft. 10ins; 12st.



FRANK HULL (Back).

Second season. Native of
Dunstable; learned his foot-
ball in Luton, and joined
Town from Luton Amateurs.
Only got three chances to
play with First XI. last
season, but did very well.
Strong tackler, good kick
with either foot. Is 25, 5ft.
9ins.; 12st.

'Phone 223.

Est. 1860.

— GET YOUR —

HOTSPUR FOOTBALL BOOTS

FROM . . .

H. WHITE

Sole Agent for
the famous

**Manfield-
Hotspur.**



All the best
and leading
brands stocked.

26/30, Manchester St., Luton



GEORGE LENNON
(Right Back).

Second season. Native of Kilwinning, Ayr. First big club was Third Lanark, but came to Luton after five months with St. Mirren. Only once lost his place, and that through injury. Very fast, with fine powers of recovery, dour tackler and splendid length kick. Steady as a Scottish elder and very popular. Is 26; 5ft. 8ins.; 12st.



ALFRED TIRRELL
(Left Back).

Second season. Native of Desborough, went to West Ham United from Kettering when in teens. First match with Luton was in Reserves, then played 37 consecutive League and Cup games with First XI. until collar-bone was broken. Was elected captain. Is sturdy player of fine judgment. Is 27; 5ft. 11ins.; 13st.

DICKINSON & ADAMS Ltd.

**Motor Engineers and
Haulage Contractors.**

**DISTRICT AGENTS
FOR THESE
MOTOR CYCLES.**

CYCLES.

B.S.A., Indian, Ariel,
Enfield, Triumph, -
A.J.S., Zenith, Royal
Ruby, Douglas, Lea
Francis, Rudge, Hum-
ber, Blackburne, Sun-
beam, Hobart, N.U.T.
Matchless, Harley-
Davidson.

**DISTRICT AGENTS
FOR THESE
MOTOR CARS.**

CARS.

Albert, - Bianchi,
Vulean, Overland, -
Belsize, - Cubitt,
Hillman, Talbot, -
Wolseley, - Morris-
Oxford, Morris-
Cowley, - Rushton,
Hornsby.

**Open and Closed Cars for Hire by the Hour,
Day, Week or Contract.**

CHAR-A-BANCS FOR HIRE.
- 14, 19, and 24 Seaters. -

FREDERIC ST. and NEW BEDFORD RD.
LUTON.

Phone.
930-1

Telegrams :
"Efficiency, Luton."



**ROBERT CURRIE
GRAHAM (Back).**

Recruit. Native of Muir-
kirk, Ayr. Won four
medals with Kilwinning
Rangers last season, and
twice was Scottish junior
International. Secured by
Luton, although wanted by
Greenock Morton, St.
Mirren, and Kilmarnock. Is
steady lad with pace and
judgment, a resolute tack-
ler and a good kick. Only
20; 5ft. 10ins.; 11½st.

**WILLIAM WALSH
(Half Back).**

Second season. Native of
Horden, where learned
football during leisure from
coal-mine. Came to Luton
early last season as a
centre-half, but developed
as left half. Vigorous, but
clean of style, with plenty
of stamina. Is 24; 5ft.
9ins.; 11½st.



G. A. WILD & SONS,

Saddlers and

Sports Outfitters,

14, Manchester Street,
LUTON.

Footballs Jerseys

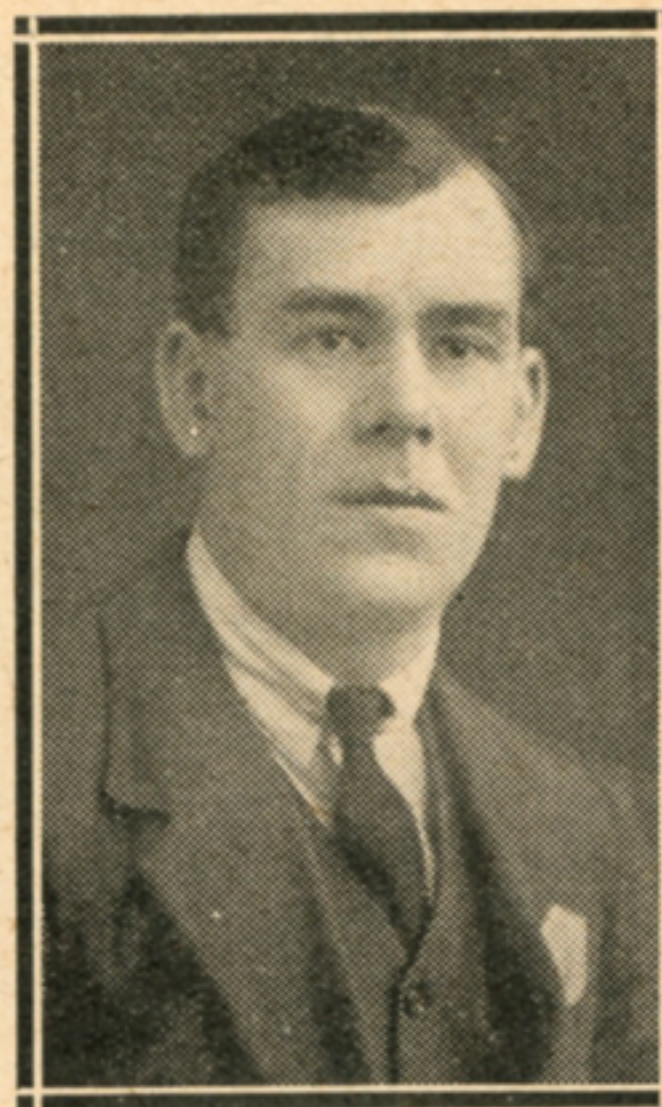
Knickers Hose

Boots Nets

Bags

and all Football Requisites
a Speciality.

INSPECTION INVITED WITH OPTION OF PURCHASE.

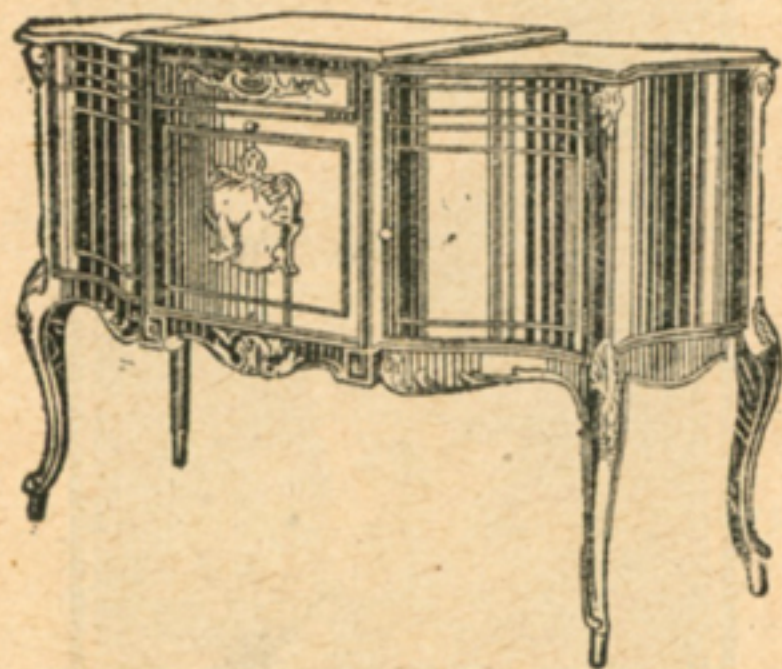


JOHN HENRY FOSTER (Half-Back).

Recruit. Hails from Barnsley, and graduated with Barnsley Reserves and Worksop, left coal mine for Notts County, for whom he played five seasons before joining Luton at Whitsuntide. Played in 32 First Division games with Notts in 1919-20. Is vigorous exponent and has physique for it; 27; 5ft. 11in.; 12½st.

ARTHUR DAY'S

PIANOS ARE THE BEST.



LOUIS XV DE LUXE.

SONORA GRAMOPHONES

Supplied in 31 exquisite models
From **24 Guineas**

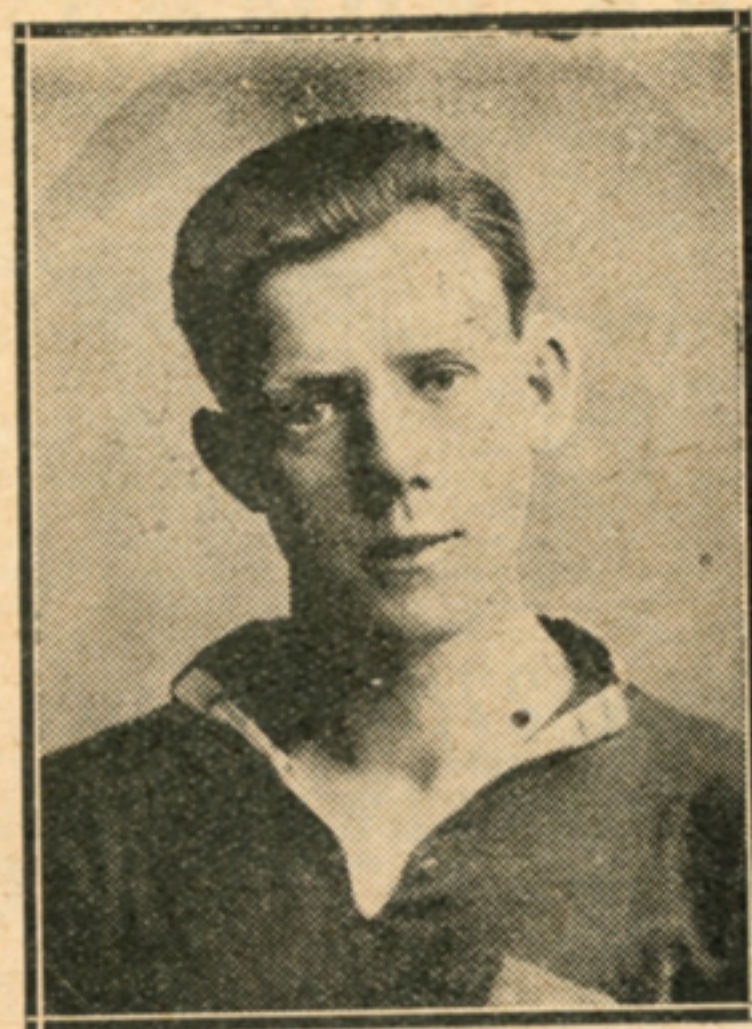
The INSTRUMENTS OF QUALITY.

A large
selection
of sheet-
music
always in
stock.

*43 and 45,
George Street,
LUTON.*

Phone.
481.

Inspection of
our show-
rooms
cordially
invited.



ROBERT MILLER (Half-Back).

Recruit signed after month's trial last back end. Another from the Burns country, being a native of Dalry. Played with Glengarnock, Dalry Thistle, and is Scottish junior International. Preferred coming South to going to Motherwell or Merthyr. An auburn-haired youngster of earnest type. Is 21; 5ft. 10ins.; 11½st.

Practice true economy. Buy from

JOHN BOWMAN,

late Player-Manager, Stoke F.C., Queen's Park Rangers F.C., Norwich City F.C.

London's Expert Football and Sports Outfitter, supplies more first-class clubs than any retailer in the South. Twenty years' experience is at your disposal. John Bowman's famous

"ARROW" Football (18 panels)

special design, admitted the finest ball in the country. Guaranteed to keep a perfect shape in all weathers and conditions. Makes football playing a real pleasure. The most economic proposition in footballs ever placed before the public; used by many leading League Clubs and Associations, etc., including London F.A., Kent F.A., Chelsea, Plymouth Argyle, Millwall, Clapton Orient, Swansea, Queen's Park Rangers, Watford, Southend, etc.

Price 27/6 post free

TARGET (23/11), **FLIGHT** (21/-), both post free, are superb 12-panel balls with the usual Bowman guarantee. All the above three Footballs are returnable and exchanged or money refunded if they do not give entire satisfaction in play. Bowman's **CLUB PRACTICE**, 12 or 18 panels as desired, tough hide, water and wear resisting, hand sewn, a really wonderful ball for 15/-; postage 6d. extra. Jerseys in all designs from 39/6 per dozen. Everything stocked for players and grounds. I stock the Original "**HOTSPUR**" **BOOTS** in half sizes, as supplied exclusively to Tottenham Hotspur F.C. and many League clubs. 22/6; postage 6d. **STEAM TARRED GOAL NETS** from 55/- set. Hockey, Boxing, and all organised games catered for. Gymnasiums fitted out complete. Catalogues and estimates from

7, Park Parade, Harlesden, N.W.10.

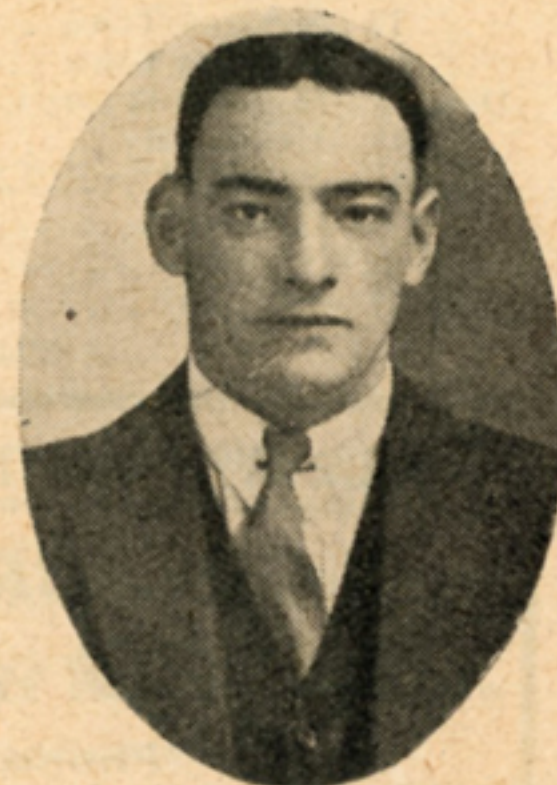
Nearest Station Willesden Junc., L.N.W. and Bakerloo Rlys. Harrow Road cars and bus service 18 pass the door.

'Phone Willesden 2878.



WM. MOLYNEUX.
(Half Back).

Second season. Of Wigan, where he used to get coal. Was with Norwich City as a boy when war broke out. Lured to Luton he quickly won his way into First XI., settling down at right half. Is strong player, but is not surpassed for equable temper and fairness, and thus a favourite with football crowds. Played in 39 League and Cup games last season. Is a gradely lad in every respect; 24; 5ft. 7ins.; 11½st.



THOMAS B. PARKER
(Half Back).

Third season. Kicked off at Carr Vale, Derbyshire. Left coal pit for Sheffield Wednesday 1914, but Territorials claimed him. Snapped up by Luton soon after Peace was declared, and played as left half. Last season reverted to centre-half. Very fast, rare tackler, with abundant energy, and clever feet. Last season played in 38 League and Cup games. Is 27; 5ft. 9ins.; 12st.

Luton Town F.C. 1st XI. Fixtures, 1921-22.

| DATE | OPPONENTS | GROUND | GOALS | | DATE | OPPONENTS | GROUND | GOALS | |
|---------|------------------|--------|-------|--------|---------|-------------------------|--------|-------|--------|
| | | | For | Ag'st. | | | | For | Ag'st. |
| 1921 | | | | | 1921 | | | | |
| Aug. 27 | Norwich City | A.. | 0 | 3 | Dec. 31 | Gillingham | H.. | 5 | 0 |
| " 29 | Mon.—Southampton | H.. | 1 | 1 | 1922 | | | | |
| Sept. 3 | Norwich City | H.. | 4 | 0 | Jan. 7 | F.A. Cup, 1st Round— | | | |
| " 5 | Mon.—Southampton | A.. | 1 | 1 | | (Birmingham) | H.. | 2 | 1 |
| " 10 | Newport County | H.. | 2 | 2 | " 14 | Gillingham | A.. | 0 | 0 |
| " 14 | Wed.—Exeter City | H.. | 3 | 0 | " 21 | Reading | A.. | 1 | 0 |
| " 17 | Newport County | A.. | 0 | 2 | " 28 | Reading | H.. | 6 | 0 |
| " 24 | Plymouth Argyle | H.. | 1 | 1 | Feb. 4 | Bristol Rovers | A.. | 0 | 5 |
| Oct. 1 | Plymouth Argyle | A.. | 0 | 1 | " 11 | Bristol Rovers | H.. | 0 | 1 |
| " 8 | Merthyr Town | H.. | 1 | 0 | " 18 | Brentford | A.. | 0 | 1 |
| " 15 | Merthyr Town | A.. | 1 | 4 | " 25 | Brentford | H.. | 2 | 0 |
| " 22 | Portsmouth | H.. | 2 | 2 | Mar. 4 | Aberdare | *A | | |
| " 29 | Portsmouth | A.. | 0 | 3 | " 11 | Aberdare | *H | | |
| Nov. 5 | Southend United | H.. | 4 | 0 | " 18 | Brighton & Hove | H.. | 3 | 2 |
| " 12 | Southend United | A.. | 1 | 1 | " 25 | Brighton & Hove | A.. | 1 | 1 |
| " 19 | Swansea Town | H.. | 3 | 0 | Apr. 1 | Watford | H.. | 1 | 0 |
| " 26 | Swansea Town | A.. | 1 | 1 | " 8 | Watford | A.. | 0 | 1 |
| Dec. 3 | Brighton (F) | A | | | " 14 | Good Friday—Q.P. Ran. | A.. | 1 | 4 |
| " 10 | Exeter City | A.. | 0 | 1 | " 15 | Charlton Athletic | *H | | |
| " 17 | Millwall | H.. | 0 | 0 | " 17 | Easter Monday—Q.P. Ran. | H.. | 2 | 1 |
| " 24 | Millwall | A.. | 0 | 0 | " 22 | Charlton Athletic | *A | | |
| " 26 | Swindon | A.. | 1 | 9 | " 29 | Northampton | A.. | 0 | 1 |
| " 27 | Swindon | H.. | 2 | 0 | May 6 | Northampton | H.. | 3 | 1 |

The figures denote results last season, the first figure being Luton's. *New Clubs.

ALWAYS "IN THE FORWARD LINE."

J. W. GREEN'S
NOTED LUTON ALE

'Phone: Luton 122.

That "Delightful Beverage."

FREE DELIVERY IN THE
NEIGHBOURHOOD FROM
THE BREWERY, LUTON.

Prices on Application.

Keep your hair on!

Use Cocker's
Emulsified Cocoanut Oil.

An extra good shampoo.

Price 1/6 per bottle.

WHEN YOU ARE RUN DOWN
and want "bucking up"—take

FOSFO TONIC.

Made by H. E. Cocker.

Price 1/3 and 2/3 bottle.

H. E. COCKER, M.P.S.,

Pharmaceutical Chemist,

**KENILWORTH PHARMACY,
DUNSTABLE ROAD, LUTON**

(Corner of Kenilworth Road).



ARTHUR ROE
(Half Back).

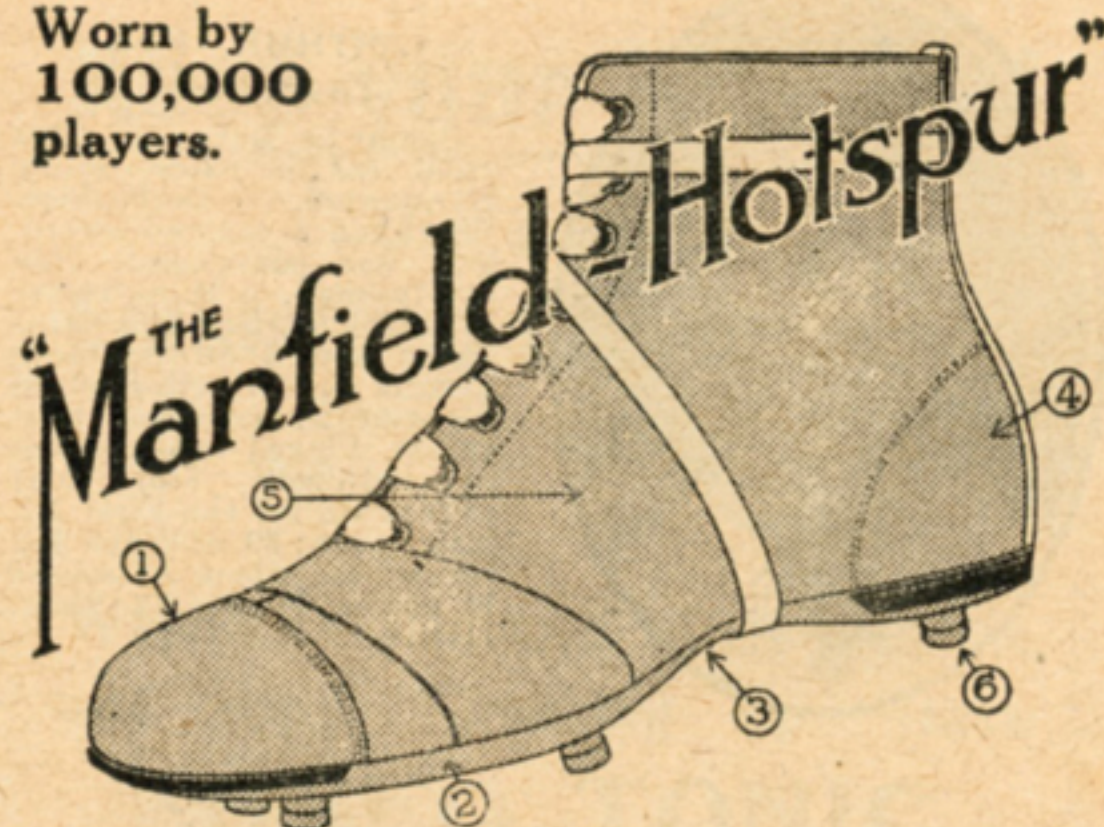
Came to Luton in 1914 from native place—South Normanton, Derbyshire. Was then a centre-forward, but has developed into utility man. More clever than robust in style. Has thrice played for Southern League or South-Eastern League in representative games. Played seven games as half-back and four as forward for the First XI. last season; 39 with the Reserves, for whom he scored 14 goals. Is 25; 5ft. 9ins.; 11½st.

JAS. R. WALKER.
(Half Back).

Recruit secured after trial at end of last season. Native of Port Glasgow, played with juniors of that place and Kilbarchan Athletic; captained latter. A brainy player, delighted critics in his games with Town and Town Reserves. Preferred Luton to Kilmarnock and W. Hartlepool. Is 25; 5ft. 8ins.; 11st.



Worn by
100,000
players.



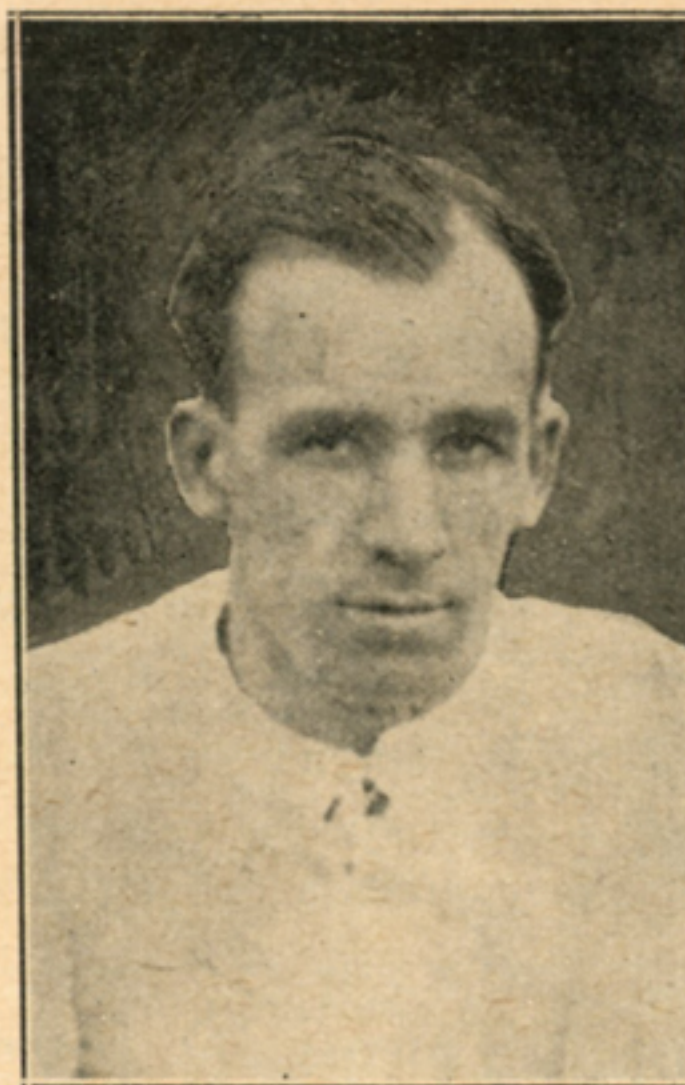
1. Solid butt toe, non-kinking.
2. Rounded sole to edge prevents mud-clogging and smartens action.
3. Waist arch of strength and spring.
4. Bevel-edged stiffener fits snugly and protects heel.
5. Hand-curried Russet Butt Leather, waterproof and supple, as used in no other boot.
6. Lock-rivett studs, placed for most grip and support.

AS PROOF OF ITS SUCCESS, the MANFIELD-HOTSPUR is the most imitated Football Boot ever made.

AS WITNESS TO ITS SUPREMACY, it is the chosen boot of the principal clubs of the world, whose players are surely judges of the BEST!

PRICE 22/6
from 59 & 60, ST. PAUL'S
CHURCHYARD, E.C.4
or any Manfield Branch or Agency.

Manfield
& SONS LTD



ERNEST SIMMS (Centre Forward).

Seventh season. Born at South Shields. Record goal scorer in first class football with 40 goals in London Combination games in 1916-17. Top goal-scorer with 12 in 1919-20; and top goal-scorer in Third Division with 29 last season; also scored 5 goals in Cup-ties. Reserve for England against Scotland and Wales last year; had successful benefit. Is 28; 5ft. 9ins.; 11½st.

== Central ==
Restaurant,
20, 22 & 24, CHEAPSIDE,
LUTON.

Quick Service. Popular Prices.

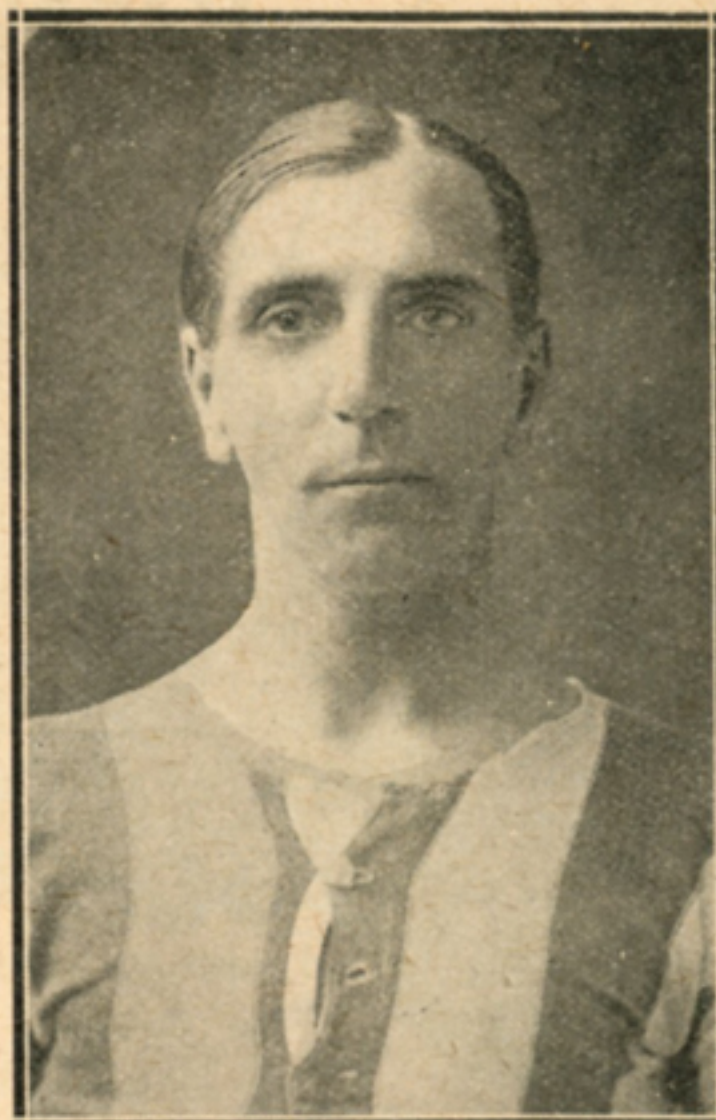
*The largest and most up-to-date
— Restaurant in Luton, with —
seating accommodation for 200.*

Football Teams & Parties
ESPECIALLY QUOTED FOR.

Headquarters of the Luton Clarence F.C.

*Established
50 Years.*

Proprietor: S. G. PRIMETT.



EDWARD JOHN BASSETT (Outside Right)

Recruit from Watford. An experienced player his early rise was rapid, in four seasons making steps of Metrogas, Newark, Millwall, Notts County. Then to the war, and when demobilised transferred to Watford. The general dispersal of the Watford side found him anxious to come to Luton. Is fast and tricky; 28 years; 5ft. 7ins.; 10½st.



HARRY PARSONS

**AT YOUR
SERVICE.**

Whether you are
in need of

FOOTBALL or

SPORTS ATTIRE

or Every-day Wearing
Apparel, you are sure
of Personal Service
and Best Value.

Height 5ft. 9in. Weight 11 stone.
"GOOD ALL-ROUND MAN."

SUITS TO MEASURE - - - FROM £3 18 0
DON'T FORGET YOUR OVERCOAT!

18, Manchester St., Luton.



**HERBERT SAMUEL JEPHSON (Inside
Right).**

Recruit. A Wolverhampton lad, started with Parkfields F.C., played in Inter-League matches. Went to France with N.M. Division 1915 and remained till Armistice. One of unbeaten 46th N.M. Division team, which beat France 4-1 at Auteuil. Demobilised joined Sunbeam Motors F.C., scoring 15 goals in 11 matches. In 1919-20 scored 48 goals, and last season 28, although half-season was half-back. Possesses many gold medals. Had many good offers from other clubs, but preferred Luton for personal reasons. Is 25; 5ft. 7ins.; 10½st.

RUBBING WITH
ELLIMAN'S
EASES PAIN



Elliman's Universal Embrocation
for

| | | |
|-------------------------------|---------------------|--------------------|
| <i>Rheumatism,</i> | <i>Sciatica,</i> | <i>Chilblains,</i> |
| <i>Sore Throat from Cold,</i> | <i>Sprain,</i> | <i>Backache,</i> |
| <i>Neuralgia from Cold,</i> | <i>Slight Cuts,</i> | <i>Bruises,</i> |
| <i>Cold at the Chest,</i> | <i>Cramp,</i> | <i>Stiffness</i> |

ELLIMAN, SONS & CO., SLOUGH, ENGLAND



LOUIS BOOKMAN
(Outside Left).

Third season. Native of Dublin, played with Dublin Adelaide, Belfast Celtic, Bradford City, West Bromwich Albion, before coming to Luton. Member of Irish International Championship team in 1913, when he was only 19. Is remarkably fast and tricky. Has played for Ireland at cricket. Always a gentleman. Is 27; 5ft. 6½ins.; 10½st.

ALLAN MATHIESON
(Inside Left).

Second season. Belfast born, came to Luton after doing seven years with an Ulster Regiment. Had played in Glentoran's Irish Cup winning team. A born dribbler, he has few superiors in ball manipulation, and is a powerful shot. Gained International cap last season against Wales. A little misfortune last season enforced two months' holiday, but scored 11 goals. Is 23; 6ft.; 13st.





"His Master's Voice"

FROM
£7 : 10

The supremacy of "His Master's Voice" marks it the greatest of all musical instruments.

SOLE AGENTS:

S. FARMER & CO.,
Wellington St. & George St.



"His Master's Voice"

TO
£125
(ELECTRIC)



SIDNEY HOAR
(Outside Left).

Seventh season. Son of Leagrave, arrived at Luton Town in 1913-14 by way of Toddington, Leagrave, and Luton Clarence, as an outside left, crossed to right wing two seasons ago after service in the Army. Speedy, tricky, centres well. Scored six goals last season. Gets benefit in October. Is 26; 5ft. 8ins.; 10½st.

HARRY HIGGINBOTHAM
(Inside Forward).

Third season. A Glaswegian, came to Luton at end of 1920 via South Shields. Had previously played for Scottish clubs. A fearless forward, clever in passing, dribbles well, and can shoot when he likes. Scored 6 goals in League and Cup ties last season. Is 5ft. 11ins.; weighs 12½st.



W. BELL & SON,

TAILORS AND - -
BREECHES MAKERS.

40 YEARS'

practical experience
- embodied in the -
Cutting and Making
of our Garments.

We cordially invite you to
see them in the making

Chapel St., Luton.

Established 1882. - - - Phone 403.

AT YOUR SERVICE.



GEORGE BUTCHER
(Inside Forward).

Second season. A Londoner born, but learned the game at St. Albans before joining West Ham United. Stayed there 10 seasons, transferred to Luton last January. Rather small and light, but very tricky. Scored six goals in League and Cup ties last season. Keeps fit by boxing. Is just over 30; 5ft. 6ins.; 10st.



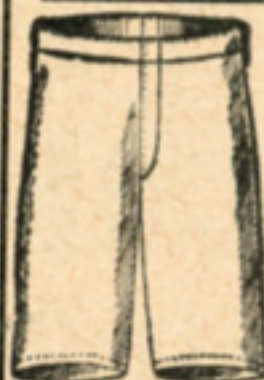
HILTON SIDNEY
(Outside Left).

Second season. Native of Horden, played with the Athletic of that place, and joined Luton last season about the same time as his fellow townsman and club-mate Walsh. Is on the light side. Fast and tricky. As understudy to Bookman he did not get many chances last season, but has still time to develop. 24; 5ft. 6ins. 10½st.

JACK SHARP

(International—Football and Cricket Teams.)

EXPERT SPORTS OUTFITTER.



JERSEYS.

Jack Sharp has thousands of Jerseys in stock. Write for Illustrated Catalogue with coloured designs—post free—it will pay you. From 39s. per doz.



STOCKINGS.

18s., 28s. 6d., and 40s. doz. pair.

KNICKERS.—White or Navy.

3s. 3d. & 3s. 9d. per pair; post 6d. extra. 37s. 6d. & 42s. per doz.



The "EXPERT" Football.

Used by Liverpool, Everton, Chelsea, Manchester United, Fulham, Swansea, Plymouth Argyle, Crystal Palace, Exeter City, and many of the leading Teams. Played with in English Semi-Final and Final Cup Ties. 24s. each.

Only the best Bladders used and finest Hides that can be obtained. Other makes—WATERTITE, 22s. 6d.; FINAL, 19s. 6d.; IDEAL, 16s. 6d.; RIVAL, 13s. 6d.

Post 9d. extra.



FOOTBALL BOOTS.—Shape, Style and Quality recommended. 13s. 6d., 15s. 6d., 17s. 6d. and 22s. 6d. Post 1s. extra.

WRITE NOW FOR CATALOGUE, POST FREE.
Jack Sharp's experience is at your service.

38, Whitechapel, Liverpool



WM. LAWSON (Trainer).

For 28 years has been associated with Luton Town. Started as a goal-keeper, but did not like the job. Trainer to reserve team in 1893-4; full responsibility in 1896. Is 55, but feels about 25. Has been on the cinder track and fought in the "squared circle." As an expert masseur has achieved remarkable results both in the football world and private life. Is always happy and held in highest esteem by everybody.



H. DAY (Groundsman).

Second season. More we see of him the better he is liked. Has made the ground one of the best playing pitches in the country, and is so methodical and orderly that he has a place for everything, and everything in its place.

THE "DUJON" RESTAURANTS.

GOOD QUALITY.
:: COMFORT. ::
GOOD SERVICE.

Special Quotations given to Football
Teams.

54, George Street, LUTON
AND
34, High Street, BEDFORD.

Luton Town Reserves Fixtures, 1921—22.

| | | |
|-------|---------------------------------|---|
| 1921. | | |
| Aug. | 27—Norwich City | H |
| Sept. | 3—Norwich City | A |
| " | 7—Boscombe | A |
| " | 10—Bristol City | A |
| " | 17—Bristol City | H |
| " | 24—Plymouth Argyle | A |
| Oct. | 1—Plymouth Argyle | H |
| " | 8—Southend United | A |
| " | 15—Boscombe | H |
| " | 22—Portsmouth | A |
| " | 29—Portsmouth | H |
| Nov. | 5— | |
| " | 12—Luton Clarence (F.) | H |
| " | 19—Bath City | A |
| " | 26—Bath City | H |
| Dec. | 3—West Ham (F.) | H |
| " | 10—Exeter City | H |
| " | 17—Southampton | A |
| " | 24—Southampton | H |
| " | 26—Swindon | H |
| " | 27—Swindon | A |
| " | 31—Gillingham | A |
| 1922. | | |
| Jan. | 7—West Ham (F.) | A |
| " | 14—Gillingham | H |
| " | 21—Reading | H |
| " | 28—Reading | A |
| Feb. | 4—Bristol Rovers | H |
| " | 11—Bristol Rovers | A |
| " | 18—Clapton Orient (F.) | H |
| " | 25—Clapton Orient (F.) | A |
| Mar. | 4—Luton Amateurs (F.) | H |
| " | 11— | |
| " | 18—Brighton & Hove | A |
| " | 25—Brighton & Hove | H |
| " | 27 (Monday.)—Millwall | A |
| Apr. | 1—Watford | A |
| " | 8—Watford | H |
| " | 14 (Good Friday)—Guildford | H |
| " | 15—Charlton Athletic | A |
| " | 17 (Easter Mon.)—Guildford | A |
| " | 18 (Easter Tues.)—Southend Utd. | H |
| " | 22—Charlton Athletic | H |
| " | 26—Millwall | H |
| May | 6—Exeter City | A |



The 'Riley' Guarantee ensures satisfaction.

"We guarantee to replace or refund the money paid for any article which fails to give satisfaction when received, or proves defective after reasonable usage."

This guarantee enables you to send your order with every confidence, knowing that satisfaction is assured.

RILEY'S OF ACCRINGTON

Everything you require for the game of Football—Jerseys, Knickers, Footballs, Stockings, Nets, Posts, etc., can be had from "The Premier Sports House," together with the necessities for all other winter sports.

Riley's have an enviable reputation all over the world for all sports requisites, and no article is sent out which might injure this reputation.

FREE. Write to-day for Riley's Winter Sports Catalogue

E. J. RILEY Ltd., Hill Sports Works, **ACCRINGTON**

Bedfordshire Football Association.

THE season of 1920-1921 created a membership record. 146 clubs, 10 competitions, and 126 referees were registered. No fewer than 79 clubs entered the County Junior Cup competition, whilst 16 took part in the Senior Cup. Luton Clarence, by beating Luton Fricker's Athletic, again won the Senior trophy, whilst Leighton Ivy Leaf won the Junior Cup, beating Bedford Lynton Works at Woburn. The matches in the Southern Counties Championship resulted as follow:

v. Berks and Bucks at Luton, lost 1-6.

v. Oxfordshire at Bedford, draw 1-1.

v. Hertfordshire at Hitchin, won 4-0.

The Officers of the Association are:

President: Mr. E. Lyonel Finch, Bedford.

Vice-Presidents: Mr. C. Green, Luton, Mr. E. Humphreys, Bedford, Mr. C. H. Ridgway, Leighton Buzzard.

Auditors: Messrs. G. Wistow Walker and S. Moody, Luton.

Council: Mr. Edgar Wood, Biggleswade, Mr. T. Merrall, Bedford, Mr. H. Eaton, Bedford, Mr. A. J. Darby, Dunstable, Mr. J. V. Vass, Luton, Mr. F. E. Hawkes, Luton.

The number of members of the Council will be increased to ten at the election by the clubs in August. The present personnel may also be changed at this election.

LEAGUES AND SECRETARIES.

Bedford Combination (1919). T. Merrall, 17, Bridge Road, Bedford.

Bedford and District Thursday League (1906). W. J. Baker, 19, Cromwell Road, Bedford.

Bedford and District Thursday Cup (1908). W. J. Baker, 19, Cromwell Road, Bedford.

Biggleswade and District League (1908). Edgar Wood, Biggleswade.

Leighton and District Cup (1913). T. Bunker, Rosebery Avenue, Leighton Buzzard.

Leighton and District League (1908). H. F. Hopkins, 37, South Street, Leighton Buzzard.

Luton and District League (1898). J. Vass, 45, Chapel Street, Luton.

North Beds Charity Cup (1907). Edgar Wood, Biggleswade.

South Bedfordshire League (1919). F. E. Hawkes, 6, Cumberland Street, Luton.

LIST OF AFFILIATED CLUBS.

Amphill Town. A F. G. Hollis, 43, Dunstable Street, Amphill. B Amphill Park. C Green.

Aspley Guise. A Oscar R. Watson, Mount Pleasant, Aspley Guise, Beds. B The Common. C Navy blue.

A.R.S. (Henlow). A O/C. H. W. Sylvester, Hut 5, A.R.S., Henlow Camp, near Biggleswade. B Henlow Aerodrome.

**Headquarters Luton and
District Football League.**

Hallett's
Commercial Hotel

Proprietor—F. A. HALLETT.

Formerly the —
“Thrift” Dining Rooms,

Stuart Street, Luton.

DINNERS and TEAS

A SPECIALITY.

Very Moderate Terms.

Good Accommodation for Cyclists.

Arlesey. A E. G. Albon, 4, Avondale Terrace, Arlesey.
Barton Rovers. A H. J. Mason, The Laurels, Barton.
Bedford Amalgamated. A S. Taylor, 20, Offa Road, Bedford. B Russell Park. C Black and white stripes.
Bedford Banks. A R. G. Locke, 18, Grafton Road, Bedford.
Bedford Britannia Works. A G. A. Armstrong, 34, Gwyn Street, Bedford.
Bedford Celtic. A J. H. Coxan, 8, Trinity Road, Bedford.
Bedford Clarence (Thursday). A A. E. Rose, 22, Harpur Street, Bedford. B Russell Park. C Blue body, white V.
Bedford Forder's Pilling Works. A W. T. Ellis, Wootton Pilling, near Bedford. C Black and white stripes.
Bedford Igranic. A W. G. Ward, 23, Firbank Road, Bedford. B Firbrampton Field. C Red.
Bedford Ivy Leaf. A A. B. Poulter, 30, Ashburnham Road, Bedford. B Three Tuns, Biddenham. C Green and yellow.
Bedford Lynton Works. A W. Barley, 90, Honey Hill Road, Bedford. B Bedford Parks. C Blue (navy).
Bedford Melrose. A T. Marshall, 28, Kempston Road, Bedford. B Goldington Road. C Black and white stripes.
Bedford Midland Athletic. A H. A. Brummell, 5, Cromwell Road, Bedford.
Bedford Queen's. A J. Giles, 47, Preston Road, Bedford.
Bedford Queen's Park Rangers. A P. H. Clarke, 13, Harpur Street, Bedford.
Bedford Rovers. A A. Barrett, 48, Park Road West, Bedford. B Russell Park, Bedford. C Claret and blue.
Bedford Southend United. A E. L. Denton, 67, Southville Road, Bedford. B Public Parks. C Blue and white stripes.
Bedford Southend W.M. Club. A F. J. Darvill, Southend Club, Millbrook Road, Bedford.
Bedford St. Cuthbert's Junior. A R. J. Brawn, 69, Denmark Street, Bedford.
Bedford Town. A E. W. Taylor, 108, Howbury Street, Bedford. B Ford End Road, Queen's Park. C Red shirts.
Beeston United. A J. E. Cross, 3, Council Cottages, Beeston, near Sandy.
Biddenham Juniors. A H. Smith, Ivy Cottage, Biddenham, near Bedford.
Biggleswade and District. A Tom Ferguson, Blunham House, Biggleswade. B Fairfield Road. C Green.
Biggleswade Lads' Life Brigade. A S. Millard, 9, Have-lock Road, Biggleswade.
Biggleswade W.A.R. A C. Gillett, 19a, Cauldwell Street, Bedford. B London Road, Biggleswade. C Red.
Caddington. A S. Mills, The Green, Caddington.
Caldecote. A G. Darnell, Caldecote Road, Biggleswade.
Campton. A W. H. Lamb, Campton Bury, Shefford, Beds.
Chalton. A W. Bonner, “The Knapps,” Leagrave.

CHARNLEY — & SONS —

are Members by Examination
of the British Optical
Association.

Sight Testing.
Spectacle Fitting.
= Repairs. =

Oculists' Prescriptions made up.

HOURS : 9.30 to 1. 2.30 to 7.

15, Wellington Street,
LUTON.

Clapham. A F. O. Brimley, 4, Lime Street, Bedford.
Clifton. A G. Harwood, White House, Clifton.
Cople United. A P. Davidson, 4, Bedford Rd., Willington.
Cranfield. A C. F. Salisbury, Old George House, Cranfield, near Woburn Sands. B Cranfield Court Farm. C Red.
Dunstable Bagshawe's. A E. S. Sanders, 87, High Street, Dunstable.
Dunstable Celtic. A O. Smith, Garden Road, Dunstable.
Dunstable Christ Church Institute. A H. Walker, 73, King Street, Dunstable.
Dunstable Rovers. A G. Hudson, 61, Waterlow Road, Dunstable. B Kingsbury Farm (Church Street Station).
Dunstable St. Peter's. A H. Duncombe, 73B, Church Street, Dunstable. B Half Moon Hill. C Claret and Blue.
Dunstable Wesleyans. A , Dunstable.
C White with blue V.
Dunstable Waterlow's. A W. W. Goodyear, c/o Messrs. Waterlow's, Ltd., Dunstable.
Dunton. A A. Chessum, Boot Lane, Dunton, Biggleswade.
Eaton Bray. A H. Hebbes, High Street, Eaton Bray, Beds.
Eaton Socon. A F. W. Bass, Eaton Socon, near St. Neots.
Elstow United. A Arthur G. Hulatt, Church End, Elstow.
Flitwick. A C. Crisp, Windmill Road, Flitwick Beds.
Girtford Rovers. A J. Minhall, Girtford Crossing, Sandy.
Goldington. A E. W. Brewer, "Somerville," King Edward Road, Goldington, Bedford.
Gravenhurst. A G. Brewer, Upper Gravenhurst.
Harlington Rovers. A G. W. Harris, Sundon Road, Harlington, Beds.
Harrold United. A L. Seymour, Harrold, Beds.
Haynes United. A E. G. Stevens, Haynes, Beds.
Heath United. A L. J. Stevens, Heath Road, Heath.
Henlow. A P. H. Bywaters, High Street, Henlow, Beds.
Houghton Regis. A F. Collier, 5, The Green, Houghton.
Kempston Rovers. A F. Curtis, 32, Cater Street, Kempston.
Kempston Springfield Rangers. A L. J. Tysoe, 86, Margetts Road, Kempston, Beds.
Kempston United. A P. A. Guile, 19, St. John's Street, Kempston, Beds. C Black and amber.
Kensworth. A T. F. Kempson, Kensworth.
Langford. A S. J. Brown, 72, Hitchin Street, Biggleswade.
Leighton Buzzard and Linslade Athletic. A C. B. Stephens, c/o Barclay's Bank, Leighton Buzzard.
Leighton Ivy Leaf. A H. W. Neville, 79, North Street, Leighton Buzzard. B Lake Street. C Royal blue.
Leighton Morgan's Athletic. A W. L. Turney, "Ivy Dene," Rothschild Road, Linslade, Bucks.
Luton Amateurs. A R. K. Brown, Kenilworth Rd., Luton.
Luton Argyle. A A. E. Flemons, 1, Wenlock Street, Luton.
Luton Bailey Hill Brotherhood. A E. C. Bone, 53, Baker St.
Luton Beech Hill Old Boys. A E. Page, 77, Beech Road.



W. LACEY & SON,
CITY TAILORS,
14 WELLINGTON ST. 14
LUTON.

Luton Bury Park Institute. A R. C. Cox, 48, Highfield Rd.
Luton Bute Saw Mills. A F. J. Collins, 24a, Edward St.
Luton Ceylon Athletic. A D. Clark, 75, Stuart Street.
Luton Christ Church Institute. A W. A. Garrett, 99, Cambridge Street, Luton. B Stockwood Park. C White.
Luton Church Street Institute. A S. Beck, 10, Kimpton Rd.
Luton Clarence. A L. E. Hawkes, 22, Naseby Road.
Luton Clydesdale. A W. Webb, 30, Jubilee Street, Luton.
Luton Crusaders. A H. W. Wood, 29, St. Saviour's Cres.
Luton Davis Athletic. A A. McArthur, 23, Clifton Road.
Luton Excelsior. A F. Chandler, Lansdowne Road, Luton.
Luton Fricker's Athletic. A Robert S. Allen, c/o Fricker's Metal Co., Portland Road, Luton.
Luton G.N.R. Athletic. A P. Fensome, Station Master's Office, G.N.R., Luton.
Luton Glendale. A F. Lucas, 4, Ferndale Road, Luton.
Luton Granville Juniors. A F. Folks, 84, Albert Road.
Luton Harriers. A E. A. Abbott, 10, Portland Road, Luton.
Luton Havelock Athletic. A C. J. Biggs, 210, North Street.
Luton Ivydale United. A H. G. Preece, 207, North Street.
Luton Kent's Athletic. A W. G. Ireland, c/o Kent's Works.
Luton Kent's Boys. A E. Godfrey, 49, Highbury Road.
Luton Kershaw's. A R. W. Holdstock, 4, Holly Walk.
Luton M.R. Athletic. A E. Atkins, 55, Reginald Street.
Luton Melrose. A F. Wilson, 30, Queen Street, Luton.
Luton North Street Wesleyans. A H. A. Chambers, 117, Hitchin Road.
Luton Norton Rangers. A G. Poole, 100, Albert Road.
Luton Reliance United. A A. Custance, 18, Old Bedford Rd.
Luton Rosedale. A W. Janes, 119, New Town Street.
Luton Riverdale. A A. Coleman, 88, Langley Road, Luton.
Luton St. Mary's. A J. Wing, 18, Stockwood Crescent.
Luton St. Matthew's. A H. Wilding, 58, Ridgway Road.
Luton Town. A Chas. Green, 73, Hazelbury Crescent.
Luton United. A R. S. Cooper, 18, Tavistock Street, Luton.
Luton Victoria. A H. Wheeler, 41, High Town Rd., Luton.
Luton Waller Street Brotherhood. A F. C. Lambert, 42, Arthur Street, Luton. B Pope's Meadow. C White.
Marston. A W. Wright, The Morteyne Arms, Millbrook Station, near Ampthill. B Adjoining Millbrook Station.
Maulden Stars. A C. W. Sanders, Snow Hill, Maulden, near Ampthill.
Meppershall. A T. Ashton, Meppershall, near Shefford.
Potton Town. A W. W. Perry, Market Square, Potton.
R.A.F., Henlow. A Cpl. W. H. A. Hathaway, Orderly Room, R.A.F., Henlow, Beds.
Royal Airship Works (Shortstown). A A. L. Martin, 6, North Drive, Shortstown, near Bedford.
Sandy Albions. A H. W. Finding, Cambridge Road, Sandy.

(Continued on page 13).

ALBERT WARD'S

FAMOUS

FOOTBALL OUTFITS.

Don't Miss It! A.W.'s Catalogue, Post Free.
Coloured Illustrations of

Jerseys and Knickers

Immense Stock of above, also

Football Stockings, Boots, Goal Nets, &c.



FOOTBALLS! FOOTBALLS!

The Roundest, Soundest, and
most durable in the world.

Everything for Player and Club.

ALL GOODS PER RETURN.

53, Bradshawgate, BOLTON.

Luton Clarence

Fixtures, 1921—22.

| | |
|-------|------------------------------|
| 1921. | |
| Sep. | 3—KingstoniansA |
| " | 5— |
| " | 10—BarnetA |
| " | 17—Hampstead TownH |
| " | 19— |
| " | 24—Wealdstone (E.C.)A |
| Oct. | 1—BromleyH |
| " | 8—English Cup |
| " | 15— |
| " | 22— |
| Nov. | 5—GuildfordA |
| " | 12—Luton Town R. (F.)A |
| " | 19—ChelmsfordA |
| " | 26—St. Albans CityH |
| Dec. | 3— |
| " | 10—Amateur Cup |
| " | 17— |
| " | 24—EnfieldH |
| " | 26—Hampstead TownA |
| " | 31— |
| 1922. | |
| Jan. | 7— |
| " | 14—Amateur Cup |
| " | 21—MetrogasH |
| " | 28—St. Albans CityA |
| Feb. | 4—BarnetH |
| " | 11—CheshuntA |
| " | 18—GuildfordH |
| " | 25—MetrogasA |
| Mar. | 4—ChelmsfordH |
| " | 11—EnfieldA |
| " | 18—Sutton UnitedA |
| " | 25—SouthallH |
| Apr. | 1—BromleyA |
| " | 8—KingstoniansH |
| " | 14—SummerstownH |
| " | 15—SouthallA |
| " | 17—SummerstownA |
| " | 19— |
| " | 22—CheshuntH |
| " | 29—Sutton UnitedH |

Luton Amateurs

Fixtures, 1921—22.

| |
|-----------------------------|
| Hyde and KingsburyA |
| R.A.F. (Uxbridge)H |
| Hertford Town (E.C.)A |
| WealdstoneH |
| Fricker's AthleticH |
| Amateur Cup |
| Amateur Cup |
| LensburyA |
| R.A.F. (Uxbridge) |
| Harrow Weald.....H |
| LensburyH |
| L. & N.W. RlyA |
| Willesden TownA |
| Hyde and KingsburyH |
| Alston RangersA |
| L. & N.W. RlyH |
| Old LyoniansA |
| Harrow Weald.....A |
| Luton Town Reserves ...A |
| WealdstoneA |
| Alston RangersH |
| Willesden TownH |
| Fricker's AthleticA |
| Old LyoniansH |

BUSINESSES

For immediate disposal

Grocers. Bakers. Hardware.
Dairies. Fruiterers. Butchers.
Hairdressers. Licensed Houses
and Hotels. - Restaurants.
Greengrocers. Drapers. Jewellers.
- - - Tobacconists. - - -

*All kinds of Businesses disposed
of promptly.*

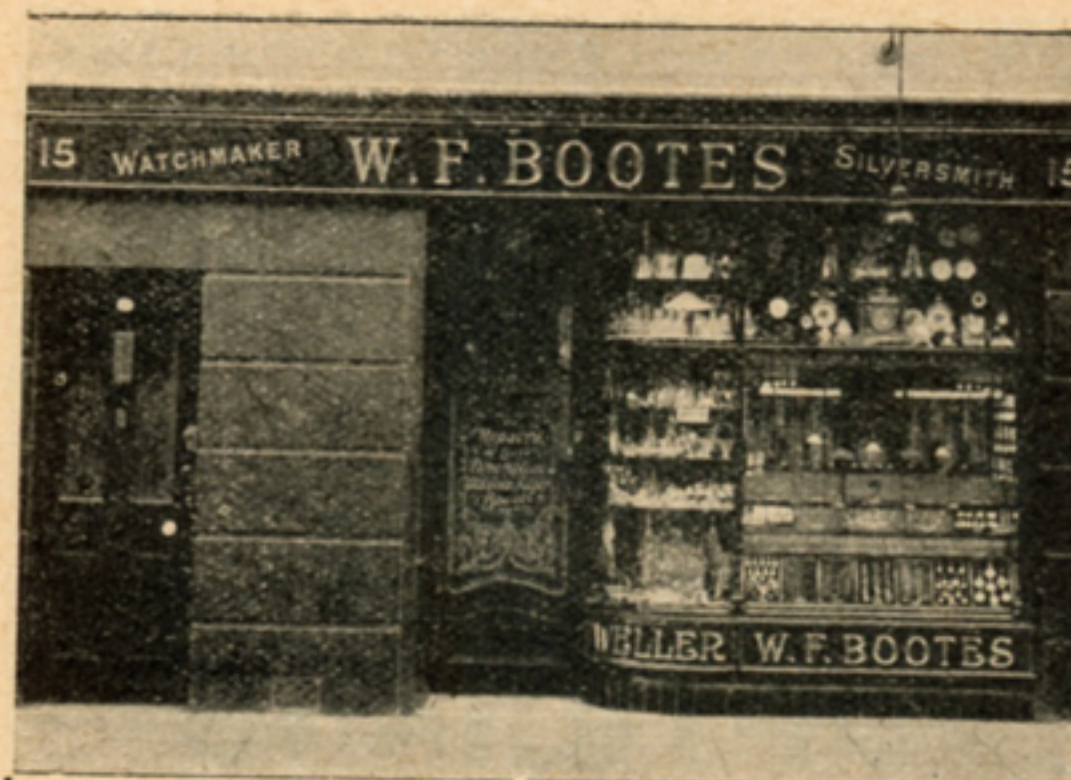
Call, write or 'phone—

W. L. HAWKINS

25, CHEAPSIDE, LUTON.

Branch Office - - 58, STUART STREET.

'Phone 883.



The Shop for Lucky Wedding
and Engagement Rings
in 9-18-22 Carat Gold.
All sizes kept in stock.

15, GUILDFORD ST.,
LUTON.

Wootton & Webb

THE
OPTICIANS



Market Place,
— Luton. —

'Phone 644.

Best Show of
Men's Overcoats
In the District.

Prices from **£1 17 6** up.

Raincoats from
29/6.

Blundell Bros. (Luton) Ltd.
CHEAPSIDE, LUTON.

Agents
for
"Aquascutum" Coats.

Youths' and Boys'
Overcoats from 30/-

Navy Serge Suits
to Measure.
INDIGO DYE

65/-

Mr. Club Secretary !

Your

JERSEYS

KNICKERS

STOCKINGS

BOOTS

DON'T
ORDER

until you
have seen

OUR GOODS.

Chas. — George Street
Mares also Dunstable Rd.