

THE LUTON NEWS

*Football
Handbook*

1922-1923



Still Leading !!

FOSTER BROS.
CLOTHING CO., LTD.

EVERYTHING In Men's
Youths' & Boys' WEAR.
Suits to order a speciality.

22, Market Place,
LUTON.

Over 100 other
Branches.

STRANGE'S

The Popular Drapers

Ladies' Raincoats
- our Speciality. -

Every Department
Up-to-date with
Latest Novelties and
**PRICES ALWAYS
RIGHT.**

Large and Choice
Selection of Autumn
and Winter Tweeds.

34, 36, 38, 40, 42, 44,
Wellington Street,
LUTON.

Phone ——— 191.



The Outlook.

"Will this season surpass last?" was asked in the introductory note last season. The answer in May last was in the affirmative, but it was not quite as satisfactory as we had anticipated. We finished in the fourth position of the League as compared with ninth in the previous season. The records were better on the whole, and yet we would have won the championship had there been sustained effort throughout the season as in the early stages.

We had our share of misfortunes and made our share of mistakes, but there were more bright days than dull hours, and the mysterious destruction of the grand stand by fire has seen the club rise to the occasion, and we begin the new season with as fine a stand as is to be found in the League.

We have parted with several good players, notably Simms, Bassett, Bookman and Mathieson, and two places at least will be hard to fill, but, on the whole, the full complement of players should be as good as last season, and if all pull well together we may achieve that promotion that is now the goal of every club. May it be so.

CLUB OFFICIALS.

Directors.

H. ARNOLD, Esq., J.P. (Chairman).
Messrs. W. J. ALLEN, P. A. EDWARDS, E. GIBBS,
E. MOUSE, H. SMART, W. SOPER, OSCAR HART,
STANLEY H. GODFREY.

The retiring directors, Messrs. W. J. Allen, E. Gibbs, and E. Mouse, will seek re-election at the general meeting in August.

AUDITOR.

THOS. KEENS, Esq., F.C.A.

Secretary:

CHAS. GREEN, 73, Hazelbury Crescent, Luton.

Colours: White jerseys, black knickers.

Ground: Kenilworth Road, Luton.



"BARBARIAN"
Regd.

Football

Boot



THE "BARBARIAN" Reg.

A man's boot for a man's game.
Keen players appreciate the
host of good points embodied
in this Super-Boot.

It is a combination of lightness
and durability.

Try your fitting at the nearest
F. H. & W. shop.

Other reliable brands at:—

MEN'S - 10/11, 12/9.

YOUTH'S - 8/11, 10/11.

BOY'S (11-1) - - 7/11.

To all clubs purchasing eleven
pairs and upwards we allow a
special discount of 7½ per cent.

*Solid leather
throughout.*

*Best Army Kip
uppers.*

*Butt leather un-
breakable toes.*

*First quality
leather soles,
bevelled edges.*

Price 15/9

Youth's (2-5) - 14/9

Freeman, Hardy & Willis, Ltd.

38, George Street, LUTON.

Last Season's Record.

The following particulars of last season will be useful:

THE LEAGUE: DIVISION III. (SOUTHERN SECTION).

Position in Table: 4.

	P	W	L	D	Goals		
					F	A	P
Home	21	16	3	2	47	9	34
Away	21	6	9	6	17	26	18
Totals	42	22	12	8	64	35	52

CUP TIES.

Home	1	1	0	0	2	1	—
Away	2	0	1	1	1	2	—

FRIENDLY.

Away	1	0	0	1	1	1	—
------	---	---	---	---	---	---	---

Grand total 46 23 13 10 68 39 —

PLAYERS' APPEARANCES.

LEAGUE.—The Town called upon only 20 players, but some of these have been played in two or three positions. Bailey was the only player to make the full possible appearances, 42, Tirrell 38, Lennon 37, Walker 34, Roe 32, Hoar, Bookman 31, Butcher, Higginbotham 28, Simms 26, Mathieson 25, Foster 21, Bassett, Molyneux 20, Reid 9, Millar 7, Walsh, Stephenson 5, Graham 2, Parker 1.—Total 442.

CUP TIES.—Bailey, Lennon, Tirrell, Foster, Walker, Roe, Bassett, Higginbotham, Simms, Butcher, 3 each; Bookman, 2; Hoar, 1.

FRIENDLY.—Bailey, Stephenson, Tirrell, Molyneux, Walker, Roe, Hoar, Higginbotham, Simms, Mathieson, Bookman.

GOAL SCORERS.

LEAGUE.—Simms 18 (one penalty), Higginbotham 12 (one penalty), Butcher 8, Mathieson 6, Hoar 6 (one penalty), Bassett 4, Reid, Walsh, Walker, Tirrell (one penalty) 2 each, Foster, Bethune (Brentford), through own goal.—Total 64.

HAT TRICKS.—Simms, 2 (against Exeter and Gillingham); Higginbotham (against Queen's Park Rangers).

CUP TIES.—Hoar, Higginbotham, Bassett.—Total 3.

FRIENDLY.—Higginbotham.

New Hudson Depot

FOOTBALLS



"Improved T" ...	24/6
"League King" ...	25/-
"Premier"	23/-
"Fanny Walden" ...	22/6
Regimental" ...	16/6
"Champion"	13/6
"Rival"	11/6
"Elite"	10/6



KNICKERS

With elastic tops and hip pockets.

Per Pr.
Men's.

White	2/3
"	2/9
"	3/3
"	3/11
Navy	2/6
"	3/-
"	3/6
"	4/2



This Ball supplied by us to the Luton Town F.C.

JERSEYS

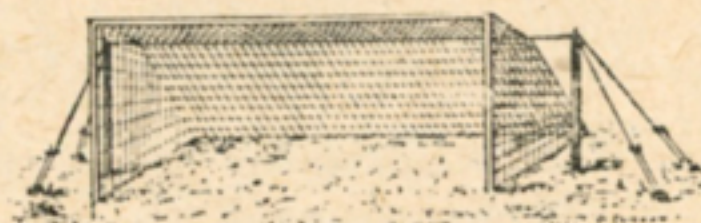
Prices
Per doz.

Mens, 32/6
to 58/6.

Manchester.
Men's, 38/6
to 52/6.

Aston Villa.
Men's, 35/-
to 50/-.

Bradford.
Men's, 38/6
to 46/-.



Write
for
Price
List.

Write
for
Price
List.

FOOTBALL GOAL NETS

Post
Free.

Hemp Cord, Steam Tarred	
Waterproof	£5 5 0
Strong Laid Hemp, Steam	
Tarred	£4 5 0

Post
Free.

10, 12, CHAPEL STREET, LUTON.

TOWN RESERVES.

SOUTHERN LEAGUE.

Position in complete table: 8.

	P	W	L	D	Goals F	A	P
Home	18	13	3	2	38	13	28
Away	18	4	12	2	12	41	10
Total	36	17	15	4	50	54	38

BEDS INVITATION CUP. (Winners.)

Home	1	1	0	0	5	0
Away	1	1	0	0	3	1
Total	2	2	0	0	8	1

FRIENDLIES.

Home	4	3	1	0	11	4
Away	2	0	1	1	2	5
Total	6	3	2	1	13	9

Grand total 44 22 17 5 71 64

PLAYERS' APPEARANCES.

The principal appearances are:—Sidney 38, Jephson, Dormer 37, Gibbon, Hull, Graham 36, Millar 35, Stephenson 34, Walsh 30, Molyneux 17, Bassett 16, Parker 14, Mathieson 13, Foster 10, Butcher, Woodcroft 7, Reid 6, Clarke, Hall, Bird, Turpin 5.

Fifty players in all have been called upon, and several local lads have filled eleventh-hour gaps with credit.

GOAL SCORERS.

Stephenson 10 (9 penalties), Jephson, Mathieson 9, Dormer 7, Reid 6, Walsh 5, Barrett, Butcher, Sidney 3, Clarke, Jenkins, Lee, Millar, Turpin 2, Bassett, Hall, Kirk, Nesbit, Woodcroft, Pearson 1.—Total 71.



ALEC. WATSON'S LTD.

FAMOUS

"Perfection" Football

ENGLAND'S BEST 12-PANEL BALL.

As used in English Cup Final, International Matches, also by Manchester City, Stoke, Oldham Athletic, Manchester United, Southend United, etc.

Prices:

BEST COWHIDE, 21/- DURAFLEX WATERPROOF, 22/6
TUPHINE WATERPROOF, 22/6

Post Free.

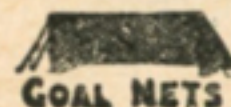
Best Leather and Perfect Shape Guaranteed.

The great increase in the sales of this ball last season is testimony to its superiority over other makes.

FOOTBALL JERSEYS.

	Youths'	Men's
Selbs	28/- to 33/-	30/- to 51/- doz.
Stripes	28/- to 54/-	30/- to 66/- doz.
M.U.	33/- to 39/-	36/- to 42/- doz.
Villa	30/- to 36/-	33/- to 51/- doz.
City	36/-	39/- do.
Halves	30/-	33/- to 51/- doz.

Post Free.



KNICKERS, HOSE, SWEATERS, BAGS,
GOAL NETS BOOTS, etc., ——— at Low Prices.

WRITE TO-DAY for 1922/23 Football Catalogue (with coloured Jersey sheet) post free from (Head Office)—

39, Piccadilly, Manchester.

Men who have Played for Luton

Since it adopted Professionalism.

1891-2: J. Burley; Sanders, Hoy; Wright, Paul, Taylor, E. H. Lomax; F. K. Whitby, Deacon, C. Lomax, Oclee, H. Whitby, Cheshier.

1892-3: Burley, T. Read; Sanders, Hoy, George, Wilson; Wright, Julian, Taylor, Watkins; Brown, Cheshier, Allen, H. and F. Whitby, Barbour, Galbraith, J. McKenzie, Kirk.

1893-4: Bee; Cheshier, Wilson, C. Reed; Watkins, Julian, Taylor; H. Whitby, Allen, Galbraith, Finlayson, Vickers, J. Dimmock, Brown, Hayes.

1894-5: Bee; Cheshier, M. D. Nicholson, McEwen, Watkins, McCrindle, Howe, Collins; Brown, Gallacher, Galbraith, Prentice, Allen, Dimmock, Jack.

1895-6: Jack Russell, Williams; Stirton, M. D. Nicholson, McCartney, McEwen; Watkins, Stewart, Docherty; Gallacher, Finlayson, Galbraith, Parkinson, Birch, Ekins, Coupar, Dimmock.

1896-7: Williams; Davies, McCartney, McEwen; Perrins, Stewart, Docherty, Watkins; Gallacher, Finlayson, McInnes, Galbraith, Birch, Coupar, Ekins, Dimmock, Brown.

1897-8: Williams; McCartney, McEwen; Davies, Stuart, Docherty, Perrins; Gallacher, Coupar, Birch, Clarke, Donaldson, Little, McInnes, Ekins, Durrant.

1898-9: Perkins; H. Williams, Moore, Dow; C. Ford, Clark, Sharp, Crump; Durrant, Hewitt, W. Ford, Kemplay, Draper, McInnes, Brock, Ekins.

1899-1900: Daw; Dow, McCurdy; Morrison, Stewart, Brown, Williams, Rally; Inglis, Brock, Fairgrieve, Draper, McInnes, Eckford.

1900-1: Monks; Ord, Lindsay, McCurdy; Clifford, Holdstock, Williams, Cox; Brown, Blessington, Molyneux, Burbage, Dempsey, Tierney, Saxton, Durrant.

1901-2: Ord; Lindsay, Sharp, Street; F. Hawkes, White, Williams, R. Hawkes; Durrant, Blessington, Brown, Barker, Tierney, Colvin.

1902-3: Frail; Lindsay, Sharp, Hood; F. Hawkes, White, Williams, R. Hawkes; Durrant, Blessington, Hilsdon, Moody, Davidson, Gall, Allsopp.

1903-4: Thompson; Bennett, McEwen; F. Hawkes, White, R. Hawkes, Williams; Durrant, Eaton, McKee, Storey, Moody, Allsopp, Griffiths, Madden.

'Phone 223.

Est. 1860

GET YOUR

MANFIELD-HOTSPUR FOOTBALL BOOTS

FROM

H. WHITE

AS PROOF OF ITS
SUCCESS the **MANFIELD
HOTSPUR** is the most
imitated Football Boot ever
made.

**Worn by 100,000
Players.**

**Price
20/-**



**AS SUPPLIED BY US
TO THE LUTON TOWN
F.C. Again This Season**

26/30, Manchester St., Luton

1904-5: Lindsay; Turner, McEwen, J. Dow; F. Hawkes, White, R. Hawkes, Pritchard, Williams; Eaton, Ross, Lamberton, Penman, Moody, Wallace, Barnes.

1905-6: Platt, H. Farr; Blackett, McCurdy, J. Dow, Else, Watkins; F. Hawkes, White, R. Hawkes, Gallacher; Warner, Macdonald, Brown, E. Dobson, Pickering, Barnes, Latheron.

1906-7: Platt; Hogg, Jackson, McCurdy; F. Hawkes, White, R. Hawkes, Jones, Gallacher, Warner, Schofield, Macdonald, Brown, Murphy, E. Dobson, Gittins, Pickering, Barnes, Fitzpatrick, Latheron.

1907-8: Platt, Jarvis; Hogg, Nicholson, Dimmock, McCurdy; F. Hawkes, Jones, White, R. Hawkes; Rankin, Walders, Rigate, Hall, Brown, Pearson, Farrant, Moody, Latheron.

1908-9: Platt, Jarvis; Dimmock, McCurdy, Gregory, Chapman; F. Hawkes, Jones, R. M. Hawkes, White; Brown, Rigate, Haycock, Menzies, Bradley, Stansfield, Moody, Johnson.

1909-10: Jarvis, Fry; Hedley, McCurdy, Chapman, Rayner, Ruffett, Potts; F. Hawkes, Jones, R. M. Hawkes, Slennett, Trueman; Brown, Quinn, Smith, Moody, Stansfield, Johnson, Divine, Moore, Porter, Schofield.

1910-11: Naisby, Jarvis; Wightman, Chapman, Potts, Webb, J. Ashton, C. Watson; F. Hawkes, Bushell, R. M. Hawkes, Johnson; Brown, Quinn, Walker, Smith, Stephenson, Moody, Lashbrooke, Stansfield.

1911-12: Naisby; Wightman, Potts, Ashton, A. Brown; F. Hawkes, Bushell, R. M. Hawkes, Brown, Walker, Stephenson, Moody, Stansfield, Johnson, Shepherd, Walden, Lashbrooke, Streeton.

1912-13: J. W. Day, R. Abbott, H. Bateman; C. G. Henderson, E. J. Potts, J. Jarvie; F. Hawkes, S. Thompson, T. T. Wilson, R. M. Hawkes; J. Stephenson, A. H. Wileman, W. Smith, J. Murphy, B. Holland, T. Streeton, A. Worth.

1913-14: J. T. Mitchell, R. Abbott; J. R. Elvey, J. Robinson, J. Jarvie; F. Hawkes, R. W. Frith; R. M. Hawkes, T. T. Wilson, M. Donaghy, E. Stevens, A. F. Durrant, A. H. Wileman, E. Simms, R. Brewis, F. Rollinson, J. Wilkie, S. Hoar.

1914-15: J. T. Mitchell, R. Abbott; J. R. Elvey, J. Dunn, J. Robinson, E. J. Potts; F. Hawkes, R. W. Frith, R. M. Hawkes, T. T. Wilson, E. G. Needham, J. Brandham; H. P. Roberts, R. N. Macfarlane, A. H. Wileman, A. Roe, E. Simms, W. Heath, F. Rollinson, J. Chipperfield, F. Lindley, S. Hoar.

PALACE

LUTON.

Always the Finest
in Variety, Pictures
:: and Music. ::

DAILY FROM 6 TO 10.45.

MATINEE : Wednesdays at 2.30.

♦ ♦ ♦ FULL PROGRAMME. ♦ ♦ ♦

PRICES (including Tax) : 1/- to 2/4.

PHONE 443.

(War interval).

1919-20: P. Summers, R. Abbott, H. Whitehead; J. R. Elvey, J. Dunn, F. Hawkes, F. Hull; R. M. Hawkes, T. Urwin, J. Rutherford, T. Parker, J. Brandham, G. Bowler, P. Stewart; S. Hoar, W. J. Grimes, A. Roe, R. Tomlinson, D. Williams, E. Simms, L. Bookman, G. Dodd, F. J. Hensman, E. J. Seymour, H. Higginbotham, F. W. P. Hill.

1920-21: H. Bailey, J. M. Watson, R. Abbott; G. Lennon, A. Tirrell, J. Semple, F. Hull, A. Reynolds, F. J. Hensman; A. Roe, T. Parker, W. Molyneux, J. W. Lamb, H. L. Cockerill, L. R. Bayliss, W. Walsh, P. Stewart; S. Hoar, H. Higginbotham, G. Butcher, F. W. P. Hill, E. Simms, A. Mathieson, L. Bookman, H. Sidney, J. Shankland, J. McKechnie, J. Bradley.

1921-22: H. Bailey, T. Gibbon; A. Tirrell, G. Lennon, R. C. Graham, F. Hull, J. Stephenson; J. H. Foster, A. Roe, J. R. Walker, W. Molyneux, T. Parker, W. Walsh, R. Millar; E. J. Bassett, S. Hoar, H. Higginbotham, S. Reid, E. Simms, A. Mathieson, G. Butcher, L. Bookman, H. Sidney, J. Hall, H. S. Jephson.

H. Farr (goalkeeper) played for Luton—Seasons 1905-6 to 1909-10.

ALL THE F.A. CUP WINNERS—Contd.

1907-8.—Wolverhampton Wanderers beat Newcastle U. (3-1).

1908-9.—Manchester United beat Bristol City (1-0).

1909-10.—Newcastle United beat Barnsley (2-0) after draw (1-1).

1910-11.—Bradford City beat Newcastle United (1-0) after draw (0-0).

1911-12.—Barnsley beat West Bromwich Albion (1-0) after draw (0-0).

1912-13.—Aston Villa beat Sunderland (1-0).

1913-14.—Burnley beat Liverpool (1-0).

1914-15.—Sheffield United beat Chelsea (3-0).

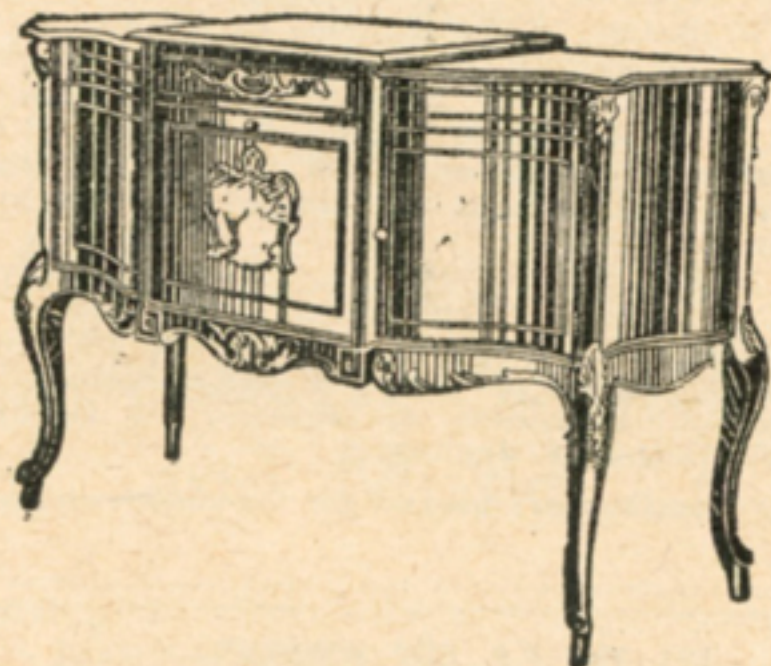
1915-16, 1916-17, 1917-18, 1918-19.—No competition.

1919-20.—Aston Villa beat Huddersfield Town (1-0) after extra time.

1920-21.—Tottenham Hotspur beat Wolverhampton Wanderers (1-0).

1921-22.—Huddersfield Town beat Preston North End (1-0).

ARTHUR DAY'S PIANOS ARE THE BEST.



Louis XV. de Luxe.

SONORA GRAMOPHONES

Supplied in 31 exquisite Models
From **24 Guineas**

The INSTRUMENTS OF QUALITY.

A large
selection
of sheet-
music
always in
stock.

**43 and 45,
George Street,
LUTON.** — Phone
481.

Inspection of
our show-
rooms
cordially
invited.

All the F.A. Cup Winners.

- 1871-2.—Wanderers beat Royal Engineers (1-0).
- 1872-3.—Wanderers beat Oxford University (2-0).
- 1873-4.—Oxford University beat Royal Engineers (2-0).
- 1874-5.—Royal Engineers beat Old Etonians (2-0), after a draw.
- 1875-6.—Wanderers beat Old Etonians (3-0) after a draw.
- 1876-7.—Wanderers beat Oxford University (2-0) (extra half-hour).
- 1877-8.—Wanderers beat Royal Engineers (3-1).
- 1878-9.—Old Etonians beat Clapham Rovers (1-0).
- 1879-80.—Clapham Rovers beat Oxford University (1-0).
- 1880-1.—Old Carthusians beat Old Etonians (3-0).
- 1881-2.—Old Etonians beat Blackburn Rovers (1-0).
- 1882-3.—Blackburn Olympic beat Old Etonians (2-1) (extra half-hour).
- 1883-4.—Blackburn Rovers beat Queen's Pk., Glasgow (2-1).
- 1884-5.—Blackburn Rovers beat Queen's Pk., Glasgow (2-0).
- 1885-6.—Blackburn Rovers beat West Bromwich Albion (2-0) (after draw).
- 1886-7.—Aston Villa beat West Bromwich Albion (2-0).
- 1887-8.—West Bromwich Albion beat Preston North End (2-1).
- 1888-9.—Preston North End beat Wolverhampton Wanderers (3-0).
- 1889-90.—Blackburn Rovers beat Sheffield Wednesday (6-1).
- 1890-1.—Blackburn Rovers beat Notts County (3-1).
- 1891-2.—West Bromwich Albion beat Aston Villa (3-0).
- 1892-3.—Wolverhampton Wanderers beat Everton (1-0).
- 1893-4.—Notts County beat Bolton Wanderers (4-1).
- 1894-5.—Aston Villa beat West Bromwich Albion (1-0).
- 1895-6.—Sheffield Wednesday beat Wolverhampton Wanderers (2-1).
- 1896-7.—Aston Villa beat Everton (3-2).
- 1897-8.—Nottingham Forest beat Derby County (3-1).
- 1898-9.—Sheffield United beat Derby County (4-1).
- 1899-1900.—Bury beat Southampton (4-0).
- 1900-01.—Tottenham Hotspur beat Sheffield United, after a draw (2-2) (3-1).
- 1901-2.—Sheffield United beat Southampton, after a draw (1-1) (2-1).
- 1902-3.—Bury beat Derby County (6-0).
- 1903-4.—Manchester City beat Bolton Wanderers (1-0).
- 1904-5.—Aston Villa beat Newcastle United (2-0).
- 1905-6.—Everton beat Newcastle United (1-0).
- 1906-7.—Sheffield Wednesday beat Everton (2-1).

(Continued on page 11)

"Pinnacle" Cigarette Football Terms Travestied.



"CENTRE FORWARD."

"PINNACE"

The Quality Navy Cut

Cigarettes

10 for 6d., 20 for 11½d.

Each packet contains a photo of a Famous Footballer and particulars of valuable cash prizes.

IN EXCHANGE FREE

for 25 small "Pinnacle" Football photos a Cabinet Photo of one of over 1,000 Famous Footballers or Cricketers will be given.

Albums arranged specially for teams, 1/-
each of all Tobacconists, or post free 1/3

GODFREY PHILLIPS LIMITED, LONDON.

ENGLISH CUP.

How Local Clubs Have Fared in Divisional Draws.

Below appear the divisional draws for the English Cup competition this season. With a little thought one may follow this method of arranging the draws more easily than that issued officially. Thus, if Luton Amateurs defeat Waterlow's Athletic, they are at home to the winners of the game between Hitchin Athletic and L. & N.W.R., and if they succeed in that game they enter the first round, again at home, and their opponents may be Apsley or Welwyn or Leavesden Mental Hospital.

LUTON TOWN and Watford excused qualifying competition. St. Albans City excused until Fourth Round of Qualifying Competition.

DIVISION 15.—Preliminary Round: Bedford Town v. Market Harborough. If Bedford win they meet in the 1st Round the winner of the game between Peterborough Loco. and Higham Ferrers Town.

DIVISION 18. Preliminary Rounds (I.):

- a. Luton Amateurs v. Waterlow's Athletic.
- b. Hitchin Athletic v. L. & N.W.R. (Wembley).
- c. Apsley v. Welwyn.
- d. Biggleswade and District v. Barnet.
- e. Wealdstone v. Berkhamsted.
- f. Letchworth Town v. Luton Clarence.
- g. Cheshunt v. Wood Green.
- h. Hitchin Blue Cross v. Hertford Town.
- i. Arlesey v. Deerfield Athletic.
- j. Old Lionians v. St. Neots.
- k. Edmonton v. Polytechnic.

Preliminary Rounds (II.).

- l. Winners of a. v. winners of b.
- m. Leavesden Mental Hospital v. winners of c.
- n. Winners of d. v. winners of e.
- o. Enfield Town v. Hampstead Town.
- p. Winners of f. v. winners of g.
- q. Winners of h. v. Fricker's Athletic.
- r. R.A.F. (Henlow) v. winners of i.
- s. Winners of j. v. winners of k.

1st Round (Qualifying Competition).

- t. Winners of q. v. winners of n.
- u. Winners of s. v. winners of r.
- v. Winners of o. v. winners of p.
- w. Winners of l. v. winners of m.

RAINCOATS with a GUARANTEE.

GENTS' MACKINTOSHES.

Fawn shade only; everyone guaranteed waterproof and made up of surplus material; very smart appearance and genuinely worth 29/6

17/6

LADIES' MACKINTOSHES.

In ten different shades. All ladies who appreciate economy will value this splendid bargain opportunity, for we absolutely guarantee the wear

18/6

LADIES' AND GENTS' RAINCOATS.

These coats are perfectly cut in very smart styles, with check lining, and guaranteed absolutely waterproof; in trench coat style or rain coat style (for gents only), in two shades

25/-

GENTS' RAINCOATS.—

An all-wool gaberdine, in rubber interlining, trench coat or rain coat style, check or shot silk lining; most wonderful value, and sold under our money-back guarantee ...

35/-

GENTS' AND LADIES' RAINCOATS.

Navy, silk lined, with all-silk interlining (or check); made of pure wool gaberdine material; submitted and passed by Government experts; wonderful value at 65/-

45/-

MILLET BROS.

13, Chapel Street, LUTON.

The Largest Government Contractors in the Country.

HOW THEY FINISHED.

THE LEAGUE—DIVISION I.										Goals	
	P	W	D	L	F	A	P				
1—Liverpool	42	22	13	7	63	36	57				
2—Tottenham Hotspur	42	21	9	12	65	39	51				
3—Burnley	42	22	5	15	72	54	49				
4—Cardiff City	42	19	10	13	61	53	48				
5—Aston Villa	42	22	3	17	74	55	47				
6—Bolton Wanderers	42	20	7	15	68	59	47				
7—Newcastle United	42	18	10	14	59	45	46				
8—Middlesbrough	42	16	14	12	79	69	46				
9—Chelsea	42	17	12	13	40	43	46				
10—Manchester City	42	18	9	15	65	70	45				
11—Sheffield United	42	15	10	17	59	54	40				
12—Sunderland	42	16	0	18	60	62	40				
13—West Bromwich Albion	42	15	10	17	51	63	40				
14—Huddersfield Town	42	15	9	18	53	54	39				
15—Blackburn Rovers	42	13	12	17	54	57	38				
16—Preston North End	42	13	12	17	42	65	38				
17—The Arsenal	42	15	7	20	47	56	37				
18—Oldham Athletic	42	13	11	18	38	50	37				
19—Birmingham	42	15	7	20	48	60	37				
20—Everton	42	12	12	18	57	55	36				
21—Bradford City	42	11	10	21	48	72	32				
22—Manchester United	42	8	12	22	41	73	28				

THE LEAGUE—DIVISION II.										Goals	
	P	W	D	L	F	A	P				
1—Nottingham Forest	42	22	12	8	51	30	56				
2—Stoke	42	18	16	8	60	44	52				
3—Barnsley	42	22	8	12	67	52	52				
4—West Ham United	24	20	8	14	52	39	48				
5—Hull City	42	19	10	13	51	41	48				
6—South Shields	42	17	12	13	43	38	46				
7—Fulham	42	18	9	15	57	38	45				
8—Leeds United	42	16	13	13	48	38	45				
9—Leicester City	42	14	17	11	39	34	45				
10—The Wednesday	42	15	14	13	47	50	44				
11—Bury	42	15	10	17	54	55	40				
12—Derby County	42	15	9	18	60	64	39				
13—Notts County	42	12	15	15	47	51	39				
14—Crystal Palace	42	13	13	16	45	51	39				
15—Clapton Orient	42	15	9	18	43	50	39				
16—Rotherham County	42	14	11	17	32	43	39				
17—Wolverhampton Wan.	42	13	11	18	44	49	37				
18—Port Vale	42	14	8	20	43	57	36				
19—Blackpool	42	15	5	22	44	57	35				
20—Coventry City	42	12	10	20	51	60	34				
21—Bradford	42	12	9	21	46	62	33				
22—Bristol City	42	12	9	21	37	58	33				



The Public Taste

is so conservative that it is sometimes difficult to induce Smokers to test for themselves the exceptional value of SUNRIPES—the Extra Size Cigarettes—with their mellow flavour and fine aroma.

When WE first sampled SUNRIPES, the choice quality and value were at once apparent—SUNRIPES really provided a smoke that really satisfied. However, do not take our word for it—try SUNRIPES yourself.

SUNRIPE

Extra Size Fine Golden Virginia
CIGARETTES

"For Size & Tone, They Stand Alone."

10 for 6D 20 for 1/-
also 50's

The Spinnet House, Estd. 147 Years, London.

THE LEAGUE—DIVISION III. (Southern Section).

	P	W	D	L	Goals		
					F	A	P
1—Southampton	42	23	15	4	68	21	61
2—Plymouth Argyle	42	25	11	6	63	24	61
3—Portsmouth	42	18	17	7	62	39	53
4—LUTON TOWN	42	22	9	12	64	35	52
5—Queen's Park Rangers	42	18	13	11	53	44	49
6—Swindon	42	16	13	13	72	60	45
7—Watford	42	13	13	11	54	48	44
8—Aberdare	42	17	10	15	57	51	44
9—Brentford	42	16	11	15	52	43	43
10—Swansea Town	42	13	15	14	50	47	41
11—Merthyr Town	42	17	6	19	45	56	40
12—Millwall	42	10	18	14	38	42	38
13—Reading	42	14	10	18	40	47	38
14—Bristol Rovers	42	14	10	18	52	67	38
15—Norwich City	42	12	13	17	50	62	37
16—Charlton Athletic	42	13	11	18	43	56	37
17—Northampton	42	13	11	18	47	71	37
18—Gillingham	42	14	8	20	47	60	36
19—Brighton and Hove	42	13	9	20	45	51	35
20—Newport County	42	11	12	19	44	61	34
21—Exeter City	42	11	12	19	38	59	34
22—Southend United	42	8	11	23	34	74	27

SOUTHERN LEAGUE.

H. BRADSHAW, 72, Chelverton Road, Putney, S.W.
Secretary.

	P	W	D	L	Goals		
					F	A	P
1—Plymouth Argyle Res.	36	22	5	9	91	33	49
2—Bristol City Reserves	36	13	8	10	73	60	44
3—Portsmouth Reserves	36	17	10	9	63	41	44
4—Southampton Reserves	36	19	5	12	70	47	43
5—Gillingham Reserves	36	17	9	10	65	47	43
6—Charlton Athletic Res.	36	18	6	12	69	54	42
7—Boscombe	36	17	5	14	38	55	39
8—LUTON TOWN RES.	36	17	4	15	50	54	30
9—Watford Reserves	36	15	7	14	65	53	37
10—Brighton & Hove Res.	36	12	13	11	60	52	37
11—Bath City	36	16	5	15	55	53	37
12—Swindon Town Reserves	36	14	7	15	59	46	35
13—Bristol Rovers Reserves	36	13	7	16	50	82	33
14—Millwall Reserves	36	13	4	19	48	53	30
15—Reading Reserves	36	11	7	18	46	59	29
16—Exeter City Reserves	36	10	9	17	42	63	20
17—Guildford United	36	11	5	19	44	56	28
18—Norwich City Reserves	36	10	6	20	47	86	26
19—Southend United Res.	36	9	3	24	47	92	21



For tone,
quality,
and
delicacy of
touch —

There is nothing better
— than the —

CHAPPELL

Sole Agents:

S. FARMER & CO.,

- 2, Wellington Street & -
83, George Street, Luton.

PIANOS OF QUALITY.



HARRY BAILEY
(Goalkeeper).

Third season. Born at Macclesfield. Found himself as a goalkeeper in the Army, in which he was a Sergeant-Instructor in the "Gym." of the Guards, when Millwall made him a professional. In 1919-20 he was a "Lion"; came to Luton the next season as a reserve, but played in 38 League games and 4 Cup-ties. Last season he played in all the League games and Cup-ties. Is 5ft. 10in.; 12st.

THOS. GIBBON
(Goalkeeper).

Second season. Native of W. Hartlepool. First won name with Southampton during war-time. Afterwards went to Merthyr and thence to Dundee. Last season he came to Luton, but never got a chance with 1st XI. owing to Bailey's fine form. Was regarded as a likely starter for another club, but managed to fix things satisfactorily again. Is a good cricketer as well as a good fellow. 5ft. 9in., 11½st.



The "Dujon" Restaurants.

GOOD QUALITY.
✻ **COMFORT.** ✻
GOOD SERVICE.

*Special Quotations given to Football
Teams.*

54, George Street, LUTON
AND
34, High Street, BEDFORD

SIDNEY BIRD
(Goalkeeper).

First season. Young Lutonian who is destined to make a name. Two years ago played for Luton Corinthians in Luton and District League, and last season attracted much attention by brilliant work for Luton Amateurs. Still young enough to add to his 5ft. 9in. and 11½st.



GEORGE LENNON
(Right Full Back).

Third season. First kicked his heels at Kilwinning, Avr. This likely candidate for Scottish International honours, came to Luton from Paisley St. Mirren, whither he went after a few months with Third Lanark. Fast, skilful, strong and evinces remarkable judgment. 5ft. 8in.; 12st.



BRIGHTEST AND BEST
FOOTBALL REPORTS.

SPECIAL COMMENTS ON
ALL LUTON TOWN GAMES.

EXCLUSIVE CRITICISMS OF
ALL LEAGUE MATCHES.

SEE ...

Lloyds

Sunday

News

NOTED FOR THE EXCELLENCE
OF ITS SPORT SERVICE.



ALFRED TIRRELL
(Left Full Back).

Third season. Desborough his birth-place. but Kettering people first to think he could play football. Then with West Ham Utd. for six seasons before coming to Luton. Got his place in second game. and kept it ever since except when injured. which is not often. Captained team two seasons. Hefty fellow. but relies on brains more than brawn. 5ft. 11in.: 13st.



ROBERT C. GRAHAM
(Left Full Back).

Second season. First breathed at Ayr village of Muirkirk. Played with Kilwinning Rangers when discovered by several big clubs. but Luton landed him. Young. fast. judicious. powerful kick: suffered from injury frequently last season. but more polished at end than beginning. 5ft. 10in.: 12st.

LADIES' HATS

VELOURS, FELTS,
STRAWS, PANAMAS

REMODELLED

Into Newest Fashions
:: equal to New. ::

Gents' Velours

SAVE and Felts SAVE
MONEY a Speciality. MONEY

Trial Solicited.

LADIES' HAT-FIX Co.

1, CHEAPSIDE, LUTON.



JOHN STEPHENSON
(Right Full Back).

Second season. Born at Horden, Durham. Came on trial early last season and retained. Did good service as back or half-back. Is small, but sturdy: has something to learn and knows it, so will improve. Fearless, tenacious and remarkably strong. 5ft. 6in.: 12st.



JOHN HENRY FOSTER
(Right Half-Back).

Second season. Native of Barnsley. Reached Luton last year from Notts County, to which he belonged after experience with Barnsley Reserves and Workson. Originally centre-half but settled down on flank. Is fast, enthusiastic, mighty in battle, and jovial always. 5ft. 11in.: 12½st.

JOHN WISDEN & Co., Ltd.,

Manufacturers & Exporters,
General Athletic Outfitters.

Cricket, Lawn Tennis, Football, Golf, Hockey, Polo, Boxing,
Racquets, Fives, and all Indoor and Outdoor Sports.

Athletic Outfitters
by Appointment to
His Majesty
King George V.

Contractors to the
Admiralty.



Also Athletic Out-
fitters to the Prin-
cipal Clubs.
Colleges, Universi-
ties, and Schools
in all parts of the
world.

Telegraphic Address: WISDEN, WESTRAND, LONDON.

Telephone No.: 23, CRANBOURN STREET,
GERRARD 2120. LONDON, W.C.2.

FOOTBALL SEASON, 1922-23. Immediate Delivery

JERSEYS or SHIRTS	48/-, 54/-, 60/- dozen
RUGBY JERSEYS	78/-, 96/- dozen
Knickers (navy or white)	42/-, 54/- dozen
FOOTBALL BOOTS	17/6, 25/- pair
SHIN GUARDS	2/-, 3/-, 4/6 pair
INFLATORS	2/-, 3/6, 5/- each

FOOTBALLS.

THE HARDINGE (as used by Arsenal, Aston Villa, Chelsea, Liverpool, Tottenham, and practically all other First-class Clubs)	25/- each
ROYAL INTERNATIONAL	25/- each
INVICTA	17/6 each.	SPECIAL SCHOOL	21/- each
GOOD PRACTICE (full size Balls)	10/6, 12/6 each

Goal Nets, Goal Posts, Flags, &c., always in stock.
Special Discount to Clubs and Schools.

The Finest Hardcourt Tennis Ball in the World is
WISDEN'S NEW STANDARD STITCHLESS
Same price as any other well-known make, but lasts
four times as long, and remains perfect until worn out.



WM. MOLYNEUX
(Right Half Back).

Third season. Of St. Helens. Had four months as a boy, with Norwich City in 1914-15. Shared 1st XI. place with Foster last season. Is rugged, but one of cleanest halves in the game, and none has a bad word for "Billy." Is strong but not tall, and has grown in skill with experience, and believes in attack as well as defence. 5ft. 7in.: 12st.

THOS. B. PARKER
(Centre Half-Back).

Fourth season. Derbyshire born and bred—Carr Vale, in Chesterfield, to be precise. Popular because clean and clever. Had misfortune to have his leg broken in first game last season, but playing soon after Christmas. Hopes to win back full confidence and a place in 1st XI. this season. Strong tackler, fast and clever with his head and feet. 5ft. 9in.: 12st.



G. A. WILD & SONS,

Saddlers and

Sports Outfitters.

14, Manchester Street,
LUTON.

Footballs

Jerseys

Knickers

Hose

Boots

Nets

Bags

and all Football Requisites
a Speciality.

INSPECTION INVITED WITH OPTION OF PURCHASE.



JAS. R. WALKER
(Centre Half-Back).

Second season. Born at Port Glasgow, came to Luton from Kilbarchan Athletic. Regarded as cleverest centre half-back Town have had for years. Is stronger than he looks; remarkably fast and judicious in tackling, and skilful nurse of forwards. Won place in 1st XI. in second game, and never lost it through inefficiency. 5ft. 8in.; 11½st.



WM. JENNINGS
(Centre Half-Back).

Recruit. Born at Cinderhill, Nottingham. Went from Notts County to Norwich City, thence to Merthyr Town, and leaves them after two years as their captain. Strong, tireless, rugged type, spoiler of opposition and builder of attack. Should be powerful agent to Luton's ambition if settles down. Biggest of side, he stands 6ft.; weighs 12½st.

Luton Town F.C. 1st XI. Fixtures, 1922-23.

DATE	OPPONENTS	GROUND	GOALS			DATE	OPPONENTS	GROUND	GOALS	
			For	Ag'st.					For	Ag'st.
1922						1922				
Aug. 26—	Charlton Athletic	H...	2—0			Dec. 30.—	Millwall	H...	1—0	
.. 23 (Mon.)—	Brentford	A...	2—0			1923				
Sep. 2—	Charlton Athletic	A...	1—0			Jan. 6—	Millwall	A...	1—1	
.. 4 (Mon.)—	Brentford	H...	3—0			.. 13—	E.C. First Round—Portsmouth			
.. 9—	Brighton & Hove	H...	2—0				Away 1—1; Replay 2—1			
.. 16—	Brighton & Hove	A...	1—1			.. 20—	Swansea Town	H...	3—0	
.. 23—	Swindon Town	H...	2—1			.. 27—	Swansea Town	A...	1—1	
.. 30—	Swindon Town	A...	1—1			Feb. 3—	Bristol Rovers	H...	1—2	
Oct. 7—	Aberdare Athletic	H...	1—2			.. 10—	Bristol Rovers	A...	0—2	
.. 14—	Aberdare Athletic	A...	0—2			.. 17—	Reading	H...	0—1	
.. 21—	Plymouth Argyle	H...	1—0			.. 24—	Reading	A...	1—2	
.. 28—	Plymouth Argyle	A...	0—2			Mar. 3—	Southend United	H...	3—0	
Nov. 4—	Newport County	A...	2—2			.. 10—	Southend United	A...	1—0	
.. 11—	Newport County	H...	4—0			.. 17—	Merthyr Town	A...	0—2	
.. 18—	Watford	A...	1—4			.. 24—	Merthyr Town	H...	3—0	
.. 25—	Watford	H...	1—1			.. 30 (Good Fri.)—	Gillingham	A...	1—0	
Dec. 2—	Bristol City*	H				.. 31—	Exeter City	A...	1—0	
.. 9—	Bristol City*	A				Apr. 2—(Eas. Mon.)—	Gillingham	H...	7—0	
.. 16—	Portsmouth	A...	1—1			.. 7—	Exeter City	H...	4—0	
.. 23—	Portsmouth	H...	1—0			.. 14—	Northampton	A...	0—2	
.. 25 (Xmas Day)—	Q.P. Rangers	A...	0—1			.. 21—	Northampton	H...	3—0	
.. 26 (Boxing Day)—	Q.P. Rangers	H...	3—1			.. 28—	Norwich City	A...	1—0	
						May 5—	Norwich City	H...	2—1	

The figures denote result last season, first figure being Luton's.

* New Clubs.

ALWAYS "IN THE FORWARD LINE."

J. W. GREEN'S
NOTED LUTON ALE

'Phone: Luton 122.

THAT "DELIGHTFUL BEVERAGE."

OBTAINABLE FROM ALL TENANTS
AND AGENTS AND FROM ———

THE BREWERY, LUTON.

Prices on Application.



The "Riley" Guarantee ensures satisfaction.

"We guarantee to replace or refund the money paid for any article which fails to give satisfaction when received, or proves defective after reasonable usage."

This guarantee enables you to send your order with every confidence, knowing that satisfaction is assured.

RILEY'S of ACCRINGTON

Everything you require for the game of Football—Jerseys, Knickers, Footballs, Stockings, Nets, Posts, etc., can be had from "The Premier Sports House," together with the necessities for all other winter sports.

Riley's have an enviable reputation all over the world for all sports requisites, and no article is sent out which might injure this reputation.

FREE. Write to-day
for Riley's
Winter Sports Catalogue

E. J. RILEY Ltd., Hill Sports Works, **ACCRINGTON**



22/23
ARTHUR ROE
(Left Half-Back).

Seventh season. Born at South Normanton, Derbyshire. Came as centre-forward, played at all inside positions, and sometimes on extremes before blossoming as half-back. Superlative skill and scrupulous cleanliness. May get a benefit this season. 5ft. 9in.; 12st.

ROBERT MILLAR
(Left Half-Back).

Second season. Nativity, Dalry, Ayr. Formerly centre-half, but settled down as left half. Played several times for 1st XI. last season, and will not be to blame if he does not play more this. A worrying worker, improved his football education last season. Is 5ft. 10in.; 12st.



For Dinners and Teas—

VISIT

Garner, Wood & Co.,
—Ltd.,—

12, Manchester St., Luton.

PROMPT AND EFFICIENT
SERVICE.

POPULAR PRICES.

Parties specially catered for.

**Tents, Tables, Plate, Glass,
Cutlery, etc., etc., on hire.**



RICHARD READER
(Outside Right).

Recruit. Born at Derby and first big club was Leicester Fosse, but that was a sort of trial run for Derby County, for whom he played in 1913-14. The following season he went to Bristol City, and has been with them ever since. Last season was a bad one for the City, and Reader suffered effects of injury sustained in E.C. semi-final the previous season, but is now recovered. He is very fast and clever. 5ft. 7in.; 11st.

SIDNEY HOAR
(Outside Right or Left).

Eighth season. Leagrave born. Came to Town from Luton Clarence. Last season took record benefit, and also played in F.A. representative side against Cambridge University. Not been in best of health, although always first choice for either extreme when fit. Takes either wing with equal facility. Is faster than average, tricky, and knows geography of goal. 5ft. 8in.; 10½st.





No. 1312.

MEDALS

For Football, Cricket,
Athletic and Cycling
Clubs.



We are actual manufacturers of Medals, having our own factory in Birmingham, and would ask you to compare our finish and prices with any other medal manufacturers.

We make a speciality of Club Medals, and are always pleased to get out special designs for any clubs.

When you want Medals, WRITE FOR OUR LIST. We give a special discount to clubs.



HINDS LIMITED

5, PARK SQUARE, LUTON.

Branches at Hammersmith, Wood Green, Woolwich, Reading, Chatham, Southampton, Lewisham, Clapham Junction, Croydon, Hatton Garden, and Birmingham.



HARRY HIGGINBOTHAM
(Inside Right).

Fourth season. Born in Australia, but is Scot in everything else. After Scottish League experience, went to South Shields, and thence to Luton. Big, fearless, mixes English and Scottish styles well. Others reaped goals from his cleverness till late last season, when he broke out as marksman, his tally being 14 goals. 5ft. 11in.; 12½st.

ALBERT C. BROWN.
(Centre-Forward).

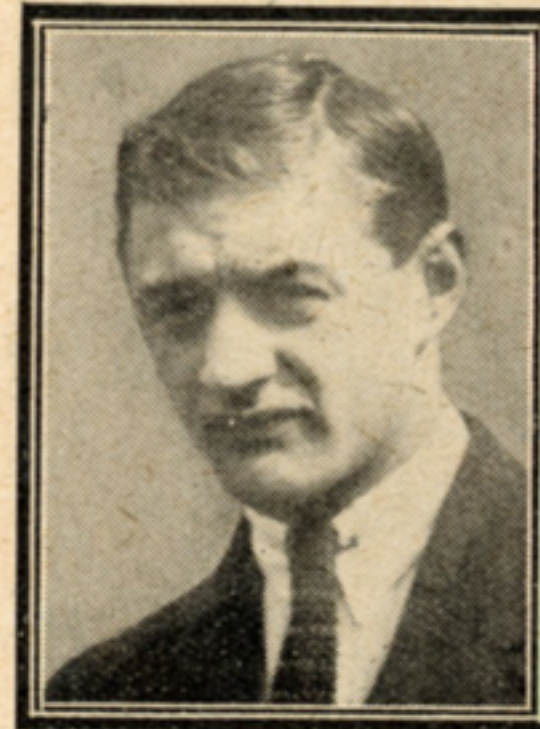
Recruit. Bedford was his birth-place, but Wolverton first realised his possibilities in football. Then Kettering took to him last year, and he scored thirty goals for them in Central Alliance games. Is thrustful leader and strong shot. Has won fame as sprint runner. In early twenties, has plenty of time to make good. 6ft.; 12st.



Evening News

COMPLETE
- - AND - -
CORRECT
FOOTBALL
RESULTS.

Evening News



SIDNEY REID
(Centre-Forward).

Second season. Only Welshman in team, born at Troedyrhiw, near Aberdare, barely 19 years ago. Came to Luton late last season from Troedyrhiw Star, and won place in first team after Simms' departure. Has courage and ardour of youth, can shoot well, and passes well. Drawback is lack of inches. 5ft. 6in.; 10½st.

ROBT. THOMPSON
(Centre Forward).

Recruit. Born at Ferryhill, Durham, and first season in class football was with Preston North End. Thence to Bristol Rovers for a season, and in 1919-20 was leading goal-scorer for Durham City with 25 goals. In 1920-21 was with Leeds United, and was top scorer with 11 goals for 20 games. Last season went to Ashington, and figured chiefly on the extreme right. 6ft.; 12½ st.



Play Football

IN

**PUBLIC BENEFIT
BOOT Co.'s**

Football Boots

**SOLID &
RELIABLE**

SEE WINDOWS.

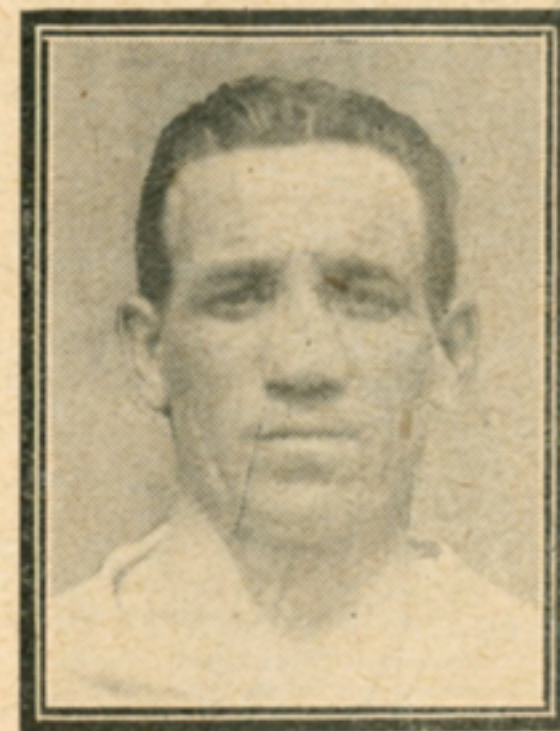
**CLOCK HOUSE,
Park Square, - LUTON.**

PHONE. 185



WILLIAM J. DORMER
(Inside Forward).

The amateur's second season. Born at Wolverton, he showed promising form with Wolverton Town in the North Bucks League for two seasons before coming to Luton and winning a place in the reserve team. Made much improvement, adding judgment to his speed and dash. 5ft. 8in.: 10st. 2lbs.



GEORGE BUTCHER
(Inside Left).

Third season. Born in London, but learned football at St. Albans. With West Ham United 10 years before achieving heart's desire of playing for Luton in 1920-21. Lack of inches compensated by wonderful trickery. Always fit, fearless and indefatigable. 5ft. 6in.: 10st.

JACK SHARP,

(International Football and Cricket Teams)

EXPERT SPORTS OUTFITTER.

JACK SHARP'S EXPERT FOOTBALL (Reg. No. 672931)



is an ideal Match Ball, correct weight, size and shape. Used by principal Clubs at home and abroad.

LIVERPOOL F.C.

First Division League Champions, 1921-22, have consistently used the Expert for the last 13 years.

ENGLISH CUP FINAL.

Huddersfield v. Preston North End, April 29, 1922. Jack Sharp's Expert Ball was selected from amongst many others for use in this match.

ENGLAND v. WALES.

March 13, 1922. This game was played with Jack Sharp's Expert Football.

Price 24/- post free.

JACK SHARP'S FOOTBALLS, Match Size (post free).

WATERTITE.

Does not get heavy in wet weather.

21/- each.

Will wear well and keep its shape.

FINAL.

Better value cannot be obtained.

18/3 each.

Two for 35/-

IDEAL.

A reliable Ball at a medium price.

16/3 each.

Two for 31/-



KNICKERS (post free)

White 2/9 3/3 3/9

Navy 3/- 3/6 4/-

JERSEYS (post free).

Men's sizes from 33/- dozen.

Coloured Designs.

FOOTBALL BOOTS.

Perfect fitting. Post free.

11/3 14/3 16/3

21/- per pair.



FOOTBALL GOAL NETS. Complete. 79/6 & 85/- carriage paid.

Football Catalogue—post free. Please write now for a copy.

JACK SHARP, 38, Whitechapel, Liverpool



THOS. B. IRVINE
(Inside Left).

Recruit. Native of Springside, Ayr. Graduated with Springside, and then last year was with Dregghorn Juniors, in the Western Junior League, Scotland. A steady-going little chap, he is plucky and a fine shot, and Scotland expects him to make a name. 5ft. 7½ins.; 11st.



WM. CLARKSON
(Outside Left).

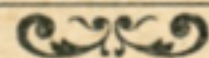
Recruit. Born at Wombwell, Yorks. Came into prominence as Burnley's left winger in 1914, and rejoined that club after the war. Then went to Rotherham County, for whom he played against Luton in Cup-tie in 1920. Could not settle at Rotherham, so was put on transfer list, but hopes for longer and happier stay in Luton. 5ft. 7in.; 11st.

Charnley and Sons

are Members by Examination
of the British Optical
Association.

**Sight Testing
Spectacle Fitting
✱ Repairs. ✱**

Oculists' Prescriptions made up



Hours : 9.30 to 1. 2.30 to 7.

**15, Wellington Street,
LUTON.**



**WM. LAWSON
(Trainer).**

Says this, his thirtieth, year will be his last, but nobody else can bear to think of it. Not a better trainer in the wide, wide world, either for good fellowship or ability. Rejoices with them in victory and cheers them in defeat. Track and fistic circle have known him. Man without enemies because he is everybody's friend, and wins more every day by his skill as a masseur.

**H. DAY.
(Groundsman).**

Third season. Has done wonderful work on playing pitch, and will now be as proud of his job as he is painstaking. Solicitous for everybody's comfort, and has won golden opinions from all interested in the club.



W. BELL & SON,

TAILORS AND - -
BREECHES MAKERS.

40 YEARS'

practical experience
- embodied in the -
Cutting and Making
of our Garments.

We cordially invite you to
see them in the making

Chapel St., Luton.

Established 1882. ✂ ✂ ✂ Phone 403.

AT YOUR SERVICE.

Luton Town Reserves Fixtures, 1922-23.

Date.	Opponents.	Ground.
1922.		
Aug. 26	Guildford United	A
" 30 (Wednesday)	Torquay United	H
Sep. 2	Guildford United	H
" 9	Brighton	A
" 16	Brighton	H
" 23	Swindon	A
" 30	Swindon	H
Oct. 7	Yeovil	A
" 14	Yeovil	H
" 21	Plymouth	A
" 28	Plymouth	H
Nov. 4	Southampton	H
" 11	Southampton	A
" 18	Watford	H
" 25	Watford	A
Dec. 2	Bristol City	A
" 9	Bristol City	H
" 16	Portsmouth	H
" 23	Portsmouth	A
" 25 (Xmas Day)	Charlton (F.)	H
" 26 (Boxing Day)	Charlton (F.)	A
" 30	West Ham (F.)	A
1923.		
Jan. 6	West Ham (F.)	H
" 13	Torquay	A
" 20	Millwall	A
" 27	Millwall	H
Feb. 3	Bristol Rovers	A
" 10	Bristol Rovers	H
" 17	Reading	A
" 24	Reading	H
Mar. 3	Southend	A
" 10	Southend	H
" 17	Boscombe	H
" 24	Boscombe	A
" 30 (Good Friday)	Coventry City	H
" 31	Exeter City	H
Apr. 2 (Easter Monday)	Coventry City	A
" 7	Exeter City	H
" 14	Bath City	H
" 21	Bath City	A
" 28	Norwich City	H
May 5	Norwich City	A

Keep your Hair on!

Use Cocker's
Emulsified Cocoanut Oil.

An extra good shampoo.

Price 1/6 per bottle.

WHEN YOU ARE RUN DOWN
and want "bucking up"—take
FOSFO TONIC.

Made by H. E. Cocker.

Price 1/3 and 2/3 bottle.

H. E. COCKER, M.P.S.,

Pharmaceutical Chemist,

**KENILWORTH PHARMACY,
DUNSTABLE ROAD, LUTON**

(Corner of Kenilworth Road).

Luton Clarence

Fixtures, 1922-23.

ATHENIAN LEAGUE.

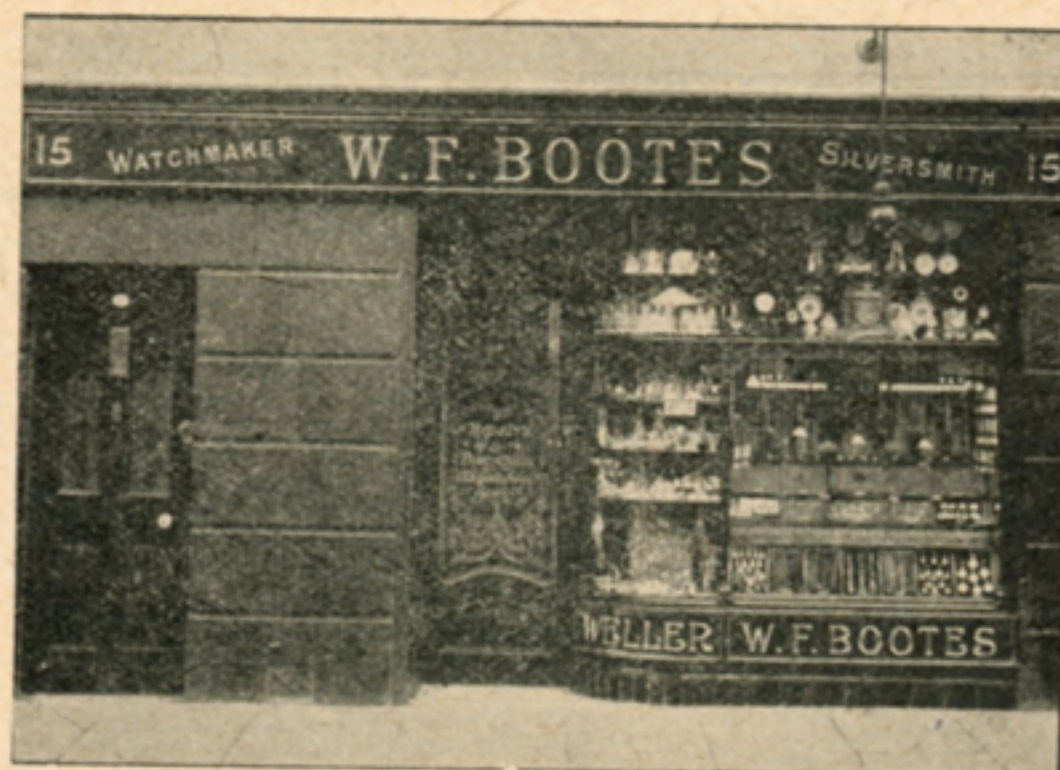
1922	
Aug. 26—Sutton United	A
Sep. 2—Hampstead Town	H
.. 9—Letchworth (E.C.)	A
.. 16—Bromley	H
.. 23—Southall	A
.. 30—Amateur Cup.	
Oct. 7—English Cup.	
.. 14—Kingstonians	H
.. 21—English Cup.	
.. 28—Enfield	A
Nov. 4—Windsor and Eton	H
.. 11—Barnet	A
.. 18—Amateur Cup.	
.. 25—Metrogas	A
Dec. 2—	
.. 9—Amateur Cup.	
.. 16—Cheshunt	H
.. 23—St. Albans City	A
.. 25 (Xmas Day)—	
.. 26—Hampstead Town	A
.. 30—Southall	A
1923	
Jan. 6—St. Albans City	H
.. 13—	
.. 20—Guildford	A
.. 27—Kingstonians	A
Feb. 3—Windsor and Eton	A
.. 10—Barnet	H
.. 17—	
.. 24—Beds Cup	
Mar. 3—	
.. 10—Sutton United	H
.. 17—Summerstown	A
.. 24—Bromley	A
.. 30 (Good Fri.)—Enfield	H
.. 31—Metrogas	H
Apr. 2 (Easter Monday)—	
.. 7—Cheshunt	A
.. 14—Guildford	H
.. 21—	
.. 28—Summerstown	H
May 5—	

Fricker's Ath.

Fixtures, 1922-23.

Middlesex Senior League.

1922	
Aug. 26—Hampstead T. ...	A
Sep. 16—Harrow Weald ...	A
Oct. 21—Chelmsford	A
Nov. 18—R.A.F. (Ux.)	H
Dec. 2—Deerfield Ath. ...	A
.. 26—Luton Amateurs	
1923	
Jan. 6—Harrow Green....	A
.. 13—Chelmsford	H
.. 20—R.A.F. (Ux.)	A
Feb. 3—H.M.S. Office	A
.. 10—Harrow Weald ...	H
.. 17—L. & N.W. R.	A
.. 24—H.M.S. Office	H
Mar. 3—Walthamstow T. A	
.. 10—L. & N.W.R.	H
.. 17—Walthamstow T. H	
.. 24—Deerfield Ath. ...	H
Apr. 4—Luton Amateurs	
.. 7—Colchester T.	A
.. 14—Harrow Green. ...	H
.. 21—Colchester T.	H
.. 28—Hampstead T. ...	H



The Shop for

Lucky Wedding and Engagement Rings

in 9-18-22 Carat Gold.
All sizes kept in stock.

15, GUILDFORD ST.,
LUTON.

Leighton United.

1st Team.

SPARTAN LEAGUE.

1922	
Sep. 2—Walthamstow Ave.	A
.. 9—Slough	H
.. 16—Finchley	H
.. 23—Polytechnic	H
.. 30—Gt. Western Rly.	H
Oct. 7—Cubitt's	H
.. 14—Rly. Clearing House ...	A
.. 21—Wendover	H
Nov. 4—Wealdstone ...	H
.. 11—Cubitt's	A
.. 18—Apsley	H
.. 25—Finchley	A
Dec. 2—Wealdstone ...	A
.. 16—Aylesbury United	H
.. 25—Berkhamsted	A
.. 26—Berkhamsted	H
.. 30—Wendover	A
1923	
Jan. 20—Apsley	A
Feb. 17—Slough	A
Mar. 10—Walthamstow Ave.	H
.. 24—Aylesbury United	A
.. 31—Chesham	H
Apr. 2—Chesham	A
.. 7—Polytechnic	A
.. 14—Rly. Clearing House ...	H
.. 21—Gt. Western Rly.	A

BEDS COUNTY LEAGUE.

1922	
Aug. 26—R.A.F. (Hen.) ...	H
Sep. 16—Stotfold Ath. ...	A
.. 23—Letchworth	A
Oct. 9—Arlesey	A
.. 14—Biggleswade	H
.. 14—Junior Cup, Ex. Prel. Round.	
.. 28—Senior Cup, Prel. Round.	
Nov. 4—Junior Cup, Prel. Round.	
Dec. 9—Junior Cup, First Round.	
.. 9—Senior Cup, First Round.	
.. 23—Waterlow's	H
1923	
Jan. 6—Junior Cup, Second Round.	
.. 27—Senior Cup, Second Round.	
Feb. 3—Luton Clarence A	
.. 10—Junior Cup, First Rd. Proper.	
.. 24—Luton Clarence ...	H
Mar. 3—Letchworth	H
.. 10—Waterlow's	A
.. 10—Senior Cup, Semi-final.	
.. Junior Cup, Semi-final.	
.. 17—Biggleswade	A
Apr. 7—Stotfold Ath. ...	H
.. 14—R.A.F. (Hen.)	A
.. 28—Arlesey	H

Central **Restaurant,** **20, 22 & 24, CHEAPSIDE,** **LUTON.**

The Largest Restaurant in Luton
 with seating accommodation for 200

AFTER THE MATCH

pay us a visit.

Quick Service. Popular Prices.

LARGE OR SMALL
FOOTBALL PARTIES
 ESPECIALLY CATERED FOR.

Prices on Application.

*Established
 50 Years.*

Proprietor: S. G. PRIMETT.

Bedfordshire Football Association.

COUNTY CUP HOLDERS.

Premier Cup.—Luton Town Reserves.
 Senior Cup.—R.A.F. (Henlow).
 Junior Cup.—Wootton Blue Cross.

OFFICIALS.

President: Mr. E. Lyonel Finch, 13a, Hassett Street, Bedford.

Vice-Presidents: Mr. C. H. Ridgway, 19, Vandyke Road, Leighton Buzzard; Mr. C. Green, 73, Hazelbury Crescent, Luton; Mr. E. Humphreys, 35, Commercial Road, Bedford.

Auditors: Mr. S. Moody, Chiltern Rise, Luton; Mr. G. Wistow Walker, 40, Brook Street, Luton.

Executive Council:

Division 1.—Mr. Edgar Wood, Biggleswade.
 Division 2.—Mr. E. Batterson, Henlow.
 Division 3.—Mr. T. Merrall, 17, Bridge Road, Bedford.
 Division 4.—Mr. H. Eaton, 4, Cromwell Road, Bedford.
 Division 5.—Mr. F. Stanton, 132, Spring Road, Kempston.
 Division 6.—Mr. S. J. Darby, 106, Church St., Dunstable.
 Division 7.—Mr. F. E. Hawkes, 6, Cumberland St., Luton.
 Division 8.—Mr. L. E. Hawkes, 22, Naseby Road, Luton.
 Division 9.—Mr. J. J. Hunt, 37, Reginald Street, Luton.
 Division 10.—Mr. J. Vass, 45, Chapel Street, Luton.

Emergency Committee: Mr. E. Lyonel Finch, Mr. C. Green, and the Hon. Secretary.

Hon. Secretary and Treasurer: Mr. Albert E. Ansell, Prudential Chambers, Luton.

The present personnel may be changed at the election in August.

AFFILIATED LEAGUES AND COMPETITIONS.

With Secretaries' names and addresses.

Bedford and District League (1919). T. Merrall, 17, Bridge Street, Bedford.

Bedford and District Thursday League (1906). W. J. Baker, 19, Cromwell Road, Bedford.

Bedford and District Thursday (Cup) (1908). W. J. Baker, 19, Cromwell Road, Bedford.

Biggleswade and District League (1908). Edgar Wood, Biggleswade.

Leighton and District Cup (1913). T. Bunker, Rosebery Avenue, Leighton Buzzard.

Leighton and District League (1908). H. F. Hopkins, 37, South Street, Leighton Buzzard.

Luton and District League (1898). J. Vass, 45, Chapel Street, Luton.

Luton Free Church League. J. P. Goldsmith, 69, Tennyson Road, Luton.

North Beds Charity Cup (1907). Edgar Wood, Biggleswade.

Look at the Clubs who, year after year since 1904, have worn the Manfield-Hotspur continuously. The most famous of the world! The proportion of principal teams wearing the Manfield-Hotspur to any other is shown in striking figures. Of the 108 clubs in the English and Scottish Leagues, 80 play in "Manfield's."

Four widths. Half-sizes.

(Relative prices, Boys)

Manfield

Catalogues free, from
MANFIELD & SONS, Ltd.,
59 & 60,
ST. PAUL'S CHURCHYARD,
London, E.C.4

*Branches and Football
Boot Agencies all towns.*

This mark on every Sole

**"MANFIELD-
HOTSPUR"**



20/-
(Post Free)

LIST OF AFFILIATED CLUBS.

A Name and address of Secretary. B Club's ground.
C Club's colours.

Ampthill Town. A F. G. Hollis, 43, Dunstable Street, Ampthill. B Ampthill Park. C Green.

Arlesey. A C. Rainbow, Arlesey. B Bury Meadow. C Light blue and dark blue stripes.

Aspley Guise. A Oscar R. Watson, Mount Pleasant, Aspley Guise. B The Common. C Dark blue.

Bedford A.G.E. A G. A. Armstrong, 14, Kempston Road, Bedford. B Elstow School. C Black and white.

Bedford Argyll Rangers. A A. Lewis, 16, Argyll Street, Bedford. B Bedford Park. C Black and red stripes.

Bedford Celtic. A A. J. Coxan, 8, Trinity Road, Bedford. B Russell Park. C Green and white.

Beds and Herts Regt. (Depot). A R.S.M. J. A. Shrivess, Kempston Barracks, Bedford. B The Barracks. C Black and amber.

Bedford Ivy Leaf. A J. E. Smith, ex-Service and Ivy Club, Bedford. B Three Tuns, Biddenham. C White.

Bedford Lynton Works. A W. Barley, 90, Honey Hill Road, Bedford. B Spring Road, Kempston. C Claret.

Bedford Meltis. A F. W. Ireland, 149, Dudley Street, Bedford. B Ampthill Road. C Claret and amber.

Bedford Midland Athletic. A C. A. Brummell, 5, Cromwell Road, Queen's Park, Bedford. B Russell Park. C Claret and amber.

Bedford Montrose. A F. W. Beart, 39, Omersley Road, Bedford. B Russell Park. C Green.

Bedford Priory Nomads. A O. Phillips, 101, Priory Street, Bedford. B Bedford Park. C White.

Bedford Queen's Park Rangers. A S. T. Shadrake, 5, Lawrence Street, Bedford. B Queen's Park Recreation Ground. C Dark blue.

Bedford St. Cuthbert's. A R. J. Brawn, 11, Richmond Road, Bedford. B Russell Park. C Navy with white V.

Bedford Town. A E. W. Taylor, 108, Howbury Road, Bedford. B Ford End Road. C Green and white.

Beeston United. A C. W. Hull, The Baulk, Beeston, Sandy. B Odell's Meadow. C Red and white stripes.

Biggleswade and District. A Tom Ferguson, Blunham House, Biggleswade. B Fairfield. C Green.

Biggleswade Victoria. A J. Girling, 2, Mill Lane, Biggleswade. B F. C. Kitchener's Meadow, Hitchin Street. C Royal blue.

Bromham and Stagsden. A H. J. Mortimer, Bromham, near Bedford. B Bromham. C Claret and white stripes.

Bushmead Athletic. A C. B. Humphries, Ivy Cottage, Tempsford, Sandy. B River Bridge Meadow, Tempsford. C Royal Blue.



Thousands of
**Association
and Rugby
Football**

(Hand - Sewn
Solid Hide);
18/6 21/- 22/6
25/-

Thousands of
**Football
Boots**

12/6 14/6 18/6
21/- 22/6

**Jerseys,
Knickers,
Stockings.**

Everything
for
**FOOTBALL
READY
FOR IM-
MEDIATE
DISPATCH.**

Send for Free
Lists.

All the Best
Clubs use our
Goods.

WILLS & Co., Lancashire
Sports Factory
Yorkshire St., **OLDHAM.**

Tel. No. 715.

Caldecote. A J. Milton, Manor Farm, Upper Caldecote, near Biggleswade. B Mrs. Taddy's, Caldecote Lodge, Field. C Green and white stripes.

Cardington. A C. E. Taylor, The Green, Cardington, near Bedford. B Station Road. C Black and white stripes.

Clifton. A Percy Meeks, Clifton, near Biggleswade, Beds. B Mr. A. Inskip's Meadow. C Maroon and white.

Clophill United. A E. Fossey, High Street, Clophill. B Hunter's Meadow. C Blue jersey with red facings.

Cranfield. A C. F. Salisbury, Old George House, Cranfield. B Cricket Field, Home Farm. C Navy and sky.

Dunstable Christ Church Institute. A H. D. Walker, 73, King Street, Dunstable. B Mr. Leno's Meadow, Bull Pond Lane. C Claret and blue stripes.

Dunstable Wesleyans. A T. Goodwin, 10, Winfield Street, Dunstable. C Blue and white.

Dunton. A A. E. Chessum, Boot Lane, Dunton, Biggleswade. B Holme Close, Millow. C Green and scarlet.

Eaton Bray United. A J. Bates, Bower Cottage, Eaton Bray, near Dunstable. B Recreation Ground, Eaton Bray. C Dark blue and amber.

Eaton Socon. A B. Gates, The Cycle and Motor Depot, Eaton Socon, Beds. B Arnold's Field. C Black and amber.

Elstow Abbey Athletic. A M. G. Pestell, 5, Sandhurst Road, Bedford. B Jefferson's Field, Elstow. C White.

Forder's Works (Wootton Pilling). A W. T. Ellis, 2, Forder's Cottages, Wootton Pilling, near Bedford. B Wootton Pilling. C Black with amber facings.

Girtford Rovers. A F. Jeeves, jun., London Road, Sandy. B Niblow's Field. C Dark blue.

Gravenhurst. A G. Brewer, Gravenhurst.

Goldington. A E. W. Brewer, "Somerville," King Edward Road, Goldington, Bedford. B Goldington Green. C Blue with white facings.

Great Barford. A Rev. A. J. W. Pym, Great Barford Vicarage, Sandy, Beds. B Fisher's Close. C Seniors, scarlet and white; Juniors, black and amber.

Harlington Rovers. A G. W. Harris, Sundon Road, Harlington, near Dunstable. B Barton Road, Harlington. C White.

Harrold United. A J. Nicholls, The Institute, Harrold, Beds. B Conegrees, Harrold. C Blue.

Haynes Park Rangers. A G. Bass, Silver Lane, Haynes, Beds. B Haynes Park. C Black and white stripes.

Heath United. A L. J. Stevens, Heath Road, Heath and Reach, Leighton Buzzard. B Heath. C Red and black stripes.

Henlow. A F. Harris, Church End, Henlow, Beds. B Henlow Park. C Black and amber.

HARRY PARSONS

At Your Service.

Whether you are in need of

FOOTBALL

or

SPORTS ATTIRE

or EVERY-DAY WEARING APPAREL,

You are sure of

Personal Service and Best Value.

**18, Manchester Street,
LUTON.**

Kempston Rovers. A F. W. Curtis, 32, Cater Street, Kempston. B Wendall's Lane. C Red and white.

Kensworth. A T. F. Kempson, Kensworth, near Dunstable. B Kensworth Park. C Black and amber.

Langford. A S. J. Brown, 72, Hitchin Road, Biggleswade. B Near the Mill, Langford. C Red.

Leighton British Legion. A A. R. Hosking and A. T. Halley, British Legion Club, Town Hall, Leighton Buzzard. B Lake Street. C Royal with white sleeves.

Leighton Phoenix. A G. A. Sedgwick, "Umtali," Beaudesert, Leighton Buzzard. B Page's Park. C White.

Luton Amateurs. A R. K. Brown, 4, Kenilworth Road, Luton. B "The Dell," Old Bedford Road. C White.

Luton Bury Park Institute. A R. C. Cox, 48, Highfield Road, Luton. B Dunstable Road. C Claret and sky.

Luton Casuals. A L. Russell Dellar, 21, Upper George Street, Luton. C White.

Luton Clarence. A S. C. Kilby, 88, Spencer Road, Luton. B Round Green. C Black and white stripes.

Luton Fricker's Athletic. A R. S. Allen, c/o Fricker's Metal Co., Ltd., Portland Road, Luton. B Portland Road. C Claret and sky.

Luton Town. A C. Green, 73, Hazelbury Crescent, Luton. B Off Dunstable Road. C White.

Luton United. A R. S. Cooper, 18, Tavistock Street, Luton. B Bell Close. C Royal blue with white facings.

Luton Unity (Wednesday). A P. Tysom, 33, Grove Road, Luton. C Sky blue.

Luton Wednesday Hotspurs. A B. Frost, 14, Shaftesbury Road, Luton. C Black and amber stripes.

Marston Rovers. A W. Wright, "The Morteyne Arms," Millbrook Station (L. & N.W.R.), near Ampthill, Beds. C Blue.

Maulden Stars. A E. W. Saunders, Snow Hill, Maulden, Ampthill. B Mr. Godfrey's Meadow. C Blue and white stripes.

Meppershall. A T. Ashton, Meppershall, near Shefford. B Church Meadows. C Red and green stripes.

New Fenlake Athletic. A A. Warton, 28, New Fenlake, Bedford. B "The Anchor," Old Fenlake. C Chocolate and light blue.

R.A.F., Henlow. A Sgt. J. N. Thompson, R.A.F., Henlow. B Henlow Aerodrome. C A team, white; B team, blue; c team, red.

Ravensden. A W. C. J. Rogers, Renhold Road, Ravensden, Beds. B Ravensden. C Red and amber halves.

Renhold Social. A F. Northcott, "Three Horse Shoes," Renhold, Bedford. B Field adjoining "Three Horse Shoes." C Red.

Langley Garage

Castle Street, Luton.

Complete Service *— Depot —*

Repairs and Overhauls,
Tyres and Tubes,
Accessories, Haulage,
CHAR-A-BANCS, Hire
Cars, Lock-up Garages,
New and Second-hand
Cars and Lorries.

**The Most Up-to-date Garage in the
County. — Open Night and Day.**

Proprietor: B. E. BARRETT.

TELEPHONE 846 (Private Branch Exchange.)

Royal Airship Works (Shortstown). A A. L. Martin, 6, North Drive, Shortstown, Cardington, Beds. B The Aerodrome. C Black and white stripes.

Sandy Albions. A H. W. Finding, Cambridge Road, Sandy. B Recreation Ground, Bedford Road. C Black and white stripes.

Sharnbrook. A A. J. Chappell, Sharnbrook. B Mr. Newman's Field. C 1st XI., red and blue stripes; 2nd XI., blue and white stripes.

Shefford United. A J. P. Gavin, 4, Hitchin Road, Shefford. B Shefford Hardwicke. C Claret with blue sleeves.

Silsoe Stars. A F. Bottoms, High Street, Silsoe. B Wrest Park. C Sky blue.

Southill United. A A. Huckle, Stanford, Biggleswade. B Yew Tree Farm. C Black and green stripes.

Stevington United. A A. J. Mackness, The Institute, Stevington, Beds. B Silver Street. C Black and amber.

Stondon. A J. Smith, 2, Chapel Cottages, Lower Stondon, Shefford. B Church Meadow. C Black and green.

Stotfold Athletic. A Frank D. Gentle, "Green View," Stotfold, near Baldock, Herts. B High Street. C Black and amber.

Sutton Amateurs. A E. R. Stonebridge, Sutton, near Sandy, Beds. B Sutton Park. C Claret and sky.

Toddington Star. A F. R. Sommerton, Leighton Road, Toddington. B Dropshort Farm. C White.

Turvey United. A A. E. Whitlock, Carlton Road, Turvey, Beds. B New Park, Turvey. C Dark blue.

Waterlow's (Dunstable). A W. W. Goodyear, c/o Waterlow & Sons, Ltd., Dunstable. B High Street North. C Red and black stripes.

Willington United. A A. Swannell, Hill Farm, Willington. Beds. B Vicarage Grounds. C Green.

Wilstead Juniors. A R. Burr, near Infants' School, Wilstead, Beds. B Hooked Lane Meadow. C Black and white stripes.

Wilstead United. A H. A. Bridges, Rose Cottage, Wilstead. Beds. B Village Meadow. C Green and white stripes.

Woburn Stars. A C. J. Crocker and J. Dobbs, Joint Secretaries, 61, Leighton Street, Woburn. B London Road. C Black and amber stripes.

Woburn and Woburn Sands United. A F. G. West, London Road, Woburn. B Mr. Negus's Field. C Black and white stripes.

Wootton Blue Cross. A R. B. Walker, Wootton, Bedford. B Fisher's Field. C Light and dark blue.

Wootton United. A A. A. Gilbert, Hall End, Wootton. Beds. B Hall End. C Black and amber.

Wymington Stars. A A. Hall, White Horse Yard. B Podington Road. C Claret and blue.

Phone : HOLBORN 391.

CARTER & COX

(W.T.C.)

(A.G.C.)

For
MEDALS,
BADGES,
CUPS,
and
SHIELDS,
etc.

Secretaries
should write for
samples on
approval to test
our splendid
workmanship at
LOWEST PRICES

ENAMEL
MEDALS
A Speciality

Atlantic House,
46a, HOLBORN VIADUCT,
LONDON, E.C.



BLUNDELL'S

Men's and Boys' Wear
SPECIALISTS.

Lounge Suits in tweeds, cheviots and worsteds, made to measure, £3 19s. 6d.

In all wool serge, guaranteed indigo dye, every suit well tailored and finished, from £4 4s.

Made in our own workrooms.

NEW SEASON'S OVERCOATS

Men's all wool nap overcoats in navy, grey, brown, or Lovat shades, exceptional value, at £2 2s. Call and see the new patterns, from 35/-.

Boys' School Suits in "Hardazian" Tweeds, in attractive shades, well tailored and finished, from 39/6.

Remarkable value in all wool tweeds, 3 garments, fit boys age 8 to 12. 21/- on first size.

BLUNDELL BROS.

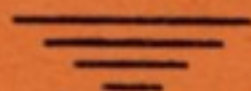
(LUTON) LTD.,

12, Cheapside, Luton.



Chas. MARES

can supply



**Jerseys,
Knickers,
Boots,
Stockings,
Sweaters,
etc.**

**at Less than
London Prices.**

Ask for quotations at
George Street
and
Dunstable Road,
LUTON.

