

The
Luton News



Football Handbook

1923-1924

Still Leading !!

FOSTER BROS.
CLOTHING CO., LTD.

EVERYTHING in Men's,
Youths' & Boys' WEAR.
Suits to order a speciality.

22, Market Place,
LUTON.

Over 100 other
Branches.

try Strange's first
for
EVERYTHING



SEE WINDOWS
for **VALUES**
IN ALL DEPTS.



Strange & Son
The General Drapers, Hosiers, Etc
Wellington St, LUTON

PROSPECTS.

Our position in the League was not quite so good at the end of last season as the year before. We finished fifth, as compared with fourth. It was a good record, however, and a high standard of play will have to be maintained this year if it is to be improved. On the face of things there is every reason for optimism. We have a young, steady set of players, and men of experience and proved ability, and, all things considered, the prospects of promotion should be a little brighter than last season. Among the players that have left are Bailey, Lennon, Parker, Higginbotham, and Clarkson, and their places will be hard to fill. We have also sustained the loss of Billy Lawson, after nearly 30 years' service. May his business prosper and his smile never come off.

Death removed a popular figure in 'Mr. W. J. Allen, a director for many years, and it is doubtful if his place will be filled.

The directors face an anxious time, for their commitments are heavy, but with the support the club deserves, and a little better fortune than we had last season, we should do well.

CLUB OFFICIALS.

Directors.

H. ARNOLD, Esq., J.P. (Chairman).
Messrs. P. A. EDWARDS E. GIBBS. E. MOUSE. H. SMART.
W. SOPER. OSCAR HART. STANLEY H. GODFREY.

The retiring directors, Messrs. H. Arnold, S. Godfrey, and H. Smart, will seek re-election at the general meeting.

AUDITOR.

THOS. KEENS, Esq., F.C.A.

Secretary:

CHAS. GREEN, 73, Hazelbury Crescent, Luton.

Colours: White jerseys, black knickers.

Ground: Kenilworth Road. (off Dunstable Road), Luton.

Phone : 223.

EST. 1860.

GET YOUR Manfield-Hotspur FOOTBALL BOOTS

AGAIN

FROM

H. WHITE

Authorised Agent.

Stocked in 4 different widths, and $\frac{1}{2}$ sizes.

PRICE 19/6.

Manfield Junior-Hotspur

From 13/-



As Supplied
by US to the
Luton Town F.C.
again this Season.

(They Knew the Best.)

*Clubs supplied on Special Terms
with all the Best Brands.*

26-30, Manchester St., Luton.

Last Season's Record.

THE LEAGUE: DIV. III.

Position in Table: 5.

	Goals						
	P	W	L	D	F	A	P
Home	21	14	3	4	47	18	32
Away	21	7	10	4	21	31	17

Totals 42 21 13 8 68 49 49

CUP TIE.

Away 1 0 1 0 1 2 —

FRIENDLIES.

Home 1 0 1 0 2 4 —

Away 2 1 1 0 4 4 —

Grand Totals 46 22 16 8 75 59 —

PLAYERS' APPEARANCES.

LEAGUE.—A. Tirrell 40, T. Gibbon 39, S. Hoar 36, G. Butcher 33, S. Reid 33, W. Clarkson 32, G. Lennon 31, W. Jennings 30, A. Roe 30, J. Walker 29, H. Higginbotham 23, W. Molyneux 23, R. Thompson 17, J. H. Foster 14, R. Hoten 12, R. Graham 9, T. Irvine 8, R. Reader 7, J. Stephenson 4, H. Mosley 3, R. Millar 2, H. Bailey 2, S. Bird, T. Cottingham, A. Brown, W. Henderson, C. Bonsall 1 each.

CUP TIE.—Gibbon, Lennon, Tirrell, Molyneux, Jennings, Roe, Hoar, Higginbotham, Walker, Butcher, Clarkson.

FRIENDLIES.—Watford, H. and A.; Kettering A. Graham, Tirrell, Hoten, 3 each; Gibbon, Foster, Jennings, Roe, Butcher, Henderson, Bonsall 2 each; Bailey, Molyneux, Walker, Millar, Hoar, Reader, Andrews, Brown, Reid, Clarkson.

GOAL SCORERS.

LEAGUE.—S. Reid 18, H. Higginbotham 10, R. Hoten 8, G. Butcher 7, R. Thompson 7, S. Hoar 7 (four penalties included), W. Clarkson 3, A. Tirrell 2, A. Roe, W. Molyneux, J. R. Walker, J. H. Foster, W. Jennings, C. Bonsall 1 each; total 68.

CUP TIE.—Tirrell (penalty). FRIENDLIES.—Hoten (2), Reid, Foster, Henderson, Hoar (penalty).

BRIGHTEST AND BEST
FOOTBALL REPORTS.

SPECIAL COMMENTS ON
ALL LUTON TOWN GAMES.

EXCLUSIVE CRITICISMS OF
ALL LEAGUE MATCHES.

SEE . . .

Lloyds

Sunday

News

NOTED FOR THE EXCELLENCE
OF ITS SPORT SERVICE.

TOWN RESERVES.

SOUTHERN LEAGUE.

Position in League Table:

	P	W	L	D	Goals		P
Home	19	13	1	5	48	14	31
Away	19	3	10	6	20	42	12
Total	38	16	11	11	68	56	43

PLAYERS' APPEARANCES.

R. Millar 34, T. Irvine 30, J. Stephenson 29, R. Reader 25, R. Graham 25, A. Brown 26, T. Parker 22, J. H. Foster 20, H. Bailey 20, S. Bird 16, R. Thompson 13, J. Grubb 12, W. Molyneux 12, J. R. Walker 10, W. Dormer 10, T. Cottingham 9, W. Clarkson 8, W. Jennings 7, S. Reid 7, W. Henderson 6, A. Woodcroft 5, C. Bonsall 4.

Twenty players have taken part in three or fewer games.

GOAL SCORERS.

Irvine 13, Thompson 7, Molyneux 7, Brown 6, "Newman" 5, Reader 4, Millar 4, Reid 3, Henderson 3, Stephenson 3 (penalties), "Edwards" 2, Parker 2, Barrett 2, Butcher, Andrews, Walker, Jennings, Cottingham, Dormer and Marshall (through own goal).

FRIENDLIES.

Appearances.—Millar 6, Foster 5, Graham 5, Parker 5, Cottingham 4, Brown 4, Bailey 4, Stephenson 4, Irvine 3, Barrett 2, Clarke 2, H. Lawson 2, Reader 2, Dormer 2, Grubb 2, Bird 2, Odell 2.

Scorers.—Clarke 3, Parker 2, Cottingham 2, Barrett, Brown, Irvine, Thompson; total 11.

GET
THE SATURDAY TELEGRAPH
FOR
Latest Football Results and Reports.



WHICH IS THE MOST POPULAR TEAM?

My boy, I really can't say. But I'll tell you which is the most popular cigarette—SUNRIPE. And their popularity is well merited—exquisite flavour, fine delicate aroma, EXTRA SIZE, and popular price. Every "thinking" cigarette smoker asks for SUNRIPES—he knows he's buying a real satisfying and enjoyable smoke.

SUNRIPE

THE EXTRA SIZE

CIGARETTES

'For Size & Tone, They Stand Alone'

10 for 6^d

20 for 1/-
also 50's

* THE SPINET HOUSE ESTD 148 Years LONDON

MEN WHO HAVE PLAYED FOR LUTON

Since Professionalism was adopted.

1891-2: J. Burley; Sanders, Hoy; Wright, Paul, Taylor, E. H. Lomax; F. K. Whitby, Deacon, C. Lomax, Ocle, H. Whitby, Cheshier.

1892-3: Burley, T. Read; Sanders, Hoy, George, Wilson; Wright, Julian, Taylor, Watkins; Brown, Cheshier, Allen, H. and F. Whitby, Barbour, Galbraith, J. McKenzie, Kirk.

1893-4: Bee; Cheshier, Wilson, C. Reed; Watkins, Julian, Taylor; H. Whitby, Allen, Galbraith, Finlayson, Vickers, J. Dimmock, Brown, Hayes.

1894-5: Bee; Cheshier, McCartney, M. D. Nicholson, McEwen, Watkins, McCrindle, Howe, Collins; Brown, Gallacher, Galbraith, Prentice, Allen, Dimmock, Jack.

1895-6: Jack, Russell, Williams; Stirton, M. D. Nicholson, McCartney, McEwen, Watkins, Stewart, Docherty; Gallacher, Finlayson, Galbraith, Parkinson, Birch, Ekins, Coupar, Dimmock.

1896-7: Williams; Davies, McCartney, McEwen; Perrins, Stewart, Docherty, Watkins; Gallacher, Finlayson, McInnes, Galbraith, Birch, Coupar, Ekins, Dimmock, Brown.

1897-8: Williams; McCartney, McEwen; Davies, Stewart, Docherty, Perrins; Gallacher, Coupar, Birch, Clarke, Donaldson, Little, McInnes, Ekins, Durrant.

1898-9: Perkins; H. Williams, Moore, Dow; C. Ford, Clark, Sharp, Crump; Durrant, Hewitt, W. Ford, Kemplay, Draper, McInnes, Brock, Ekins.

1899-1900: Daw; Dow, McCurdy; Morrison, Stewart, Brown, Williams, Rally; Inglis, Brock, Fairgrieve, Draper, McInnes, Eckford.

1900-1: Monks; Ord, Lindsay, McCurdy; Clifford, Holdstock, Williams, Cox; Brown, Blessington, Molyneux, Burbage, Dempsey, Tierney, Saxton, Durrant.

1901-2: Ord; Lindsay, Sharp, Street; F. Hawkes, White, Williams, R. Hawkes; Durrant, Blessington, Brown, Barker, Tierney, Colvin.

1902-3: Frail; Lindsay, Sharp, Hood; F. Hawkes, White, Williams, R. Hawkes; Durrant, Blessington, Hilsdon, Moody, Davidson, Gall, Allsop.

1903-4: Thompson; Bennett, McEwen; F. Hawkes, White, R. Hawkes, Williams; Durrant, Eaton, McKee, Storey, Moody, Allsopp, Griffiths, Madden.

1904-5: Lindsay; Turner, McEwen, J. Dow; F. Hawkes, White, R. Hawkes, Pritchard, Williams; Eaton, Ross, Lamberton, Penman, Moody, Wallace, Barnes.

The "Dujon" Restaurants.

GOOD QUALITY.
:: COMFORT. ::
GOOD SERVICE.

*Special Quotations given to Football
Teams.*

54, George Street, LUTON

AND

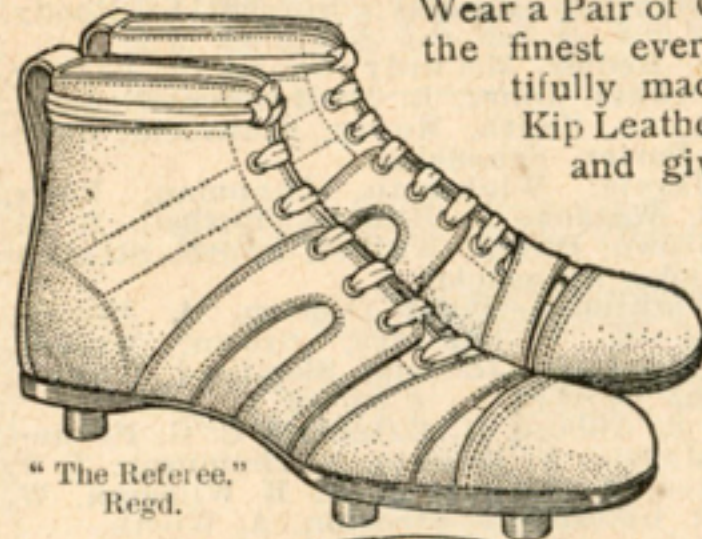
34, High Street, BEDFORD

1905-6: Platt, H. Farr; Blackett, McCurdy, J. Dow, Else, Watkins; F. Hawkes, White, R. Hawkes, Gallacher; Warner, Macdonald, Brown, E. Dobson, Pickering, Barnes, Latheron.
1906-7: Platt, H. Farr; Hogg, Jackson, McCurdy; F. Hawkes, White, R. Hawkes, Jones, Gallacher, Warner, Schofield, Macdonald, Brown, Murphy, E. Dobson, Gittins, Pickering, Barnes, Fitzpatrick, Latheron.
1907-8: Platt, Jarvis, H. Farr; Hogg, Nicholson, Dimmock, McCurdy; F. Hawkes, Jones, White, R. Hawkes; Rankin, Walders, Rigate, Hall, Brown, Pearson, Farrant, Moody, Latheron.
1908-9: Platt, Jarvis; Dimmock, McCurdy, Gregory, Chapman; F. Hawkes, Jones, R. M. Hawkes, White; Brown, Rigate, Haycock, Menzies, Bradley, Stansfield, Moody, Johnson.
1919-10: Jarvis, Fry; Hedley, McCurdy, Chapman, Rayner, Ruffett, Potts; F. Hawkes, Jones, R. M. Hawkes, Slennett, Trueman; Brown, Quinn, Smith, Moody, Stansfield, Johnson, Divine, Moore, Porter, Schofield.
1910-11: Naisby, Jarvis; Wightman, Chapman, Potts, Webb, J. Ashton, C. Watson; F. Hawkes, Bushell, R. M. Hawkes, Johnson, Brown, Quinn, Walker, Smith, Stephenson, Moody, Lashbrooke, Stansfield.
1911-12: Naisby; Wightman, Potts, Ashton, A. Brown; F. Hawkes, Bushell, R. M. Hawkes, Brown, Walker, Stephenson, Moody, Stansfield, Johnson, Shepherd, Walden, Lashbrooke, Streeton.
1912-13: J. W. Day, R. Abbott, H. Bateman; C. G. Henderson, E. J. Potts, J. Jarvie; F. Hawkes, S. Thompson, T. T. Wilson, R. M. Hawkes; J. Stephenson, A. H. Wileman, W. Smith, J. Murphy, B. Holland, T. Streeton, A. Worth.
1913-14: J. T. Mitchell, R. Abbott; J. R. Elvey, J. Robinson, J. Jarvie; F. Hawkes, R. W. Frith, R. M. Hawkes, T. T. Wilson, M. Donaghy, E. Stevens, A. F. Durrant, A. H. Wileman, E. Simms, R. Brewis, F. Rollinson, J. Wilkie, S. Hoar.
1914-15: J. T. Mitchell, R. Abbott; J. R. Elvey, J. Dunn, J. Robinson, E. J. Potts; F. Hawkes, R. W. Frith, R. M. Hawkes, T. T. Wilson, E. G. Needham, J. Brandham; H. P. Roberts, R. N. Macfarlane, A. H. Wileman, A. Roe, E. Simms, W. Heath, F. Rollinson, J. Chipperfield, F. Lindley, S. Hoar.

(War interval).

1919-20: P. Summers, R. Abbott, H. Whitehead, J. R. Elvey, J. Dunn, F. Hawkes, F. Hull; R. M. Hawkes, T. Urwin, J. Rutherford, T. Parker, J. Brandham, G. Bowler, P. Stewart; S. Hoar, W. J. Grimes, A. Roe, R. Tomlinson, D. Williams, E. Simms, L. Bookman, G. Dodd, F. J. Hensman, E. J. Seymour, H. Higginbotham, F. W. P. Hill

If you want to win—



"The Referee,"
Regd.

Wear a Pair of GAMAGE BOOTS
the finest ever produced. Beautifully made of Best Russet Kip Leather, supple and pliant, and giving perfect wearing comfort. Special instep and ankle supports. Rounded soles, preventing clinging of mud and turf. The Ideal Boot. All sizes and half sizes for men, 6 to 11.

16/9

Post Free.

GAMAGES

THE PREMIER SPORTS HOUSE OF THE WORLD.
Whatever you want in the way of Football Kit—
get it at Gamages and GET THE BEST.

GAMAGES, HOLBORN, LONDON, E.C.1.
City Branch: Benetfinks, Cheapside, London, E.C.2

1920-21: H. Bailey, J. M. Watson, R. Abbott; G. Lennon, A. Tirrell, J. Semple, F. Hull, A. Reynolds, F. J. Hensman; A. Roe, T. Parker, W. Molyneux, J. W. Lamb, H. L. Cockerill, L. R. Bayliss, W. Walsh, P. Stewart; S. Hoar, H. Higginbotham, G. Butcher, F. W. P. Hill, E. Simms, A. Mathieson, L. Bookman, H. Sidney, J. Shankland, J. McKechnie, J. Bradley.

1921-22: H. Bailey, T. Gibbon; A. Tirrell, G. Lennon, R. C. Graham, F. Hull, J. Stephenson; J. H. Foster, A. Roe, J. R. Walker, W. Molyneux, T. Parker, W. Walsh, R. Millar; E. J. Bassett, S. Hoar, H. Higginbotham, S. Reid, E. Simms, A. Mathieson, G. Butcher, L. Bookman, H. Sidney, J. Hall, H. S. Jephson.

1922-23: T. Gibbon, H. Bailey, S. Bird; G. Lennon, A. Tirrell, J. Stephenson, R. Graham; W. Jennings, A. Roe, J. Walker; W. Molyneux, J. H. Foster, R. Millar, A. Brown, T. Parker; S. Hoar, G. Butcher, S. Reid, W. Clarkson, H. Higginbotham, R. Thompson, R. Hoten, T. Irvine, R. Reader, T. Cottingham, W. Henderson, C. Bonsall, J. Grubb.

ALL THE F.A. CUP WINNERS—Contd. from page 13.

- 1905-6.—Everton beat Newcastle United (1-0).
- 1906-7.—Sheffield Wednesday beat Everton (2-1).
- 1907-8.—Wolverhampton W. beat Newcastle U. (3-1).
- 1908-9.—Manchester United beat Bristol City (1-0).
- 1909-10.—Newcastle U. beat Barnsley (2-0) after draw (1-1).
- 1910-11.—Bradford City beat Newcastle U. (1-0) after draw (0-0).
- 1911-12.—Barnsley beat W. B. Albion (1-0) after draw (0-0).
- 1912-13.—Aston Villa beat Sunderland (1-0).
- 1913-14.—Burnley beat Liverpool (1-0).
- 1914-15.—Sheffield United beat Chelsea (3-0).
- 1915-16, 1916-17, 1917-18, 1918-19.—No competition.
- 1919-20.—Aston Villa beat Huddersfield (1-0) after extra time.
- 1920-21.—Tottenham beat Wolverhampton Wan. (1-0).
- 1921-22.—Huddersfield Town beat Preston North End (1-0).
- 1922-23.—Bolton Wanderers beat West Ham (2-0).

DO YOU FEEL A COLD COMING ON ?

IF SO, TAKE A DOSE OF

DR. BROWNE'S INFLUENZA & COLD CURE.

In bottles at 1/3, from COCKER'S,
and **DON'T** delay.

Bring your Photo Films to us to
— Develop and Print. —

All kinds of Kodaks & Brownies in stock.

H. E. COCKER, M.P.S.,

Pharmaceutical Chemist,

KENILWORTH PHARMACY,
DUNSTABLE ROAD, LUTON.

(Corner of Kenilworth Road).

ALL THE F.A. CUP WINNERS.

- 1871-2.—Wanderers beat Royal Engineers (1-0).
1872-3.—Wanderers beat Oxford University (2-0).
1873-4.—Oxford University beat Royal Engineers (2-0).
1874-5.—R.E. beat Old Etonians (2-0), after a draw.
1875-6.—Wanderers beat Old Etonians (3-0) after a draw.
1876-7.—Wanderers beat Oxford University (2-0).
1877-8.—Wanderers beat Royal Engineers (3-1).
1878-9.—Old Etonians beat Clapham Rovers (1-0).
1879-80.—Clapham Rovers beat Oxford University (1-0).
1880-1.—Old Carthusians beat Old Etonians (3-0).
1881-2.—Old Etonians beat Blackburn Rovers (1-0).
1882-3.—Blackburn Olympic beat Old Etonians (2-1).
1883-4.—Blackburn Rovers beat Queen's Pk., Glasgow (2-1).
1884-5.—Blackburn Rovers beat Queen's Pk., Glasgow (2-0).
1885-6.—Blackburn Rovers beat W. B. Albion (2-0) after
draw).
1886-7.—Aston Villa beat West Bromwich Albion (2-0).
1887-8.—West Bromwich Albion beat Preston N. E. (2-1).
1888-9.—Preston N. E. beat Wolverhampton Wan. (3-0).
1889-90.—Blackburn Rovers beat Sheffield Wednesday (6-1).
1890-1.—Blackburn Rovers beat Notts County (3-1).
1891-2.—West Bromwich Albion beat Aston Villa (3-0).
1892-3.—Wolverhampton Wanderers beat Everton (1-0).
1893-4.—Notts County beat Bolton Wanderers (4-1).
1894-5.—Aston Villa beat West Bromwich Albion (1-0).
1895-6.—Sheffield Wednesday beat Wolves (2-1).
1896-7.—Aston Villa beat Everton (3-2).
1897-8.—Notts Forest beat Derby County (3-1).
1898-9.—Sheffield United beat Derby County (4-1).
1899-1900.—Bury beat Southampton (4-0).
1900-01.—Tottenham beat Sheffield U. after a draw (2-2)
(3-1).
1901-2.—Sheffield U. beat Southampton, after draw (1-1)
(2-1).
1902-3.—Bury beat Derby County (6-0).
1903-4.—Manchester City beat Bolton Wanderers (1-0).
1904-5.—Aston Villa beat Newcastle United (2-0).

(Continued on page 11).

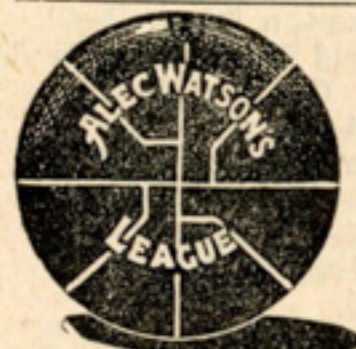
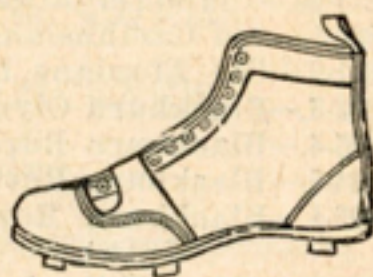


ALEC WATSON'S, Ltd.

Famous Football Outfits

All Club Secretaries should write at once for our
1923-24 FOOTBALL CATALOGUE (with coloured Jersey
 sheet) Post Free. **IT WILL PAY YOU!**

We hold the largest stocks of
Jerseys, Knickers,
Hose, Sweaters, Bags,
Boots, Shin Guards,
Goal Nets, etc., in
England.



A. W. Ltd.

FAMOUS FOOTBALLS.

The

"Special League"

as used by Manchester City, Manchester United, and
 many League Clubs.

Size 5	12/-	Best Quality	...	16/6
" 4	11/-	" "	...	15/6

All Hand-sewn. POST FREE.

Note the Address:
39, PICCADILLY, MANCHESTER.

F.A. CUP EXEMPTIONS, 1923-24.

560 clubs have entered for the F.A. Cup Competition, Portsmouth and Rotherham County, who were exempted until the Competition proper last season, have been replaced by Charlton Athletic and Swansea. There are three classes of exemptions, which operate as follows:

Fifty-two clubs excused the qualifying rounds: Arsenal, Aston Villa, Barnsley, Birmingham, Blackburn Rovers, Blackpool, Bolton Wanderers, Bradford, Bradford City, Bristol City, Brighton and Hove Albion, Burnley, Bury, Cardiff City, Charlton Athletic, Chelsea, Clapton Orient, Corinthians, Crystal Palace, Derby County, Everton, Fulham, Huddersfield Town, Hull City, Leeds United, Leicester City, Liverpool, Luton Town, Manchester City, Manchester United, Middlesbrough, Millwall, Newcastle United, Nottingham Forest, Notts County, Oldham Athletic, Plymouth Argyle, Preston North End, Queen's Park Rangers, Sheffield United, Sheffield Wednesday, Southampton, South Shields, Stoke, Sunderland, Swansea Town, Swindon Town, Tottenham Hotspur, Watford, West Bromwich Albion, West Ham United, Wolverhampton Wanderers.

Twenty-four clubs excused until Fifth Qualifying Round: Accrington Stanley, Brentford, Bristol Rovers, Chesterfield, Coventry City, Crewe Alexandra, Darlington, Gillingham, Grimsby Town, Halifax Town, London Caledonians, Merthyr Town, Nelson, Northampton Town, Norwich City, Portsmouth, Port Vale, Reading, Rotherham County, Stalybridge Celtic, Stockport County, Walsall, Wigan Borough, Wrexham.

Twenty-four clubs excused until Fourth Qualifying Round: Aberdare Athletic, Ashington, Barrow, Bishop Auckland, Blyth Spartans, Bromley, Carlisle United, Clapton, Dulwich Hamlet, Exeter City, Hartlepool United, Ilford, Lincoln City, New Brighton, Newport County, Nunhead, Rochdale, Shildon, Sittingbourne, Southend United, Southport, St. Albans City, Tranmere Rovers, Worksop Town.

The winners in the Fifth Qualifying Round will be drawn to meet in the Sixth, and the 12 winners of the latter enter the competition proper.

BOROUGH ENGINEERING WORKS, LTD.,

LUTON.

ASHTON ROAD, FOR

Castings of all kinds.

45, CASTLE STREET, FOR

Electric Lighting & Power.

Wireless Sets & Accessories.

TELEPHONE 646.

CUP FINAL ATTENDANCES.

The following figures give the attendances at the Football Association Cup Finals for the last twenty-five years:

Year.	Ground.	Clubs.	Attendance.
1895	Crystal Palace	Aston V. v. W. Bromwich A. ...	42,560
1896	"	Sheffield W. v. Wolves	48,836
1897	"	Aston Villa v. Everton	65,891
1898	"	Notts Forest v. Derby County...	62,017
1899	"	Sheffield U. v. Derby County...	73,833
1900	"	Bury v. Southampton	68,945
1901	"	Tottenham H. v. Sheffield U. ...	110,820
1902	"	Sheffield U. v. Southampton ...	76,914
1903	"	Bury v. Derby County	63,102
1904	"	Manchester City v. Bolton W....	61,374
1905	"	Aston Villa v. Newcastle U. ...	101,117
1906	"	Everton v. Newcastle United ...	75,609
1907	"	Sheffield W. v. Everton	84,584
1908	"	Wolves v. Newcastle United ...	74,967
1909	"	Manchester U. v. Bristol C. ...	71,401
1910	"	Newcastle United v. Barnsley...	77,747
1911	"	Bradford City v. Newcastle U.	69,098
1912	"	Barnsley v. W. Brom. Albion...	54,556
1913	"	Aston Villa v. Sunderland	121,919
1914	"	Burnley v. Liverpool	74,093
1915	Manchester	Sheffield United v. Chelsea	49,557
1920	Chelsea	Aston Villa v. Huddersfield ...	50,018
1921	"	Tottenham H. v. Wolves	72,805
1922	"	Huddersfield v. Preston N.E. ...	53,710
1923	Wembley	Bolton W. v. West Ham U. ...	126,047

Interesting Facts about the Cup.

The present F.A. Cup is the third trophy that has been provided.

The first was stolen from the window of a tradesman's shop in Birmingham, where it was being exhibited by the Villa after their victory in the Final of 1894-95.

The second was presented to the late Lord Kinnaird in 1911 in recognition of his services as President of the Football Association for twenty-one years.

The third is in the possession of the Bolton Wanderers Football Club, who vanquished West Ham in the memorable Final at the new Wembley Stadium last season, and must be returned by them to the Football Association not later than February 1st, 1924.

Preston North End share with Aston Villa the distinction of having won both the F.A. Cup and the Championship of the League in the same season.

The rule that an extra half-hour should be played in the Cup Final in the event of a draw came into force in 1912.

West End Motors ^(Luton) LTD.

SOLE DISTRICT AGENTS FOR
CARS.

Hudson	Lagonda	Buick
Essex	Marseal	Singer
Chevrolet	Austin	Coventry Premier

MOTOR CYCLES.

O.K. Junior Francis Barnett

Catalogues, Demonstrations and full particulars on request.

HIRE CARS.

We have a perfect Hire Service; all new luxurious private cars, beautifully upholstered, and driven by careful and expert men.

REPAIRS.

We have a fully experienced staff in our repair shops and all work is carried out under personal supervision at a minimum of cost.

WIRELESS.

Our Showroom is now open daily for demonstrations. We quote for any type, pattern or make. Efficiency guaranteed. Spare parts in stock.

**233, Dunstable Road,
LUTON.**





For tone,
quality,
and
delicacy of
touch—

There is nothing better
— than the —

CHAPPELL

Sole Agents:

S. FARMER & CO.,

- 2, Wellington Street & -
83, George Street, Luton.

PIANOS OF QUALITY.

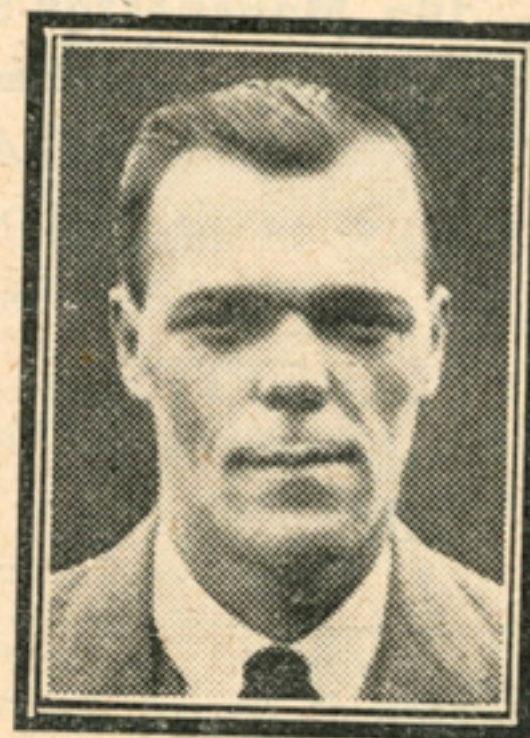


THOS. GIBBON
(Goalkeeper).

Third season. Born at W. Hartlepool. Came into prominence with Southampton during the war, after which he played with Merthyr Town and Dundee. Was reserve to Bailey in his first season here, but won his place after two games last season, and kept it. Is a capable cricketer as well as a fine goalkeeper. 5ft. 9ins.; 11½st.

WM. VEITCH SHEPHERD
(Goalkeeper).

Recruit. Born at Sunderland a few more than twenty years ago. Figured in Newcastle United's goal in late war-time. Became better known when signed by Ashington, for whom he played for two seasons. Wanted to leave last year, but Ashington put a gilt-edge on him. Was more successful this season. 5ft. 9½ins.; 11½st.



Many years ago my greatest pleasure was **Booting a Ball.** To-day my greatest pleasure is **SATISFYING A CUSTOMER.**

TOBACCO
CIGARETTES
CIGARS

JOHN M. DOW

19a, Manchester St., LUTON.

MY SPECIALITIES:

PIPES. Suitable for Prizes or Presentation.
My Famous 2/6 Special.

CIGARETTES.

My Special Virginia, 1/3, 25 ; 2/6, 50.

TOBACCO.

My Special Mixture, 2/-, 2-oz ; 4/-, 1/4-lb.

Agent for:

Dunhill, Barling, Loewe, Ben Wade, G.B.D.,
Tetley's Tobaccos.



ALFRED TIRRELL
(Full Back).

Fourth season. Desborough born, and his abilities first recognised by Kettering, then by West Ham United, for whom he played six seasons. Got his place and the captaincy in second League game after arriving at Luton, and retained both. Big and strong, but fair as any back playing. May be slow, but has fine judgment. 5ft. 11 1/2 ins.; 13st.



ROBERT C. GRAHAM
(Full Back).

Third season. Native of Muirkirk, Ayr. Discovered by Luton when he was with Kilwinning Rangers, and after apprenticeship with Reserves, got a regular place in the first team at the end of last season. Kicks well with either foot, has acquired some of Tirrell's judgment, is fast, fair, and strong. 5ft. 11in.; 12st.

Your First Fixture should be with the New Hudson Depot

Start the season on right lines—go straight to the New Hudson Depot for your Football Outfit. Our practical sporting experience assures satisfaction to the keenest buyers. The New Hudson range of Football goods for the coming season is like an open goal—it should not be missed on any account.

BETTER GOODS--BETTER PRICES--BETTER SERVICE



JERSEYS.

Prices per doz.—

Men's, stripes or
selfs, 28/- to 56/6

Manchester.

Men's - 35/6 to 52/6

Aston Villa.

Men's - 35/- to 50/-

Bradford.

Men's - 38/6 to 46/-

SECRETARIES!

Write for
Price List.

FOOTBALLS.

"Improved T" ...	22/6
"League King" ...	23/6
"Fanny Walden" ...	21/-
"Goalfinder" ...	21/-
"Referee" ...	17/6
"Regimental" ...	13/6
"Champion" ...	10/6
"Rival" ...	9/6
"Elite" ...	8/6



KNICKERS.

With elastic tops
and hip pockets.

Per pair.

Men's White -	2/-
" " -	2/3
" " -	2/9
" " -	3/9
Men's Navy -	2/3
" " -	2/6
" " -	3/-
" " -	4/-



This Ball supplied by us
to the Luton Town F.C.

SPECIAL TERMS
to all
Clubs.

10, 12, Chapel Street, Luton



JOSEPH TILL
(Full Back).

Recruited from St. Mirren at a fee, but is a native of Stoke-on-Trent. Attracted notice by abilities in Army football, and was signed by Dumbarton. After one season was secured by St. Mirren for £975. Played regularly for both teams in Scottish League, Division I. Wanted to move after one season, but fee was prohibitive, so remained two. Fine back, sure-footed, strong and judicious. Hopes to settle in comfort with Luton and help them into Division II. 5ft. 7½ins.; 12st.

JOHN PEARSON
(Full Back).

Recruited from Tottenham Hotspur, whither he went in 1913 from Arbroath. During the war served in the Navy. Had benefit with "Spurs" last season, and hopes to remain long enough at Luton to do likewise. Is big back, relying more on his judgment than on speed. Has figured chiefly with 'Spurs' Reserves. 5ft. 9ins.; 12st.



PHONE 188

Burgess', Gold Medal Mineral Waters



LUTON

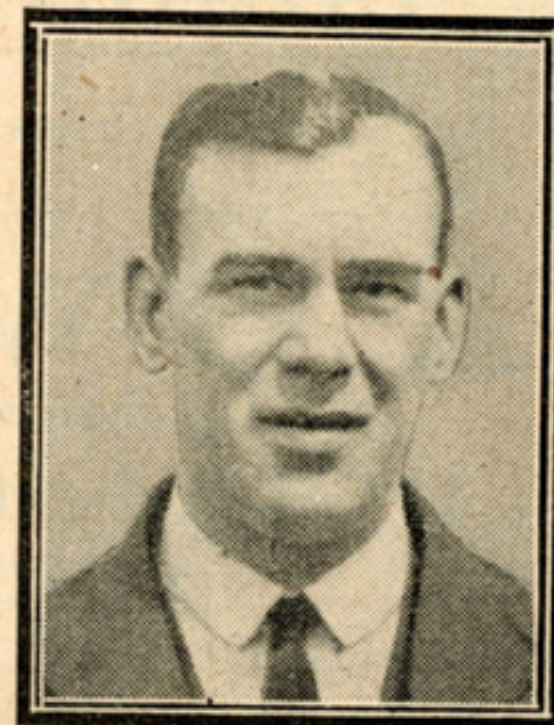


ROBERT ANDERSON
(Full Back).

Recruit. Native of Ardrossan, Ayrshire, this is his first season as a professional. First played for Saltcoats, then Dreg-horn Juniors, and was with Ardrossan Winton Rovers last season. Although on small side, is clever and fast, and was sought by many clubs, but preferred to come to Luton with his clubmate Kerr. 5ft. 6ins.; 10½st.

JOHN HENRY FOSTER
(Half-back).

Third season. Born at Barnsley, and played with Barnsley Reserves, then for Worksop, and afterwards for Notts County as a centre-half. Has served Luton well, and not been too fortunate. Strong and fearless, can hustle, but there is no more genial exponent of football. Generally seen at right-half, but best position is centre-half. 5ft. 11ins.; 12st.



Go there by Charabanc.

Football Clubs should note that there is no cheaper way than travelling to their away matches than by the

LUTON BELLE

CHARABANC

Special low terms to all Clubs.

Ask for particulars of

A. E. WHITE,

Tobacconist,

41, Manchester Street,
LUTON.

Public Phone 31.

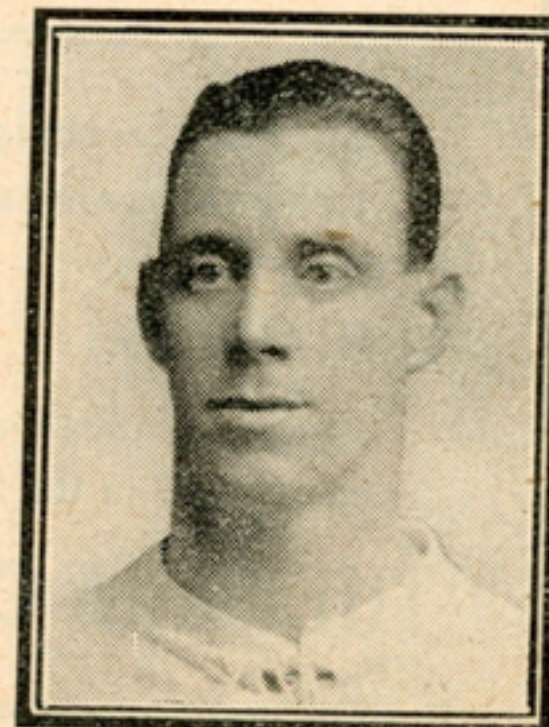


WM. MOLYNEUX
(Half-back).

Fourth season. A native of St. Helens, not Wigan. Was embarked on a career at Norwich, but was stopped that. Arriving at Luton he set about winning position in the first XI., and he and Foster have had it between them. As bright a nature on the field as off, and has improved immensely in nursing forwards. 5ft. 7ins. 12st.

WM. JENNINGS
(Centre Half-back).

Second season. Native of Cinderhill, Nottingham. Played for Arnold St. Mary's before going to Notts County, thence to Norwich, and after two seasons as captain of Merthyr Town, he came to Luton last season. Tallest of Luton's players, he took some time to win his position in first XI., but could not be moved afterwards. Is an inspiration to his own side and an awkward customer to the opposition. Was reported to be going elsewhere, but has chosen to stay. 6ft.; 12½st.



THE Daily Chronicle

is renowned for
its service of ::

FOOTBALL NEWS

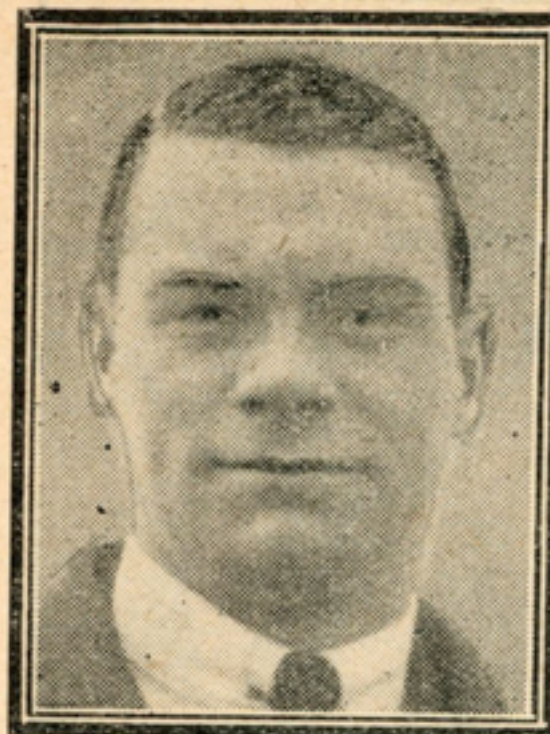
which is in the hands of expert
writers and unrivalled critics.

Special Descriptions of big
League Games written by

"CORINTHIAN," "SARACEN,"
"TROJAN" and J. A. McWEENEY

appear throughout the season
exclusively in the Sports pages of

"THE DAILY CHRONICLE."

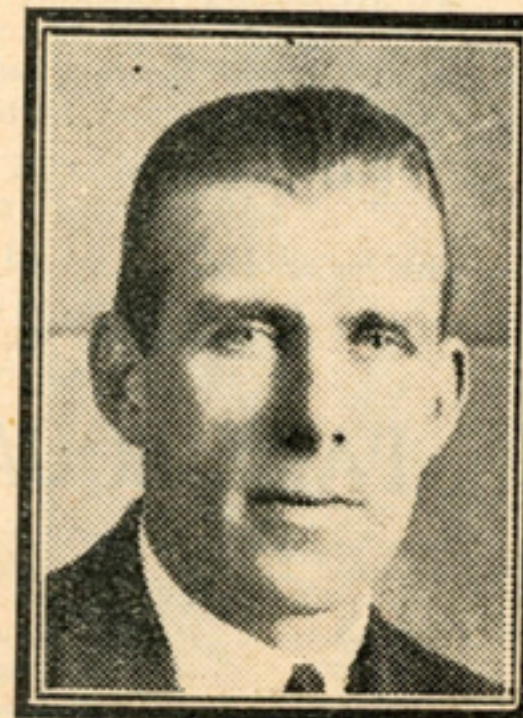


JAMES R. WALKER
(Centre Half-back).

Third season. Native of Port Glasgow, was captain of Kilbarchan Athletic when discovered by half-a-dozen clubs, but Luton got him. Is brilliant defensive half, is fast and clever, and will challenge for a regular place in the first team, to which many feel he is entitled. Is scrupulously fair, and a very steady fellow. 5ft. 8ins.; 11½st.

ARTHUR ROE
(Half-back).

Eighth season. Discovered by a Lutonian, he came from South Normanton, Derbyshire, as a forward. Played in all middle line and forward positions before he became outstanding as left half for Town's first team. Is an example of true sportsmanship, and his footwork is nearest approach to Bob Hawkes' that could be wished. Gets a benefit this season. 5ft. 9ins.; 12st.



LET US QUOTE YOU



We are actual Manufacturers of Medals and Cups and can quote you something under the usual prices. Compare our Finish and Value with those of any other Manufacturer.

We make a speciality of Club and League Medals. Let us design one for you.

Write for our Lists. Special discount is given to Clubs.

HINDS
LIMITED
5, PARK SQUARE, LUTON.

Branches at Hammersmith, Woolwich, Lewisham, Clapham Junction, Croydon, Reading, Chatham, Wood Green, and Southampton.

Wholesale—37, HATTON GARDEN, LONDON, E.C.1.
ESTABLISHED 1856.



ROBERT MILLAR
(Half-back).

Third season. Came as a youngster from Dalry, Ayr, as a centre-half, but settled at left half, and has given splendid service in the Reserves. Has shown much improvement all round, and is only out of first team by reason of Roe's consistency. 5ft. 10ins.; 12st.

SIDNEY HOAR
(Outside Right).

Ninth season, yet still well on the right side of 30. Leagrave born. Reached Luton Town via Toddington and Luton Clarence. Began last season under cloud of ill-health, but recovered, and was doing as well as ever at end. Formerly outside left. 5ft. 8ins.; 10½st.



TRAVEL THE "DIXIE" WAY

RELIABILITY.

Our policy is just the simple one—that if a vehicle is looked after it will not fail at the critical moment. All coaches are overhauled after every run, and those minor adjustments made which ensure that they are "Fit to take the road at any hour."

CAREFUL DRIVING.

We have always realised that to gain the confidence of the public careful driving must be a feature of our service. That is why only expert drivers are employed who take no risks but always remember the slogan, "SAFETY FIRST."

*SPECIAL QUOTATIONS
TO FOOTBALL CLUBS*

FULL PARTICULARS ON REQUEST.

Head Office: 65, CHEAPSIDE, LUTON
or Booking Offices: 10, Bridge St. and 5, Cromwell Rd.

LADIES' HATS

VELOURS, FELTS,
STRAWS, PANAMAS

REMODELLED

Into Newest Fashions
∴ equal to New. ∴

Gents' Velours

Save - and Felts - Save
Money a Speciality. Money

Trial Solicited.

LADIES' HAT-FIX Co.
1, CHEAPSIDE, LUTON.

Luton Town F.C. 1st XI. Fixtures, 1923-24 (Div. III.—Southern.)

Date.	Opponents.	Ground.	Goals		Date.	Opponents.	Ground.	Goals	
			For	Ag'st.				For	Ag'st.
1923.					1923.				
Aug. 25	Swansea Town	A	0	1	Dec. 29	Southend United	H	2	0
" 27	Northampton Town	H	2	1	1924.				
Sep. 1	Swansea Town	H	6	1	Jan. 5	Southend United	A	3	1
" 3	Northampton Town	A	0	2	" 12	F.A. Cup (1st Rd. Comp. Proper)			
" 8	Brentford	A	2	3	" 19	Gillingham	A	0	1
" 15	Brentford	H	4	0	" 26	Gillingham	H	2	0
" 22	Portsmouth	A	2	1	Feb. 2	Queen's Pk. Rangers	A	0	4
" 29	Portsmouth	H	0	2	" 9	Queen's Pk. Rangers	H	1	0
Oct. 6	Exeter City	A	2	1	" 16	Plymouth Argyle	A	0	4
" 13	Exeter City	H	6	0	" 23	Plymouth Argyle	H	2	1
" 20	Aberdare Ath.	A	1	2	Mar. 1	Newport County	A	3	0
" 27	Aberdare Ath.	H	4	1	" 8	Newport County	H	1	0
Nov. 3	Watford	H	0	1	" 15	Merthyr Town	H	2	1
" 10	Watford	A	1	2	" 22	Merthyr Town	A	1	0
" 17	Millwall	A	0	0	" 29	Charlton Athletic	H	2	2
" 24	Millwall	H	2	2	Apr. 5	Charlton Athletic	A	1	2
Dec. 1	*Bournemouth	H	1	1	" 12	Norwich City	H	4	0
" 8	*Bournemouth	A	0	1	" 18	Bristol Rovers	H	1	0
" 15	Reading	H	1	2	" 19	Norwich City	A	2	1
" 22	Reading	A	0	3	" 21	Bristol Rovers	A	1	1
" 25	Brighton and Hove	H	1	1	" 26	Swindon Town	H	3	2
" 26	Brighton and Hove	A	1	0	May 3	Swindon Town	A	1	1

* Indicates new club, and results here are those in matches with Bristol City last season

Read the
"Luton News."

GOOD HEALTH !

and the reason why is that he drinks

J.W.G.'s STINGO

A STRONG ALE OF FIRST-RATE QUALITY & EXCELLENCE



A DELIGHTFUL BEVERAGE

Obtainable from all Tenants and Agents,
and from

THE BREWERY :: LUTON.

PRICES ON APPLICATION.

Wootton & Webb

(Mr. F. H. WEBB, M.P.S., F.N.A.O.)

THE OPTICIANS



**Market Place,
— Luton. —**

'Phone 644.

G. A. WILD & SONS,

*Saddlers and
Sports Outfitters,*

14, Manchester Street, LUTON.

FOOTBALLS.

"Wylde"	...	26/6
"Premier"	...	23 6
"Zig Zag"	...	21/-
"Paragon"	...	17/6
Improved "T"	22/6 & 25/-	

JERSEYS.

Per dozen.

STRIPES	from 25/6 to 47/6
SELF	" 25/6 " 45/-
ASTON	
VILLA	" 29/6 " 60/-

BOOTS.

Per pair.

"Hotspur"	16/9 & 19/6
-----------	-------------

KNICKERS.

White or Navy	
from	... 2/- to 5/6

HOSE.

From	... 1/6 to 3/6
------	----------------

SHIN GUARDS.

Per pair.

1/-, 1/4, 1/11, & 2/6

BAGS.

12/6, 13/6, 16/6, 18/6, and 22/6 each.

And all Football Sundries a
Speciality.

Look at the Clubs who, year after year since 1904, have worn the Manfield-Hotspur continuously. The most famous of the world! The proportion of principal teams wearing the Manfield-Hotspur to any other is shown in striking figures. Of the 108 clubs in the English and Scottish Leagues, 80 play in "Manfield's."

Four widths. Half-sizes.

(Relative prices, Boys)

Manfield

Catalogues free, from
MANFIELD & SONS, Ltd.,
59 & 60,
ST. PAUL'S CHURCHYARD,
London, E.C.4

*Branches and Football
Boot Agencies all towns.*



(Post Free)

This mark on every Sole

**"MANFIELD-
HOTSPUR"**

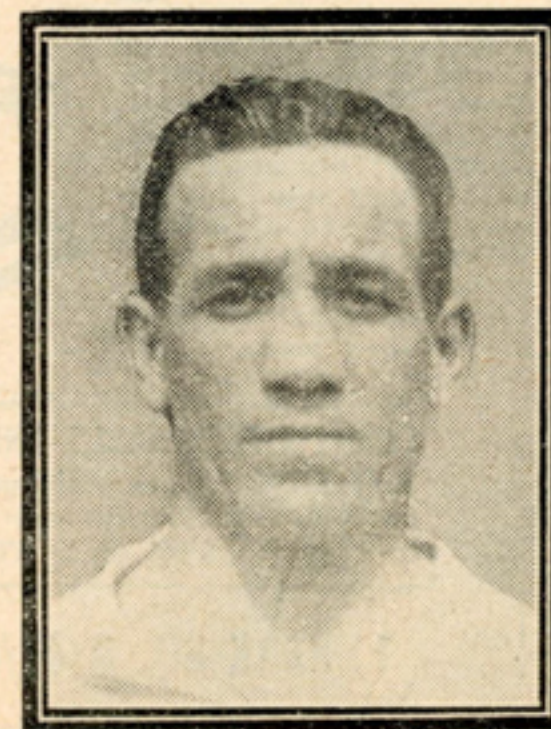


WM. HENDERSON
(Outside Right).

Recruited just before end of last season, after being with Arsenal a year. Carlisle his place of nativity; made name as centre-forward with Carlisle United, who got £1,000 from Arsenal for him. Believed to be better outside right. Plenty of speed; is steady, quiet fellow. 5ft. 9ins.; 11½st.

GEORGE BUTCHER
(Inside Right).

Fourth season. London born, but became footballer at St. Albans, where he attracted attention of West Ham United. Played ten seasons and had benefit from "Hammers," but hankered after Luton many seasons. Very tricky, fast, and plenty of stamina, and keeps in fine fettle by regular boxing training. 5ft. 6ins.; 10st.



**GREAT
 GRAMOPHONE
 VALUES**

**MAKE
 HAPPY
 HOMES.**



MODELS
from
39/6

Unparalleled Bargains are offered in our Gramophone Dept. Whether considered on the basis of design, finish, equipment or price, our models must stand out pre-eminent above all others. Compare them in detail with higher-priced machines elsewhere and you will select ours on their merits.

CURRY'S FOOTBALLS AND SPORTS GOODS.

An excellent range of the usual high-class Curry quality offered at the very lowest Curry price.
SEE OUR STOCKS.

LOCAL
 DEPOTS: **1, PARK SQ. & 47/49 MANCHESTER ST.**

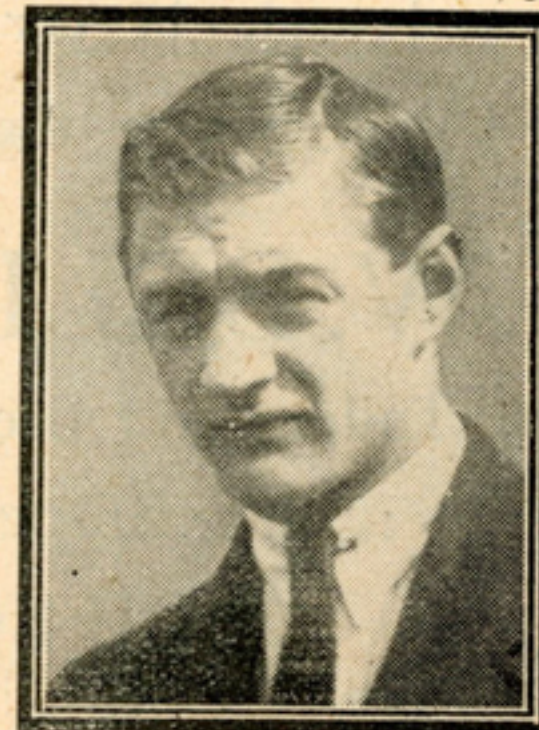


JOHN GREEN
 (Inside Forward).

Recruit. Born at Blackburn, Lancs. Played a little while with famous Rovers. Thence to Fleetwood, from whence to Notts Forest at a big fee. After two seasons with Forest comes to Luton. Is reputed to be good outside right. Sturdy, fast, and good shot. 5ft. 9ins.; 11st. 8lbs.

SIDNEY REID
 (Centre-Forward).

Third season. Born at Troedyrhiw, which means Wales, and discovered when playing with stars of the village. Became successor to Ernest Simms and scored 18 goals last season. Is packet of strong, harrying stuff, fine shot, still a boy, and should develop immensely. 5ft. 6ins.; 11st.



40 YEARS'

PRACTICAL EXPERIENCE in the
Making of Gentlemen's Tailoring.



From the cutting to the finishing our
garments are under personal supervision
and made in our own workshops.



W. BELL & SON,
Tailors and Breeches Makers,
: 22, Chapel Street, :
LUTON.



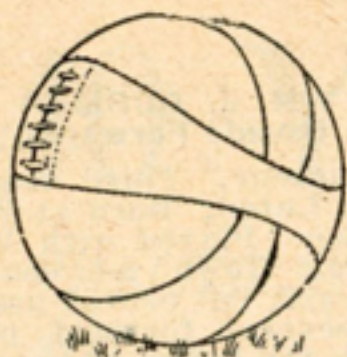
WM. J. DORMER
(Inside Forward).

Amateur. Third season with Luton. Born at Wolverton. Played with Wolverton Town as centre-forward, but proved useful in several forward positions for Luton. Is young enough to develop into class player. 5ft. 8ins.; 10½st.

ANDREW KERR
(Centre-Forward).

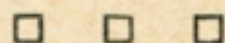
Recruit. Born at Falkirk, but football fame was won by playing with Ardrossan Winton Rovers, for whom he scored half-a-century of goals last season. Is a strong type, exceedingly quick on the ball, and a deadly shot. 5ft. 8ins.; 11st. 10lbs.





Footballs

YOU CAN
RELY UPON.



Riley's Footballs

Bear three qualities which give them
pre-eminence over other makes:

Best Leather Best Workmanship
Prices which stand Comparison

*All RILEY'S Football Goods are of
the same High Standard and are
backed by an all-round guarantee.*

**SEND FOR WINTER
SPORTS CATALOGUE**

E. J. RILEY, Ltd.

**Willow Mills,
ACCRINGTON.**

Telegrams — "CRICKET."



RALPH HOTEN
(Inside Left).

Recruit last March. Born at Pinxton, Derbyshire, where, as a youngster, his work attracted Notts County. From Nottingham went to Portsmouth, which club got Tom Parker in exchange. Scored 8 goals in 12 games for Luton. Is fast, clever, and strongly built, and favourite with Luton crowd. 5ft 8ins.; 11½st.

CYRIL BONSALL
(Outside Left).

Recruited last back-end. Native of East Kirkby, Notts, he is another of the coal-mining fraternity. Played with Kirkby Rovers before signing professional forms for New Hucknall Colliery, from which club the Town secured him. Is fast and tricky and shows much promise. 5ft. 5½ins.; 10st. 4lbs.



LANGLEY GARAGE

Castle Street, Luton.

Complete Service
— Depot —

Repairs and Overhauls,
Tyres and Tubes,
Accessories, Haulage,
CHAR-A-BANCS, Hire
Cars, Lock-up Garages,
New and Second-hand
Cars and Lorries.

The Most Up-to-date Garage in the County.

Open Night and Day.

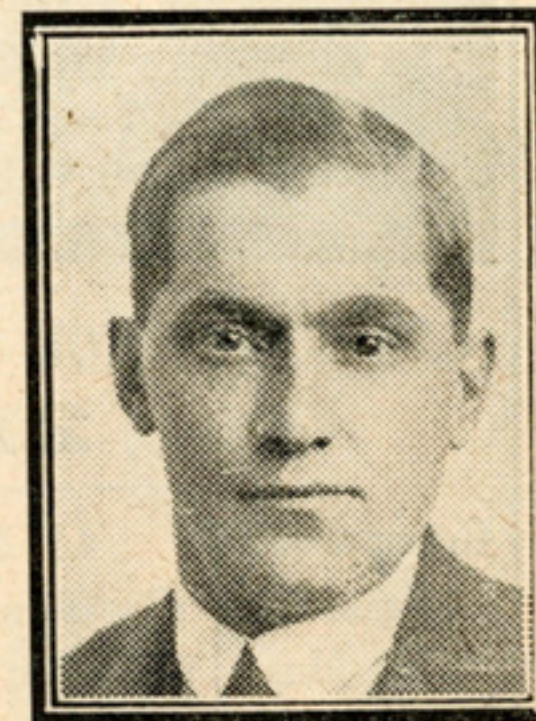
Proprietor: **B. E. BARRETT.**

TELEPHONE 846 (Private Branch Exchange.)



CHARLES DANSKIN
(Outside Left).

Recruit. Native of Lemington-on-Tyne, Northumberland. Played with Sunderland one season, Stockport County two, Aberdare two. Holds M.M. for service in the Navy. Has played well against Luton last two seasons. Is fast and clever. 5ft. 7ins.; 11st.



FRED WESTGARTY
(Trainer).

Recruit. Is a South Shields gentleman, and succeeds another gentleman in Billy Lawson. Hopes to equal latter's record of 30 years' service. Has learned his business at South Shields, and served Ebbw Vale and Workington. Has trained athletes in all branches of sport, and is an experienced masseur.

ARTHUR DAY



CAN SUPPLY YOU WITH A NEW PIANO
For **21/-** Per Month.

Gramophones
Records
Sheet Music

43 & 45,
George Street,
LUTON—Phone 481.

You are cordially
invited to inspect
our
SHOWROOMS

LUTON FRICKER'S ATHLETIC. MIDDLESEX LEAGUE FIXTURES.

Aug. 25—Tufnell Park ... H
Sep. 8—Cambridge T. (F) A
" 15—Colchester T. ... A
" 22—Luton Amat'rs.
(F.A. Cup) A
" 29—Chelmsford ... A
Oct. 6—F.A. Cup
" 13—F.A. Amateur Cup
Nov. 10—London Cale. ... H
" 17—Luton Amat'rs A
" 24—R.A.F. (Uxbr.)... A
Dec. 8.—Beds. Sen. Cup...

Dec. 22.—Luton Amat'rs H
Jan. 19—Beds. Sen. Cup...
" 26—Bush Hill Pk.... A
Feb. 2—London Cale. ... A
" 16—Beds. Sen. Cup ...
Mar. 1—Chelmsford H
" 22—Colchester T. ... H
" 29—Tufnell Park ... A
Apr. 5—Bush Hill Park H
" 12—R.A.F. (Uxbr.)... H
" 19-21—Easter Tour A
F. signifies friendly.

BERT DAY
(Groundsman).

Fourth season. Does not come into the limelight a lot, but his work is appreciated in all its branches. Has made a first-class playing pitch, and does his part to make the club a happy family.



For DINNERS : and TEAS :

VISIT

GARNER, WOOD & Co.,
—Ltd.,—

12, Manchester St., LUTON.

PROMPT AND EFFICIENT
SERVICE.

POPULAR PRICES.

PARTIES SPECIALLY CATERED FOR.

Tents, Tables, Plate, Glass,
Cutlery, etc., etc., on hire.

Luton Town Reserves Fixtures, 1923-24.

	Date.	Opponents.	Ground
1923.	Aug. 25	Coventry City	H
	" 29	Apsley (Fr.)	A
	Sept. 1	Coventry City	A
	" 8	Leicester City	H
	" 15	Leicester City	A
	" 22	Portsmouth	H
	" 29	Portsmouth	A
	Oct. 6	Southampton	H
	" 13	Southampton	A
	" 20	Northampton	H
	" 27	Northampton	A
	Nov. 3	Kettering (Fr.)	A
	" 5	Millwall	A
	" 10	St. Albans City (Fr.)	H
	" 17	Watford	H
	" 24	Watford	A
	Dec. 1	Bournemouth	A
	" 8	Bournemouth	H
	" 15	Reading	A
	" 22	Reading	H
	" 25	Brighton	A
	" 26	Brighton	H
	" 29	St. Albans City (Fr.)	A
1924.	Jan. 5	Charlton Athletic (Fr.)	H
	" 12		
	" 19	Q.P. Rangers (Fr.)	H
	" 26		A
	Feb. 2	Guildford	H
	" 9	Guildford	A
	" 16	Arsenal (Fr.)	H
	" 23		A
	Mar. 1	Kettering	H
	" 8	Kettering	A
	" 15	Q.P. Rangers (Fr.)	A
	" 22	Fletton United	H
	" 29	Fletton United	A
	Apr. 5	Luton Amateurs (Fr.)	H
	" 12	Norwich City	A
	" 18	Folkestone	A
	" 19	Norwich City	H
	" 21	Folkestone	H
	" 22	Millwall	H
	" 28	Arsenal (Fr.)	A
	May 1	Charlton Athletic (F.)	A
	" 3		H

Telegrams: DAYSON, LUTON.

Tel. 1063.

T. DAY & SON,

Beech Hill Garages,
LUTON,
Motor Engineers and Garage
Proprietors.

OVERHAULING & REPAIRS,
SPARE PARTS, TYRES, OILS,
&c.

SEVERAL CARS ALWAYS KEPT
READY FOR PRIVATE HIRE.
LARGE ACCOMODATION FOR
STORING CARS.

Sole District Agents for the

"CUBITT" & "HAMPTON" CARS.

Any make of Car or Motor Cycle supplied.

Luton Amateurs.

Fixtures, 1923-24.

Aug. 25.—Hampstead T. (F.) ... A
Sep. 1—London Cal. Strollers
(M.L.) H
.. 8.—Bush Hill Pk. (M.L.) H
.. 22.—Fricker's A. (F.A. C.) H
Oct. 6—Bush Hill Pk. (M.L.) A
.. 20.—Beds. Senior Cup ... A
.. 27—Vauxhall M. (C.L.) ... A
Nov. 10—Tufnell Park (M.L.) H
.. 17—Fricker's A. (M.L.)... H
.. 24—Waterlow's A. (C.L.) A
Dec. 8—Beds. Cup.
.. 15—Bush Hill Pk. (M.L.) H
.. 22—Fricker's A. (M.L.) ... A
.. 29—
Jan. 5—Chelmsford (M.L.) ... H
.. 12—Colchester (M.L.) H
.. 19—Beds. Cup
.. 26—London Cal. Strollers
(M.L.) H
Feb. 2.—R.A.F. (Uxb.) (M.L.) H
.. 16—Beds. Premier Cup.
Mar. 1—R.A.F. (Uxb.) (M.L.) A
.. 15—Vauxhall M. (C.L.) ... H
.. 22—Beds. Premier Cup.
.. 29—Chelmsford (M.L.) ... A
April 5—Luton Town Res. (F.) A
.. 12—
.. 18—Colchester T. (M.L.) A
.. 19—
.. 21—
.. 26—Tufnell Pk. (M.L.) A
May 3—Waterlow's A. (C.L.) H

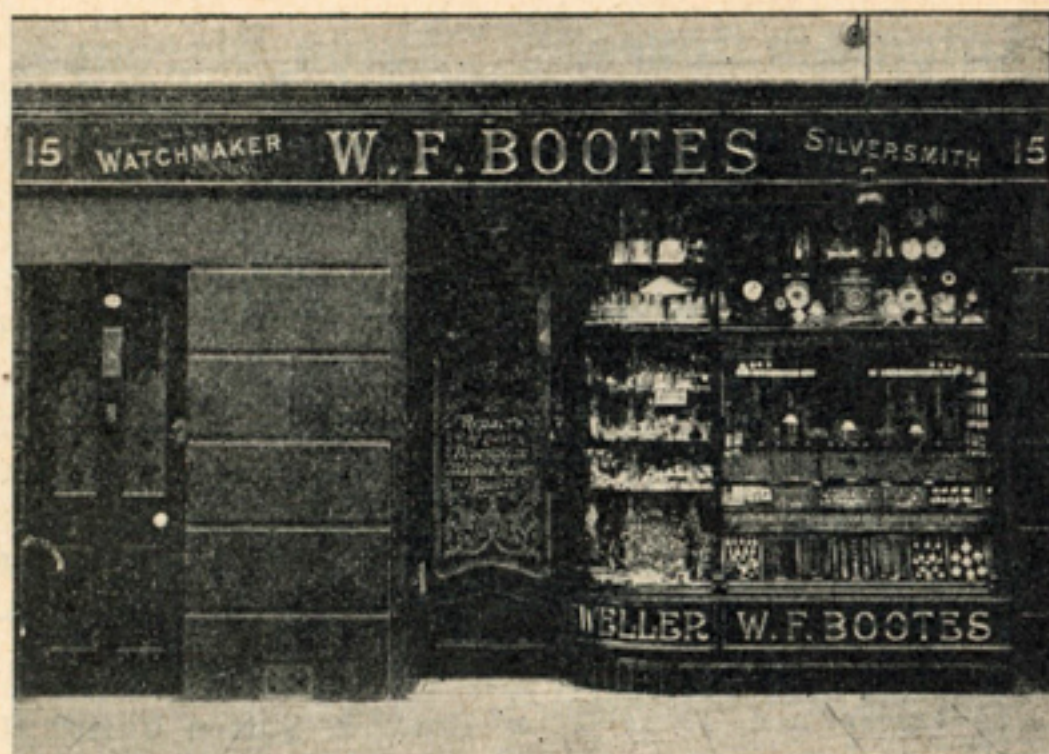
N.B.—F., Friendly; M.L., Middle-
sex Senior League; C.L., Beds.
County League.

Luton Clarence.

Fixtures, 1923-24.

ATHENIAN LEAGUE.

Aug. 25—Redhill H
Sept. 1—Sutton United A
.. 8.—Cheshunt H
.. 15.—Winds'r & Eton A
.. 22.—Hampstead
(F.A. Cup) H
.. 29.—Barking A
Oct. 6—Kingstonians... H
Nov. 3.—Sutton United H
Dec. 1.—Southall A
.. 22.—Southall H
.. 26—Hampstead T.... A
Jan. 5.—Barnet H
.. 19.—Enfield Town ... H
Feb. 2.—Barking H
.. 9.—Redhill A
.. 16.—Summerstown H
.. 23.—Enfield Town... A
Mar. 1.—Bromley H
.. 8.—Summerstown A
.. 15.—Bromley A
.. 29.—Cheshunt A
April 5.—Kingstonians... A
.. 19.—Winds'r & Eton H
.. 22.—Barnet A
.. 26.—Hampstead T. H



The Shop for



**Lucky Wedding and
Engagement Rings**

in 9-18-22 Carat Gold.
All sizes kept in stock.



**15, GUILDFORD ST.,
LUTON,**



HARRY PARSONS

At Your Service.

Whether you are in need of

FOOTBALL

OR

SPORTS ATTIRE

OR

EVERY-DAY WEARING APPAREL,

You are sure of

Personal Service and Best Value.

18, Manchester Street, LUTON.

Bedfordshire Football Association.

COUNTY CUP HOLDERS.

Premier—Biggleswade and Dis. Senior—Luton Amateurs.
Junior—Bedford Lynton Works. Minor—Stondon United.

Officials.

President: Mr. E. Lyonel Lynch, 13a, Hassett St., Bedford.

Vice-Presidents: Mr. C. H. Ridgway, 19, Vandyke Road, Leighton Buzzard; Mr. C. Green, 73, Hazlebury Crescent, Luton; Mr. E. Humphreys, 35, Commercial Road, Bedford.

Auditors: Mr. S. Moody, 6, Chiltern Rise, Luton; Mr. G. Wistow Walker, 40, Brook Street, Luton.

Executive Council:

Division 1.—Mr. Edgar Wood, Biggleswade.

Division 2.—Mr. F. C. Chapman, Potton.

Division 3.—Mr. T. Merrall, 17, Bridge Road, Bedford.

Division 4.—Mr. H. Eaton, 4, Cromwell Road, Bedford.

Division 5.—Mr. F. Stanton, 132, Spring Road, Kempston.

Division 6.—Mr. S. J. Darby, 106, Church St., Dunstable.

Division 7.—Mr. J. V. Vass, 45, Chapel Street, Luton.

Division 8.—Mr. F. W. Haddon, 74, Ridgway Road, Luton.

Division 9.—Mr. J. J. Hunt, 37, Reginald Street, Luton.

Division 10.—Mr. S. C. Kilby, 88, Spencer Road, Luton.

Hon. Secretary and Treasurer: Mr. Albert E. Ansell, 32, King Street, Luton.

The present personnel may be changed at the election in August.

AFFILIATED LEAGUES AND COMPETITIONS.

Bedford County Hospital Cup. T. Merrall, 17, Bridge Road, Bedford.

Bedford and District League (1919). T. Merrall, 17, Bridge Road, Bedford.

Bedford and District Thursday League (1906). W. J. Baker, 19, Commercial Road, Bedford.

Bedford and District Thursday Cup (1908). W. J. Baker, 19, Commercial Road Bedford.

Beds County League (1922). T. Merrall, Bridge Rd., Bedford.

Biggleswade and District League (1908). Edgar Wood, Biggleswade.

Leighton and District Cup (1913). T. Bunker, "Conisboro," Rosebury Avenue, Leighton Buzzard.

Leighton and District League (1908). H. F. Hopkins, 37, South Street, Leighton Buzzard.

Luton and District League (1898). J. V. Vass, 45, Chapel Street, Luton.

Luton and District Charity Cup (1922). J. V. Vass, 45, Chapel Street, Luton.

Luton and District Free Church League (1921). W. Broadbridge, 18, Tennyson Road, Luton.

North Beds. Charity Cup (1907). Edgar Wood, Biggleswade.

CENTRAL RESTAURANT

20, 22 & 24, CHEAPSIDE,
LUTON.

*The Largest Restaurant in Luton
with seating accommodation for 200.*

AFTER THE MATCH

♣ ♣ pay us a visit. ♣ ♣

Quick Service. Popular Prices.

**Large or Small Football Parties
especially catered for.**

PRICES ON APPLICATION.

Proprietor: S. G. PRIMETT

Established 50 Years.

LIST OF AFFILIATED CLUBS.

A Name and Address of Secretary. B Ground. C Colours.

Amphill Town. A F. J. Hollis, 43, Dunstable Street.

Arlesey Town. A E. W. Smith, Arlesey, Beds. B Bury Meadow. C Light and dark blue stripes.

Aspley Guise. A R. Urban, Mount Pleasant, Aspley Guise. B The Common. C Claret and amber.

Barton Rovers. A C. V. Ward, Beta Cottage, Barton, near Amphill. B Sharpenhoe Road. C Black and white stripes.

Beeston United. A O. Smith, Council Cottages, Beeston, near Sandy. B A. J. Jeeves' Meadow, Seddington.

Beds and Herts Regt. (Depot). A Q.M.S. J. A. Shrives, Kempston Barracks, Bedford. B Kempston Barracks.

Bedford Albions. A R. S. Ayres, 29, Coventry Road, Bedford.

Bedford Amalgamated Thursday. A A. Lightfoot, 32, High Street, Bedford.

Bedford Borough Police Athletic. A A. J. Jarman, Borough Police, Bedford. B Russell Park. C Blue.

Bedford Britannia Works. A W. Ashby, c/o Britannia Works, Bedford.

Bedford Celtic Athletic Club. A J. H. Coxan, 8, Trinity Road, Bedford. C Green and white.

Bedford Clarence. A J. Shotbolt, 3, Little Grove Place.

Bedford Lynton Works. A W. Barley, 90, Honey Hill Road, Bedford. B Spring Road, Kempston.

Bedford Midland Athletic. A S. Hughes, 5, Albert Street, Bedford. B Bedford Park. C Claret and amber.

Bedford Park Rangers. A H. Smith, 3, Little Thurlow Street, Bedford.

Bedford Queen's Park Rangers. A S. T. Shadrake, 5, Lawrence St., Bedford. B Queen's Park Recreation Ground.

Bedford Queen's Works. A C. C. Harris, Queen's Eng. Works. B Biddenham. C Blue (1st team); green (2nd team).

Bedford Southend Albions. A A. F. Hirst, 41, Muswell Road, Bedford.

Bedford St. Cuthbert's United. A R. J. Brawn, 11, Richmond Road, Bedford. B Russell Park.

Bedford Thursday. A R. D. Rose, 22, Harpur Street, Bedford. B Russell Park. C Red and white stripes.

Bedford Town. A E. W. Taylor, 108, Howbury Street, Bedford. B Ford End Road. C White shirts.

Biggleswade and District. A F. Leonard, Biggleswade.

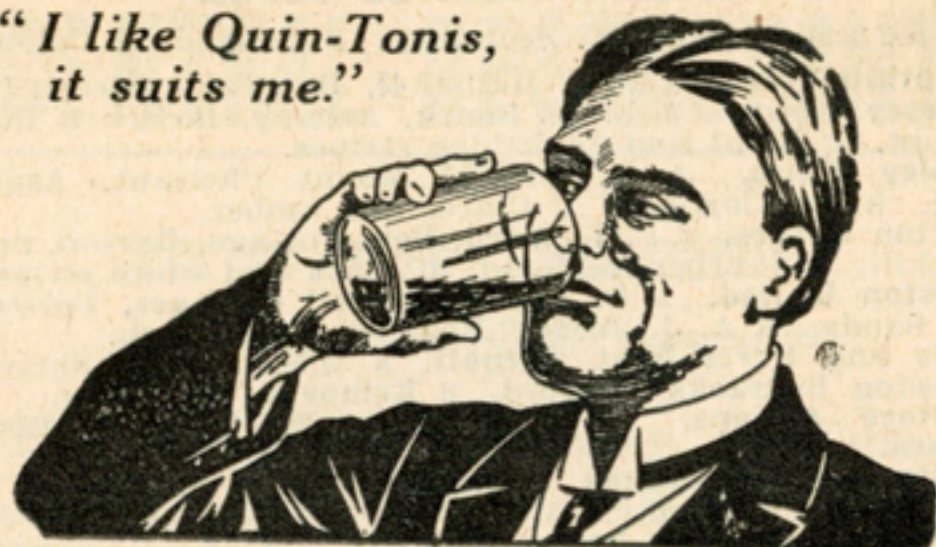
Bromham United. A J. Poole, Bromham, near Bedford.

Broom Athletic. A Mr. P. Rook, 85, Red Cottages, Broom, near Biggleswade. B Mr. G. Locket's Meadow.

Caldecote. A Mr. Edward J. Stokes, Lower Caldecote, near Biggleswade. B Mrs. Taddy's Meadow.

Cardington. A F. W. Lewis, 20, North Drive, Short Town, Bedford. B Cardington. C Black and white stripes.

*"I like Quin-Tonis,
it suits me."*



There are very few tonics that can
be so confidently recommended as

QUIN-TONIS

for the many complaints arising from
an overworked constitution, such as

ANÆMIA,	NERVOUS DEBILITY,
NEURALGIA,	LOSS OF APPETITE,
DYSPEPSIA,	POORNESS OF BLOOD,
WEARINESS,	SLEEPLESSNESS,
MENTAL DEPRESSION.	

Sold in 3/- Bottles by

WALTER S. CLARK,

PHARMACEUTICAL CHEMIST,

George Street, LUTON.

Chalton. A F. Lane, 4, Bird's Cottages, Chalton.
Clifton. A P. Meeks, Clifton, near Shefford. B Clifton.
Clophill United. A E. Fossey, High Street, Clophill. B
 Hunter's meadow. C Red and white stripes.
Cople. A E. S. Hughes, Clare Cottage, Cople, Beds.
Cranfield. A G. F. Salisbury, Old George House.
Dunstable Bagshawe's. A E. C. Dutton, 4, Albion Street,
 Dunstable.
Dunstable Congregational. A L. C. Stokes, 49, Edward
 Street, Dunstable. B Skimpot Farm. C White with black V.
Dunstable Rovers. A G. Hudson, 61, Waterlow Road.
Dunstable Thursday. A S. J. Watson, 30, Victoria Street.
Dunstable 419 Battery, R.F.A. A Sergt. Mason, Drill Hall.
Dunton. A A. E. Chessum, Dunton, Biggleswade. B
 Millow. C Scarlet and green.
Eaton Socon. A H. A. Gates, Motor Agent, Eaton Socon.
Eaton Bray. A Jim Bates, Bower Cottage, Eaton Bray,
 near Dunstable. B Eaton Bray. C Dark blue and amber.
Eaton Bray Juniors. A A. Brinklow, Post Office, Eaton
 Bray.
Edworth and Hinxworth United. A E. Harradine, Quarry
 Cottages, Ashwell End, Baldock. B Hinxworth. C Scarlet
 and green.
Elstow Abbey Athletic. A A. G. Hulatt, 9, Darwin Road,
 Elstow Road, Bedford. B Elstow. C White.
Eversholt Juniors. A J. Jeffs, 9, Witts End, Eversholt.
Felmersham United. A R. Turner, The Green, Radwell,
 Sharnbrook. B Radwell. C Claret and blue.
Flitwick. A T. Izzard, Horn End, Flitwick.
Girtford Rovers. A J. Chillery, London Road, Sandy.
Goldington. A A. J. Fleet, 35, Newnham Lane, Golding-
 ton Road, Bedford. B Goldington Green. C Blue with
 white facings.
Gravenhurst. A G. Brewer, Gravenhurst, near Ampthill.
Great Barford. A Rev. R. J. W. Pym, Great Barford
 Vicarage, Sandy. B Fisher's Close. C Red with white V.
Harlington Stars. A L. V. Brinklow, Church Road, Har-
 lington.
Harrold United. A L. Thew, The Green, Harrold Beds.
Haynes Park Rangers. A A. E. Buttain, Silver Lane,
 Haynes, Beds. B Mr. Matthew's Park. C Black and white.
Heath United. A L. J. Stevens and A. Lansbury, Heath
 Road, Heath and Reach, Leighton Buzzard. B Shenley
 Road, Heath. C Red and black stripes.
Henlow. A S. A. Cousins, High Street, Henlow. B Henlow
 Park. C Black and yellow stripes.
Houghton Regis. A F. Collier, 5, The Green, Houghton
 Regis, Dunstable. B Near the Green. C Red and blue.
Kempston Green End United. A F. F. Ross, Church End,
 Kempston. B Green End. C Green.



'BARBARIAN'

Regd.

The Football Boot with BIG POINTS.

Solid leather throughout. Best Army Kip Uppers.

Butt leather unbreakable toes.

First quality leather soles, bevelled edges.

Price - 15/9

Youth's (2-5) 14 9.

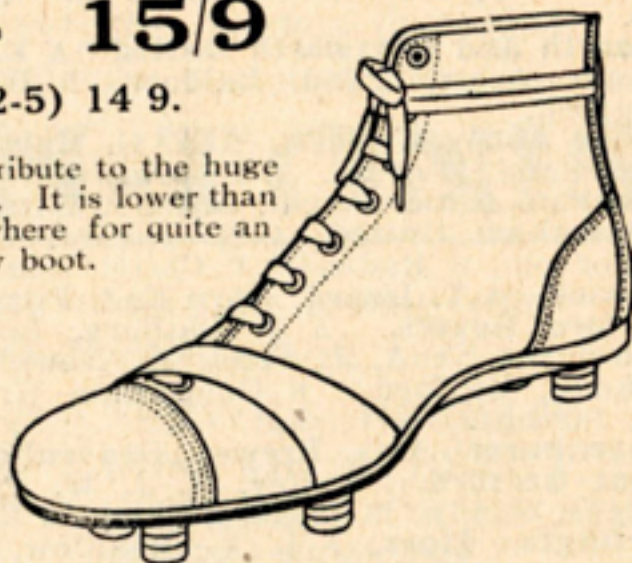
The low price is a tribute to the huge resources of F.H.W. It is lower than you would pay elsewhere for quite an ordinary boot.

OTHER RELIABLE BRANDS :

Men's, 8/11, 12/9

Youths' 7/11, 10/11

Boys' — 6/11



To all Clubs purchasing eleven pairs or more
we allow a Special Discount of 7½ per cent.

Freeman, Hardy & Willis, Ltd.

38, George Street, Luton.

Kempston Rovers. A A. Walker, 8, Woburn Road, Kempston, Beds. B Newell's Lane. C Red and white.

Langford. A W. Bates, Station Road, Langford. B Mr. Wells' meadow. C Red.

Leagrave and District. A N. V. Hyde, 1, Salisbury Road, Leagrave. B Marsh Road, Leagrave. C Red and black stripes; royal blue jerseys ("A" team).

Leighton British Legion. A G. W. Smith, Town Hall, Leighton Buzzard. B Lake Street. C Blue and white.

Leighton Buzzard Thursday. A Albert E. Butcher, 21, North Street, Leighton Buzzard. C Claret with amber V and cuffs.

Leighton United. A E. Brinklow, 3, Leighton Road, Linslade, Bucks. B Lake Street, Leighton Buzzard.

Lidlington United. A D. W. H. Budden, Hill Side, Lidlington, Beds. B Lidlington. C Black and white stripes.

Luton Amateurs. A R. K. Brown, 4, Kenilworth Road, Luton. B The Dell, Old Bedford Road. C White jerseys.

Luton Argyle. A T. Goddard, 47, Stuart Street, Luton. B West Ward Recreation Ground. C Emerald green.

Luton Bailey Hill Brotherhood. A W. Benson, 11, Windsor Street, Luton. B Russell Rise. C Red and white.

Luton Beech Hill Old Boys. A A. C. Allen, 50, Warwick Road, Luton. B Pope's Meadow. C Black and amber vertical stripes.

Luton Borough Police Athletic Club. A Sergt. Janes, Borough Police Office, Luton. C Blue.

Luton Bury Park Institute. A C. P. Cook, 28, Kenilworth Road, Luton. B Tram Terminus, Dunstable Road. C Claret and sky.

Luton Celtic Juniors. A G. Austin, 4, Hampton Road.

Luton Central Mission Brotherhood. A T. J. Neale, 13, Burr Street, Luton. B Pope's Meadow. C Navy and red; claret and light blue.

Luton Ceylon Athletic. A D. Clark, 75, Stuart Street, Luton. C Blue, white facings.

Luton Chase Street Mission. A W. Broadbridge, 18, Tennyson Road, Luton. B Stockwood Park. C Claret and blue.

Luton Christ Church Institute. A G. Walker, 106, Castle Street, Luton. B Dunstable Road. C White.

Luton Clarence. A Stanley C. Kilby, 88, Spencer Road, Luton. B Round Green, Luton. C Black and white stripes.

Luton Clydesdale. A W. Webb, 30, Jubilee Street, Luton.

Luton Corinthians. A F. Soper, 81, Boyle Street, Luton.

Luton Corinthians Juniors. A H. Pearce, 60, Cowper Street, Luton.

Luton Crescent Athletic Juniors. A E. F. Young, 74, Church Street, Luton. B Chaul End, Dunstable Road.

Luton Crusaders. A A. Odell, 69, North Street, Luton.

Luton Davis Athletic. A A. McArthur, 23, Clifton Road, Luton. B Dallow Road. C Green.

Luton Dunstable Road Wesleyans. A Percy C. Hawkins, 11, Mansfield Road, Luton. B Waller Avenue, Leagrave.

Luton Excelsior. A E. Godfrey, 49, Highbury Road.

Luton Fricker's Athletic. A R. S. Allen, c/o Fricker's Works, Portland Road, Luton. B Portland Road. C Claret and blue.

Luton Glendale. A F. Lucas, 4, Ferndale Road, Luton.

Luton Granville Juniors. A Miss R. Salter, 12, Kimpton Road, Luton. C Black and white vertical stripes.

Luton High Town P.M. United. A J. Hayward, 27, Dudley Street, Luton. B Round Green. C Red.

Luton Hitchin Road Old Boys. A W. F. Neal, 48, Cavendish Road, Luton.

Luton Hotspur Juniors. A H. Pearce, 60, Cowper Street.

Luton Ingram's Athletic. A W. B. Ingram, Chaul End Works, Luton.

Luton Ivydale United. A H. G. Preece, 207, North Street, Luton. B Pope's Meadow. C White.

Luton Kenilworth Rangers. A F. E. Pinney, 96, Highbury Road. B The Moor. C Green, black facings.

Luton Kent's Boys. A F. Dennison, 6, Ash Road, Luton.

Luton Kershaw's. A B. Bonsted, 313, Hitchin Road, Luton.

Luton Kershaw's "A." A P. Garrett, 82, New Town Street.

Luton King Street Congregational. A G. Johnson, 61, Newcombe Road, Luton. B Kingsway, Dunstable Road.

Luton Lawn Athletic. A C. A. Vass, 121, Castle Street.

Luton Montrose. A S. Kingham, 77, Wenlock Street.

Luton Mount Tabor. A A. Coleman, 88, Langley Road.

Luton North Street Wesleyans. A S. H. Clark, 107a, North Street, Luton. B Pope's Meadow. C Blue.

Luton Norton Rangers. A J. Speight, 61, Chase Street.

Luton Norton Rangers "A." A A. Olney, 27, Park Road West, Luton.

Luton Park Town. A F. S. Harris, 30, King's Road, and A. Hammett, 61, Park Street, Luton. B Leagrave Road, Luton. C Red with gold cuffs and necks.

Luton Round Green United. A J. Newton, 13, Stockingstone Road, Luton.

Luton St. Andrew's. A L. G. Upton, 69, Dane Road, Luton. B Kingsway, Dunstable Road. C Red and white stripes.

Luton St. Matthew's. A H. McGeorge, 159, Hitchin Road, Luton. B Public Pitch.

Luton St. Mary's. A A. Cooper, "Cassetta," Crawley Green Road, Luton. B Leagrave Road. C White.

Luton Silverdale. A G. Goodman, 103, Boyle Street, Luton. B Public Pitch. C Black and white stripes.

Luton Read & Horn. A S. Bowles, 15, Alma Street, Luton. B Bell's Close. C Claret and sky.

Luton Rosedale. A F. Cooper, 37, Havelock Road, Luton. B Pope's Meadow. C Claret.

Luton Town. A Chas. Green, 73, Hazelbury Crescent, Luton. B Kenilworth Road. C White.

Luton Union Athletic. A W. Burgess, 11, Tennyson Road, Luton. B Chaul End. C White.

Luton Vauxhall Motors. A G. H. Cotterill, Vauxhall Motors, Ltd., Kimpton Road, Luton. B Vauxhall Motors Recreation Ground. C Royal blue and gold.

Luton Wednesday Celtic. A A. J. Smith, 73, High Town Road, Luton. B Pope's Meadow. C Yellow and green stripes.

Luton Wednesday Hotspur. A B. Frost, 14, Shaftesbury Road, Luton. B Round Green. C Black and amber stripes.

Luton Wednesday Postal. A P. Hayward, 70, Naseby Road, Luton. B Pope's Meadow. C Red.

Luton Wednesday Villa. A P. F. Stevens, 16, Queen Square, Luton. B Public Pitch. C Claret and light blue.

Marston Rovers. A Frederick Hillson, Church End, Marston, Ampthill. B "The Bell Inn" Field. C Blue jerseys.

Maulden Stars. A V. R. Burton, Russell Farm, Maulden, Ampthill. B Silsoe Road. C Royal and white stripes.

Meppershall. A T. Ashton, Meppershall, Shefford. B Church Meadows. C Red and green stripes.

New Fenlake Athletic. A M. Crouch, New Fenlake, Bedford. B Davies Meadow, Cardington Road.

Odell Rovers. A J. E. Coleman, Post Office, Odell, Sharnbrook. B Village Farm Field. C Light blue.

Pepperstock. A E. Ellis, 187, Leagrave Road, Luton.

Potton Town. A A. C. Quinby, King Street, Potton, Beds.

R.A.F. (Henlow). A Sergt. G. Baldwin, Sergeants' Mess, R.A.F., Henlow, Beds. B Henlow Aerodrome. C Blue.

Ravensden. A —. Carter, Ravensden, Beds. B Cross Roads, Ravensden. C Red and yellow halves.

Renhold Social. A F. Northcott, "Three Horse Shoes," Renhold, Bedford. C Red.

Ridgmont. A W. J. Large, 75, Hill Side, Ridgmont, near Bletchley. B Segeno Park. C Navy and white.

Salford. A V. Denton, Hulcote, Woburn Sands, Beds.

Sandy Albions. A H. G. Finding, Verandah Villa, Bedford Road, Sandy. B Recreation Ground. C Black and white stripes.

Sandy Juniors. A C. Small, London Road, Sandy.

Sandy United Free Church. A S. E. Warren, Bedford Road, Sandy. B Spur Bridge. C Black and amber.

Sharnbrook. A H. Boyles, Post Office, Sharnbrook. B Mr. Newman's Field. C Scarlet and blue quarters.

Shefford Athletic. A Hugh Green, High Street, Shefford, Beds. B Shefford Hardwick. C Claret and blue.

Shillington. A S. A. Day, 4, Church Avenue, Shillington, near Hitchin, Herts. B Park Side. C Black and white stripes.

Silsoe Stars. A W. G. Aylott, Church Cottages, West End, Silsoe, Ampthill. B Wrest Park. C Claret and amber.

Slip End United. A F. H. Dyer, 18, Summer Street, Slip End. B Woodside Park. C White jerseys.

Stevington United. A Alfred James Mackness, The Institute, Stevington, Beds. B Silver Street. C Black and amber V.

Stondon United. A George Alfred Thompson, Upper Stondon, near Shefford, Beds. B Mr. Long's Meadow.

Stopsley. A G. Gain The Green, Stopsley, Luton. B Park Road. C White.

Stotfold Athletic. A Frank D. Gentle, "Green View," Stotfold, near Baldock, Herts. B High Street, Stotfold.

Stotfold Rovers. A A. Cardell, Springfield Villas, Stotfold, near Baldock. B Recreation Ground. C Blue with white V.

Streatley United. A R. D. Hull, Sundon. B Luton Road.

Sundon. A E. J. Wicks, Sundon.

Sutton Amateurs. A E. R. Stonebridge, 8, Council Cottages, Sutton, near Sandy. B Sutton Park. C Claret and sky.

Toddington Star. A F. W. Smith, Luton Road, Toddington. B Dropshort Farm. C White.

Totternhoe. A R. F. Turvey, Lockington Farm, Totternhoe. B Church End. C Red and black stripes.

Turvey United. A H. L. Whitlock, Carlton Road, Turvey, Bedford. B New Park. C Claret and sky stripes.

Walden Athletic. A C. Claridge, Working Men's Club, Breachwood Green, Welwyn.

Waterlows. A W. W. Goodyear, 22, Periwinkle Lane, Dunstable. B Dunsable. C Black and red stripes.

Westoning. A A. Bone, 4, Coventry Cottages, Westoning, Ampthill. B Bell Field. C Green.

Willington Athletic. A P. Davidson, 4, Bedford Road, Willington. B Vicarage Field. C Red with white facings.

Wilstead United. A T. S. Geary, Wilstead, Bedford.

Woburn Sands United. A G. F. H. Tyers, "Southwood," Aspley Heath, Woburn Sands. B Station Road.

Woburn Stars. A J. H. Dobbs, 66, Leighton Street, Woburn. B Woburn. C Black and amber stripes.

Woburn Town. A F. G. West, Woburn. B Mr. Negus' Field. C Black and white.

Wootton Blue Cross. A J. Hale, "Keeley Gow," Wootton, near Bedford. B Fisher's Field.

Wyboston. A A. U. Green, "The Croft," Wyboston, St. Neots. B Wyboston Lane. C Black and amber.

Wymington Stars. A F. Litchfield, New Estate, Wymington, near Rushden. B Podington Road. C Claret and blue.

HOW THEY FINISHED.

THE LEAGUE.—DIVISION I. Goals

	P	W	D	L	F	A	P
1—Liverpool	42	26	8	8	70	31	60
2—Sunderland	42	22	10	10	72	54	54
3—Huddersfield Town	42	21	11	10	60	32	52
4—Newcastle United ..	42	18	12	12	45	37	48
5—Everton	42	20	7	15	63	59	47
6—Aston Villa	42	18	10	14	64	51	46
7—West Bromwich Albion ...	42	17	11	14	58	49	45
8—Manchester City	42	17	11	14	50	49	45
9—Cardiff City	42	18	7	17	73	59	43
10—Sheffield United	42	16	10	16	68	64	42
11—Arsenal	42	16	10	16	61	62	42
12—Tottenham Hotspur	42	17	7	18	50	50	41
13—Bolton Wanderers	42	14	12	16	50	58	40
14—Blackburn Rovers	42	14	12	16	47	62	40
15—Burnley	42	16	6	20	58	59	38
16—Preston North End	42	13	11	18	60	64	37
17—Birmingham	42	13	11	18	41	57	37
18—Middlesbrough	42	13	10	19	57	63	36
19—Chelsea	42	9	18	15	45	53	36
20—Nottingham Forest	42	13	8	21	41	70	34
21—Stoke	42	10	10	22	47	67	30
22—Oldham Athletic	42	10	10	22	35	65	30

THE LEAGUE.—DIVISION II. Goals

	P	W	D	L	F	A	P
1—Notts County	42	23	7	12	46	34	53
2—West Ham United	42	20	11	11	63	38	51
3—Leicester City	42	21	9	12	65	44	51
4—Manchester United	42	17	14	11	51	36	48
5—Blackpool	42	18	11	13	60	43	47
6—Bury	42	18	11	13	55	46	47
7—Leeds United	42	18	11	13	43	36	47
8—The Wednesday	42	17	12	13	54	47	46
9—Barnsley	42	17	11	14	62	51	45
10—Fulham	42	16	12	14	43	32	44
11—Southampton	42	14	14	14	40	40	42
12—Hull City	42	14	14	14	43	45	42
13—South Shields	42	15	10	17	35	44	40
14—Derby County	42	14	11	17	46	50	39
15—Bradford City	42	12	13	17	41	45	37
16—Crystal Palace	42	13	11	18	54	62	37
17—Port Vale	42	14	9	19	39	51	37
18—Coventry City	42	15	7	20	46	63	37
19—Clapton Orient	42	12	12	18	40	50	36
20—Stockport County	42	14	8	20	43	58	36
21—Rotherham County	42	13	9	20	44	68	35
22—Wolverhampton	42	9	9	24	42	77	27

Travel to your away Matches by
MOTOR COACH

THE "DIXIE" SERVICE

Offers special facilities for FOOTBALL
TEAMS and other private parties at
: SPECIAL LOW RATES. :

**"DIXIE" MOTOR
COACHES**
HAVE PROVED THEIR VALUE

AN UNSOLICITED APPRECIATION FROM THE LUTON & DISTRICT FOOTBALL LEAGUE:

Dear Mr. Dixon,

Enclosed herewith cheque . . . for 2
Charabancs to Gamlingay. Please accept my
best thanks for the way in which the whole
affair was carried out. Hoping we shall again
have the pleasure of using the "Dixies" next
season.

Yours faithfully,

J. V. VASS, Hon. Sec.

FULL PARTICULARS ON REQUEST.

Head Office: 65, CHEAPSIDE, LUTON

or Booking Offices: 10, Bridge St. and 5, Cromwell Rd.

THE LEAGUE—DIVISION III. (Southern Section).

	P	W	D	L	Goals		P
					F	A	
1—Bristol City	42	24	11	7	66	40	59
2—Plymouth Argyle	42	23	7	12	61	29	53
3—Swansea Town	42	22	9	11	78	45	53
4—Brighton and Hove	42	20	11	11	52	34	51
5—LUTON TOWN	42	21	7	14	68	49	49
6—Millwall	42	14	18	10	45	40	46
7—Portsmouth	42	19	8	15	58	52	46
8—Northampton	42	17	11	14	54	44	45
9—Swindon Town	42	17	11	14	62	56	45
10—Watford	42	17	10	15	57	54	44
11—Queen's Park Rangers	42	16	10	16	54	49	42
12—Charlton Athletic	42	14	14	14	55	51	42
13—Bristol Rovers ..	42	13	16	13	35	36	42
14—Brentford	42	13	12	17	41	51	38
15—Southend United	42	12	13	17	49	54	37
16—Gillingham	42	15	7	20	51	59	37
17—Merthyr Town	42	11	14	17	39	48	36
18—Norwich City	42	13	10	19	50	71	36
19—Reading	42	10	14	18	36	55	34
20—Exeter City	42	13	7	22	47	84	33
21—Aberdare	42	9	11	22	42	69	29
22—Newport County	42	8	11	23	40	70	27

SOUTHERN LEAGUE (English Section).

	P	W	D	L	Goals		P
					F	A	
1—Bristol City Reserves	38	24	5	9	84	39	53
2—Boscombe	38	22	7	9	67	34	51
3—Portsmouth Reserves	38	23	3	12	93	51	49
4—Bristol Rovers Reserves ...	38	20	8	10	59	41	48
5—Plymouth Argyle Res.	38	20	7	11	74	41	47
6—Torquay United	38	18	8	12	63	38	44
7—Brighton and H. Res.	38	20	3	15	95	60	43
8—LUTON TOWN RESERVES	38	16	11	11	67	56	43
9—Southend United Reserves	33	18	6	14	69	68	42
10—Southampton Res.	38	18	5	15	65	54	41
11—Millwall Res.	38	15	10	13	61	55	40
12—Coventry City Res.	38	15	8	15	56	61	38
13—Guildford United	38	15	7	16	65	59	37
14—Swindon Town Reserves ...	38	13	6	19	54	73	32
15—Bath City	38	10	8	20	44	71	28
16—Watford Reserves	38	11	6	21	34	79	28
17—Yeovil and Petters Utd....	38	10	6	22	56	104	26
18—Norwich City Res.	38	9	7	22	42	68	25
19—Exeter City Res.	38	10	5	23	43	81	25
20—Reading Res.	38	7	6	25	43	95	20

Charnley and Sons

are Members by Examination
of the British Optical
Association.

Sight Testing
Spectacle Fitting
✻ Repairs. ✻

Oculists' Prescriptions made up

Hours: 9.30 to 1. 2.30 to 7.

15, Wellington Street,
LUTON.



BLUNDELL'S

High - class Tailoring at
Extremely Moderate Prices.

Lounge Suits in Pure Wool
Scottish Tweeds in smart new
designs, cut and made in our
own workrooms, £4 4 0.

Ready-to-wear Suits in first-
class finish, 42/-, 45/- and 50/-

OVERCOATS.

S.B. Style in Greys and Lovats
and Browns, 35/-, 42/-, 59/6
and 75/-.

D.B. Style in Blue Nap, guar-
anteed indigo dye, with belt
back, splendid quality, from
50/-. Other qualities in fleecy
Blanket Cloths, Tweeds, &c.
45/-, 63/-, 75/- and 84/-.

Ask to see the New Cloths.

Boys' and Youths' Overcoats in the new
season's styles, from 12/6.

Gabardine Raincoats in Fawn, lined check,
30/-, 42/- and 63/-.

BLUNDELL BROTHERS (LUTON)
LTD.

12, CHEAPSIDE - - LUTON, Beds.

*Takes Everything
in its Stride.*

SOME RECENT SUCCESSES

A.O.U. Stock Trial.....	Highest Possible
Redditch Trial.....	3 Highest Possibles
West Derby Trial.....	Best Solo Award
Cardiff Trial.....	4 Gold Medals
Liverpool Trial.....	5 Gold Medals
Land's End Trial.....	6 Gold Medals
Victory Cup.....	3 Gold Medals
Chapman Cup.....	Premier Award
Ulster Fifty.....	First Place

These results, all in the last few weeks, show the competitive merit of the Raleigh and what it does in official trials it will do for every rider in actual use. Its reliability is proverbial. Make your choice a

RALEIGH

THE MOTOR CYCLE.

MODELS.

The Raleigh 2½ h.p. Popular, 2-speed ..	£55
The Raleigh Semi Sports ..	£55
The Raleigh 2½ h.p. chain drive, 3-speed ..	£60
The Raleigh 2½ h.p. Sports ..	£66
The Raleigh 3 h.p. Combination ..	£83

Sole District Agents:—

H. G. PARTRIDGE & CO.,
10, 12, CHAPEL STREET, - LUTON.

Phone 234.