

The
Luton News



Football Handbook

1924-1925

Still Leading !!

FOSTER BROS.
CLOTHING CO., LTD.

EVERYTHING in Men's,
Youths' & Boys' WEAR.
Suits to order a speciality.

**22, Market Place,
LUTON.**

Over 100 other
Branches.

try Strangers first

for

EVERYTHING



SEE WINDOWS
for VALUES
IN ALL DEPTS.



Strange & Son

The General Drapers, Hosiers, Etc
Wellington St, LUTON

THE NEW VENTURE.

A bad start kept Luton Town on a back mark for a long period, but from the foot of the League table in October they rose to third position. That was the highest attained, and came just before Christmas. There was another bad spell in the New Year, but an improvement after the first month, and the concluding stage witnessed some little improvement, but the club dropped two positions in the League table, having three points fewer, and a much inferior goal average.

Injuries played a not important part, and once more the club had the misfortune to be drawn away from home in a Cup-tie, and lost to The Arsenal at Highbury.

No fewer than ten of the players have left the club, and nine new comers have been engaged. Failures in the past make us chary of prediction, and, considering the limited resources, the club has done well to secure men with such reputations. There should be keen competition for places in the first eleven, and the Southern League games should be well worth following. Immunity from accident and a good start should do much to stimulate enthusiasm, and it is to be hoped there will be no diminution in the loyalty of the supporters.

CLUB OFFICIALS.

Directors.

H. ARNOLD, Esq., J.P. (Chairman).
MESSRS. P. A. EDWARDS, E. GIBBS, E. MOUSE, H. SMART, STANLEY H. GODFREY, E. PRYOR and J. HEARN

AUDITORS.

KEENS, SHAY, KEENS & CO.

Secretary:

CHAS. GREEN, 73, Hazelbury Crescent, Luton.

Colours: White jerseys, black knickers.

Ground: Kenilworth Road (off Dunstable Road), Luton.

The "Dujon" Restaurants.

**GOOD QUALITY.
:: COMFORT. ::
GOOD SERVICE.**

*Special Quotations given to Football
Teams and Parties.*

**54, George Street, LUTON
34, High Street, BEDFORD
AND
Boul Café : : : OXFORD.**

LAST SEASON'S RECORD.

First XI.

THE LEAGUE: Division III. Position in Table: 7.

	Goals.					
	W.	L.	D.	F.	A.	Pts.
Home	11	3	7	34	18	29
Away	5	9	7	16	26	17
Total	16	12	14	50	44	46

PLAYERS' APPEARANCES.

There were 25 players called upon as compared with 27 last season. Hoten alone made every possible appearance.

Hoten, 42; Kerr, 39; Hoar, 38; Walker, 37; Anderson, 35; Till, 34; Jennings, 32; Gibbon, 30; Butcher, Millar, 29; Green, 25; Graham, 16; Reid, 14; Roe, 11; Danskin, Foster, 10; Orr, 9; Bonsall, 8; Tirrell, 6; Shepherd, 3; P. Clarke, Henderson, Molyneux, Prentice, Pearson, 1 each.

GOAL-SCORERS.

Kerr, 21; Hoar, 7 (4 penalties); Reid, 6 (1 penalty); Hoten, 5; Green, 5 (1 penalty); Butcher, 2; Bonsall, Foster, Millar, Walker, 1 each. Total, 50.

CUP-TIES.

	F.	A.
The Arsenal (A.)	1	4
Team.—Orr; Anderson, Till; Walker, Jennings, Millar; Hoar, Green, Kerr, Butcher, Hoten.		
Luton's goal was scored by Green.		

FRIENDLIES.

Four friendly games were played, with the following results:—

	H.	A.
The Arsenal	1	0
Mid-Rhondda	1	3
Watford	1	0
Watford	2	2

P.	W.	L.	D.	F.	A.
4	2	1	1	5	5

BRIGHTEST AND BEST
FOOTBALL REPORTS.

SPECIAL COMMENTS ON
ALL LUTON TOWN GAMES.

EXCLUSIVE CRITICISMS OF
ALL LEAGUE MATCHES.

SEE . . .

The Sunday News

(Formerly known as "Lloyd's Sunday News")

NOTED FOR THE EXCELLENCE
OF ITS SPORT SERVICE.

LAST SEASON'S RECORD

First XI.—*continued.*

The records of the five seasons since the war are as follow:—

	Pos.	W.	L.	D.	Goals.		Pts.
					F.	A.	
1919/20	20	10	22	10	51	76	30
1920/21	9	16	14	12	61	36	44
1921/22	4	22	12	8	64	35	52
1922/23	5	21	14	7	68	49	49
1923/24	7	16	12	14	50	44	46

Town Reserves.

SOUTHERN LEAGUE (Eastern Section).

Position in League Table: 13.				Goals.		Pts.
	W.	L.	D.	F.	A.	
Home	7	4	4	29	17	18
Away	3	9	3	13	34	9
Totals	10	13	7	42	51	27

FRIENDLIES.

		W.	L.	D.	Goals.	
					F.	A.
Home		4	1	0	16	8
Away		1	3	2	6	9
Total		5	4	2	22	17

Grand Totals:—

P.	W.	L.	D.	F.	A.
41	15	17	9	64	68

GET THE SATURDAY TELEGRAPH
FOR
Latest Football Results and Reports.

Wootton & Webb

(Mr. F. H. WEBB, M.P.S., F.N.A.O.)

THE OPTICIANS



Market Place,
— Luton. —

Phone 644.

MEN WHO HAVE PLAYED FOR LUTON since Professionalism was adopted.

1891-2: J. Burley; Sanders, Hoy; Wright, Paul, Taylor, E. H. Lomax; F. K. Whitby, Deacon, C. Lomax, Ocle, H. Whitby, Cheshier.

1892-3: Burley, T. Read; Sanders, Hoy, George, Wilson; Wright, Julian, Taylor, Watkins; Brown, Cheshier, Allen, H. and F. Whitby, Barbour, Galbraith, J. McKenzie, Kirk.

1893-4: Bee; Cheshier, Wilson, C. Reed; Watkins, Julian, Taylor; H. Whitby, Allen, Galbraith, Finlayson, Vickers, J. Dimmock, Brown, Hayes.

1894-5: Bee; Cheshier, McCartney, M. D. Nicholson, McEwen, Watkins, McCrindle, Howe, Collins; Brown, Gallacher, Galbraith, Prentice, Allen, Dimmock, Jack.

1895-6: Jack, Russell, Williams; Stirton, M. D. Nicholson, McCartney, McEwen, Watkins, Stewart, Docherty; Gallacher, Finlayson, Galbraith, Parkinson, Birch, Ekins, Coupar, Dimmock.

1896-7: Williams; Davies, McCartney, McEwen; Perrins, Stewart, Docherty, Watkins; Gallacher, Finlayson, McInnes, Galbraith, Birch, Coupar, Ekins, Dimmock, Brown.

1897-8: Williams; McCartney, McEwen; Davies, Stewart, Docherty, Perrins; Gallacher, Coupar, Birch, Clarke, Donaldson, Little, McInnes, Ekins, Durrant.

1898-9: Perkins; H. Williams, Moore, Dow; C. Ford, Clark, Sharp, Crump; Durrant, Hewitt, W. Ford, Kemplay, Draper, McInnes, Brock, Ekins.

1899-1900: Daw; Dow, McCurdy; Morrison, Stewart, Brown, Williams, Rally; Inglis, Brock, Fairgrieve, Draper, McInnes, Eckford.

1900-1: Monks; Ord, Lindsay, McCurdy; Clifford, Holdstock, Williams, Cox; Brown, Blessington, Molyneux, Burbage, Dempsey, Tierney, Saxton, Durrant.

1901-2: Ord; Lindsay, Sharp, Street; F. Hawkes, White, Williams, R. Hawkes; Durrant, Blessington, Brown, Barker, Tierney, Colvin.

1902-3: Frail; Lindsay, Sharp, Hood; F. Hawkes, White, Williams, R. Hawkes; Durrant, Blessington, Hilsdon, Moody, Davidson, Gall, Allsop.

1903-4: Thompson; Bennett, McEwen; F. Hawkes, White, R. Hawkes, Williams; Durrant, Eaton, McKee, Storey, Moody, Allsop, Griffiths, Madden.

1904-5: Lindsay; Turner, McEwen, J. Dow; F. Hawkes, White, R. Hawkes, Pritchard, Williams; Eaton, Ross, Lamberton, Penman, Moody, Wallace, Barnes.

ARTHUR DAY



CAN SUPPLY YOU WITH A NEW PIANO

For **21/-** Per Month.

Gramophones
Records
Sheet Music

43 & 45,
George Street,
LUTON—Phone 481

You are cordially
invited to inspect
our
SHOWROOMS.

1905-6: Platt, H. Farr; Blackett, McCurdy, J. Dow, Else, Watkins; F. Hawkes, White, R. Hawkes, Gallacher; Warner, Macdonald, Brown, E. Dobson, Pickering, Barnes, Latheron.

1906-7: Platt, H. Farr; Hogg, Jackson, McCurdy; F. Hawkes, White, R. Hawkes, Jones, Gallacher, Warner, Schofield, Macdonald, Brown, Murphy, E. Dobson, Gittins, Pickering, Barnes, Fitzpatrick, Latheron.

1907-8: Platt, Jarvis, H. Farr; Hogg, Nicholson, Dimmock, McCurdy; F. Hawkes, Jones, White, R. Hawkes; Rankin, Walders, Rigate, Hall, Brown, Pearson, Farrant, Moody, Latheron.

1908-9: Platt, Jarvis; Dimmock, McCurdy, Gregory, Chapman; F. Hawkes, Jones, R. M. Hawkes, White; Brown, Rigate, Haycock, Menzies, Bradley, Stansfield, Moody, Johnson.

1919-10: Jarvis, Fry; Hedley, McCurdy, Chapman, Rayner, Ruffett, Potts; F. Hawkes, Jones, R. M. Hawkes, Slennett, Trueman; Brown, Quinn, Smith, Moody, Stansfield, Johnson, Divine, Moore, Porter, Schofield.

1910-11: Naisby, Jarvis; Wightman, Chapman, Potts, Webb, J. Ashton, C. Watson; F. Hawkes, Bushell, R. M. Hawkes, Johnson, Brown, Quinn, Walker, Smith, Stephenson, Moody, Lashbrooke, Stansfield.

1911-12: Naisby; Wightman, Potts, Ashton, A. Brown; F. Hawkes, Bushell, R. M. Hawkes, Brown, Walker, Stephenson, Moody, Stansfield, Johnson, Shepherd, Walden, Lashbrooke, Streeton.

1912-13: J. W. Day, R. Abbott, H. Bateman; C. G. Henderson, E. J. Potts, J. Jarvie; F. Hawkes, S. Thompson, T. T. Wilson, R. M. Hawkes; J. Stephenson, A. H. Wileman, W. Smith, J. Murphy, B. Holland, T. Streeton, A. Worth.

1913-14: J. T. Mitchell, R. Abbott; J. R. Elvey, J. Robinson, J. Jarvie; F. Hawkes, R. W. Frith, R. M. Hawkes, T. T. Wilson, M. Donaghy, E. Stevens, A. F. Durrant, A. H. Wileman, E. Simms, R. Brewis, F. Rollinson, J. Wilkie, S. Hoar.

1914-15: J. T. Mitchell, R. Abbott; J. R. Elvey, J. Dunn, J. Robinson, E. J. Potts; F. Hawkes, R. W. Frith, R. M. Hawkes, T. T. Wilson, E. G. Needham, J. Brandham; H. P. Roberts, R. N. Macfarlane, A. H. Wileman, A. Roe, E. Simms, W. Heath, F. Rollinson, J. Chipperfield, F. Lindley, S. Hoar.

(War interval).

1919-20: P. Summers, R. Abbott, H. Whitehead, J. R. Elvey, J. Dunn, F. Hawkes, F. Hull; R. M. Hawkes, T. Urwin, J. Rutherford, T. Parker, J. Brandham, G. Bowler, P. Stewart; S. Hoar, W. J. Grimes, A. Roe, R. Tomlinson, D. Williams, E. Simms, L. Bookman, G. Dodd, F. J. Hensman, E. J. Seymour, H. Higginbotham, F. W. P. Hill

"HIPSLEY" TAILORING IS STILL SCORING

and winning support from smart men all over the British Isles. Winning because no other Tailor can keep up with the pace we've set in style, fit, quality and VALUE. The Hipsley team of Expert Tailoring Workers is in a class by itself—they take a pride in their work, and the standards of Tailoring we've set are

THE GOALS!

which they never fail to secure

All Wool
TWEED
S U I T
To Order

"Cruiser"
All Wool
SERGE
S U I T

45/-

50/-

HIPPS
LTD
54, Wellington St.
LUTON

1920-21: H. Bailey, J. M. Watson, R. Abbott; G. Lennon, A. Tirrell, J. Semple, F. Hull, A. Reynolds, F. J. Hensman; A. Roe, T. Parker, W. Molyneux, J. W. Lamb, H. L. Cockerill, L. R. Bayliss, W. Walsh, P. Stewart; S. Hoar, H. Higginbotham, G. Butcher, F. W. P. Hill, E. Simms, A. Mathieson, L. Bookman, H. Sidney, J. Shankland, J. McKechnie, J. Bradley.

1921-22: H. Bailey, T. Gibbon; A. Tirrell, G. Lennon, R. C. Graham, F. Hull, J. Stephenson; J. H. Foster, A. Roe, J. R. Walker, W. Molyneux, T. Parker, W. Walsh, R. Millar; E. J. Bassett, S. Hoar, H. Higginbotham, S. Reid, E. Simms, A. Mathieson, G. Butcher, L. Bookman, H. Sidney, J. Hall, H. S. Jephson.

1922-23: T. Gibbon, H. Bailey, S. Bird; G. Lennon, A. Tirrell, J. Stephenson, R. Graham; W. Jennings, A. Roe, J. Walker; W. Molyneux, J. H. Foster, R. Millar, A. Brown, T. Parker; S. Hoar, G. Butcher, S. Reid, W. Clarkson, H. Higginbotham, R. Thompson, R. Hoten, T. Irvine, R. Reader, T. Cottingham, W. Henderson, C. Bonsall, J. Grubb.

1923-24: T. Gibbon, J. Orr, W. Shepherd; R. Anderson, R. C. Graham, J. Pearson, A. Tirrell, J. Till; J. H. Foster, W. Jennings, R. Millar, W. Molyneux, A. Roe, J. R. Walker; S. Hoar, W. Henderson, G. Butcher, J. Green, A. Kerr, S. Reid, R. V. Hoten, C. Bonsall, C. Danskin.

ALL THE F.A. CUP WINNERS—Contd. from page 13.

- 1905-6.—Everton beat Newcastle United (1-0).
1906-7.—Sheffield Wednesday beat Everton (2-1).
1907-8.—Wolverhampton W. beat Newcastle U. (3-1).
1908-9.—Manchester United beat Bristol City (1-0).
1909-10.—Newcastle U. beat Barnsley (2-0) after draw (1-1).
1910-11.—Bradford City beat Newcastle U. (1-0) after draw (0-0).
1911-12.—Barnsley beat W. B. Albion (1-0) after draw (0-0).
1912-13.—Aston Villa beat Sunderland (1-0).
1913-14.—Burnley beat Liverpool (1-0).
1914-15.—Sheffield United beat Chelsea (3-0).
1915-16, 1916-17, 1917-18, 1918-19.—No competition.
1919-20.—Aston Villa beat Huddersfield (1-0) after extra time.
1920-21.—Tottenham beat Wolverhampton Wan. (1-0).
1921-22.—Huddersfield Town beat Preston North End (1-0).
1922-23.—Bolton Wanderers beat West Ham (2-0).
1923-4.—Newcastle United beat Aston Villa (2-0).

FURNISH YOUR HOME

AT

**F. Merchant & Sons,
8 & 10, Manchester St., Luton**

Watch our windows and
compare our quality and
✻ ✻ prices. ✻ ✻

Call and inspect our stock. Ten large
showrooms to select from. You will not
be asked to buy.

BLINDS AND CASEMENT CURTAINS.

REMOVAL CONTRACTORS.

Tel. 252.

Motto: "Keep Moving."

ALL THE F.A. CUP WINNERS.

- 1871-2.—Wanderers beat Royal Engineers (1-0).
1872-3.—Wanderers beat Oxford University (2-0).
1873-4.—Oxford University beat Royal Engineers (2-0).
1874-5.—R.E. beat Old Etonians (2-0), after a draw.
1875-6.—Wanderers beat Old Etonians (3-0) after a draw.
1876-7.—Wanderers beat Oxford University (2-0).
1877-8.—Wanderers beat Royal Engineers (3-1).
1878-9.—Old Etonians beat Clapham Rovers (1-0).
1879-80.—Clapham Rovers beat Oxford University (1-0).
1880-1.—Old Carthusians beat Old Etonians (3-0).
1881-2.—Old Etonians beat Blackburn Rovers (1-0).
1882-3.—Blackburn Olympic beat Old Etonians (2-1).
1883-4.—Blackburn Rovers beat Queen's Pk., Glasgow (2-1).
1884-5.—Blackburn Rovers beat Queen's Pk., Glasgow (2-0).
1885-6.—Blackburn Rovers beat W. B. Albion (2-0) after
draw).
1886-7.—Aston Villa beat West Bromwich Albion (2-0).
1887-8.—West Bromwich Albion beat Preston N. E. (2-1).
1888-9.—Preston N. E. beat Wolverhampton Wan. (3-0).
1889-90.—Blackburn Rovers beat Sheffield Wednesday (6-1).
1890-1.—Blackburn Rovers beat Notts County (3-1).
1891-2.—West Bromwich Albion beat Aston Villa (3-0).
1892-3.—Wolverhampton Wanderers beat Everton (1-0).
1893-4.—Notts County beat Bolton Wanderers (4-1).
1894-5.—Aston Villa beat West Bromwich Albion (1-0).
1895-6.—Sheffield Wednesday beat Wolves (2-1).
1896-7.—Aston Villa beat Everton (3-2).
1897-8.—Notts Forest beat Derby County (3-1).
1898-9.—Sheffield United beat Derby County (4-1).
1899-1900.—Bury beat Southampton (4-0).
1900-01.—Tottenham beat Sheffield U. after a draw (2-2)
(3-1).
1901-2.—Sheffield U. beat Southampton, after draw (1-1)
(2-1).
1902-3.—Bury beat Derby County (6-0).
1903-4.—Manchester City beat Bolton Wanderers (1-0).
1904-5.—Aston Villa beat Newcastle United (2-0).

(Continued on page 11).

No Match can be enjoyed

— WITHOUT PERFECT VISION. —



Your Comfort, Health and Efficiency, depend upon how
YOU treat the following questions :

Do You suffer from headaches?

Do You suffer with that dull heavy feeling over the eyes?

Do You wear Glasses? If so, are you quite sure they
are correct?

When was your sight last tested?

ADVICE AND EYES TESTED FREE.

If any of the above questions apply to YOU, call on

MR. H. WOOLF, *EYESIGHT
EXPERT*

WARD'S CHAMBERS,

New Bedford Road, LUTON,

who will assist YOU to answer them.

HOURS—10.30 to 7.0; Weds. 10.30 to 12. Open till 7.0 Sats.

REPAIRS NEATLY EXECUTED.

CUP FINAL ATTENDANCES.

The following figures give the attendances at the Football
Association Cup Finals for the last twenty-six years:

Year.	Ground.	Clubs.	Attendance.
1895	Crystal Palace	Aston V. v. W. Bromwich A. ...	42,560
1896	"	Sheffield W. v. Wolves	48,836
1897	"	Aston Villa v. Everton	65,891
1898	"	Notts Forest v. Derby County...	62,017
1899	"	Sheffield U. v. Derby County...	73,833
1900	"	Bury v. Southampton	68,945
1901	"	Tottenham H. v. Sheffield U. ...	110,820
1902	"	Sheffield U. v. Southampton ...	76,914
1903	"	Bury v. Derby County	63,102
1904	"	Manchester City v. Bolton W....	61,374
1905	"	Aston Villa v. Newcastle U. ...	101,117
1906	"	Everton v. Newcastle United ...	75,609
1907	"	Sheffield W. v. Everton	84,584
1908	"	Wolves v. Newcastle United ...	74,967
1909	"	Manchester U. v. Bristol C. ...	71,401
1910	"	Newcastle United v. Barnsley...	77,747
1911	"	Bradford City v. Newcastle U.	69,098
1912	"	Barnsley v. W. Brom. Albion...	54,556
1913	"	Aston Villa v. Sunderland	121,919
1914	"	Burnley v. Liverpool	74,093
1915	Manchester	Sheffield United v. Chelsea	49,557
1920	Chelsea	Aston Villa v. Huddersfield ...	50,018
1921	"	Tottenham H. v. Wolves	72,805
1922	"	Huddersfield v. Preston N.E. ...	53,710
1923	Wembley	Bolton W. v. West Ham U. ...	126,047
1924	"	Aston Villa v. Newcastle U. ...	91,695

LAST SEASON'S RECORDS.

	1st Div.	2nd Div.	S'thn Sectn.	N'thn Sectn.	Total
Goals scored	1143	1128	1177	1150	4598
Players utilised	554	561	523	574	2212
" Hat tricks "	25	32	30	23	110
Ever-presents	17	18	25	15	75
Ordered off	5	4	7	3	19

Unbeaten at home.—Wolves, Rochdale, Darlington.

Highest goal scorers.—Portsmouth, 87.

Best away record.—Portsmouth, 26 points.

Conceded fewest goals.—Rochdale, 26.

Record score and biggest victory.—Derby C. 8, Bristol C. 0.

Most home defeats.—Middlesbrough, 11.

Not won away.—Merthyr Town.

For DINNERS : and TEAS :

VISIT

GARNER, WOOD & Co.,
—Ltd.,—

12, Manchester St., LUTON.

PROMPT AND EFFICIENT
SERVICE.

POPULAR PRICES.

PARTIES SPECIALLY CATERED FOR.

**Tents, Tables, Plate, Glass,
Cutlery, etc., etc., on hire.**

THE F.A. CUP EXEMPTIONS, 1924-25.

EXEMPTED CLUBS.

[Clubs excused the Qualifying Rounds of the Competition.]

Following clubs were excused the qualifying rounds, viz:
Arsenal, Aston Villa, Barnsley, Birmingham, Blackburn Rovers, Blackpool, Bolton Wanderers, Bradford City, Brighton and Hove Albion, Bristol City, Burnley, Bury, Cardiff City, Chelsea, Clapton Orient, Corinthians, Crystal Palace, Derby County, Everton, Fulham, Huddersfield Town, Hull City, Leeds United, Leicester City, Liverpool, Luton Town, Manchester City, Manchester United, Middlesbrough, Millwall, Newcastle United, Northampton Town, Notts County, Nottingham Forest, Oldham Athletic, Plymouth Argyle, Portsmouth, Preston North End, Sheffield United, Sheffield Wednesday, Southampton, South Shields, Stockport County, Stoke, Sunderland, Swansea Town, Swindon Town, Tottenham Hotspur, Watford, West Bromwich Albion, West Ham United, Wolverhampton Wanderers.

[Clubs excused until the Fifth Round of the Qualifying Competition.]

Accrington Stanley, Bradford, Brentford, Bristol Rovers, Charlton Athletic, Clapton, Chesterfield, Coventry City, Darlington, Exeter City, Gillingham, Grimsby Town, Halifax Town, Merthyr Town, Nelson, Norwich City, Port Vale, Queen's Park Rangers, Rochdale, Rotherham County, Southport, Walsall, Wigan Borough, Wrexham.

[Clubs excused until the Fourth Round of the Qualifying Competition.]

Aberdare Athletic, Ashington, Barrow, Bishop Auckland, Bournemouth and Boscombe Athletic, Blyth Spartans, Crewe Alexandra, Doncaster Rovers, Dulwich Hamlet, Durham City, Erith and Belvedere, Hartlepool United, Kingstonians, Lincoln City, London Caledonians, New Brighton, Newport County, Reading, Sittingbourne, Stalybridge Celtic, Southend United, Stockton, St. Albans City, Tranmere Rovers.



The Shop for



**Lucky Wedding and
Engagement Rings**

in 9-18-22 Carat Gold.
All sizes kept in stock.

**15, GUILDFORD ST.,
LUTON,**



HERE WE ARE AGAIN!



Buy your
Piano

from

S. FARMER & Co.

and be assured of lasting satisfaction.

**2, Wellington Street,
Luton.**



**GILBERT HENRY
BROOKES**
(Goalkeeper).

Recruit. Born at Kidderminster. Played for Shrewsbury Town in Birmingham and District League when Stoke required him. Played in 17 games before K. Campbell. Scottish International, was secured. Went to Swansea Town last season, playing in 37 League, 4 English Cup, and 2 Welsh Cup games. Served 3½ years with the Army in France. A model goalkeeper. Height 6ft.; weight 11st. 8lb.

JOHN ORR
(Goalkeeper).

Second season. Came to Luton in December from Kilbinnie, a Scottish junior club, and went straight into the first team. Was not consistent, but was doing well at the end of the season. Is fearless, and may develop into first class. 5ft. 9in.; weight 10½st.



LANGLEY GARAGE

Castle Street, Luton.

Complete Service

Depot

Repairs and Overhauls,
Tyres and Tubes,
Accessories, Haulage,
CHAR-A-BANCS, Hire
Cars, Lock-up Garages,
New and Second-hand
Cars and Lorries.

The Most Up-to-date Garage in the County.

Open Night and Day.

Proprietor: **B. E. BARRETT.**

Telephone 846 (Private Branch Exchange).



ROBERT ANDERSON
(Full Back).

Second season. Born at Ardrossan, Ayr, and was playing for the Winton Rovers of that town when Luton made their best capture for years. Played back, half back, and once forward last season, but proved his title to the right back position. Small, and is fairly fast, but relies on his brains more than on his feet. Won his place and kept it by sheer merit. 5ft. 6in.; 10½st.

JOSEPH TILL
(Full Back).

Second season. Native of Stoke, but first big club was Dumbarton in 1919-20. In 1920-21 St. Mirren paid £975 for him, but one season at Paisley was enough. Retained, he did not re-engage until middle of 1922-23, and then was transferred to Luton. Sturdily built, faster than opponents like, a quick and clever tackler with rare judgment. 5t. 7½in.; 12st.



G. A. WILD & SONS,

*Saddlers and
Sports Outfitters,*

14, Manchester Street, LUTON.

FOOTBALLS.

"Wylde"	...	26/6
"Premier"	...	23/-
"Zig Zag"	...	21/-
"Paragon"	...	17/6
Improved "T"	22/6 & 25/-	

JERSEYS.

	Per dozen.
STRIPES from	25/6 to 47/6
SELF " "	25/6 " 45/-
ASTON	
VILLA " "	27/- " 60/-

BOOTS.

	Per Pair.
"Hotspur"	16/9 & 19/6
"Fleming"	12/6 & 15/6

KNICKERS.

White or Navy	
from ...	2/-, 2/6, & 3/6

HOSE.

From ...	1/6 to 3/6
----------	------------

SHIN GUARDS.

	Per Pair.
1/, 1/4, 1/11, &	2/6

BAGS.

12/6, 13/6, 16/6, 18/6,	
and 21/- each	

KNEE and ANKLE
BANDAGES 3/- each

And all Football Sundries a
Speciality.



ROBERT C. GRAHAM
(Full Back).

Fourth season. Born at Muirkirk, Ayr. Came from Kilwinning Rangers to Luton and has developed into a fine back. Fast, fearless, and clean, is sound with either foot, and a consistent player. Will be a candidate for a regular place in the first eleven this season. 5ft. 11in.; 12st.

JOS. JOHNSON
(Full Back).

Recruit. Native of Stamford, Lincolnshire. Had a season with Notts County, then signed for Watford in May, 1920. Given splendid service to the Herts. Club. Is strong, resolute back, with a hefty kick in either foot. 5ft. 8½in.; 11st. 10lbs.



Go there by Char-a-banc

Football Clubs should note that there is no cheaper way than travelling to their away matches than by Char - a - banc. The

LUTON BELLE

— AND —

ATALANTA (14 - Seater)

Chars-a-banc

Are the Best to Travel by.

Special low terms to all Clubs.

Ask for particulars of

A. E. WHITE,

Tobacconist,

41, Manchester St., LUTON.

Public 'Phone 31.



JAMES R. WALKER
(Half Back).

Fourth season. Born at Port Glasgow, was captain of Kilbarchan Athletic when Luton gave him a trial. Got his place first season, and except for short periods has been a regular first team player. Originally centre-half, played right half most of last season. Great in defence especially; fast, and as fair as any half back playing. 5ft. 9in.; 11½st.

JOS. MILLS
(Half Back).

Recruit. Native of Creswell, a village near Mansfield. Was discovered by Notts Forest when playing for Whitwell St. Lawrence four seasons ago. Can play in any position in the middle line, and has the reputation of never letting the side down. Came to Luton after getting transfer fee wiped out. 5ft. 8in.; 10st. 12lb.





BEFORE BUYING YOUR FOOTBALL KIT

Free to all.

Riley's
Winter
Sports
Catalogue.

Write to-day.

Write for a free copy of the splendid illustrated catalogue issued by Riley's of Accrington. It will assist you greatly in choosing your football requisites or the necessities for any other Winter outdoor sport. Every article is of sound workmanship and thoroughly dependable and the prices extremely reasonable.

Moreover, your satisfaction is assured, for if anything you purchase proves defective it will be replaced or your money refunded.

P.F.1.

E. J. RILEY, Ltd.,
Chingford Works, Accrington. 3

24/25



WM. JENNINGS
(Centre Half Back).

Third season. Born at Cinderhill, Notts. Notts County took him from Arnold St. Mary's, and from the "Magpies" he went to the "Canaries" at Norwich in 1919-20. After one season went to Merthyr Town for two seasons, and thence to Luton. Big and fearless, and hard as nails, is on robust side, and is as good on a losing side as on a winning side. Successful captain until injury at Christmas kept him out of the team. 6ft.; 12½st.

ARTHUR ROE
(Half Back).

Ninth season. Native of South Normanton, Derbyshire. First a centre-forward, then inside left, and in 1921 his capabilities as a half-back were ascertained; can play anywhere half or inside forward, but prefers left half. One of the cleverest ball manipulators that ever wore a Luton jersey, and a clean player in every way. Had a benefit last season, and deserved more than he got. 5ft. 9in.; 12st.



THE Daily Chronicle

is renowned for
its service of

FOOTBALL NEWS

which is in the hands of expert
writers and unrivalled critics.

Special Descriptions of big
League Games written by

"CORINTHIAN" "SARACEN"
"TROJAN," &c.

appear throughout the season
exclusively in the Sports pages of

"THE DAILY CHRONICLE."



ROBERT MILLAR.
(Half Back).

Fourth season. Born at Dalry, Ayr, has shown gradual improvement until he won a regular place at left half at the beginning of last season, and held it for the greater part. A hefty, tireless type, keeps going from start to finish. Is an awkward obstacle to the best of forwards, and can furnish a hot shot as occasion demands. 5ft. 10in.; 12st.

SIDNEY HOAR
(Outside Right).

Tenth season. Native of Leagrave. Played for Toddington before joining Luton Clarence, whence to Luton Town, as an outside left. Crossed over three seasons ago. Played in International trial match last season, and should have got a cap. Fast and tricky, with a good shot in either boot, he should get his England cap this season if ankle trouble does not interfere. 5ft. 8in.; 10½st.



Luton Town F.C. 1st XI. Fixtures, 1924-25 (Div. III.—Southern.)

Date.	Opponents.	Ground.	Goals.	
			For	Against
1924.				
Aug. 30	Gillingham	H	1	1
Sep. 1	Millwall Athletic	H	2	0
" 6	Bournemouth	A	3	2
" 8	Exeter City	H	1	0
" 13	Brighton and Hove	H	0	0
" 15	Northampton Town	A	0	2
" 20	Plymouth Argyle	A	0	0
" 22	Northampton Town	H	1	1
" 27	*Bristol City	H	4	1
Oct. 4	Swindon Town	A	2	3
" 8	Reading	A	1	0
" 11	Aberdare Athletic	H	1	0
" 18	Norwich City	A	2	1
" 25	Charlton Athletic	A	1	1
Nov. 1	Queen's Park Rangers	H	2	0
" 8	Merthyr Town	A	1	1
" 15				
" 22	Swansea Town	A	0	1
Dec. 6	Bristol Rovers	A	1	1
" 13	Newport County	H	2	0
" 20	Southend United	A	1	1
" 25	Watford	A	0	0
" 26	Watford	H	0	0
" 27	Gillingham	A	0	0

Date.	Opponents.	Ground.	Goals.	
			For	Against
1925.				
Jan. 3	Bournemouth	H	6	2
" 10	F. A. Cup—First Round.			
" 17	Brighton and Hove	A	0	4
" 24	Plymouth	H	0	2
" 31	*Bristol City	A	0	3
Feb. 7	Swindon Town	H	3	2
" 14	Aberdare Athletic	A	1	0
" 21	Norwich City	H	2	1
" 28	Charlton Athletic	H	0	1
Mar. 7	Queen's Park Rangers	A	2	0
" 14	Merthyr Town	H	0	0
" 21	Reading	H	2	0
" 28	Swansea Town	H	1	2
Apl. 4	Exeter City	A	1	2
" 10	Brentford	A	1	2
" 11	Bristol Rovers	H	0	0
" 13	Brentford	H	2	1
" 18	Newport County	A	0	1
" 25	Southend United	H	4	4

*Indicates club relegated from Division II., and results are those in matches with Portsmouth last season.
 Figures given are last season's results, Luton's figure being given first.

TRY a
Bottle of
J. W.'s Pale Ale.

Brewed at
The Brewery, Luton
 from the finest **Malt and Hops.**

WEST END MOTORS

(London & Luton), Ltd.

General Manager : J. HALES

We can supply
any make of Car
or Motor - Cycle.

The Price is the
same—it's the Ser-
vice that's better.

Offices and Works :
223, Dunstable Road - Luton.

London Showrooms :
71, Great Portland Street - W.1.



JAS. A. MACKEY
(Outside Right).

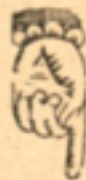
Recruit. Native of New-
castle-on-Tyne. After serv-
ing in the Marines he
went to Coventry City the
first season after the war.
Big price placed on him
after two seasons, and so
went to Carlisle United,
from which club he was
secured last season. Early
on he was transferred to
Lincoln City. Is fast and
centres well. 5ft. 8in.;
11st. 4lb.

WM. KEEN
(Inside Forward).

Recruit. Born at Ches-
ham, and played centre
for Chesham United before
going to Millwall Athletic
three seasons ago. Shows
equal facility anywhere
inside; controls well and
is a fine shot. Has nine
football medals, and won
the Military Medal in
France. Is a builder by
trade, and follows that
occupation. 5ft. 10½in.;
11st. 8lb.



The
Mineral Waters
that won
The Medals.



BURGESS,
LUTON.

PHONE 188.

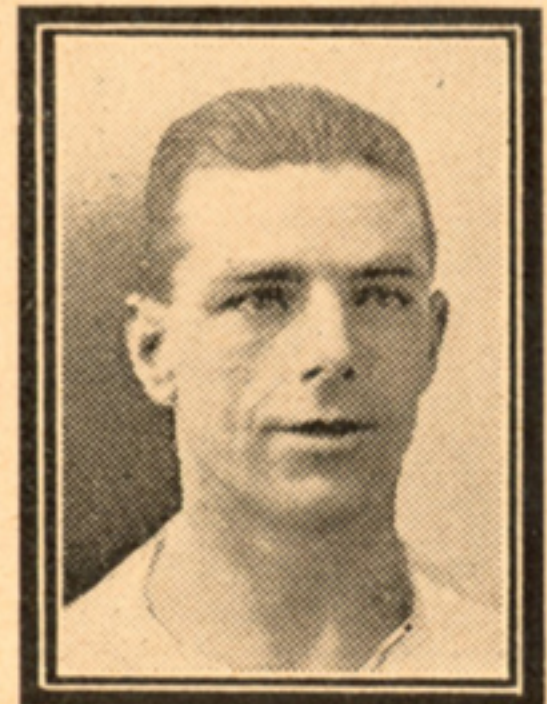


GEORGE BUTCHER
(Inside Forward).

Fifth season. Bermondsey born, but at St. Albans in infancy. Playing for St. Albans City when West Ham United "found" him and made him their inside left. With the "Hammers" ten seasons. Very fast and tricky player, and shows nothing of the veteran in his fitness. 5ft. 6in.; 10st.

ERNEST S. COCKLE
(Inside Forward).

Recruit. Born at East Ham, was brought from a Poplar team into Clapton Orient's ranks. After two seasons went to Maidstone in 1922-23, and scored 38 goals for the Kent club when they were at the apex of their career. Went to The Arsenal last year, and scored many goals for their Reserves. Huddersfield Town were beaten by Luton Town in the race to sign him. 5ft. 8½in.; 11st. 8lb.



Look at the Clubs who, year after year since 1904, have worn the Manfield-Hotspur continuously. The most famous of the world! The proportion of principal teams wearing the Manfield-Hotspur to any other is shown in striking figures. Of the 108 clubs in the English and Scottish Leagues, 80 play in "Manfield's."

Four widths. Half-sizes.

(Relative prices, Boys)

Manfield

Catalogues free, from
MANFIELD & SONS, Ltd.,
59 & 60,
ST. PAUL'S CHURCHYARD,
London, E.C.4

*Branches and Football
Boot Agencies all towns.*



19'6

(Post Free)

This mark on every Sole

**"MANFIELD-
HOTSPUR"**



JOHN SHANKLY
(Inside Forward).

Recruit. Born at Glenbuck, Ayr, and still in his teens. Signed for Portsmouth in October, 1922, and scored 50 goals for them in Southern League games in last two seasons. Comes to Luton with high recommendations, and should make a fine inside right. A miner before becoming a professional footballer. 5ft. 7in.; 11st.

ANDREW KERR
(Centre Forward).

Second season. Native of Falkirk, has figured in first-class Scottish football. Was playing for Ardrossan Winton Rovers when Luton obtained him. One of the fastest leaders in the game, was leading goal-scorer last season, and should have doubled his bag. Strong, quick on the ball, and a great shot. 5ft. 8in. 11st. 10lb.



New Hudson
CYCLES



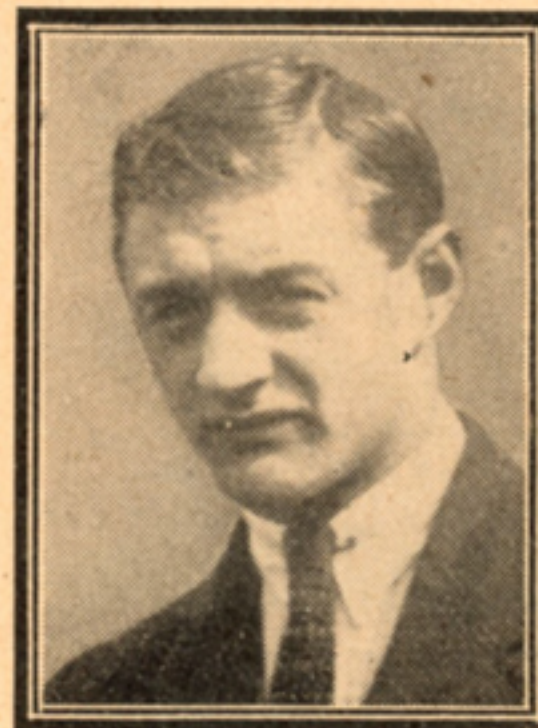
Delivered upon the
First Payment of 24/-
and 12 Payments of

PER **12'** MONTH
CASH PRICE
£7.12.6

CATALOGUE
POST FREE

H.G. PARTRIDGE & CO
10-12 CHAPEL STREET LUTON

*See Back of Cover
for Sports Requisites.*



SIDNEY REID
(Centre Forward).

Fourth season. Native of Troedyrhiw, Glamorgan. Playing with Troedyrhiw Stars when he came on trial to Luton, and proved worthy. Headed goal scorers in 1922-23, but superseded by Kerr last season. Won a place again near the end of the season, and got among the goals. Stockily built, with strong legs, is fearless and a splendid shot. 5ft. 6in.; 11st. 4lb.

RALPH V. HOTEN
(Inside Forward).

Third season. First opened his eyes at Pinxton, Derbyshire. Playing for Pinxton when Notts County engaged him. Thence to Portsmouth for two seasons, and was exchanged for Tom Parker in March, 1923. Played on the extreme left for greater part of last season, but prefers inside. Strong and resolute, a fast dribbler, and a good shot. 5ft. 9in.; 11st. 10lb.



Two of the Very Best!



SUNRIPE

MIXTURE & CIGARETTES

*"The Crowning Delight -
A pipe of **SUNRIPE**"*

1/- per oz
pkt

**2oz & 4oz
TINS**

SUNRIPE CIGARETTES

*Stand alone for **SIZE** and **TONE***

10 for 6d

**20 for 1/-
Also 50's**



THOS. H. BROWN
(Outside Left).

Recruit. Scot. born at Glasgow. Though only in mid-twenties, has played with several clubs, including Brighton and Hove Albion, Cardiff City, Bristol City, and was with South Shields last season. Is fast and tricky, and on his day unsurpassed for accuracy of centre. Holds many medals. 5ft. 9in.; 11st. 4lb.

GEORGE T. DENNIS
(Outside Right).

Recruit. Born at Moira, Leicestershire. Came into prominence with Coalville Swifts and then with Newhall Swifts. Notts Forest secured him from the latter club in 1920, when he was an inside left with 54 goals to his account. Thinks his best position is extreme left, and a regular first team man before they got an International wing. 5ft. 9½in.; 11½st.



ALEC WATSON'S LTD.

FAMOUS FOOTBALL OUTFITS

as supplied to many League Clubs.



**Jerseys, Knickers, Hose,
Sweaters, Goal Nets,
Boots, Shinguards,
Bags, Footballs,**

and every requisite
at Lowest Prices.

NOTE.—We hold the largest stocks of Jerseys in Great Britain.

A.W.'s "PERFECTION" FOOTBALL

as used by many famous League
Teams. Made in Best Cowhide,
also Tuphine Waterproof
Leather. Every one fully
guaranteed.

See Catalogue for Prices.



Write now for 1924/25 Winter Games Catalogue
with Coloured Jersey Sheet (it will repay you)
post free from (X18 Dept.)

39, Piccadilly, Manchester.



FRED WESTGARTH
(Trainer).

Second season. Native
of South Shields. Has been
in business as a football
club trainer for several
seasons, and served at
Ebbw Vale and Workington
before coming to
Luton. Made many friends
in Luton last season, and
hopes to train a cham-
pionship side this year.



BERT DAY
(Groundsman).

Fifth season. Takes
great pride in the ground
and its appointments
generally, and is as happy
as the rest of us when
matches are won. Should
be able to serve the club
long enough to get a
benefit.

Phone 223.

H. WHITE, Est. 1860.

SOLE DISTRICT AGENT FOR THE GENUINE

"Manfield-Hotspur" Football Boots

Stocked in 4 different
widths, and $\frac{1}{2}$ sizes.

Price **19/6**

**LOWEST PRICES
FOR GOOD BOOTS**



As supplied by US to the
Luton Town F.C.
Again this Season.
They Know the Best.

*Clubs supplied on Special Terms with
all the Best Brands and Sundries.*

26-30, Manchester St., Luton.

Luton Town Reserves' Fixtures, 1924-1925.

1924.

Aug. 30—Portsmouth* ...A
Sep. 6—Leicester C.*H
,, 13—Brighton*A
,, 17—Coventry C.*H
,, 20—Northampton* ...H
,, 27—Kettering*A
Oct. 1—Leicester C.§H
,, 4—Southampton* ...H
,, 11—Peterborough* ...A
,, 16—Northampton§ ...A
,, 18—Norwich C.*H
,, 20—Coventry C.§H
,, 25—Folkestone*H
Nov. 1—Reading*A
,, 8—Reading*H
,, 15—Nuneaton§A
,, 17—Millwall*A
,, 22—Guildford*H
,, 29—Nuneaton*H
Dec. 6—Higham T.§H
,, 13—Kettering§A
,, 20—Kettering§H
,, 25—Watford*H
,, 26—Watford*A
,, 27—Portsmouth*H
,, 29—Desborough§H

1925.

Jan. 3—Leicester C.*A
,, 10—Guildford*A
,, 17—Brighton*H
,, 24—Desborough§A
,, 29—Coventry C.§A
,, 31—Kettering*H
Feb. 7—Southampton* ...A
,, 14—Nuneaton§H
,, 21—Norwich C.*A
,, 28—Northampton* ...A
Mar. 7—Peterborough* ...H
,, 11—Northampton* ...H
,, 14—Folkestone*A
,, 18—Peterborough§ ...H
,, 21—Coventry C.*A
,, 28—Higham T.§A
Apr. 4—Rushden§H
,, 10—Bournemouth* ...H
,, 11—Rushden§A
,, 13—Bournemouth* ...A
,, 14—Millwall*H
,, 18—Arsenal†H
,, 23—Peterborough§ ...A
,, 25—Nuneaton*A
,, 30—Leicester C.§A
May 2—Arsenal†A

*Southern League.

§East Midland League.

†Friendly.

Do you feel a Cold coming on?

IF SO, TAKE A DOSE OF

Dr. BROWNE'S Influenza and Cold Cure.

In bottles at 1/3, from COCKER'S,
and DON'T delay.

Bring your Photo Films to us to
—— Develop and Print. ——

All kinds of Kodaks & Brownies in stock

H. E. COCKER, M.P.S.,

Pharmaceutical Chemist,

KENILWORTH PHARMACY,
DUNSTABLE ROAD, LUTON.

(Corner of Kenilworth Road).

LUTON AMATEURS F.C.

Bedfordshire and District League Fixtures.

Sep. 20—F.A. Cup.	
„ 27—Amateur Cup.	
Oct. 4—Arlesey	H
„ 11—Amateur Cup.	
„ 18—Bedford Town	A
„ 25—R.A.F. (Henlow)	H
Nov. 1—Hitchin Blue Cross	A
„ 15—Waterlow's Athletic	H
„ 22—Luton Clarence	H
„ 29—Fricker's Athletic	A
Dec. 20—Luton Clarence	A
Jan. 3—Waterlow's Athletic	A
„ 10—Hitchin Blue Cross	H
„ 17—Beds Senior Cup	
„ 24—Fricker's Athletic	H
„ 31—Vauxhall Motors	H
Feb. 7—Biggleswade	A
„ 14—Beds Premier Cup.	
„ 21—Arlesey	A
„ 28—Letchworth Town	H
Mar. 7—Senior Cup Semi-final.	
„ 14—Vauxhall Motors	A
„ 21—Premier Cup Semi-final.	
„ 28—Biggleswade	H
Apr. 4—Bedford Town	H
„ 18—Letchworth	A
„ 25—R.A.F. (Henlow)	H
May 9—Premier Cup Final.	

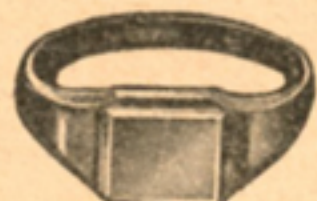
THE HOUSE FOR RINGS



£1 10 to £50

Diamond Rings.

Beautiful stones securely set in 18 ct. gold and platinum.



3/6 to £4

Signet Rings.

9 ct. and 18 ct. gold, in a vast range of the latest designs.



4/6 to £4 10

Wedding Rings.

9 ct. and 22 ct. gold, 15 sizes in 20 prices, always in stock.

F. HINDS, Ltd.

THE LONDON JEWELLERS,

5, Park Square, LUTON.

Branches at

HAMMERSMITH
CLAPHAM JUNCTION
DENMARK HILL

LEWISHAM
SOUTHAMPTON
LUTON, Etc.

ESTABLISHED 1856.

BEDS. COUNTY LEAGUE FIXTURES.

LUTON FRICKER'S ATH.

Aug. 30—Hitchin B.C.A
Sep. 6—BiggleswadeH
Oct. 18—R.A.F.H
Nov. 1—Waterlow'sA
.. 8—Vauxhall M.H
.. 22—Waterlow'sH
.. 29—Luton Am.H
Dec. 6—Beds Senior Cup.
.. 13—BiggleswadeA
.. 20—Letchworth T. ...H
Jan. 3—ArleseyA
.. 17—Hitchin B.C.H
.. 24—Luton Am.A
.. 31—Luton Clarence...A
Feb. 7—Letchworth T. ...A
.. 14—Beds Premier Cup.
.. 21—Vauxhall M.A
Mar. 14—R.A.F.A
.. 28—Luton Clarence...H
Apr. 4—ArleseyH
Matches (h. and a.) with Bedford Town to be arranged.
F.A. Cup, Sept. 20th and Oct. 4th.
Amateur Cup, Sept. 27th and Oct. 11th.

LUTON CLARENCE.

Sep. 17—Bedford T.H
Oct. 4—Vauxhall M.H
.. 11—BiggleswadeA
.. 18—Waterlow'sH
.. 25—Letchworth T. ...H
Nov. 1—R.A.F. (Hen.)A
.. 8—Arlesey T.H
.. 15—Hitchin B.C.A
.. 22—Luton Am.A
Dec. 20—Luton Am.H
.. 27—Waterlow'sA
Jan. 17—Senior Cup.
.. 24—Vauxhall M.A
.. 31—Fricker's Ath. ...H
Feb. 14—Premier Cup.
.. 21—Letchworth T. ...A
Mar. 7—Hitchin B.C.H
.. 14—Arlesey T.A
.. 21—Premier Cup, S-F.
.. 28—Fricker's Ath. ...A
Apr. 4—R.A.F. (Hen.).....H
.. 10—Bedford T.A
.. 14—BiggleswadeH

CENTRAL RESTAURANT

20, 22 & 24, CHEAPSIDE,
LUTON.

*The Largest Restaurant in Luton
with seating accommodation for 200.*

AFTER THE MATCH

pay us a visit.

Quick Service. Popular Prices.

**Large or Small Football Parties
especially catered for.**

PRICES ON APPLICATION.

HALL FOR HIRE—Licensed for Music & Dancing

Proprietor: S. G. PRIMETT

Established 50 Years.

Phone: Luton 172

Bedfordshire Football Association.

COUNTY CUP HOLDERS.

Premier—Waterlow's (Dunstable). Senior—Waterlow's
Junior—Luton Christ Church. Minor—Broom.

Officials.

President: Mr. E. Lyonel Lynch, 13a, Hassett St., Bedford.
Vice-Presidents: Mr. C. H. Ridgway, 19, Vandyke Road,
Leighton Buzzard; Mr. C. Green, 73, Hazlebury Crescent,
Luton; Mr. E. Humphreys, 35, Commercial Road, Bedford.
Auditors: Mr. S. Moody, 6, Chiltern Rise, Luton; Mr. G.
Wistow Walker, 40, Brook Street, Luton.

Executive Council:

Division 1.—Mr. T. Ferguson, Biggleswade.
Division 2.—Mr. F. C. Chapman, Potton.
Division 3.—Mr. T. Merrall, 17, Bridge Road, Bedford.
Division 4.—Mr. H. Eaton, 4, Cromwell Road, Bedford.
Division 5.—Mr. F. Stanton, 132, Spring Road, Kempston.
Division 6.—Mr. S. J. Darby, 106, Church St., Dunstable.
Division 7.—Mr. J. V. Vass, 45, Chapel Street, Luton.
Division 8.—Mr. F. W. Haddon, 74, Ridgway Road, Luton.
Division 9.—Mr. J. J. Hunt, 37, Reginald Street, Luton.
Division 10.—Mr. R. K. Brown, Luton.
Hon. Secretary and Treasurer: Mr. Albert E. Ansell,
32, King Street, Luton.

The present personnel may be changed at the election
in August.

AFFILIATED LEAGUES AND COMPETITIONS.

Bedford County Hospital Cup. T. Merrall, 17, Bridge
Road, Bedford.
Bedford and District League (1919). T. Merrall, 17, Bridge
Road, Bedford.
Beds and District League (1922). A. E. Ansell, 32, King
Street, Luton.
Bedford and District Thursday League (1906). W. J. Baker,
19, Commercial Road, Bedford.
Bedford and District Thursday Cup (1908). W. J. Baker,
19, Commercial Road Bedford.
Biggleswade and District League (1908). W. A. Birkett,
Biggleswade.
Leighton and District Cup (1913). T. Bunker, "Conisboro,"
Rosebury Avenue, Leighton Buzzard.
Leighton and District League (1908). A. F. Hubbins, 42,
Hockliffe Road, Leighton Buzzard.
Luton and District Charity Cup (1922). J. V. Vass, 45,
Chapel Street, Luton.
Luton and District League (1898). J. V. Vass, 45, Chapel
Street, Luton.
North Beds Charity Cup (1907). T. Ferguson, Biggleswade.

Charnley

and Sons

Qualified Members of the
British Optical Association.

Sight Testing
Spectacle Fitting
Repairs

Oculists' Prescriptions made up

Hours: 9.30 to 1. 2.30 to 7.

15, WELLINGTON STREET,
LUTON.

LIST OF AFFILIATED CLUBS.

- A Name and Address of Secretary. B Ground. C Colours.
- Ampthill B. Co. Territorials.** A H. Daniels, 71, Dunstable Street, Ampthill.
- Ampthill Town.** A O. F. Huckle, Park Hill, Ampthill.
- Aley Green Wesleyans.** A V. Banks, Aley Green, Luton.
- Arlesey Town.** A E. W. Smith, Arlesey, Beds. B Bury Meadow. C Light and dark blue stripes.
- Aspley Guise.** A R. Urban, Mount Pleasant, Aspley Guise. B The Common. C Claret and amber.
- Barton Rovers Juniors.** A C. Willson, Hexton Road, Barton, B Sharpenhoe Road. C Black and white stripes.
- Bedford Albions.** A R. B. Ayres, 29, Coventry Road, Bedford.
- Bedford Amalgamated Thursday.** A A. Lightfoot, 32, High Street, Bedford.
- Bedford Borough Police Athletic.** A A. J. Jarman, Borough Police, Bedford. B Russell Park. C Blue.
- Bedford Celtic Athletic Club.** A J. H. Coxan, 8, Trinity Road, Bedford. C Green and white.
- Bedford Clarence.** A B. Handscomb, Battison Street, Bedford.
- Bedford Lynton Works.** A C. Mead, c/o Lynton Works, Bedford. B Spring Road, Kempston.
- Bedford Midland Athletic.** A S. Hughes, 5, Albert Street, Bedford. B Bedford Park. C Claret and amber.
- Bedford North End Juniors.** A Percy Staploe, 5, River Street, Bedford.
- Bedford Queen's Park Rangers.** A S. T. Shadrake, 5, Lawrence St., Bedford. B Queen's Park Recreation Ground.
- Bedford Queen's Works.** A S. Pope, Short Street, Queen's Park, Bedford. B Biddenham. C Blue (1st team), green (2nd team).
- Bedford St. Cuthbert's United.** A R. J. Brawn, 11, Richmond Road, Bedford. B Russell Park.
- Bedford St. Peter's.** A Rev. A. F. Corney, 29, Tavistock Street, Bedford.
- Bedford Stars.** A L. H. Smith, 3, Little Thurleigh, Bedford.
- Bedford Southend Albions.** A A. F. Hirst, 41, Muswell Road, Bedford.
- Bedford Southend United.** A W. A. Fuller, 38, College Road, Bedford.
- Bedford Thursday.** A R. D. Rose, 22, Harpur Street, Bedford. B Russell Park. C Red and white stripes.
- Bedford Town.** A E. W. Taylor, 108, Howbury Street, Bedford. B Ford End Road. C White shirts.
- Beds and Herts Regt. (Depot).** A Q.M.S. J. A. Shrives, Kempston Barracks, Bedford. B Kempston Barracks.
- Beeston United.** A C. Smith, Council Cottages, Beeston, Beds.

Prices from :—

LOUNGE SUIT $3\frac{1}{2}$ gns.

OVERCOAT - $2\frac{1}{2}$ gns.

To measure.



W. BELL & SON



Tailors,
Chapel Street,
Luton.

Established 1889.

Phone 403.

Biggleswade. A H. Higginson, Station Road, Biggleswade.
Bromham. A R. Poole, Bromham, Beds.
Broom Athletic. A Mr. P. Rook, 85, Red Cottages, Broom, near Biggleswade. B Mr. G. Lockett's Meadow.
Caldecote. A Mr. Edward J. Stokes, Lower Caldecote, near Biggleswade. B Mrs. Taddy's Meadow.
Cardington. A R. Taylor, Shortstown, Bedford. B Cardington. C Black and white stripes.
Chalton. A B. Dixon, Chalton, Dunstable.
Cranfield. A C. F. Salisbury, Old George House, Cranfield.
Cranfield Athletic. A R. Evans, High Street, Cranfield.
Clifton. A P. Meeks, Clifton, near Shefford. B Clifton.
Cople. A E. T. Hughes, Clare Cottage, Willington.
Dunstable Argyle. A A. Pemberthy, 25, King Street, Dunstable.
Dunstable Bagshawe's. A A. C. Dutton, 4, Albion Street, Dunstable.
Dunstable Congregational. A J. Duncan, 16, Park Street, Dunstable. B Skimpot Farm. C White with black V.
Dunstable St. Peter's. A B. H. Bates, 9, Downs Road, Dunstable.
Dunstable Thursday. A S. J. Watson, 30, Victoria Street.
Dunstable 419 Battery, R.F.A. A Sergt. Mason, Drill Hall.
Dunton. A A. E. Chessum, Dunton, Biggleswade. B Millow. C Scarlet and green.
Eaton Bray. A Jim Bates, Bower Cottage, Eaton Bray, near Dunstable. B Eaton Bray. C Dark blue and amber.
Eaton Bray Juniors. A A. Brinklow, Post Office, Eaton Bray.
Eaton Socon. A R. Gates Motor Depot, Eaton Socon.
Edworth and Hinxworth United. A E. Harradine, Quarry Cottages, Ashwell End, Baldock. B Hinxworth. C Scarlet and green.
Elstow Abbey Athletic. A F. Harrison, 7, Darwin Road, Bedford. B Elstow. C White.
Eversholt Juniors. A J. Jeffs, 9, Witts End, Eversholt.
Felmersham United. A R. Turner, Radwell, Sharnbrook, Beds. B Radwell. C Claret and blue.
Flitwick. A P. R. Abbott, 6, Church Road, Flitwick.
Girtford Rovers. A F. Jeeves, London Road, Sandy.
Goldington. A A. J. Fleet, 35, Newnham Lane, Goldington Road, Bedford. B Goldington Green. C Blue with white facings.
Gravenhurst. A G. Brewer, Gravenhurst, near Ampthill.
Great Barford. A Rev. A. J. W. Pym, The Vicarage, Great Barford, Beds. B Fisher's Close. C Red with white V.
Green End United. A W. Barker, "Shoulder of Mutton," Green End, Kempston.
Harpenden Corinthians. A S. V. Shadbolt, Station Road, Harpenden.

Harrold United. A S. Swannell, Dove Lane, Harrold, Beds.
Haynes Park Rangers. A A. E. Buttain, Silver Lane, Haynes, Beds. B Mr. Matthew's Park. C Black and white.
Heath United. A L. J. Stevens and A. Lansbury, Heath Road, Heath and Reach, Leighton Buzzard. B Shenley Road, Heath. C Red and black stripes.
Henlow. A S. A. Cousins, High Street, Henlow. B Henlow Park. C Black and yellow stripes.
Houghton Regis. A F. Collier, 5, The Green, Houghton Regis, Dunstable. B Near the Green. C Red and blue.
Kempston Rovers. A A. Walker, 8, Woburn Road, Kempston, Beds. B Newell's Lane. C Red and white.
Kensworth. A D. W. Willis, Kensworth, near Dunstable.
Langford. A W. Bates, Station Road, Langford. B Mr. Wells' meadow. C Red.
Lavendon United. A S. C. Holmes, 3, Orchard Cottages, Lavendon.
Leagrave and District. A E. Maidment, Marsh Road, Leagrave. B Marsh Road, Leagrave. C Red and black stripes; royal blue "A" team.
Leighton Buzzard Thursday. A Albert E. Butcher, 21, North Street, Leighton Buzzard. C Claret with amber V and cuffs.
Leighton United. A E. Brinklow, 3, Leighton Road, Linslade, Bucks. B Lake Street, Leighton Buzzard.
Lidlington United. A D. W. H. Budden, Hill Side, Lidlington, Beds. B Lidlington. C Black and white stripes.
Luton Albion. A D. Arnold, 10, Chase Street, Luton.
Luton Amateurs. A R. K. Brown, 4, Kenilworth Road, Luton. B The Dell, Old Bedford Road. C White jerseys.
Luton Argyle. A T. Goddard, 43, Brunswick Street, Luton B West Ward Recreation Ground. C Emerald green.
Luton Bailey Hill Brotherhood. A R. Hickinbotham, 47, Arthur Street, Luton. B Russell Rise. C Red and white.
Luton Borough Police Athletic Club. A Sergt. Janes, Borough Police Office, Luton. C Blue.
Luton Central Mission Brotherhood. A T. J. Neale, 13, Burr Street, Luton. B Pope's Meadow. C Navy and red; claret and light blue.
Luton Ceylon Athletic. A J. Tompkins, 60, Princess Street, Luton. C Blue, white facings.
Luton Chiltern Juniors. A R. Thorn, 113, Tennyson Road, Luton.
Luton Christ Church Institute. A G. Walker, 106, Castle Street, Luton. B Dunstable Road. C White.
Luton Clarence. A Stanley C. Kilby, 88, Spencer Road, Luton. B Round Green, Luton. C Black and white stripes.
Luton Clifondale Juniors. A H. Cumberland, 13, Oxen Road, Luton.
Luton Corinthians Juniors. A B. Fowler.
Luton Crusaders. A J. T. Hillyard, 92, North Street.

Luton Davis Athletic. A A. McArthur, 23, Clifton Road, Luton. B Dallow Road. C Green.
Luton Dunstable Road Wesleyans. A Percy C. Hawkins, 11, Mansfield Road, Luton. B Waller Avenue, Leagrave.
Luton Excelsior. A R. Mabley, 41, Pondwicks Road, Luton.
Luton Ferndale. A A. Gearey, 69, Naseby Road, Luton.
Luton Fricker's Athletic. A R. S. Allen, c/o Fricker's Works, Portland Road, Luton. B Portland Road. C Claret and blue.
Luton Glendale. A L. Beasley, 13, Gloucester Road, Luton.
Luton Granville. A F. Lucas, 4, Ferndale Road. C Black and white stripes.
Luton High Town P.M. A A. E. Pilgrim, 74, North Street.
Luton Hitchin Road Old Boys. A W. F. Neal, 48, Cavendish Road, Luton.
Luton Hotspur Juniors. A L. C. Hoy, 22, St. Paul's Road.
Luton Hucklesby's. A E. C. Lee, 15, Russell Street, Luton.
Luton Ivydale United. A H. G. Preece, 231, North Street, Luton. B Pope's Meadow. C White.
Luton Lads' League. A Geo. Fuller, 47, Manor Path.
Luton Mount Tabor. A A. Coleman, 88, Langley Road.
Luton Norton Rangers. A F. Corke, 25, Langley Place.
Luton Park Town P.M. A F. Harris, 30, King's Road, Luton. B Leagrave Road. C Red with gold cuffs and neck.
Luton Ramblers. A E. H. V. Jorey, 33, Highfield Road.
Luton Rosedale. A R. Perry, 175, Park Street, Luton.
Luton Round Green United. A H. Young, 321, Hitchin Road, Luton.
Luton St. Andrew's. A L. G. Upton, 69, Dane Road, Luton. B Kingsway, Dunstable Road. C Red and white stripes.
Luton St. Mary's. A C. V. Ridd, 33, Cumberland Street, Luton. B Leagrave Road. C White.
Luton St. Paul's. A Geo. Whittington, 20, Baker Street.
Luton St. Peter's. A R. Munroe, 1, Grange Road, Luton.
Luton St. Matthew's Juniors. A T. H. Whinnett, 76, Wenlock Street, Luton.
Luton Silverdale. A G. Goodman, 103, Boyle Street, Luton. B Public Pitch. C Black and white stripes.
Luton Silver Star. A C. Stanbridge, 74, Chapel Street.
Luton Town. A Chas. Green, 73, Hazelbury Crescent, Luton. B Kenilworth Road. C White.
Luton Vauxhall Motors. A G. H. Cotterill, Vauxhall Motors, Ltd., Kimpton Road, Luton. B Vauxhall Motors Recreation Ground. C Royal blue and gold.
Luton Victoria Athletic. A Geo. Rolt, 139, Hitchin Road.
Luton Villa. A F. Cluter, 14, Court Road, Luton.
Luton Wednesday Celtic. A A. J. Smith, 73, High Town Road, Luton. B Pope's Meadow. C Yellow and green stripes.
Luton Wednesday Hotspur. A B. Frost, 14, Shaftesbury Road, Luton. B Round Green. C Black and amber stripes.

Luton Wednesday Postal. A P. Hayward, 70, Naseby Road, Luton. B Pope's Meadow. C Red.

Luton Wednesday Villa. A P. F. Stevens, 16, Queen Square, Luton. B Public Pitch. C Claret and light blue.

Luton West End Old Boys. A H. Pearce, 60, Cowper Street, Luton.

Luton West Hill United. A E. L. Rogers, 32, Maple Road.

Luton Whittlesey Athletic. A G. W. Ford Smith, 117, Tennyson Road, Luton.

Luton Young Liberals. A S. G. Deacon, 9, Highbury Road, Luton. B Old Bedford Road. C Blue and yellow.

Mangrove and District. A S. Hodgson, Cockernhoe, near Luton.

Markyate Baptist. A B. Warren, 17, Albert Street, Markyate, Dunstable.

Marston Rovers. A Frederick Hillson, Church End, Marston, Ampthill. B "The Bell Inn" Field. C Blue jerseys.

Maulden Stars. A C. Kirby, George Street, Maulden, Ampthill. B Silsoe Road. C Royal and white stripes.

Meppershall. A J. Ashton, Meppershall, Beds. B Church Meadows. C Red and green stripes.

Millbrook. A W. J. A. Bunker, Lye Meall, Millbrook, Beds.

Moggerhanger. A B. Emery, The Square, Chalton.

New Fenlake Athletic. A M. Crouch, New Fenlake, Bedford. B Davies Meadow, Cardington Road.

Odell Rovers. A J. Salisbury, High Street, Odell, Sharnbrook. B Village Farm Field. C Light blue.

Peter's Green United. A J. Smith, Camden House, Perry Green, near Luton.

Potton Town. A A. C. Quinby, King Street, Potton, Beds.

R.A.F. (Henlow). A Sergt. G. Baldwin, Sergeants' Mess, R.A.F., Henlow, Beds. B Henlow Aerodrome. C Blue.

Ravensden. A J. Carter, Ravensden, Beds. B Cross Roads, Ravensden. C Red and yellow halves.

Renhold Social. A F. W. Northcott, "Three Horse Shoes," Renhold, Bedford. C Red.

Ridgmont. A F. Miller, "Flying Horse" Farm, Lidlinton. B Segeno Park. C Navy and white.

St. Andrew's (Woodside). A B. Edwards, 13, Summer Street, Slip End, Luton.

Salford. A V. Denton, Hulcote, Woburn Sands, Beds.

Sandy Albions. A W. Norman, London Road, Sandy. B Recreation Ground. C Black and white stripes.

Sandy Juniors. A C. Small, London Road, Sandy.

Sandy United Free Church. A S. E. Warren, Bedford Road, Sandy. B Spur Bridge. C Black and amber.

Sharnbrook. A E. J. Bragg, Chapel Lane, Sharnbrook B Mr. Newman's Field. C Scarlet and blue quarters.

Shefford Athletic. A Hugh Green, High Street, Shefford, Beds. B Shefford Hardwick. C Claret and blue.

Shillington. A S. A. Day, 4, Church Avenue, Shillington, near Hitchin, Herts. B Park Side. C Black and white stripes.

Silsoe Stars. A W. G. Aylott, Church Cottages, West End, Silsoe, Ampthill. B Wrest Park. C Claret and amber.

Slip End United. A F. Rolt, 28, Church Street, Slip End. B Woodside Park. C White jerseys.

Stevington United. A Alfred James Mackness, The Institute, Stevington, Beds. B Silver Street. C Black and amber V.

Stondon United. A George Alfred Thompson, Upper Stondon, near Shefford, Beds. B Mr. Long's Meadow.

Stopsley. A Geo. Cain, Stopsley, Luton. B Park Road. C White.

Stotfold Athletic. A Frank D. Gentle, "Green View," Stotfold, near Baldock, Herts. B High Street, Stotfold.

Stotfold Rovers. A A. Cardell, Springfield Villas, Stotfold, near Baldock. B Recreation Ground. C Blue with white V.

Streatley. A B. Currington, Streatley, Dunstable.

Sundon. A E. T. Wicks, Sundon, near Dunstable.

Sutton Amateurs. A E. R. Stonebridge, 8, Council Cottages, Sutton, near Sandy. B Sutton Park. C Claret and sky.

Tilsworth. A J. Harnip, Tilsworth, Leighton Buzzard.

Toddington Stars. A J. S. Rogers, High Street, Toddington. B Dropshort Farm. C White.

Totternhoe. A F. Costin, Manor Farm, Totternhoe, Dunstable. B Church End. C Red and black stripes.

Turvey United. A H. L. Whitlock, Carlton Road, Turvey, Bedford. B New Park. C Claret and sky stripes.

Walden Athletic. A C. Claridge, Breachwood Green.

Waterlow's Athletic. A W. W. Goodyear, c/o Waterlow's, Dunstable. B Dunstable. C Black and red stripes.

Westoning. A A. Bone, 4, Coventry Cottages, Westoning, Ampthill. B Bell Field. C Green.

Willington Athletic. A J. Ellis, Willington Beds. B Vicarage Field. C Red with white facings.

Wilstead United. A T. S. Geary, Wilstead, Bedford.

Wootton Blue Cross. A J. Hale, Keeley Green, Wootton, near Bedford. B Fisher's Field.

Woburn Sands United. A G. F. H. Tyers, "Southwood," Aspley Heath, Woburn Sands. B Station Road.

Woburn Stars. A J. H. Dobbs, 66, Leighton Street, Woburn. B Woburn. C Black and amber stripes.

Woburn Town. A F. G. West, Woburn. B Mr. Negus' Field. C Black and white.

Wyboston. A B. Payne, "The Plough," Wyboston, Beds. B Wyboston Lane. C Black and amber.

Wymington Stars. A F. Litchfield, New Estate, Wymington, near Rushden. B Podington Road. C Claret and blue.

Football! Football!

PHONE YOUR RESULTS IMMEDIATELY

After the Match to

'The Saturday Telegraph.'

PHONE 1121 LUTON

(2 Lines).

REPORTS : : :

for "BEDS & HERTS PICTORIAL" and "LUTON NEWS" should reach the 'News' Office as soon as possible after the match, but not later than Tuesday morning. Report Sheets available on application from bona fide Secretaries.

YOU GET LATEST RESULTS : : :

in "The Saturday Telegraph." Long descriptive reports and photographs in "The Pictorial." Crisp comments, preparations for Saturday's games, and other interesting news in

'THE LUTON NEWS.'

HOW THEY FINISHED.

THE LEAGUE—DIVISION I.

	P	W	L	D	Goals.		P
					F	A	
1—Huddersfield Town	42	23	8	11	60	33	57
2—Cardiff City	42	22	7	13	61	34	57
3—Sunderland	42	22	11	9	71	54	53
4—Bolton Wanderers	42	18	10	14	68	34	50
5—Sheffield United	42	19	11	12	69	49	50
6—Aston Villa	42	18	11	13	52	37	49
7—Everton	42	18	11	13	62	53	49
8—Blackburn Rovers	42	17	14	11	54	50	45
9—Newcastle United	42	17	15	10	60	54	44
10—Notts County	42	14	14	14	44	49	42
11—Manchester City	42	15	15	12	54	71	42
12—Liverpool	42	15	16	11	49	48	41
13—West Ham United	42	13	14	15	40	43	41
14—Birmingham	42	13	16	13	41	49	39
15—Tottenham Hotspur	42	12	16	14	50	56	38
16—West Bromwich	42	12	16	14	51	62	38
17—Burnley	42	12	18	12	55	60	36
18—Preston North End	42	12	20	10	52	67	34
19—The Arsenal	42	12	21	9	40	63	33
20—Nottingham Forest	42	10	20	12	42	64	32
21—Chelsea	42	9	19	14	31	53	32
22—Middlesbrough	42	7	27	8	37	60	22

THE LEAGUE—DIVISION II.

	P	W	L	D	Goals.		P
					F	A	
1—Leeds United	42	21	9	12	61	35	54
2—Bury	42	21	12	9	63	35	51
3—Derby County	42	21	12	9	75	42	51
4—Blackpool	42	18	11	13	72	47	49
5—Southampton	42	17	11	14	52	31	48
6—Stoke	42	14	10	18	44	42	46
7—Oldham Athletic	42	14	11	17	45	52	45
8—The Wednesday	42	16	14	12	54	51	44
9—South Shields	42	17	15	10	49	50	44
10—Clapton Orient	42	14	13	15	40	36	43
11—Barnsley	42	16	15	11	57	61	43
12—Leicester City	42	17	17	8	64	54	42
13—Stockport County	42	13	13	16	44	52	42
14—Manchester United	42	13	15	14	52	44	40
15—Crystal Palace	42	13	16	13	53	65	39
16—Port Vale	42	13	17	12	50	66	38
17—Hull City	42	10	15	17	46	51	37
18—Bradford City	42	11	16	15	35	48	37
19—Coventry City	42	11	18	13	52	68	35
20—Fulham	42	10	18	14	45	56	34
21—Nelson	42	10	19	13	40	74	33
22—Bristol City	42	7	20	15	32	65	29

HOW THEY FINISHED—continued.

THE LEAGUE—DIVISION III.—SOUTHERN SECTION.

	P	W	L	D	Goals.		P
					F	A	
1—Portsmouth	42	24	7	11	87	30	59
2—Plymouth Argyle	42	23	10	9	70	34	55
3—Millwall	42	22	10	10	64	38	54
4—Swansea Town	42	22	12	8	60	48	52
5—Brighton and Hove	42	21	12	9	68	37	52
6—Swindon Town	42	17	12	13	58	44	47
7—LUTON TOWN	42	16	12	14	50	44	46
8—Northampton	42	17	14	11	64	47	45
9—Bristol Rovers	42	15	14	13	52	46	43
10—Newport County	42	17	16	9	56	64	43
11—Norwich City	42	16	18	8	60	59	40
12—Aberdare	42	12	16	14	45	58	38
13—Merthyr Town	42	11	15	16	45	65	38
14—Charlton Athletic	42	11	16	15	38	45	37
15—Gillingham	42	12	17	13	43	58	37
16—Exeter City	42	15	20	7	37	52	37
17—Brentford	42	14	20	8	54	71	36
18—Reading	42	13	20	9	51	57	35
19—Southend United	42	12	20	10	53	84	34
20—Watford	42	9	18	15	45	54	33
21—Bournemouth	42	11	20	11	40	65	33
22—Queen's Park Rangers	42	11	22	9	37	77	31

SOUTHERN LEAGUE—EASTERN SECTION.

	P	W	L	D	Goals.		P
					F	A	
1—Peterborough and Fletton	30	20	8	2	54	31	42
2—Leicester City	30	19	8	3	72	30	41
3—Southampton	30	18	7	5	60	36	41
4—Millwall	30	18	9	3	56	38	39
5—Portsmouth	30	16	12	2	66	37	34
6—Brighton and Hove	30	13	10	7	55	42	32
7—Norwich City	30	13	11	6	46	34	32
8—Folkestone	30	12	13	5	61	51	31
9—Coventry City	30	10	12	8	39	34	28
10—Watford	30	11	13	6	36	48	28
11—Reading	30	11	13	6	32	43	28
12—Northampton	30	9	11	10	32	47	28
13—LUTON TOWN	30	10	13	7	40	49	26
14—Guildford United	30	7	18	5	38	72	19
15—Kettering	30	5	17	8	30	67	18
16—Bournemouth	30	4	21	5	40	85	12

Champions of Western Section are Yeovil and Petters.



FOR YOUR NEW OVERCOAT GO TO BLUNDELL'S

We hold a large stock of the very latest styles ready-to-wear to suit every figure.

S.B. Overcoats in Tweeds and Blanket Cloths.

37/6 42/- 63/-

D.B. Overcoats in Blue Nap, belt back, lined Italian.

50/-

D.B. Overcoats in Pure Wool Blue Velour, semi-fitting back, latest style, as sketch.

84/-

Youths' S.B. and D.B. Overcoats in greys and browns, from

29/6

Special value in D.B. Blue Nap, half belt.

35/- on average size.

BLUNDELL BROS. (Luton Ltd.) 12, Cheapside, Luton

Your first fixtures should be with the **New Hudson Depot**

FOOTBALLS.



"League King"	-	23/6
"Improved"	-	22/6
"Supreme"	-	22/6
"Fanny Walden"	-	21/-
"Goalfinder"	-	21/-
"Premier"	-	21/-
"Referee"	-	17/6
"Regimental"	-	13/6
"Champion"	-	10/6
"Rival"	-	9/6
"Elite"	-	8/6



JERSEYS.

Prices per doz. —
Vertical Stripes,
Self Colours,
or Self Trimmed.

Men's - 28/- to 56/6

Man. United.

Men's - 35/6 to 52/6

Aston Villa.

Men's - 27/6 to 50/-



**GENEROUS
DISCOUNTS
TO CLUBS.**

This Ball supplied by us
to the Luton Town F.C.

KNICKERS.

With elastic tops
and hip pockets.

Per pair.

Men's White - 2/3

" " - 2/6

" " - 3/3

Men's Navy or

Black - 2/6

" " - 2/11

" " - 3/6

**FOOTBALL
BOOTS AT
LOWEST
PRICES.**

10, 12, Chapel Street, Luton