

1936 The Luton News 1937

# FOOTBALL HANDBOOK

2<sup>D</sup>

## ALWAYS WINNERS

### STYLE

represents the most  
up-to-date masculine  
wear, cut and comfort

### VALUE

stands for solid, reliable  
goodness backed by  
Foster Bros.' 60 year old  
reputation



# FOSTER

BROTHERS CLOTHING COMPANY LTD.  
140 BRANCHES

22 & 24, GEORGE ST., LUTON  
5, HIGH ST. SOUTH, DUNSTABLE



# LAST SEASON'S SUCGESSES

THESE COLOSSAL DIVIDENDS WERE  
PAID TO INDIVIDUAL CLIENTS  
DURING LAST SEASON 1935-1936

POOL-1 (7 RESULTS)	POOL-2 12 RESULTS FOR 6 <sup>d</sup>	POOL-3 (3 DRAWS)
30,000%	£13,029	10,226%
POOL-4 (4 AWAYS)	POOL-5 (5 RESULTS)	POOL-6 (8 RESULTS)
14,566%	2,106%	4,082%
WORLD'S LARGEST 1 <sup>st</sup> POOL (15 RESULTS)	RECORD DIVIDEND PAID TO ONE CLIENT £16,982 1 <sup>d</sup> FOR	

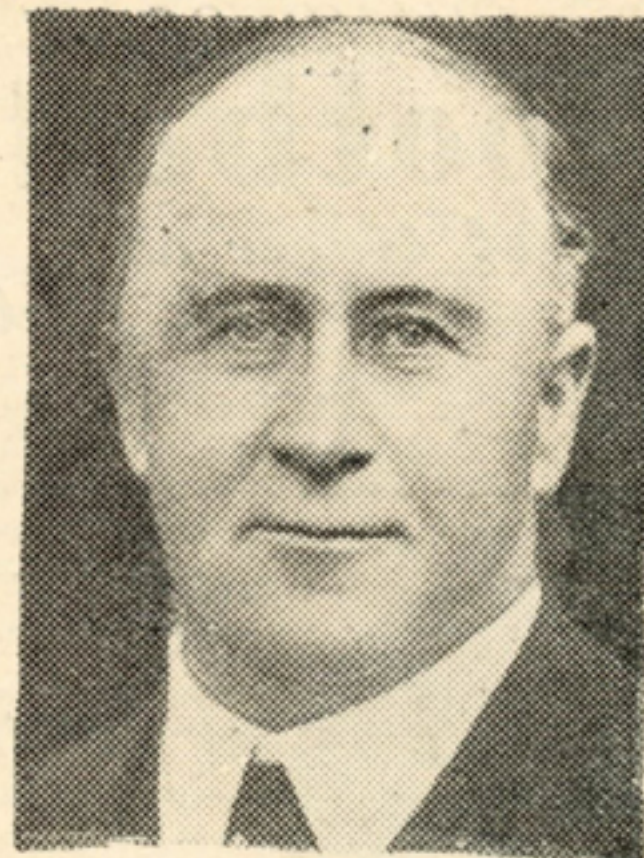
## LITTLEWOOD'S

THE WORLD'S LARGEST FOOTBALL POOL!

SEND FOR FULL PARTICULARS OF THESE AMAZING POOLS  
H. LITTLEWOOD LTD. HOOD ST. WHITECHAPEL LIVERPOOL 1

## LUTON TOWN FOOTBALL & ATHLETIC CLUB LIMITED

President: Mr. Harry Arnold, C.A., J.P.



The Chairman.

### Directors:

Chairman: Councillor Chas. Jeyes.  
Messrs. Edward Mouse (Vice-Chairman), F. J. Andrews,  
Stanley H. Godfrey, C.A., Horace S. Hewson, Percy G.  
Mitchell, C.C., E. Hugh Woods, Philip Wright.

Manager: Mr. E. Liddell.

Secretary: Mr. A. E. Wickson.

Hon. Medical Officer: E. J. Crarer, M.B., Ch.B.  
Colours: Shirts—White Shirts with Black collar, front-  
let and cuffs, and Black pocket with  
white straw hat badge.

Knickers—Black Knickers with white seams.

Hose—Black and White hooped stockings.

Ground: Kenilworth Road (off Dunstable Road), Luton.

Postal Address: 84, Kenilworth Road, Luton.



# GUNN & MOORE

HAND-SEWN

## Footballs

*last longer as  
Match Balls*



Hand sewn, made from specially selected hide, Gunn & Moore Footballs are famed for quality and value for money. Their accuracy of shape is long-lived. Lacing does not bulge. Used by many leading teams and in the Services.

"Left Wing," 12-panel, Cowhide, hand sewn.

"Right Wing," introduced 1885, and the most popular 8-panel ball to-day.

"Cannon T-Pattern," in Cowhide. Also in Tugite leather for lightness.

Other Association Footballs including all best known makes, from 9/-.

RUGBY BALLS. G. & M. Patent Rugby Ball, "Cannon T-Pattern," Gilbert's Rugby Balls, etc.

### TEAM SUPPLIES

*We are one of the foremost team suppliers. Best quality equipment at lowest prices.*

**Football Jerseys.** All standard Club stripes, halves, quarters and self colours. Keen prices.

**Knickers.** Navy and white. Various qualities. Rugby Knickers in twill, flannel or serge.

**Hose.** Plain and Club colours.

**Boots.** Soccer and Rugby. All leading makes: The "Cotton-Oxford," Manfield Hotspur, "Alex James," etc.

**Leg Guards, Goalkeepers' Sweaters and Gloves, Referees' Clothing, Goal Posts, Nets, Corner Flags, Entrance Tickets, etc.**

*Generous Discounts to Clubs. Write for Winter Catalogue No. FA. 31.*

**GUNN & MOORE LTD. Carrington Street, Nottingham**

## INTRODUCTION

"So near and yet so far" may well be the summing-up of last season. Every follower was bitterly disappointed that the Town team failed to win promotion by so narrow a margin, but what must have been the feelings of the directors who had worked so hard and risked so much in order to achieve the honour?

Still, the directors had the consolation of knowing that the supporters showed in practical form their appreciation, for there have never been such crowds, and records were broken in all departments.

With that experience the directors will enter upon the new campaign with greater confidence than ever. There is no change to report in the personnel of the directorate, but a very important change is the office of manager. Mr. Harold Wightman resigned in October last, and the directors carried on to the end of the season. Mr. Edward Liddell has been appointed recently, and is a man of wide experience in all phases of the game.

The record of the Directors should be guarantee sufficient for the supporters for 1936-37, and, win or fail in the big struggle, we hope to see, as we did last season, new records, and best of all, admission at the end of the season to the Second Division of the Football League.



# Before and after the Match visit the Sugar Loaf Hotel

King Street, Luton : Phone 1185

*Prices in the Lounge and all Bars  
of Luton's Celebrated Free House*

All celebrated brands of Whisky, including  
Johnny Walker, White Label, Black & White  
Hollands Gin, Booth's Gin, Brandy, etc.

(De Kuyper)

Large Glass of

PORT

WHITE  
PORT

SHERRY

# 6<sup>D.</sup>

WINE  
COCKTAILS

PHOSFERINE  
WINE

LARGE EGG  
WINE

Bottle of

Worthington's I.P.A.

Younger's Scotch Ale

Graham's Lager

Guinness's Extra Stout  
(Harp Label)

Lemonade and Claret

ON DRAUGHT

Mitchells & Butler's Best Bitter  $\frac{1}{2}$ pt. 3 $\frac{1}{2}$ d.

Worthington's I.P.A. - -  $\frac{1}{2}$ pt. 4d.

IN BOTTLE

Watney's or Ind Coope's Ale 4d.

# Comparison of League Records

## THE LEAGUE—DIVISION III (SOUTH)

1924-25  
Position in Table—17.

	P.	W.	L.	D.	F.	A.	P.
H	...21	9	2	10	34	15	28
A	...21	1	13	7	15	42	9
	42	10	15	17	49	57	37

1925-26  
Position in Table—7.

	P.	W.	L.	D.	F.	A.	P.
H	...21	16	1	4	60	25	36
A	...21	2	16	3	20	50	7
	42	18	17	7	80	75	43

1926-27  
Position in Table—8.

	P.	W.	L.	D.	F.	A.	P.
H	...21	12	0	9	48	19	33
A	...21	3	13	5	20	47	11
	42	15	13	14	68	66	44

1927-28  
Position in Table—13.

	P.	W.	L.	D.	F.	A.	P.
H	...21	13	3	5	56	27	31
A	...21	3	16	2	38	60	8
	42	16	19	7	94	87	39

1928-29  
Position in Table—7.

	P.	W.	L.	D.	F.	A.	P.
H	...21	16	2	3	64	28	35
A	...21	3	10	8	25	45	14
	42	19	12	11	89	73	49

1929-30  
Position in Table—13.

	P.	W.	L.	D.	F.	A.	P.
H	...21	13	4	4	42	25	30
A	...21	1	12	8	22	53	10
	42	14	16	12	64	78	40

1930-31  
Position in Table—7.

	P.	W.	L.	D.	F.	A.	P.
H	...21	15	3	3	61	17	33
A	...21	4	12	5	15	34	13
	42	19	15	8	76	51	46

1931-32  
Position in Table—6.

	P.	W.	L.	D.	F.	A.	P.
H	...21	16	4	1	62	25	33
A	...21	4	11	6	33	45	14
	42	20	15	7	95	70	47

1932-33  
Position in Table—14.

	P.	W.	L.	D.	F.	A.	P.
H	...21	12	1	8	60	32	32
A	...21	1	15	5	18	46	7
	42	13	16	13	78	78	39

1933-34  
Position in Table—6.

	P.	W.	L.	D.	F.	A.	P.
H	...21	14	4	3	55	28	31
A	...21	7	7	7	28	33	21
	42	21	11	10	83	61	52

1934-35  
Position in Table—4.

	P.	W.	L.	D.	F.	A.	P.
H	...21	12	2	7	60	23	31
A	...21	7	9	5	32	37	19
	42	19	11	12	92	60	50

1935-36  
Position in Table—2.

	P.	W.	L.	D.	F.	A.	P.
H	...21	13	2	6	56	20	32
A	...21	9	6	6	25	25	24
	42	22	8	12	81	45	56

(Continued from page 58).

Vauxhall Motors (Luton). a K. Edge, c/o General Secretary, Vauxhall Motors Recreation and Social Club, Luton. b Ashcroft Road. c Royal blue and gold shirts, black knickers.

Waterlow's (Dunstable). a W. W. Goodyear. "Joci," Lancot Hill, Dunstable. b Main London Road. c Red and black striped shirts, white knickers.



BET WITH THE MAN  
YOU ALL KNOW

E. J. SWAIN

23 REGINALD STREET

LUTON

TELEPHONE 2134-5.

*Commissions Accepted for the following :*  
RACING UNDER JOCKEY CLUB N.H.  
and P.T.C. RULES.

FOOTBALL COUPONS ON APPLI-  
CATIONS.

COMMISSIONS ACCEPTED FOR DOG  
RACING UNDER N.G.R.C. RULES.

TO BE SEEN PERSONALLY AT THE  
LUTON RACING STADIUM.

★ *Accounts opened on Approved References*

## Comparison of League Records

### LONDON COMBINATION

\*1924-25  
Position in Table—12.  
P. W. L. D. F. A. P.  
32 15 15 2 48 62 32

\*1925-26  
Position in Table—14.  
P. W. L. D. F. A. P.  
H ...17 11 5 1 52 27 23  
A ...17 0 15 2 18 51 2  
34 11 20 3 70 78 23

1926-27  
Position in Table—16.  
P. W. L. D. F. A. P.  
H ...21 12 2 7 70 28 31  
A ...21 3 17 1 20 67 7  
42 15 19 8 90 95 38

1927-28  
Position in Table—15.  
P. W. L. D. F. A. P.  
H ...21 13 6 2 57 29 28  
A ...21 3 15 2 30 66 8  
42 16 21 4 87 95 35

1928-29  
Position in Table—19.  
P. W. L. D. F. A. P.  
H ...21 13 5 3 48 25 29  
A ...21 3 18 1 21 72 5  
42 15 23 4 69 97 34

1929-30  
Position in Table—22  
(Last).  
P. W. L. D. F. A. P.  
H ...21 9 7 5 42 30 23  
A ...21 2 18 1 25 70 5  
42 11 25 6 67 100 28

1930-31  
Position in Table—11.  
P. W. L. D. F. A. P.  
H ...21 14 3 4 55 23 32  
A ...21 3 14 4 22 55 10  
42 17 17 8 77 78 42

1931-32  
Position in Table—12.  
P. W. L. D. F. A. P.  
H ...21 16 2 3 66 26 25  
A ...21 3 18 0 28 71 6  
42 19 20 3 94 97 41

1932-33  
Position in Table—19.  
P. W. L. D. F. A. P.  
H ...23 12 6 5 64 27 29  
A ...23 2 17 4 21 56 8  
46 14 23 9 85 83 37

1933-34  
Position in Table—19.  
P. W. L. D. F. A. P.  
H ...23 13 8 2 50 35 28  
A ...23 5 12 6 20 56 16  
46 18 20 8 70 91 44

1934-35  
Position in Table—15.  
P. W. L. D. F. A. P.  
H ...23 14 7 2 60 31 30  
A ...23 4 15 4 24 57 12  
46 18 22 6 84 88 42

1935-36  
Position in Table—8.  
P. W. L. D. F. A. P.  
H ...23 15 3 5 83 35 35  
A ...23 7 15 1 39 74 15  
46 22 18 6 122 109 50

\*Note Seasons 1924-25 and 1925-26 were  
Southern League.



# ARTHUR DAY'S PIANOS

ARE THE  
BEST

Arthur Day & Sons Ltd.  
Connaught House, Upper George St.  
Phone LUTON 481.

## PLAYERS' APPEARANCES

### THE FOOTBALL LEAGUE (Division III., Southern).

Stephenson ...	40	Boyd .....	13	Cook .....	4
Roberts .....	39	Beresford .....	12	Gooney .....	4
Nelson .....	38	Kingham .....	9	Hodge .....	4
Smith .....	38	Payne .....	9	Turner .....	4
Coen .....	36	Rich .....	9	Hubbard .....	3
Finlayson ...	32	Booton .....	7	M'Ginnigle ...	2
Fellowes .....	31	Kidd .....	7	Sloan .....	2
Martin .....	31	Dolman .....	6	Andrews .....	1
Mackey .....	26	Crook .....	5	Thayne .....	1
Crompton ...	21	Godfrey .....	5		
Ball .....	19	Colquhoun ...	4		

### LONDON COMBINATION

M'Ginnigle ...	39	Ball .....	8	Nelson .....	3
M'Intosh .....	36	Gooney .....	8	Rich .....	3
Andrews .....	35	Mackey .....	8	Smith .....	3
Hubbard .....	35	Fellowes .....	7	R Conquest ...	2
Cook .....	34	Finlayson ...	7	Hodge .....	2
Colquhoun ...	29	Crook .....	6	C Asbury .....	1
Kingham .....	29	Booton .....	5	D Jones .....	1
Turner .....	28	Coote .....	5	W J Randall...	1
Beresford .....	26	Crompton ...	5	J Rutherford	1
Payne .....	25	Dolman .....	5	A E Shotbolt	1
Kidd .....	24	Godfrey .....	5	R G Stanley...	1
Stevens .....	24	Martin .....	5	W G Wakeling	1
Thayne .....	16	W Dinsdale...	4	R Wells .....	1
Sloan .....	11	Taylor .....	4		
Boyd .....	9	Coen .....	3		

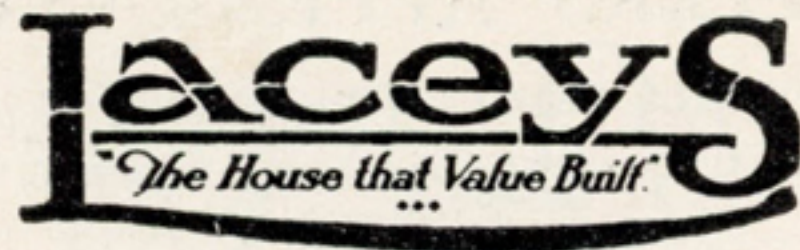
**F.A. CUP** (Same team for all three games).—Coen; Mackey, Smith; Finlayson, Nelson, Fellowes; Crompton, Martin, Ball, Roberts, Stephenson.

**SOUTHERN SECTION CUP**.—Coen; Mackey, Hubbard; Colquhoun, Nelson, Kidd; Crook, Roberts, Cook, Stephenson, Turner.

**BEDS PREMIER CUP**.—Coen; Finlayson, Smith; Payne, Nelson, Fellowes; Crompton, Martin, Ball, Roberts, Stephenson.

**FRIENDLY**.—M'Intosh; V Jarvis, W Wakeling; Colquhoun, Payne, Kidd; Beresford, Dinsdale, Cook, Andrews, Conquest.





Can ensure your comfort  
despite the weather.

## Raincoats for Men

Dannimac, Aquatite,  
Aquascutum,  
Raleigh & Wayfarer,  
**30/- 42/- 63/-**

## Boys' and Girls' Raincoats

FOR SCHOOL WEAR  
*Officially Recommended for the Local  
High Schools.*

**EM-AR & RALEIGH MAKES**

**EVERY COAT GUARANTEED**

**17/6 to 42/-**

(ACCORDING TO SIZE)

*Sole Local Distributors  
for Sandom Overcoats.*

**14**

**Wellington Street  
LUTON**

**14**

## TOWN CHAIRMAN'S MESSAGE

FIRSTLY I want to record my appreciation of the magnificent manner in which our supporters rallied round us last season, and not only during those days when excitement was so tense and things were going well, but also at the end when we were all in the throes of keen disappointment.

My colleagues on the Board of Directors not less than myself were greatly heartened by the many compliments and congratulations we received on the attempt we had made to win promotion.

We failed very narrowly after meeting with rather more than our share of misfortune, perhaps, but the success we did achieve and the splendid support to our efforts has given us greater determination than ever, and we hope that in the coming season we shall at last see all our hopes fulfilled.

I do not want to claim that the present Board of Directors has "placed Luton on the football map"; claims in any sphere of life are ridiculous at this stage; what we have tried to do is to carry on the good work of others, and we are all delighted that the supporters of the Club should have recognised our efforts.

May we rely upon you to rally round the Club again this season? We have splendid players, and with an average share of good fortune we hope to provide even better football than has yet been seen—football equal to that of any town in the kingdom.

CHAS. JEYES.





**YOUR  
GOAL  
for all  
SPORTS  
GOODS.**

**PARTRIDGES**

*Where satisfaction is assured.*

Football, Hockey, Badminton,  
Boxing, Billiards, Golf, and  
all indoor games.

**PARTRIDGE & CO.**

10-12, Chapel Street, Luton

PHONE 234

Footballs  
Jerseys  
Knickers  
Shinguards

Every requisite  
at lowest prices.

Send for our  
Winter Sports  
List to-day. It  
is Free.



Special Terms to Clubs.

Hose  
Boots  
Goal Nets  
Kit Bags  
**IMPROVED  
"T" BALL**  
as supplied by  
us to Luton  
Town F.C.

## GOAL SCORERS

**LEAGUE.**—Payne 13, Boyd 11, Stephenson 11, Ball 9  
(1 pen.), Roberts 9, Martin 7, Crompton 6, Cook 4,  
Rich 3, Fellowes 2 (1 pen.), Finlayson 2, Beresford,  
Crook, Turner, opponent own goal, 1 each. Total 81.

**LONDON COMBINATION.**—Cook 25 (1 pen.), Thayne 16,  
Turner 16 (1 pen.), Andrews 10, Beresford 10, Payne 8  
(4 pen.), Sloan 6, Ball 5, Boyd 5, Martin 5, Stevens 4,  
Rich 3, Crompton 2, Taylor 2, Fellowes, Finlayson,  
Hodge, Kidd, M'Ginnigle (pen.) 1 each. Total 122.

**FRIENDLY (2nd XI.)**—Cook 2.

**F.A. CUP-TIES.**—Ball 2, Roberts 2, Crompton, Roberts,  
Stephenson. Total 7.

**OTHER CUP-TIES.**—Stephenson 4, Ball, Crompton, 1  
each. Total 6.

## LONDON MID-WEEK LEAGUE

Oct. 14	—Southend	.....	A
Nov. 4	—Guildford	.....	H
" 11	—Islington Corinthians	.....	H
" 18	—Folkestone	.....	H
Dec. 10	—Fulham	.....	A
Jan. 27	—Guildford	.....	A
Feb. 10	—Southend	.....	H
" 18	—Islington Corinthians	.....	A
" 24	—Folkestone	.....	A
Mar. 3	—Fulham	.....	H
" 8	—West Ham	.....	A
Apr. 7	—West Ham	.....	H



*The finest selection of*  
**PRIZES, CUPS, SHIELDS,**  
**MEDALS and TROPHIES**  
*at competitive prices*

**JAMES WALKER**

GOLDSMITH & SILVERSMITH LTD.

*Jewellers to the Nation*

**SPORTS PRIZE SPECIALISTS**

**48 George Street, Luton**

PHONE: LUTON 1265

Secretaries of Sports and Athletic Clubs are  
 invited to write or call, when we shall  
 have much pleasure in explaining  
 our terms and unparalleled  
 in service.

**WEAR A WALKER WATCH!**

**MEN WHO HAVE PLAYED FOR LUTON**  
 since Professionalism was adopted.

1891-2: J. Burley; Sanders, Hoy; Wright, Paul, Taylor,  
 E. H. Lomax; F. K. Whitby, Deacon, C. Lomax, Ocle,  
 H. Whitby, Chesher.

1892-3: Burley, T. Read; Sanders, Hoy, George, Wil-  
 son; Wright, Julian, Taylor, Watkins; Brown, Chesher,  
 Allen, H. and F. Whitby, Barbour, Galbraith, J. McKenzie,  
 Kirk.

1893-4: Bee; Chesher, Wilson, C. Reed; Watkins,  
 Julian, Taylor; H. Whitby, Allen, Galbraith, Finlayson,  
 Vickers, J. Dimmock, Brown, Hayes.

1894-5: Bee; Chesher, McCartney, M. D. Nicholson,  
 McEwin, Watkins, McCrindle, Howe, Collins; Brown,  
 Gallacher, Galbraith, Prentice, Allen, Dimmock, Jack.

1895-6: Jack, Russell, Williams; Stirton, M. D. Nichol-  
 son, McCartney, McEwin, Watkins, Stewart, Docherty;  
 Gallacher, Finlayson, Galbraith, Parkinson, Birch, Ekins,  
 Coupar, Dimmock.

1896-7: Williams; Davies, McCartney, McEwin; Perrins,  
 Stewart, Docherty, Watkins; Gallacher, Finlayson,  
 McInnes, Galbraith, Birch, Coupar, Ekins, Dimmock,  
 Brown.

1897-8: Williams; McCartney, McEwin; Davies,  
 Stewart, Docherty, Perrins; Gallacher, Coupar, Birch,  
 Clarke, Donaldson, Little, McInnes, Ekins, Durrant.

1898-9: Perkins; H. Williams, Moore, Dow; C. Ford,  
 Clark, Sharp, Crump; Durrant, Hewitt, W. Ford,  
 Kemplay, Draper, McInnes, Brock, Ekins.

1899-1900: Daw; Dow, McCurdy; Morrison, Stewart,  
 Brown, Williams, Rally; Inglis, Brock, Fairgrieve,  
 Draper, McInnes, Eckford.

1900-1: Monks; Ord, Lindsay, McCurdy; Clifford,  
 Holdstock, Williams, Cox; Brown, Blessington, Molyneux,  
 Burbage, Dempsey, Tierney, Saxton, Durrant.

1901-2: Ord; Lindsay, Sharp, Street, F. Fawkes,  
 White, Williams, R. Hawkes; Durrant, Blessington,  
 Brown, Barker, Tierney, Colvin.

1902-3: Frail; Lindsay, Sharp, Hood; F. Hawkes,  
 White, Williams, R. Hawkes; Durrant, Blessington,  
 Hilsdon, Moody, Davidson, Gall, Allsopp.



# Bond's Garage

98/100, Castle Street, Luton

FOR

## EFFICIENT CAR REPAIR SERVICE

*Cars for Hire at Weddings, etc.*

**PETROL, OIL, ETC.**

Full range of Accessories

### OUR RADIO DEPT.

All leading makes of Sets and

Components, including

**G.E.C., COSSOR, ALBA, etc.**

Cash or Terms

'PHONE: 858

Vacuum Cleaners and Electric Appliances

1903-4: Thompson; Bennett, McEwin; F. Hawkes, White, Williams, R. Hawkes; Durrant, Eaton, McKee, Storey, Moody, Allsopp, Griffiths, Madden.

1904-5: Lindsay; Turner, McEwin, J. Dow; F. Hawkes, White, R. Hawkes, Pritchard, Williams; Eaton, Ross, Lamberton, Penman, Moody, Wallace, Barnes.

1905-6: Platt, H. Farr; Blackett, McCurdy, J. Dow, Else, Watkins; F. Hawkes, White, R. Hawkes, Gallacher; Warner, Macdonald, Brown, E. Dobson, Pickering Barnes, Latheron.

1906-7: Platt, H. Farr; Hogg, Jackson, McCurdy; F. Hawkes, White, R. Hawkes, Jones; Gallacher, Warner, Schofield, Macdonald, Brown, Murphy, E. Dobson, Gittins, Pickering, Barnes, Fitzpatrick, Latheron.

1907-8: Platt, Jarvis, H. Farr; Hogg, Nicholson, Dimmock, McCurdy; F. Hawkes, Jones, White, R. Hawkes; Rankin, Walders, Rigate, Hall, Brown, Pearson, Farrant, Moody, Latheron.

1908-9: Platt, Jarvis; Dimmock, McCurdy, Gregory, Chapman; F. Hawkes, Jones, R. M. Hawkes, White, Brown, Rigate, Haycock, Menzies, Braley, Stansfield, Moody, Johnson.

1909-10: Jarvis, Fry; Hedley, McCurdy, Chapman, Rayner, Ruffett, Potts; F. Hawkes, Jones, R. M. Hawkes, Slennett, Trueman; Brown, Quinn, Smith, Moody, Stansfield, Johnson, Divine, Moore, Porter, Schofield.

1910-11: Naisby, Jarvis; Wightman, Chapman, Potts, Webb, J. Ashton, C. Watson; F. Hawkes, Bushell, R. M. Hawkes, Johnson, Brown, Quinn, Walker, Smith, Stephenson, Moody, Lashbrooke, Stansfield.

1911-12: Naisby; Wightman, Potts, Ashton, A. Brown; F. Hawkes, Bushell, R. M. Hawkes, Brown, Walker, Stephenson, Moody, Stansfield, Johnson, Shepherd, Walden, Lashbrooke, Streeton.

1912-13: J. W. Day, R. Abbott, H. Bateman; C. G. Henderson, E. J. Potts, J. Jarvie; F. Hawkes, S. Thompson, T. T. Wilson, R. M. Hawkes; J. Stephenson, A. H. Wileman, W. Smith, J. Murphy, B. Holland, T. Streeton, A. Worth.

1913-14: J. T. Mitchell, R. Abbott; J. R. Elvey, J. Robinson, J. Jarvie; F. Hawkes, R. W. Frith, R. M. Hawkes, T. T. Wilson, M. Donaghy, E. Stevens, A. F. Durrant, A. H. Wileman, E. Simms, R. Brewis, F. Rollinson, J. Wilkie, S. Hoar.



*Bet with the firm you know*

# OPEN A CREDIT ACCOUNT

at

PHONE:—

2340

2341

2342

2343

2344

2345

1080

1081

LUTON

HARPENDEN

TELEGRAMS:—" REQUIRE," LUTON

56 Cambridge Street,

LUTON or at

"Klondyke"

HARPENDEN

## CARDINAL FEATURES

**STRICT PRIVACY :: PROMPT PAYMENT**

Fixed Odds Football Coupons to be obtained on application.

We accept Commissions for all Meetings under Jockey Club or N.H. Rules, Pony Racing, Dog Racing under N.G.R.C. Rules. Also at Luton Stadium.

Write for Book of Rules to

**W. H. LANCASTER**

1914-15: J. T. Mitchell, R. Abbott; J. R. Elvey, J. Dunn, J. Robinson, E. J. Potts; F. Hawkes, R. W. Frith, R. M. Hawkes, T. T. Wilson, E. G. Needham, J. Brandham; H. P. Roberts, R. N. Macfarlane, A. H. Wileman, A. Roe, E. Simms, W. Heath, F. Rollinson, J. Chipperfield, F. Lindley, S. Hoar.

(WAR INTERVAL.)

1919-20: P. Summers, R. Abbott, H. Whitehead, J. R. Elvey, J. Dunn, F. Hawkes, F. Hull; R. M. Hawkes, T. Urwin, J. Rutherford, T. Parker, J. Brandham, G. Bowler, P. Stewart; S. Hoar, W. J. Grimes, A. Roe, R. Tomlinson, D. Williams, E. Simms, L. Bookman, G. Dodd, F. J. Hensman, E. J. Seymour, H. Higginbotham, F. W. P. Hill.

1920-21: H. Bailey, J. M. Watson, R. Abbott; G. Lennon, A. Tirrell, J. Semple, F. Hull, A. Reynolds, F. J. Hensman; A. Roe, T. Parker, W. Molyneux, J. W. Lamb, H. L. Cockerill, L. R. Bayliss, W. Walsh, P. Stewart; S. Hoar, H. Higginbotham, G. Butcher, F. W. P. Hill, E. Simms, A. Mathieson, L. Bookman, H. Sidney, J. Shankland, J. McKechnie, J. Bradley.

1921-22: H. Bailey, T. Gibbon; A. Tirrell, G. Lennon, R. C. Graham, F. Hull, J. Stephenson; J. H. Foster, R. Roe, J. R. Walker, W. Molyneux, T. Parker, W. Walsh, R. Millar; E. J. Bassett, S. Hoar, H. Higginbotham, S. Reid, E. Simms, A. Mathieson, G. Butcher, L. Bookman, H. Sidney, J. Hall, H. S. Jephson.

1922-23: T. Gibbon, H. Bailey, S. Bird; G. Lennon, A. Tirrell, J. Stephenson, R. Graham; W. Jennings, A. Roe, J. Walker, W. Molyneux, J. H. Foster, R. Millar, A. Brown, T. Parker; S. Hoar, G. Butcher, S. Reid, W. Clarkson, H. Higginbotham, R. Thompson, R. Hoten, T. Irvine, R. Reader, T. Cottingham, W. Henderson, C. Bonsall, J. Grubb.

1923-24: T. Gibbon, J. Orr, W. Shepherd; R. Anderson, R. C. Graham, J. Pearson, A. Tirrell, J. Till; J. H. Foster, W. Jennings, R. Millar, W. Molyneux, A. Roe, J. R. Walker; S. Hoar, W. Henderson, G. Butcher, J. Green, A. Kerr, S. Reid, R. V. Hoten, C. Bonsall, C. Danskin.



---

---

---

# T. H. PLOWMAN

M. I. M. T.

SOLE PROPRIETOR

## *Automobile Engineer*

# *Sales*

*and*

# *Service*

## **HITCHIN ROAD, LUTON, BEDS.**

TELEPHONE: LUTON 2226/7 2 LINES

---

---

---

1924-25: G. H. Brookes, J. Orr; A. Anderson, R. C. Graham, J. Johnson, J. Till; T. Davies, W. Jennings, R. Millar, J. Mills, A. Roe, J. R. Butcher, E. S. Cockle, W. Keen, J. Shankly, A. Kerr, S. Reid, R. W. Tricker (amateur), R. V. Hoten, A. Brown, G. T. Dennis.

1925-26: H. Mingay, H. Purdy, R. Anderson, R. Graham, J. Till, S. Bedford, G. Richards, W. Jennings, J. R. Walker, R. Millar, S. Neal, A. Rennie, H. Roe, J. Miller, H. Moffat, N. Thomson, J. Shankly, S. Reid, J. Thompson, S. Littlewood, T. Love, W. Agnew, H. Rogers, G. Dennis, F. Robinson.

1926-27: W. Harper, W. E. Kaine, H. Mingay; R. C. Graham, J. Harkins, R. Kingham, R. M. Moir, D. Richards, J. Till, C. Wolstenholme; J. R. Black, C. R. Fraser, J. Fulton, J. Gordon, R. Millar, A. Rennie; W. Agnew, J. Clark, G. Dennis, R. Gillespie, H. Keeling, A. S. Nunn, F. Panther, J. Pointon, S. Reid, N. Thomson, J. T. Thompson, E. Turner, H. Woods, J. Yardley.

1927-28: H. Abbott; J. Muir, P. Spence; R. C. Graham, J. Harkins, R. Kingham, D. Richards, J. Till; J. R. Black, C. R. Fraser, J. Fulton, J. Gordon, J. Lumsden, R. Millar, J. Ramage, J. Reynolds; J. Banks, A. S. Davies, G. T. Dennis, R. G. Galloway, A. S. Nunn, F. G. Panther, J. Pointon, J. Reid, S. Reid, A. Rennie, J. Sutton, H. Woods, J. Yardley.

1928-29: H. Abbott, C. S. Banes, P. Spence; W. Curwen, R. Kingham, R. Graham, B. Harris, R. Haggarty, D. Richards; J. B. Black, J. Bodsworth, A. Clark, J. Donnelly, A. Forbes, C. R. Fraser, J. Fulton, R. Lumsden, R. Millar, J. Reynolds; L. Bedford, W. Birch, R. Boylen, A. Craigie, J. Daly, G. T. Dennis, A. Hutchinson, A. S. Nunn, A. Rennie, T. Roe, J. Scott, W. Sheldon, W. Vaughan, A. V. Walters, W. Winnell, H. Woods, J. Yardley.

1929-30: C. S. Banes, G. B. Harford; F. G. Barber, W. Curwen, R. Kingham, D. Richards, E. Smith, R. Walker; J. R. Black, A. Clark, C. R. Fraser, J. Fulton, E. W. H. Gale, R. Millar, F. G. Morgan, A. Smeaton; L. Bedford, W. Birch, R. Boylen, W. Brown, J. Daly, J. Drinnan, A. Harwood, A. Hutchinson, W. McInnes, A. Rennie, W. J. Rickett, W. Sheldon, W. Winnell, H. Woods, J. Yardley.



# SPORTS GOODS

YOU CAN RELY ON



Special  
Terms  
to  
Clubs

FREE

Send a postcard  
now for Fully  
Illustrated Win-  
ter Sports Catalogue with coloured  
Jersey Pages. Postage Paid.

SPECIAL OFFER TO CLUBS IN  
THE LUTON LEAGUE.

Full Sized Hand Sewn Footballs 12  
Panels, complete with Bladder.  
Guaranteed, 8/6 Nett. Post Paid.

EVERYTHING FOR SPORT SUPPLIED.

FOOTBALL, BADMINTON,  
HOCKEY, CRICKET, GOLF,  
TENNIS, BOXING, BOWLS,  
ATHLETICS and BILLIARDS.

Every article is backed by an all-round guarantee.

**E. J. RILEY, Ltd.,** DURHAM MILLS,  
ACCRINGTON

LONDON SHOWROOMS: 147, ALDERSGATE STREET. E.C.

1930-31: C. S. Banes, G. B. Harford; T. Hodgson, R. Kingham, W. Knox, D. Richards, E. Smith; A. Clark, C. R. Fraser, E. W. H. Gale, A. Hale, H. McGinnigle, J. B. Muir, J. E. Page, J. Richmond; J. Armstrong, W. Brown, R. S. Bryce, F. Dent, A. Heslop, G. M'Nestry, A. Rennie, W. Rickett, J. Slicer, P. Smart, J. Yardley.

1931-32: G. B. Harford, J. Imrie; T. Hodgson, R. Kingham, W. Knox, G. C. Wilson; W. Brown, R. S. Bryce, C. R. Fraser, E. W. Gale, A. Hale, V. Jones, F. W. Kean, H. McGinnigle, W. Miller; A. S. Black, W. Cupit, J. Chapman, A. Heslop, H. Loasby, G. M'Nestry, A. Rennie, D. Rowe, J. Slicer, T. Tait, G. Turner, A. Wales, J. Yardley.

1932-33: G. B. Harford, J. Imrie; S. A. Coote, T. Hodgson, A. Ives, R. Kingham, T. S. Mackey; W. Brown, B. Diaper, C. R. Fraser, A. Hayhurst, F. W. Kean, H. McGinnigle; T. Alderson, W. Corkindale, W. C. Hutchison, A. Mills, A. Nelson, A. Rennie, J. Roberts, D. Rowe, T. Tait, R. S. Weaver, R. Whalley.

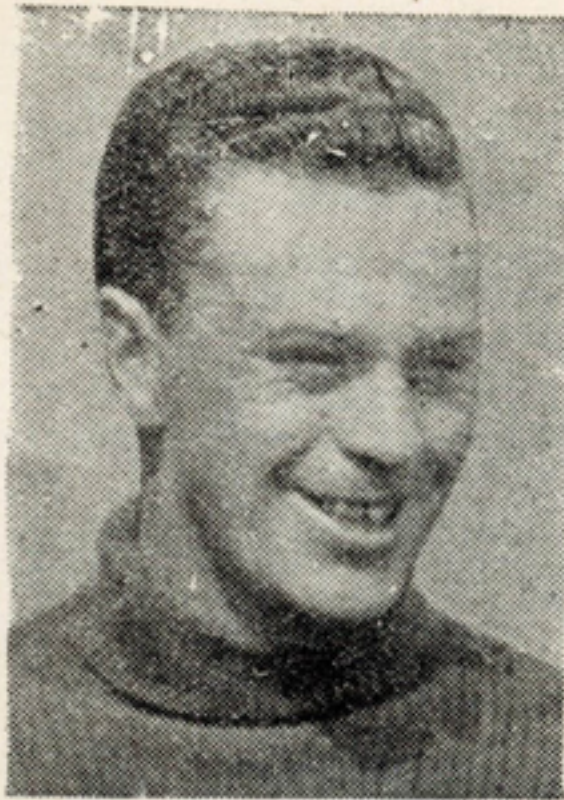
1933-34: G. B. Harford, J. L. Mittell; S. A. Coote, J. S. Gibson, R. Kingham, T. S. Mackey, H. Reece, W. Beck, W. Brown, C. R. Fraser, F. W. Kean, H. Lawson, McGinnigle, J. Rennie, W. Seddon; S. Anderson, S. Bell, T. Bell, L. Hargreaves, F. Holbeach, D. Hutchison, D. Kirkwood, G. S. Martin, G. Pearson, A. Rennie, T. Tait.

1934-35: J. L. Coen, G. B. Harford, C. J. Preedy, S. A. Coote, R. Kingham, T. S. Mackey, H. J. Reece, T. S. Smith, W. Beck, W. Brown, D. Colquhoun, C. R. Fraser, F. W. Kean, G. I. Kidd, H. McGinnigle, J. Payne, W. Thayne; J. Ball, S. Bell, T. Bell, C. Cook, W. Crompton, W. Haggard, H. Hackett, W. Harrison, D. Hutchison, G. S. Martin, L. Murphy, W. Pease, A. Rennie, F. Roberts, J. R. Russell, G. Stephenson, J. T. Taylor.

1935-36

J. L. Coen, H. Dolman, H. M'Intosh; H. Booton, S. C. Coote, A. Hubbard, R. Kingham, T. S. Mackey, T. S. Smith; D. Colquhoun, W. J. Fellowes, C. R. Fraser, W. P. B. Godfrey, H. Gooney, G. I. Kidd, H. M'Ginnigle, J. Nelson, W. Thayne; H. Andrews, J. Ball, F. E. Beresford, W. G. Boyd, C. Cook, W. Crompton, M. S. Crook, J. Hodge, G. S. Martin, J. Payne, L. Rich, F. Roberts, F. Sloan, G. Stephenson, R. Stevens, J. T. Taylor, G. Turner.





### Joseph L. Coen

(Goalkeeper)

Third season at Luton. Born at Glasgow. Clydebank was his first notable club, and then followed Glasgow Celtic, Guildford City, Bournemouth and Boscombe. Tried by Luton, he made good his position, and was first choice custodian until late last season. Timekeeper in a shipyard before coming south. Golf is his pastime. 5ft. 10½in.; 12st. 12lb.

### Thos. S. Mackey

(Full Back)

Fourth season. Native of Cassop, Co. Durham. Originally a centre-half, first professional club was Hartlepool United, and then he had three seasons with Sheffield Wednesday. Came to Luton and was developed successfully at full back. Can play with either flank. Strong and determined player. 5ft. 10½in.; 12½st.



### Humphrey W. Dolman

(Goalkeeper)

Bloxwich born. came to Luton last March from Bristol City. Had early experience with Blakenhall and Willenhall, and thence to Chesterfield for several seasons. Was ever present in Chesterfield's promotion side of 1930-32. To Bristol City two seasons ago, and his transfer strengthened Luton's defensive forces. Has won eighteen medals. Is crack table tennis player, and interested in pigeon racing. Furnaceman before professional footballer. 5ft. 11½in.; 13s. 10lb.



### Roland Kingham

(Full Back)

Born at Harpenden. Tenth season at Luton, so is the oldest retention of the club. From Harpenden Town, he went to St. Albans City, and was signed by the Town in 1926. Consistent defender, who still has many years to go in the game. Good all-round cricketer. 5ft. 11in.; 11st. 10lb.





## Thos. S. Smith

(Full Back)

Third season. Born at Higham, near Burnley. Played for Higham, and later for Leeds Training College. Turned out for Nelson and Rochdale as a centre-half during three seasons, and on coming to Luton was a success as a flank half, and an even greater success at full back. Grand fellow in every way. School teacher in Luton. Likes cricket, lawn tennis and swimming. 5ft. 10in.; 12st.

## Arthur Hubbard

(Full Back)

Second season. Birmingham born. From works' clubs went to Moor Green, and then was signed on by Birmingham as a professional. After two seasons at St. Andrew's, he came to Luton. Is a stern tackler, and has a powerful kick. Cricket and lawn tennis he likes, too. Gas cooker inspector before professional footballer.



## Harold Booton

(Full Back)

Hails from Annesley, Notts. From junior football, went to Shirebrook, a strong Midland side, and thence to Birmingham in 1928 remaining with the First Division club until transferred to Luton in February last. Stoutly built and fearless defender. Clerk before professional footballer. Golf and bowls his recreations. 5ft. 10in.; 12st. 4lb.

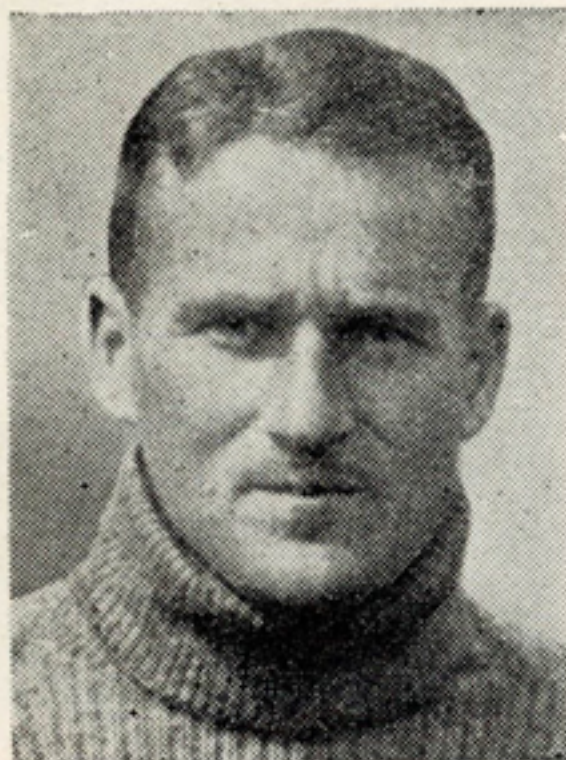


## John Finlayson

(Half-back)

Second season. Born at Thornliebank, Scotland. From an amateur side of his native village, went to Motherwell as a forward, and later to Cowdenbeath. Left there for Clapton Orient, became a half back, and then a full back. Reverted to half at Luton and became a power as an attacking player. 5ft. 11in.; 12st.





## Wm. J. Fellowes

(Half-back)

Second season. Born at Bradford, but moved to Tavistock as a youngster. Played for Tavistock Town until Plymouth Argyle made him a professional. After three seasons, went to Clapton Orient, and was transferred to Luton last season. Was centre-half, but took over the left flank position with success. Has sports outfitting business at Tavistock. Cricket and golf his hobbies. 5ft. 9½in.; 12st.

## John Nelson

(Centre half-back)

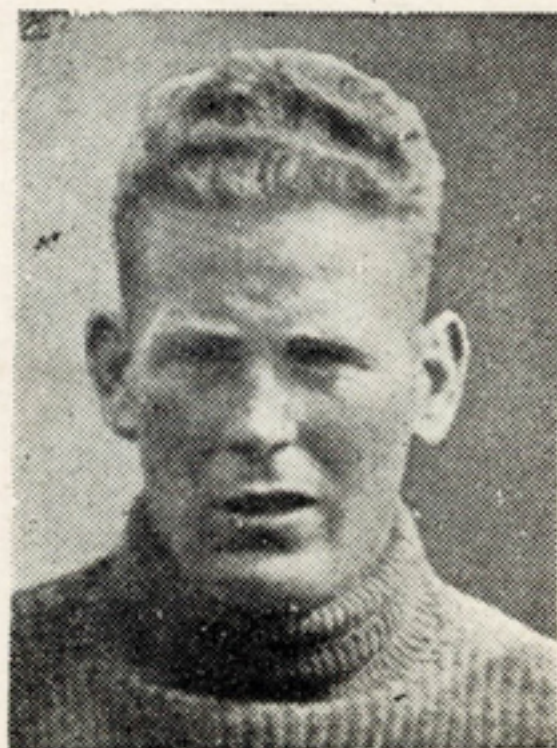
Second season. Born at Chorley. Played for Chorley All Saints' before joining Chorley, the Lancashire Combination club. Transferred to Preston North End, and later to Wolverhampton Wanderers: after three seasons at the Molyneux Ground was transferred to Luton last season. When settled down he became a grand defensive pivot, and had a great part in the team's success. Is useful cricketer; in bleaching trade before professional football. 6ft. 1½in.; 12½st.



## Fk. E. Beresford

(Inside-forward)

Second season. Born at Chesterfield. From Owston Park Rangers, went to Doncaster Rovers, and was later transferred to Preston North End with whom he remained two seasons, and was a member of the promotion side. Transferred to Luton last season, and although not retaining his place in the first team, gave splendid service to the club. Should be an important factor this term. Likes cricket, lawn tennis and golf. Miner before professional footballer. 5ft. 6½in.; 10st. 10lb



## Hugh McGinnigle

(Centre half-back)

Seventh season. Born at Bargeddie, Lanarkshire. From local club, was signed by Falkirk as a professional, and after three seasons, came to Luton. Has been credit to his native Scotia and to Luton. Always reliable in emergency. Endowed with remarkable stamina. Was needle operator before he became a professional footballer. 5ft. 10½in.; 12st.





### John T. Ball

(Centre-forward)

Third season. Born at Banks, Southport. From Banks went to Southport, when in his middle teens, and later played for Chorley, Manchester United, Sheffield Wednesday, and Manchester United again. Left for Huddersfield, but after a few weeks was transferred to Luton last season but one. Unselfish leader, rare worker, and very clever with his head. In fish and fruit trade before professional footballer. 5ft. 10in.; 12st 9lb.

### Joseph Payne

(Centre-forward)

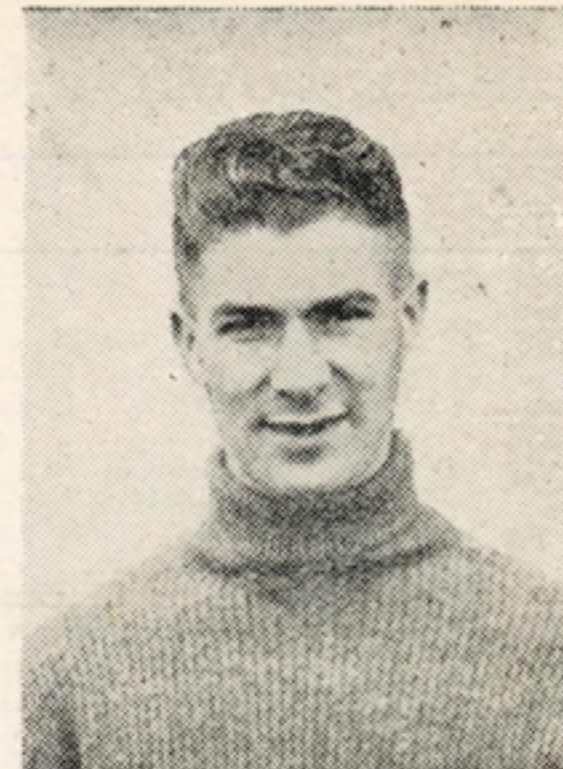
Third season. Born at Bolsover. Came to Luton on trial as a centre forward three seasons ago. After a term with Biggleswade was brought to Luton and developed as a half back, where he came on tremendously. Tried in emergency as a centre forward again last Easter Monday, he broke the League goal scoring record by scoring ten of twelve goals against Bristol Rovers. Fine all round cricketer. Miner before professional footballer. 5ft. 10½in.; 12st.



### Wm. H. Gooney

(Half-back)

Born at Sheffield. Joined Luton from Plymouth Argyle last February. Was schoolboy international, and became office boy for Sheffield United; was developed at Bramwell-lane ground. Gained first team place in United side in 1929; transferred Plymouth last season, and then to Luton in February last. Clever and speedy. Useful cricketer. 5ft. 10in.; 10st. 12lb.



### William P. B.

Godfrey

(Half-back)

Born at Stenhousemuir, Stirling. From Alva Albion Rangers, he went to Aberdeen, whence after one season, he was transferred to Plymouth Argyle. Was in his second season at Home Park when transferred to Luton in February last. Very speedy and clever, of attacking proclivities. Has eight medals. Likes golf. Was a fitter by trade. 5ft. 10in.; 10st 10lb.



# Luton Town F.C. 1st XI. Fixtures, 1936-37 - (Division III.—Southern)

Date.	Opponents.	Ground.	Goals		Date.	Opponents.	Ground.	Goals	
1936					1937.				
			For	Against				For	Against
Aug. 29	Southend United	H... (1—2)	1-0-0-0-0-0-0-0-0-0	0-0-0-0-0-0-0-0-0-0	Jan. 2	Cardiff City	H... (2—2)	2-0-0-0-0-0-0-0-0-0	0-0-0-0-0-0-0-0-0-0
" 31	Walsall	A... (—)			" 9	Crystal Palace	A... (1—5)		
Sep. 5	Cardiff City	A... (3—2)			" 16	(3) Swindon Town	H... (2—1)		
" 7	Walsall	H... (—)			" 23	Exeter City	H... (3—1)		
" 12	Crystal Palace	H... (6—0)			" 30	(4) Reading	A... (1—2)		
" 16	Torquay United	A... (1—2)			Feb. 6	Queen's Park Rangers	H... (2—0)		
" 19	Exeter City	A... (2—1)			" 13	Bristol City	A... (2—1)		
" 26	Reading	H... (2—1)			" 20	(5) Watford	A... (3—1)		
" 30	Boscombe (S.S. Cup)	H... (—)			" 27	Brighton	H... (2—1)		
Oct. 3	Queen's Park Rangers	A... (0—0)			Mar. 6	(6) Boscombe	A... (1—2)		
" 10	Bristol City	H... (1—0)	" 13	Northampton	H... (3—3)				
" 17	Watford	H... (2—1)	" 20	Bristol Rovers	A... (2—2)				
" 24	Brighton	A... (1—1)	" 26	Clapton Orient	A... (0—3)				
" 31	Boscombe	H... (0—0)	" 27	Millwall	H... (0—0)				
Nov. 7	Northampton Town	A... (0—0)	" 29	Clapton Orient	H... (5—3)				
" 14	Bristol Rovers	H... (12-0)	Apl. 3	Swindon	A... (0—3)				
" 21	Millwall	A... (0—0)	" 10	(S.F.) Aldershot	H... (2—2)				
" 28	F.A. Cup First Round		" 17	Gillingham	A... (1—0)				
Dec. 5	Aldershot	A... (1—0)	" 24	Newport	H... (7—0)				
" 12	(2) Gillingham	H... (1—2)	May 1	(F) Torquay	H... (1—0)				
" 19	Newport County	A... (2—0)							
" 25	Notts. County	H... (1—0)							
" 26	Southend	A... (1—0)							
" 28	Notts. County	A... (3—0)							

Walsall take the place of Coventry City, promoted to Second Division.

**First for  
Thirst!**

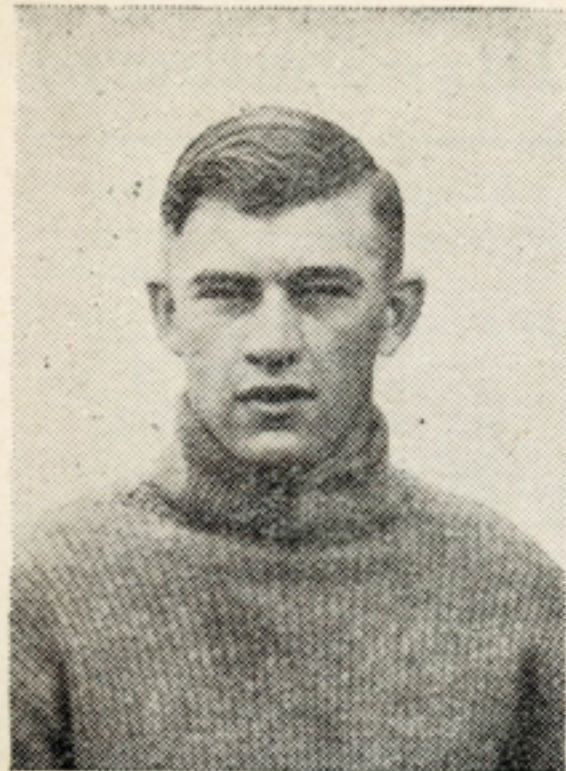
**J. W. GREEN'S**

**LUTON'S BREW—FIRST PRIZE, TOO**

J. W. GREEN LTD., THE BREWERY, LUTON.

TELEPHONE LUTON 1454





## Ronald F. Stevens

(Wing-forward)

Second season. Lutonian, and played for Bromlea United before joining Hitchin Town at the beginning of last season. His great promise induced the Town to sign him, and he played many fine games for the London Combination side. Should win his spurs this year and develop into a good class winger. Moulder by trade. 5ft. 7in.; 10½st.

## Leonard T. Rich

(Wing-forward)

Born at Plymouth. Played for the local Co-operative Stores team before joining Torpoint, where his goal scoring feats won the attention of Plymouth Argyle. Was originally a centre forward, but became a winger, his speed and good control attracting the attention of Luton Town scouts last February. Won a place in the first eleven and proved good on either wing. Likes cricket and lawn tennis. Salesman before professional footballer. 5ft. 9½in.; 11st. 3lb.



## Hugh Mills

(Centre-forward)

Recruit. Born at Alexandria, Scotland. Played for Bridgeton Waverley when spotted by Mr. Ned Liddell, the present Luton manager, then with West Ham United. Had three seasons with the "Hammers," and was a great success last season but one until illness kept him out of the game. Returned to Scotland and last season was with Celtic. Dashing player with a grand shot. Golf his hobby. 5ft. 8in.; 10½st.

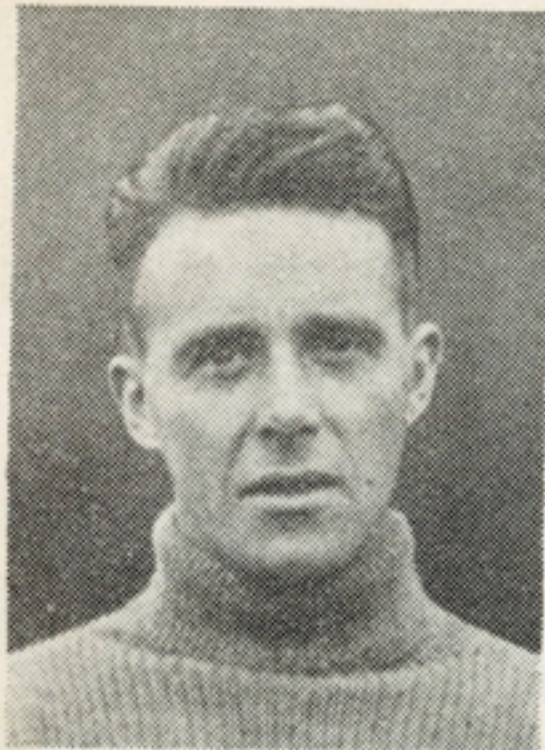


## Joseph C. Patick

(Centre-forward)

Recruit. Born at Carlisle, and played in local football before joining Carlisle United. Thence he went to Lancaster Town, who later transferred him to Bury, where he has had three seasons. A sturdy leader with a powerful shot, should make good at Luton. Likes cricket and pigeon racing. Was a boilermaker by trade. 5ft. 10½in.; 11st. 3lb.





## George S. Martin

(Inside-forward)

Fourth season. Born at Glasgow. First professional club was Hamilton Academicals when he was still apprenticed as a sanitary engineer. Subsequently played for Hull City, Everton and Middlesbrough. Holds League Championship medals for First and Second Division. Great schemer, playing as well as ever after many years in the game. Tenor vocalist of class. Golf and bowls are his pastimes. 5ft. 9½in.; 11½st.

## Fred Roberts

(Inside-forward)

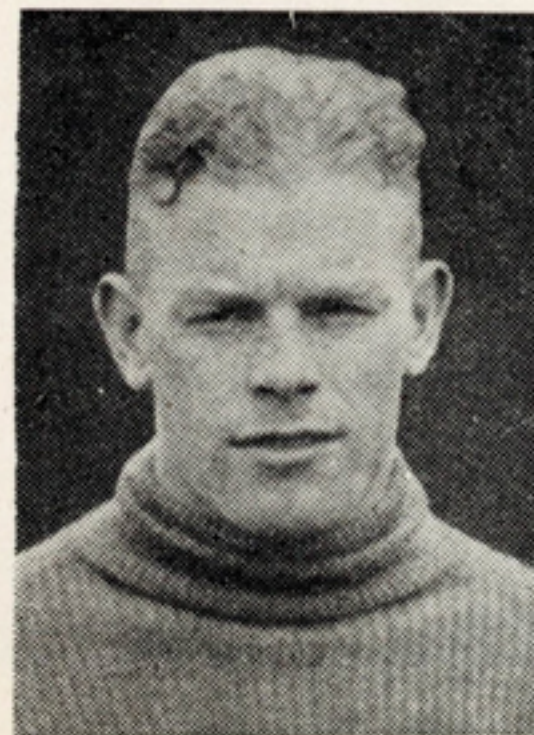
Third season. Born at Birmingham. From junior football, went to Smethwick Highfield and thence to Piggott's Works, from which club Birmingham signed him as a professional. After a season, was transferred to Luton and has been a regular first team player ever since. A grand club player, tireless worker, and very unselfish. Likes lawn tennis, bowls and fishing. 5ft. 8in.; 11½st.



## John Hodge

(Wing-forward)

Born at Plymouth. Played for St. Austell, Truro City and Green Waves (Plymouth) before being signed as a professional by Plymouth Argyle. After two seasons at Home Park, he was transferred to Bristol City last season but one, and duly passed on to Luton in March last. Is speedy and tricky, and although unfortunate in the matter of injuries, should be a great asset to the side this season. Lawn tennis is his favourite pastime. Salesman before becoming professional footballer. 5ft. 9in.; 10st.



## Geo. Stephenson

(Wing-forward)

Third season. Born at Shillington, Durham, and from his village went to Durham City, but was speedily transferred to Aston Villa. Had three terms at Villa Park and was then transferred to Luton. Has played many brilliant games since then, and on his day is irresistible. Very tricky, and has a good shot. Was a miner before football professional. 5ft. 9in.; 12st.



**Mr. Archie Wickson**  
(The Secretary)

Has almost grown up into the job. He was appointed in 1929 as assistant to the late John M'Cartney, and by close application to his duties has won the confidence of the directors. During the close season has been elected a member of the Beds F.A. Council, and has already won praise for his work on the Executive of the Luton and District League. Gets in a bit of cricket during the summer, and would like more, but secretaries continue to work when players rest.



**Horace Pakes**

(Trainer)

Age cannot wither him although his hair grows whiter. Has been training and coaxing and jolting players for umpteen years, and looks like going on until there is no football. Several times has spoken of retiring, but turns up with new tan (South Coast usually) every August. His tenth year as first team trainer.



**Wilfred Crompton**

(Wing-forward)

Third season. Born at Blackburn, son of Robert Crompton, the famous International full back. From Blackburn Corinthians, went to Blackburn Rovers and later served with Burnley. In motor trade before professional football, and still has business ties. Illness and a "knee" kept him out of the side at the end of last season, but has made a good recovery. Lawn tennis and golf his pastimes. 5ft. 8in.; 11st.



**Bert R. Lutterloch**

(Inside-forward)

Recruit. Born in London. Played for Tufnell Park before becoming a professional for Lille, the French club. Helped them to win the Championship of France in 1933. Returned to England and signed for Wolverhampton Wanderers; after two seasons went to Aldershot last season but one. Powerfully built, is a good shot, and is very speedy. Was working for a gas company before becoming a professional footballer. 5ft. 10in.; 11st. 10lb.







**Mr. Edward Liddell**

(The New Manager)

Luton Town's new manager, first saw the light of day at Whitburn, Co. Durham, famous as a football nursery. How long ago matters not, but long before the Great War he played for Southampton, and subsequently for Southend United, Clapton Orient and the Arsenal. After the war he had experience of managerial duties with Southend, Queen's Park Rangers and Fulham, and in more recent years has been the main scout for West Ham United, for whom he has rendered notable service.

Mr. Liddell is confident that Luton have the players capable of winning promotion, and once that is attained he does not fear the future.

**Frank J. Sloan**

(Inside-forward)

Born at Airdrie, and played for Cambuslang Rangers and Shieldmuir Celtic before he was taken to Plymouth Argyle when he was seventeen years old. Had fourteen seasons with the Argyle, and in spite of the keen competition for places in the famous Devonshire side, he had over 200 League games to his credit. Very clever and capable of bringing out the best from his partner on the wing. Was a steel worker by trade 5ft. 9in.: 11st.



**Bert Day**

(Groundsman)

Has been filling up the holes and the puddles and whistling for the grass seeds to break out ever since 1920 season. The ground appears to look better every year, but gets sadly knocked about. Has plenty to keep him occupied for the year, and does his job conscientiously.





# Luton Town F.C. 2nd XI. Fixtures,

Date.	Opponents.	Ground.	Goals	
1936			For	Against
Aug. 29	Reading .....	A... (2-7)		
" 31	Southend .....	H... (2-2)		
Sept. 5	Portsmouth .....	H... (2-2)		
" 9	Southend .....	A... (3-0)		
" 12	Charlton .....	A... (3-4)		
" 19	Tottenham Hotspur .....	H... (3-0)		
" 21	Leicester C. ....	H... (6-1)		
" 26	Chelsea .....	A... (1-3)		
Oct. 3	Queen's Park Rangers...	H... (1-1)		
" 7	Crystal Palace .....	A... (1-2)		
" 10	Bristol City .....	A... (2-2)		
" 17	Swansea .....	A... (2-3)		
" 24	Southampton .....	H... (4-3)		
" 26	Leicester .....	A... (1-0)		
" 31	Brentford .....	A... (3-4)		
Nov. 7	Fulham .....	H... (2-2)		
" 14	Arsenal .....	A... (2-0)		
" 21	Millwall .....	H... (3-4)		
" 28	Coventry .....	A... (1-3)		
Dec. 5	Northampton .....	H... (7-2)		
" 12	Boscombe .....	A... (4-1)		
" 19	Brighton .....	H... (7-0)		
" 25	Clapton Orient .....	A... (1-5)		
" 26	Reading .....	H... (3-2)		
" 28	Clapton Orient .....	H... (6-0)		

# 1936-37 - (London Combination)

Date.	Opponents.	Ground.	Goals	
1937			For	Against
Jan. 2	Portsmouth .....	A... (0—5)		
„ 9	Charlton .....	H... (1—3)		
„ 23	Tottenham Hotspur .....	A... (3—9)		
„ 30	Chelsea .....	H... (0—1)		
Feb. 6	Queen's Park Rangers...	A... (0—1)		
„ 13	Bristol City .....	H... (6—2)		
„ 20	Swansea .....	H... (3—1)		
„ 27	Southampton .....	A... (3—2)		
Mar. 6	Brentford .....	H... (4—1)		
„ 13	Fulham .....	A.. (0—10)		
„ 20	Arsenal .....	H... (3—2)		
„ 26	West Ham .....	H... (5—2)		
„ 27	Millwall .....	A... (1—4)		
„ 29	West Ham .....	A... (1—6)		
Apl. 3	Coventry .....	H... (5—0)		
„ 10	Northampton .....	A... (1—2)		
„ 14	Crystal Palace .....	H... (5—0)		
„ 17	Boscombe .....	H... (1—1)		
„ 21	Watford .....	A... (3—1)		
„ 24	Brighton .....	A... (1—0)		
„ 28	Watford .....	H... (4—3)		

**A new Football Special!**

**The "Sammy" 45/-**

ABSOLUTELY WATERPROOF ::

★ ————— CHARLES MARES LTD.,

**D.B. Trench Coat**

WELL CUT :: FLEECE LINED

GEORGE STREET & DUNSTABLE ROAD, LUTON



# WATERLOWS (Dunstable) F.C.

Hon. Sec. and Team Manager, Mr. W. W. Goodyear.

1936

Aug. 29—\*Aylesbury ..H  
 Sept. 5—F.A. Cup  
 " 5—\*Lyons .....A  
 " 5—†Stewartby ..H  
 " 12—\*Slough .....A  
 " 12—†Camb. T. ..H  
 " 19—F.A. Cup  
 " Arlesey T. ..H  
 " 19—†Wolverton T. A  
 " 26—Amateur Cup  
 " 26—†Kettering T. H  
 Oct. 3—F.A. Cup  
 " Eynesbury or  
 " Biggleswade ..A  
 " 3—†Rushden T. H  
 " 10—Amateur Cup  
 " 10—†Bedford T. ..H  
 " 17—F.A. Cup  
 " 17—†Kempston R. A  
 " 24—Amateur Cup  
 " 24—\*Lyons .....H  
 " 24—†Kettering T. A  
 " 31—F.A. Cup  
 " 31—\*Chesham ..A  
 " 31—†Wolverton T. H  
 Nov. 7—Amateur Cup  
 " 7—\*Wind. & E...H  
 " 7—†Bletchley S. A  
 " 14—F.A. Cup  
 " 14—\*Metro. Pol...A  
 " 14—†Kempston R. H  
 " 21—Amateur Cup  
 " 21—Senior Cup  
 " 28—\*Callenders ..H  
 " 28—†Baldock T. ..A  
 Dec. 5—\*Maidenhead H  
 " 5—†Duns'ble A...A  
 " 12—\*Hoddesdon ..A  
 " 12—†Vauxhall ..H  
 " 19—\*Hitchin T. ..H  
 " 19—†Hitchin T. ..A

\* Spartan League.

† S'th Midlands League.

‡ Friendly.

1937

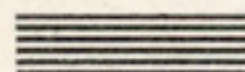
Jan. 2—Senior Cup  
 " 9—\*Camb. T. ..H  
 " 9—†Vauxhall ..A  
 " 16—\*Hoxton M...A  
 " 16—†Duns'ble A...H  
 " 23—†Three C. Hos.A  
 " 23—†Bletchley S...H  
 " 30—\*Aylesbury ..A  
 Feb. 6—\*Camb. T. ..A  
 " 6—†Eynesbury ..H  
 " 13—Senior Cup  
 " 13—†Bedford T...A  
 " 20—\*Callenders ..A  
 " 20—†Baldock T...H  
 " 27—\*Jurgens ....H  
 " 27—†Stewartby ..A  
 Mar. 6—\*Slough ....H  
 " 6—†Rushden ....A  
 " 13—\*Wind. & E...A  
 " 20—\*Chesham ..H  
 " 20—†Eynesb'y R...A  
 " 27—\*Hoxton M...H  
 " 27—†Camb. T. ..A  
 " 29—\*Maidenh'd ..A  
 Apr. 3—\*Metro. Pol...H  
 " 10—\*Jurgens ....A  
 " 17—\*Hoddesdon ..H  
 " 24—†Hitchin T. ..H  
 " 24—\*Hitchin T...A

F.A. Cup—English Chal-  
 lenge Cup.

Senior Cup—Beds Senior  
 Cup.



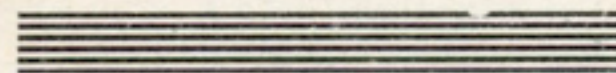
OR



SERVICE AND  
 SATISFACTION  
 IN BUYING A  
 SECONDHAND  
 MOTOR CYCLE

TRY

CLAREMONT GARAGE



FIRST

58a LEAGRAVE ROAD, LUTON

ALSO SECONDHAND SPARES FOR  
 ALL MAKES OF MOTOR CYCLES



# Bedfordshire Football Association

## COUNTY CUP HOLDERS

Premier . . . . . Luton Town      Senior . . . . . Waterlow's  
Junior . . Marston Shelton      Minor . . Bedford Igranle

President: Mr. C. Green, 73, Hazelbury Crescent, Luton.

Vice-Presidents: Mr. A. Tearle, 16, Kenilworth Road, Luton; Mr. E. Humphreys, 22, Rosamond Road, Bedford; Mr. T. Ferguson, "Brandleside," Luton Road, Biggleswade.

Trustees: Mr. C. Green, 73, Hazelbury Crescent, Luton; Mr. E. Humphreys, 22, Rosamond Road, Bedford.

Auditors: Mr. W. J. Emery, 36, Alexandra Avenue, Luton; Mr. R. K. Brown, 248, Dunstable Road, Luton.

Hon. Sec. and Treasurer: Mr. Albert E. Ansell, 32, King Street, Luton.

## AFFILIATED LEAGUES AND COMPETITIONS.

Bedford County Hospital Cup. A. J. Fielder, Post Office, Kempston.

Bedford and District League (1919). E. W. Taylor, 3, Westfield Road, Bedford.

Bedford and District Thursday Cup (1908). D Butler, 89, Salisbury Street, Bedford.

Bedford and District Thursday League (1906). D. Butler, 89, Salisbury Street, Bedford.

Beds Constabulary A.C. Challenge Cup (1928). P.c. F. Montague, Police Station, Dunstable.

Biggleswade and District League (1908). A. H. Scott, 62, The Baulk, Biggleswade.

Leighton and District Cup (1913). A. F. Hubbins, 83, Hockliffe Street, Leighton Buzzard.

Luton and District League (1898). F. E. Hawkes, Millfield Road, Luton.

Luton and District Charity Cup. F. E. Hawkes, Millfield Road, Luton.

South Beds Football Combination. H. A. Chambers, 160, Hitchin Road, Luton.

Luton Wednesday League. H. T. Hill, 9, Collingdon Street, Luton.

Luton Wednesday Cup. H. T. Hill, 9, Collingdon Street, Luton.

North Beds Charity Cup (1907). A. H. Scott, 65, The Baulk, Biggleswade.

South Midlands League (1922)). A. E. Ansell, 32, King Street, Luton

# GERMATOXYL

(THE INFLUENZA MIXTURE THAT KILLS THE GERM)

V

## INFLUENZA and Common Cold United.

There is never any doubt about this match. The dose before decides the result. With a dose after—next week's match **YOU** meet with laughter.

Sole Makers:

*Wootton & Webb Ltd.,*  
Chemists and Opticians,

20, GEORGE STREET, — *Luton,*  
And 22, UPPER GEORGE STREET,  
And 82, HIGH STREET, HARPENDEN.

1/3, 3/- per bottle.



## CLUBS IN BEDFORDSHIRE

**Aley Green.** a V. S. Banks, 7, Aley Green, nr. Luton.  
b Tipple Hill Farm Meadow. c Shirts, scarlet with blue sleeves and collar, blue knickers.

**Amphill Town Corinthians.** a E. E. G. Billington, 35a, Church-street, Amphill. b Amphill Park. c White shirts with black chest band, black knickers with white stripes.

**Arlesey Corinthians.** a L. E. Charles, 23, Stotfold Road, Arlesey. b The Bury Meadow. c Red shirts, blue knickers.

**Arlesey Town.** a R. G. Cheshire, "Cheniston," House Lane, Arlesey. b The Bury Meadow. c Light and dark blue shirts (halves), blue knickers.

**Barton United.** a T. Burrows, High-street, Barton. b Falder Road. c White shirts, black knickers.

**Bedford Alexandria.** a E. G. Lilley, 6, Westbourne Road, Bedford. b Russell Park. c Shirts, red with white sleeves, black knickers.

**Bedford Britannia Sports & Social Club.** a R. H. Manning, 48, St. Paul's Road, Bedford. b Bedford Park. c Red and white shirts, black knickers.

**Bedford Corinthians.** a K. G. Simmons, 73, Garfield Street, Bedford. b Bedford Park. c White shirts black knickers.

**Bedford Eastern National.** a E. Howe, 10, Newton Road, Bedford. b Russell Park. c Green and white shirts, blue knickers.

**Bedford Franklins.** a F. J. Lilley, 6, Westbourne Road, Bedford. b Russell Park. c Red shirts, black knickers.

**Bedford Gas Athletic.** a N. F. Jeffries, c/o Gas Works, Bedford. b Lawrence Street. c Light and dark blue quarters, dark blue knickers.

**Bedford Harpur United.** a E. P. Toms, 29, Holme Street, Bedford. b Bedford Park. c Red and green quarter shirts, black knickers.

**Bedford Igranic.** a S. W. Worker, 5, Church Walk, Kempston. b King William IV & Sports Ground, Kempston. c White and Green quarters, black knickers.

**Bedford Meltis.** a Secretary, Meltis Club, c/o Meltis Ltd., Miller Road, Bedford. b Miller Road. c Maroon and white quarters reversed, white knickers.

**Bedford North End.** a J. Wignall, 137, Tavistock Street, Bedford. b Astells Field, Cardington Road. c Red shirts, black knickers.

**Bedford Post Office.** a D. Butler, 89, Salisbury Street, Bedford. b Russell Park. c Black and white striped shirts, blue knickers.

## The DUJON Restaurant

OVER

Electricity Showrooms,

Upper George St., Luton

---

Entrance through the Showroom

---

Popular Prices — Varied Menu

Comfort

Service

and

Good

Quality

Football Teams and Parties Specially

Catered for.

Telephone - 651.



Bedford Queen's Park Rangers. a L. H. Shadrake, 6, Havelock Street, Bedford. b Russell Park. c Navy blue shirts, white knickers.

Bedford Queen's Works A.F.C. a C. H. Cartlidge, 10, St. Paul's Road, Bedford. b Allen Park. c Royal blue shirts, white knickers.

Bedford St. Cuthbert's. a S. G. Harris, 45, Dudley Street, Bedford. b Russell Park. c Black with amber V shirts, black knickers.

Beds Constabulary Athletic Club. a P.c. F. Montague, Police Station, Biggleswade. c Black and amber quarters, black knickers.

Biggleswade & District. a W. Rogers, 33, Lindsell Crescent, Biggleswade. b Fairfield. c Green shirts, white knickers.

Biggleswade United. a R. Scott, 36, Rose Lane, Biggleswade. b Fairfield Road. c Royal blue with white V and cuffs, white knickers.

Biscot Sports. a W. S. Adams, 1, Mostyn-road, Luton. b Blundell Road Recreation Ground. c Black and amber squares, black knickers.

Caldecote Stars. a E. T. Page, "The Royal Oak," Caldecote. b Mrs. Taddy's Meadow. c White shirts, blue knickers.

Campton. a K. T. G. Doggett, 29, Priory Road, Campton. b Recreation Ground. c Black with amber V shirts, black knickers.

Cranfield United. a A. G. Holman, 5, Bedford Road, Cranfield. b Court Road. c Red shirts, white sleeves and collars, white nickers.

Depot The 16th Foot. a Sgt. A. Foster, Kempston Barracks, Bedford. b Kempston Barracks. c Black and primrose shirts, black knickers.

Duloe & Eaton. a L. G. Beal, Duloe, nr. St. Neots. Hunts. b Old Cricket Field, Eaton Socon. c Blue and white quarters, white knickers.

Dunton. a R. Humberstone, 24, High Street, Dunton. b Millow. c Sky blue shirts, navy facings, white knickers.

Dunstable Athletic Club. a L. Palmer, 40, Borough Road, Dunstable. b Houghton Road. c Royal and white looped shirts, white knickers.

Dunstable Wanderers. a L. B. Bland, 48, Benning Avenue, Dunstable. b Dunstable Recreation Ground. c White shirts, black knickers.

Electrolux. a H. E. Flitton, Drawing Office, Electrolux. b Electrolux Sports Ground. c Yellow and green shirts, black knickers.

Elstow Abbey. a L. H. Wells, 216, Elstow, Bedford. b Warren, Elstow. c White shirts, black knickers.

# STRAW HAT Manufacturers—

RESULTS TELL  
and you always SCORE  
if you consult Janes  
Bros. for your machine.

**JANES BROS., LTD.**

ENGINEERS TO THE STRAW  
TRADE SINCE 1888

**38 HIGH TOWN ROAD,  
LUTON.** Phone 242



Everton. a G. Peck, 18, Everton, Nr. Sandy. b Recreation Ground. c White shirts, blue knickers.  
 Flitwick Ramblers. a H. Gazeley, Froghall Farm, Flitwick. b Fortfield Meadow. c Royal and amber shirts, black knickers.  
 Flitwick Rovers. a M. Cherry, 10, Water Lane, East End, Flitwick. b Recreation Field. c 1st team red shirts, 2nd team blue shirts, white knickers.  
 Gentle's Athletic Club (Stotfold). a K. S. Vardy, 5a, Coppice Mead, Stotfold. b Roker Park. c Royal blue shirts, white knickers.  
 Girtford Rovers. a A. E. Ibbott, 91, London Road, Sandy. b The Drift. c Royal blue shirts, white knickers.  
 Goldington. a H. Luff, 5, Bury Walk, Goldington. b Goldington Green. c White with blue V shirts, black knickers.  
 Great Barford. a E. C. Pursehouse, School House, Great Barford. b Fishers Close or Church End Ground. c Red and white shirts, white knickers.  
 Harrold United. a E. D. Pakes, "Lynford," Wood Road, Harrold, Bedford. b "Conergeres." c White shirts, black knickers.  
 Haynes. a E. J. Hudson, 68, Silver End Road, Haynes. b North Lane. c Black and white striped shirts.  
 Husborne Crawley. a T. W. Barnes, 89, Church Street, Ridgmont. b In village. c Scarlet and amber halves reversed.  
 Ickwell. a G. Reeks, Ickwell, Nr. Biggleswade. b Northill. c White shirts, black knickers.  
 Kempston Green End United. a L. Jeffrey, 7, Green End, Kempston, Bedford. b Green End. c Green shirts with white collars, black knickers.  
 Kempston Rovers. a A. J. Fielder, Post Office, Kempston. b Hill Ground. c Red and white striped shirts, blue knickers.  
 Keysoe. a J. G. Watson, Post Office, Keysoe, Bedford. b Keysoe Row. c White shirts, blue knickers.  
 Langford. a H. S. Dilley, 48, Station Road, Langford. b Vicarage End Ground. c Red shirts, white knickers.  
 Leagrave & District. a C. T. Izzard, 273, Marsh Road, Leagrave. b Marsh Farm. c Blue and white hooped shirts, black knickers with white stripes.  
 Leighton Marley Tiles. a L. R. Taylor, Marley Tiles, Stanbridge Road, Leighton Buzzard. b Stanbridge Road. c Green and yellow squares, black knickers.  
 Leighton United. a E. Brinklow, 3, Leighton Road, Leighton Buzzard. b Wayside Sports Ground. c Royal blue shirts with white collars and cuffs, white knickers.  
 Lidlington United. a A. Hurst, 73, Church Street, Lidlington. b Thrupp End Farm. c Red shirts, white knickers.

## "Furnish at Merchants"

*Cash or Deferred Terms*

All goods are marked  
 in plain figures at  
**COMPETITIVE CASH PRICES**  
 and those prices are the  
 basis of our **DEFERRED**  
**TERMS** which can be  
 arranged to suit individual  
 requirements. ★ ★ ★

## F. MERCHANT & SONS,

COMPLETE HOUSE FURNISHERS  
 AND REMOVAL CONTRACTORS.

8 & 10, Manchester Street,  
**LUTON.**

PHONE 252

EST. 1855



**Linslade Sports.** a J. T. Redding, 42, Grovebury Road, Leighton Buzzard. b Wayside Sports Ground. c Black and white quarters, black knickers.

**Luton Adamant Athletic.** a H. Day, c/o Adamant Engineering Co., Luton. b Stockwood (Farley Hill). c Royal blue shirts, with white collars and cuffs, white knickers

**Luton Albion.** a W. Rogers, 33, Corncastle Road, Luton. b Pope's Meadow. c Claret and sky blue shirts, white knickers.

**Luton Amateur.** a R. K. Brown, 248, Dunstable Road, Luton. b Waterlow's, Dunstable. c Red and white shirts, blue knickers.

**Luton Athletic.** a R. F. Day, 11, Dunstable Road West, Luton. b Davis Sports Ground. c Chocolate and gold halves, black knickers.

**Luton Battalion Boy's Brigade.** a K. W. Stanford, 61, Cambridge Street, Luton. b No. 6 Bell's Close. c Navy and white quarters, white knickers.

**Luton Boys' Club.** a R. R. Cox, 49, St. Paul's Road, Luton. b Farley Hill and Stockwood Park. c Blue and white quarters, black knickers.

**Luton Borough Police A.C.** a John H. Wood. c Black and red shirts, white knickers.

**Luton Bromlea United.** a D. J. Aldridge, 19, Maryport Road, Luton. b No. 2 Stockwood Park. c Royal blue shirts, trimmed white, white knickers.

**Luton Brown & Green's.** a A. H. Scott, c/o Brown & Green, Ltd., Luton. b No. 3 Pope's Meadow. c Green shirts with brown collars and cuffs, black knickers.

**Luton Chapel Street Methodist Athletic.** a S. W. Ludlow, 33, Hastings Street, Luton. b No. 6 Bell's Close. c White shirts with black collars and cuffs, black knickers.

**Luton Chapel Street Sports.** a A. J. Smith, 12, Dunstable Road, Luton. b Co-operative Private Ground, Stockingstone Road. c Black shirts with amber facings, black knickers.

**Luton Chaul End Clarence.** a J. H. Cooper, 14, Warren Road, Luton. b Parrish's Field. c Red and green striped shirts, black knickers.

**Luton Christ Church Institute.** a T. C. Potts, 24, Napier Road, Luton. b Chaul End Lane. c Black and white halves, black knickers.

**Luton Clarence.** a P. Emerton, 48, Durham Road, Luton. b No. 3 Pope's Meadow. c Black and white hooped shirts, black knickers.

**Luton Commer Cars.** a S. F. Gray, 169, Gardenia Avenue, Luton. Green shirts with white collars and cuffs, black knickers.

# Charnley

and Sons

*Qualified Opticians*

**NATIONAL HEALTH  
INSURANCE**



**ON THE H.S.A.  
OFFICIAL LIST  
OF OPTICIANS**



*Oculists' Prescriptions Dispensed*

**11 Wellington Street, Luton**

*Phone 1808*



**Luton Cundall Athletic & Sports Club.** a S. C. Jay, c/o Cundall Folding Machine Co., Ltd., Luton. b Ashcroft Road, Stopsley. c Emerald green shirts with black collars and cuffs, white knickers.

**Luton Davis Athletic.** a R. H. Sharp, 272, Biscot Road, Luton. b Sports Ground, Dallow Road. c Red and black quarters, black knickers.

**Luton Gasworks Athletic Club.** a F. Coote, c/o Luton Gasworks, Dunstable Road, Luton. b Dallow Road. c Navy and amber quartered shirts, black knickers.

**Luton Mount Tabor Juniors.** a A. Harp, 2, Farley Avenue, Luton. c Red and black striped shirts, navy blue knickers.

**Luton Nalgo.** a S. W. Townrow, 15, Gordon Street, Luton. b Cundall's, Ashcroft Road. c Black shirts with red and light blue stripes, black knickers.

**Luton Spartan.** a E. Strapp, 11, Stratford Road, Luton. b Stockwood Park. c Black and white quarters, black knickers.

**Luton Stardale.** a R. Barrett, 3, Holland Road, Luton. b Blundell Road Recreation Ground. c Blue shirts with white collars, white knickers.

**Luton St. Mary's.** a R. Kightley, 117, Park Street, Luton. b Gas Works, Dallow Road. c White shirts, black knickers.

**Luton Strawhatters.** a R. W. Olney, 133, Stockingstone Road, Luton. b No. 1 Pope's Meadow. c White shirts, black knickers.

**Luton Sundale.** a R. Readhead, 34, Lyndhurst Road, Luton. b Stockwood Park. c White shirts with black facings, black knickers.

**Luton Town.** a A. E. Wickson, 84, Kenilworth Road, Luton. b 84, Kenilworth Road. c White shirts with black collars and cuffs, black knickers with white seams.

**Luton Wanderers.** a A. Owen, 39, Wickstead Avenue, Leagrave. b No. 4 Pope's Meadow. c Red and white striped shirts, black knickers.

**Luton Wednesday.** a H. Coleman, 45, Burr Street, Luton. b Gasworks Ground, Dallow Road. c Black and white quarters, black knickers.

**Luton Wednesday Ridgway.** a W. Hinds, 58, Richmond Hill. b Pope's Meadow. c Red and white quarters, white knickers.

**Luton White Star Rovers.** a F. Hawkins, 28, Liverpool Road, Luton. b Warden Hill Road. c Red shirts with white facings, black knickers.

**Marston Rovers.** a R. T. Allen, 150, Bedford Road, Marston Moreteyne, Bedford. b Bell Field. c Red and white quarters, also green with white facings, white knickers.

# W. BELL & SON

LTD.,

Gentlemen's Tailors



BORN

1889

STILL

GOING

STRONG

22 Chapel St LUTON



Marston Shelton United. a G. E. Gillett, 174, Lower Shelton Road, Marston Moreteyne. b Upper Shelton. c sky blue and claret quarters.

Meppershall. a K. Stapleton, 23, Fildyke Road, Meppershall. b Church Meadows. c Red and green shirts, white knickers.

Royal Air Force (Henlow). a F/Sgt. J. S. Lancaster, R.A.F., Henlow. b Henlow Camp. c Red and blue quarters., blue knickers.

Sandy Albions. a S. Daniels, 105, St. Neots Road, Sandy. b Recreation Ground, Bedford Road. c Black and white shirts, black knickers.

Shefford Athletic. a B. Tysome, 43, High Street, Shefford. b Hardwicke. c Claret and sky blue striped shirts, blue knickers.

Shefford Hardwicke. a K. A. Dear, 1, High Street, Shefford. b The "Hardwicke." c Royal blue and orange quarters, black knickers.

Shillington Athletic. a D. Twydell, 23, Church Street, Shillington. b High Road. c Blue and white shirts, white knickers.

Shillington Rangers. a P. Payne, 115, Bury Road, Shillington. b Woodside. c Red shirts with white V, white knickers.

Shortstown. a P. Bowler, 23, Greycote, Shortstown. b R.A.W. Sports Field. c Navy blue shirts with white V, navy blue knickers.

Skefko (Luton). a H. Mitchell, Skefko Works, Luton. b Farley Farm. c Maroon and sky blue shirts, white knickers.

St. Andrew's, Woodside (Robin Hoods). a C. A. Rolt, "Glengarth," Front Street, Slip End, Nr. Luton. b Stockwood Park. c Green and white quarters, blue knickers.

Stevington. a H. Warwick, Church Road, Stevington. b Mill Field. c Blue and amber quarters, black knickers.

Stewartby Works. a E. H. Abraham, 56, Stewartby, Nr. Bedford. b Recreation Ground. c Red shirts, black knickers.

Stondon Athletic. a H. J. Downing, 101, Station Road, Lower Stondon, Nr. Shefford. b Upper Stondon. c Black and amber shirts, white knickers.

Three Counties Hospital. a Rev. R. B. Seccombe, The Chaplaincy, Arlesey. b Adjoining Hospital. c Green and white quarters, white knickers.

Toddington Rovers. a A. C. Crees, Toddington. b Alma Field, Leighton Road. c Black and white striped shirts, white knickers.

(Continued on page 5).



# TOM WHITTAKER

*has joined the*

# NEWS CHRONICLE



Every week Tom Whittaker writes an article on physical fitness and methods of training which anyone connected with the game cannot afford to miss . . . BUY THE

# NEWS CHRONICLE





# THE LEAGUE: DIVISION I

	P.	W.	L.	D.	F.	A.	P.
Sunderland	42	25	11	6	109	74	56
Derby County	42	18	12	12	61	52	48
Huddersfield	42	18	12	12	59	56	48
Stoke City	42	20	15	7	57	57	47
Brentford	42	17	13	12	81	60	46
Arsenal	42	15	17	15	78	48	45
Preston North End	42	18	21	13	67	64	44
Chelsea	42	15	19	13	65	72	43
Manchester City	42	17	19	8	68	60	42
Portsmouth	42	17	22	8	54	67	42
Leeds United	42	15	16	11	66	64	41
Birmingham	42	15	16	11	61	63	41
Bolton Wanderers	42	14	15	13	67	76	41
Middlesbrough	42	15	17	10	84	70	40
Wolverhampton Wandrs.	42	15	17	10	77	76	40
Everton	42	13	16	13	89	89	39
Grimsby Town	42	17	20	5	65	73	39
West Bromwich Albion	42	16	20	6	89	88	38
Liverpool	42	13	17	12	60	64	38
Sheffield Wednesday	42	13	17	12	63	77	38
Aston Villa	42	13	20	9	81	110	35
Blackburn Rovers	42	12	21	9	55	96	33

# THE LEAGUE: DIVISION II

	P.	W.	L.	D.	F.	A.	P.
Manchester United	42	22	8	12	85	43	56
Charlton Athletic	42	22	9	11	85	58	55
Sheffield United	42	20	10	12	79	50	52
West Ham	42	22	12	8	90	68	52
Tottenham	42	18	11	13	91	55	49
Leicester	42	19	13	10	79	57	48
Plymouth	42	20	14	8	71	57	48
Newcastle	42	20	16	6	88	79	46
Fulham	42	15	13	14	76	52	44
Blackpool	42	18	17	7	93	72	43
Norwich	42	17	16	9	72	65	43
Bradford City	42	15	14	13	55	65	43
Swansea	42	15	18	9	67	76	39
Bury	42	13	17	12	66	84	38
Burnley	42	12	17	13	50	59	37
Bradford	42	14	19	9	62	84	37
Southampton	42	14	19	9	47	65	37
Doncaster	42	14	19	9	51	71	37
Notts. Forest	42	12	19	11	69	76	35
Barnsley	42	12	21	9	54	80	33
Port Vale	42	12	22	8	56	106	32
Hull City	42	5	27	10	47	111	20

# MANFIELD-HOTSPUR



Four widths.  
Half-sizes.  
(Relative prices, boys.)

# 18/-

Postage extra.

STRANGE that other good Football Boots have not risen to fame, isn't it? Strange, until you consider how completely MANFIELD-HOTSPUR holds the field . . . got famous before others had a chance . . . and satisfies all expectations to-day.

Everybody wears it, in all good matches all over the world.

**MANFIELD & SONS, LTD.**  
**376, STRAND, LONDON, W.C.2**



# THE LEAGUE: DIVISION III (SOUTH)

	P.	W.	L.	D.	F.	A.	P.
Coventry City .....	42	24	9	9	102	45	57
LUTON TOWN .....	42	22	8	12	81	45	56
Reading .....	42	26	14	2	87	62	54
Queen's Park Rangers .....	42	22	11	9	84	53	53
Watford .....	42	20	13	9	80	54	49
Crystal Palace .....	42	22	15	5	96	74	49
Brighton & Hove .....	42	18	16	8	70	63	44
Boscombe .....	42	16	15	11	60	56	43
Notts County .....	42	15	15	12	60	57	42
Torquay United .....	42	16	17	9	62	62	41
Aldershot .....	42	14	16	12	53	61	40
Millwall .....	42	14	16	12	58	71	40
Bristol City .....	42	15	17	10	48	59	40
Clapton Orient .....	42	16	20	6	55	61	38
Northampton .....	42	15	19	8	62	90	38
Gillingham .....	42	14	19	9	66	77	37
Bristol Rovers .....	42	14	19	9	69	95	37
Southend United .....	42	13	19	10	61	62	36
Swindon Town .....	42	14	20	8	64	73	36
Cardiff City .....	42	13	19	10	60	73	36
Newport County .....	42	11	22	9	60	111	31
Exeter City .....	42	8	23	11	59	93	27

# THE LEAGUE: DIVISION III (NORTH)

	P.	W.	L.	D.	F.	A.	P.
Chesterfield .....	42	26	6	12	92	39	60
Chester .....	42	22	9	11	100	45	55
Tranmere .....	42	92	9	11	93	58	55
Lincoln .....	42	22	11	9	91	51	53
Stockport .....	42	20	14	8	65	49	48
Crewe .....	42	19	14	9	80	76	47
Oldham Athletic .....	42	18	15	9	86	73	45
Hartlepool United .....	42	15	15	12	57	61	42
Accrington Stanley .....	42	17	17	8	63	72	42
Walsall .....	42	16	17	9	79	59	41
Rotherham .....	42	16	17	9	69	66	41
Darlington .....	42	17	19	6	74	79	40
Carlisle .....	42	14	16	12	56	62	40
Gateshead .....	42	13	15	14	56	76	40
Barrow .....	42	13	17	12	58	65	38
York .....	42	13	17	12	62	95	38
Halifax .....	42	15	20	7	57	61	37
Wrexham .....	42	15	20	7	66	75	37
Mansfield .....	42	14	19	9	80	91	37
Rochdale .....	42	10	19	13	58	88	33
Southport .....	42	11	22	9	48	90	31
New Brighton .....	42	9	27	6	43	102	24

# EASTERN NATIONAL

## LUXURY COACHES

AND

## OMNIBUSES

AVAILABLE FOR

# PRIVATE HIRE

Reasonable Quotations : Reliable Service

## A REMINDER

Regular Express Services are operated during the Summer Months from LUTON to BOURNEMOUTH, PORTSMOUTH and SOUTHSEA, MARGATE, YARMOUTH, SOUTHEND and CLACTON, etc. Excursions and Tours to other South and East Coast Resorts. Half-day and Evening Circular Tours.

THE EASTERN NATIONAL OMNIBUS Co., LTD.

LOCAL OFFICES:  
PARK SQUARE, CASTLE ST.,  
AND WILLIAMSON STREET,  
LUTON (PHONE 1260)

HEAD OFFICES:  
NEW WRITTLE STREET,  
CHELMSFORD.  
PHONE 3431 (THREE LINES)

EN. AD. 2327/736



# LONDON COMBINATION

	P.	W.	L.	D.	F.	A.	P.
Portsmouth .....	46	28	9	9	125	66	65
Brentford .....	46	29	11	6	100	57	64
Arsenal .....	46	29	12	5	117	55	63
West Ham United .....	46	24	16	6	121	74	54
Chelsea .....	46	22	15	9	100	81	53
Swansea Town .....	46	21	15	10	77	66	52
Crystal Palace .....	46	21	15	10	102	98	52
LUTON TOWN .....	46	22	18	6	122	109	50
Reading .....	46	22	18	6	96	96	50
Tottenham .....	46	19	17	10	111	93	48
Northampton .....	46	19	17	10	94	80	48
Queen's Park Rangers .....	46	20	18	8	83	73	48
Millwall .....	46	20	19	7	69	80	47
Charlton Athletic .....	46	19	20	7	89	79	45
Coventry City .....	46	18	21	7	85	92	43
Clapton Orient .....	46	14	18	14	66	99	42
Fulham .....	46	15	21	10	80	84	20
Leicester City .....	46	17	23	6	79	98	40
Bournemouth .....	46	15	21	10	70	97	40
Watford .....	46	16	25	5	87	121	37
Southend United .....	46	12	23	11	82	106	35
Southampton .....	46	11	24	11	61	85	33
Brighton .....	46	11	27	8	60	119	30
Bristol City .....	46	10	31	5	65	140	25

# SOUTH MIDLANDS LEAGUE (DIVISION I)

	P.	W.	L.	D.	F.	A.	P.
Kettering Town .....	30	24	4	2	123	50	50
Vauxhall Motors .....	30	21	6	3	111	50	45
St. Neots & District .....	30	20	5	5	98	51	45
Stewartby Works .....	30	16	9	5	84	63	37
Waterlow's .....	30	15	10	5	107	72	35
Rushden Town .....	29	16	10	3	94	71	35
Wolverton Town .....	30	16	12	2	82	63	34
Hitchin Town .....	30	12	9	9	64	73	33
Bedford Town .....	30	14	12	4	78	75	32
Cambridge Town .....	30	12	15	3	73	81	27
Eynesbury Rovers .....	30	11	15	4	71	64	26
Kempston Rovers .....	30	9	17	4	65	81	22
Shredded Wheat .....	30	9	21	0	55	101	18
Dunstable Athletic .....	30	5	19	6	46	98	16
Baldock Town .....	30	6	23	1	45	130	13
Luton Davis Athletic .....	29	3	22	4	32	105	10



'Still keeps going  
when the rest have stopped'

# Exide


THE LONG LIFE BATTERY  
FOR CARS AND WIRELESS

**SHOOLBRED**  
ELECTRICAL CO. LTD.

1 LANGLEY STREET  
LUTON SERVICE STATION




Luton's Largest, Oldest,  
and still the Best




# Central Cafe

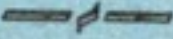
20 — 22 — 24  
CHEAPSIDE



Seating Accommodation - - 250



CATERING  
IN ALL ITS BRANCHES



ESTABLISHED 70 YEARS. 'Phone 172