

1937 The Luton News 1938

FOOTBALL HANDBOOK

2^D

HOME or AWAY!



**STYLE & VALUE
ALWAYS WIN**

STYLE

represents the most up-to-date masculine wear, cut and comfort

VALUE

stands for solid, reliable goodness backed by Foster Bros.' 60 year old reputation

FOSTER
BROTHERS CLOTHING COMPANY LTD.
(145 BRANCHES)

29Z-354520
22 & 24 GEORGE ST., LUTON
5, HIGH STREET SOUTH, DUNSTABLE

S. A. LEWIS

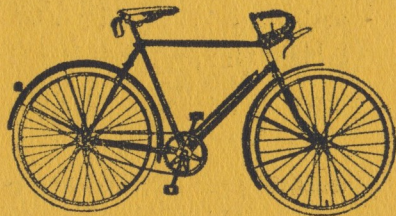
for
Cycles and Repairs
Toys, etc.

EASY
TERMS

FROM **2/-**

WEEKLY

FREE SERVICE AFTER SALES



WALK IN — — RIDE AWAY

138 DUNSTABLE ROAD
and 1a WALDECK ROAD **LUTON**

Phone 807

LUTON TOWN FOOTBALL & ATHLETIC CLUB

LIMITED

President: Mr. Harry Arnold, C.A., J.P.



The Chairman.

Directors:

Chairman: Councillor Chas. Jeyes.
Messrs. E. Hugh Woods (Vice-Chairman), F. J. Andrews,
Stanley H. Godfrey, C.A., Horace S. Hewson, Percy G.
Mitchell, C.C., Philip Wright, Henry Richardson, C.C.

Manager: Mr. E. Liddell.

Secretary: Mr. A. E. Wickson.

Hon. Medical Officer: E. J. Crarer, M.B., Ch.B.
Colours: Shirts—White Shirts with white straw hat
badge on a black background.

Knickers—Black Knickers.

Hose—Black and White hooped stockings.

Ground: Kenilworth Road (off Dunstable Road), Luton.
Registered Office: 70 and 72, Kenilworth Road, Luton.

Complete Football Reports in the Evening Telegraph

Bet with Luton's leading
BOOKMAKER

WALTER H. LANCASTER

56 Cambridge Street.

LUTON

AND

"KLONDYKE," HARPENDEN

Whose Slogan is

STRICT PRIVACY :: PROMPT PAYMENT

Commissions accepted for all meetings under
Jockey Club, N.H. or Pony Turf Club Rules.
Dog Racing under N.G.R.C. Rules. Also at
Luton Stadium.

Fixed Odds Football Coupons on application.

PHONE :—

LUTON
2340 2341
2342 2343
2344 2345
1832 1350

GRAMS :—

REQUIRE
LUTON

REQUIRE
HARPENDEN

PHONE :—

HARPENDEN

1080
1081

CREDIT ACCOUNTS OPENED ON APPROVED
REFERENCES.

CAN IT BE DONE?

TWELVE months ago we were still bemoaning the hard blow of Fate which had deprived Luton Town of the promotion they had worked so hard to achieve.

To-day we are still rejoicing that the reward of merit was deferred for only one year, and we are gleefully anticipating a strong bid for higher honours still.

A year ago we expressed the opinion that the Board of Directors comprised men of such mettle that they would not allow the setback to deter them; that their efforts would again be concentrated on promotion.

Events have fulfilled that opinion, and our first thanks should be to those men who have made it possible by the spirit of enterprise and the progressive policy they have adopted.

Having thus earned our praise, we shall feel even more confident than ever that they will not relax their effort, but will now play for the higher stakes of First Division football in Luton.

That, indeed, would be a record for Luton, and if it were attained at the first time of

THE FINEST FOOTBALL

is played with

MOSEAM BLADDERS

Moseley "Moseam" football bladders—first in the field for reliability and durability—hold an unbeatable record in every country.

Made from the finest rubber with seams and necks most carefully fitted, every "Moseam"

bladder is given a 24 hours inflation test before leaving the factory.

Moseley's are the largest manufacturers of football bladders in the world, and their reputation for good rubber goes back for over a century.

DAVID MOSELEY
& SONS Ltd.

Ardwick, Manchester 12

Branches:—

LONDON. BIRMINGHAM.
GLASGOW SYDNEY (N.S.W.)



asking would equal the feat of Charlton Athletic, a Club with much greater opportunity.

Can it be done?

The course will be hard, more difficult than ever, for it is hard to remember a time when there were so many famous clubs in the Second Division. As years go by the weight of support tells its tale, and the struggle for championships becomes fiercer, but we can be quite certain that Luton Town directors will not be content with their first honours; they will work as stoutly as ever until they can be counted with the first twenty-two clubs in English football.

During the year there has been one addition to the Board of Directors, Mr. Harry Richardson having accepted the position, and the Board will have strengthened its hand by the acquisition.

The introduction to the last handbook wound up with the assertion that the record of the Directors was sufficient guarantee for the approaching season.

We cannot do better than repeat that assurance, and again look forward to making new records, and the bold attempt to win through to the First Division.

The Evening Telegraph—Luton's Own Local Evening

FOR

VAUXHALL Cars

SEE

PLOWMANS

LTD.

HITCHIN ROAD, LUTON

WE

STOCK

SELL

SERVICE

AND

RACE

VAUXHALL Cars

PHONE LUTON 2226/7 (Two Lines)

TOWN CHAIRMAN'S MESSAGE

IF I say that I am a very proud man to-day I hope the reader will not misunderstand.

It is not from any intention to "blow my own trumpet": rather do I wish to say that I am proud to be the Chairman of a Club that has pulled through successfully after so many years of striving; proud of my colleagues on the Board of Directors; of the team that merited the goodwill of rivals and friends; and proud of the supporters who rallied to the request we made and thereby helped us to overcome that first difficult promotion step.

I firmly believe that to gain promotion to the First Division will not be any more difficult than to reach the second. My reasons are that the quality of the Third Division (Southern Section) football is virtually as high as that of the Second Division; we found as much difficulty in overcoming old opponents as we did in meeting clubs of higher grade.

The part of the supporters is as important as that of the players. When the Directors said that they would find the players and trust to win support by giving first-class football, the support was forthcoming. We have now gone a step further: we have had to spend a very large sum on equipment as well as on players to meet our new obligations.

Can we trust to receive as staunch and loyal support in the future—win or lose? I believe we can, and therefore I trust to see an average crowd exceeding twenty thousand for our League games, and about half that number at least for the Combination games.

If we can rely on that you may take it from me that the Board of Directors will do their utmost to bring First Division football to Luton—and we hope it will be twelve months hence.

CHAS. JEYES.

“The Best Players”

ALL KNOW THAT

ARTHUR DAY'S PIANOS

ARE THE
BEST

Arthur Day & Sons Ltd.
Connaught House, Upper George St.

Phone

LUTON

481.

Comparison of League Records

THE LEAGUE DIVISION III (SOUTH)

1924-25

Position in Table—17.

	P.	W.	L.	D.	F.	A.	P.
H	..21	9	2	10	34	15	28
A	..21	1	13	7	15	42	9
	42	10	15	17	49	57	37

1925-26

Position in Table—7.

	P.	W.	L.	D.	F.	A.	P.
H	..21	16	1	4	60	25	36
A	..21	2	16	3	20	50	7
	42	18	17	7	80	75	43

1926-27

Position in Table—8.

	P.	W.	L.	D.	F.	A.	P.
H	..21	12	0	9	48	19	33
A	..21	3	13	5	20	47	11
	42	15	13	14	68	66	44

1927-28

Position in Table—13.

	P.	W.	L.	D.	F.	A.	P.
H	..21	13	3	5	56	27	31
A	..21	3	16	2	38	60	8
	42	16	19	7	94	87	39

1928-29

Position in Table—7.

	P.	W.	L.	D.	F.	A.	P.
H	..21	16	2	3	64	28	35
A	..21	3	10	8	25	45	14
	42	19	12	11	89	73	49

1929-30

Position in Table—13.

	P.	W.	L.	D.	F.	A.	P.
H	..21	13	4	4	42	25	30
A	..21	1	12	8	22	53	10
	42	14	16	12	64	78	40

1930-31

Position in Table—7.

	P.	W.	L.	D.	F.	A.	P.
H	..21	15	3	3	61	17	33
A	..21	4	12	5	15	34	13
	42	19	15	8	76	51	46

1931-32

Position in Table—6.

	P.	W.	L.	D.	F.	A.	P.
H	..21	16	4	1	62	25	33
A	..21	4	11	6	33	45	14
	42	20	15	7	95	70	47

1932-33

Position in Table—14.

	P.	W.	L.	D.	F.	A.	P.
H	..21	12	1	8	60	32	32
A	..21	1	15	5	18	46	7
	42	13	16	13	78	78	39

1933-34

Position in Table—6.

	P.	W.	L.	D.	F.	A.	P.
H	..21	14	4	3	55	28	31
A	..21	7	7	7	28	33	21
	42	21	11	10	83	61	52

1934-35

Position in Table—4.

	P.	W.	L.	D.	F.	A.	P.
H	..21	12	2	7	60	23	31
A	..21	7	9	5	32	37	19
	42	19	11	12	92	60	50

1935-36

Position in Table—2.

	P.	W.	L.	D.	F.	A.	P.
H	..21	13	2	6	56	20	32
A	..21	9	6	6	25	25	24
	42	22	8	12	81	45	56

1936-37

Position in Table—1.

	P.	W.	L.	D.	F.	A.	P.
H	..21	19	1	1	69	16	39
A	..21	8	10	3	34	37	19
	42	27	11	4	103	53	58

For all Sports News, buy the Evening Telegraph

LACEYS

'The House that Value Built'

GUARDS and 232 Sportswear has been specially designed for men who insist that their leisure clothes shall be tailored with style as well as built for comfort.

GUARDS

TROUSERS

21/-

(to measure 25/-)

JACKETS

From 30/-

(to measure 5/6 extra)

.232.

FLANNELS - 13/9

LIGHTWEIGHTS 16/6

SANDOM

SPORTS COATS 21/- 25/-

14 WELLINGTON STREET

and

42a HIGH TOWN ROAD, LUTON

Comparison of League Records

LONDON COMBINATION

*1924-25

Position in Table—12.

	P.	W.	L.	D.	F.	A.	P.
	32	15	15	2	48	62	32

*1925-26

Position in Table—14.

	P.	W.	L.	D.	F.	A.	P.
H	..17	11	5	1	52	27	23
A	..17	0	15	2	18	51	2
	34	11	20	3	70	78	28

1926-27

Position in Table—16.

	P.	W.	L.	D.	F.	A.	P.
H	..21	12	2	7	70	28	31
A	..21	3	17	1	20	67	7
	42	15	19	8	90	95	38

1927-28

Position in Table—15.

	P.	W.	L.	D.	F.	A.	P.
H	..21	13	6	2	57	29	28
A	..21	3	15	2	30	66	8
	42	16	21	4	87	95	36

1928-29

Position in Table—19.

	P.	W.	L.	D.	F.	A.	P.
H	..21	13	5	3	48	25	29
A	..21	3	18	1	21	72	5
	42	15	23	4	69	97	34

1929-30

Position in Table—22.

(Last).

	P.	W.	L.	D.	F.	A.	P.
H	..21	9	7	5	42	30	23
A	..21	2	18	1	25	70	5
	42	11	25	6	67	100	28

1930-31

Position in Table—11.

	P.	W.	L.	D.	F.	A.	P.
H	..21	14	3	4	55	23	32
A	..21	3	14	4	22	55	10
	42	17	17	8	77	78	42

1931-32

Position in Table—12.

	P.	W.	L.	D.	F.	A.	P.
H	..21	16	2	3	66	26	35
A	..21	3	18	0	28	71	6
	42	19	20	3	94	97	41

1932-33

Position in Table—19.

	P.	W.	L.	D.	F.	A.	P.
H	..23	12	6	5	64	27	29
A	..23	2	17	4	21	56	8
	46	14	23	9	85	83	37

1933-34

Position in Table—19.

	P.	W.	L.	D.	F.	A.	P.
H	..23	13	8	2	50	35	28
A	..23	5	12	6	20	56	16
	46	18	20	8	70	91	44

1934-35

Position in Table—15.

	P.	W.	L.	D.	F.	A.	P.
H	..23	14	7	2	60	31	30
A	..23	4	15	4	24	57	12
	46	18	22	6	84	88	42

1935-36

Position in Table—8.

	P.	W.	L.	D.	F.	A.	P.
H	..23	15	3	5	83	35	35
A	..23	7	15	1	39	74	15
	46	22	18	6	122	109	50

1936-37

Position in Table—19.

	P.	W.	L.	D.	F.	A.	P.
H	..23	12	7	4	58	39	28
A	..23	2	16	5	22	71	9
	46	14	23	9	80	110	37

*Note: Seasons 1924-25 and 1925-26 were Southern League.

Solid Silver Challenge
Cups.

Electro-plated Cups.

Medals : Trophies of
all descriptions at Com-
petitive Prices.

JAMES WALKER
48 GEORGE STREET, LUTON
GOLDSMITH AND SILVERSMITH LTD.
PHONE: LUTON 1265

Official Medallist and Sports
Prize Suppliers to the Lon-
don Transport Sports Asso-
ciation.

Special Terms to Bona Fide
Sports Clubs. Catalogues on
application.

Comparisons in the F.A. Cup

1924-25	Jan. 10—1st Round:	West Bromwich A...	A 0—4
1925-26	Nov. 28—1st Round:	Folkestone	H 3—0
	Dec. 12—2nd Round:	Aberdare	A 4—2
1926-27	Nov. 27—1st Round:	London Caledonians	H 4—2
	Dec. 11—2nd Round:	Northfleet	H 6—2
	Jan. 8—3rd Round:	Chelsea	A 0—4
1927-28	Nov. 26—1st Round:	Clapton	H 5—0
	Nov. 30—1st Round:	Clapton*	H 9—0
	Dec. 10—2nd Round:	Norwich	H 6—0
	Jan. 14—3rd Round:	Bolton	A 1—2
1928-29	Nov. 24—1st Round:	Southend	H 5—1
	Dec. 8—2nd Round:	Fulham	A 0—0
	Dec. 13—2nd Round:	Fulham*	H 4—1
	Jan. 12—3rd Round:	Crystal Palace	H 0—0
	Jan. 16—3rd Round:	Crystal Palace* ..	A 0—7
1929-30	Nov. 30—1st Round:	Queen's Park Rgrs.	H 2—3
1930-31	Nov. 29—1st Round:	Clapton Orient ..	H 2—2
	Dec. 4—1st Round:	Clapton Orient* ...	A 4—2
	Dec. 13—2nd Round:	Watford	A 1—3
1931-32	Nov. 28—1st Round:	Swindon	A 5—0
	Dec. 12—2nd Round:	Lincoln	A 2—2
	Dec. 16—2nd Round:	Lincoln*	H 4—1
	Jan. 9—3rd Round:	Wolves	H 1—2
1932-33	Nov. 26—1st Round:	Kingstonians	H 2—2
	Nov. 30—1st Round:	Kingstonians*	A 3—2
	Dec. 10—2nd Round:	Stockport County..	A 3—2
	Jan. 14—3rd Round:	Barnsley	A 0—0
	Jan. 18—3rd Round:	Barnsley*	H 2—0
	Jan. 28—4th Round:	Tottenham H'spurs	H 2—0
	Feb. 18—5th Round:	Halifax Town	A 2—0
	Mar. 4—6th Round:	Everton	A 0—6
1933-34	Jan. 13—3rd Round:	Arsenal	H 0—1
1934-35	Jan. 12—3rd Round:	Chelsea	A 0—0
	Jan. 16—3rd Round:	Chelsea*	H 2—0
	Jan. 26—4th Round:	Burnley	A 1—3
1935-36	Jan. 11—3rd Round:	West Ham	A 2—2
	Jan. 15—3rd Round:	West Ham*	H 4—0
	Jan. 25—4th Round:	Manchester City ..	A 1—2
1936-37	Jan. 16—3rd Round:	Blackpool	H 3—3
	Jan. 20—3rd Round:	Blackpool*	A 2—1
	Jan. 30—4th Round:	Sunderland	H 2—2
	Feb. 3—4th Round:	Sunderland*	A 1—3

* Replay.

EASTERN NATIONAL

LUXURY COACHES
AND
OMNIBUSES

AVAILABLE FOR

PRIVATE HIRE

Reasonable Quotations : Reliable Service

A REMINDER

Regular Express Services are operated during the Summer Months from LUTON to BOURNEMOUTH, PORTSMOUTH and SOUTHSEA, MARGATE, YARMOUTH, SOUTHEND, CLACTON and DOVERCOURT. Excursions and Tours to other South and East Coast Resorts. Half-day and Evening Circular Tours.

THE EASTERN NATIONAL OMNIBUS Co., LTD.

LOCAL OFFICES:
PARK SQUARE, CASTLE ST.,
AND WILLIAMSON STREET,
LUTON (PHONE 1260)

HEAD OFFICES:
NEW WRITTLE STREET,
CHELMSFORD.
PHONE 3431 (THREE LINES)

EN. AD. 3176/837.

PLAYERS' APPEARANCES

THE FOOTBALL LEAGUE (Division III, Southern).

Roberts	42	Dawes	21	Lutterloch	2
Smith	42	Hancock	18	Mills	2
Fellowes	41	Hodge	16	Parris	2
Nelson	41	Ball	15	Sloan	2
Finlayson	40	Coen	12	Stevens	2
Payne	39	King	11	Crompton	1
Stephenson	37	Rich	10	Godfrey	1
Dolman	30	Martin	3	M'Ginnigle	1
Mackey	29	Hubbard	2		

LONDON COMBINATION

Kidd	36	Martin	17	Patrick	5
M'Ginnigle	35	Ball	16	W. Wildman	4
Booton	34	Stevens	16	R. Murphy	3
Coen	33	Childs	13	Boyd	2
Sloan	32	Gooney	12	King	2
Lutterloch	31	Hogg	12	M'Gowan	2
Rich	27	Beresford	11	A. Cawdell	1
Godfrey	21	Crompton	9	G. Crawford	1
Hodge	21	Cox	7	Mackey	1
Hubbard	21	Dolman	7	J. Singlewood	1
Kingham	20	Hancock	7	A. Tarbox	1
Mills	18	Parris	6		
Hosier	17	Hall	5		

F.A. CUP.—Dolman, Mackey, Smith, Fellowes, Finlayson, Nelson, Payne, Roberts, Stephenson, 4; Sloan, 3; Hodge, 2; Hancock, Martin, Rich, 1.

SOUTHERN SECTION CUP.—Fellowes, Ball, Beresford, Hodge, 3; Coen, Booton, Finlayson, Nelson, Lutterloch, Roberts, Stevens, 2; Dolman, Hubbard, Kingham, Mackey, Smith, Rich, Stephenson, 1.

BEDS PREMIER CUP.—W. Wildman; Kingham, A. Holt; Godfrey, Hall, E. Frith; M'Gowan, Martin, Hosier, Hogg, Stevens.

FRIENDLY MATCHES.—Finlayson, 3; Dolman, Smith, Hodge, Hogg, Hancock, Fellowes, 2; Gooney, M'Ginnigle, Mackey, Nelson, Beresford, Rich, Roberts, Stephenson, Payne, Kingham, Lutterloch, Boyd, Crompton, Martin, Patrick, R. Murphy, H. L. Stearn, C. Allen, 1.

Football Forecasts every week in the Evening Telegraph



*The BEST team
of sports writers
includes . . .*

CHARLES BUCHAN

(ex-England and Arsenal)

"PANGLOSS"

(leading Authority on the Amateur game)

"ATHENIAN"

(S. Fearne)

Read them only in the

**News
Chronicle**

GOAL SCORERS

LEAGUE.—Payne 55, Stephenson 17, Ball, Dawes, Roberts 8, Finlayson, Rich 2, Fellowes, Hancock, Hodge 1 each; Total 103.

LONDON COMBINATION.—Ball 13, Rich 10, Hancock, Hodge, Sloan 6, Martin 5, Stevens 4, Beresford, Lutterloch, Hogg, Hosier, Patrick 3, Booton, Cox, Mills 2, Crawford, Crompton, Hall, Murphy, Mackey, Parris, Singlewood 1 each; opponents (own goal) 2; Total 80.

FRIENDLY MATCHES.—Payne 5, R. Murphy 2, Hancock, Hogg, Patrick 1 each; Total 10.

F.A. CUP-TIES.—Payne, Roberts 3, Sloan, Stephenson 1 each; Total 8.

OTHER CUP-TIES.—Beresford, Stevens 2, Hodge, Roberts, Stephenson, Hosier; Total 8.

LONDON MIDWEEK LEAGUE

Thurs. Oct. 28—	Peterborough	A
Wed. Nov. 3—	Guildford	A
Mon. " 15—	West Ham	A
Wed. " 24—	Crystal Palace	H
1938			
Thurs. Jan. 13—	Fulham	A
Wed. Feb. 2—	Folkestone	H
Wed. " 9—	Folkestone	A
Wed. " 16—	Southend	H
Wed. " 23—	Guildford	H
Wed. Mar. 2—	Fulham	H
Wed. " 9—	Crystal Palace	A
Wed. " 23—	Peterborough	H
Wed. Apr. 20—	West Ham	H
Wed. " 27—	Southend	A

AMATEUR PLAYERS

Here are the amateur players who have signed for Luton Town for this season.

Goal: E. J. Stringer, Casuals and Corinthians; Wilfred Wildman, Luton Sundale.

Backs: Rex A. Smith, Biggleswade and District; F. C. Holt, Luton Sundale.

Half-Backs: J. T. Evans, Wellington; E. D. Crooks, Mansfield; F. C. Luff and E. W. Frith, Luton Sundale.

Forwards: R. W. Christopher, St. Albans City; J. H. Hodgetts, Mansfield; Brian F. Williams, Welsh Schoolboy International; R. H. Lane, F. Beecroft, F. J. Bone, and R. F. Allen, Luton Sundale; Tom Parnaby.

Calling all Sportsmen!

E. J. SWAIN

23 REGINALD STREET

== LUTON ==

Telephone 2134-5. 'Grams: Nap, Luton

Commissions Accepted for the following:

**RACING UNDER JOCKEY CLUB N.H.
and P.T.C. RULES.**

**FOOTBALL COUPONS (Five Leagues)
ON APPLICATIONS.**

**GREYHOUND RACING. ALL LON-
DON TRACKS and LUTON STADIUM.
(Forecast Pools at all London Tracks).**

★ *Write to-day and open an account, on approved references*

AGENTS WANTED

Crack Shots of the League

DIVISION I.

Steele (Stoke C.)	33	Gurney (Sunderland) . .	21
McCulloch (Brentford) . .	31	Drake (Arsenal)	20
Glover (Grimsby)	30	Stevenson (Everton) . .	20
*Astley (Derby C.)	30	Brook (Manchester C.) .	20
Doherty (M'chester C.) . .	29	Lewis (Grimsby)	18
Dean (Everton)	24	Camsell (Middlesbro') .	18
Clayton (Wolves)	24	Kirchen (Arsenal)	18
Carter (Sunderland) . . .	23	F. O'Donnel (Preston) .	17
Fenton (Middlesbro') . . .	22	Jones, H. (West Brom.) .	17
Mills (Chelsea)	22		

* Five for Aston Villa.

DIVISION II.

*Bowers (Leicester C.) . .	45	Dodds (Sheffield Utd.) .	23
Broome (Aston Villa) . . .	29	Rooke (Fulham)	19
Morrison ('Spurs)	29	Matthews (Bury)	18
Martin (Notts. Forest) . .	28	McPhee (Bradford) . . .	17
Finan (Blackpool)	28	Graham (Bury)	17
Ponting (Chesterfield) . .	28	Connor (Plymouth) . . .	17
Smith (Newcastle)	24	Manders (Norwich) . . .	17

* 12 for Derby County.

DIVISION III (Southern Section)

Payne (Luton)	55	Morton (Torquay)	21
*Allen (Northampton) . .	34	Watson (Gillingham) . .	19
Williams (Exeter)	29	Barnett (Watford)	19
Cookson (Swindon)	25	Burditt (Millwall)	17
Gallacher (Notts. C.) . . .	25	Rawlings (North'pton) .	17
Riley (Boscombe)	25	Stephenson (Luton) . . .	17
Stevens (Brighton)	24	Haycox (Bristol C.) . . .	17

* 7 for Reading

DIVISION III (Northern Section)

Harston (Mansfield) . . .	55	Thompson (York)	24
Campbell (Lincoln)	36	Ouchterlonie (Barrow) . .	22
Davis (Oldham)	32	Smith (Rotherham)	22
Wrightson (Chester)	32	Waring (Crewe)	21
Mortimer (Accrington) . .	32	Lapham (Wrexham) . . .	21
Patrick (Southport)	29	Pedwell (Rotherham) . . .	20
Brallisford (Darl'gton) . .	25	Hill (Stockport)	19
Valentine (Halifax)	25	Burgon (Wrexham)	18
Hunt (Rochdale)	24	English (Hartlepoons) . .	18

Complete Football Reports in the Evening Telegraph

ALLSPORTS

Sports Specialists

Personal Service :: Satisfaction Guaranteed

SPECIAL TERMS TO CLUBS

FOOTBALL

requisites stocked in various qualities . .

JERSEYS,
KNICKERS,
SHINGUARDS,
GOAL NETS, etc.

BADMINTON,
HOCKEY,
BOXING, GOLF,
BILLIARDS
TABLE TENNIS
and all Winter Sports

TOYS and GAMES



★ ADVANTAGE SHOULD BE TAKEN OF OUR EXPERIENCE AND CONNECTION WITH THE SPORTS TRADE OF OVER 35 YEARS' STANDING ★

Write or telephone for our Representative to call with Samples and Catalogues.

74 DUNSTABLE ROAD, LUTON

Tel. No.: Luton 2895

Individual Scoring Records

Division	ENGLAND	Goals
I ..	E. Drake (Arsenal), v. Aston Villa, Dec. 14, 1935, at Birmingham	7
I ..	J. Ross (Preston North End), v. Stoke, Oct. 6, 1888, at Preston	7
II ..	J. Duncan (Leicester City), v. Port Vale, Dec. 25, 1924	6
II ..	J. Cookson (West Brom. Albion), v. Blackpool, Sept. 17, 1927	6
III (S)	J. Payne (Luton Town), v. Bristol Rovers, April 13, 1936, at Luton, on his first appearance at centre-forward for the club	10
III (N)	R. Bell (Tranmere Rvrs.), v. Oldham Athletic, Dec. 26, 1935, at Tranmere	9

HIGHEST RECEIPTS

At F.A. Cup Final: £27,776, Bolton Wanderers v. West Ham United, at Wembley, 1923.
At Scottish Cup Final: £12,248, Celtic v. Aberdeen, at Hampden Park, 1937.
At Internationals: £20,395, England v. Scotland, at Wembley, 1936; £24,303, Scotland v. England, at Hampden Park, 1937.

RECORD DOUBLES

F.A. Cup and League Championship: Preston North End, 1889; Aston Villa, 1897.
F.A. Cup and Promotion: West Bromwich Albion, 1931.
Scottish Cup and League Championship: Celtic, 1907-8-14; Rangers, 1928-30-34-35.

GREATEST CROWDS

Most to Pay: 149,547, Scotland v. England, at Hampden Park, Glasgow, 1937.
At F.A. Cup Final: 126,047, Bolton Wanderers v. West Ham United, at Wembley Stadium, 1923. (See Records in Detail).
At Scottish Cup Final: 146,433, Celtic v. Aberdeen, at Hampden Park, 1937.
Record Aggregate: 217,677, at two matches between Rangers and Kilmarnock, in Scottish Cup Final, 1931-2.
In English League: 82,905, Chelsea v. Arsenal, Oct. 12, 1935.

The Evening Telegraph—Luton's Own Local Evening

AFTER AN . . . ENJOYABLE MATCH

Spend an enjoyable
hour or so at the

SUGAR LOAF LEAGRAVE

Where Mr. and Mrs.
J. Randall will give you
a cordial welcome and
where you will find
genial company.



SUGAR LOAF LEAGRAVE



Pull-in
For Cars

Buses stop
at Door

Fully
Licensed

Covered
Accommo-
dation in
Gardens

Joseph L. Coen

(Goalkeeper)

Fourth season. Native
Glasgow; had his first
League chance with
Clydebank; after-
wards with Glasgow
Celtic, Guildford
City, and Bourne-
mouth and Boscombe.
Last season was kept
out of the first team
until just before
Easter. Took his
opportunity when
Dolman was injured;
played big part in the
last dozen matches.
Just failed to qualify
for a medal. Before
turning professional,
was a timekeeper in
a shipyard. A devotee
of golf. 5ft. 10½in.;
12st. 12lb.



H. W. Dolman

(Goalkeeper)

Now has a Northern
and Southern Section
Championship Medal;
former gained with
Chesterfield in whose
promotion team he
was an ever-present.
Came to Luton a year
last March from
Bristol City; made 30
appearances last sea-
son until injury laid
him aside. Could not
regain his place owing
to Coen's brilliance.
Furnaceman before
professional foot-
baller. 5ft. 11½in.
13st. 10lb.



Thos. P. King

(Full-back)

Second season. Signed from Bournemouth. Came into the team when Mackey was injured, and gave sterling exhibitions. Like Coen, unlucky to miss a medal. Born at Woolsthorpe - by - Belvoir, Grantham, his first professional club was Notts Cty. After a spell there, moved to Bournemouth, and cost the Town a substantial fee. Was a gardener. Plays golf. Was married during the summer. 5ft. 8½in. 10st. 11lb.

Thos. S. Mackey

(Full-back)

Fifth season. Now has longest service. Great defender of ruggedness and determination, has stopped many a clever winger. Centre-half when he came to Luton, quickly adapted himself to the full-back position, and has been a first team regular since. Began his professional career with Hartlepool United, followed with three seasons with Sheffield Wednesday. Two-footed and accurate; Born at Cassop, Co. Durham. 5ft. 10½in. 12st. 7lb.



Bert. R.

Lutterloch

(Full-back)

Second season. Born in London. Came to Luton from Aldershot as an inside-right, but did not settle down; was tried successfully, first as a half-back, and then as a full-back. Gives promise of developing into a fine defender. Amateur with Tufnell Park before becoming a professional for Lille. Helped French club to win the championship of France, 1933. Signed for Wolves, but, after two seasons went to Aldershot. 5ft. 10in. 11st. 10lb.



Thos. S. Smith

(Full-back)

Fourth season. Born at Higham, near Burnley; played for them in his early days. Was in the Leeds Training College team, and centre-half for Nelson and Rochdale three seasons. Flank-half when he joined the Town, but was made into a first-class full-back. Schoolteacher in Luton, and plays cricket with his scholastic colleagues in the summer. Also plays lawn tennis, and is a useful swimmer. 5ft. 10in. 12st.





Charles Childs

(Half-Back)

Signed in February last from Cockfield, amateur club. Tried against Chelsea Reserves, and signed on the day the Town met Sunderland in the F.A. Cup replay. Not yet 21; should develop into a first-class half-back. Bricklayer before signing professional forms. Has also played for Darlington Amateurs. Fond of cricket and table tennis. 5ft. 9in. 11st. 4lb.

Gordon Dreyer

(Half Back)

Recruit. Sunderland born; first played for Whitburn St. Mary's and Washington junior sides. Joined Hartlepoons Utd., but left them to play for Hull City. Re-joined Hartlepoons, and last season had a regular place in the League team. Was well recommended, and Mr Liddell fixed him up. Shipwright before signing professional forms. Good at tennis and swimming. 5ft. 10in. 11st. 12lb



John Finlayson

(Right-half)

Third season. Born at Thornliebank Scotland. Played for his native village, and then went to Motherwell as an inside forward. Thence to Cowdenbeath, and on to Clapton Orient, where he became a half-back, and then a full-back. Signed by the Town, and gained his place at right-half. Grand attacking half, whose footwork is a delight. Star golfer of the team. 5ft. 11in. 12st.



NORMAN McKAY (Half-back).

Born at Belfast, in his school days showed early promise of becoming a good footballer. Larne, an Irish League club, spotted him and persuaded him to sign amateur forms, and after experience in their Reserve side he joined Glenloran. He is regarded as one of the most promising youngsters in Irish football. His football so improved that he found favour with the Selection Committee last season and he was awarded his Irish amateur International Cap, playing against Scotland. Although primarily a half-back, he is equally at home at inside-forward where he has played some brilliant games for Glenloran. He was employed in a linen factory and it was only due to the fact that Ald. S. H. Godfrey was on holiday in Ireland this month that enabled Luton to secure him on professional forms. He has only just reached manhood, is just an inch under 6 ft., and weighs 11½ stone.



Lancelot Hall

(Centre Half)

Signed for Luton at the same time as Childs, a member of the Cockfield team. Darlington born, of fine physique, and played some very fine games for the Reserves last season. A solid defender of the third back type. Has three medals. Was a plater before turning professional. 5ft. 10in. 11st. 7lb

John Nelson

(Centre Half)

Third season. Captain; ideal leader. Chorley his birthplace, and played for Chorley All Saints before joining Chorley, the Lancashire Combination Club. Preston North End fixed him up, and from Deepdale he was transferred to Wolves. Had three seasons at Molyneux, and then the Town paid a big fee for him. Particularly good with his head. Plays cricket and tennis. Was in the bleaching trade before professional football. 6ft 1½in. 12st. 7lb.



James W.

Strathie

(Centre Half)

Recruit. Born at Beancross, Falkirk; played for Camelon Juniors before Falkirk found him a peg in their dressing room. Left them for St. Bernards, and last season was the outstanding player in their successful team. Tall as Jack Nelson, and comes with a high reputation. Like all good Scots, plays golf. 6ft. 1½in. 12st 7lb



William J.

Fellowes

(Half-Back)

Third season. Bradford born, but a Devonshire man at heart, being taken to Tavistock when very young. First club was Tavistock Town, and then Plymouth Argyle made him a professional. At Home Park for three seasons, and then joined Clapton Orient, for whom he played at centre half. Took over left half position at Luton. Has businesses at Tavistock. Plays cricket and golf. 5ft. 9½in. 12st.





George I. Kidd

(Half-back)

Joined Luton just before end of 1934-5 season. Born at Dundee, and played for Dundee North End, Charlton Ath. took him as an inside forward, but, when he went to Gillingham, was developed as a wing-half. A brainy player: shines in attack. Has a Scottish Junior International Cap. Plays tennis. 5ft. 10in. 12st.

Joseph Loughran

(Half-back)

Recruit. School teacher in Luton. Born at Consett, Co. Durham, and first played for Medomsley Juniors. Went to Dudley Training College; gained his place in the team there. Birmingham spotted him, made him a professional. Played in 35 First Division matches for Birmingham. Gained Junior International Caps against Scotland and Ireland in 1935. Good swimmer. 5ft. 6in. 11st.



Edward Oliver Griffiths

(Wing forward)

Recruit. Born at Tipton, Staffs, played for several local junior teams before joining Stourbridge. Luton watched him, and Mr. Liddell persuaded him to throw in his lot with the Town. Strong and fast, much is expected from this youngster. Was an electric welder by trade. Plays tennis. 5ft. 11in. 11st 10lb.



Edward Hancock

(Wing forward)

Second season. Born at Denaby Main, played for Denaby and Gainsborough before being transferred to Liverpool. Next club was Burnley, and was transferred to Luton in the early part of last season. Made outside-right position his own, and qualified for a medal. Good cricketer. Miner before professional footballer. 5ft. 7in. 11st. 3lb.

Luton Town F.C. 1st XI. Fixtures, 1937-38 - - (Division II.)

Date.	Opponents.	Ground.	Goals		Date.	Opponents.	Ground.	Goals	
			For	Against				For	Against
1937					1938				
Aug. 29	—StockportA			Jan. 1	— StockportH		
Sept. 1	— Aston VillaH			" 8	—(3)			
" 4	— Manchester U.H			" 15	—Manchester U.A		
" 6	—Aston VillaA			" 22	—(4) Sheffield U.H		
" 11	—Sheffield U.A			" 29	—Tottenham H.A		
" 15	—Newcastle U.A.			Feb. 5	— BurnleyH		
" 18	— Tottenham H.H			" 12	—(5) BuryA		
" 25	—BurnleyA			" 19	— CoventryH		
Oct. 2	— BuryH			" 26	— BradfordH		
" 9	—CoventryA			Mar. 5	—(6) West HamA		
" 16	—BradfordA			" 12	— SouthamptonH		
" 23	— West HamH			" 19	—BlackburnA		
" 30	—SouthamptonA			" 26	—(S.F.) Sheffield Wed.H		
Nov. 6	— BlackburnH			April 2	—ChesterfieldA		
" 13	—Sheffield Wed.A			" 9	— PlymouthH		
" 20	— ChesterfieldH			" 15	—Notts ForestA		
" 27	—(1) PlymouthA			" 16	—FulhamA		
Dec. 4	— FulhamH			" 18	— Notts ForestH		
" 11	—(2) SwanseaA			" 23	— SwanseaH		
" 18	— Norwich C.H			" 30	—(F) NorwichA		
" 25	— BarnsleyH			May 7	— NewcastleH		
" 27	—BarnsleyA							

The figures and letters in parentheses after the dates are the F.A. Cup rounds.



YOU, too, will prefer

J.W. GREEN'S

J. W. Green, Ltd., The Brewery, Luton.

Telephone : Luton 3131





Leonard T. Rich

(Wing forward)

Third season. Plymouth born, and played for the local Co-operative Stores and Torpoint as a centre-forward. Scoring feats drew the Plymouth scouts. Argyle made him a winger, his speed and ball-control enabling him to make a success of this position. Had several games in the first team since joining Luton, where he has appeared on both wings, and at inside-right. Plays 5ft. 9½in. 11st. 3lb.

Charles Ferguson

(Inside Forward)

Recruit. Born at Dunfermline. While playing for Glasgow Benburb, was awarded Scottish Junior International honours. Fixed up by Middlesbrough, where he was a contemporary of George Martin's. Joined Notts County from whom Luton signed him during the close season. Clever player of whom much is expected. Player before turning professional. Hobbies, golf and swimming. 5ft. 8in. 11st. 2lb.



George Cox

(Centre-forward)

Recruited just before the end of last season. Born at Warnham, Sussex. Played for Horsham before joining The Arsenal, thence to Fulham. Holds two London Combination and one London Challenge Cup medals gained while serving at Highbury. County cricketer for Sussex; strong forcing batsman. Strongly built forward who has been a prolific scorer. 5ft. 10½in. 12st. 4lb.



Joseph Payne

(Centre Forward)

Born at Brimington Common. Last season ranked as one of the best centre forwards in the country; was honoured by the F.A. by being invited to tour Scandinavia. Played against Finland, and scored two goals. Broke Southern Section record last season with 55 goals and tied with Harston for the honour of being highest goal-scorer in the country. Fine all-round cricketer, and has played for Bedfordshire this season. Miner before professional footballer. 5ft. 10½in. 12st.



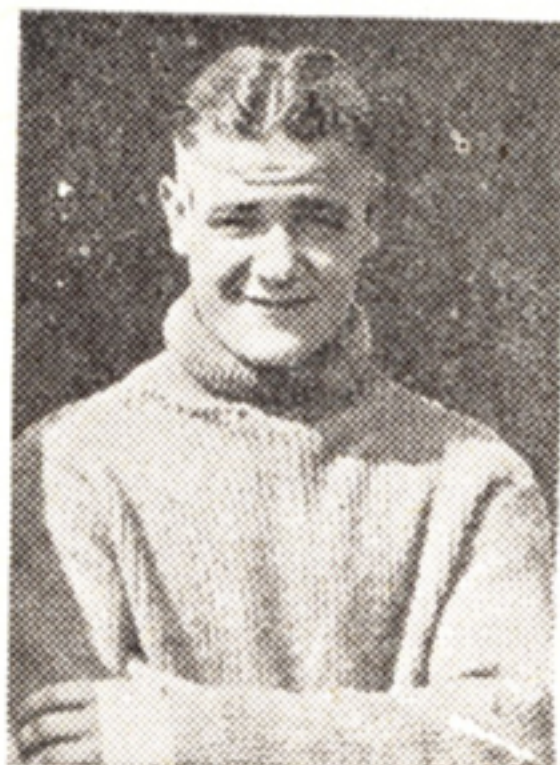


Albert G. Dawes

(Inside forward)
Second season. Born at Frimley Green, and was Northampton's centre-forward for some time. Sharp-shooting claimed attention of Crystal Palace, and he became an inside-left at Selhurst. In 1935-6 scored 38 goals for the Palace, and figured in an England International Trial. Twice broke his jaw early last season. Was signed by Luton just before Christmas, and became inside-right. Good at cricket and tennis. 5ft. 9½in. 11st.

Fred Hogg

(Inside Forward)
Second season. Born at West Auckland. Should become a star. Built on Alex James lines, ball control is splendid, and delights the crowd with his cleverness. Before signing as a professional, played for Etherley and West Auckland Town. Previously for West Auckland Schoolboys and the Bishop Auckland District League team. Won seven medals whilst at school. Was on a coal lorry before turning professional. 5ft. 3½in. 10st.



Fred Roberts

(Inside Forward)
Fourth season. Born at Birmingham, and played for Smethwick Highfield and Piggott's Works before signing professional forms for Birmingham. Gained a place in the first team, but after a season, Luton persuaded Birmingham to part with him. Ever present last season. Grand club player, tireless forager, makes openings for others rather than for himself. Hobbies are bowls, tennis and fishing. 5ft. 8in. 11st 7lb.



John E. Parris

(Wing forward)
from Bournemouth and Boscombe last February. Born at Chepstow. Played for Chepstow Town before going to Bradford, where he was first choice at outside-left for the Park Avenue club for several seasons. Played so well that he was selected for Wales against Ireland in 1932. Moved to Bournemouth, and was their most dangerous forward last season. Tried at outside-right at Clapton, but had the misfortune to be injured. 5ft. 9½in. 12st. 4lb.





George Stephenson

(Wing forward)

Fourth season. Born at Stillington, Durham. First professional club was Durham City. Aston Villa took him for three seasons before transferring him to Luton. Real match-winner on his day, and many of his goals have been invaluable. With Roberts, has struck up ideal understanding, and the wing was one of the best in the Third Division 5ft. 9in. 12st.

Ronald F. Stevens

(Wing forward)

Third season. Only Lutonian on the books. Played for Bromley United before joining Luton. Made two appearances in League team last season, but was hurt at Southend, and had a cartilage operation, but was fit before the end of last season. Should go on improving this season, and shows signs of developing into a dangerous raider. Moulder by trade. 5ft. 7in.

10st. 7lb.



Edward Liddell

(Manager)

Appointed just over a year ago. Expressed confidence in the team's ability to win through to the Second Division in his first season. Was happy without being boastful when the feat was accomplished. Long experience of football as player, scout, and manager. As player, wore the colours of Southampton, Southend, Orient Arsenal. Experience as manager and scout first Queen's Park Rangers, then Fulham, and eventually West Ham.



Archie E. Wickson

Younger than his impressive figure. Ninth season in all. Originally assistant to John M'Cartney. Appointed secretary two years ago. Efficiency his motto. Finds time for cricket with Luton Clarendon, but not often enough. Member of Council of Beds F.A. and Executive of Luton District and South Beds League. Hears more football than he sees. Expects to see less this season owing to increased interest and 1—



Horace Pakes

(Trainer)

Has just achieved second youth through promotion. Is moving quicker towards the First Division than towards the Second, for which he had to wait a long time. Great faith in his players, and a way with them to get the best. Spent half his lifetime as an amateur with the club, and for the last ten years has been training the first team. Wants to train First Division Champions and F.A. Cup-winners.

George S. Martin

(Coach)

Fifth season at Luton. Glasgow born. Played for Hamilton Academicals when 17 years old, and during apprenticeship. Later played for Hull City, Everton and Middlesbrough before joining Luton. Inside forward of great skill. Should prove ideal man for new position. Is skilled sanitary engineer, and tenor vocalist. Hobbies are singing, golf and bowls.



Arthur Pembleton

(Trainer)

Has nearly forgotten when he first signed professional forms. Was centre-half, and wore colours of Mansfield, Notts County, Millwall and Norwich, and prepared for training business diligently. Is skilled and certificated masseur. Hails from Palterton, near Chesterfield. Energetic in every way. Likes cricket, but prefers his job to all else.



Bert Day

(Groundsman)

Has made the pitch fit for a First Division team to use. Now nearing twenty years' service for the Club. Would like to spend more time on the pitch, but has various other duties to fulfil. Keeps young and fit on work, and hopes to see First Division Shield and F.A. Cup in the Board Room.

Luton Town F.C. 2nd XI. Fixtures,

Date	Opponents.	Ground	Goals	
1937			For	Against
Aug. 28	Southend	H... (5—1)		
Sept. 2	Clapton Orient	A... (0—1)		
" 4	Portsmouth	A... (0—3)		
" 8	Clapton Orient	H... (0—1)		
" 11	Chelsea	H... (3—2)		
" 15	Bournemouth	A... (1—3)		
" 18	Tottenham	A... (1—5)		
" 22	Leicester City	H... (1—2)		
" 25	Queen's P.R.	H... (4—0)		
" 27	Leicester City	A... (1—2)		
Oct. 2	Charlton Ath.	A... (0—3)		
" 9	Brighton	H... (1—2)		
" 13	Bristol City	A... (1—1)		
" 16	Swansea	H... (2—0)		
" 23	Crystal Palace	A... (1—2)		
" 30	Reading	H... (6—4)		
Nov. 6	Fulham	A... (1—1)		
" 13	Millwall	H... (5—3)		
" 20	Brentford	A... (0—3)		
" 27	Arsenal	H... (1—1)		
Dec. 4	Southampton	A... (0—5)		
" 11	West Ham	H... (1—2)		
" 18	Watford	A... (3—3)		
" 25	Coventry	A... (1—2)		
" 27	Coventry	H... (0—5)		

1937-38 - (London Combination)

Date.	Opponents.	Ground	Goals	
			For	Against
1938				
Jan.	1—Southend	A... (1—1)		
"	8—Northampton	H... (1—4)		
"	15—Portsmouth	H... (1—1)		
"	22—Chelsea	A... (1—2)		
"	29—Tottenham	H... (3—2)		
Feb.	5—Queen's P.R.	A... (1—2)		
"	12—Charlton Ath.	H... (1—1)		
"	19—Brighton	A... (3—2)		
"	26—Swansea	A... (1—0)		
Mar.	5—Crystal Palace	H... (2—5)		
"	12—Reading	A... (1—1)		
"	19—Fulham	H... (4—0)		
"	26—Millwall	A... (2—9)		
Apl.	2—Brentford	H... (4—2)		
"	9—Arsenal	A... (0—10)		
"	15—Northampton	A... (1—4)		
"	16—Southampton	H... (3—1)		
"	19—Bristol City	H... (1—1)		
"	23—West Ham	A... (1—6)		
"	30—Watford	H... (5—0)		
May	4—Bournemouth	H... (2—1)		

The finest motoring value—

FORD 8 H.P. SALOON

Economical to run

Ask for a trial run

£105 —THE POPULAR CAR

£6 TAX CHEAP INSURANCE

Luton Motor Co., Ltd., Beech Hill, Luton

PHONE 15

MEN WHO HAVE PLAYED FOR LUTON

since the War (1919-20).

1919-20: P. Summers, R. Abbott, H. Whitehead, J. R. Elvey, J. Dunn, F. Hawkes, F. Hull; R. M. Hawkes, T. Urwin, J. Rutherford, T. Parker, J. Brandham, G. Bowler, P. Stewart; S. Hoar, W. J. Grimes, A. Roe, R. Tomlinson, D. Williams, E. Simms, L. Bookman, G. Dodd, F. J. Hensman, E. J. Seymour, H. Higginbotham, F. W. P. Hill.

1920-21: H. Bailey, J. M. Watson, R. Abbott; G. Lennon, A. Tirrell, J. Semple, F. Hull, A. Reynolds, F. J. Hensman; A. Roe, T. Parker, W. Molyneux, J. W. Lamb, H. L. Cockerill, L. R. Bayliss, W. Walsh, P. Stewart; S. Hoar, H. Higginbotham, G. Butcher, F. W. P. Hill, E. Simms, A. Mathieson, L. Bookman, H. Sidney, J. Shankland, J. McKechnie, J. Bradley.

1921-22: H. Bailey, T. Gibbon; A. Tirrell, G. Lennon, R. C. Graham, F. Hull, J. Stephenson; J. H. Foster, R. Roe, J. R. Walker, W. Molyneux, T. Parker, W. Walsh, R. Millar; E. J. Bassett, S. Hoar, H. Higginbotham, S. Reid, E. Simms, A. Mathieson, G. Butcher, L. Bookman, H. Sidney, J. Hall, H. S. Jephson.

1922-23: T. Gibbon, H. Bailey, S. Bird; G. Lennon, A. Tirrell, J. Stephenson, R. Graham; W. Jennings, A. Roe, J. Walker, W. Molyneux, J. H. Foster, R. Millar, A. Brown, T. Parker; S. Hoar, G. Butcher, S. Reid, W. Clarkson, H. Higginbotham, R. Thompson, R. Hoten, T. Irvine, R. Reader, T. Cottingham, W. Henderson, C. Bonsall, J. Grubb.

1923-24: T. Gibbon, J. Orr, W. Shepherd; R. Anderson, R. C. Graham, J. Pearson, A. Tirrell, J. Till; J. H. Foster, W. Jennings, R. Millar, W. Molyneux, A. Roe, J. R. Walker; S. Hoar, W. Henderson, G. Butcher, J. Green, A. Kerr, S. Reid, R. V. Hoten, C. Bonsall, C. Danskin.

Racing hints by the Chief Whip in the Evening Telegraph

MANFIELD-HOTSPUR



Four widths.
Half-sizes.
(Relative prices, boys.)

18/9

Postage extra.

STRANGE that other good Football Boots have not risen to fame, isn't it? Strange, until you consider how completely MANFIELD-HOTSPUR holds the field . . . got famous before others had a chance . . . and satisfies all expectations to-day.

Everybody wears it, in all good matches all over the world.

MANFIELD & SONS, LTD.
376, STRAND, LONDON, W.C.2

1924-25: G. H. Brookes, J. Orr; A. Anderson, R. C. Graham, J. Johnson, J. Till; T. Davies, W. Jennings, R. Millar, J. Mills, A. Roe, J. R. Butcher, E. S. Cockle, W. Keen, J. Shankley, A. Kerr, S. Reid, R. W. Tricker (amateur), R. V. Hoten, A. Brown, G. T. Dennis.

1925-26: H. Mingay, H. Purdy, R. Anderson, R. Graham, J. Till, S. Bedford, G. Richards, W. Jennings, J. R. Walker, R. Millar, S. Neal, A. Rennie, H. Roe, J. Miller, H. Moffat, N. Thomson, J. Shankly, S. Reid, J. Thompson, S. Littlewood, T. Love, W. Agnew, H. Rogers, G. Dennis, F. Robinson.

1926-27: W. Harper, W. E. Kaine, H. Gingay; R. C. Graham, J. Harkins, R. Kingham, R. M. Moir, D. Richards, J. Till, C. Wolstenholme; J. R. Black, C. R. Fraser, J. Fulton, J. Gordon, R. Millar, A. Rennie; W. Agnew, J. Clark, G. Dennis, R. Gillespie, H. Keeling, A. S. Nunn, F. Panther, J. Pointon, S. Reid, N. Thomson, J. T. Thompson, E. Turner, H. Woods, J. Yardley.

1927-28: H. Abbott; J. Muir, P. Spence; R. C. Graham, J. Harkins, R. Kingham, D. Richards, J. Till; J. R. Black, C. R. Fraser, J. Fulton, J. Gordon, J. Lumsden, R. Millar, J. Ramage, J. Reynolds; J. Banks, A. S. Davies, G. T. Dennis, R. G. Galloway, A. S. Nunn, F. G. Panther, J. Pointon, J. Reid, S. Reid, A. Rennie, J. Sutton, H. Woods, J. Yardley.

1928-29: H. Abbott, C. S. Banes, P. Spence; W. Curwen, R. Kingham, R. Graham, B. Harris, R. Haggerty, D. Richards; J. B. Black, J. Bodsworth, A. Clark, J. Donnelly, A. Forbes, C. R. Fraser, J. Fulton, R. Lumsden, R. Millar, J. Reynolds; L. Bedford, W. Birch, R. Boylen, A. Craigie, J. Daly, G. T. Dennis, A. Hutchin, A. S. Nunn, A. Rennie, T. Roe, J. Scott, W. Sheldon, W. Vaughan, A. V. Walters, W. Winnell, H. Woods, J. Yardley.

1929-30: C. S. Banes, G. B. Harford; F. G. Barber, W. Curwen, R. Kingham, D. Richards, E. Smith, R. Walker; J. R. Black, A. Clark, C. R. Fraser, J. Fulton, E. W. H. Gale, R. Millar, F. G. Morgan, A. Smeaton; L. Bedford, W. Birch, R. Boylen, W. Brown, J. Daly, J. Drinnan, A. Harwood, A. Hutchinson, W. McInnes, A. Rennie, W. J. Rickett, W. Sheldon, W. Winnell, H. Woods, J. Yardley.

1930-31: C. S. Banes, G. B. Harford; T. Hodgson, R. Kingham, W. Knox, D. Richards, E. Smith; A. Clark, C. R. Fraser, E. W. H. Gale, A. Hale, H. M'Ginnigle, J. B. Muir, J. E. Page, J. Richmond; J. Armstrong, W. Brown, R. S. Bryce, F. Dent, A. Heslop, G. M'Nestry, A. Rennie, W. Rickett, J. Slicer, P. Smart, J. Yardley.

INFORMS

Football Pools

ESTABLISHED 1927

"SIX POOLS"

No. 1	No. 2	No. 3	No. 4	No. 5	No. 6
10	3	7	4	5	7
Results	Draws	Home	Away	★	Results

also

FIXED ODDS COUPONS

5 Leagues, Nothing Barred

For Credit Account and Coupons, write:—

W. D. WILLSMORE

Member of the National Sporting League

37 ROTHESAY ROAD, LUTON

Phone: LUTON 3161, 3162, 3163, 3164

'Grams: "Inform," Luton.

1931-32: G. B. Harford, J. Imrie; T. Hodgson, R. Kingham, W. Knox, G. C. Wilson; W. Brown, R. S. Bryce, C. R. Fraser, E. W. Gale, A. Hale, V. Jones, F. W. Kean, H. M'Ginnigle, W. Miller; A. S. Black, W. Cupit, J. Chapman, A. Heslop, H. Loasby, G. M'Nestry, A. Rennie, D. Rowe, J. Slicer, T. Tait, G. Turner, A. Wales, J. Yardley.

1932-33: G. B. Harford, J. Imrie; S. A. Coote, T. Hodgson, A. Ives, R. Kingham, T. S. Mackey; W. Brown, B. Diaper, C. R. Fraser, A. Hayhurst, F. W. Kean, H. M'Ginnigle; T. Alderson, W. Corkindale, W. C. Hutchison, A. Mills, A. Nelson, A. Rennie, J. Roberts, D. Rowe, T. Tait, R. S. Weaver, R. Whalley.

1933-34: G. B. Harford, J. L. Mittell; S. A. Coote, J. S. Gibson, R. Kingham, T. S. Mackey, H. Reece; W. Beck, W. Brown, C. R. Fraser, F. W. Kean, H. Lawson, H. M'Ginnigle, J. Rennie, W. Seddon; S. Anderson, S. Bell, T. Bell, L. Hargreaves, F. Holbeach, D. Hutchison, D. Kirkwood, G. S. Martin, G. Pearson, A. Rennie, T. Tait.

1934-35: J. L. Coen, G. B. Harford, C. J. Preedy, S. A. Coote, R. Kingham, T. S. Mackey, H. J. Preece, T. S. Smith; W. Beck, W. Brown, D. Colquhoun, C. R. Fraser, F. W. Kean, G. I. Kidd, H. M'Ginnigle, J. Payne, W. Thayne; J. Ball, S. Bell, T. Bell, C. Cook, W. Crompton, W. Haggard, H. Hackett, W. Harrison, D. Hutchison, G. S. Martin, L. Murphy, W. Pease, A. Rennie, F. Roberts, J. R. Russell, G. Stephenson, J. T. Taylor.

1935-36: J. L. Coen, H. Dolman, H. M'Intosh; H. Booton, S. C. Coote, A. Hubbard, R. Kingham, T. S. Mackey, T. S. Smith; D. Colquhoun, W. J. Fellowes, C. R. Fraser, W. P. B. Godfrey, H. Gooney, G. I. Kidd, H. M'Ginnigle, J. Nelson, W. Thayne; H. Andrews, J. Ball, F. E. Beresford, W. G. Boyd, C. Cook, W. Crompton, M. S. Crook, J. Hodge, G. S. Martin, J. Payne, L. Rich, F. Roberts, F. Sloan, G. Stephenson, R. Stevens, J. T. Taylor, G. Turner.

1936-37: J. L. Coen, H. W. Dolman; H. Booton, A. Hubbard, T. P. King, R. Kingham, B. R. Lutterloch, T. S. Mackey, T. S. Smith; C. Childs, W. J. Fellowes, J. Finlayson, W. P. B. Godfrey, W. H. Gooney, L. Hall, G. I. Kidd, H. M'Ginnigle, J. H. Nelson; J. T. Ball, F. E. Beresford, G. Cox, W. Crompton, E. Hancock, J. Hodge, F. Hogg, F. J. Hosier, G. S. Martin, H. Mills, J. C. Patrick, J. Payne, J. E. Parris, L. T. Rich, F. Roberts, F. Sloan, G. Stephenson, R. F. Stevens.

Complete Football Reports in the Evening Telegraph

MAC GENTLE LTD.

incorporating

THE LUTON MOTOR TYRE CO.
TYRE FACTORS AND MOTOR AGENTS

DUNLOP
GOODYEAR
FIRESTONE
DAVIES
INDIA
Rebuilts,
etc.

at Lowest
Prices



AGENTS FOR
MORRIS
AUSTIN
STANDARD
AND
FORD

USED CAR
BARGAINS

60 NEW BEDFORD ROAD,

REPAIRS

LUTON

ACCESSORIES

PHONE 1340

USED CARS BOUGHT FOR CASH

Bedfordshire Football Association

COUNTY CUP HOLDERS

Premier Luton Town Minor..R.A.F., Henlow
 Junior Elstow Abbey (Wing No. :
 Senior..Vauxhall Motors (Luton)
 President: Mr. E. Humphreys, 22, Rosamond Road,
 Bedford.

Vice-Presidents: Mr. W. Pease, 131, Stockingstone
 Road, Luton; Mr. F. A. Stanton, 10, Spring Road,
 Kempston, near Bedford; Mr. T. Ferguson, "Brandle-
 side," Luton Road, Biggleswade.

Trustees: Mr. C. Green, 73, Hazelbury Crescent
 Luton; Mr. E. Humphreys, 22, Rosamond Road, Bedford.

Auditors: Mr. A. Tearle, 16, Kenilworth Road, Luton.
 Mr. R. K. Brown, 248, Dunstable Road, Luton.

Hon. Sec. and Treasurer: Mr. Albert E. Ansell, 32,
 King Street, Luton.

AFFILIATED LEAGUES AND COMPETITIONS

Bedford County Hospital Cup. A. J. Fielder, Post
 Office, Kempston.

Bedford and District League (1919). E. W. Taylor,
 3, Westfield Road, Bedford.

Bedford and District Thursday Cup (1908). D. Butler,
 89, Salisbury Street, Bedford.

Bedford and District Thursday League (1906). D
 Butler, 89, Salisbury Street, Bedford.

Beds Constabulary A.C. Challenge Cup (1928). P.C.
 R. Winser, Police House, Houghton Regis.

Biggleswade and District League (1908). A. H. Scott,
 62, The Baulk, Biggleswade.

Leighton Football League. L. W. Crossby, 88, Heath
 Road, Leighton Buzzard.

Leighton and District Cup (1913). L. W. Crossby, 88,
 Heath Road, Leighton Buzzard.

Luton and District Charity Cup. H. A. Chambers,
 160, Hitchin Road, Luton.

Luton and District South Beds Football League. H.
 A. Chambers, 160, Hitchin Road, Luton.

Luton Wednesday League. H. T. Hill, 9, Collingdon
 Street, Luton.

Luton Wednesday Cup. H. T. Hill, 9, Collingdon
 Street, Luton.

North Beds Charity Cup (1907). A. H. Scott, 65, The
 Baulk, Biggleswade.

South Midlands League (1922). A. E. Ansell, 32, King
 Street, Luton.

Luton Wednesday Junior Challenge Cup. H. T. Hill,
 9, Collingdon Street, Luton.

Charnley
 and Sons

CONSULTING OPTICIANS

NATIONAL HEALTH INSURANCE

ON THE H.S.A. OFFICIAL LIST OF
 ★ OPTICIANS ★

11 WELLINGTON STREET
 LUTON

'PHONE 1808

CLUBS IN BEDFORDSHIRE

a Secretary's name and address. b Ground.
c Club colours.

Aley Green. a V. S. Banks, 7, Aley Green, nr. Luton.
b Hardy Park Estate. c Royal blue shirts with red facings, black knickers.

Arlesey Town. a R. G. Cheshire, "Cheniston," House Lane, Arlesey. b The Bury Meadow. c Light and dark blue shirts (halves), blue knickers.

Barton United. a T. Burrows, High Street, Barton.
b Falder Road. c White shirts, black knickers.

Bedford Alexandra. a E. G. Lilley, 6, Westbourne Road, Bedford. b Russell Park. c Red and black squares, black knickers.

Bedford Borough Police. a Sgt. Manning, Central Police Station, Bedford. b Gasworks Ground, Lawrence Street. c Dark blue and light blue squares, navy knickers.

Bedford Britannia Sports and Social Club. a L. Looseley, 32, St. Leonards Street, Bedford. b Booker's Lane. c Red and white shirts, black knickers.

Bedford Carlton United. a T. H. Gardner, "Sandhurst," Carlton, Bedford. b Church Field, Chellington (Carlton). c Black with amber V neck, collars and cuffs, white knickers.

Beds Constabulary Athletic Club. a P.c. R. Winsor, Police Station, Biggleswade. c Black and amber quarters, black knickers.

Bedford Corinthians. a K. G. Simmons, 73, Garfield Street, Bedford. b Bedford Park. c White shirts, black knickers.

Bedford Eastern National. a F. Bradshaw, 41, London Road, Bedford. b Russell Park. c Green and white shirts, blue knickers.

Bedford Franklins. a F. J. Lilley, 6, Westbourne Road, Bedford. b Russell Park. c Red shirts, black knickers.

Bedford Gas Athletic. a R. Collingridge, c/o Gas Works, Bedford. b Lawrence Street. c Royal blue, white knickers.

Bedford Griffin Athletic. a E. J. Tyrell, 5a, Midland Road, Bedford. b Russell Park. c Blue and white squared shirts, white knickers.

Bedford Harpur United. a E. P. Toms, 29, Holme Street, Bedford. b Bedford Park. c Red and green quarter shirts, black knickers.

For all Sports News buy the Evening Telegraph

W. BELL & SON

LTD.,

Ladies' and Gentlemen's Tailors



Makers of Overcoats since 1889
22 Chapel St LUTON

PHONE 403

Bedford Igranic, a S. W. Worker, 5, Church Walk, Kempston. b King William IV & Sports Ground, Kempston. c (1st XI) White and Green quarters, black knickers. (2nd XI) Black and Green quarters, white knickers.

Bedford Loco, a B. Collingwood, 26, Farrer Street, Kempston, Bedford. b Bedford Park. c Black and white quarters, black knickers.

Bedford Lynton Works, a C. C. Crouch, c/o Messrs. W. Robertson & Co., Ltd., Lynton Works, Bedford.

Bedford Meltis, a, G. Wilson, 6, Southville-road, Bedford. b Miller Road. c Maroon and White quarters, blue knickers.

Bedford North End, a A. P. Spindler, 18, Hazelwood Road, Bedford. b Astells Field, Cardington Road. c Red shirts, black knickers.

Bedford Post Office, a D. Butler, 89, Salisbury Street, Bedford. b Russell Park. c Black and white striped shirts, blue knickers.

Bedford Queen's Park Rangers, a L. H. Shadrake, 6, Havelock Street, Bedford. b Russell Park. c Navy blue shirts, white knickers.

Bedford Queen's Works A.F.C. a C. H. Cartlidge, 10, St. Paul's Road, Bedford. b Allen Park. c Foyal blue shirts, white knickers.

Bedford St. Cuthbert's, a S. G. Harris, 45, Dudley Street, Bedford. b Russell Park. c Black with amber V shirts, black knickers.

Bedford Town, a F. Cox, 36, Ampthill Street, Bedford. b Ford End Road. c White shirts, blue knickers.

Renhold United, a J. Northcott, Three Horse Shoes, Renhold. b Three Horse Shoes. c Red, white knickers.

Biggleswade & District, a W. Rogers, 33, Lindsell Crescent, Biggleswade. b Fairfield. c Green shirts, white knickers.

Biscot Sports, a W. S. Adams, 1, Mostyn Road, Luton. b Blundell Road Recreation Ground. c Black and amber squares, black knickers.

Collings Wells, a Kenneth Boutwood, Meadow Way, Caddington, nr. Luton. b Chaul End Lane, Caddington. c Amber, blue knickers.

Cranfield United, a A. G. Holman, 5, Bedford Road, Cranfield. b Court Road. c Red shirts, white sleeves and collars, white knickers.

Depot 16th Foot, a Sports Officer, Kempston Barracks, Bedford. b Kempston Barracks. c Black with amber V, blue knickers.

Duloe & Eaton, a G. A. Ingle, Eaton Socon, nr. St. Neots, Hunts. b Old Cricket Field, Eaton Socon. c Blue and quarters, white knickers.

Dunton, a R. Humberstone, 24, High Street, Dunton. b Millow. c Sky blue shirts, navy facings, white knickers.

Dunstable AC-Sphinx, a G. Whitehall, 55, Douglas Crescent, Dunstable. b At works, Watling Street. c Red jerseys with white hoop, white knickers.

Dunstable Athletic Club, a L. Palmer, 40, Borough Road, Dunstable. b Houghton Road. c Royal and white looped shirts, white knickers.

Dunstable Bagshawe's, a W. Shaw, 9, The Pleasance, Dunstable. b Works sports ground. c Blue and white, blue knickers.

Dunstable Kingsbury United, a H. Thomas, 55, Union Street, Dunstable. b Luton Road recreation ground. c Black and white half-stripe, black, white stripe knickers.

Dunstable Rosedale, a S. West, 100, Northfields, Dunstable. b Luton Road recreation ground. c Red and white, white knickers with red stripe.

Dunstable Wanderers, a L. B. Bland, 48, Benning Avenue, Dunstable. b Dunstable Recreation Ground. c White shirts, black knickers.

Elstow Abbey, a D. Cooper, 4, West End, Elstow, Bedford. b Warren, Elstow. c White shirts, black knickers.

Flitwick Rovers, a M. Cherry, 10, Water Lane, East End, Flitwick. b Recreation Field. c 1st team red shirts, 2nd team blue shirts, white knickers.

Gentle's Athletic Club (Stotfold), a K. S. Vardy, 5a, Coppice Mead, Stotfold. b Roker Park. c Royal blue shirts, white knickers.

Girtford Rovers, a A. E. Ibbott, 91, London Road, Sandy. b The Drift. c Royal blue shirts, white knickers.

Goldington, a H. Luff, 46, York Street, Bedford. b Goldington Green. c White with blue V shirts, black knickers.

Great Barford, a E. C. Pursehouse, School House, Great Barford. b Fishers Close or Church End Ground. c 1st team, red and white shirts, white knickers, 2nd team green and white shirts, white knickers.

Harrold Dickens, a A. O. Agman, c/o R. Dickens, Ltd., Harrold, Bedford. b "Congree," Harrold. c Royal blue, white collars and cuffs, white knickers.

Harrold United, a E. D. Pakes, "Lynford," Wood Road, Harrold, Bedford. b "Conegeres." c White shirts, black knickers.

Haynes, a E. J. Hudson, 68, Silver End Road, Haynes. b North Lane. c Black and white striped shirts.

Heath United, a G. Rolls, 4, Sheepcote Corner, Heath. b Fox Corner. c Black, amber stripes, black and white knickers.

Houghton Rangers. a E. Bird, 23, Drury Lane, Houghton Regis. b The Green. c Red and white halves, white knickers.

Husborne Crawley. a T. W. Barnes, 89, Church Street, Ridgmont. b In village. c Scarlet and amber halves.

Ickwell. a G. Reeks, 11, Warden Road, Ickwell, Nr. Biggleswade. b Northill. c White shirts, black knickers.

Kempston Green End United. a L. Jeffrey, 7, Green End, Kempston, Bedford. b Green End. c Green shirts with white collars, black knickers.

Kempston Rovers. a A. J. Fielder, Post Office, Kempston. b Hill Ground. c Red and white striped shirts, blue knickers.

Kempston R.B.S. Sports. a A. Blank, 33, Ditmas Avenue, The Hoo, Kempston. b College Street. c Scarlet and white, white knickers.

Keysoe. a S. G. Chapman, Post Office, Keysoe, Bedford. b Whitlock's Field, The Row, Keysoe. c White shirts, blue knickers.

Langford. a H. S. Dilley, 48, Station Road, Langford. b Vicarage End Ground. c Red shirts, white knickers.

Leighton Arnold's Sports. a W. T. Woolhead, 7, Mill Road, Leighton Buzzard. b Wayside Sports, Grovebury Road. c Yellow and blue quarters, white knickers.

Leighton Marley Tiles. a L. R. Taylor, Marley Tiles, Stanbridge Road, Leighton Buzzard. b Scraggs' Meadow, North Street. c Green and yellow squares, black knickers.

Leighton Stonehenge Bricks. a D. G. Lee, Stonehenge Bricks, Ltd., Leighton Buzzard. b Vandyke Road. c Red shirts, white facings, white knickers.

Leighton United. a E. Brinklow, 3, Leighton Road, Leighton Buzzard. b Wayside Sports Ground. c Royal blue shirts with white collars and cuffs, white knickers.

Lidlington United. a A. Hurst, 73, Church Street, Lidlington. b Thrupp End Farm. c Red shirts, white knickers.

Luton Adamant Athletic. a H. Day, c/o Adamant Engineering Co., Luton. b Stockwood (Farley Hill). c Royal blue shirts, with white collars and cuffs, white knickers.

Luton Albion. a C. Lovell, 1, Albert Road, Luton. b Pope's Meadow. c Amber shirts, black knickers.

Luton Amateur. a R. K. Brown, 248, Dunstable Road, Luton. b Waterlow's, Dunstable. c Red and white shirts, blue knickers.

Luton Battalion Boys' Brigade. a K. W. Stanford, 61, Cambridge Street, Luton. b No. 4 Pope's Meadow. c Navy and white quarters, white knickers.

Luton Boys' Club. a R. R. Cox, 49, St. Paul's Road, Luton. b Farley Hill and Stockwood Park. c Blue and white quarters, black knickers.

Luton Borough Police A.C. a John H. Wood. c Black and red shirts, white knickers.

Luton Brewery. a R. M. Kirkwood, Luton Brewery, Park Street West, Luton. b Stockwood Park. c Green, white collar, white knickers.

Luton Bromlea United. a D. J. Aldridge, 19, Maryport Road, Luton. b No. 2 Stockwood Park. c Royal blue shirts, trimmed white, white knickers.

Luton Brown & Green's. a K. Howes, 23, Willow Lane, Luton. b No. 3 Pope's Meadow. c Green and brown hoops, black knickers.

Luton Chapel Street Wanderers. a S. W. Ludlow, 21, Churchill Road, Luton. b No. 6 Bell Close. c White shirts with black collars and cuffs, black knickers.

Luton Chaul End Clarence. a J. H. Cooper, 14, Warren Road, Luton. b Parrish's Field. c Red and green striped shirts, black knickers.

Luton Christ Church Institute. a T. C. Potts, 24, Napier Road, Luton. b Chaul End Lane. c Black and white halves, black knickers.

Luton Clarence. a P. Emerton, 48, Durham Road, Luton. b No. 3 Pope's Meadow. c Claret with black facings, black knickers.

Luton Co-op. Wednesday. a A. Barth, 21, Coniston Road, Limbury. b Stockingstone Road, Luton. c Black and amber quarters, navy knickers.

Luton Commer Cars. a S. F. Gray, 169, Gardenia Avenue, Luton. c Green shirts with white collars and cuffs, black knickers.

Luton Crusaders. a S. Hawes, 32, Warren Road, Luton. b No. 1 Pitch, Pope's Meadow. c Green black hoops, black knickers.

Luton Cundall Athletic & Sports Club. a S. C. Jay, c/o Cundall Folding Machine Co., Ltd., Luton. b Ashcroft Road, Stopsley. c Emerald green shirts with black collars and cuffs, white knickers.

Luton Dallow Rangers. a G. A. Ginger, 1, Dallow Road, Luton. b Dallow Road recreation ground or Pirton Hill Estate. c Red and black quarters, black knickers.

Luton Davis Athletic. a R. H. Sharp, 272, Biscot Road, Luton. b Sports Ground, Dallow Road. c Red and black quarters, black knickers.

Luton Depot London Transport. a F. Visick, 25, Park Street West, Luton. b Pope's Meadow. c White, black facings, black knickers.

Luton Eastern National. a F. Tomlinson, 62, Cobden Street, Luton. b Blundell Road. c Green-black squares, white knickers.

Luton Electrolux. a G. H. Wood, 306, Beechwood Road, Luton. b Lewsey Road. c Yellow and green shirts, black knickers.

Luton Gasworks Athletic Club. a F. Coote, c/o Luton Gasworks, Dunstable Road, Luton. b Dallow Road. c Navy and amber quartered shirts, black knickers.

Luton Hamilton. a L. E. H. Fox, 15, Hastings Street, Luton. b No. 7 Bell Close. c Red and black, navy knickers.

Luton Hayward-Tyler Junior. a W. W. Fagg, The Gardens, Putteridge Park. b No. 6, Bell Close. c Green, white collars and cuffs, black knickers.

Luton International Friendship League. a R. Cawdell, 13, Wood Street, Luton. c Green and white quarters, white knickers.

Luton Lyndale Athletic F.C. a R. A. Smith, 123, Strathmore Avenue, Luton. b No. 4, Pope's Meadow. c Black and amber quarters, black knickers.

Luton Manor Park Rangers. a A. Day, 82, Cambridge Street, Luton. c black and blue, white knickers.

Luton Nalga. a B. Davis, Borough Treasurer's Department, Town Hall.

Luton Park Street Athletic. a J. P. Whiting, 51, Harcourt Street, Luton. b Pope's Meadow. c Maroon and white, dark blue knickers.

Luton Skefko. a H. Mitchell, Skefko Works, Luton. b Stockwood Park. c Maroon and sky blue shirts, white knickers.

Luton Spartan. a E. Strapp, 11, Stratford Road, Luton. b Stockwood Park. c Black and white quarters, black knickers.

Luton Stardale. a R. Barrett, 3, Holland Road, Luton. b Stockwood Park. c Blue shirts with white sleeves and trimming, white knickers.

Luton St. Mary's. a R. Kightley, 117, Park Street, Luton. b Gas Works, Dallow Road. c White shirts, black knickers.

Luton Sundale. a R. Readhead, 34, Lyndhurst Road, Luton. b Stockwood Park. c White shirts with black facings, black knickers.

Luton Town. a A. E. Wickson, 84, Kenilworth Road, Luton. b 84, Kenilworth Road. c White shirts with black collars and cuffs, black knickers with white seams.

The Evening Telegraph—Luton's Own Local Evening

“Furnish at Merchants”

Cash or Deferred Terms

All goods are marked
in plain figures at
COMPETITIVE CASH PRICES
and those prices are the
basis of our **DEFERRED**
TERMS which can be
arranged to suit individual
requirements. ★ ★ ★

F. MERCHANT & SONS,

COMPLETE HOUSE FURNISHERS
AND REMOVAL CONTRACTORS,

8 & 10, Manchester Street,
LUTON.

PHONE 252

EST. 1855

ADVERT. ISSUED BY F. MERCHANT & SONS, LTD.

Luton Wanderers. a A. Owen, 39, Wickstead Avenue, Leagrave. b No. 4 Pope's Meadow. c Red and white striped shirts, black knickers.

Luton Wednesday. a L. G. Kendrick, 32, George Street, Luton. b Gasworks Ground, Dallow Road. c Black and white quarters, black knickers.

Luton Wednesday Ridgway. a W. Hinds, 58, Richmond Hill. b Pope's Meadow. c Red with white collars and sleeves, white knickers.

Marston Rovers. a R. T. Allen, 150, Bedford Road, Marston Moreteyne, Bedford. b Bell Field. c Red and white quarters, also green with white facings, white knickers.

Marston Shelton United. a G. E. Gillett, 174, Lower Shelton Road, Marston Moreteyne. b Upper Shelton. c Claret, and sky blue knickers.

Meppershall. a K. Stapleton, 23, Fildyke Road, Meppershall. b Church Meadows. c Red and green shirts, white knickers.

Royal Air Force, Cardington. a Flight-Sergt. G. Butler. b R.A.F., Cardington. c Blue and white halves, blue knickers.

Royal Air Force (Henlow). a Sgt. C. Harrall, 292D Married Qtrs., R.A.F., Henlow. b Astra Ground. c Red and blue quarters, black knickers.

Sandy Albions. a S. Daniels, 105, St. Neots Road, Sandy. b Recreation Ground, Bedford Road. c Black and white shirts, black knickers.

Sandy Sports. a C. Abbott, 15, Laburnum Road, Sandy. b The Drift. c Black-white stripes, white knickers.

Shefford Athletic. a R. Johnstone, 11, North Bridge Street, Shefford. b Hardwicke. c Claret and sky blue striped shirts, black knickers.

Shillington Athletic. a D. Twydell, 23, Church Street, Shillington. b High Road. c Blue and white shirts, white knickers.

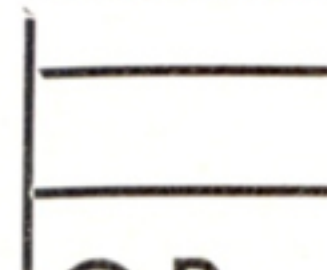
Shillington Rangers. a F. S. Quayle, 69, Bury Road, Shillington. b Woodside (Shillington). c Red shirts with white V, white knickers.

St. Andrew's, Woodside (Robin Hoods) a C. A. Rolt, "Glengarth," Front Street, Slip End nr. Luton. b Stockwood Park. c Green and white quarters, blue knickers.

Slip End Fighting Cocks. a A. F. Wood, 33, Summer Street, Slip End. b Woodside Road. c Probably green and white.

Acetylene Welding, Turning,
Battery Repairing and
Charging.

Petrol, Oils etc.



OR



SERVICE AND SATIS-
FACTION IN BUYING
A SECONDHAND CAR
OR MOTOR CYCLE

TRY

CLAREMONT GARAGE



FIRST

58a LEAGRAVE ROAD, LUTON

ALSO SECONDHAND SPARES FOR ALL
MAKES OF CARS and MOTOR CYCLES

Stevington. a H. Warwick, Church Road, Stevington. b Mill Field. c Blue and amber quarters, black knickers.

Stewartby Works. a J. Law, Stewartby, nr Bedford. b Recreation Ground. c Red shirts, black knickers.

Stondon Athletic. a H. J. Downing, 101, Station Road, Lower Stondon, nr. Shefford. b Upper Stondon. c Black and amber shirts, white knickers.

Stopsley. a R. Warner, 624, Hitchin Road, Stopsley. b Butterfield Green. c Red and white quarters, black knickers.

Stopsley United. a R. G. Toyer, 29, Cannon Lane, Stopsley. b Butterfield Green. c Blue, white V, black knickers.

Sundon F.C. a R. C. Peach, Sundon. b Glenister's Meadow. c Amber-black stripes, navy knickers.

Sutton Rovers. a F. Birch, 27, Sutton Cross Road. b Sutton Park. c Green-amber squares, white knickers.

Three Counties Hospital. a Rev. R. B. Seccombe, The Chaplaincy, Arlesey. b Adjoining Hospital. c Green and white quarters, white knickers.

Toddington Rovers. a A. C. Crees, Toddington. b Luton Road. c Black and white striped shirts, black knickers.

Vauxhall Motors (Luton). a K. Edge, c/o General Secretary, Vauxhall Motors Recreation and Social Club, Luton. b Kimpton Road (opposite works). c Royal blue and gold shirts, black knickers.

Waterlow's (Dunstable). a W. W. Goodyear, "Joci," Lancet Hill, Dunstable. b Main London Road. c Red and black striped shirts, white knickers.

Wilstead United. a H. W. Porter, Luton Road, Wilstead. b Rear Wilstead Garages. c Yellow and blue, blue knickers.

Wootton Blue Cross. a H. Tysoe, 78, Bedford Road, Wootton. b Recreation ground. c Navy and sky, navy knickers.

Wrestlingworth. a B. Deeble, 1, Tadlow Road, Wrestlingworth. b Church Meadow. c Maroon and gold, white knickers.

Wymington. a G. H. Wood, 9, New Estate, Wymington, nr. Rushden. b Podington Road. c Red and black, white knickers.

Racing hints by the Chief Whip in the Evening Telegraph

How they Finished, 1936-7

DIVISION I.

	P.	W.	L.	D.	F.	A.	P.
Manchester City	42	22	7	13	107	61	57
Charlton Athletic	42	21	9	12	58	49	54
Arsenal	42	18	8	16	80	49	52
Derby County	42	21	14	7	93	90	49
Wolves	42	21	16	5	84	67	47
Brentford	42	18	14	10	82	78	46
Middlesbrough	42	19	15	8	74	71	46
Sunderland	42	19	17	6	89	87	44
Portsmouth	42	17	15	10	62	66	44
Stoke City	42	15	15	12	72	57	42
Grimsby Town	42	17	18	7	86	81	41
Birmingham	42	13	14	15	64	60	41
Chelsea	42	14	15	13	52	55	41
Preston North End	42	14	15	13	56	67	41
Huddersfield Town	42	12	15	15	62	64	39
West Bromwich Albion ..	42	16	20	6	77	98	38
Everton	42	14	19	9	81	78	37
Liverpool	42	12	19	11	62	84	35
Leeds United	42	15	23	4	60	80	34
Bolton Wanderers	42	10	18	14	43	66	34
Manchester United	42	10	20	12	55	78	32
Sheffield Wednesday	42	9	21	12	53	69	30

DIVISION II.

	P.	W.	L.	D.	F.	A.	P.
Leicester City	42	24	10	8	89	57	56
Blackpool	42	24	11	7	88	53	55
Bury	42	22	12	8	74	55	52
Newcastle United	42	22	15	5	80	56	49
Plymouth Argyle	42	18	11	13	71	53	49
West Ham United	42	19	12	11	73	55	49
Sheffield United	42	18	14	10	66	54	46
Coventry City	42	17	14	11	66	54	45
Aston Villa	42	16	14	12	82	70	44
Tottenham Hotspur	42	17	16	9	88	66	43
Fulham	42	15	14	13	71	61	43
Blackburn Rovers	42	16	16	10	70	62	42
Burnley	42	16	16	10	57	61	42
Barnsley	42	16	17	9	50	64	41
Chesterfield	42	16	18	8	84	89	40
Swansea Town	42	15	20	7	50	65	37
Norwich City	42	14	20	8	63	71	36
Nottingham Forest	42	12	20	10	68	90	34
Southampton	42	11	19	12	53	77	34
Bradford	42	12	21	9	52	88	33
Bradford City	42	9	21	12	54	94	30
Doncaster Rovers	42	7	25	10	30	84	24

DIVISION III. (SOUTH)

	P.	W.	L.	D.	F.	A.	P.
LUTON TOWN	42	27	11	4	103	53	58
Notts County	42	23	9	10	74	52	56
Brighton	42	23	13	5	74	43	53
Watford	42	19	12	11	85	60	49
Reading	42	19	12	11	76	60	49
Bournemouth	42	20	13	9	65	59	49
Northampton Town	42	20	16	6	85	68	46
Millwall	42	18	14	10	64	54	46
Queen's Park Rangers	42	18	15	9	73	52	45
Southend United	42	17	14	11	78	67	45
Gillingham	42	18	16	8	52	66	44
Clapton Orient	42	14	13	15	52	52	43
Swindon Town	42	14	17	11	75	73	39
Crystal Palace	42	13	17	12	62	61	38
Bristol Rovers	42	16	22	4	71	80	36
Bristol City	42	15	21	6	58	70	36
Walsall	42	13	19	10	63	85	36
Cardiff City	42	14	21	7	54	87	35
Newport County	42	12	20	10	67	98	34
Torquay United	42	11	21	10	57	80	32
Exeter City	42	10	20	12	59	88	32
Aldershot	42	7	26	9	50	89	23

LONDON COMBINATION

	P.	W.	L.	D.	F.	A.	P.
Arsenal	46	30	8	8	139	39	68
West Ham United	46	30	10	6	124	54	66
Charlton Athletic	46	25	10	11	99	47	61
Coventry City	46	26	13	7	117	62	59
Chelsea	46	23	14	9	97	81	55
Portsmouth	46	21	13	12	91	64	54
Tottenham Hotspur	46	22	15	9	117	82	53
Fulham	46	22	16	8	89	71	52
Brentford	46	21	19	6	84	77	48
Queen's Park Rangers	46	21	20	5	78	80	47
Crystal Palace	46	17	17	12	74	82	46
Northampton	46	17	17	12	86	93	46
Southend United	46	17	21	8	86	103	42
Brighton & Hove Albion ..	46	15	19	12	72	90	42
Bournemouth	46	17	22	7	61	94	41
Leicester City	46	17	23	6	69	92	40
Watford	46	15	23	8	83	102	38
Reading	46	16	24	6	78	109	38
Luton Town	46	14	23	9	80	110	37
Swansea Town	46	13	23	10	58	88	36
Bristol City	46	14	24	8	62	96	36
Southampton	46	12	24	10	75	104	34
Millwall	46	14	26	6	75	114	34
Clapton Orient	46	12	27	7	50	109	31

Before and after the Match visit the Sugar Loaf Hotel

King Street, Luton : Phone 1185

*Prices in the Lounge and all Bars
of Luton's Celebrated Free House*

All celebrated brands of Whisky, including
Johnny Walker, White Label, Black & White
Hollands Gin, Booth's Gin, Brandy, etc.

(De Kuyper)

Large Glass of
PORT
WHITE
PORT
SHERRY

6 D.

WINE
COCKTAILS
PHOSFERINE
WINE
LARGE EGG
WINE

Bottle of

Worthington's I.P.A.
Younger's Scotch Ale
Graham's Lager

Guinness's Extra Stout
(Harp Label)
Lemonade and Claret

ON DRAUGHT

Mitchells & Butler's Best Bitter ½pt. 3½d.

Worthington's I.P.A. - - ½pt. 4d.

IN BOTTLE

Watney's or Ind Coope's Ale 4d.

All Beers automatically maintained at the ideal temperature

BEER IS BEST—THE BEST IS HERE



CONGRATULATIONS TO THE TOWN CLUB

It was certainly a long time to wait before they became Champions—but—there's no need to wait at all for the best Sports Goods and Value—if you consult **PARTRIDGES** immediately

FOOTBALLS, JERSEYS,
KNICKERS, SHINGUARDS
HOSE, BOOTS, GOAL
NETS, KIT BAGS, ETC.

Every requisite at lowest prices. Special terms to Clubs
Send for our Winter Sports List to-day. It is Free

PARTRIDGE & CO.

10-12, CHAPEL STREET, - LUTON

Phone 234