

1938 The Luton News 1939

FOOTBALL HANDBOOK

2^D

Make
FOSTER BROTHERS
your goal
AND SAVE
EVERYTIME!

FOSTER
BROTHERS CLOTHING COMPANY LTD.
146 BRANCHES

22 & 24, GEORGE STREET, LUTON
5, HIGH ST. SOUTH, DUNSTABLE

PLOWMANS LIMITED

for

VAUXHALL Cars

SALES & SERVICE

**HITCHIN ROAD
Luton, Beds.**

PHONE 2226/7

Luton Town Football and Athletic Club LIMITED



The Chairman

President: Mr. Harry Arnold, C.A., J.P.

Directors:

Chairman: Alderman Chas. Jeyes.
Messrs. E. Hugh Woods (Vice-Chairman, F. J. Andrews,
Stanley H. Godfrey, C.A., Horace S. Hewson Percy G.
Mitchell, C.C., Philip Wright, Henry Richardson, C.C.

Manager: Mr. Neil McBain.

Secretary: Mr. A. E. Wickson.

Hon. Medical Officer: E. J. Crarer, M.B., Ch.B.

Colours: Shirts—White Shirts with white straw hat
badge on a black background.

Knickers—Black Knickers.

Hose—Black and White hooped stockings.

Ground: Kenilworth Road (off Dunstable Road), Luton.
Registered Office: 70 and 72, Kenilworth Road, Luton.

Complete Football Reports in the Evening Telegraph

THE OUTLOOK

AFTER one season in the Second Division we can readily acknowledge that there is a very definite border line between Second and Third Division football.

True, there are Third Division clubs of such high standard that they will vie with the average Second Division club, which is only another way of saying that we recognise only a very thin line between Luton Town and the leading clubs of the Third Division.

In the Second Division, for the average club the tension is so severe that it is as big a problem how to retain the status as how to improve upon it.

The situation for half the clubs in this Division at the end of last season was without parallel : it was not certain what clubs would move higher or what clubs would be reduced.

Just how difficult it was can be understood from the position of Stockport County, promoted with Luton, but falling out after one season only.

Luton Town directors must have learned much from the one season's experience. They know that it means hard and careful administration to retain membership of the Second Division, and I think they have learned also that mere spending of money cannot assure success, though it is a big factor if invested in the right direction.

Few changes have been made in the personnel of the playing strength, but the policy of the Board seems to be clearly enunciated in the wealth of latent talent, and we may reasonably believe that the policy of the Board is to build for the future, ensuring as far as possible present status, and at the same time developing young players who may eventually carry the club into the highest grade.

We cannot claim to have a new promotion side this season, nor can any other Second Division club. With good fortune, however, we may gain honours. If unity or purpose and co-operation can do it, we may be certain that Directors and players will not be found wanting.

**BET with Luton's leading
BOOKMAKER**

WALTER H. LANCASTER

**56 Cambridge Street.
LUTON**

AND

"KLONDYKE," HARPENDEN

Whose Slogan is

STRICT PRIVACY :: PROMPT PAYMENT

Commissions accepted for all meetings under Jockey Club, N.H. or Pony Turf Club Rules. Dog Racing under N.G.R.C. Rules. Also at Luton Stadium.

FIXED ODDS FOOTBALL COUPONS ON APPLICATION

PHONE :—

LUTON
2340 2341
2342 2343
2344 2345
1832 1350

GRAMS :—

REQUIRE
LUTON

REQUIRE
HARPENDEN

PHONE :—

HARPENDEN

1080
1081

CREDIT ACCOUNTS OPENED ON APPROVED
REFERENCES.

The Town Chairman's Message.

WE managed after a grand fight to retain our Second Division status, and to finish in a much more respectable position than at one time appeared probable.

I believe I can say that very few of our supporters really feared that we should not be able to hold our place, and I can assure you that the directors were never in doubt.

Nor do we doubt our ability to win through again this season, and we believe that we shall gain a higher position.

It is usual for supporters to demand new players during a close season, and the desire is not confined to supporters. Directors and officials wish to go from strength to strength, but competition was never so severe as to-day, and it is obvious that the resources of Luton Town do not permit of payment of extravagant transfer fees.

We are convinced that we have a stronger force than last season, and, better still, we have laid plans for the training of young players who are likely to provide against any loss of status, and, we sincerely hope, to enable us within a reasonable period to reach the First Division.

Supporters will appreciate the efforts that have been made on their behalf by the Bobbers' Stand Club in conjunction with the Board of Directors, and we feel certain that we shall have new records during the coming season.

In conclusion let me say to all supporters once more: While the Board of Directors commands your confidence, we shall continue to make progress, and the future is in your hands not less than ours.

On behalf of the Board and the players I thank the supporters for their keen and lively interest, and trust that ere long there will be the reward they so earnestly desire—Luton Town as a First Division Club.

CHAS. JEYES.

AFTER AN . . . ENJOYABLE MATCH

Spend an enjoyable
hour or so at the

SUGAR LOAF LEAGRAVE

Where Mr. and Mrs.
J. Randall will give you
a cordial welcome and
where you will find
genial company.



SUGAR LOAF LEAGRAVE



Pull-in
For Cars

Buses stop
at Door

Fully
Licensed

Covered
Accommo-
dation in
Gardens

MEN WHO HAVE PLAYED FOR LUTON since Professionalism was adopted

1891-2: J. Burley; Sanders, Hoy; Wright, Paul, Taylor,
E. H. Lomax; F. K. Whitby, Deacon, C. Lomax, Ocle, H.
Whitby, Chesher.

1892-3: Burley, T. Read; Sanders, Hoy, George, Wil-
son; Wright, Julian, Taylor, Watkins; Brown, Chesher,
Allen, H. and F. Whitby, Barbour, Galbraith, J.
McKenzie, Kirk.

1893-4: Bee; Chesher, Wilson, C. Reed; Watkins,
Julian, Taylor; H. Whitby, Allen, Galbraith, Finlayson,
Vickers, J. Dimmock, Brown, Hayes.

1894-5: Bee; Chesher, McCartney, M. D. Nicholson,
McEwin, Watkins, McCrindle, Howe, Collins; Brown,
Gallacher, Galbraith, Prentice, Allen, Dimmock, Jack.

1895-6: Jack, Russell, Williams; Stirton, M. D. Nichol-
son, McCartney, McEwin, Watkins, Stewart, Docherty;
Gallacher, Finlayson, Galbraith, Parkinson, Birch, Ekins,
Coupar, Dimmock.

1896-7: Williams; Davies, McCartney, McEwin; Perrins,
Stewart, Docherty, Watkins; Gallacher, Finlayson,
McInnes, Galbraith, Birch, Coupar, Ekins, Dimmock,
Brown.

1897-8: Williams; McCartney, McEwin; Davies, Stewart,
Docherty, Perrins; Gallacher, Coupar, Birch, Clarke,
Donaldson, Little, McInnes, Ekins, Durrant.

1898-9: Perkins; H. Williams, Moore, Dow; C. Ford,
Clark, Sharp, Crump; Durrant, Hewitt, W. Ford,
Kemplay, Draper, McInnes, Brock, Ekins.

1899-1900: Daw; Dow, McCurdy; Morrison, Stewart,
Brown, Williams, Rally; Inglis, Brock, Fairgrieve, Draper,
McInnes, Eckford.

1900-1: Monks; Ord, Lindsay, McCurdy; Clifford,
Holdstock, Williams, Cox; Brown, Blessington, Moly-
neux, Burbage, Dempsey, Tierney, Saxton, Durrant.

1901-2: Ord; Lindsay, Sharp, Street, F. Hawkes,
White, Williams, R. Hawkes; Durrant, Blessington,
Brown, Barker, Tierney, Colvin.

1902-3: Frail; Lindsay, Sharp, Hood; F. Hawkes,
White, Williams, R. Hawkes; Durrant, Blessington,
Hilsdon, Moody, Davidson, Gall, Allsopp.

1903-4: Thompson; Bennett, McEwin; F. Hawkes,
White, Williams, R. Hawkes; Durrant, Eaton, McKee,
Storey, Moody, Allsopp, Griffiths, Madden.

1904-5: Lindsay; Turner, McEwin, J. Dow; F. Hawkes, White, R. Hawkes, Pritchard, Williams; Eaton, Ross, Lamberton, Penman, Moody, Wallace Barnes.

1905-6: Platt, H. Farr; Blackett, McCurdy, J. Dow, Else, Watkins; F. Hawkes, White, R. Hawkes, Gallacher; Warner, Macdonald, Brown, E. Dobson, Pickering, Barnes, Latheron.

1906-7: Platt, H. Farr; Hogg, Jackson, McCurdy; F. Hawkes, White, R. Hawkes, Jones; Gallacher, Warner, Schofield, Macdonald, Brown, Murphy, E. Dobson, Gittins, Pickering, Barnes, Fitzpatrick, Latheron.

1907-8: Platt, Jarvis, H. Farr; Hogg, Nicholson, Dimmock, McCurdy; F. Hawkes, Jones, White, R. Hawkes; Rankin, Walders, Rigate, Hall, Brown, Pearson, Farrant, Moody, Latheron.

1908-9: Platt, Jarvis; Dimmock, McCurdy, Gregory, Chapman; F. Hawkes, Jones, R. M. Hawkes, White; Brown, Rigate, Haycock, Menzies, Bradley, Stansfield, Moody, Johnson.

1909-10: Jarvis, Fry; Hedley, McCurdy, Chapman, Rayner, Ruffett, Potts; F. Hawkes, Jones, R. M. Hawkes, Slennett, Trueman; Brown, Quinn, Smith, Moody, Stansfield, Johnson, Divine, Moore, Porter, Schofield.

1910-11: Naisby, Jarvis; Wightman, Chapman, Potts, Webb, J. Ashton, C. Watson; F. Hawkes, Bushell, R. M. Hawkes, Johnson, Brown, Quinn, Walker, Smith, Stephenson, Moody, Lashbrooke, Streeton.

1911-12: Naisby; Wightman, Potts, Ashton, A. Brown; F. Hawkes, Bushell, R. M. Hawkes, Brown, Walker, Stephenson, Moody, Stansfield, Johnson, Shepherd, Walden, Lashbrooke, Streeton.

1912-13: J. W. Day, R. Abbott, H. Bateman; C. G. Henderson, E. J. Potts, J. Jarvie; F. Hawkes, S. Thompson, T. T. Wilson, R. M. Hawkes; J. Stephenson, A. H. Wileman, W. Smith, J. Murphy, B. Holland, T. Streeton, A. Worth.

1913-14: J. T. Mitchell, R. Abbott; J. R. Elvey, J. Robinson, J. Jarvie; F. Hawkes, R. W. Frith, R. M. Hawkes, T. T. Wilson, M. Donaghy, E. Stevens, A. F. Durrant, A. H. Wileman, E. Simms, R. Brewis, F. Rollinson, J. Wilkie, S. Hoar.

1914-15: J. T. Mitchell, R. Abbott; J. R. Elvey, J. Dunn, J. Robinson, E. J. Potts; F. Hawkes, R. W. Frith, R. M. Hawkes, T. T. Wilson, E. G. Needham, J. Brandham; H. P. Roberts, R. N. Macfarlane, A. H. Wileman, A. Roe, E. Simms, W. Heath, F. Rollinson, J. Chipperfield, F. Lindley, S. Hoar.

(WAR INTERVAL).

1919-20: P. Summers, R. Abbott, H. Whitehead, J. R. Elvey, J. Dunn, F. Hawkes, F. Hull; R. M. Hawkes, T. Urwin, J. Rutherford, T. Parker, J. Brandham, G. Bowler, P. Stewart; S. Hoar, W. J. Grimes, A. Roe, R. Tomlinson, D. Williams, E. Simms, L. Bookman, G. Dodd, F. J. Hensman, E. J. Seymour, H. Higginbotham, F. W. P. Hill.

1920-21: H. Bailey, J. M. Watson, R. Abbott; G. Lennon, A. Tirrell, J. Semple, F. Hull, A. Reynolds, F. J. Hensman; A. Roe, T. Parker, W. Molyneux, J. W. Lamb, H. L. Cockerill, L. R. Bayliss, W. Walsh, P. Stewart; S. Hoar, H. Higginbotham, G. Butcher, F. W. P. Hill, E. Simms, A. Mathieson, L. Bookman, H. Sidney, J. Shankland, J. McKechnie, J. Bradley.

1921-22: H. Bailey, T. Gibbon; A. Tirrell, G. Lennon, R. C. Graham, F. Hull, J. Stephenson; J. H. Foster, A. Roe, J. R. Walker, W. Molyneux, T. Parker, W. Walsh, R. Millar; E. J. Bassett, S. Hoar, H. Higginbotham, S. Reid, E. Simms, A. Mathieson, G. Butcher, L. Bookman, H. Sidney, J. Hall, H. S. Jephson.

1922-23: T. Gibbon, H. Bailey, S. Bird; G. Lennon, A. Tirrell, J. Stephenson, R. Graham; W. Jennings, A. Roe, J. Walker, W. Molyneux, J. H. Foster, R. Millar, A. Brown, T. Parker; S. Hoar, G. Butcher, S. Reid, W. Clarkson, H. Higginbotham, R. Thompson, R. Hoten, T. Irvine, R. Reader, T. Cottingham, W. Henderson, C. Bonsall, J. Grubb.

1923-24: T. Gibbon, J. Orr, W. Shepherd; R. Anderson, R. C. Graham, J. Pearson, A. Tirrell, J. Till; J. H. Foster, W. Jennings, R. Millar, W. Molyneux, A. Roe, J. R. Walker; S. Hoar, W. Henderson, G. Butcher, J. Green, A. Kerr, S. Reid, R. V. Hoten, C. Bonsall, C. Danskin.

1924-25: G. H. Brookes, J. Orr; A. Anderson, R. C. Graham, J. Johnson, J. Till; T. Davies, W. Jennings, R. Millar, J. Mills, A. Roe, J. R. Butcher, E. S. Cockle, W. Keen, J. Shankley, A. Kerr, S. Reid, R. W. Tricker (amateur), R. V. Hoten, A. Brown, G. T. Dennis.

1925-26: H. Mingay, H. Purdy, R. Anderson, R. Graham, J. Till, S. Bedford, G. Richards, W. Jennings, J. R. Walker, R. Millar, S. Neal, A. Rennie, H. Roe, J. Miller, H. Moffat, N. Thomson, J. Shankley, S. Reid, J. Thompson, S. Littlewood, T. Love, W. Agnew, H. Rogers, G. Dennis, F. Robinson.

1926-27 : W. Harper, W. E. Kaine, H. Mingay ; R. C. Graham, J. Harkins, R. Kingham, R. M. Moir, D. Richards, J. Till, C. Wolstenholme ; J. R. Black, C. R. Fraser, J. Fulton, J. Gordon, R. Millar, A. Rennie ; W. Agnew, J. Clark, G. Dennis, R. Gillespie, H. Keeling, A. S. Nunn, F. Panther, J. Pointon, S. Reid, N. Thomson, J. T. Thompson, E. Turner, H. Woods, J. Yardley.

1927-28 : H. Abbott ; J. Muir, P. Spence ; R. C. Graham, J. Harkins, R. Kingham, D. Richards, J. Till ; J. R. Black, C. R. Fraser, J. Fulton, J. Gordon, J. Lumsden, R. Millar, J. Ramage, J. Reynolds ; J. Banks, A. S. Davies, G. T. Dennis, R. G. Galloway, A. S. Nunn, F. G. Panther, J. Pointon, J. Reid, S. Reid, A. Rennie, J. Sutton, H. Woods, J. Yardley.

1928-29 : H. Abbott, C. S. Banes, P. Spence ; W. Curwen, R. Kingham, R. Graham, B. Harris, R. Haggerty, D. Richards ; J. B. Black, J. Bodsworth, A. Clark, J. Donnelly, A. Forbes, C. R. Fraser, J. Fulton, R. Lumsden, R. Miller, J. Reynolds ; L. Bedford, W. Birch, R. Boylen, A. Craigie, J. Daly, G. T. Dennis, A. Hutchin, A. S. Nunn, A. Rennie, T. Roe, J. Scott, W. Sheldon, W. Vaughan, A. V. Walters, W. Winnell, H. Woods, J. Yardley.

1929-30 : C. S. Banes, G. B. Harford ; F. G. Barber, W. Curwen, R. Kingham, D. Richards, E. Smith, R. Walker ; J. R. Black, A. Clark, C. R. Fraser, J. Fulton, E. W. H. Gale, R. Millar, F. G. Morgan, A. Smeaton ; L. Bedford, W. Birch, R. Boylen, W. Brown, J. Daly, J. Drinnan, A. Harwood, A. Hutchinson, W. McInnes, A. Rennie, W. J. Rickett, W. Sheldon, W. Winnell, H. Woods, J. Yardley.

1930-31 : C. S. Banes, G. B. Harford ; T. Hodgson, R. Kingham, W. Knox, D. Richards, E. Smith ; A. Clark, C. R. Fraser, E. W. H. Gale, A. Hale, H. M'Ginnigle, J. B. Muir, J. E. Page, J. Richmond ; J. Armstrong, W. Brown, R. S. Bryce, F. Dent, A. Heslop, G. M'Nestry, A. Rennie, W. Rickett, J. Slicer, P. Smart, J. Yardley.

1931-32 : G. B. Harford, J. Imrie ; T. Hodgson, R. Kingham, W. Knox, G. C. Wilson ; W. Brown, R. S. Bryce, C. R. Fraser, E. W. Gale, A. Hale, V. Jones, F. W. Kean, H. M'Ginnigle, W. Miller ; A. S. Black, W. Cupit, J. Chapman, A. Heslop, H. Loasby, G. M'Nestry, A. Rennie, D. Rowe, J. Slicer, T. Tait, G. Turner, A. Wales, J. Yardley.

1932-33 : G. B. Harford, J. Imrie ; S. A. Coote, T. Hodgson, A. Ives, R. Kingham, T. S. Mackey ; W. Brown, B. Diaper, C. R. Fraser, A. Hayhurst, F. W. Kean, H. M'Ginnigle ; T. Alderson, W. Corkindale, W. C. Hutchison, A. Mills, A. Nelson, A. Rennie, J. Roberts, D. Rowe, T. Tait, R. S. Weaver, R. Whalley.

1933-34 : G. B. Harford, J. L. Mittell ; S. A. Coote, J. S. Gibson, R. Kingham, T. S. Mackey, H. Reece ; W. Beck, W. Brown, C. R. Fraser, F. W. Kean, H. Lawson, H. M'Ginnigle, J. Rennie, W. Seddon ; S. Anderson, S. Bell, T. Bell, L. Hargreaves, F. Holbeach, D. Hutchison, D. Kirkwood, G. S. Martin, G. Pearson, A. Rennie, T. Tait.

1934-35 : J. L. Coen, G. B. Harford, C. J. Preedy, S. A. Coote, R. Kingham, T. S. Mackey, H. J. Preece, T. S. Smith ; W. Beck, W. Brown, D. Colquhoun, C. R. Fraser, F. W. Kean, G. I. Kidd, H. M'Ginnigle, J. Payne, W. Thayne ; J. Ball, S. Bell, T. Bell, C. Cook, W. Crompton, W. Haggard, H. Hackett, W. Harrison, D. Hutchison, G. S. Martin, L. Murphy, W. Pease, A. Rennie, F. Roberts, J. R. Russell, G. Stephenson, J. T. Taylor.

1935-36 : J. L. Coen, H. Dolman, H. M'Intosh ; H. Booton, S. C. Coote, A. Hubbard, R. Kingham, T. S. Mackey, T. S. Smith ; D. Colquhoun, W. J. Fellowes, C. R. Fraser, W. P. B. Godfrey, H. Gooney, G. I. Kidd, H. M'Ginnigle, J. Nelson, W. Thayne ; H. Andrews, J. Ball, F. E. Beresford, W. G. Boyd, C. Cook, W. Crompton, M. S. Crook, J. Hodge, G. S. Martin, J. Payne, L. Rich, F. Roberts, F. Sloan, G. Stephenson, R. Stevens, J. T. Taylor, G. Turner.

1936-37 : J. L. Coen, H. W. Dolman ; H. Booton, A. Hubbard, T. P. King, R. Kingham, B. R. Lutterloch, T. S. Mackey, T. S. Smith ; C. Childs, W. J. Fellowes, J. Finlayson, W. P. B. Godfrey, W. H. Gooney, L. Hall, G. I. Kidd, H. M'Ginnigle, J. H. Nelson ; J. T. Ball, F. E. Beresford, G. Cox, W. Crompton, E. Hancock, J. Hodge, F. Hogg, F. J. Hosier, G. S. Martin, H. Mills, J. C. Patrick, J. Payne, J. E. Parris, L. T. Rich, F. Roberts, F. Sloan, G. Stephenson, R. F. Stevens.

1937-38 : J. L. Coen, H. W. Dolman, S. Mayberry ; R. Carte, T. P. King, B. R. Lutterloch, T. S. Mackey, T. S. Smith ; C. Childs, G. Dreyer, W. J. Fellowes, J. Finlayson, L. Hall, G. I. Kidd, J. Lewis, J. Loughran, N. V. McKay, J. Nelson, J. Strathie ; E. Connelly, G. Cox, A. G. Dawes, C. Ferguson, H. E. Gager, E. O. Griffiths, E. Hancock, F. Hogg, J. E. Parris, J. Payne, W. J. Redfern, L. T. Rich, F. Roberts, G. H. Stephenson, R. F. Stevens, E. J. Vinall.

The Evening Telegraph—Luton's Own Local Evening

W. Bell & Son

LTD.

Ladies' and
Gentlemen's Tailors



Makers of Fine Clothes since 1889.

22 Chapel St LUTON

● 'PHONE 403 ●

FOOTBALL LEAGUE RECORDS.

POINTS

First Division.—1930-31, Arsenal, 66.
*Second Division.—1920-21, Tottenham Hotspur, 70.
Third Division (South).—1929-30, Plymouth Argyle, 68.
Third Division (North).—1929-30, Port Vale, 67.
* Record for all Divisions.

GOALS FOR

First Division.—1930-31, Aston Villa, 128.
Second Division.—1926-27, Middlesbrough, 122.
Third Division (South).—1927-28, Millwall, 127.
Third Division (North).—1928-29, Bradford City, 128.

GOALS AGAINST

First Division.—1930-31, Blackpool, 125.
Second Division.—1898-99, Darwen, 141.
Third Division (South).—1929-30, Merthyr Town, 135.
Third Division (North).—1927-28, Nelson, 136.

LOWEST POINTS AGGREGATES

First Division.—1889-90, Stoke, 10.
Second Division.—1904-5, Doncaster Rovers, 8.
Third Division (South).—Merthyr Town (1929-30)
and Queen's Park Rangers (1925-26), each 21.
Third Division (North).—1931-32, Rochdale, 11.

INDIVIDUAL GOAL-SCORERS

First Division.—1927-28, Dean (Everton), 60.
Second Division.—1926-27, Camsell (Middlesbro'), 59.
Third Division (South).—1936-37, Payne (Luton), 50.
Third Division (North).—1936-37, Harston (Mansfield), 55.

CUP AND LEAGUE DOUBLES

Cup-winners and League Champions.—1888-89, Preston North End; 1896-97, Aston Villa.
Cup-winners and Promotion from Second Division.—1930-31, West Bromwich Albion.

PROMOTION RECORDS

From Third Division (South) to First Division in successive seasons.—1933-4, 1934-5, 1935-6, Charlton Athletic.

Complete Football Reports in the Evening Telegraph

Comparison of Luton's League Records.

LEAGUE III. (South)

1925-26						1931-32					
Position in Table—7.						Position in Table—6.					
	P.	W.	L.	D.F.	A. P.		P.	W.	L.	D.F.	A. P.
H	..21	16	1	4	60 25 36	H	..21	16	4	1 62 25 33	
A	..21	2	16	3	20 50 7	A	..21	4	11	6 33 45 14	
	42	18	17	7	80 75 43		42	20	15	7 95 70 47	
1926-27						1932-33					
Position in Table—8.						Position in Table—14.					
	P.	W.	L.	D.F.	A. P.		P.	W.	L.	D.F.	A. P.
H	..21	12	0	9	48 19 33	H	..21	12	1	8 60 32 32	
A	..21	3	13	5	20 47 11	A	..21	1	15	5 18 46 7	
	42	15	13	14	68 66 44		42	13	16	13 78 78 39	
1927-28						1933-34					
Position in Table—13.						Position in Table—6.					
	P.	W.	L.	D.F.	A. P.		P.	W.	L.	D.F.	A. P.
H	..21	13	3	5	56 27 31	H	..21	14	4	3 55 28 31	
A	..21	3	16	2	38 60 8	A	..21	7	7	7 28 33 21	
	42	16	19	7	94 87 39		42	21	11	10 83 61 52	
1928-29						1934-35					
Position in Table—7.						Position in Table—4.					
	P.	W.	L.	D.F.	A. P.		P.	W.	L.	D.F.	A. P.
H	..21	16	2	3	64 28 35	H	..21	12	2	7 60 23 31	
A	..21	3	10	8	25 45 14	A	..21	7	9	5 32 37 19	
	42	19	12	11	89 73 49		42	19	11	12 92 60 50	
1929-30						1935-36					
Position in Table—13.						Position in Table—2.					
	P.	W.	L.	D.F.	A. P.		P.	W.	L.	D.F.	A. P.
H	..21	13	4	4	42 25 30	H	..21	13	2	6 56 20 32	
A	..21	1	12	8	22 53 10	A	..21	9	6	6 25 25 24	
	42	14	16	12	64 78 40		42	22	8	12 81 45 56	
1930-31						1936-37					
Position in Table—7.						Position in Table—1.					
	P.	W.	L.	D.F.	A. P.		P.	W.	L.	D.F.	A. P.
H	..21	15	3	3	61 17 33	H	..21	19	1	1 69 16 39	
A	..21	4	12	5	15 34 13	A	..21	8	10	3 34 37 19	
	42	19	15	8	76 51 46		42	27	11	4 103 53 58	

THE LEAGUE : DIVISION II.

1937-38					
Position in Table—12.					
	P.	W.	L.	D.F.	A. P.
H	..21	10	5	6 53 36 26	
A	..21	5	12	4 36 50 14	
	42	15	17	10 89 86 40	

Comparison of Luton's League Records.

LONDON COMBINATION.

*1924-25						1931-32					
Position in Table—12.						Position in Table—12.					
	P.	W.	L.	D.F.	A. P.		P.	W.	L.	D.F.	A. P.
	32	15	15	2	48 62 32	H	..21	16	2	3 66 26 35	
						A	..21	3	18	0 28 71 6	
							42	19	20	3 94 97 41	
*1925-26						1932-33					
Position in Table—14.						Position in Table—19.					
	P.	W.	L.	D.F.	A. P.		P.	W.	L.	D.F.	A. P.
H	..17	11	5	1	52 27 23	H	..23	12	6	5 64 27 29	
A	..17	0	15	2	18 51 2	A	..23	2	17	4 21 56 8	
	34	11	20	3	70 78 28		46	14	23	9 85 83 37	
1926-27						1933-34					
Position in Table—16.						Position in Table—19.					
	P.	W.	L.	D.F.	A. P.		P.	W.	L.	D.F.	A. P.
H	..21	12	2	7	70 28 31	H	..23	13	8	2 50 35 28	
A	..21	3	17	1	20 67 7	A	..23	5	12	6 20 56 16	
	42	15	19	8	90 95 38		46	18	20	8 70 91 44	
1927-28						1934-35					
Position in Table—15.						Position in Table—15.					
	P.	W.	L.	D.F.	A. P.		P.	W.	L.	D.F.	A. P.
H	..21	13	6	2	57 29 28	H	..23	14	7	2 60 31 30	
A	..21	3	15	2	30 66 8	A	..23	4	15	4 24 57 12	
	42	16	21	4	87 95 36		46	18	22	6 84 88 42	
1928-29						1935-36					
Position in Table—15.						Position in Table—8.					
	P.	W.	L.	D.F.	A. P.		P.	W.	L.	D.F.	A. P.
H	..21	13	5	3	48 25 29	H	..23	15	3	5 83 35 35	
A	..21	3	18	1	21 72 0	A	..23	7	15	1 39 74 15	
	42	15	23	4	69 97 34		46	22	18	6 122 109 50	
1929-30						1936-37					
Position in Table—22.						Position in Table—19.					
	P.	W.	L.	D.F.	A. P.		P.	W.	L.	D.F.	A. P.
H	..21	9	7	5	42 30 23	H	..23	12	7	4 58 39 28	
A	..21	2	18	1	25 70 5	A	..23	2	16	5 22 71 9	
	42	11	25	6	67 100 28		46	14	23	9 80 110 37	
1930-31						1937-38					
Position in Table—11.						Position in Table—11.					
	P.	W.	L.	D.F.	A. P.		P.	W.	L.	D.F.	A. P.
H	..21	14	3	4	55 23 32	H	..23	13	5	5 53 24 31	
A	..21	3	14	4	22 55 10	A	..23	5	13	5 32 52 15	
	42	17	17	8	77 78 42		46	18	18	10 85 76 46	

* Note : Seasons 1924-25 and 1925-26 were Southern League

Charnley

and Sons

CONSULTING OPTICIANS

NATIONAL HEALTH INSURANCE

ON THE H.S.A. OFFICIAL LIST OF
★ OPTICIANS ★

11 WELLINGTON STREET
LUTON

'PHONE 1808

Town Players' Appearances Season 1937-38

FOOTBALL LEAGUE : DIVISION II.

J. Finlayson, 39 ; W. J. Fellowes, 38 ; J. Nelson, T. S. Smith, F. Roberts, 37 ; G. H. Stephenson, 35 ; E. J. Vinall, 29 ; J. L. Coen, 26 ; A. G. Dawes, 23 ; J. Payne, 22 ; C. Ferguson, 20 ; T. P. King, 18 ; T. S. Mackey, 17 ; H. W. Dolman, 16 ; J. Loughran, E. Connelly, 9 ; B. R. Lutterloch, W. J. Redfern, E. Hancock, 8 ; E. O. Griffiths, 6 ; J. E. Parris, 5 ; R. Carte, F. Hogg, 4 ; R. Stevens, 3 ; J. Lewis, 2 ; G. Dreyer, J. Strathie, 1.

F.A. CUP

J. L. Coen, W. J. Fellowes, C. Ferguson, J. Finlayson, J. Nelson, F. Roberts, T. S. Smith, G. H. Stephenson, E. J. Vinall, 4 ; A. G. Dawes, T. S. Mackey, 3 ; T. P. King, J. Payne, 1.

LONDON COMBINATION

G. I. Kidd, B. R. Lutterloch, 37 ; R. F. Stevens, 35 ; J. Strathie, 32 ; W. J. Redfern, 31 ; G. Dreyer, 28 ; J. Loughran, 27 ; F. Hogg, 26 ; G. Cox, 24 ; E. Hancock, 23 ; C. Ferguson, 19 ; T. S. Mackey, 16 ; H. W. Dolman, S. Mayberry, L. T. Rich, 15 ; J. L. Coen, T. P. King, 14 ; L. Hall, 13 ; R. Carte, C. Childs, 12 ; H. E. Gager, 10 ; E. O. Griffiths, 8 ; J. E. Parris, R. Campbell, 7 ; J. Lewis, W. J. Fellowes, J. Payne, 2 ; J. Nelson, E. J. Vinall, T. Anderson, H. Watson, N. G. Thorn, E. Bassett, 1.

OTHER MATCHES

C. Childs, 20 ; L. Hall, 17 ; H. E. Gager, 14 ; F. Hogg, L. T. Rich, 10 ; G. Dreyer, J. Strathie, 7 ; R. F. Stevens, 6 ; E. Hancock, 5 ; R. Carte, N. V. McKay, S. Mayberry, 4 ; J. L. Coen, G. Cox, W. J. Redfern, 3 ; H. W. Dolman, C. Ferguson, J. Lewis, 2 ; W. J. Fellowes, J. Finlayson, E. O. Griffiths, T. P. King, J. Loughran, B. R. Lutterloch, T. S. Mackey, J. Nelson, T. S. Smith, 1 ; amateurs, 110.

Football Forecasts every week in the Evening Telegraph

“Furnish at Merchants”

Cash or Deferred Terms

All goods are marked
in plain figures at
COMPETITIVE CASH PRICES
and those prices are the
basis of our **DEFERRED**
TERMS which can be
arranged to suit individual
requirements. ★ ★ ★

F. MERCHANT & SONS,

COMPLETE HOUSE FURNISHERS
AND REMOVAL CONTRACTORS,

8 & 10, Manchester Street,
LUTON.

PHONE 252

EST. 1855

ADVERT. ISSUED BY F. MERCHANT & SONS, LTD.

LUTON RESULTS IN THE F.A. CUP

1926-27	Nov. 27—1st Round:	London Caledonians	H 4—2
	Dec. 11—2nd Round:	Northfleet	H 6—2
	Jan. 8—3rd Round:	Chelsea	A 0—4
1927-28	Nov. 26—1st Round:	Clapton	H 2—2
	Nov. 30—1st Round:	Clapton*	N 4—2
	Dec. 10—2nd Round:	Norwich	H 6—0
	Jan. 14—3rd Round:	Bolton	A 1—2
1928-29	Nov. 24—1st Round:	Southend	H 5—1
	Dec. 8—2nd Round:	Fulham	A 0—0
	Dec. 13—2nd Round:	Fulham*	H 4—1
	Jan. 12—3rd Round:	Crystal Palace	H 0—0
	Jan. 16—3rd Round:	Crystal Palace*	A 0—7
1929-30	Nov. 30—1st Round:	Queen's Park Rgrs.	H 2—3
1930-31	Nov. 29—1st Round:	Clapton Orient	H 2—2
	Dec. 4—1st Round:	Clapton Orient*	A 4—2
	Dec. 13—2nd Round:	Watford	A 1—3
1931-32	Nov. 28—1st Round:	Swindon	A 5—0
	Dec. 12—2nd Round:	Lincoln	A 2—2
	Dec. 16—2nd Round:	Lincoln*	H 4—1
	Jan. 9—3rd Round:	Wolves	H 1—2
1932-33	Nov. 26—1st Round:	Kingstonians	H 2—2
	Nov. 30—1st Round:	Kingstonians*	A 3—2
	Dec. 10—2nd Round:	Stockport County	A 3—2
	Jan. 14—3rd Round:	Barnsley	A 0—0
	Jan. 18—3rd Round:	Barnsley*	H 2—0
	Jan. 28—4th Round:	Tottenham H'spurs	H 2—0
	Feb. 18—5th Round:	Halifax Town	A 2—0
	Mar. 4—6th Round:	Everton	A 0—6
1933-34	Jan. 13—3rd Round:	Arsenal	H 0—1
1934-35	Jan. 12—3rd Round:	Chelsea	A 0—0
	Jan. 16—3rd Round:	Chelsea*	H 2—0
	Jan. 26—4th Round:	Burnley	A 1—3
1935-36	Jan. 11—3rd Round:	West Ham	A 2—2
	Jan. 15—3rd Round:	West Ham*	H 4—0
	Jan. 25—4th Round:	Manchester City	A 1—2
1936-37	Jan. 16—3rd Round:	Blackpool	H 3—3
	Jan. 20—3rd Round:	Blackpool*	A 2—1
	Jan. 30—4th Round:	Sunderland	H 2—2
	Feb. 3—4th Round:	Sunderland*	A 1—3
1937-38	Jan. 8—3rd Round:	Scarborough	A 1—1
	Jan. 12—3rd Round:	Scarborough	H 5—1
	Jan. 22—4th Round:	Swindon Town	H 2—1
	Feb. 12—5th Round:	Manchester City	H 1—3

* Replay. N at Highbury.

For All Sports News, buy the Evening Telegraph

ENGLISH F.A. CUP-TIE ATTENDANCES

Season 1937-38

ROUND 3. January 8, 1938

	Attendance	Receipts
Aldershot v. Notts County	9,000 ..	£845
Arsenal v. Bolton Wanderers	64,244 ..	£6,121
Birmingham v. Blackpool	40,321 ..	£2,435
Bradford v. Newport County	12,000 ..	£745
Bradford City v. Chesterfield	13,088 ..	£820
Brentford v. Fulham	29,867 ..	£2,186
Bury v. Brighton and Hove Albion ..	17,559 ..	£1,160
Charlton Athletic v. Cardiff City ..	34,637 ..	£1,900
Chelsea v. Everton	41,946 ..	£2,689
Crystal Palace v. Liverpool	33,000 ..	£1,850
Derby County v. Stoke City	28,788 ..	£2,721
Doncaster Rovers v. Sheffield United ..	23,280 ..	£1,356
Grimsby Town v. Swindon Town ..	14,000 ..	£860
Huddersfield Town v. Hull City ..	25,442 ..	£1,551
Leeds United v. Chester	37,155 ..	£2,167
Mansfield Town v. Leicester City ..	*15,980 ..	*£1,200
Manchester Utd. v. Yeovil & Petters ..	49,004 ..	£3,035
Middlesbrough v. Stockport County ..	34,757 ..	£2,391
Millwall v. Manchester City	38,110 ..	£2,496
New Brighton v. Plymouth Argyle ..	10,756 ..	£717
Norwich City v. Aston Villa	32,172 ..	£2,096
Notts Forest v. Southampton	24,096 ..	£1,660
Preston N.E. v. West Ham Utd.	30,198 ..	£1,987
Scarborough v. Luton Town	*11,162 ..	£683
Sheffield Wednesday v. Burnley ..	33,006 ..	£1,940
Southend United v. Barnsley	15,236 ..	£1,176
Sunderland v. Watford	35,713 ..	£2,076
Swansea Tn. v. Wolverhampton W. ..	19,300 ..	£2,020
Tottenham H. v. Blackburn Rvs.	35,576 ..	£2,475
Tranmere Rovers v. Portsmouth ..	16,131 ..	£1,392
West Bromwich A. v. Newcastle U. ..	33,932 ..	£1,930
York City v. Coventry City	*13,917 ..	*£838

* Ground record.

ROUND 4. January 22, 1938.

	Attendance	Receipts
Aston Villa v. Blackpool	69,603 ..	£5,164
Barnsley v. Manchester United ..	35,549 ..	£2,338
Bradford v. Stoke City	31,347 ..	£2,077
Brentford v. Portsmouth	*36,718 ..	£2,554
Charlton Athletic v. Leeds United ..	50,516 ..	£2,700
Chesterfield v. Burnley	21,620 ..	£1,297
Everton v. Sunderland	†68,158 ..	†£5,877
Huddersfield Town v. Notts County ..	29,480 ..	£1,734
Luton Town v. Swindon Town	*25,746 ..	£2,003
Manchester City v. Bury	71,937 ..	£4,582
New Brighton v. Tottenham H. ..	13,029 ..	£908
Notts Forest v. Middlesbrough ..	39,055 ..	£2,893
Preston North End v. Leicester City ..	35,000 ..	£2,403
Sheffield United v. Liverpool	50,264 ..	£3,246
Wolverhampton W. v. Arsenal	*61,267 ..	£4,421
York City v. West Bromwich A. ..	†18,795 ..	†£1,425

* Attendance record. † Attendance and receipts records.

ROUND 5. February 12, 1938.

Arsenal v. Preston North End	72,121 ..	*£7,210
Brentford v. Manchester United ..	27,147 ..	£2,021
Charlton Athletic v. Aston Villa ..	*76,031 ..	£3,920
Chesterfield v. Tottenham H.	*30,561 ..	*£2,627
Liverpool v. Huddersfield T.	57,682 ..	£4,107
Luton Town v. Manchester City ..	21,099 ..	£2,873
Sunderland v. Bradford	59,326 ..	£3,932
York City v. Middlesbrough	*23,860 ..	*£2,193

* Ground records.

ROUND 6. March 5, 1938.

Aston Villa v. Manchester City ..	*75,500 ..	*£5,508
Brentford v. Preston North End ..	*37,586 ..	*£2,824
Tottenham H. v. Sunderland	*75,038 ..	*£5,857
York City v. Huddersfield Town ..	*28,123 ..	*£2,735

* Ground records.

SEMI-FINALS. March 26, 1938

Preston N.E. v. Aston Villa (at Bramall Lane)	55,129 ..	*£7,075
Huddersfield Town v. Sunderland (at Blackburn)	47,904 ..	£7,083

* Ground record.

FINAL. April 30, 1938.

At Wembley Stadium.—Preston N.E. v. Huddersfield Town ..	93,357 ..	£25,723
---	-----------	---------

Muscle Users Must Use

ELLIMAN
ATHLETIC RUB PRICE 1/-

For Superb Physical Fitness



Promotes—AGILITY, ELASTICITY, FLEXIBILITY.

Prevents—STIFFNESS and STALENESS.

Guards Against—MUSCLE TEARS and STRAINS.

POPULAR PRICE 1/-

CLUB SIZE 2/6

Of Boots, TIMOTHY WHITES & TAYLORS, and all high-class chemists.

Made by

ELLIMAN, SONS & Co. Ltd., SLOUGH

Joseph L. Coen

(Goalkeeper)

Beginning his fifth season with the club. First played for Clydebank, and afterwards with Glasgow Celtic, Guildford City and Bournemouth. A brilliant 'keeper on his day, he made 26 League appearances last season, and brought his total since coming to Luton to 111. Before signing professional forms he was a time-keeper in a shipyard. Plays golf and tennis. 5ft. 10½in. 12st. 12lb.



Humphrey W. Dolman

(Goalkeeper)

A knee injury kept him out of the game for several weeks last season, but he regained his place in the League side at Easter, and played a big part in Luton's rise in the last few weeks. Won a Northern Section championship medal with Chesterfield, and one for the Southern Section with Luton. Was signed from Bristol City two years last March. Was a furnace man before making football his career. 5ft. 11½in. 13st. 10lb.





Samuel Mayberry

(Goalkeeper)

A young giant who was signed from Gainsborough Trinity midway through the season. A Scot from Bellshill, he is only 20, but stands 6ft. 1in., and weighs 13st. He improved vastly in the latter part of last season, and should be a great asset to the Town in seasons to come. Gainsborough signed him at the end of 1936-37, and he soon drew attention. Was a smelter before turning professional.

Thomas P. King

(Full back)

The player about whom the Directors changed their minds. Was put on the transfer list at the end of the season, but was offered terms at the end of June. A fast, reliable defender. Was troubled by injuries last season, but made 18 appearances in League matches. Born near Grantham, his first professional club was Notts County. He moved to Bournemouth to whom Luton paid a big fee at the end of the season before last. Was a gardener. 5ft. 8½in. 10st. 11lb.



Thomas S. Smith

(Full back)

Fifth season. Was a half back when he came to the club, but was converted into a full back. Born at Higham, near Burnley, he played for Leeds Training College, and turned professional with Nelson, for whom he figured at centre half. Afterwards had a spell with Rochdale, and joined Luton when his scholastic duties brought him south. Plays cricket and lawn tennis. 5ft. 10in. 12st.



Bert. R.

Lutterloch

Third season. Luton paid Aldershot a substantial fee for him as an inside right, but experimented with him as a half back and a full back. Got into the first team last season at left back, and played well. Fast and strong, he will be a strong candidate for a regular place. Played for Tufnell Park as an amateur, then went to France to assist Lille, and returned to England to join Wolves. 5ft. 10in. 11st. 10lb.





R. Carte

(Full back)

He and Mayberry were colleagues at Gainsborough. A stylish player, he needs only experience to develop into a first class defender. Received an early opportunity in the League team, and fulfilled expectations. He is one of the most promising youngsters on the books at the moment. Was born at Denaby, and played for them before going to Gainsborough. A miner before turning professional. 5ft. 10in. 12st. 5lb.

Thomas Dunsmore

(Full-back)

The man everybody hopes is going to solve the big problem that beset the Town during last season. He comes from Hibernian with a big reputation, and it has been stated that he was on the verge of International honours until he was injured last season. Has already made a good impression in the practice matches, and looks like being a very useful acquisition. A Scot, he stands 5ft. 9in., and weighs 12 st.



John Finlayson

(Wing half)

One of the most consistent players on the books. Missed only three League matches last season, and this is his fourth season with the Town. Born at Thornliebank, Scotland, he played at inside right for Motherwell. He went to Cowdenbeath, then Clapton Orient, where he became a half back, then a full back. Soon gained a place in Luton's first team at right half. Is the number one golfer of the Club. 5ft. 11in. 12st.



John Nelson

(Centre half)

Skipper for the last two seasons. Was signed from Wolves three years ago, and has proved one of the Club's best investments. His physique fits him admirably for the centre half position, and he has held up some of the best centre forwards in the country. Before joining Wolves he was with Preston North End, and before that played for Chorley, his birthplace. 6ft. 1½in. 12st. 7lb.





Jack Lewis

(Centre half)

Signed from Wrexham last season, and won a place in the first team at the beginning of March. Was unlucky enough to suffer a severe ankle injury in the second game in the League side, and took some time to recover. Of the third back type, he gives little away in defence, and his big kicking is an asset. Was born just outside Wrexham, and signed for the local club. He soon made the centre half position his own. 6ft. 13st.

James W.

Strathie

(Centre half)

A Scot from Beancross, Falkirk, he did quite well in his first season with Luton. Was experimented with at full back, where he performed creditably, and it may be that this will be his position this season. His kicking is most accurate, and his fearless tackling makes him a very useful man in defence. Falkirk signed him from a junior club, but he came to Luton from St. Bernard's. 6ft. 11in. 12st. 7lb.



Gordon Dreyer

(Centre half)

Proved to be the utility man of the Club last season when he played in every department of the reserve team except goal. Born at Sunderland, and when his junior days were over, signed for Hartlepool United. He left them for Hull City, but rejoined them the season before last, and was regularly in the League side. His only appearance in the Luton first team was at centre half. Was a shipwright. 5ft. 10in. 11st. 12lb.



Joseph Loughran

(Left half)

Acquitted himself well on his nine League appearances last season. Plays great football, and his terrier-like tactics always worry opponents. Birmingham signed him after he left Dudley Training College, and he made 35 League appearances. Gained Junior International Caps against Scotland and Ireland in 1935. Schoolteacher in Luton. All-round cricketer and good swimmer. 5ft. 6in. 11st.



James Wale

(Centre half)

Given a free transfer by Bournemouth at the end of last season, the Town signed Wale on the strength of his display at Luton. His first important club was Dinnington Athletic in the Yorkshire League. He left them to sign professional forms for Wolves, but after a short spell, joined Bournemouth. During the latter part of last season he played at left back. He is only 21, and may be a notable capture. 6ft. 2in. 12st. 4lb..

George I. Kidd

(Left half)

A fine player who has received few chances in the League during his three seasons at Kenilworth-road. He may be seen to more advantage this time. Born at Dundee, he played for Dundee North End before Charlton Athletic signed him as an inside forward. He passed on to Gillingham, and developed as a wing half there. Excels in attack. Has a Scottish Junior International Cap. 5ft. 10in. 12st.



Douglas Gardiner

(Wing half)

One of Neil McBain's close season captures from over the Border. A left-half, he played in Scottish junior football last season for Auchinleck Talbot, and attracted the attention of several scouts. Luton manager spotted him during the summer, and fixed him up immediately. Is only 21, stands 5ft. 8in., and weighs 11st. Was a miner before signing professional forms. Has shown promising form in the practice matches.



Robson Campbell

(Right half)

A young player who showed great promise when playing as an amateur for the Town in the London Combination and London Mid-Week League last season. Was offered terms at the end of the season, and signed as a professional. Is only 18, but plays as if he has had years of experience. Born at Pegswood, but was in business in London, and played in the City Textile League. 5ft. 11in. 11st. 8lb.



Luton Town F.C. 1st XI. Fixtures, 1938-39 - - (Division II.)

Date.	Opponents.	Ground.	Goals		Date.	Opponents.	Ground.	Goals	
			For	Against				For	Against
1938					1939				
Aug. 27	West Bromwich Albion	A			Dec. 31	Norwich City	A		
" 31	Newcastle United	H			1939				
Sept. 3	Norwich City	H			Jan. 7	F.A. Cup (Third Round)			
" 5	Coventry City	A			" 14	Manchester City	H		
" 10	Manchester City	A			" 21	(4) Plymouth Argyle	H		
" 17	Plymouth Argyle	A			" 28	Sheffield United	A		
" 24	Sheffield United	H			Feb. 4	Burnley	H		
Oct. 1	Burnley	A			" 11	(5) Tottenham Hotspur	A		
" 8	Tottenham Hotspur	H			" 18	Bradford	A		
" 15	Bradford	H			" 25	Swansea Town	H		
" 22	Swansea Town	A			Mar. 4	(6) Blackburn Rovers	A		
" 29	Blackburn Rovers	H			" 11	Tranmere Rovers	H		
Nov. 5	Tranmere Rovers	A			" 18	West Ham	A		
" 12	West Ham	H			" 25	(S.F.) Bury	H		
" 19	Bury	A			Apr. 1	Sheffield Wednesday	A		
" 26	Sheffield Wednesday	H			" 7	Southampton	H		
Dec. 3	Fulham	A			" 8	Fulham	H		
" 10	Chesterfield	H			" 10	Southampton	A		
" 17	Millwall	A			" 15	Chesterfield	A		
" 24	West Bromwich Albion	H			" 22	Millwall	H		
" 26	Notts Forest	A			" 29	(F.) Newcastle United	A		
" 27	Notts Forest	H			May 6	Coventry City	H		

The figures in parentheses after the dates are the F.A. Cup rounds.

stick to beer

By

ALL

means

J.W. GREEN'S

J. W. Green, Ltd., The Brewery, Luton.

Telephone : Luton 3131



Charles Ferguson

(Outside right)
Was signed as an inside forward, but became an outside right, and made most appearances in that position. His habit of being in the right place at the right time brought him several goals. A clever player, he will again be a candidate for the position. A Scot, he left Glasgow Benburb for Middlesbrough, and then went to Notts County from whom Luton obtained him. Scottish Junior International. Plays golf. 5ft. 8in. 11st. 2lb.

James Carroll

(Outside right)
The Town's biggest capture of the close season. It is hoped that he will fill adequately a position that has caused a deal of concern. A Scot from Glasgow, his first professional club was Clyde, and he came to England to play for Leicester City 3½ seasons ago. He made nearly 100 appearances for the City, and was a consistent goalscorer. Luton paid a four figure fee for his services 5ft. 7in. 11st.



W. J. Redfern

A Welshman who had to go to Ireland for recognition. After playing for Liverpool Marine, he went to Newry Town, with whom he was a consistent goalscorer at centre forward. After much angling, his transfer was completed last September, and he scored two goals in his first match. His footwork is brilliant, and his accurate marksmanship makes him a forward to be feared. Born at Connah's Quay, near Chester. 5ft. 11½in. 12st.



E. Connelly

(Inside forward)
The Town paid one of their biggest fees ever for his transfer from Newcastle United last March. A clever player, he played some very fine games in the closing weeks of the season. Two-footed and quick, he knows where the goal lies. Is really an inside left, but settled down at inside right. Played for Rosslyn Juniors before going to Newcastle in 1935. Was only 18 when he had his baptism in a Cup-tie. Born Dumbarton. 5ft. 7½in. 10st.





Fred Roberts

(Inside left)

Fifth season. One of the hardest workers in the team and a great club player. Reached double figures in goals for the first time last season. Born at Birmingham and played for Smethwick Highfield and Piggott's Works before signing professional forms for Birmingham. Went into the League team at centre forward almost immediately, but after one season Luton persuaded Birmingham to part with him. Hobbies are bowls, tennis and fishing. 5ft. 8in. 11st. 7lb.

Charles Clark

(Inside forward)

Recruit who comes to Luton after three seasons with Queen's Park Rangers. He is only 21 years of age, but has had plenty of London Combination experience, and has also appeared in the Rangers' League side. While at Shepherd's Bush he played in all five forward positions, but inside right is his proper position. Born at Fleet, for whom he played before turning professional. 5ft. 7in. 11st. 5lb.



Edward J. Vinall

(Centre forward)

Luton paid a big fee for him from Norwich last October. A clever player with a hard shot, he was born near the Aston Villa ground, and played for Birmingham as an amateur. Became a professional with Folkstone, and moved to Sunderland. Norwich signed him in 1933, and for three seasons he was ever present — the only centre forward in the country with such a record. 5ft. 10in. 12st. 3lb.



Hugh J. Billington

(Centre forward)

The Town brought off a smart stroke of business when they persuaded this player to enter the paid ranks. Whilst with Waterlow's he performed some outstanding scoring feats, and last season, in all matches, approached the 100 goals mark. He represented Bedfordshire and the Spartan League several times. He played a big part in Waterlow's two recent championship wins. Born at Ampthill. 5ft. 10in. 11st. 8lb.





Horace Gager

(Inside forward)

He and Stevens are the only Lutonians on the books. Played for Sundale in the Luton League, and then threw in his lot with Vauxhall Motors, for whom he was outstanding. Luton signed him as a professional in the face of competition from other clubs. He showed a great improvement towards the end of last season and will take some keeping out of the League side. Plays cricket for High Town. 5ft. 11in. 12st.

F. Hogg

(Inside forward)

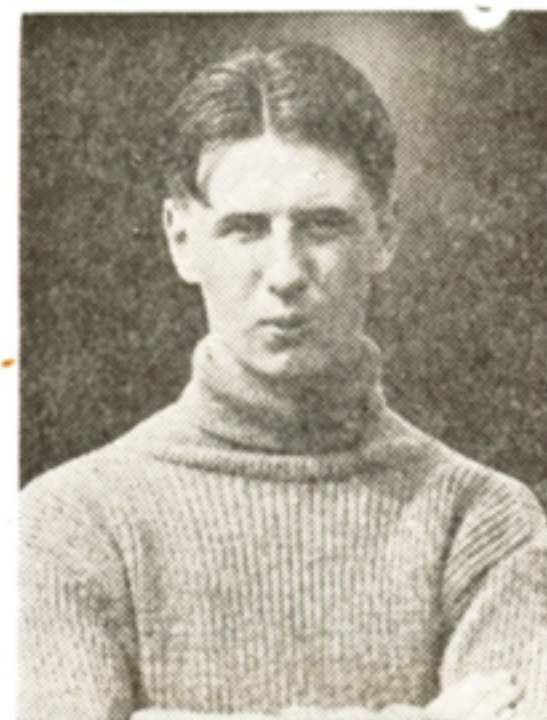
Smallest player on the books, but his lack of inches does not deter him. He is not 21 yet. His ball control is excellent, and his cleverness is beyond dispute. Was born at West Auckland, and gained many honours as a schoolboy. Played for West Auckland Town and was signed after a fine display in M'Ginnigle's benefit match in 1936. Was on a coal lorry before signing professional form. 5ft. 3½in. 10st.



James F. Laing

(Inside forward)

Although only 18 years of age, he has caused quite a stir in Scottish junior circles by the quality of his play. Neil McBain saw him in action for Ashfield Juniors, and did not have to think twice before signing him. Born at Glasgow, he played for King's Park Juniors before throwing in his lot with Ashfield. Although still a youth, he stands 5ft. 11in., and weighs 11st. 3lb. Was a traveller in cycles before joining the paid ranks.



George F. Stephenson

(Outside left)

Fifth season. A real match-winner on his day. Born at Stillington, Durham, and signed professional forms for Durham City. Left them for Aston Villa, and had three seasons at Villa Park before joining Luton. He and Roberts have an ideal understanding. Did not score as many goals as usual last season, but is hoping to figure in the scoring list often this season. 5ft. 9in. 12st.





Ronald F. Stevens

(Outside left)
A local boy, who played for Bromley United. He went to Hitchin, but played in only a few matches before Luton persuaded him to turn professional. Strong and speedy, he has had several outings with the first team, and should add to his tally of appearances this season. Is still young enough to improve appreciably. Was a moulder. 5ft. 7in. 10st. 7lb.

Football! Football!

PHONE YOUR RESULTS
(by 5 p.m. SATURDAY)
TO SECURE PUBLICATION
IN THE

BEDS & HERTS
Evening Telegraph

PHONE 2500 LUTON (6 Lines)

THE DUJON RESTAURANT

87 UPPER GEORGE STREET, LUTON

Entrance THROUGH the Electricity
Showrooms, Opposite the Town Hall

THE MOST ATTRACTIVE
CAFÉ AND RESTAURANT
IN LUTON

Comfort : Quality : Service
Reasonable Charges

DUDENEY & JOHNSTON LTD.

'PHONE 651



Neil McBain

(Manager)

If experience as a player is the best recommendation for managerial office then Neil McBain should take his new club to the top level. Wonderful record as a player earned International caps as a Scottish centre-half; played in First Divisions in Scotland and England; eventually became Manager of Watford, relinquishing the position a year ago. Appointed manager of the Town Club in June, he has already brought to the Club young talent at little cost, and has won the confidence of directors and players. That of supporters must follow.

Archie E. Wickson

(Secretary)

Is now in his tenth season of secretarial work, his third year with the full burden of office. His figure has grown proportionately to the size of his job, and so he is well able to bear it. "One of the best secretaries in the League," was the tribute of the directors at the annual meeting. Takes much interest in local football administration, and is a member of the Council of the Beds F.A., and the Luton District and South Beds League Executive.



Arthur Pembleton

(Trainer)

Takes over as first team trainer after several seasons in charge of the second string. Is fully equipped for the business, for he holds many qualifications as a masseur, and is a credit to himself and the Club. Experience as a player was extensive, and his knowledge of the game not less than his practical knowledge of the "boneless surgery" business, has been an asset to the players and the Club.



Thomas S. Mackey

(Assistant Trainer)

Begins his seventh season in a new capacity. Tom has been a grand servant. Never has there been a player who has given to the Club so heartily and thoroughly the best of which he was capable. Though he could have continued as a player for some years, he has acted wisely in accepting this position as assistant trainer, for it means that with good fortune he will remain in the game he loves for many, many years, and not only to his own profit, but to the welfare of the Club.



Bert Day

(Groundsman)

Has been twenty years with the Club, not only looking after the pitch, but in tending to other departments. In the last two or three seasons the pitch has greatly improved, and the extensions to the stand accommodation have increased the amount of work. With Horace Pakes as co-operator Bert should now see the ground become nearer the standard at which he has aimed so long.

George S. Martin

(Coach)

Sixth year at Luton, and now very much at home, so much so that he is winning bowling honours. George, like the Town manager, wore the colours of Everton, as well as other first-class clubs. Retired from the playing strength last season but one, and now has charge of the saplings. Has plenty of material on which to work, and adequate enthusiasm for the job.



MAC GENTLE LTD.

incorporating

THE LUTON MOTOR TYRE CO.

TYRE FACTORS AND MOTOR AGENTS

DUNLOP
GOODYEAR
FIRESTONE
DAVIES
INDIA

Rebuilts,
etc.

at Lowest
Prices



AGENTS FOR
MORRIS
AUSTIN
STANDARD
AND
FORD

USED CAR
BARGAINS

60 NEW BEDFORD ROAD,

REPAIRS

LUTON

ACCESSORIES

PHONE 1340

USED CARS BOUGHT FOR CASH

Luton Town F.C. 2nd XI. Fixtures,

Date	Opponents	Ground	Goals	
			For	Against
1938				
Aug. 27—	Brighton & Hove AlbionH		
" 29—	MillwallA		
Sept. 3—	Bournemouth & B.A.A		
" 7—	Tottenham HotspurH		
" 10—	WatfordH		
" 17—	Southend UnitedH		
" 19—	Tottenham HotspurA		
" 24—	Queen's Park RangersA		
" 28—	SouthamptonA		
Oct. 1—	ChelseaH		
" 5—	Leicester CityH		
" 8—	Charlton AthleticA		
" 10—	Leicester CityA		
" 15—	FulhamA		
" 22—	BrentfordH		
" 29—	ArsenalA		
Nov. 5—	Clapton OrientH		
" 12—	PortsmouthA		
" 19—	West Ham UnitedH		
" 26—	Northampton TownA		
Dec. 3—	Bristol CityH		
" 10—	Swansea TownA		
" 17—	Crystal PalaceH		
" 24—	Brighton & Hove AlbionA		

The finest motoring value—

FORD 8_{H.P.} SALOON - £120

Economical to run

Ask for a trial run

Luton Motor Co., Ltd., Beech Hill, Luton

PHONE 15

1938-39 - (London Combination)

Date	Opponents	Ground	Goals	
			For	Against
Dec. 26	Southampton	H		
" 31	Bournemouth & B.A.	H		
1939				
Jan. 7	Reading	H		
" 14	Watford	A		
" 21	Southend United	A		
" 28	Queen's Park Rangers	H		
Feb. 4	Chelsea	A		
" 11	Charlton Athletic	H		
" 18	Fulham	H		
" 25	Brentford	A		
Mar. 4	Arsenal	H		
" 11	Clapton Orient	A		
" 18	Portsmouth	H		
" 25	West Ham United	A		
Apr. 1	Northampton Town	H		
" 7	Coventry City	A		
" 8	Bristol City	A		
" 10	Coventry City	H		
" 15	Swansea Town	H		
" 22	Crystal Palace	A		
" 29	Millwall	H		
May 6	Reading	A		

WHEN BUYING A USED CAR insist on a written guarantee!

EVERY USED MOTOR CAR

OFFERED UNDER FIRM GUARANTEE BY

LUTON MOTOR CO., LTD.

Beech Hill PHONE 15 **Luton**

Ask for List—or visit Showrooms

United Counties League, Season 1938-39.

"A" XI Fixtures.

1938	
Aug. 27—	WellingboroughA
Sept. 3—	Stewart and LloydH
" 17—	WisbechA
Oct. 8—	SpaldingH
Nov. 5—	BedfordA
" 12—	St. NeotsH
" 19—	BiggleswadeA
Dec. 3—	Wellingborough (K.O. Comp) ..A
" 24—	RushdenH
" 26—	St. NeotsA
" 31—	Stewart & LloydA
1939	
Jan. 7—	BiggleswadeH
" 21—	DesboroughA
Feb. 4—	KetteringA
" 11—	StamfordH
" 18—	WisbechH
" 25—	RushdenA
Mar. 4—	BedfordH
" 18—	WellingboroughH
Apr. 1—	KetteringH
" 7—	StamfordA
" 8—	SpaldingA
" 15—	DesboroughH

Home matches will be played on the Bedford Town ground

GOAL SCORERS.

FOOTBALL LEAGUE : DIVISION II.

J. Payne, 15 ; E. J. Vinall, 13 ; F. Roberts, 12 ; A. G. Dawes, 11 ; C. Ferguson, 9 ; G. H. Stephenson, 7 ; W. J. Redfern, 6 ; J. Finlayson, E. Connelly, 3 ; T. S. Mackey, E. Hancock, J. E. Parris, 2 ; W. J. Fellowes, E. O. Griffiths, R. Stevens, T. S. Smith, 1. Total : 89.

F.A. CUP

C. Ferguson, 3 ; G. H. Stephenson, E. J. Vinall, 2 ; A. G. Dawes, J. Payne, 1.

LONDON COMBINATION

W. J. Redfern, 19 ; R. F. Stevens, 13 ; G. Cox, 12 ; C. Ferguson, 10 ; L. T. Rich, 6 ; E. Hancock, 5 ; H. E. Gager, E. O. Griffiths, J. Payne, 3 ; L. Hall, G. L. Kidd, J. Loughran, J. E. Parris, T. S. Smith, Crawley (Coventry City), 1.

EASTERN NATIONAL

LUXURY COACHES

AND

OMNIBUSES

AVAILABLE FOR

PRIVATE HIRE

Reasonable Quotations : Reliable Service

A REMINDER

Regular Express Services are operated during the Summer Months from LUTON to BOURNEMOUTH, PORTSMOUTH and SOUTHSEA, MARGATE, YARMOUTH, SOUTHEND, CLACTON and DOVERCOURT. Excursions and Tours to other South and East Coast Resorts. Half-day and Evening Circular Tours.

THE EASTERN NATIONAL OMNIBUS Co., Ltd.

LOCAL OFFICES:

PARK SQUARE, CASTLE ST.,
AND WILLIAMSON STREET,
LUTON (PHONE 1260)

HEAD OFFICES:

NEW WRITTLE STREET,
CHELMSFORD.
PHONE 3431 (THREE LINES)

EN. AD. 4008/27738.

BEDFORDSHIRE COUNTY ASSOCIATION

COUNTY CUP HOLDERS

Senior .. Kempston Rovers Junior .. St. Andrew's
Minor .. Lidlington United Robin Hoods

Hon. Sec. and Treasurer: Mr. Albert E. Ansell, 32,
King Street, Luton.

AFFILIATED LEAGUES AND COMPETITIONS

Bedford County Hospital Cup. A. J. Fielder, Post
Office, Kempston.

Bedford and District League (1919). E. W. Taylor,
3, Westfield Road, Bedford.

Bedford and District Thursday Cup (1908). D. Butler,
89, Salisbury Street, Bedford.

Bedford and District Thursday League (1906). D.
Butler, 89, Salisbury Street, Bedford.

Beds Constabulary A.C. Challenge Cup (1928). P.C.
R. Winser, Police House, Heath and Reach, Leighton
Buzzard.

Biggleswade and District League (1908). A. H. Scott,
62, The Baulk, Biggleswade.

Leighton Football League. W. H. Bonfield, 33,
Vandyke Road, Leighton Buzzard.

Leighton and District Cup (1913). W. H. Bonfield,
33, Vandyke Road, Leighton Buzzard.

Luton and District South Beds Football League.
H. A. Chambers, 160, Hitchin Road, Luton.

Luton Wednesday League. H. T. Hill, 9, Collingdon
Street, Luton.

Luton Wednesday Cup. H. T. Hill, 9, Collingdon
Street, Luton.

North Beds Charity Cup (1907). A. H. Scott, 65, The
Baulk, Biggleswade.

South Midlands League (1922). A. E. Ansell, 32, King
Street, Luton.

Luton Wednesday Junior Challenge Cup. H. T. Hill,
9, Collingdon-street, Luton.

South Beds Minor League. A. E. Ansell, 32, King
Street, Luton.

East Beds Minor League. R. J. Lund, 121, London
Road, Biggleswade.

Bedford Minor League. R. A. Baker, 32, Cavendish
Street, Bedford.

Racing hints by the Chief Whip in Evening Telegraph

JAMES WALKER

GOLDSMITH AND SILVERSMITH LTD.

48 George Street

Luton

•
'PHONE

LUTON

1 6 2 5
•

THE SPORTS PRIZE SPECIALISTS

*Solid Silver Challenge Cups
Electro-plated Cups: Medals
Trophies of all descriptions
at Competitive Prices*

Official Medallist and Sports Prize Suppliers to
the London Transport Sports Association

Special Terms to Bona Fide Sports Clubs
CATALOGUES ON APPLICATION

CLUBS IN BEDFORDSHIRE.

a Secretary's name and address. b Ground.
c Club colours.

Albion Rovers (Luton).—a J. Reader, 66, Wenlock Street, Luton. b No. 7, Bell Close. c Blue shirts, white knickers.

Aley Green Athletic.—a V. S. Banks, 112, Mancroft Road, Aley Green, near Luton. b Aley Green Meadow. c Royal blue shirts with red facings, black knickers.

Arlesey Town.—a R. G. Cheshire, "Cheniston," Arlesey, Beds. b The Bury Meadow. c Light and dark blue shirts (halves), black knickers.

Arnold's Sports (Leighton Buzzard).—a W. T. Woolhead, 7, Mill Road, Leighton Buzzard. b Grovebury Road. c Yellow and blue shirts (quarters), white knickers.

Aspley Guise and Woburn Sands.—a W. E. Jones, 3, Salford Road, Aspley Guise, near Bletchley. b Bedford Road. c Red shirts, white knickers.

Bedford Alexandria Thursday.—a E. G. Lilley, 6, Westbourne Road, Bedford. b Russell Park. c Black and red shirts (quarters), black knickers.

Bedford Catholic.—a J. Breen, 133, Marlborough Road, Bedford. c Green shirts, black knickers.

Bedford Celtic.—a S. H. Proctor, 3, Westbourne Road, Bedford. b Gas Athletic. c Red and white shirts (vertical stripes), black knickers.

Beds Constabulary.—a R. Winsor, Police House, Heath and Reach, Leighton Buzzard. c Black and amber shirts, white knickers.

Bedford Electricity Works.—a H. Blackwell, 7, Gratton Road, Bedford. c Maroon and sky shirts (quarters), white knickers.

Bedford Gas Athletic.—a N. F. Jeffries, 35, Dunville Road, Bedford. b Lawrence Street. c Royal blue shirts, white knickers.

Bedford Igranic.—a S. W. Worker, 5, Church Walk, Kempston, Beds. b Igranic Sports. c (1st XI.) White and green quarters, black knickers. (2nd XI.) Black and green quarters, black knickers.

Bedford Loco.—a H. Southby, 17, York Street, Bedford. b Bedford Park. c Black and white quarters, black knickers.

Bedford Meltis.—a G. E. P. Wilson, 6, Southville Road, Bedford. b Miller Road. c Maroon and white quarters, blue knickers.

Bedford North End.—a A. P. Spindler, 18, Hazelwood Road, Bedford. b Russell Park. c Red shirts, black knickers.

Bedford Post Office.—a D. Butler, 89, Salisbury Street, Bedford. b Russell Park. c Black and white stripes, black knickers.

Bedford Rovers.—a W. Harper, 4, Wellington Street, Bedford. b Bedford Park. c Black and red quarters, black knickers.

Bedford St. Cuthberts.—a S. G. Harris, 45, Dudley Street, Bedford. b Russell Park. c Black shirts with amber V, black knickers.

Bedford Town.—a C. J. Franklin, 8, Windsor Place, St. Cuthberts Street, Bedford. b Off Ford End Road. c White shirts, black knickers.

Biggleswade and District.—a Ivor C. Davies, 8, The Dells, Biggleswade. b Fairfield. c Green shirts, white knickers.

Biggleswade United.—a R. Scott, 36, Rose Lane, Biggleswade. b Fairfield. c Royal blue shirts with white V, white knickers.

Biscot Sports.—a W. S. Adams, 1, Mostyn Road, Luton. b Blundell Road Recreation Ground. c Black and amber squares, black knickers.

Britannia Works (Bedford).—a A. Loosley, 32, St. Leonards Street, Bedford. b Barker's Lane. c Red and white shirts, black knickers.

Bromlea United (Luton).—a W. Fursman, 11, Maidenhall Road, Luton. b Lewsey Farm. c Blue shirts, white facings, white knickers.

Brown and Green's Athletic Club.—a W. G. Payne, 31, Dorset Street, Luton. b Pope's Meadow. c Green with brown facings, black knickers.

Brynwood United (Luton).—a R. W. Day, 23, Claremont Road, Luton. b Stockwood Park. c Green with white facings, white knickers.

Campton.—a 18, Rectory Road, Campton, Beds. b The Recreation Ground. c Black and amber, black knickers.

Carlton United.—a T. H. Gardner, Sandhurst, Carlton, Bedford. b Chellington Church Field. c Blue jerseys with white facings, white knickers.

Chapel Street Wanderers.—a J. Taylor, 71, St. Thomas' Road, Stopsley. b Pope's Meadow. c White, black facings, black knickers.

Chaul End Clarence (Luton).—a E. A. Bangs, Chaul End, Caddington. b Cripps Meadow. c Claret, amber quarters, black knickers.

Christ Church Institute.—a Thomas C. Potts, 24, Napier Road, Luton. b Chaul End Lane. c Black and white halves, black knickers.

Christ Church Juniors.—a G. W. Hurley, 233, Beechwood Road, Luton. b Lewsey Farm. c Claret and sky, white knickers.

Commer Karrier (Luton).—a Mr. H. F. Currant, 60, Flint Hyde, Luton Hoo. b Blundell Road Recreation Ground. c Green shirts, black knickers.

Corinthians (Bedford).—a F. Yorks, 9, Howbury Street, Bedford. b Bedford Park. c White shirts, black knickers.

Cundall Athletic and Sports Club.—a S. C. Jay, c/o Cundall Folding Machine Co., Ltd., Luton. b Ashcroft Road. c Emerald Green with black facings, white knickers.

Dallow Rangers (Luton).—a R. Walker, 32, Dallow Road, Luton. c Blue shirts, white facings, white knickers.

Dickens (Harrold).—a A. O. Lyman, c/o R. Dickens, Ltd., Harrold, Bedford. b "Conegeres." c Blue, white facings, white knickers.

Dulve and Eaton.—a A. Ingle, Eaton Socon, St. Neots. b Opposite "George and Dragon." c Blue and white quarters, blue or white knickers.

Dunstable Argyle.—a W. J. Smith, 11, Kirby Road, Dunstable. b Recreation Ground. c Black and white quarters, black knickers.

Dunstable Early Closers.—a W. Stoten, 34, High Street, Dunstable. b Bull Pond Lane. c Red and white, white knickers.

Dunstable North End.—a L. Harris, 19, Franklin Road, Dunstable. b Northfields Recreation Ground. c Navy and white quarters, black knickers.

Dunstable Rosedale.—a Sydney A. West, 100, Northfields, Dunstable. b Luton Road Recreation Ground. c Red and white, white knickers.

Dunton.—a R. Humberstone, 24, High Street, Dunton. b Millow. c Light blue, navy facings, white knickers.

Elstow Abbey.—a D. S. Copper, 4, West End, Elstow. b The Warren. c White, black knickers.

Flitwick Victory Hall Juniors.—a, Eric Bonner, 47, Chapel Road, Flitwick. b Recreation Ground. c White shirts black knickers.

G.A.S. (Dunstable).—a S. Cadman, Dunstable Gas & Water Company, High Street North, Dunstable. b rear of Gas Works. c White shirts, blue knickers.

Girtford Rovers.—a A. E. Ibbott, 91, London Road, Sandy. b The Drift. c Royal blue, white facings, white knickers.

Goldington.—a H. J. Luff, 46, York Street, Bedford. b Goldington Green. c Emerald and amber, black knickers.

Griffin Athletic (Bedford).—a E. J. Tyrell, 5a, Midland Road, Bedford. b Russell Park. c Blue and white squares, white knickers.

Griffin Athletic Club (Luton).—a P. V. Bonfield, 74, George Street, Luton. b Pope's Meadow. c Blue and white quarters, white knickers.

Great Barford.—a E. C. Pursehouse, School House, Great Barford. b Bridge Farm or Fishers Close. c Red and white, white knickers.

Harrold United.—a E. D. Pakes, Lunfird, Wood Road, Harrold, Bedford. b Conegeres. c White shirts, black knickers.

Harpur United (Bedford).—a E. Toms, 29, Holme Street, Bedford. b Bedford Park. c Red and green halves, black knickers.

Haynes.—a A. Wilsher, 93, Silver End Road, Haynes, Bedford. b North Lane Field. c Black and white stripes, black knickers.

Heath United.—a G. Rolls, 12 Sheepcote Corner, Heath. b Hand-post field. c Scarlet, white facings, white knickers.

Houghton Rangers.—a E. G. Bird, 42, Drury Lane, Houghton Regis, Beds. b The Village Green. c Red with white facings, white knickers.

Hubbards Sports.—a A. E. Diss, 110, Farley Avenue, Luton. b Farley Hill. c White, black facings, black knickers.

Husborne Crawley.—a T. W. Barnes, 89, Church Street, Bletchley. b Village Ground. c Scarlet and amber halves, white knickers.

Ickwell.—a G. Reeks, 11, Warden Road, Ickwell, Biggleswade. b Northill. c White shorts, black knickers.

Interlock.—a R. A. Lingard, 102, Mile Road, Bedford. b Russell Park. c Red and black quarters, white knickers.

Kempston Green End United.—a L. Jeffrey, 7, Green End, Kempston, Bedford. b Green End. c Green with white facings, black knickers.

Keysoe.—a S. G. Chapman, School House, Keysoe, Bedford. b Keysoe Row. c White, blue knickers.

Langford.—a W. Bates, 81, Church Street, Langford, Biggleswade. b Near Vicarage. c Red white knickers.

Leighton Boys' Club.—a L. R. Taylor, 23, Broomhills Road, Leighton Buzzard. b Pages Park. c Royal and amber, black knickers.

Leighton United.—a E. Brinklow, 3, Leighton Road, Leighton Buzzard. b Wayside Sports Ground. c Royal blue, white facings, white knickers.

Leighton Wanderers.—a Gilbert M. Daniells, 99, Stanbridge Road, Leighton Buzzard. b Pages Park. c White, black knickers.

Lidlington United.—a A. Hurst, 73, Church Street, Lidlington. b Thrupp End Farm. c Red, white knickers.

London Brick Co. (Coronation Works).—a W. H. Perkins, c/o Coronation Works, Kempston, Hardwick, Bedford. b Elstow Works. c White, blue knickers.

London Transport (Luton Depot).—a F. L. Visick, 25, Park Street West, Luton. c White, black facings, black knickers.

Luton Amateur.—a T. B. Whalley, 90, Colin Road, Luton. b Stockingstone Road, Luton. c Red and white stripes, black knickers.

Luton Borough Police.—a P. C. W. Jackson, c/o Police Headquarters, Luton. b Stockwood Park, Luton. c Black with red V, white knickers.

Luton Boys Club.—a R. R. Cox, 97, St. Paul's Road, Luton. b Stockwood Park. c Blue and white quarters, black knickers.

Luton Brewery.—a E. Elson, The Brewery, Luton. b Farley Hill. c Green shirts, white facings, white knickers.

Luton Clarence.—a P. Emerton, "Kayric," Ashcroft Road, Stopsley. b Pope's Meadow. c Claret, white facings, black knickers.

Luton Co-op.—a A. Barth, 21, Coniston Road, Limbury. b Stockingstone Road. c Black and amber quarters, black knickers.

Luton Corinthian Athletic.—a A. Draper, 37, Fitzroy Avenue, Luton. b Stockwood Park. c Green and white hoops, black knickers.

Luton Crusaders.—a W. Coleman, 46, Cambridge Street, Luton. b Pope's Meadow. c Red with white sleeves.

Luton Davis Athletic.—a R. H. Sharpe, 272, Biscot Road, Luton. b Dallow Road. c Red and black, black knickers.

Luton Gasworks Athletic.—a Mr. F. Coote, c/o Luton Gasworks, Dunstable Road, Luton. b Dallow Road. c Navy and amber quarters, black knickers.

Luton Hamilton.—a L. E. H. Fox, 15, Hastings Street, Luton. b Bells Close. c Red and white, navy knickers.

Luton Park Street Athletic.—a J. P. Whiting, 51, Harcourt Street, Luton. b Pope's Meadow. c Maroon and white, dark blue knickers.

Luton Postals.—a A. J. E. White, G.P.O., Luton. b Blundell Road. c Red and black quarters, black knickers.

Luton Rangers.—a T. Palmer, 51, Dudley Street, Luton. b No. 5 Pope's Meadow. c Red with white facings, white knickers.

Luton Thistle.—a James Kellett, 74, Oak Road, Luton. c Blue with white knickers.

Luton Town.—a A. E. Wickson, 70/72, Kenilworth Road, Luton. b Kenilworth Road. c White shirts, black knickers.

Luton Wednesday Ridgway.—a W. Hinds, 58, Richmond Hill, Luton. b Farley Hill. c Red and white, white knickers.

Luton Rovers.—a B. E. Bell, 73, Kingsway, Luton. c blue with yellow facings, black knickers.

Lyndale (Luton).—a Richard A. Smith, 123, Strathmore Avenue, Luton. b Pope's Meadow. c Black and amber quarters, black knickers.

Lynton Works.—a C. C. Crouch, Lynton Works, Bedford. b Cosmic Playing Field. c Blue and yellow, blue knickers.

Marley Tile Co., Leighton Buzzard.—a G. Simpson, 38, St. Andrew's Street, Leighton Buzzard. b Bridge Street. c Green and amber, black knickers.

Marston Rovers.—a H. J. Porter, 154, Bedford-road, Marston Morteyne, Beds. b The Bell Field. c Red and white, white knickers.

Marston Shelton.—a G. E. Gillett, 174, Lower Shelton Road, Marston Morteyne, Bedford. b Upper Shelton. c Claret and sky quarters.

Milldale United.—a E. A. Williams, 47, Linden Road, Leagrave. b Lewsey. c Red with white facings, white knickers.

Nalco.—a B. Davies, Borough Treasurer's Department, Town Hall, Luton. c Red, white, blue and black stripes, black knickers.

Norton Rangers (Late Stardale).—a W. Wildman, 14, St. Anne's Road, Luton. b Stockwood Park. c Red with white facings, white knickers.

Oakley Hounds.—a V. Stapleton, Stableyard, The Drive, Oakley, Beds. b Oakley. c Scarlet and white, white knickers.

Parkdale Athletic (Luton).—a B. Edmunds, 20, Millfield Road, Luton. b Pope's Meadow. c Green and white, black knickers.

Pheonix (Bedford).—a C. M. Taylor, 15/17, High Street, Bedford. b Russell Park. c Gold and blue quarters, blue knickers.

Queen's Works (Bedford).—a K. P. Wesley, 29, Old Ford Road, Bedford. b Allen Park. c 1st team Royal blue, white knickers; 2nd team blue and white quarters, white knickers.

Queen's Park Rangers (Bedford).—a L. H. Shardrake, 6, Havelock Street, Bedford. b Cardington ground. c Navy blue and white quarters, white knickers.

R.A.F. Cardington.—a Sgt. C. Mason, No. 2 R.A.F. Depot, Cardington, Bedford. b On Camp. c Dark blue and light blue halves, dark blue knickers.

Royal Air Force, Henlow.—a Officer L/C Association Football Royal Air Force, Henlow Camp. b Henlow Camp. c Red shirts, white knickers.

R.B.S. Sports, Kempston.—a A. Black, 33, Ditman Avenue, The Hoo, Kempston, Bedford. b Off Spring Road. c Scarlet with white facings, white knickers.

Renhold United.—a W. Scott, Three Horse Shoes, Renhold, Beds. b Three Horse Shoes. c Red shirts.

Ridgmont Rovers.—a W. Hirdle, 94, Church Street, Ridgmont. b Sedgenhoe. c White shirts, black facings.

Sandy Albions.—a S. Daniels, 105, St. Neots Road, Sandy. b Recreation Ground, Bedford Road. c Black and white stripes, black knickers.

Shefford Athletic.—a R. T. Johnson, 11, North Bridge Street, Shefford, Beds. b Shefford, Hardwicke. c Sky and claret quarters, black knickers.

Shefford Hardwicke.—a K. A. Dear, 1, High Street, Shefford. b Hardwicke. c Royal blue and orange quarters, black knickers.

Shillington Athletic.—a D. Twydell, 23, Church Street, Shillington. b High Road. c Blue and white, white knickers.

Skefko Athletic.—a R. Reeve, Skefko Works, Luton. b Farley Hill. c Maroon and sky stripes, white knickers.

Spartan.—a E. Butcher, 11, Stratford Road, Luton. b Blundell Road Recreation Ground. c Black and white quarters, black knickers.

St. Andrew's Robin Hoods (Woodside).—a H. Hawkins, 79, Front Street, Slip End, Luton. b Stockwood Park. c Green and white quarters, black knickers.

St. Cuthber's Thursday (Bedford).—a R. Meads, 2, The Grove, Bedford. b Russell Park. c Red and white stripes, black knickers.

Stevington.—a Alan Cox, Court Lane, Stevington, Bedford. b Mill Field. c Blue and amber squares, black knickers.

Stewartby Works.—a J. Law, 192, Stewartby, near Bedford. b Recreation Ground. c Red shirts.

Stondon Rangers.—a H. J. Downing, 101, Station Road, near Henlow Camp, Stondon. b Upper Stondon. c White shirts, black knickers.

Stonehenge Bricks.—a N. Bastow, c/o Stonehenge Bricks Ltd., Mile Tree Road, Leighton Buzzard. b Vandyke Road. c Red shirts with white facings, white knickers.

Stopsley.—a R. Warner, 624, Hitchin Road, Stopsley. b Buttersfield Green. c Red and white quarters, black knickers.

Stopsley United.—a R. G. Toyer, 29, Cannon Lane, Luton. b Buttersfield Green. c Blue and white, black knickers.

Sundale.—a R. Readhead, 34, Lyndhurst, Luton. b Chaul End Lane. c Red with white sleeves, white knickers.

Sundon St. Mary's.—a R. Cooper, 43, Streatley Road, Sundon, Luton. b Harlington Road. c Blue and white

Sutton Rovers.—a F. Birch, 27, Sutton Cross Roads, Sandy. b Sutton Park. c Green and yellow stripes.

Three Counties Hospital (Arlesey).—a Rev. R. B. Secombe, The Chaplaincy, Arlesey, Beds. b Adjoining Hospital. c Green and white, white knickers.

Toddington Rovers.—a Alec Crees, Princess Street, Toddington. b Dropshort Farm. c Black and white stripes.

Totternhoe Athletic.—a L. A. Turvey, Lower End, Totternhoe. b Recreation Ground. c Black and white quarters, black knickers.

Turvey.—a F. Horn, 6, May Road, Turvey, Beds. b New Park. c Green with white facings, white knickers.

Vauxhall Motors (Luton).—a K. Edge, Vauxhall Motors Ltd., Luton. b Adjoining Works. c Blue and gold, black knickers.

Waterlow's (Dunstable).—a W. J. Goodyear, 17, Totternhoe Road, Dunstable. b Main Road, Dunstable.

West End United (Kimpton).—a G. C. Bowler, The Cottage, West End, Kimpton. b Three Horseshoes. c White with blue facings, blue knickers.

Westoning.—a C. Northwood, 19, Church Road, Westoning. b Recreation Ground. c Myrtle green.

Whipsnade Zoo.—a A. Blake, Whipsnade Park, Dunstable. b Whipsnade Park. c Royal blue, white knickers.

Wilstead United.—a Wm. Caves, 1, Council Houses, Wilstead, Beds. b Near Cross Roads. c Blue and amber.

Woburn Athletic.—a J. Deacon, The Tap, Woburn. b Leighton Street, Woburn. c White shirts, black knickers.

Wootton Blue Cross.—a H. Tysoe, 78 Bedford Road, Wootton. b Recreation Ground. c 1st team, Navy blue and sky quarters; 2nd team Light blue and white stripes, navy knickers.

Wrestlingworth.—a B. Duble, 1, Tadlow Road, Wrestlingworth. b Church Meadow. c Claret and amber, white knickers.

Wyboston.—a A. Aplin, Wyboston, Bedford. b Manor Farm, Wyboston. c Red with white V, white knickers.

Wymington.—a G. Wood, 101, Rushden Road, Wymington. b Podington Road. c Red and black, white knickers.

MANFIELD-HOTSPUR



Four widths.
Half-sizes.
(Relative prices, boys.)

18/9

Postage extra.

STRANGE that other good Football Boots have not risen to fame, isn't it? Strange, until you consider how completely MANFIELD-HOTSPUR holds the field... got famous before others had a chance... and satisfies all expectations to-day.

Everybody wears it, in all good matches all over the world.

MANFIELD & SONS, LTD.
376, STRAND, LONDON, W.C. 2

League Championship Tables—Season 1937-38

DIVISION I.					Home			Away			Goals		Ps
	P	W	D	L	W	D	L	W	D	L	F	A	
The Arsenal	42	21	10	11	15	4	2	6	6	9	77	44	52
Wolves	42	20	11	11	11	8	2	9	3	9	72	49	51
Preston N E	42	16	17	9	9	9	3	7	8	6	64	44	49
Charlton A.	42	16	14	12	14	5	2	2	9	10	65	51	46
Middlesboro	42	19	8	15	12	4	5	7	4	10	72	65	46
Brentford ..	42	18	9	15	10	6	5	8	3	10	69	59	45
Bolton Wan.	42	15	15	12	11	6	4	4	9	8	64	60	45
Sunderland	42	14	16	12	12	6	3	2	10	9	55	57	44
Leeds Utd.	42	14	15	13	11	6	3	9	9	10	64	69	43
Chelsea ..	42	14	13	15	11	6	4	3	7	11	65	65	41
Liverpool ..	42	15	11	16	9	5	7	6	6	9	65	71	41
Blackpool ..	42	16	8	18	10	5	6	6	3	12	61	66	40
Derby C. ..	42	15	10	17	10	5	6	5	5	11	66	87	40
Everton ..	42	16	7	19	11	5	5	5	2	14	79	75	39
Hudders. T.	42	17	5	20	11	3	7	6	2	13	55	68	39
Leicester C.	42	14	11	17	9	6	6	5	5	11	54	75	39
Stoke City	42	13	12	17	10	7	4	3	5	13	58	59	38
Birmingham	42	10	18	14	7	11	3	3	7	11	58	62	38
Portsmouth	42	13	12	17	11	6	4	2	6	13	62	68	38
Grimsby T	42	13	12	17	11	5	5	2	7	12	51	68	38
Man. City	42	14	8	20	12	2	7	2	6	13	80	77	36
W. Brom. A	42	14	8	20	10	5	6	4	3	14	74	91	36

DIVISION II.					Home			Away			Goals		Ps
	P	W	D	L	W	D	L	W	D	L	F	A	
Aston Villa	42	25	7	10	17	2	2	8	5	8	73	35	57
Man. Utd...	42	22	9	11	15	3	3	7	6	8	82	50	53
Sheffield U	42	22	9	11	15	4	2	7	5	9	73	56	53
Coventry C	42	20	12	10	12	5	4	8	7	6	66	45	52
Tottenham	42	19	6	17	14	3	4	5	3	13	76	54	44
Burnley ..	42	17	10	15	15	4	2	2	6	13	54	54	44
Bradford ..	42	17	9	16	13	4	4	4	5	12	69	56	43
Fulham ..	42	16	11	15	10	7	4	6	4	11	61	57	43
West Ham U	42	14	14	14	13	5	3	1	9	11	53	52	42
Bury	42	18	5	19	12	3	6	6	2	13	63	60	41
Chesterfield	42	16	9	17	12	2	7	4	7	10	63	63	41
LUTON T	42	15	10	17	10	6	5	5	4	12	89	86	40
Plymouth A	42	14	12	16	10	7	4	4	5	12	57	65	40
Norwich C.	42	14	11	17	11	5	5	3	6	12	56	75	39
Southmton.	42	15	9	18	12	6	3	3	3	15	55	77	39
Blackb'n R	42	14	10	18	13	6	2	1	4	16	71	80	38
Sheffield W	42	14	10	18	10	5	6	4	5	12	49	56	38
Swansea T	42	13	12	17	12	6	3	1	6	14	45	73	38
Newc'le U.	42	14	8	20	12	4	5	2	4	15	51	58	36
Notts. For.	42	14	8	20	13	3	6	2	5	14	47	60	36
Barnsley ..	42	11	14	17	7	11	3	4	3	14	50	64	36
Stockport C	42	11	9	22	8	6	7	3	3	13	43	70	31

DIVISION III. (South)

	DIVISION III. (South)												Goals		
	Home						Away								
	P	W	D	L	W	D	L	W	D	L	F	A	Ps		
Millwall ..	42	23	10	9	15	3	3	8	7	6	83	37	56		
Bristol C. ..	42	21	13	8	14	6	1	7	7	7	68	40	55		
Q.P.R.	42	22	9	11	15	3	3	7	6	8	80	47	53		
Watford ..	42	21	11	10	14	4	3	7	7	7	73	43	53		
Brighton ..	42	21	9	12	15	3	3	6	6	9	64	44	51		
Reading ..	42	20	11	11	17	2	2	3	9	9	71	63	51		
Crystal Pal.	42	18	12	12	14	4	3	4	8	9	67	47	48		
Swindon T	42	17	10	15	12	4	5	5	6	10	49	49	44		
North'ton ..	42	19	7	16	12	4	5	5	5	11	51	57	43		
Cardiff City	42	15	12	15	13	7	1	2	5	14	67	54	42		
Notts C. ..	42	16	9	17	10	6	5	6	3	12	50	50	41		
Southend U	42	15	10	17	12	5	4	3	5	13	70	68	40		
Boscombe ..	42	14	12	16	8	10	3	6	2	13	56	57	40		
Mansfield T	42	15	9	18	12	5	4	3	4	14	63	67	39		
Bristol Rov.	42	13	13	16	10	7	4	3	6	12	46	61	39		
Newport C.	42	11	16	15	9	10	2	2	6	13	43	52	38		
Exeter City	42	13	12	17	10	4	7	3	8	10	57	70	38		
Aldershot ..	42	15	5	22	11	4	6	4	1	16	39	59	35		
Clapton O.	42	13	7	22	10	7	4	3	0	18	42	61	33		
Torquay U.	42	9	12	21	7	5	9	2	7	12	38	73	30		
Walsall ..	42	11	7	24	10	4	7	1	3	17	52	88	29		
Gillingham	42	10	6	26	9	5	7	1	1	19	36	77	26		

DIVISION III. (North)

DIVISION III. (North)													
	Home						Away				Goals		
	P	W	D	L	W	D	L	W	D	L	F	A	Ps
Tranmere R	42	23	10	9	15	5	2	8	5	7	81	41	56
Doncaster R	42	21	12	9	15	3	2	6	9	7	74	49	54
Hull City..	42	20	13	9	11	8	2	9	5	7	80	43	53
Oldham A.	42	19	13	10	16	4	1	3	9	9	67	46	51
Gateshead .	42	20	11	11	15	5	1	5	6	10	84	59	51
Rother'm U.	42	20	10	12	13	6	2	7	4	10	68	56	50
Lincoln C.	42	19	8	15	14	3	4	5	5	11	66	50	46
Crewe Alex.	42	18	9	15	14	3	4	4	6	11	71	53	45
Chester ..	42	16	12	14	13	4	4	3	8	10	77	72	44
Wrexham ..	42	16	11	15	14	4	3	2	7	12	58	63	43
York City	42	16	10	16	11	4	6	5	6	10	70	68	42
Carlisle U.	42	15	8	10	11	4	6	4	4	13	57	67	39
N. Brighton	42	15	8	19	12	5	4	3	3	15	60	61	38
Bradford C.	42	14	10	18	12	6	3	2	4	15	66	69	38
Port Vale ..	42	12	14	16	11	8	2	1	6	14	65	73	38
Southport ..	42	12	14	16	8	8	5	4	6	11	53	82	38
Rochdale ...	42	13	11	18	7	10	4	6	1	14	67	78	37
Halifax T..	42	12	12	18	9	7	5	3	5	13	44	66	36
Darlington	42	11	10	21	10	4	7	1	6	14	54	79	32
Hartlep'ls U	42	10	12	20	10	8	3	0	4	17	53	80	32
Barrow ..	42	11	10	21	9	6	6	2	4	15	41	71	32
Accrg'ton S	42	11	7	24	9	2	10	2	5	14	45	75	29

SCOTTISH LEAGUE—Division I.

	Home				Away				Goals		
	P	W	L	D	W	L	D	F	A	Ps	
Celtic	38	16	0	3	11	4	4	114	42	61	
Hearts	38	16	1	2	10	5	4	90	50	58	
Rangers	38	11	3	5	7	4	8	75	49	49	
Falkirk	38	9	6	4	10	4	5	82	52	47	
Motherwell	38	12	2	5	5	9	5	78	69	44	
Aberdeen	38	12	4	3	3	10	6	74	59	39	
Partick Thistle	38	12	5	2	3	9	7	68	70	39	
St. Johnstone	38	11	4	4	5	11	3	78	81	39	
Third Lanark	38	7	4	8	4	10	5	68	73	35	
Hibernian	38	8	3	8	3	11	5	57	65	35	
Arbroath	38	8	4	7	3	10	6	58	79	35	
Queen's Park	38	6	5	8	5	10	4	59	74	34	
Hamilton A.	38	9	7	3	4	11	4	81	76	33	
St. Mirren	38	11	6	2	3	13	3	58	66	33	
Clyde	38	6	4	9	4	11	4	68	78	33	
Queen of South	38	6	9	4	5	7	7	58	71	33	
Ayr United	38	6	4	9	3	10	6	66	85	33	
Kilmarnock	38	9	5	5	3	12	4	65	91	33	
Dundee	38	10	6	3	3	13	3	70	74	32	
Morton	38	5	13	1	1	16	2	64	127	15	

DIVISION II.

		Home				Away				Goals		
	P	W	L	D	W	L	D	F	A	Ps		
Raith Rovers	34	15	1	1	12	1	4	142	54	59		
Albion Rovers	34	10	2	5	10	4	3	97	50	48		
Airdrieonians	34	12	2	3	9	6	2	100	53	47		
St. Bernards	34	13	3	1	7	6	4	75	49	45		
East Fife	34	13	3	1	6	7	4	104	61	43		
Cowdenbeath	34	11	4	2	6	4	7	115	71	43		
Dumbarton	34	14	0	3	3	12	2	85	66	39		
Stenhousemuir	34	12	3	2	5	9	3	87	78	39		
Dunfermline	34	10	3	4	7	9	1	82	76	39		
Leith Athletic	34	10	3	4	6	10	1	71	56	37		
Alloa	34	8	8	1	3	11	3	78	106	26		
King's Park	34	8	8	1	3	11	3	64	96	26		
East Stirling	34	8	5	4	1	13	3	55	95	25		
Dundee United	34	6	8	3	3	12	2	69	104	23		
Forfar Athletic	34	5	7	5	3	13	1	67	100	22		
Montrose	34	5	7	5	2	12	3	56	88	22		
Edinburgh City	34	6	10	1	1	14	2	77	135	17		
Brechin City	34	2	13	2	3	14	0	53	139	12		

LONDON COMBINATION					Goals		Ps
	P	W	D	L	F	A	
Arsenal	46	28	15	3	116	42	71
Portsmouth	46	25	13	8	94	55	63
Coventry City	46	23	11	12	87	61	57
West Ham United	46	20	12	14	99	74	52
Queen's Park Rangers	46	21	10	15	84	76	52
Tottenham Hotspur	46	20	11	15	87	67	51
Millwall Athletic	46	23	3	20	93	81	49
Chelsea	46	19	11	16	89	73	49
Watford	46	20	9	17	81	91	49
Brentford	46	17	13	16	70	82	47
LUTON TOWN	46	18	10	18	85	76	46
Fulham	46	17	11	18	64	70	45
Crystal Palace	46	18	8	20	89	101	44
Southend United	46	15	13	18	84	87	43
Leicester City	46	16	10	20	79	81	42
Charlton Athletic	46	18	5	23	74	82	41
Bristol City	46	16	9	21	63	81	41
Swansea Town	46	15	10	21	69	76	40
Clapton Orient	46	16	7	23	67	87	39
Northampton Town	46	13	12	21	75	94	38
Bournemouth & Boscombe	46	14	10	22	66	94	38
Southampton	46	14	9	23	82	91	37
Reading	46	13	11	22	80	104	37
Brighton & Hove Albion	46	10	12	24	70	123	32
CENTRAL LEAGUE					Goals		Ps
	P	W	D	L	F	A	
Everton	42	31	8	3	109	44	65
Bolton Wanderers	42	23	10	9	86	48	55
Wolverhampton Wanderers	42	21	16	5	74	65	47
Aston Villa	42	20	17	5	91	80	45
Sheffield Wednesday	42	18	16	8	59	55	44
Sheffield United	42	20	18	4	74	82	44
Burnley	42	16	15	11	71	68	43
Manchester United	42	16	16	10	62	57	42
Leeds United	42	15	15	12	58	59	42
Blackpool	42	15	17	10	66	61	40
Preston North End	42	17	19	6	68	70	40
Huddersfield Town	42	16	18	8	64	66	40
Newcastle United	42	17	19	6	69	72	40
Chesterfield	42	17	19	6	61	79	40
Derby County	42	14	17	11	70	66	39
Blackburn Rovers	42	17	20	5	85	90	39
Bury	42	17	20	5	74	81	39
Manchester City	42	14	17	11	61	67	39
Liverpool	42	13	17	12	52	70	38
West Bromwich Albion	42	11	16	15	69	89	37
Stoke City	42	12	18	12	55	76	36
Birmingham	42	11	23	8	52	85	30

Before and after the Match visit the Sugar Loaf Hotel

King Street, Luton : Phone 1185

*Prices in the Lounge and all Bars
of Luton's Celebrated Free House*

**All celebrated brands of Whisky, including
Johnny Walker, White Label, Black & White
Hollands Gin, Booth's Gin, Brandy, etc.**

(De Kuyper)

Large Glass of
PORT
WHITE
PORT
SHERRY

6^{D.}

WINE
COCKTAILS
PHOSFERINE
WINE
LARGE EGG
WINE

Bottle of

Worthington's I.P.A.
Younger's Scotch Ale
Graham's Lager

Guinness's Extra Stout
(Harp Label)
Lemonade and Claret

ON DRAUGHT

Mitchells & Butler's Best Bitter $\frac{1}{2}$ pt. 3 $\frac{1}{2}$ d.

Worthington's I.P.A. - - $\frac{1}{2}$ pt. 4d.

IN BOTTLE

Watney's or Ind Coope's Ale 4d.

All Beers automatically maintained at the ideal temperature

BEER IS BEST—THE BEST IS HERE



**YOUR
FIRST
FIXTURE**

SHOULD BE WITH

PARTRIDGE'S

The House for Guaranteed

SPORTS GOODS

**Footballs : Jerseys : Knickers : Hose
Shinguards : Boots : Goal Nets : Kit Bags**

Every requisite at lowest prices. Send for
our Winter Sports List today. It is Free
Special Terms to Clubs

H. G. PARTRIDGE & Co.

LUTON'S LEADING SPORTS DEALERS

10-12 CHAPEL STREET : LUTON

PHONE 234