

1939 The Luton News 1940

# FOOTBALL HANDBOOK

2<sup>D</sup>

## FOSTER BROTHERS



FOR  
STYLE AND VALUE  
CLOTHING AND  
OUTFITTING  
FOR MAN, YOUTH and BOY

STYLE	VALUE.
represents the most up-to-date masculine wear, cut & comfort.	stands for solid reliable goodness backed by Foster Bros. over 60 year old reputation.

# FOSTER BROTHERS

Foster Brothers  
Clothing Co., Ltd.  
146 Branches.



22 AND 24, GEORGE STREET,  
LUTON.

5, HIGH STREET SOUTH  
DUNSTABLE.

# **The TERRITORIAL ARMY**

**Join the LUTON units of:**

**The Royal Artillery**

**The Royal Engineers**

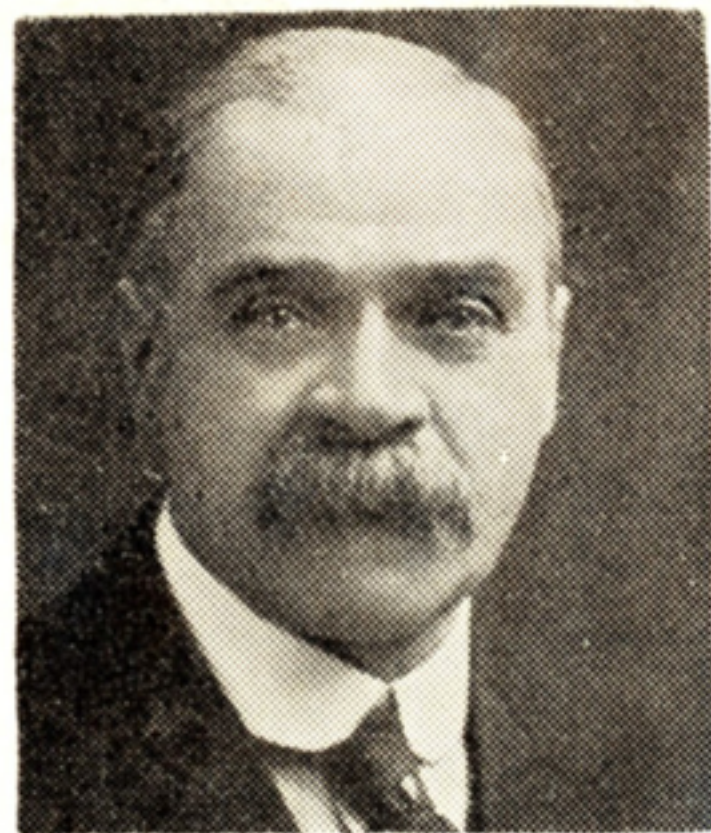
**The Bedfordshire and  
Hertfordshire Regt.**

**The Royal Army  
Service Corps**

Full particulars as to conditions of service  
may be obtained at the

**DRILL HALL, OLD BEDFORD ROAD,  
LUTON**

## **Luton Town Football and Athletic Club LIMITED**



**President:** Mr. Harry Arnold, C.A., J.P.

**Directors:**

**Chairman:** Mr. Charles Jeyes.  
Messrs. E. Hugh Woods (Vice-Chairman), F. J. Andrews,  
A. F. England, Horace S. Hewson, Percy G. Mitchell, C.C.,  
Philip Wright, Henry Richardson, C.C.

**Secretary:** Mr. A. E. Wickson.

**Hon. Medical Officer:** E. J. Crarer, M.B., Ch.B.

**Colours:** Shirts—White Shirts with white straw hat on  
a black background.

**Knickers—**Black knickers.

**Hose—**Black and white hooped stockings.

**Ground:** Kenilworth-road (off Dunstable-road), Luton.  
**Registered Office:** 70 and 72, Kenilworth-road, Luton.

**YES, of course**



**TRY  
STRANGES  
FIRST**

*for*  
**EVERYTHING FOR THE HOME  
AND PERSONAL WEAR**

**ESTABLISHED OVER 100 YEARS**

**STRANGE & SON**  
**34-44 WELLINGTON ST., Luton**

E. Strange & Son, Ltd.

## A MESSAGE FROM THE CHAIRMAN



**EVERY** reasonable individual admits there are phases of football administration that it would be unwise to broadcast. That, however, is not singular to football or any other sport. It applies to every form of life in which there is competition.

---

In the game we love the higher authorities forbid officials to discuss or publish certain matters. It follows therefore that in the domestic sphere of every club there must be similar conditions.

These matters are invariably the causes of discontent, and often involve more or less violent criticism of those responsible for the administration.

Our own club is no exception, and it is obvious that we who hold office are subject to criticism and sometimes to obloquy simply because major considerations compel us to be silent.

Every member of the Luton Town Board of Directors has open to him many avenues of recreation and pleasure free from the anxieties and cares of the administration of the Club, and each of us feels at times that the position is not worth a candle.

Yet always love of the game prevails, and so we carry on, since we recognise that much of the criticism is that of the uninformed.

I am disposed to point this out because of the events at the winding up last season, and what has since transpired. A few supporters will remain irreconcilable perhaps, at least for a few weeks, but in the main I have confidence in the large body of loyal supporters,

In the Board Room I think we can fairly say that every shade of opinion is represented, both as regards the standard of play, and the best methods—according to our resources—of assuring the future of the Club.

---

---

Every supporter wants to see First Division football in Luton, and so does every Director. There are other clubs with similar ambitions and far greater resources, and they start with an advantage, but where there is loyal co-operation in the administration and consistent trust and goodwill from the supporters, the handicap is diminished, and if we all pull together we shall eventually reach our goal.

Already I have expressed the appreciation of the Board of Directors for the manner in which the players and the officials carried out their obligations last season, and I would repeat it here, because the printed word lasts longer.

Of my colleagues on the Board, too, I should like to say that no Chairman could be more generously supported, and whatever differences there may be among us in the matter of detail in administration, we have fullest respect for each other's opinions, knowing that we are all striving for the same objective.

My last word is to the supporters, especially those who occupy the terraces week after week. Believe that we in the Board Room are just like you, striving for the best there is in the game, and that we shall endeavour to retain your goodwill and confidence in this season and as long as we hold office.

*Chas. Jeyes*

---



**Mr. Hugh Woods**

**Vice-Chairman.**—An enthusiastic player in his youth, Mr. Hugh Woods retains his passion for the game, and is now giving to the Town Club all he has in the way of experience. He was a member of the Board several years before the war, and a few years ago he was asked to return, and he was regarded as the "Member for Dunstable." Now Dunstable is represented also by Mr. A. England, and there can be little doubt that the sport of both towns has benefited by the recognition, for the Town Club has a very large Dunstable following. Mr. Woods has been an energetic scout, and has rendered splendid assistance in this direction.

## THE OUTLOOK

**A** YEAR ago we pointed out that the concluding stages of our first season in Second Division football since the promotion showed an unparalleled position, since half the clubs were fighting against the relegation bogey.

Luton Town were then in the thick of the trouble until the last week or two, when they drew clear.

Last season there was a similar state of affairs at the lower end of the table, but there was an unprecedented position at the head, and this time Luton Town were right in the thick of the fray for promotion.

The honour was missed but narrowly, yet we can well say that the position of seventh in the final table was a splendid achievement, of such a character, indeed, as to give us renewed confidence in the officials and the players for the season now at hand.

A bad spell in the first half of the season, when many points were lost at

home, was the spoiling factor, and although there was a grand record in away games, no club can lose many points at home and hope to win through. Sheffield United were the exception last season, but it is unlikely to occur again for a long time.

Moreover, the loss of points at home has an ill effect on the attendances, however well a team plays away, and we hope that in the approaching season the Luton Town team will be able to avoid all such bad spells in their home games, and will also be able to maintain their fine record in away games.

Undoubtedly the struggle this season will be harder than ever, for the affluent clubs will be making their effort to regain the higher grade with renewed vigour, and a few thousands of pounds will not stand in the way.

Luton Town will have to make their challenge without this asset, but if the plan promulgated three years ago by the Board of Directors continues to prosper

as last season the First Division status should not long be delayed.

Since the end of the campaign a few players have left, and also Neil McBain, so that the Club—at the moment of writing—is now without a manager in the ordinary sense of the word. The Directors are carrying on the work, which entails much time and no little worry and anxiety.

Supporters can relieve them of a good deal of trouble if they remain loyal as ever. Unquestionably the Club is splendidly supported considering the resources of population, but the test of any crowd's sportsmanship is the maintenance of support when progress is not achieved, and whatever the new season brings for Luton, it is sincerely to be hoped that the interest will be fully maintained, and, perhaps, considerably increased.

Neither time nor changes adversely affect the popularity of football, and there will be a steady ten thousand who

will support the Club through thick and thin, but what is wanted is that there should be a much greater increase so that the revenue will enable the administration to tackle their problems of playing strength without the constant anxiety of scraping round an empty purse.

One feature of the present administration that should appeal to all sportsmen in the district is the measure of enterprise and watchfulness that has been shown in regard to the nursing of young players, and the acquisition of promising talent from the immediate neighbourhood. Not only should it save the club from heavy expenditure in transfer fees, but it should also attract more and more local people to the ground.

The new programme brings along such strong clubs as Birmingham and Leicester City to take the places of Blackburn Rovers and Sheffield United, while there will not be much loss as

between the inclusion of Barnsley for Tranmere Rovers and Newport County for Norwich City, much though we regret the fall of the East Anglian Club.

The fixture list is nicely arranged, and there will be plenty of good football from the Football Combination games, and particularly if the high standard of last season is maintained by the young players in the Reserves.

A good run in the F.A. Cup Competition would be welcomed, and would be a real boon to the Directors, whose financial commitments are much heavier than are generally recognised by the average supporter.

And now a last word about this handbook. You will have noticed that we have increased the size, and it is now one of the best of its kind in the country.

May you enjoy this season more than any that has preceded, and may the old Club and all connected with it be favoured with the fullest measure of prosperity.

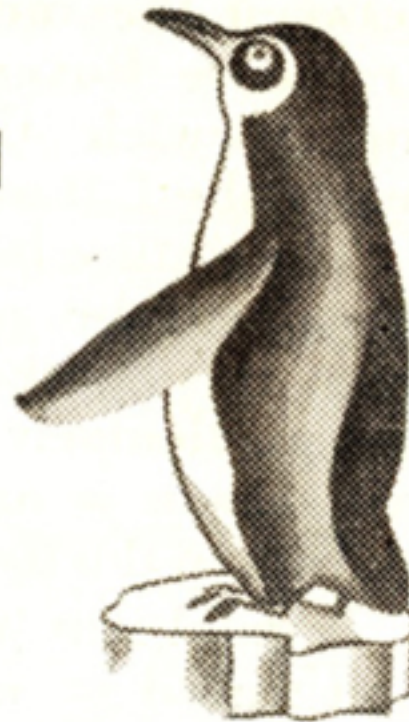
CRUSADER

## AFTER AN . . . ENJOYABLE MATCH

Spend an enjoyable  
hour or so at the

## SUGAR LOAF LEAGRAVE

Where Mr. and Mrs.  
J. Randall will give you  
a cordial welcome and  
where you will find  
genial company.



## SUGAR LOAF LEAGRAVE



Pull-in  
For Cars

Buses Stop  
at Door

Fully  
Licensed

Covered  
Accommo-  
dation in  
Gardens

## Archie E. Wickson

Secretary.—Eleven years ago entered the service of the Town as an office boy, and rose steadily until four years ago he was given the full office of secretary. Each year earns the tributes of the Board of Directors for thoroughness and faithfulness in the discharge of his duties.



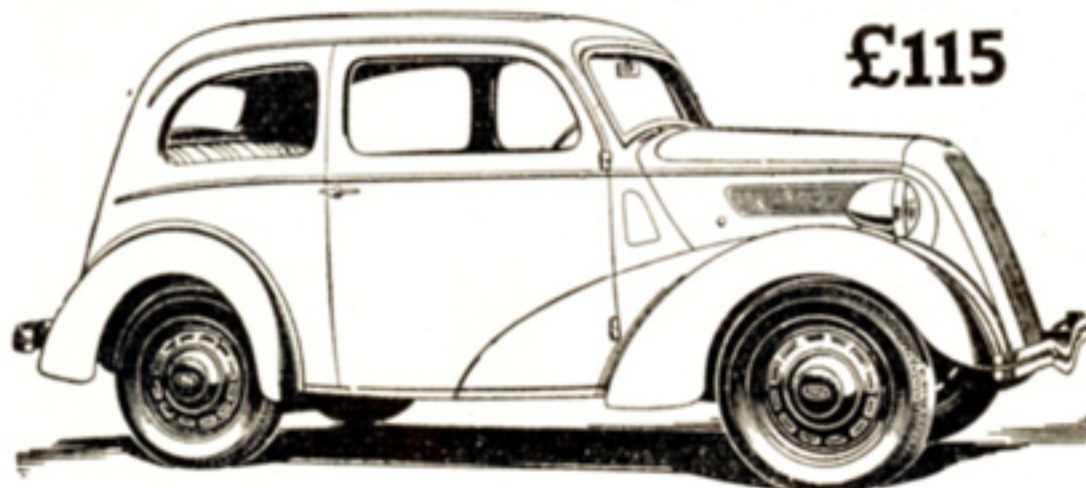
## George S. Martin

Coach.—Born at Glasgow, George forsook his occupation as a sanitary engineer in order to play professional football, and in a long and honourable career, he played for Hamilton Academicals, Hull City, Everton, and Middlesbrough before coming to Luton seven years ago. Concluding his playing career at the end of 1936-37 season, he was made coach last term, and has carried out the duties splendidly.



# FORD "EIGHT"

£115



The Ford "Eight" at £115 sells at £13 less than any other "Eight" Saloon on the market. This initial saving covers the increase in taxation for more than three years. Since the taxation charges do not affect motoring costs this year, by buying a Ford "Eight" now you can ignore the budget for four long years.

## LUTON MOTOR Co. LTD.

BEECH HILL, LUTON

'Phone No. 15

**L**

Take advantage of the Course of Instruction offered by our

**DRIVING TUITION DEPT.**

At Reasonable Cost.

ASK THE LUTON MOTOR Co.

(TELEPHONE 15) FOR FULL DETAILS

## Arthur Pembleton

**Trainer.**—A man of experience as a professional footballer, and had the good sense to equip himself for a career that kept him in the game, for he is a certified masseur, holding diplomas, and still learning that useful art of healing.



## Thos. S. Mackey

**Assistant trainer.**—After serving the club as a wholehearted and earnest player for five seasons, he accepted the position of assistant trainer last season, and the fact that he was "offered" the position was of itself a testimony to his sterling service, for no player has ever given himself more thoroughly to the club.



# HAVE A SWELL TIME



*from*

## LUTON MOTOR Co. Ltd.

The introduction of our A.B.C. system of selling Used Cars has proved a success. We issue a written guarantee, and you are also protected by a Two-Day Money-Back Guarantee.

326 Dunstable Road, Luton. Phone 15

### Bert Day

Groundsman.—As years pass, the work on the ground becomes more and more strenuous, and while players come and go—most of them—the groundsman remains. Bert Day has done his job very thoroughly, but, with the increased status, there has come a demand for increased efficiency, and the work has multiplied enormously, so Bert, who took on the job immediately after the War, now shares the duties with Horace Pakes.



### Horace Pakes

Groundsman. — Horace has given nearly all his life in the service of the Town club, for, as a youngster, he was working in an honorary capacity as trainer for the second eleven. Later he held the position of assistant trainer, and later became first trainer, relinquishing the position to become a valet to the ground last year, and, although it is not yet quite like his own garden, he lives in hope of getting it proportionately pleasant.



**GOAL**

*from*

**EASTAFF'S**

*is*

**CLEANER - WARMER - ECONOMICAL**

Eastaff's carry carefully selected and graded stocks of Coal and Coke for domestic purposes. Perhaps you are wasting money by using the wrong coal. A phone call to 790 will receive our immediate attention.

**A. EASTAFF & SON**

**7a Old Bedford Road  
LUTON**

'Phone 790



**Arthur Bacon**

**Janitor.**—It is said that he also serves who only stands and waits, but Arthur Bacon does not have to wait very long for business when there is a game of any sort at the Town ground. His stalwart figure at the Kenilworth Road entrance, with his bright greeting, are particularly cheering on a cold winter day. For upwards of a quarter of a century Arthur served in the Luton Borough Police Force, reaching the rank of Detective-Sergeant, and although he has now been retired for a matter of a dozen years, he still looks fit enough to serve if required. He has been the door-keeper at Kenilworth Road for several years, and is likely to continue in that capacity for many more.

# BET

with *Luton's Leading*  
**BOOKMAKERS**

**W. H. Lancaster & Sons**  
56 Cambridge Street, Luton

whose slogan is

**STRICT PRIVACY**  
**PROMPT PAYMENT**

Commissions accepted for all  
meetings under Jockey Club,  
N.H. or Pony Turf Club Rules.  
Dog Racing under N.G.R.C.  
Rules. Also at Luton Stadium

**FIXED ODDS FOOTBALL COUPONS ON APPLICATION**

Telephone: Luton

2340, 2341, 2342, 2343, 2344, 2345, 1832, 1350

Telegrams: "Require" Luton

**Credit Accounts Opened on Approved References**

## Comparison of Luton's League Records.

LEAGUE III. (South)

1925-26							1931-32						
Position in Table—7.							Position in Table—6.						
	P.	W.	L.	D.	F.	A. P.		P.	W.	L.	D.	F.	A. P.
H	..21	16	1	4	60	25 36	H	..21	16	4	1	62	25 33
A	..21	2	16	3	20	50 7	A	..21	4	11	6	33	45 14
	42	18	17	7	80	75 43		42	20	15	7	95	70 47
1926-27							1932-33						
Position in Table—8.							Position in Table—14.						
	P.	W.	L.	D.	F.	A. P.		P.	W.	L.	D.	F.	A. P.
H	..21	12	0	9	48	19 33	H	..21	12	1	8	60	32 32
A	..21	3	13	5	20	47 11	A	..21	1	15	5	18	46 7
	42	15	13	14	68	66 44		42	13	16	13	78	78 39
1927-28							1933-34						
Position in Table—13.							Position in Table—6.						
	P.	W.	L.	D.	F.	A. P.		P.	W.	L.	D.	F.	A. P.
H	..21	13	3	5	56	27 31	H	..21	14	4	3	55	28 31
A	..21	3	16	2	38	60 8	A	..21	7	7	7	28	33 21
	42	16	19	7	94	87 39		42	21	11	10	83	61 52
1928-29							1934-35						
Position in Table—7.							Position in Table—4.						
	P.	W.	L.	D.	F.	A. P.		P.	W.	L.	D.	F.	A. P.
H	..21	16	2	3	64	28 35	H	..21	12	2	7	60	23 31
A	..21	3	10	8	25	45 14	A	..21	7	9	5	32	37 19
	42	19	12	11	89	73 49		42	19	11	12	92	60 50
1929-30							1935-36						
Position in Table—13.							Position in Table—2.						
	P.	W.	L.	D.	F.	A. P.		P.	W.	L.	D.	F.	A. P.
H	..21	13	4	4	42	25 30	H	..21	13	2	6	56	20 32
A	..21	1	12	8	22	53 10	A	..21	9	6	6	25	25 24
	42	14	16	12	64	78 40		42	22	8	12	81	45 56
1930-31							1936-37						
Position in Table—7.							Position in Table—1.						
	P.	W.	L.	D.	F.	A. P.		P.	W.	L.	D.	F.	A. P.
H	..21	15	3	3	61	17 33	H	..21	19	1	1	69	16 39
A	..21	4	12	5	15	34 13	A	..21	8	10	3	34	37 19
	42	19	15	8	76	51 46		42	27	11	4	103	53 58

## THE LEAGUE : DIVISION II.

1937-38							1938-39						
Position in Table—12.							Position in Table—7.						
	P.	W.	L.	D.	F.	A. P.		P.	W.	L.	D.	F.	A. P.
H	..21	10	5	6	53	36 26	A	..21	9	11	1	35	39 19
A	..21	5	12	4	36	50 14	H	..21	13	4	4	47	27 30
	42	15	17	10	89	86 40		42	22	15	5	82	66 49

# BENSKIN'S COLNE SPRING ALE

A Naturally Matured  
OLD ALE - -

## Comparison of Luton's League Records.

### LONDON COMBINATION.

*1925-26							1932-33								
Position in Table—14.							Position in Table—19.								
	P.	W.	L.	D.	F.	A.	P.		P.	W.	L.	D.	F.	A.	P.
H	17	11	5	1	52	27	23	H	23	12	6	5	64	27	29
A	17	0	15	2	18	51	2	A	23	2	17	4	21	56	8
	34	11	20	3	70	78	28		46	14	23	9	85	83	37
1926-27							1933-34								
Position in Table—16.							Position in Table—19.								
	P.	W.	L.	D.	F.	A.	P.		P.	W.	L.	D.	F.	A.	P.
H	21	12	2	7	70	28	31	H	23	13	8	2	50	35	28
A	21	3	17	1	20	67	7	A	23	5	12	6	20	56	16
	42	15	19	8	90	95	38		46	18	20	8	70	91	44
1927-28							1934-35								
Position in Table—15.							Position in Table—15.								
	P.	W.	L.	D.	F.	A.	P.		P.	W.	L.	D.	F.	A.	P.
H	21	13	6	2	57	29	28	H	23	14	7	2	60	31	30
A	21	3	15	2	30	66	8	A	23	4	15	4	24	57	12
	42	16	21	4	87	95	36		46	18	22	6	84	88	42
1928-29							1935-36								
Position in Table—15.							Position in Table—8.								
	P.	W.	L.	D.	F.	A.	P.		P.	W.	L.	D.	F.	A.	P.
H	21	13	5	3	48	25	29	H	23	15	3	5	83	35	35
A	21	3	18	1	21	72	9	A	23	7	15	1	39	74	15
	42	15	23	4	69	97	34		46	22	18	6	122	109	50
1929-30							1936-37								
Position in Table—22.							Position in Table—19.								
	P.	W.	L.	D.	F.	A.	P.		P.	W.	L.	D.	F.	A.	P.
H	21	9	7	5	42	30	23	H	23	12	7	4	58	39	28
A	21	2	18	1	25	70	5	A	23	2	16	5	22	71	9
	42	11	25	6	67	100	28		46	14	23	9	80	110	37
1930-31							1937-38								
Position in Table—11.							Position in Table—11.								
	P.	W.	L.	D.	F.	A.	P.		P.	W.	L.	D.	F.	A.	P.
H	21	14	3	4	55	23	32	H	23	13	5	5	53	24	31
A	21	3	14	4	22	55	10	A	23	5	13	5	32	52	15
	42	17	17	8	77	78	42		46	18	18	10	85	76	46
1931-32							1938-39								
Position in Table—12.							Position in Table—4.								
	P.	W.	L.	D.	F.	A.	P.		P.	W.	L.	D.	F.	A.	P.
H	21	16	2	3	66	26	35	H	23	18	3	2	74	17	38
A	21	3	18	0	28	71	6	A	23	6	10	7	40	41	19
	42	19	20	3	94	97	41		46	24	13	9	114	58	57

\* Note: Season 1925-26 Southern League.

## "Furnish at Merchants"

*Cash or Deferred Terms*

All goods are marked  
in plain figures at  
**COMPETITIVE CASH PRICES**  
and those prices are the  
basis of our **DEFERRED**  
**TERMS** which can be  
arranged to suit individual  
requirements. ★ ★ ★

### F. MERCHANT & SONS,

COMPLETE HOUSE FURNISHERS  
AND REMOVAL CONTRACTORS.

8 & 10, Manchester Street,  
LUTON.

PHONE 252

EST. 1855

ADVERT. ISSUED BY F. MERCHANT & SONS, LTD.

## Players' Appearances

Football League: Division II.—Finlayson, 42; Connelly, 41; Stephenson, Dunsmore, 40; Roberts, 37; Redfern, 33; Coen, 31; Billington, 27; King, 26; Dreyer, 22; Nelson, 19; Smith, Loughran, 16; Vinall, 15; Clark, 14; Carroll, 13; Dolman, 10; Ferguson, 9; Burgess, 5; Stevens, Carte, 2; Strathie, Mayberry, 1. Total, 462.

London Combination.—Lutterloch, 46; Gager, 42; Mayberry, Stevens, 31; Vinall, 27; Campbell, 26; Burgess, 25; Smith, 23; Gardiner, 20; Clark, 19; Laing, Lewis, 18; Hogg, 17; Loughran, 16; Billington, Coen, 15; Dreyer, Redfern, 14; King, Nelson, 13; Strathie, 12; Ferguson, Wale, 11; Carte, 9; Carroll, Kidd, 6; Roberts, 5; Stephenson, Goodyear, and an amateur, 1. Total, 506.

## Goal Scorers

Football League: Division II.—Billington, 28; Connelly, 13; Redfern, Stephenson, 12; Clark, 6; Vinall, 5; Ferguson, Finlayson, Roberts, 1; opponents, 2. Total, 81.

London Combination.—Vinall, 22; Billington, Stevens, 14; Ferguson, Gager, Redfern, 11; Clark, 9; Burgess, Laing, 4; Carroll, Roberts, 3; Hogg, Smith, 2; Campbell, Dreyer, Gardiner, Stephenson, 1. Total, 114.

# FOOTBALL NEWS EVERY DAY

IN THE

BEDS & HERTS  
**Evening Telegraph**

**GOOD FURNITURE**

*At Right Prices!*

Established in Luton  
over 50 years

2/6 a week buys  
£20 worth Furniture

**Use Our  
EASY  
PAYMENTS**

Free Delivery in  
Plain Vans

Best Terms, Service  
and Value

**LUTON FURNISHING CO.**  
**PARK SQUARE • LUTON**

NEXT TO EASTERN NATIONAL BUS OFFICES

## LUTON RESULTS IN THE F.A. CUP

1926-27	Nov. 27—1st Round:	London Caledonians	H 4—2
	Dec. 11—2nd Round:	Northfleet	H 6—2
	Jan. 8—3rd Round:	Chelsea	A 0—4
1927-28	Nov. 26—1st Round:	Clapton	H 2—2
	Nov. 30—1st Round:	Clapton*	N 4—2
	Dec. 10—2nd Round:	Norwich	H 6—0
	Jan. 14—3rd Round:	Bolton	A 1—2
1928-29	Nov. 24—1st Round:	Southend	H 5—1
	Dec. 8—2nd Round:	Fulham	A 0—0
	Dec. 13—2nd Round:	Fulham*	H 4—1
	Jan. 12—3rd Round:	Crystal Palace	H 0—0
	Jan. 16—3rd Round:	Crystal Palace*	A 0—7
1929-30	Nov. 30—1st Round:	Queen's Park Rgrs.	H 2—3
1930-31	Nov. 29—1st Round:	Clapton Orient	H 2—2
	Dec. 4—1st Round:	Clapton Orient*	A 4—2
	Dec. 13—2nd Round:	Watford	A 1—3
1931-32	Nov. 28—1st Round:	Swindon	A 5—0
	Dec. 12—2nd Round:	Lincoln	A 2—2
	Dec. 16—2nd Round:	Lincoln*	H 4—1
	Jan. 9—3rd Round:	Wolves	H 1—2
1932-33	Nov. 26—1st Round:	Kingstonians	H 2—2
	Nov. 30—1st Round:	Kingstonians*	A 3—2
	Dec. 10—2nd Round:	Stockport County	A 3—2
	Jan. 14—3rd Round:	Barnsley	A 0—0
	Jan. 18—3rd Round:	Barnsley*	H 2—0
	Jan. 28—4th Round:	Tottenham H'spurs	H 2—0
	Feb. 18—5th Round:	Halifax Town	A 2—0
	Mar. 4—6th Round:	Everton	A 0—6
1933-34	Jan. 13—3rd Round:	Arsenal	H 0—1
1934-35	Jan. 12—3rd Round:	Chelsea	A 0—0
	Jan. 16—3rd Round:	Chelsea*	H 2—0
	Jan. 26—4th Round:	Burnley	A 1—3
1935-36	Jan. 11—3rd Round:	West Ham	A 2—2
	Jan. 15—3rd Round:	West Ham*	H 4—0
	Jan. 25—4th Round:	Manchester City	A 1—2
1936-37	Jan. 16—3rd Round:	Blackpool	H 3—3
	Jan. 20—3rd Round:	Blackpool*	A 2—1
	Jan. 30—4th Round:	Sunderland	H 2—2
	Feb. 3—4th Round:	Sunderland*	A 1—3
1937-38	Jan. 8—3rd Round:	Scarborough	A 1—1
	Jan. 12—3rd Round:	Scarborough	H 5—1
	Jan. 22—4th Round:	Swindon Town	H 2—1
	Feb. 12—5th Round:	Manchester City	H 1—3
1938-39	Jan. 7—3rd Round:	Liverpool	A 0—3

\* Replay. N at Highbury.



# YOUR FIRST FIXTURE

SHOULD BE WITH

## PARTRIDGE'S

*The House for Guaranteed*

## SPORTS GOODS

**Footballs : Jerseys : Knickers : Hose  
Shinguards : Boots : Goal Nets : Kit Bags**

Every requisite at lowest prices. Send for  
our Winter Sports List today. It is Free

**Special Terms to Clubs**

## H. G. PARTRIDGE & Co.

*LUTON'S LEADING SPORTS DEALERS*

**10-12 CHAPEL STREET : LUTON**

**PHONE 234**

## CUP FINAL "GATES" SINCE 1900.

1900—	Crystal Palace	Bury v. Southampton	....	68,945
1901—	"	Tottenham H. v. Sheffield U.		110,820
1902—	"	Sheffield U. v. Southampton		76,914
1903—	"	Bury v. Derby County	....	63,102
1904—	"	Manchester C. v. Bolton W.		61,374
1905—	"	Aston Villa v. Newcastle U.		101,117
1906—	"	Everton v Newcastle U.	..	75,609
1907—	"	Sheffield Wed. v Everton	..	84,584
1908—	"	Wolverh'pt'n v. Newcastle U.		74,967
1909—	"	Manchester U. v Bristol C.		71,401
1910—	"	Newcastle U. v Barnsley	..	77,747
1911—	"	Eradford C. v. Newcastle U.		69,098
1912—	"	Barnsley v. West Brom. A.		64,556
1913—	"	Aston Villa v Sunderland	..	120,081
1914—	"	Burnley v. Liverpool	.....	74,093
1915—	Manchester..	Sheffield U. v. Chelsea	....	49,557
1920—	Chelsea	Aston Villa v. Huddersfield		50,018
1921—	"	Tottenham v. W'verhampton		72,805
1922—	"	Huddersfield v. Preston N.E.		53,710
1923—	Wembley....	Bolton W. v. West Ham	..*	126,047
1924—	"	Newcastle U. v. Aston Villa		105,000
1925—	"	Sheffield U. v. Cardiff C.	..	90,000
1926—	"	Bolton W. v. Manchester C.		91,447
1927—	"	Cardiff City v. Arsenal	....	91,206
1928—	"	Blackb'n R. v. Huddersfield		92,041
1929—	"	Bolton W. v. Portsmouth	..	92,576
1930—	"	Arsenal v. Huddersfield T.	..	92,488
1931—	"	West Brom. v. Birmingham		92,406
1932—	"	Newcastle U. v. Arsenal	....	92,298
1933—	"	Everton v. Manchester C.	..	92,950
1934—	"	Manchester C v. Portsmouth		93,258
1935—	"	Sheffield W. v. West Brom. A.		93,376
1936—	"	Arsenal v. Sheffield U.	....	93,384
1937—	"	Sunderland v. Preston N.E.		93,495
1938—	"	Preston N.E. v. Huddersfield		93,497
1939—	"	Portsm'th v. Wolverhampton		99,370

\*Official figures. Crowd broke in.

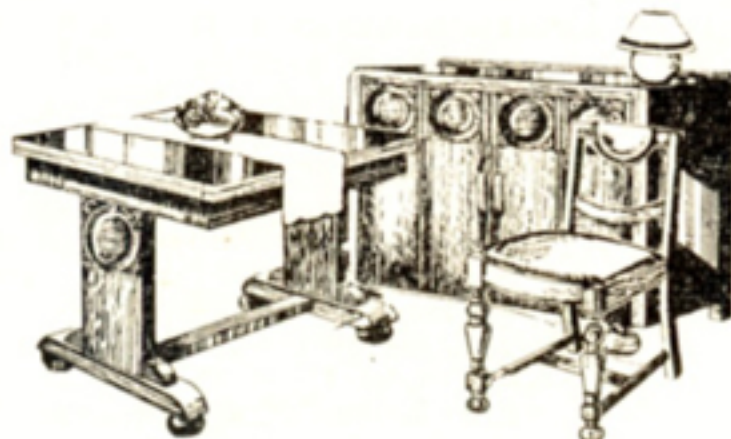
# SIDNEYS

(LUTON) LIMITED

## OUR RECORD OF SERVICE

During the years since our establishment, **SIDNEYS** have become increasingly the house to which the discerning purchaser in need of good quality **FURNITURE** at a reasonable cost, is turning.

We are now able to offer in addition, the service of **HIGH CLASS Removals and storage, of experienced French-polishing and Repairs-experts, and the advice of practical people on any furnishing problem.**



**IF IT'S FURNITURE! IF IT'S A REMOVAL!  
IF IT'S ANY FURNISHING QUESTION!  
LET US ADVISE YOU**

*"SAVE WORRY and SAVE MONEY"*

AT

**SIDNEYS** 'Phone 2437

**36a, LEAGRAVE ROAD, LUTON**

## F.A. Cup Winners

- 1871-2 — Wanderers beat Royal Engineers (1—0)
- 1872-3 — Wanderers beat Oxford University (2—0)
- 1873-4 — Oxford University beat Royal Engineers (2—0)
- 1874-5 — Royal Engineers beat Old Etonians (2—0, after a draw 1—1)
- 1875-6 — Wanderers beat Old Etonians (3—0, after a draw 0—0)
- 1876-7 — Wanderers beat Oxford University (2—0) after extra half-hour
- 1877-8 — Wanderers beat Royal Engineers (3—1)
- 1878-9 — Old Etonians beat Clapham Rovers (1—0)
- 1879-80 — Clapham Rovers beat Oxford University (1—0)
- 1880-1 — Old Carthusians beat Old Etonians (3—0)
- 1881-2 — Old Etonians beat Blackburn Rovers (1—0)
- 1882-3 — Blackburn Olympic beat Old Etonians (2—1) after extra half-hour
- 1883-4 — Blackburn Rovers beat Queen's Park (Glasgow) (2—1)
- 1884-5 — Blackburn Rovers beat Queen's Park (Glasgow) (2—0)
- 1885-6 — Blackburn Rovers beat West Brom. Albion (2—0, after a draw 0—0)
- 1886-7 — Aston Villa beat West Bromwich Albion (2—0)
- 1887-8 — West Brom. A. beat Preston North End (2—1)
- 1888-9 — Preston N.E. beat Wolverhampton Wdrs. (3—0)
- 1889-90 — Blackburn Rvrs beat Sheffield Wednesday (6—1)
- 1890-1 — Blackburn Rovers beat Notts County (3—1)
- 1891-2 — West Bromwich Albion beat Aston Villa (3—0)
- 1892-3 — Wolverhampton Wanderers beat Everton (1—0)
- 1893-4 — Notts County beat Bolton Wanderers (4—1)
- 1894-5 — Aston Villa beat West Brom. Albion (1—0)
- 1895-6 — Sheffield Wed. beat Wolverhampton W. (2—1)
- 1896-7 — Aston Villa beat Everton (3—2)
- 1897-8 — Notts. Forest beat Derby County (3—1)
- 1898-9 — Sheffield United beat Derby County (4—1)
- 1899-1900 — Bury beat Southampton (4—0)
- 1900-01 — Tottenham H. beat Sheffield U. (3—1, after a draw 2—2)
- 1901-2 — Sheffield U. beat Southampton (2—1, after a draw 1—1)

*The*  
**OLD GEORGE**  
**HOTEL**  
**SILSOE**

• *Fully Licensed*

• *Residential*

**LUNCHEONS**  
**DINNERS**

etc.

Telephone Silsoe 18

**F.A. CUP WINNERS—continued.**

- 1902-3 — Bury beat Derby County (6—0)  
 1903-4 — Manchester City beat Bolton Wanderers (1—0)  
 1904-5 — Aston Villa beat Newcastle United (2—0)  
 1905-6 — Everton beat Newcastle United (1—0)  
 1906-7 — Sheffield Wednesday beat Everton (2—1)  
 1907-8 — Wolverhampton W. beat Newcastle Utd. (3—1)  
 1908-9 — Manchester United beat Bristol City (1—0)  
 1909-10 — Newcastle United beat Barnsley (2—0, after a draw 1—1)  
 1910-11 — Bradford City beat Newcastle United (1—0, after a draw 0—0)  
 1911-12 — Barnsley beat West Brom. A. (1—0, after a draw 0—0)  
 1912-13 — Aston Villa beat Sunderland (1—0)  
 1913-14 — Burnley beat Liverpool (1—0)  
 1914-15 — Sheffield United beat Chelsea (3—0)  
 1915-16, 1916-17, 1917-18, 1918-19 — No competition  
 1919-20 — Aston Villa beat Huddersfield Town (1—0)  
 1920-21 — Tottenham H. beat Wolverhampton W. (1—0)  
 1921-22 — Huddersfield Town beat Preston N.E. (1—0)  
 1922-23 — Bolton Wanderers beat West Ham (2—0)  
 1923-24 — Newcastle United beat Aston Villa (2—0)  
 1924-25 — Sheffield United beat Cardiff City (1—0)  
 1925-26 — Bolton Wanderers beat Manchester City (1—0)  
 1926-27 — Cardiff City beat Arsenal (1—0)  
 1927-28 — Blackburn Rovers beat Huddersfield Tn. (3—1)  
 1928-29 — Bolton Wanderers beat Portsmouth (2—0)  
 1929-30 — Arsenal beat Huddersfield Town (2—0)  
 1930-31 — West Bromwich A. beat Birmingham (2—1)  
 1931-32 — Newcastle United beat Arsenal (2—1)  
 1932-33 — Everton beat Manchester City (3—0)  
 1933-34 — Manchester City beat Portsmouth (2—1)  
 1934-35 — Sheffield Wed. beat West Bromwich A. (4—2)  
 1935-36 — Arsenal beat Sheffield United (1—0)  
 1936-37 — Sunderland beat Preston North End (3—1)  
 1937-38 — Preston North End beat Huddersfield Tn. (1—0)  
 1938-39 — Portsmouth beat Wolverhampton Wndrs. (4—1)

# LARGE STOCKS of **TIMBER!**

## CABINET & TABLE LEGS

Turned and Twisted - - - from 1/9 set of 4

## WIDE RANGE OF PLYWOODS

1/8" to 3/4" Thick - In Oak, Mahogany, Walnut,  
Birch and Alder

**EVERYTHING** for the  
**HANDYMAN** at

# **BRANDHAM'S**

200 Leagrave Rd., 'Phone Luton 1634

Complete Range of **ROBBIALAC** Painting Products.

## GLASS for

Greenhouses, Windows, Pictures, etc. Cut to any size.

Agent for

**CARTER'S & COOPER'S TESTED SEEDS**

ALL KINDS OF FERTILIZERS

**PROMPT DELIVERY**  
THROUGHOUT THE DISTRICT

# National Cup-Tie Dates, 1939-40

## FOOTBALL ASSOCIATION CUP COMPETITION

### Qualifying Competition

Extra Prelimy. Rd..Sept. 2	Second Round....Oct. 14
Preliminary Rd...Sept. 16	Third Round....Oct. 28
First Round.....Sept. 30	Fourth Round....Nov. 11

### Competition Proper

First Round.....Nov. 25	Fifth Round.....Feb. 17
Second Round....Dec. 9	Sixth Round.....Mar. 9
Third Round.....Jan. 13	Semi-Finals .....April 6
Fourth Round....Jan. 27	Final Tie.....April 27

## F.A. AMATEUR CUP COMPETITION

### Qualifying Competition

Extra Prelimy. Rd..Sept. 9	Second Round....Oct. 21
Preliminary Rd...Sept. 23	Third Round....Nov. 4
First Round.....Oct. 7	Fourth Round....Nov. 18

### Competition Proper

First Round.....Jan. 20	Fourth Round....Mar. 16
Second Round....Feb. 3	Semi-Finals .....Mar. 30
Third Round.....Feb. 24	Final Tie.....April 20

## SCOTTISH F.A. CUP COMPETITION

### Scottish Qualifying Cup

First Round.....Sept. 16	Fourth Round....Oct. 28
Second Round....Sept. 30	Final Tie (South)..Nov. 11
Third Round.....Oct. 14	5th Round (North)..Nov. 11
	Final Tie (North)..Nov. 25

### SCOTTISH CUP

First Round.....Jan. 20	Fourth Round....Mar. 9
Second Round....Feb. 10	Fifth Round.....Mar. 30
Third Round.....Feb. 24	Final Tie.....April 20

★ **THE LEAGUE FIXTURES** appearing  
in this Handbook are the Copyright of the  
Football League Ltd., and reproduced  
by their permission.

# ROGERS MANNINGS & TEARLE Ltd.

WHOLESALE  
TOBACCONISTS  
— AND —  
CONFECTIONERS

*Suppliers to the  
Licensed Victuallers' Trade*

"EVERYTHING THAT YOU WANT."

PROMPT AND EFFICIENT  
SERVICE GUARANTEED.

*Sole Agents in Beds., Herts. and Cambs. for*

**AUTOSCOR DARTS SCORER**

Demonstration arranged anywhere at any time without obligation

*"It's a boon to your customers"!*

**49, PARK STREET WEST**  
**LUTON**

PHONE  
2630

PHONE  
2630

## Leading Marksmen

### THE LEAGUE—Division I.

	Rep.	League	Cup-ties	Total
Lawton, Everton .....	9	34	4	47
Westcott, W'hamton .....	—	32	11	43
*Cheetham, Brentford ..	—	30	5	35
Fenton, Middlesbrough ..	—	34	1	35
†Dodds, Blackpool .....	—	28	1	29
Steele, Stoke City .....	—	26	1	27
‡Howe, Grimsby Town ..	—	20	6	26

### THE LEAGUE—Division II.

	Rep.	League	Cup-ties	Total
Billington, Luton Town ..	—	28	—	28
Rooke, Fulham .....	—	20	6	26
Hunt, Sheffield Wed. ....	—	24	1	25
Lyon, Chesterfield .....	—	22	2	24
Clarke, Blackburn R. ....	—	21	2	23
Herd, Manchester City ..	—	20	2	22
§Hubbard, West Ham U. ..	—	20	2	22

### THE LEAGUE—Division III. (Southern Section)

	Rep.	League	Cup-ties	Total
Alsop, Walsall .....	—	26	6	32
Morton, Swindon Tn. ....	—	28	3	31
McPhee, Reading .....	—	25	1	26
Chadwick, Ipswich Tn. ....	—	19	5	24
Ray, Aldershot .....	—	21	3	24
Bowl, Exeter City .....	—	23	—	23
Curran, Bristol Rvrs. ....	—	21	1	22

### THE LEAGUE—Division III. (Northern Section)

	Rep.	League	Cup-ties	Total
Hunt, Carlisle Utd. ....	—	33	—	33
Patrick, Southport .....	—	27	6	33
Bramham, Rotherham ..	—	30	1	31
Wynn, Rochdale .....	—	29	1	30
Widdowfield, Halifax Tn. ..	—	23	6	29
Pendergast, Chester ....	—	27	2	29
Asquith, Barnsley .....	—	28	—	28

### SCOTTISH LEAGUE—Division I.

	Rep.	League	Cup-ties	Total
Venters, Rangers .....	—	34	2	36
Wilson, Hamilton Acads. ..	—	30	3	33
Dewar, Third Lanark ..	—	25	7	32
Wallace, Partick Thistle ..	—	28	2	30
Martyn, Clyde .....	2	21	7	30
Walker, Hearts .....	4	22	2	28
Black, Hearts .....	3	20	5	28
Garrett, Hearts .....	—	17	11	28

\* Includes 27 goals with Queen's Park Rangers.

† Includes 19 with Sheffield United. ‡ Includes 5 with Manchester City. § Includes 21 with Hull City.

|| Includes 2 with Ipswich Town.

# **PLOWMANS LIMITED**

*for*

## **VAUXHALL Cars**

**SALES & SERVICE**

**HITCHIN ROAD  
Luton, Beds.**

PHONE 2226/7

## **Football League Records.**

First Division.—1930-31, Arsenal, 66.

\*Second Division.—1920-21, Tottenham Hotspur, 70.

Third Division (South).—1929-30, Plymouth Argyle, 68.

Third Division (North).—1929-30, Port Vale and  
Barnsley (1938-39), 67.

\* Record for all Divisions.

### **LOWEST POINTS AGGREGATES**

First Division.—1889-90, Stoke, 10.

Second Division.—1904-5, Doncaster Rovers, 8.

Third Division (South).—Merthyr Town (1929-30)  
and Queen's Park Rangers (1925-26), each 21.

Third Division (North).—1931-32, Rochdale, 11.

### **GOALS FOR**

First Division.—1930-31, Aston Villa, 128.

Second Division.—1926-27, Middlesbrough, 122.

Third Division (South).—1927-28, Millwall, 127.

Third Division (North).—1928-29, Bradford City, 128.

### **GOALS AGAINST**

First Division.—1930-31, Blackpool, 125.

Second Division.—1898-99, Darwen, 141.

Third Division (South).—1929-30, Merthyr Town, 135.

Third Division (North).—1927-28, Nelson, 136.

### **INDIVIDUAL GOAL-SCORERS**

First Division.—1927-28, Dean (Everton), 60.

Second Division.—1926-27, Camsell (Middlesbro'), 59.

Third Division (South).—1936-37, Payne (Luton), 50.

Third Division (North).—1936-37, Harston (Mans-  
field), 55.

### **CUP AND LEAGUE DOUBLES**

Cup-winners and League Champions.—1888-89, Preston  
North End; 1896-97, Aston Villa.

Cup-winners and Promotion from Second Division.—  
1930-31, West Bromwich Albion.

### **PROMOTION RECORDS**

From Third Division (South) to First Division in  
successive seasons.—1933-4, 1934-5, 1935-6, Charlton  
Athletic.

*Before and after  
the Match visit the*

# Sugar Loaf Hotel

King Street, Luton : Phone 1185

*Prices in the Lounge and all Bars  
of Luton's Celebrated Free House*

**All celebrated brands of Whisky, including  
Johnny Walker, White Label, Black & White  
Hollands Gin, Booth's Gin, Brandy, etc.**

(De Kuyper)

Large Glass of  
PORT  
WHITE  
PORT  
SHERRY

**6 D.**

WINE  
COCKTAILS  
PHOSFERINE  
WINE  
LARGE EGG  
WINE

Bottle of  
Worthington's I.P.A.  
Younger's Scotch Ale  
Graham's Lager

Guinness's Extra Stout  
(Harp Label)  
Lemonade and Claret

## Do You Know—

That the first international soccer match was played in 1872 between England and Scotland and ended in a goalless draw?

That the penalty kick was introduced into the rules of soccer in season 1891-92 at the instance of the Irish Football Association?

That the word "whistle" is never used in the actual laws of the game, but only in "Advice to Referees" in the Football Association's "Guide to the Laws of the Game"?

That in season 1939-40 no compensation will be paid in the event of a League match being postponed for an F.A. cup-tie when both clubs are still engaged in the Cup competition?

The record attendance for a football match in England is at present a mystery, although it is believed that the largest number of people present at a game was at the F.A. Cup Final between Bolton Wanderers and West Ham United at Wembley Stadium in April, 1923. The official number of those who paid or were ticket-holders was 126,047, although it was obvious that the attendance was more like 200,000.

Record Scottish Cup Final figures were put up in 1937—attendance, 146,433; receipts, £12,248.

The record at an Amateur Cup Final was at the Ilford-Leyton game in 1929. There were 35,034 spectators.

Bury's score of 6—0 against Derby County in 1903 is a record for Cup Finals.

The Scottish Cup was won by a Second Division club for the first time in 1937-8. The club was East Fife.

Aston Villa and Blackburn Rovers are England's joint record Cup-holders. Each club has won the trophy six times.

In 1929-30, Glasgow Rangers won the Scottish Cup, the Scottish League championship, the Glasgow Cup, the Glasgow Charity Cup and the Scottish Second Eleven Cup. The Charity Cup was won by the toss of a coin, after two hours' battling with Celtic in the final. They followed this by again winning everything played for in 1933-34. Celtic performed that feat once—in 1908.

# EASTERN NATIONAL

LUXURY COACHES

AND

OMNIBUSES

AVAILABLE FOR

## PRIVATE HIRE

Reasonable Quotations : Reliable Service

### A REMINDER

Regular Express Services are operated during the Summer Months from LUTON to BOURNEMOUTH, PORTSMOUTH and SOUTHSEA, MARGATE, YARMOUTH, SOUTHBEND, CLACTON and DOVERCOURT. Excursions and Tours to other South and East Coast Resorts. Half-day and Evening Circular Tours.

THE EASTERN NATIONAL OMNIBUS Co., LTD.

LOCAL OFFICES:  
PARK SQUARE, CASTLE ST.,  
AND WILLIAMSON STREET,  
LUTON (PHONE 1260)

HEAD OFFICES:  
NEW WRITTLE STREET,  
CHELMSFORD.  
PHONE 3431 (THREE LINES)

EN. AD. 4574/29639

## Vauxhall Motors F.C.

President: T. Mackenzie, Esq.

Chairman: Mr. F. Burdett.

Vice-Chairmen: Mr. F. Barker and Mr. G. Cooper.

Hon. Secretary: Mr. K. Edge.

Assistant Hon. Secretary: Mr. W. J. Hunter.

Team Manager: Mr. E. Simms.

Assistant Team Managers:

Mr. J. Duke and Mr. W. J. Hunter.

Trainers (Senior): Mr. E. Hare, Mr. F. Cooper.

Trainers:

Mr. W. Woodbridge, Mr. W. Askew and Mr. H. Buckley.

Colours: Gold and blue jerseys, black knickers.

Telephone: Luton 2600.

Telegrams: Football, Carvaux, Luton.

Ground: Kimpton Road, adjoining Works.

FIXTURES, 1939-40

SPARTAN LEAGUE

Aug.	26	—Stevenage	.....A
"	30	—Luton Amateur (Wednesday)	.....H
Sept.	6	—Luton Amateur (Wednesday)	.....A
Oct.	7	—Lea Bridge Gas	.....H
"	28	—Harlow Town	.....A
Dec.	2	—Welwyn Garden City	.....H
"	16	—Hatfield II.	.....A
"	23	—Stevenage	.....H
"	26	—Upminster	.....H
Jan.	20	—Hatfield II.	.....H
"	27	—Lea Bridge Gas	.....A
Feb.	3	—Epping Town	.....A
"	10	—Bishops Stortford	.....A
"	24	—Welwyn Garden City	.....A
Mar.	2	—Sawbridgeworth	.....H
"	9	—White City	.....H
"	16	—Stanstead	.....A
"	23	—Sawbridgeworth	.....A
"	25	—Upminster	.....A
"	30	—Stanstead	.....H
April	6	—Harlow	.....H
"	10	—R.A.F. Henlow (Wednesday)	.....A
"	13	—Bishops Stortford	.....H
"	17	—R.A.F. Henlow (Wednesday)	.....H
"	20	—Epping Town	.....H
"	24	—White City	.....A

# Vauxhall Motors F.C.

(Continued)

## SOUTH MIDLANDS LEAGUE—DIVISION I.

Aug.	26—Cambridge Town	H
Sept.	2—Kettering	A
"	7—Kryn & Lahy (Thursday)	A
"	9—Wolverton	H
"	13—Esavians (Wednesday)	A
"	23—Biggleswade	A
Oct.	7—Eynesbury	A
"	14—Stewartby Works	H
"	21—Waterlow's	H
"	28—Kryn & Lahy	H
Nov.	4—L.B.C., Bletchley	H
"	18—Stewartby Works	A
"	25—Waterlow's	A
Dec.	2—Baldock Town	A
"	16—Rushden Town	H
"	23—Cambridge Town	A
Jan.	6—Kempston Rovers	H
"	13—Kettering Town	H
"	20—Arlesey Town	A
"	27—Esavians	H
Feb.	3—Wolverton Town	A
"	17—Baldock Town	H
"	24—Biggleswade	H
Mar.	9—Kempston Rovers	A
"	16—Eynesbury	H
April	6—L.B.C., Bletchley	A
"	20—Rushden Town	A
"	27—Arlesey Town	H

# Vauxhall Motors F.C.

(Continued)

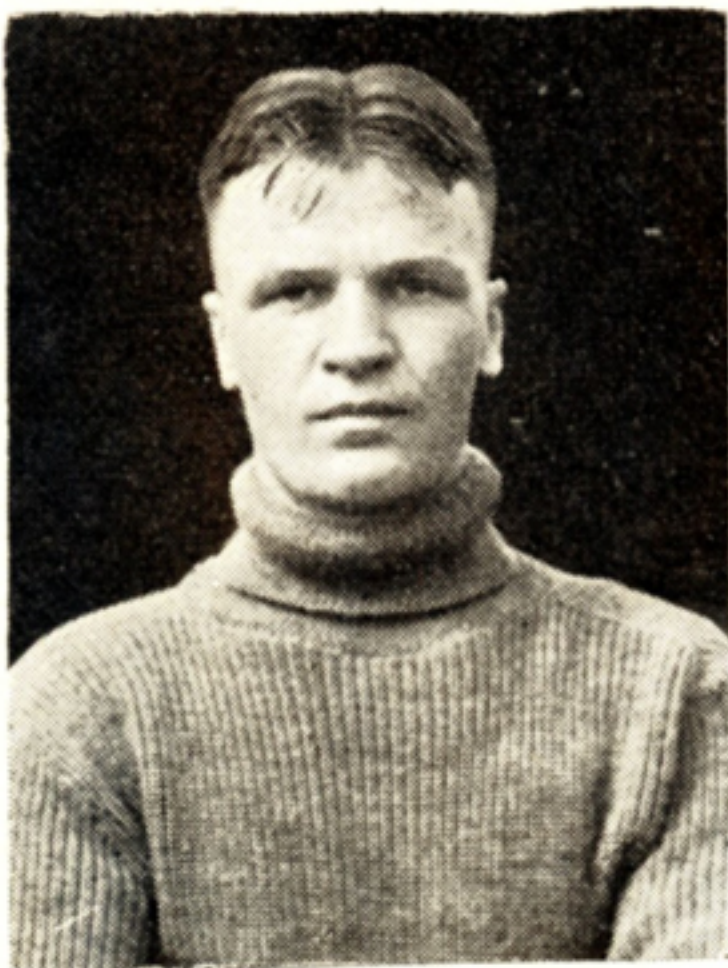
## SOUTH MIDLANDS LEAGUE—DIVISION II.

Aug.	26—Bondor	A
"	30—Luton Amateur (Wednesday)	A
Sept.	2—R.A.F. Henlow	H
"	6—Luton Amateur (Wednesday)	H
"	9—R.A.F. Cardington	A
"	23—Letchworth	A
"	30—R.A.F. Henlow	A
Oct.	14—Luton Old Boys	H
"	21—Luton Gas	A
"	28—Stewartby Works	H
Nov.	4—Wootton Blue Cross	A
"	18—Biscot Sports	A
"	25—R.A.F. Cardington	H
Dec.	2—Luton Corinthians	A
"	16—Luton Old Boys	A
"	23—Bondor	H
"	30—Bagshawe's	H
Jan.	13—Biscot Sports	H
"	20—Bagshawe's	A
"	27—Luton Davis	H
Feb.	10—Luton Gas	H
"	17—Stewartby Works	A
"	24—Bedford Q.P.R.	A
Mar.	2—Luton Corinthians	H
"	9—Luton Davis	A
"	16—Bedford Q.P.R.	H
"	30—Letchworth	H
April	27—Wootton Blue Cross	H



**Joseph L. Coen**

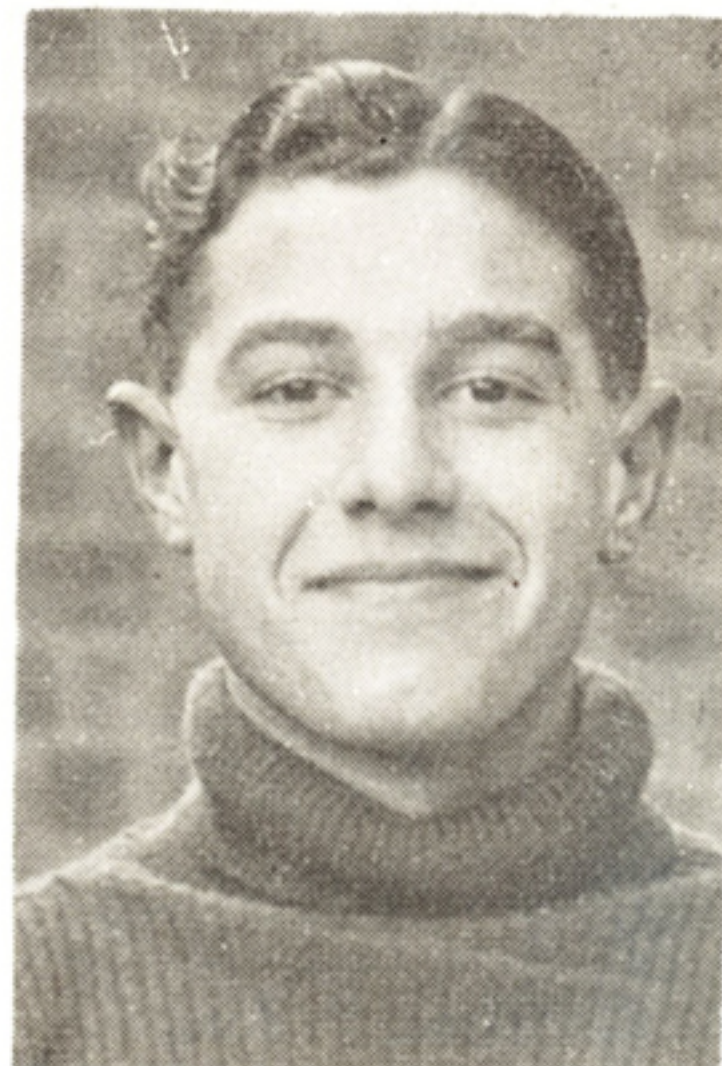
**Goalkeeper.**—A sturdy Scot who was born at Glasgow and is just topping the middle twenties only, in spite of his long experience for he was a mere schoolboy when he first turned out for Clydebank, and then for Glasgow Celtic. He decided to try his fortune in the south, and so came to Guildford, but did not stay there very long, being required by Bournemouth and Boscombe, and it was from there he came to Luton, and is now staying for his sixth season. Joe regarded himself as a shipyard time-keeper, but that was not his job for long, professional football having the bigger attraction. He does not look it, but he claims 5ft. 11in., and weighs 13st. Likes golf and a bit of lawn tennis.



**Samuel Mayberry**

**Goalkeeper.**—Samuel Mayberry may have to be second string to Joe Coen for some time yet, though his day will come eventually. He also was born the other side of the Tweed, the famous nursery, Bellshill, being his birthplace. However, he was young when he moved down to Scunthorpe, and played for the school team there, then from junior clubs to the useful Midland League club, Gainsborough Trinity, during the 1936 season. The following season he impressed Luton so much that he was brought here, and has advanced in physique and in quality. Is not yet 21 years of age, but stands 6ft. 11in., and weighs over 13st. Next to football he likes cricket.

---



**George E. Duke**

**Goalkeeper.**—One of the few Southerners in the Club. Comes from Ovingdean, near Brighton, and played for Southwick as an amateur in the early part of last season. Eighteen years of age only, his displays brought him into prominence, and he was tried successfully by Luton, and eventually induced to sign professional forms. Played regularly in the last month or two with the Colts team, and enhanced the good opinions of his talent. 5ft. 11in., 11st. 9lb.

---



**Thos. P. King**

**Full back.**—Was born at the hamlet of Woolsthorpe-by-Belvoir, which is on the Duke of Rutland's estate, and after leaving school Tom was employed as a gardener's boy on that vast holding. He found time to play football, and soon discovered that was his natural sporting bent. After playing for Woolsthorpe for a time he was advanced enough to play for Sneinton, a strong junior club near Nottingham, and it was while with them that Notts. County secured him. They kept him only one season, and then he went to Bournemouth, whence he was transferred to Luton two seasons ago and helped to win promotion. Sturdy and stout-hearted, Tom King won his place in the team last season by sheer merit. 5ft. 8½in., 11st. 4lb.



**George M. Carr**

**Full back.**—Comes from Washington on the North-East coast, and was playing full back for Hilton Colliery Welfare Juniors when discovered last season, and accepted straightway an offer of professional status. Is but eighteen years old, but has made rapid progress, and promises to become a fine player. Is strong and fearless, and kicks a good length. 5ft. 10in., 11½st.



**Thos. H. Dunsmore**

**Full back.**—Motherwell reared him, and like most of the clever footballers from that district, he was a miner after leaving school, so he played football for Motherwell Miners' Welfare, then for Bellshill Athletic, and later Royal Albert, before Hibernians took a liking for him. Of his ability there was never any question in Scotland, and he played for Edinburgh against Glasgow in the Coronation Shield match. From the Hibernians he was transferred to Luton at the beginning of last season, and quickly made his name; so much so that the Scottish F.A. Selection Committee came down to see him play. Seems sure eventually to gain a Scottish cap. Is a brilliant two-footed back, though preferring the left flank; has all the courage and audacity necessary, and as he likes Luton, he should be here a long time. Swimming and golf are secondary sports to football. 5ft. 8in., 11½st.



**Bert. R. Lutterloch**

**Full back.**—Born in London, Bert Lutterloch played for Tufnell Park, then one of the strongest London amateur clubs. He was persuaded to take the professional ticket for a French club, Lille, and while there he made a reputation good enough to bring him back to England to play for the Wolves. At that time he was a forward, and a hefty and speedy player at that, but he went from Wolverhampton to Aldershot, and it was his big part in the latter team that gained recognition from Luton. Here, however, he did not take the eye as an attacker, and was tried at half-back with more success, and later at full back, and has developed splendidly. Has a Championship of France medal won six years ago. 5ft. 10in., 11st. 10lb.



**Charles Joseph Ladd**

**Full back.**—Born at Plaistow, Ladd played for an East London junior side the season before last, and then joined Wimbledon, afterwards coming to Letchworth Town. The Town club had never lost touch with him, and when he shone in a trial match or two he was signed in February as a professional, being just eighteen years old. Ladd is a fine positional player already, and a powerful kicker. Stands 6ft., and weighs 12st.

---



**Harry H. Fletcher**

**Full back.**—Comes from Sunderland, and partnered Carr with Hilton Colliery Welfare, being brought to Luton simultaneously. Along with Carr has made progress in the Colts eleven under George Martin, and should develop further with his partner of junior football. He also is in his teens. Is big and strong, and has a powerful kick. 5ft. 11in., 11½st.

---



**John Finlayson**

**Half-back.**—Is not such a veteran as some people think, for he has far more years to come in the game than he has had, and that goes for more than a few years. "Jock" was born at Thornliebank, and after playing for the amateurs of his native village, he was persuaded to sign forms for Motherwell. He was an inside forward then, and did not remain with Motherwell very long, but went to Cowdenbeath, and thence to Clapton Orient. There he was variously played back and at half-back, but when he came to Luton four years ago he was ranked as a half-back and made the position his own. Is a consistent and reliable player, and if lacking the pace of some of his colleagues, he has a lot of wisdom under his thatch that saves his legs a lot of work. Jock is staunch in every way, and is solidly built. Stands 5ft. 11in., and weighs 12st.

---



**George Wm. Goodyear**

**Half back.**—A Luton lad who has steadily mounted to the London Combination side, Goodyear has recently attained maturity. Played for Luton Sundale in the Luton and District League, and then for Biscot Sports, but two seasons ago joined Hitchin Town, and there won honours. Last season was tried out by Luton, and was signed as a professional. 5ft. 9in., 11st.

---



**Robson Campbell**

**Half back.**—This clever young player was born at Pegswood, Northumberland, and on leaving school came south to join a well-known London drapery firm to which is attached the Ravensbourne club. Is still in his teens. Came to the notice of Mr Hugh Woods, the vice-chairman of the Club, two seasons ago, and trials amply indicated possibilities. Has continued to make splendid progress, and should develop to International class. After a period with the "Colts" he became a regular of the London Combination side, and is now on the threshold of the first team. Apart from football he plays cricket, tennis, and likes a swim. 6ft. something, 12st.

---



**Gordon Dreyer**

**Half back.**—Native of Sunderland and was an apprentice to a shipwright business, when he made football his pastime. Was offered trials by several big clubs before joining up with Hartlepoons United. Proved useful in any middle line position, and Hull City took a liking to him and had him for a season. Then he returned to Hartlepoons for a couple of seasons, and was free of transfer bonds when he turned up at Luton and asked for a trial. Got it, and proved so satisfactory with the Reserves that he was re-engaged for last season. Had his first real chance in the senior side at Christmastide, and took it to such good purpose that he retained the place. Doughty, persevering sort, whose football improved immensely while with the first eleven. Likes tennis and swimming. 5ft. 10in., 11st. 12lb.

---



**Peter Joseph Burke**

**Half back.**—This centre-half recruit was born at Williamstown, Galway, but moved to England, and it was in the Lancashire district he came to the front. He was seventeen years of age when Liverpool decided that there was talent, and he played as an amateur for Liverpool's second team. Prescott Cables were mainly responsible for his development, however, and from there he was signed by Oldham Athletic just over five years ago, while still in his teens. Two years later he was transferred to Norwich City, and thus has had three seasons plus with the East Anglian side. Is a rugged type, strong and hardy, as could be expected from one who lives the outdoor life of a bricklayer, and he has followed this occupation this summer. 5ft. 11½in., 12st. 6lb.

---



**Edward Hindmarsh**

**Half back.**—Yet another of the Hilton Colliery Welfare team, this lad of seventeen comes from Castletown, near Sunderland. Made a great impression by his skill against older and more experienced opponents in the Colts team, and it is believed he will develop into a great centre half. 5ft. 11in., 10st. 10lb.

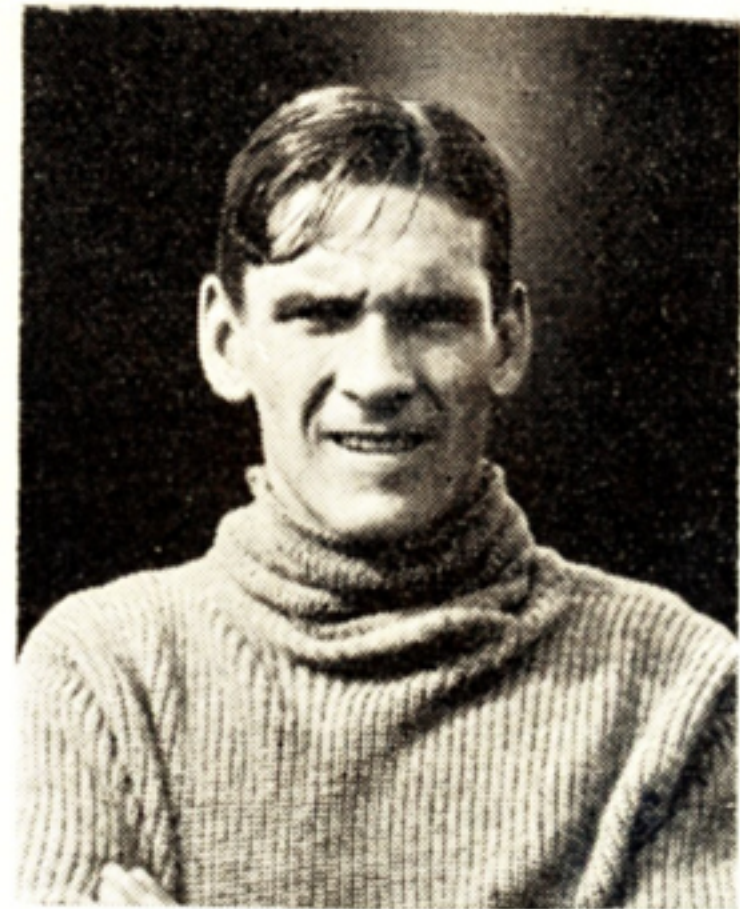
---



**Fred Roberts**

**Half back.**—Born at Greet's Green, Birmingham. Played for Smethwick Highfield and Piggott's Works before being signed by Birmingham. After a season at St. Andrew's he was transferred to Luton Town five seasons back, and has been one of the best bargains the Club ever made. Was an inside left until last season, but had from time to time proved more than useful at half back. Drafted into the middle line during emergency, he soon proved that he was better than in the attack, and when Nelson was injured he took over the reins of captaincy with credit and the confidence of his colleagues. A grand club player in every sense of the word. Likes bowls, tennis and fishing. 5ft. 8in., 11½st.

---



**Douglas Gardiner**

**Half back.**—Brought down from Scottish junior football last season, this brilliant, two-footed player seems destined to big things. Was born at Douglas (Scotland), and was playing for Auchinleck Talbot when persuaded to leave his occupation as a miner and sign forms for Luton last close season. Very speedily made a lot of friends by his skilful football, which is of the renowned Scottish pattern. Like Campbell, he soon made good with the "Colts," and was promoted, and there is sure to be further promotion for him very soon. 5ft. 8in., 11st.

---

# LUTON TOWN F.C. 1st XI. FIXTURES, 1939-40

(Division II.)

Date	Opponents	Ground	Goals		Date	Opponents	Ground	Goals	
			For	Against				For	Against
1939					1940				
Aug. 26	Sheffield Wednesday	H	(1	5)	Jan. 6	Bury	A	(5	2)
" 30	Bradford	A	(1	2)	" 13	F.A. Cup, Third Round			
Sept. 2	Fulham	A	(1	2)	" 20	Notts Forest	H	(1	0)
" 6	Millwall Athletic	H	(0	0)	" 27	Plymouth Argyle	H	(3	4)
" 9	Bury	H	(2	1)	Feb. 3	Leicester City	A	(—	—)
" 16	Notts Forest	A	(4	2)	" 10	Chesterfield	H	(5	0)
" 23	Plymouth Argyle	A	(1	4)	" 17	Southampton	A	(4	0)
" 30	Leicester City	H	(—	—)	" 24	Newport County	H	(—	—)
Oct. 7	Chesterfield	A	(2	1)	Mar. 2	Barnsley	A	(—	—)
" 14	Southampton	H	(6	2)	" 9	Burnley	H	(1	0)
" 21	Newport County	A	(—	—)	" 16	Tottenham Hotspur	A	(1	0)
" 28	Barnsley	H	(—	—)	" 22	Manchester City	A	(2	1)
Nov. 4	Burnley	A	(2	3)	" 23	Swansea Town	H	(6	3)
" 11	Tottenham Hotspur	H	(0	0)	" 25	Manchester City	H	(3	0)
" 18	Swansea Town	A	(3	2)	" 30	Newcastle United	A	(0	2)
" 25	Newcastle United	H	(2	1)	April 6	West Brom. Albion	H	(3	1)
Dec. 2	West Brom. Albion	A	(0	3)	" 13	Birmingham	A	(—	—)
" 9	Birmingham	H	(—	—)	" 20	Coventry City	H	(1	3)
" 16	Coventry City	A	(0	1)	" 27	Bradford	H	(2	2)
" 23	Sheffield Wednesday	A	(1	4)	May 4	Millwall Athletic	A	(1	2)
" 25	West Ham United	A	(1	0)					
" 26	West Ham United	H	(1	2)					

The figures in parentheses are results of corresponding matches last season. Birmingham and Leicester City take the places of Blackburn Rovers and Sheffield United, promoted to the First Division, and Barnsley and Newport County take the places of Tranmere Rovers and Norwich City, relegated to the Third Division. Last season the Town drew with Blackburn Rovers (2—2) at home, and lost against Sheffield United (2—0) at home, and drew (2—2) at Sheffield; (0—2) at Blackburn; they beat Norwich City (2—1) at home, and were defeated (1—2) at Norwich. They won at Tranmere (3—2) and also beat them at Luton (3—0).

IT'S SO CREAMY!

# J.W.GREEN'S MILK STOUT

GUARANTEED TO CONTAIN THE ENERGIZING  
CARBOHYDRATES OF THE PUREST DAIRY MILK

J. W. GREEN, LTD. The Brewery, Luton.

Telephone : Luton 3131



**James Carroll**

**Outside right.**—Truly a canny Scot, though his name smacks of Ireland, and therefore it is not surprising to know that he first came into prominence with Belfast Celtic, though a Glasgow registrar was the first to enter his name in official records. Clyde, then perhaps hardly so prominent as now, took him from the Belfast club and brought him into even greater prominence, and they had their reward when Leicester City paid a big fee for him less than four years ago. Last season Luton secured his transfer, but he was terribly unfortunate, for he was severely injured in his first game, and it was not until late in the season that he was able to take his place in the senior side. Even then he had not regained complete confidence, but of his skill there could be no question. With better fortune this term he may amply fulfil the requirements of a position that has long been unsatisfactory. 5ft. 6½in., 11st.



**Charles Clark**

**Outside right.**—Born at Fleet, Hants., this young player signed for Queen's Park Rangers when he was just old enough to take the professional ticket, and he remained with them for three seasons, being listed as an inside right, but he occupied at one time or another every forward position for them. Joining Luton last season, he played for a time at inside right with the Combination side, and then was tried at outside right, and gained a place in the first eleven for a time. Is speedy and a good shot, and apt to score surprise goals. 5ft. 7in., 11½st.



**William W. Burgess**

**Outside right.**—This player, still in his teens, started last season as an amateur, having previously played for Rushden Town. Sprang into favour immediately by his skilful ball control and his clever centres. Subsequently found a place in the first eleven for a time, and proved good enough when he has had a little more experience. Played on the extreme of either wing with equal success, and should be a valuable reserve for either position. Is 5ft. 7in., and weighs 10st.

---



**William Redfern**

**Inside forward.**—Born at Connahs Quay, and is the only Welshman in the club. From his local environment he went to Liverpool Marine, and thence to Newry Town, Ireland, where he remained four seasons, and usually figured at centre-forward. Fame as a scorer reached Luton, and he was transferred at the beginning of Luton's first season after promotion. His cleverness of control soon proved that he was more adaptable to inside wing play, and he was chiefly with the London Combination side until last season was well advanced. Then returned to the first eleven and became a regular, and a first-class forward able to hold his own with the best. Usually found the goal when it was most necessary, but had much to do with the development of Billington at centre-forward. Is a craftsman, and a credit to the game. 5ft. 11½in., 12st.

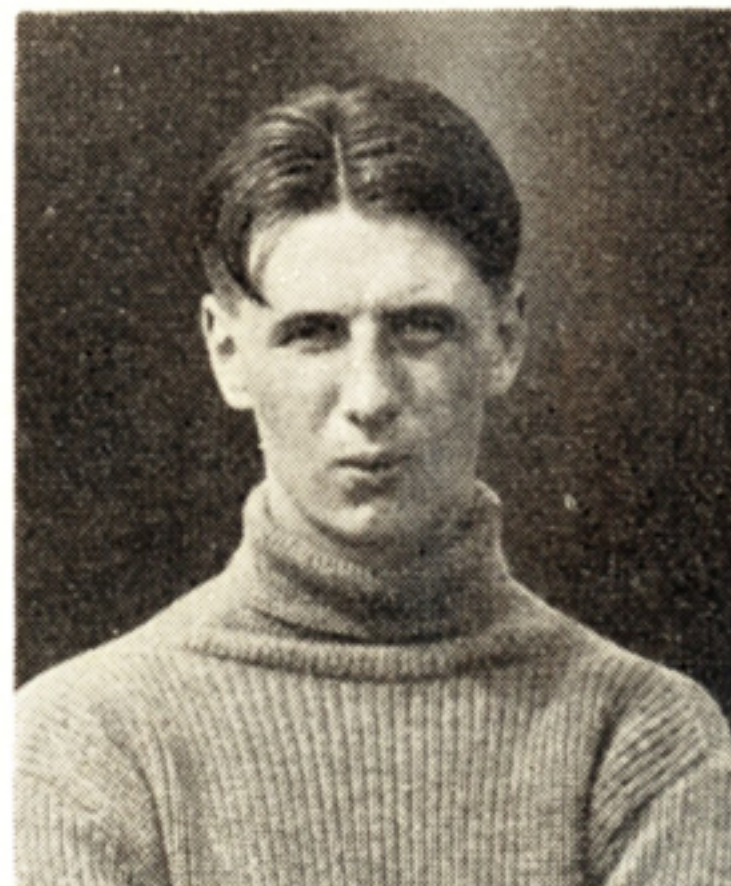
---



**Horace Gager**

**Inside forward.**—Luton lad who was a persistent goal-scorer for the Luton Sundale team for a couple of seasons, and later joined the Vauxhall Motors. His strong and thrustful play with the works club gained recognition from League clubs, but Luton were alive to the situation, and persuaded him to sign forms last season but one. Rapidly won a place in the Combination side, and has always been a reliable and unselfish player with the "Stiffs." Is now waiting for a chance to move into the first eleven, and a further rise will be popular with all sections of the Town crowd. Is a useful cricketer. 5ft. 11in., 12st.

---



**Jas. F. Laing**

**Inside forward.**—Was born at Glasgow, and was playing for Ashfield Juniors, the well-known Scottish junior side, when "spotted" by Luton scouts, and persuaded last close season to take the professional ticket and come south. Still in his teens, has grown up to 5ft. 11in., and therefore has yet something to make up in stamina. For real craft there are few youngsters that could surpass him in control and football intelligence, and he has ample confidence, so should reach the highest class. Has appeared with the "Colts" and the Combination side, and when he allies strength to artistry he should prove one of the best inside forwards Luton ever signed. Was traveller for a cycle firm before joining ranks of professional footballers. 5ft. 11in., 11st. 4lb.

---



**August F. Scott**

**Inside forward.**—This young player was also brought from Hilton Colliery Welfare Juniors towards the end of last season, where his skill had attracted several clubs. Soon showed promise when tried out by Luton, but unfortunately met with an accident which prevented him finishing the season. Hopes to resume this term with better fortune. 5ft. 5in., 10st.



**Hugh J. Billington**

**Centre-forward.**—The acquisition of this local lad was one of the best achievements of the official staff of Luton Town in the history of the club. Twelve months ago Hugh had not played as a professional, although he had signed forms a month or two before, but to-day he is hailed throughout the country as one of the most clever, as well as one of the most successful, leaders in the game. Hugh was born at Ampthill, a member of a football family of some note, but came to Luton in early years, and played for Christ Church Schoolboys, and for Luton Schoolboys. Later he played for Luton Cocoa Works, then Chapel-street Methodists, and then went to Waterlow's, where he remained three seasons. Scored an enormous number of goals, played for the County and for the Spartan League also with equal success. Soon made a hit in the Town Reserves, scoring regularly, and became a member of the first team on Bonfire Day last year. Had good reason to remember it, for he scored twice in his first League game, held the position safely afterwards, and headed the list of Second Division scorers last season with a total of 28 in as many games. 5ft. 10in., 11st. 10lb.



**Edward J. Vinall**

Centre-forward.—Was born at Witton, Birmingham, and after leaving school entered the electrical business, and played for a works club, and had several games with Birmingham Reserves as an amateur before taking the professional role for Folkestone. Thence he went to Sunderland, where he remained for two seasons, and then went to Norwich City, helping them to win promotion. Was a prolific scorer in East Anglia, and two seasons ago came to Luton. Gave splendid service to the first eleven in his first season, but last term he had to be content chiefly with a place in the Reserves, and there he played just as well and did much to encourage the younger talent. Is a clever and unselfish player, and a grand marksman. Likes golf when he is not playing football. 5ft. 10½in., 12st. 3lb.

---



**Cyril Fullarton**

Centre forward.—A local boy from Aley Green, and played for the Luton and District League club, Aley Green Athletic, until the beginning of this year. His scoring feats attracted the attention of the Town club and others, and he actually signed for Waterlow's Athletic, but had not been with the Dunstable club many weeks before he accepted professional terms and signed for the Town. Was ill during the closing weeks of last season, and unable to play for some time, but the Town were well satisfied with the form he had shown, and it is believed he will make progress equivalent to that of Hugh Billington. 5ft. 10in., 11½st.

---



**Edward Duggan**

**Forward.**—Born at Plaistow, this lad came to Luton last season and secured work on the Town ground. Was given trials with the Colts team, and eventually gained a regular place, although only sixteen years of age. Physique was not sufficient to withstand the buffeting from older players, and eventually he played at outside left, where his footwork stood him in good stead. 5ft. 9in., 10st. 5lb.

---



**Edward Connelly**

**Inside forward.**—Hails from Newmills, Fifeshire, and was playing for Roslyn Juniors when Newcastle United took him in 1925 just when he was old enough to be a professional. Came to Luton towards the end of the season before last, and immediately made a hit by his skilful footwork. Played on the right wing until the end of the season, and began there last term, but was then transferred to his best position at inside left. One of the most brilliant players Luton ever signed, and he cost them the largest fee they have ever paid for a player, but he has been worth it. 5ft. 7½in., 10½st.

---



**James Gillespie**

Inside forward.—A Scot from Greenock, this lad came to work at Luton, and was "spotted" when playing for Luton Rob Roy, the Luton District and South Beds. team. Shortly before the end of the season he was signed on amateur forms by Portsmouth, but at the end of the term he was persuaded to sign professional forms for Luton. Is very adroit, splendid in control, and a useful marksman. Should make good with the Town very quickly. Nineteen years old, he is 5ft. 9in., and weighs 11st.

---



**George Stephenson**

Outside left.—Is a native of Stillington, Northumberland, and now has the longest record of service among the Town players, having been transferred from Aston Villa to Luton shortly before Roberts came along from Birmingham. Now begins his sixth season with the club, and is good enough to treble that period, for he is strong and more assertive than ever. After junior football in Durham he played for Durham City, and then went to Aston Villa. Played more games and more consecutive games for Luton Town than any winger since the War, and has scored more consistently than any winger the club have had in this generation. Is very speedy and a magnificent shot. 5ft. 9in., 12st.

---



**Fred Hogg**

Outside left.—Born at West Auckland, and lack of height was countered by delightful skill in footcraft. As a schoolboy gathered quite a lot of fame Auckland way, and was seventeen when drafted into the West Auckland Town side, a well-known amateur club. Had no hesitation in leaving his job as a lorry boy to become a professional footballer, but his diminutive size was a handicap to advancement as an inside forward, and so he was tried on the left wing in the closing months of last season. There his natural aptitude for the game found better opportunity of expression, and it was with that object in view that he was re-engaged for this season. Bright of disposition and twinkling feet, he is deservedly popular with the crowd. Likes a bit of cricket in summer. 5ft. 3½in., 10st.

# MAC GENTLE LTD.

*incorporating*

**THE LUTON MOTOR TYRE CO.**  
TYRE FACTORS AND MOTOR AGENTS

**DUNLOP  
GOODYEAR  
FIRESTONE  
DAVIES  
INDIA**  
Rebuilds,  
etc.

**at Lowest  
Prices**



AGENTS FOR  
**MORRIS  
AUSTIN  
STANDARD  
AND  
FORD**

—  
**USED CAR  
BARGAINS**

**60 NEW BEDFORD ROAD,**

**LUTON** **ACCESSORIES**  
**REPAIRS**

**PHONE 1340**

**USED CARS BOUGHT FOR CASH**

# LUTON TOWN F.C. 2nd XI. FIXTURES

Date	Opponents	Ground	Goals	
			For	Against
1939				
Aug. 26	West Ham United ..	A (1 2)		
" 28	Fulham .....	A (1 3)		
Sept. 2	Brentford .....	H (3 2)		
" 9	Bournemouth & Bos.	A (3 1)		
" 13	Arsenal .....	H (0 1)		
" 16	Portsmouth .....	H (4 0)		
" 23	Watford .....	H (1 2)		
" 27	Fulham .....	H (3 1)		
" 30	Northampton Town	A (4 1)		
Oct. 7	Leicester City .....	H (6 1)		
" 9	Millwall Athletic ....	A (5 1)		
" 14	Reading .....	A (2 4)		
" 21	Crystal Palace .....	H (5 0)		
" 28	Charlton Athletic ..	A (3 2)		
Nov. 4	Swansea Town ....	H (5 1)		
" 11	Tottenham Hotspur	A (2 2)		
" 18	Queen's Park R'gers	H (0 1)		
" 25	Clapton Orient ....	A (1 2)		
Dec. 2	Chelsea .....	H (2 1)		
" 9	Southend United ..	A (1 1)		
" 16	Southampton .....	H (6 0)		
" 23	West Ham United ..	H (2 1)		
" 25	Brighton & Hove Al.	H (2 1)		
" 26	Brighton & Hove Al.	A (0 3)		
" 30	Brentford .....	A (2 2)		

1939-40

(Football Combination)

Date	Opponents	Ground	Goals	
			For	Against
1940				
Jan. 6	Bournemouth & Bos.	H (5 0)		
" 13	Arsenal .....	A (2 4)		
" 20	Portsmouth .....	A (2 2)		
" 27	Watford .....	A (0 0)		
Feb. 3	Northampton Town	H (0 0)		
" 7	Southampton .....	A (2 2)		
" 10	Open			
" 12	Leicester City .....	A (5 0)		
" 17	Reading .....	H (7 0)		
" 24	Open			
" 28	Crystal Palace .....	A (0 0)		
Mar. 2	Charlton Athletic ..	H (4 2)		
" 9	Swansea Town ....	A (0 2)		
" 16	Tottenham Hotspur	H (1 1)		
" 22	Bristol City .....	H (3 1)		
" 23	Queen's Park R'gers	A (0 1)		
" 25	Bristol City .....	A (3 2)		
" 30	Clapton Orient ....	H (5 0)		
April 6	Chelsea .....	A (0 2)		
" 13	Southend United ..	H (4 0)		
" 20	Open			
" 24	Millwall Athletic ..	H (3 0)		
" 27	Coventry City .....	A (1 2)		
May 4	Coventry City .....	H (3 1)		

The finest Selection of the

★ *In the most Comfortable*

Charles MARES Limited

Smartest MEN'S WEAR

Shop for miles and miles ★

65/7 George Street, Luton

## Luton Town "A" Fixtures

The United Counties League and the  
East Midlands League.

Aug.	28—Kettering Town	A (U.C.L.)
Sept.	2—Desborough	A (U.C.L.)
"	9—Spalding	H (E.M.L.)
"	16—Rushden	A (E.M.L.)
"	23—Spalding	A (E.M.L.)
Oct.	7—Wellingborough	A (E.M.L.)
"	21—Stewart & Lloyd	H (U.C.L.)
Nov.	11—Wellingborough	H (E.M.L.)
"	25—Rushden	H (E.M.L.)
Dec.	2—Rushden	H (U.C.L. K.O.)
"	9—Bedford	H (E.M.L.)
"	16—Rushden	A (U.C.L.)
"	23—Wisbech	A (E.M.L.)
"	25—Bedford	A (U.C.L.)
"	26—Bedford	H (U.C.L.)
"	30—Wellingborough	H (U.C.L.)
1940		
Jan.	6—Desborough	H (U.C.L.)
"	13—Spalding	A (U.C.L.)
"	20—Spalding	H (U.C.L.)
Feb.	3—Kettering	H (U.C.L.)
"	10—St. Neots	A (U.C.L.)
"	24—Wisbech	A (U.C.L.)
Mar.	9—Bedford	A (E.M.L.)
"	16—Kettering	H (E.M.L.)
"	22—Luton League	H (Friendly)
"	23—Kettering	A (E.M.L.)
"	25—Stamford	A (U.C.L.)
"	30—Wisbech	H (E.M.L.)
April	6—Stewart & Lloyd	A (U.C.L.)
"	10—St. Neots	H (U.C.L.)
"	13—Wisbech	H (U.C.L.)
"	20—Desborough	A (U.C.L.)
"	25—Rushden	H (U.C.L.)
May	4—Stamford	H (U.C.L.)

## Muscle Users Must Use

# ELLIMAN

## ATHLETIC RUB

PRICE 1/-

### For Superb Physical Fitness



Promotes—AGILITY, ELASTICITY, FLEXIBILITY.

Prevents—STIFFNESS and STALENESS.

Guards Against—MUSCLE TEARS and STRAINS.

**POPULAR PRICE 1/-**

**NEWLY INTRODUCED POCKET SIZE 6d.**

**CLUB SIZE 2/6**

Of BOOTS, TIMOTHY WHITES & TAYLORS, and all high-class chemists.

Made by

**ELLIMAN, SONS & Co. Ltd., SLOUGH**



## Reginald Stockhill

inside forward. The Town's most recent signing. He comes to Kenilworth Road in part exchange for Bill Redfern, who was transferred to Derby County last week. Born at York, he was playing for them when he was 15, and after a short spell at Scarborough, signed for Arsenal where he stayed

three seasons. It was as a centre-forward that he went to Highbury, and he had several outings in the League side, although Lambert was at his best at that time. From London, he went to Derby where he had five seasons. For the County he appeared in all three inside positions, but it will be for inside-right that he will be required at Luton. Stands 5ft. 8½in., and weighs 10st. 6lb.



WITH  
**GOODLASS'**  
RENOWNED  
HIGHEST-GRADE  
**PAINTS**

YOUR HOME NEEDS THIS  
PROTECTIVE COATING!

**It costs no more**

Goodlass' Paints are used for the decoration and preservation of the

- ★ ROYAL PALACES
- ★ WESTMINSTER ABBEY
- ★ HOUSES OF PARLIAMENT
- also ★ THE "QUEEN MARY"

Surely this is sufficient evidence that they are  
**the best for British Homes?**

—Ask your Decorator to use them!

**SOLE AGENTS:**

**CHAMBERLAIN'S**  
**106 DUNSTABLE ROAD**

'Phone LUTON 329

## Luton Amateur F.C.—*continued.*

FIXTURES, 1939-40.

SPARTAN LEAGUE

Aug.	30—Vauxhall Motors (Wednesday)	A
Sept.	2—Sawbridgeworth	A
"	6—Vauxhall Motors (Wednesday)	H
"	16—Hitchin Town (F.A. Cup)	A
"	23—Amateur Cup	
"	30—Luton Town "A"	A
Oct.	7—Upminster	A
"	14—Bishops Stortford	H
"	21—R.A.F. Henlow	A
"	28—R.A.F. Henlow	H
Nov.	4—Lea Bridge Gas	A
"	11—Stanstead United	H
"	18—Senior Cup	
"	25—Hatfield United	A
Dec.	2—Stevenage Town	H
"	9—Welwyn Garden City	A
"	30—White City Sports	A
Jan.	13—White City Sports	H
"	20—Welwyn Garden City	H
"	27—Stevenage Town	A
Feb.	3—Sawbridgeworth	H
"	17—Hatfield United	H
"	24—Bishops Stortford	A
Mar.	2—Harlow Town	A
"	9—Upminster	H
"	16—Epping Town	A
"	25—Stanstead United (Easter Monday)	A
April	6—Epping Town	H
"	13—Harlow Town	H
"	20—Lea Bridge Gas	H

## GO BY BUS!



**Route 212—Frequent Service between**  
**LUTON, BARTON, SHILLINGTON**  
**and HENLOW CAMP**  
*also Gravenhurst, Campton,*  
*Meppershall and Stondon*

**Route 204—Daily between**  
**LUTON, WHITWELL**  
**ST. PAULS WALDEN and HITCHIN**  
*also*  
*Dane Street, Bendish & St. Ippolytts*

—:O:—

### **SPECIAL 'FOOTBALL' JOURNEYS**

ON BOTH ROUTES ● Ask Conductor for Free Time Tables

*Buses and Coaches for Private Hire*

ANY SIZE PARTY      Local Depot :      ANY DISTANCE  
**LONDON ROAD, HENLOW CAMP**

'Phone : Henlow Camp 244

## Luton Amateurs F.C.—*continued*


### SOUTH MIDLANDS LEAGUE

Aug.	26—Letchworth Town	A
"	30—Vauxhall Motors (Wednesday)	H
Sept.	2—Bagshawe's, Dunstable	H
"	6—Vauxhall Motors (Wednesday)	A
"	16—Davis Athletic	H
"	23—Biscot Sports	H
"	30—Letchworth Town	H
Oct.	7—Wootton Blue Cross	H
"	21—R.A.F. Henlow	H
"	28—R.A.F. Henlow	A
Nov.	4—R.A.F. Cardington	H
"	11—Biscot Sports	A
"	18—Luton Gas Works Athletic	A
"	25—Luton Corinthians	H
Dec.	2—Bedford Queen's Park	A
"	9—Bondor, Baldock	H
"	23—Davis Athletic	A
"	30—Luton Old Boys	H
Jan.	6—Stewartby Works	A
"	13—Luton Corinthians	A
"	27—Luton Gas Works Athletic	H
Feb.	3—R.A.F. Cardington	A
"	17—Wootton Blue Cross	A
"	24—Stewartby Works	H
Mar.	2—Bedford Queen's Park	H
"	9—Luton Old Boys	A
April	6—Bagshawe's, Dunstable	A
"	13—Bondor, Baldock	A

## THE DUJON RESTAURANT

87 UPPER GEORGE STREET, LUTON

Entrance **THROUGH** the Electricity  
Showrooms, Opposite the Town Hall



THE MOST ATTRACTIVE  
CAFÉ AND RESTAURANT  
IN LUTON

Comfort : Quality : Service  
Reasonable Charges

**DUDENEY & JOHNSTON LTD.**

'PHONE 651

# Waterlow's (Dunstable) Football Section

FIXTURES, 1939-40

Aug.	19—	.....	(Friendly)	
"	26—	Lyons Club	(Spartan)	..A
"	26—	Baldock Town	(South Mid.)	..H
Sept.	2—	Hoxton Manor	(Spartan)	..H
"	2—	Esavians Sports	(South Mid.)	..A
"	7—	Slough	(Spartan)	..H
"	9—	.....	(Spartan)	
"	9—	Esavians Sports	(South Mid.)	..H
"	16—	Marlow	(Spartan)	..H
"	16—	Kryn & Lahy	(South Mid.)	..A
"	20—	Slough	(Spartan)	..A
(Wed.)				
"	23—	.....	(Amateur Cup)	
"	23—	Stewartby Works	(South Mid.)	..H
"	30—	Leighton United or Arlesey	(F.A. Cup)	..A
"	30—	Kryn & Lahy	(South Mid.)	..H
Oct.	7—	Letchworth Town	(Spartan)	..H
"	7—	Kempston Rovers	(South Mid.)	..A
"	7—	.....	(Amateur Cup)	
"	14—	.....	(F.A. Cup)	
"	14—	Arlesey Town	(South Mid.)	..H
"	21—	.....	(Senior Cup)	
"	21—	.....	(Amateur Cup)	
"	21—	Aylesbury	(Spartan)	..H
"	21—	Vauxhall Motors	(South Mid.)	..A
"	28—	.....	(F.A. Cup)	
"	28—	Letchworth Town	(Spartan)	..A
"	28—	London Brick Co.	(South Mid.)	..H
Nov.	4—	Leighton, Arnold's	(Leighton C.C.)	..H
"	4—	Cambridge Town	(Spartan)	..A
"	11—	.....	(F.A. Cup)	
"	11—	Aylesbury United	(Spartan)	..A
"	11—	Kettering Town	(South Mid.)	..H
"	18—	.....	(Amateur Cup)	
"	18—	.....	(Senior Cup)	
"	18—	Baldock Town	(South Mid.)	..A
"	25—	Chesham United	(Spartan)	..A
"	25—	Vauxhall Motors	(South Mid.)	..H
Dec.	2—	Maidenhead United	(Spartan)	..H
"	2—	Stewartby Works	(South Mid.)	..A
"	9—	Windsor & Eton	(Spartan)	..A
"	9—	Wolverton Town	(South Mid.)	..H
"	16—	Lyons Club	(Spartan)	..H
"	16—	Wolverton Town	(South Mid.)	..A

# CATARRH

EFFECTIVELY

# BANISHED

FROM YOUR  
SYSTEM



**Advice  
Free**

WRITE FOR  
MY FREE  
BOOKLET-  
DESCRIBING  
SIMPLE  
HERBAL  
TREATMENT  
FOR  
EVERYDAY  
COMPLAINTS

●  
*My simple*  
**HERBAL**  
**TREATMENT**  
*costs only a few*  
*Shillings*

●  
**Consult**

# EDITH M. HOWARD

(LATE OF HEATH & HEATHER)

MEMBER OF THE HEALTH PRACTITIONER'S ASSOCIATION  
AND HOLDING THEIR CERTIFICATE FOR PROFICIENCY IN  
HERBALISM

**12, THE ARCADE, DUNSTABLE ROAD, LUTON**

Dec.	23—	.....	(Spartan)
"	23—	.....	(South Mid.)
"	30—	.....	(South Mid.)..A
1940.			
Jan.	6—	.....	(Senior Cup)
"	6—	Hertford Town .....	(Spartan)..H
"	6—	Kettering Town .....	(South Mid.)..A
"	13—	Metropolitan Police .....	(Spartan)..A
"	13—	Rushden Town .....	(South Mid.)..H
"	20—	Wood Green .....	(Spartan)..H
"	20—	Kempston Rovers .....	(South Mid.)..H
"	27—	Hertford Town .....	(Spartan)..A
"	27—	.....	(South Mid.)..H
Feb.	3—	Metropolitan Police .....	(Spartan)..H
"	3—	Rushden Town .....	(South Mid.)..A
"	10—	.....	(Senior Cup)
"	10—	Eynesbury Rovers .....	(South Mid.)..H
"	17—	.....	(Leighton C.C.)
"	17—	Chesham United .....	(Spartan)..H
"	17—	.....	(Senior Cup)
"	24—	Hoxton Manor .....	(Spartan)..A
"	24—	Arlesey Town .....	(South Mid.)..A
Mar.	2—	Windsor & Eton .....	(Spartan)..H
"	2—	London Brick Co. ....	(South Mid.)..A
"	9—	Maidenhead United .....	(Spartan)..A
"	9—	Biggleswade .....	(South Mid.)..H
"	16—	Cambridge Town .....	(Spartan)..H
"	16—	Cambridge Town .....	(South Mid.)..A
"	23—	.....	(Spartan)
"	23—	.....	(South Mid.)..H
"	25—	.....	(Leighton C.C.)..A
(E. Mon.)			
"	30—	.....	(Spartan)
"	30—	Biggleswade .....	(South Mid.)..A
April	6—	Wood Green .....	(Spartan)..A
"	6—	.....	(South Mid.)..H
"	13—	.....	(Spartan)
"	13—	Eynesbury Rovers .....	(South Mid.)..A
"	20—	Marlow .....	(Spartan)..A
"	20—	.....	(South Mid.)..H
"	27—	.....	(Spartan)
"	27—	.....	(South Mid.)..A
"	29—	.....	(Spartan)
(Mon.)			
May	4—	Championship Match .....	(Spartan)
"	4—	Cambridge Town .....	(South Mid.)..H

Abbreviations.—F.A. Cup, English Challenge Cup; Amateur Cup, English Amateur Cup; Senior Cup, Beds. Senior Cup; Spartan, Spartan League; South Mid., South Midlands League (Division I).

SPECIALLY EASY TERMS

FROM

**B. LIDDELL**THE **100%** CYCLE**SPECIALIST**

FOR

**ALL YOUR CYCLING NEEDS**

MAKER OF THE FAMOUS "LIDDELL SPECIAL" HAND-BUILT LIGHT-WEIGHT RACING CYCLES and TANDEMS

Open on Saturdays until 9 p.m.

**58/60 LEAGRAVE ROAD****LUTON**

# Leighton United's Fixtures

## SPARTAN LEAGUE—DIVISION I.

Sept.	1—Hoddesdon Town	H
"	7—Wendover	A
"	9—Henley Town	A
"	14—Wendover	H
"	23—Saffron Walden	H
Oct.	14—Polytechnic	A
"	21—Henley Town	H
"	28—Hoddesdon Town	A
Nov.	4—Ware	H
"	18—Pinner	H
"	25—Aspley	A
Dec.	9—Pinner	A
"	25—Berkhamsted	H
"	26—Berkhamsted	A
Jan.	6—Aspley	H
"	13—Ware	A
"	20—Harrow	A
Feb.	17—Harrow	H
Mar.	9—Bishops Stortford	A
"	16—Bishops Stortford	H
"	30—Ford's Sports	H
April	6—Saffron Walden	A
"	13—Polytechnic	H
"	20—Ford's Sports	A
"	27—Hounslow Town	A
May	4—Hounslow Town	H

Sept.	16—Arlesey (F.A. Cup)	H
"	30—Winners v. Waterlow's	H



An accurate pass, an accurate shot . . . a GOAL, thanks to the perfect shape and quality of a Gunn & Moore Ball. Made of high-grade leather and entirely hand-sewn, G. & M. Balls withstand many arduous games.

Football success is due to good play plus good equipment—that's why leading teams buy GUNN & MOORE.

**LEFT WING.** 12-panel ball. 18/6  
Cowhide.

**IMPROVED RIGHT WING.** 18-panel Croxhide chrome tanned English case, hand-sewn. Best quality 19/6  
Bladder.

**CANNON T-Pattern.**  
In Cowhide, 25/6 In Tugite, 28/6

Other soccer and rugby balls, including all best known makes, from 10/-



**GUNN & MOORE**  
**FOOTBALLS**  
*Team Equipment*

Gunn & Moore balls, clothing and equipment are obtainable direct from Gunn and Moore Ltd. Special terms to Clubs & Schools.

Write for Free Illustrated Catalogue

**GUNN & MOORE LTD., NOTTINGHAM, ENGLAND.**

# FOOTBALL LEAGUE—FIRST DIVISION

	Home.			Away.			Goals.		
	P.	W.	L.	D.	P.	W.	L.	D.	Pts.
Everton .....	42	17	1	3	10	9	2	88	52
Wolverh'pton Wndrs.	42	14	1	6	8	8	5	83	39
Charlton Athletic ..	42	16	2	3	6	12	3	75	59
Middlesbrough .....	42	13	2	6	7	11	3	93	74
The Arsenal .....	42	14	4	3	5	10	6	55	41
Derby County .....	42	12	6	3	7	9	5	66	55
Stoke City .....	42	13	2	6	4	11	6	71	68
Bolton Wanderers ..	42	10	5	6	5	7	9	67	58
Preston North End ..	42	13	1	7	3	13	5	63	69
Grimsby Town .....	42	11	4	6	5	11	5	61	69
Liverpool .....	42	12	3	6	2	11	8	62	63
Aston Villa .....	42	10	7	3	5	10	6	71	60
Leeds United .....	42	11	5	5	5	12	4	59	67
Manchester United ..	42	7	5	9	4	10	7	57	65
Blackpool .....	42	9	4	8	3	12	6	58	68
Sunderland .....	42	7	7	7	6	10	5	54	67
Portsmouth .....	42	10	4	7	2	13	6	47	70
Brentford .....	42	11	8	2	3	12	6	53	74
Huddersfield Town ..	42	11	6	4	1	13	7	58	64
Chelsea .....	42	10	6	5	2	15	4	64	80
Birmingham .....	42	10	6	5	2	16	3	62	84
Leicester City .....	42	7	8	6	2	14	5	48	82

# SECOND DIVISION

	Home.			Away.			Goals.		
	P.	W.	L.	D.	P.	W.	L.	D.	Pts.
Blackburn Rovers ..	42	17	3	1	8	9	4	94	60
Sheffield United ....	42	9	3	9	11	5	5	69	41
Sheffield Wednesday..	42	14	3	4	7	7	7	88	59
Coventry City .....	42	13	4	4	8	9	4	62	45
Manchester City .....	42	13	5	3	8	9	4	96	72
Chesterfield Town ..	42	16	4	1	4	9	8	69	52
LUTON TOWN .....	42	13	4	4	9	11	1	82	66
Tottenham Hotspur..	42	13	2	6	6	12	3	67	62
Newcastle United ....	42	13	5	3	5	9	7	61	48
West Bromwich A. ....	42	15	3	3	3	12	6	89	72
West Ham United ..	42	10	6	5	7	9	5	70	52
Fulham .....	42	12	4	5	5	11	5	61	55
Millwall Athletic ....	42	12	3	6	2	11	8	64	53
Burnley .....	42	13	5	3	2	13	6	50	56
Plymouth Argyle ....	42	9	5	7	6	14	1	49	55
Bury .....	42	9	7	5	3	10	8	65	74
Bradford .....	42	8	7	6	4	12	5	61	82
Southampton .....	42	9	6	6	4	14	3	56	82
Swansea Town .....	42	8	7	6	3	12	6	50	83
Nottingham Forest ..	42	8	7	6	2	14	5	49	82
Norwich City .....	42	10	6	5	3	18	0	50	91
Tranmere Rovers ....	42	6	11	4	0	20	1	39	99

# LOANS



To Ladies  
and Gentlemen



£2 to £1,000

WITHOUT SECURITY



S. HIEGER  
65, GEORGE STREET  
LUTON

### THIRD DIVISION—Southern Section

	Home.			Away.			Goals.		Pts.
	P.	W.	L.	D.	P.	W.	L.	D.	
Newport County . . . .	42	15	2	4	7	7	7	58	45
Crystal Palace . . . .	42	15	2	4	5	8	8	71	52
Brighton & Hove A..	42	14	2	5	5	10	6	68	49
Watford . . . . .	42	14	1	6	3	12	6	62	51
Reading . . . . .	42	12	3	6	4	9	8	69	59
Queen's Park Rangers	42	10	3	8	5	10	6	68	49
Ipswich Town . . . . .	42	14	4	3	2	10	9	62	52
Bristol City . . . . .	42	14	2	5	2	12	7	61	63
Swindon Town . . . . .	42	15	2	4	3	14	4	72	77
Aldershot . . . . .	42	13	2	6	3	12	6	53	66
Notts County . . . . .	42	12	3	6	5	13	3	59	54
Southend United . . . .	42	14	2	5	2	15	4	61	64
Cardiff City . . . . .	42	12	8	1	3	8	10	61	65
Exeter City . . . . .	42	9	3	9	4	12	5	65	82
Bournemouth . . . . .	42	10	3	8	3	13	5	52	58
Mansfield Town . . . .	42	10	3	8	2	12	7	44	62
Northampton Town ..	42	13	3	5	2	16	3	51	58
Port Vale . . . . .	42	10	6	5	4	13	4	52	58
Torquay United . . . .	42	7	9	5	7	10	4	54	70
Clapton Orient . . . . .	42	10	2	9	1	16	4	53	55
Walsall . . . . .	42	9	6	6	2	14	5	68	69
Bristol Rovers . . . . .	42	8	5	8	2	14	5	55	61

### THIRD DIVISION—Northern Section

	Home.			Away.			Goals.		Pts.
	P.	W.	L.	D.	P.	W.	L.	D.	
Barnsley . . . . .	42	18	1	2	12	4	5	94	34
Doncaster Rovers . . . .	42	12	4	5	9	3	9	87	47
Bradford City . . . . .	42	16	3	2	6	9	6	89	56
Southport . . . . .	42	14	2	5	6	10	5	75	54
Oldham Athletic . . . .	42	16	4	1	6	11	4	76	59
Chester . . . . .	42	12	4	5	8	9	4	88	70
Hull City . . . . .	42	13	3	5	5	11	5	83	74
Crewe Alexandra . . . .	42	12	4	5	7	13	1	82	70
Stockport County . . . .	42	13	2	6	4	14	3	91	77
Gateshead . . . . .	42	11	4	6	3	10	8	74	67
Rotherham United . . . .	42	12	5	4	5	12	4	64	64
Halifax Town . . . . .	42	9	2	10	4	11	6	52	54
Barrow . . . . .	42	11	5	5	5	12	4	66	65
Wrexham . . . . .	42	15	4	2	2	14	5	66	79
Rochdale . . . . .	42	10	6	5	5	12	4	92	82
New Brighton . . . . .	42	11	8	2	4	10	7	68	73
Lincoln City . . . . .	42	9	6	6	3	15	3	66	92
Darlington . . . . .	42	12	7	2	1	15	5	62	92
Carlisle United . . . . .	42	10	6	5	3	16	2	64	111
York City . . . . .	42	8	8	5	4	14	3	66	92
Hartlepoons United . . .	42	10	7	4	2	16	3	55	94
Accrington . . . . .	42	6	10	5	1	19	1	49	103

**"THERE'S A BETTER SHOW**

**AT**

**STRANGE & Co."**

**== SEE OUR WINDOWS ==**

**FOR THE**

**LATEST STYLES & KEENEST PRICES**

**IN**

**MEN'S & BOYS' WEAR**

**LARGE SELECTION OF READY-TO-WEAR  
OVERCOATS—SUITS and RAINCOATS**

**ALWAYS IN STOCK**

**HATS — SHIRTS — HOSIERY — ETC.**

**MEN'S SUITS & OVERCOATS TAILORED  
TO MEASURE - - 45/- to 5 GUINEAS**

**" WE PLAY THE GAME "**

**ALL GOODS MARKED IN PLAIN FIGURES**

**H. Strange & Co. Luton's Popular Tailors**

**36/38 CHAPEL ST. (Corner of Stuart St.)**

**Phone : LUTON 1570**

# SCOTTISH LEAGUE—FIRST DIVISION

	Home.			Away.			Goals.		Pts.
	P.	W.	L.	D.	P.	W.	L.	D.	
Glasgow Rangers	38	16	0	3	9	4	6	112	55
Glasgow Celtic	28	11	5	3	9	5	5	99	53
Aberdeen	38	16	2	1	4	10	5	91	61
Hearts	38	13	5	1	7	8	4	98	70
Falkirk	38	11	4	4	8	8	3	73	63
Queen of the South	38	11	2	6	6	10	3	69	64
Hamilton Acad.	38	13	5	1	5	10	4	67	71
St. Johnstone	38	12	5	2	5	10	4	85	82
Clyde	38	10	5	4	7	11	1	78	70
Kilmarnock	38	9	4	6	6	10	3	73	86
Partick Thistle	38	12	5	2	5	12	2	74	87
Motherwell	38	12	6	1	4	11	4	82	86
Hibernian	38	9	5	5	5	12	2	68	69
Ayr United	38	8	5	6	5	11	3	76	83
Third Lanark	38	8	6	5	4	12	3	80	96
Albion Rovers	38	9	9	1	3	11	5	65	90
Arbroath	38	10	6	3	1	13	5	54	75
St. Mirren	38	8	6	5	3	14	2	57	80
Queen's Park	38	7	8	4	4	14	1	57	83
Raith Rovers	38	4	13	2	6	13	0	65	99

# SECOND DIVISION

	Home.			Away.			Goals.		Pts.
	P.	W.	L.	D.	P.	W.	L.	D.	
Cowdenbeath	34	14	0	3	14	2	1	120	45
Alloa	34	13	2	2	9	6	2	91	46
East Fife	34	12	5	0	9	2	6	99	61
Airdrie	34	13	4	0	8	4	5	85	57
Dunfermline	34	12	2	3	6	9	2	99	78
Dundee	34	11	3	3	4	9	4	99	63
St. Bernards	34	12	4	1	3	9	5	79	79
Stenhousemuir	34	11	3	3	4	11	2	74	69
Dundee United	34	12	5	0	3	11	3	78	69
Brechin City	34	8	3	6	3	11	3	82	106
Dumbarton	34	6	5	6	3	8	6	68	76
Morton	34	10	3	4	1	14	2	74	88
King's Park	34	8	7	2	4	13	0	87	92
Montrose	34	7	7	3	3	12	2	82	96
Forfar Athletic	34	9	5	3	2	15	0	74	138
Leith Athletic	34	7	7	3	3	13	1	57	83
East Stirling	34	5	9	3	4	12	1	89	130
Edinburgh City	34	4	11	2	2	13	2	58	119

# GERMATOXYL

(THE INFLUENZA MIXTURE THAT KILLS THE GERM)

V

INFLUENZA and Common Cold  
United.

There is never any doubt  
about this match. The  
dose before decides the  
result. With a dose  
after—next week's match  
**YOU** meet with laughter.

Sole Makers :

*Wootton & Webb Ltd.,*  
Chemists and Opticians,  
20, GEORGE STREET, LUTON  
And 82, HIGH STREET, HARPENDEN.

1/3, 3/- per bottle.

LONDON COMBINATION				Goals			Pts.
	P.	W.	L.	D.	F.	A.	
Arsenal	46	30	9	7	139	57	67
Queen's Park Rangers	46	26	9	11	112	60	63
Coventry City	46	27	13	6	115	57	60
LUTON TOWN	46	24	13	9	114	58	57
West Ham United	46	23	15	8	114	82	54
Chelsea	46	21	14	11	88	71	53
Brighton & Hove	46	22	17	7	75	70	51
Brentford	46	21	17	8	105	83	50
Southend United	46	17	14	15	82	65	49
Tottenham Hotspur	46	20	18	8	93	68	48
Portsmouth	46	17	17	12	82	82	46
Watford	46	17	17	12	76	87	46
Crystal Palace	46	19	20	7	92	89	45
Millwall	46	16	17	13	76	84	45
Swansea Town	46	18	20	8	67	103	44
Charlton Athletic	46	15	19	12	76	75	42
Leicester City	46	18	23	5	84	108	41
Fulham	46	14	22	10	60	93	38
Bournemouth	46	11	20	15	72	88	37
Reading	46	13	23	10	74	130	36
Bristol City	46	15	26	5	86	130	35
Southampton	46	12	24	10	71	107	34
Northampton Town	46	13	26	7	76	115	33
Clapton Orient	46	11	27	8	58	119	30

SOUTHERN LEAGUE				Goals			Pts.
	P.	W.	L.	D.	F.	A.	
Colchester United	44	31	8	5	110	37	67
Guildford City	44	30	8	6	126	52	66
Gillingham	44	29	9	6	104	57	64
Plymouth Argyle	44	26	13	5	128	63	57
Yeovil & Petters United	44	22	12	10	85	70	54
Arsenal	44	21	14	9	92	57	51
Cardiff City	44	24	17	3	105	72	51
Tunbridge Wells R.	44	22	16	6	93	76	50
Norwich City	44	23	17	4	86	76	50
Chelmsford City	44	18	18	8	74	73	44
Bath City	44	16	16	12	58	74	44
Barry	44	18	19	7	76	90	43
Cheltenham Town	44	16	19	9	76	105	41
Ipswich Town	44	14	18	12	64	76	40
Worcester City	44	13	17	14	72	90	40
Folkestone	44	16	22	6	74	85	38
Newport County	44	13	21	10	74	108	36
Exeter City	44	12	23	9	51	107	33
Torquay United	44	12	24	8	53	89	32
Swindon Town	44	11	24	9	66	101	31
Aldershot	44	12	26	6	69	92	30
Bristol Rovers	44	9	24	11	66	85	29
Dartford	44	8	31	5	53	119	21

ESTABLISHED OVER A CENTURY

# JAMES WALKER

*Goldsmith & Silversmith*  
LTD.

## 48 George Street, Luton

Telephone : Luton 1265

•  
**THE**  
**SPORTS PRIZE**  
**SPECIALISTS**

*Solid Silver Challenge Cups.*

*Century Plate Sports Cups.*

*Solid Silver Miniature Cups.*

*Century Plate Miniature Cups.*

**SOLID OAK SHIELDS, MEDALS & TROPHIES**  
**OF ALL DESCRIPTIONS**

An excellent selection at competitive prices.

*Special terms to bona fide Sports Clubs*

Illustrated Price List on Application

•  
**WEAR A WALKER WATCH**

## Hitchin Town F.C.

### ATHENIAN LEAGUE

1939		1940	
Aug. 26—Southall	....A	Jan. 13—Wealdstone	..H
Sept. 2—Southall	....H	" 27—Golders Grn.	..A
" 6—Finchley	....A	Feb. 10—Leyton	.....H
" 9—Sutton	.....A	" 24—Wealdstone	..A
" 13—Finchley	....H	Mar. 2—Barnet	.....H
" 16—Luton Amateur		" 9—Redhill	.....A
(F.A. Cup)		" 16—Bromley	....H
" 23—Barking	....A	" 22—Hayes	.....A
" 30—F.A. Cup		" 23—Tooting	....A
Oct. 7—Tooting	....H	" 25—Hayes	.....H
" 14—Leyton	.....A	" 30—Barking	....H
Dec. 2—Barnet	.....A	Apl. 6—Golders Grn.	..H
" 25—Enfield	.....A	" 13—Sutton	.....H
" 26—Enfield	.....H	" 20—Redhill	....H
		" 27—Bromley	....A

## Letchworth Town F.C.

### SPARTAN LEAGUE

1939		Dec. 2—Slough	.....A
Aug. 26—Luton T. "A"		" 9—Hoxton Mnr.	..A
at Bedford.. (F)		" 16—Wood Green	..A
" 30—Hitchin Tn.		" 26—Hertford Tn.	..H
(H.C.C.)	....H	1940	
Sept. 2—Aylesbury U.	..A	Jan. 20—Aylesbury U.	..H
" 6—Cambridge T.	..H	" 27—Metro. Police	..A
" 9—Maidenh'd U.	..H	Feb. 3—Lyons Club	..A
" 16—Hoxton Mnr.	..H	" 17—Wood Green	..H
" 21—Cambridge T.	..A	" 24—Chesham U.	..A
" 30—F.A. Cup		Mar. 2—Metro. Police	..H
Oct. 7—Waterlow's	..A	" 9—Windsor & E.	..H
" 14—Windsor & E.	..A	" 16—Maidenh'd U.	..A
" 28—Waterlow's	..H	" 23—Marlow	.....A
Nov. 4—Chesham U.	..H	" 25—Hertford T.	..A
" 18—Luton Tn. "A"		" 30—Marlow	.....H
(Friendly)	..H	Apl. 20—Lyons Club	..H
		" 27—Slough	.....H

The "MECCA"



MOTOR-CYCLIST!

**CLAREMONT  
GARAGE**

60a, LEAGRAVE ROAD  
LUTON

*Specialising in*  
**MOTOR-CYCLE SPARES & REPAIRS**

ALL MAKES

★ WE BUY, SELL AND EXCHANGE  
"ONCE TRIED — SATISFIED"

## Bedfordshire County Football Association

Hon. Secretary and Treasurer:

Mr. Albert E. Ansell, 32, King Street, Luton.

### AFFILIATED LEAGUES AND COMPETITIONS

Bedford County Hospital Cup. A. J. Fielder, Post Office, Kempston.

Bedford and District League (1919). E. W. Taylor, 3, Westfield Road, Bedford.

Bedford and District Thursday Cup (1908). D. Butler, 89, Salisbury Street, Bedford.

Bedford and District Thursday League (1906). D. Butler, 89, Salisbury Street, Bedford.

Beds Constabulary A.C. Challenge Cup (1928). P.C. R. Winser, Police House, Heath and Reach, Leighton Buzzard.

Biggleswade and District League (1908). A. H. Scott, 62, The Baulk, Biggleswade.

Leighton Football League. W. H. Bonfield, 33, Vandyke Road, Leighton Buzzard.

Leighton and District Cup (1913). W. H. Bonfield, 33, Vandyke Road, Leighton Buzzard.

Leighton Knock-Out Shield. W. H. Bonfield, 33, Vandyke Road, Leighton Buzzard.

Luton and District South Beds Football League. H. A. Chambers, 160, Hitchin Road, Luton. (Phone: Luton 3138).

Luton Wednesday League. H. T. Hill, 18, Churchill Road, Luton.

Luton Wednesday Challenge Cup. H. T. Hill, 18, Churchill Road, Luton.

Luton Wednesday Junior Challenge Cup. H. T. Hill, 18, Churchill Road, Luton.

North Beds Charity Cup (1907). A. H. Scott, 65, The Baulk, Biggleswade.

South Midlands League (1922). A. E. Ansell, 32, King Street, Luton.

South Beds Minor League. A. E. Ansell, 32, King Street, Luton.

East Beds Minor League. W. T. Bates, 81, Church Street, Langford, Beds.

Bedford Minor League. R. A. Baker, 32, Cavendish Street, Bedford.

## CLUBS IN BEDFORDSHIRE

a Secretary's name and address. b Ground.  
c Club colours.

Albion Rovers (Luton).—a J. Reader, 66, Wenlock Street, Luton. b No. 7, Bell Close. c Blue shirts, white knickers.

Aley Green Athletic.—a V. S. Banks, 112, Mancroft Road, Aley Green, near Luton. b Aley Green Meadow. c Royal blue shirts with red facings, black knickers.

Arlesey Town.—a R. G. Cheshire, "Cheniston," Arlesey, Beds. b The Bury Meadow. c Light and dark blue shirts (halves), black knickers.

Arnold's Sports (Leighton Buzzard).—a W. T. Woolhead, 7, Mill Road, Leighton Buzzard. b Grovebury Road. c Yellow and blue shirts (quarters), white knickers.

Aspley Guise and Woburn Sands.—a W. E. Jones, 3, Salford Road, Aspley Guise, near Bletchley. b Bedford Road. c Red shirts, white knickers.

Bedford Alexandria Thursday.—a E. G. Lilley, 6, Westbourne Road, Bedford. b Russell Park. c Black and red shirts (quarters), black knickers.

Bedford Catholic.—a The Secretary, 19a, The Crescent, Bedford. c Green shirts, black knickers.

Bedford Celtic.—a S. H. Proctor, 3, Westbourne Road, Bedford. b Gas Athletic. c Red and white shirts (vertical stripes), black knickers.

Beds Constabulary.—a R. Winser, Police House, Heath and Reach, Leighton Buzzard. c Black and amber shirts, white knickers.

Bedford Electricity Works.—a H. Blackwell, 7, Gratton Road, Bedford. c Maroon and sky shirts (quarters), white knickers.

Bedford Gas Athletic.—a N. F. Jeffries, 35, Dunville Road, Bedford. b Lawrence Street. c Royal blue shirts, white knickers.

Bedford Igranic.—a S. W. Worker, 5, Church Walk, Kempston, Beds. b Igranic Sports. c (1st XI.) White and green quarters, black knickers. (2nd XI.) Black and green quarters, black knickers.

Bedford Loco.—a H. Southby, 17, York Street, Bedford. b Bedford Park. c Black and white quarters, black knickers.

Bedford Meltis.—a G. E. P. Wilson, 6, Southville Road, Bedford. b Miller Road. c Maroon and white quarters, blue knickers.

Bedford Monarchs.—a H. Coony, 34, Fenlake Road, Bedford. b Russell Park. c Maroon, amber collar and cuffs, black knickers.

Bedford North End.—a A. P. Spindler, 18, Hazelwood Road, Bedford. b Russell Park. c Red shirts, black knickers.

Bedford Post Office.—a D. Butler, 89, Salisbury Street, Bedford. b Russell Park. c Black and white stripes, black knickers.

Bedford Rovers.—a W. Harper, 4, Wellington Street, Bedford. b Bedford Park. c Black and red quarters, black knickers.

Bedford St. Cuthberts.—a S. G. Harris, 45, Dudley Street, Bedford. b Russell Park. c Black shirts with amber V, black knickers.

Bedford Town.—a C. J. Franklin, 8, Windsor Place, St. Cuthberts Street, Bedford. b Off Ford End Road. c White shirts, black knickers.

Biggleswade and District.—a Ivor C. Davies, 8, The Dells, Biggleswade. b Fairfield. c Green shirts, white knickers.

Biggleswade United.—a R. Scott, 36, Rose Lane, Biggleswade. b Fairfield. c Royal blue shirts with white V, white knickers.

Biscot Sports.—a W. S. Adams, 1, Mostyn Road, Luton. b Blundell Road Recreation Ground. c Black and amber squares, black knickers.

Britannia Works (Bedford).—a A. Loosley, 32, St. Leonards Street, Bedford. b Barker's Lane. c Red and white shirts, black knickers.

Bromham.—a B. Everest, The Laurels, Bromham Green, Bedford.

Bromlea United (Luton).—a V. Tysome, 16, Maidenhall Road, Luton

Brown and Green's Athletic Club.—a W. G. Payne, 31, Dorset Street, Luton. b Pope's Meadow. c Green with brown facings, black knickers.

Brynwood United (Luton).—a R. W. Day, 23, Claremont Road, Luton. b Stockwood Park. c Green with white facings, white knickers.

Campton.—a J. Godfrey, 13, Gravenhurst Road, Campton, Beds. b The Recreation Ground. c Black and amber, black knickers.

Carlton United.—a T. H. Gardner, Sandhurst, Carlton, Bedford. b Chellington Church Field. c Blue jerseys with white facings, white knickers.

Chaul End Clarence (Luton).—a E. A. Bangs, Chaul End, Caddington. b Cripps Meadow. c Claret, amber quarters, black knickers.

Chapel Street Wanderers (Luton).—a R. Game, 34, Maple Road, Luton.

Christ Church Institute.—a Thomas C. Potts, 24, Napier Road, Luton. b Chaul End Lane. c Black and white halves, black knickers.

## DEFEAT WINTER'S WHIRLWIND ATTACK

FORTIFY YOUR DEFENCE WITH  
**LUTONIAN CHEST AND  
LUNG MIXTURE** and Banish all  
signs of Coughs, Colds & Bronchial  
Troubles.

**2/9** I am offering a  
2/9 bottle for 1/3 *for* **1/3**  
A price within  
the reach of all

**Why SUFFER ANY LONGER!  
GET A BOTTLE TODAY!**

only obtainable from—

**McLAREN THOMSON**

*Luton's Leading Herbal Practitioner*

**30 STUART STREET, LUTON**

(UNDER THE CLOCK)

ADVICE FREE

Christ Church Athletic.—a G. W. Hurley, 233, Beechwood Road, Luton. b Chaul End Lane. c Claret and sky, white knickers.

Clapham.—a S. T. Bowyer, 202, High Street, Clapham. Commer Karrier (Luton).—a Mr. H. F. Currant, 60, Flint Hyde, Luton Hoo. b Blundell Road Recreation Ground. c Green shirts, black knickers.

Corinthians (Bedford).—a F. Yorks, 9, Howbury Street, Bedford. b Bedford Park. c White shirts, black knickers.

Cundall Athletic and Sports Club.—a S. C. Jay, c/o Cundall Folding Machine Co., Ltd., Luton. b Ashcroft Road. c Emerald Green with black facings, white knickers.

Dallow Rangers (Luton).—a G. A. Ginger, 1, Dallow Road, Luton. c Blue shirts, white facings, white knickers.

Dickens (Harrold).—a A. O. Lyman, c/o R. Dickens, Ltd., Harrold Bedford. b "Conergeres." c Blue, white facings, white knickers.

Dulve and Eaton.—a A. V. Trolley, 15, Buckley Road, Eynesbury. b Opposite "George and Dragon." c Blue and white quarters, blue or white knickers.

Dunstable Argyle.—a W. J. Smith, 11, Kirby Road, Dunstable. b Recreation Ground. c Black and white quarters, black knickers.

Dunstable Early Closers.—a D. Ebdon, 4, Park Road, Dunstable. b Bull Pond Lane. c Red and white, white knickers.

Dunstable Wanderers.—a A. C. Coles, 11, Park Avenue, Houghton Regis.

Dunstable North End.—a E. J. Bell, 42, Northfields, Dunstable. b Northfields Recreation Ground. c Navy and white quarters, black knickers.

Dunstable Rosedale.—a Sydney A. West, 100, Northfields, Dunstable. b Luton Road Recreation Ground. c Red and white, white knickers.

Dunton.—a R. Humberstone, 24, High Street, Dunton. b Millow. c Light blue, navy facings, white knickers.

Eastern National (Bedford).—a F. Bradshaw, 41, London Road, Bedford.

Elstow Works.—a A. W. Haynes, c/o London Brick Co., Elstow Works, Bedford.

Elstow Abbey.—a D. S. Cooper, 4, West End, Elstow. b The Warren. c White, black knickers.

Everton.—a S. Wisson, Warden Hill Farm, Everton.

Exiles (Bedford).—a F. Bidwell, 194, Castle Road, Bedford.

Flitwick Victory Hall Juniors.—a, Eric Bonner, 47, Chapel Road, Flitwick. b Recreation Ground. c Red shirts black knickers.

# Well Saved /



MR. THERM  
WILL SAVE  
YOU

TIME  
TROUBLE  
TEMPER

See the Latest

*Gas Appliances*  
at the Showrooms

**LUTON GAS COMPANY**  
GEORGE STREET AND DUNSTABLE ROAD

G.A.S. (Dunstable).—a S. Cadman, Dunstable Gas & Water Company, High Street North, Dunstable. b rear of Gas Works. c White shirts, blue knickers.

Girtford Rovers.—a A. E. Ibbott, 91, London Road, Sandy. b The Drift. c Royal blue, white facings, white knickers.

Goldington.—a H. J. Luff, 46, York Street, Bedford. b Goldington Green. c Emerald and amber, black knickers.

Griffin Athletic (Bedford).—a E. J. Tyrell, 5a, Midland Road, Bedford. b Russell Park. c Blue and white squares, white knickers.

Griffin Athletic (Luton).—a P. V. Bonfield, 74, George Street, Luton. b Pope's Meadow. c Blue and white quarters, white knickers.

Great Barford.—a E. C. Pursehouse, School House, Great Barford. b Bridge Farm or Fishers Close. c Red and white, white knickers.

Harrold United.—a E. D. Pakes, Lunfird, Wood Road, Harrold, Bedford. b Conegeres. c White shirts, black knickers.

Harpur United (Bedford).—a E. Toms, 29, Holme Street, Bedford. b Bedford Park. c Red and green halves, black knickers.

Haynes.—a A. Wilsher, 93, Silver End Road, Haynes, Bedford. b North Lane Field. c Black and white stripes, black knickers.

Heath United.—a G. Rolls, 12 Sheepcote Corner, Heath. b Hand-post field. c Scarlet, white facings, white knickers.

Henlow.—a P. Webb, Henlow, Beds.

Houghton Rangers.—a E. G. Bird, 12, Douglas Crescent, Houghton Road, Dunstable. b The Village Green. c Red with white facings, white knickers.

Hubbards Sports.—a A. E. Diss, 110, Farley Avenue, Luton. b Farley Hill. c White, black facings, black knickers.

Husborne Crawley.—a T. W. Barnes, 89, Church Street, Bletchley. b Village Ground. c Scarlet and amber halves, white knickers.

Ickwell.—a G. Reeks, 11, Warden Road, Ickwell, Biggleswade. b Northill. c White shorts, black knickers.

Interlock.—a R. A. Lingard, 102, Mile Road, Bedford. b Russell Park. c Red and black quarters, white knickers.

Kempston Rovers.—a A. J. Fielder, Post Office, Kempston.

Kent's Athletic (Luton).—a c/o. Geo. Kent, Ltd., Luton.

FOR **THE CUP!** THAT CHEERS

visit

**"KITTY'S CAFE"**

94 DUNSTABLE RD., LUTON

TWO MINUTES  
FROM THE GROUND

*Breakfasts - Lunches - Teas - Suppers*

**SNACK BAR**

*Bed and Breakfast - Popular Prices*

Also visit the

**"WILLIAMSON CAFE"**

(BUS STOP - WILLIAMSON ST., LUTON)

Kingsdale United (Luton).—a R. Smith, 14, Malvern Road, Dunstable.

Kempston Green End United.—a L. Jeffrey, 7, Green End, Kempston, Bedford. b Green End. c Green with white facings, black knickers.

Keysoe.—a S. G. Chapman, School House, Keysoe, Bedford. b Keysoe Row. c White, blue knickers.

Langford.—a W. Bates, 81, Church Street, Langford, Biggleswade. b Near Vicarage. c Red, white knickers.

Leighton United.—a E. Brinklow, 3, Leighton Road, Leighton Buzzard. b Wayside Sports Ground. c Royal blue, white facings, white knickers.

Leighton Wanderers.—a W. A. Matthews, 58, Old Road, Linslade, Leighton Buzzard. b Pages Park. c White, black knickers.

Lidlington United.—a H. Vaughan, 7, The Grove, Lidlington. b Thrupp End Farm. c Red, white knickers.

London Brick Co. (Coronation Works).—a The Football Secretary, c/o Coronation Works, Kempston, Hardwick, Bedford. b Elstow Works. c White, blue knickers.

London Transport (Luton Depot).—a F. L. Visick, 25, Park Street West, Luton. c White, black facings, black knickers.

Luton Amateur.—a F. C. Crain, 6, Chandos Road, Luton. b Stockingstone Road, Luton. c Red and white stripes, black knickers.

Luton Borough Police.—a P. C. W. Jackson, c/o Police Headquarters, Luton. b Stockwood Park, Luton. c Black with red V, white knickers.

Luton Boys' Club.—a R. R. Cox, 87, St. Paul's Road, Luton. b Stockwood Park. c Blue and white quarters, black knickers.

Luton Brewery.—a E. Elson, The Brewery, Luton. b Farley Hill. c Green shirts, white facings, white knickers.

Luton Clarence.—a P. Emerton, "Kayrie," Ashcroft Road, Stopsley. b Pope's Meadow. c Claret, white facings, black knickers.

Luton Co-op.—a A. Barth, 21, Coniston Road, Limbury. b Stockingstone Road. c Black and amber quarters, black knickers.

Luton Corinthian Athletic.—a A. Draper, 37, Fitzroy Avenue, Luton. b Stockwood Park. c Green and white hoops, black knickers.

Luton Corinthian Athletic (Luton & South Beds League team).—a G. Harris, 95, Russel Rise, Luton. b Stockwood Park. c Green and white hoops, black knickers.

Luton Crusaders.—a G. A. Bailey, 88, St. Peter's Road, Luton. b Pope's Meadow. c Red with white sleeves.

# Charnley

and Sons

---

CONSULTING OPTICIANS

---

NATIONAL HEALTH INSURANCE

---

ON THE H.S.A. OFFICIAL LIST  
OF OPTICIANS

---

11, WELLINGTON STREET  
LUTON

TELEPHONE - - - LUTON 1808

Luton Davis Athletic.—a R. H. Sharpe, 272, Biscot Road, Luton. b Dallow Road. c Red and black, black knickers.

Luton Gasworks Athletic.—a Mr. F. Coote, c/o Luton Gasworks, Dunstable Road Luton. b Dallow Road. c Navy and amber quarters, black knickers.

Luton Hamilton.—a L. E. H. Fox, 15, Hastings Street, Luton. b Bells Close. c Red and white, navy knickers.

Luton Park Street Athletic.—a J. P. Whiting, 51, Harcourt Street, Luton. b Pope's Meadow. c Maroon and white, dark blue knickers.

Luton Postals.—a A. J. E. White, G.P.O., Luton. b Blundell Road. c Red and black quarters, black knickers.

Luton Rangers.—a T. Palmer, 51, Dudley Street, Luton. b No. 5 Pope's Meadow. c Red with white facings, white knickers.

Luton Town.—a A. E. Wickson, 70/72, Kenilworth Road, Luton. b Kenilworth Road. c White shirts, black knickers.

Luton Wednesday Ridgway.—a W. Hinds, 58, Richmond Hill, Luton. b Farley Hill. c Red and white, white knickers.

Luton Rovers.—a B. E. Bell, 73, Kingsway, Luton. c blue with yellow facings, black knickers.

Lynton Works.—a W. R. Hoare, Lynton Works, Bedford. b Cosmic Playing Field. c Blue and yellow, blue knickers.

Marley Tile Co., Leighton Buzzard.—a G. Simpson, 38, St. Andrew's Street, Leighton Buzzard. b Bridge Street. c Green and amber, black knickers.

Marston Rovers.—a H. J. Porter, 154, Bedford-road, Marston Morteyne, Beds. b The Bell Field. c Red and white, white knickers.

Marston Shelton.—a G. E. Gillett, 174, Lower Shelton Road, Marston Morteyne, Bedford. b Upper Shelton. c Claret and sky quarters.

Milldale United.—a E. A. Williams, 47, Linden Road, Leagrave. b Lewsey. c Red with white facings, white knickers.

Nalco.—a S. J. Mayo, Public Health Department, Town Hall, Luton. c Red, white, blue and black stripes, black knickers.

Norton Rangers.—a G. Hutchins, 6, Tavistock Street, Luton. b Stockwood Park. c Red with white facings, white knickers.

## PLAY THE GAME BETTER

WITH

## BETTER EQUIPMENT

FROM

## H. V. CROOKE

THE COMPLETE SPORTS' OUTFITTER

3, NEW BEDFORD ROAD, LUTON

NEXT "ALMA" CINEMA

- FOOTBALL
- FISHING TACKLE
- CRICKET
- GUNS
- TENNIS
- GAMES

USUAL CLUB DISCOUNTS

Podington.—a G. Wildman, Greys House, Podington, Wellingborough.

Phoenix (Bedford).—a C. M. Taylor, 15/17, High Street, Bedford. b Russell Park. c Gold and blue quarters, blue knickers.

Queen's Works (Bedford).—a K. P. Wesley, 29, Old Ford Road, Bedford. b Allen Park. c 1st team Royal blue, white knickers; 2nd team blue and white quarters, white knickers.

Queen's Park Rangers (Bedford).—a L. H. Shadrake, 6, Havelock Street, Bedford. b Cardington ground. c Navy blue and white quarters, white knickers.

R.A.F. Cardington.—a W. G. Goodyear, No. 2 R.A.F. Depot, Cardington, Bedford. b On Camp. c Dark blue and light blue halves, dark blue knickers.

Royal Air Force, Henlow.—a Officer I/c Association Football, Royal Air Force, Henlow Camp. b Henlow Camp. c Red shirts, white knickers.

B.B.S. Sports, Kempston.—a A. Blank, 33, Ditman Avenue, The Hoo, Kempston, Bedford. b Off Spring Road. c Scarlet with white facings, white knickers.

Renhold United.—a W. Scott, Three Horse Shoes, Renhold, Beds. b Three Horse Shoes. c Red shirts.

Ridgmont Bepres.—a J. H. Braval, 43, Highfield Crescent, Brogborough Estate, Ridgmont.

Ridgmont Rovers.—a W. Hirdle, 94, Church Street, Ridgmont. b Sedgenhoe. c White shirts, black facings.

Sandy Albions.—a S. Daniels, 105, St. Neots Road, Sandy. b Recreation Ground, Bedford Road. c Black and white stripes, black knickers.

Shefford Athletic.—a R. T. Johnson, 11, North Bridge Street, Shefford, Beds. b Shefford, Hardwicke. c Sky and claret quarters, black knickers.

Shillington Athletic.—a D. Twydell, 23, Church Street, Shillington. b High Road. c Blue and white, white knickers.

Skefko Athletic.—a R. Reeve, Skefko Works, Luton. b Farley Hill. c Maroon and sky stripes, white knickers.

St. Andrew's Robin Hoods (Woodside).—a H. Hawkins, 79, Front Street, Slip End, Luton. b Stockwood Park. c Green and white quarters, black knickers.

St. Cuthbert's Thursday (Bedford).—a R. Meads, 2, The Grove, Bedford. b Russell Park. c Red and white stripes, black knickers.

Stevington.—a Alan Cox, Court Lane, Stevington, Bedford. b Mill Field. c Blue and amber squares, black knickers.

# QUALITY CLEANERS

*Expert Cleaning and Dyeing Service*

**NEW ARCADE, DUNSTABLE ROAD**

**ONLY 2 MINUTES FROM THE GROUND**

**Leave your Parcels on your way to the Match**

**All Garments Cleaned Like New!**

## LADIES' WEAR

Costumes (2 piece) 2/9; Silk Blouses, 1/9; Skirts (plain) 1/6; Dresses (Silk, plain) 2/9; Evening Dresses (plain) 4/6; Coats, 2/9; Coats (with Fur) 3/6; Hats (cleaned and blocked) 1/9; Fur Coats, from 12/6; Dressing Gowns (Wool) 2/6; Dressing Gowns (Silk) 3/0; Satin Shoes, 1/6

## GENTLEMEN'S WEAR

Lounge Suits, 2/9; Trousers, 1/3; Jackets, 1/6; Overcoats (light) 2/9; Overcoats (heavy) 3/3; Dress Suits, 4/6; Ties, 3d.; Hats (cleaned & blocked) 1/11; Surface Cleaning and Pressing Suits and Overcoats, 1/9

**SUITS, COSTUMES AND DRESSES  
DYED STANDARD COLOURS, 6/6**

**RAINCOATS (cleaned and re-proofed) 4/11**

Prices for all types of Household  
Goods on application

**FOR**

**FREE COLLECTION & DELIVERY**

*'Phone LUTON 3512*

Stewartby Works.—a E. H. Abraham, 56, Stewartby, near Bedford. b Recreation Ground. c Red shirts.

Stondon Rangers.—a H. J. Downing, 101, Station Road, near Henlow Camp, Stondon. b Upper Stondon. c White shirts, black knickers.

Stonehenge Bricks.—a N. Bastow, c/o Stonehenge Bricks Ltd., Mile Tree Road, Leighton Buzzard. b Vandyke Road. c Red shirts with white facings, white knickers.

Stopsley.—a J. Hall, 25 Ryecroft Way, Stopsley.

Stopsley United.—a R. G. Toyer, 29, Cannon Lane, Luton. b Buttersfield Green. c Blue and white, black knickers.

Sundale.—a F. Lightfoot, 139, Selbourne Road, Luton. c Red with white sleeves, white knickers.

Sundon St. Mary's.—a R. Cooper, 43, Streatley Road, Sundon.

Springdale (Luton).—a C. Anderson, 14, Corncastle Road, Luton.

Shortstown (Bedford).—a G. Angus, 2, North Drive, Shortstown.

Tempsford.—a F. G. Quince, 26, Station Road, Tempsford, Sandy.

Three Counties Hospital (Arlesey).—a Rev. R. B. Secombe, The Chaplaincy, Arlesey, Beds. b Adjoining Hospital. c Green and white, white knickers.

Toddington Rovers.—a Alec Crees, Princess Street, Toddington. b Dropshort Farm. c Black and white stripes.

Totternhoe Athletic.—a L. A. Turvey, Lower End, Totternhoe. b Recreation Ground. c Black and white quarters, black knickers.

Vauxhall Motors (Luton).—a K. Edge, Vauxhall Motors Ltd., Luton. b Adjoining Works. c Blue and gold, black knickers.

Waterlow's (Dunstable).—a W. W. Goodyear, 17, Totternhoe Road, Dunstable. b Main Road, Dunstable.

West End United (Kempston).—a G. C. Bowler, The Cottage, West End, Kimpton. b Three Horseshoes. c White with blue facings, blue knickers.

Westoning.—a C. Northwood, 19, Church Road, Westoning.

Westoning.—a C. Northwood, 19, Church Road, Westoning. b Recreation Ground. c Myrtle green.

Whipsnade Zoo.—a A. Blake, Whipsnade Park, Dunstable. b Whipsnade Park. c Royal blue, white knickers.

WE DON'T WANT TO BE 'FORWARD'

*BUT* we feel bound to draw your attention to

## *THE VALUES*

*We offer in*

## **HIGH-CLASS GENTS' TAILORING & OUTFITTING**

Come to

# **BERT MINNEY**

*43, HIGH TOWN ROAD, LUTON*

FOR THE

## **Best Quality & Styles IN LUTON**

*SHIRTS • SOCKS • TIES • HATS*

## **"CIVILITY and SERVICE"**

**Wilstead United.**—a Wm. Caves, 1, Council Houses, Wilstead, Beds. b Near Cross Roads. c Blue and amber.  
**Woburn Athletic.**—a J. Deacon, The Tap, Woburn. b Leighton Street, Woburn. c White shirts, black knickers.

**Wootton Blue Cross.**—a H. Tysoe, 78, Bedford Road, Wootton. b Recreation Ground. c 1st team, Navy blue and sky quarters; 2nd team Light blue and white stripes, navy knickers.

**Wrestlingworth.**—a B. Deeble, 1, Tadlow Road, Wrestlingworth. b Church Meadow. c Claret and amber, white knickers.

**Wyboston.**—a A. Asplin, Wyboston, Bedford. b Manor Farm, Wyboston. c Red with white V, white knickers.

**Wymington.**—a G. Wood, 101, Rushden Road, Wymington. b Podington Road. c Red and black, white knickers.

**Kingsdale United.**—a R. Smith, 14, Malvern Road, Luton. b No. 2 Pope's Meadow.

**Hayward-Tyler's.**—a G. Blackwell, c/o Hayward-Tyler's, Ltd., Crawley Green Road, Luton. b Farley Hill. c Blue with red collar and cuffs, black knickers.

**Lilley St. Peter's.**—a A. Tuttlebury, 4, Council Cottages, Lilley, near Luton. b Lilley. c Blue and white shirts, black knickers.

**Spandit Sports.**—a Football Secretary, c/o Spandit Sports and Social Club.

**Luton Catholic Guild.**—a C. J. Tilcock, 12, Harcourt Street, Luton. b Pope's Meadow. c White and gold, black knickers.

**Caddington.**—a Norman Blake, 8, Meadow Way, Caddington, near Luton. b Caddington. c White shirts, black knickers.

**Blundell's Sports.**—a Frank Foy, 30, Carisbrooke Road, Luton. b Lewsey. c Red shirts, white collars and cuffs, black knickers.

**Blenheim Athletic.**—a G. Mitchell, 6, Farley Hill, Luton. b Lewsey. c Black and amber, black knickers.

**Eaton Bray.**—a R. F. Weedon, 72, Bowers Lane, Eaton Bray, Dunstable. b Eaton Bray Recreation Ground. c Blue and white quarters, white knickers.

**Luton St. Margaret's.**—a Henry Taberner, 65, St. Catherine's Avenue, Luton. b Lewsey.

**Manor Park Rangers.**—a V M Lea, 24, Cambridge-street, Luton. b Pope's Meadow. c Light blue, white collars and cuffs, white knickers.

**Kensworth.**—a H. B. Moulster, c/o The Nurseries, Watling Street, Kensworth, Beds. b Kensworth Recreation Ground. c White shirts, black knickers.



FERD'NAND LOOKS  
**HALF BACK**

**YOU WILL LOOK FORWARD**

To his adventures every night in the

**Evening Telegraph**

# LUTON DISTRICT AND SOUTH BEDS. LEAGUE



**President:** Col. Sir H. A. Wernher, K.C.V.O.

## Life Members:

Chas. Green, Esq., J. J. Hunt, Esq., F. W. Haddon, Esq.

**Chairman:** Wm. Pease, Esq.

**Vice-Chairman:** Sidney Smith, Esq.

**Hon. Treasurer:** W. J. Emery, Esq.

## Hon. Auditors:

Messrs. Chas. Green and Donald O. Williams.

## Executive Council:

Messrs. F. C. Crain, F. Gowing, P. Stevens, A. E. Wickson and the officers.

## Emergency Committee:

Chairman, Vice-Chairman and Hon. Secretary.

## Hon. Referee and Match Secretary:

H. Pearce, 14, Sherwood Road, Luton.  
'Phone, Luton 3139.

## Hon. General Secretary:

H. A. Chambers, 160, Hitchin Road, Luton.  
'Phone, Luton 3138.

# Luton District & South Beds. League

## FINAL TABLES FOR SEASON 1938-1939

DIVISION I.							
	P.	W.	D.	L.	F.	A.	P.
Luton Corinthians Athletic	22	18	2	2	106	25	38
Toddington Rovers	22	14	3	5	63	31	31
Skefko Athletic	22	14	1	7	85	47	29
Commer-Karrier	22	12	3	7	49	39	27
Vauxhall Motors "A"	22	10	6	6	84	72	26
Dunstable Wanderers	22	9	6	7	49	46	24
Spartan	22	9	4	9	52	41	22
Stonehenge Bricks	22	8	2	12	68	87	18
Wheathampstead United	22	6	3	13	47	78	15
St. Andrew's Robin Hoods	22	5	4	13	54	95	14
Shillington Athletic	22	6	2	14	42	74	14
Bagshawe's (Dunstable)	22	3	0	19	36	100	6

DIVISION II.							
	P.	W.	D.	L.	F.	A.	P.
Hubbard's Sports	24	19	3	2	110	30	41
Stopsley United	24	18	2	4	92	38	38
Sundale	24	13	7	4	90	46	33
Dunstable Argyle	24	14	3	7	74	45	31
Luton Brewery	24	13	4	7	78	71	30
Luton Clarence	24	12	3	9	71	60	27
Kent's Athletic	24	12	1	11	72	72	25
Christ Church Institute	24	9	6	9	54	65	24
Harpenden N.C.H.	24	10	1	13	76	90	21
Rob Roy	24	8	3	13	62	66	19
Luton Boys' Club Athletic	24	6	1	17	47	112	13
Arnold's Sports	24	2	4	18	25	88	8
Brown & Green's Athletic	24	2	0	22	34	102	4

DIVISION III.							
	P.	W.	D.	L.	F.	A.	P.
Aley Green Athletic	24	19	4	1	105	32	42
Dunstable Rosedale	24	19	3	2	124	29	41
Vauxhall Juniors	24	15	5	4	96	41	35
Heath United	24	13	4	7	70	54	30
Chaul End Clarence	24	13	3	8	93	61	29
Luton Crusaders	24	10	6	8	83	48	26
Luton Brewery "A"	24	11	1	12	57	69	23
Leighton Boys' Club	24	10	2	12	59	63	22
Totternhoe Athletic	24	9	2	13	61	68	20
Hockliffe	24	6	6	12	43	90	18
Toddington Rovers "A"	24	6	1	17	55	100	13
Hubbard's Sports Reserves	24	5	2	17	41	110	12
Kingsdale United	24	1	1	22	32	154	3

# DIVISION IV.

	P.	W.	D.	L.	F.	A.	P.
Luton Norton Rangers	26	23	1	2	148	27	47
Luton Davis Athletic	26	22	2	2	146	26	46
Luton Rangers	26	20	2	4	97	40	42
Houghton Rangers	26	17	1	8	126	67	35
Skeiko Athletic "A"	26	14	3	9	74	47	31
Luton Lyndale	26	13	0	13	107	89	26
Westoning	26	12	1	13	82	42	25
Luton Argyle	26	12	1	13	68	71	25
Albion Rovers	26	11	3	12	51	105	25
Stopsley	26	8	1	17	59	96	17
Commer-Karrier "A"	26	6	3	17	35	128	15
Luton Boys' Club Rangers	26	5	1	20	44	131	11
Sundon St. Mary's	26	4	2	20	40	121	10
Luton Hamilton	26	4	1	21	50	137	9

# DIVISION V.

	P.	W.	D.	L.	F.	A.	P.
Kingsbury United	26	23	1	2	104	22	47
Dallow Rangers	26	19	3	4	135	35	41
Christ Church Institute	26	18	4	4	96	47	40
Dunstable Rosedale "A"	26	17	2	7	107	56	36
Flamstead Sports	26	15	2	9	74	50	32
Bromlea United	26	15	2	9	86	61	32
Brynwood United	26	11	3	12	67	56	25
Springdale	26	10	1	15	84	103	21
Dunstable North End	26	10	1	15	69	89	21
Luton Rangers "A"	26	9	1	16	65	117	19
Lilley St. Peter's	26	7	2	17	74	110	16
Kent's Athletic Juniors	26	7	1	18	59	119	15
Hayward-Tyler	26	5	2	19	50	107	12
Milldale United	26	3	1	22	47	145	7

**FOOTBALL ! FOOTBALL !**

**PHONE YOUR RESULTS  
BY 5 p.m. SATURDAY**

To secure publication in that day's issue of the  
BEDS. & HERTS.

**Evening Telegraph**

PHONE 2500 LUTON (6 Lines)

**THERE'S ONLY ONE RESULT !**

FROM A VISIT  
TO THE

**"WHITE ROSE"**

RESTAURANTS & BUFFETS

**COMPLETE SATISFACTION!**

OUR SPECIALITY

IS A

**GOOD CUP OF TEA**

AND

**GOOD FOOD**

TO GO WITH IT !

RESTAURANTS : CORN EXCHANGE—PARK ST.  
& WINDMILL ROAD.

BUFFETS : CHURCH ST.—GUILDFORD ST.,  
LEAGRAVE RD. & UNION ST.

CONFECTIONERS : 35, WELLINGTON STREET &  
48, HIGH TOWN ROAD.

TRY OUR NOTED FRUIT-CAKES

PORK PIES & DELICIOUS SANDWICHES

All kinds of Outside Catering ESTIMATES FREE

# GOAL!

*and YOUR Goal if  
You want the Best  
in*

**PIANOS  
RADIO**

*and*  
**TELEVISION**

*is*

## **FARMER'S**

**Opposite Town Hall - Luton**  
**also at 2 Church Street - Dunstable**