

The Luton News

FOOTBALL HANDBOOK

1949

1950

On all
grounds . .



*Player's
Please*



PLAYER'S NAVY CUT CIGARETTES · MEDIUM OR MILD
INCC 66241

YES, of course



**TRY
STRANGES
FIRST**

for

**DRESS MATERIALS
FURNITURE & FURNISHINGS**

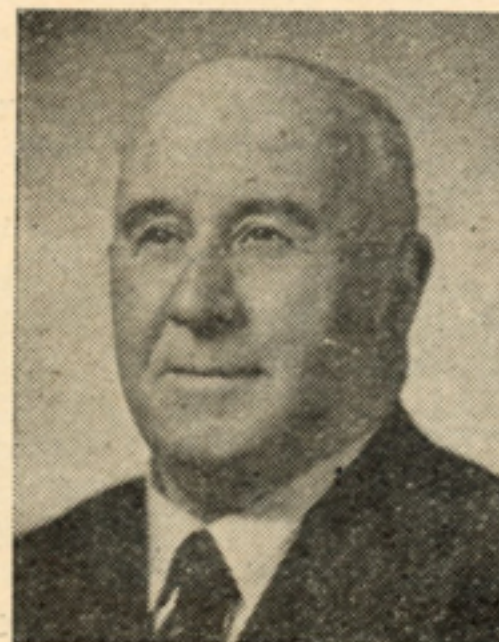
STRANGES

34-40, Wellington Street, LUTON

Estd. 1832

E. Strange & Sons, Ltd.

Luton Town Football and Athletic Club Ltd.



**The President and Chairman
MR. CHARLES JEYES, C.A.**

Directors:

Chairman: Mr. Charles Jeyes.

Messrs. P. G. Mitchell (**Vice-Chairman**), F. J. Andrews,
A. F. England, H. S. Hewson, H. Richardson, E. Hugh
Woods, P. W. Wright.

Team-Manager: Mr. D. Duncan.

Secretary: Mr. Philip Coley.

Hon. Medical Officer: Dr. E. J. Crarer, M.B., Ch.B.

Colours: Shirts—White.

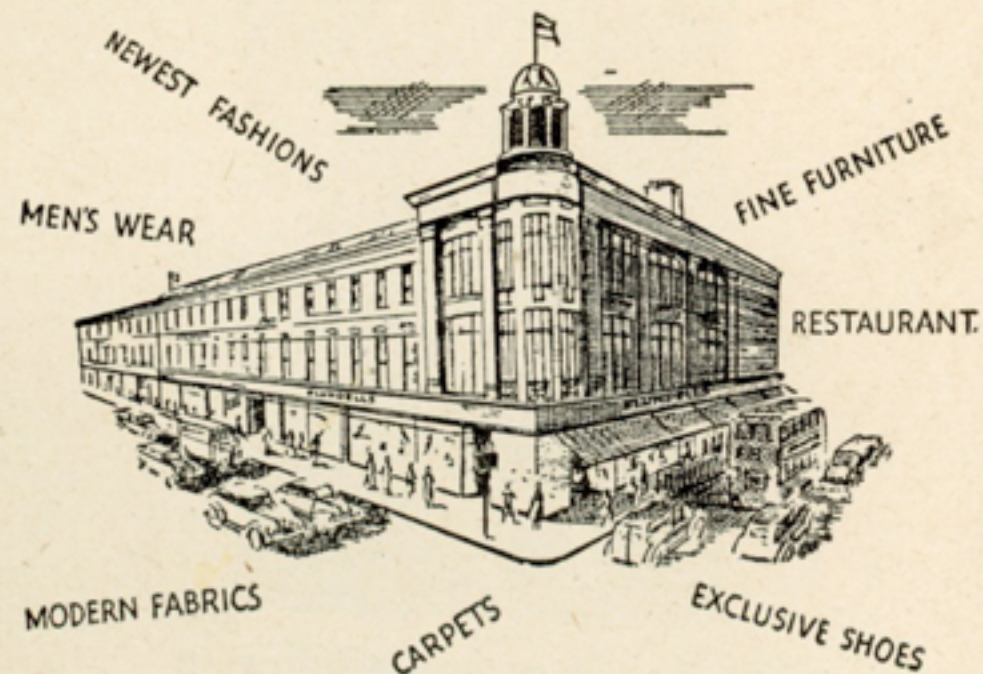
Knickers—Black

Stockings—Black and White.

Ground: Kenilworth Road (off Dunstable Road, Luton).

Registered Office: 70 and 72, Kenilworth Road, Luton.

LUTON'S LEADING STORE SINCE 1852



*there's always something new
at*

Blundell's
of Luton

BLUNDELL BROS. (Luton) LTD.,
8-16 & 30 George St; 2-16 Cheapside, LUTON,
Telephone: LUTON 1110 (3 lines)

FOREWORD

WITHOUT any doubt at all, season 1948-49 will be remembered mainly for the excitement which the F.A. Cup-ties brought to the Luton fans.

More especially was this found in the two matches with Leicester City which, in 3½ hours' football, produced 18 goals, and the City, scraping through in the rep'ay, went on to Wembley.

In the League it was a satisfactory sort of season, for the Town finished halfway up, despite a bad spell in March and April, when seven consecutive defeats were their portion.

Some of this could be put down to reaction after the Cup dismissal and some to injuries, but had an average number of points been obtained during this period, the Town would have had a much higher position.

During the close season, there have been several departures, chief of which, of course, is the transfer of Bob Brennan to Birmingham for a fee which is easily a record for Luton.

This is something of a disappointment, though it is difficult to see what the Board could have done but to accede to the player's request to join a First Division club after they had refused the first offer.

With most of last season's other stalwarts available, the Town are facing the fourth post-war season of normal football with confidence.

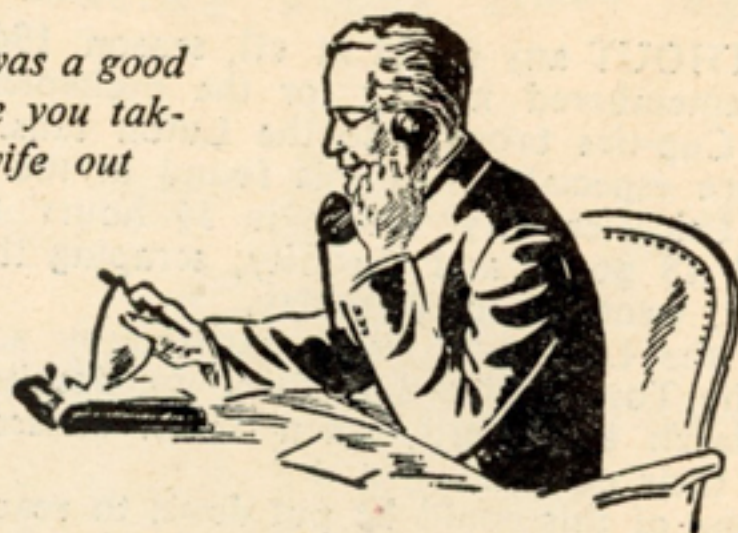
There should be little wrong with the defence, in which much will be expected from Bud Aherne, expensive capture last season from Belfast Celtic, and of the forwards, youngsters like Charlie Burtenshaw and Jack Taylor, will probably show that they have benefited from their experience last season, and will be given their chance.

Should the need for new recruits become apparent in the early days of the season, I do not think the Town will be slow to go into the transfer market.

—CHILTERN

"Yes, it was a good game—are you taking the wife out tonight?"

"Yes—see you in the usual spot."



THE ROYAL

LUTON'S POPULAR RENDEZVOUS
FOR ALL SPORTSMEN

*Where you find relaxation
and pleasant company*

FULLY LICENSED RESTAURANT

ROYAL HOTEL
MILL STREET · LUTON

Proprietor: A. W. Lester

Phone: 1189

THE CHAIRMAN'S MESSAGE

WE come to the start of another season in an optimistic frame of mind, convinced that we shall be able to hold our own once again in the highly competitive Second Division, and thinking that with a little bit of luck we shall be among the promotion contenders.

But whatever happens, we are hoping that the fare provided at Kenilworth-road will be entertaining and that the supporters will get full value for their money.

I need not enlarge on the history of last season when our team added considerably to their reputation as doughty Cup-fighters, and when we came within an ace of entering the last eight.

Some time could be spent dwelling on what might have been, but we are more concerned with the future now, and, in particular, with what will happen in the coming weeks and months.

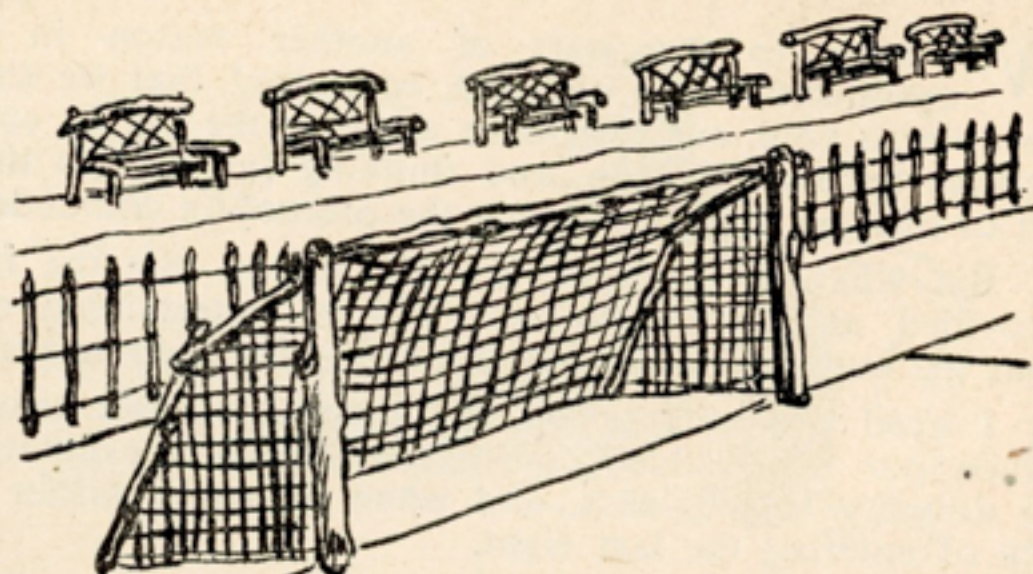
The departure of Brennan will doubtless leave a gap in the ranks. The Board did all they could in turning down Birmingham's first offer, but could scarcely disregard Brennan's subsequent application for a move to a First Division club.

Of course, the fee received puts the club on its best financial footing for years, but it is not our intention to hoard the money.

It will be spent in strengthening any position in which weaknesses reveal themselves, but there will be chances in the coming season for the youngsters on the books who were coming to the fore last season.

I am convinced that the way to success is through bringing along young players gradually, a policy which is fraught with difficulty at the moment because of the Conscription Act which means their loss to clubs for a couple of seasons.

CHARLES JEYES.



LILLYWHITE'S
OF LEAGRAVE ROAD

**DO NOT RECOMMEND THIS
FOR FOOTBALL — BUT**

**IT IS AN IDEA FOR THE
GARDEN**

Phone 2812-2813 for ALL TIMBER REQUIREMENTS

MEN WHO HAVE PLAYED FOR LUTON SINCE PROFESSIONALISM WAS ADOPTED

1891-2: J. Burley; Sanders, Hoy; Wright, Paul, Taylor, E. H. Lomax; F. K. Whitby, Deacon, C. Lomax, Ocle, H. Whitby, Chesher.

1892-3: Burley, T. Read; Sanders, Hoy, George, Wilson; Wright, Julian, Taylor, Watkins; Brown, Chesher, Allen, H. and F. Whitby, Barbour, Galbraith, J. McKenzie, Kirk.

1893-4: Bee; Chesher, Wilson, C. Reed; Watkins, Julian, Taylor; H. Whitby, Allen Galbraith, Finlayson, Vickers, J. Dimmock, Brown, Hayes.

1894-5: Bee; Chesher, McCartney, M. D. Nicholson, McEwin, Watkins, McCrindle, Howe, Collins; Brown, Gallacher, Galbraith, Prentice, Allen, Dimmock, Jack.

1895-6: Jack, Russell, Williams; Stirton, M. D. Nicholson, McCartney, McEwin, Watkins, Stewart, Docherty; Gallacher, Finlayson, Galbraith, Parkinson, Birch, Ekins, Coupar, Dimmock.

1896-7: Williams; Davies, McCartney, McEwin; Perrins, Stewart, Docherty, Watkins; Gallacher, Finlayson, McInnes, Galbraith, Birch, Coupar, Ekins, Dimmock, Brown.

1897-8: Williams; McCartney, McEwin; Davies, Stewart, Docherty, Perrins; Gallacher, Coupar, Birch, Clarke, Donaldson, Little, McInnes, Ekins, Durrant.

1898-9: Perkins; H. Williams, Moore, Dow; C. Ford, Clark, Sharp, Crump; Durrant, Hewitt, W. Ford, Kemplay, Draper, McInnes, Brock, Ekins.

1899-1900: Daw; Dow, McCurdy; Morrison, Stewart, Brown, Williams, Rally; Inglis, Brock, Fairgrieve, Draper, McInnes, Eckford.

1900-1: Monks; Ord, Lindsay, McCurdy; Clifford, Holdstock, Williams, Cox; Brown, Blessington, Molyneux, Burbage, Dempsey, Tierney, Saxton, Durrant.

1901-2: Ord; Lindsay, Sharp, Street, F. Hawkes, White, Williams, R. Hawkes; Durrant, Blessington, Brown, Barker, Tierney, Colvin.

1902-3: Frail; Lindsay, Sharp, Hood; F. Hawkes, White, Williams, R. Hawkes; Durrant, Blessington, Hilsdon, Moody, Davidson, Gall, Allsopp.

1903-4: Thompson; Bennett, McEwin; F. Hawkes, White, Williams, R. Hawkes; Durrant, Eaton, McKee, Storey, Moody, Allsopp, Griffiths, Madden.

1904-5: Lindsay; Turner, McEwin, J. Dow; F. Hawkes, White, R. Hawkes, Pritchard, Williams; Eaton, Ross, Lambertson, Penman, Moody, Wallace, Barnes.

1905-6: Platt, H. Farr; Blackett, McCurdy, J. Dow, Else, Watkins; F. Hawkes, White, R. Hawkes, Gallacher; Warner, Macdonald, Brown, E. Dobson, Pickering, Barnes, Latheron.

1906-7: Platt, H. Farr; Hogg, Jackson, McCurdy; F. Hawkes, White, R. Hawkes, Jones; Gallacher, Warner, Schofield, Macdonald, Brown, Murphy, E. Dobson, Gittins, Pickering, Barnes, Fitzpatrick, Latheron.

1907-8: Platt, Jarvis, H. Farr; Hogg, Nicholson, Dimmock, McCurdy; F. Hawkes, Jones, White, R. Hawkes; Rankin, Walders, Rigate, Hall, Brown, Pearson, Farrant, Moody, Latheron.

1908-9: Platt, Jarvis; Dimmock, McCurdy, Gregory, Chapman; F. Hawkes, Jones, R. M. Hawkes, White; Brown, Rigate, Haycock, Menzies, Bradley, Stansfield, Moody, Johnson.

1909-10: Jarvis, Fry; Hedley, McCurdy, Chapman, Royner, Ruffett, Potts; F. Hawkes, Jones, R. M. Hawkes, Slennett, Trueman; Brown, Quinn, Smith, Moody, Stansfield, Johnson, Divine, Moore, Porter, Schofield.

1910-11: Naisby, Jarvis; Wightman, Chapman, Potts, Webb, J. Ashton, C. Watson; F. Hawkes, Bushell, R. M. Hawkes, Johnson, Brown, Quinn, Walker, Smith, Stephenson, Moody, Lashbrooke, Streeton.

1911-12: Naisby; Wightman, Potts, Ashton, A. Brown; F. Hawkes, Bushell, R. M. Hawkes, Brown, Walker, Stephenson, Moody, Stansfield, Johnson, Shepherd, Walden, Lashbrooke, Streeton.

1912-13: J. W. Day, R. Abbott, H. Bateman; C. G. Henderson, E. J. Potts, J. Jarvie; F. Hawkes, S. Thompson, T. T. Wilson, R. M. Hawkes; J. Stephenson, A. H. Wileman, W. Smith, J. Murphy, B. Holland, T. Streeton, A. Worth.

1913-14: J. T. Mitchell, R. Abbott; J. R. Elvey, J. Robinson, J. Jarvie; F. Hawkes, R. W. Frith, R. M. Hawkes, T. T. Wilson, M. Donaghy, E. Stevens, A. F. Durrant, A. H. Wileman, E. Simms, R. Brewis, F. Rollinson, J. Wilkie, S. Hoar.

1914-15: J. T. Mitchell, R. Abbott; J. R. Elvey, J. Dunn, J. Robinson, E. J. Potts; F. Hawkes, R. W. Frith, R. M. Hawkes, T. T. Wilson, E. G. Needham, J. Brandham; H. P. Roberts, R. N. Macfarlane, A. H. Wileman, A. Roe, E. Simms, W. Heath, F. Rollinson, J. Chipperfield, F. Lindley, S. Hoar.

(WAR INTERVAL)

1919-20: P. Summers, R. Abbott, H. Whitehead, J. R. Elvey, J. Dunn, F. Hawkes, F. Hull; R. M. Hawkes, T. Urwin, J. Rutherford, T. Parker, J. Brandham, G. Bowler, P. Stewart; S. Hoar, W. J. Grimes, A. Roe, R. Tomlinson, D. Williams, E. Simms, L. Bookman, G. Dodd, F. J. Hensman, E. J. Seymour, H. Higginbotham, F. W. P. Hill.

1920-21: H. Bailey, J. M. Watson, R. Abbott; G. Lennon, A. Tirrell, J. Semple, F. Hull, A. Reynolds, F. J. Hensman; A. Roe, T. Parker, W. Molyneux, J. W. Lamb, H. L. Cockerill, L. R. Bayliss, W. Walsh, P. Stewart; S. Hoar, H. Higginbotham, G. Butcher, F. W. P. Hill, E. Simms, A. Mathieson, L. Bookman, H. Sidney, J. Shankland, J. McKechnie, J. Bradley.

1921-22: H. Bailey, T. Gibbon; A. Tirrell, G. Lennon, R. C. Graham, F. Hull, J. Stephenson; J. H. Foster, A. Roe, J. R. Walker, W. Molyneux, T. Parker, W. Walsh, R. Millar; E. J. Bassett, S. Hoar, H. Higginbotham, S. Reid, E. Simms, A. Mathieson, G. Butcher, L. Bookman, H. Sidney, J. Hall, H. S. Jephson.

1922-23: T. Gibbon, H. Bailey, S. Bird; G. Lennon, A. Tirrell, J. Stephenson, R. Graham; W. Jennings, A. Roe, J. Walker, W. Molyneux, J. H. Foster, R. Millar, A. Brown, T. Parker; S. Hoar, G. Butcher, S. Reid, W. Clarkson, H. Higginbotham, R. Thompson, R. Hoten, T. Irvine, R. Reader, T. Cottingham, W. Henderson, C. Bonsall, J. Grubb.

1923-24: T. Gibbon, J. Orr, W. Shepherd; R. Anderson, R. C. Graham, J. Pearson, A. Tirrell, J. Till; J. H. Foster, W. Jennings, R. Millar, W. Molyneux, A. Roe, J. R. Walker; S. Hoar, W. Henderson, G. Butcher, J. Green, A. Kerr, S. Reid, R. V. Hoten, C. Bonsall, C. Danskin.

1924-25: G. H. Brookes, J. Orr; A. Anderson, R. C. Graham, J. Johnson, J. Till; T. Davies, W. Jennings, R. Millar, J. Mills, A. Roe, J. R. Butcher, E. S. Cockle, W. Keen, J. Shankley, A. Kerr, S. Reid, R. W. Tricker (amateur), R. V. Hoten, A. Brown, G. T. Dennis.

1925-26: H. Mingay, H. Purdy, R. Anderson, R. Graham, J. Till, S. Bedford, G. Richards, W. Jennings, J. R. Walker, R. Millar, S. Neal, A. Rennie, H. Roe, J. Miller, H. Moffat, N. Thomson, J. Shankley, S. Reid, J. Thompson, S. Littlewood, T. Love, W. Agnew, H. Rogers, G. Dennis, F. Robinson.

1926-27: W. Harper, W. E. Kaine, H. Mingay; R. C. Graham, J. Harkness, R. Kingham, R. M. Moir, D. Richards, J. Till, C. Wolstenholme; J. R. Black, C. R. Fraser, J. Fulton, J. Gordon, R. Millar, A. Rennie; W. Agnew, J. Clark, G. Dennis, R. Gillespie, H. Keeling, A. S. Nunn, F. Panther, J. Pointon, S. Reid, N. Thomson, J. T. Thompson, E. Turner, H. Woods, J. Yardley.

1927-28: H. Abbott; J. Muir, P. Spence; R. C. Graham, J. Harkins, R. Kingham, D. Richards, J. Till; J. R. Black, C. R. Fraser, J. Fulton, J. Gordon, J. Lumsden, R. Millar, J. Ramage, J. Reynolds; J. Banks, A. S. Davies, G. T. Dennis, R. G. Galloway, A. S. Nunn, F. G. Panther, J. Pointon, J. Reid, S. Reid, A. Rennie, J. Sutton, H. Woods, J. Yardley.

1928-29: H. Abbott, C. S. Banes, P. Spence; W. Curwen, R. Kingham, R. Graham, B. Harris, R. Haggerty, D. Richards; J. B. Black, J. Bodsworth, A. Clark, J. Donnelly, A. Forbes, C. R. Fraser, J. Fulton, R. Lumsden, R. Miller, J. Reynolds; L. Bedford; W. Birch, R. Boylen, A. Craigie, J. Daly, G. T. Dennis, A. Hutchin, A. S. Nunn, A. Rennie, T. Roe, J. Scott, W. Sheldon, W. Vaughan, A. V. Walters, W. Winnell, H. Woods, J. Yardley.

1929-30: C. S. Banes, G. B. Harford; F. G. Barber, W. Curwen, R. Kingham, D. Richards, E. Smith, R. Walker; J. R. Black, A. Clark, C. R. Fraser, J. Fulton, E. W. H. Gale, R. Millar, F. G. Morgan, A. Smeaton; L. Bedford, W. Birch, R. Boylen, W. Brown, J. Daly, J. Drinnan, A. Harwood, A. Hutchinson, W. McInnes, A. Rennie, W. J. Rickett, W. Sheldon, W. Winnell, H. Woods, J. Yardley.

1930-31: C. S. Banes, G. B. Harford; T. Hodgson, R. Kingham; W. Knox, D. Richards, E. Smith; A. Clark, C. R. Fraser, E. W. H. Gale, A. Hale, H. M'Ginnigle, J. B. Muir, J. E. Page, J. Richmond; J. Armstrong, W. Brown, R. S. Bryce, F. Dent, A. Heslop, G. M'Nestry, A. Rennie, W. Rickett, J. Slicer, P. Smart, J. Yardley.

1931-32: G. B. Harford, J. Imrie; T. Hodgson, R. Kingham, W. Knox, G. C. Wilson; W. Brown, R. S. Bryce,

C. R. Fraser, E. W. Gale, A. Hale, V. Jones, F. W. Kean, H. M'Ginnigle, W. Miller; A. S. Black, W. Cupit, J. Chapman, A. Heslop, H. Loasby, G. M'Nestry, A. Rennie, D. Rowe, J. Slicer, T. Tait, G. Turner, A. Wales, J. Yardley.

1932-33: G. B. Harford, J. Imrie; S. A. Coote, T. Hodgson, A. Ives, R. Kingham, T. S. Mackey; W. Brown, B. Diaper, C. R. Fraser, A. Hayhurst, F. W. Kean, H. M'Ginnigle; T. Alderson, W. Corkindale, W. C. Hutchison, A. Mills, A. Nelson, A. Rennie, J. Roberts, D. Rowe, T. Tait, R. S. Weaver, R. Whalley.

1933-34: G. B. Harford, J. L. Mittell; S. A. Coote, J. S. Gibson, R. Kingham, T. S. Mackey, H. Reece; W. Beck, W. Brown, C. R. Fraser, F. W. Kean, H. Lawson, H. M'Ginnigle, J. Rennie, W. Seddon; S. Anderson, S. Bell, T. Bell, L. Hargreaves, F. Holbeach, D. Hutchison, D. Kirkwood, G. S. Martin, G. Pearson, A. Rennie, T. Tait.

1934-35: J. L. Coen, G. B. Harford, C. J. Preedy, S. A. Coote, R. Kingham, T. S. Mackey, H. J. Preece, T. S. Smith; W. Beck, W. Brown, D. Colquhoun, C. R. Fraser, F. W. Kean, G. I. Kidd, H. M'Ginnigle, J. Payne, W. Thayne; J. Ball, S. Bell, T. Bell, C. Cook, W. Crompton, W. Haggart, H. Hackett, W. Harrison, D. Hutchison, G. S. Martin, L. Murphy, W. Pease, A. Rennie, F. Roberts, J. R. Russell, G. Stephenson, J. T. Taylor.

1935-36: J. L. Coen, H. Dolman, H. M'Intosh; H. Booton, S. C. Coote, A. Hubbard, R. Kingham, T. S. Mackey, T. S. Smith; D. Colquhoun, W. J. Fellowes, C. R. Fraser, W. P. B. Godfrey, H. Gooney, G. I. Kidd, H. M'Ginnigle, J. Nelson, W. Thayne; H. Andrews, J. Ball, F. E. Beresford, W. G. Boyd, C. Cook, W. Crompton, M. S. Crook, J. Hodge, G. S. Martin, J. Payne, L. Rich, F. Roberts, F. Sloan, G. Stephenson, R. Stevens, J. T. Taylor, G. Turner.

1936-37: J. L. Coen, H. W. Dolman; H. Booton, A. Hubbard, T. P. King, R. Kingham, B. R. Lutterloch, T. S. Mackey, T. S. Smith; C. Childs, W. J. Fellowes, J. Finlayson, W. P. B. Godfrey, W. H. Gooney, L. Hall, G. I. Kidd, H. M'Ginnigle, J. H. Nelson; J. T. Ball, F. E. Beresford, G. Cox, W. Crompton, E. Hancock, J. Hodge, F. Hogg, F. J. Hosier, G. S. Martin, H. Mills, J. C. Patrick, J. Payne, J. E. Harris, L. T. Rich, F. Roberts, F. Sloan, G. Stephenson, R. F. Stevens.

1937-38: J. L. Coen, H. W. Dolman, S. Mayberry; R. Carte, T. P. King, B. R. Lutterloch, T. S. Mackey, T. S. Smith; C. Childs, G. Dreyer, W. J. Fellowes, J. Finlayson, L. Hall, G. I. Kidd, J. Lewis, J. Loughran, N. V. McKay, J. Nelson, J. Strathie; E. Connelly, G. Cox, A. G. Dawes, C. Ferguson, H. E. Gager, E. O. Griffiths, E. Hancock, F. Hogg, J. E. Parris, J. Payne, W. J. Redfern, L. T. Rich, F. Roberts, G. H. Stephenson, R. F. Stevens, E. J. Vinall.

1938-39: J. L. Coen, H. W. Dolman, S. Mayberry; T. Dunsmore, T. P. King, B. R. Lutterloch, T. S. Smith, R. Carte; J. Finlayson, J. Loughran, J. Nelson, G. Dreyer, J. Wale, G. Goodyear, J. Strathie, F. Roberts, D. Gardiner, J. Lewis, G. I. Kidd, R. Campbell; J. Carroll, W. J. Redfern, E. Connelly, H. J. Billington, E. J. Vinall, W. W. Burgess, H. E. Gager, F. Laing, C. Clark, C. Ferguson, G. H. Stephenson, R. F. Stevens, F. Hogg.

1939-40 (ONLY THREE LEAGUE MATCHES PLAYED): J. L. Coen, S. Mayberry, G. E. Duke; T. Dunsmore, B. R. Lutterloch, C. J. Ladd, H. H. Fletcher; J. Finlayson, G. Goodyear, R. Campbell, G. Dreyer, P. J. Burke, E. Hindmarsh, F. Roberts, D. Gardiner, J. Carroll, C. Clark, W. W. Burgess, H. E. Gager, F. Laing, A. F. Scott, H. J. Billington, E. J. Vinall, C. Fullarton, E. J. Duggan, J. Gillespie, G. H. Stephenson, F. Hogg, R. Stockill.

WAR INTERVAL.

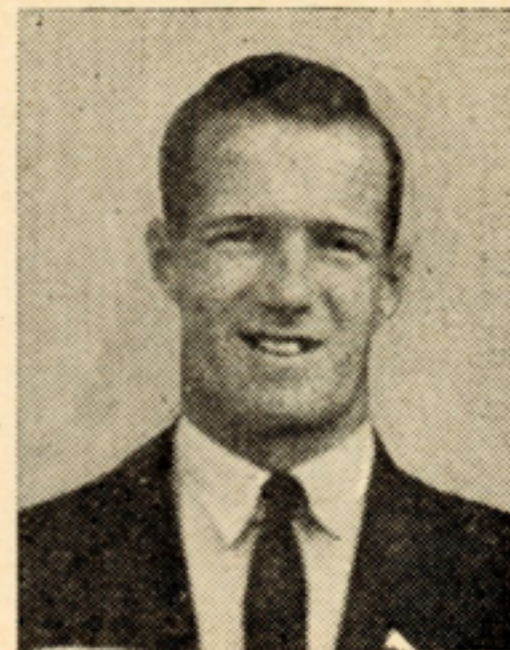
1946-47: N. L. Bywater, B. R. Streten, G. E. Duke, M. Morrison, J. Palmer; W. Cooke, D. Beach, L. Lake, J. Sanderson; F. Soo, H. E. Gager, D. Gardiner, G. Brice, G. Goodyear, S. Kettley, R. Morton, J. Thompson, C. Garner, L. Hall; W. L. Waugh, A. Steen, A. Driver, H. J. Billington, E. J. Duggan, W. Bates, W. Wallbanks, M. Daniel, E. Connelly, W. Shanks, R. Hacking, D. Duncan, H. Lee, S. High, A. F. Scott, J. Ball.

1947-48: B. R. Streten, N. L. Bywater, G. E. Duke; W. Cooke, W. M. Hughes, L. Lake, J. Wilson, J. Sanderson, J. Pemberton; F. Soo, S. Owen, D. Gardiner, H. E. Gager, L. Hall, R. Ruffett, R. Morton, N. Day, W. Collins, S. Kettley; W. L. Waugh, R. Brennan, E. J. Duggan, H. J. Billington, M. Daniel, S. Ottewell, E. Connelly, A. Driver, W. Shanks, P. Small, W. Wallbanks, S. Nelson, M. Walker, S. High, C. Burtenshaw, D. Duncan, J. O'Brien, L. York.

Continued on page 19

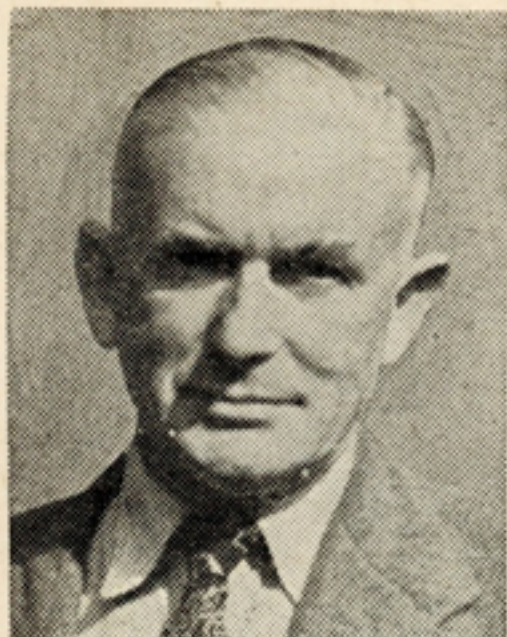
DALLY DUNCAN (Team Manager)

Famous former Scottish International, Hull City and Derby County star, who is beginning his third season as the Town's manager. He first came to Luton in 1946 as player-coach, and when George Martin went to Newcastle during the summer of 1947, he was appointed player-manager. Decided to hang up his boots at the end of the 1947-48 season, and was then made team manager. However, he still turns out in practice games, and made an appearance with the Colts last season when he scored a spectacular goal. Is one of the best known men in football, and finds his host of friends in the game a valuable asset.



PHILIP COLEY (Secretary)

His is not the easiest of jobs, for a football club secretary is faced with much worry, especially when the Cup-ties come along. Has now had three years in the job and is completely efficient in a quiet way. Before his appointment, his association with football was confined to secretarial experience with a local club, but he has had a life-long interest in the game, and the work came easily to him. Like many others on the Town's staff, he was born in the north-east but has been in Luton for a good many years.



HUBERT DAY
(Chief Scout)

Has more than earned his pay since he was appointed a full-time official of the club, for he was responsible for signing Bob Brennan whose transfer to Birmingham meant a profit of £18,000 for the Town. Had charge of the Colts' team in their early days in the South Midlands League and guided them to their championship win a couple of years ago. Has brought several promising youngsters to the club, and is hoping to build up the resources even more in this, his third season in the job. Was a well-known amateur footballer in his younger days.

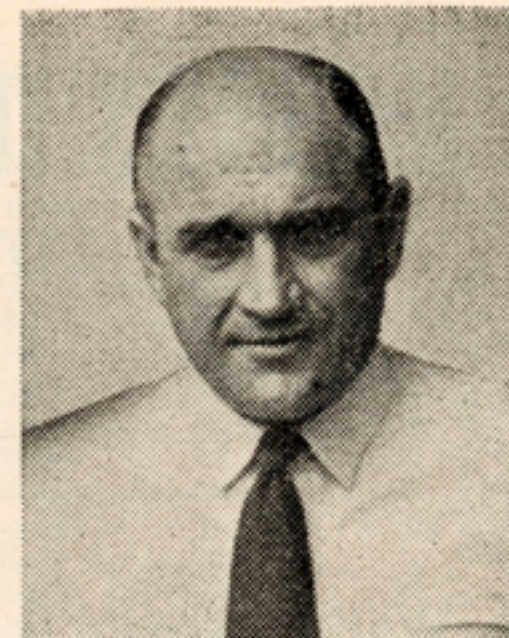
RALPH HANN
(Trainer)

Brings to his job of trainer the same enthusiastic spirit which marked his career as a player when he was a tremendously hard-working wing-half who had 14 seasons with Derby County. Hails from Whitburn, the home of such famous football personalities as Jimmy and Angus Seed and Sep Smith and his brothers, and after playing with the local club, signed amateur forms for Sunderland. Few opportunities occurred for him there, so he accepted an offer to sign professional forms for Newcastle United. After a couple of seasons with them, he was transferred to Derby, and for a long spell, played left-half behind Dally Duncan. Came to Luton two years ago, after a season as trainer to Crystal Palace.



TOM MACKEY
(Trainer)

First came to Luton as a player in 1932 when he was transferred from Sheffield Wednesday. Was bought as a centre-half, but was converted successfully into a full-back and was a member of the promotion side. Always seemed to be at his best in Cup ties in which he played a heroic part more than once. Began his football with Ferryhill Athletic in his native Co. Durham and joined the paid ranks with Hartlepool United whom he left 2½ seasons later to join Sheffield Wednesday. Finished his playing career in 1938, and was appointed to the training staff, where he has given great service.



JOHN SANDERSON
(Groundsman)

An unlucky injury which ultimately caused him to lay aside his boots during the season before last, deprived the Town of a splendid player. A full-back who was signed from Wolves for the first season after the war, he looked like being the answer to all the worries about that department at that time, until the mishap occurred. He showed amazing pluck in playing under severe handicap, but despite an operation, he had to give up the game. The club thought so highly of him that they made him groundsman, and he has now learnt all there is to know about tending the turf.



McILROY'S TRAVEL BUREAU

LUTON

39 Waller St.

phone : 3680

88 Castle St.

phone : 4545

World wide Travel arrangements

AIR — SEA — RAIL

London Theatre Ticket Agents

Receiving Office for

WESTERN UNION CABLE SERVICE

to CANADA and AMERICA

Air, Sea and Rail - No Booking Fees

LUTON RESULTS IN F.A. CUP

1924-25	Jan. 10—1st	Round:	West BromwichA	0—4
1925-26	Nov. 28—1st	Round:	FolkestoneH	3—0
	Dec. 12—2nd	Round:	AberdareA	0—1
1926-27	Nov. 27—1st	Round:	London Caledonians	...H	4—2
	Dec. 11—2nd	Round:	NorthfleetH	6—2
	Jan. 8—3rd	Round:	ChelseaA	0—4
1927-28	Nov. 26—1st	Round:	ClaptonH	2—2
	Nov. 30—1st	Round:	Clapton*N	4—2
	Dec. 10—2nd	Round:	NorwichH	6—0
	Jan. 14—3rd	Round:	BoltonA	1—2
1928-29	Nov. 24—1st	Round:	SouthendH	5—1
	Dec. 8—2nd	Round:	FulhamA	0—0
	Dec. 13—2nd	Round:	Fulham*H	4—1
	Jan. 12—3rd	Round:	Crystal PalaceH	0—0
	Jan. 16—3rd	Round:	Crystal Palace*A	0—7
1929-30	Nov. 30—1st	Round:	Queen's Park RangersH	2—3
1930-31	Nov. 29—1st	Round:	Clapton OrientH	2—2
	Dec. 4—1st	Round:	Clapton Orient*A	4—2
	Dec. 13—2nd	Round:	WatfordA	1—3
1931-32	Nov. 28—1st	Round:	SwindonA	5—0
	Dec. 12—2nd	Round:	LincolnA	2—2
	Dec. 16—2nd	Round:	Lincoln*H	4—1
	Jan. 9—3rd	Round:	WolvesH	1—2
1932-33	Nov. 26—1st	Round:	KingstoniansH	2—2
	Nov. 30—1st	Round:	Kingstonians*A	3—2
	Dec. 10—2nd	Round:	Stockport CountyA	3—2
	Jan. 14—3rd	Round:	BarnsleyA	0—0
	Jan. 18—3rd	Round:	Barnsley*H	2—0
	Jan. 28—4th	Round:	Tottenham HotspurH	2—0
	Feb. 18—5th	Round:	Halifax TownA	2—0
1933-34	Mar. 4—6th	Round:	EvertonA	0—6
	Jan. 12—3rd	Round:	ArsenalH	0—0
1934-35	Jan. 12—3rd	Round:	ChelseaA	0—0
	Jan. 16—3rd	Round:	Chelsea*H	2—0
	Jan. 26—4th	Round:	BurnleyA	1—3
1935-36	Jan. 11—3rd	Round:	West HamA	2—2
	Jan. 15—3rd	Round:	West Ham*H	4—0
	Jan. 25—4th	Round:	Manchester CityA	1—2
1936-37	Jan. 16—3rd	Round:	BlackpoolH	3—3
	Jan. 20—3rd	Round:	Blackpool*A	2—1
	Jan. 30—4th	Round:	SunderlandH	2—2
	Feb. 3—4th	Round:	Sunderland*A	1—3

Continued on page 19

How

YOU WILL BENEFIT BY ALLOWING
US TO HANDLE YOUR COMMISSIONS

- ★ No Limit to the amount you can win on any one day's Total Investments.
- ★ No Limit for Win Doubles, Trebles and Accumulators.
- ★ No Limit for all Greyhound Forecasts.
- ★ We pay 1-2, 6 or 7 runner 1/3rd the odds a place. 8 or more runners 1/4th the odds a place.
- ★ Speedy and Efficient Service personally supervised.
- ★ No commissions refused, large or small.
- ★ Competitive Ante-post quotations on all Main Sporting Events.
- ★ Our office is open each evening until after the last race at all Principal London Greyhound Tracks.

Telephone: Luton 5100 all lines

SWAIN BROS. OF LUTON

LUTON RESULTS IN F.A. CUP—Continued

1937-38	Jan. 8—3rd	Round:	Scarborough	A	1—1
	Jan. 12—3rd	Round:	Scarborough*	H	5—1
	Jan. 22—4th	Round:	Swindon Town	H	2—1
	Feb. 12—5th	Round:	Manchester City	H	1—3
1938-39	Jan. 7—3rd	Round:	Liverpool	A	0—3
1945-46	Jan. 5—3rd	Round:	Derby County	H	0—6
	Jan. 9—3rd	Round:	Derby County	A	0—3
1946-47	Jan. 11—3rd	Round:	Notts County	H	6—0
	Jan. 25—4th	Round:	Swansea Town	H	2—0
	Feb. 8—5th	Round:	Burnley	H	0—0
	Feb. 11—5th	Round:	Burnley*	A	0—3
1947-48	Jan. 10—3rd	Round:	Plymouth	A	4—2
	Jan. 24—4th	Round:	Coventry	H	3—2
	Feb. 7—5th	Round:	Queen's Park Rangers	A	1—3
1948-49	Jan. 8—3rd	Round:	West Ham	H	3—1
	Jan. 29—4th	Round:	Walsall	H	4—0
	Feb. 12—5th	Round:	Leicester City	H	5—5
	Feb. 19—5th	Round:	Leicester City*	A	3—5

* Replay. N at Highbury.

LUTON TOWN F.C. GOAL SCORERS

The League: Division II.—J. W. Arnison, 17; R. Brennan, 11; T. Kiernan, 5; E. J. Duggan, 4; P. Small, 4; W. L. Waugh, 2; S. Owen, 2; J. Mulvaney, 2; S. Nelson, C. Watkins, J. Wilson, C. Burtenshaw, J. Taylor, M. Daniel, R. Morton and an opponent, 1 each.

F.A. Cup.—R. Brennan, 6; C. Watkins, 3; T. Kiernan, 3; J. W. Arnison, 2; P. Small, 1.

Football Combination.—W. Burtenshaw, 17; J. O'Brien, 13; W. Shanks, 8; C. Burtenshaw, 7; S. Nelson, 5; M. Daniel, 5; P. Small, 4; R. Ruffett, 4; W. Collins, 4; R. Brennan, 2; J. Mulvaney, 2; R. Morton, S. Owen, E. J. Duggan, D. Lindsay, 1 each.

Football Combination Cup.—W. Shanks, 6; M. Daniel, 4; J. W. Arnison, 4; W. Burtenshaw, 3; J. Pemberton, 2; J. O'Brien, E. Duggan, D. Gardiner, J. Taylor, H. Clark, 1.

MEN WHO HAVE PLAYED FOR LUTON—Continued

1948-49: B. R. Streten, G. E. Duke, I. Hughes; W. Cooke, J. Wilson, T. Aherne, L. Lake, D. Lindsay, J. Mulvaney; D. Gardiner, L. Hall, S. Owen, W. Gipton, W. Collins, R. Morton, C. Watkins, R. Ruffett, N. Day, J. Pemberton; P. Small, S. Nelson, W. Shanks, C. Burtenshaw, R. Brennan, J. W. Arnison, W. Burtenshaw, T. Kiernan, M. Daniel, E. J. Duggan, W. L. Waugh, J. Taylor, J. O'Brien, L. Lawton, N. Ronson, L. Slatter, A. Stevenson.

G. E. COSTIN

*Coach Proprietor and
Haulage Contractor*

**67 WEST STREET
DUNSTABLE**

TEL. 30

LUXURIOUS COACHES FOR PRIVATE PARTIES

FOOTBALL TEAMS
AND SUPPORTERS
SCHOOL OUTINGS
SEASIDE RESORTS
PLACES OF INTEREST

See bills announcing trips

ENQUIRIES INVITED - - ESTIMATES FREE

F.A. CUP WINNERS SINCE 1900

- 1899-1900—Bury beat Southampton (4—0)
1900-01—Tottenham Hotspur beat Sheffield United (3—1 after draw 2—2)
1901-02—Sheffield United beat Southampton (2—1, after a draw 1—1)
1902-03—Bury beat Derby County (6—0)
1903-04—Manchester City beat Bolton Wanderers (1—0)
1904-05—Aston Villa beat Newcastle United (2—0)
1905-06—Everton beat Newcastle United (1—0)
1906-07—Sheffield Wednesday beat Everton (2—1)
1907-08—Wolverhampton Wanderers beat Newcastle United (3—1)
1908-09—Manchester United beat Bristol City (1—0)
1909-10—Newcastle United beat Barnsley (2—0, after a draw 1—1)
1910-11—Bradford City beat Newcastle United (1—0, after a draw 0—0)
1911-12—Barnsley beat West Bromwich Albion (1—0, after a draw 0—0)
1912-13—Aston Villa beat Sunderland (1—0)
1913-14—Burnley beat Liverpool (1—0)
1914-15—Sheffield United beat Chelsea (3—0)
1915-16, 1916-17, 1917-18, 1918-19—No competition
1919-20—Aston Villa beat Huddersfield Town (1—0)
1920-21—Tottenham Hotspur beat Wolverhampton Wanderers (1—0)
1921-22—Huddersfield Town beat Preston North End (1—0)
1922-23—Bolton Wanderers beat West Ham (2—0)
1923-24—Newcastle United beat Aston Villa (2—0)
1924-25—Sheffield United beat Cardiff City (1—0)
1925-26—Bolton Wanderers beat Manchester City (1—0)
1926-27—Cardiff City beat Arsenal (1—0)
1927-28—Blackburn Rovers beat Huddersfield Town (3—1)
1928-29—Bolton Wanderers beat Portsmouth (2—0)
1929-30—Arsenal beat Huddersfield Town (2—0)
1930-31—West Bromwich Albion beat Birmingham (2—1)
1931-32—Newcastle United beat Arsenal (2—1)
1932-33—Everton beat Manchester City (3—0)
1933-34—Manchester City beat Portsmouth (2—1)
1934-35—Sheffield Wednesday beat West Bromwich Albion (4—2)
1935-36—Arsenal beat Sheffield United (1—0)
1936-37—Sunderland beat Preston North End (3—1)
1937-38—Preston North End beat Huddersfield Town (1—0 after extra time)
1938-39—Portsmouth beat Wolverhampton Wanderers (4—1)
1939-40, 1940-41, 1941-42, 1942-43, 1943-44, 1944-45—No competition.
1945-46—Derby County beat Charlton Athletic (4—1 after extra time)
1946-47—Charlton Athletic beat Burnley (1—0 after extra time)
1947-48—Manchester United beat Blackpool (4—2)
1948-49—Wolves beat Leicester City (3—1)

Always go to

Buttons

for

My Clothes

LUTON 356

HARPENDEN 60

LEAGUE TABLES—Season 1948-49

Division I

	P.	W.	D.	L.	Goals		P
					F.	A.	
Portsmouth	42	25	8	9	84	42	58
Manchester U.	42	21	11	10	77	44	53
Derby C.	42	22	9	11	74	55	53
Newcastle U.	42	20	12	10	70	56	52
Arsenal	42	18	13	11	74	44	49
Wolves	42	17	12	13	79	66	46
Manchester C.	42	15	15	12	47	51	45
Sunderland	42	13	17	12	49	48	43
Charlton Ath	42	15	12	15	63	67	42
Aston Villa	42	16	10	16	60	76	42
Stoke C.	42	16	9	17	66	68	41
Live pool	42	13	14	15	53	43	40
Chelsea	42	12	14	16	69	68	38
Bo'ton W.	42	14	10	18	59	68	38
Burnley	42	12	14	16	43	50	38
Blackpool	42	11	16	15	54	67	38
Birmingham	42	11	15	16	36	38	37
Everton	42	13	11	18	41	63	37
Middlesbrough	42	11	12	19	46	57	34
Huddersfield T.	42	12	10	20	40	60	34
Preston N.E.	42	11	11	20	62	75	33
Sheffield Utd	42	11	11	20	57	78	33

Division II

Fulham	42	24	9	9	77	37	57
West Brom	42	24	8	10	69	39	56
Southampton	42	23	9	10	69	36	55
Cardiff C.	42	19	13	10	62	47	51
Tottenham H.	42	17	16	9	72	44	50
Chesterfield	42	15	17	10	51	45	47
West Ham	42	18	10	14	56	58	46
Sheffield W.	42	15	13	14	63	56	43
Barnsley	42	14	12	16	62	61	40
Luton T.	42	14	12	16	55	57	40
Grimsby T.	42	15	10	17	72	76	40
Bury	42	17	6	19	67	76	40
Q.P.R.	42	14	11	17	44	62	39
Blackburn R.	42	15	8	19	53	63	38
Leeds U.	42	12	13	17	45	63	37
Coventry C.	42	15	7	20	55	64	37
Bradford	42	13	11	18	65	78	37
Brentford	42	11	14	17	42	53	36
Leicester C.	42	10	16	16	62	79	36
Plymouth A.	42	12	12	18	49	64	36
Nottingham F.	42	14	7	21	50	54	35
Lincoln C.	42	8	12	22	53	91	28

The
DUNSTABLE MOTOR CO.
 London Road
DUNSTABLE

Tel. 849

*for
 your motoring
 requirements*

LEAGUE TABLES—Season 1948-49—Continued

Division III (South)	P.	W.	D.	L.	Goals		P.
					F.	A.	
Swansea T.	42	27	8	7	87	34	62
Reading	42	25	5	12	77	50	55
Bournemouth	42	22	8	12	69	48	52
Swindon T.	42	18	15	9	64	56	51
Bristol R.	42	19	10	13	61	51	48
Brighton	42	15	18	9	55	55	48
Ipswich T.	42	18	9	15	78	77	45
Millwall	42	17	11	14	63	64	45
Torquay Utd.	42	17	11	14	65	70	45
Norwich C.	42	16	12	14	67	49	44
Notts Co.	42	19	5	18	102	68	43
Exeter C.	49	15	10	17	63	76	40
Port Vale	42	14	11	17	63	76	40
Walsall	42	15	8	19	56	64	38
Newport C.	42	14	8	19	68	92	37
Bristol C.	42	11	14	17	44	62	36
Watford	42	10	15	17	41	54	35
Southend Utd.	42	9	16	17	41	46	34
Leyton O.	42	11	12	19	58	80	34
Northampton T.	42	12	9	21	51	62	33
Aldershot	42	11	11	20	48	59	33
Crystal Palace	42	8	11	23	38	76	27

Division III (North)							
Hull C.	42	27	11	4	93	28	65
Rotherham U.	42	28	6	8	90	46	62
Doncaster R.	42	20	10	12	53	40	50
Darlington	42	20	6	16	83	74	46
Gateshead	42	16	13	13	69	58	45
Oldham Ath.	42	18	9	15	75	67	45
Rochdale	42	18	9	15	55	53	45
Stockport C.	42	16	11	15	61	56	43
Wrexham	42	17	9	16	56	62	43
Mansfield T.	42	14	14	14	52	48	42
Tranmere R.	42	13	15	14	46	57	41
Crewe Alex.	42	16	9	17	52	74	41
Barrow	42	14	12	16	41	48	40
York C.	42	15	9	18	74	74	39
Carlisle Utd.	42	14	11	17	60	77	39
Hartlepoons Utd.	42	14	10	18	45	58	38
New Brighton	42	14	8	20	46	58	36
Chester	42	11	13	18	57	56	35
Halifax T.	42	12	11	19	45	62	35
Accrington S.	42	12	10	20	55	64	34
Southport	42	11	9	22	45	64	31
Bradford C.	42	10	9	23	48	77	29

Established over a Century

James Walker

Goldsmith & Silversmith Ltd.

48, GEORGE STREET, LUTON

Telephone: Luton 1265

Diamond Engagement Rings
Signet Rings Wedding Rings

High Grade Watches and Clocks
Fully Guaranteed

Presentation Pieces in Solid Silver
Electro Plate and Cutlery

Watch, Clock and Jewellery Repairs
of every description

Re-plating and Re-mounting

Old Gold and Silver bought
for cash or taken in exchange

Sovereigns Purchased

LEAGUE TABLES—Season 1948-49—Continued

COMBINATION CUP					Goals		
Section I	P.	W.	D.	L.	F.	A.	P.
Southampton	14	7	5	2	26	12	19
Southend Utd	14	6	5	3	21	13	17
Arsenal	14	6	5	3	25	16	17
Charlton Ath	14	6	4	4	29	17	16
Millwall	14	6	4	4	26	20	16
Portsmouth	14	4	3	7	20	25	11
Crystal Palace	14	4	3	7	9	20	11
West Ham	14	1	3	10	14	47	5
Section II							
Tottenham H.	14	10	1	3	35	13	21
Chelsea	14	9	2	3	30	15	21
Fulham	14	9	2	3	25	18	20
Reading	14	5	3	6	20	24	13
Q.P.R.	14	5	2	7	22	29	12
Brighton	14	5	1	8	30	27	11
Leyton O.	14	3	2	9	20	38	8
Brentford	14	0	6	8	12	30	6
Section III							
Leicester C.	14	8	5	1	24	7	21
Luton T.	14	8	5	1	24	13	21
Norwich C.	14	9	2	3	28	19	20
Birmingham C	14	3	5	6	14	18	11
Watford	14	5	1	8	15	25	11
Ipswich T.	14	3	4	7	20	29	10
Northampton T.	14	3	3	8	24	30	9
Coventry C.	14	3	3	8	17	25	9
Section IV							
Bournemouth	14	10	2	2	30	13	22
Swansea T.	14	8	1	5	25	21	17
Bristol R.	14	8	0	6	21	14	16
Cardiff C.	14	5	5	4	24	19	15
Swindon T.	14	6	2	6	21	23	14
Plymouth A.	14	4	4	6	24	22	12
Bristol C.	14	4	2	8	15	30	10
Aldershot	14	1	4	9	11	29	6

Semi-Finals

Tottenham Hotspur 1, Southampton 1 (after extra time).
Bournemouth and Boscombe 1, Leicester City 1 (after extra time).

Replays

Southampton 3, Tottenham Hotspur 0.
Leicester City 2, Bournemouth and Boscombe 4.

Final

Bournemouth and Bos. 5, Southampton 3 (after extra time).
(Played at Portsmouth.)

PLOWMANS LIMITED

AUTOMOBILE ENGINEERS

HITCHIN ROAD
Luton

PHONE 2226

LEAGUE TABLES—Season 1948-49—Continued

FOOTBALL COMBINATION

Section "A"

	P.	W.	D.	L.	Goals		P.
					F.	A.	
Chelsea	30	21	5	4	74	24	47
Luton Town	30	20	3	7	78	38	43
Swansea T.	30	18	5	7	72	46	41
Norwich C.	30	16	6	8	43	29	38
Birmingham C.	30	15	7	8	48	27	3
Queens Park Rangers	30	13	6	11	51	51	32
Reading	30	12	5	13	53	55	29
Brighton and Hove Albion	30	11	6	13	44	49	28
Ipswich T.	30	11	5	14	42	51	27
West Ham Utd	30	10	7	13	39	48	27
Watford	30	8	8	14	35	47	24
Plymouth Argyle	30	9	6	15	35	49	24
Leyton Orient	30	10	3	17	38	70	23
Northampton T.	30	6	10	14	28	49	22
Swindon T.	30	8	4	18	41	68	20
Brentford	30	8	2	20	28	48	18

Section "B"

Arsenal	30	20	5	5	62	31	45
Portsmouth	30	17	6	7	61	25	40
Southend Utd	30	17	5	8	48	31	39
Tottenham H.	30	16	6	8	66	34	38
Southampton	30	13	9	8	44	31	35
Millwall	30	12	9	9	41	41	33
Bristol R.	30	13	5	12	42	50	31
Charlton Ath	30	12	5	13	42	45	29
Bournemouth and Boscombe	30	13	3	14	40	46	29
Crystal Palace	30	10	8	12	38	53	28
Leicester City	30	11	5	14	40	40	27
Cardiff City	30	9	6	15	52	74	24
Coventry City	30	10	3	17	37	62	23
Aldershot	30	8	6	16	45	67	22
Fulham	30	8	5	17	46	52	21
Bristol C.	30	5	6	19	25	47	16

Championship Final

Arsenal 1, Chelsea 3 (played at Tottenham).

IF YOU WANT TO
GET AHEAD . . .



GET A HAT!

Laceys
The House that Value Built.

I4 WELLINGTON STREET I4

TOWN PLAYERS' APPEARANCES

SEASON 1948-49

The League: Division II.—R. Brennan, 42; W. L. Waugh, 38; W. Cooke, D. Gardiner, 37; B. R. Streten, L. Hall, 36; J. W. Arnison, 30; J. Wilson, C. Watkins, 27; T. Kiernan, 23; S. Owen, 20; R. Morton, 17; P. Small, 16; E. J. Duggan, 14; C. Burtenshaw, 8, D. Lindsay, 7; G. E. Duke, L. Lake, W. Shanks, W. Collins, 6; J. Mulvaney, 5; T. Aherne, J. Taylor, W. Gripton, S. Nelson, 3; M. Daniel, J. O'Brien, 2; W. Burtenshaw, R. Ruffett, 1.

F.A. Cup.—R. Brennan, W. L. Waugh, W. Cooke, D. Gardiner, B. R. Streten, L. Hall, T. Kiernan, C. Watkins, 4; J. Wilson, P. Small, R. Morton, 3; J. W. Arnison, 2; J. Mulvaney, 1.

Football Combination.—G. E. Duke, J. O'Brien, 24; C. Burtenshaw, 23; L. Lake, 22; W. Gripton, 20; R. Morton, W. Burtenshaw, 19; J. Mulvaney, 18; R. Ruffett, W. Shanks, 16; S. Nelson, P. Small, W. Collins, 15; S. Owen, 10; J. Pemberton, L. Lawton, 9; M. Daniel, J. Wilson, 8; E. J. Duggan, C. Watkins, N. Day, D. Lindsay, 6; B. R. Streten, 5; L. Hall, 4; R. Brennan, R. Fielder, J. Taylor, W. Cooke, L. Slatter, I. Hughes, A. Stevenson, 1.

Combination Cup.—G. E. Duke, L. Lake, 13; W. Gripton, 12; W. Shanks, J. O'Brien, 11; M. Daniel, W. Burtenshaw, 9; R. Ruffett, 8; J. Mulvaney, J. Wilson, C. Burtenshaw, W. Collins, 7; S. Owen, 6; J. Taylor, J. Pemberton, 5; R. Morton, J. W. Arnison, S. Nelson, 4; D. Gardiner, P. Small, W. L. Waugh, E. J. Duggan, 2, D. Parkins, L. Lawton, G. Turner, H. Clark, 1.

The Leicester Arms Hotel

Dunstable Road • Luton

Luton's Popular Restaurant

LUNCHEONS AND DINNERS SERVED
DAILY

12 to 2 p.m.

7 to 9 p.m.

PRIVATE PARTIES SPECIALLY
CATERED FOR

Ask for Specimen Menu!

J. W. GREEN'S, *Noted Ales & Stouts*

FULLY LICENSED

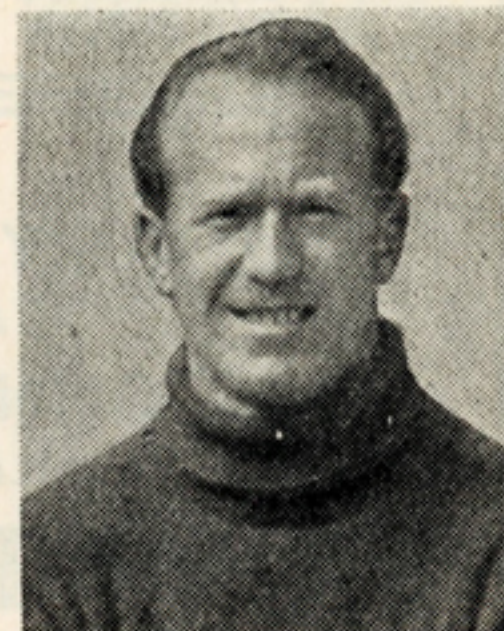
Telephone : 2718

Fred Creasey, *Proprietor*

BERNARD STRETEN

(Goalkeeper)

Set up the longest post-war run of consecutive appearances for the Town, and has missed only six first team matches in the last two seasons. First joined the Town as an amateur in the latter part of the 1946-47 season and signed professional forms early in 1948 on his demobilisation from the R.A.F. As an amateur was well among the honours, for he became automatic choice as England's goalkeeper, and also played regularly for the R.A.F. representative side. Joined the Town from Shrewsbury, and had had experience as a guest with several League clubs, including Notts County for whom he also played at centre-half and centre-forward.



IORWERTH HUGHES

(Goalkeeper)

Another amateur international, who played for Wales last season and was signed by the Town from Llandudno just after Easter. The Town first sought him just after Christmas, and had to contend with competition from First Division clubs in signing him. As yet, Hughes has had little opportunity of showing his worth, for after one outing with the Reserves, he suffered an injury which proved troublesome until the end of the season. There will be more chances for him this season and those who have seen him play regularly predict a big future for him, for he is remarkably agile and safe in handling.



EASTERN NATIONAL

LUXURY COACHES

AND

OMNIBUSES

AVAILABLE FOR

PRIVATE HIRE

Reasonable Quotations : Reliable Service

A REMINDER

Regular Express Services are operated during the Summer Months from LUTON to BOURNE-MOUTH, SOUTHSEA, MARGATE, YARMOUTH, SOUTHEND, CLACTON, and DOVERCOURT. Excursions and Tours to other South and East Coast Resorts. Half-day and Evening Circular Tours.

THE EASTERN NATIONAL OMNIBUS CO., LTD.

Local Offices:

Park Square, Castle Street,
and Williamson Street,
LUTON. (Phone 1260)

Head Offices:

New Writtle Street,
CHELMSFORD.
Phone 3431 (four lines)

EN. AD. 5549/23749

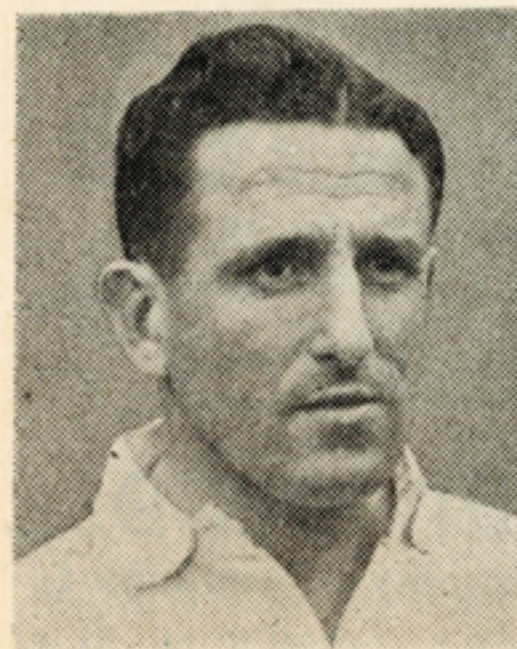
BILLY COOKE
(Full-back)

Has proved a remarkably consistent defender, and in the last three seasons has made 103 Second Division appearances, which puts him second in this respect only to Billy Waugh. Cooke, a great-hearted player, is equally at home on either flank, and his resolute tackling and refusal to be beaten stood the Town in good stead on many occasions last season. Chesterfield born, he had to come south for his first chance with a League team, for he turned professional for Bournemouth and was transferred to Luton for a modest fee after appearing successfully for them as a guest player.

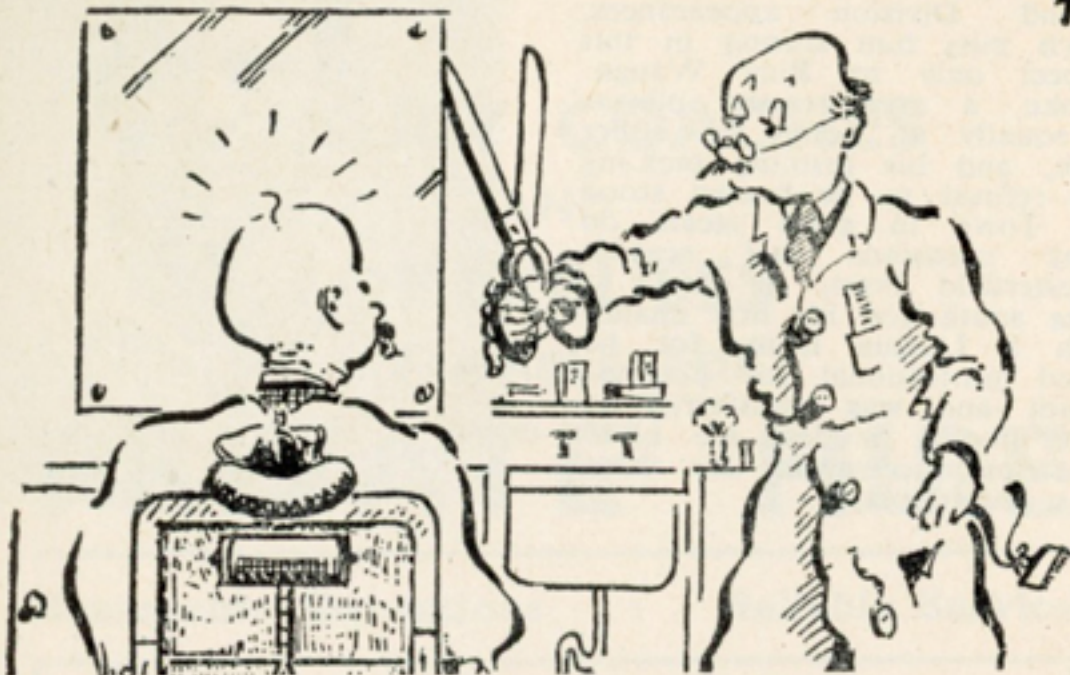


BUD AHERNE
(Full-back)

Now that Brennan has gone, Bud is the only full International remaining on the Town's books, and he played for Ireland last season. His other representative honours include appearances for Eire and the Irish League. Transferred from Belfast Celtic to Luton last March, for £8,000, he made a great debut against Tottenham Hotspur at White Hart Lane, but a couple of ankle injuries cut down the number of his appearances in the Town team to three before he left to tour the United States with Belfast Celtic. There he played brilliantly, and big things are expected of him this season.



**BUT THERE'S MORE THAN ONE "Snip"
ON ZETTERS FOOTBALL COUPON**



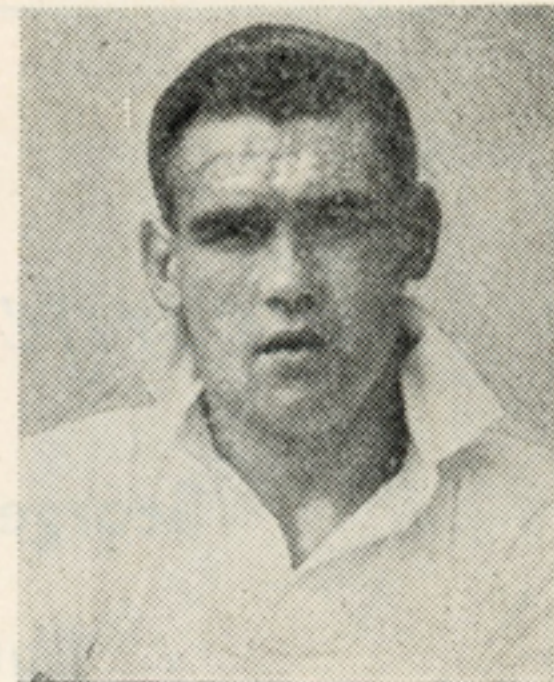
**Offering the WORLD EASIEST POOLS
OF WHICH THE MOST FAMOUS IS**

ZETTERS
1 d. POINTS POOL
12 MATCHES ONLY
4 DIVIDENDS

Send 1/- for 24 weeks' supply of coupons to
Dept. B.10, ZETTERS POOLS, LONDON, N.W.1

**JIMMY WILSON
(Full Back)**

Beginning his third season with the Town and did so well last campaign that he made 27 League appearances and played in three Cup-ties. A Scot from Musselburgh, he first attracted notice when he played for Peterborough as an amateur whilst serving in the R.A.F. When he was demobilised, Peterborough sent an official to Scotland to sign him as a professional, and after one full season with them, he was transferred to the Town. Made his League debut on Good Friday, 1948, and scored his first League goal with a long shot at Plymouth last Boxing Day.



**JIMMY MULVANEY
(Full Back)**

Another Scot, who saw service with Dumbarton before moving to Luton at a four figure fee in the summer of 1948. Had a baptism of fire in the senior team, for his first appearance was made in the Cup-tie replay at Leicester. Held his place at right-back for a time, and after another spell in the Reserves, returned to the League team at centre-forward, and marked the occasion by scoring two goals. Looked as if he might make the grade in the attack, for he is strong and forceful and cracks the ball hard. However, he shows great promise at full-back, too, and it is probably in this berth that his future lies.



George Hotel

George Street,

Luton.

Phone : Luton 654

VISIT OUR COCKTAIL BAR
WEDDING RECEPTIONS, ETC.

JIMMY PEMBERTON (Full-back or wing-half)

Alternates between full-back and wing-half, and gives a good account of himself in either position. Took a turn at inside-left in the Reserves' team last season, too, and scored a couple of great goals. Is steady and cool at full-back, and it may be here that he will be most in demand this season. Became a Luton player in November, 1947, at a time when he was attracting the interest of the scouts of several League teams. His club Stourbridge gave the Town first option on his services in recognition of the fair way in which a previous deal between the clubs was carried out.



BOB MORTON (Wing-half)

This local-born player made big strides last season when he was given his first chance in the League team and played in 17 Second Division games and three Cup-ties. Not yet 22, he has time to make further improvement, and he looks like developing into a top-grade player. If he can reproduce the form he showed in the closing matches of last season, he should gain a first team place early. Was signed as a professional in February, 1946, and before that played for Eaton Bray and Waterlow's.

B. LIDDELL



THE **100%** CYCLE

— **SPECIALIST** —

FOR

ALL YOUR CYCLING NEEDS

MAKER OF THE FAMOUS "LIDDELL SPECIAL"
HAND-BUILT LIGHT-WEIGHT RACING CYCLES &
TANDEMS. AGENT FOR THE LEADING LIGHT-
WEIGHT CYCLE MAKERS

58/60 LEAGRAVE ROAD · LUTON

CHARLIE WATKINS
(Wing-half or inside-forward)

In whichever position he appears, Charlie plays his usual sound, unassuming game, and he is a footballer in the typical Scottish tradition. Never hurried and always accurate, he proved a distinct capture at a bargain price, for the Town paid only £4,000 for him from Glasgow Rangers last season. Expresses a preference for wing-half, but cheerfully goes in at inside-forward whenever required. Had trials with Glasgow Celtic and Partick Thistle before the Rangers fixed him up as a professional, and he was at Ibrox for nearly seven seasons before he made a move to English football. Is a qualified physio-therapist and has opened a practice in the town.



SIDNEY OWEN
(Centre-half or wing-half)

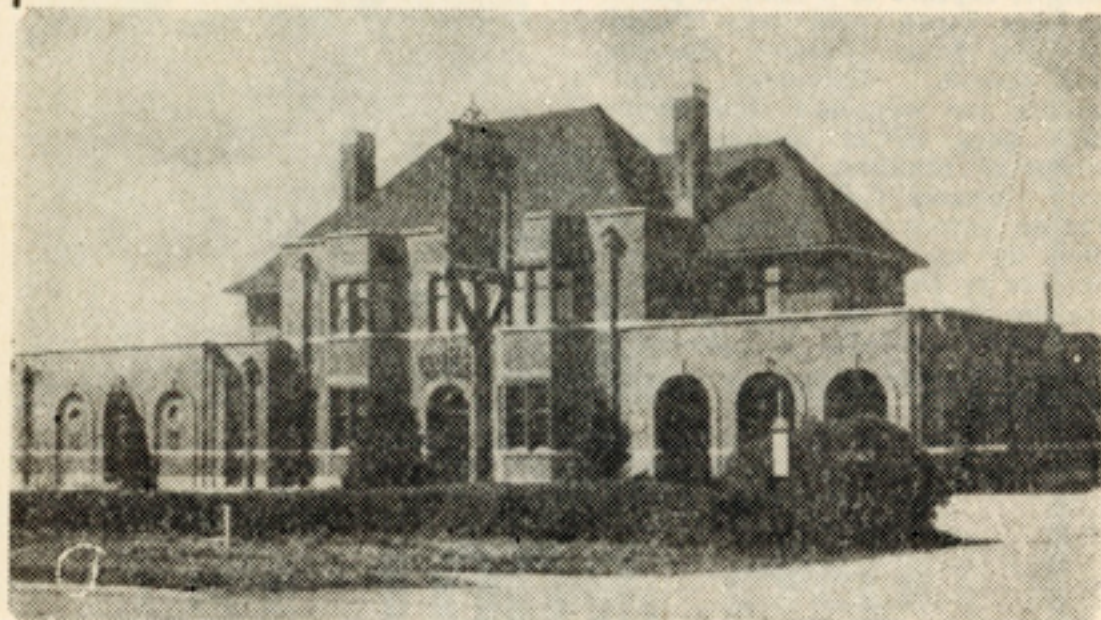
Hit the headlines with a series of brilliant displays at centre-half in the closing matches of last season, and it seems certain that he will begin this season as the team's p.vot. Is really no stranger to the position, although it was as a wing-half that he was signed from Birmingham City two years ago. He usually found himself at centre-half in his schoolboy days. At one time, was none too keen on his new-found position, but after an outing or two there, he was perfectly happy about the move. Sid has the physique for the job, and is almost unbeatable when the ball is in the air.



THE WARDEN TAVERN

PHONE: ICKNIELD 277

2½ miles out on the New Bedford Road



LUNCHEONS WEDDING RECEPTIONS

SOCIAL FUNCTIONS & EVENING PARTIES
(Winter months only)

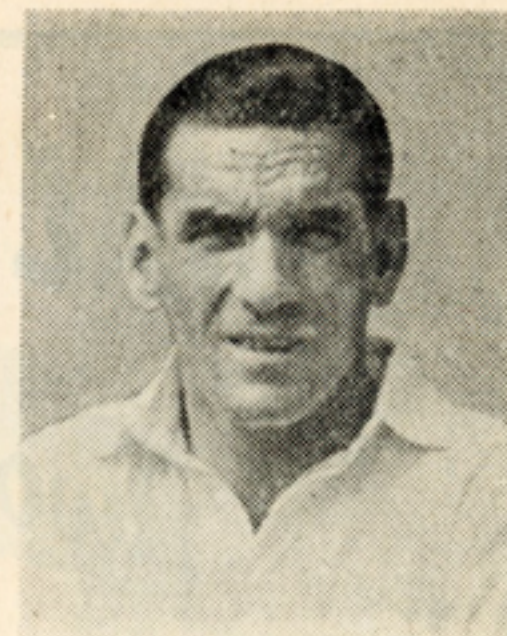
J. W. GREEN'S PRIZE ALES & STOUTS

Fully Licensed :: *Large Car Park*

PROPRIETOR: TOM HODGSON, Ex-Captain Luton Town F.C.

DOUGLAS GARDINER (Wing-half)

Now that George Duke has been transferred, Doug, is the only remaining player with pre-war associations with the club, for he was signed from Auchinleck Talbot, Scottish junior club in 1938. Not until after the war, and following over three years as a prisoner-of-war in Germany, did he secure first team recognition, but he has proved remarkably consistent since, and was captain of the team last season. A tremendous worker and a tenacious tackler who also distributes the ball to full advantage, Gardiner is one of the best servants the club has ever had.



LESLIE HALL (Centre-half)

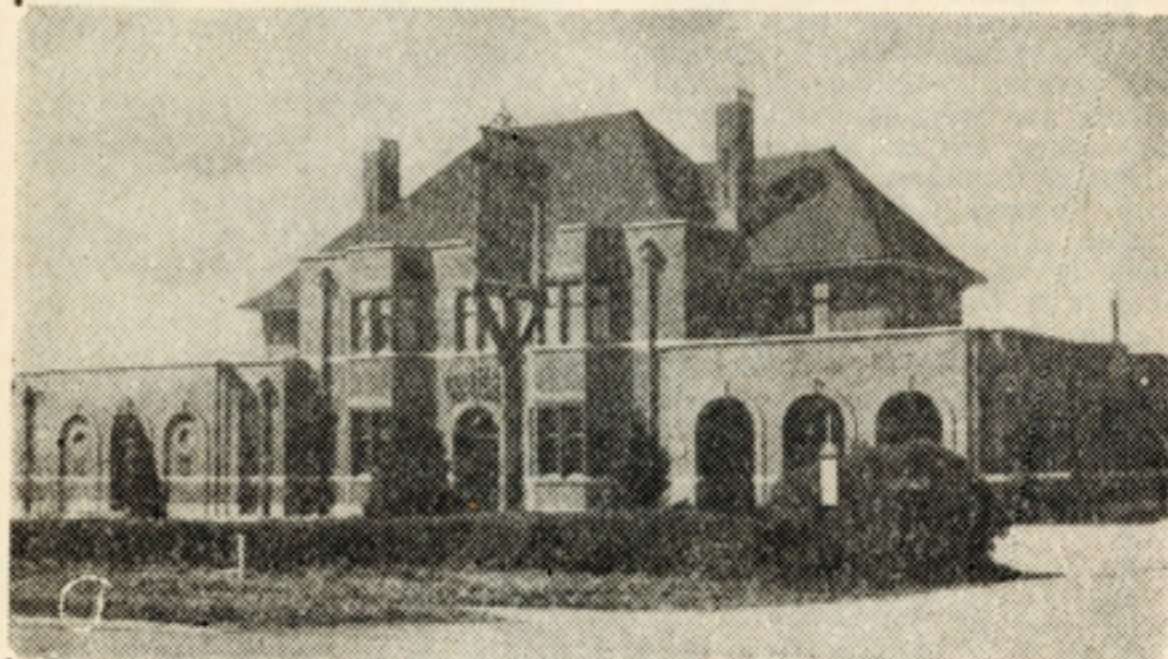
Did not miss a first team match last season until he was omitted from the team which played at Chesterfield on Easter Saturday. First Gipton, then Owen, filled the centre-half position, and Hall had to be content with reserve team status for the last week or two. He will undoubtedly make a great bid to regain his place this campaign, and if he strikes his best form, might well present the manager with a real problem. First signed for the Town in 1942, when he was playing for St. Albans City, and had a deal of experience in war-time football, both at centre-half and centre-forward.



THE WARDEN TAVERN

PHONE: ICKNIELD 277

2½ miles out on the New Bedford Road



LUNCHEONS WEDDING RECEPTIONS

SOCIAL FUNCTIONS & EVENING PARTIES
(Winter months only)

J. W. GREEN'S PRIZE ALES & STOUTS

Fully Licensed :: Large Car Park

PROPRIETOR: TOM HODGSON, Ex-Captain Luton Town F.C.

DOUGLAS GARDINER (Wing-half)

Now that George Duke has been transferred, Doug, is the only remaining player with pre-war associations with the club, for he was signed from Auchinleck Talbot, Scottish junior club in 1938. Not until after the war, and following over three years as a prisoner-of-war in Germany, did he secure first team recognition, but he has proved remarkably consistent since, and was captain of the team last season. A tremendous worker and a tenacious tackler who also distributes the ball to full advantage, Gardiner is one of the best servants the club has ever had.



LESLIE HALL (Centre-half)

Did not miss a first team match last season until he was omitted from the team which played at Chesterfield on Easter Saturday. First Gripton, then Owen, filled the centre-half position, and Hall had to be content with reserve team status for the last week or two. He will undoubtedly make a great bid to regain his place this campaign, and if he strikes his best form, might well present the manager with a real problem. First signed for the Town in 1942, when he was playing for St. Albans City, and had a deal of experience in war-time football, both at centre-half and centre-forward.



SPECIAL VALUE

in

*Two-Piece
Suits*

READY
TO
WEAR

*Sports
Jackets*

FLANNEL

and

WORSTED
TROUSERS

LUTON CLOTHIERS

OUR ONLY ADDRESS

54 WELLINGTON STREET 54
LUTON

RAYMOND RUFFETT

(Wing-half)

Received his first chance in the League team at Bury last season, but was unfortunate enough to be injured and, after being on the inactive list for a few weeks, could not get in again. Is one of the few Luton-born players on the books, and was spotted during the war when he did well in the Town team. Previously, he had played for Christ Church and before that had gained honours as a school-boy. Is beginning his third season as a professional, and his progress will be watched keenly, for he is an excellent ball player.



BILLY GRIPTON

(Centre-half)

His cool, calculating play had much to do with the success of the Town Reserves in the Combination last season, and he played many brilliant games for them. Has a shrewd positional sense and never gets flustered under the heaviest pressure. Begins his second term with the Town, for he joined them at a fee of £3,000 from West Bromwich Albion just over 12 months ago. For the Albion, he made 207 first team appearances, including those in war-time, but found few opportunities of League team service last season, when his outings were limited to three, one of which was at left-half.

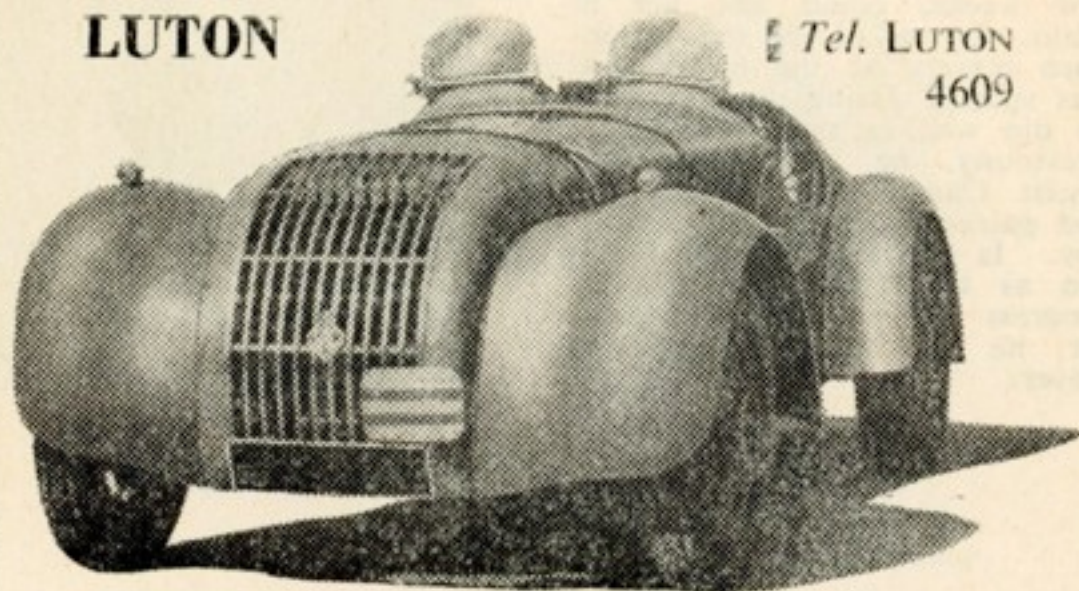


H. C. FRESHWATER

Rear of 36^D LEAGRAVE ROAD

LUTON

Tel. LUTON
4609



PANEL BEATING : CELLULOSE SPRAYING
MOTOR RADIATOR REPAIRS : WINDSCREENS
HEADLAMPS : WELDING : SHEET METAL WORK
EXPERIMENTAL MOTOR-RACING BODY-WORK
PETROL TANKS : COPPERSMITH

Why not let us give you a free estimate for Cellulose Spraying your car to give it that new look. We are specialists in all classes of Panel Beating and Welding. If your car or van has rusty or eaten away doors, body or wings, we can make it as new again

**MOTOR
SMASHES
OUR**

SPECIALITY Trade enquiries invited.

We can quote a Cellulose Spraying price to suit every motorist's pocket, so why not call in to see us or give us a ring. Phone LUTON 4609.

BILLY COLLINS (Wing-half)

When the Town decided to give Collins a month's trial the season before last, they picked up a very useful player who has given them splendid service. Shortly after being signed on a full-time basis, he made his English League debut in the last match of the 1947-48 season, and for a time early last campaign held down the right-half position. In the Reserves he took a turn at outside-right and inside-right when necessity demanded it, but seems more at home at right-half, where his displays in the closing weeks caused considerable interest to scouts from other clubs.



NORMAN DAY (Wing-half)

Another product of local football, he captained the Bedfordshire youth team, and afterwards played for Hitchin Town. Became a full-time professional after demobilisation from the R.A.F. last season and was unlucky enough to meet with a bad ankle injury which set him back considerably. Made six appearances in the Reserve team, and will be expected to make strides this season. Regarded as distinctly promising, he shows cleverness and resource in attack and distributes the ball accurately.



LUTON TOWN F.C. 1st XI FIXTURES, 1949-50

DIVISION II

Date	Opponents	Ground	Goals		Date	Opponents	Ground	Goals	
			For	Against				For	Against
1949					1950				
Aug. 20	West Ham	H	(0—1)		Jan. 7	(3)			
" 24	Coventry City	H	(2—0)		" 14	Queen's Park Rangers	H	(0—0)	
" 27	Sheffield United	A	(—)		" 21	Preston North End	A	(—)	
" 29	Coventry City	A	(0—2)		Feb. 4	Swansea Town	H	(—)	
Sept. 3	Grimsby Town	H	(1—1)		" 11	(5)			
" 7	Bradford	A	(1—4)		" 28	(4)			
" 10	Queen's Park Rangers	A	(3—0)		" 18	Leeds United	A	(0—2)	
" 17	Preston North End	H	(—)		" 25	Leicester City	A	(1—1)	
" 24	Swansea Town	A	(—)		Mar. 4	(6) Bury	H	(1—0)	
Oct. 1	Leeds United	H	(0—0)		" 11	Tottenham Hotspur	A	(1—2)	
" 8	Leicester City	H	(1—1)		" 18	Cardiff City	H	(3—0)	
" 15	Bury	A	(1—3)		" 25	(S.F.) Blackburn Rovers	A	(1—4)	
" 22	Tottenham Hotspur	H	(1—1)		April 1	Sheffield Wednesday	H	(2—1)	
" 29	Cardiff City	A	(3—3)		" 7	Barnsley	H	(1—0)	
Nov. 5	Blackburn Rovers	H	(2—0)		" 8	Plymouth Argyle	A	(1—1)	
" 12	Brentford	A	(0—2)		" 10	Barnsley	A	(2—1)	
" 19	Hull City	H	(—)		" 15	Brentford	H	(2—1)	
" 26	(1) Sheffield Wednesday	A	(0—0)		" 22	Hull City	A	(—)	
Dec. 3	Plymouth Argyle	H	(3—1)		" 29	(F.) Chesterfield	H	(1—0)	
" 10	(2) Chesterfield	A	(0—1)		May 6	Bradford	H	(0—1)	
" 17	West Ham	A	(1—0)						
" 24	Sheffield United	H	(—)						
" 26	Southampton	H	(1—1)						
" 27	Southampton	A	(1—1)						
" 31	Grimsby Town	A	(1—2)						

These fixtures are the copyright of the Football League, Ltd., and are reproduced with their permission.

These fixtures are the copyright of the Football League, Ltd., and are reproduced with their permission.

The figures in parentheses are results of corresponding matches last season. Sheffield United and Preston N.E. take the places of Fulham and West Bromwich Albion, promoted to Division I, and Hull City and Swansea Town replace Lincoln City and Nottingham Forest, relegated to Division III.

J.W. GREEN'S

Quality Ales

J. W. GREEN LTD., THE BREWERY, LUTON.

Telephone: LUTON 3131

"VAC-SWEEP"

Chimney Sweeping Service

LUTON BRANCH

EST. 1945

The proprietors are the patentees and sole operators, within a 20 miles radius of Luton, of this very popular form of chimney sweeping.

CHIMNEYS BRUSH SWEEP

Soot controlled by suction
as it falls.

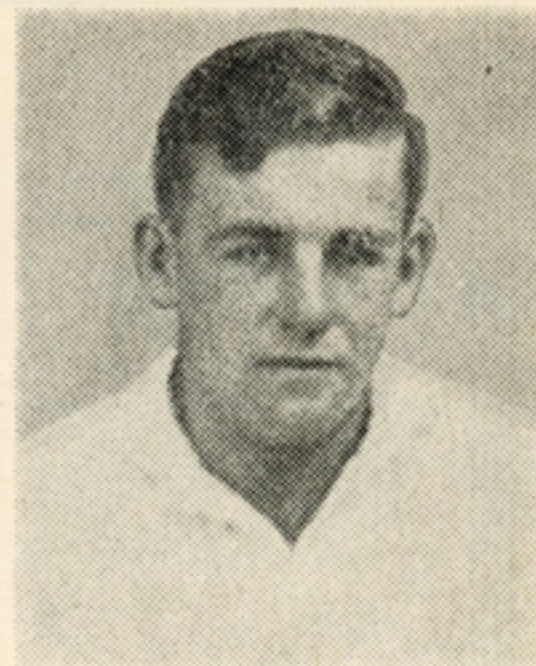
Call or write :

88 WALLER AVENUE,
LUTON

TELEPHONE: LUTON 1133

JOSEPH THOMPSON (Wing-half)

Is not likely to be seen in the Town's colours yet awhile, for he is still serving with the Army overseas, but he has re-signed and should be available soon. A strong player who has developed considerably physically whilst in the Army, Thompson first signed professional forms when 18 in May, 1946. Made 19 Reserve team appearances in season 1946-47 but since then Army service has limited his appearances, and he was not seen at all last season. May prove to be a decided asset, for he was full of promise a couple of seasons ago. Began his career with Electrolux and played for the Bedfordshire Youth XI.



PETER SMALL (Outside-right)

At his best is an extremely dangerous raider, fast and incisive, and he worried several good-class full-backs last season. Lacked ball control at times, but if he can add this to his natural speed and dash, he may turn out to be the best proposition the Town have had at outside-right for some time. Cost the Town only a signing-on fee when they obtained his services two years ago, after their former centre-forward, Hughie Billington, had recommended him as a player of considerable promise. Played for Horsham before he joined the Army.



☆

Benskin's Watford Brewery Ltd.

Watford, Herts.

☆

Telephone : Watford 44414-5

CHARLIE BURTENSHAW (Outside-right)

It was as a goal-scoring inside-right or centre-forward that Charlie first attracted the Town's attention when playing for Southwick in the Sussex Senior League during the season before last. His signing for the Town followed a trial against tough opposition in Birmingham Reserves. For a time he was kept in the middle and scored a number of goals. Last season, he came into the senior side at outside-left in an emergency, and did so well there that when the outside-right problem cropped up again, was given his chance to solve it and put up some very good performances there. His build makes him better suited to the wing than to the hurly-burly of the middle of the field. He is fast, and centres a good ball.



SAMMY NELSON (Outside-right)

Has not lived up to the reputation with which he came, for he was Stanley Matthews's understudy at Blackpool and had a regular place in the Seaside's League team at one time. Brilliant displays in the practice games earned him selection for the Town's first team last season, but he held his place for only the first three matches, and could not get in again. An Irishman, he had quite a big reputation in his own country. Nelson is a clever ball player, but lacks the speed which is so essential in the Second Division.

Beds & Herts Saturday Telegraph

The Popular Weekend Paper

12 noon Edition—All the latest Football News, Teams, etc. Racing Programmes and Forecasts.

3 p.m. Edition—General Local News, Pictures, etc.

6 p.m. Edition—All the Football and Racing Results. Football Reports of all 2nd Division Matches and Local Amateur Clubs, etc.

Make sure of your copy by placing a regular order with your newsagent.

TOMMY KIERNAN (Inside-right)

One of the most talented inside-forwards the Town have had for some time, Kiernan is a Scot who came to the fore with Albion Rovers whom he helped to win promotion. Army service overseas followed, and in 1945 he was transferred to Glasgow Celtic for £4,000. During his spell with them he was chosen to play for the Scottish League against the Football League at Hampden Park, and then followed his transfer to Stoke City for £9,000. Injury cost him his place in the City team early last season, and the Town secured his transfer for £8,500. Made a brilliant start with Luton, and his play in the Cup-ties with Leicester drew much favourable comment.

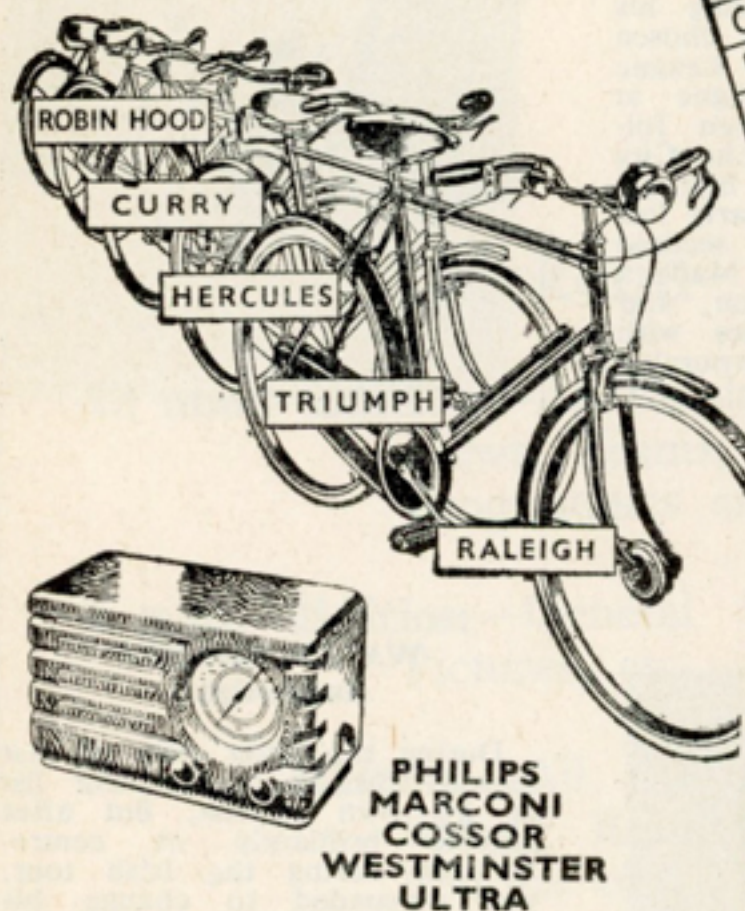


WALLY SHANKS (Inside-right)

During the latter part of last season was on the transfer list at his own request, but after playing brilliantly at centre-forward during the Irish tour, was persuaded to change his mind, and re-sign for the Town. Is an extremely useful player, who appeared mostly at inside-right last term, and did well in the first team until the advent of Tommy Kiernan meant his return to reserve team duty. Was signed originally as an outside-right after he had had a month's trial with Chelsea. Joe Payne thought highly of him, and so did fellow-Scot, Tommy Walker, who recommended him to the Stamford Bridge club.



When you deal with CURRYS you back a winner every time



STOKE	ASTON VILLA	1	X
CHELSEA	WOLVES	X	2
EVERTON	DERBY	1	1
MAN. UTD.	B'POOL		

You win, because only Currys can offer you such a wide range that you are SURE of getting the cycle or radio *you* want. You win again at Currys, because ALL the best and latest models are *always* there. You win on quality, on service, and on experienced advice. That's why we say, "Hurry to Currys for your cycle or radio!"

IMMEDIATE DELIVERY • CASH OR TERMS

1 Park Street, LUTON

TEL. 648

19 Market Place

HITCHIN

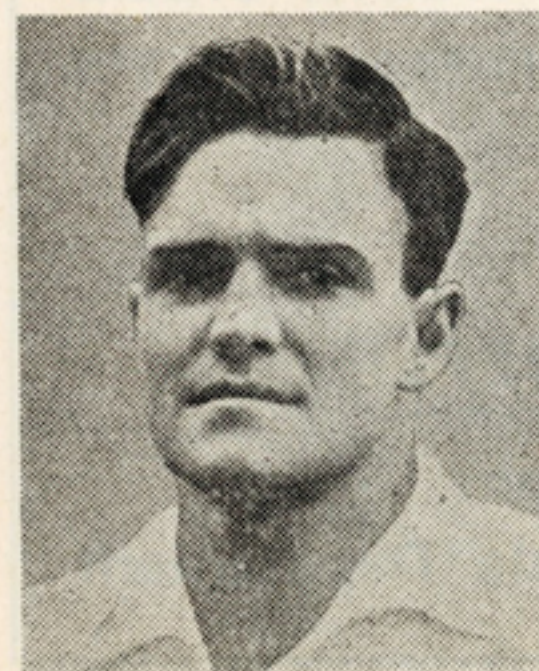
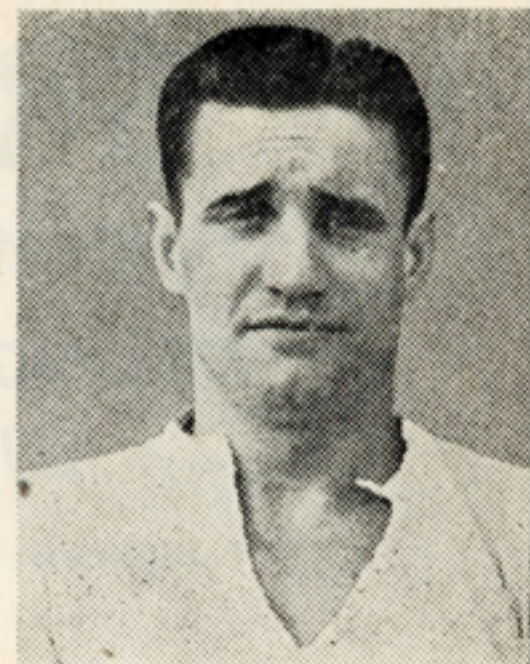
TEL. 54



PTA

JACK TAYLOR (Inside-forward)

This 21-years-old player signed from Stockton last February was quick to take his chance in the League side last season and looks to be one of the most promising players for this position. The Town have had for some time. From the North-eastern League to the Second Division in a little under four months was a big step for him, but he pleased by his quiet, thoughtful play and undoubtedly has a football brain. Spotted originally by Dick Trembath, the Town's scout in the North-eastern area, Taylor was the centre of attention for several other League clubs, and the Town were only just in time to sign him.



BILLY ARNISON (Centre-forward)

The Town's leading goal-scorer last season with 19 League and Cup goals in 32 appearances. His tally would have been much greater but for injuries which caused him to have two lengthy spells on the injured list. Much will be hoped from him this season, for he is a strong, bustling leader with a tremendous shot. A South African he has been over there for his summer holiday. Billy first came to Britain to play for Glasgow Rangers from whom the Town signed him for £8,000 just before the start of last season. Is studying to become a qualified physio-therapist.

L. GREENER

WINE MERCHANT

60 WELLINGTON STREET
LUTON

Telephone: LUTON 2926

IMPORTERS OF WINES AND SPIRITS
AGENTS FOR BEERS, STOUTS, CYDERS
AND SCHWEPPES MINERAL WATERS

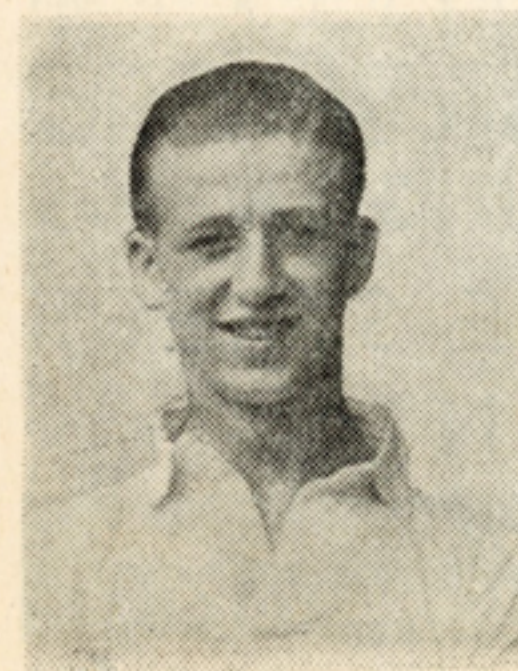
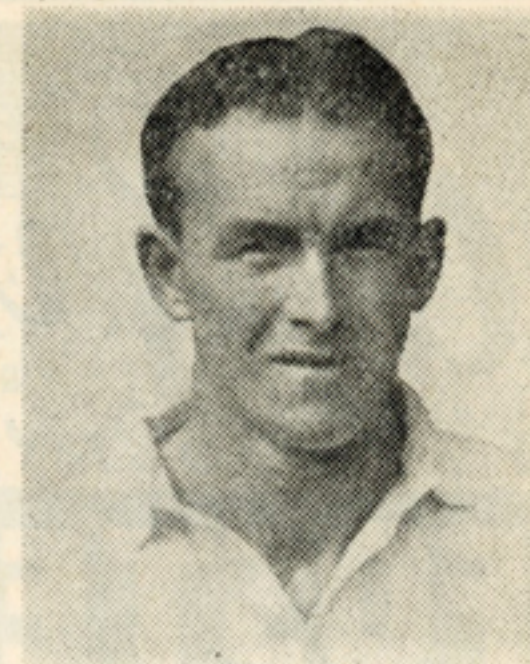
CLUBS SUPPLIED

Full Price List From
Wholesale Department

BILL BURTENSHAW

(Inside Forward)

Brother of Charlie and has sampled a variety of positions since he joined the Town. With Southwick, he mostly played at centre-half but often took a turn at inside forward, in which berth he had his first trial with the Town. Did so well that he went into the League side in the first match of the season. Then followed a long spell as the Reserves' centre-forward and in the later weeks of the season he played at centre-half and left-half. Was the leading scorer for the Reserves with 20 goals. Is tall and well built, and knows the way to goal.



LAWRENCE LAWTON

(Centre-forward or Inside-forward)

Another from the prolific North-eastern nursery where he played with outstanding success with Seaham United. Figured in one of the Town's trial matches last season, and was later fixed up as a professional. Began brightly in the Reserves and obviously has football ability, though he is rather inclined to over-do the frills. Is only 21, so has his whole future before him, and a big opportunity of making good with the Town this season.

A Grand spot

FOSTER BROTHERS

for EVERY MAN'S CLOTHING
AND OUTFITTING NEEDS
22-24 GEORGE STREET
LUTON

*A British Family Firm established and
directed by FOSTERS since 1876*

BOBBIE HORNER
(Inside-forward)

A protege of Tom Mackey and the youngest player on the books. Hails from Ferryhill, Co. Durham, and first came to the Town's notice when he was only 15. Gained valuable experience with the Colts last season and seems to be developing along the right lines. Is brimful of football and is quick to learn. Is one of a number of young players from whom the Town are hoping for much in the not too distant future, but the policy will be to bring him along quietly.



LESLIE SLATTER
(Inside-forward)

Also hit the highlights in youth football for he captained the English Boys' Clubs team against the A.T.C. in the match at Wembley last season. Also gained schoolboy honours and played in Youth internationals. The Town took a fancy to him when he played in the Boys' Clubs international trial at Kenilworth-road last February, and he became a professional with them soon afterwards. Hails from Reading where he played for Mount Pleasant Y.C. Plays like an old hand, for he has good ball control and ability to outwit an opponent.



Play Safe!

TO MOTORISTS

Fit—

Triplex^{REGD.}

—and be Safe

CONSULT

OGDEN & CLEAVER LTD.

(GLASS DEPT.)

STUART STREET

LUTON

Phone 746-7



ALSO FOR
RE-SILVERING
PLATE & SHEET GLASS

BILLY WAUGH

(Outside-left)

Has missed only 14 League matches for the Town in the last three seasons, and leads the way in the matter of League appearances with 114. A Scot from Edinburgh, he is one of the cleverest wingers in the Second Division, and when at his best is a veritable box of tricks. Is not outstanding as a marksman, for he seems to be content to make openings for others, in which he achieves considerable success. Had a trial with Hearts just before war broke out and first played for Luton in 1944 when he scored a goal on his debut against Leyton Orient. Can also take a turn at outside-right when occasion demands.



NEVILLE RONSON

(Inside-forward)

His appearances this season may be fleeting, for he is doing his Army service. 19 years old, the Town signed him as a professional at the end of last year, and he was developing along the right lines in the Colts' team. Has an outstanding career in youth football, for at 15 he played for the Boys' Brigade team which won the Northampton B.B. League, and played for the Battalion against Nottingham. Captained Northampton Queen Eleanor when they won the Northants Minor Cup and League in the same season, and played for Northamptonshire Youth team four times. Is a very useful cricketer and opens the bowling for his club in the Northampton Town League.



LUTON TOWN F.C. 2nd XI FIXTURES, 1949-50

FOOTBALL COMBINATION

Date	Opponents	Ground	Goals	
1949			For	Against
Aug. 20	Reading	A		
„ 22	Millwall	A		
„ 27	Southend United	H		
„ 31	Coventry City	H		
Sept. 3	Northampton Town	A		
„ 7	Queen's Park Rangers	H		
„ 10	Northampton Town	H		
„ 14	Birmingham City	H		
„ 17	Swansea Town	A		
„ 21	Birmingham City	A		
„ 24	Arsenal	H		
„ 26	Coventry City	A		
Oct. 1	Queen's Park Rangers	A		
„ 8	Southend United	A		
„ 15	Fulham	H		
„ 22	Crystal Palace	A		
„ 29	Cardiff City	H		
Nov. 5	Bristol Rovers	A		
„ 12	Leyton Orient	H		
„ 19	Leicester City	A		
„ 26	Bristol Rovers	H		
Dec. 3	Leyton Orient	A		
„ 10	Leicester City	H		
„ 17	Reading	H		
„ 24				
„ 26	Arsenal	A		
„ 27	Swansea Town	H		

Date	Opponents	Ground	Goals	
			For	Against
1950				
April 10	Millwall	H		
" 15	Fulham	A		
" 22	Crystal Palace	H		
" 29	Cardiff City	A		
COMBINATION CUP				
1949				
Dec. 31	Northampton Town	H		
1950				
Jan. 7	Birmingham City	A		
" 14	Norwich City	A		
" 21	Watford	H		
" 28				
Feb. 4	Leicester City	A		
" 11	Birmingham City	H		
" 18	Norwich City	H		
" 25	Ipswich Town	H		
Mar. 4				
" 11	Leicester City	H		
" 18				
" 25	Northampton Town	A		
April 1	Watford	A		
" 7	Ipswich Town	A		
" 8	Coventry City	H		
To be arranged—Coventry City				

OVERCOATS, SPORTS COATS,

MARES FOR

CHARLES MARES LTD., 65-67 GEORGE ST., LUTON

WOOLLIES, SCARVES, GLOVES, etc.

MEN'S WEAR

18 Market Place, St. Albans. 28 Gold St., Kettering

CAMDEN MOTORS LTD.

LAKE ST., LEIGHTON BUZZARD

Telephone : 3115 and 2381

for



The Largest Selection in the Country
Over 220 Cars in Stock

**ROAD TESTS GIVEN WITHOUT
OBLIGATION AT OUR PREMISES**

Three months' written guarantee given with all cars over
£150. Exchanges, Part Exchanges, Hire Purchase arranged.

Write for 16 page List

CARS BOUGHT FOR SPOT CASH

Open 9 a.m.—7 p.m. DAILY. SUNDAYS 10 a.m.—2 p.m.
Or by appointment any time.

Situated 1 minute from Bus Terminus and L.M.S. Railway Station.

LUTON TOWN COLTS

SOUTH MIDLANDS LEAGUE FIXTURES, 1949-50

1949	1950
Aug. 20—Hitchin Rd. O.B. A	Jan. 14—Cambridge T. ..H
„ 27—Bletchley T.A	„ 21—Arlesey T.A
Sept. 10—Stony Stratford A	„ 28—Stony Stratford H
„ 24—Kempston Rvs. A	Feb. 4—Bedford St.
Oct. 1—Wolverton T. ..H	„ Cuthbert ..A
„ 15—Bedford St.	„ 11—Bletchley T.H
„ Cuthbert..H	„ 18—Wootton B.C. ..H
„ 29—Peartree OB. ..H	„ 25—Rushden T.H
Nov. 5—Potton Utd. ..A	Mar. 4—StewartbyA
„ 12—Arlesey T.H	„ 11—Kempston Rvs. H
„ 19—Peartree O.B. ..A	„ 18—Marston Shelton A
Dec. 3—Wolverton T. ..A	„ 25—Hitchin Rd. O.B. H
„ 10—Cambridge T. ..A	Apl. 15—Rushden T.A
„ 17—Potton Utd.H	„ 22—StewartbyH
„ 31—Marston Shelton H	„ 29—Wootton B.C. ..A

Matches with Vauxhall Motors are to be mutually arranged
between the clubs, probably in mid-week. Home matches
will be played on Skefko's ground.

LUTON AMATEUR F.C.

SPARTAN LEAGUE (Western Section) FIXTURES, 1949-50

1949	1950
Aug. 20—Lyons Club ..A	Jan. 7—Hemel Hemp-
„ 24—Leighton Utd. ..A	„ stead Tn. ..A
„ 27—PinnerA	„ 28—London Poly ..H
„ 31—Leighton Utd. ..H	Feb. 11—Henley Tn.H
Sept. 3—Potton Utd. (F.A.	„ 18—Wembley Tn. ..A
„ Cup) ..A	„ 25—PinnerH
„ 10—Amersham Tn...H	Mar. 18—London Poly ..A
„ 24—Wembley Tn. ..H	„ 25—Rickmansworth
Oct. 1—Amersham Tn...A	„ Tn. ..A
„ 8—YiewsleyH	Apl. 1—Chelsea Mar. ..H
„ 15—YiewsleyA	„ 7—Marlow Tn.H
„ 22—Lyons ClubH	„ 8—Rickmansworth
Dec. 3—Berkhamsted Tn. A	„ Tn. ..H
„ 10—Hemel Hemp-	„ 10—Marlow Tn.A
„ stead Tn. ..H	„ 22—Chelsea Mar. ..A
„ 17—Henley Tn.A	
„ 24—Berkhamsted Tn. H	

31, 32, 33 and 35 Seater

Modern Luxury Coaches

for

Football Matches,
Ice Hockey, Theatres
and all occasions



SEAMARKS BROS.,

43a, BURY PARK ROAD, LUTON

Phone: LUTON 731

HIGH STREET, WESTONING

Phone: FLITWICK 314

VAUXHALL MOTORS F.C.

SPARTAN LEAGUE (Premier Division) FIXTURES, 1949-50

Aug.	20—Huntley and Palmers	A
„	25—Cambridge Town	A
„	27—Harrow Town	A
„	31—Cambridge Town	H
Sept.	3—Harrow Town	H
„	7—Briggs Sports	A
„	10—Wolverton Town	H
„	24—Brentwood and Warley..	A
Oct.	8—Letchworth Town	A
„	15—Metropolitan Police	A
„	29—Aylesbury Town	H
Nov.	26—Stevenage Town	H
Dec.	3—Brentwood and Warley	H
„	17—Hoddesdon Town	H
„	24—Hoddesdon Town	A
„	31—Stevenage Town	A
Jan.	21—Briggs Sports	H
„	28—Slough Centre	A
Feb.	4—Letchworth Town	H
„	25—Willesden	A
Mar.	4—Willesdon	H
„	11—Aylesbury Town	A
„	25—Slough Centre	H
April	8—Wolverton Town	A
„	15—Huntley and Palmers	H
„	22—Metropolitan Police	H

Wray's

4, 6 & 8 CASTLE STREET

for

Men's and Boys' Clothing,
Suits, Trousers, Jackets,
Shirts, Underwear and
Overalls

Boots, Shoes and Wellingtons

Jewellery, Clocks, Watches
and Miscellaneous Goods

*See our special advertisement in
"The Luton News."*

Phone : Luton 1241

HITCHIN TOWN F.C.

ATHENIAN LEAGUE FIXTURES, 1949-50

1949			
Aug. 20—HendonH	„ 29—Sutton Utd.H
„ 27—SouthallH	Nov. 5—BarnetA
Sept. 3—BarkingA	„ 19—SouthallA
„ 10—HayesH	„ 26—WealdstoneH
„ 17—Houghton Rgs. or Bedford Cor. F.A. Cup ..H		Dec. 3—FinchleyA
„ 24—Tootingg & M. A		„ 10—LeytonH
Oct. 8—BarkingH	„ 17—FinchleyH
„ 15—RedhillH	„ 24—EnfieldA
„ 22—WealdstoneA	„ 26—EnfieldH
		„ 31—HendonA
1950			
		Jan. 7—RedhillA

Fixtures after January 7 are not made until later
in the season.

LETCHWORTH TOWN F.C.

SPARTAN LEAGUE (Premier Division) FIXTURES, 1949-50

1949		1950	
Aug. 20—Slough Centre	..A	Jan. 14—Hoddesdon Tn.	A
„ 25—Stevenage Tn.	..H	Feb. 4—Vauxhall Mtrs.	..A
„ 27—WillesdenA	„ 18—Cambridge Tn.	H
„ 31—Stevenage Tn.	..A	„ 25—Wolverton Tn.	A
Sept. 17—St. Neots St. Mary's F.A. Cup A		Mar. 4—Met. PoliceA
Oct. 8—Vauxhall Mtrs.	..H	„ 11—Hoddesdon Tn.	H
„ 15—Aylesbury Utd.	A	„ 18—Huntley & P.	..A
Nov. 5—Harrow Tn.A	„ 25—Briggs Sports	..A
„ 12—Briggs Sports	..H	Apl. 1—Met. PoliceH
„ 19—Cambridge Tn.	A	„ 7—Brentwood & W.	A
„ 26—WillesdenH	„ 8—Harrow Tn.H
Dec. 3—Aylesbury Utd.	H	„ 10—Brentwood & W.	H
„ 17—Huntley & P.	..H	„ 22—Slough Centre	..H
„ 24—Wolverton Tn.	..H		

Phone :
LUTON
1108

KNOW LUTON WELL

Phone :
LUTON
1108

VISIT

HOME SUPPLIES

Government Surplus Contractors
and
General Merchants

96a WELLINGTON STREET

(Corner Shop Second Road Junction)

And you too will say

"Just the Job"

And be satisfied

Something for all trades, all purposes

LUTON DISTRICT & SOUTH BEDS. LEAGUE

President: Major-General Sir Harold Wernher, K.C.V.O.

Senior Vice-President: Lady Zia Wernher.

Life Members:

Messrs. Charles Green, F. W. Haddon, J. J. Hunt.

Chairman: Mr. W. Pease.

Vice-Chairman: Mr. P. Stevens.

Hon. Secretary: Mr. H. C. Oliver, 17, Mayne Avenue,
Leagrave, Luton. Telephone: Luton 4127.

Hon. Treasurer: Mr. W. J. Emery.

Hon. Press Secretary: Mr. E. H. Pugh.

Executive Council:

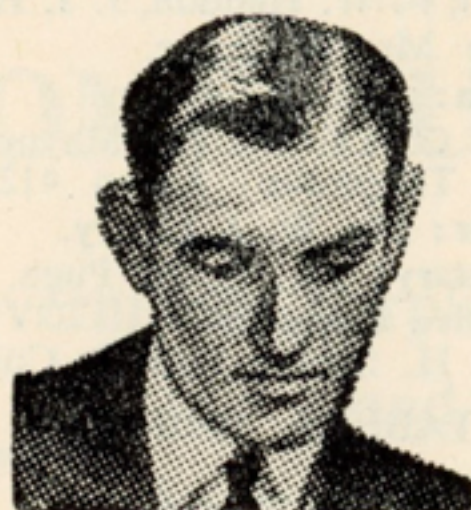
Messrs. R. Cooper, H. Sharpe and E. Cullis.

LEAGUE TABLES, 1948-49

Division I	P.	W.	D.	L.	Goals			P.
					F.	A.		
Houghton Rangers	26	23	0	3	130	27		46
Kent's Athletic	26	19	5	2	110	35		43
Shillington	26	18	5	3	103	33		41
Hitchin-road Old Boys ..	26	19	2	5	104	42		40
Toddington Rovers	26	15	3	8	81	52		33
Cockernhoe	26	14	3	9	63	42		31
Limbury O.B.	26	13	1	12	70	55		27
Norton Rangers	26	12	3	11	66	62		27
Luton Brewery	26	11	3	12	68	80		25
Baldock O.d Boys	26	5	4	17	60	105		14
Linslade Sports	26	5	2	19	40	88		12
Roote's Sports	26	5	2	19	37	120		12
Crusaders	26	4	3	19	41	120		11
Farley Rangers	26	0	2	24	27	139		2
Division II								
East Park	22	15	5	2	76	31		35
Eaton Bray	22	17	1	4	83	39		35
Glendale	22	16	1	5	73	34		33
Barton Rovers	22	13	3	6	60	33		29
Napier Sports	22	12	4	6	68	41		28
Houghton Rangers	22	10	2	10	70	54		22
Streatley Sports	22	9	3	10	59	63		21
Chaul End "A"	22	8	3	11	45	47		19
Dagnall	22	8	1	13	69	75		17
Lilley Rovers	22	4	2	16	33	85		10
Norton Rangers	22	3	2	17	47	109		8
Percival Athletic	22	3	1	18	34	106		7

East Park won the championship after a play-off.

PINOX



HAIR CREAM

Excelled by None
A Perfect Dressing for the Hair

PRICE 1/9 PER JAR

(INCLUDING PURCHASE TAX)

OBTAINABLE FROM HAIRDRESSERS
 :: AND GENERAL STORES ::

Manufactured and distributed by P. G. Pinnock and Sons Ltd.
39/41 Park Street West, Luton

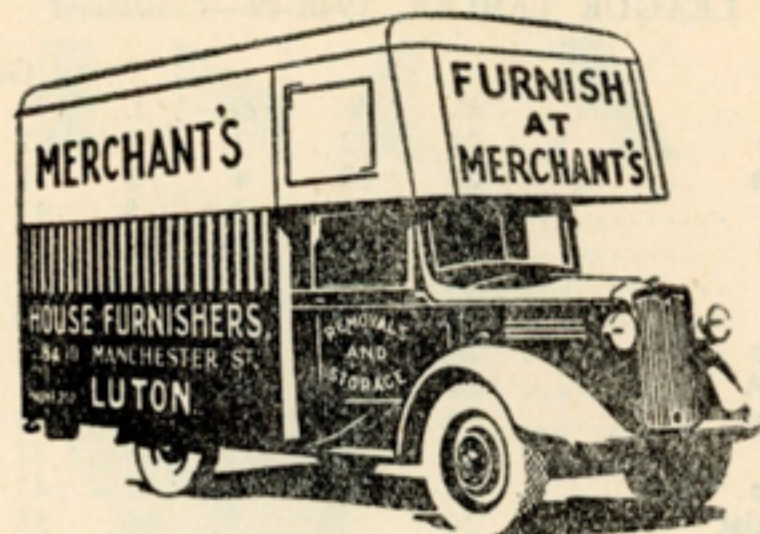
LUTON DISTRICT & SOUTH BEDS. LEAGUE

LEAGUE TABLES, 1948-49—Continued

Division III	P.	W.	D.	L.	Goals		P.
					F.	A.	
Craig Athletic	24	22	2	0	87	38	46
Spandit Sports	24	17	4	3	71	31	38
Caddington	24	16	3	5	93	47	35
Heath United	24	11	7	6	65	49	29
Totternhoe	24	12	4	8	62	42	28
Hockliffe	24	11	5	8	65	51	27
Davis Athletic	24	11	3	10	56	63	25
Shillington "A"	24	8	4	12	47	55	20
Old Lutonians	24	7	3	14	40	56	17
Waterlow's	24	6	3	15	37	61	15
Napier Sports "A"	24	6	1	17	47	85	13
Limbury Baptist	24	3	5	16	55	95	11
Electrolux	24	2	4	18	36	88	8

Division IV							
Royal Marines	24	24	0	0	128	17	48
Kent's Athletic "B"	24	20	1	3	130	36	41
Cockernhoe	24	13	4	7	79	61	30
Kensworth	24	13	3	8	91	50	29
Pioneer Corinthians	24	12	4	8	54	53	28
Glendale	24	11	3	10	68	54	25
Adamant Athletic	24	9	5	10	61	60	23
Flitton and Greenfield	24	10	2	12	46	79	22
Luton United	24	9	1	14	71	101	19
Boys' Brigade Seniors	24	7	4	13	47	73	18
Horseshoe Athletic	24	7	1	16	37	100	15
Harlington	24	4	1	19	43	98	9
Chalton Rovers	24	2	3	19	19	92	7

Division V							
Luton Co-op Y.C.	24	18	3	3	102	33	39
Luton Social	24	18	2	4	106	28	38
Hayward Tylers	24	17	3	4	118	36	37
Barton Rovers	24	16	4	4	91	54	36
Houghton Rangers	24	16	2	6	83	35	34
West Park	24	14	2	8	74	45	30
Eaton Bray	24	8	6	10	65	79	22
Percival Athletic	24	8	2	14	63	68	20
Westoning	24	5	3	16	52	84	13
Caddington	24	7	1	16	53	94	13
Streatley Sports "A"	24	6	0	18	38	101	12
R.A.F. Association	24	5	2	17	42	107	12
St. Peter's Rover Crew ..	24	2	0	22	47	170	4



★ REMOVALS AND STORAGE

FURNISH

AT

MERCHANT'S

8 & 10 MANCHESTER ST.

Phone 252 **LUTON** Est. 1855

LUTON & SOUTH BEDS. YOUTH LEAGUE

President: Lady Zia Wernher.

Chairman: Mr. S. Smith. Vice-Chairman: Mr. A. E. Wickson.
Hon. Secretary and Treasurer: Mr. H. A. Chambers, 160, Hitchin-
road, Luton, Telephone, Luton 3138.

Executive Council: Messrs. E. H. Pugh, K. Edge, T. C. Potts P.
Coley.

FINAL POSITIONS, 1948-49

DIVISION 14/16 YEARS	P.	W.	D.	L.	Goals		P.
					F.	A.	
West Park	16	15	1	0	80	7	31
Limbury Baptist	16	11	4	1	77	21	26
Vauxhall Motors	16	11	1	4	58	30	23
Old Beechillians	16	8	0	8	50	58	16
Luton B.C.	16	7	1	8	56	49	15
Luton Crus. J.	16	6	2	8	32	54	14
Caddington Y.C.	16	4	2	10	25	56	10
Chaul End A.	16	3	0	13	25	23	6
Luton Army C.	16	1	1	14	13	107	3

DIVISION 14/18 YEARS "A"

Park Rangers	20	20	0	0	106	12	40
Hart Hill Rangers	20	16	1	3	130	28	33
Beechwood Y.C.	20	14	1	5	80	50	29
17th Luton Coy B.B.	20	11	3	6	65	58	25
Lansdowne S.	20	9	4	7	67	50	22
Moordale Ath.	20	10	0	10	54	82	20
Lyndale Ath.	20	9	1	10	63	55	19
Luton Argyle	20	5	2	13	43	77	12
Limbury Rangers	20	5	1	14	42	72	11
Harlington Y.C.	20	4	1	15	37	103	9
St. Columba Youth Club	20	0	0	20	17	118	0

DIVISION 14/18 YEARS "B"

Vauxhall Jnrs.	24	22	1	1	179	21	45
West Park J.	24	20	2	2	125	28	42
Waterlow-road Boys' Club	24	20	1	3	113	47	41
Luton Co-op Youth Club	24	16	2	6	103	46	34
Luton Argyle J.	24	13	2	9	77	54	28
Limbury B. J.	24	10	4	10	72	73	24
Lansdowne S. J.	24	10	1	13	61	82	21
Langley Rangers	24	9	1	14	74	98	19
Beechwood Y.C.J.	24	7	4	13	84	68	18
Caddington Y.C. Juniors ..	24	8	1	15	54	100	17
Dunstable P. B.C.	24	5	2	17	47	83	12
Luton Boys' Club Colts	24	4	1	19	41	139	9
1st Coy Luton B.B.	24	1	0	23	24	180	2

YOUTH FOOTBALL CLUBS IN SOUTH BEDS.

a Hon. Secretary's name and address. b Colours.

A.T.C., Dunstable.—a F. Goddard, 460 Squadron A.T.C., Victoria Street, Dunstable. b Air Force blue.

Barton Y.C.—a M. Horsler, Brook Green Farm, Sharpenhoe Road, Barton. b Amber shirts with white collars.

Beechwood Y.C.—a F. Heelis, 9, Marston Gardens, Luton. b Blue and white.

Chalgrave.—a J. Cooper, 8, Wingfield Road, Tebworth, near Leighton Buzzard. b Black and amber.

Caddington Y.C.—a W. Dugdale, 9, The Green, Caddington. b Red.

Chiltern Rangers.—a R. G. Payne, 587, Dunstable Road, Luton. b Red and white.

Dunstable Sea Cadets.—a A. P. Francis, 42, Priory Road, Dunstable. Phone Dunstable 874. b Blue and white.

Hayward-Tyler Juniors.—a A. Randall, c/o Hayward-Tyler Sports Club, Crawley Green Road, Luton. b Green shirts, white sleeves and collars.

Houghton Rangers Juniors.—a B. J. Sandford, Dixie Villa, Cumberland Street, Houghton Regis. b Royal blue and white.

Limbury.—a A. H. Eames, 8, Limbury Road Luton.

Limbury Old Boys.—a R. R. Knights, 44, Marsh Road, Luton. b "A" team: Green and white; "B" team: Red and white.

Luton Argyle.—a N. R. Robinson, 15, Wimborne Road, Luton. b Green and white hoops.

Langley Rangers.—a E. Kingscott, 44, St. Catharine's Avenue, Luton. b Red, with white sleeves.

1st Luton Boys' Brigade.—a R. Bone, 119, Park Street, Luton.

12th Luton Boys' Brigade.—a B. F. Palmer, 92, St. Augustine's Avenue, Luton. b Red.

Luton Co-op Y.C.—a L. F. G. Budds, 32, Alder Crescent, Luton.

Luton Boys' Club.—a B. S. Turner, 33, Pondwicks Road, Luton. Phone 2306. b Red and white.

Luton Sea Cadets.—a Lieut.-Commdr. G. H. Bone, R.N.V.R., 78, Kenilworth Road, Luton. b White.

Old Beechillians.—a H. Else, 102, Maple Road, Luton. b Black and amber.

Park Rangers.—a N. Tobin, 82, Boyle Street, Luton. b Blue.

Pioneer Boys' Club.—a A. Simpson, 55, High Street North, Dunstable. b "A" team: Black and blue; "B" team: Blue.

Moordale Athletic.—a J. Higgins, 13, Kenilworth Road, Luton. b Blue.

Round Green.—a G. W. Swain, 48, Abbotswood Road, Luton. b Red and white.

Sundon Y.C.—a R. A. Simpkins, 47, Harlington Road, Sundon. b Black and white.

St. Columba Y.C.—a R. J. Whitehead, 43, Meyrick Avenue, Luton. b Red and white.

Vauxhall Motors.—a D. E. Long, c/o Recreation Club, Vauxhall Motors, Luton. b Royal blue and gold.

Waterlow Road B.C.—a G. W. Hurling, 33, Loring Road, Dunstable. b Claret and blue.

Waterlow's Juniors.—a E. J. Bell, c/o Waterlow's, Dunstable. b Red and black.

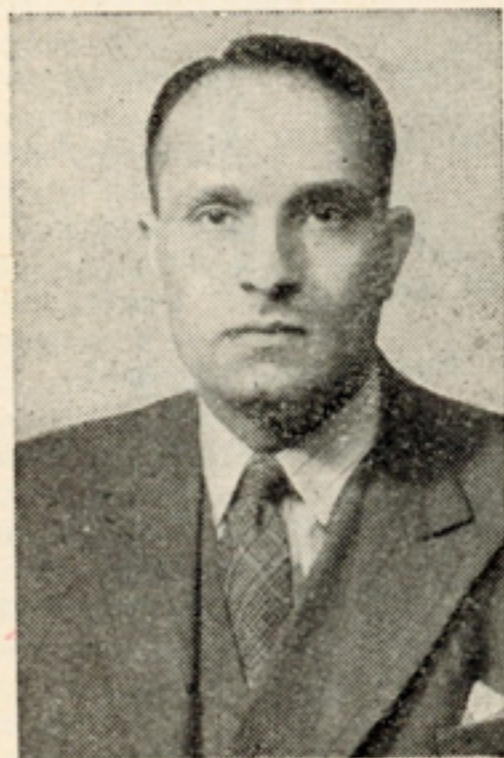
Westoning Juniors.—a B. W. Anderson, The Lawns, Church Road, Westoning. b Red.

West Park.—a H. J. Piper, 121, Cutenhoe Road, Luton. b "A" team: Old gold; "B" team: Green half.

LEIGHTON UNITED F.C. SPARTAN LEAGUE FIXTURES, 1949-50

1949		1950
Aug. 20—H. Hempstead	A	Jan. 21—Wembley A
" 24—Luton Amat	..H	" 28—MarlowH
" 27—Lyons ClubH	Feb. 4—WembleyH
" 31—Luton AmatA	" 11—YiewsleyH
Sept. 17—Baldock Town		" 19—PolytechnicA
(English Cup)	..A	" 25—R'mansworth T H
Oct. 1—PolytechnicH	Mar. 4—PinnerA
" 8—Amersham Tn	..H	" 11—Chelsea Mar ..H
" 15—R'mansworth T	A	" 18—YiewsleyA
" 22—H. Hempstead	..H	" 25—PinnerH
Nov. 12—Amersham Tn	..A	Apl. 1 Lyons ClubA
" 19—MarlowA	" 8—Chelsea Mar ..A
" 26 Berkhamsted T	H	
Dec. 3—Henley TnA	
" 17—Berkhamsted T	A	
" 31—Henley TnH	

EYE SUFFERERS CONSULT



Mr. S. M. ALY

*Indian Eye
Specialist*

**15 NAPIER ROAD,
LUTON
AND AT LONDON**

ESTABLISHED IN LUTON 1938

PHONE : LUTON 2281

SOUTH MIDLANDS LEAGUE

FINAL POSITIONS, 1948-49

Premier Division	P.	W.	D.	L.	F.	Goals		P.
						A.		
Cambridge Town	26	20	1	5	87	38		41
Bedford St. Cuthbert	26	16	3	7	64	45		35
Peartree Old Boys	26	15	4	7	78	53		34
Potton United	26	15	2	9	78	56		32
Arlesey Town	26	11	7	8	45	41		29
Marston Shelton	26	10	5	11	49	50		25
Wootton B.C.	26	11	3	12	53	61		25
Vauxhall Motors	26	10	4	12	66	71		24
Rushden Town	26	10	4	12	60	65		24
Wolverton Town	26	10	4	12	53	64		24
Luton Town Colts	26	9	5	12	60	73		23
Kempston Rovers	26	8	4	14	39	65		20
St. Neots and District	26	7	1	18	51	65		15
Stewartby	26	3	7	16	33	69		13
Division I								
Hitchin Road Old Boys	26	22	2	2	108	42		46
Stony Stratford	26	20	2	4	112	40		42
Bletchley T.	26	17	5	4	90	40		39
Baldock T.	26	16	3	7	97	55		35
Waterlow's	26	9	7	10	57	68		25
Queen's Works	26	8	8	10	64	62		24
St Neots St. M.	26	10	3	13	55	73		23
Letchworth T.	26	9	5	12	77	79		23
AC-Sphinx	26	10	3	13	54	61		23
Piggleswade T.	26	9	2	15	40	58		20
London Brick	26	9	1	16	44	76		19
Percival Ath.	26	8	2	16	66	105		18
Bedford Ave.	26	7	3	16	55	76		17
Luton O.B.	26	3	4	19	43	127		10
Division II								
Lynton Works	25	22	1	2	128	34		45
Davis Ath.	26	21	0	5	105	36		42
Bedford Cor.	26	19	3	4	105	36		41
Baldock T.	26	19	0	7	97	47		38
Vauxhall M.	26	15	2	9	95	54		32
Luton Am.	26	12	3	11	61	63		27
Leighton Utd.	24	12	2	10	72	60		26
Wootton B.C.	26	10	3	13	59	87		23
Electroflux	26	7	3	16	58	81		17
Skefko Ath.	25	7	2	16	50	80		16
AC-Sphinx	26	5	4	17	53	101		14
Stewartby	26	5	4	17	47	107		14
Queen's Works	26	5	4	17	43	112		14
Marston Shelton	26	6	1	19	48	120		13

For all

RADIO & TELEVISION REPAIRS & SERVICE

Consult

Scientific Radio Service Co.

(Prop.: D. C. WENK, A.I.I.A. Members of R.T.R.A.)



Repairs and Overhauls to all types of Television and Radio Receivers executed by experienced engineers under the personal supervision of the proprietor.

46 JOHN STREET, LUTON

Write, call or phone Luton 5014 for our Representative to advise you—without obligation—on all your Radio and Television problems. We shall be pleased to call after 6 p.m. if inconvenient to you during the day.



FOR AMATEURS! We have all components and Valves in stock. Technical Advice Gladly Given.

FOOTBALL CLUBS IN SOUTH BEDS.

a Secretary's name and address. b Ground.
c Club Colours.

AC-Sphinx.—a E. A. Stevens, AC-Sphinx Sports and Social Club, Dunstable. b Watling Street, Dunstable. c Red and white or blue and white shirts, white or navy knickers.

Adamant Athletic.—a F. Webb, Welfare Officer, Adamant Engineering Works, Dallow Road, Luton. Phone 2662. b Adamant Sports Ground, Chaul End. c Blue Shirts, white collars and cuffs, blue knickers.

Avondale Athletic.—a J. Sells, 69, Pembroke Avenue, Luton. b Public pitch. c Blue and white shirts, white knickers.

Bagshawe's.—a S. Haines, c/o Bagshawe and Co., Ltd., Dunstable.

Barton Rovers.—a S. R. Burr, 70, Manor Road, Barton. Phone Hexton 277. b Arnold Recreation Ground. c 1st team: White shirts; 2nd team: Red shirts with white collars and cuffs, black knickers.

Bell's Park.—a J. B. White, 33, Boyle Street, Luton. b Public pitch. c Amber and maroon quarters, black knickers.

Belle Vue Rangers.—a R. George, 55, Wordsworth Road, Luton.

Betta Sports.—a Football Secretary, Heather Works, Eaton Bray.

Bidwell.—a A. G. Coles, Keeper's Cottage, Bidwell, Dunstable. b Bidwell. c Yellow jerseys, black knickers.

Boys' Brigade Seniors.—a D. B. Ireson, 76, Beech Road, Luton. b Public pitch. c Royal blue shirts with white facings, black knickers.

British Legion (Leagrave).—a E. Tillyard, 15, Hurst Way, Leagrave. b Public pitch. c Blue and gold shirts, black knickers.

Caddington.—a W. Dugdale, 9, The Green, Caddington. b Chaul End Road, Caddington. c Blue and white shirts, black knickers.



COACHES

LET US QUOTE YOU FOR YOUR
FOOTBALL MATCH PARTIES

Quotations from

**202 HIGH STREET SOUTH
DUNSTABLE.** *Phone Dunstable 100*

or our Agents

**TRAVEL HOUSE LTD.
21 LEAGRAVE ROAD
LUTON.** *Phone Luton 2324*

TRAVEL BY 'BUNTY'

THE NAME ALONE ENSURES SATISFACTION

FOOTBALL CLUBS IN SOUTH BEDS.—*Continued*

Chalton Rovers.—a W. J. Williams, 1, Bank Cottages, Chalton. b Chalton. c Royal blue shirts, white sleeves and collars, blue knickers.

Chaul End.—a R. E. Harris, 127, Bradley Road, Luton. b Clarke's Meadow. c Amber shirts, black knickers.

Cockernhoe.—a H. Fleckney, 5, Luton Road, Cockernhoe, near Luton. b Near Church. c Black and amber quartered shirts, black knickers.

Craig Athletic.—a L. Doward, 38, Harefield Road, Luton. Phone 2037. b Public pitch. c Red shirts with white collars, white knickers.

Dagnall.—a A. Cutler, Cross Keys Farm, Dagnall. b Near Village Hall. c Blue shirts, white knickers.

Davis Ath'etic.—a D. S. Bailey, 88, St. Peter's Road, Luton. Phone 2260. b Chaul End Lane. c Green and white shirts, white knickers; and red and black shirts and white knickers.

Dunstable Met.—a R. M. Rudkin, 14, Loring Road, Dunstable. b At Met Station. c Blue jerseys, black knickers.

East Park.—a J. Brannan, 133, Wellington Street, Luton. b Public pitch. c Black and amber hooped jerseys, black knickers.

Electrolux.—a T. K. Hall, c/o Electrolux Works, Luton. Phone 4020. b Oakley Road. c Green and yellow shirts, black knickers.

Eaton Bray.—a F. Line, Nursery Cottage, Eaton Bray. b Eaton Bray Recreation Ground. c 1st team black and white hooped jerseys; 2nd team: Black and amber hooped jerseys.

E. Division, Bedfordshire Police.—a Inspector H. J. Whiffin, Police Station, Luton.

Farley Rangers.—a G. A. Daglish, 47, Conway Road, Luton. b Public pitch. c Red and white quartered shirts, black knickers.

Flitton and Greenfie'd.—a R. A. Sarrington, 25, Mill Lane, Greenfield. b Mill Lane. c Royal blue shirts with white collars and sleeves.

WINTER SESSIONS

☆ ☆

EVENINGS : 7—10 p.m.

☆

**SATURDAY
AFTERNOONS :**
2.30—4.30 p.m.

☆

**SKATES
FOR
HIRE**

RINK



THE
HALF MOON
RINK

**LONDON ROAD
DUNSTABLE**

Phone 277

☆

Café

☆ ☆

CAR PARK :: CYCLE SHED

FOOTBALL CLUBS IN SOUTH BEDS.—Continued

Foundry Equipment.—a P. E. Ryan, Foundry Equipment, Linslade. Leighton Buzzard. Phone L.B. 2206. b "Wayside." Grovebury Road, Leighton Buzzard. c White shirts, black knickers.

Glendale.—a A. Lightfoot, 35, Ferndale Road, Luton. b Public pitch. c 1st team: Red and white quarters; 2nd team: Blue and white quarters.

Harlington.—a F. G. Fleckney, 7, Wingate Road, Harlington. b Recreation Ground. c Claret and blue quarters, black knickers.

Hayward-Tyler.—a A. Randall, c/o Hayward-Tyler Sports Club, Luton. b Farley Hill. c Green and white shirts.

Hart Hill Rangers.—a A. J. Hayden, 187, Crawley Green Road, Luton. b Public pitch. c Blue shirts with red trimmings, white knickers.

Heath United.—a K. A. Rolls, 12, Linslade Road, Heath and Reach. b Handpost Field, Fox Corner. c Red shirts with white collars and sleeves, white knickers.

Hitchin Road O'd Boys.—a A. R. Brown, 1, Rideway Road, Luton. b Farley Hill. c 1st team: Red and white shirts; 2nd team: Blue and white shirts.

Hockliffe.—a R. Barker, 1, Watling Court, Dunstable. b Watling Street, Hockliffe. c White shirts, black knickers.

Horseshoe Ath.—a A. Gallagher, 22, Victoria Street, Luton. b Public pitch. c Green shirts with white collars and cuffs.

Houghton Rangers.—a B. J. Sandford, Dixie Cottage, Cumberland Street, Houghton Regis. b The Green and Poynters Farm, Houghton Regis. c Claret and sky blue shirts, white knickers.

Jacoll Sports.—a C. A. Crampton, c/o 30, Guildford Street, Luton. b Public pitch. c Claret and blue shirts.

Kent's Athletic.—a W. Meyrick, 463, Dunstable Road, Luton. Phone 2240, ext. 120. b Waller Avenue. c 1st team, green and yellow shirts; 2nd team, green and white shirts, black knickers.

GO BY BUS!



Route 212—Hourly Service between
LUTON, BARTON, SHILLINGTON
 and **HENLOW CAMP**
 also Gravenhurst, Campton,
 Meppershall and Stondon

Routes 205 & 206—between
LUTON, CODICOTE and WELWYN

Route 205 Daily via Peters Green and Kimpton
 Route 206 Sats. & Suns. via Bendish and Whitwell
 (Thurs. Luton, Bendish and Whitwell only)
 Connecting at Whitwell with
 Route 204 to St. Paul's Walden and Hitchin

ADDITIONAL SATURDAY AFTERNOON JOURNEYS

ON ALL ROUTES

Ask Conductor for Time Tables

Buses and Coaches for Private Hire
 Any Size Party Any Distance

Local Depot :
LONDON ROAD, HENLOW CAMP

'Phone : Henlow Camp 244

FOOTBALL CLUBS IN SOUTH BEDS.—Continued

Lea Valley.—a A. Bowker, 87, Claremont Road, Luton.
 b Public pitch. c black and white striped jerseys, black
 knickers.

Leighton Rangers.—a T. Cherry, 27, Lake Street,
 Leighton Buzzard. b "Wayside," Grovebury Road, Leigh-
 ton Buzzard. c Red shirts with white sleeves and collars,
 white knickers.

Leighton United.—a R. C. Hutchinson, 60, New Road,
 Linslade. b Bell Close. c Green jerseys, white knickers.

Limbury.—a A. Eames, 8, Limbury Road, Luton. b Public
 pitch. c black and amber shirts, black knickers.

Limbury Old Boys.—a R. R. Knights, 44, Marsh Road,
 Luton. b Public pitch. c Blue and white shirts, white
 knickers.

Linslade.—a G Radford, 17, Mentmore Road, Linslade.
 Leighton Buzzard.

Lilley Rangers.—a H. D. Saunders, 229, Park Street,
 Luton. b Putteridge Park. c White shirts, black knickers.

London Transport (Luton Depot).—a G. V. Allen, 20,
 Mayne Avenue, Luton. b Blundell Road. c Green jerseys,
 black knickers.

Luton Amateur.—a F. C. Smith, 14, Kingsway, Luton. b
 Gas Works Sports Ground, Dallow Road. c 1st team: Red
 and white striped shirts; 2nd team: Blue and gold quarters.

Luton Brewery.—a E. Elson, Brewery Recreation Club,
 Luton. b Farley Hill. c Green shirts, white knickers.

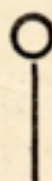
Luton Co-op.—a L. Budds, 32, Alder Crescent, Luton. b
 Public pitch. c Green and amber shirts, black knickers.

Luton Social.—a A. C. Haynes, 98, Cambridge Street,
 Luton. b Public pitch. c Amber and black shirts, white
 knickers.

Luton Crusaders.—a F. J. Miller, 15, Boyle Street, Luton.
 b Public pitch. c Blue and white shirts.

Luton United.—a R. A. Tomkins, 69, Wardown Crescent,
 Luton. Phone 374. b Public pitch. c White shirts with
 black facings, black knickers.

Members of the National Sporting League



W. H. LANCASTER & SONS

56 Cambridge Street • Luton

Commission Agents

Established 1907

HORSE RACING

GREYHOUND
RACING

FOOTBALL

Telephone:

2340

6 lines

Telegrams:

"Require" Luton, Beds.

COURTESY

PRIVACY

PROMPT
PAYMENT

Credit Accounts Opened on Approved Reference

FOOTBALL CLUBS IN SOUTH BEDS.—Continued

Luton Postals.—a J. W. Keene, 21, William Street, Luton.

Luton Wednesday.—a J. W. Ambridge, 65, Cromwell Road, Luton.

Napier Sports.—a B. S. Holdstock, c/o Napier Sports and Social Club, 19a, Park Square, Luton. **b** Public pitch. **c** 1st team: White shirts, black knickers; 2nd team: Blue shirts with white collars and cuffs, black knickers.

Norton Rangers.—a E. Heathfield, 125, Cowper Street, Luton. **b** Public pitch. **c** Black and red hooped jerseys, black knickers.

Old Lutonians.—a P. Longbottom, 91, Elmwood Crescent, Luton. **b** Public pitch. **c** Maroon and yellow shirts, black knickers.

Percival Athletic.—a L. G. Kenrick, c/o Percival Aircraft Ltd., Luton. Phone 2960, ext. 22. **b** Eaton Green Road. **c** White shirts, blue knickers; change colours, red shirts.

Pioneer Corinthians.—a G. Wilkins, 4, Park Street, Dunstable. **b** Bennett's Recreation Ground. **c** Maroon shirts, white knickers.

R.A.F. Association.—a J. B. Wesley, 90, Argyll Avenue, Luton. **b** Public pitch. **c** Maroon and blue shirts, white knickers.

R.A.F., Leighton Buzzard.—a W.O. W. P. B. Baker, 23 Group H.Q. (U), Leighton Buzzard. **b** Bell Close. **c** Red jerseys, blue knickers.

Rootes Sports.—a J Hoar, c/o Commer Cars Ltd., Luton. Phone 2360. **b** Farley Hill. **c** Emerald green and white jerseys, white knickers.

Royal Naval Old Comrades' Association.—a D Bell, 31, St. Mary's Road, Luton. **b** Public pitch. **c** Blue jerseys, white knickers.

Royal Marines.—a F. Weston, 3, Nursery Cottages, Old Bedford Road, Luton. **b** Public pitch. **c** Yellow shirts, black knickers.

Shillington.—a S. J. Tingey and R. M. Head, 39, High Road, Shillington. **b** Parsonage Lane, High Road, Shillington. **c** 1st team, white shirts; 2nd team, black and white shirts, black knickers.

BUTE MILK BAR

for

**BREAKFASTS, DINNERS,
TEAS AND SUPPERS**

SNACKS, SANDWICHES
AND CAKES

Always Available

COFFEE A SPECIALITY



*Why Not Visit Us
After The Match?*



BUTE STREET, LUTON

Phone : 622

Ground floor open 8 a.m. until 9 45 p.m.

First floor open 9.45 a.m. until 6 p.m.

FOOTBALL CLUBS IN SOUTH BEDS.—Continued

Silsoe.—a L. West, 27, Church Road, Silsoe. b Wrest Park. c Claret and sky blue shirts, black knickers.

Skefko Athletic.—a F. King, c/o Skefko Works, Luton. Phone 1100. b Sundon Road. c Green and white shirts, white knickers.

Spandit Sports.—a P. D. Beeson, c/o Empire Rubber Co., Dunstable. b Bennett's Recreation Ground. c Green and red shirts, white knickers.

Streatley Sports.—a B. Currington, 231, Sharpenhoe Road, Streatley. b Church Road, Streatley. c Red shirts with white sleeves and white knickers.

St. Peter's Rover Crew.—a D. Ash, 95, Cranleigh Gardens, Luton. b Public pitch. c Maroon shirts, white knickers.

Sundon St. Mary's.—a G. Billington, 27, Streatley Road, Sundon. b Sundon Village. c Black and amber shirts, white knickers.

Toddington Rovers.—a F. W. Bryant, 63, High Street, Toddington. b Recreation Ground. c Red Shirts, white collars and sleeves, white knickers.

Totternhoe.—a W. Lindgren, 70, Castle Hill Road, Totternhoe. b Recreation Ground. c Red and white.

Vauxha'l Motors.—a K. Edge, c/o Vauxhall Motors Recreation Club, Luton. Phone 2600. b Kimpton Road, Luton. c Royal blue and gold jerseys, black knickers.

Villa Rovers.—a C. Turpin, 19, Clifton Road, Luton. b Public pitch. c Maroon shirts, black knickers.

Walcot Athletic.—a H. G. Preece, 44, Bloomfield Avenue Luton. b Public pitch. c Red shirts, white knickers.

Waterlow's.—a E. J. Bell, Waterlow's and Sons, Ltd., Dunstable. b High Street North, Dunstable. c Red and black shirts, black knickers.

Warden Hill.—a J. Carr, 204, Barton Road, Streatley.

West Park O.B.—a P. Wesley, 12, Maidenhall Road, Luton. b Public pitch. c Old gold shirts, black knickers.

Westoning.—a N. Gazeley, Westoning Road, Harlington. b Westoning Recreation Ground.



*The Sign of
Good Service*

Luton Motor Co., Ltd.

Main Ford and Fordson Dealers
326 Dunstable Rd., Luton

Phone: 3713 and 3714

Luton Motor Co., (Dunstable) Ltd.

High St. South, Dunstable

Phone: 759



Change your luck by changing to

SHERMANS

**ONE LESS MATCH TO
FORECAST EACH TIME
and WORLD RECORD
DIVIDENDS LIKE THESE**

WORLD'S LARGEST 7 MATCH TREBLE CHANCE POOL

£45,286^{1/16}
TO 1/4
PAID 27th NOV. 1948

WORLD'S LARGEST 13 MATCH 1st POINTS POOL

£30,084^{1/16}
TO 1st
PAID 3rd JAN. 1949



Send 2/- for 48
weeks supply
of coupons

WORLD'S LARGEST 12 MATCH 1st RESULTS POOL

£10,136^{1/13/8}
TO 1st
PAID 26th MAR. 1949

SHERMANS POOLS LTD. • CARDIFF

1880

FARMERS

were

*Famous for
Quality and Reliability
in Music*

1949

FARMERS

still

*Famous for
Quality and Reliability
in Music*

Opposite Town Hall - Luton