

1952 The Luton News 1953

Football



Handbook



On all grounds . . .



*Player's
Please*

PLAYER'S NAVY CUT CIGARETTES AND TOBACCO
[NCC 756D]

The "Luton News"

FOOTBALL HANDBOOK

Season 1952-53

WILL PROMOTION ISSUE BE WIDE OPEN AGAIN?

LAST season will go down as one of the most remarkable the Second Division has ever experienced because of the open character not only of the promotion race, but of the struggle to avoid relegation.

As many as eight or nine different teams were tipped as likely to win places in the First Division at one time or another, but eventually, it was Sheffield Wednesday who steam-rolled their way back after only one season's absence from the top grade, due largely to the block-busting tactics of their red-headed centre-forward, Derek Dooley.



Derek Dooley

From the moment he emerged from the comparative obscurity of the Wednesday's Central League team early in the season, Dooley struck terror into the hearts of opposing defences by his single-mindedness in making tracks for goal and by the fierceness and accuracy of his shooting.

SHEER OPPORTUNISM

Not only did he break a long-standing Wednesday scoring record, but he put himself in line for International consideration by his sheer opportunism alone.

Much of Dooley's success could be traced to the scheming of Jackie Sewell, that class inside-forward who, apart from laying on openings for Dooley, still found time to score exactly half as many goals as the centre-forward obtained.

Cardiff City, who showed real consistency over two seasons—in 1950-51 they were third with 50 points—snatched second place from the grasp of Birmingham City by winning their last match of the season.

Although his influence was not quite so marked as that of Dooley, the City owed quite a lot to their centre-forward, Cyril Grant, who went to Ninian Park from Southampton as a winger, but who was converted into one of the most successful leaders in the Second Division.

He banged in two goals in the final match, but in Cardiff's case there was much emphasis on the soundness of their defence, which conceded 14 goals fewer than the champions.

On the other hand, the Wednesday's limitations in this department was fully compensated by their striking power in attack, which

obtained exactly 100 goals.

CAN TOWN JOIN FIGHT?

What Luton will be mostly interested in this season is whether the Second Division will again be so evenly contested, and whether they themselves will be able to get into the promotion fight again.

With their best post-war season behind them, they have something solid on which to build their hopes, for they finished only seven points behind Cardiff and were on the fringe of the fight for a long time.

A little more tightening up in defence and a little more finishing power in the attack and the Town might have made the grade, as could several other clubs had they been able to strike consistent form in the last weeks of the season.

At Kenilworth Road, the Town will begin the season with few fundamental changes so far as their playing staff is concerned. Jack Taylor has gone to Wolves, to be replaced by the England inside-forward, Jesse Pye, from whom the Town are hoping for big things.

PYE HAS BIG REPUTATION

Pye comes with the reputation as a scorer of goals, and if he is successful in this direction, as was Taylor last season, then the club will be well satisfied with their bargain.

Another familiar figure who will be missing from the line-up will be that of George Stobbart, who has gone to Millwall.

Otherwise, the set-up remains largely the same, and with several youngsters coming along and profiting by their experience of last season, there is likely to be keen competition for some positions.

A club's strength lies in its reserves, and those who were "blooded" in League football at the tail-end of last season did sufficient to suggest that they will be serious contenders for places this campaign.

The vastly improved position they attained in the League apart, the memorable thing about last season, of course, was the successful run in the F.A. Cup and the equalling of the club record by reaching the last eight.

Not for a long time will the memory of those three tremendous battles with Brentford be forgotten, nor the drama of the great winning goal scored by Bob Morton during extra time on the famous Highbury ground.

INJURIES BEAT THE TOWN

Nor will the fans easily forget the bad luck the Town experienced in their sixth round meeting with Arsenal, who, although they won through by 3—2, never held the lead until



Cyril Grant

the closing phase of the game and until the Town had been reduced by injuries to 9½ fit men.

At one stage the Town looked booked for a semi-finals place, and might very well have reserved it but for the injury bogey stepping in.

Altogether it was an exciting, thrilling season, marked by better support which, together with some judicious selling, brought about a tremendous improvement in the club's financial position.

With the same spirit and the same skill as was shown last season, there is no reason why similar or even more success should not be attained, and judging by the before-the-season sale of season tickets, interest at the start of the new season is sky-high.

Facing the team is a none too easy beginning to the season, but with a favourable run of the ball and reasonable luck, they could get away to flying start.

CHILTERN.

* Picture on front cover is that of Bernard Moore scoring the first goal against Arsenal in the Cup-tie at Kenilworth Rd.

FOOTBALL TEAM PHOTOGRAPHS

Make your appointment now for the very best in photographic technique. Our operator will attend anywhere at any time to photograph your team.

Prices are reasonable :: Quality consistent

Wm. HAROLD COX

29 Wellington Street, Luton Phone Luton 151

Luton Town Football and Athletic Club Ltd.

THE BOARD OF DIRECTORS



Mr. P. G. Mitchell
(Vice-Chairman)



Mr. A. F. England



Mr. H. S. Hewson



The President and Chairman:
Mr. Charles Jeyes, C.A.



Mr. H. Richardson



Mr. E. Hugh Woods



Mr. P. W. Wright

Club Colours:

Shirts, white; knickers, black; stockings, black and white.

Ground:

Kenilworth Road, Luton.

Registered Office:

70 and 72, Kenilworth Road, Luton.

Hon. Medical Officer:

Dr. E. J. Crarer,
M.B., Ch.B.

*A Sure
"Home and Away"
Winner*

3^D

**EXLNT
CRISPS**

Selected Potatoes. Finest Edible Oil
and Salt. Obtainable from
Licensed Houses, Clubs, Grocers, etc.

PAYFORD FOOD PRODUCTS LTD
JASMINE PARADE, LEAGRAVE ROAD,
Phone - 1643 LUTON Phone - 1643

DALLY DUNCAN (Team-manager). Has his most successful season with the Town behind him and is hoping to guide the club to even better things in the one which is about to open. One of the best-known figures in the game, Dally is beginning his sixth term in management, for he was made player-manager in 1947 and became team-manager at the end of the 1947-48 season. It was in 1946 that he came to Luton from Derby County as player-coach under George Martin, whom he replaced on his departure to Newcastle United. Has gained most of the honours which football has to offer, including many Scottish caps and a Cup-winner's medal whilst with Derby County. Rated as one of the best wingers ever, he became professional at 18 with Hull City and has spent his whole life in football.



PHIL COLEY (Secretary). Probably had the most hectic few weeks of his life during the Town's Cup run of last season, and there were times when he was nearly snowed under with the applications that came in for Cup-tie tickets. At such a time, his job is an unenviable one but Phil would rather have it that way, for it means that the club is doing well when the postman keeps him busy. Took over the secretaryship from Archie Wickson six years ago and got into the ways of a by-no-means-easy job remarkably quickly. Is one of the Town's keenest supporters, though he does not always get time to see a match right through. Came to Luton from the North-East and is one of several from that area connected with the club.

The George Hotel LUTON

[Telephone : 654]

LUTON'S PREMIER HOTEL

A.A. * * * & R.A.C.

50 Bedrooms :: Hot and Cold Running Water

[Central Heating in all rooms]

Garage Accommodation for 100 Cars

Excellent accommodation available for
LUNCHEONS : DINNERS : DANCES
WEDDING RECEPTIONS : SHERRY &
COCKTAIL PARTIES

Business Meetings, etc. at reasonable terms

Proprietary Brands of Whisky, Gin, Brandy
always in stock

Worthington Draught Ales in all Bars

Large Selection of Bottled Ales including
Double Diamond, Ben Truman, Ind Coope,
Mann & Crossman, Whitbread, Youngers
and J. W. Green's

TIM KELLY (Assistant team manager and coach). After a season as the club's part-time coach, he will now devote the whole of his time to this new combined post. His work last season certainly produced results and the Town have a high opinion of his coaching ability. Is very well known in local football circles, for he played for Vauxhall Motors after his career as a professional with Fulham ended. Prior to that he gained Irish amateur caps and he was a clever inside-forward of the scheming type. Has been a Football Association coach for a number of years, and his experience is of great value to the Town's younger players.



RALPH HANN (Trainer). Another member of the North-Eastern contingent, he came to Luton soon after Dally Duncan was appointed manager to take over from Arthur Pembleton, who retired. Newcastle United was his first professional club and then followed a move to Derby County, with whom he spent 14 years as a player. Was a splendid, hard-working wing-half, and he played behind Dally in the Derby team for a number of seasons. His playing days over, he joined Crystal Palace as a trainer and moved to Luton after one season at Selhurst Park. Has made a study of the treatment of injuries, in which he is most skilled. A useful all-round cricketer, he plays for Luton Corinthians.

IT COSTS NO MORE TO HAVE THE BEST

26 TO 39

LATEST LUXURY SEATER

COACHES

for

Football Matches : Ice Hockey

: Theatres and All Occasions :

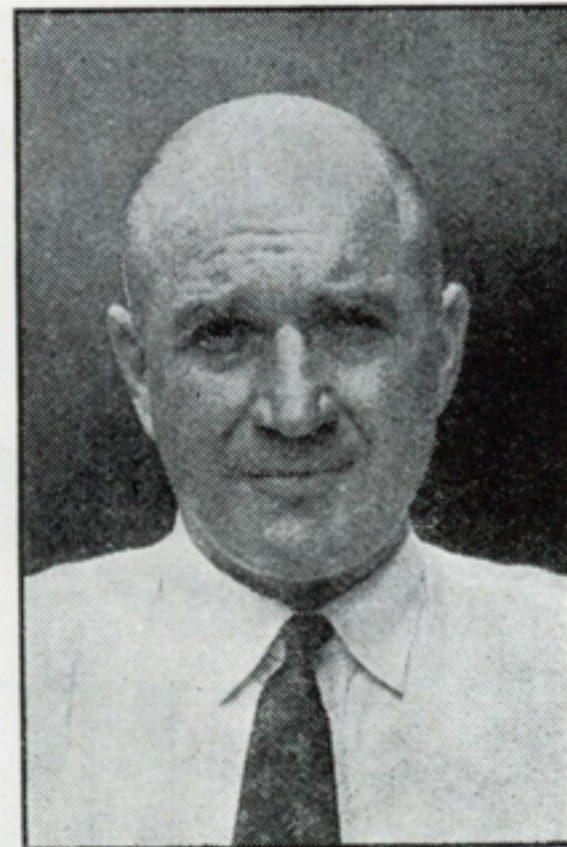
"Specialists in Coach Travel"

SEAMARKS BROS., LTD.

43a Bury Park Road, Luton Luton 731

High Road, Westoning Flitwick 314

TOM MACKEY (Trainer). This is his twentieth season with the club, who are hoping to arrange a benefit match for him shortly. Permission was given for this to be done in the closing stages of last season, but the difficulty of securing the release of players at that juncture caused the match to be postponed. Deserves a bumper benefit, for he has been one of the Town's most loyal servants. Arrived at Kenilworth-road in 1932 from Sheffield Wednesday as a centre-half and was converted into a staunch full-back. Was a member of the Town's promotion team and was appointed to the training staff in 1938. Born at Cassop, Tom began his professional career with Hartlepoons United.



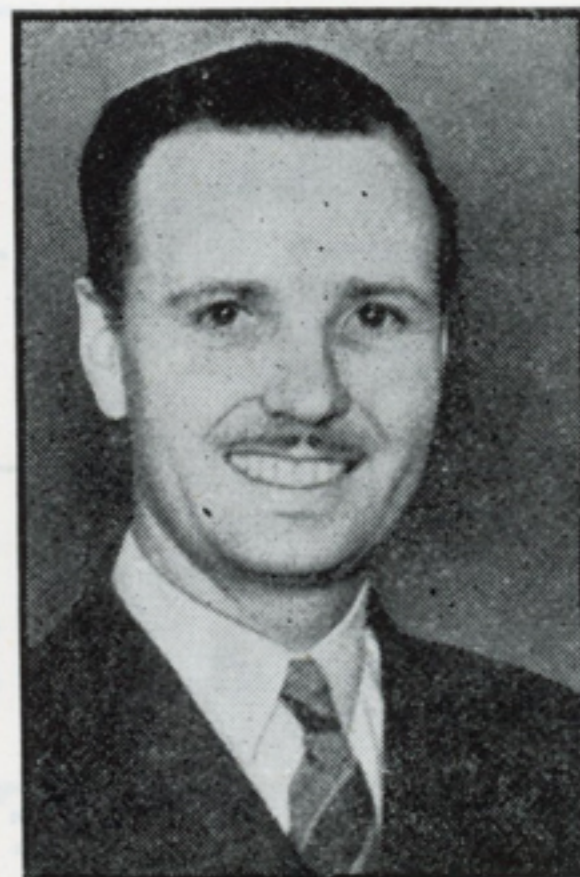
JOHN SANDERSON (Groundsman). Made the best of a bad job when a severe knee injury made it impossible for him to continue as a player and took over the onerous job of groundsman. Keeping the Kenilworth-road pitch in trim is an all-through-the-year job and John does it with a remarkable measure of success. Was one of the Town's earliest signings when normal football was resumed after the war and they paid a big fee to Wolves for his transfer. A most accomplished full-back, he was unlucky enough to meet with an injury soon after he joined the Town and, although he played for some time under a severe handicap, eventually, on medical advice, he was forced to give up active participation in the game.

Telegrams: Benskin's, Watford

Say BENSKINS for BEER

Telephones: Watford 4414-5

BOB READHEAD (In charge of "A" team). Has had a connection with the Town club that goes back for 22 years and, at one time, was hon. secretary of Luton Sundale, the club that produced Horace Gager and George Good-year, among others. In 1938, Bob was appointed assistant to George Martin, who was then in charge of the Town's "A" team in the United Counties League. Served in the Army from 1940 to 1946 and then assisted Hubert Day in looking after the "A" team. When Hubert was appointed chief scout, Bob took over the "A" team and has had a great deal to do with its successful running. Was elected a member of the Metropolitan League Management Committee in June, 1950. Born and educated in Luton.



BERNARD STRETEN (goal-keeper). Holds the distinction of being the only post-war Luton player to have gone through two seasons without missing a first team match. He was an ever-present last season in 42 League matches and six Cup games and has put up an impressive run of 71 consecutive first team appearances. One of the quickest and most spectacular goalkeepers in the game, Streten gained English International honours, both as an amateur and a professional. Signed professional forms for the Town as soon as he was demobilised from the R.A.F. in which he was a regular, and received a £750 benefit last season. First attracted notice when playing as an amateur for Shrewsbury Town from whom he joined Luton.

PLOWMANS LIMITED

~~~~~

## **VAUXHALL BEDFORD**

### **Sales & Service**

~~~~~

HITCHIN ROAD LUTON

'Phone : 2226

RON BAYNHAM (goalkeeper). Has yet to receive a "blooding" in a League match, but kept goal for the Town in all their three Irish tour games and acquitted himself extremely well. In fact, on that form, he is likely to be a serious rival to Streten this season. Was secured from Worcester City midway through last season as an experienced replacement for Iorwerth Hughes, and his fine displays had much to do with the noticeable improvement in the record of the Reserves after his arrival. Hails from Birmingham, and the Town sent one of their former goalkeepers, Tom Gibbon, to run the rule over him whilst he was with Worcester. Is tall and particularly good at cutting out high centres.



DEREK WILLIAMS (goalkeeper). Although he is starting his third full season with the club, Luton fans have seen little of this young Welshman because R.A.F. service has interrupted his professional career. Last season, his appearances were severely restricted for this reason, though he had a few outings in the Reserve team and in the third string. Now demobilised, he should benefit from full-time training and coaching and, if he fulfils his early promise, the Town should not have much anxiety about the goalkeeping position, even should injuries crop up. Was an amateur with Llandudno, from which club Hughes was signed, and playing for the Welsh Youth XI when the Town spotted him and persuaded him to sign professional forms.

DAILY DELIVERIES IN ALL DISTRICTS

RANDALL & WHITING LTD.

Wholesale and Retail

MILK DISTRIBUTORS

PASTEURIZED, T.T. and STERILIZED



Head Office :

125 NORTH ST., LUTON

TELEPHONE 2991/2

Dairy :

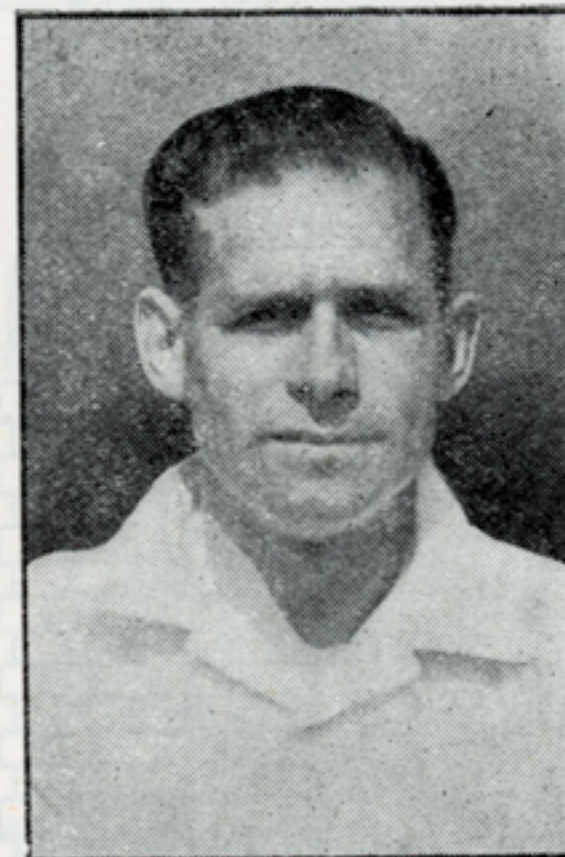
HAVELOCK ROAD, LUTON

And at :

98/100 LUTON RD., DUNSTABLE

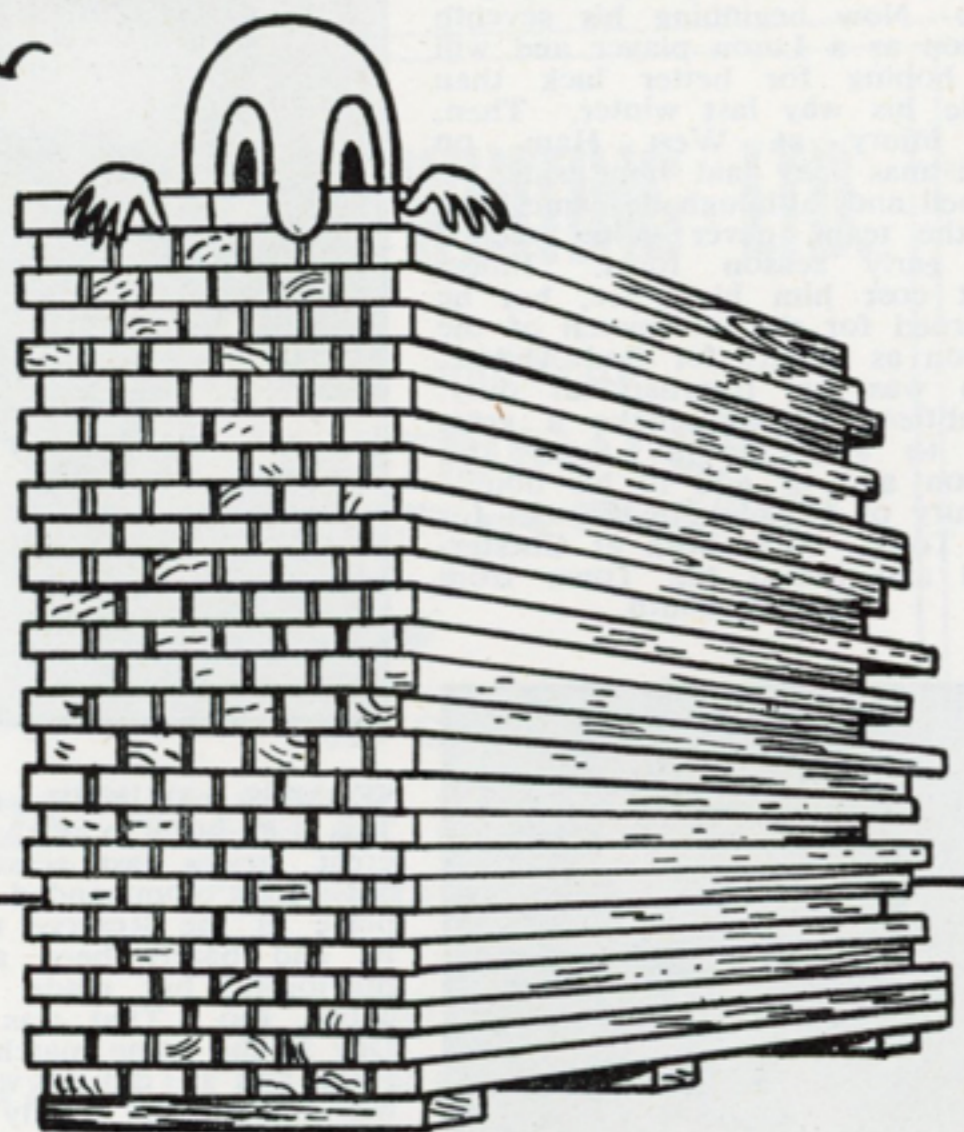
YOGHOURT A SPECIALITY

BILLY COOKE (right - back). Longest-serving full-time player on the Town's books and one of the best club-men the Town have ever had. Now beginning his seventh season as a Luton player and will be hoping for better luck than came his way last winter. Then, an injury at West Ham on Christmas Day laid him aside for a spell and, although he came back to the team, never quite reached his early season form. Illness next cost him his place, but he returned for the last match of the season as deputy for Bud Aherne, who was on International duty. Doubtless, he will make a great bid to stay in the team this season and to add to his double century of League appearances for the Town. Was born at Chesterfield and joined the Town from Bournemouth.



SEAMUS DUNNE (right-back). This Eire-born player made such great strides last season that he not only commanded a regular place in the Reserve team which he had barely been able to do previously, but made his League debut, too. That was on Boxing Day in the home match with West Ham and he did so well that he was retained as deputy for Cooke and played very strongly against dangerous winger, Chris Duffy, in the Cup-tie with Charlton. In fact, during his run of 14 first-team games, he gave considerable satisfaction and promise for the future. That experience should stand him in good stead this season and, if he strikes top form, might well join Bud Aherne in the Eire team. Earned Eire Youth XI caps and afterwards played for Drogheda United and Shelbourne.

WOT NO TIMBER?

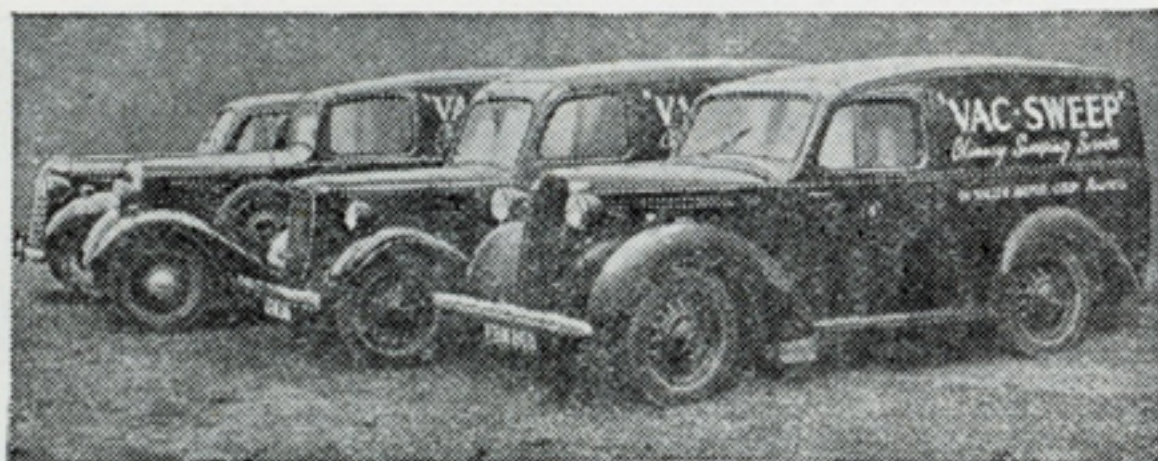


TRY LILLYWHITE'S
LEAGRAVE RD.
LUTON.
PHONE 2812-3

LESLIE JONES (right-back). Experienced judges have noted this tall, well-built, supremely confident young player as one of the best prospects on the Town's books. Last season, as was the case in 1950-51, he was brought into the team for the closing matches to give him experience, and he showed up like an old hand. Has all the fundamentals of a top-class full-back, for he shows a good positional sense and is a fine kicker of a ball with either foot. His one fault is that he is inclined to be a little too cool, which is apt to give the impression of casualness. A We'shman, he has spent a long time in Luton and played his junior football here.



BUD AHERNE (left-back). Few Second Division players have had so much International experience as this polished full-back, who has held a regular place in Eire's team ever since he joined the Town three years last March. The latest honours that came his way were to play for Eire against Germany, Austria and Spain after the close of the season. Collection of a Cap caused Bud to lose his 100 per cent record of appearances for the Town last season, for he was missing from the line-up only in the home game with Barnsley. The most consistent of players, he rarely has a bad game and his keen positional sense has enabled him to hold many top-class wingers. Whilst with Belfast Celtic, to whom the Town paid £8,000 for his transfer, Aherne played for Eire, Ireland and the Irish League.



The Leading
VACUUM
CHIMNEY SWEEPS

in the district

ESTABLISHED 1945

The only firm operating
 its own patented process

“VAC-SWEEP”
88, WALLER AVENUE, LUTON

Telephone : 1133

JIM PEMBERTON (left - back). Has not had the best of luck where injuries are concerned, for he has had two cartilage operations on the same knee. Second was during the closing weeks of the season, but he has made a complete recovery. One of those useful players who willingly fits in wherever required. Pemberton has been “around” since he joined the Town from Stourbridge five years last November. His longest spell in the first team was at outside-left, but he has also played at left-half, inside-left, and left-back. In the Reserves, his experience has been even more varied, for he has filled the centre-half berth and scored a “hat-trick” from centre-forward.



ALAN THOMPSON (left-back). The displays this youngster gave for the Reserves at the latter end of last season caused Dally Duncan to consider giving him an outing in the senior side in the last match of the season. That his development has reached such a stage suggests that he has a good season before him, and his positional sense and sureness in the tackle make him a definite hope for the future. Finished his Army service during last season and is now a full-time player. A local, he was a member of the successful West Park (Youth League) team some three or four years ago and the Town have had him on their books as amateur and professional for quite a time now.

CAMDEN MOTORS LTD.

LAKE ST., LEIGHTON BUZZARD

Telephone : 2041 (5 lines)

for



The Largest Selection in the Country
Nearly 500 Cars in Stock

**ROAD TESTS GIVEN WITHOUT
OBLIGATION AT OUR PREMISES**

Three months' written guarantee given with all cars over
£150. Exchanges, Part Exchanges, Hire Purchase arranged.

Write for 18 page List

CARS BOUGHT FOR SPOT CASH

Open 9 a.m.—8 p.m. Mon.—Sat. Closed Sunday

Situated 1 minute from Bus Terminus and L.M.S. Railway Station.

KEN HAWKES (left-back). A product of the prolific North-East Coast nursery which has supplied the Town with a large number of players in the past. Hawkes was only 18 when he signed professional forms for the Town in October last year and, a few months afterwards, began his Army service, which means that his appearances for the club may be somewhat irregular this season. Was sent down on trial by the Town's north-eastern scout and so well did he shape in an "A" team match on a Wednesday that he was put straight into the Reserve side on the following Saturday. His display in that match induced the Town to offer him terms. Previous club of this youngster was Shotton Colliery Welfare.



BILL CLARK (right-back). Newcomer to the professional ranks, for this 17-years-old became a paid player a week or so after last season ended. By then, the Town had a very good idea of his ability and potentialities, for he played several games in the "A" team as an amateur. Tall, well built, he was spotted by Town scouts when playing for Huntingdon and was quickly signed on amateur forms. Had a big reputation in his own area and gained County Youth honours on a number of occasions. Will combine football with the business of learning a trade in Luton.



Calm down

Have a CAPSTAN

*- they're
made to
make friends*



W. D. & H. O. Wills, Branch of The Imperial Tobacco Co. (of Great Britain & Ireland), Ltd.

CC803

BOB MORTON (right-half). Were a popular vote to be taken, Morton would probably top the poll as the most improved player of last season. It did not open any too promisingly for him, for he was appearing at inside forward in the Reserves and he did not get the vacancy left by the injury to Wally Shanks until two other players had been tried there. When his chance did come he took it so well that there was never any question of leaving him out. Playing with great confidence, he was strong in defence and accurate in attack and his greatest moment came when he scored the winning goal in the second Cup replay with Brentford. Took over brilliantly at centre-half while Owen was off injured. Hails from Eaton Bray and played for them, Hitchin Town and Waterlow's before the Town signed him.

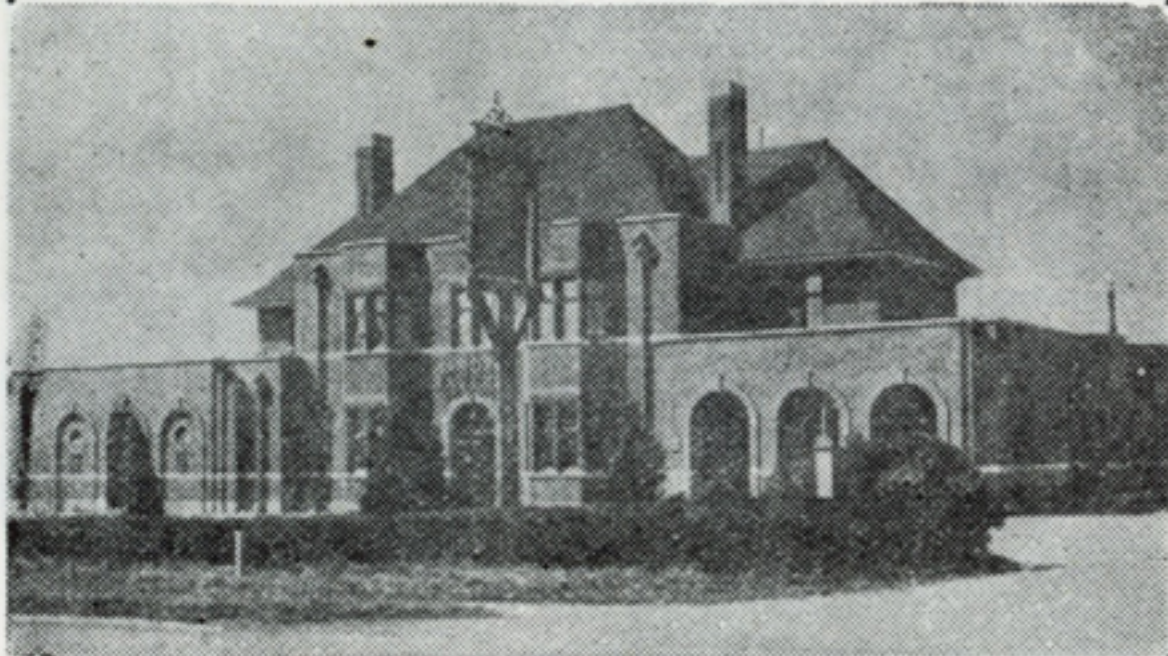


TERRY KELLY (right-half). Big things will be expected from this 20-years-old, who had his early senior experience with Vauxhall Motors. In those days he was a centre-half of high promise and it was for this position that the Town signed him more than two years ago. Call-up to the R.A.F., from which he has now been released, left him little opportunity for training, but he came on apace last season when he gained a regular place in the Reserves as a right-half, a position in which he will probably be allowed to develop. He has now signed for the Town on a full-time basis.

THE WARDEN TAVERN

PHONE: ICKNIELD 277

2½ miles out on the New Bedford Road



LUNCHEONS WEDDING RECEPTIONS

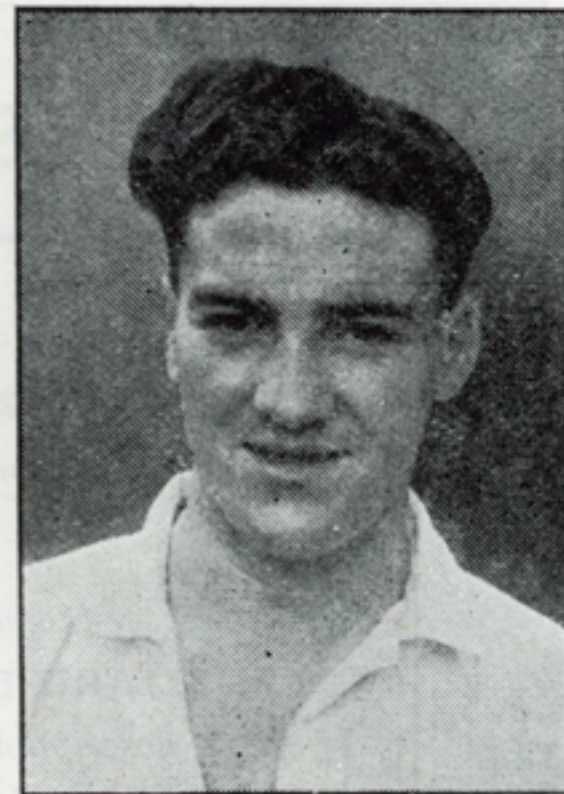
SOCIAL FUNCTIONS & EVENING PARTIES
(Winter months only)

J. W. GREEN'S PRIZE ALES & STOUTS

Fully Licensed :: Large Car Park

PROPRIETOR: TOM HODGSON, Ex-Captain Luton Town F.C.

WALTER MILLER (right-half). Consistently good reports from their North-Eastern scout caused the Town to send a representative to have a look at this young half-back, who was then playing for Spennymoor in the North-Eastern League. Result was that the Town made an offer of over £2,000 for the transfers of both Miller and Scott. Although he is only 20, Miller had a season with Hartlepool United before going into the R.A.F., in which he has still several months to serve. At least two other League clubs were showing considerable interest in Miller's future before the Town stepped in to clinch the deal.



SID OWEN (centre-half). Rated as among the best centre-halves in the country, Owen was chosen for the F.A.'s Australian tour 12 months ago and was also honoured by playing for the England "B" team against the Olympic Games side last season and by being invited to captain an F.A. XI on two occasions. But for injury, it is probable that he would have joined Taylor and Mitchell in the "B" team against Holland. Town fans will always believe that it was the injury to Owen in a tackle with Arsenal centre-forward, Goring, that cost the Town a place in last season's Cup semi-finals. Before that happened, he had been playing brilliantly and had closed up the middle of the field completely. Has just completed five years with the Town and received a £750 benefit cheque. Luton secured him at a bargain price from Birmingham, but not as a centre-half — left-half was his position then.

HUMPHREY & SCOTT LTD.

Luton 5757/8/9

Manufacturers of:

CARDBOARD BOXES and **CARTONS**
of every description, including Printed Folding
CARTONS and Collapsible Containers for
the Textile Trade

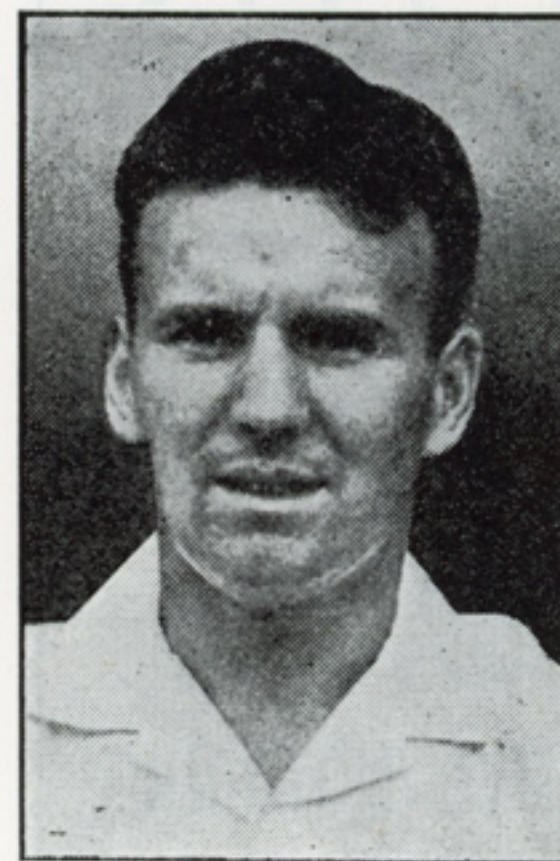
Specialists in Pre-Packaging

A.I.D. APPROVED



**58, BUTE STREET,
LUTON**

LESLIE HALL (centre-half). Although he has never been a full-time professional, this former St Albans amateur has been with the Town since the early years of the war. The consistent play of Owen has served to keep Hall much in the background during recent seasons, but he had his share of Cup glory last season when he came in at short notice to deputise at centre-half in the Highbury Cup replay. His showing in that match was on a par with anything he has done for the club. Not that that was surprising, for whenever he has been called upon, Hall has filled the bill admirably. There was a time when he commanded a regular first team place—between the Gager-Owen era—but now his service is mostly with the Reserves, who find his wide experience valuable.



CHARLIE WATKINS (left-half). Like Aherne, Watkins missed only one first team match last season and he was one of the most disappointed players on the books when he failed to pass a test for that particular game. Completes four years with the Town in September, and he was signed for quite a modest fee from Glasgow Rangers on the recommendation of Billy Arnison, then the Town's centre-forward. Began last season at right-half, but switched over to the other flank following the injury to Shanks. The change did not worry him, for he had one of his best seasons for the club. Has played at inside-forward on occasion, but this was not necessary last campaign. A qualified physiotherapist, he has a practice in the town and is also coach to Hitchin Town F.C.

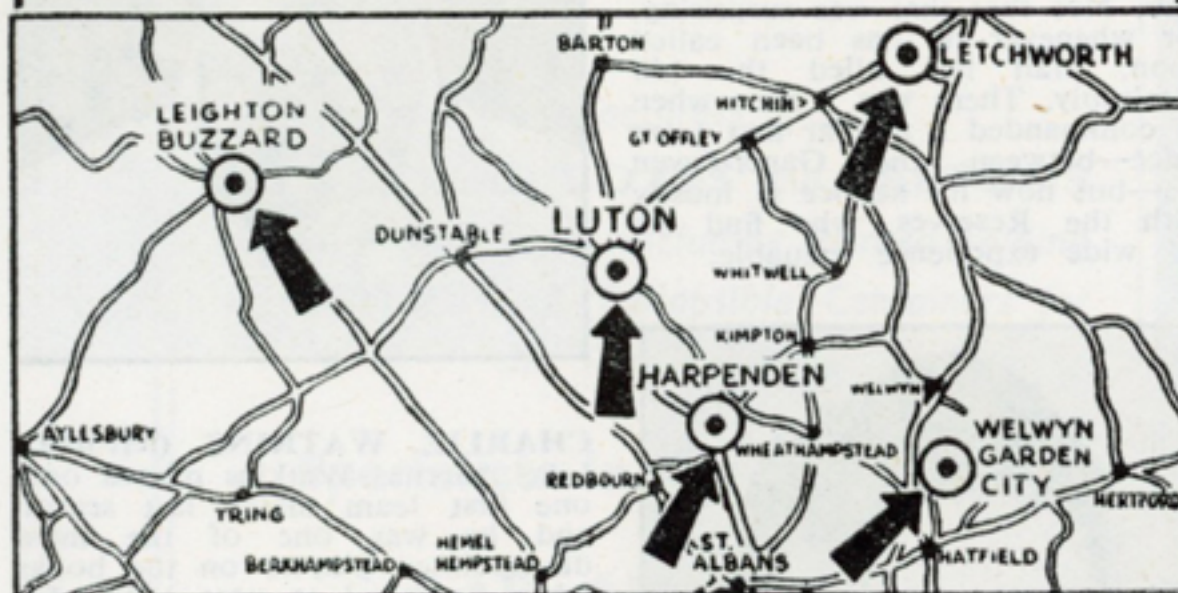
DICKINSON and ADAMS

(LUTON) LTD.

AUTOMOBILE ENGINEERS

BRIDGE ST., LUTON. Phone 3535

OFFER YOU SERVICE AT



Our Agencies include

MORRIS COMMERCIAL

AUSTIN

DAIMLER

LANCHESTER

WOLSELEY

MORRIS

CYCLEMASTER

MORRISON ELECTRIC

RILEY

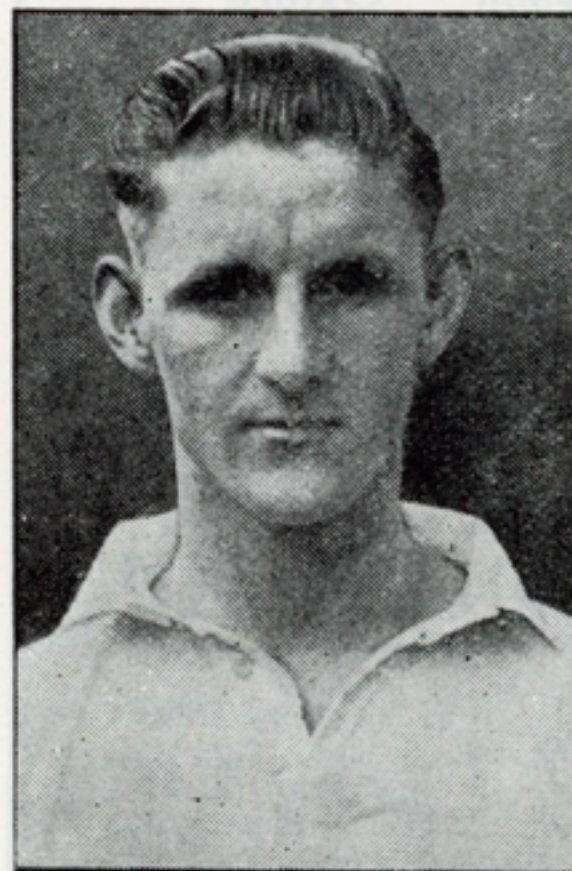
M.G.

DAGENITE BATTERIES

H.M.V. CAR RADIO

40 YEARS PROGRESSIVE MOTORING

WALLY SHANKS (left - half). A great-hearted player, whose value was recognised by the club earlier this year when both he and Morton were awarded full benefits, even though much of their service had been with the Reserves. Shanks came to Luton on trial as an outside-right, after he had had a spell with Chelsea, and he occupied every position in the forward line until his best place—wing-half—was discovered. Had the misfortune to be severely injured at Hull last September and was out of football for the best part of six months. Showed a return to fitness and full confidence and returned to the first team in effective style at Everton in March. His tenacious, never-say-die approach to the game, plus his good distribution of the ball, make him a most valuable half-back.



RAY SMITH (left-half). Another player who never knows when he is beaten, but he has yet to acquire the same measure of skill in his use of the ball. There is plenty of time for this to develop but, at the moment, his chief attribute is his hard, fearless tackling. Made his League debut at Doncaster last season and his rugged style may earn him other chances. Is beginning his third full season with the Town, who signed him from Evenwood Town after giving him a trial with their "A" team, then in the London Mid-Week League. Has been tried with distinct success both at left-back and centre-half.

SUMMER SERVICES

TO

**BOURNEMOUTH, CLACTON, DOVERCOURT, YARMOUTH,
HUNSTANTON, JAYWICK SANDS, MARGATE, SKEGNESS,
SOUTHEND, SOUTHSEA, WHIPSDADE**

**Excursions throughout the Season to other
Seaside Resorts and all places of interest**

**Regular Time Tabled Omnibus Services
provided in the following Counties :—**

| | | |
|------------|------------|-------------|
| Bedford | Hertford | Northampton |
| Buckingham | Huntingdon | Oxford |
| Cambridge | Leicester | Rutland |
| | Lincoln | |

PRIVATE HIRE SERVICE

*We will be pleased to Submit a Quotation for
YOUR OUTING*

Please contact any of the undermentioned Company's
Offices

UNITED COUNTIES

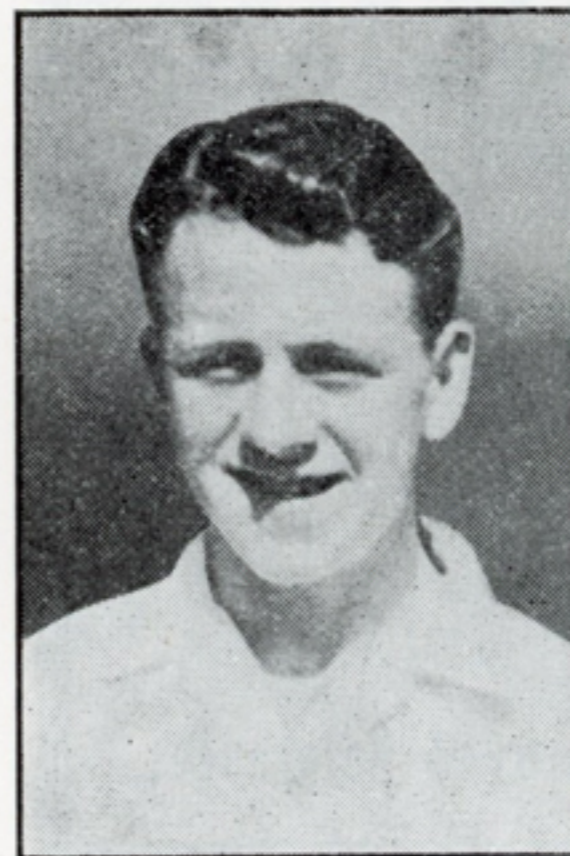
Local Offices:

Park Square, Castle Street,
and Williamson Street,
LUTON. (Phone 5860)

Head Office:

Houghton Road,
NORTHAMPTON.
Phone 632-633

ROY DAVIES (outside - right). South African-born player, who had a spell in Scottish League football with Clyde before joining the Town for a substantial fee in May, 1951. Maintained a regular place in the Town's League team last season until he fractured an ankle in the Cup-tie with Arsenal and did not play again afterwards. That he is fully fit again he has proved this summer by his bowling feats for Luton Corinthians and, occasionally, for Luton Town. Is one of the fastest bowlers in these parts. Two-footed, he can take a turn on the left wing, and did so in one of the Festival matches. Played at centre-forward in two of the Cup-ties with Brentford.



MICHAEL CULLEN (outside-right). Made no mistake about taking his chance when he was drafted into the first team for his League debut against Birmingham at St. Andrew's on April 26. His display in that match and the following one against Barnsley earned him a place in the party for the Irish tour. This 20-years-old Scot, whom former Town captain, Doug. Gardiner, recommended to the club, has now finished his R.A.F. service and, with the advantage of regular, planned training, should go ahead this season. A clever ball player who must discard a tendency to try a little too much, he centres the ball most accurately and has a cracking shot.

Members of the National Sporting League

W. H. LANCASTER & SONS

56 Cambridge Street • Luton

Commission Agents

Established 1907

HORSE RACING



COURTESY

GREYHOUND
RACING

Telephone:

PRIVACY

FOOTBALL

2340

PROMPT
PAYMENT

6 lines

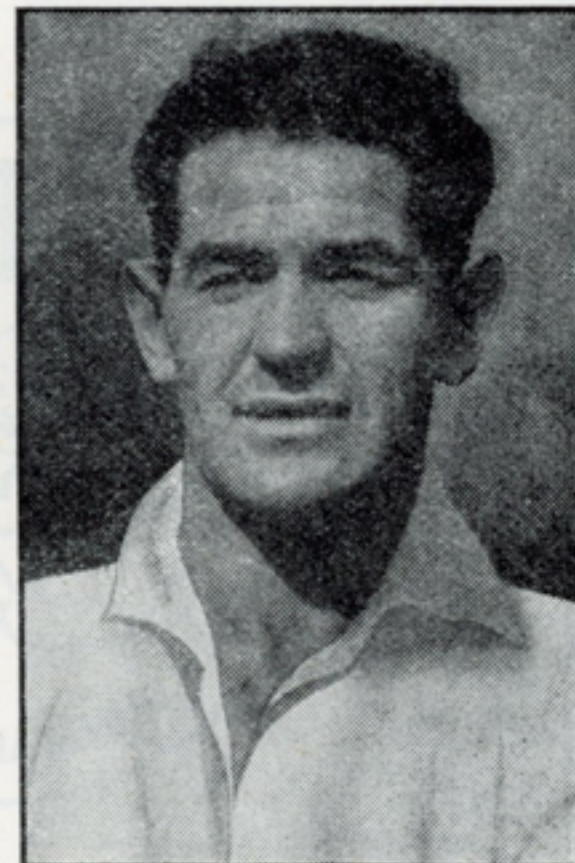
Telegrams:

"Requre" Luton, Beds.

Credit Accounts

Opened on Approved References

JESSE PYE (inside-right). This is likely to be the position for which he will be required by the Town, although he has led the England attack and scored two goals from centre-forward in the F.A. Cup Final of 1949. Born near Sheffield, he was on Sheffield United's books for a short time just prior to the war and joined Notts County when he was demobilized from the Army, in which he served in the Middle East and Italy. Earned a big reputation in Army football and maintained it in England, for he played at inside-right against Belgium in 1946. Came his transfer to Wolves for £10,000, with whom he established himself as a regular goal-scorer. Led the England attack against Eire in September, 1949, and went on tour with the England "B" team in the summer of 1950, playing against Holland, Italy "B" and Luxembourg. Luton signed him for a fee verging on five figures in July.



GORDON TURNER (inside-right). Converted from a wing-half during last season and drafted into the League side to fill the gap left by the transfer of Willie Davie to Huddersfield Town. Jack Taylor switched to the left to make room for him. Scorer of some sensational goals—none more so than the one which knocked Charlton out of the Cup. Obtained a "hat-trick" in half-an-hour against West Ham on Boxing Day and is quick to snap up a scoring opportunity. Whether inside-forward will prove to be his final position remains to be seen and, perhaps, will be dictated as much by circumstances as anything else, for there are thoughts at Kenilworth-road that he could develop into a first-class wing-half. Son of a former Hull City player.

Telephone : LUTON 516



**PASTEURISED
TUBERCULIN TESTED
STERILISED
and YOGHOURT
MILK**

181/5 DUNSTABLE ROAD - LUTON

Branch at 312 BISCOT ROAD

JOE SCOTT (inside-right). Signed from Spennymoor along with Miller last February, but not a lot has been seen of him because of R.A.F. duty and an injury which kept him out for a time. However, he did hit the headlines late in April when he led the Reserves' attack against Watford and scored two sparkling goals. Judging by that showing, he may be kept in the middle, but, as an inside forward, he shows good ball control, distributes it well and is not afraid to have a crack at goal. Like Miller, he has been on the books of a League club previously, for he had a short spell with Newcastle United. Has some months to serve in the Forces yet.



JOHN GROVES (inside-right). Tall, quick-moving player with a football brain, for whom a big future in the game is predicted. Army service will probably aid him to develop physically, but he is not likely to be available regularly for the Town for some considerable time. Football is in his blood, for he is the son of Arthur Groves, former Derby County inside forward, who was a team-mate of both Dally Duncan and Ralph Hann. John has twice met with severe injuries during his brief professional career, but he has come back each time with his confidence unimpaired and he is one of the club's big hopes for the future.

FOR

Ford

SERVICE & PARTS

FACTORY-TRAINED MECHANICS

: : FIXED CHARGES : :

The
Luton Motor Company Ltd.

DUNSTABLE ROAD,

LUTON

Phone 3713

HUGH McJARROW (centre-forward). Made a sensational debut for the Town on February 16 with two quick goals against Nottingham Forest. After that, a toe injury kept him out of the game for several weeks and he was unable to play in the Cup-ties because of this. In all, he made only five first team appearances, but scored five goals, a performance that augurs well for this season. A Scot, he came to the fore with Chesterfield, whose leading scorer he was for a couple of seasons before moving on to Sheffield Wednesday to aid them in their successful 1949-50 promotion bid, when he scored five goals in 12 matches. The following season when the Wednesday were relegated, he headed their scoring list with 14.



BERNARD MOORE (centre-forward). Was the idol of the Hastings crowd and the most prolific goal-scorer in the Southern League when the Town paid a £4,000 fee for him a year last February. His seven goals during the closing weeks of the 1950-51 season played no small part in the Town retaining their Division II status. Injury in the first match of the season, cost him his first team place for a spell, but he came back midway through the season to lead the line with dash and cleverness. He shook all London when he headed the first goal against Arsenal. Likes to make forays down the wing, where he shows speed and resource and these tactics had the effect of upsetting several centre-halves last season. Hits a dead ball tremendously hard.

LUTON TOWN F.C. 1st XI FIXTURES, 1952-53

DIVISION II

| Date | Opponents | Ground | Goals | | | Date | Opponents | Ground | Goals | |
|---------|------------------------|---------|-------|---------|---|--------|--------------------------|---------|-------|---------|
| | | | For | Against | | | | | For | Against |
| 1952 | | | | | | 1953 | | | | |
| Aug. 23 | Plymouth Argyle | A (—) | | | These figures are the copyright of the Football League, Ltd., and are reproduced with their permission. | Jan. 3 | Rotherham United | A (1—0) | | |
| " 27 | Birmingham City | H (2—4) | | | | " 10 | F.A. Cup (3rd Round) | | | |
| " 30 | Rotherham United | H (1—1) | | | | " 17 | Fulham | H (—) | | |
| Sept. 3 | Birmingham City | A (1—3) | | | | " 24 | West Ham | A (0—3) | | |
| " 6 | Fulham | A (—) | | | | " 31 | F.A. Cup (4th Round) | | | |
| " 10 | Swansea Town | H (2—2) | | | | Feb. 7 | Leicester City | H (1—2) | | |
| " 13 | West Ham | H (6—1) | | | | " 14 | (5) Notts County | A (4—5) | | |
| " 18 | Swansea Town | A (3—0) | | | | " 21 | Southampton | H (2—1) | | |
| " 20 | Leicester City | A (3—3) | | | | " 28 | (6) Huddersfield Town .. | H (—) | | |
| " 27 | Notts County | H (6—0) | | | | Mar. 7 | Sheffield United | A (0—3) | | |
| Oct. 4 | Southampton | A (3—2) | | | | " 14 | Barnsley | H (4—2) | | |
| " 11 | Huddersfield Town | A (—) | | | | " 21 | Lincoln City | A (—) | | |
| " 18 | Sheffield United | H (2—1) | | | | " 28 | Hull City | H (1—1) | | |
| " 25 | Barnsley | A (2—1) | | | | Apl. 3 | Bury | A (1—0) | | |
| Nov. 1 | Lincoln City | H (—) | | | | " 4 | Blackburn Rovers | A (1—2) | | |
| " 8 | Hull City | A (2—1) | | | | " 6 | Bury | H (2—1) | | |
| " 15 | Blackburn Rovers | H (1—1) | | | | " 11 | Nottingham Forest | H (3—3) | | |
| " 22 | Nottingham Forest | A (0—2) | | | | " 18 | Everton | A (3—1) | | |
| " 29 | Everton | H (1—1) | | | | " 25 | Brentford | H (0—2) | | |
| Dec. 6 | Brentford | A (3—3) | | | | May 2 | Doncaster Rovers | A (1—1) | | |
| " 13 | Doncaster Rovers | H (1—4) | | | | | | | | |
| " 20 | Plymouth Argyle | H (—) | | | | | | | | |
| " 25 | | | | | | | | | | |
| " 26 | Leeds United | H (2—1) | | | | | | | | |
| " 27 | Leeds United | A (1—1) | | | | | | | | |

The figures in parentheses are results of corresponding matches last season. Huddersfield and Fulham take the places of Sheffield Wednesday and Cardiff City, promoted to Division I, and Plymouth and Lincoln replace Coventry and Queen's Park Rangers, relegated to Division III.

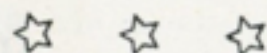
J. W. GREEN'S

Quality Ales

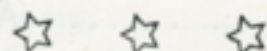
J. W. GREEN LTD., THE BREWERY, LUTON.

Telephone: LUTON 3131

“ Won by a short head ”—“ Score at end of first day’s play ”—“ Wins the men’s singles,” etc. . . .



ALL THESE SPORTS ANNOUNCEMENTS MEAN SO MUCH MORE WHEN YOU SEE THE GAME AT THE INSTANT IT IS BEING PLAYED—in the comfort of your own armchair.



Ask for details of the latest Television Receivers now, and have a demonstration in your own home.

9, 10, 12 & 14 inch Models in stock.

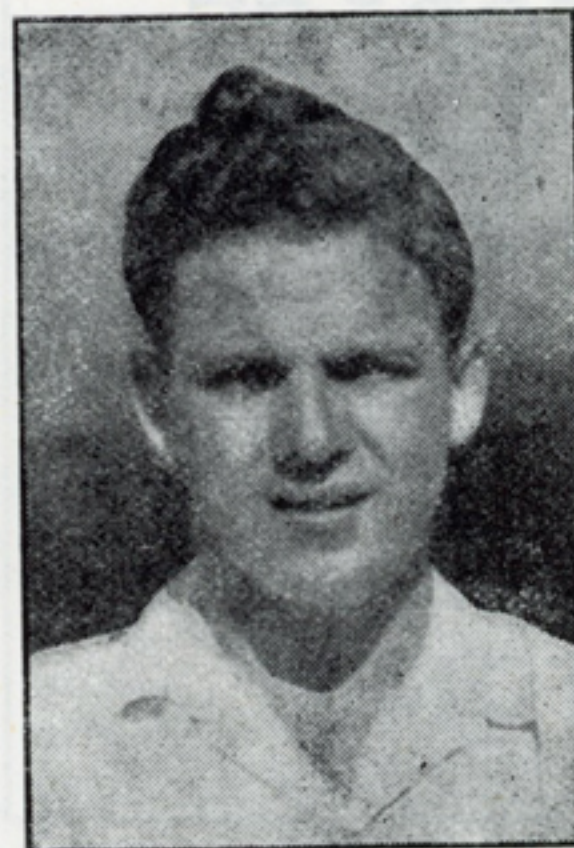
at

A. T. SNOWDEN LTD.
171 Dunstable Road and 24 Mill Street,
LUTON

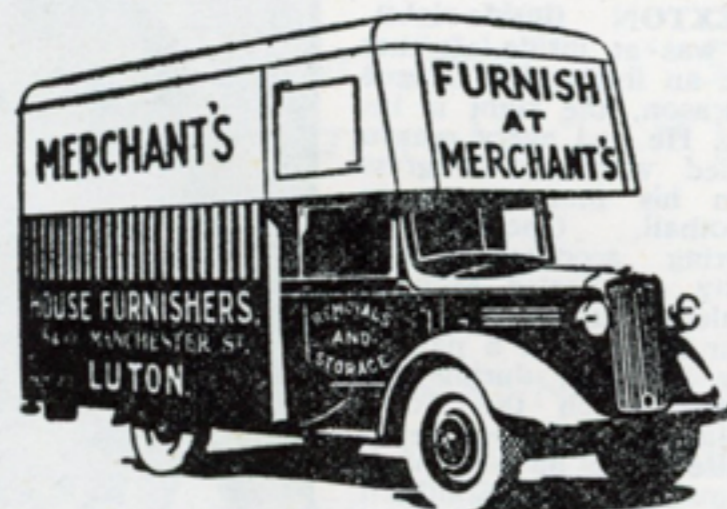
Phone Luton 1496

Estd. 27 Years

DAVID SEXTON (inside-right). Although it was at inside-left that Sexton made an impressive League debut last season, the right is his natural flank. He had every reason to be satisfied with the progress he made in his first season in League football. Opened his League scoring account against Coventry City on Easter Monday and was unlucky to be kept off the Irish tour because of a painful ankle injury received during the friendly match which the Town played at Hastings. Luton heard of his promise while he was playing for Chelmsford in the Southern League and, after watching him several times, secured his signature for a four-figure fee in the face of competition from at least one First Division and one Second Division club.



ARTHUR TAYLOR (inside-left). Although he was signed as an inside forward, it was mostly as a winger that he was utilised by the Town last season in the Reserve team. He had a very good spell at outside-left, although his natural leanings are towards an inside position. Has the ability to beat an opponent cleverly and the knack of scoring snap goals. An Irishman, he gained honours as a schoolboy and a youth and threw in his lot with Glentoran, from which club Luton secured him for a substantial fee two years ago. Not very tall, but he is stockily built.



★ REMOVALS AND STORAGE

FURNISH
AT

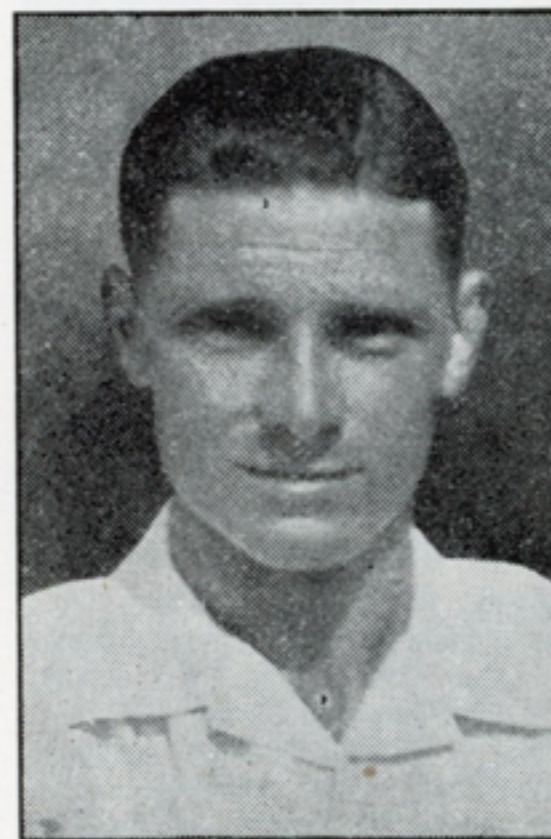
MERCHANT'S

8 & 10 MANCHESTER ST.

Phone 252 **LUTON** Est. 1855

DEREK ALLEN (inside-left).

Although he was living in Luton, he was playing his football for Alton Town in the Hampshire League until he came to the Town's notice. Was then an amateur and was chosen to play for Hampshire during the early part of last season. Signed amateur forms for the Town and was offered terms as a professional after giving a great display for the Reserves against Charlton Reserves on Christmas Day. Accepted on a part-time basis and he still carries on with his job as a driver. A clever, constructive player to whom the experience of last season should prove to be most valuable.



BERT MITCHELL (outside-left).

The most free-scoring winger the Town have had since the days of George Stephenson, his tally last season being 17, plus a "doubtful" one which was universally earmarked "own goal" at St. Andrew's last season. Mitchell came to Luton from Northampton last summer with a lot of experience behind him, for he had been with Stoke City, Blackburn Rovers and Kettering before he joined the Cobblers, who took Jimmy Wilson in part-exchange. So successful was Mitchell that he was chosen for England's "B" team against Holland and scored the only goal from the penalty spot. Had a 100 per cent record with penalties last season and has a terrific shot with either foot. Injury which caused him to miss one match cost him his 100 per cent appearances record.

Fitted-out by Fosters...he's

SURE OF HIS PLACE



in any team
of well-dressed
enthusiasts!

FOSTER BROTHERS

A British Family Firm, Established and Directed by Fosters since 1876

Everything in
CLOTHING and
OUTFITTING for
Man, Youth & Boy

22-24
GEORGE ST.,
LUTON

KG

£40,000 Inside Forwards . . .



Willie Davie



Jack Taylor

Two inside-forwards for whose transfers the Town netted a combined fee of about £40,000.

WILLIE DAVIE went to Huddersfield Town last December in exchange for £23,000—a record sum for the Luton club. Despite the fact that he made a name for himself in First Division circles, he could not prevent Huddersfield suffering relegation and he will be seen at Kenilworth Road this season.

JACK TAYLOR drew the scouts last season by his ability as a goal-scorer and he hit the back of the net 24 times in League and Cup matches.

His play earned him a place in the England "B" team against Holland, and if he strikes his best form this season, there may be more honours in store for him. With Wolves, whom he joined in June, he will be well in the limelight.

LUTON TOWN F.C. 2nd XI FIXTURES, 1952-53

| Date | Opponents | Ground | Goals | |
|---------|----------------------------|--------|-------|---------|
| | | | For | Against |
| 1952 | | | | |
| Aug. 23 | Bristol Rovers | H | | |
| " 28 | Queen's Park Rangers | A | | |
| " 30 | Watford | A | | |
| Sept. 3 | Brighton | H | | |
| " 6 | Southend United | H | | |
| " 11 | Leyton Orient | A | | |
| " 13 | Bournemouth | A | | |
| " 17 | Leyton Orient | H | | |
| " 20 | Aldershot | H | | |
| " 27 | Leicester | A | | |
| Oct. 1 | Brighton | A | | |
| " 4 | Bristol City | H | | |
| " 8 | Swindon | A | | |
| " 11 | Swansea | H | | |
| " 15 | Swindon | H | | |
| " 18 | Ipswich | A | | |
| " 25 | Crystal Palace | H | | |
| Nov. 1 | Brentford | A | | |
| " 8 | Brentford | H | | |
| " 15 | Southend United | A | | |
| " 22 | Queen's Park Rangers | H | | |
| " 29 | Bristol City | A | | |
| Dec. 6 | Bournemouth | H | | |
| " 13 | Crystal Palace | A | | |
| " 20 | Bristol Rovers | A | | |

FOOTBALL COMBINATION

| Date | Opponents | Ground | Goals | |
|--|-------------------|--------|-------|---------|
| | | | For | Against |
| 1952 | | | | |
| Dec. 25 | Aldershot | A | | |
| " 27 | Ipswich | H | | |
| 1953 | | | | |
| Jan. 3 | Watford | H | | |
| " 10 | | | | |
| " 17 | Swansea | A | | |
| " 24 | Leicester | H | | |
| COMBINATION CUP | | | | |
| Jan. 31 | Watford | H | | |
| Feb. 7 | Coventry | A | | |
| " 14 | Coventry | H | | |
| " 21 | Leicester | A | | |
| " 28 | | | | |
| Mar. 7 | Northampton | H | | |
| " 14 | Ipswich | A | | |
| " 21 | Norwich | A | | |
| " 28 | Watford | A | | |
| Apl. 3 | Norwich | H | | |
| " 4 | Ipswich | H | | |
| " 11 | Northampton | A | | |
| " 18 | Birmingham | H | | |
| To be arranged: Birmingham (A), Leicester (H) | | | | |

LUTON'S LEADING OUTFITTERS

LACEY'S

ALWAYS SOMETHING NEW AT

FOR MEN, YOUTHS AND BOYS

FOR

OVERCOATS

14 WELLINGTON STREET, LUTON

G. E. COSTIN LTD.

Coach Proprietors and
Haulage Contractors

67 WEST STREET
DUNSTABLE

TEL. 30

LUXURIOUS COACHES FOR PRIVATE PARTIES

FOOTBALL TEAMS
AND SUPPORTERS
SCHOOL OUTINGS
SEASIDE RESORTS
PLACES OF INTEREST

See bills announcing trips

ENQUIRIES INVITED - - ESTIMATES FREE

TOWN PLAYERS' APPEARANCES

SEASON 1951-52

The League, Division II.—B. Streten 42, B. Mitchell, T. Aherne, C. Watkins each 41, G. Stobbart 38, J. Taylor 36, S. Owen 35, R. Morton 28, W. Cooke 27, R. Davies 25, B. Moore, W. Davie each 20, W. Shanks 18, S. Dunne 13, G. Turner 11, D. Sexton 6, H. McJarrow 5, L. Jones, L. Hall each 3, M. Cullen, J. Pemberton, W. Havenga each 2, R. Smith, P. Stone, R. Wyldes each 1.

F.A. Cup-ties.—B. Streten, T. Aherne, C. Watkins R. Morton, R. Davies, J. Taylor, B. Mitchell, G. Stobbart each 6; W. Cooke 5, S. Owen 4, B. Moore, G. Turner each 3, L. Hall 2, S. Dunne 1.

Other Matches.—B. Streten, G. Stobbart, D. Sexton each 4, T. Aherne, W. Shanks, R. Morton, B. Mitchell, L. Jones, S. Owen, B. Moore each 3, W. Cooke, C. Watkins each 2, R. Smith, R. Davies, J. Taylor, W. Davie, G. Turner, H. McJarrow, R. Wyldes each 1.

Football Combination and Combination Cup.—L. Jones 36, L. Hall 33, R. Smith, A. Taylor each 31, G. Turner, D. Sexton each 29, S. Dunne 27, R. Wyldes 26, J. Pemberton, R. Baynham, W. Havenga each 25, B. Moore 23, T. Kelly 17, R. Morton, M. Cullen each 15, D. Allen 10, A. Thompson 9, W. Cooke, E. Stibbards each 8, E. Bennett, W. Shanks each 7, J. Groves, D. Williams each 6, H. McJarrow, Scott, G. Stobbart, D. Johnston each 5, Miller, P. Stone each 4, T. Wheeler, K. Hawkes each 3, H. Brown, G. Bradley each 1.

LUTON TOWN F.C. GOAL SCORERS

The League, Division II.—J. Taylor 20, B. Mitchell 16, G. Stobbart 12, B. Moore 8, H. McJarrow 5, R. Davies G. Turner each 4, R. Morton 2, W. Davie, W. Havenga, C. Watkins, R. Wyldes, D. Sexton, opponent each 1.

F.A. Cup-ties.—J. Taylor 4, G. Turner, B. Moore each 2, B. Mitchell, R. Davies, R. Morton each 1.

Other Matches.—B. Moore 4, G. Stobbart 3, G. Turner, D. Sexton, W. Davie each 2, H. McJarrow 1.

Combination and Combination Cup.—B. Moore 12, W. Havenga 10, G. Turner 9, D. Sexton 8, R. Morton, J. Pemberton, A. Taylor, R. Wyldes each 6, M. Cullen, G. Stobbart each 4, D. Allen, H. McJarrow each 3, L. Hall, E. Bennett, Scott, R. Smith, opponents each 2, J. Groves, W. Shanks each 1.

WINNERS

AND RUNNERS UP



will treasure their

SPORTS CUPS

MEDALS, SHIELDS

SPOONS & other

PRESENTATIONS

FROM
James Walker

48 GEORGE STREET, LUTON

and 77 Branches in London and the Home Counties

LUTON RESULTS IN F.A. CUP

| | | | | |
|---------|-----------------------|----------------------|--------|-----|
| 1919-20 | Dec. 20—6th Q. Round: | Brighton |A | 1—0 |
| | Jan. 12—1st Round: | Coventry City |H | 2—2 |
| | Jan. 16—1st Round: | Coventry City* |A | 1—0 |
| | Jan. 31—2nd Round: | Liverpool |H | 0—2 |
| 1920-21 | Dec. 18—6th Q. Round: | Rotherham County |A | 3—1 |
| | Jan. 8—1st Round: | Birmingham |H | 2—1 |
| | Jan. 29—2nd Round: | South Shields |A | 4—0 |
| | Feb. 19—3rd Round: | Preston North End |H | 2—3 |
| 1921-22 | Jan. 7—1st Round: | Portsmouth |A | 1—1 |
| | Jan. 11—1st Round: | Portsmouth* |H | 2—1 |
| | Jan. 28—2nd Round: | Aston Villa |A | 0—1 |
| 1922-23 | Jan. 13—1st Round: | Bury |A | 1—2 |
| 1923-24 | Jan. 12—1st Round: | Arsenal |A | 1—4 |
| 1924-25 | Jan. 10—1st Round: | West Brom. |A | 0—4 |
| 1925-26 | Nov. 28—1st Round: | Folkestone |H | 3—0 |
| | Dec. 12—2nd Round: | Aberdare |A | 0—1 |
| 1926-27 | Nov. 27—1st Round: | London Caledonians |H | 4—2 |
| | Dec. 11—2nd Round: | Northfleet |H | 6—2 |
| | Jan. 8—3rd Round: | Chelsea |A | 0—4 |
| 1927-28 | Nov. 26—1st Round: | Clapton |H | 2—2 |
| | Nov. 30—1st Round: | Clapton* |N | 4—2 |
| | Dec. 10—2nd Round: | Norwich |H | 6—0 |
| | Jan. 14—3rd Round: | Bolton |A | 1—2 |
| 1928-29 | Nov. 24—1st Round: | Southend |H | 5—1 |
| | Dec. 8—2nd Round: | Fulham |A | 0—0 |
| | Dec. 13—2nd Round: | Fulham* |H | 4—1 |
| | Jan. 12—3rd Round: | Crystal Palace |H | 0—0 |
| | Jan. 16—3rd Round: | Crystal Palace* |A | 0—7 |
| 1929-30 | Nov. 30—1st Round: | Queen's Park Rangers |H | 2—3 |
| 1930-31 | Nov. 29—1st Round: | Clapton Orient |H | 2—2 |
| | Dec. 4—1st Round: | Clapton Orient* |A | 4—2 |
| | Dec. 13—2nd Round: | Watford |A | 1—3 |
| 1931-32 | Nov. 28—1st Round: | Swindon |A | 5—0 |
| | Dec. 12—2nd Round: | Lincoln |A | 2—2 |
| | Dec. 16—2nd Round: | Lincoln* |H | 4—1 |
| | Jan. 9—3rd Round: | Wolves |H | 1—2 |
| 1932-33 | Nov. 26—1st Round: | Kingstonians |H | 2 2 |
| | Nov. 30—1st Round: | Kingstonians* |A | 3—2 |
| | Dec. 10—2nd Round: | Stockport County |A | 3—2 |
| | Jan. 14—3rd Round: | Barnsley |A | 0—0 |
| | Jan. 18—3rd Round: | Barnsley* |H | 2—0 |
| | Jan. 28—4th Round: | Tottenham Hotspur |H | 2—0 |
| | Feb. 18—5th Round: | Halifax Town |A | 2—0 |
| | Mar. 4—6th Round: | Everton |A | 0—6 |

GO BY BUS!



Route 212—Hourly Service between
LUTON, BARTON, SHILLINGTON
and HENLOW CAMP
 also Gravenhurst, Campton,
 Meppershall and Stondon

Routes 205 & 206—between
LUTON, CODICOTE and WELWYN

Route 205 Daily via Peters Green and Kimpton
 Route 206 Sats. & Suns. via Bendish and Whitwell
 (Thurs. Luton, Bendish and Whitwell only)
 Connecting at Whitwell with
 Route 204 to St. Paul's Walden and Hitchin

ADDITIONAL SATURDAY AFTERNOON JOURNEYS
 ON ALL ROUTES Time Tables available on application

Buses and Coaches for Private Hire
 Any Size Party Any Distance

Local Depot :
LONDON ROAD, HENLOW CAMP

'Phone : Henlow Camp 244

LUTON RESULTS IN F.A. CUP—Continued

| | | | | |
|---------|--------------------|----------------------|--------|-----|
| 1933-34 | Jan. 12—3rd Round: | Arsenal |H | 0—1 |
| 1934-35 | Jan. 12—3rd Round: | Chelsea |A | 1—1 |
| | Jan. 16—3rd Round: | Chelsea* |H | 2—0 |
| | Jan. 26—4th Round: | Burnley |A | 1—3 |
| 1935-36 | Jan. 11—3rd Round: | West Ham |A | 2—2 |
| | Jan. 15—3rd Round: | West Ham* |H | 4—0 |
| | Jan. 25—4th Round: | Manchester City |A | 1—2 |
| 1936-37 | Jan. 16—3rd Round: | Blackpool |H | 3—3 |
| | Jan. 20—3rd Round: | Blackpool* |A | 2—1 |
| | Jan. 30—4th Round: | Sunderland |H | 2—2 |
| | Feb. 3—4th Round: | Sunderland* |A | 1—3 |
| 1937-38 | Jan. 8—3rd Round: | Scarborough |A | 1—1 |
| | Jan. 12—3rd Round: | Scarborough* |H | 5—1 |
| | Jan. 22—4th Round: | Swindon Town |H | 2—1 |
| | Feb. 12—5th Round: | Manchester City |H | 1—3 |
| 1938-39 | Jan. 7—3rd Round: | Liverpool |A | 0—3 |
| 1945-46 | Jan. 5—3rd Round: | Derby County |H | 0—6 |
| | Jan. 9—3rd Round: | Derby County |A | 0—3 |
| 1946-47 | Jan. 11—3rd Round: | Notts County |H | 6—0 |
| | Jan. 25—4th Round: | Swansea Town |H | 2—0 |
| | Feb. 8—5th Round: | Burnley |H | 0—0 |
| | Feb. 11—5th Round: | Burnley* |A | 0—3 |
| 1947-48 | Jan. 10—3rd Round: | Plymouth |A | 4—2 |
| | Jan. 24—4th Round: | Coventry |H | 3—2 |
| | Feb. 7—5th Round: | Queen's Park Rangers |A | 1—3 |
| 1948-49 | Jan. 8—3rd Round: | West Ham |H | 3—1 |
| | Jan. 29—4th Round: | Walsall |H | 4—0 |
| | Feb. 12—5th Round: | Leicester City |H | 5—5 |
| | Feb. 19—5th Round: | Leicester City* |A | 3—5 |
| 1949-50 | Jan. 7—3rd Round: | Grimsby Town |H | 3—4 |
| 1950-51 | Jan. 6—3rd Round: | Portsmouth |H | 2—0 |
| | Jan. 27—4th Round: | Bristol Rovers |H | 1—2 |
| 1951-52 | Jan. 12—3rd Round: | Charlton Athletic |H | 1—0 |
| | Feb. 2—4th Round: | Brentford |H | 2—2 |
| | Feb. 6—4th Round: | Brentford* |A | 0—0 |
| | Feb. 18—4th Round: | Brentford* |N | 3—2 |
| | Feb. 23—5th Round: | Swindon Town |H | 3—1 |
| | Mar. 8—6th Round: | Arsenal |H | 2—3 |

*Replay

(N) At Highbury

The COVINGTON SPORTY



A Pipe Designed to Meet
the Outdoor Sportsmen's Needs

by

COVINGTONS

of

5 CHEAPSIDE 5

LUTON'S TOBACCONISTS

Tel. 1093

We claim—

There's nothing like a "Sporty"

F.A. CUP WINNERS SINCE 1900

- 1899-1900—Bury beat Southampton (4—0)
- 1900-01—Tottenham Hotspur beat Sheffield United (3—1, after a draw 2—2)
- 1901-02—Sheffield United beat Southampton (2—1, after a draw 1—1)
- 1902-03—Bury beat Derby County (6—0)
- 1903-04—Manchester City beat Bolton Wanderers (1—0)
- 1904-05—Aston Villa beat Newcastle United (2—0)
- 1905-06—Everton beat Newcastle United (1—0)
- 1906-07—Sheffield Wednesday beat Everton (2—1)
- 1907-08—Wolverhampton Wanderers beat Newcastle United (3—1)
- 1908-09—Manchester United beat Bristol City (1—0)
- 1909-10—Newcastle United beat Barnsley (2—0, after a draw 1—1)
- 1910-11—Bradford City beat Newcastle United (1—0, after a draw 0—0)
- 1911-12—Barnsley beat West Bromwich Albion (1—0, after a draw 0—0)
- 1912-13—Aston Villa beat Sunderland (1—0)
- 1913-14—Burnley beat Liverpool (1—0)
- 1914-15—Sheffield United beat Chelsea (3—0)
- 1915-16, 1916-17, 1918-19—No competition
- 1919-20—Aston Villa beat Huddersfield Town (1—0)
- 1920-21—Tottenham Hotspur beat Wolverhampton Wanderers (1—0)
- 1921-22—Huddersfield Town beat Preston North End (1—0)
- 1922-23—Bolton Wanderers beat West Ham (2—0)
- 1923-24—Newcastle United beat Aston Villa (2—0)
- 1924-25—Sheffield United beat Cardiff City (1—0)
- 1925-26—Bolton Wanderers beat Manchester City (1—0)
- 1926-27—Cardiff City beat Arsenal (1—0)
- 1927-28—Blackburn Rovers beat Huddersfield Town (3—1)
- 1928-29—Bolton Wanderers beat Portsmouth (2—0)
- 1929-30—Arsenal beat Huddersfield Town (2—0)
- 1930-31—West Bromwich Albion beat Birmingham (2—1)
- 1931-32—Newcastle United beat Arsenal (2—1)
- 1932-33—Everton beat Manchester City (3—0)
- 1933-34—Manchester City beat Portsmouth (2—1)
- 1934-35—Sheffield Wednesday beat West Bromwich Albion (4—2)
- 1935-36—Arsenal beat Sheffield United (1—0)
- 1936-37—Sunderland beat Preston North End (3—1)
- 1937-38—Preston N.E. beat Huddersfield Town (1—0, after extra time)
- 1938-39—Portsmouth beat Wolverhampton Wanderers (4—1)
- 1939-40, 1940-41, 1941-42, 1942-43, 1943-44, 1944-45—No competition
- 1945-46—Derby County beat Charlton Athletic (4—1, after extra time)
- 1946-47—Charlton Athletic beat Burnley (1—0, after extra time)
- 1947-48—Manchester United beat Blackpool (4—2)
- 1948-49—Wolverhampton Wanderers beat Leicester City (3—1)
- 1949-50—Arsenal beat Liverpool (2—0)
- 1950-51—Newcastle United beat Blackpool (2—0)
- 1951-52—Newcastle United beat Arsenal (1—0)

THE GOAL THAT KNOCKED CHARLTON OUT



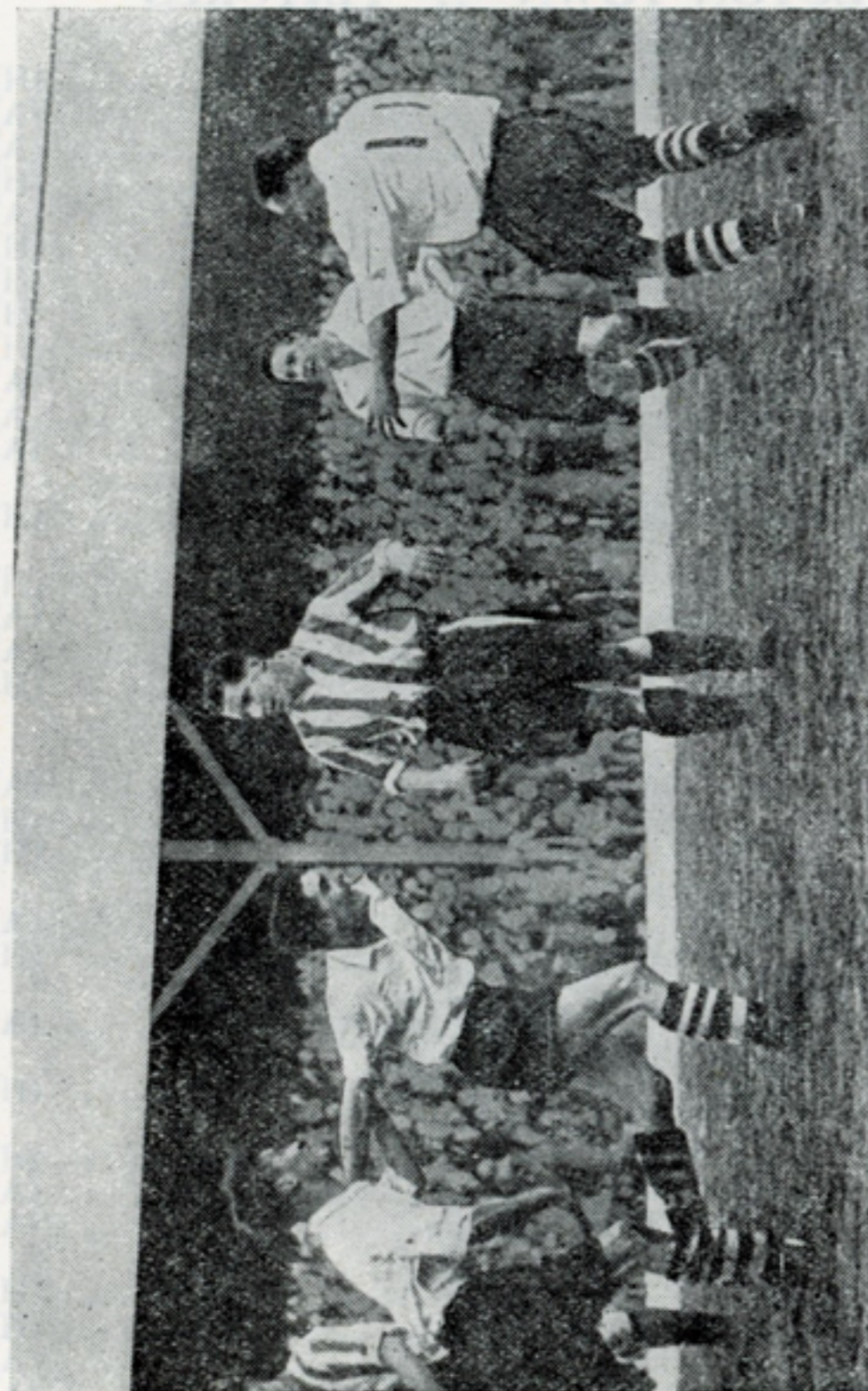
One of the most spectacular goals scored at Kenilworth Road last season was the one which took Luton into the fourth round of the F.A. Cup at the expense of Charlton Athletic. It was scored after eight minutes, from 15 yards' range, and this picture shows Gordon Turner scoring it.

LUTON TOWN "A" FIXTURES METROPOLITAN LEAGUE

| 1952 | | | |
|-------|-----|-----------------------------------|-----|
| Aug. | 23 | Dunstable Town | (H) |
| " | 30 | Haywards Heath | (A) |
| Sept. | 6 | Brighton "A" | (A) |
| " | 13 | Vickers-Armstrong | (H) |
| " | 20 | Twickenham | (A) |
| " | 27 | Headington | (H) |
| Oct. | 4 | Callenders Athletic | (H) |
| " | 11 | Brighton "A" | (H) |
| " | 18 | Dunstable Town (League Cup) | (H) |
| " | 25 | West Ham "A" | (A) |
| Nov. | 1 | Tottenham Hotspur "A" | (A) |
| " | 8 | Windsor | (A) |
| " | 15 | | |
| " | 22 | Newbury Town | (H) |
| " | 29 | | |
| Dec. | 6 | West Ham "A" | (H) |
| " | 13 | Headington | (A) |
| " | 20 | Horsham | (A) |
| " | *25 | Tottenham Hotspur | (H) |
| " | 27 | | |
| 1953 | | | |
| Jan. | 3 | Newbury Town | (A) |
| " | *10 | Haywards Heath | (H) |
| " | 17 | Hastings | (H) |
| " | 24 | | |
| " | 31 | Tonbridge | (A) |
| Feb. | 7 | Twickenham | (H) |
| " | 14 | | |
| " | 21 | Southwick | (A) |
| " | 28 | | |
| Mar. | 7 | Tonbridge | (H) |
| " | 14 | | |
| " | *21 | Windsor | (H) |
| " | 28 | Hastings | (A) |
| April | 3 | Dunstable Town | (A) |
| " | 4 | | |
| " | 6 | Horsham | (H) |
| " | 11 | Southwick | (H) |
| " | 18 | Vickers-Armstrong | (A) |
| " | 25 | Callenders Athletic | (A) |

* Matches to be played at Kenilworth Road.

All other home fixtures will be played on opponents' grounds.



When Luton met Brentford in the fourth round of the F.A. Cup they looked set for an easy passage through, for Turner and Taylor gave them a two-goals' lead. However, the "Bees" fought back and equalised, and the Town did not win through until after another 240 minutes of dour football. This picture shows Turner receiving congratulations from his excited colleagues after scoring in the first meeting.

BEDFORDSHIRE FOOTBALL ASSOCIATION

President: Lord Luke of Pavenham.

Vice-Presidents:

Messrs. F. A. Stanton, M. Swain, W. Pease, W. H. Bonfield.

Life Member: Mr. R. Sprague.

Hon. Secretary and Treasurer: Mr. A. D. McMullen,
37, Halfway Avenue, Luton. Telephone: Luton 4771.

Executive Council:

Division I: Mr. J. Chamberlain, Potton.

Division II: Mr. F. Jeeves, Potton.

Division III: Mr. A. J. Thompson, Bedford.

Division IV: Mr. E. W. Taylor, Bedford.

Division V: Mr. S. T. Shadrake, Bedford.

Division VI: Mr. O. R. Watson, Leighton Buzzard.

Division VII: Mr. P. Stevens, Luton.

Division VIII: Mr. R. Cooper, Luton.

Division IX: Mr. H. C. Oliver, Luton.

Division X: Mr. P. Wagstaffe, Dunstable.

Division XI: Mr. F. C. Crain, Luton.

LAST SEASON'S CUP-WINNERS

Professional: Luton Town.

Senior: Biggleswade Town.

Intermediate: Shillington Athletic.

Junior: Woburn Athletic.

Youth Cup (Under 18): Caddington Y.C.

Youth Cup (Under 16): Vauxhall Minors.

Inter-Youth League: Bedford Youth League.

BEDFORDSHIRE COUNTY CUP DATES

SENIOR

Preliminary Round Oct. 25

First Round Nov. 22

Second Round Jan. 3

Semi-Finals Feb. 14

INTERMEDIATE

Preliminary Round Oct. 4

First Round Nov. 8

Second Round Dec. 6

Third Round Jan. 10

Semi-Finals Feb. 7

JUNIOR

Ex. Prelim. Round Sept. 27

Preliminary Round Oct. 11

First Round Nov. 15

Second Round Dec. 6

Third Round Jan. 3

Semi-Finals Jan. 31

YOUTH CUPS

(Under 18)

Preliminary Round Oct. 4

First Round Nov. 1

Second Round .. Nov. 22

Third Round Dec. 27

Semi-Finals Jan. 31

(Under 16)

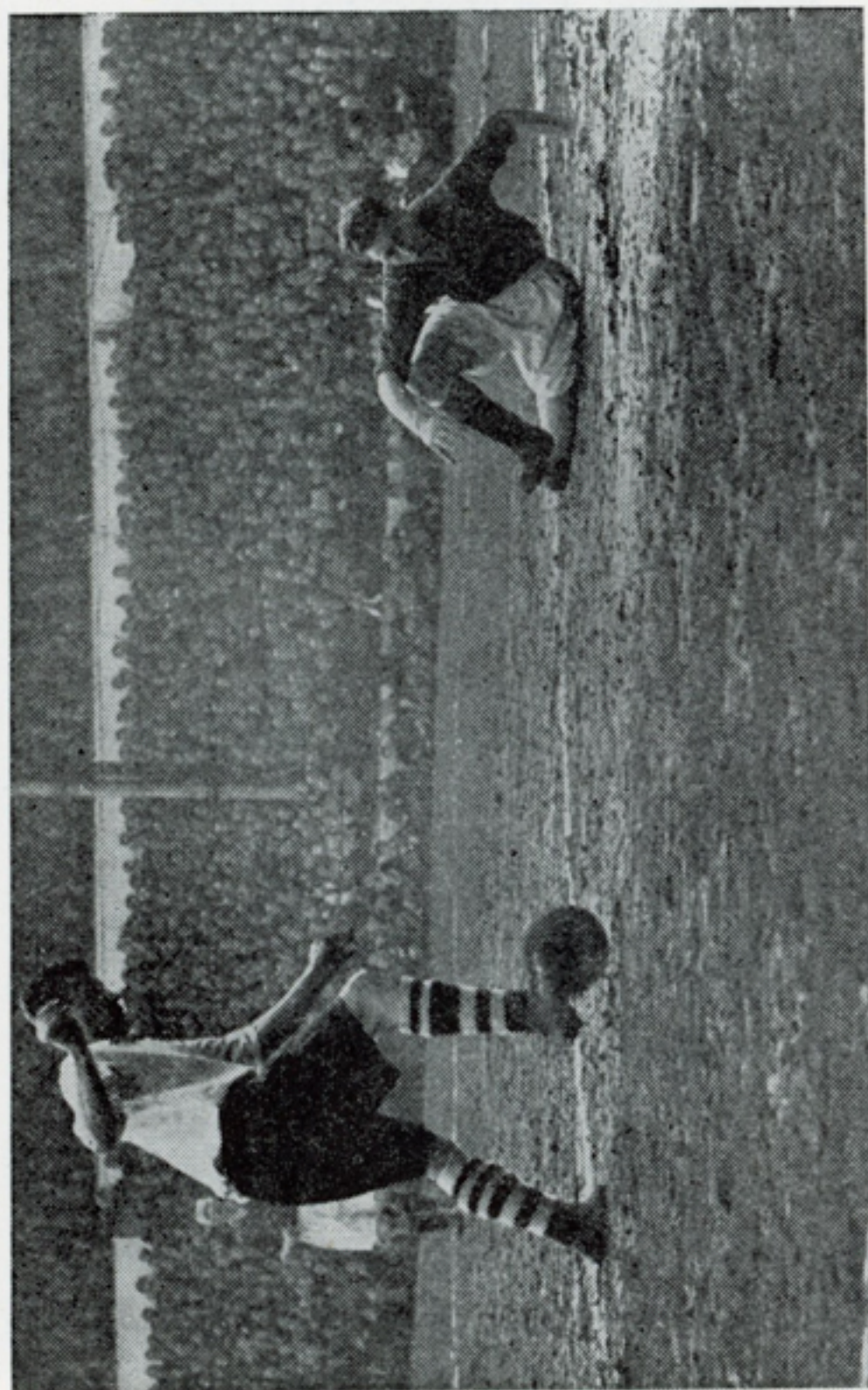
Preliminary Round Sept. 27

First Round Oct. 25

Second Round .. Nov. 15

Third Round Dec. 13

Semi-Finals Jan. 24



Although Swindon Town threatened to do a "giant-killing" act against Luton in the fifth round of the Cup—they took the lead in the sixth minute—Luton recovered and won 3-1. Here is Jack Taylor scoring the goal that put them on terms half a minute before the interval.

DUNSTABLE TOWN F.C

Chairman: Mr. J. J. Gracey.

Hon. Secretary: Mr. H. Stew, 20, First Avenue, Dunstable.
Telephone: Dunstable 755.

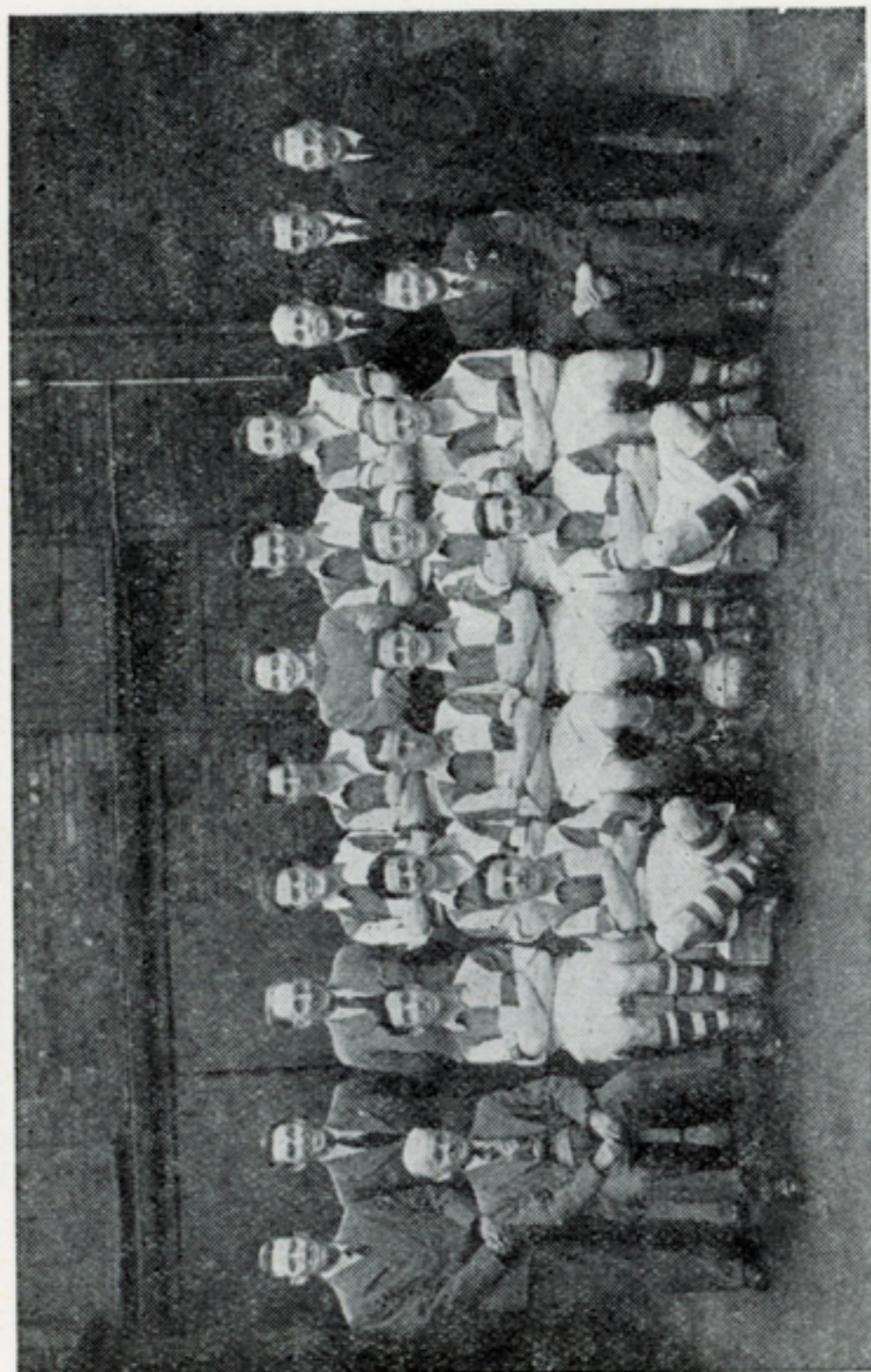
Assistant Hon. Secretary: Miss E. Coleman.

Hon. Treasurer: Mr. J. Head.

Colours: Shirts, blue; **Knickers,** white.

FIXTURES

| 1952 | | | |
|------|----|--|---|
| Aug. | 23 | Luton Town "A" | H |
| " | 30 | Southwick | A |
| " | 10 | Twickenham | A |
| " | 13 | Hitchin Town (Prelim. Round F.A. Cup) | H |
| " | 20 | Callenders Athletic | H |
| " | 27 | Haywards Heath | A |
| Oct. | 4 | Tottenham "A" | H |
| " | 11 | Windsor and Eton | H |
| " | 18 | Luton T. "A" (Met. League Challenge Cup) | A |
| " | 25 | Hastings United | H |
| Nov. | 1 | West Ham "A" | H |
| " | 15 | League Cup (2nd Round) | A |
| " | 29 | Headington United | A |
| Dec. | 6 | Vickers-Armstrong | H |
| " | 20 | West Ham "A" | A |
| " | 26 | Headington United | H |
| " | 27 | Tonbridge | A |
| 1953 | | | |
| " | 10 | Brighton "A" | H |
| " | 17 | Horsham | A |
| " | 24 | Tonbridge | H |
| " | 31 | Brighton "A" | A |
| " | 14 | Twickenham | H |
| " | 21 | Windsor and Eton | A |
| " | 28 | Callenders Athletic | A |
| Mar. | 7 | Newbury Town | H |
| " | 14 | Vickers-Armstrong | A |
| " | 21 | Horsham | H |
| " | 28 | Tottenham "A" | A |
| Apl. | 3 | Luton Town "A" | H |
| " | 4 | Haywards Heath | H |
| " | 18 | Southwick | H |
| " | 25 | Newbury Town | A |
| May | 2 | Hastings United | A |



Champions of the Luton and South Beds League, Premier Division, are Napier Sports, who lost only one league match last season. Players and officials in this picture are, back row, left to right: A. Wilson, A. Hooton (trainer), R. Davis, K. Tompkins, J. Bunce, R. Skeath, D. Kenrick, R. Clark, S. Tomlinson, F. Sanderson, C. F. Coles. Middle row: B. Holdstock, P. Walsh, B. Bachini, S. Weston, D. Bachini, S. Scott, D. Cubberley, C. Hicks. Front row: P. Boyland, J. Ault.

LUTON DISTRICT & SOUTH BEDS. LEAGUE

President: Major-General Sir Harold Wernher, G.C.V.O.

Senior Vice-President: Lady Zia Wernher.

Life Members:

Messrs. F. W. Haddon, J. J. Hunt.

Chairman: Mr. W. Pease.

Vice-Chairman: Mr. P. Stevens.

Hon. Secretary and Treasurer:

Mr. H. C. Oliver, 17, Mayne Avenue, Leagrave, Luton.

Telephone: Luton 4127.

Hon. Press Secretary: Mr. E. H. Pugh.

Executive Council:

Messrs. R. Cooper, E. Cullis and D. F. C Wells.

LEAGUE TABLES, 1951-52

PREMIER DIVISION

| | P. | W. | D. | L. | F. | A. | P. |
|------------------------------|----|----|----|----|-----|-----|----|
| Napier Sports | 26 | 21 | 4 | 1 | 130 | 30 | 46 |
| Shillington Athletic | 26 | 21 | 1 | 4 | 118 | 37 | 43 |
| Dagnall | 26 | 15 | 7 | 4 | 95 | 38 | 37 |
| Barton Rovers | 26 | 17 | 2 | 7 | 115 | 61 | 36 |
| Luton Co-op Youth Club | 26 | 16 | 3 | 7 | 91 | 51 | 35 |
| Toddington Rovers | 26 | 13 | 5 | 8 | 71 | 66 | 31 |
| Luton Social | 26 | 14 | 2 | 10 | 67 | 67 | 30 |
| Eaton Bray | 26 | 12 | 5 | 9 | 73 | 59 | 29 |
| Cockernhoe | 26 | 11 | 4 | 11 | 70 | 57 | 26 |
| Limbury Old Boys | 26 | 7 | 4 | 15 | 57 | 87 | 18 |
| Hitchin Road Old Boys | 26 | 4 | 6 | 16 | 44 | 105 | 14 |
| Rootes Sports | 26 | 4 | 5 | 17 | 32 | 89 | 13 |
| Houghton Rangers | 26 | 2 | 0 | 24 | 40 | 155 | 4 |
| Percival Athletic | 26 | 0 | 2 | 24 | 35 | 136 | 2 |

DIVISION I

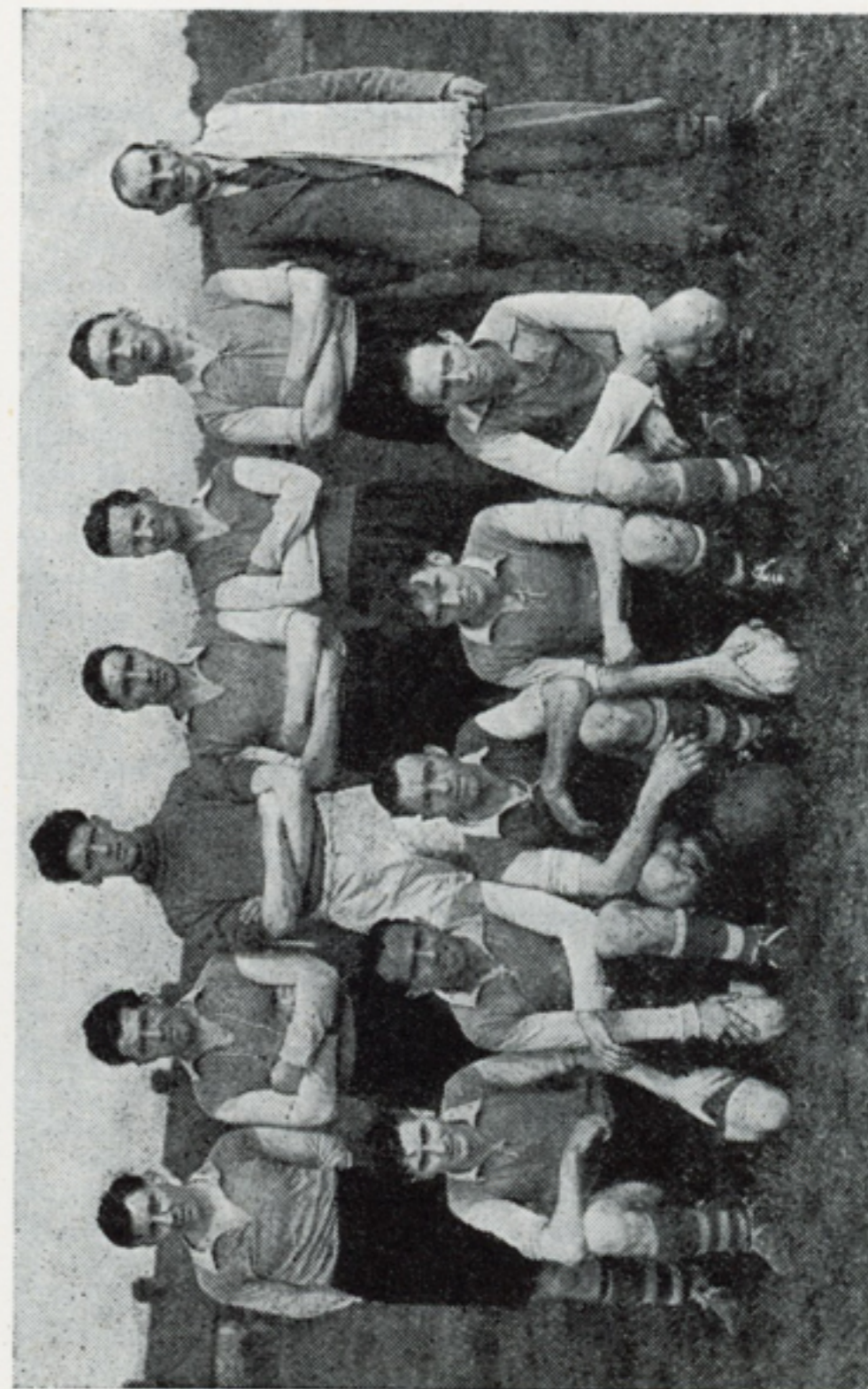
| | P. | W. | D. | L. | F. | A. | P. |
|-----------------------------|----|----|----|----|-----|-----|----|
| Caddington | 30 | 25 | 2 | 3 | 135 | 58 | 52 |
| Stopsley | 30 | 24 | 3 | 3 | 128 | 40 | 51 |
| Glendale | 30 | 22 | 3 | 5 | 146 | 56 | 47 |
| British Legion | 30 | 20 | 3 | 7 | 111 | 62 | 43 |
| Totternhoe | 30 | 19 | 2 | 9 | 108 | 74 | 40 |
| Laporte | 30 | 15 | 4 | 11 | 96 | 80 | 34 |
| Pioneer Corinthians | 30 | 15 | 3 | 12 | 89 | 86 | 33 |
| Kent's Athletic | 30 | 13 | 3 | 14 | 82 | 76 | 29 |
| Spandit Sports | 30 | 10 | 9 | 11 | 68 | 83 | 29 |
| Hitchin Road Old Boys | 30 | 13 | 0 | 17 | 96 | 113 | 26 |
| Luton Old Boys | 30 | 9 | 6 | 15 | 71 | 88 | 24 |
| Cockernhoe | 30 | 9 | 5 | 16 | 74 | 106 | 23 |
| Avondale Athletic | 30 | 7 | 2 | 21 | 74 | 118 | 16 |
| Farley Rangers | 30 | 6 | 2 | 22 | 51 | 97 | 14 |
| Luton Brewery | 30 | 5 | 4 | 21 | 57 | 125 | 14 |
| Norton Rangers | 30 | 2 | 1 | 27 | 39 | 163 | 5 |

| DIVISION II | | P. | W. | D. | L. | F. | A. | P. |
|-----------------------------|-------|----|----|----|----|-----|-----|----|
| Shillington Athletic "A" | | 30 | 25 | 4 | 1 | 117 | 31 | 54 |
| R.A.F. Association | | 30 | 24 | 2 | 4 | 106 | 43 | 50 |
| Sundon St. Mary's | | 30 | 22 | 3 | 5 | 93 | 59 | 47 |
| Bells Park | | 30 | 19 | 5 | 6 | 127 | 64 | 43 |
| Belle Vue Rangers | | 30 | 16 | 7 | 7 | 94 | 60 | 39 |
| Kensworth | | 30 | 15 | 6 | 9 | 92 | 63 | 36 |
| West Park | | 30 | 13 | 5 | 12 | 76 | 66 | 31 |
| Old Lutonians | | 30 | 13 | 4 | 13 | 93 | 88 | 30 |
| Harlington | | 30 | 13 | 3 | 14 | 81 | 57 | 29 |
| Warden Hill | | 30 | 10 | 5 | 15 | 66 | 88 | 25 |
| Skefko Athletic | | 30 | 11 | 2 | 17 | 65 | 81 | 24 |
| Electrolux | | 30 | 9 | 5 | 16 | 67 | 81 | 23 |
| Limbury Old Boys Reserves | | 30 | 10 | 2 | 18 | 65 | 107 | 22 |
| Amalgamated Tobacco Company | | 30 | 4 | 5 | 21 | 44 | 77 | 13 |
| Toddington Rovers "A" | | 30 | 3 | 2 | 25 | 28 | 162 | 8 |
| Luton United | | 30 | 1 | 4 | 25 | 42 | 129 | 6 |

| DIVISION III | | P. | W. | D. | L. | F. | A. | P. |
|-----------------------------|-------|----|----|----|----|-----|-----|----|
| Lilley Rangers | | 28 | 24 | 2 | 2 | 145 | 43 | 50 |
| Glendale | | 28 | 20 | 4 | 4 | 111 | 46 | 44 |
| Stopsley Reserves | | 28 | 20 | 3 | 5 | 127 | 48 | 43 |
| Caddington "B" | | 28 | 20 | 3 | 5 | 109 | 47 | 43 |
| Hockliffe | | 28 | 18 | 3 | 7 | 116 | 57 | 39 |
| Adamant Athletic | | 28 | 18 | 2 | 8 | 102 | 63 | 38 |
| Walcot Athletic | | 28 | 17 | 2 | 9 | 110 | 56 | 36 |
| Luton Social Reserves | | 28 | 13 | 2 | 13 | 97 | 85 | 28 |
| Boys' Brigade Old Boys | | 28 | 10 | 1 | 17 | 64 | 110 | 21 |
| Napier Sports "A" | | 28 | 8 | 3 | 17 | 69 | 111 | 19 |
| Alliance Foundry | | 28 | 5 | 6 | 17 | 64 | 117 | 16 |
| Barton Rovers | | 28 | 6 | 4 | 18 | 56 | 86 | 16 |
| Percival Athletic "A" | | 28 | 4 | 4 | 20 | 50 | 115 | 12 |
| R.A.F. Association Reserves | | 28 | 4 | 0 | 24 | 44 | 156 | 8 |
| Laporte Reserves | | 28 | 3 | 1 | 24 | 30 | 154 | 7 |

| DIVISION IV | | P. | W. | D. | L. | F. | A. | P. |
|-------------------------|-------|----|----|----|----|-----|-----|----|
| Beechwood Youth Club | | 30 | 25 | 2 | 3 | 178 | 42 | 52 |
| Hayward-Tyler | | 30 | 24 | 3 | 3 | 120 | 29 | 51 |
| Offley Rovers | | 30 | 21 | 4 | 5 | 160 | 59 | 46 |
| St. Andrew Robin Hoods | | 30 | 18 | 3 | 9 | 130 | 72 | 39 |
| Davis Athletic | | 30 | 16 | 4 | 10 | 119 | 78 | 36 |
| Sundon Park | | 30 | 16 | 2 | 12 | 83 | 88 | 34 |
| Totternhoe Reserves | | 30 | 13 | 7 | 10 | 88 | 87 | 33 |
| Bidwell | | 30 | 15 | 2 | 13 | 100 | 70 | 32 |
| Brown and Green | | 30 | 14 | 4 | 12 | 92 | 81 | 32 |
| Eaton Bray Reserves | | 30 | 13 | 2 | 15 | 67 | 109 | 28 |
| Rootes Sports Reserves | | 30 | 10 | 4 | 16 | 63 | 96 | 24 |
| Hexton | | 30 | 8 | 5 | 17 | 64 | 106 | 21 |
| Kensworth Reserves | | 30 | 8 | 4 | 18 | 50 | 97 | 20 |
| Luton Old Boys Reserves | | 30 | 9 | 2 | 19 | 59 | 107 | 20 |
| Villa Rovers | | 30 | 2 | 2 | 26 | 40 | 158 | 6 |
| Lea Valley | | 30 | 3 | 0 | 27 | 41 | 175 | 6 |

CADDINGTON WON EXCITING FIGHT



Although the issue was in doubt until the last week of the season, the championship of Division I of Luton and South Beds League was won by Caddington. Players and officials in this picture are, back row, left to right: B. Davis, L. Upton, R. Chapman, L. Kempson, T. Canfield, J. Pratt, S. Jefferies. Front row: J. Ginger, N. Thorne, C. Fullarton, A. Algar, D. Austin.

SOUTH MIDLANDS LEAGUE

President: Mr. J. A. Salsbury.

Chairman: Mr. A. G. Joyce. **Vice-Chairman:** Mr. F. A. Stanton.

Hon. Secretary and Treasurer:

Mr. F. C. Crain, 6, Chandos Road, Luton.

Telephone: Luton 4575.

PREMIER DIVISION

| | P. | W. | D. | L. | F. | A. | P. |
|------------------------------|----|----|----|----|-----|-----|----|
| Arlesey Town | 30 | 20 | 5 | 5 | 88 | 37 | 45 |
| Pear-tree Old Boys | 30 | 20 | 4 | 6 | 97 | 46 | 44 |
| Potton United | 30 | 20 | 3 | 7 | 100 | 53 | 43 |
| Shefford Town | 30 | 19 | 5 | 6 | 85 | 54 | 43 |
| Kent's Athletic | 30 | 19 | 4 | 7 | 100 | 37 | 42 |
| Wootton Blue Cross | 30 | 15 | 2 | 13 | 76 | 69 | 32 |
| Baldock Town | 30 | 15 | 1 | 14 | 89 | 77 | 31 |
| Bletchley Town | 30 | 12 | 5 | 13 | 85 | 59 | 29 |
| AC-Sphinx | 30 | 13 | 2 | 15 | 80 | 70 | 28 |
| Bedford Corinthians | 30 | 10 | 7 | 13 | 72 | 109 | 27 |
| Stony Stratford Sports | 30 | 9 | 7 | 14 | 68 | 78 | 25 |
| Harrold United | 30 | 9 | 6 | 15 | 54 | 89 | 24 |
| Letchworth Town | 30 | 9 | 4 | 17 | 62 | 92 | 22 |
| Amphill Town | 30 | 5 | 8 | 17 | 52 | 86 | 18 |
| Marston Shelton Rovers | 30 | 7 | 2 | 21 | 61 | 122 | 16 |
| Kempston Rovers | 30 | 3 | 5 | 22 | 35 | 126 | 11 |

DIVISION I

| | P. | W. | D. | L. | F. | A. | P. |
|------------------------------|----|----|----|----|-----|-----|----|
| Bedford Town "A" | 30 | 23 | 4 | 3 | 124 | 44 | 50 |
| Dunstable Town | 30 | 18 | 5 | 7 | 83 | 36 | 41 |
| Biggleswade Town | 30 | 16 | 9 | 5 | 89 | 50 | 41 |
| Cranfield United | 30 | 18 | 4 | 8 | 105 | 57 | 40 |
| Electrolux | 30 | 16 | 8 | 6 | 79 | 46 | 40 |
| Histon Institute | 30 | 16 | 5 | 9 | 88 | 59 | 37 |
| Waterlow's | 30 | 16 | 2 | 12 | 75 | 79 | 34 |
| Houghton Rangers | 30 | 14 | 4 | 12 | 91 | 90 | 32 |
| Langford | 30 | 12 | 4 | 14 | 69 | 75 | 28 |
| Vauxhall Motors | 30 | 11 | 6 | 13 | 57 | 66 | 28 |
| Bletchley Town | 30 | 8 | 8 | 14 | 51 | 80 | 24 |
| Queen's Works | 30 | 9 | 5 | 16 | 68 | 90 | 23 |
| St. Neots St. Mary's | 30 | 9 | 3 | 18 | 51 | 87 | 21 |
| Percival Athletic | 30 | 8 | 1 | 21 | 72 | 114 | 17 |
| Davis Athletic | 30 | 7 | 1 | 22 | 51 | 106 | 15 |
| Bedford St. Cuthbert's | 30 | 3 | 3 | 24 | 40 | 114 | 9 |

SOUTH MIDLANDS LEAGUE—Continued

DIVISION II

| | P. | W. | D. | L. | F. | A. | P. |
|-------------------------------|----|----|----|----|-----|-----|----|
| Arlesey Town | 26 | 22 | 3 | 1 | 131 | 26 | 47 |
| Stotfold | 26 | 20 | 3 | 3 | 98 | 28 | 43 |
| Skefko Athletic | 26 | 19 | 5 | 2 | 93 | 35 | 43 |
| Leighton United | 26 | 14 | 3 | 9 | 61 | 58 | 31 |
| Elstow Abbey | 26 | 13 | 3 | 10 | 82 | 66 | 29 |
| Wootton Blue Cross | 26 | 10 | 6 | 10 | 65 | 64 | 26 |
| Stewartby Works | 26 | 7 | 10 | 9 | 42 | 62 | 24 |
| Pear-tree Old Boys | 26 | 10 | 3 | 13 | 58 | 65 | 23 |
| AC-Sphinx | 26 | 9 | 3 | 14 | 68 | 81 | 21 |
| Marston Shelton Rovers | 26 | 6 | 7 | 13 | 59 | 97 | 19 |
| Baldock Town | 26 | 8 | 2 | 16 | 50 | 77 | 18 |
| Bedford North End | 26 | 5 | 5 | 16 | 49 | 74 | 15 |
| Bedford Queen's Works | 26 | 4 | 5 | 17 | 36 | 107 | 13 |
| Bedford Britannia Works | 26 | 4 | 4 | 18 | 40 | 92 | 12 |

Secretaries of Football Clubs in S. Beds—Contd. from p. 74

Stopsley.—C. W. Swain, 48, Abbotswood Road, Luton.

Territorial Army.—H. Brown, T.A. Social Club, Drill Hall, Old Bedford Road, Luton.

Toddington Rovers.—T. Walters, 9, Bradford Road, Toddington.

Totternhoe.—F. Lindgren, 56, Maidenbower Avenue, Dunstable.

Vauxhall Motors.—K. Edge, V.M. Recreation Club, Luton.

Villa Rovers.—D. Robb, 5, Bushmead Road, Luton.

Walcot Athletic.—H. G. Preece, 44, Bloomfield Avenue, Luton.

Waterlow's.—E. J. Bell, Waterlow and Son, Ltd., Dunstable.

Warden Hill Athletic.—H. W. Gathercole, 208, Barton Road, Streatley.

West Park.—P. Wesley, 12, Maidenhall Road, Luton.

Wilsden Athletic.—Miss E. Jeffries, 57, St. Lawrence's Avenue, Luton.

Woburn Athletic.—A. T. Cook, Crawley Road, Woburn, Bletchley, Bucks.

Luton, South Beds. and District Youth League

President: Lady Zia Wernher.

Chairman: Mr. S. Smith.

Vice-Chairman: Mr. R. R. Cox.

Executive Committee: Messrs. P. Coley, W. Barratt,
B. Palmer, D. Long.

Hon. Secretary and Treasurer: Mr. T. C. Potts,
82, St. Margaret's Avenue, Luton.

Hon. Referees' Secretary: Mr. R. R. Cox.

Hon. Press Secretary: Mr. A. E. Manley (Tel. Luton 5050).

LAST SEASON'S CHAMPIONS

14—18 Section: Langley Rangers.

14—16 Section: Vauxhall Motors.

14—18 SECTION

| | P. | W. | D. | L. | P. |
|------------------------------|----|----|----|----|----|
| Langley Rangers | 22 | 17 | 4 | 1 | 38 |
| Caddington | 22 | 18 | 1 | 3 | 37 |
| Limbury O.B. | 22 | 12 | 5 | 5 | 28 |
| Luton Hotspurs B.C. | 22 | 12 | 5 | 5 | 28 |
| Beechwood | 22 | 12 | 2 | 8 | 26 |
| Vauxhall Colts | 22 | 11 | 4 | 7 | 26 |
| Luton Argyle | 22 | 11 | 1 | 10 | 23 |
| St. Margaret's | 22 | 7 | 2 | 13 | 16 |
| Toddington Rovers | 22 | 6 | 2 | 14 | 14 |
| Luton Co-op | 22 | 7 | 0 | 15 | 14 |
| Old Bedford Road O.B.A. | 22 | 4 | 0 | 18 | 8 |
| High Town Y.C. | 22 | 1 | 3 | 18 | 5 |

14—16 SECTION

| | P. | W. | D. | L. | P. |
|-------------------------|----|----|----|----|----|
| Vauxhall Motors | 16 | 14 | 1 | 0 | 31 |
| Luton Argyle | 16 | 12 | 1 | 3 | 25 |
| Limbury O.B. | 16 | 11 | 0 | 5 | 22 |
| Poynters Road | 16 | 10 | 1 | 5 | 21 |
| Langley Rangers | 16 | 8 | 1 | 7 | 17 |
| High Town Y.C. | 16 | 6 | 0 | 10 | 12 |
| Old Bedford Road | 16 | 4 | 0 | 12 | 8 |
| Caddington | 16 | 3 | 0 | 11 | 8 |
| Kingston Athletic | 16 | 0 | 0 | 16 | 0 |

The Saturday Telegraph

GREEN-UN

Published during the Football Season

OFFERS THE BEST
SPORTING SERVICE
OF ANY PAPER
CIRCULATING IN
THIS AREA.

ALL THE SPORTS NEWS

Secretaries of Football Clubs in South Beds.

AC-Sphinx.—J. Malia, AC Sports and Social Club, Dunstable.
Adamant Athletic.—F. Webb, Welfare Officer, Adamant Engineering Works, Dallow Road, Luton.
Air Ministry, Dunstable.—K. Pollard, The Hostel, Meadway, Dunstable.
Alliance Foundry.—A. Plater, 36, Chaul End Road, Caddington, Luton.
A.P.C.M.—H. Prentice, A.P.C.M. Ltd., Dunstable.
Avondale Athletic.—W. Potter, 16, St. Mildred's Avenue, Luton.
Bagshawe's.—S. Haines, Bagshawe and Co., Ltd., Dunstable.
Barton Rovers.—A. E. Harris, 23, Mill Lane, Barton, Beds.
Barton Woodworking Co.—B. Hunt, 45, Wellington Street, Luton.
Bells Park.—J. White, 5, Hayes Close, Luton.
Belle Vue Rangers.—T. A. Phillips, 115, Westfield Road, Dunstable.
Betta Sports.—Miss E. Runagall, Heather Works, Eaton Bray.
Bidwell.—A. G. Fossey, 3, Dell Farm Cottages, Bidwell, Houghton Regis, Dunstable, Beds.
British Legion, Leagrave.—A. Sear, 71, Pembroke Avenue, Luton.
Brown & Green.—W. Payne, 18, Felmersham Road, Luton.
Caddington.—F. Dudley, 11, Folly Lane, Caddington, Luton.
Camden Motors.—Football Secretary, Camden Motors, Lake Street, Leighton Buzzard.
Chaul End Athletic.—E. R. Bangs, 2, St. Augustine's Avenue, Luton.
Cockernhoe.—E. Ensbury, 3, Mangrove Road, Cockernhoe, Luton.
Corinthians.—H. Metcalf, 3, Queen's Terrace, Church Street, Dunstable.
Crescent United.—N. Pearce, 52, Bristol Road, Luton.
Davis Athletic.—D. Fensome, Davis Gas Stove Co., Dallow Road, Luton.
Dagnall.—B. Thorne, 33, Studham Road, Dagnall, Beds.
Dunstable Met.—G. W. Wells, 66, Drovers Way, Dunstable.
Dunstable Town.—F. R. Nicholls, 69, Totternhoe Road, Dunstable.

Dunstable Town Reserves.—H. Stew, 20, First Avenue, Dunstable.
Electrolux.—F. Bryant, Electrolux Works, Luton.
Eaton Bray.—F. Line, Nursery Cottage, Eaton Bray.
"E" Division, Bedfordshire Police.—D./Con. C. W. Jackson, Police Station, Luton.
English Electric.—R. W. Stevens, The Airport, Luton.
Flitton & Greenfield.—R. Sarrington, 25, Mill Lane, Greenfield, Beds.
Foundry Equipment.—P. E. Ryan, Foundry Equipment, Linslade.
Glendale.—A. Lightfoot, 35, Ferndale Road, Luton.
Harlington.—A. E. Hind, 71, Barton Road, Harlington, Beds.
Hayward-Tyler.—A. Randall, Hayward-Tyler Sports Club, Luton.
Heath United.—K. A. Rolls, 12, Linslade Road, Heath and Reach.
Hitchin Road Old Boys.—A. R. Brown, 1, Ridgway Road, Luton.
Hockliffe.—R. Barker, 1, Watling Court, Dunstable.
Horseshoe Athletic.—A. Gallacher, 22, Victoria Street, Luton.
Houghton Rangers.—E. Nye, 3, Heywood Drive, Luton.
Johanssons.—A. Tegg, Cavendish Street, Markyate, Dunstable.
Kensworth.—C. Iles, Lesley Nurseries, Kensworth.
Kent's Athletic.—H. Hounslow, 22, Grosvenor Road, Luton.
Laporte's.—R. S. Warner, Laporte Chemicals, Luton.
Lea Valley.—A. Bowker, 87, Claremont Road, Luton.
Leighton Rangers.—T. Cherry, 27, Lake Street, Leighton Buzzard.
Leighton United.—R. C. Hutchinson, 60, New Road, Linslade.
Limbury.—K. Owens, 35, Solway Road, Luton.
Limbury Old Boys.—R. R. Knights, 44, Marsh Road, Luton.
Linslade.—C. Kempster, 86, Soulbury Road, Linslade.
Lilley Rangers.—D. W. Payne, 5, Hexton Road, Lilley, Hitchin.
London Transport.—L. Holding, 18, Heathfield Close, Caddington, Luton.
Lumoco Sports.—R. Smith, 129, Albert Road, Luton.
Luton Amateur.—J. Williams, Davis Gas Stove Co., Ltd., Dallow Road, Luton.

Luton Argyle Old Boys.—F. Claridge, 14, Darley Road, Breachwood Green, Hitchin.

Luton Brewery.—A. Toms, 19, Park Street West, Luton.

Luton Clarence.—J. Beauchamp, 14, Thirlstone Road, Luton.

Luton Co-op. Y.C.—J. Devlin, 214, Selbourne Road, Luton.

Luton Social.—G. Templeton, 450, Dunstable Road, Luton.

Luton Old Boys.—C. Stockbridge, 98, Park Street, Luton.

Luton Road Rangers.—L. Ryan, 203, Luton Road, Dunstable.

Luton United.—R. A. Tompkins, 31, Cardiff Road, Luton.

Luton Wednesday.—J. Ambridge, 5, Cromwell Road, Luton.

Milton Bryan.—T. Mead, "Red Lion," Milton Bryan.

Napier Sports.—F. P. Sanderson, Welfare Officer, Napiers, Airport, Luton.

Norton Rangers.—F. W. J. Burnham, 25, Old Bedford Road, Luton.

Offley Rovers.—D. Day, 5, School Lane, Offley, Hitchin.

Old Lutonians.—G. East, 43, Hazelbury Crescent, Luton.

Old Beechillians.—D. Robbins, 44, Beechwood Road, Luton.

Percival Athletic.—L. Kenrick, Percival Aircraft, Airport, Luton.

Pioneer Corinthians.—H. Metcalfe, 3, Queen's Terrace, Church Street, Dunstable.

R.A.F.A.—I. Wesley, 90, Argyll Avenue, Luton.

R.A.F. Leighton Buzzard.—W/O. H. Baker, 23 Group (H.Q.), Leighton Buzzard.

Rootes Sports.—J. Hoar, Commer Cars, Luton.

Royal Naval O.C.—J. Hayward, 50, Collingdon Street, Luton.

Shillington Athletic.—R. M. Head, 39, High Road, Shillington.

Silsoe.—L. West, 27, Church Road, Silsoe.

Skefko Athletic.—F. King, Skefko Works, Leagrave Road, Luton.

Spandit Sports.—R. Quinn, 34, Wordsworth Road, Luton.

Stanbridge and Tilsworth.—G. Orriss, 5, Pedders Lane, Stanbridge.

Stipers Hill Sports.—L. Leach, 89, Beecroft Way, Dunstable.

Streatley.—B. Currington, 231 Sharpenhoe Road, Streatley.

St. Andrew's Robin Hoods.—H. Hawkins, 79, Front Street, Slip End, Luton.

Sundon Park.—K. Froud, 22, Whitefield Avenue, Sundon Park, Luton.

Sundon St. Mary's.—G. Billington, 27, Streatley Road, Sundon.

Continued on page 69

Secretaries of Youth Football Clubs in South Beds.

Beechwood Y.C.—R. H. Thompson, 28, Pirton Road, Leagrave, Luton.

Caddington Y.C.—V. S. Banks, 112, Mancroft Road, Caddington, Luton.

Dunstable N.E.—E. Chubb, 97, Beecroft Way, Dunstable.

Hart Hill Athletic.—S. Titmus, 31, Icknield Road, Luton.

High Town Y.C.—P. Moody, 65, Trinity Road, Luton.

Houghton Juniors.—G. Nye, 23, Chalton Road, Houghton Regis.

Kingston Athletic.—T. Pooley, 12, Selbourne Road, Luton.

Langley Rangers.—E. Kingscote, 133, Blundell Road, Luton.

Limbury Old Boys.—R. R. Knights, 44, Marsh Road, Luton.

Luton Argyle.—N. R. Robinson, 15, Wimborne Road, Luton.

Luton Co-op Y.C.—A. Donald, 41, Alder Crescent, Luton.

Luton Hotspur.—R. E. Parkinson, 10, Runley Road, Luton.

Luton Town Youth XI.—P. Coley, 70-72, Kenilworth Road, Luton.

Marina Rovers.—L. Evans, 4, Canesworde Road, Dunstable.

Old Bedford Road O.B.A.—J. Taylor, 4, Winch Street, Luton.

Pioneer Boys' Club.—K. Cowley, 32, Benning Avenue, Dunstable.

Poynters Road B.C.—G. D. Wilkinson, 84, Poynters Road, Dunstable.

St. Andrew's Robin Hood Y.C.—H. Hawkins, 79, Front Street, Slip End, Luton.

St. Margaret's Y.C.—M. King, 13, St. Augustine's Avenue, Luton.

Stanbridge and Tilsworth.—J. Rowlands, 4, Council Houses, Tilsworth, Leighton Buzzard.

Toddington Rovers A.F.C.—T. Walters, 9, Bradford Road, Toddington.

Vauxhall Motors.—R. A. Garrett, V.M. Recreation Club, Kimpton Road, Luton.

Waterlow Road.—E. Blake, 46, Worthington Road, Dunstable.

West Park.—J. Anson, 14, Dunstable Court, Luton.

ADDRESSES OF REFEREES IN SOUTH BEDS.

South Beds Society Officials: President, Mr. Henry Pearce; Chairman, Mr. F. E. Hawkes; Vice-chairman, Mr. R. C. Carter; Hon. Secretary and Treasurer, Mr. F. S. G. Moore,

35, Cowridge Road, Luton.

Ambridge, A. S., 14, Front Street, Slip End, Luton.

Ansell, W. A., 25, Cardigan Street, Luton.

Ash, D., 39, Hollybush Road, Luton.

Barron, V., 43, Pomfret Avenue, Luton.

Burton, J., 17, Tennyson Road, Luton.

Beazley, K. G., 65, Totternhoe Road, Dunstable.

Borrowman, A. H., 88, Farley Hill, Luton.

Brendish, D. J., 20, Pomfret Avenue, Luton.

Brewer, A. L., 113, Chiltern Road, Dunstable.

Brown, T., 48, Burnham Road, Luton.

Bone, F. J., 92, Russell Rise, Luton.

Burch, B. T., 37, Hollybush Road, Luton.

Buggs, L. H., "Bryn Bedw," Filmer Road, Luton.

Bywaters, A. H., 28, Beech Road, Luton.

Campbell, J. H., 24, Chobham Street, Luton.

Capper, H. C., 285, Ashcroft Road, Luton.

Cain, J. G., 11, Dudley Street, Luton.

Carter, S. R., 158, Milton Road, Luton.

Cheshire, H. L., 161, Chiltern Road, Dunstable.

Childs, R. J., 168, Connaught Road, Luton.

Clay, D. E., 16, Mayfield Road, Stopsley, Luton.

Cox, R. R., 49, St. Paul's Road, Luton.

Cullis, E., 8, Front Street, Slip End, Luton.

Davis, T. J., King's Head Hotel, Stewkley, Leighton Buzzard.

Davis, R., 126, Somerset Avenue, Luton.

Davies, E., 11, Dunstable Close, Luton.

Edmonds, E. A., 12, Whitecroft Road, Luton.

Folkes, H. A., 67, Hazelbury Crescent, Luton.

Foster, H. J., 43, St. Winifred's Avenue, Luton.

Gale, A. E., 29, Bradford Road, Toddington.

Galway, J., 22, Pirton Road, Leagrave, Luton.

Garside, N., 112, Richmond Hill, Luton.

Gibbard, R. B., 60, Harcourt Street, Luton.

Hatton, G. E., 40, Hart Lane, Luton.

Hill, H., 43, Lothair Road, Luton.

Hagger, A., 32, Burnham Road, Luton.

Hodgson, H., 410, Leagrave Road, Luton.

Howes, F. M., 32, Luton Road, Dunstable.

Hewison, H. G., 89, Chester Avenue, Luton.

Higgs, W. C., 36, Mansfield Road, Luton.

Hackett, J., 39, Manton Drive, Luton.

Holes, S. J., 81, Highbury Road, Luton.

Hope, T. E., 29, Atherstone Road, Luton.

Howard, L., 72, Hampton Road, Luton.

Hunt, A. T., 12, Sundon Park Road, Luton.

Indge, R., 80, Alder Crescent, Luton.

Izzard, C. T., 1, Eaton Valley Road, Luton.

Jeffs, R. C., 28, Arundel Road, Luton.

Jones, L., 2, Tavistock Street, Luton.

Jones, T., 70, Abbots Wood Road, Luton.

Joyce, A. G., 395, Dunstable Road, Luton.

Lindgren, F. C., 48, Downside, Dunstable.

Lowther, R. A., 10, Devon Road, Luton.

Martin, A. J., 26, Chesford Road, Luton.

Mills, F. T., 23, Durham Road, Luton.

Moore, F. S. G., 35, Cowridge Crescent, Luton.

Morley, F. C., 32, Woodbury Hill, Luton.

Moulster, S., 1, Portland Road, Luton.

Oliver, H. C., 17, Mayne Avenue, Leagrave, Luton.

Parrott, H. W., 57, Waterlow Road, Dunstable.

Pearce, B. A., 78, Highbury Road, Luton.

Pearce, F., 188, Stockingstone Road, Luton.

Randall, J., 59, Stockingstone Road, Luton.

Rogers, G., 42, Holland Road, Luton.

Read, W., 158, Cowper Street, Luton.

Reed, J. E., 5, Bank Close, Leagrave, Luton.

Renwick, W. F., 3, Florence Avenue, Sundon Park, Luton.

Setchell, B. S., 175, Selbourne Road, Luton.

Ratcliffe, H. J., 20, Cowridge Crescent, Luton.

Stevens, D. W., 110, North Street, Luton.

Shillingford, F. C., 120, Baker Street, Luton.

Simpson, W. S., 18, Fairford Avenue, Luton.

Smith, C. W., 12, Stanford Road, Luton.

Swain, A. E., 803, Dunstable Road, Luton.

Tillman, W. F., 95, Westfield Road, Dunstable.

Taylor, E. G. R., 6, Winch Street, Luton.

Thomas, W., 142, Selbourne Road, Luton.

Thurley, E. N., 82, Farringdon Road, Luton.

Toyer, R. G., 29, Cannon Lane, Stopsley, Luton.

Turner, B. S., 33, Pondwicks Road, Luton.

Wallis, A. E., 1, Bidwell Hill, Houghton Regis.

Walters, W. J., 132, Chester Avenue, Luton.

Waller, P., 71, St. Monica's Avenue, Luton.

Wanstill, J., 5, Blythe Place, Luton.

Wells, D. F. C., 16, Elmore Road, Luton.

Weston, D. E., 43, Waterloo Road, Leighton Buzzard.

Wilkinson, J. C., 120, Stapleford Road, Luton.

Williamson, K., 74, Chester Avenue, Luton.

Wright, S. A., 22, St. Monica's Avenue, Luton.

Wright, A. D., 14, Tower Road, Luton.

LEAGUE TABLES—Season 1951-52

DIVISION I

| | P. | W. | D. | L. | F. | A. | P. |
|-------------------------|----|----|----|----|----|----|----|
| Manchester United | 42 | 23 | 11 | 8 | 95 | 52 | 57 |
| Tottenham Hotspur | 42 | 22 | 9 | 11 | 76 | 51 | 53 |
| Arsenal | 42 | 21 | 11 | 10 | 80 | 61 | 53 |
| Portsmouth | 42 | 20 | 8 | 14 | 68 | 58 | 48 |
| Bolton Wanderers | 42 | 19 | 10 | 13 | 65 | 61 | 48 |
| Aston Villa | 42 | 19 | 9 | 14 | 79 | 70 | 47 |
| Preston North End | 42 | 17 | 12 | 13 | 74 | 54 | 46 |
| Newcastle United | 42 | 18 | 9 | 15 | 98 | 73 | 45 |
| Blackpool | 42 | 18 | 9 | 15 | 64 | 64 | 45 |
| Charlton Athletic | 42 | 17 | 10 | 15 | 68 | 63 | 44 |
| Liverpool | 42 | 12 | 19 | 11 | 57 | 61 | 43 |
| Sunderland | 42 | 15 | 12 | 15 | 70 | 61 | 42 |
| West Bromwich Albion | 42 | 14 | 13 | 15 | 74 | 77 | 41 |
| Burnley | 42 | 15 | 10 | 17 | 56 | 63 | 40 |
| Manchester City | 42 | 13 | 13 | 16 | 58 | 61 | 39 |
| Wolverhampton Wanderers | 42 | 12 | 14 | 16 | 73 | 73 | 38 |
| Derby County | 42 | 15 | 7 | 20 | 63 | 80 | 37 |
| Chelsea | 42 | 14 | 8 | 20 | 52 | 72 | 36 |
| Middlesbrough | 42 | 15 | 6 | 21 | 64 | 88 | 36 |
| Stoke City | 42 | 12 | 7 | 23 | 49 | 88 | 31 |
| Huddersfield Town | 42 | 10 | 8 | 24 | 49 | 82 | 28 |
| Fulham | 42 | 8 | 11 | 23 | 58 | 77 | 27 |

DIVISION II

| | | | | | | | |
|----------------------|----|----|----|----|-----|----|----|
| Sheffield Wednesday | 42 | 21 | 11 | 10 | 100 | 66 | 53 |
| Cardiff City | 42 | 20 | 11 | 11 | 72 | 54 | 51 |
| Birmingham City | 42 | 21 | 9 | 12 | 67 | 56 | 51 |
| Nottingham Forest | 42 | 18 | 13 | 11 | 77 | 62 | 49 |
| Leicester City | 42 | 19 | 9 | 14 | 78 | 64 | 47 |
| Leeds United | 42 | 18 | 11 | 13 | 59 | 57 | 47 |
| Everton | 42 | 17 | 10 | 15 | 64 | 58 | 44 |
| Luton Town | 42 | 16 | 12 | 14 | 77 | 78 | 44 |
| Rotherham United | 42 | 17 | 8 | 17 | 73 | 71 | 42 |
| Brentford | 42 | 15 | 12 | 15 | 54 | 55 | 42 |
| Sheffield United | 42 | 18 | 5 | 19 | 90 | 76 | 41 |
| West Ham United | 42 | 15 | 11 | 16 | 67 | 77 | 41 |
| Southampton | 42 | 15 | 11 | 16 | 61 | 73 | 41 |
| Blackburn Rovers | 42 | 17 | 6 | 19 | 54 | 63 | 40 |
| Notts County | 42 | 16 | 7 | 19 | 71 | 68 | 39 |
| Doncaster Rovers | 42 | 13 | 12 | 17 | 55 | 60 | 38 |
| Bury | 42 | 15 | 7 | 20 | 64 | 68 | 37 |
| Hull City | 42 | 13 | 11 | 18 | 60 | 70 | 37 |
| Swansea Town | 42 | 12 | 12 | 18 | 72 | 76 | 36 |
| Barnsley | 42 | 11 | 14 | 17 | 59 | 72 | 36 |
| Coventry City | 42 | 14 | 6 | 22 | 59 | 82 | 34 |
| Queen's Park Rangers | 42 | 11 | 12 | 19 | 52 | 81 | 34 |

LEAGUE TABLES, 1951-52

DIVISION III (SOUTH)

| | P. | W. | D. | L. | F. | A. | P. |
|-------------------------------|----|----|----|----|-----|----|----|
| Plymouth Argyle | 46 | 29 | 8 | 9 | 107 | 53 | 66 |
| Reading | 46 | 29 | 3 | 14 | 112 | 60 | 61 |
| Norwich City | 46 | 26 | 9 | 11 | 89 | 50 | 61 |
| Brighton and Hove Albion | 46 | 24 | 10 | 12 | 87 | 63 | 58 |
| Millwall | 46 | 23 | 12 | 11 | 74 | 53 | 58 |
| Newport County | 46 | 21 | 12 | 13 | 77 | 76 | 54 |
| Bristol Rovers | 46 | 20 | 12 | 14 | 89 | 53 | 52 |
| Northampton Town | 46 | 22 | 5 | 19 | 93 | 74 | 49 |
| Southend United | 46 | 19 | 10 | 17 | 75 | 66 | 48 |
| Colchester United | 46 | 17 | 12 | 17 | 56 | 77 | 46 |
| Aldershot | 46 | 18 | 8 | 20 | 78 | 89 | 44 |
| Torquay United | 46 | 17 | 10 | 19 | 86 | 98 | 44 |
| Port Vale | 46 | 14 | 15 | 17 | 50 | 66 | 43 |
| Bournemouth and Boscombe Utd. | 46 | 16 | 10 | 20 | 68 | 75 | 42 |
| Bristol City | 46 | 15 | 12 | 19 | 58 | 69 | 42 |
| Swindon Town | 46 | 14 | 14 | 18 | 51 | 68 | 42 |
| Ipswich Town | 46 | 16 | 9 | 21 | 63 | 74 | 41 |
| Leyton Orient | 46 | 16 | 9 | 21 | 55 | 65 | 41 |
| Crystal Palace | 46 | 15 | 9 | 22 | 61 | 80 | 39 |
| Shrewsbury Town | 46 | 13 | 10 | 23 | 62 | 86 | 36 |
| Watford | 46 | 13 | 10 | 23 | 57 | 81 | 36 |
| Gillingham | 46 | 11 | 13 | 22 | 71 | 81 | 35 |
| Exeter City | 46 | 13 | 9 | 24 | 65 | 86 | 35 |
| Walsall | 46 | 13 | 5 | 28 | 55 | 94 | 31 |

DIVISION III (NORTH)

| | | | | | | | |
|--------------------|----|----|----|----|-----|-----|----|
| Lincoln City | 46 | 30 | 9 | 7 | 121 | 52 | 69 |
| Grimsby Town | 46 | 29 | 8 | 9 | 96 | 45 | 66 |
| Stockport County | 46 | 23 | 13 | 10 | 74 | 40 | 59 |
| Oldham Athletic | 46 | 24 | 9 | 13 | 90 | 61 | 57 |
| Gateshead | 46 | 21 | 11 | 14 | 66 | 49 | 53 |
| Mansfield Town | 46 | 22 | 8 | 16 | 73 | 60 | 52 |
| Carlisle United | 46 | 19 | 13 | 14 | 62 | 57 | 51 |
| Hartlepool United | 46 | 21 | 8 | 17 | 71 | 45 | 50 |
| Bradford | 46 | 19 | 12 | 15 | 74 | 64 | 50 |
| York City | 46 | 18 | 13 | 15 | 73 | 52 | 49 |
| Tranmere Rovers | 46 | 21 | 6 | 19 | 76 | 71 | 48 |
| Barrow | 46 | 17 | 12 | 17 | 57 | 61 | 46 |
| Chesterfield | 46 | 17 | 11 | 18 | 65 | 66 | 45 |
| Scunthorpe | 46 | 14 | 16 | 16 | 65 | 74 | 44 |
| Bradford City | 46 | 16 | 10 | 20 | 61 | 68 | 42 |
| Crewe Alexandra | 46 | 17 | 8 | 21 | 63 | 82 | 42 |
| Southport | 46 | 15 | 11 | 20 | 53 | 71 | 41 |
| Wrexham | 46 | 15 | 9 | 22 | 63 | 73 | 39 |
| Chester | 46 | 15 | 9 | 22 | 72 | 85 | 39 |
| Halifax Town | 46 | 14 | 7 | 25 | 61 | 97 | 35 |
| Rochdale | 46 | 11 | 13 | 22 | 47 | 79 | 35 |
| Accrington Stanley | 46 | 10 | 12 | 24 | 61 | 95 | 32 |
| Darlington | 46 | 11 | 9 | 26 | 64 | 103 | 31 |
| Workington Town | 46 | 11 | 7 | 28 | 50 | 91 | 29 |

LEAGUE TABLES, 1951-52—Continued

LONDON COMBINATION LEAGUE

SECTION "B"

| | P. | W. | D. | L. | F. | A. | P. |
|--------------------------------|-----------|-----------|----------|-----------|-----------|-----------|-----------|
| Tottenham Hotspur | 30 | 22 | 2 | 6 | 69 | 27 | 46 |
| Arsenal | 30 | 18 | 7 | 5 | 70 | 32 | 43 |
| Plymouth Argyle | 30 | 18 | 3 | 9 | 76 | 56 | 39 |
| Southampton | 30 | 16 | 6 | 8 | 60 | 44 | 38 |
| West Ham United | 30 | 15 | 6 | 9 | 64 | 46 | 36 |
| Charlton Athletic | 30 | 16 | 4 | 10 | 73 | 56 | 36 |
| Norwich City | 30 | 15 | 1 | 14 | 49 | 50 | 31 |
| Portsmouth | 30 | 14 | 2 | 14 | 64 | 63 | 30 |
| Bournemouth and Boscombe Utd. | 30 | 12 | 3 | 15 | 45 | 45 | 27 |
| Ipswich Town | 30 | 12 | 3 | 15 | 47 | 52 | 27 |
| Luton Town | 30 | 10 | 7 | 13 | 58 | 70 | 27 |
| Watford | 30 | 9 | 6 | 15 | 35 | 55 | 24 |
| Brighton and Hove Albion | 30 | 8 | 8 | 14 | 45 | 68 | 24 |
| Bristol Rovers | 30 | 8 | 4 | 18 | 53 | 67 | 20 |
| Bristol City | 30 | 9 | 1 | 20 | 36 | 66 | 19 |
| Swindon Town | 30 | 3 | 7 | 20 | 41 | 88 | 13 |

LONDON COMBINATION CUP

SECTION III

| | P. | W. | D. | L. | F. | A. | P. |
|-------------------------|-----------|----------|----------|----------|-----------|-----------|-----------|
| Leicester City | 14 | 7 | 5 | 2 | 26 | 17 | 19 |
| Norwich City | 14 | 7 | 4 | 3 | 26 | 18 | 18 |
| Ipswich Town | 14 | 5 | 4 | 5 | 18 | 20 | 14 |
| Birmingham City | 14 | 4 | 6 | 4 | 24 | 24 | 14 |
| Northampton Town | 14 | 6 | 2 | 6 | 17 | 18 | 14 |
| Luton Town | 14 | 3 | 7 | 4 | 31 | 28 | 13 |
| Watford | 14 | 5 | 2 | 7 | 14 | 23 | 12 |
| Coventry City | 14 | 3 | 2 | 9 | 11 | 19 | 8 |

METROPOLITAN LEAGUE

| | P. | W. | D. | L. | F. | A. | P. |
|------------------------------------|-----------|-----------|----------|-----------|-----------|-----------|-----------|
| Horsham | 26 | 17 | 6 | 3 | 75 | 30 | 40 |
| Tonbridge | 26 | 16 | 7 | 3 | 90 | 34 | 39 |
| Tottenham Hotspur | 26 | 15 | 3 | 8 | 74 | 47 | 33 |
| Headington United | 26 | 13 | 5 | 8 | 72 | 58 | 31 |
| Skyways | 26 | 14 | 1 | 11 | 54 | 56 | 29 |
| Windsor and Eton | 26 | 12 | 4 | 10 | 76 | 58 | 28 |
| Vickers Armstrong | 26 | 9 | 8 | 9 | 64 | 72 | 26 |
| Luton Town "A" | 26 | 12 | 1 | 13 | 83 | 79 | 25 |
| Hastings United | 26 | 9 | 7 | 10 | 49 | 57 | 25 |
| Dunstable Town | 26 | 11 | 2 | 13 | 48 | 66 | 24 |
| Twickenham | 26 | 8 | 5 | 13 | 53 | 71 | 21 |
| Brighton and Hove Albion "A" | 26 | 8 | 3 | 15 | 54 | 72 | 19 |
| Millwall | 26 | 5 | 6 | 15 | 49 | 79 | 16 |
| Callenders Athletic | 26 | 3 | 2 | 21 | 32 | 94 | 8 |



and you will certainly get a
"kick" and enjoyment with a

WHITBREAD'S

win, lose or draw, you are on
a certainty when you visit the
Halfway where you can get
Whitbread's celebrated Ales
and Stouts and a fine choice of
Wines and Spirits at reason-
able prices.

For 34 years CREASEY quality, service, civility

THE NEW

HALFWAY HOUSE


DUNSTABLE'S FREE WINE & SPIRIT HOUSE

Phone D'ble 80

Prop. W. CREASEY

MUSIC and RECORDS

The
CENTRE of the FIELD



FARMERS
LUTON

for
HOME ENTERTAINMENT

RADIO and T/V