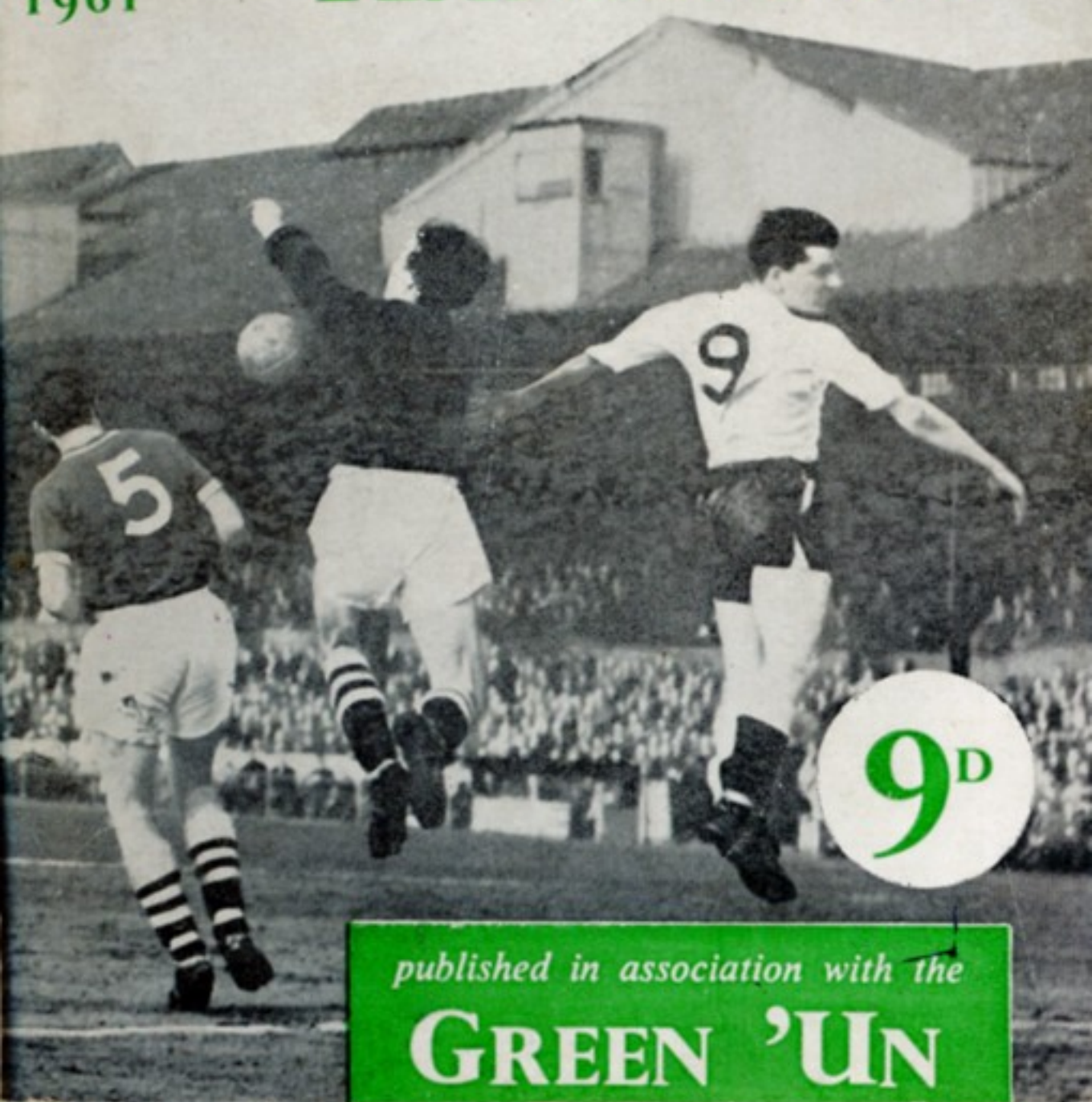


THE LUTON NEWS

**FOOTBALL**

1960  
1961

**HANDBOOK**



**9<sup>D</sup>**

*published in association with the*

**GREEN 'UN**



# LILLYWHITE'S

are not in league with anyone, but they make every endeavour to do their best for all their followers who require

T I M B E R  
H A R D B O A R D  
P L Y W O O D  
D O O R S , G A T E S  
etc.

Depots : Leagrave Rd., Luton  
Stanton Rd., Luton  
High St., Houghton Regis

Head Office :

39 CASTLE ST., LUTON  
Phone 6282-3-4

## MORE GOALS MUST BE THE AIM THIS TIME

This time last year, we were saying that the previous season was the most memorable in the long history of the Town club because of their great run in the F.A. Cup.

Now, we look back on quite the most disastrous season of all in that, not only did the first team lose their Division I status, but the Reserves were relegated to Division II of the Football Combination.

In each case, the inability to score goals at all prolifically was the basic reason for the failure and a late attempt to bolster up the attack by paying £12,500 to Wolves for Joe McBride came too late to turn the tide.

If the Town could have bought themselves out of trouble, they would have done so, but endless travelling, particularly in Scotland and even a biggest-ever offer failed to secure them the outside-left they so badly needed to balance their attack.

Now, they hope they have done this by signing the Scottish International left winger, Stuart Imlach, from Nottingham Forest and the front line seems to carry more potential than was the case in the early part of last season when centre-forward was another serious problem.

There were times when the team had some shocking bad luck in front of goal which made all the difference between precious points and narrow defeat and, for a time,



justifiably I feel, there was the feeling that the luck must turn.

In the event, it did not, and the result was that players lost confidence in their own ability in front of goal and the management were forced to the conclusion that the attack just was not good enough.

Now, after five years in the top flight, Second Division football is back at Kenilworth-road again and it may well be that this season presents the Town with their best chance of regaining their status, as Aston Villa did at the first attempt last campaign.

Much depends on the ability of the attack to score more freely and take some of the weight off the defence which was faced with a continuous struggle last campaign when, such was the lack of punch, that the conceding of even a single goal often seemed a major catastrophe.

As the Town know from long experience, the Second Division is a hard school, perhaps the hardest of the lot, and it is bound to be difficult to get clear of the ruck.

Much will depend on what sort of a start the team can achieve and they begin with four matches away out of the first six, so they quickly face a testing period.

Unfortunately, a combination of circumstances including a disagreement on policy led to the resignation from the managership of Sid Owen, who had given the club such great service as a player and captain.

Unluckily for him in his first season after having hung up his boots, things just refused to go smoothly on the field. At the time, his resignation and his reasons for it, provided a sensation which, like everything else of that sort, soon died down.

Then, after considering several offers, Owen accepted the appointment of chief coach to Leeds United who, by a coincidence, were relegated with the Town.

With the reorganisation of the Leeds staff, former Luton assistant trainer, Les Cocker, was appointed their head trainer, which left the Town with the problem of finding not only a team manager, but an assistant trainer-coach.

After several years without a severe pruning of the playing staff, the Board made a drastic cut of about 25 per cent and it was mainly on the younger players who had been with the club some years and not made the hoped-for progress that the axe fell.

More than that, the coaching staff was pruned, which meant the end of an association with the club of many years for such well-known former players as Wally Shanks and Bud Aherne.

Obviously, the Board arrived at the conclusion that their staff was unweildy and they have attempted to streamline it.

Ironically, perhaps, in view of the fact that the Town were relegated, all the fans, apart from season ticket-holders, will have to pay more for their football this season, following the League's decision to increase the minimum by sixpence.

Whether this will have any appreciable effect remains to be seen, but the pre-season demand for season tickets does not suggest that it will.

Bookings were surprisingly good in the circumstances and were nearly on a par with those of 12 months ago.

CHILTERN.





**SAM BARTRAM** (Team Manager). Appointed just over a month before the start of the season to succeed Sid Owen, who resigned in April. In making their choice, the Town Directors took much time and trouble and, in Bartram, they have the combination of a man with a great name as a player in the game and one who has had a solid grounding in managerial duties in the Third and Fourth Divisions with York City. As a player, he was a one-club man, spending 22 years at The Valley with Charlton Athletic and being regularly in their goal for most of the time. Unfortunately for him, he was at his peak during a vintage time for goalkeepers and did not receive the England cap he deserved. Consolation came in the shape of war-time International appearances, tours to South Africa and Australia, and a Cup-winners' medal with Charlton in 1947. Born in Co. Durham, he joined Charlton straight from junior football with Boldon Colliery.

**TOM BRICE.** Since the section of this handbook containing his biography was printed, has come the unhappy news that, as a result of a knee injury received in the last match of the season, Brice has been advised by a specialist to play no more football. So, a promising career has been cut short.



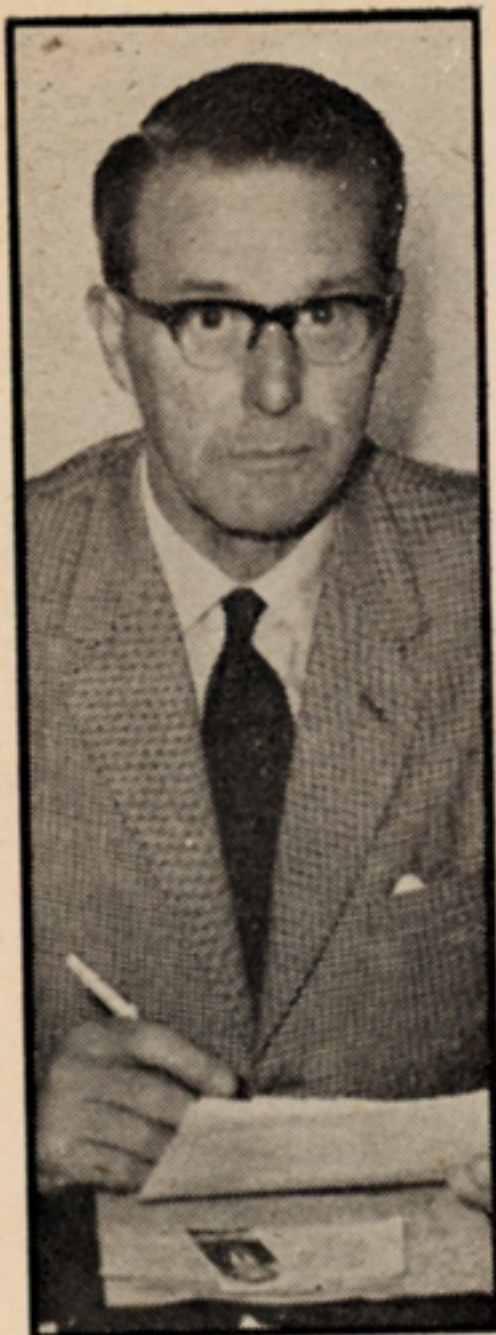
**WALLY FIELDING** (Assistant Trainer-Coach). A Londoner who played for Charlton Athletic as an amateur, he went north to Everton for his first professional chance and stayed with them for a number of years before, eventually, moving to Southport as player-manager. Luton players, and probably many of the fans, remember him as a clever ball playing inside-forward who commanded a regular place at Goodison Park and, several times, schemed the Town to defeat. Does not come completely among strangers because George Cummins was a Goodison club-mate of his.

**LESLIE SPENCER** (inside-forward). In paying a four-figure fee to Rochdale for this player, the Town seem to have done a shrewd stroke of business in building up their reserve strength because Spencer can play in all the forward positions with the exception of centre-forward. Born in Manchester, he went to Rochdale from junior football two-and-a-half years ago and made 36 Fourth Division appearances, scoring 10 goals last season.



25/3/61  
GOALS: 1 THROUGH INJURY  
SPENCER HAS GIVEN UP FOOTBALL





**GEORGE MARTIN** (Chief Scout). Came back into football in this capacity after having been out of the game for some years. A clever footballer before the war, he joined the Town after having given distinguished service to Hamilton, Hull City, Everton and Middlesbrough and was here when promotion was gained from the Third Division. When his playing career ended, he was put in charge of the Colts team and made coach and, later, became manager. Left the club in 1947 to take charge at Newcastle and after just over three years there, was appointed manager of Aston Villa. When that job ended, he went into business in Liverpool where he lived for so long and finally returned to Luton to work for a Luton firm. When he was with Everton, he gained First and Second Division championship medals and he is one of the best known figures in the game.

**THE GREEN 'UN EVERY SATURDAY  
FOR CHILTERN'S COMMENTARY**

## MEN WHO HAVE PLAYED FOR LUTON

1919-20: P. Summers, R. Abbott, H. Whitehead, J. R. Elvey, J. Dunn, F. Hawkes, F. Hull; R. M. Hawkes, T. Urwin, J. Rutherford, T. Parker, J. Brandham, G. Bowler, P. Stewart; S. Hoar, W. J. Grimes, A. Roe, R. Tomlinson, D. Williams, E. Simms, L. Bookman, G. Dodd, F. J. Hensman, E. J. Seymour, H. Higginbotham, F. W. P. Hill.

1920-21: H. Bailey, J. M. Watson, R. Abbott; G. Lennon, A. Tirrell, J. Semple, F. Hull, A. Reynolds, F. J. Hensman; A. Roe, T. Parker, W. Molyneux, J. W. Lamb, H. L. Cockerill, L. R. Bayliss, W. Walsh, P. Stewart; S. Hoar, H. Higginbotham, G. Butcher, F. W. P. Hill, E. Simms, A. Mathieson, L. Bookman, H. Sidney, J. Shankland, J. McKechnie, J. Bradley.

1921-22: H. Bailey, T. Gibbon; A. Tirrell, G. Lennon, R. C. Graham, F. Hull, J. Stephenson; J. H. Foster, A. Roe, J. R. Walker, W. Molyneux, T. Parker, W. Walsh, R. Millar; E. J. Bassett, S. Hoar, H. Higginbotham, S. Reid, E. Simms, A. Mathieson, G. Butcher, L. Bookman, H. Sidney, J. Hall, H. S. Jephson.

1922-23: T. Gibbon, H. Bailey, S. Bird; G. Lennon, A. Tirrell, J. Stephenson, R. Graham; W. Jennings, A. Roe, J. Walker, W. Molyneux, J. H. Foster, R. Millar, A. Brown, T. Parker; S. Hoar, G. Butcher, S. Reid, W. Clarkson, H. Higginbotham, R. Thompson, R. Hoten, T. Irvine, R. Reader, T. Cottingham, W. Henderson, C. Bonsall, J. Grubb.

1923-24: T. Gibbon, J. Orr, W. Shepherd; R. Anderson, R. C. Graham, J. Pearson, A. Tirrell, J. Till; J. H. Foster, W. Jennings, R. Millar, W. Molyneux, A. Roe, J. R. Walker; S. Hoar, W. Henderson, G. Butcher, J. Green, A. Kerr, S. Reid, R. V. Hoten, C. Bonsall, C. Danskin.

1924-25: G. H. Brookes, J. Orr; A. Anderson, R. C. Graham, J. Johnson, J. Till; T. Davies, W. Jennings, R. Millar, J. Mills, A. Roe, J. R. Butcher, E. S. Cockle, W. Keen, J. Shankly, A. Kerr, S. Reid, R. W. Tricker, (amateur), R. V. Hoten, A. Brown, G. T. Dennis.



1925-26: H. Mingay, H. Purdy, R. Anderson, R. Graham, J. Till, S. Bedford, G. Richards, W. Jennings, J. R. Walker, R. Millar, S. Neal, A. Rennie, H. Roe, J. Miller, H. Moffat, N. Thomson, J. Shankly, S. Reid, J. Thompson, S. Littlewood, T. Love, W. Agnew, H. Rogers, G. Dennis, F. Robinson.

1926-27: W. Harper, W. E. Kaine, H. Mingay; R. C. Graham, J. Harkness, R. Kingham, R. M. Moir, D. Richards, J. Till, C. Wolstenholme; J. R. Black, C. R. Fraser, J. Fulton, J. Gordon, R. Millar, A. Rennie; W. Agnew, J. Clark, G. Dennis, R. Gillespie, H. Keeling, A. S. Nunn, F. Panther, J. Pointon, S. Reid, N. Thomson, J. T. Thompson, E. Turner, H. Woods, J. Yardley.

1927-28: H. Abbott, J. Muir, P. Spence; R. C. Graham, J. Harkins, R. Kingham, D. Richards, J. Till; J. R. Black, C. R. Fraser, J. Fulton, J. Gordon, J. Lumsden, R. Millar, J. Ramage, J. Reynolds, J. Banks, A. S. Davies, G. T. Dennis, R. G. Galloway, A. S. Nunn, F. G. Panther, J. Pointon, J. Reid, S. Reid, A. Rennie, J. Sutton, H. Woods, J. Yardley.

1928-29: H. Abbott, C. S. Banes, P. Spence; W. Curwen, R. Kingham, R. Graham, B. Harris, R. Haggerty, D. Richards; J. R. Black, J. Bodsworth, A. Clark, J. Donnelly, A. Forbes, C. R. Fraser, J. Fulton, R. Lumsden, R. Millar, J. Reynolds; L. Bedford, W. Birch, R. Boylen, A. Craigie, J. Daly, G. T. Dennis, A. Hutchin, A. S. Nunn, A. Rennie, T. Roe, J. Scott, W. Sheldon, W. Vaughan, A. V. Walters, W. Winnell, H. Woods, J. Yardley.

1929-30: C. S. Banes, G. B. Harford, F. G. Barber, W. Curwen, R. Kingham, D. Richards, E. Smith, R. Walker; J. R. Black, A. Clark, C. R. Fraser, J. Fulton, E. W. H. Gale, R. Millar, F. G. Morgan, A. Smeaton; L. Bedford, W. Birch, R. Boylen, W. Brown, J. Daly, J. Drinnan, A. Harwood, A. Hutchinson, W. McInnes, A. Rennie, W. J. Rickett, W. Sheldon, W. Winnell, H. Woods, J. Yardley.

1930-31: C. S. Banes, G. B. Harford; T. Hodgson, R. Kingham; W. Knox, D. Richards, E. Smith; A. Clarke, C. R. Fraser, E. W. H. Gale, A. Hale, H. M'Ginnigle, J. B. Muir, J. E. Page, J. Richmond; J. Armstrong, W. Brown, R. S. Bryce, F. Dent, A. Heslop, G. M'Nestry, A. Rennie, W. Rickett, J. Slicer, P. Smart, J. Yardley.

1931-32: G. B. Harford, J. Imrie; T. Hodgson, R. Kingham, W. Knox, G. C. Wilson; W. Brown, R. S. Bryce, C. R. Fraser, E. W. Gale, A. Hale, V. Jones, F. W. Kean, H. M'Ginnigle, W. Miller; A. S. Black, W. Cupit, J. Chapman, A. Heslop, H. Loasby, G. M'Nestry, A. Rennie, D. Rowe, J. Slicer, T. Tait, G. Turner, A. Wales, J. Yardley.

1932-33: G. B. Harford, J. Imrie; S. A. Coote, T. Hodgson, A. Ives, R. Kingham, T. S. Mackey; W. Brown, B. Diaper, C. R. Fraser, A. Hayhurst, F. W. Kean, H. M'Ginnigle; T. Alderson, W. Corkindale, W. C. Hutchinson, A. Mills, A. Nelson, A. Rennie, J. Roberts, D. Rowe, T. Tait, R. S. Weaver, R. Whalley.

1933-34: G. B. Harford, J. L. Mittell; S. A. Coote, J. S. Gibson, R. Kingham, T. S. Mackey, H. Reece; W. Beck, W. Brown, C. R. Fraser, F. W. Kean, H. Lawson, H. M'Ginnigle, J. Rennie, W. Seddon; S. Anderson, S. Bell, T. Bell, L. Hargreaves, F. Holbeach, D. Hutchinson, D. Kirkwood, G. S. Martin, G. Pearson, A. Rennie, T. Tait.

1934-35: J. L. Coen, G. B. Harford, C. Preedy; S. A. Coote, R. Kingham, T. S. Mackey, H. J. Preece, T. S. Smith; W. Beck, W. Brown, D. Colquhoun, C. R. Fraser, F. W. Kean, G. I. Kidd, H. M'Ginnigle, J. Payne, W. Thayne; J. Ball, S. Bell, T. Bell, C. Cook, W. Crompton, W. Haggart, H. Hackett, W. Harrison, D. Hutchinson, G. S. Martin, L. Murphy, W. Pease, A. Rennie, F. Roberts, J. R. Russell, G. Stephenson, J. T. Taylor.

1935-36: J. L. Coen, H. W. Dolman, H. McIntosh; H. Booton, S. A. Coote, A. Hubbard, R. Kingham, T. S. Mackey, T. S. Smith; D. Colquhoun, W. J. Fellowes, C. R. Fraser, W. P. B. Godfrey, W. H. Gooney, G. I. Kidd, H. M'Ginnigle, J. Nelson, W. Thayne; H. Andrews, J. Ball, F. E. Beresford, W. G. Boyd, C. Cook, W. Crompton, M. S. Crook, J. Hodge, G. S. Martin, J. Payne, L. Rich, F. Roberts, F. Sloan, G. Stephenson, R. Stevens, J. T. Taylor, G. Turner.



1936-37: J. L. Coen, H. W. Dolman; H. Booton, A. Hubbard, T. P. King, R. Kingham, B. R. Lutterloch, T. S. Mackey, T. S. Smith; C. Childs, W. J. Fellowes, J. Finlayson, W. P. B. Godfrey, W. H. Gooney, L. Hall, G. I. Kidd, H. M'Ginnigle, J. H. Nelson; J. T. Ball, F. E. Beresford, G. Cox, W. Crompton, E. Hancock, J. Hodge, F. Hogg, F. J. Hosier, G. S. Martin, H. Mills, J. C. Patrick, J. Payne, J. E. Harris, L. T. Rich, F. Roberts, F. Sloan, G. Stephenson, R. F. Stevens.

1937-38: J. L. Coen, H. W. Dolman, S. Mayberry; R. Carte, T. P. King, B. R. Lutterloch, T. S. Mackey, T. S. Smith; C. Childs, G. Dreyer, W. J. Fellowes, J. Finlayson, L. Hall, G. I. Kidd, J. Lewis, J. Loughran, N. V. McKay, J. Nelson, J. Strathie; E. Connelly, G. Cox, A. G. Dawes, C. Ferguson, H. E. Gager, E. O. Griffiths, E. Hancock, F. Hogg, J. E. Parris, J. Payne, W. J. Redfern, L. T. Rich, F. Roberts, G. H. Stephenson, R. F. Stevens, E. J. Vinall.

1938-39: J. L. Coen, H. W. Dolman, S. Mayberry; T. Dunsmore, T. P. King, B. R. Lutterloch, T. S. Smith, R. Carte; J. Finlayson, J. Loughran, J. Nelson, G. Dreyer, J. Wale, G. Goodyear, J. Strathie, F. Roberts, D. Gardiner, J. Lewis, G. I. Kidd, R. Campbell; J. Carroll, W. J. Redfern, E. Connelly, H. J. Billington, E. J. Vinall, W. W. Burgess, H. E. Gager, F. Laing, C. Clarke, C. Ferguson, G. H. Stephenson, R. F. Stevens, F. Hogg.

1939-40 (only three League matches played): J. L. Coen, S. Mayberry, G. E. Duke; T. Dunsmore, B. R. Lutterloch, C. J. Ladd, H. H. Fletcher; J. Finlayson, G. Goodyear, R. Campbell, G. Dreyer, P. J. Burke, E. Hindmarsh, F. Roberts, D. Gardiner, J. Carroll, C. Clark, W. W. Burgess, H. E. Gager, F. Laing, A. F. Scott, H. J. Billington, E. J. Vinall, C. Fullarton, E. J. Duggan, J. Gillespie, G. H. Stephenson, F. Hogg, R. Stockill.

1946-47: N. L. Bywater, B. R. Streten, G. E. Duke, M. Morrison, J. Palmer; W. Cooke, D. Beach, L. Lake, J. Sanderson; F. Soo, H. E. Gager, D. Gardiner, G. Brice, G. Goodyear, S. Kettley, R. Morton, J. Thompson, C. Garner, L. Hall; W. L. Waugh, A. Seen, A. Driver, H. J. Billington, E. J. Duggan, W. Bates, W. Wallbanks, M. Daniel, E. Connelly, W. Shanks, R. Hacking, D. Duncan, H. Lee, S. High, A. F. Scott, J. Ball.

1947-48: B. R. Streten, N. L. Bywater, G. E. Duke; W. Cooke, W. M. Hughes, L. Lake, J. Wilson, J. Sanderson, J. Pemberton; F. Soo, S. Owen, D. Gardiner, H. E. Gager, L. Hall, R. Ruffett, R. Morton, N. Day, W. Collins, S. Kettley; W. L. Waugh, R. Brennan, E. J. Duggan, H. J. Billington, M. Daniel, S. Ottewell, E. Connelly, A. Driver, W. Shanks, P. Small, W. Wallbanks, S. Nelson, M. Walker, S. High, C. Burtenshaw, D. Duncan, J. O'Brien, L. York.

1948-49: B. R. Streten, G. E. Duke, I. Hughes, W. Cooke, D. Gardiner, L. Hall, S. Owen, W. Gipton, W. Collins, R. Morton, C. Watkins, R. Ruffett, N. Day, J. Pemberton; P. Small, S. Nelson, W. Shanks, C. Burtenshaw, R. Brennan, J. W. Arnison, W. Burtenshaw, T. Kiernan, M. Daniel, E. J. Duggan, W. L. Waugh, J. Taylor, J. O'Brien, L. Lawton, N. Ronson, L. Slatter, A. Stevenson.

1949-50: B. R. Streten, I. Hughes, D. Williams; W. Cooke, T. Aherne, L. Lake, J. Wilson, J. Mulvaney, J. Pemberton, J. Thompson, A. Thompson; C. Watkins, S. Owen, W. Shanks, D. Gardiner, N. Day, R. Ruffett, L. Hall, W. Gipton, R. Morton, G. Turner, T. Kelly, W. Collins, W. Aherne, R. Horner, A. Smith; A. Glover, T. Kiernan, G. Stobbart, W. Arnison, J. Taylor, W. L. Waugh, P. Walsh, R. Wyldes, J. Jinks, P. James, M. Cullen, P. Baxter, L. Lawton, L. Slatter, N. Ronson, P. Small, C. Burtenshaw, W. Burtenshaw.

1950-51: B. R. Streten, I. Hughes, D. Williams, E. Stibbards; W. Cooke, T. Aherne, L. Lake, J. Wilson, L. Jones, J. Pemberton, J. Thompson, A. Thompson, S. Dunne; C. Watkins, S. Owen, W. Shanks, P. McAuley, R. Morton, G. Turner, L. Hall, R. Smith, T. Kelly, W. Aherne, T. Wheeler, J. Whent, D. Gardiner, R. Horner; G. Stobbart, J. Taylor, B. Moore, W. Davie, W. Havenga, R. Wyldes, A. Taylor, M. Cullen, J. Groves, P. Baxter, A. Glover, J. Jinks, L. Lawton, L. Slatter, J. Stranaghan, W. Arnison, C. Corten, N. Ronson, R. Davies.



1951-52: B. R. Streten, R. Baynham, D. Williams, E. Stibbards; W. Cooke, T. Aherne, S. Dunne, L. Jones, J. Pemberton, A. Thompson, K. Hawkes; R. Morton, T. Kelly, W. Miller, S. Owen, L. Hall, C. Watkins, W. Shanks, R. Smith, T. Wheeler; R. Davies, M. Cullen, G. Turner, G. Stobbart, J. Scott, J. Groves, H. McJarrow, B. Moore, J. Taylor, D. Sexton, A. Taylor, W. Davie, D. Allen, B. Mitchell, W. Havenga, R. Wyldes.

1952-53: B. R. Streten, R. Baynham, D. Williams; L. Jones, S. Dunne, W. Cooke, T. Aherne, J. Pemberton, K. Hawkes, A. Thompson, J. Folwell; R. Morton, T. Kelly, W. Miller, S. Owen, L. Hall, W. Dallas, R. Bell, C. Watkins, W. Shanks, R. Smith; R. Davies, M. Cullen, E. Bennett; G. Turner, J. Groves, J. Pye, B. Moore, D. Sexton, H. McJarrow, G. Bradley, J. Scott, D. Allen, B. Mitchell, A. Taylor, N. Brown.

1953-54: B. R. Streten, R. Baynham, D. Williams; L. Jones, T. Aherne, S. Dunne, J. Pemberton, K. Hawkes, A. Thompson, J. Folwell; R. Morton, T. Kelly, W. Miller, S. Owen, L. Hall, W. Dallas, R. Bell, C. Watkins, W. Shanks, R. Smith, R. Davies, M. Cullen, E. Bennett, G. Turner, B. Moore, J. Downie, J. Groves, J. Pye, H. McJarrow, G. Bradley, J. Scott, D. Allen, P. MacEwan, G. Cummins, B. Mitchell, R. Adamson, A. Taylor, N. Brown, J. Adam, A. Loasby.

1954-55: B. R. Streten, R. Baynham; S. Dunne, T. Aherne, L. Jones, K. Hawkes, A. Thompson, R. Bell; R. Morton, S. Owen, W. Shanks, J. Pemberton, T. Kelly, R. Smith, A. McGuffie, W. Dallas, L. Hall, M. Collins, C. Watkins; R. Davies; M. Cullen, D. Allen, G. Turner, P. MacEwan, J. Pye, J. Scott, J. Groves, R. Pearce, G. McLeod, A. Taylor, G. Cummins, A. Loasby, J. Adam, N. Brown, B. Mitchell.

1955-56: R. Baynham, B. R. Streten, A. Collier; S. Dunne, L. Jones, T. Aherne, A. Thompson, L. Hawkes; R. Morton, J. Pemberton, A. McGuffie, M. Collins, S. Owen, T. Kelly, W. Dallas, R. Bell, L. Hall, K. Underwood, W. Shanks, R. Smith; R. Davies, M. Cullen, A. Pounder, G. Turner, D. Allen, R. Pearce, P. MacEwan, A. Gregory, G. Cummins, J. Groves, E. Duggan, B. Hawkes, A. Loasby, G. McLeod, P. Clemitson, J. Adam, A. Taylor, N. Brown.

1956-57: R. Baynham, B. R. Streten, A. Collier; S. Dunne, T. Aherne, L. Jones, B. McNally, A. Thompson, K. Hawkes; R. Morton, A. McGuffie, J. Pemberton, S. Owen, T. Kelly, K. Underwood, L. Smith, R. Smith, R. Bell, R. Pearce, M. Collins, J. Chambers, W. Shanks; R. Davies, M. Cullen, A. Pounder, G. Turner, A. Brown, A. Gregory, G. McLeod, E. Duggan, G. Cummins, J. Groves, B. Hawkes, A. Loasby, J. Adam, R. Legate, G. King.

1957-58: R. Baynham, E. Marsh, A. Collier; S. Dunne, T. Aherne, L. Jones, B. McNally, K. Hawkes, T. Brice, A. Daniel; R. Morton, A. McGuffie, J. Chambers, S. Owen, T. Kelly, K. Underwood, L. Smith, R. Pearce, D. Pacey, M. Collins, W. Shanks, D. Hetherington; M. Cullen, J. Adam, B. Whitby, G. Turner, A. Brown, A. Gregory, M. Dixon, G. Cummins, J. Groves, E. Duggan, A. Loasby, G. MacLeod, D. Rowland, R. Legate, B. Hawkes, G. King, J. Walker.

1958-59: R. Baynham, A. Collier, E. Marsh; S. Dunne, M. McNally, K. Hawkes, T. Aherne, T. Brice, A. Daniel, W. Raffell; R. Morton, A. McGuffie, J. Chambers, S. Owen, T. Kelly, L. Smith, K. Underwood, D. Pacey, D. Hetherington, W. Shanks, M. Collins, J. Groves, J. Walker, H. McCann, M. Jenkins; W. Bingham, B. Whitby, J. Adam, G. Turner, B. Hawkes, A. McCann, A. Brown, A. Gregory, M. Dixon, G. Cummins, J. Kilgannon, D. Rowland, C. Bishop, R. Legate, G. King.

1959-60: R. Baynham, A. Collier; S. Dunne, K. Hawkes, B. McNally, A. Daniel, T. Brice, W. Raffell, G. King; R. Morton, D. Pacey, T. Kelly, J. Groves, A. Brown, A. McGuffie, K. Underwood, M. Collins, D. Hetherington, J. Walker, R. Folwell, C. Bishop, F. Dunlop, M. Jenkins, M. Loundes, J. Chambers, N. Parren; W. Bingham, J. Kilgannon, G. Cummins, G. Turner, B. Hawkes, M. Tracey, H. McCreadie, R. Carter, J. McBride, A. McCann, H. McCann, R. Legate, D. Noake, D. Rowland, B. Whitby, G. Andrews, J. Warner, A. Gregory, M. Dixon.



# THE PRESIDENT AND THE BOARD OF DIRECTORS LUTON TOWN FOOTBALL AND ATHLETIC CLUB, LTD.



The President :  
Mr. Charles Jeyes



(Vice-Chairman)  
Mr. A. F.  
England



The Chairman of the Board  
Mr. P. G. Mitchell



Mr. P. W.  
Wright



Mr. F.  
Tooley



Mr. T.  
Hodgson



Mr. S. W. W.  
Bigg, J.P.

Club Colours : Shirts, white; knickers, black; stockings, black and white.

Ground : Kenilworth Road, Luton.

Registered Office : 70 and 72 Kenilworth Road, Luton.

Hon. Medical Officer : Dr. E. J. Crarer, M.B., Ch.B.



LESLIE KER (goalkeeper). The second former Schoolboy International goalkeeper on the books, he played for England in all their matches last season. Not yet 16, he had chances to sign for well-known clubs in his own area of Co. Durham, but preferred to join the Town because he felt that there would be more of a future for him here. When he signed at the beginning of July he became the first of the new apprentice professionals, a scheme that was adopted by the Football League at their annual meeting. Was born at Pitington.

Comments and Reports  
of Local Matches  
in  
**THE LUTON NEWS**  
*Every Thursday*



# LUTON RESULTS IN F.A. CUP

1928-29	Nov. 24—1st	Round :	Southend .....	H	5—1
	Dec. 8—2nd	Round :	Fulham .....	A	0—0
	Dec. 13—2nd	Round :	Fulham* .....	H	4—1
	Jan. 12—3rd	Round :	Crystal Palace .....	H	0—0
1929-30	Jan. 16—3rd	Round :	Crystal Palace* .....	A	0—7
	Nov. 30—1st	Round :	Queen's Park Rangers ..	H	2—3
1930-31	Nov. 29—1st	Round :	Clapton Orient .....	H	2—2
	Dec. 4—1st	Round :	Clapton Orient* .....	A	4—1
	Dec. 13—2nd	Round :	Watford .....	A	1—3
1931-32	Nov. 28—1st	Round :	Swindon .....	A	5—0
	Dec. 12—2nd	Round :	Lincoln .....	A	2—2
	Dec. 16—2nd	Round :	Lincoln* .....	H	4—1
	Jan. 9—3rd	Round :	Wolves .....	H	1—2
1932-33	Nov. 26—1st	Round :	Kingstonians .....	H	2—2
	Nov. 30—1st	Round :	Kingstonians* .....	A	3—2
	Dec. 10—2nd	Round :	Stockport County .....	A	3—2
	Jan. 14—3rd	Round :	Barnsley .....	A	0—0
	Jan. 18—3rd	Round :	Barnsley* .....	H	2—0
	Jan. 28—4th	Round :	Tottenham Hotspur .....	H	2—0
	Feb. 18—5th	Round :	Halifax Town .....	A	2—0
1933-34	Mar. 4th—6th	Round :	Everton .....	A	0—6
	Jan. 12—3rd	Round :	Arsenal .....	H	0—1
1934-35	Jan. 12—3rd	Round :	Chelsea .....	A	1—1
	Jan. 16—3rd	Round :	Chelsea* .....	H	2—0
	Jan. 26—4th	Round :	Burnley .....	A	1—3
1935-36	Jan. 11—3rd	Round :	West Ham .....	A	2—2
	Jan. 15—3rd	Round :	West Ham* .....	H	4—0
	Jan. 25—4th	Round :	Manchester City .....	A	1—2
1936-37	Jan. 16—3rd	Round :	Blackpool .....	H	3—3
	Jan. 20—3rd	Round :	Blackpool* .....	A	2—1
	Jan. 30—4th	Round :	Sunderland .....	H	2—2
	Feb. 3—4th	Round :	Sunderland* .....	A	1—3
1937-38	Jan. 8—3rd	Round :	Scarborough .....	A	1—1
	Jan. 12—3rd	Round :	Scarborough* .....	H	5—1
	Jan. 22—4th	Round :	Swindon Town .....	H	2—1
	Feb. 12—5th	Round :	Manchester City .....	H	1—3
1938-39	Jan. 7—3rd	Round :	Liverpool .....	A	0—3
1945-46	Jan. 5—3rd	Round :	Derby County .....	H	0—0
	Jan. 9—3rd	Round :	Derby County .....	A	0—3
1946-47	Jan. 11—3rd	Round :	Notts County .....	H	6—0
	Jan. 25—4th	Round :	Swansea Town .....	H	2—0
	Feb. 8—5th	Round :	Burnley .....	H	0—0
	Feb. 11—5th	Round :	Burnley* .....	A	0—3

1947-48	Jan. 11—3rd	Round :	Plymouth .....	A	4—2
	Jan. 24—4th	Round :	Coventry .....	H	3—2
	Feb. 7—5th	Round :	Queen's Park Rangers ..	A	1—3
1948-49	Jan. 8—3rd	Round :	West Ham .....	H	3—1
	Jan. 29—4th	Round :	Walsall .....	H	4—0
	Feb. 12—5th	Round :	Leicester City .....	H	5—5
	Feb. 19—5th	Round :	Leicester City* .....	A	3—5
1949-50	Jan. 7—3rd	Round :	Grimsby Town .....	H	3—4
1950-51	Jan. 6—3rd	Round :	Portsmouth .....	H	2—0
	Jan. 27—4th	Round :	Bristol Rovers .....	H	1—2
1951-52	Jan. 12—3rd	Round :	Charlton Athletic .....	H	1—0
	Feb. 2—4th	Round :	Brentford .....	H	2—2
	Feb. 6—4th	Round :	Brentford* .....	A	0—0
	Feb. 18—4th	Round :	Brentford* .....	N	3—2
	Feb. 23—5th	Round :	Swindon Town .....	H	3—1
	Mar. 8—6th	Round :	Arsenal .....	H	2—3
1952-53	Jan. 10—3rd	Round :	Blackburn Rovers .....	H	6—1
	Jan. 31—4th	Round :	Manchester City .....	A	1—1
	Feb. 4—4th	Round :	Manchester City* .....	H	2—0
	Feb. 14—5th	Round :	Bolton Wanderers .....	H	0—1
1953-54	Jan. 9—3rd	Round :	Blackpool .....	A	1—1
	Jan. 13—3rd	Round :	Blackpool* .....	H	0—0
	Jan. 18—3rd	Round :	Blackpool* .....	V	1—1
	Jan. 25—3rd	Round :	Blackpool* .....	W	0—2
1954-55	Jan. 8—3rd	Round :	Workington .....	H	5—0
	Jan. 29—4th	Round :	Rotherham United .....	A	5—1
	Feb. 19—5th	Round :	Manchester City .....	H	0—2
1955-56	Jan. 11—3rd	Round :	Leicester City .....	H	0—4
1956-57	Jan. 5—3rd	Round :	Aston Villa .....	H	2—2
	Jan. 7—3rd	Round :	Aston Villa* .....	A	0—2
1957-58	Jan. 4—3rd	Round :	Stockport County .....	A	0—3
1958-59	Jan. 10—3rd	Round :	Leeds United .....	H	5—1
	Jan. 24—4th	Round :	Leicester City .....	A	1—1
	Jan. 28—4th	Round :	Leicester City* .....	H	4—1
	Feb. 14—5th	Round :	Ipswich Town .....	A	5—2
	Feb. 28—6th	Round :	Blackpool .....	A	1—1
	Mar. 4—6th	Round :	Blackpool* .....	H	1—0
	Mar. 14—Semi-final :		Norwich City .....	T	1—1
	Mar. 18—Semi-final :		Norwich City* .....	B	1—0
	May 2—Final :		Nottingham Forest .....		1—2
1959-60	Jan. 9—3rd	Round :	Exeter City .....	A	2—1
	Jan. 30—4th	Round :	Huddersfield Town .....	A	1—0
	Feb. 20—5th	Round :	Wolves .....	H	1—4

(V) At Villa Park.

(N) At Highbury.

\* Replay.

(W) At Wolverhampton.

(T) At Tottenham.

(B) At Birmingham.



## TOWN PLAYERS' APPEARANCES

**DIVISION I.** — S. Dunne 41; W. Bingham 40; A. Brown 39; R. Baynham 37; J. Groves, R. Morton each 33; D. Pacey 32; T. Kelly, G. Turner each 31; G. Cummins 30; K. Hawkes 22; A. Gregory 18; A. Daniel 16; J. McBride 13; J. Kilgannon 12; D. Noake 7; M. Tracey, B. McNally, each 6; B. Hawkes, A. Collier each 5; M. Dixon, J. Warner, H. McCreadie, A. McCann, M. Collins each 1.

**F.A. CUP.** — R. Baynham, S. Dunne, R. Morton, D. Pacey, J. Groves, T. Kelly, W. Bingham, A. Brown, G. Turner each 3; A. Daniel, A. Gregory each 2; B. McNally, B. Hawkes each 1.

**FOOTBALL COMBINATION.** — M. Collins 32; A. Collier 26; B. Hawkes 24; J. Walker 22; A. Daniel, J. Kilgannon each 19; T. Brice 18; M. Tracey 16; A. McGuffie, B. McNally, K. Hawkes each 15; A. McCann, J. Warner each 12; F. Dunlop, D. Noake, K. Underwood each 11; A. Gregory 10; H. McCreadie 9; T. Kelly 8; G. King 7; G. Turner, H. McCann, B. Whitby, M. Dixon each 6; B. Carter 5; R. Folwell, R. Legate each 4; R. Chandler, D. Wells each 3; G. Cummins, J. Groves, D. Foster, B. Henley, C. Bishop, D. Rowland each 2; W. Raffell, D. Hetherington, A. Brown, D. Pacey, F. Zackey, D. Sydes, R. Morton each 1.

## GOAL-SCORERS FOR SEASON 1959-60

**DIVISION I.** — W. Bingham 16; A. Brown 7; G. Turner, J. McBride each 6; A. Gregory 5; G. Cummins 4; M. Dixon, J. Kilgannon, D. Pacey, R. Morton, J. Groves and opponent each 1.

**F.A. CUP.** — G. Turner 3, A. Gregory 1.

**FOOTBALL COMBINATION.** — J. Kilgannon, B. Hawkes each 7; A. McGuffie, M. Dixon each 5; H. McCreadie, A. Gregory, J. Walker each 4; G. Turner, D. Noake, M. Tracey each 3; B. McNally 2, M. Collins, A. McCann, R. Legate, J. Warner, G. King, K. Hawkes each 1.

**PHIL COLEY** (Secretary). Every football club has to have a smooth-working administrative staff and Phil Coley heads the Town's highly competent one. From the point of view of being harassed, last season was less difficult than the previous one when the staff were overwhelmed with applications for tickets for each succeeding Cup round. Last season, this happened only once, when Wolves were here in the Cup, but he probably wishes it could have been otherwise. When he took over from Archie Wickson 14 years ago, he was without previous experience with a first-class football club, but his background enabled him to settle down to the work quickly and he is now well-known in the game. Was born in Sunderland and went to school there, but he has lived in Luton most of his adult life, though he usually takes the opportunity of returning to the north-east coast when the Town play in the area.



**DIVISION I AND II REPORTS IN  
THE GREEN 'UN EVERY SATURDAY**



## F.A. CUP WINNERS SINCE 1901

---

- 1900-01—Tottenham H. beat Sheffield Utd. (3—1 after a draw 2—2).  
 1901-02—Sheffield Utd. beat Southampton (2—1 after a draw 1—1).  
 1902-03—Bury beat Derby County (6—0).  
 1903-04—Manchester City beat Bolton Wanderers (1—0).  
 1904-05—Aston Villa beat Newcastle United (2—0).  
 1905-06—Everton beat Newcastle United (1—0).  
 1906-07—Sheffield Wednesday beat Everton (2—1).  
 1907-08—Wolverhampton Wanderers beat Newcastle United (3—1).  
 1908-09—Manchester United beat Bristol City (1—0).  
 1909-10—Newcastle United beat Barnsley (2—0 after a draw 1—1).  
 1910-11—Bradford City beat Newcastle Utd (1—0 after a draw 0—0).  
 1911-12—Barnsley beat West Bromwich A. (1—0 after a draw 0—0).  
 1912-13—Aston Villa beat Sunderland (1—0).  
 1913-14—Burnley beat Liverpool (1—0).  
 1914-15—Sheffield United beat Chelsea (3—0).  
 1915-19—No competition.  
 1919-20—Aston Villa beat Huddersfield Town (1—0).  
 1920-21—Tottenham Hotspur beat Wolverhampton Wanderers (1—0).  
 1921-22—Huddersfield Town beat Preston North End (1—0).  
 1922-23—Bolton Wanderers beat West Ham (2—0).  
 1923-24—Newcastle United beat Aston Villa (2—0).  
 1924-25—Sheffield United beat Cardiff City (1—0).  
 1925-26—Bolton Wanderers beat Manchester City (1—0).  
 1926-27—Cardiff City beat Arsenal (1—0).

- 1927-28—Blackburn Rovers beat Huddersfield Town (3—1).  
 1928-29—Bolton Wanderers beat Portsmouth (2—0).  
 1929-30—Arsenal beat Huddersfield Town (2—0).  
 1930-31—West Bromwich Albion beat Birmingham (2—1).  
 1931-32—Newcastle United beat Arsenal (2—1).  
 1932-33—Everton beat Manchester City (3—0).  
 1933-34—Manchester City beat Portsmouth (2—1).  
 1934-35—Sheffield Wednesday beat West Bromwich Albion (4—2).  
 1935-36—Arsenal beat Sheffield United (1—0).  
 1936-37—Sunderland beat Preston North End (3—1).  
 1937-38—Preston N. E. beat Huddersfield Town (1—0 after extra time).  
 1938-39—Portsmouth beat Wolverhampton Wanderers (4—1).  
 1939-45—No competition.  
 1945-46—Derby County beat Charlton Athletic (4—1 after extra time).  
 1946-47—Charlton Athletic beat Burnley (1—0 after extra time).  
 1947-48—Manchester United beat Blackpool (4—2).  
 1948-49—Wolverhampton Wanderers beat Leicester City (3—1).  
 1949-50—Arsenal beat Liverpool (2—0).  
 1950-51—Newcastle United beat Blackpool (2—0).  
 1951-52—Newcastle United beat Arsenal (1—0).  
 1952-53—Blackpool beat Bolton Wanderers (4—3).  
 1953-54—West Bromwich Albion beat Preston North End (3—2).  
 1954-55—Newcastle United beat Manchester City (3—1).  
 1955-56—Manchester City beat Birmingham City (3—1).  
 1956-57—Aston Villa beat Manchester United (2—1).  
 1957-58—Bolton Wanderers beat Manchester United (2—0).  
 1958-59—Nottingham Forest beat Luton Town (2—1).  
 1959-60—Wolves beat Blackburn Rovers (3—0).



# LANE'S MOTORS

LUTON'S USED CAR  
SPECIALISTS

•  
GUARANTEED VEHICLES

•  
Easy                      Part                      Immediate  
Payments              Exchanges              Insurance

•  
747 DUNSTABLE ROAD

(Opposite Luton & Dunstable Hospital)

Tel.: LUTON 51451/2

also at

SOLWAY GARAGE &  
FILLING STATION

Tel.: LUTON 52586

Solway Road/Alder Crescent  
(Off Leagrave Road)

FRANK KING (Trainer). Extra responsibility was thrown upon him when Sid Owen resigned the managership on April 23, just a week before the Town were due to leave on their Czechoslovakian tour and he was left virtually in charge. Has had two seasons with the Town, during which time he has been most competent in all phases of the training and coaching job. In each, he has first-class qualifications and his treatment of players' injuries was most effective. The Town seem to favour former goalkeepers when they come to appoint a trainer because both his predecessors played in that position and Frank kept goal for Everton and Derby County. His playing career ended prematurely through injury when he was playing as a guest for Southport, where he lived for some years. Is a Geordie who played for Blyth Spartans before going to Everton when only in his teens.



THE GREEN 'UN EVERY SATURDAY  
FOR FULL CLASSIFIED RESULTS



# G. A. WILD & SONS Ltd.

*Sports Specialists*

14 Manchester St., Luton. Tel. 780

41 High St. North, Dunstable. Tel. 275

AND OPEN SHORTLY AT

7 HIGH ST., BEDFORD



Suppliers to LUTON TOWN F.C.



Official Stockists of "BUKTA" & "UMBRO"  
Clothing

Widest range of Football Boots in the Home  
Counties. Over 1,000 pairs in stock. Goal Posts,  
Nets, Corner Flag Poles and Ground Markers  
available for immediate delivery



Club enquiries invited : Generous Discounts Given

GOALS: 11211 TRANSFERRED TO:-  
8 PORTSMOUTH 13/3/61 FH00

ALLAN BROWN (left-half). Presumably this is to be his position in the coming season because he seemed to take on a new lease of life when he was moved into the half-back line where he gave a series of brilliant displays. On occasion, he stepped in at centre-half and it might well be that this will prove to be his final position. Although he spent a number of seasons in one or other of the inside-forward positions, it was as a wing-half that he started his professional career with East Fife, who collected £25,000 when he moved on to Blackpool in 1950. Three years ago, when they were badly in need of points, the Town paid a five figures fee for him and he brought about an immediate improvement. Serious injuries have deprived this unlucky player of two Wembley appearances for Blackpool and three or four further Scottish caps to add to those he had already won, and it was not until just over 12 months ago that he fulfilled a life-long ambition to play at Wembley.



DIVISION I AND II REPORTS IN  
THE GREEN 'UN EVERY SATURDAY



SIM STANDEN; GOALKEEPER TRANS.  
FROM ARSENAL, £8,000 28 OCT. 1960

*For the Finest*

**Radio and Television  
Musical and Electrical  
Appliances**

see

the Specialists

**HICKIES**

**ELECTRICAL & MUSICAL CENTRE  
PARK SQUARE, LUTON**

Telephone 1262



We pride ourselves on offering a first-class  
range of equipment; a speedy, efficient service;  
and personal, courteous attention

RON BAYNHAM (goalkeeper).  
Even though he has not been capped since 1956, when he played against Ireland, Denmark and Spain and also appeared for the Football League, many good judges rate him as the best goalkeeper in the country. There was partial acknowledgment of this in the close season before last when he was a member of the England party on their American tour but, disappointingly for him, had to watch all four matches from the touchline. Several times last season, particularly away from home, his brilliance saved the Town a vital point and, with a lesser goalkeeper, the Town's fate may well have been sealed sooner than it was. Is now beginning his tenth season with the club, which he joined in 1951 from Southern Leaguers Worcester City, who pocketed a very sizeable fee for a goalkeeper. Surprisingly, because he was born in Birmingham, the first-class midland clubs missed noting his prowess.



THE GREEN 'UN EVERY SATURDAY  
FOR CHILTERN'S COMMENTARY



ASHWORTH

GOALS 5 1 1 1 1 2 1 2 = 11

# Home Furnishings

**FOR MODERN LIVING ...**

BINGHAM; EVERTON - 1 1 1 1 1 2

**MODERN BUDGETS!**



2/- in the £

DEPOSIT

Only 1s. in the £  
interest per annum

IT'S DIVISION II SOCCER IN 1960/61  
BUT IT'S ALWAYS TOP-CLASS  
FURNITURE AT

## A. C. RIVERS

The local firm with the reputation for value  
PROVIDENT CHECKS TAKEN

203 DUNSTABLE ROAD, LUTON

Tel. 4565

(Near Bury Park Shopping Centre)

GOALS 5 1 1 1 1 2 1 2 = 11  
TRANSFERRED TO EVERTON  
IN EXCHANGE FOR ASHWORTH AND BRANWELL  
AND A FEE 14TH OCTOBER 1960

BILLY BINGHAM (outside-right). One of the few bright spots in the Town attack during last season and he was easily the leading scorer with 16 goals, making a total of 30 in League and Cup during his two seasons with the club. When he was a youngster of 18 with Glentoran, the Town tried to persuade him to join them, but he preferred to join the then more fashionable Sunderland and gave them fine service over a number of years. When he finally came to Kenilworth-road, it cost a £15,000 fee which he went a long way towards repaying by his performances in the Cup competition of the season before last. Has what is probably the unique record in International football of not having missed a match for Ireland since 1952 and his ambition is to take the number of his caps, now nearing 40, to the 50 mark. On current form, he would probably walk into a team drawn from the four countries.



THE GREEN 'UN EVERY SATURDAY  
FOR FULL CLASSIFIED RESULTS



OMNIBUS SERVICES  
IN THE COUNTIES OF

Bedford, Buckingham, Cambridge  
Hertford, Huntingdon, Leicester,  
Northampton, Oxford, Rutland

COACHES for PRIVATE PARTIES

EXCURSIONS to away matches and  
other places and events of interest

<b>SUMMER EXPRESS COACH SERVICES</b>	●	Bournemouth	●	Brighton
		Clacton	●	Dovercourt
	●	Eastbourne	●	Frinton
		Hastings	●	Jaywick Sands
	●	Margate	●	Portsmouth
		Ramsgate	●	Southend
	●	Southsea	●	Walton
				Yarmouth

Local Office : Bute Street, LUTON. Phone 5860  
Head Office : Houghton Road, NORTHAMPTON  
Phone 3669

TRAVEL BY

**UNITED COUNTIES**

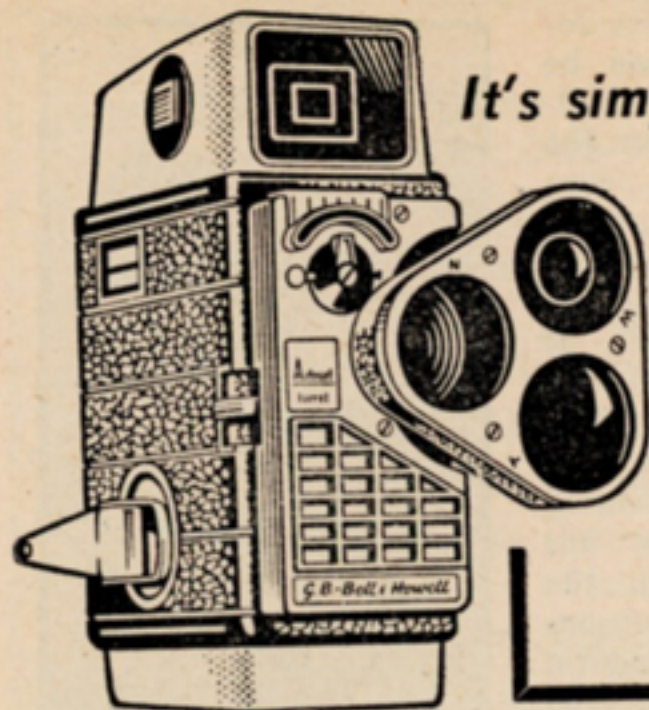
13 JULY 1961 TRANSFERRED TO  
CAMBRIDGE (SOUTHERN LEAGUE)

GEORGE CUMMINS (inside-left). On his day, he can be one of the cleverest ball-playing inside-forwards in the game but, unfortunately, consistency is not one of his main qualities. Undoubtedly, his best display was that in which he engineered the downfall of Tottenham, then top of the League, at Kenilworth-road last season and it was fitting that he should score the deciding goal. Dublin born, he has held a regular place in the Eire team for some seasons and went on their Continental tour with them during the summer. Then, he had the bad luck to be injured in the second match and spent some weeks on his return having treatment for ligament trouble. Cummins has had more than his share of injuries in the past, including an operation for cartilage trouble from which he took a long time to recover completely. Everton signed him when he was in his teens and the Town paid £12,000 for his transfer in 1953.



THE GREEN 'UN EVERY SATURDAY  
FOR ALL LOCAL SPORTS RESULTS





*It's simple and it's fun  
making*

## Home Movies in Colour

It's neither difficult nor expensive to make colour movies of the kiddies, holidays, weddings, and all the red letter days in your life with a Bell & Howell Cine Camera. You can do it . . . you can afford it. Let us show you the magnificent G.B.-Bell & Howell range. Prices from £21.18.10 inc. P.T. or on easy terms

**G.B.-Bell & Howell**

THE CINE CAMERAS  
AND PROJECTORS YOU  
CAN AFFORD NOW

Demonstrations and All Particulars from

# Wm. H. COX

THE CINE SPECIALISTS

WELLINGTON STREET, LUTON

Phone 151

ILLUSTRATED: AUTOSET TURRET

SOALS 1

BOB MORTON (right-half). Man of many parts because he has had acquaintance with seven different places in the first team and has accepted all manner of switches in a cheerful manner. Probably though, the necessity for changing his position so often has cost him the England cap at right-half he so much deserved and he has had to be content with being chosen as reserve to the England team and an appearance for the "B" XI. Further consolation was a place in the F.A. party which toured South Africa. Several times, the Town have tried to solve their centre-forward problem by switching him there and, at times, it has been successful but, always, there has come the change back to his best position of right-half where he played in the closing weeks of last season. Born at Aston Clinton, he has been with the Town, his only professional club, since 1948.



THE GREEN 'UN EVERY SATURDAY  
FOR UP-TO-DATE LEAGUE TABLES



THE LUTON MOTOR COMPANY LTD.



DISTRIBUTORS

When you buy Ford you buy more than a car,  
you buy the backing of unique service  
facilities from the industry's leading dealer  
organisation.

**FOR**

*Exceptionally*

**GOOD**

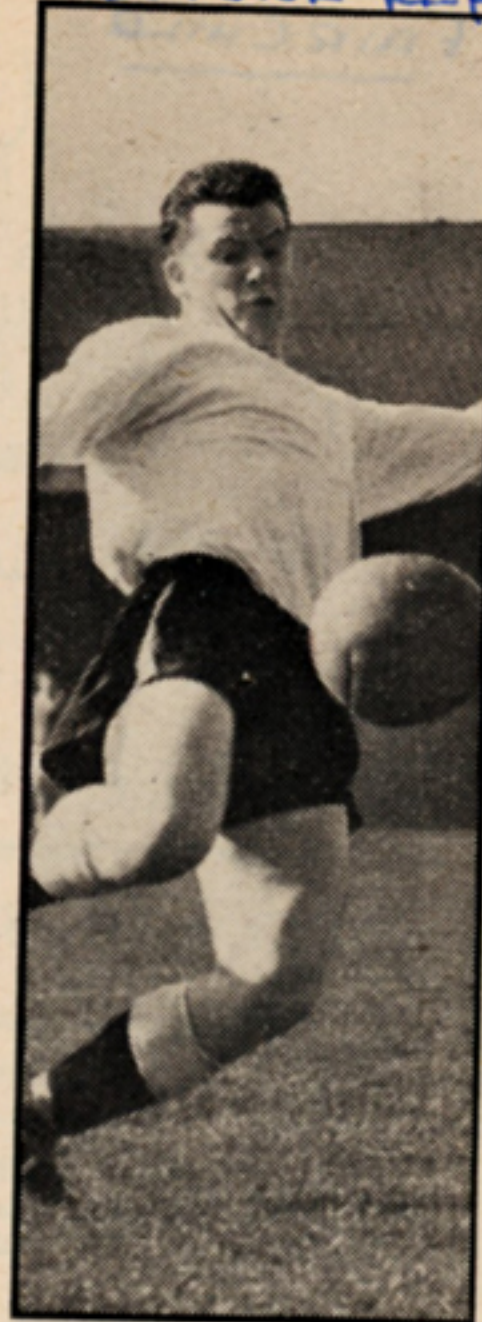
**FORD SERVICE**



DUNSTABLE ROAD • LUTON 3713

GOALS: 111 TRANSFERRED TO PARTICK  
THISTLE IN EXCHANGE FOR JIM FLEMING  
25/11/60  
OUTSIDE LEFT

JOE McBRIDE (centre-forward). Moved twice last season for a £12,500 fee on each occasion and, curiously enough, left clubs who appeared in their national Cup Finals, Kilmarnock and Wolves. The latter club stepped in before Christmas when the Town and Birmingham were also showing an interest in McBride's future but, apparently, his style did not fit in at Molineux because he was never given a chance in the League side. Desperate in their efforts to increase their goal output, the Town signed him in February and he made a brilliant debut against Leicester. However, the support he received was not of the best, but he did enough to encourage the thought that he will be an outstanding opportunist in the coming season. Only 22, he is strong and fearless, good in the air and is always willing to have a shot at goal when the opportunity offers.



THE GREEN 'UN EVERY SATURDAY  
FOR FULL CLASSIFIED RESULTS



LEGATE

GOALS: 1112 = 4

FAIRCHILD

GOALS: 1



MEMBERS  
OF THE  
NATIONAL  
SPORTING  
LEAGUE

## W. H. LANCASTER & SONS

56 Cambridge Street, Luton

---

**COMMISSION AGENTS**

---

Established 1907

HORSE RACING

GREYHOUND  
RACING

FOOTBALL

Telephone

**2340**

6 lines

Telegrams:

"Require," Luton,  
Beds.

COURTESY

PRIVACY

PROMPT  
PAYMENT

Credit Accounts Opened on Approved Reference

GOALS: 1111122221121114111  
28

GORDON TURNER (inside-right). Seemed unable to regain the confidence in front of goal that made him one of the best-known marksmen in the country and, for him, there was the unusually low output of six goals in 31 League matches. Probably, he was affected by the over-anxiety that hung over most of the forward line in their finishing and, it may be, that with less tension this season, he will regain much of his old powers. This loss of confidence began in the season before last after an injury, so that he did not command a place in the Cup Final team, though he received the consolation of a twelfth man's medal. Came to Luton in 1950 when he was demobilised from the Royal Navy and it was as a right-half that he made his early appearances. However, he showed such a liking for coming through to have a crack at goal that it was decided to convert him.



---

THE GREEN 'UN EVERY SATURDAY  
FOR CHILTERN'S COMMENTARY

---

209 GOALS



For the best beers

Pick

Flowers

Keg Bitter

and

Brewmaster

JOHN GROVES (left-half). Began last season as the club skipper in succession to Sid Owen and with a regular place assured in the half-back line. Began well, but things did not go too well for him later and he lost his place and the captaincy which went to Allan Brown. Later, he had some outings at inside-left which is the position he occupied when he first came to Luton from Derby as a youth of 15. At one time, there were serious thoughts about converting him into a centre-half, chiefly stemming from his dominance in the air, but the experiment did not prove too successful and was abandoned. A clever ball player who can be deadly accurate in his distribution, he is the son of the former Derby County and Portsmouth inside-forward, Arthur Groves, who now does some scouting for the Town in the Derbyshire area and it was through Dally Duncan that he came to Luton.



THE GREEN 'UN EVERY SATURDAY  
FOR ALL LOCAL SPORTS RESULTS



**CAMDEN**  
 FOR  
**CITROEN**  
 FROM  
**CAMDEN**  
 FOR  
**CITROEN**  
**CITROEN AGENTS**  
**AND STOCKISTS**  
 NEW AND USED CITROENS AVAILABLE  
 ALSO 500 OTHER USED CARS  
**CAMDEN MOTORS**  
 LEIGHTON BUZZARD :: Phone 2041  
 SEND FOR FREE LISTS

GOALS + 111 = 3 JUNE 28TH 1961  
 TRANSFERRED TO LINCOLN CITY

MIKE TRACEY (inside-forward). Former England amateur International who decided to make football a full-time career just before Christmas when the Town signed him from Crook Town, with whom he earned an Amateur Cup-winners medal the previous season. He scored twice in Crook's 3-2 success over Barnet. Took some time to settle down to full-time training and, at one stage, was put in the third team in order to enable him to gain confidence. This returned and he made his debut in the League side on February 13 when he led the attack against Sheffield Wednesday. Subsequently, he made five more appearances, mostly at outside-left, and during the tour of Czechoslovakia his displays there were an eye-opener. In fact he was the outstanding success of the trip and it may be that the Town will persevere with him on the wing. Is a fully qualified solicitor, but has not practised since he came to Luton.



THE GREEN 'UN EVERY SATURDAY  
 FOR FULL CLASSIFIED RESULTS



# THE GEORGE HOTEL LUTON

Telephone 654

LUTON'S PREMIER HOTEL

A.A. \*\*\* & R.A.C.

50 Bedrooms : Hot and Cold Running Water  
Central Heating in all rooms

Excellent accommodation available for  
**LUNCHEONS : DINNERS : DANCES**  
**WEDDING RECEPTIONS : SHERRY**  
**AND COCKTAIL PARTIES**

Business Meetings, etc., at reasonable terms

Garage Accommodation for 100 Cars

THE  
**NEW LOUNGE BAR**  
IS  
**NOW OPEN**

DANCING EVERY THURSDAY  
AND SATURDAY  
8 p.m. to Midnight

TRANSFERED TO : COVENTRY  
20TH OCT. 1960.

STUART IMLACH (outside-left). Close season signing from Nottingham Forest for a fee of about £8,000. Imlach is no stranger to the Town fans because he played against Luton when they appeared in the Cup Final at Wembley. A Scot from Lossiemouth, he first came south to join Bury when they were in the Second Division and then moved on to Derby County, from which club the Forest signed him five years ago. During his stay at the City Ground he made over 200 League appearances and scored nearly 50 goals. A fast, tricky winger, he can be a real handful for any defence and he has the added advantage of being able to play on either wing. Scotland recognised his worth by choosing him for their last World Cup party and he made four international appearances on the Continent. In signing him, the Town beat off quite severe competition from another club.



~~~~~  
**DIVISION I AND II REPORTS IN**  
**THE GREEN 'UN EVERY SATURDAY**  
~~~~~



21st June 1961 TRANSFERRED TO  
PETERBOROUGH FEE 2,000



And now . . . the  
**STANLEY MATTHEWS**  
**MOULDED**  
**Football Boot**

Greater flexibility; waterproof bonding; lighter weight; longer wear; studs vulcanised with sole; practically non-skid; no nails in sole or studs.

Boys' sizes 11-5  
Men's sizes 6-11



*Stanley Matthews*



**Moulded Football Boots**

LUTON INDUSTRIAL  
**Co-operative**  
SOCIETY LIMITED

**KEN HAWKES** (left-back). Rugged type of defender who spent six years in the back-ground at Kenilworth-road before receiving his first League chance two years last December. Once having got in, he stayed there and, in fact, made over 50 consecutive appearances before being rested during the hectic period before the Final, in which he played. Began last season in the first team, but was then omitted in favour of Alan Daniel who, in turn, was replaced by Brendan McNally for a spell. Daniel was the man in possession at the end of the season and it looks as if Hawkes faces an uphill fight to regain his place. A whole-hearted player who always gives of his best, Hawkes has had no other League club because he was a product of the prolific north-east nursery and was recommended to the Town by their scout in that area when he was playing for Shotton Colliery Welfare.



THE GREEN 'UN EVERY SATURDAY  
FOR UP-TO-DATE LEAGUE TABLES



Practice Established in Luton & London since 1938  
EYE DISEASES AND WEAK SIGHT TREATED  
consult

Your Local Eye Specialist

**MR. S. M. ALY**

168 OLD BEDFORD RD., LUTON

Phone : Luton 2281

CONSULTING HOURS FOR LUTON :  
EVERY MONDAY - - 11 a.m. TILL 7 p.m.  
EVERY SATURDAY - 11 a.m. TILL 6 p.m.



Also at 14 HERSCHEL ST.,  
SLOUGH, BUCKS

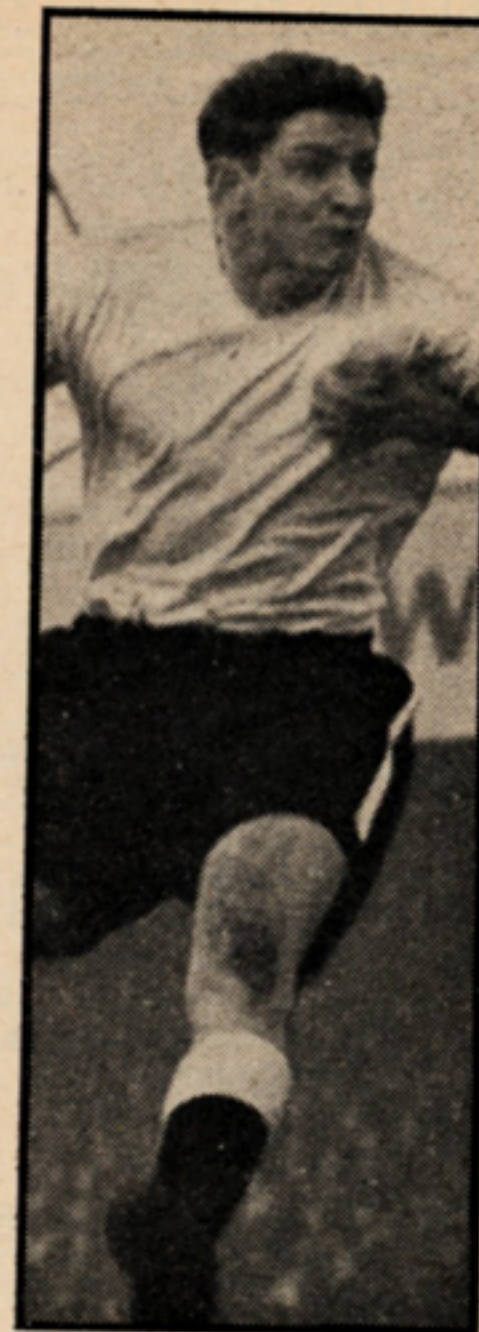
Phone : Slough 20695

London practice at 46 New  
Cross Road, S.E.14; and 3  
Plumstead High Street, S.E.18

London telephones :  
Woolwich 2964, New Cross 4758

18/11/60 TRANSFERRED TO ÷  
STIRLING ALBION

JOHN KILGANNON (inside-left). One of six players who was called upon to try to solve the problem outside-left position and, in all, he made 12 League appearances to add to his one of the previous season, mostly early on. Considering he was out of position, he did reasonably well, but he has not the speed to be a completely successful winger. Is obviously happier at inside-forward where he works the ball neatly. Begins his second full season with the club who paid a substantial fee for him to the Scottish Second Division club, Stenhousemuir. Before doing so, they had his form thoroughly checked and all reports were that he showed considerable promise. Made his League debut against Blackpool in April, 1959, and has been with the club on their last two Continental tours.



THE GREEN 'UN EVERY SATURDAY  
FOR ALL LOCAL SPORTS RESULTS



# LUTON TOWN F.C. 1st XI FIXTURES, 1960-61

F.A. CUP 4TH ROUND WUTON 3 MAN. C 1  
F.A. CUP 5TH ROUND. BARNSELEY 1 WUTON 0  
DIVISION II

Date	Opponents	Ground	Goals	
			For	Against
1960				
Aug. 20	Huddersfield T.	(A)	1	1
" 24	Portsmouth	(H)	1	3
" 27	Sunderland	(H)	1	3
" 31	Portsmouth	(A)	1	3
Sept. 5	Plymouth A.	(A)	1	2
" 7	Liverpool	(A)	1	2
" 10	Norwich C.	(H)	1	2
" 14	Liverpool	(H)	1	1
" 17	Charlton Ath.	(A)	1	1
" 24	Sheffield Utd.	(H)	1	1
Oct. 1	Stoke C.	(A)	1	2
" 8	Bristol R.	(H)	1	2
" 15	Derby Co.	(A)	1	4
" 22	Leyton O.	(H)	1	1
" 29	Scunthorpe Utd.	(A)	1	2
Nov. 5	(1) Ipswich T.	(H)	1	2
" 12	Brighton	(A)	1	1
" 19	Middlesbrough	(H)	1	1
" 26	(2) Leeds Utd.	(A)	1	1
Dec. 3	Southampton	(H)	1	1
" 10	Rotherham Utd.	(A)	1	1
" 17	Huddersfield T.	(H)	1	1
" 24	Lincoln C.	(A)	1	1
" 26	Lincoln C.	(H)	1	1
" 31	Sunderland	(A)	1	1

Date	Opponents	Ground	Goals	
			For	Against
1961				
Jan. 7	F.A. Cup, 3rd Round	NORTHAMPTON	4	0
" 14	Plymouth A.	(H)	3	2
" 21	Norwich C.	(A)	1	2
" 28	F.A. Cup, 4th Round	H. MAN. C	2	6
Feb. 4	Charlton Ath.	(H)	4	1
" 11	Sheffield Utd.	(A)	1	2
" 18	(5) Stoke C.	(H)	4	1
" 25	Bristol R.	(A)	1	4
Mar. 4	(6) Derby Co.	(H)	1	1
" 11	Leyton O.	(A)	1	2
" 18	(S.F.) Rotherham Utd.	(H)	2	1
" 25	Ipswich T.	(A)	1	2
" 31	Swansea T.	(H)	1	2
Apr. 1	Leeds Utd.	(H)	1	1
" 3	Swansea T.	(A)	1	3
" 8	Middlesbrough	(A)	1	2
" 15	Brighton	(H)	3	1
" 22	Southampton	(A)	2	3
" 29	Scunthorpe Utd.	(H)	0	0
May 6	F.A. Cup Final			

Leeds Utd. and Luton Town take the places of Aston Villa and Cardiff City, who were promoted. Southampton and Norwich City come in from the Third Division in place of Bristol City and Hull City, relegated.

## PARKWAY SERVICE STATION LTD.

Vauxhall and Bedford Van Retail Dealers Used Car Bargains

Cleveland Petrols — All Brands of Oils — Complete Service and Body Repair Shops

Sales : Tel. Luton 7744

PARK STREET, LUTON

Service : Luton 6861-2

P 42 W 15 D 9 L 18 F 71 49 A 79 P 39 POS 13TH



FOR YOUR NEXT OUTING

*Consult*

# COSTIN'S LUXURY COACHES

26 - 41 seater Luxury Coaches  
for hire for all occasions.  
Travel in Safety and Comfort.



**G. E. COSTIN LTD**

**67 WEST STREET**

**DUNSTABLE**

**Phone 30**

19<sup>th</sup> JUNE 1961 TRANSFERRED TO  
BRISTOL CITY



DAVID NOAKE (outside-left). One of the lesser known players because he has made only seven first team appearances, his debut being in the home match with Sheffield Wednesday on February 13. Fast and strong, he is still short of experience, as he showed only too plainly in his tussles with First Division full-backs. Was not really ready for such drastic promotion but, at the time, the Town were ready to try almost anything in order to fill the left wing berth adequately. Born in Dorchester, he attracted attention during the Western League club's F.A. Cup run which ended when Port Vale dismissed them. Shortly afterwards, Sid Owen made a special check on him and the result was that the Town agreed to pay a moderate sized fee for him and also arranged to pay Dorchester a visit, which they did late in the season.

THE GREEN 'UN EVERY SATURDAY  
FOR CHILTERN'S COMMENTARY



# W. T. ARCHER

A.M.Tech.I.

Automobile Engineer :: Battery Service

**TRINITY ROAD GARAGE**  
**LUTON - Telephone 52700**



*Specialists in all Types of  
Pistons and Piston Rings*



- \* Official Agents for CORD'S PISTON RINGS
- \* STOCKISTS of HEPOLITE RINGS
- \* PISTONS MACHINED and GROOVED
- \* FERODO BRAKE TESTING SERVICE

JULY 1961 TRANSFERRED TO -  
CHELMSFORD. (SOUTHERN LEAGUE)



ALAN COLLIER (goalkeeper). Former youth and schoolboy international, he joined the Town's ground staff immediately he left school and was signed as a professional at 17. Now 21, he has had a considerable amount of experience, including eight outings in the League team, five of them last season. At one time, he showed some sign of lack of confidence, but this returned and he played some fine games for the Reserves. Tall and well-built, he was born at Markyate.

SEAMUS DUNNE (right-back). Came right back to favour last season when he was first choice throughout and he missed only one League game, bringing his total aggregate close to the 300 mark. Has now completed 10 seasons with the club, whom he joined for a substantial fee from Shelbourne, the League of Ireland club. Not only did he regain his League team place, he was recalled by Eire, too, and went with them on their Continental tour, along with George Cummins. A fast, tenacious, defender.





# MANYWEATHERS FOR TYRE SERVICE

*All Makes and Sizes in Stock  
New and Retreads*



*Deferred Terms Available*

**PETROL and OIL  
SERVICE STATION**

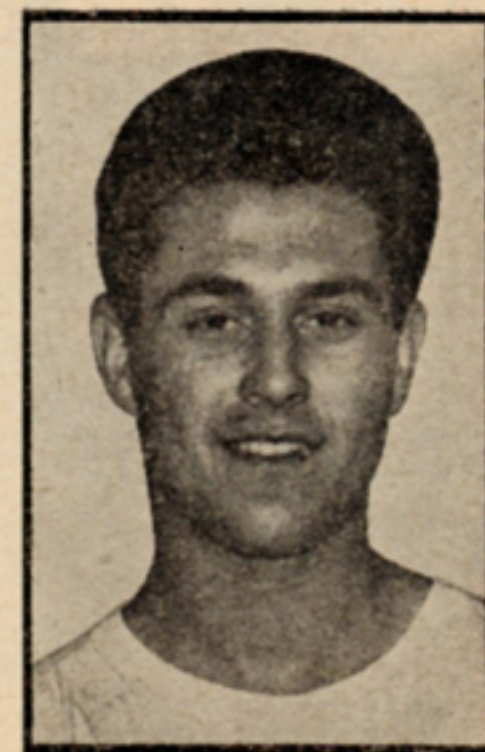


**157-165 CASTLE ST., LUTON**  
**Telephone : 1106**



**BRENDAN McNALLY** (right-back). The after-effects of the knee injury he received in the Cup Final limited his League appearances last season to six and he had a further operation which enabled the trouble to clear up and he played well in Dunne's place during the tour of Czechoslovakia. That injury deprived him of further Eire caps and it is to be hoped that he will meet with no further bad luck in this respect. Is in his fifth season with the club and, like Dunne, he came from Shelbourne.

**TOM BRICE** (right-back). Has yet to make his League debut, though he was taken on tour, but not used. Dunstable born, he was a member of Bedfordshire's youth team and also played for the county in the Southern Counties Amateur Championship. Later, he turned part-time professional and gained a regular place in the reserve team. A strong, rugged player, he has the confidence to make the grade in League football.



HAD TO GIVE UP 55 FOOTBALL  
OWING TO INJURY



# First choice for a first class job...

WALLPAPERS  
PAINTS  
VARNISHES  
BRUSHES  
GLASS

## OGDEN & CLEAVER

Manufacturers of

STUART  
HARD GLOSS

•  
GLAZING  
CONTRACTORS

•  
STUART STREET  
LUTON

Telephone : 746 (2 lines)

- Our Wallpaper Show-rooms are among the most modern in the Home Counties. Large range of high quality papers always in stock.

- Remember — we are specialists in all aspects of interior and exterior decorating and the advice of our trained technical staff is always at your disposal.

Hours of Business :  
Monday to Friday  
9 a.m. to 5.30 p.m.  
Saturdays 9 to 12 a.m.

Where good decorating begins



**ALAN DANIEL** (left-back). One of the most promising youngsters on the books, Daniel forced himself into first team recognition last season and had a spell of 13 matches before being omitted. Went back into the reserve team to make use of the experience he had gained and came back fresh to the League scene in the closing weeks. A fine positional player and an accurate user of the ball, he should make further progress this season. Is the son of former Town inside-forward Melville Daniel, and has been with the club since his early teens.

**GERALD KING** (left-back). Is also the son of a former Town player, Tom, who is now the groundsman. Stands over 6 feet and was a notable performer in schoolboy football. Since he joined the Town he has gravitated between outside-left and left-back, which seems a curious combination, but he has now settled down as a defender and has had quite a lot of experience in the Combination team. It was in this position that he made appearances for the Bedfordshire youth team.



TRANSFERED TO:  
BEDFORD SKEAGOE



# FOSTRIAN Supaslaks

Trade Mark



Cut and tailored by Foster craftsmen from fine Yorkshire woollens, Supaslaks give you style and quality at the lowest possible price. They're your best buy today.

*1 STAR	**2 STAR	***3 STAR
Pure worsted, various shades	Worsted or gaberdine, $\frac{1}{2}$ or all-round belt.	Worsted or gaberdine. Self supporting waist.
55/-	65/-	75/-

One of the many outstanding values in clothing obtainable only at . . .

**Foster  
Brothers**

MEN'S, YOUTHS' AND BOYS'  
OUTFITTERS SINCE 1876

22/24 GEORGE STREET, LUTON

GOALS 5-1111 = 4



ALWYN MCGUFFIE (right-half). Is nearing the end of his army service which has helped retard his progress because of the lack of full-time training facilities. Has been in the first team several times, but not during last season when, for quite a spell, his activities were confined to the "A" team. Regained his reserve team place towards the end of last season and was taken on the Czechoslovakian tour, after which he went on tour with the Army party. A Scot from Glasgow.

MICHAEL COLLINS (right-half). Made considerable strides last season when he finished his army service and was given the chance to make his League debut against Blackburn Rovers on Easter Monday. Tall, well-built player, he can also fill in at centre-half, the position in which he had a trial for England's youth team. Comes from Wellingborough and was a member of the Northants youth team, in which he first caught the attention of the Town.





**THEY'RE OFF**



**WIN  
MORE  
WITH**

**WILSON**

MEMBER OF B.P.A. AND N.S.L.

**NO LIMIT** on COMMISSIONS  
RECEIVED  
BY PHONE

PLUS

**$\frac{1}{3}$  ODDS a PLACE on ALL  
HDGP'S** 14 OR MORE RUNNERS

**TO AGENTS** We offer Top  
Commission  
**PRIVATE A'C's** Discount on  
Losing Balance

Write : 78 CROMWELL RD., LUTON  
Phone : LUTON 7611 (all lines)  
FOR 1960 RULE BOOK



**TERRY KELLY** (centre-half). Last season was his best ever because he made 31 appearances in the first team to add to the 45 he had to his credit previously, though those were spread over a number of seasons. For several years, he was stand-in for Sid Owen, having to be content with occasional outings in the senior side and he played a useful role last season. Is a dour type of player whom opposing centre-forwards find difficult to pass. Born in Luton, he played for Hitchin Town and Vauxhall Motors before joining the Town.



**KEITH UNDERWOOD** (centre-half). More should be seen of this dominating player this season, now that he has finished his national service. Played fairly regularly in the reserve team last season. A local, he was outstanding as a youth player and was captain of Bedfordshire when they won the F.A. County Youth Championship. Has also played at left-back, but his future lies at centre-half.

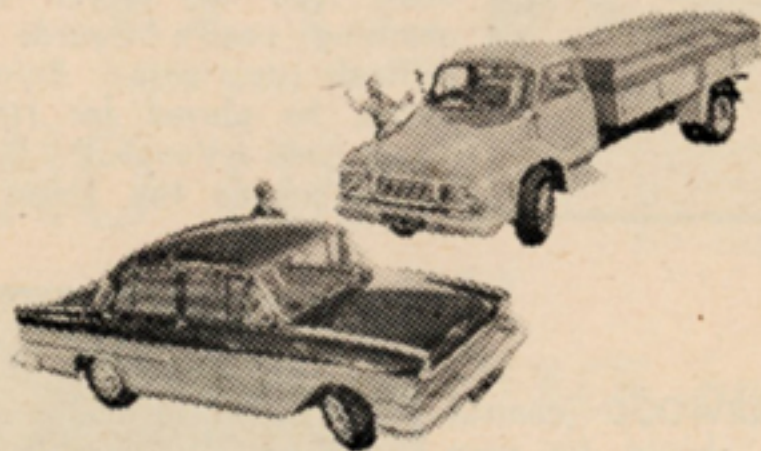
JULY 1961 TRANSFERRED TO  
BEDFORD (SOUTHERN LEAGUE)



# PLOWMANS

## for VAUXHALL

## and BEDFORD



FULL SALES & SERVICE FACILITIES

# Plowmans Ltd.

HITCHIN ROAD, LUTON

Phone 2226



DAVE PACEY (left-half). Had the mortifying experience of being injured in three consecutive matches. First trouble came during the summer when he played for England "B" in Germany and he was hurt again in the first match at Everton. On each occasion he was playing at centre-half but his next appearance was at centre-forward at Blackpool, where he badly damaged an ankle. Had a moderate spell at the end of which he was dropped, but after one game with the Reserves was re-instated in his old position and stayed there until the end of the season.

JACKIE WALKER (left-half). For a player of only 19, he has had a considerable amount of experience and, in view of the experiments that were made at the end of last season, it was somewhat surprising that he was not given a chance in the League team. A former schoolboy star in his native Co. Durham, he came to Luton when he was only 15½ and was signed as a professional immediately he reached the permitted age. An authoritative type of player with a flair for attack.



GIVEN UP & FOOTBALL  
63  
OWING TO INJURY



# **AEROMODELS (Luton)**

**59 WELLINGTON STREET  
LUTON, BEDS**

**Telephone 7858**



*THE FINEST MODEL SHOP IN THE HOME COUNTIES*



**HORNBY DUBLO, TRI-ANG & TRIX  
MODEL RAILWAYS**

**MECCANO & DINKY TOYS**

**A WONDERFUL RANGE OF Balsa  
& PLASTIC CONSTRUCTION KITS**

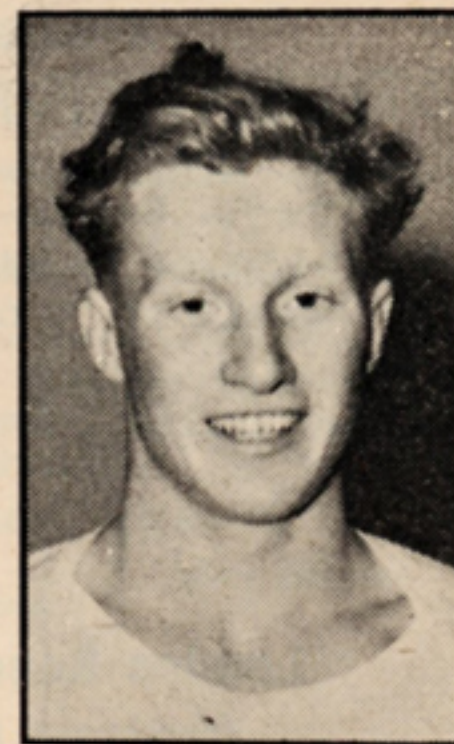


*Why not pay us a visit?*



**MELVYN JENKINS** (right-half). Has played in a variety of positions, ranging from centre-forward to wing-half, but now his career has been interrupted by national service. At one time, playing in the "A" team, he looked as if he might become a successful leader of the attack, but the fact that he is a part-time professional has not helped his progress. A determined type of player who could well make the grade when he has the chance to train full-time. Born at Bedford.

**MARK LOWNDES** (left-half). Comparative newcomer to the club because he was signed only last January as a part-time professional. Is completing his apprenticeship with a Luton firm. Born at Sunderland, he played for Ryhope Colliery Welfare, Co. Durham, and was recommended by the Town's scout in that area. So far, his experience has been limited to the "A" team, but good judges have a high opinion of his natural ability.





# GO BY BUS!



**ROUTE 212—Hourly Service between  
LUTON, BARTON, SHILLINGTON  
and HENLOW CAMP**

also Gravenhurst, Campton, Meppershall and  
Stondon

Route 205 — between

**LUTON, KIMPTON, CODICOTE**

Hourly service between Luton and Kimpton  
Monday to Saturday. No service on Sunday.

**Additional Saturday Afternoon Journeys**

ON ALL ROUTES Time Tables available on application

Excursions operated to all Luton Town F.C.  
home matches from Baldock, Letchworth,  
Walsworth and Hitchin

**Buses and Coaches for Private Hire**

Any Size Party

Local Depot:

Any Distance

**London Road, Henlow Camp**

Telephone: Henlow Camp 244



**DICK FOLWELL** (centre-half). Tall, up-standing player who was outstanding in youth football and who was still young enough to be eligible for the Town's youth team last season. Originally he was on the ground staff before he was signed as a professional and is regarded as highly promising. Comes from Irchester, in Northamptonshire.

**ALBERT McCANN** (inside-forward). At 18, this boy looks to have the potential of becoming a real star. An extremely clever ball player, he has been carefully nurtured and was given plenty of opportunity in the reserve team last season. Comes from Maidenhead where he was playing for a youth team when he was recommended to the Town. In the first instance, he was given a job in the club office and was offered professional terms immediately he became 17.



*11/11/60 TRANSFERRED TO WORKINGTON  
AUG 1961 TRANSFERRED TO COVENTRY*



# The Saturday Telegraph GREEN - 'UN

Published during the Football Season



OFFERS THE BEST  
SPORTING SERVICE  
OF ANY PAPER  
CIRCULATING IN  
THIS AREA



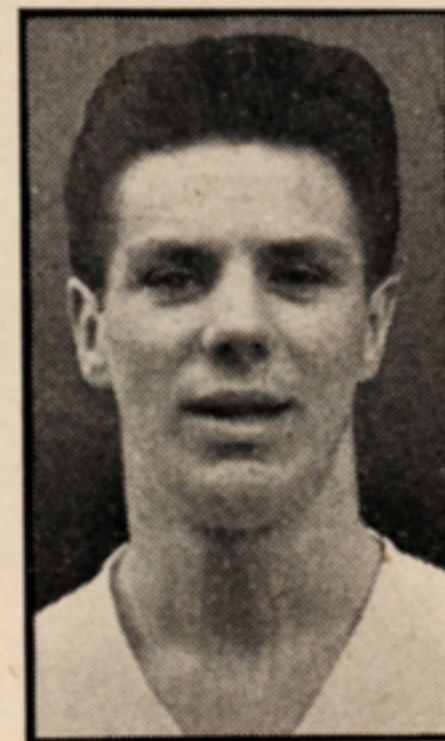
ALL THE SPORTS NEWS

TRANSFER TO  
COVENTRY



MIKE DIXON (centre-forward). Was unfortunate enough to fracture his knee-cap when playing for the Reserves at Southampton last season and had a long spell in hospital, followed by constant attendance at the rehabilitation centre. However, he made a splendid recovery and was back in harness by the end of the season. Is still doing his national service. A local, he played for Sundon Park in the Luton League before going on to Luton Town, after which he had spells as an amateur with Arsenal and Brighton.

HARVEY McCREADIE (centre-forward). Young Scot who played League football with Accrington Stanley before he was old enough to sign as a professional. After watching him closely last season, the Town paid £6,000 for his transfer when he was only 17½. Made his League debut in the away League match with Wolves, which was scarcely the sort of baptism for a youth and he was unfortunate enough to find Bill Slater in dominant form, with the result that he had very little opportunity.



1/11/60  
TRANSFERED TO WREXHAM



**W. H. COX**  
**WELLINGTON STREET**  
**LUTON**

for all your CINE and CAMERA  
requirements

Be sure to get  
the  
**GREEN - 'UN**  
every  
**SATURDAY NIGHT**  
*The Complete Sports Paper*



**GEORGE ANDREWS** (centre-forward). Youngster from the Birmingham area who was signed as a professional after having shown promising form in the club's lower teams as an amateur. Played mostly for the youth team and also appeared in the Hellenic League side. Strong player who has a keen eye for a scoring opportunity, he will probably be given the chance of more senior football this season.

**JOHN WARNER** (outside-left). Was signed as a professional immediately after having given an outstanding display in a mid-week friendly match early last season. Made a meteoric rise from the fourth team to the League XI, because he made his debut against Burnley on October 31. In the event, the occasion was a little too much for him and that was his only opportunity, though he appeared fairly regularly for the Reserves. Comes from Hemel Hempstead and is a part-timer.





# DOUBLE DIAMOND



works  
wonders

SUPPLIED BY:-

BENSKIN'S WATFORD BREWERY LTD.



**TOM KING** (Groundsman). Through the years the Town have tried to fit in former players with jobs on the staff and he has been in charge of the ground for four years. Joined the Town as a full-back from Bournemouth at a time when they were fighting for promotion to the Second Division. His playing career was cut short by an injury sustained during the first year of war-time football and he went to a local factory. When football was resumed after the war, he was employed as a part-time scout.

**EDDIE DUGGAN** (Assistant Coach). Continues in this capacity on a part-time basis and has had a long association with the Town, starting before the war when he played for them when in his early teens. Unfortunately, he was dogged by injuries which prevented him from fulfilling to the full his early promise. Left the Town to join Queen's Park Rangers and then followed spells in non-League football with Worcester City and Bedford Town. It was from the latter club that the Town signed him in order to use his experience playing alongside the youngsters in the "A" team.





# NIGHT & DAY BREAKDOWN SERVICE LIGHT & HEAVY

★ CRASH WORK SPECIALIST

★ INSURANCE REPAIRS

★

**SUNDON PARK**  
**MOTOR SERVICES**  
LUTON 53008



## CHILTERN YOUTH LEAGUE

President: Mr. P. G. Mitchell

Chairman: Mr. D. E. Long

Hon. Secretary and Treasurer: Mr. T. H. Brock,  
82 Crawley Green Road, Luton. Telephone: 3722

### FINAL TABLES 1959-60

#### 16-18 SECTION

	P	W	D	L	F	A	P
Cambridge U. ....	24	21	2	1	156	20	44
Redharts .....	24	19	2	3	128	24	40
Icknield .....	24	17	2	5	102	35	36
Biscot Mill .....	24	15	2	7	111	47	32
Stotfold .....	24	15	2	7	88	70	32
Pioneer B.C. ....	24	14	2	8	90	50	28
Vauxhall .....	24	12	4	8	96	56	28
Skefko .....	24	6	5	13	50	57	17
Royston .....	24	5	3	16	46	117	13
Stockwood P. ....	24	6	0	18	58	133	12
Letchworth B.B. ....	24	5	0	19	39	96	10
Sundon Park .....	24	4	0	20	48	148	8
Luton B.C. ....	24	4	0	20	32	144	8

#### 14-16 SECTION

	P	W	D	L	F	A	P
Icknield .....	22	20	1	1	132	32	41
*East Park .....	22	17	1	4	95	40	33
Redharts .....	22	15	0	7	89	40	30
Vauxhall .....	22	14	2	6	108	53	30
Stondon .....	22	12	3	7	105	53	27
Stockwood P. ....	22	11	4	7	114	49	26
Barton .....	22	11	2	9	118	63	26
Biscot Mill .....	22	10	0	12	73	85	20
Limbury B.C. ....	22	5	0	17	45	140	10
Pioneer B.C. ....	22	4	0	18	47	87	8
Luton B.C. ....	22	2	1	19	35	155	5
Waterlow Road .....	22	2	0	20	34	145	4

\* Two points deducted.



but after the match all agree

there is nothing like..

**WELLS Beer**

*Charles Wells of Bedford..of course!*

## BEDFORD TOWN'S FIXTURES

### SOUTHERN LEAGUE, PREMIER DIVISION

Aug.	20	Romford .....	H
"	23	Weymouth .....	A
"	27	Worcester .....	A
Sept.	1	Wisbech (S.L. Cup) .....	H
"	3	Folkestone .....	H
"	7	Wisbech (S.L. Cup) .....	A
"	10	.....	
"	15	Weymouth .....	H
"	17	Dartford .....	H
"	19	Wellington .....	A
"	24	Hereford .....	A
Oct.	1	King's Lynn .....	H
"	8	Cambridge City .....	A
"	15	Yeovil .....	H
"	22	.....	
"	29	Chelmsford .....	H
Nov.	5	Hastings .....	A
"	12	Gravesend .....	H
"	19	Tonbridge .....	A
"	26	Cheltenham .....	H
Dec.	3	Wisbech .....	A
"	10	Guildford .....	H
"	17	Romford .....	A
"	24	Headington .....	H
"	26	Headington .....	A
"	31	Worcester .....	H
Jan.	7	Bath .....	A
"	14	Folkestone .....	A
"	21	Wellington .....	H
"	28	Bath .....	H
Feb.	4	Dartford .....	A
"	11	Hereford .....	H
"	18	King's Lynn .....	A
"	25	Cambridge City .....	H
Mar.	4	Yeovil .....	A
"	11	Clacton .....	H
"	18	Chelmsford .....	A
"	25	Hastings .....	H
"	31	Boston .....	A
Apr.	1	Cheltenham .....	A
"	3	Boston .....	H
"	8	Tonbridge .....	H
"	15	Gravesend .....	A
"	22	Wisbech .....	H
"	26	Clacton .....	A
"	29	Guildford .....	A
May	6	.....	



# RESERVE TEAM FIXTURES

Date	Opponents	Ground	Goals	
			For	Against
1960				
Aug. 20	Coventry C.	(H)	3	2
" 27				
Sept. 1	Notts Co.	(A)	4	3
" 3	Colchester Utd.	(H)	3	2
" 10	Crystal Palace	(A)	4	3
" 13	Swansea T.	(A)	3	4
" 17	Plymouth A.	(H)	3	4
" 24				
Oct. 1	Reading	(H)	3	0
" 8	Bristol R.	(A)	3	4
" 15	Northampton T.	(H)	4	2
" 22	Shrewsbury T.	(A)	1	3
" 29	Millwall	(H)	2	2
Nov. 5	Southend Utd.	(A)	2	2
" 12	Fulham	(H)	2	0
" 19	Brentford	(A)	2	0
" 26	Aldershot	(H)	0	2
Dec. 3	Swindon T.	(A)	3	1
" 10	Bristol R.	(H)	3	0
" 17				
" 24	Peterborough Utd.	(H)	0	1
" 26	Peterborough Utd.	(A)	2	1
" 31	Notts Co.	(H)	5	2

# FOOTBALL COMBINATION (Div. II)

Date	Opponents	Ground	Goals	
			For	Against
1961				
Jan. 7	Q.P.R.	(A)	1	2
" 14	Colchester Utd.	(A)	1	4
" 21	Crystal Palace	(H)	2	1
" 28	Q.P.R.	(H)	5	2
Feb. 4	Plymouth A.	(A)	2	4
" 11	Swansea T.	(H)	2	4
" 18	Reading	(A)	1	1
" 25	Shrewsbury T.	(H)	5	1
Mar. 4	Millwall	(A)	2	0
" 11	Southend Utd.	(H)	3	1
" 18	Fulham	(A)	1	0
" 25	Brentford	(H)	2	4
" 31	Mansfield T.	(A)	3	3
Apr. 1	Aldershot	(A)	2	2
" 3	Mansfield T.	(H)	3	0
" 8	Swindon T.	(H)	3	1
" 15	Northampton T.	(A)	0	3
" 22	Coventry C.	(A)	0	3

## GUARDS OVERCOATS

Of Quality, Style  
and Comfort, re-  
maining true to the  
traditional stan-  
dards of good taste  
and Tailoring.

In our Showrooms  
you can inspect a  
wide range of these  
famous Overcoats  
at prices within the  
range of everyone.

**Lacey's**  
The House that Value Built

14 WELLINGTON ST.



# FINAL LEAGUE TABLES—1959-60

## DIVISION I

	P	W	D	L	F	A	P
Burnley .....	42	24	7	11	85	61	55
Wolverhampton Wanderers ...	42	24	6	12	106	67	54
Tottenham Hotspur .....	42	21	11	10	86	50	53
West Bromwich Albion .....	42	19	11	12	83	57	49
Sheffield Wednesday .....	42	19	11	12	80	59	49
Bolton .....	42	20	8	14	59	51	48
Manchester United .....	42	19	7	16	102	80	45
Newcastle United .....	42	18	8	16	82	78	44
Preston North End .....	42	16	12	14	79	76	44
Fulham .....	42	17	10	15	73	80	44
Blackpool .....	42	15	10	17	59	71	40
Leicester City .....	42	13	13	16	66	75	39
Arsenal .....	42	15	9	18	68	80	39
West Ham United .....	42	16	6	20	75	91	38
Manchester City .....	42	17	3	22	78	84	37
Everton .....	42	13	11	18	73	78	37
Blackburn Rovers .....	42	16	5	21	60	70	37
Chelsea .....	42	14	9	19	76	91	37
Birmingham .....	42	13	10	19	63	80	36
Nottingham Forest .....	42	13	9	20	50	74	35
Leeds United .....	42	12	10	20	65	92	34
Luton Town .....	42	9	12	21	50	73	30

## DIVISION II

	P	W	D	L	F	A	P
Aston Villa .....	42	25	9	8	89	43	59
Cardiff City .....	42	23	12	7	90	62	58
Liverpool .....	42	20	10	12	90	66	50
Sheffield United .....	42	19	12	11	68	51	50
Middlesbrough .....	42	19	10	13	90	64	48
Huddersfield Town .....	42	19	9	14	73	52	47
Charlton Athletic .....	42	17	13	12	90	87	47
Rotherham United .....	42	17	13	12	61	60	47
Bristol Rovers .....	42	18	11	13	72	78	47
Leyton Orient .....	42	15	14	13	76	61	44
Ipswich Town .....	42	19	6	17	78	68	44
Swansea Town .....	42	15	10	17	82	84	40
Lincoln City .....	42	16	7	19	75	78	39
Brighton .....	42	13	12	17	67	76	38
Sunderland .....	42	12	12	18	52	65	36
Scunthorpe United .....	42	13	10	19	57	71	36
Stoke City .....	42	14	7	21	66	83	35
Derby County .....	42	14	7	21	61	77	35
Plymouth Argyle .....	42	13	9	20	61	89	35
Portsmouth .....	42	10	12	20	59	77	32
Hull City .....	42	10	10	22	48	76	30
Bristol City .....	42	11	5	26	60	97	27

## DIVISION III

	P	W	D	L	F	A	P
Southampton .....	46	26	9	11	106	75	61
Norwich .....	46	24	11	11	82	54	59
Shrewsbury .....	46	18	16	12	97	75	52
Grimsby .....	46	18	16	12	87	70	52
Coventry .....	46	21	10	15	78	63	52
Brentford .....	46	21	9	16	78	61	51
Bury .....	46	21	9	16	64	51	51
Queens Park Rangers .....	46	18	13	15	73	54	49
Colchester .....	46	18	11	17	83	74	47
Bournemouth .....	46	17	13	16	72	72	47
Reading .....	46	18	10	18	84	77	46
Southend .....	46	19	8	19	73	70	46
Newport .....	46	20	6	20	80	79	46
Port Vale .....	46	19	8	19	80	79	46
Halifax .....	46	18	10	18	70	72	46
Swindon .....	46	19	8	19	69	78	46
Barnsley .....	46	15	14	17	65	64	44
Chesterfield .....	46	18	7	21	71	84	43
Bradford City .....	46	15	12	19	66	73	42
Tranmere .....	46	14	13	19	72	75	41
York .....	46	13	12	21	57	73	38
Mansfield .....	46	15	6	25	81	112	36
Wrexham .....	46	14	8	24	68	101	36
Accrington .....	46	11	5	30	57	123	27

## DIVISION IV

	P	W	D	L	F	A	P
Walsall .....	46	28	9	9	102	60	65
Torquay United .....	46	26	8	12	84	58	60
Notts County .....	46	26	8	12	107	69	60
Watford .....	46	24	9	13	92	67	57
Millwall .....	46	18	17	11	84	61	53
Northampton .....	46	22	9	15	85	63	53
Gillingham .....	46	21	10	15	78	69	52
Crystal Palace .....	46	19	12	15	84	64	50
Exeter .....	46	19	11	16	80	70	49
Stockport County .....	46	19	11	16	58	54	49
Bradford .....	46	17	15	14	70	68	49
Rochdale .....	46	18	10	18	65	60	46
Aldershot .....	46	18	9	19	77	74	45
Crewe Alexandra .....	46	18	9	19	79	88	45
Darlington .....	46	17	9	20	63	72	43
Workington .....	46	14	14	18	68	60	42
Carlisle .....	46	15	11	20	51	66	41
Doncaster .....	46	16	9	21	67	74	41
Barrow .....	46	15	11	20	77	87	41
Chester .....	46	14	12	20	59	77	40
Southport .....	46	10	14	22	48	92	34
Gateshead .....	46	12	9	25	58	86	33
Oldham .....	46	8	12	26	41	83	28
Hartlepool .....	46	10	7	29	59	109	27



## FOOTBALL COMBINATION

### DIVISION I

	P	W	D	L	F	A	P
Chelsea .....	34	23	5	6	80	36	51
Tottenham Hotspurs .....	34	22	3	9	92	51	47
Brighton .....	34	16	12	6	64	44	44
Charlton Athletic .....	34	18	5	11	73	57	41
Leyton Orient .....	34	14	13	7	68	51	41
Bournemouth .....	34	12	13	9	53	45	37
Arsenal .....	34	15	6	13	62	46	36
West Ham .....	34	15	6	13	63	84	36
Ipswich Town .....	34	13	6	15	70	78	32
Nottingham Forest .....	34	12	7	15	56	62	31
Leicester City .....	34	12	6	16	59	56	30
Birmingham City .....	34	13	4	17	64	60	30
Portsmouth .....	34	14	2	18	62	71	30
Southampton .....	34	10	8	16	49	68	28
Bristol City .....	34	12	4	18	56	71	28
Swansea Town .....	34	9	7	18	57	73	25
Luton Town .....	34	9	7	18	54	72	25
Southend United .....	34	7	7	19	30	88	21

## UNITED COUNTIES LEAGUE

	P	W	D	L	F	A	P
Dunstable Res. ....	34	24	7	3	131	52	55
Kempston Rov. ....	34	23	7	4	104	43	53
Shefford Town .....	34	22	4	8	110	51	48
St. Neots Res. ....	34	23	1	10	92	42	47
Wellingborough Res. ....	34	22	2	10	70	41	46
Northampton "A" ....	34	19	5	10	114	63	43
Rushden Res. ....	34	16	7	11	81	80	39
S. & L. Corby .....	34	18	1	15	93	84	37
Raunds Town .....	34	15	4	15	65	81	34
Kettering "A" .....	34	13	7	14	74	82	33
Wootton BC .....	34	14	5	15	71	84	33
Biggleswade Res. ....	34	14	2	18	88	79	30
Desborough Town .....	34	13	1	20	81	92	27
Finedon Town .....	34	11	5	18	72	88	27
Huntingdon Utd. ....	34	9	3	22	65	115	21
Bedford Ave. ....	34	5	5	24	50	102	15
Higham Town .....	34	3	6	25	52	130	12
British Timken .....	34	3	6	25	35	139	12

## METROPOLITAN LEAGUE

	P	W	D	L	F	A	P
Luton Town .....	38	24	6	8	100	61	54
Arsenal .....	38	21	9	8	108	52	51
Canterbury .....	38	21	8	9	99	62	50
Chelsea .....	38	21	6	11	104	55	48
Dunstable Town .....	38	22	5	11	94	66	47*
Bedford Town .....	38	20	4	14	72	79	44
Guildford City .....	38	16	11	11	87	69	43
Headington U. ....	38	18	5	15	79	87	41
Newbury Town .....	38	18	4	16	85	68	40
Tonbridge .....	38	14	12	12	60	53	40
Fulham .....	38	15	10	13	84	80	40
Eastbourne U. ....	38	12	14	12	77	77	38
Brighton "A" .....	38	14	6	18	67	86	34
West Ham U. ....	38	14	5	19	78	102	33
Windsor & E. ....	38	12	7	19	77	84	31
Dartford .....	38	12	6	20	78	101	30
Hastings Utd. ....	38	11	8	19	66	88	30
D'edcot Town .....	38	10	3	25	71	101	23
Haywards Heath .....	38	8	5	25	52	103	21
Crawley Town .....	38	9	2	27	52	116	20

(\* 2 points deducted. Rule 9g).

## LEAGUE & LEAGUE CUP SCORERS

H. Marriott (D'edcot Town) .....	31
Fenn (Bedford Town) .....	25
P. Smith (Canterbury City) ....	25
B. Liscoe (Dunstable Town) .....	25
Edmonds (Fulham) .....	23
B. Hart (Newbury Town) .....	23
Brackley (Chelsea) .....	22

## LONDON LEAGUE

	P	W	D	L	F	A	P
Tilbury .....	22	17	4	1	85	22	38
East Ham United .....	22	11	6	5	61	34	28
Wingate .....	22	11	6	5	57	43	28
West Thurrock .....	22	10	6	6	43	30	26
Arlesey Town .....	22	10	4	8	47	52	24
Barkingside .....	22	9	5	8	46	36	23
Bletchley United .....	22	7	9	6	50	42	23
Harlow Town .....	22	7	9	6	36	33	23
Epping Town .....	22	7	7	8	42	38	21
Beckenham .....	22	5	3	14	33	56	13
Hatfield Town .....	22	3	5	14	24	74	11
Baldock Town .....	22	2	2	18	19	83	6



# LUTON DISTRICT AND SOUTH BEDS LEAGUE

**President:** Major-General Sir Harold Wernher, G.C.V.O.

**Senior Vice-President:** Lady Zia Wernher

**Life Members:** Mr. P. Stevens and Mr. W. Pease

**Chairman:** Mr. R. B. Gibbard

**Vice-Chairman:** Mr. R. Cooper

**Hon. Secretary and Treasurer:** Mr. F. S. G. Moore,

35 Cowridge Crescent, Luton. Telephone: Luton 7475

**Hon. Press Secretary:** Mr. E. H. Pugh, Luton News

**Executive Committee:** Messrs. R. Cox, B. Taylor, A. E. Gale

## PREMIER DIVISION

	P	W	D	L	F	A	P
Stockwood Athletic .....	26	22	4	0	97	22	48
Belle Vue Rangers .....	26	18	4	4	108	38	40
Toddington Rovers .....	26	17	3	6	94	44	37
Grange Albion .....	26	16	4	6	98	39	36
Bells Park .....	26	16	4	6	97	51	36
Pioneer Corinthians .....	26	14	4	8	74	44	32
Beresford United .....	26	13	3	10	77	70	29
Whitecroft Rangers .....	26	11	1	14	77	80	23
Sundon Park .....	26	8	5	13	42	72	21
Caddington .....	26	9	2	15	69	87	20
Stopsley .....	26	8	1	17	50	84	17
Wilsden Athletic .....	26	6	0	20	51	127	12
Old Lutonians .....	26	3	1	22	25	109	7
Laporte .....	26	3	0	23	48	140	6

## DIVISION I

	P	W	D	L	F	A	P
Luton O.B. ....	28	21	2	5	174	63	44
Luton Albion .....	28	19	4	5	126	52	42
Jackson Athletic .....	28	19	4	5	108	58	42
Cockernhoe .....	28	17	5	6	95	63	39
Lilley Rangers .....	28	17	3	8	101	62	37
Luton Blue Star .....	28	15	2	11	143	75	32
Luton Spartans .....	28	14	4	10	118	72	32
B.B.O.B. ....	28	15	2	11	109	85	32
Leaside & Limbury .....	28	12	5	11	75	89	29
Walcot Athletic .....	28	9	7	12	78	90	25
Stopsley Reserves .....	28	9	5	14	61	94	23
Bidwell .....	28	6	6	16	54	97	18
Brown & Green .....	28	3	6	19	52	138	12
Stern tree .....	28	2	3	23	26	176	7
Luton Water .....	28	1	4	23	24	130	6

## DIVISION II

	P	W	D	L	F	A	P
Grange Albion .....	26	22	1	3	136	31	45
Electrolux .....	26	19	2	5	95	37	40
Parts United .....	26	17	4	5	133	69	38
Slapton Rovers .....	26	16	5	5	90	48	37
Heath United .....	26	15	5	6	105	60	35
West Park .....	26	16	2	8	72	51	34
Toddington Rovers .....	26	11	3	12	74	73	25
Harpندن "A" .....	26	12	0	14	75	100	24
St. Andrew's RH .....	26	9	4	13	73	75	22
Thermo Plastics .....	26	8	6	12	67	95	22
Luton Blue Star .....	26	9	1	16	69	107	19
B.B.O.B. "A" .....	26	5	1	20	52	124	11
Beresford United .....	26	2	2	22	55	140	6
Caddington "B" .....	26	2	2	22	36	124	6

## DIVISION III

	P	W	D	L	F	A	P
Luton Spartan "A" .....	28	24	2	2	169	25	50
Luton Albion .....	28	21	3	4	168	46	46
Luton Gas Works .....	28	21	4	4	143	54	45
Luton St. Mary's .....	28	16	5	7	104	68	37
Telecom Engineering .....	28	17	3	8	109	72	37
Offley .....	28	17	1	10	133	75	35
Stockwood Athletic .....	28	14	5	9	140	68	33
Linslade United .....	28	14	5	9	90	65	33
Neville Athletic .....	28	11	1	16	74	100	23
Harlington .....	28	8	5	15	71	114	21
Ringpark Rangers .....	28	9	2	17	67	91	20
Jackson Athletic .....	28	10	0	18	65	108	20
Laporte Reserves .....	28	2	4	22	42	193	8
Wilsden Athletic .....	28	3	1	24	55	151	7
Stern tree .....	28	2	1	25	38	238	5



## SOUTH MIDLANDS LEAGUE

President: Mr. H. Horsler  
Chairman: Mr. A. G. Joyce  
Hon. Secretary and Treasurer: Mr. F. C. Crain,  
6 Chandos Road, Luton. Telephone: 4575

### PREMIER DIVISION

	P	W	D	L	F	A	P
Ampthill Town .....	28	23	3	2	76	24	49
Stotfold .....	28	22	2	4	110	35	46
Skefko Athletic .....	28	18	6	4	69	38	42
Shillington .....	28	14	5	9	66	54	33
Stewartby Works .....	28	11	10	7	56	59	32
Harpenden Town .....	28	13	3	12	74	61	29
AC-Delco .....	28	12	3	13	66	62	27
Marston S. Rovers .....	28	11	5	12	73	82	27
Barton Rovers .....	28	12	2	14	66	65	26
Adeyfield Athletic .....	28	10	6	12	51	66	26
Leighton United .....	28	10	2	16	58	69	22
Napier English Electric .....	28	8	4	16	49	74	20
Kent's Athletic .....	28	6	7	15	60	78	19
Peartree O.B. ....	28	6	4	18	49	78	16
Waterlow's .....	28	1	4	23	41	119	6

### DIVISION I

	P	W	D	L	F	A	P
Sandy Albion .....	28	21	0	7	100	42	44
Electrolux .....	28	18	3	7	82	46	39
Eaton Bray United .....	28	18	1	9	83	51	37
Hunting Athletic .....	28	16	3	9	76	54	35
Commer .....	28	15	3	10	76	60	33
Old Lutonians .....	28	15	3	10	61	59	33
Royston Town .....	28	12	8	8	73	52	32
Totternhoe .....	28	12	3	13	70	58	27
Vauxhall Colts .....	28	11	5	12	61	55	27
Queen's Works .....	28	12	3	13	67	77	27
Langford .....	28	11	4	13	53	60	26
Dunstable Vauxhall .....	28	9	5	14	60	83	23
Houghton Regis .....	28	8	5	15	70	94	21
Bletchley L.M.S. ....	28	4	5	19	43	94	13
Cranfield United .....	28	2	1	25	14	104	5

## RESERVE SECTION — DIVISION I

	P	W	D	L	F	A	P
Stotfold .....	22	21	1	0	87	12	43
Harpenden Town .....	22	15	5	2	73	29	35
Electrolux .....	22	12	5	5	76	42	29
Ampthill Town .....	22	11	3	8	80	47	25
AC-Delco .....	22	10	4	8	63	65	24
Skefko Athletic .....	22	10	1	11	61	58	21
Kent's Athletic .....	22	7	4	11	51	57	18
Barton Rovers .....	22	7	4	11	45	65	18
Shillington .....	22	6	4	12	47	78	16
Adeyfield Athletic .....	22	6	3	13	38	70	15
Hunting Athletic .....	22	3	5	14	33	91	11
Queen's Works .....	22	1	7	14	44	84	9

### DIVISION II

	P	W	D	L	F	A	P
Napier English Electric .....	22	17	1	4	95	37	35
Sandy Albion .....	22	15	5	2	83	33	35
Eaton Bray United .....	22	17	1	4	84	36	35
Stewartby Works .....	22	11	4	7	61	46	26
Royston Town .....	22	9	4	9	56	65	22
Houghton Regis .....	22	10	0	12	52	51	20
Totternhoe .....	22	9	2	11	45	55	20
Commer .....	22	8	3	11	48	58	19
Marston S Rovers .....	22	7	2	13	63	86	16
Waterlow's .....	22	7	2	13	58	86	16
Peartree OB .....	22	6	2	14	58	91	14
Dunstable Vauxhall .....	22	1	4	17	28	87	6

Championship Shield: Winners Ampthill Town runners-up Electrolux,  
Reserve Section Knock-out: Winners Ampthill Town, runners-up  
Sandy Albion.

## HELLENIC LEAGUE

### PREMIER DIVISION

	P	W	D	L	F	A	P
Abingdon Town .....	32	22	6	4	96	29	50
Swindon Town "A" .....	32	22	2	8	95	44	45
Bicester Town .....	32	20	3	9	89	65	43
Luton Town Colts .....	32	19	3	10	100	64	41
Thatcham .....	32	18	4	10	92	59	40
Hungerford Town .....	32	17	6	9	95	81	40
Headington United .....	32	13	9	10	98	70	35
Witney Town .....	32	13	7	12	82	71	33
Stokenchurch .....	32	16	1	15	79	78	33
Thame United .....	32	14	4	14	84	76	32
Newbury Town .....	32	14	4	14	68	78	32
Wallingford Town .....	32	13	4	15	64	86	30
Pressed Steel (C) .....	32	11	3	18	59	97	25
Amersham Town .....	32	9	4	19	60	93	22
Kidlington .....	32	9	4	19	64	106	22
Wantage Town .....	32	5	3	24	52	120	13
Chippington Norton Town ...	32	2	3	27	43	103	7



## BEDFORDSHIRE FOOTBALL ASSOCIATION

President: Lord Luke of Pavenham

Hon. Secretary and Treasurer: Mr. A. D. McMullen,  
37, Halfway-avenue, Luton. Telephone: Luton 52765.

### LAST SEASON'S CUP-WINNERS

Professional: Luton Town

Senior: Dunstable Town

INTERMEDIATE: Stotfold Reserves

Junior: Hockliffe

Youth Cup (under 18): Redharts

Youth Cup (under 16): Stockwood Athletic

### BEDFORDSHIRE COUNTY CUP DATES

#### SENIOR

Preliminary Round .....	October	15
First Round .....	November	19
Second Round .....	December	3
Semi-Finals .....	February	4

#### INTERMEDIATE

Preliminary Round .....	September	24
First Round .....	October	29
Second Round .....	November	26
Third Round .....	December	31
Semi-Finals .....	January	28

#### JUNIOR

Extra Preliminary Round .....	September	10
Preliminary Round .....	October	1
First Round .....	November	5
Second Round .....	November	26
Third Round .....	December	24
Semi-Finals .....	December	31

#### YOUTH CUPS (under 18)

Preliminary Round .....	September	24
First Round .....	October	22
Second Round .....	November	12
Third Round .....	December	24
Semi-Finals .....	December	31

#### (Under 16)

Preliminary Round .....	September	10
First Round .....	October	15
Second Round .....	November	5
Third Round .....	December	3
Semi-Finals .....	January	7

IN BEDFORDSHIRE . . .

The largest range of  
Pocket and Table Lighters

INCLUDING . . .

The new Ronson Windmaster  
and Victor Gas Models

MAY BE SEEN AT . . .

**COVINGTONS**

5 Cheapside

(Opposite Blundells)

## ACTION PICTURES

of the

TOWN'S GAMES

appear weekly in the

**PICTORIAL**  
**EVERY TUESDAY**



# LUTON SCHOOLS' FOOTBALL ASSOCIATION

## OFFICIALS 1960-61

**CHAIRMAN:** Mr. G. Ley

**Hon. Secretary:** Mr. I. C. Moyle,  
22, Leagrave Road, Luton. Tel. 51597 (Sch)

**Hon. Treasurer:** Mr. J. J. Hackett,  
39, Manton Drive, Luton. Tel. 5572 (Home), 51169 (Sch)

**Wix Trophy Hon. Treasurer:** Mr. H. B. Chillington,  
341, New Bedford Road, Luton.

The 1959-60 season was one of mixed fortunes for teams representing Luton Schoolboys. After losing the Seaward Trophy during the last minutes of the game against Tottenham in the final game of the previous season, there were high hopes that the team would go far in last season's E.S.F.A. Competition.

This view was given a fillip when the first game ended in a 10-1 victory, and the divisional final was won 4-3 after extra time to put Luton amongst the last 64 for the first time since the 1956-57 season.

The first game of the competition proper put an end to their aspirations for another year, as Hackney won by the only goal at Kenilworth Road.

In the Corinthian Shield, Luton disposed of the holders, East Ham, by the only goal on the last day of October but, after a long lay-off, were no match for West Ham, losing by the biggest margin for some years.

The Under 14 XI competed in the Sun Shield, and after defeating Southall 7-4 in the second round disappointed against Forest Schools, losing 3-9.

This team also competed for the Seaward Trophy and gave a fighting display in gaining a half-share after a 4-4 draw with Birmingham.

## LEAGUE FOOTBALL

There was a major change in the constitution of the Senior Leagues as the 1st and 2nd Year Leagues were combined to form a new Intermediate League. Stopsley performed a "double," winning both Senior and Intermediate by convincing margins.

The Junior League West was annexed by Leagrave by the astounding margin of 10 points. The Eastern Section, was a much closer affair with Farley winning by two points. The Junior League championship went back to the Western Section by an aggregate of 4-2.

In the Senior Wix Trophy two Luton sides met in the semi-finals and after a replay Old Bedford Road defeated Icknield to qualify for the final which St. Michael's, Watford, won.

In the Junior Wix Trophy, only Denbigh-road survived until the second round where they lost 3-6.

Six Luton boys played for Bedfordshire against Surrey and thus qualified for county badges.

The officials of the Luton Schools' F.A. readily acknowledge their indebtedness to the Luton Town F.C. for the use of the ground and the facilities which they have enjoyed during the season.

# LEAGUE TABLES, 1959-60

## SENIOR LEAGUE

	P	W	D	L	P
Stopsley .....	14	12	1	1	25
Beech Hill .....	14	8	2	4	18
Old Bedford Road .....	14	7	4	3	18
Icknield .....	14	8	0	6	16
Surrey Street .....	14	5	3	6	13
Denbigh Road .....	14	5	2	7	12
Challney .....	14	4	2	8	10
Rotheram .....	14	0	0	14	0

## INTERMEDIATE LEAGUE

	P	W	D	L	P
Stopsley .....	14	12	0	2	24
Challney .....	14	10	0	4	20
Beech Hill .....	14	8	3	3	19
Rotheram .....	14	6	3	5	15
Old Bedford Road .....	14	6	2	6	14
Icknield .....	14	3	2	9	8
Denbigh Road .....	14	1	4	9	6
Surrey Street .....	14	0	6	8	6

## JUNIOR LEAGUE WEST

	P	W	D	L	P
Leagrave .....	14	13	1	0	27
William Austin .....	14	8	1	5	17
Dunstable Road .....	14	5	5	4	15
Beechwood .....	14	6	2	6	14
Denbigh Road .....	14	5	3	6	13
St. Joseph's .....	14	6	1	7	13
Maidenhall .....	14	4	4	6	12
Norton Road .....	14	0	1	13	1

## JUNIOR LEAGUE EAST

	P	W	D	L	P
Farley .....	14	11	1	2	23
Stopsley .....	14	10	1	3	21
Ramridge .....	14	8	2	4	18
Hart Hill .....	14	7	3	4	17
Hitchin Road .....	14	5	4	5	14
St. Matthew's .....	14	3	3	8	9
Tennyson Road .....	14	1	3	10	5
Queen Square .....	14	1	3	10	5



## LUTON AND DISTRICT WEDNESDAY LEAGUE

President : Mr. A. J. Smith  
 Vice-President : Mr. J. C. Gosling  
 Chairman : Mr. J. E. Lake  
 Hon. Secretary : Mr. R. A. Lowther  
 10 Devon Road, Luton.

### LEAGUE TABLE, 1959-60

	P	W	D	L	F	A	P
R.A.F., Stanbridge .....	12	10	1	1	85	22	21
United Counties .....	12	9	1	2	64	21	19
Beds Police, South .....	12	7	4	1	52	19	18
R.A.S.C., Kempston .....	12	4	1	7	32	69	9
R.A.F., Edlesborough .....	12	3	1	8	33	69	7
Beds Police, North .....	12	2	2	8	37	56	6
Luton Corporation Transport	12	2	0	10	20	67	4

### LEAGUE CUP TABLE

	P	W	D	L	F	A	P
R.A.F., Stanbridge .....	8	6	1	1	32	11	13
Beds Police, South .....	8	4	3	1	25	12	11
United Counties .....	8	4	3	1	32	23	11
R.A.F., Edlesborough .....	8	1	1	6	22	42	3
Beds Police, North .....	8	0	2	6	16	47	2

In this competition both Luton Corporation Transport and R.A.S.C., Kempston, withdrew from the beginning. In the final play-off at Shefford, Beds Police, South, won the cup.

R.A.F., Stanbridge, were the winners of the knock-out cup.

### CHARITY CUP COMPETITION

This is a charity cup which was played for annually between a Combined League XI and Vauxhall Motors for both the Luton Old People's Welfare and LuDun. The competition was not staged last season owing to the fact that it was not possible to raise a team from the League.

A perpetual trophy was presented to Vauxhall Motors in the season 1957-58 for winning the cup on three consecutive occasions.

The original League Shield and Cup were lost, and both trophies were replaced, and some of the records are missing.

### REFEREES

B. Setchell, 11 Littlefield Road, Luton.  
 J. Smith, 79 Hollybush Road, Luton.  
 B. Smith, 59 Fallowfield, Luton.  
 A. Mann, 6 Enslow Close, Caddington, Beds.  
 B. R. Brandon, 20 Whitethorn Way, Luton.  
 Flt./Lt. W. Beadle, R.A.F., Stanbridge.  
 W.O.II Pittman, R.A.S.C., Kempston.

## SECRETARIES OF FOOTBALL CLUBS IN SOUTH BEDS

Alford Athletic.—W. J. Lee, 83 Briery Way, Hemel Hempstead.  
 Ampthill Town.—H. E. Hoskins, 16 Oliver Street, Ampthill.  
 AC-Delco.—S. Chappie, AC Delco Sports and Social Club, Dunstable.  
 Tel. 1166.  
 Barton Rovers.—D. Horsler, 47 Hexton Road, Barton. Tel. Hexton 398  
 Belle Vue Rangers.—R. Morris, 191 Westfield Road, Dunstable.  
 Bel's Park.—J. T. Phillips, 31 Cades Close, Luton.  
 Beresford United.—P. J. Moran, 77 Littlefield Road, Luton.  
 Bidwell.—G. Tomlin, 7 Townsend Terrace, Houghton Regis.  
 Blue Star.—E. G. Bird, 77 Hollybush Road, Luton.  
 Boys' Brigade O.B.—D. A. Dellar, 16 Stoneygate Road, Luton  
 Brown and Green.—N. Cooper, 41 Kingsbury Gardens, Dunstable.  
 Brache Sparta.—R. E. Peck, 15 Woodford Road, Dunstable.  
 Caddington.—L. Upton, 29 Dunstable Road, Caddington.  
 Chipperfield.—M. Croft, 4 Croftfield, Chipperfield.  
 Cockernhoe.—D. Prutton, 3 Elm Tree Avenue, Cockernhoe.  
 Commer (Luton).—M. J. Eastaff, 37 Felix Avenue, Luton.  
 Dunstable Town.—S. Smith (manager), 18 Finsbury Road, Luton.  
 Electrolux.—R. Hinton, 4 Wodecroft Road, Luton.  
 Eaton Bray.—F. Ashton, 17 Totternhoe Road, Eaton Bray.  
 "E" Division, Bedfordshire Police.—R. A. Lowther, Police Station, Luton.  
 Glendale.—A. Lightfoot, 35 Ferndale Road, Luton.  
 Grange Albion.—K. J. Hawkins, 21 Avebury Avenue, Luton.  
 Harlington.—K. Giles, 38 Wingate Road, Harlington.  
 Harpenden Town.—P. W. Day, 6 Lyndhurst Close, Harpenden.  
 Heath United.—E. F. Dibden, 6 Linslade Road, Heath-and-Reach.  
 Hemel Hempstead United.—E. Lawson, 32 Brickmakers' Lane, Hemel Hempstead.  
 Hayward-Tyler.—J. E. Waller, 62 Waverley Road, Harpenden.  
 Hunting Athletic.—R. E. Harris, 18 Field End Close, Luton.  
 Houghton Regis.—J. Ashton, 28 Mann Park, Houghton Regis.  
 Jackson Athletic.—Football Secretary, Jackson Recreation Club, Dallow Road, Luton.  
 Kingston Rovers.—Mrs. J. Green, 172 North Street, Luton.  
 Laporte.—R. S. Warner, Research Dept., Laporte Ltd., Kingsway Luton.  
 Leaside and Limbury.—S. J. Chapman, 22 Wordsworth Road, Luton.  
 Leagrave and Limbury B.L.—J. A. Cocks, 17 Holland Road, Luton.  
 Lilley Rangers.—D. W. Payne, 5 Hexton Road, Lilley.



**Linslade United.**—A. J. Rimington, 69 Stoke Road, Linslade.  
**Luton Gasworks.**—S. Hill, 17 Bradley Road, Luton.  
**Luton Old Boys.**—C. W. Stockbridge, 10 Vicarage Street, Luton.  
**Luton Spartans.**—H. Smith, 3 Dallow Road, Luton.  
**Luton St. Mary's.**—B. E. Curl, 36 Newcombe Road, Luton.  
**Luton Albion.**—L. Simpson, 36 Ashburnham Road, Luton.  
**Napier/Eng. Electric.**—A. J. Hines, c/o English Electric, Luton.  
**Neville Athletic.**—W. A. Parsons, 100 Toddington Road, Luton.  
**Old Lutonians.**—J. A. Maclean, 45 Manor Road, Toddington.  
**Offley.**—A. Eaton, 6 Lawns Close, Offley.  
**Parts United.**—J. Brandham, 110 Milton Road, Luton.  
**Pioneer Corinthians.**—H. G. Metcalf, 37 Woodfield Green, Downside Estate, Dunstable.  
**R.A.F. Edlesborough.**—Football Secretary, R.A.F. Edlesborough.  
**R.A.F. Henlow.**—Football Secretary, R.A.F. Henlow.  
**R.A.F. Leighton Buzzard.**—23 Group HQ., R.A.F. Leighton Buzzard.  
**Redhart.**—J. V. Kellett, 64 Bursland, Letchworth.  
**Ringpark Rangers.**—M. Horne, 41 Tythe Road, Luton.  
**Royston Town.**—E. H. Cain, 9 Heath Avenue, Royston.  
**Shillington.**—S. J. Tingey, 39 High Street, Shillington.  
**Shefko Athletic.**—G. Tomlin, 346 Leagrave Road, Luton. Tel. 5700 (Works).  
**Slapton Rovers.**—A. W. Harrington, Downs View, Slapton, Leighton Buzzard.  
**St. Andrew's Robin Hoods.**—P. J. Mardle, 4 Front Street, Slip End.  
**Sternree.**—E. Leather, 27 Castlecroft Road, Luton.  
**Stewartby.**—W. E. Crosbie, 67 Stewartby Way, Stewartby.  
**Stopsley.**—I. Lawrence, 655 Hitchin Road, Luton.  
**Stockwood Athletic.**—K. G. Kilby, 43 Winsdon-road, Luton.  
**Stony Stratford T.**—E. Hellenburgh, 18 Fankston Avenue, Stony Stratford.  
**Sundon Park.**—S. Lersch, 53 Harcourt Street, Luton.  
**Telecom Engineering.**—W. J. Manser, 345 Ashcroft Road, Luton.  
**Thermo Plastics.**—A. Jones, c/o Thermo Plastics, Luton Road, Dunstable.  
**Toddington Rovers.**—R. E. Stanley, 24 Preston Road, Toddington.  
**Totternhoe.**—R. G. Bates, 171 Castle Hill Road, Totternhoe. Tel. Eaton Bray 337.  
**Vauxhall Motors.**—K. Edge, Vauxhall Motors Recreation Club. Tel. Luton 2600. Home address: 69 Felmersham Road, Luton. Tel. 7183.  
**Vauxhall (Dunstable).**—J. Odell, 55 Maidenbower Avenue, Dunstable.  
**Walcot Athletic.**—D. K. Richards, 140 Farley Hill, Luton.  
**West Park.**—V. E. Keech, 26 Dudley Street, Luton.  
**Wilsden Athletic.**—A. B. Gatward, 12 St. Catherine's Avenue, Luton.  
**Waterlow's.**—E. J. Bell, c/o Waterlow's, Dunstable. Tel. 96.

## ADDRESSES OF REFEREES IN SOUTH BEDS

**South Beds Society of Referees:** President, Mr. Fred Hawkes; Chairman, Mr. J. J. Hackett; Hon. Secretary and Treasurer, Mr. H. J. Foster, 6 Fallowfield, Luton; Hon. Supplies Secretary, Mr. T. Brock, 82 Crawley-road, Luton; Hon. Press Secretary, Mr. L. H. Holland, 13 Ridgeway, Kensworth.

Allen, P. S., 29 Evelyn-road, Dunstable.  
 Allan, L., 5 Hillcroft Close, Luton.  
 Anderson, G. A., 130 Baker Street, Luton.  
 Ayres, L., 65 Fallowfield, Luton.  
 Ashley, D., 21 Part Street West, Luton.  
 Bangs, D. J., 6 Poets Green, Luton.  
 Bodger, C., 15 Moat Lane, Luton.  
 Bone, D., 10 Finsbury Road, Luton.  
 Bland, D., 24 Briar Close, Luton.  
 Brace, R., School House, Lower Stondon.  
 Bullard, D. L., 14 Hillside Road, Luton.  
 Bush, V. H., 11 Littlechurch Road, Luton.  
 Bullman, A. R., 56 Sunningdale, Luton.  
 Bannister, A., C. W. S. Flat, Wingate Road, Luton.  
 Barker, R., 67 Fallowfield, Luton.  
 Brandon, B. R., 20 Whitethorn Way, Luton.  
 Burgess, R. B., 10 Moat Lane, Luton.  
 Burdett, G. S., 15a Lewsey Road, Luton.  
 Bandey, K. W., 18 Newbury Lane, Silsoe.  
 Cann, M. J., 103 Wodecroft Road, Luton.  
 Cooper, E. W. T., 6 Reeves Avenue, Luton.  
 Connor, A. J., 77 Pennine Avenue, Sundon Park.  
 Clarke, J. D., 126 Putteridge Road, Stopsley.  
 Cole, W. C., 48 Cowridge Crescent, Luton.  
 Crawford, R. G., 48 Somerset Avenue, Luton.  
 Cherry, J. R., 19 Birches Close, Hockliffe.  
 Devlin, A., 37 Rowelfield, Luton.  
 Devlin, J., 107 Biscot-road, Luton.  
 Dixon, M., 31 Hawthorn Crescent, Luton.  
 Doran, M., 31 Clevedon Road, Luton.  
 Edmunds, E. A., 94 Abbotswood Road, Luton.  
 Elsom, D. E., 11 Grampian Way, Sundon Park.  
 Ellis, L. A., 111 Chesford Road, Luton.  
 Evans, E. W., 21 Highfield Road, Leighton Buzzard.  
 Fullbrook, R. F., 12 Tythe Road, Luton.  
 George, T., 99 Waller Avenue, Luton.



Graham, P., Laundry House, Luton Hoo.  
 Gates, R. S., 53 Hayhurst Road, Luton.  
 Hancock, D. J., 22 Stratford Road, Luton.  
 Higgs, D., 23 St. Peter's Road, Luton.  
 Holland, L., 13 Ridgway, Kensworth.  
 Howes, D., 52 Norman Road, Barton.  
 Jeffs, R. C., 33 Stratton Gardens, Luton.  
 Lowther, R. A., 10 Devon Road, Luton.  
 Leary, G., 43 Church Street, Dunstable.  
 Mann, A. W. J., 6 Enslow Close, Caddington.  
 McEvoy, J., 41 Claremont Road, Luton.  
 Miller, W. G. E., 5 Black Swan Lane, Luton.  
 Mouse, J. G., 470 New Bedford Road, Luton.  
 Paton, J. A., 12 Duncombe Drive, Dunstable.  
 Piddock, D. J., 138 Hayhurst Road, Luton.  
 Payne, G. S., 73 Alexandra Avenue, Luton.  
 Pinion, D. J., 5 Newark Road, Luton.  
 Parrott, H. W., 28 Kingscroft Road, Dunstable.  
 Ratcliffe, H. J., 20 Cowridge Crescent, Luton.  
 Randall, N. A., 22 Western Way, Dunstable.  
 Read, W. E., 17 Stratton Gardens, Luton.  
 Rice, S. D., 104 Stanford Road, Luton.  
 Setchell, B. S., 11 Littlefield Road, Luton.  
 Smart, A. F., 80 Neville Road, Luton.  
 Smith, B., 57 Fallowfield, Luton.  
 Smith, D. A., 40 Farley Hill, Luton.  
 Smith, J., 73 Hollybush Road, Luton.  
 Smith T., 15 Hornsby Close, Luton.  
 Southam, I., 82 Crawley Green Road, Luton.  
 Sharp, M., 33 Douglas Road, Luton.  
 Startin, K. J., 19 Collingtree, Luton.  
 Thompson, H., 34 Hartley Road, Luton.  
 Thurley, E. N., 82 Faringdon Road, Luton.  
 Trend, R. K. J., 180 Station Road, Lower Stondon.  
 Trevey, K. J., 24 Salfield Crescent, Luton.  
 Waller, J., 79 Chesford Road, Luton.  
 Walters, W. J., 132 Chester Avenue, Luton.  
 Wallis, A., 60 Manor Park, Houghton Regis.  
 Williams, K., The Crown, Sundon.  
 Williams, N. J., 74 Douglas Crescent, Houghton Regis.  
 Williamson, K., 55 Rosslyn Crescent, Luton.  
 Wilkinson, J. C., 27 Wood Green Road, Luton.  
 Wells, D. F. C., 16 Elmore Road, Luton.  
 Ward, R. A., 157 Chester Avenue, Luton.  
 Wright, F. P., 7 Bampton Road, Luton.  
 Wynd, A. C., 20 Collingtree, Luton.

The  
 big shop  
 with the  
 wide choice  
 of  
good clothes



Charles  
**Mares**

Men's and Boys' Wear

64 George Street - Luton

Tel. 625



MUSIC and RECORDS

The  
CENTRE *of the* FIELD



for  
HOME ENTERTAINMENT

RADIO and T/V