

FOOTBALL HANDBOOK

Published in association with the GREEN 'UN

Slippery Downward Progress Was Halted. Can Town Build Up From There?

WHEN a team begins to slide as did the Town from the pinnacle of the First Division and the Cup Final to Division III merely four years later, the biggest problem is to halt that slippery progress.

Indeed, for a long time last season it seemed as if the ignominy of the Fourth Division and all its attendant discomforts, was opening its doors wide for the Town whose chances at Easter of escaping further relegation, did not look at all bright.

Then, suddenly, things began to run for them. They gained a draw at Nottingham on the Thursday before Good Friday, netted five points in all over the holiday and went on to play their last nine matches without defeat and to collect 15 points in the process.

That it was a wonderful transformation goes without saying but, possibly, it heralded the fact that the players had at last become attuned to the needs of the Third Division which, in some ways, are more onerous than those in Division II.

At least, we must hope that this is the case because, if so, we can expect a start to the new season approximating to the way in which they ended the last.

Certainly, the players should not lack confidence in the task that awaits them, especially if young John O'Rourke, who hit the headlines consistently after being transferred from Chelsea, finds his shooting boots without waste of time.

At 19, O'Rourke is a wonderful prospect and his 22 goals in 23 League matches must have made Chelsea chief, Tommy Docherty, wonder whether he had made a mistake, especially as he seems to be having a centre-forward problem of his own at the moment.

Without any doubt at all, the Town owed a great debt to O'Rourke, but this was no one-man show. In those closing weeks, everyone pulled his weight to the full, the all-important team spirit could not have been better and everything should augur well for the start of the new season.

Only cloud on the horizon, so far as I can see is if the club are unlucky enough to run into a spate of injuries. Defensive cover looks adequate enough, but there must be a certain amount of anxiety about whether there are sufficient resources in reserve for the attack.



After a desperate struggle, Manager Bill Harvey managed to stop the Town's head-long downward slide.

Now he has a new two years contract and a certain amount of optimism that his team can make a much better start this time.

Resigned 21/11/64

Manager Bill Harvey says that he is not losing any sleep over the situation and no-one is more acutely aware than he is that he is somewhat thin on the ground so far as reserves for the attack are concerned.

However, he is pinning his faith on the up-and-coming youngsters and says that, in not spending money during the summer, he has left himself with licence to buy should the need arise.

Relegation, followed by the lack of success of the team in the early days of their return to the Third Division, caused widespread criticism which sparked off another bid by the so-called "ginger group" to gain representation on the Board.

This was defeated through the perfectly fair means of calling for a poll vote, but was followed by a change in the chairmanship and the vice-chairmanship.

Of course, these are purely domestic issues, decided by the Board themselves and, to be fair to everybody concerned, it was probably no more than coincidence that the new appointments of former club captain, Tom Hodgson as Chairman, and Director S. W. W. Bigg as vice-Chairman, were followed shortly afterwards by an improvement in the results achieved.

Having accomplished his main task which was to halt the Town's downward trend, Manager Harvey signed a contract for a further two years and although he is not one to make optimistic prophecies, I know that he is hoping for much better things in the opening stages of the season.

With such a rush of matches at the start—the Town are unlikely to be without a mid-week game before the end of October—it is imperative that early results should be good if a team is to stand any chance of being among the contestants for promotion honours at the end.

Whether the Town can achieve such a height remains to be seen. The Chairman has gone on record as saying that he will be happy if promotion can be secured in two years' time.

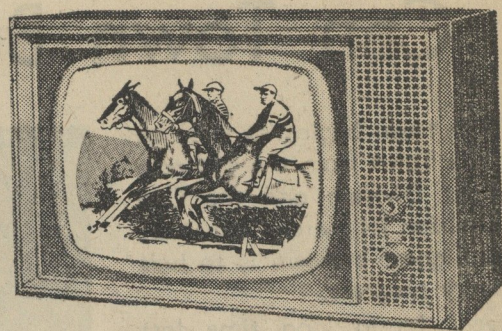
Promotion must be the aim because a club with the tradition of the Town should not have to be content with the comparative bread and butter football of the Third Division.

CHILTERN

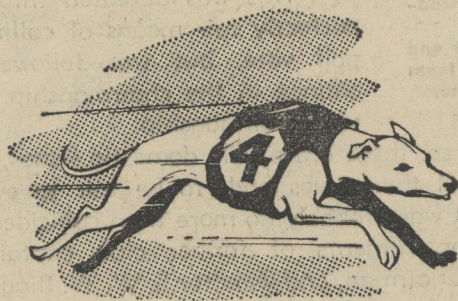
LUTON'S TURF ACCOUNTANTS WITH THE **PERSONAL SERVICE**



TELEPHONE
LUTON
23401
(all lines)



W. H.
LANCASTER
& SONS



Horse Racing
Greyhound Racing

We pay on the
4th HORSE OF ALL HANDICAPS WITH 16 RUNNERS
OR MORE ON SINGLE BETS

★ *Confidential credit accounts opened.*

Please write or phone for details ★

56 CAMBRIDGE STREET, LUTON

Members of the National Sporting League and Bookmakers' Protection Association.

LUTON TOWN FOOTBALL CLUB FIXTURES, 1964-65

1st XI, Division III

2nd XI, Football Combination

Date	Opponents	Ground	Goals For	Goals Against
1964				
Aug. 22	Brentford1.. (A) (6-2)		2	2
" 26	Colchester Utd. 3. (H) (3-1)		3	1
" 29	Bristol Rovers ... (H) (4-2)		0	2
" 31	Colchester Utd. 5. (A) (1-1)		1	0
Sept. 5	Oldham Ath. ...7.. (A) (1-0)		2	0
" 9	Port Vale8. (H) (1-0)		1	1
" 12	Exeter City (H) (—)		1	2
" 14	Port Vale (A) (0-1)		0	1
" 19	Bournemouth ...9. (A) (1-3)		0	4
" 26	Peterborough Utd. (H) (2-3)		1	1
Oct. 1	Carlisle Utd. 10. (H) (—)		1	1
" 3	Grimsby Town 11. (A) (—)		2	2
" 7	Carlisle Utd. 12. (A) (—)		1	1
" 9	Workington (A) (—)		0	1
" 12	Mansfield Town ... (A) (1-1)		0	2
" 17	Hull City (H) (2-1)		1	3
Int. " 21	Mansfield Town 13. (H) (0-2)		1	1
" 24	Gillingham (A) (—)		0	5
" 28	Scunthorpe Utd. 14. (H) (—)		1	1
" 31	Bristol City15. (H) (1-4)		0	0
Nov. 6	Q.P.R. (A) (1-1)		1	7
" 14	F.A. Cup, 1st Round Southend		1	0
" 21	Reading17. (A) (1-1)		2	1
" 28	Southend Utd. ... (H) (4-1)		0	1
Dec. 5	F.A. Cup, 2nd Round Gillingham		1	0
" 12	Brentford19. (H) (0-2)		4	2
" 19	Bristol Rovers ... (A) (2-1)		2	3
" 26	Watford (H) (2-1)		2	4
" 28	Watford (A) (0-2)		0	2
1965				
Jan. 2	Oldham Ath. 21. (H) (1-2)		2	0
" 9	(3) Shrewsbury Tn. (H) (2-0)		2	7
" 16	Exeter City (A) (—)		1	5
" 23	Bournemouth (H) (1-0)		0	1
" 30	(4) Barnsley (A) (1-3)		0	3
Feb. 6	Peterborough Utd. (A) (0-0)		0	2
" 13	Grimsby Town 22. (H) (—)		1	1
" 20	(5) Workington ... (H) (—)		1	1
" 27	Hull City (A) (0-2)		1	3
Mar. 6	(6) Barnsley 30. (H) (2-3)		5	1
" 13	Bristol City (A) (1-5)		0	1
" 20	Q.P.R.24. (H) (4-4)		2	0
" 26	Shrewsbury Tn. 26. (A) (0-1)		2	0
" 27	F.A. Cup Semi-finals			
April 3	Reading29. (H) (2-1)		3	1
Int. " 10	Southend Utd. ... (A) (1-0)		0	5
" 16	Walsall (H) (1-0)		1	3
" 17	Gillingham (H) (—)		0	2
" 19	Walsall32. (A) (0-4)		1	0
" 24	Scunthorpe Utd. ... (A) (—)			
May 1	F.A. Cup Final			
Sept 26th	Port Vale Lge Cup Rd1 (A)		1	0
23rd	Aston Villa " " Rd2 (H)		0	1
Nov 4th	West Ham Friendly (H)		3	4
Jan 9th	Sunderland FA Cup Rd3 (H)		0	3

Date	Opponents	Ground	Goals For	Goals Against
1964				
Aug. 22	Bristol Rovers2. (H)		3	0
" 29	Leyton Orient (A)		2	4
Sept. 5	Aldershot4. (H)		5	1
" 12	Charlton Athletic (A)		3	4
" 19	Bournemouth5. (H)		0	4
Oct. 1	Notts County6. (A)		3	3
" 3	Swindon Town (H)		1	4
" 10	Coventry City8. (H)		2	1
" 17	Southampton10. (A)		1	0
" 24	Southend United12. (H)		3	1
" 31	Birmingham13. (A)		2	2
Nov. 7	Reading15. (H)		2	0
" 10	Millwall (A)		2	0
" 21	Queen's Park Rangers17. (H)		1	2
" 28	Brighton19. (A)		4	2
Dec. 9	Southampton21. (H)		3	2
" 12	Bristol Rovers22. (A)		1	1
" 19	Leyton Orient24. (H)		4	3
" 28	Watford (H)		3	4
1965				
Jan. 2	Aldershot25. (A)		3	3
" 16	Charlton Athletic26. (H)		1	1
" 30	Oxford27. (H)		0	3
Feb. 6	Notts County29. (H)		4	0
" 13	Swindon Town (A)		2	4
" 20	Southend31. (A)		4	3
" 27	Birmingham32. (H)		3	3
Mar. 3	Reading (A)		0	6
" 6	Oxford34. (A)		3	1
" 13	Millwall36. (H)		4	1
" 20	Queen's Park Rangers38. (A)		3	0
" 27	Brighton40. (H)		2	2
" 31	Bournemouth (A)		0	0
Apr. 3	Coventry (A)		0	2
" 10	Brentford (H)		0	2
" 19	Brentford (A)		0	2
" 27	Watford (A)		1	2
" 12	Bedford (H)		1	2

Choosing a new Ford
is a Family Affair...



The famous Ford range of family cars offers such a wealth of variation that, by coming to L.M.C., you can choose the nearest thing to a personalised model possible. Bring the family too; they will enjoy helping you choose your ideal car. But whichever Ford model you choose you will find it not only an ideal car for the Bedfordshire countryside, but the best motoring value in its class. Keep in touch with the activities of L.M.C., the liveliest motor dealers in the county by reading L.M. News, an equally lively quarterly newspaper sent to you free on request.

L M C



326 Dunstable Road

THE LUTON MOTOR COMPANY

Distributors

LUTON. Tel. 31133

(Played Preserves)

These fixtures are the copyright of the Football League, Ltd., and are printed by their permission under Licence No. 2. They must not be reproduced in whole or in part without permission from the Football League, Ltd.

RON BAYNHAM
(goalkeeper)



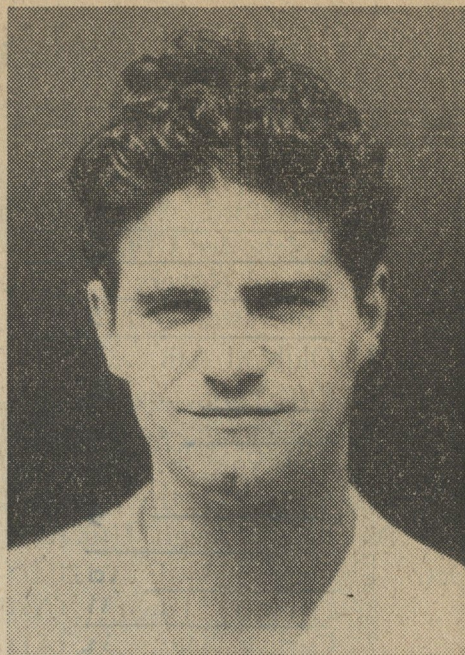
His thirteenth season with the Town turned out to be anything but unlucky for him because Baynham missed only three first team matches and showed much of the form that won him top honours in the game. Gained England caps against Ireland, Denmark and Spain and was thought to be unlucky to be discarded, though he was recalled some time later for the South American tour. Born in Birmingham, he was missed by the big Midland clubs and went to Worcester City for his first chance.

COLIN TINSLEY
(goalkeeper)



Had to wait until just before Christmas to make his League debut for the Town and then turned in three most adequate performances. However, when Baynham had recovered from injury, Tinsley had to return to the reserve team. Is an experienced player, and saw service with Darlington and Grimsby Town before going to Exeter City for whom he made 44 League appearances in the season before last. It was on the recommendation of Cyril Spiers, former manager of Exeter, that the Town signed him.

ALLAN McBAIN
(right-back)



Although in the early part of last season, McBain was regarded primarily as a reserve for either full-back position, he did so well that he earned a regular place at right-back and made 22 League appearances. As things turned out, the Town did a good deal with Carlisle United when they took this stockily-built Scot in exchange for Alan Ross, the young goalkeeper, and Jack Lornie, who has now moved on to Tranmere Rovers.

A great choice of good clothes

Nicholson

raincoats and overcoats for men are among the best in the world—but not the most expensive. We've stocked and sold Nicholson's for a long time; this year's collection is better and bigger than ever.

Charles
Mares
LIMITED

TAILORS, HATTERS, HOSIERS
TO MEN AND BOYS

65 George Street and 6 King Street, Luton. Tel. 26251



JOHN BRAMWELL
(left-back)



Holds a remarkable record for consistency since he joined the Town, along with Alec Ashworth and a £15,000 fee when Billy Bingham went to Everton. Of the 160 League matches the Town have played since he arrived here, Bramwell has missed only four and he was an ever-present last season. First came to the fore with Wigan Athletic from whom he went to Everton where he held a first team place for quite a spell. Rugged type of player who seldom has a bad game.

FREDDIE JARDINE
(left-back)



Just 12 months ago, Jardine appeared in this supplement as an outside-left, and, indeed, made 16 appearances in the League team in that position last season. Conversion into a defender came in mid-season after the manager had noted Jardine playing there in private trials and he was a success. At one time, it looked as if this player would be lost to the Town because he expressed a desire to return to his native Scotland and, initially, signed only a monthly contract before making up his mind to stay.

DAVE PACEY
(right-half)

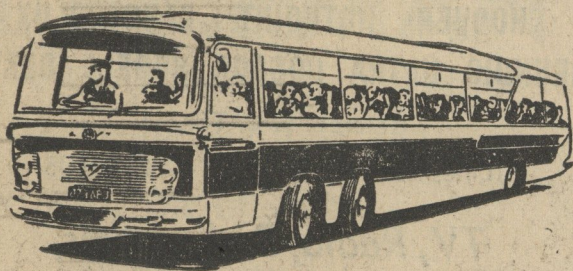


Was the team captain during the Town's great revival in the latter weeks of the season and the extra responsibility seemed to help his own form. Is a local who played for Luton Schoolboys and went to Hitchin Town before the Town offered him professional terms. At various times, there have been attempts to convert him into an inside-forward but, despite his flair for attack, they have never quite succeeded. Has also been used as a centre-half and played there for England "B".

FOLLOW THE TEAM

TO ALL AWAY MATCHES
in

Costin's Coaches



PRIVATE PARTIES A SPECIALITY.
26- TO 52-SEATER LUXURY COACHES

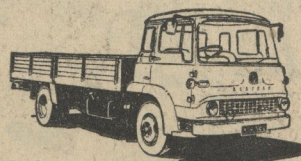
Write, phone or call

G. E. Costin Ltd.

67 WEST STREET, DUNSTABLE

Telephone Dunstable 64331

PLOWMANS for VAUXHALL and BEDFORD



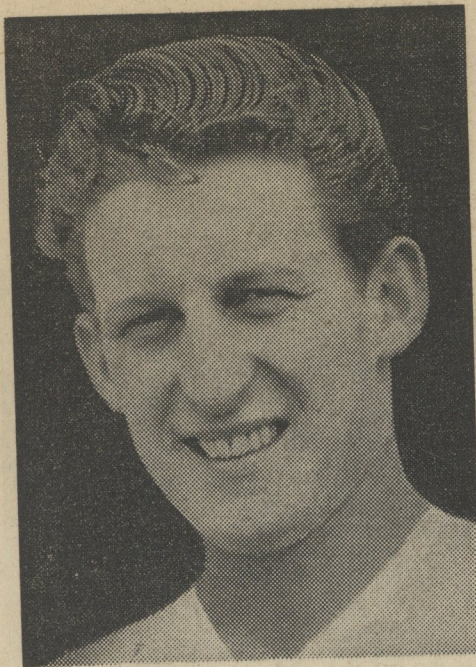
Plowmans Ltd.

SALES AND SERVICE

HITCHIN ROAD, LUTON

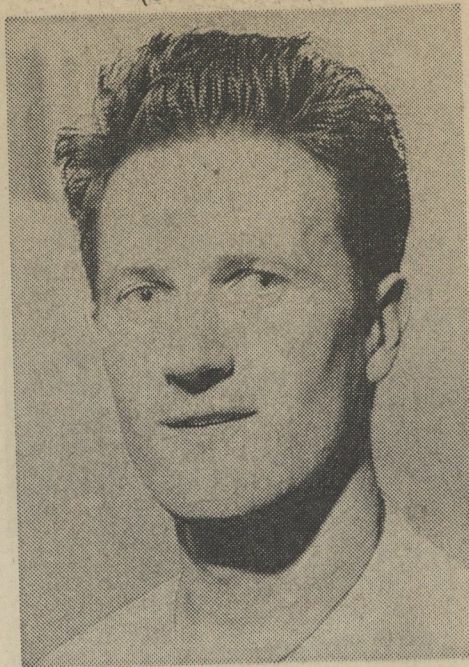
Telephone 22268

BOB RILEY
(right-half)



One of the new signings, he joined Leicester City as a junior but, recently, found the competition at wing-half too great for him to have real hope of first team recognition. When the City released him at the end of last season, the Town who had noted his play in the Leicester reserve team, stepped in with an offer of terms. Strong and assertive, he should prove to be a very useful asset to the Town. His brother, Howard, is Leicester's first choice outside-right.

GORDON FINCHAM
(centre-half)



Another former Leicester City player who left them to join Plymouth Argyle for a five-figures fee. With the Devon club he spent five years, much of the time in the first team. Took some time in which to settle down with the Town and early in the year was omitted in favour of Graham Caleb. However, he was brought back for the final vital period because of his great experience and played a full part in the Town getting away from the danger zone.

GRAHAM CALEB
(centre-half)



This youngster will remember his League debut for the Town because it came on the occasion of their first away win for many months and their highest for many years when they won 6-2 at Brentford. Kept his place for eight matches and did very well but, at Easter, the manager felt that the more experienced Fincham should come back. Caleb was signed from the amateur club, Oxford City, and was a prominent member of the Town's youth team.

SHANKS & TURNER LTD.

(Near Odeon Cinema)

123 Dunstable Rd., Luton Tel. 27634

Suppliers to
Luton Town
Football Club



—★—
20 West St.
Dunstable
Tel. 61533



FOR THE BEST IN FOOTBALL GEAR

FOOTBALL BOOTS by all leading manufacturers: ADIDAS, BOBBY CHARLTON, HONVED, PUMA, SLAZENGER.

*The finest selection of boots in the county.

FOOTBALLS by MINERVA, MITRE, SLAZENGER.

Also: Shirts, Shorts, Socks; Referees' and Linesmen's Clothing.

SATISFACTION WITH ALL EQUIPMENT

CLUBS—please note . . . For advice on all sports equipment, send us a postcard. Wally or Gordon will be pleased to call with a range of samples.



THIS IS THE TEAM FOR YOU

PYE

H.M.V.

PHILIPS

HOOVER HOTPOINT ELECTROLUX

GRUNDIG ULTRA COSSOR SOBELL SERVIS

Referee: E. C. TERMS

Linesman: O. R. RENT — FROMUS

TV, Radio, Radiograms,
Record Players, Washing Machines,
Cameras, etc.

RTE
Rentals
LTD

8 CRESTA HOUSE, ALMA STREET, LUTON

MARK LOWNDS

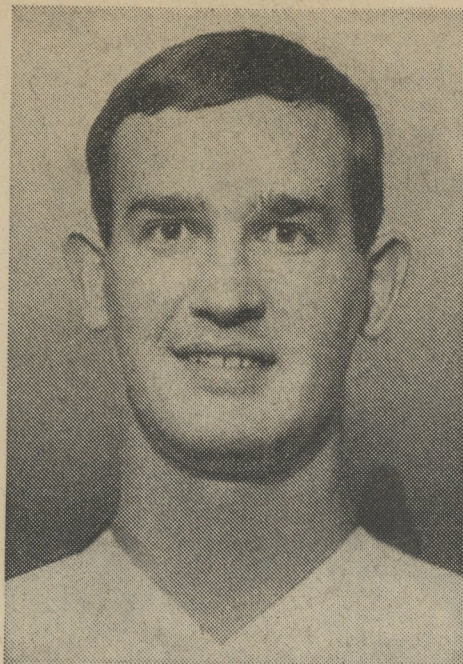
(left-half)



Not the most polished wing-half in the game by any manner of means, but is as rugged and hard working as they come and has the capacity of never knowing when he is beaten. Last season was his best for the Town because he made 22 League appearances to add to the 10 he had made previously. For the first time, he will be starting a campaign as the regular choice. Born in Co. Durham, he was playing for Ryhope Colliery Welfare when the Town were persuaded to give him a trial.

TONY KNIGHTS

(left-half)



Second newcomer to the wing-half position, Knights was signed a fortnight ago from Grimsby Town with whom he had spent nine seasons since the age of 15. In the last two seasons, he made 34 Second Division appearances for the Mariners who transfer-listed him in April. However, the League removed the fee from his head and he joined the Town in preference to taking up offers from Doncaster Rovers and Millwall. Can also play at inside-forward.

BILLY HAILS

(outside-right)



The Town's major new signing of the close season and one which they hope will increase the striking power of the front line. Hails, who made 33 Second Division appearances for Northampton last season, came to Luton in exchange for Harry Walden and, in addition, the Town collected a four-figure cheque. In the previous season, the Cobblers bought Hails from Peterborough United in order to boost their promotion hopes and he made his full contribution in the course of 26 first-team games.

If you are a

FOOTBALL FAN

you can place your bets with

I. RICHMAN

—the coupon that always
offers the best odds
on all lists.



FOR YOUR SEASON'S COUPONS
WRITE TO

I. RICHMAN

FIXED ODDS

LEAGRAVE ROAD

LUTON

RESULTS GUARANTEED

YOUR HOME WINS

if you order fuels

from

**CHARLES
FRANKLIN**

LTD.

221 MARSH ROAD, LEAGRAVE

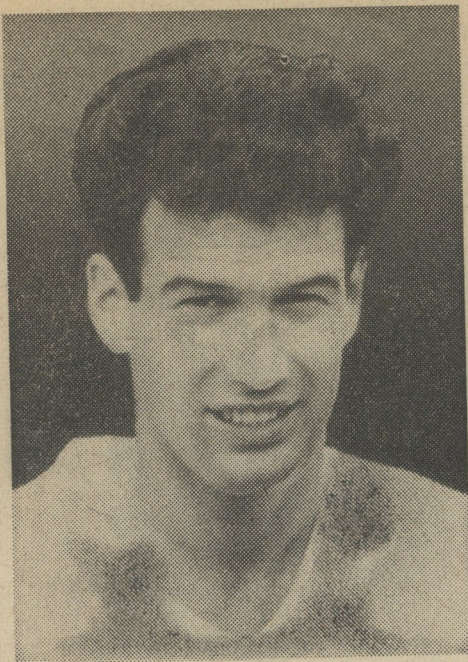
4 MILL STREET, LUTON

44 THE SQUARE and 178 HIGH STREET NORTH,
DUNSTABLE

Telephone Luton 54261

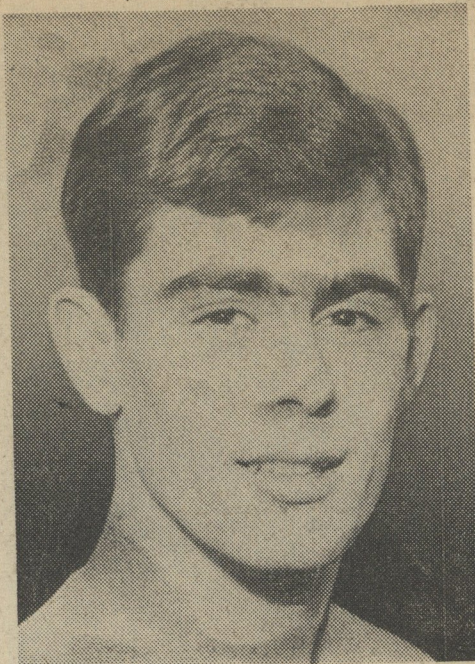
**SMOKELESS FUELS
OUR SPECIALITY**

TOMMY McKECHNIE
(inside-right)



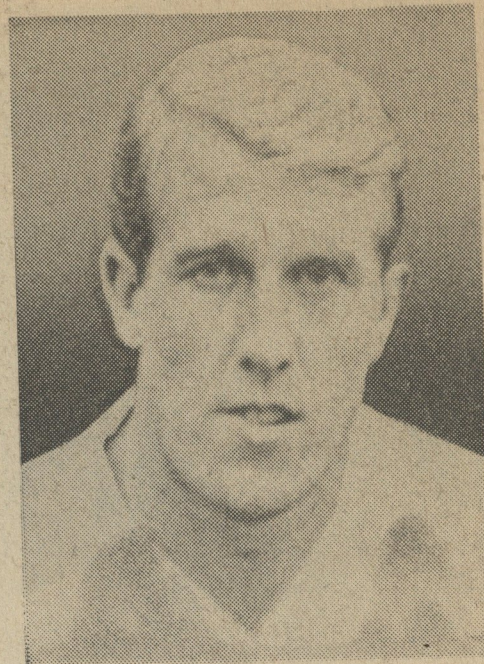
Has not yet blossomed forth as the marksman that he can be because many times last season he took up good position in front of goal, only not to exact full toll. His purple patch came in the match at Coventry when he scored twice in the first eight minutes and with a little more accuracy in front of goal, his name will appear in the list of scorers much more frequently. A Scot, he had a short spell with Glasgow Rangers before being reinstated as a junior, after which he played for Rob Roy.

JOHN O'ROURKE
(centre-forward)



Caused a sensation last season by the way in which he burst on the League scene after having been allowed to leave Chelsea on a free transfer. Made his first-team debut just before Christmas and, in 23 matches, went on to score 22 goals, including four at Brentford. Still only 19, he went to Arsenal after leaving school and moved on to Stamford Bridge after Tommy Docherty took over as manager. However, his chances were limited there and the Town stepped in when he was offered to them. Born at Dagenham.

JOHN REID
(inside-left)



The Town's most expensive player because he cost them £13,000 when they bought him from Northampton last November. Tall, hard-working player whose style is that of the deep-lying inside man and who is likely to take over this role again in the coming season. Yet, he has a terrific shot which was demonstrated all too rarely last season when he scored only one goal, a memorable one at Bournemouth. A Scot, he came south to join Bradford City and he made 41 appearances in the Cobblers' promotion team.

MAKE YOUR FINAL CHOICE
AT A. C. RIVERS

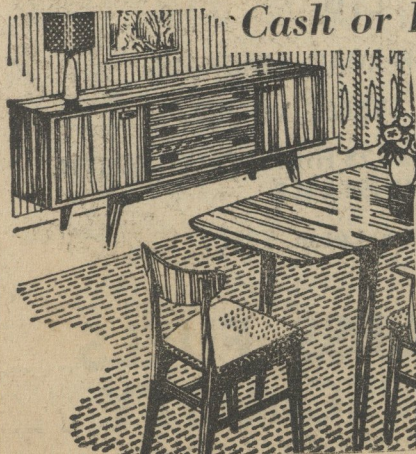
QUALITY FURNITURE
AT REASONABLE PRICES

LARGE SELECTION OF
**CARPETS, LINOLEUM,
AXMINSTER CARPETS
and RUGS**

**THREE-PIECE SUITES,
DINING SETS,
BEDROOM SUITES**
etc.

A. C. RIVERS

THE FIRM FOR HONEST-TO-GOODNESS VALUE
203 DUNSTABLE ROAD, LUTON
TELEPHONE 20281 NEAR BURY PARK



Cash or Easy Terms

*Provident Checks
Accepted*

Our representative
will be pleased to
call and explain our
EASY TERMS
at your convenience

TANG TOILETRIES FOR MEN

Roll-on Freshness—Roll on

TANG

TANG After-Shave and
Pre-Electric Shave are in
revolutionary, new roll-
on plastic bottles! Easy
to use for per-
fect grooming.



Also Tang Men's Soap, Shampoo, Hair Cream, Talc, Deodorant
Stick and Cologne.

Big, man-sized, long-lasting packs 6/6 to 12/3.

Men's Division of Helena Rubinstein.

G. R. H. HAY Ltd.

Chemists

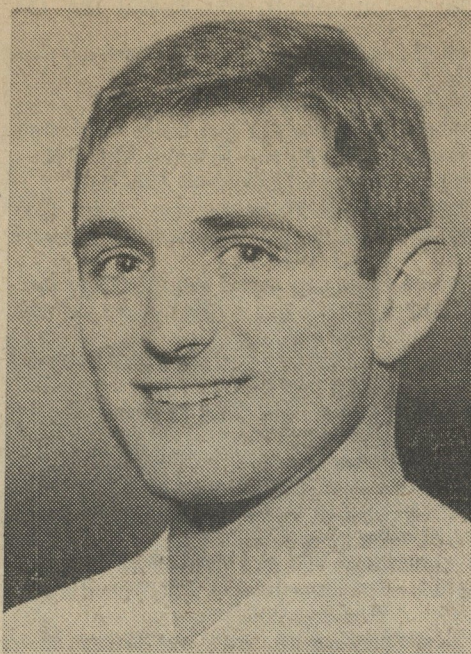
22 CHEAPSIDE, LUTON
Telephone 24197

GORDON RIDDICK
(inside-forward)



Finds himself in the position of being the leading reserve for at least two positions in the first-team forward line. A youngster from Abbots Langley, he has not yet reached his true potential, though in some away matches last season he gave more than a hint of what a good player he can be. Unfortunately, he has been the subject of barracking by a section of the home crowd which has not helped in his development which Manager Bill Harvey thinks will put him in the star class.

RAY WHITTAKER
(outside-left)



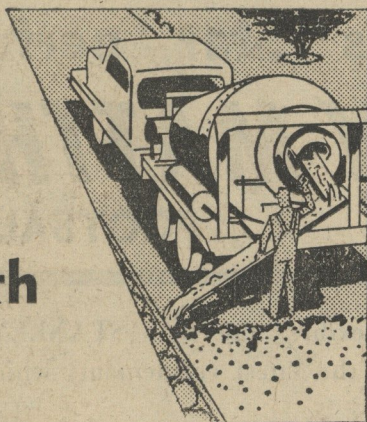
When the Town paid Arsenal between £2,000 and £3,000 for his transfer at the beginning of March, Whittaker rejoined a former team-mate in O'Rourke and these two are not only close friends off the field, but have developed a good understanding on it. A Londoner from Bow, he went on to the Arsenal ground staff from school but, like O'Rourke, found opportunities limited and he welcomed the move to Luton and the prospect of first-team service.

ROBIN CHANDLER
(utility forward)



Filled a variety of positions in the reserve team during last season when he played almost as often on the right wing as he did in what was his original position of centre-forward. A local, he was a schoolboy star who went on to earn Schoolboy International honours and the Town signed him as a part-time professional. Has had some first-team experience and played in all three Cup-ties against Ipswich Town in January, 1962.

You are
sure to
score with



**MIX
CONCRETE**

MIXCONCRETE LIMITED • HOUGHTON ROAD • DUNSTABLE

You'll score with all these advantages: Mix Concrete—the right mix where you want it, when you want it. Saves time, labour and money. Extra long chutes mean that concrete can be poured on to the very spot where needed. **Next time you need concrete phone MIX CONCRETE.**

PHONE
DUNSTABLE
63593

LCM

LUTON COMMERCIAL MOTORS LIMITED

**LUTON COMMERCIAL
MOTORS**

SPECIALISTS

IN THE SUPPLY AND SERVICING
OF

**NEW AND USED
COMMERCIAL VEHICLES**



MAIN DEALERS

THAMES HOUSE

PHONE **DUNSTABLE** 64381

F.A. CUP WINNERS SINCE 1901

1931-32	Newcastle United beat Arsenal (2-1).
1932-33	Everton beat Manchester City (3-0).
1933-34	Manchester City beat Portsmouth (2-1).
1934-35	Sheffield Wednesday beat West Bromwich Albion (4-2).
1935-36	Arsenal beat Sheffield United (1-0).
1936-37	Sunderland beat Preston North End (3-1).
1937-38	Preston North End beat Huddersfield Town (1-0) after extra time.
1938-39	Portsmouth beat Wolverhampton Wanderers (4-1).
1939-40	No competition.
1940-41	Derby County beat Charlton Athletic (4-1) after extra time.
1941-42	Charlton Athletic beat Burnley (1-0) after extra time.
1942-43	Manchester United beat Blackpool (4-2).
1943-44	Wolverhampton Wanderers beat Blackpool (2-0).
1944-45	Arsenal beat Liverpool (2-0).
1945-46	Newcastle United beat Blackpool (1-0).
1946-47	Newcastle United beat Bolton Wanderers (4-3).
1947-48	Blackpool beat Bolton Wanderers (1-0).
1948-49	Wolverhampton Wanderers beat Blackpool (2-0).
1949-50	Arsenal beat Liverpool (2-0).
1950-51	Newcastle United beat Blackpool (2-0).
1951-52	Newcastle United beat Blackpool (2-0).
1952-53	Blackpool beat Bolton Wanderers (4-3).
1953-54	West Bromwich Albion beat Preston North End (3-2).
1954-55	Newcastle United beat Manchester City (3-1).
1955-56	Manchester City beat Birmingham City (3-1).
1956-57	Aston Villa beat Manchester United (2-1).
1957-58	Bolton Wanderers beat Manchester United (2-1).
1958-59	Nottigham Forest beat Luton Town (2-1).
1959-60	Wolverhampton Wanderers beat Blackburn Rovers (3-1).
1960-61	Tottenham Hotspur beat Leicester City (2-0).
1961-62	Tottenham Hotspur beat Burnley (3-1).
1962-63	Manchester United beat Leicester City (3-1).
1963-64	West Ham beat Preston North End (3-2).

Luton Town Players' Appearances

DIVISION III:	Bramwell 46; Baynham 43; Pacey 42; Fincham 35; Walden 34; Morton 33; McKechie 32; Lownds 29; Turner 27; O'Rourke 23; Reid, McBain 22; Jardine 16; Fairchild 13; Whitaker, Weir, McGuffie, Salisbury 12; Riddick 11; Smith 10; Caleb 8; Daniel 6; Tinsley, Davies 3.
---------------	---

FOOTBALL COMBINATION:	Tinsley 32; Chandler 28; Salisbury 26; Scott 24; Jardine 22; Caleb, Clarke 21; Riddick, Weir 20; McGuffie 19; Fairchild 17; McBain 14; Lownds, Smith 12; Morton, Fincham, Rivers 9; Turner 6; Brennan, Long, Daniel, McKechie, Walden 3; Hargreaves, O'Rourke, Riech, 2; Baynham 1; Amateus 30.
-----------------------	---

Goal-Scorers

DIVISION III:	O'Rourke 22; Turner 16; McKechie 8; Walden 4; Salisbury, Lownds, Jardine, Daniel 2; Riddick, Weir, Smith, Reid, Pacey 1; opponent 1.
---------------	--

F.A. CUP:	Turner, McKechie 2; Smith, Fairchild 1.
-----------	---

OTHER PLAYERS ON THE BOOKS

Full-backs:	R. Edwards, A. Rivers; half-back: A. Clarke; forward: M. Forsyth.
-------------	---

Apprentice professionals:	B. Riech, C. Long, A. Slough, J. Hyde, T. Copeland.
---------------------------	---

1930-31	West Bromwich Albion beat Birmingham City (2-1).
---------	--

1929-30	Arsenal beat Huddersfield Town (2-0).
---------	---------------------------------------

1928-29	Bolton Wanderers beat Portsmouth (2-0).
---------	---

1927-28	Blackburn Rovers beat Huddersfield Town (3-1).
---------	--

1926-27	Cardiff City beat Arsenal (1-0).
---------	----------------------------------

1925-26	Bolton Wanderers beat Manchester City (1-0).
---------	--

1924-25	Sheffield United beat Cardiff City (1-0).
---------	---

1923-24	Newcastle United beat Aston Villa (2-0).
---------	--

1922-23	Bolton Wanderers beat West Ham (2-0).
---------	---------------------------------------

1921-22	Huddersfield Town beat Preston North End (1-0).
---------	---

1920-21	Tottenham Hotspur beat Wolverhampton Wanderers (1-0).
---------	---

1919-20	Aston Villa beat Huddersfield Town (1-0).
---------	---

1918-19	No competition.
---------	-----------------

1917-18	Sheffield United beat Chelsea (3-0).
---------	--------------------------------------

1916-17	Burnley beat Liverpool (1-0).
---------	-------------------------------

1915-16	Aston Villa beat Sunderland (1-0).
---------	------------------------------------

1914-15	Barnsley beat West Bromwich A. (1-0) after a draw 0-0.
---------	--

1913-14	Bradford City beat Newcastle United (1-0) after a draw 0-0.
---------	---

1912-13	Newcastle United beat Barnsley (2-0) after a draw 1-1.
---------	--

1911-12	Manchester United beat Bristol City (1-0).
---------	--

1910-11	Wolverhampton Wanderers beat Newcastle United (3-1).
---------	--

1909-10	Sheffield Wednesday beat Everton (2-1).
---------	---

1908-09	Aston Villa beat Newcastle United (2-0).
---------	--

1907-08	Manchester City beat Bolton Wanderers (1-0).
---------	--

1906-07	Derby County beat Bolton Wanderers (6-0).
---------	---

1905-06	Sheffield Wednesday beat Bolton Wanderers (6-0).
---------	--

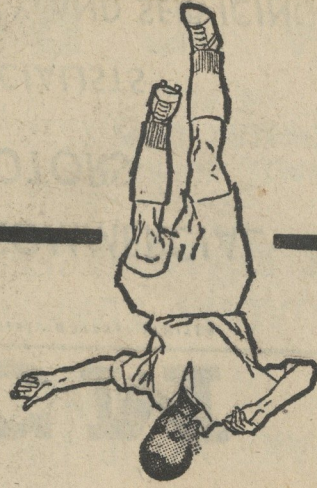
1904-05	Sheffield Wednesday beat Bolton Wanderers (6-0).
---------	--

1903-04	Sheffield Wednesday beat Bolton Wanderers (6-0).
---------	--

1902-03	Sheffield Wednesday beat Bolton Wanderers (6-0).
---------	--

1901-02	Sheffield Wednesday beat Bolton Wanderers (6-0).
---------	--

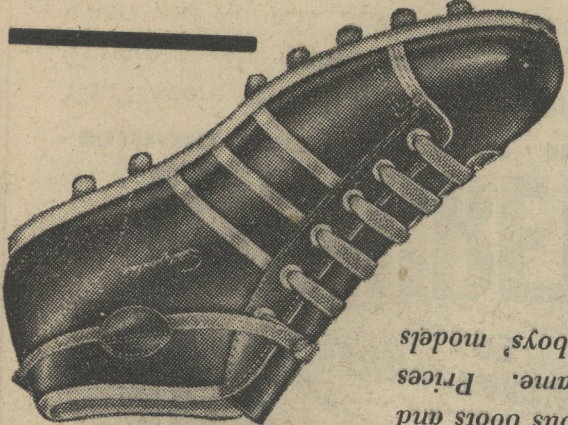
1900-01	Tottenham H. beat Sheffield Utd. (3-1) after a draw 2-2.
---------	--



Light, streamlined and flexible, the new STANLEY MATTHEWS Football Boots feature all the latest refinements which Stan himself has recommended.

Play in a pair of these world-famous boots and add speed and sparkle to your game. Prices range from as low as 29/11 for boys' models and from 37/11 for men's.

See the whole of the brilliant new range of STANLEY MATTHEWS Football Boots—it includes the most up-to-date Continental styling.



The season's Star performers! STANLEY MATTHEWS FOOTBALL BOOTS

LUTON INDUSTRIAL CO-OPERATIVE SOCIETY LIMITED

SIGNINGS
D Platt 19, OR from Notts £8,000
K Barton
J Gibson
T Phillips
LB " Tottenham
RH " Cambridge Utd £4,000
IL " Leyton O £5,000

LUTON TOWN RESULTS IN F.A. CUP

1930-31		F A
Nov. 29—1st Round:	Clapton Orient	H 2-2
Dec. 4—1st Round:	Clapton Orient*	A 4-1
Dec. 13—2nd Round:	Watford	A 1-3

1931-32		F A
Nov. 28—1st Round:	Swindon	A 5-0
Dec. 12—2nd Round:	Lincoln	A 2-2
Dec. 16—2nd Round:	Lincoln*	H 4-1
Jan. 9—3rd Round:	Wolves	H 1-2

1932-33		F A
Nov. 26—1st Round:	Kingstonians	H 2-2
Nov. 30—1st Round:	Kingstonians*	A 3-2
Dec. 10—2nd Round:	Stockport County	A 3-2
Jan. 14—3rd Round:	Barnsley	A 0-0
Jan. 18—3rd Round:	Barnsley*	H 2-0
Jan. 28—4th Round:	Tottenham Hotspur	H 2-0
Feb. 18—5th Round:	Halifax Town	A 2-0
Mar. 4—6th Round:	Everton	A 0-6

1933-34		F A
Jan. 12—3rd Round:	Arsenal	H 0-1

1934-35		F A
Jan. 12—3rd Round:	Chelsea	A 1-1
Jan. 16—3rd Round:	Chelsea*	H 2-0
Jan. 26—4th Round:	Burnley	A 1-3

1935-36		F A
Jan. 11—3rd Round:	West Ham	A 2-2
Jan. 15—3rd Round:	West Ham*	H 4-0
Jan. 25—4th Round:	Manchester City	A 1-2

1936-37		F A
Jan. 16—3rd Round:	Blackpool	H 3-3
Jan. 20—3rd Round:	Blackpool*	A 2-1
Jan. 30—4th Round:	Sunderland	H 2-2
Feb. 3—4th Round:	Sunderland*	A 1-3

1937-38		F A
Jan. 8—3rd Round:	Scarborough	A 1-1
Jan. 17—3rd Round:	Scarborough*	H 5-1
Jan. 22—4th Round:	Swindon Town	H 2-1
Feb. 12—5th Round:	Manchester City	H 1-3

1938-39		F A
Jan. 7—3rd Round:	Liverpool	A 0-3

1945-46		F A
Jan. 5—3rd Round:	Derby County	H 0-6
Jan. 9—3rd Round:	Derby County	A 0-3

1946-47		F A
Jan. 11—3rd Round:	Notts County	H 6-0
Jan. 25—4th Round:	Swansea Town	H 2-0
Feb. 8—5th Round:	Burnley	H 0-0
Feb. 11—5th Round:	Burnley*	A 0-3

1947-48		F A
Jan. 11—3rd Round:	Plymouth	A 4-2
Jan. 24—4th Round:	Coventry	H 3-2
Feb. 7—5th Round:	Queen's Park R.	A 1-3

1948-49		F A
Jan. 8—3rd Round:	West Ham	H 3-1
Jan. 29—4th Round:	Walsall	H 4-0
Feb. 12—5th Round:	Leicester City	H 5-5
Feb. 19—5th Round:	Leicester City*	A 3-5

1949-50		F A
Jan. 7—3rd Round:	Grimsby Town	H 3-4

1950-51		F A
Jan. 6—3rd Round:	Portsmouth	H 2-0
Jan. 27—4th Round:	Bristol Rovers	H 1-2

1951-52		F A
Jan. 12—3rd Round:	Charlton Athletic	H 1-0
Feb. 2—4th Round:	Brentford	H 2-2
Feb. 6—4th Round:	Brentford*	A 0-0
Feb. 18—4th Round:	Brentford*	N 3-2
Feb. 23—5th Round:	Swindon Town	H 3-1
Mar. 8—6th Round:	Arsenal	H 2-3

1952-53		F A
Jan. 10—3rd Round:	Blackburn Rovers	H 6-1
Jan. 31—4th Round:	Manchester City	A 1-1
Feb. 4—4th Round:	Manchester City*	H 5-1
Feb. 14—5th Round:	Bolton Wanderers	H 0-1

1953-54		F A
Jan. 9—3rd Round:	Blackpool	A 1-1
Jan. 13—3rd Round:	Blackpool*	H 0-0
Jan. 18—3rd Round:	Blackpool*	V 1-1
Jan. 25—3rd Round:	Blackpool*	W 0-2

1954-55		F A
Jan. 8—3rd Round:	Workington	H 5-0
Jan. 29—4th Round:	Rotherham United	A 5-1
Feb. 19—5th Round:	Manchester City	H 0-2

1955-56		F A
Jan. 11—3rd Round:	Leicester City	H 0-4

1956-57		F A
Jan. 5—3rd Round:	Aston Villa	H 2-2
Jan. 7—3rd Round:	Aston Villa*	A 0-2

1957-58		F A
Jan. 4—3rd Round:	Stockport County	A 0-3

1958-59		F A
Jan. 10—3rd Round:	Leeds United	H 5-1
Jan. 24—4th Round:	Leicester City	A 1-1
Jan. 28—4th Round:	Leicester City*	H 4-1
Feb. 14—5th Round:	Ipswich Town	A 5-2
Feb. 28—6th Round:	Blackpool	A 1-1
Mar. 4—6th Round:	Blackpool*	H 1-0
Mar. 14 — Semi-Final:	Norwich City	T 1-1
Mar. 18 — Semi-Final:	Norwich City*	B 1-0
May 2 — Final:	Nottingham Forest	A 1-2

1959-60		F A
Jan. 9—3rd Round:	Exeter City	A 2-1
Jan. 30—4th Round:	Huddersfield Town	A 1-0
Feb. 20—5th Round:	Wolves	H 1-4

1960-61		F A
Jan. 7—3rd Round:	Northampton Tn	H 4-0
Jan. 28—4th Round:	Manchester City	H 2-6
(Abandoned)		
Feb. 1—4th Round:	Manchester City	H 3-1
Feb. 18—5th Round:	Barnsley	A 0-1

1961-62		F A
Jan. 6—3rd Round:	Ipswich Town	A 1-1
Jan. 10—3rd Round:	Ipswich Town*	H 1-1
Jan. 15—3rd Round:	Ipswich Town*	N 1-5

1962-63		F A
Jan. 26—3rd Round:	Swindon Town	H 0-2

1963-64		F A
Nov. 16—1st Round:	Bridgwater	A 3-0
Dec. 7—2nd Round:	Reading	H 2-1
Jan. 4—3rd Round:	Fulham	A 1-4

(V) At Villa Park (W) At Wolverhampton
(N) At Highbury (T) At Tottenham
* Replay (B) At Birmingham

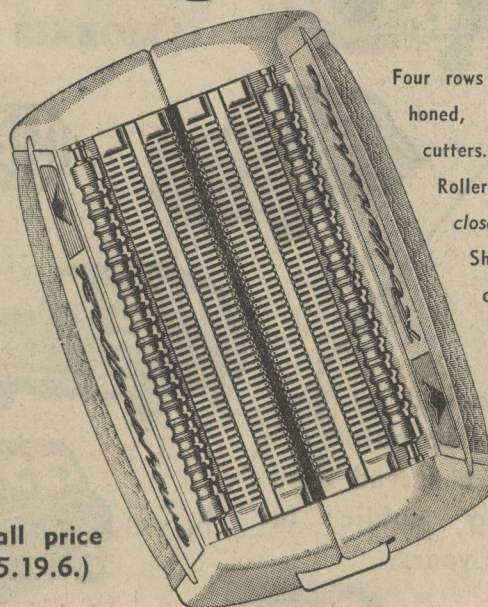
"Have another bite"



Bite is what all real bitter-drinkers expect bitter to have — but don't always get. That satisfying bite is the true bitter taste you always get when you drink Flowers Keg.

**pick Flowers Keg
the bitter with the bite**

big head



Four rows of diamond-honed, surgical-steel cutters. Exclusive Roller-Combs for closer shaving. Sheer shaving quality, sheer Remington precision — at under six pounds!

Small price (£5.19.6.)

See the Remington Rollershaver at:

Ricky's
Shaver Centre

54 Cardigan Street, Luton
Telephone 25736

FINAL LEAGUE TABLES, 1963-64

DIVISION I

	P	W	D	L	F	A	P
Liverpool	42	26	5	11	92	45	57
Manchester United	42	23	7	12	90	62	53
Everton	42	21	10	11	84	64	52
Tottenham	42	22	7	13	97	81	51
Chelsea	42	20	10	12	72	56	50
Sheffield Wednesday	42	19	11	12	84	67	49
Blackburn	42	18	10	14	89	65	46
Arsenal	42	17	11	14	90	82	45
Burnley	42	17	10	15	71	64	44
West Brom	42	16	11	15	70	61	43
Leicester	42	16	11	15	61	58	43
Sheffield United	42	16	11	15	61	64	43
Nottingham Forest	42	16	9	17	64	68	41
West Ham	42	14	12	16	69	74	40
Fulham	42	13	13	16	58	65	39
Wolves	42	12	15	15	70	80	39
Stoke	42	14	10	18	77	78	38
Blackpool	42	13	9	20	52	73	35
Aston Villa	42	11	12	19	62	71	34
Birmingham	42	11	7	24	54	92	29
Bolton	42	10	8	24	48	80	28
Ipswich	42	9	7	26	56	121	25

DIVISION II

	P	W	D	L	F	A	P
Leeds United	42	24	15	3	71	34	63
Sunderland	42	25	11	6	81	37	61
Preston North End	42	23	10	9	79	54	56
Charlton Athletic	42	19	10	13	76	70	48
Southampton	42	19	9	14	100	73	47
Manchester City	42	18	10	14	84	66	46
Rotherham	42	19	7	16	90	78	45
Newcastle United	42	20	5	17	74	69	45
Portsmouth	42	16	11	15	79	70	43
Middlesbrough	42	15	11	16	67	52	41
Northampton Town	42	16	9	17	58	60	41
Huddersfield Town	42	15	10	17	57	64	40
Derby County	42	14	11	17	56	67	39
Swindon Town	42	14	10	18	57	69	38
Cardiff City	42	14	10	18	56	81	38
Leyton Orient	42	13	10	19	54	72	36
Norwich City	42	11	13	18	64	80	35
Bury	42	13	9	20	57	73	35
Swansea Town	42	12	9	21	63	74	33
Plymouth Argyle	42	8	16	18	45	67	32
Grimsby Town	42	9	14	19	47	75	32
Scunthorpe United	42	10	10	22	52	82	30

DIVISION III

	P	W	D	L	F	A	P
Coventry City	46	22	16	8	98	61	60
Crystal Palace	46	23	14	9	73	51	60
Watford	46	23	12	11	79	59	58
Bournemouth	46	24	8	14	79	58	56
Bristol City	46	20	15	11	84	64	55
Reading	46	21	10	15	79	62	52
Mansfield Town	46	20	11	15	76	62	51
Hull City	46	16	17	13	73	68	49
Oldham Athletic	46	20	8	18	73	70	48
Peterborough United	46	18	11	17	75	70	47
Shrewsbury Town	46	18	11	17	73	80	47
Bristol Rovers	46	19	8	19	91	79	46
Port Vale	46	16	14	16	53	49	46
Southend United	46	15	15	16	77	78	45
Queens Park Rangers	46	18	9	19	76	78	45
Brentford	46	15	14	17	87	80	44
Colchester United	46	12	19	15	70	68	43
LUTON TOWN	46	16	10	20	64	80	42
Walsall	46	13	14	19	59	76	40
Barnsley	46	12	15	19	68	94	39
Millwall	46	14	10	22	53	67	38
Crewe Alexandra	46	11	12	23	50	77	34
Wrexham	46	13	6	27	75	107	32
Notts County	46	9	9	28	45	92	27

DIVISION IV

	P	W	D	L	F	A	P
Gillingham	46	23	14	9	59	30	60
Carlisle United	46	25	10	11	113	58	60
Workington Town	46	24	11	11	76	52	59
Exeter City	46	20	18	8	62	37	58
Bradford City	46	25	6	15	76	62	56
Torquay United	46	20	11	15	80	54	51
Tranmere Rovers	46	20	11	15	85	73	51
Brighton	46	19	12	15	71	52	50
Aldershot	46	19	10	17	83	78	48
Halifax Town	46	17	14	15	77	77	48
Lincoln City	46	19	9	18	67	75	47
Chester	46	19	8	19	65	60	46
Bradford	46	18	9	19	75	81	45
Doncaster Rovers	46	15	12	19	70	75	42
Newport County	46	17	8	21	64	73	42
Chesterfield	46	15	12	19	57	71	42
Stockport County	46	15	12	19	50	68	42
Oxford United	46	14	13	19	59	63	41
Darlington	46	14	12	20	66	93	40
Rochdale	46	12	15	19	56	59	39
Southport	46	15	9	22	63	88	39
York City	46	14	7	25	52	66	35
Hartlepool United	46	12	9	25	54	83	33
Barrow	46	6	18	22	51	83	30

FOOTBALL COMBINATION

DIVISION I

	P	W	D	L	F	A	P
Tottenham Hotspur	34	26	4	4	120	48	56
Plymouth Argyle	34	18	10	6	66	40	46
Leicester City	34	18	7	9	84	65	43
Nottingham Forest	34	18	6	10	90	47	42
West Ham United	34	18	6	10	95	65	42
Arsenal	34	19	3	12	87	48	41
Peterborough United	34	16	8	10	70	53	40
Northampton Town	34	16	6	12	83	60	38
Crystal Palace	34	11	12	11	59	54	34
Ipswich Town	34	13	7	14	71	84	33
Norwich City	34	14	4	16	58	59	32
Cardiff City	34	10	10	14	60	79	30
Mansfield Town	34	12	6	16	59	88	30
Shrewsbury Town	34	11	5	18	59	74	27
Colchester United	34	9	5	20	55	105	23
LUTON TOWN	34	6	7	21	46	87	19
Bristol Rovers	34	7	4	23	40	95	18
Notts County	34	7	4	23	35	86	18

Relegated to Division II: Luton Town, Bristol Rovers and Notts County.

DIVISION II

	P	W	D	L	F	A	P
Chelsea	34	21	6	7	74	27	48
Portsmouth	34	20	6	8	79	46	46
Fulham	34	17	9	8	68	52	43
Charlton Athletic	34	18	6	10	70	45	42
Reading	34	16	8	10	84	67	40
Swindon Town	34	16	7	11	80	65	39
Birmingham City	34	16	6	12	73	58	38
Coventry City	34	14	9	11	66	63	37
Millwall	34	14	9	11	50	54	37
Watford	34	14	8	12	68	60	36
Southampton	34	16	4	14	72	66	36
Bournemouth	34	13	7	14	50	52	33
Leyton Orient	34	11	6	17	58	75	28
Brentford	34	10	7	17	44	74	27
Brighton and Hove Albion	34	8	8	18	52	88	24
Queens Park Rangers	34	10	2	22	49	73	22
Southend United	34	7	6	21	65	96	20
Aldershot	34	4	8	22	44	85	16

Promoted to Division I: Chelsea, Portsmouth and Fulham. Re-elected: Southend United and Aldershot. Elected for this season: Oxford Utd.

THE TEAM YOU CAN RELY ON



MORRIS



WOLSELEY



MG



BMC



VANDEN PLAS







... backed by the distributors who have served the motoring public for over 50 years.

DICKINSON & ADAMS

(LUTON) LTD.

Leagrave Road, Luton. Tel. 51221

- ★ Factory-trained Service Engineers
- ★ Modern equipment
- ★ Courteous and helpful staff

For your next new car come to D. & A. and drive away really satisfied.

Always a wide range of reliable used cars available.

SECRETARIES OF FOOTBALL CLUBS IN SOUTH BEDS AND DISTRICT

SOUTH MIDLANDS LEAGUE

PREMIER DIVISION

AC-Delco—Miss B. J. Charlton, AC-Delco, Watling-street, Dunstable, Beds.
 Addmult—H. W. Hind, 22 Ritcroft-close, Hemel Hempstead, Herts.
 Ampthill Town—V. J. Brookes, 10 Alameda-walk, Ampthill, Beds.
 Arlesey Town—K. Akin, 143 High-street, Arlesey, Beds.
 Baldock Town—A. A. H. Ingrey, 42 Nightingale-way, Baldock, Herts.
 B.A.C. (Luton)—R. E. Harris, 70 Watermead-road, Luton.
 Electrolux—H. C. Oliver, 17 Mayne-avenue, Luton.
 Harpenden Town—F. W. Bareham, 21 Cowper-road, Harpenden, Herts.
 Hemel Hempstead United—R. G. Ross, 59 Raybarn-road, Hemel Hempstead, Herts.
 Leighton Town—A. F. Keveren, 70 Churchill-road, Leighton Buzzard, Beds.
 Luton Skefko Athletic—R. S. Keating, 165 High-street, Leagrave, Luton.
 Sandy Albion—J. A. Piggott, 11, Belam-way, Sandy, Beds.
 Shefford Town—J. Brooks, 56 Ivel-road, Shefford, Beds.
 Shillington—S. J. Tingey, 39 High-road, Shillington, nr. Hitchin, Herts.
 Stony Stratford Town—E. Hellenburgh, 18 Frankston-avenue, Stony Stratford, Bucks.
 Stotfold—W. Clegg, 14 Princes-street, Stotfold, nr. Hitchin, Herts.

DIVISION I

A.M.L. (Tickford)—T. J. Rutter, 81 Tickford-street, Newport Pagnell, Bucks.
 Barton Rovers—V. E. Evans, c/o The Royal Oak, Barton-le-Cley, Beds.
 Eaton Bray United—F. Ashton, 17 Totternhoe-road, Dunstable, Beds.
 Esavian Sports—M. Rouse, c/o Esavian Works, Fairview-road, Stevenage, Herts.
 Houghton Regis—J. Ashton, 28 Manor Park, Houghton Regis, Dunstable, Beds.
 K. & L. Sports—J. F. Wright, K. & L. Sports Club, Dunham's-lane, Letchworth, Herts.
 Kodak—E. Dewhurst, 40 Hawthorn-lane, Hemel Hempstead, Herts.

Langford—F. Woodward, 17 The Leys, Langford, Beds.
 Luton Kent's Athletic—H. Naylor, George Kent Ltd., Biscot-road, Luton.
 Marston Shelton Rovers—W. J. Campin, "Casalo," 29 Cause End-road, Wootton, Bedford.
 Old Lutonians—S. Butler, 3 West Hill-road, Luton.
 Rotax Sports—P. Smyth, 66 Long Chaulden, Hemel Hempstead, Herts.
 Royston Town—E. H. Cain, 9 Heath-avenue, Royston, Herts.
 Stewartby—G. Wilkinson, 184 Wavell-close, Stewartby, Beds.
 Totternhoe—J. D. Basterfield, 41 Park-avenue, Totternhoe, Dunstable, Beds.
 Waterlow's—E. J. Bell, Waterlow & Sons Ltd., Dunstable, Beds.

LUTON DISTRICT AND SOUTH BEDS LEAGUE

PREMIER DIVISION

Brache Sparta—M. R. Franklin, 62 Katherine-drive, Dunstable, Beds.
 Commer—T. Livesey, 20 Abbots Wood-road, Luton.
 Grange Albion—J. Pemberton, 29, Saltfield-crescent, Luton.
 Hungarian United—E. Uhercsik, Flat B, 4 Salisbury-road, Luton.
 Luton Blue Star—F. W. Dolby, 9 Highwood-close, Luton.
 Luton Boys' Club—D. J. Anderson, 36 Neville-road, Luton.
 Luton Red Lion—N. Evans, 34 The Grove Caravan Park, Woodside, nr. Luton.
 Luton Spartans—H. Smith, 3 Dallow-road, Luton.
 Pioneer Corinthians—P. Magner, 18 Linden-road, Dunstable, Beds.
 Stockwood Athletic—K. Kilby, 24 Hillary-crescent, Luton.
 Stopsley—G. Furlong, 74 Castle-street, Luton.
 Toddington Rovers—J. Baker, "Sweet Briars," Leighton-road, Toddington, nr. Dunstable, Beds.
 Vauxhall Motors—K. Edge, Vauxhall Motors, Luton.
 Walcot Athletic—D. K. Richards, 140 Farley-hill, Luton.
 Wilden Athletic—A. B. Gatward, 12 St. Catherine's-avenue, Luton.

DIVISION I

Bells Park—J. T. Phillips, 31 Cades-close, Luton.
 Boys' Brigade Old Boys—B. A. Cox, 109a, Stockingstone-road, Luton.
 British Aircraft Corporation (Luton)—R. E. Harris, 70, Watermead-road, Luton.
 Caddington—M. J. Hinton, 899, Dunstable-road, Luton.
 Central F.C.—R. S. Old, Central Youth H.Q., Waller-street, Luton.
 Grange Albion Reserves—J. Pemberton, 29 Saltfield-crescent, Luton.
 Heath United—G. Tremarco, Sheepcote-crescent, Heath and Reach.
 Luton Brewery—T. McGuiness, 19 Park Street-west, Luton.
 Luton Hotspur—F. P. Grummitt, 215a Park-street, Luton.
 Luton Spartans—H. Smith, 3 Dallow-road, Luton.
 Luton Red Lion "A"—N. Evans, 34 The Grove Caravan Site, Woodside, nr. Luton.
 Offley—R. Wright, Clouds-hill, Offley, nr. Hitchin, Herts.
 Slapton Rovers—P. E. Rowe, 20 Stanbridge-road, Leighton Buzzard.
 Stopsley Reserves—G. Furlong, 74, Castle-street, Luton.
 Wilden Athletic "A"—A. B. Gatward, 12, St. Catherine's-avenue, Luton.

DIVISION II

Bagshawe—J. McK Sutherland, 82 Browning-road, Luton.
 Bramingham Rovers—M. Burnett, 6 Gardenia-avenue, Luton.
 Harlington—P. Thurman, 4 Daubeney-close, Harlington, nr. Dunstable, Beds.
 H. C. Janes R.C.—D. Howes, 25 Peartree-road, Luton. Telephone Hexton 364 (works).
 High Town United—J. R. Thorn, 57 Wenlock-street, Luton.
 Linslade United—G. Dimmock, 163, Stanbridge-road, Leighton Buzzard.
 Luton Water Company—J. B. Whitmore, c/o Luton Water Company, Crescent-road, Luton.
 Neville Athletic—C. G. Harry, 6 Hollybush-road, Luton.
 Olivers United—B. R. Winch, 16, Newbury-close, Silsoe, Beds.
 St. Andrew's Robin Hoods—P. J. Mardle, 4 Front-street, Slip End, Nr. Luton.

Continued on Page 14

BEDFORDSHIRE'S SPORTS CENTRE

ALL THE BEST FOR THE
FOOTBALL SEASON



CONTINENTAL FOOTBALL BOOTS

from 36/6 to £5.10.0

ADIDAS PENTAGON PUMA

BOBBY CHARLTON JOHNNY HAYNES



GENEROUS CLUB TERMS

Ask our representative to call

Goalposts, Nets,
Corner Flags, Poles,
Ground Markers,
Marking Compounds

CLUB QUALITY FOOTBALLS

Laced valve and laceless from £3 to £7.15.0
 Artex, Minerva, Webber, 'T' Balls, Mitre, Zephyr,

Bukta, Litesome, Umbro Sportswear

G. A. WILD & SONS LTD.

14 MANCHESTER STREET, LUTON

7 High Street, Bedford

41 High Street North, Dunstable

Continued from Page 13

Secretaries Of Local Clubs

Stockwood Athletic Reserves—K. G. Kilby, 24 Hillary-crescent, Luton.
 Walcot Athletic Reserves—D. K. Richards, 140, Farley-hill, Luton.
 Westoning—R. Skelton, 55 Spensley-road, Westoning, Beds.
 The 61 Club—H. J. Sinfield, 20 Kingsley-road, Luton.
 Leaside & Limbury—A. Coates, 5 Withy-close, Luton.

DIVISION III

Caddington "B"—M. J. Hinton, 899 Dunstable-road, Luton.
 Challney Old Boys—A. W. Head, 54 Florence-avenue, Sundon Park, Luton.
 College of Technology—K. Humfrey, 34, Bishops-cote-road, Luton.
 Dunstable Albion—M. Mitchell, 86 High-street North, Dunstable, Beds.
 Heath United Reserves—G. Tremarco, Sheepcote-crescent, Heath and Reach.
 Hungarian United Reserves—E. Uhercsik, Flat B, 4 Salisbury-road, Luton.
 Luton Community Centre—L. Ager, 39 Lyndhurst-road, Luton.
 Luton Gas Works—M. Draper, 115, Runley-road, Luton.
 Luton Rangers—R. J. Mead, 19 Ambleside, Luton.
 Tithe Farm—W. Vine, 100 Tithe Farm-road, Houghton Regis, Dunstable, Beds.
 Toddington Rovers Reserves—J. Baker "Sweet Briars," Leighton-road, Toddington, nr. Dunstable, Beds.
 Wesley Wanderers—M. A. Parsons, 134 Union-street, Dunstable, Beds.
 Boys' Brigade Old Boys "A"—B. A. Cox, 109a, Stockingstone-road, Luton.
 Central Seniors—R. S. Old, c/o Central Youth H.Q., Waller-street, Luton.

DIVISION IV

Bramingham Rovers "A"—M. Burnett, 6 Gardenia-avenue, Luton.
 Challney Old Boys "A"—A. W. Head, 54 Florence-avenue, Sundon Park, Luton.
 Dunstable Albion Reserves—M. Mitchell, 86 High-street, North, Dunstable, Beds.
 Harlington Reserves—P. Thurman, 4 Daubeney-close, Harlington, nr. Dunstable, Beds.
 Hydrosteer—K. A. Jewhurst, 58, Tomlinson-avenue, Luton.

Laporte Reserves—Dr. J. S. Ashton, c/o Development Dept., Laporte Ltd., Luton.
 Luton St. Mary's—B. Curl, 52 Chalton Heights, Chalton, Beds.
 St. Andrew's Robin Hoods Reserves—P. Mardle, 4 Front-street, Slip End, nr. Luton.
 Slip End United—R. Wood, 43 Summer-street, Slip End, nr. Luton.
 Tithe Farm Reserves—W. Vine, 100 Tithe Farm-road, Houghton Regis, Dunstable, Beds.
 Tower United—D. R. Harris, 120 Abbots Wood-road, Luton.
 Wilden Athletic "B"—A. B. Gatward, 12 St. Catherine's-avenue, Luton.
 Westoning Reserves—R. Skelton, 55 Spensley-road, Westoning, Beds.
 Luton Torchbearers—G. F. Twist, 3 Calnwood-road, Luton.

SUNDAY SECTION

DIVISION I

Bird in Hand—J. Puddephatt, 72 Worthington-road, Dunstable, Beds.
 Boss Trucks United—B. J. Saunders, 158 Stanbridge-road, Leighton Buzzard.
 Barrell United—T. Farmer, 39 Cannon-lane, Stopsley, Luton.
 Luton Celtic "A"—H. Magill, 27 Dorset-street, Luton.
 Luton Social—K. Lea, 36 Bristol-road, Luton.
 Midland United—R. Randall, 28 Cowridge-crescent, Luton.
 Oddfellows—D. Major, 22 Mossbank-avenue, Luton.
 Sandown Athletic—B. W. Head, 28 Fountains-road, Luton.
 Sundon Park O.C.—J. Rice, 29 Spinney-road, Sundon Park, Luton.

DIVISION II

Challney Old Boys—A. W. Head, 54 Florence-avenue, Sundon Park, Luton.
 Hitchin Athletic—A. F. Bird, "The Porch," North Bridge-street, Shefford, Beds.
 Icknield Community Association Youth Club — P. F. Bright, 21 Allenby-avenue, Dunstable, Beds.
 Luton Celtic "B"—M. McManus, 27 Dorset-street, Luton.
 Luton Rangers—R. J. Mead, 19, Ambleside, Luton.
 Midland United "A"—R. Randall, 28 Cowridge-crescent, Luton.
 Oddfellows Reserves—D. Holloway, 58 Masfield-road, Harpenden, Herts.
 Press United—D. Kingsley, 44 Old Bedford-road, Luton.
 Tower United—K. Giles, 9 Whitecroft-road, Luton.

SPARTAN LEAGUE

	P	W	D	L	F	A	P
Croydon Athletic	34	29	2	3	123	28	60
Borhamwood	34	21	7	6	88	45	49
Petter Sports	34	22	4	8	75	47	48
Hoddesdon	34	19	9	6	86	45	47
Cheshunt	34	22	2	10	105	38	46
Chalfont	34	17	7	10	77	62	41
Vauxhall Motors	34	15	9	10	68	39	39
Molesey	34	12	8	14	60	72	32
Wood Green Town	34	13	5	16	77	73	31
Willesden	34	11	9	14	53	65	31
Staines Town	34	13	4	17	71	83	30
Ruislip M.	34	11	8	15	68	80	30
Marlow	34	11	6	17	66	76	28
Huntley & Palmer	34	8	9	17	38	84	25
Crown and M.	34	8	6	20	46	91	22
Tring Town	34	5	9	20	38	101	19
Kingsbury	34	7	4	23	46	88	18
Rayners L.	34	6	4	24	43	111	16

ISTHMIAN LEAGUE

	P	W	D	L	F	A	P
Wimbledon	38	27	6	5	87	44	60
Hendon	38	25	4	9	124	38	54
Kingstonian	38	24	4	10	100	62	52
Sutton United	38	23	5	10	99	64	51
Enfield	38	20	10	8	96	56	50
Oxford C.	38	20	8	10	90	55	48
Tooting & Mitcham	38	19	8	11	78	51	46
St. Albans City	38	14	12	12	62	63	40
Ilford	38	16	8	14	75	79	40
Maidstone United	38	15	8	15	65	71	38
Walthamstow	38	15	6	17	70	66	36
Leytonstone	38	14	8	16	66	71	36
Wycombe Wanderers ...	38	13	6	19	74	80	32
Hitchin Town	38	14	4	20	67	100	32
Bromley	38	11	8	19	64	75	30
Barking	38	10	9	19	46	69	29
Woking	38	10	9	19	48	88	29
Corinthian-Casuals	38	10	4	24	52	92	24
Dulwich Hamlet	38	6	12	20	47	97	24
Clapton	38	2	5	31	31	120	9



A hip-length jacket ideally suited for motoring. Fitted with a pleated back for freedom of movement, and patent double windflap front. Knitted inset collar with narrow frame. Side vents, striped back buggy lining. Available in Lovat and Beige.

Price: £13.13.0

A full range of
GANNEX
 The Best All-Weather Cloth
 in the World

Weatherwear can
 be seen at

Buttons
 of
 Luton

The Store for Men and Women

Luton 31313



Truly a coat without equal, this classic raglan model with faced lapels is ideally suitable for formal wear. Three-quarter length, centre vent back, vertical welt pockets with a newspaper slit in the left side. Knitted inset scarf collar. Full buggy aero lining, and sleeve lining. Available in Lovat and Beige.

Price: 18 and 21 gns.

Also available in a full-length version at 22 gns.

SOUTH MIDLANDS LEAGUE

President: Mr. H. Horsler.

Chairman: Mr. A. G. Joyce.

Hon. Secretary and Treasurer, Mr. F. C. Crain,
6 Chandos Road, Luton. Telephone 52576.

PREMIER DIVISION

	P	W	D	L	F	A	P
Electrolux	32	23	4	5	91	28	50
Stotfold	32	21	6	5	85	44	48
Shefford Town	32	22	0	10	96	59	44
Addmult	32	19	6	7	75	47	44
Hemel Hempstead United	52	19	4	9	79	59	42
Harpenden Town	32	19	3	10	100	56	41
Shillington	32	16	2	14	82	68	34
Amphill Town	32	16	2	14	73	70	34
Baldock Town	32	13	7	12	68	64	33
AC-Delco	32	13	2	17	62	79	28
Luton Skefko Athletic	32	11	5	16	59	77	27
Leighton Town	32	10	6	16	66	76	26
Stony Stratford Town	32	11	4	17	70	88	26
Bedford Queen's Works	32	9	4	19	74	112	22
Sandy Albions	32	6	8	18	64	86	20
Stewartby	32	4	9	19	47	88	17
Totternhoe	32	2	4	26	49	139	8

DIVISION I

	P	W	D	L	F	A	P
Houghton Regis	32	21	9	2	94	45	51
Hunting Athletic	32	20	5	7	73	37	45
Arlesey Town	32	21	2	9	93	38	44
Luton Kent's Athletic	32	18	7	7	80	44	43
Eaton Bray United	32	19	2	11	105	71	40
Tickford Sports	32	15	4	13	79	86	34
Old Lutonians	32	12	9	11	83	82	33
Esavian Sports	32	14	3	15	99	68	31
Kodak	32	14	3	15	96	110	31
Marshmoor	32	12	6	14	68	62	30
Marston Shelton Rovers	32	12	6	14	69	72	30
Langford	32	12	5	15	85	98	29
Royston Town	32	12	4	16	89	97	28
K. & L.	32	11	4	17	76	94	26
Barton Rovers	32	12	2	18	74	92	26
Vauxhall Motors Colts	32	6	6	20	48	107	18
Waterlow's	32	1	3	28	49	157	5

RESERVE SECTION

DIVISION I

	P	W	D	L	F	A	P
Shefford Town	28	20	1	7	98	41	41
Bedford Queen's Works	28	18	4	6	120	50	40
Electrolux	28	18	3	7	103	48	39
Harpenden Town	28	18	2	8	85	53	38
Leighton Town	28	14	3	11	90	75	31
Hunting Athletic	28	14	3	11	70	64	31
Hemel Hempstead United	28	12	7	9	38	44	31
Stotfold	28	12	5	11	66	64	29
Luton Kent's Athletic	28	11	5	12	61	71	27
Amphill Town	28	11	4	13	59	75	26
AC-Delco	28	10	1	17	57	90	21
Sandy Albions	28	8	4	16	46	78	20
Addmult	28	8	4	16	52	93	20
Totternhoe	28	5	5	18	44	101	15
Houghton Regis	28	5	1	22	42	84	11

DIVISION II

	P	W	D	L	F	A	P
Arlesey Town	30	26	0	4	137	31	52
Baldock Town	30	23	3	4	130	49	49
Marshmoor	30	20	3	7	104	70	43
Esavian Sports	30	20	2	8	137	51	42
K. & L.	30	17	4	9	109	75	38
Eaton Bray United	30	14	7	9	87	65	35
Luton Skefko Athletic	30	15	5	10	91	75	35
Shillington	30	15	4	11	114	80	34
Barton Rovers	30	10	6	14	61	73	26
Royston Town	30	10	2	18	65	88	22
Tickford Sports	30	9	3	18	77	108	21
Old Lutonians	30	9	3	18	59	97	21
Stewartby	30	7	4	19	55	97	18
Marston Shelton Rovers	30	7	3	20	59	150	17
Waterlow's	30	7	1	22	45	142	15
Kodak	30	6	0	24	43	122	12

THE GREEN 'UN
EVERY SATURDAY FOR
ALL LOCAL
SPORTS RESULTS

Bedfordshire Football Association

President: Lord Luke of Pavenham.

Hon. Secretary and Treasurer: Mr. A. D. McMullen, 37, Halfway-avenue, Luton. Telephone Luton 52765.

LAST SEASON'S CUP WINNERS

Professional: Bedford Town

Senior: Potton United

Intermediate: Kent's Athletic.

Junior: Leighton Old Boys.

Youth Cup (under 18): Limbury O.B.

Youth Cup (under 16): Luton Dynamos

Junior Charity Cup: Westoning.

BEDFORDSHIRE COUNTY CUP

DATES

1964-65

SENIOR CUP

Preliminary Round	October	17
First Round	November	14
Second Round	February	13
Semi-Finals	March 13 and March	20

INTERMEDIATE CUP

Preliminary Round	September	26
First Round	October	31
Second Round	November	21
Third Round	January	23
Semi-Finals	February	13

JUNIOR CUP

Extra Preliminary Round	September	12
Preliminary Round	October	3
First Round	November	7
Second Round	December	12
Third Round	February	6
Semi-Finals	February	27

JUNIOR CHARITY CUP

Preliminary Round	September	19
First Round	October	10
Second Round	November	28
Third Round	January	30
Semi-Finals	February	20



ROUTE 212 — Hourly Service between
LUTON, BARTON, SHILLINGTON
AND HENLOW CAMP

Also serving

Gravenhurst, Campton, Meppershall and
Stondon.

ROUTE 205 — between
LUTON and KIMPTON

Frequent Service Monday to Friday.

Hourly Service on Saturday. No Service on Sunday.

Additional Saturday Afternoon Journeys
on all routes.

Time-tables available on application.

COACHES AVAILABLE FOR PRIVATE HIRE

Any size party

Any distance

Local Depot

LONDON ROAD, HENLOW CAMP

Telephone Henlow Camp 244

Go by bus!

TOP OF THE LEAGUE
FOR WARMTH!

SOLID FUEL

from

Wm. HOLES

(LUTON) LTD.

3 Gordon Street, Luton

Telephone 32101

Stock up now at

SUMMER PRICES

LUTON DISTRICT AND SOUTH BEDS LEAGUE

President: Major-General Sir Harold Wernher, G.C.V.O.

Senior Vice-President: Lady Zia Wernher.

Life Members: Messrs. P. Stevens and W. Pease

Chairman: Mr. R. B. Gibbard.

Vice-Chairman: Mr. R. Cooper.

Hon. Secretary and Treasurer: Mr. F. S. G. Moore
35, Cowridge Crescent, Luton. Phone Luton 27475

Hon. Referees and Match Secretary: Mr. D. S. Bone.

Hon. Press Secretary: Mr. E. H. Pugh, Luton News

Executive Committee: Messrs. J. Brandham, R. Cox, A. E. Gale, R. G. Taylor.

PREMIER DIVISION

	P	W	D	L	F	A	P
Grange Albion	28	26	1	1	140	31	53
Toddington Rovers	28	17	4	7	102	59	38
Stockwood Athletic	28	17	3	8	83	62	37
Luton Red Lion	28	15	4	9	78	63	34
Luton Spartans	28	13	7	8	89	65	33
Pioneer Corinthians	28	15	3	10	100	78	33
Commer	28	12	3	13	59	69	27
Luton Boys' Club	28	11	2	15	67	92	24
Stopsley	28	9	5	14	65	72	23
Laport	28	9	5	14	59	62	23
Luton Blue Star	28	10	2	16	78	98	22
Brache Sparta	28	9	3	16	71	95	21
Walcot Athletic	28	6	6	16	57	93	18
Vauxhall (Dunstable)	28	7	4	17	54	103	18
Bells Park	28	7	2	19	53	113	16

DIVISION I

	P	W	D	L	F	A	P
Wilsden Athletic	28	22	2	4	125	36	46
Hungarian United	28	20	4	4	119	39	44
Luton Hotspur	28	20	2	6	143	50	42
Heath United	28	20	2	6	100	52	42
B.B.O.B.	28	18	4	6	97	52	40
Caddington	28	18	2	8	74	56	38
Slapton Rovers	28	13	3	12	100	91	29
Hunting Athletic	28	12	3	13	80	64	27
Grange Albion Reserves	28	11	3	14	48	96	25
Luton Red Lion "A"	28	11	2	15	45	88	24
Offley	28	7	4	17	59	96	18
Luton Spartans "A"	28	6	3	19	50	116	15
Stopsley Reserves	28	6	2	20	60	84	14
Leaside and Limbury	28	3	2	23	43	140	8
Ringpark Rangers	28	3	2	23	28	111	8

DIVISION II

	P	W	D	L	F	A	P
Central Old Boys	26	24	0	2	167	50	48
Luton Brewery	26	18	5	3	92	32	41
Neville Athletic	26	18	2	6	109	53	38
Harlington	26	17	3	6	112	67	37
Luton Water Company	26	14	4	8	86	53	32
Bagshawe	26	14	3	9	108	91	31
St. Andrew's	26	11	5	10	90	70	27
H. C. Janes Rec. Club	26	11	2	13	88	99	24
Wilsden Athletic "A"	26	8	3	15	60	90	19
Walcot Athletic Reserves	26	8	2	16	74	121	18
Linslade United	26	7	1	18	50	95	15
High Town United	26	6	3	17	57	133	15
Stockwood Athletic Res.	26	6	0	20	54	116	12
Luton Blue Star Res.	26	2	3	21	44	121	7

DIVISION III

	P	W	D	L	F	A	P
Westoning	22	18	1	3	105	37	37
Bramingham Rovers	22	17	2	3	105	35	36
Toddington Reserves	22	16	1	5	74	40	33
Challney Old Boys	22	10	3	9	81	50	23
Tithe Farm	22	10	3	9	65	64	23
Luton Gas Works	22	9	5	8	56	63	23
Brache Sparta Reserves	22	8	3	11	44	61	19
Three Star Engineering	22	7	4	11	46	70	18
Caddington "B"	22	6	4	12	52	69	16
College of Technology	22	7	2	13	48	93	16
B.B.O.B. "A"	22	5	2	15	50	82	12
Luton St. Mary's	22	2	4	16	32	94	8

DIVISION IV

	P	W	D	L	F	A	P
Luton Rangers	26	21	2	3	149	33	44
61 Club	26	19	3	3	142	47	43
Tower United	26	19	3	4	105	45	41
Wesley Wanderers	26	17	3	6	105	56	37
Runfold United	26	16	2	8	106	55	34
Harlington Reserves	26	15	3	8	87	75	33
Slip End United	26	10	4	12	72	58	24
Wilsden Athletic "B"	26	11	2	13	74	100	24
Laport Reserves	26	9	4	13	52	82	22
Hydrosteer	26	6	4	16	59	111	16
Luton Torchbearers	26	6	3	17	51	85	15
Westoning Reserves	26	4	6	16	59	119	14
Dunstable Albion	26	4	3	19	26	118	11
Auto Body Dies	26	2	2	22	32	135	6

SUNDAY SECTION

	P	W	D	L	F	A	P
Bird in Hand	26	24	1	1	227	29	49
Sundown Park O.C.	26	22	0	4	145	58	44
Sandown Athletic	26	19	2	5	129	52	40
Luton Rangers	26	14	2	10	115	84	30
Tower United	26	14	1	11	90	94	29
Challney Old Boys	26	13	2	11	122	110	28
Oddfellows XI	26	13	2	11	85	74	28
Boss Trucks United	26	13	1	12	90	107	27
Icknield C.C.	26	11	1	14	65	90	23
Luton Hotspur	26	11	0	15	108	112	22
Hitchin Athletic	26	6	3	17	51	144	15
Midland United	26	5	2	19	63	138	12
Dunstable Albion	26	3	4	19	61	178	10
Tithe Farm	26	3	1	22	45	126	7

CHILTERN YOUTH LEAGUE

14-18 SECTION

DIVISION I

	P	W	D	L	F	A	P
Cambridge C.	16	14	1	1	87	29	29
Limbury O.B.	16	13	1	2	81	28	27
Dynamo B.C.	16	7	4	5	55	41	18
Icknield	16	8	0	8	40	50	16
Cherry Hinton	16	7	2	7	57	38	14
Harpden T.	16	4	4	7	44	37	14
Vauxhall	16	3	4	9	28	59	10
St. Andrew's	16	2	4	10	34	65	8
Luton B.C.	16	4	0	12	27	108	8

DIVISION II

	P	W	D	L	F	A	P
Pioneer B.C.	20	19	0	1	147	26	38
Central Y.C.	20	19	0	1	149	16	38
Community Centre	20	14	0	6	100	57	28
Limbury O.B.	20	12	0	8	127	54	24
Runfold Utd.	20	11	1	8	65	59	23
Biscot Mill B.C.	20	8	2	10	94	55	18
Vauxhall Motors	20	8	2	10	46	54	18
Leagrave Methodist	20	7	1	12	63	92	15
Luton B.C.	20	4	0	16	38	133	8
Commer Cars	20	3	1	16	37	138	7
Dunstable Y.P.C.	20	1	1	18	12	194	3

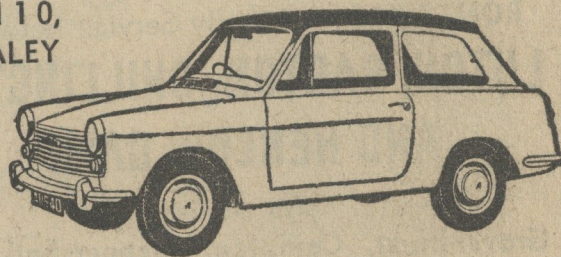
Championship play-off: Pioneer B.C. 2, Central Youth 1.

for AUSTIN

DUNSTABLE MOTOR CO. LTD.

for ROOTES

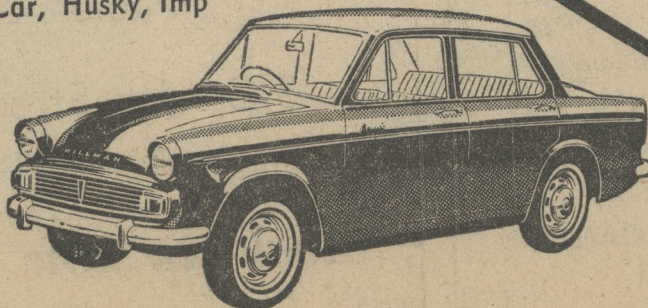
MINI, MINI-COOPER
A40, A60, A110,
1100, AUSTIN HEALEY



AUSTIN OR ROOTES
We give you the best of
both worlds

HILLMAN 1600 De-luxe, Super Minx,
Estate Car, Husky, Imp

SUNBEAM
Rapier
HUMBER
Sceptre
Hawk
Super Snipe
Estate Car



CO. LTD.
TELEPHONE 62111