

*Official Handbook*

1951-52

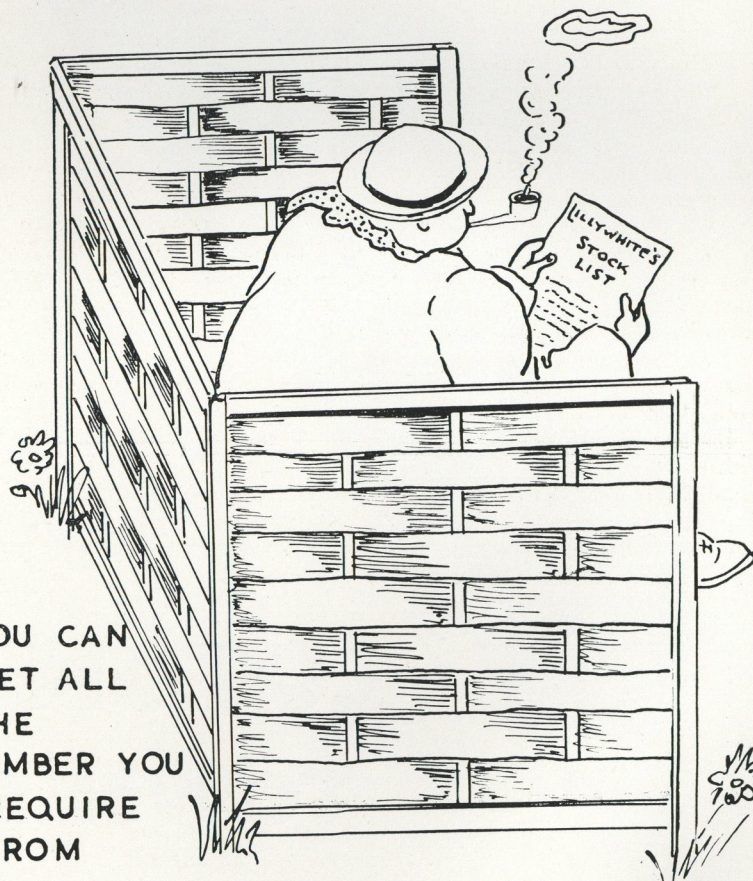


**LUTON**  
**TOWN**  
FOOTBALL CLUB

PRICE . . 1/-



**TIMBER** WILL DO ANY JOB  
YOU HAVE YOU KNOW & IT DOES  
MAKE IT JUST THAT BIT MORE  
PRIVATE!



YOU CAN  
GET ALL  
THE  
TIMBER YOU  
REQUIRE  
FROM

**LILLYWHITE'S**

LEAGRAVE ROAD LUTON  
PHONE 2812-3

## LUTON TOWN FOOTBALL CLUB

### INTRODUCTION

*by the*

*President and Chairman*

**I** WELCOME this opportunity to address a few remarks to you through this, the first edition of the Club's Official Handbook, a publication which, I hope, you will find useful and interesting.

The present season, after the first two games, has been a very remarkable one for us as the team went eight matches before being beaten, so that at the beginning of October we began to have visions of accomplishing that for which we have striven so long, viz. First Division status. Two points in October, however, has brought home to all, I think, the fact that it is only consistency which will get us to the top. The strange thing about this season is that we are doing better away than at home. Injuries, unfortunately, have again caused a setback at the present.

Despite this temporary setback we still have confidence in our boys, and were it not for the fact that our finances are not everything that we would wish we should make good at once the weaknesses which we see need strengthening. However, my Board look forward with confidence to the future. May I appeal to all lovers of the game to support the Club, as it is only by doing this that the Club can accomplish their ambition.

My colleagues on the Board of Directors and I will do all in our power to make our Club one of which we may be justly proud. Thank you for your past support and my best wishes to you all.

*Charles Jukes.*

*President and Chairman.*

**L. Greener**

DELIVERY TO ALL PARTS

Phone : LUTON 2926

**60, WELLINGTON STREET**

WINE  
SPIRIT  
&  
BEER  
MERCHANT

(Corner of Stuart St.)



## THE GOLDEN GRILL RESTAURANT

CASTLE STREET, LUTON.

'Phone: 4776

*offer a large selection of choice dishes at moderate prices.*

Meet your friends for MORNING COFFEE, LUNCHEON,  
TEA or SUPPER.

*The Restaurant is under New Management, and has been  
newly decorated.*

PERSONAL SUPERVISION.

## William Holes

(LUTON) LTD.

*Your Coal and Coke Merchant*

BRITISH RAILWAYS PARCEL AGENTS PASSENGER DEPT.

TELEPHONE



LUTON 210

3 GORDON STREET LUTON

## J. F. TOOLEY (LUTON) LTD.

★ CORN, SEED AND BULB MERCHANTS, ★

**For your Horticultural Requirements.**

Sole suppliers to Luton Town Football Club for  
Turf, Lawn Seed, Loam, Weed Killers & Fertilisers.

**44 PARK STREET - - LUTON**

Telephones: Luton 4241 - 4242.

Catalogues Free on Application.

## A Short History of the Club

ON THE 11th day of April, 1885, at the Council Chamber, Town Hall,

Luton a Public Meeting was "convened for the purpose of considering the advisability of forming a Town Football Club," and after a few preliminary remarks by the Chairman, Mr. John Cotchin, the following Resolution was duly passed—"That this Meeting establish a Luton Town Football Club." A later Resolution at the same meeting decided "that the colours of the Club be Navy Blue and Pink, a Shirt and Cap to be worn by each member when playing." At the Meeting held at the Alexandra Coffee Tavern, Luton, on 9th September 1885 it was proposed "that the first Practice Match of the season be on Saturday next, September 12th in the Club's meadow in Dallow Lane," and a further Minute reads "Mr. Long and Mr. Knowles are authorised to buy scaffold poles to be made into goal posts, and also a ball for practice." It was also proposed at that Meeting "that the Midland Hotel be the Headquarters of the Club," which, we observe, was "carried unanimously." There is much such interesting reading in the Minute Books which fortunately have been preserved, but it would take too long here to relate it all. Nevertheless we would like to add the following two Minutes (1) dated 15th December 1890 when "It was Resolved that 5/- per week be offered to the brothers F. and H. Whitby and Reed" and (2) dated 10th August 1891 which was passed after the players Saunders, Wright, Hoy, Deacon, Burley, Cheshire, F.E. and H. Whitby had taken part in a Meeting specially called for the purpose "that the Players be allowed 2/6 per week for matches played at Home, 6d. extra for out matches, while time lost before 12 a.m. to be made up to them on reasonable terms." So Luton Town Football Club entered full professional status as early as 1891 and our first "gate" as such, on 5th September in that year was £3. 0. 1. ! It is interesting to note that we were the first professional Club in the South of England.

Friendly matches were the order of the day from 1885 until 1894 when we became one of the original members of the Southern League. In our first season 1894/95 we finished second to Millwall Athletic and the same thing happened in the following Season. In the year 1888 the Football League was formed and six years later in 1896 we made our first application for inclusion as Members. We were not elected as we cast only 10 votes, but in the following year were more successful and were received into the Second Division. In that first year we finished 8th in the Table, the following season finished 15th and the following season 1899/1900 finished bottom place but one. Support during those last two seasons had been very poor and the Club was in sore financial straits. The Directors stepped in and took over the whole burden on their shoulders, otherwise the Club would most probably have passed out of existence. At the same time the Board felt that a return to the Southern League would be more beneficial in every way, and so application was made, and accepted. In an attempt to put the Club on a sound financial basis the Board decided to form a limited liability company, appealing to the public to take up shares. The response was very good, and as a result the Club was registered as a Public Company on 28th June 1897. We had meanwhile moved from Dallow Lane (the site now occupied by Browns Saw Mills) to Dunstable



Road (where the Odeon Cinema now stands) but this also was too confined. Negotiations were then opened up for the present site in Kenilworth Road which were successful, and the official opening took place on the evening of Monday, 4th September 1905,—in the first match of the 1905/06 season, our opponents being Plymouth Argyle. There was a remarkable coincidence about this match in connection with the word Green. The ball was kicked off by Mr. J. W. Green (of J. W. Green Ltd.) the referee's name was a Mr. Green, the name of the Luton Town Secretary was Mr. Charles Green, Plymouth Argyle's shirt colours then as now were green, and of course being the opening match of the season the pitch was a lovely green. Quite a number of coincidences which were freely remarked upon at the time.

We continued as Members of the Southern League until 1920 when the Football League formed a Third Division (Southern Section) and we decided to join it. In that first season we finished in the 9th place but in the following two seasons did much better, 1921/22 finishing fourth place and 1922/23 in fifth place. During that time we had such players as Harry Bailey and Tom Gibbon (goalkeepers), George Lennon, Alfred Tirrell, Sid Hoar, George Butcher, Sidney Reid, Bill Jennings, Harry Higginbotham, Ernie Simms, Allan Mathieson, Louis Bookman, Arthur Row, and many others we would like to mention. We had many ups and downs after that until 1934/35 when we finished fourth, in 1935/36 finished second to Coventry City and in 1936/37 came our greatest triumph to date when we were promoted to the Second Division. In that season we won 27, lost 11, drew 4, scoring 103 goals against 53, Joe Payne sharing with Harston of Mansfield the honour of being the highest goal scorer with 55 each that season. We must not forget also that other splendid feat by Joe Payne when on Easter Monday, 1936, he scored 10 goals in the match at Kenilworth Road against Bristol Rovers, a record which still stands today and will probably stand for all time.

We have been called upon on quite a number of occasions to provide players to represent their country, and the name which most readily comes to mind, especially to our older supporters when International matches are mentioned, is that of Bob Hawkes. Bob was born in the little village of Breachwood Green, just outside Luton, and first played for us season 1901/02. He was the idol of the Luton supporters for many years and no praise is high enough for the splendid service Bob rendered the Club until his retirement season 1919/20 and was appointed a Life Member in appreciation of that service. While on the subject of International players there is one unique record this Club holds of which we are very proud. This is that while still a member of the Third League three of our players were chosen to represent their country at the same match. The occasion was the International Match between Ireland and England at Windsor Park, Belfast, on 22nd October 1921 when Allan Mathieson (inside left) and Louis Bookman (outside left) were chosen for Ireland and Ernie Simms was chosen to play at centre forward for England. All three were chosen several times but this was the only occasion on which they all played in the same International match. We have at present two players who are on the verge of International honours, Sid Owen and Bernard Streten, while of course Bud Aherne has been automatic choice for Eire at left back for a number of years and has already played for them this season versus Germany.

Coming to the officials who have served the Club so faithfully for a

number of years, first and foremost is Mr. Harry Arnold, who joined the Board on 19th May 1893, was appointed President and Life Member on 1st July 1929, and continued to be a very interested member until his death in 1946, a total service of 54 years. Another name we feel we must mention is Mr. Charles Green, whom we are very glad to say is still with us and who was a regular spectator until a serious illness overcame him last season. He was appointed Secretary in 1901 and continued so until he retired on 31st October 1928, when he was appointed a Life Member—another official of the Club whose connection has lasted over fifty years. On the training side we have Tom Mackey who joined the Club as a player from Sheffield Wednesday on 16th June 1932 and who continued as a player until the end of season 1937/38 when he was appointed Assistant Trainer to Arthur Pembleton, a happy association which lasted until April 1947 when Arthur had to retire from the game he loved so well due to the development of an injury he had received during his playing days. Tom is still with us, sharing with Ralph Hann the exacting task of getting the players free from cuts and bruises and ligament troubles, etc. by "the following Saturday." Dr. Crarer too, our Honorary Medical Officer, we wish to include in this brief write-up, for he has been associated with this Club since 1929. His knowledge and experience of football injuries is second to none and he is still taking a very active part in the Club's welfare and health.

This must of necessity be only a very brief history of the Luton Town Football Club but we hope it has been the means of recalling very pleasant memories to our older supporters, and at the same time stimulated fresh interest in the minds of our more recent supporters and younger members. The present season has begun very well for us and we are hoping that this happy state of affairs will continue, so that our Chairman's dearest wish of seeing Luton Town in the First Division will be accomplished.

Support your Local Industry

by always insisting

on —

**EXLNT**

**PADDY**

**PAYFORD'S**

**POTATO CRISPS**

**PAYFORD FOOD PRODUCTS LTD.**  
**LEAGRAVE ROAD - - - LUTON.**



# DIRECTORS



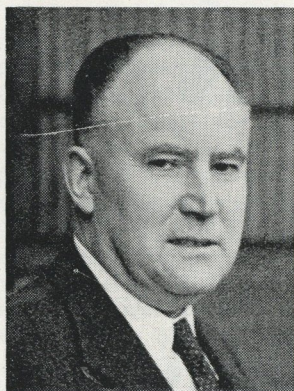
**CHARLES JEYES, C.A.**  
(President and Chairman)

Elected to the Board of Directors 25th July, 1927. First appointed Chairman in 1933. Upon the death of Mr. Harry Arnold in 1946 was appointed President in honour of the very fine services rendered the Club.



**P. G. MITCHELL**  
(Vice-Chairman)

Elected to the Board of Directors 4th July, 1934 and was appointed Vice-Chairman 29th March, 1949.



**A. F. ENGLAND**  
(Director)

Elected 14th March, 1939.



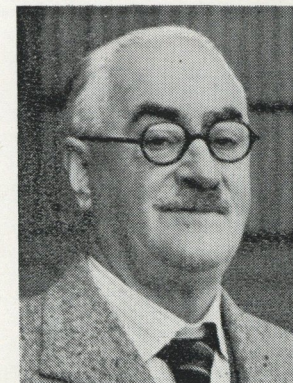
**H. S. HEWSON**  
(Director)

Elected 21st March, 1932.



**H. RICHARDSON**  
(Director)

Elected 24th March, 1937.



**E. HUGH WOODS**  
(Director)

First elected 23rd August, 1909 until 1914. Re-appointed 20th March, 1933.



**P. W. WRIGHT**  
(Director)

Elected 20th March, 1933. Has rendered valuable service to the Club both as Vice-Chairman and as President of the Bobbers Stand Club.

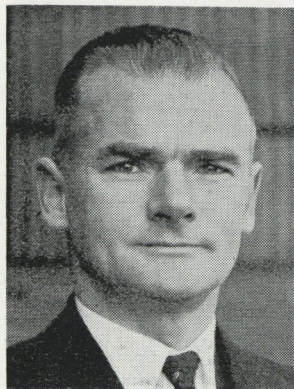


**D. DUNCAN**  
(Team Manager)

Signed from Derby County as Player/Coach 25th October, 1946. Appointed Player/Manager 13th June, 1947 and Team Manager 20th April, 1948. Began football career at age of 17 with Hull City, then he joined Derby County with which Club he gained a Cup Winner's Medal and 9 International Caps playing for Scotland. Born in Aberdeen.



LUTON TOWN FOOTBALL CLUB.



**P. COLEY**  
(Secretary)

Appointed 6th May, 1946 on the cessation of War-time football.



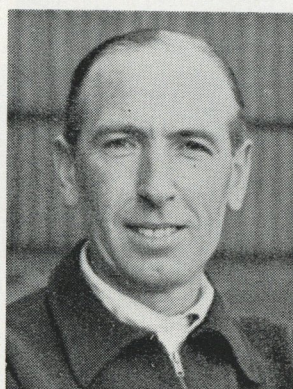
**R. HANN**  
(Head Trainer)

Appointed 4th August, 1947. Signed for Newcastle United 1930. Was transferred to Derby County in 1932. Was at Derby 14 seasons, when he was appointed Trainer at Crystal Palace and from there on to Luton.



**T. S. MACKEY**  
(Trainer)

Signed from Sheffield Wednesday 16th June, 1932. Appointed Assistant Trainer 3rd August, 1938. Was a regular playing member of our promotion team season 1936/37.



**T. KELLY**  
(Coach)

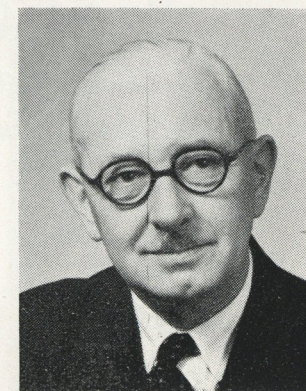
Appointed 1st August, 1951. On Beds. F.A. Panel of Coaches since 1946. Played for Fulham F.C. at Inside Forward 1929 to 1932.

LUTON TOWN FOOTBALL CLUB.



**J. R. SANDERSON**  
(Head Groundsman)

Signed from Wolverhampton Wanderers 20th May, 1946. A serious injury sustained in 1947 ended his football career. Appointed Groundsman when his Contract with the Club ended 1st May, 1948.



**Dr. E. J. CRARER, M.B., Ch.B.**  
(Hon. Medical Officer)

Appointed 1929. Takes a very keen interest in the Club's affairs and the players' welfare.

WE DO "LUTON TOWN'S"  
LAUNDRY WORK  
MAY WE DO  
YOURS ?

THE  
**LUTON SANITARY STEAM LAUNDRY**  
COMPANY LIMITED  
DUNSTABLE ROAD, LUTON, BEDS.

OUR VANS  
COLLECT AND  
DELIVER IN ALL DISTRICTS  
TELEPHONE 448.  
LAUNDERERS SINCE 1893.



# HUMPHREY & SCOTT LTD.

64-66 STUART STREET, LUTON, BEDS.

Luton  
5757  
/8/9.

Manufacturers of

**CARDBOARD**

**BOXES & CARTONS**

of every description  
including printed folding  
cartons and  
collapsible printed  
flower and fruit boxes

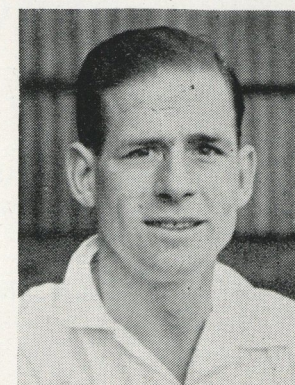
**SPECIALISTS IN  
PRE-PACKAGING  
A.I.D. APPROVED**

## LUTON TOWN FOOTBALL CLUB.



### BERNARD REGINALD STRETEN

Capped for England's Amateur team and R.A.F. team in all their matches 1946/7 season. Gained first full professional cap for England versus Ireland at Manchester during 1949/50. Born Gillingham. A brilliant and spectacular goalkeeper.  
Position—Goalkeeper.



### WILLIAM HENRY COOKE

Born Chesterfield. Was secured from Bournemouth in 1945 after playing for Luton as a war-time guest player. Has just completed his 200th league appearance. A very strong defender, making the perfect foil for Bud Aherne on the other side.  
Position—Right Full Back.



### THOMAS AHERNE

Signed from Belfast Celtic in March 1949. Has played for his country, Eire, in every International match during the past two seasons and already capped versus Germany this season. A classic back, some of his displays this season have been a joy to watch.  
Position—Left Full Back.



### ROBERT HENDRY MORTON

A local boy who signed Amateur forms for Luton August 1944 and professional forms February 1946. Played his way through "A" team, Reserve team and is now a regular member of our first team. Very strong player.  
Position—Wing Half. Can also take a turn at Centre Forward.



Established 1879

## SELL, MITCHELL & SONS

AUCTIONEERS, SURVEYORS & VALUERS,  
LAND, HOUSE and ESTATE AGENTS.

RESIDENTIAL, BUSINESS & INVESTMENT PROPERTIES, ETC.  
ALWAYS AVAILABLE & REQUIRED IN  
LUTON & SURROUNDING DISTRICTS.

RENTS COLLECTED :: ESTATES MANAGED

Offices :

7 & 9 PRINCESS STREET  
and 85 STUART STREET, LUTON

TELEPHONE : 2003

VAUXHALL — BEDFORD  
SERVICE



**PLOWMANS LTD.**

HITCHIN ROAD  
LUTON



'PHONE : 2226

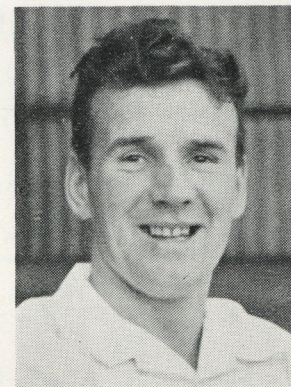
## LUTON TOWN FOOTBALL CLUB.



**SIDNEY WILLIAM OWEN (Capt)**

Converted into a Centre Half after coming from Birmingham City in 1947 as a wing half. Made the trip with the F.A. touring side to Australia last summer. Selected to play in F.A. Representative XI versus Army and again versus Cambridge University already this season.

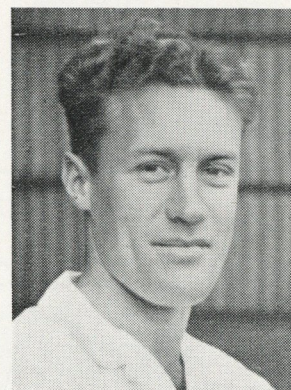
Position—Centre Half.



**CHARLES WATKINS**

Had seven seasons with Glasgow Rangers prior to joining Luton in September 1948. Played for the Rangers against the Russian Dynamos at the end of 1945. Has made over 100 League appearances for Luton Town. Very strong in the tackle and distributes the ball well. Is a qualified Physio Therapist.

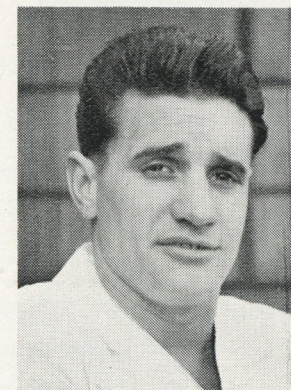
Position—Wing Half.



**RONALD ALFRED DAVIES**

Twelve months ago our ex-player Billy Arnison recommended Davies—his fellow South African—but it was only in May that he was finally secured for a substantial fee from Clyde. Is a go ahead winger and wastes no time in centring the ball, although can hold it when the occasion demands.

Position—Outside Right.



**JOHN EPHRAM TAYLOR**

Signed from Stockton-on-Tees in 1949. Is leading goal scorer for Club so far this season, including hat trick at Leicester. Very quick off the mark and a splendid shot.

Position—Inside Forward.



Have Your Watches Repaired By An Expert.

## Uneek Watch & Clock Co.

ALL WORK GUARANTEED

25, CHAPEL STREET, \_\_\_\_\_ LUTON.

★ PERSONAL SUPERVISION ★

Before & After the Match meet your Friends at

## THE REGAL RESTAURANT

FOR

★ MORNING COFFEE

★ LUNCHEONS

★ TEAS

★ SUPPERS

★ ★ ★

OPEN FROM 8.30 a.m. to 11 p.m.

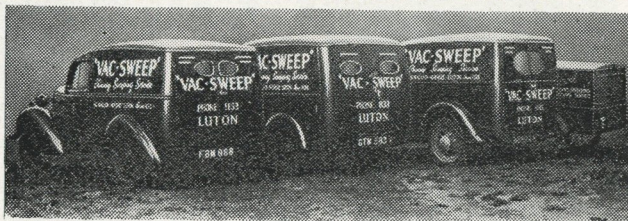
FOOTBALL PARTIES SPECIALLY CATERED FOR

18 LEAGRAVE ROAD, LUTON, BEDS.

'Phone : 1032

EST. 1945

The only firm  
operating its  
own patented  
process.

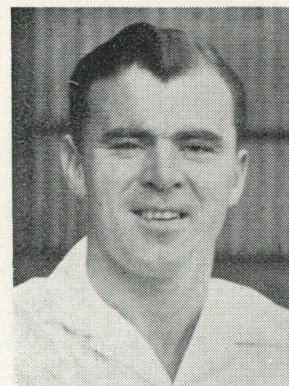


THE LEADING

### VACUUM CHIMNEY SWEEPS in the district.

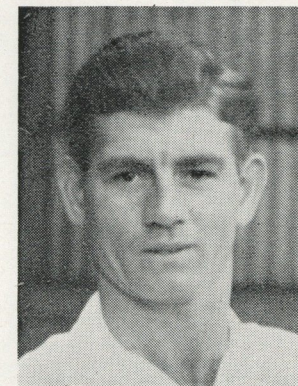
"VAC-SWEEP" 88, WALLER AVENUE, LUTON 'Phone : 1133

## LUTON TOWN FOOTBALL CLUB.



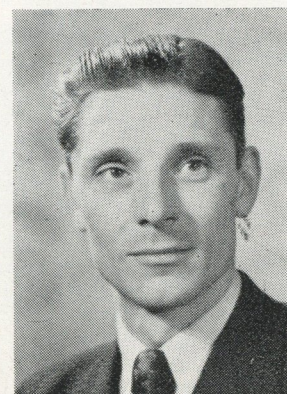
GEORGE STOBART

Joined Middlesborough 1939. Transferred to Newcastle in 1946 and from thence to Luton in 1949. Leading goal scorer last season. Holds the line together very well and is brilliant in possession.  
Position—Centre Forward.



WILLIAM CLARK DAVIE

Signed from St. Mirren for a big fee and Kiernan in part exchange. Has not missed a League match since joining us in early December 1950. A very fine schemer.  
Position—Inside Left.



ALBERT JAMES MITCHELL

Signed from Northampton Town in July 1951 in exchange for a big fee and Jimmy Wilson. Selected to play in F.A. representative side v. Cambridge University this season. Is a winger who knows the quickest way to goal.  
Position—Outside Left.



WALTER GEORGE SHANKS

Came to Luton on a month's trial, when it was seen that although his game is not on the classic lines he would develop into a strong player. Had settled down very nicely and was playing well in the first team when he received a serious injury at Hull in September. Is hoping to resume very soon.  
Position—Left Half.



Tel.: LUTON 2245/5433

# Cleveland Hotel

Prop.: G. O. PARTLETT

COMMERCIAL & RESIDENTIAL

Reasonable Terms

'Board Residence

Bed & Breakfast

★ CARDIFF ROAD, LUTON ★



*You will always find a good selection of first class residential property for sale at Luton's Leading Estate Agents*

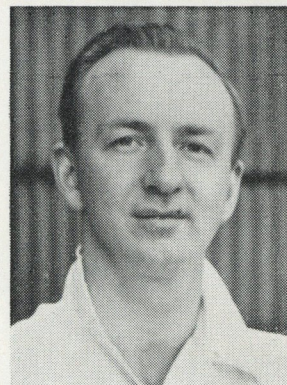
SURVEYORS, VALUERS  
AND AUCTIONEERS

**Douglas Stratford & Co.**

TELEPHONE LUTON 2953-4

31, KING STREET, LUTON

## LUTON TOWN FOOTBALL CLUB.



**LESLIE FREDERICK HALL**

Born St. Albans and played with the local Club before joining Luton as a professional in 1943. Our only part-time player. A very strong defender.

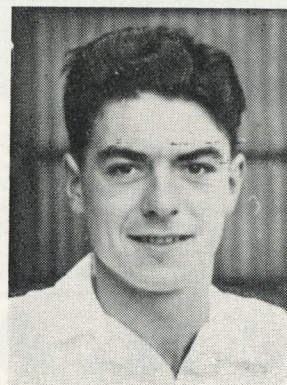
Position—Centre Half.



**JAMES THOMAS PEMBERTON**

Came to Luton from Stourbridge in November 1947. Is a useful utility man. Has already appeared in every position in Reserve team except Goalkeeper.

Position—Full Back or Half Back.



**GORDON REGINALD TURNER**

Born Hull. Signed for Luton upon his demobilisation from the Navy in March 1950. Very clever in bringing the ball through when playing at wing half. Equally effective at Inside forward.

Position—Wing Half or Inside Forward.



**SEAMUS DUNNE**

Born Wicklow, Eire. Secured from Shelbourne in May 1950. Previously played for Drogheda United and whilst with them gained six Eire Youth International caps. A very strong defender and is rapidly gaining experience of the English type of football.

Position—Full Back.



# LUTON TOWN FOOTBALL CLUB - Season 1951/52



Top Centre — Charles Jeyes, Esq., C.A. (President and Chairman)

Back Row (left to right) — R. Hann (Trainer), J. W. Arnison (Ass. Trainer), R. J. Wyldes, K. K. Hawkes, R. H. Morton, J. Groves, R. A. Davies, T. Wheeler, A. A. Taylor, W. S. Havenga, T. Kelly (Coach), T. S. Mackey (Ass. Trainer).

Middle Row (left to right) — D. Duncan (Manager), W. H. Cooke, W. G. Shanks, R. S. Smith, J. T. Pemberton, E. W. Stibbards, G. R. Turner, L. F. Hall, S. Dunne, B. R. Streten, W. C. Davie, B. J. Moore, L. C. Jones, D. J. Sexton, P. Coley (Secretary).

Front Row (left to right) — H. S. Hewson (Director), J. E. Taylor, P. W. Wright (Director), T. Aherne, P. G. Mitchell (Director), S. W. Owen (Captain), E. Hugh Woods (Director), G. C. Stobbart, A. F. England (Director), C. Watkins, H. Richardson (Director).



## G. A. WILD & SONS



14, MANCHESTER STREET, LUTON.

'Phone : 780

Sports Goods Suppliers to Luton Town F.C.  
Main Agents for all Leading Makers.



103, HIGH STREET NORTH, DUNSTABLE.

'Phone : 275

Large Stocks of Equipment for every type of  
Outdoor and Indoor Games.





LET HARRY WELCOME YOU AT THE

# "PANAMA"

WALLER STREET, LUTON



EXCLUSIVE TO THIS HOUSE

**FESTIVAL ALE**

***Barclays No.1***

I, 2 OR X A

**DR. BROWN**

You CANNOT Beat

Russian **IMPERIAL** Stout

**VICTORY STOUT**

A FULL STOCK OF  
WINES AND SPIRITS

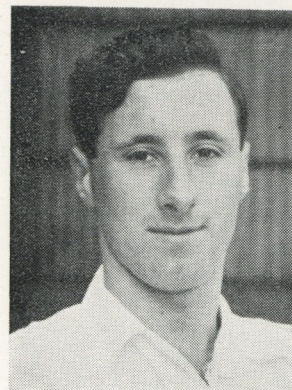


ALL DRAUGHT BEERS KEPT  
IN IDEAL CONDITION IN  
IN A COOLED CELLAR

REMEMBER THE ONLY  
**BARCLAY'S HOUSE**

IN TOWN

## LUTON TOWN FOOTBALL CLUB.



**ROBERT JOHN WYLDDES**

Born Southport. Joined Luton from  
Desborough in 1949 after only one  
season with them.

Position—Outside Left.



**JOHN GROVES**

Signed professional forms a month  
after his 18th birthday and is our  
youngest member. Is the son of former  
Derby County Inside Forward, Arthur  
Groves. A big future is expected of  
this boy.

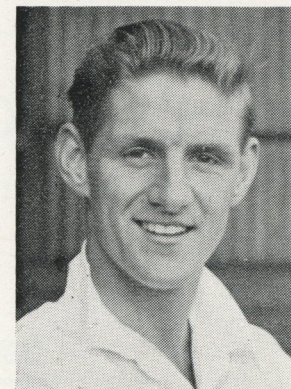
Position—Inside Forward.



**WILLIAM STEVEN HAVENGA**

A South African transferred to  
Luton from Birmingham City in the  
summer of 1950 for a four figure fee.  
Scored hat trick against Sawansea Town  
on Boxing Day 1950 from the Outside  
Left position.

Position—Outside Left or Right.



**RAYMOND SCORER SMITH**

Born Quarrington Hill, Durham. In  
his third season with Luton being signed  
from Evenwood Town in February 1950.  
Very strong in the tackle and a whole  
ninety minutes player.

Position—Left Half.



WE

always go to

**Buttons**

for our

**CLOTHES**

LUTON 356

HARPENDEN 60

## Join the **Bobbers Stand Club**

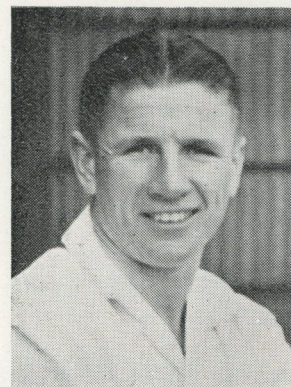
APPLICATION FORMS AVAILABLE  
from the

HON. SECRETARY  
**LUTON BOBBERS STAND CLUB**  
**BEECH HILL PATH :: LUTON**

Telephone: LUTON 2566

MEMBERSHIP FEE **1/2** MEMBERSHIP FEE  
per year

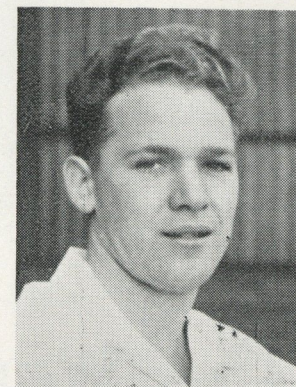
### LUTON TOWN FOOTBALL CLUB.



**BERNARD JOSEPH MOORE**

With Brighton and Hove from 1945/49 before joining Hastings United. Transferred to Luton in January 1951. Has a powerful shot and will score many goals.

Position—Centre Forward.



**ARTHUR ALEXANDER TAYLOR**

Born Lambeg, N. Ireland. Discovered playing for Glentoran, Irish League side, and joined Luton in 1950. Not very robust but a very clever ball player.

Position—Inside Forward.



**LESLIE CLIFFORD JONES**

Born Mountain Ash, Glam. Started his football career with Craig Athletic—Luton League Junior side. Signed professional forms on 4th October 1950 only three weeks after signing amateur forms for us. Played in first team end of 1950/51 season at right back.

Position—Full Back or Half Back.



**ERIC WILLIAM STIBBARDS**

Born Edmonton. Turned professional after showing promise in Mid Week League matches. Previously with Hawker Athletic.

Position—Goalkeeper.



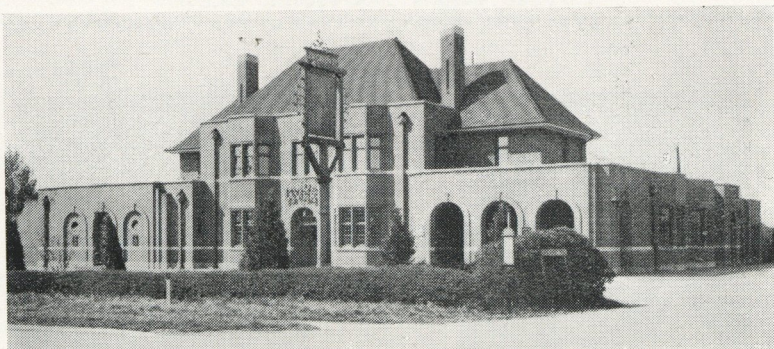


Photo by F. G. Clements, A.R.P.S., Luton.

# The Warden Tavern

*Proprietor : Tom Hodgson— Ex-Captain Luton Town F.C.*

BARTON ROAD, LUTON.

Telephone : ICKNIELD 277

SPECIALISING IN

LUNCHEONS

ALSO

WEDDING RECEPTIONS

SOCIAL FUNCTIONS

AND

EVENING PARTIES

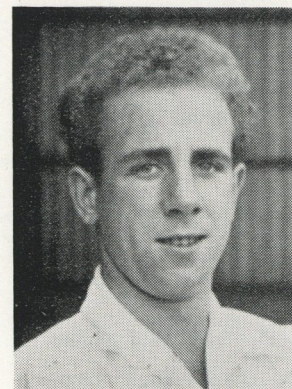
(WINTER MONTHS ONLY)

- ★ Overlooking the Warden Hills and 3 minutes walk to South Beds. Golf Course, with Dining Room seating 100 looking on to attractive garden. Buses to Bedford stop at door.

PATRONISED BY LEADING FOOTBALL TEAMS

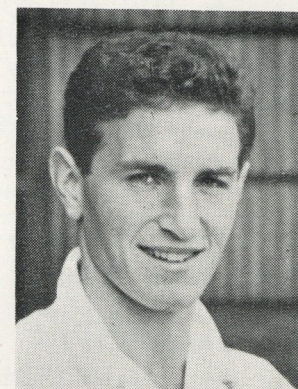
FULLY LICENSED with LARGE CAR PARK

## LUTON TOWN FOOTBALL CLUB.



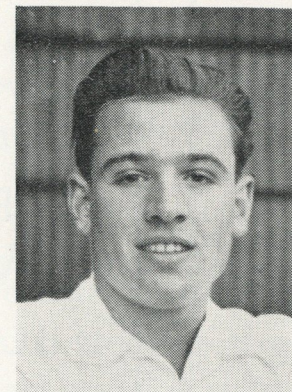
TERENCE ANTHONY WHEELER

Turned professional in October 1950 after making several successful appearances in Mid Week League side. Previously played for Leatherhead. Position—Wing half or Full Back.



DAVID JAMES SEXTON

Born Islington and signed for Luton in June 1951 from Chelmsford in exchange for a four figure fee. Has a powerful shot. Position—Inside Forward.



KENNETH KILBY HAWKES

One of our most recent acquisitions, being signed on October 30th from Shotton Colliery after strong recommendations by our North Eastern Scout. Is only 18 years of age. Quickly brings the ball under control and is always trying to use it. Position—Full Back.



# HOME SUPPLIES

★ FOR ALL GOVERNMENT SURPLUS ★

— IT'S GOOD —

96a, WELLINGTON STREET, LUTON.

ADELAIDE STREET  
CORNER

TELEPHONE : 1108

ADELAIDE STREET  
CORNER

Before & After the Match visit :—

## DIANE RESTAURANT

74, DUNSTABLE ROAD, LUTON.

(OPP. ODEON)

BREAKFASTS, LUNCHES, TEAS & SUPPERS

OPEN 9 a.m. — 11 p.m. SUNDAYS 3 p.m. — 11 p.m.

PRIVATE PARTIES CATERED FOR

'Phone : 1893

RETAIL DAIRYMAN

## B. Mooring

Tuberculin Tested Milk

VICTORIA DAIRY  
UNION STREET, DUNSTABLE

PURE MILK

Cleanliness Service Quality

Private address :  
LORD'S HILL COTTAGE  
near DUNSTABLE

Telephone : Hockliffe 304

★

ALL PHOTOGRAPHS

SUPPLIED BY

GERALD C.  
WREN

12, LEAGRAVE RD.,  
LUTON.

UNLESS OTHERWISE  
STATED.

★

## LUTON TOWN FOOTBALL CLUB.

### TERENCE WILLIAM J. KELLY

A local boy at present on National Service in the R.A.F. Is the son of Tim Kelly the Luton Coach. Joined Luton from Vauxhall Motors in 1950.  
Position—Half Back.

### MICHAEL JOSEPH CULLEN

Born Glasgow. Signed by Luton from Scottish Junior Club, Douglasdale in August 1949. At present in the R.A.F. Holds the ball very tight when in possession.  
Position—Outside Right.


### ALAN THOMPSON

A local boy who played for West Park in Luton Youth League before signing professional in 1949. Is due for demobilisation from H.M. Forces early January.  
Position—Full Back.

### DEREK WILLIAMS

Born Wrexham. Our second goalkeeper to be signed from Llanrudno F.C. within a year. Iorwerth Hughes was our first capture. Is at present in the R.A.F.  
Position—Goalkeeper.

## OGDEN & CLEAVER LTD.

MONO  BRAND  
REGD.

Manufacturers of :—

"STUART" HARD GLOSS PAINT  
"STUART" WATER PAINT  
"DENVER" FLAT WALL PAINT  
"MONOKYD" DECORATIVE FINISH  
and other  
HIGH CLASS DECORATING MATERIALS

"STUART" SERIES PAPERHANGINGS

GLASS - Silvering - Leaded Lights - Motor Screens - Embossing, etc.

Technical and Advisory Service Available To :—

ARCHITECTS, CONTRACTORS, LOCAL AUTHORITIES, PUBLIC BODIES, ETC.

Office and Warehouse :

1, 3, 5 & 8 Stuart St., LUTON

Telephone No. : LUTON 746-7

Paint Factory :  
DUNSTABLE



FIRST GOAL OF THE SEASON!

A  
TELEVISION  
A  
RADIO  
OR  
RADIOGRAM  
Centre your purchases on  
**SCIENTIFIC RADIO  
SERVICE COMPANY**

46 JOHN STREET

66 WELLINGTON STREET

'Phone : LUTON 5014

Dealers for all the leading makes.

BURY PARK DAIRY,  
181/5 DUNSTABLE ROAD,  
LUTON

and at

312 BISCOT ROAD

Telephone : 516

**CARTWRIGHT'S DAIRIES**

YOGHOURT  
STERILISED  
PASTEURISED  
TUBERCULIN TESTED  
**MILK**

WHOLESALE & RETAIL DISTRIBUTORS.

**LUTON TOWN F.C. 1ST XI FIXTURES, 1951-52.**

**DIVISION II**

Date	Opponents	Ground	Goals For	Against
1951				
Aug. 18	Swansea Town	H (3—1)		
Aug. 20	Sheffield United	A (1—2)		
Aug. 25	Bury	A (1—4)		
Aug. 29	Sheffield United	H (0—0)		
Sept. 1	Leicester City	A (1—3)		
Sept. 5	Barnsley	A (1—6)		
Sept. 8	Notts County	H (1—1)		
Sept. 15	Queen's Park Rangers	A (1—1)		
Sept. 22	Blackburn Rovers	H (1—1)		
Sept. 29	Hull City	A (3—5)		
Cct. 6	Nottingham Forest	A (—)		
Oct. 13	Brentford	H (2—0)		
Oct. 20	Doncaster Rovers	A (2—5)		
Oct. 27	Everton	H (—)		
Nov. 3	Southampton	A (1—1)		
Nov. 10	Sheffield Wednesday	H (—)		
Nov. 17	Leeds United	A (1—2)		
Nov. 24	(1) Rotherham United	H (—)		
Dec. 1	Cardiff City	A (1—2)		
Dec. 8	Birmingham City	H (1—1)		
Dec. 15	(2) Swansea Town	A (2—0)		
Dec. 22	Bury	H (4—2)		
Dec. 25	West Ham	A (1—2)		
Dec. 26	West Ham	H (1—1)		
Dec. 29	Leicester City	H (0—2)		
1952				
Jan. 5	Notts County	A (2—2)		
Jan. 12	F.A. Cup, 3rd Round			
Jan. 19	Queen's Park Rangers	H (2—0)		
Jan. 26	Blackburn Rovers	A (0—1)		
Feb. 2	F.A. Cup, 4th Round			
Feb. 9	Hull City	H (1—2)		
Feb. 16	Nottingham Forest	H (—)		
Feb. 23	F.A. Cup, 5th Round			
Mar. 1	Brentford	A (0—1)		
Mar. 8	(6) Doncaster Rovers	H (3—1)		
Mar. 15	Everton	A (—)		
Mar. 22	Southampton	H (0—1)		
Mar. 29	Sheffield Wednesday	A (—)		
Apl. 5	Leeds United	H (2—3)		
Apl. 12	Rotherham United	A (—)		
Apl. 14	Coventry City	H (1—1)		
Apl. 15	Coventry City	A (1—4)		
Apl. 19	Cardiff City	H (1—1)		
Apl. 26	Birmingham City	A (0—3)		
May 3	Barnsley	H (1—1)		

The figures in parentheses are results of corresponding matches last season. Everton and Sheffield Wednesday take the places of Preston North End and Manchester City, promoted to Division I, and Nottingham Forest and Rotherham United replace Chesterfield and Grimsby Town, relegated to Division III.



★ *Meet your Friends before and after the match at*

## KINGSFARE RESTAURANT

FOR

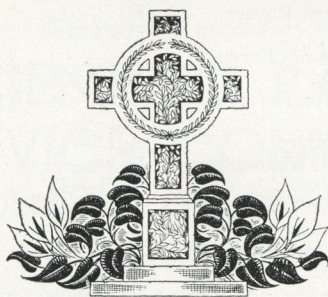
- ★ MORNING COFFEE
- ★ LUNCHEONS
- ★ TEAS

Parties Catered For ★  
Open All Day Wednesday ★  
'PHONE 3826 ★

8, KINGS STREET, LUTON.

Memorials

of Beauty



# Geere & Co.

Sculptors and Masons.

*Memorials erected throughout the County  
Stonework of every description created  
by the hand of the Craftsman*

233 DUNSTABLE ROAD, LUTON  
Telephone: Luton 313

29 CAULDWELL ROAD, BEDFORD

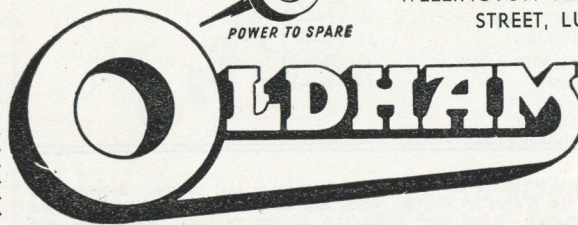
'Phone : LUTON 3821

BATTERY REPAIRS  
BATTERY REPLACEMENTS



## S.B.S. (LUTON) LTD.

WELLINGTON PLACE, WELLINGTON  
STREET, LUTON, BEDS.



## BATTERIES

For Motor Car—Radio  
Torch Cells

Trade Enquiries Invited

## LUTON TOWN F.C. 2ND XI FIXTURES, 1951-52

### FOOTBALL COMBINATION

Date	Opponents	Ground	Goals	
			For	Against
1951				
Aug. 18	Tottenham Hotspur	Away		
Aug. 22	West Ham	Home		
Aug. 25	Portsmouth	Home		
Aug. 30	West Ham	Away		
Sept. 1	Ipswich Town	Home		
Sept. 5	Bristol City	Home		
Sept. 8	Arsenal	Away		
Sept. 15	Brighton	Home		
Sept. 19	Brighton	Away		
Sept. 22	Bournemouth	Away		
Sept. 26	Swindon Town	Away		
Sept. 29	Arsenal	Home		
Oct. 3	Swindon Town	Home		
Oct. 6	Southampton	Home		
Oct. 13				
Oct. 20	Watford	Home		
Oct. 27	Plymouth Argyle	Away		
Nov. 3	Bristol Rovers	Home		
Nov. 10	Southampton	Away		
Nov. 17	Norwich City	Home		
Nov. 24	Watford	Away		
Dec. 1	Plymouth Argyle	Home		
Dec. 8	Bristol Rovers	Away		
Dec. 15	Tottenham Hotspur	Home		
Dec. 22	Portsmouth	Away		
Dec. 25	Charlton Athletic	Away		
Dec. 26	Charlton Athletic	Home		
Dec. 29	Ipswich Town	Away		
1952				
Jan. 5	Norwich City	Away		
Jan. 12	Bournemouth	Home		
Jan. 19	Bristol City	Away		

### COMBINATION CUP

Jan. 26	Northampton Town	Home
Feb. 2	Northampton Town	Away
Feb. 9		
Feb. 16	Norwich City	Away
Feb. 23	Ipswich Town	Away
Mar. 1	Watford	Home
Mar. 8	Birmingham City	Away
Mar. 15	Leicester City	Home
Mar. 22		
Mar. 29	Norwich City	Home
Apl. 5	Watford	Away
Apl. 11	Coventry City	Home
Apl. 12	Birmingham City	Home
Apl. 14	Coventry City	Away
Apl. 19	Leicester City	Away
Apl. 26	Ipswich Town	Home



**STOP**

AT THE

★ **BUTE MILK BAR** ★

*for Morning Coffee, Luncheons, Teas, Hot & Cold Snacks, etc.*

**BUTE STREET, LUTON.**

'Phone: 622.

*and MEET YOUR FRIENDS THERE.*

**Williams & Richardson**

**ELECTRICAL,**

**RADIO & TELEVISION**

**ENGINEERS**

★ ★ ★

**174 BISCOT ROAD, LUTON**

'Phone : Luton 593

*Be Smart — Be Well Groomed — — By Luton's Leading Outfitters*

**JOHN FIELDING & CO.**

**40, CHAPEL STREET, LUTON**

Tel. : 4547

**LADIES — GENTS — CHILDRENS WEAR**

*Call in and inspect our large stocks without obligation*

*Made to Measure garments a speciality. Made in our own workrooms in Luton.*

**CASH OR EASY TERMS**

**METROPOLITAN LEAGUE**

**LUTON TOWN "A"**

Date		Opponents	Ground	Goals	
				For	Against
1951					
Aug. 18		Mitcham Rovers	Away		
Aug. 25		Dunstable Town	Away		
Sept. 1		Headington	Home		
Sept. 8		Horsham	Away		
Sept. 22		Tottenham "A"	Away		
Sept. 29		Twickenham	Away		
Oct. 17		(Wed) Brighton & Hove "A"	Home		
Oct. 27		Skyways	Home		
Nov. 10		Vickers-Armstrong	Home		
Nov. 24		Tonbridge	Away		
Dec. 1		Windsor and Eton	Away		
Dec. 8		Hastings (League Cup, Round 1)	Home		
Dec. 15		Callenders Athletic	Away		
Dec. 22		Tonbridge	Home		
1952					
Jan. 5		Tottenham "A"	Home		
Jan. 12		League Cup (Round 2)			
Jan. 19		Headington	Away		
Jan. 26		Twickenham	Home		
Feb. 2		Dunstable Town	Home		
Feb. 9		Skyways	Away		
Feb. 23		Hastings	Home		
Mar. 1		Mitcham Rovers	Home		
Mar. 12		(Wed) Brighton & Hove "A"	Away		
Mar. 15		Vickers-Armstrong	Away		
Apl. 12		Windsor and Eton	Home		
Apl. 14		(Monday) Horsham	Home		
Apl. 19		Callenders Athletic	Home		
Apl. 26		Hastings	Away		

*All Photographs supplied by*

**GERALD C. WREN, 12, LEAGRAVE ROAD, LUTON**

*Unless otherwise stated.*

★ **The Cafe** ★

*A good variety of*

**COOKED MEALS & SNACKS**

*at moderate charges*

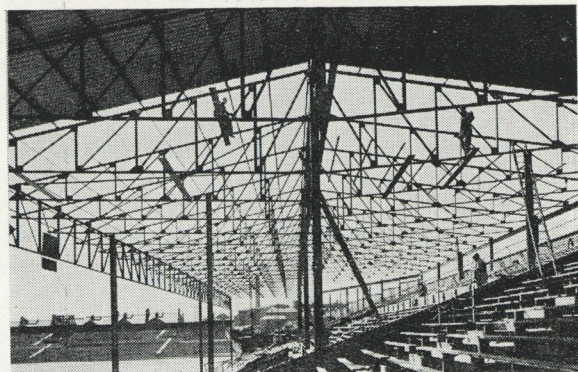
Open Monday to Friday 9 a.m. to 5.30 p.m. Saturday 9 a.m. to 10 p.m. Sunday 5.30 to 10 p.m.

★

**34 CHAPEL STREET - - - LUTON**



The Re-Roofing of the Luton Town Football Club Grandstand 1949



Steelwork carried out to the instruction of  
**GIBBS DANDY LTD.,**

34, GEORGE STREET, LUTON.

'Phone : 4110.

**THE BENDIX Self Service Launderette**

9, KING STREET, LUTON.

(next to Jay's Furnishing Stores)

★ The latest washday labour saving machinery is at your service at the above address.

NO WET HANDS — NO SOAP TO BUY — NO WASHDAY BACKACHE  
 NO DRYING PROBLEMS

**9 LB. LOAD FOR 2/6d.**

Wash completed in half an hour while you sit comfortably in the Launderette or do your shopping.

*Secretaries of local football and sports clubs especially invited.*

Open : Monday, Tuesday — 8.30 a.m. to 8 p.m.

Wednesday, Friday, Saturday — 8.30 a.m. to 6 p.m.

Thursday — 8.30 a.m. to 1 p.m.

**LAUNDERETTE (LUTON) LTD.**

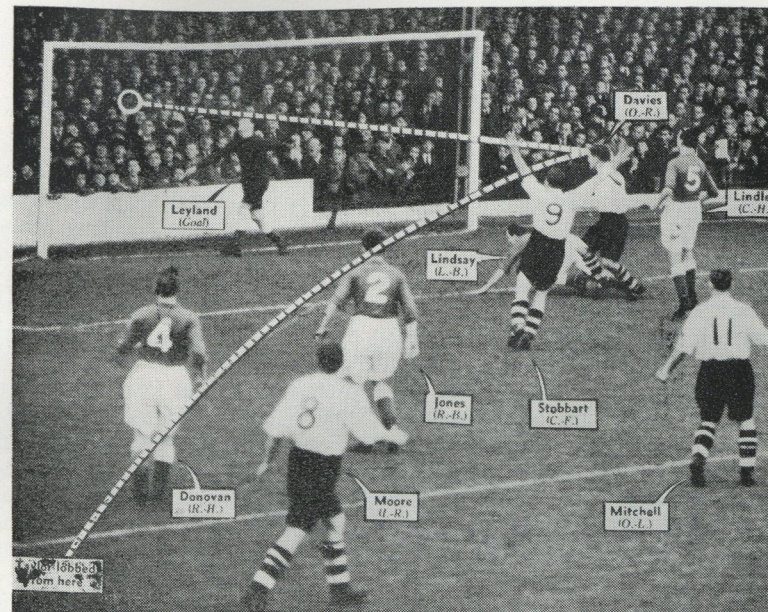


Photo by Graphic Photo Union, London W.C.I.

Roy Davies scoring goal against Everton at Kenilworth Road on Saturday, 27th October, 1951.

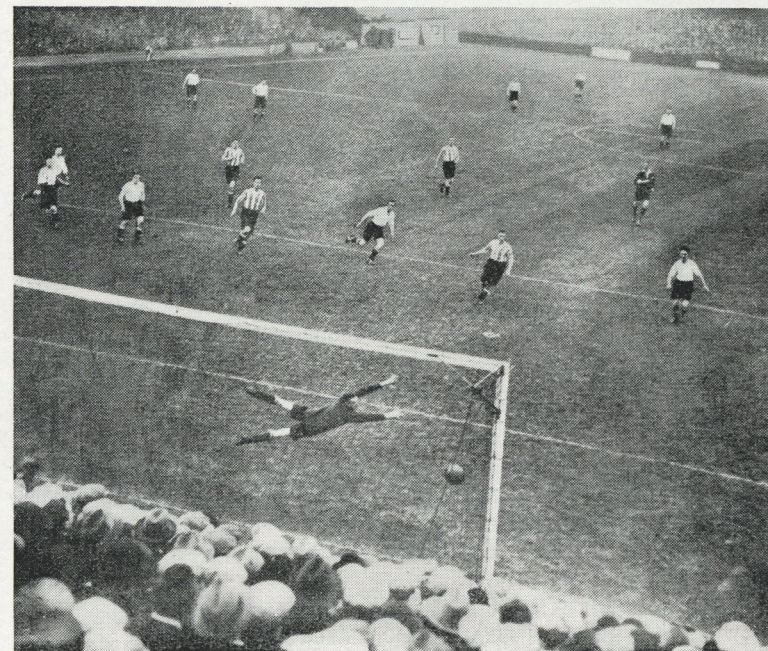


Photo by Luton News

Andy Rennie scoring one of his "specials" with a left foot drive at Kenilworth Road against Coventry City (about 1930)



President - PHILIP W. WRIGHT, Esq.  
 Hon. Treasurer - Mr. J. COLLIER.  
 Hon. Secretary - Mr. A. C. WRIGHT.  
 Committee - Messrs. V. BROWN, P. BIRKETT,  
 N. LINES, G. ROWE, R. ROGERS,  
 L. S. SETCHELL.

**The Luton Bobbers Stand Club,  
 Beech Hill Path,  
 Luton.**

Telephone : LUTON 2566.

In 1933 a group of men interested in the amenities available to the Luton Town supporter gathered together to try and devise ways and means of improving on the covered accommodation. A Committee was formed under our President, Mr. Philip W. Wright who was and still is a Director of the Luton Town Football Club. Several schemes were planned and it was not long before we saw the wooden terraced steps facing the Grand Stand being taken away to be replaced by concrete steps the whole length of the field and covered with a roof, to be known as the "Bobbers Stand." The next scheme was for suitable Club premises. It was felt that an ideal central spot would be in the vicinity of the Football Ground itself and it was found there was room under the Bobbers Stand but that a lot of hard work would be required to clear all the soil, etc. away. The idea seemed a good one, and it was soon being put into operation. Hundreds of loads of soil had to be dug out and carted away but gradually the idea took concrete shape and on the 5th July 1935 our Club premises were opened by Mr. Philip W. Wright. Our Club Room runs practically the length of the playing pitch, divided into a Card Room, fitted with 28 tables, which we let for Whist Drives at a reasonable fee, and two fully licensed bars which are open seven days a week.

Still not satisfied we next put into operation a scheme for providing cover behind the Oak Road goal, so linking cover between the Grand Stand and the Bobbers Stand. This was carried out and the wooden steps replaced by concrete. The next project we have in mind is to provide cover for the Terraces, but unfortunately cannot get the necessary permission from the authorities to do so. But it will be done as soon as the present shortage of materials has been adjusted. In addition to all this we have provided 12 large Tea Bars in various parts of the Ground where Refreshments at reasonable prices can be obtained at all matches. All this activity has cost close on £20,000 and in addition we have handed over to the Football Club various amounts totalling £8,500. It will therefore be seen that a lot of hard work has been put in behind the scenes to enable all this work to be carried out and our thanks are due to everybody who has made some contribution, large or small, towards this achievement.

We still have a lot more we would like to see carried out and are working all the time to that end. More members are wanted and we hope many of you reading about our efforts will feel inclined to join. To become a member just send cheque or Postal Order value 1/2d. to our Hon. Treasurer, Mr. J. Collier, at the above address, which is the yearly subscription, but anyone wishing to become a Life Member the fee is 21/-. The more members we have the better can we work.

Published and Supplied by

**COOKS PUBLICITY SERVICE, LTD.**

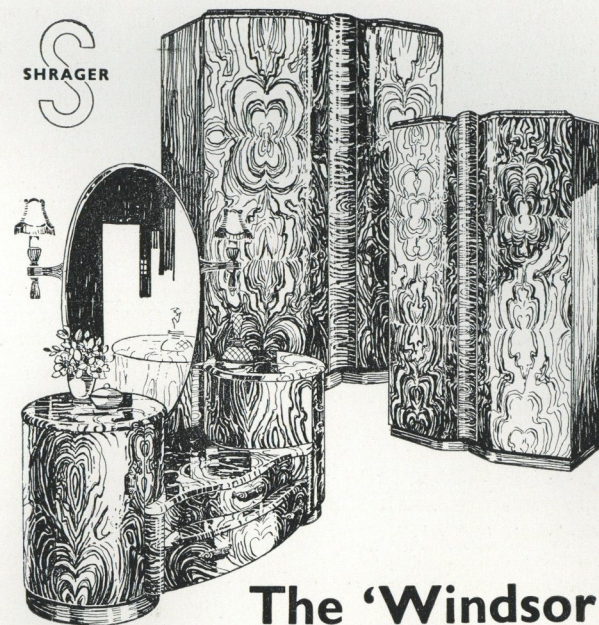
9, CLIFTON ROAD, MAIDA VALE, LONDON, W.9.

FOR THE LUTON TOWN FOOTBALL CLUB LTD.

# John Edwards Stores LTD.

**DISTINCTIVE FURNISHERS**

**Masterpiece furniture**



**The 'Windsor'**



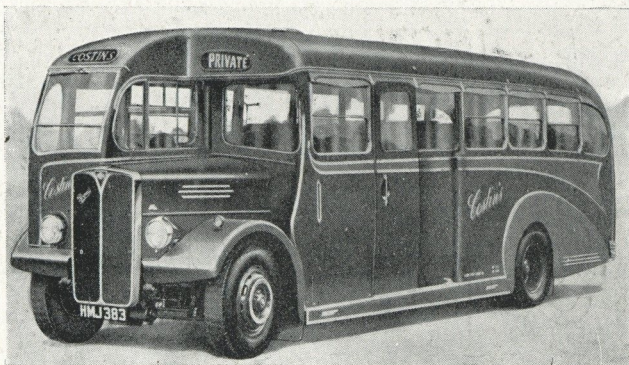
**25 WELLINGTON STREET  
 LUTON**

**PHONE : 5145**



★ *For YOUR Next Outing Consult*

# **COSTIN'S COACHES**



ONE OF THE "COSTIN" FLEET OF LUXURIOUS COACHES.



20 to 35 Seater coaches available for Private Hire on all occasions including :—

- ★ FOOTBALL MATCHES
- ★ SEASIDE RESORTS
- ★ SCHOOL TREATS
- ★ THEATRE PARTIES

ENQUIRIES INVITED

ESTIMATES FREE



**G. E. COSTIN, LTD.,**  
67, WEST STREET, DUNSTABLE.

TELEPHONE 30