



# LUTON TOWN

LUTON  
international  
AIRPORT  
*Close to you*

## FOOTBALL CLUB



OFFICIAL HANDBOOK 1990-1991 £2.50



STRIKING PERFORMER,  
WORKS HARD, PLAYS WELL.



**VAUXHALL** *Once driven, forever smitten*



VAUXHALL IS BACKED BY THE WORLDWIDE RESOURCES OF GENERAL MOTORS. CAR SHOWN ASTRA GTE.



**LUTON TOWN**

LUTON  
INTERNATIONAL  
AIRPORT

**1990-1991**

President	E. S. Pearson
Chairman	Peter Nelkin
Deputy chairman	Roger Smith
Directors	C. J. Hudson D. A. Kohler H. Richardson D. G. Watson-Challis
General Manager-Secretary	Bill Tomlins
Team Manager	Jim Ryan
Commercial Manager	Wendy Grzybowska
Financial Controller	Anne Marchini
Assistant Secretary	John Smylie
Coaches	John Faulkner, John Moore, George Ley
Physiotherapist	Dave Galley
Medical Officer	Dr Bill Berry
Chief Scout	Ron Howard
Youth Development	Paul Lowe
Ticket Office	Cherry Newbery
Club Shop	Bev Tyler
Promotions and Lotteries	John Gornall
Catering and Banquets	Peter Saul
Programme and Publications	Timothy Collings

Kenilworth Road Stadium, 1 Maple Road, Luton, Beds. LU4 8AW  
Tel: 0582 411622 Fax: 0582 405070 Office hours: 8.30am - 6pm  
Soccerline: 0839 664466 (38p per minute peak, 25p off peak)

**LUTON TOWN FOOTBALL CLUB**





## LUTON TOWN HANDBOOK 1990-91

### Honours

#### Football League:

1936-7	Div 3 (South) Champions
1954-5	Div 2 Runners-Up
1967-8	Div 4 Champions
1969-70	Div 3 Runners-Up
1973-4	Div 2 Runners-Up
1981-2	Div 2 Champions

#### F.A. Cup

1958-9 Finalists

#### Football League Cup

1987-8 Winners

1988-9 Finalists

#### Simod Cup

1987-8 Finalists

### Facts and Figures

Record victory: 12-0 v Bristol Rovers, Football League Division Three (South), April 13, 1936.

Record attendance: 30,069 v Blackpool, FA Cup 6th round replay, March 4, 1959.

Most appearances: Bob Morton (1948-64) - 550.

Most Football League appearances: Morton - 495.

Most goals: Gordon Turner (1949-64) - 265.

Most Football League goals: Turner - 243.

Most goals in a season: Joe Payne (1936-37) - 58.

Most Football League goals in a season: Payne (1936-37) - 55.

Highest scoring League season: 1936-37 (Division Three (South)) - 103.

Highest total of League points (two per win): 1967-68 (Division Four) - 66.

Highest total of League points (three per win): 1981-82 (Division Two) - 88.

Highest League finish: 1986-87 - seventh in Division One.

Most capped player: Mal Donaghy (N. Ireland) (58).

Record Transfer paid: £650,000 to Odense (Denmark) Lars Elstrup - Aug 89.

Record Transfer received: £1,000,000 from Q.P.R. Roy Wegerle - Dec 89.

### Managers:

George Thomson 1925-27  
John McCartney 1927-29  
George Kay 1929-31  
Harold Wightman 1931-35  
Edwin Liddell 1935-38  
Neil McBain 1938-39  
George Martin 1939-47

Dally Duncan 1947-58  
Syd Owen 1959-60  
Sam Bartram 1960-62  
Jack Crompton 1962  
Bill Harvey 1962-64  
George Martin 1964-66  
Allan Brown 1966-68

Alec Stock 1968-72  
Harry Haslam 1972-78  
David Pleat 1978-86  
John Moore 1986-87  
Ray Harford 1987-90  
Jim Ryan 1990-

**LUTON TOWN FOOTBALL CLUB**



## 1990-1991

### CONTENTS

Officials	1	Players All time	
Honours, Facts & Figures	2	Appearances	48 & 49
Contents, Credits	3	Review of the season	50 & 51
Board of Directors	4	League Results 89-90	52 & 53
Foreword from the Chairman	5	League Appearances 89-90	54 & 55
Report from the General Manager	7	Final Barclays League Tables	56 & 57
The Commercial Manager's Report	9	Football Combination League Table & Appearances	58
Supporters' Guide—		South East Counties League Tables & Appearances	59
Ticket Information	11, 12 & 13	Barclays Junior Hatters Club	61
Luton Town Supporters Club	15	A Brief History of LTFC	62
Team Manager's Report	17 & 18	Player of The Year Awards	63
The Men in Charge	19 & 20	All time League Record	64 & 65
Farewells	21	South East Counties Fixtures	66
Youth Training & Development	22 & 23	Football Combination Fixtures	67
Our Playing Staff	24-32	1st Team Fixtures	68
Colour Photographs	33-36		
Our Playing Staff (cont'd)	37-47		

### OFFICIAL HANDBOOK 1990-1991

Compiled and edited by Timothy Collings/Robert Alexander Associates, Hitchin (Tel: 0462 452241 Fax: 0462 452286)

Statistics compiled by Roger Wash

Photography by Josh Levy/Apex Photography, Milton Keynes (Tel: 0908 221010)

Editorial assistance by Alan Adair

© Luton Town Football Club  
Designed typeset and printed by CBC Print, Luton (Tel: 0582 26688).

**LUTON TOWN FOOTBALL CLUB**







## Board of Directors



**Peter Nelkin**  
Chairman



**Roger Smith**  
Deputy Chairman



**John Hudson**



**David Kohler**



**Henry Richardson**



**Mike Watson-Challis**

**LUTON TOWN FOOTBALL CLUB**



**1990-1991**



## FOREWORD FROM THE CHAIRMAN

**By Peter Nelkin**



It gives me great pleasure to be writing this welcome to our official handbook as the chairman of Luton Town Football Club. Like everyone associated with our club, I am very much looking forward to the new season and the challenges ahead. As most of our supporters may already know, I took over as chairman in May of this year.

I must say I was not in the position of being a man in search of a club, but when the opportunity to buy control at Luton arose, it was one I and my family wanted to take on. We knew Luton Town was possibly the most controversial club in the country with its synthetic pitch and ban on away fans. Now, having had some time to look at the club and its operations, I have been able to identify four specific aims which I think embrace my immediate philosophy for Luton Town. These are: (1) to build a successful side capable of sustaining a challenge at the top level; (2) to put the club on a sound financial footing (it is my belief that it is only possible to have a successful side if the club is built on solid financial foundations); (3) to relocate the club to a stadium worthy of the club within the next four or five years; and (4) to foster and enhance the club's tradition and image as a true family club.

The last of the four aims above is the one which I think was most persuasive in my decision to take over at Luton Town. This club has always been known as a family club and I hope to see this as a central theme of the club's policies in the future. As a family man myself with two sons, aged 13 and 10, and a daughter, aged two, I know only too well how important family life and family entertainment is. For that reason, I expect my daughter to be a frequent visitor to our board room on match days though I must admit that, having persuaded one of my sons to transfer his loyalties from Highbury to Kenilworth Road, I have yet to be successful with the other. Having said that, I hope to be able to build up a close relationship with the Supporters' Club and also to build up the strength of the already-successful Junior Hatters Club which I would like to see having a closer relationship with the club.

In general terms, I do not see any dramatic changes at the club in the short-term and have great faith in the club staff. I certainly see the same team continuing into the future. Jim Ryan's achievements at the end of last season showed what an inspired job he is doing and has done since taking on the job of team manager. I feel I am building up a good working relationship with Jim and this has added to my confidence about the future of the club. I am in the club in my office three or four days a week and have every intention of continuing to be a "hands-on" chairman in the future.

On major issues of club policy, I personally would like to see a limited number of visitors re-introduced in a carefully controlled manner in the future, but would not contemplate this happening until seating has been introduced in the Kenilworth Road stand and the supporters could be safely segregated at the Oak Road end and until, of course, we had the full agreement and support of the police and the local safety committee.

**LUTON TOWN FOOTBALL CLUB**





**1990-1991**



*Dave Galley, Jim Ryan and John Faulkner getting that bubbly feeling*

**Robert Alexander**  
· ASSOCIATES ·

*wish Luton Town a successful season*

Media, publications and public relations consultants

· 106 Whitehill Road · Hitchin · Herts · SG4 9HS · Telephone: 0462 452241 · Fax: 0462 452286 ·

**LUTON TOWN FOOTBALL CLUB**



**1990-1991**

## REPORT FROM THE GENERAL MANAGER By Bill Tomlins



We have had a year of great changes at Kenilworth Road with four chairmen and three different team-managers. But now, with the establishment of a new board of directors, the club will have the stability which is always needed for success. I know the supporters have felt the ripples of all these changes—and most clearly Jim's success as team manager, and I am sure everyone will be pleased with the return to our coaching staff this season of John Moore. This gives us a continuity in having former players in key positions on the football side of the club and I am sure it will pay dividends in the future.

That is not to forget that we have had tremendous success in the cup competitions in the last three years, although, in the league, we have had to fight for our Division One survival. This survival was achieved through having a very large squad which helped us to play on and gather vital points in a season when 11 players had hernia operations in an extraordinary year of injuries. This large squad, however, has a down side and has needed to be reduced. To have 41 professionals is not only financially a strain, but it also means that there are going to be a dozen players who are not playing each Saturday. A reduction in the size of the squad has been of paramount importance.

In the last 18 months, there have been several things occupying the minds of everyone in football—the Taylor report, Football League AGM's and EGM's, where we were supporters of the 22-club First Division, and the World Cup finals. At Kenilworth Road, we have already put in place 90 per cent of the recommendations of the Taylor Report during the last four years, as I have reported before in our match day programme. At the end of last season, we believed—in the absence of any formal guidance from the Football League or the Home Office—that it would be necessary this season to begin the work towards making our stadium all-seated, as outlined in the Crystal Palace programme. However, after much behind-the-scenes activity during the close season, I was able to establish it was not a requirement of our local authority's safety committee to do this so quickly and so we shall not be introducing seating to the Kenilworth Stand this season. To have introduced the new seating would have cut our capacity and had an effect on certain attractive fixtures.

Now, we have an opportunity to take into account all our supporters views about the Oak Stand and Kenilworth Stand and also to consider the possibility of a 700-seater stand in the 'triangle' area again. This would help us on capacity if we go all-seated next year. Our Kenilworth Stand supporters will notice this season that, under the regulations, new barriers have been installed. These would have reduced the capacity and so to avoid that the catering units have been moved under K2 and K3 to increase the capacity by 500. The new capacity of the stadium is now 13,688.

During the close season and following the World Cup finals, several major changes were made to the rules of the game. These I will go into in more detail in the club programme. The most important one relates to the offside rule and allows players in line with the last defender to be on-side. This is sure to have a big bearing on the game this season.

Finally, in welcoming everyone to the new season, I would like to warmly welcome Vauxhall in particular and thank them for their continued sponsorship and backing of the club. Ever since we have been in the First Division, we have been proud to be sponsored by General Motors, with Bedford until this season on the club's shirts and Vauxhall now. GM is a major international company and Vauxhall is of course a major employer in our town and we are exceptionally proud to continue our association with them. Only two things really matter at our club, as I have said before, and they are the 90 minutes on the pitch each week and the people who come along and support the matches. Everything else bolts on to these and Vauxhall, as our main sponsors, are not only vital to the club but also appreciated for all they do.



**LUTON TOWN FOOTBALL CLUB**





1990-1991

# LUTON TOWN



## THE PERFECT CENTRE

Hospitality at sporting events is now firmly established as an important item in the marketing and entertainment budgets of companies ranging from the largest international corporations to the smallest individually-run businesses. Luton Town offers the perfect venue.

The commercial department at Luton Town has grown enormously over the last six years to keep pace with the growing demands of companies wishing to entertain their clients and guests at the Kenilworth Road Stadium. We provide unrivalled hospitality boxes with a close-up view of the First Division, excellent match day and midweek suite facilities and prime areas for company advertising.

We employ a dedicated and professional team on and off the pitch to ensure every event runs smoothly and successfully. This, combined with the unique atmosphere provided by a top football match, offers a business event which is second to none. A perfect day. A perfect night. The perfect match.

*For information on hospitality facilities, advertising, sponsorship, business, conference and exhibition facilities, banqueting or stadium hire, contact the Commercial Manager by calling 0582 411622. It is the best chance of achieving the perfect business goal.*



**LUTON TOWN FOOTBALL CLUB**



1990-1991

## The Commercial Manager's Report

By Wendy Grzybowska



Only those people who were temporarily out of touch with the real world last May could have missed out on the news that we had ensured another season of First Division football with that dramatic victory at Derby. It was another perfect example of football's great pulling power and our own in particular that we should command so many well-deserved headlines with that stirring display at the Baseball Ground.

Our support home and away was magnificent last season and, if the early-season atmosphere is anything to go by, looks like being even more fantastic this year—and that means support for the team and support for the club. As always, the commercial offices at the Kenilworth Road Stadium have been going flat-out all summer in readiness for 1990-91 with all systems go for what we hope will be a really exciting and successful season.

I have been busy with the contracts on all our prime advertising, our hospitality boxes, match sponsorships and the rest and it has been a pleasure to feel the after-glow feeding back to the club after last season's tremendous finale. The interest has been high and, for that reason, I would like to take this opportunity of outlining the facilities we have to offer to our many business and commercial supporters around the ground.

Our hospitality boxes offer the ideal combination of perfect viewing of the match, privacy, big match atmosphere and top-class wine and food in an intimate atmosphere. We have 26, all leased on a long-term basis, which provide seating for five or eight guests. Unobstructed touchline viewing is always guaranteed whatever the weather because the boxes all have unique double balconies—indoors and outdoors. And only the linesmen are closer to the action.

Each box has its own dining area, a glazed inner balcony and an open-fronted outer balcony and the executive suite complex is self-contained with its own entrance, attended parking, bar and catering. In addition to the boxes I have mentioned, we also have two boxes seating eight and 14 guests which can be reserved for individual matches—these offer an all-inclusive package tailored to the individual needs of the client.

Advertising is always another major area of interest at the club. We offer high-profile sites around the ground, on our electronic scoreboard and in the official match day programme, which has a seasonal readership of more than 200,000. All are the perfect advertising tools.

Sponsorship, like advertising, is another big attraction at the club for our many business and executive members. We know, too, that having a good facility is not enough. We believe that it is the little things which make the day and always offer everyone a warm and friendly welcome, pay personal attention and make sure every event is a success.

Our match day sponsorship packages are tailor-made to suit the needs of our guests and provide a unique opportunity to entertain up to 74 valued clients or customers. The players join our guests after the match, which is the high point of a day including a drinks reception, a tour of the club, a top-class luncheon, programmes, advertising and promotions. We also offer packages for match ball sponsorship.

The business, conference and exhibition facilities at the club are of course in full use on a match-day when we are at our busiest but it is not only on Saturdays (or Tuesdays for midweek matches) that these superb rooms are occupied. The Joe Payne lounge, Kenilworth Suite, Century Club, Boardroom, Brengreen Suite and Bedfordshire Suite are available and in use for business throughout the rest of the week as part of the Business, Conference and Exhibition Centre operated at the club.

All this helps create valuable business for Luton Town and our business community and keep the club and our friends in close contact. Many regular users of the club also make use of our superb catering and banqueting facilities too for everything from birthday parties and anniversary dinners to top business lunches and wedding breakfasts. They may, of course, be relaxing after a busy game of football themselves—because last, but certainly not least, we have available for hire the pitch and the stadium with its all-weather facilities and accommodation for 13,000 spectators.

**LUTON TOWN FOOTBALL CLUB**





## THE PERFECT TEAM



*Kingsley Black drives the new Calibra and sparkles in the fast lane on Luton Town's left wing. A perfect combination in a winning team. Vauxhall and Luton Town.*

**LUTON TOWN FOOTBALL CLUB**



## Supporters' Guide 1990-1991

By Cherry Newbery



### Match Tickets

All league match tickets go on sale two weeks before the match is to be played. They may be purchased by post, credit card booking or by personal application.

Tickets can be left for collection on match days at the Ticket Collection Point in Kenilworth Road or in Maple Road (behind Sports Shop).

Details regarding Cup matches will be announced in the local press and radio and also in the match day programme.

### Match Day Prices 1990-91 (League)

	Adults	Senior Citizens/Juniors
<b>Main Stand</b>		
Blocks A-E	£12	£6
F	£9	£4
G	£6	£4
<b>Main Stand Enclosure</b>		
Blocks C-G	£9	£4
B, H & J	£6	£4
<b>Oak Road Stand</b>		
Blocks A-G	£9	£4
Restricted view seats	£6	£4
<b>Kenilworth Stand</b>	£5.50	£3
<b>Ticket Office Opening Hours</b>	(subject to change)	
Monday to Friday	10.00 am to 4.00 pm	
Saturday (non match days)	9.00 am to 12 noon	
Saturdays (match days)	9.00 am to K.O.	

contd. pp 12 & 13

**LUTON TOWN FOOTBALL CLUB**





## 1990-1991

### Ticket Office

#### Season Ticket Prices for Season 1990-91

	Renewal Prices before 30.6.90	Price after 30.6.90
<b>Main Stand A-E</b>	£157	£173
S.C./Junior	£ 81	£100
<b>Main Stand F</b>		
Adults	£121	£135
S.C./Junior	£ 61	£ 69
<b>Main Stand Enclosure</b>		
Adults	£121	£135
S.C./Junior	£ 61	£ 69
Restricted View Blocks B,H & J	£ 90	£102
<b>Oak Road Stand</b>		
Adult	£121	£135
S.C./Junior	£ 61	£ 69
Restricted View	£ 90	£102
<b>Kenilworth Stand Standing</b>		
Adult	£ 82	£ 92
S.C./Junior	£45.50	£ 50

### Membership

Members will have received by mail their new membership cards free of charge during the close season. Please advise the ticket office in writing of any change of address.

New members will be required to pay a joining fee of £1. No cards will be issued less than 48 hours before a match.



## 1990-1991

### Guesting Policy

Members may purchase up to three guest tickets for each match providing the following rules are adhered to:—

- 1) Guests are defined as either personal friends or relatives known to the member.
- 2) The member must accompany their guest(s) to their point of entry at the ground.
- 3) It is not permitted to resell tickets.
- 4) Members are responsible for the behaviour of their guest(s) whilst in the stadium. Guests in breach of Ground Regulations could result in the member's membership card being withdrawn.
- 5) The club reserves the right to withdraw or amend the guesting facility for any match.

### Special Family Discount

#### OAK STAND ONLY

There will be a special family discount of 20% off season tickets and league match tickets purchased. To qualify, the minimum requirement will be at least two adults and one juvenile aged under 16, all of whom must be from the same family.

In the KENILWORTH STAND a special 50p ticket is offered to under 8 members who attend league matches accompanied by an adult, both the adult and junior ticket must be pre-purchased from the ticket office before the match.

Students in full time education can purchase tickets at the reduced rate by pre-purchasing their tickets from the ticket office, proof of full time education will be required.

### Credit Card Hotline

Members wishing to order match tickets using Visa or Access can do so by telephoning 0839 664466 twenty-four hours a day up to 72 hours before a match. Quote your Credit Card Number, Name, Address, Membership Card Number and ticket requirements and also whether you wish the tickets posted or held for collection.

We would also request that you leave a day-time telephone number. Credit card bookings made less than 72 hours before a match must be made in normal office hours by calling Luton 411622.





# 1990-1991



*Iain Dowie leading the attack*

**Into the COMPUTER Age**  
with **DBF Crosswinds Ltd**

- LISTING PAPER
- PRE-PRINTED CONTINUOUS FORMS
- SNAP APART SETS
- CONTINUOUS CHECKS
- COMPUTER RIBBONS
- MAGNETIC MEDIA
- MAILERS
- SELF-ADHESIVE LABELS
- REGISTER SETS
- ORIGINATOR FORMS
- WORD PROCESSING STATIONERY
- A COMPLETE DESIGN SERVICE
- GRAPHICS & TECHNICAL ILLUSTRATION INCLUDING LASER GRAPHICS AND DATA GRAPHICS
- PRINTED OFFICE STATIONERY LETTER HEADS, INVOICE SETS, STATEMENTS, ETC.

• FOR THE HOME MARKET WE SELL SINGLE BOXES ONLY IF REQUIRED.

• ALL TRADE HOUSES SUPPLIED

**SPECIAL RATES for CASH and CARRY**

**DBF Crosswinds Ltd**  
COMPUTER AND BUSINESS STATIONERY

MARTIN HOUSE, UNIT A, CRADOCK ROAD  
LUTON, BEDFORDSHIRE LU4 9UP  
TEL: (0582) 562010/562020 FAX: (0582) 562030

**LUTON TOWN FOOTBALL CLUB**



# 1990-1991

## LUTON TOWN SUPPORTERS CLUB

By Pam Gray



A new addition to a family is always a time for celebration and this was the case in the household of L.T.F.C. when in September 1988 the Luton Town Supporters Club was born. For many years supporters (the heart of any club), had complained that there had not been an active club to represent them, to the management of the club. The first committee was formed from volunteer supporters, who had attended an open meeting in 1987 chaired by former Chairman David Evans, M.P.

The committee and officials were appointed in 1988 with the stated aims of increasing support for L.T.F.C., developing satellite branches in the future and, most importantly, to bridge the gap which existed between the F.C. and the "fan on the terrace".

Although lacking a much needed clubroom at present we felt it imperative that supporters club members could meet socially on a regular basis and thus our "Speakers Evenings" were formed. Our guest speakers have ranged from L.T.F.C. employees such as former manager Ray Harford, the present boss Jimmy Ryan, coaches, players, scouts, and members of the media both national and local. As members will know our President is Nick Owen from ITV and Vice President is Brian Swain the "Voice of Luton Football". We will be continuing our evenings which have proved so popular in the past.

Other events during our short history have included two presentation evenings at the Coliseum nightclub at which trophies were presented to the supporters' Player of the Year, Players' Player and Young Player; a trip to Holiday on Ice at Wembley Arena; Junior Fun Day at Kenilworth Road at which all the football club playing staff participated; a tour round Wembley Stadium; a visit to Kenilworth Road to meet the players and watch them train; two quiz nights with teams captained by Town stars, this event being won by Graham Rodgers' team; two video nights—the highlight being Raddy Antic's goal at Maine Road; and an open forum at which members and committee discussed items of mutual interest.

Our regular publication "Hatters News" has been greeted with enthusiasm from supporters club members and it has provided a platform for their views to be aired to not only other members but to the officials of L.T.F.C.

Although the present committee is virtually unchanged since the birth of the supporters club we are a completely democratic organisation and all the committee offer themselves for re-election at our A.G.M., at which there is an opportunity for any Supporters Club member to stand for election. We took it as a massive vote of confidence that the committee was re-elected in full at the last A.G.M. in July 1990.

We do however encourage an active membership as we feel that this is the way forward and our hope for the coming season is considerable growth in our membership which, at present, is approaching 1000.

If you wish to join or contact the supporters club, you can reach us by ringing Kenilworth Road main switchboard and leaving your message, or write to us c/o L.T.F.C.

Last but not least we offer our thanks to the football club for its support and use of facilities; the local media, in particular Brian Swain of The Luton News and Ken Wilson of BBC Radio Bedfordshire, and most of all yourselves our loyal and hardworking membership. Without you all efforts would be in vain. So if you have not yet joined please consider that the football club approaches a period in which its future will be decided and an active supporters club will be of the essence if a new home is to be found for "The Hatters" in Luton.

**LUTON TOWN FOOTBALL CLUB**







1990-1991



LUTON TOWN FOOTBALL CLUB



1990-1991



## THE TEAM MANAGER'S REPORT

By Jim Ryan



In what was a fairly momentous season for me personally last year, both the first game and the last game, and the contrast they provided, stick in my mind. The season began with me in charge of the reserves. We played against Arsenal and both the result and way we played gave me as much satisfaction as on any other day during the season. Until the last day, of course, because then we went to Derby—and we all know what happened there that day. It was a satisfying end to the season for everyone involved.

Afterwards, I think it took two or three weeks to 'come down' and relax. I kept on smiling to myself. All the way home on the motorway from Derby, of course, I had been pinching myself.

I knew when I took the job that it was not going to be easy. In fact, I knew it was going to be very hard. But right from the start I decided on the way to go about it and made it clear to everyone that we would only concentrate on one match at a time. We were second bottom of the league and the next game was at Liverpool. We worked very hard for the Liverpool game and picked up a point, but as soon as it was over we started to concentrate on the next game. Thus we worked till the end of the season.

By concentrating on each game like this, we also made it clear we were not interested in thinking about anything else that was happening around us. Our position in the league was put out of our minds as much as possible as we worked single-mindedly on our own performances and planned for the next opposition. We stayed like this right through to the last game.

Sometimes, of course, it was difficult for the staff and the players to keep all the outside pressures away from us. We tried to do it by raising our concentration levels so that we were always prepared to work as hard as possible for as long as possible at each individual game. It was like this particularly for the Crystal Palace game at the end of the season.

Like the fans, I felt all the tension, but I knew it was a matter of concentrating on the next pass, the next cross and the next goal chance for us to score and achieve the win we needed. We never set targets ahead of the next match, but with that one ticking into the last minute, it was not easy. All the fans were concentrating hard for us too that day and the support was there right to the end.

The players showed the same application. And in the end the opportunity arose. We had a good movement and made a chance and scored a good goal with, I think, only about 12 seconds remaining. The background of it all, the importance of the match and so on, was in my head but I was never thinking of it. Not until afterwards, that is. Then, I suppose, I took a deep breath and realised what a close-run thing it had been.

I am sure the level of concentration we built up for that game was shared right around the team and the fans. We never gave up and in the end we created the opportunity, scored, and got the win we deserved. So then we went to Derby knowing we had to win our last game.

We, on the coaching staff, had noticed the players were by then feeling the tension, the stress and the nerves of the situation. That week we decided to make it a light-hearted week and try to put some fun into training. We played games and did

contd. page 18

LUTON TOWN FOOTBALL CLUB





# 1990-1991

some tactical work for Derby, but we didn't need to do any hard physical work because everyone was as fit as they could be. We did some silly relay races around the ground and had a good laugh.

About that time, I also got a sudden and powerful feeling that we were destined to stay up. To be honest, I had felt it growing in me even before the Palace game. I just had a strong almost uncanny feeling it would happen the way it did. I think I went on record saying so on the radio, but no-one took much notice. People said to me that Ron Atkinson and Brian Clough were friends and that would work against us. I thought all the time that of all the managers in the league there was one who would never accept any form of sub-standard performance, especially after winning the League Cup, and that was Brian Clough. And he proved me right.

During the game at Derby, there was a big cheer after Forest had gone in front and I knew then that they had scored. But I did not ask about the score again at half-time or any other time until near the end when we were winning 3-2 and I was told that Forest were 3-0 up with 10 minutes to go. Contrary to what you may think, it did not seem like the longest 10 minutes of my life because the ball was in Derby's half all the time and they looked a tired team. Thankfully, it was not end to end. If it had been I think I would have been out of the box and sick with nervous tension by then.

We celebrated afterwards with a few bottles of champagne in the dressing rooms and me pinching myself all the way home on the bus. We had a few drinks at the hotel and then I went home to my local.

Since, then, the ownership of the club has changed hands. I am glad about this because it had put to an end any worries about indecision and further changes in the boardroom. It may not have any great direct effect on my job, but it does help if we have a stable club with continuity. We are in the First Division and we are there to do well and try to win trophies, not just survive. Of course, with any club our size, there is always going to be an element of survival about each season, but it is my feeling that we should be ambitious to do a lot more than that.

No matter what the pressures are or will be this season, I want to try and manage the club and the team in the real sense of the word. I want to be ambitious and enjoy it. I am ambitious to field a team which can play well and provide good entertainment and win trophies playing the sort of football we all want to see at Luton. I think the change of ownership will help us towards this.

We have enough handicaps at a club our size already without needing any more so it is good to have a stable foundation in the boardroom as we go into a new season. Continuity, as I have said, is very important and it is with that in mind too that I have brought John Moore, one of my old playing colleagues here, back to the club again as reserves coach. I am sure I do not have to tell anyone what John's qualities are as he has proved himself to us all at Luton before.

All in all, as I write these notes, I feel quite happy with the people we have got together here at Luton. We have a group of people to whom the club means a lot more than a pay-cheque each week and I know this is something which has already been noticed by George Ley in the six months he has been with us.

I have made it clear to everyone the way I want to see the game played, what my philosophy is and how much we have to work to achieve our success. Part of the great attraction of working for a club like Luton Town is the pleasure to be had in tripping up the big clubs every once in a while and I know we all feel that together. The team understands that and also has a good feel for the history of the club. We have become a close-knit happy bunch sharing a philosophy and I feel reasonably confident we can be a competitive team and certainly improve on last year's performance.

## LUTON TOWN FOOTBALL CLUB



# 1990-1991

## The Men in Charge



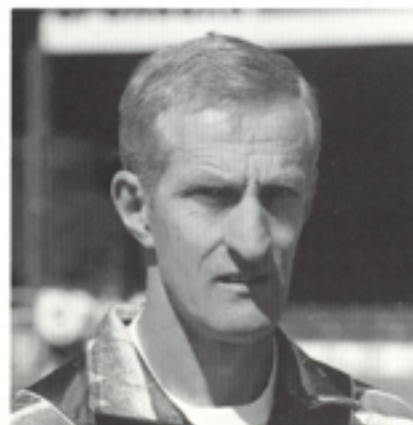
**Jim Ryan** *Team Manager*

Jim took over as manager at Kenilworth Road on January 11, 1990. Born in Stirling in May 1945, he left Scotland in 1962 for a trial at Manchester United where his wing-play earned him his first professional contract. He collected a European Cup winner's medal in 1968 when he was a substitute for the famous United victory over Benfica. He joined Luton Town in 1970 and helped them to promotion from the Second Division in 1974 when he was a creative mainspring and an expert penalty-taker. In 1976, he moved to the United States and played for Dallas Tornado and Wichita Wings. He gained the English F.A. Coaching Licence in 1982 and joined the Luton Town staff as a coach in 1986.



**John Faulkner** *Chief Coach*

A team-mate of Jim Ryan's in the 1974 promotion team at Luton Town, John took over the first team coaching job in January. Born in Orpington, in March, 1948. He made his name when he performed heroics at centre-half for Sutton United against Leeds. His performance secured him a move to join Don Revie's squad soon afterwards. A serious injury curtailed his career in Yorkshire, however, and he moved to Luton in 1972. He remained at the club until 1978 when he left to further his career in the United States. After gaining his Coaching Licence, he returned to Bedfordshire as a coach in youth football and he joined the Luton staff together with Jim Ryan in 1986.



**John Moore** *Reserves Coach*

A former Team Manager, John returned to join the coaching staff during the summer of 1990—25 years after his arrival in Luton as a player. Then, after signing from Motherwell, John was a forceful, robust left-half with a broad Scottish accent and total determination. Born in Harthill in December, 1943, John made 263 senior appearances for the Hatters between 1965 and 1974 and was a leading figure in the 1968 and 1970 promotion teams and a team-mate of Jim Ryan and John Faulkner in the early 1970's. When he left Luton, he played for Brighton and Northampton before launching his managerial career at Dunstable. He returned to Luton as youth coach in 1978 and was promoted to manager in 1986.

## LUTON TOWN FOOTBALL CLUB







## 1990-1991



### George Ley

#### Youth Coach

George is a former opponent of manager Jim Ryan from their playing days. Born in Exminster in April, 1946, George was a junior at Exeter and went on to play for Exeter, Portsmouth, Brighton and Gillingham between 1963 and 1975. When his English league career ended he moved to America for 10 years and played and coached for Dallas Tornado and several other junior clubs. He also coached women in America at this time. It was while he was in the United States that he came across Jim Ryan again and formed a friendship which led him to Kenilworth Road. George was appointed as youth team coach in January, 1990.



### Dave Galley

#### Physiotherapist

One of the youngest physios in the First Division, Dave succeeded Dave Kirby when he came to Luton in 1987 after previously working at Fulham and in private practice. Dave is a keen sportsman and enjoys a game of football himself when he is not nursing and repairing the injuries of our senior players.



### Ron Howard

#### Chief Scout

Ron joined the staff at Kenilworth Road in 1984 after previous service with Queen's Park Rangers and Cambridge United. He has a network of scouts and contacts throughout Britain and Europe and often flies off on scouting missions for weekend matches in far-flung places as well as the routine of covering English league soccer on Saturdays. Ron began his scouting career with QPR in 1960 and was Chief Scout at Loftus Road from 1972 until 1978 when he joined Cambridge. He was Chief Scout there until 1984.



### Paul Lowe

#### Youth Development Officer

Paul joined the Kenilworth Road staff 12 months ago after three years part-time coaching at the Luton Town Centres of Excellence. Paul was in charge of the Milton Keynes centre. He worked previously as a teacher at the Cardinal Newman school in Luton.

**LUTON TOWN FOOTBALL CLUB**



## 1990-1991

### FAREWELLS



Former captain Danny Wilson was the most notable departure from the club during the close season when he moved on to join Sheffield Wednesday early in August. Danny, who will be 31 next New Year's Day, joined us from Brighton and Hove Albion in 1987 and gave three years of top-class service in midfield. He made a total of 142 appearances and scored 30 goals, including one at Wembley in 1988 when he collected a winners' medal for his part in the Littlewoods Cup win over Arsenal. We all wish Danny and his family all the very best of luck in the future.

Danny was not the only experienced former Town favourite to leave Kenilworth Road last summer and, in fact, his move to the Owls followed Les Sealey's free transfer to Manchester United. Les, like Danny, was a great servant to the club and he made more than 250 appearances in goal during his time as a Luton Town player. We wish Les a long and happy future with his new club.



Postscript: We also extend our best wishes to Mick Kennedy who left the Town for Stoke City only a week before the start of the season. In his one season with the Hatters, Mick proved to be a valuable asset in midfield and no-one will forget his part in the great escape victory at Derby on the final day.

**LUTON TOWN FOOTBALL CLUB**





# 1990-1991

## YOUTH TRAINING AND DEVELOPMENT

The discovery and development of young players is a vital part of the operation of any football club. At Luton Town, this programme begins with the youth development scheme and embraces the club's Youth Training scheme. Several players on the club's staff have made progress successfully through the system to reach the senior squad and establish themselves. Julian James, who broke into the first team last season, is a perfect example.

The Youth Development Programme is the responsibility of Paul Lowe whose work links him with the local schools and youth football in the area. Paul links with chief scout Ron Howard and youth coach George Ley in the overall scheme but with all the Town's professional coaching staff and the local F.A. qualified coaches Colin Cardine and Jan Pitroski in the work done in the Centres of Excellence which are the initial nerve-centres of the scheme.

The club has three approved F.A. centres operating at Kenilworth Road, Milton Keynes and Stevenage. They provide cover of the club's catchment area and assist in the recruitment of young talent. Players attending the centres range from 11 to 14 years old and are selected from Bedfordshire, Buckinghamshire, Cambridgeshire and Hertfordshire. Players usually represent their league or school representative sides. They are initially recruited to attend one session weekly for professional coaching.

The Stevenage centre is a new one for the club and opened officially in September 1990 at the John Henry Newman Leisure Centre. This new centre enhances the club's presence in Hertfordshire and will help to foster relationships with local team managers and school teachers.

The club also organises weekly visits to local schools to coach schoolchildren who are usually of mixed ability and both sexes. Last season, these visits proved to be very popular particularly when members of the current first team squad joined in. Many of the club's own trainees were also present and enjoyed themselves. This season, schools are to be invited to the club to watch the players training and then train on the pitch at Kenilworth Road.

This season will also see the launch of an under-16 team for organised fixtures on Sunday mornings against the London clubs. The team will consist of players who have signed Associated Schoolboy forms with the club and who are being considered for the next step on the trail towards the top—positions as trainees for the following year. All the fixtures are played on a friendly basis, no league tables are produced and the emphasis is on performance and the development of the players.

These are the qualities in the game which George also concentrates on with the players who are offered trainee terms with the club. "I believe it is more important to develop the individual talents of the players and to encourage them to express themselves than to worry about the result in a life-and-death sort of way," he said. "That does not mean results are not important, but it does mean that I want to see attractive and exciting football. I would rather see the team win 3-2 than 1-0 and always say that we should be aiming to score three goals every time we play. That way, we are going to be winning more than we lose and playing properly too."

George believes the way players develop as trainees and youth players is important because it moulds them for the next two or three years. "But a lot can change in a year as the boys grow up and try to emulate many



# 1990-1991

of the others who have gone through the system here and reached the First Division."

The Youth Training Scheme, administered and funded by the Football League, replaced the old YTS operation which was disbanded earlier this year following the demise of the Manpower Services Commission. The funds for the scheme are performance-based and dependent upon how successfully the trainees develop skills and qualifications. During the scheme, the players attend college on a day-release programme and work towards various City and Guilds examinations including recreation and leisure, communications studies, life-saving and first aid and computer technology. They also receive guidance and counselling in the employment opportunities in recreation leisure. The scheme is monitored quarterly by the coaches and at college. This year the club has taken on seven young players as trainees—Andrew Elliott, Paul Hancock, Matthew Holtam, Paul Murray, Paul Newman, Lee Rogers and Robert Sutton—and we wish them the best of luck. They join a group of second year trainees, Jamie Campbell, David Cooper, David Gormley, John Lawford, Ian Rutherford and Darren Thompson, who know the ropes already and are working towards the next step up.

Every year the club offers professional forms to a group of trainees who are ready to make the final step up and this year we offer congratulations and best wishes to Mark McGonagle, Stuart Brown, Richard Watkiss, Paul Telfer, Darren Salton, Ken Gillard and Matthew Jackson. Let us hope their skills flourish and they all enjoy long and successful careers with Luton Town.



*Julian James, one of the outstanding successes of the club's youth policy*



## LUTON TOWN FOOTBALL CLUB

## LUTON TOWN FOOTBALL CLUB





# 1990-1991

## Our Playing Staff

All appearances denote League and Cup totals and all debuts are League except where noted.



### TIM ALPRESS

Defender.

Age: 19. Born: Hitchin 27.1.71.

Height: 6ft.

Weight: 11st. 11lbs.

Signed: from apprentice (1988).

Career record: 2 appearances.

Luton Town debut: v. Crystal

Palace (A), Zenith Data

Systems Cup quarter-final,

27.11.89.

League debut: v Aston Villa (A),

Division One, 10.3.90.

### DAVID BEAUMONT

Defender.

Age: 26. Born: Edinburgh  
10.12.63.

Height: 6ft.

Weight: 12st. 3lbs.

Signed: from Dundee United  
(£150,000, 1989).

Career record: Dundee Utd.

89 appearances, 3 goals.

Luton Town 38(+3)

appearances.

Luton Town debut: v. West

Ham (A), Littlewoods Cup  
semi-final, 12.2.89.

League debut: v Middlesbrough

(H), Division One, 18.2.89.

International record: youth,  
u-21 caps (Scotland).



## LUTON TOWN FOOTBALL CLUB



# 1990-1991

## Our Playing Staff

### KINGSLEY BLACK

Forward.

Age: 22. Born: Luton, 22.6.68.

Height: 5ft 8ins.

Weight: 10st 11lbs.

Signed: from school (1986).

Career record: 100(+9)

appearances, 21 goals.

Luton Town debut: v QPR (A)

Division One, 26.9.87.

International record: full caps  
(Northern Ireland)



### TIM BREACKER

Right-back

Age: 25. Born: Bicester 2.7.65.

Height: 5ft 11½ins.

Weight: 13st.

Signed: from apprentice (1983).

Career record: 245(+8)

appearances, 3 goals.

Luton Town debut: v. Ipswich

Town (A), Division One,

31.3.84.

International record: u-21 caps  
(England).



## LUTON TOWN FOOTBALL CLUB





# 1990-1991

## Our Playing Staff



**STUART BROWN**

Striker.

Age: 18. Born: Cambridge  
19.9.71.

Height: 5ft. 10ins.

Weight: 12st. 8lbs.

Signed: from trainee (1990).

**ALEC CHAMBERLAIN**

Goalkeeper.

Age: 26. Born: March, Cambs.  
20.6.64.

Height: 6ft. 1¾ins.

Weight: 13st. 2lbs.

Signed: from Everton (£150,000,  
1988).

Previous clubs: Ipswich Town,  
Colchester United, Everton and  
Tranmere Rovers (loan).

Career record: Colchester (219),  
Tranmere (15), Luton (51).

Luton Town debut: v. Crystal  
Palace (A), Simod Cup,  
10.1.89.

League debut: v. Coventry (H),  
Division One, 15.4.89.



**LUTON TOWN FOOTBALL CLUB**



# 1990-1991

## Our Playing Staff



**RICHARD COOKE**

Forward.

Age: 24. Born: Islington 4.9.65.

Height: 5ft. 6ins.

Weight: 9st.

Signed: from Bournemouth  
(£140,000, 1988).

Previous career: Spurs,  
Birmingham City (loan),  
Bournemouth.

Career record: Spurs 12(+5)  
apps, 2 goals.

Birmingham 6 apps.

Bournemouth 75(+13)  
apps, 19 goals.

Luton Town 4(+15)  
apps, 1 goal.

Luton Town debut: v. Oxford  
United (A), Zenith Data  
Systems Cup, 8.11.89.

League debut: v. Nottingham  
Forest (H), Div One, 26.11.89.



**GARY CRAWSHAW**

Striker.

Age: 19. Born: Reading 4.2.71.

Height: 5ft. 9ins.

Weight: 10st. 10lbs.

Signed: from apprentice.

**LUTON TOWN FOOTBALL CLUB**





# 1990-1991

## Our Playing Staff



**IAIN DOWIE**

Striker.

Age: 25. Born: Hatfield 9.1.65.

Height: 6ft. 1½ins.

Weight: 13st. 2lbs.

Signed: from Hendon (£30,000, 1988).

Career record: 31(+12) apps, 12 goals.

Luton Town debut: v. Crystal Palace (A), Simod Cup, 10.1.89.

League debut: v. Tottenham (H), Div One, 28.3.89.

International Record: u-23, full caps (Northern Ireland).

**JOHN DREYER**

Defender.

Age: 27. Born: Alnwick, Northumberland 11.6.63.

Height: 6ft. ¾in.

Weight: 12st. 9lbs.

Signed: from Oxford (£140,000, 1988).

Previous Clubs: Torquay, Fulham (loan), Oxford United.

Career Record: Torquay (5).

Fulham 12 apps, 2 goals.

Oxford United 71(+4), 2 goals.

Luton Town 65(+2), 4 goals.

Luton Town debut: v. Sheffield Wednesday (A), Div One, 27.8.88.



**LUTON TOWN FOOTBALL CLUB**



# 1990-1991

## Our Playing Staff

**LARS ELSTRUP**

Striker.

Age: 27. Born: Raaby, Denmark.

Height: 5ft. 11½ins.

Weight: 12st.

Signed: From Odense (£650,000, 1989).

Previous clubs: Brondby, Feyenoord, Odense.

Career record: Luton Town 16(+10) apps, 9 goals.

Luton Town debut: v. Charlton Athletic (H), Div. One, 9.9.89.

International record: full caps (Denmark).



**SEAN FARRELL**

Striker.

Age: 21. Born: Watford 28.2.69.

Height: 6ft. 1½ins.

Weight: 13st.

Signed: from apprentice (1987).

Career record: 1 app as sub.



**LUTON TOWN FOOTBALL CLUB**





# 1990-1991

## Our Playing Staff



**KEN GILLARD**

Full-back.  
Age: 18. Born: Dublin 30.4.72.  
Height: 5ft. 9ins.  
Weight: 11st. 6lbs.  
Signed: from trainee (1989).

**PAUL GRAY**

Striker.  
Age: 20. Born: Portsmouth  
28.1.70.  
Height: 5ft. 9ins.  
Weight: 11st. 10lbs.  
Signed: from apprentice (1988).  
Career record: 3(+7) apps, 2  
goals.  
Luton Town debut: v. Everton  
(A), Simod Cup, 16.2.88.  
League debut: v. Everton (A),  
Div One, 1.1.90.  
International record: schoolboy,  
youth, u-21 caps (Northern  
Ireland).



**LUTON TOWN FOOTBALL CLUB**



# 1990-1991

## Our Playing Staff



**RICHARD HARVEY**

Full-back.  
Age: 21. Born: Letchworth  
17.4.69.  
Height: 5ft. 10½ins.  
Weight: 11st 10lb.  
Signed: from apprentice (1986).  
Career record: 40(+12) apps.  
Luton Town debut: v. Q.P.R.  
(H), Div One, 1.11.86.  
International record: u-15  
schools, u-17, u-19, youth caps  
(England).



**CERI HUGHES**

Midfield.  
Age: 19. Born: Rhondda Valley  
26.2.71.  
Height: 5ft. 10ins.  
Weight: 11st. 9lbs.  
Signed; from apprentice (1989).  
Career record: 1 appearance.  
Luton Town debut: v. Aston  
Villa (A), Div One, 10.3.90.  
International honours: youth  
and u-21 caps (Wales).

**LUTON TOWN FOOTBALL CLUB**







# 1990-1991

## Our Playing Staff



**MATTHEW JACKSON**

Defender.

Age: 18. Born: Leeds 19.10.71.

Height: 6ft. 1ins.

Weight: 12st. 12lbs.

Signed: from schoolboy (1990).

International record: Schoolboy caps (England).

**JULIAN JAMES**

Defender.

Age: 20. Born: Luton 22.3.70.

Height 5ft. 10½ins.

Weight: 12st.

Signed: from apprentice.

Career record: 24(+5) 1 goal.

Luton Town debut: v.

Southampton (A), Div One, 7.5.88.

International record: u-21 caps (England).



**LUTON TOWN FOOTBALL CLUB**



# 1990-1991



**LUTON TOWN FOOTBALL CLUB**





1990-1991



**Back Row:**— Richard Cooke, Paul Gray, Lars Elstrup, Kurt Nogan, Richard Harvey, Jason Rees. **Middle Row:**— George Ley (coach), John Moore (coach), Julian James, Marvin Johnson, Iain Dowie, Andy Petterson, Alec Chamberlain, Graham Rodger, Darron McDonough, Mick Kennedy (now Stoke City), Dave Galley (physio), John Faulkner (Asst Manager). **Front Row:**— David Beaumont, Tim Breacker, Danny Wilson (now Sheffield Wednesday), Jim Ryan (Manager), John Dreyer, David Preece, Kingsley Black.

**LUTON TOWN FOOTBALL CLUB**

**LUTON TOWN FOOTBALL CLUB**





**1990-1991**



*Iain Dowie*



*Lars Elstrup*



*David Preece*

**LUTON TOWN FOOTBALL CLUB**



**1990-1991**

**Our Playing Staff**

**MARVIN JOHNSON**

Defender.

Age: 21. Born: Wembley  
29.10.68.

Height: 5ft. 11½ins.

Weight: 11st. 5lbs.

Signed: from apprentice (1986).

Career record: 38(+7).

Luton Town debut: v. Everton  
(A), Simod Cup, 16.2.88.

League debut: Wimbledon (A),  
Div One, 5.3.88.



**DARRON McDONOUGH**

Defender.

Age: 27. Born: Antwerp, Belgium  
7.11.62.

Height: 5ft. 11ins.

Weight: 11st 7lbs.

Signed: from Oldham (£87,000,  
1986).

Previous career: Oldham  
Athletic.

Career record: Oldham 195(+5)  
apps, 17 goals.

Luton Town 74(+14)

apps, 7 goals.

Luton Town debut: v.  
Wimbledon (A), Div One,  
8.11.86.

**LUTON TOWN FOOTBALL CLUB**







# 1990-1991

## Our Playing Staff



**MARK McGONAGLE**

Right wing.  
Age: 18. Born: Luton 9.2.72.  
Height: 5ft. 5ins.  
Weight: 10st 1lb.  
Signed: from trainee (1990).

**KURT NOGAN**

Striker.  
Age: 19. Born: Cardiff 9.9.70.  
Height: 5ft. 10½ins.  
Weight: 11st. 5lbs.  
Signed: from apprentice (1989).  
Career record: 10 apps,  
2 goals.  
Luton Town debut: v. Liverpool  
(A), Div One, 13.1.90.  
International record: u-21 caps  
(Wales).



**LUTON TOWN FOOTBALL CLUB**



# 1990-1991

## Our Playing Staff

**MICK O'BRIEN**

Midfield.  
Age: 19. Born: Dublin 28.11.70.  
Height: 5ft. 11ins.  
Weight: 12st.  
Signed: from trainee (1987).  
Career record:  
Luton Town debut:  
International record: youth caps  
(Eire).



**MARK PEMBRIDGE**

Full-back.  
Age: 19. Born: Merthyr Tydfil  
29.11.70.  
Height: 5ft. 7ins.  
Weight: 11st.  
Signed: from trainee (1989).  
Career record:  
Luton Town debut:  
International record:



**LUTON TOWN FOOTBALL CLUB**

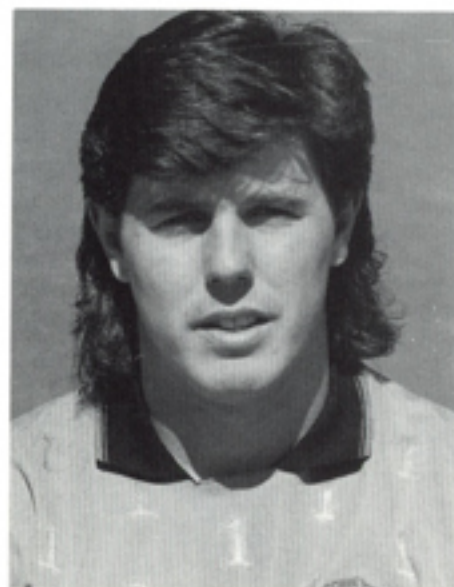






# 1990-1991

## Our Playing Staff



**ANDY PETTERSON**

Goalkeeper.

Age: 20. Born: Fremantle,

Australia 26.9.69.

Height: 6ft. 1½ins.

Weight: 14st. 11lbs.

Signed: from triallist (1988).

Previous career: Clerk.

Career record: East Fremantle,  
Tricolore/Australian Institute of  
Sport.

**DAVID PREECE**

Midfield.

Age: 27. Born: Bridgnorth  
28.5.63.

Height: 5ft. 5ins.

Weight: 11st.

Signed: from Walsall (£150,000,  
1984).

Previous career: Walsall.

Career record: Walsall 131(+4)  
apps, 11 goals.

Luton Town 170 (+3)  
apps, 8 goals.

Luton Town debut: v. Aston  
Villa (H), Div One, 8.12.84.

International career: 'B' caps  
(England).



**LUTON TOWN FOOTBALL CLUB**



# 1990-1991

## Our Playing Staff

**JASON REES**

Midfield.

Age: 20. Born: Aberdare  
22.12.69.

Height: 5ft. 5½ins.

Weight: 9st. 10lbs.

Signed: from apprentice.

Career record: 8(+6) apps.

Luton Town debut: v.

Manchester United (A), Div  
One, 3.3.90.

International record: youth,  
schoolboy and u-21 (Wales).



**ALAN RICHARDS**

Midfield.

Age: 18. Born: Prescot 1.10.71.

Height: 6ft. 1ins.

Weight: 12st.

Signed: from Chester (schoolboy,  
1990).



**LUTON TOWN FOOTBALL CLUB**







# 1990-1991

## Our Playing Staff



**GRAHAM RODGER**

Defender.

Age: 23. Born: Glasgow, 1.4.67.

Height: 6ft. 2ins.

Weight: 12st.

Signed: from Coventry (£150,000, 1989).

Previous career: Wolves, Coventry City.

Career record: Wolves 1 app, Coventry 35(+7) apps, 2 goals, Luton 3 apps.

Luton Town debut: v. Mansfield Town (H), Littlewoods Cup Second Round, 3.10.89.

League debut: v. Aston Villa (H), Div One, 14.10.89.

International record: u-21 caps (England).

**DARREN SALTON**

Defender.

Age: 18. Born: Edinburgh 16.3.72.

Height: 6ft. 2ins.

Weight: 12st. 12lbs.

Signed: from trainee (1989).

International record: schoolboy and youth caps (Scotland).



**LUTON TOWN FOOTBALL CLUB**



# 1990-1991

## Our Playing Staff

**IAN SCOTT**

Midfield.

Age: 21. Born: Luton 25.11.68.

Height: 5ft. 11ins.

Weight: 12st. 4lbs.

Signed: from apprentice (1986).

International record: youth cap (England).



**KEVIN SHANLEY**

Full-back.

Age: 19. Born: Dunstable 8.9.70.

Height: 6ft.

Weight: 12st.

Signed: from trainee (1989).



**LUTON TOWN FOOTBALL CLUB**





# 1990-1991

## Our Playing Staff



**PAUL TELFER**

Midfield.

Age: 18. Born: Edinburgh  
21.10.71.

Height: 5ft. 9ins.

Weight: 10st. 7lbs.

Signed: from trainee (1990).

**AARON TIGHE**

Midfield.

Age: 21. Born: Banbury 11.7.69.

Height: 5ft. 9ins.

Weight: 11st. 4lbs.

Signed: from apprentice (1986).

Career record: 1(+1) apps.

Luton Town debut: v. Oxford

United (A), Zenith Data

Systems Cup 8.11.89.

International record: schoolboy,  
youth and u-21 caps (Ireland).



**LUTON TOWN FOOTBALL CLUB**



# 1990-1991

## Our Playing Staff

**RICHARD WATKISS**

Goalkeeper.

Age: 18. Born: Hitchin 22.11.71.

Height: 5ft. 10ins.

Weight: 11st. 8lbs.

Signed: from trainee (1990).



**STEVE WILLIAMS**

Midfield.

Age: 32. Born: London 12.7.58.

Height: 5ft. 11ins.

Weight: 10st. 11lbs.

Signed: from Arsenal (£300,000,  
1988).

Previous career: Southampton,  
Arsenal.

Career record: Southampton

344(+2) apps, 26 goals.

Arsenal 119(+2) apps, 5 goals.

Luton Town 29 apps, 1 goal.

Luton Town debut: v. Sheffield

Wednesday (A), Div One,

27.8.88.

International record: full caps  
(England).



**LUTON TOWN FOOTBALL CLUB**





# 1990-1991

## Our Playing Staff

### JAMIE CAMPBELL

Defender.

Age: 17. Born: Birmingham  
21.10.72.

Height: 6ft. 1in.

Weight: 11st 4lbs.

Signed: as trainee (1989).

### DAVID COOPER

Left-back

Age: 17. Born: Welwyn 7.3.73.

Height: 5ft. 10ins.

Weight: 11st. 10lbs.

Signed: as trainee (1989).

### ANDREW ELLIOTT

Midfield.

Age: 16. Born: Newcastle 2.5.74.

Height: 5ft. 7ins.

Weight: 9½st.

Signed: as trainee (1990).

### DAVID GORMLEY

Striker.

Age: 17. Born: Dublin 25.8.72.

Height: 5ft. 6½ins.

Weight: 10st. 9lbs.

Signed: as trainee (1989).

International record: u-15 and  
u-16 caps (Ireland).

### PAUL HANCOCK

Goalkeeper.

Age: 16. Born: Huntingdon  
6.2.74.

Height: 6ft.

Weight: 13st. 11lbs.

Signed: as trainee (1990).

### MATTHEW HOLTAM

Midfield.

Age: 16. Born: Cardiff 19.6.74.

Height: 5ft. 9ins.

Weight: 10st. 4lbs.

Signed: as trainee (1990).

### JOHN LAWFOR

Striker.

Age: 17. Born: Watford 2.5.73.

Height: 5ft. 11ins.

Weight: 11st. 7lbs.

Signed: as trainee (1989).

### PAUL MURRAY

Midfield/Forward.

Age: 16. Born: Henley 12.10.73.

Height: 5ft. 8ins.

Weight: 9st. 9lbs.

Signed: as trainee (1990).

### PAUL NEWMAN

Striker.

Age: 16. Born: Sandy 19.10.73.

Height: 5ft. 6½ins.

Weight: 9st. 11lb.

Signed: as trainee (1990).

### LEE ROGERS

Midfield.

Age: 16. Born: Cardiff 15.9.73.

Height: 5ft. 10ins.

Weight: 11st. 13lbs.

Signed: as trainee (1990).

International record: u-15 and  
u-16 caps (Wales).



# 1990-1991

## Our Playing Staff

### IAN RUTHERFORD

Striker.

Age: 17. Born: Hitchin 25.12.72.

Height: 5ft. 10ins.

Weight: 11st. 12lbs.

Signed: as trainee (1990).

### DARREN THOMPSON

Midfield.

Age: 17. Born: Welwyn 24.10.72.

Height: 5ft. 7½ins.

Weight: 10st. 12lbs.

Signed: as trainee (1989).

### ROBERT SUTTON

Midfield.

Age: 16. Born: Sittingbourne,

Kent 4.5.74.

Height: 5ft. 5ins.

Weight: 9st. 7lbs.

Signed: as trainee (1990).



*Jamie Campbell in action against Norwich*



# LUTON TOWN FOOTBALL CLUB

# LUTON TOWN FOOTBALL CLUB





## Players all time appearances

NAME	Appearances								Goals			Total Total	
	FL	sub	FA	sub	FLC	sub	S	sub	FL	FA	FLC	S	App Goals
ALLPRESS, TIM LUTON	1	—	—	—	—	—	1	—	—	—	—	—	2+0 —
BEAUMONT, DAVID LUTON	31	3	—	—	6	—	1	—	—	—	—	—	38+3 —
BLACK, KINGSLEY LUTON	82	4	2	1	14	2	2	2	20	1	—	—	100+9 21
BREACKER, TIM LUTON	196	6	21	—	21	2	7	—	3	—	—	—	245+8 3
CHAMBERLAIN, ALEC													
COLCHESTER	188	—	10	—	11	—	10	—	—	—	—	—	219+0 —
TRANMERE(L)	15	—	—	—	—	—	—	—	—	—	—	—	15+0 —
LUTON	44	—	1	—	3	—	3	—	—	—	—	—	51+0 —
TOTAL	247	—	11	—	14	—	13	—	—	—	—	—	285+0 —
COOKE, RICHARD													
TOTTENHAM	9	2	1	—	1	1	1	2	2	—	—	—	12+5 2
BIRMINGHAM(L)	5	—	—	—	—	—	1	—	—	—	—	—	6+0 —
BOURNEMOUTH	63	9	4	1	6	2	2	1	15	1	3	—	75+13 19
LUTON	3	14	—	—	—	—	1	1	1	—	—	—	4+15 1
TOTAL	80	25	5	1	7	3	5	4	18	1	3	—	97+33 22
DOWIE, IAIN LUTON	27	10	—	1	1	1	3	—	8	—	—	4	31+12 12
DREYER, JOHN													
OXFORD	57	3	2	—	10	1	2	—	2	—	—	—	71+4 2
TORQUAY	5	—	—	—	—	—	—	—	—	—	—	—	5+0 —
FULHAM(L)	12	—	—	—	—	—	—	—	2	—	—	—	12+0 2
LUTON	54	2	1	—	8	—	2	—	3	—	1	—	65+2 4
TOTAL	128	5	3	—	18	1	4	—	7	—	1	—	153+6 8
ELSTRUP, LARS LUTON	13	10	—	—	3	—	—	—	4	—	5	—	16+10 9
FARRELL, SEAN LUTON	—	1	—	—	—	—	—	—	—	—	—	—	0+1 —
GRAY, PAUL LUTON	2	5	—	—	—	—	1	2	1	—	—	1	3+7 2



HARVEY, RICHARD LUTON	32	11	2	—	3	—	3	1	—	—	—	—	40+12 —
HUGHES, CERI LUTON	1	—	—	—	—	—	—	—	—	—	—	—	1+0 —
JAMES, JULIAN LUTON	20	4	1	1	1	—	2	—	1	—	—	—	24+5 1
JOHNSON, MARVIN LUTON	30	6	2	—	2	1	4	—	—	—	—	—	38+7 —
McDONOUGH, DARRON													
OLDHAM	178	5	5	—	12	—	—	—	14	—	3	—	195+5 17
LUTON	58	12	6	1	8	1	2	—	5	1	1	—	74+14 7
TOTAL	236	17	11	1	20	1	2	—	19	1	4	—	269+19 24
NOGAN, KURT LUTON	10	—	—	—	—	—	—	—	2	—	—	—	10+0 2
PREECE, DAVID													
WALSALL	107	4	6	—	17	—	1	—	5	1	5	—	131+4 11
LUTON	144	3	10	—	13	—	3	—	5	1	2	—	170+3 8
TOTAL	251	7	16	—	30	—	4	—	10	2	7	—	301+7 19
REES, JASON LUTON	8	6	—	—	—	—	—	—	—	—	—	—	8+6 —
RODGER, GRAHAM													
WOLVES	1	—	—	—	—	—	—	—	—	—	—	—	1+0 —
COVENTRY	31	4	1	1	3	1	—	1	2	—	—	—	35+7 2
LUTON	2	—	—	—	1	—	—	—	—	—	—	—	3+0 —
TOTAL	34	4	1	1	4	1	—	1	2	—	—	—	39+7 2
TIGHE, AARON LUTON	—	—	—	—	—	—	1	1	—	—	—	—	1+1 —
WILLIAMS, STEVE													
SOUTHAMPTON	277	1	27	—	28	1	12	—	18	3	3	2	344+2 26
ARSENAL	93	2	11	—	15	—	—	—	4	—	1	—	119+2 5
LUTON	24	—	—	—	4	—	1	—	1	—	—	—	29+0 1
TOTAL	394	3	38	—	47	1	13	—	23	3	4	2	492+4 32





# 1990-1991



## Review of the season—one fan's personal happy memories By Brian Swain

*Sports Editor of the Luton News and Luton Town Soccerline reporter.*

ONE OF THE delights of following Luton Town is that you never know what to expect next. They can raise you to the heights of unbelievable happiness, yet just as easily plunge you into deep despair.

So it was in 1989/90, but all of us who were lucky enough to be at the Baseball Ground for the last match of the season will remember most the intoxicating finale to another season that dished out a roller-coaster mix of emotions.

Was the day out in Derby, May 5, 1990, better than Maine Road, May 14, 1983?

I think it was—just. But how I wish the old heart had not been put under such awful strain again! In the delirious joy that greeted the final whistle at the Baseball Ground the pleasure was doubled because we knew Brian Clough's lot had done the day's other important business, at Hillsborough. Nigel Jemson, who missed a sitter that would have given Forest a win at Kenilworth Road on his First Division debut on Boxing Day, hammered the final nail into Sheffield Wednesday's relegation coffin. Funny old game, isn't it?

It surely was a funny old season for the Town. With hindsight we can see where mistakes were made—and they are made at every club—and where Lady Luck kicked us in the teeth. I suppose Ray Harford might muse on the luck: although we weren't picking up too many away points we started the season looking a good bet for a mid-table finish at least. We were seventh when the season was five games old, when our 1-0 victory at Kenilworth Road was Charlton's first defeat.

But the talents of Mick Harford were confined to the treatment room and Lars Elstrup took time to settle in a strange country with new teammates. He hit five goals in two Littlewoods Cup games against Mansfield, and we kidded ourselves we were going to Wembley for the third consecutive season. Everton, and two-goal Mike Newell, shattered that dream.

Other dreams were about to be ruined as well, as a crippling injury list hit Kenilworth Road. Darron McDonough suffered a shoulder dislocation and then ligament damage, and was out for five months. David Beaumont suffered as long with an ankle injury. Graham Rodger, the former Coventry defender, came in for his big chance . . . played two league games and was then out for the rest of the season with ankle ligament problems.

Sean Farrell and Mick O'Brien, young stars of immense potential, had no sooner been promoted to the league squad than they too suffered major injuries.

At one stage the Town had a complete squad of injured men, with Elstrup also to suffer grievously, through two cartilage operations.

Fortunately, we also had reserves like Iain Dowie. He was third choice at the start of the season behind Harford and Farrell for the centre-forward spot. By the time we went to Derby he was the unchallenged number one.

Was it co-incidence that form and results tailed off through the autumn and into winter? We were in 11th place when we beat Derby at home—Dowie the matchwinner in his second Division One game—in early November. We then went nine league games without a win, slumped to 19th place, and Ray Harford left a couple of days after the New Year's Day defeat at Everton.

He and I used to get into animated discussions about the sort of football the Town were playing. Long ball was the phrase guaranteed to cause debate. Whatever the Harford style—and we should be forever grateful for the Littlewoods Cup joy he gave us in April 1988—the fans were not too happy with its league results.

Terry Mancini stayed long enough to lead us to an awful performance and a 4-1 drubbing in the FA Cup against Second Division strugglers Brighton, and 1990 looked a bleak prospect as I drove home from the Goldstone on January 6.

Five days later we had our third manager in nine days, and the appointment of Jim Ryan was a breath of early Spring. He pulled a rabbit out of the hat for his first game at Liverpool in the shape of 19-year-old Kurt Nogan, who had the cheek to stun the mighty Kop by scoring on his debut to put us 2-1 up. We drew 2-2 with the champions, and suddenly there was a feeling in the air that change was being made for the good. It had been made only just in time, giving Jim 17 games to drag us out of the mire.

Mick Harford went to Derby a month after Roy Wegerle had left for QPR, and the new young manager cheerfully accepted the challenge of working with what he had. It was men against boys at times—but how quickly those boys grew up. Kingsley Black was re-converted into a winger, David Preece's passing skill came into prominence again, and everywhere around Kenilworth Road there was a new spring in the



# 1990-1991



step, and a confidence that a difficult job could be accomplished.

But we were still 19th, with dreadful away results dragging us down and looking all the more damaging as we hit a few stumbles at home. The game at Wimbledon in mid-February therefore came as a major shock on a night when fewer than 4,000 bothered to turn up. Nogan got his second goal of the season and incredibly, after we had conceded an equaliser, Dowie popped up in the last minute to give us our first away win in the league for 14 months, after 22 consecutive failures.

On the same day Millwall had appointed Bob Pearson as manager after sacking John Docherty. Our win at Plough Lane carried us above Millwall and they never recovered. Bruce Rioch took over at The Den when relegation was already certain.

Manchester City became the next target to overhaul—we had to believe that Charlton and Millwall were not going to catch us. But still the results were patchy while players got re-accustomed to producing what a lot of us think of as 'The Luton Style'. Defeat at Charlton was a bitter blow, and things got dodgy again as we lost at Old Trafford, as we have done on every visit to that famous ground. With two home points dropped to Southampton we were getting a little worried again when Coventry came for a midweek match in March. Amazingly that man Dowie provoked a huge roar with another last-minute winner after Coventry had been 2-1 ahead at three-quarter time.

But the form roller-coaster was still roaring along—we lost at Aston Villa and disaster loomed when we let Manchester City go home with a 1-1 draw the week after. City, who had changed their manager much earlier in the season, were to pull clear of relegation within a few weeks.

But we enjoyed the home win over Millwall that put us two points ahead of the Maine Road men. All we had to do was hold it—40 points was the target said escapist extraordinaire Lennie Lawrence of Charlton. He got it wrong—43 turned out not to be enough for the unfortunate Ron Atkinson at Hillsborough.

Defeats at Norwich and Chelsea—well deserved at Carrow Road but unluckily at Stamford Bridge—condemned us to the agony of 18th place, the third relegation place, until the last day of the season.

Worst of all, the nerves and tension took over when Everton came to Kenilworth Road in mid-April and got a draw after we had been two up. For the first time relegation looked a very real possibility, particularly when we were beaten 3-0 at Nottingham Forest two days later, on Easter Monday.

We were left knowing we had to win our last three matches of the season, and hope that Sheffield Wednesday failed miserably on their run-in.

McDonough and Beaumont were fit again, and Beaumont returned for the final push. Arsenal were seen off remarkably easily at Kenilworth Road, and the crowd roared their approval not only for a good result but for the way it was achieved: it was smooth passing football again, and the Gunners were very much second best.

We looked forward to another home game: Crystal Palace, safe from relegation and with their minds on the FA Cup final against Manchester United, seemed ideal opposition. We knew we had better players and home advantage. But what agony we had to suffer that day in late April: Palace bottled up the game, and First Division survival was slipping away as we were unable to get the breakthrough. We were within 54 seconds of relegation when Dowie the last-minute expert, did it again, converting a cross by Jason Rees for his 11th goal of the season.

Sheffield Wednesday, meanwhile, having looked safe a month previously, had contrived to lose four out of five games and suddenly we had a slim lifeline. It was a bit of a long shot. We had to get our second away win of the season at Derby. Wednesday, as they had done for their previous four games, needed only one point to stay up and condemn us to the drop, whatever our result against Mick Harford and Co.

The showdown day will live forever in my memory. Astonishingly the team managed to banish its nerves and worries and turned in a truly brilliant display. Two up in 20 minutes, pegged back by half-time, they stormed through the second half like a championship team. Derby were simply swept aside, and lucky to get away with only one more goal in the net behind a keeper whose reputation counted for nothing. Tim Breacker had beaten Peter Shilton from 30 yards, a real wonder-strike for his first goal in over two years. Black, full of stealth and guile, rifled the second, and then got the winner with 16 minutes to go on a day when every Town man hit the heights in terms of skill, attitude, commitment and sheer hard work.

With Forest winning at Hillsborough, and that result coming through ahead of our final whistle, it was the perfect end to a season that had seen a few imperfections.

One thing I know: if the Town recapture the form they showed in the last 45 minutes of a dramatic and difficult campaign we will not be subject to the same stress and heart failure risk at the end of this season. But how we enjoyed the pain and agony before the happy ending!

## LUTON TOWN FOOTBALL CLUB

## LUTON TOWN FOOTBALL CLUB





## League Results 1989-90

MATCH NUMBER	DATE	COMPETITION	VENUE	OPPONENTS	Result & Scores		League Position	GOALSCORERS	Attendance	MATCH NUMBER
					F.T.	H.T.				
1	August 19	B.L.	A	Tottenham Hotspur	1-2	0-1	—	Wegerle 46	17668	1
2	22	B.L.	H	Sheffield Wednesday	2-0	1-0	—	Wilson (pen) 45, Black 62	9503	2
3	26	B.L.	H	Liverpool	0-0	0-0	10	—	11124	3
4	30	B.L.	A	Queens Park Rangers	0-0	0-0	11	—	10565	4
5	September 9	B.L.	H	Charlton Athletic	1-0	0-0	7	Wilson (pen) 59	8859	5
6	16	B.L.	A	Coventry City	0-1	0-1	8	—	11152	6
7	19	L.C. 2 (first leg)	A	Mansfield Town	4-3	2-3	—	Wegerle 6, 83, Elstrup 26, 49	5361	7
8	23	B.L.	H	Wimbledon	1-1	1-1	10	Wegerle (pen) 35	8449	8
9	30	B.L.	A	Manchester City	1-3	1-2	14	Black 43	23863	9
10	October 3	L.C. 2 (2nd leg)	H	Mansfield Town	7-2	3-1	—	Wegerle 14, 69, Preece 32, Elstrup 44, 46, 65, Dreyer 83	6519	10
11	14	B.L.	H	Aston Villa	0-1	0-1	16	—	9433	11
12	21	B.L.	H	Norwich City	4-1	1-0	12	Black 4, Dreyer 54, Wilson 65, Williams 76	9038	12
13	24	L.C. (3)	A	Everton	0-3	0-0	—	—	18428	13
14	28	B.L.	A	Millwall	1-1	1-1	14	Elstrup 42	10433	14
15	November 4	B.L.	H	Derby County	1-0	0-0	11	Dowie 48	8919	15
16	8	ZDC 3	A	Oxford United	3-2 (aet)	1-1	—	Dowie 35, 85, Gray 114	1754	16
17	11	B.L.	A	Crystal Palace	1-1	0-1	10	Wilson 57	11346	17
18	18	B.L.	H	Manchester United	1-3	0-2	13	Wilson 60	11141	18
19	25	B.L.	A	Southampton	3-6	1-2	13	Dreyer 24, Black 46, Elstrup 85	14014	19
20	27	ZDC QF	A	Crystal Palace	1-4	1-0	—	Dowie 26	3747	20
21	December 2	B.L.	H	Tottenham Hotspur	0-0	0-0	15	—	12620	21
22	9	B.L.	A	Sheffield Wednesday	1-1	0-1	15	James 65	16339	22
23	16	B.L.	A	Arsenal	2-3	1-2	18	Elstrup 30, 51 (pen)	28761	23
24	26	B.L.	H	Nottingham Forest	1-1	0-1	17	Cooke 82	10754	24
25	30	B.L.	H	Chelsea	0-3	0-1	19	—	10068	25
26	January 1	B.L.	A	Everton	1-2	0-2	19	Wilson (pen) 68	21743	26
27	6	FAC (3)	A	Brighton & Hove Albion	1-4	0-0	—	Wilson 66	10361	27
28	13	B.L.	A	Liverpool	2-2	0-1	19	Black 70, Nogan 72	35321	28
29	20	B.L.	H	Queens Park Rangers	1-1	1-1	19	Preece 5	9703	29
30	February 14	B.L.	A	Wimbledon	2-1	0-0	18	Nogan 51, Dowie 89	3496	30
31	19	B.L.	A	Charlton Athletic	0-2	0-1	18	—	6008	31
32	24	B.L.	H	Southampton	1-1	1-1	18	Dowie 3	9417	32
33	March 3	B.L.	A	Manchester United	1-4	0-3	18	Black 79	35327	33
34	7	B.L.	H	Coventry City	3-2	1-0	17	Black 20, Gray 80, Dowie 86	8244	34
35	10	B.L.	A	Aston Villa	0-2	0-1	17	—	22505	35
36	17	B.L.	H	Manchester City	1-1	0-0	17	Wilson (pen) 72	9765	36
37	24	B.L.	H	Millwall	2-1	1-0	17	McCarthy (O.G.) 42, Black 76	9027	37
38	31	B.L.	A	Norwich City	0-2	0-1	18	—	14451	38
39	April 7	B.L.	A	Chelsea	0-1	0-0	18	—	15221	39
40	14	B.L.	H	Everton	2-2	2-0	18	Dowie 2, 41	9538	40
41	16	B.L.	A	Nottingham Forest	0-3	0-0	18	—	17001	41
42	21	B.L.	H	Arsenal	2-0	1-0	18	Dowie 41, Black 58	11595	42
43	28	B.L.	H	Crystal Palace	1-0	0-0	18	Dowie 89	10369	43
44	May 5	B.L.	A	Derby County	3-2	2-2	17	Breacker 2, Black 19, 75	17044	44

Key:-

B.L.—Barclays League, L.C.—Littlewoods Cup, ZDC—Zenith Data Cup, FAC—Football Association Cup.  
aet—after extra time.Home League Attendances: Highest 12620 v TOTTENHAM Lowest 8244 v COVENTRY Average 9872  
Compared with 88-89 + 522

## Goal Scorers

League: Black 11, Dowie 8, Wilson 7 (4 pens), Elstrup 4 (1 pen), Wegerle 2 (1 pen), Dreyer 2, Nogan 2, Preece 1, Cooke 1, Gray 1, Breacker 1, James 1, Williams 1, Opponents 1 (43)

L/W Cup: Elstrup 5, Wegerle 4, Preece 1, Dreyer 1 (11)

FA Cup: Wilson 1 (1)

ZDC: Dowie 3, Gray 1 (4)





# League Appearances 1989-1990



MATCH NUMBER	CHAMBERLAIN	BREACKER	HARVEY	DREYER	WILSON	KENNEDY	MCDONOUGH	RODGER	JOHNSON	DONAGHY	JAMES	BEAUMONT	PREECE	WEGERLE	ELSTRUP	DOWIE	BLACK	REES	NOGAN	WILLIAMS	COOKE	GRAY	HARFORD	ALLPRESS	HUGHES	TIGHE	REFEREE	MATCH NUMBER		
1	1	1	14	5	6	11	3					4	8*	10		12	9			(7)							T. HOLBROOK	1		
2	1	1	14	5	9	7	3					6	10	8	12		11*			4*							D. AXCELL	2		
3	1	1	14	3	9	(7)	3					6	10	8	12		11*			4*							A. GUNN	3		
4	1	1	14	3	9	7	3					6	10	8	12		11*			4*							J. DEAKIN	4		
5	1	1	12	3	4	7	3*					6	(10)	8	9		11										R. NIXON	5		
6	1	1	12	3	4	7	3*					6	10	8	9		11			11*							J. ASHWORTH	6		
7	1	1	12	3	4	7	3*					6	10	8	9		12										K. REDFERN	7		
8	1	1	12	3	4	7	3*					6	10	8	9		11										K. HACKETT	8		
9	1	1	12	3	4	7	3*					6	10	8	9		11										R. MILFORD	9		
10	1	1	12	3	4	7	3*					6	10	8	9		11										P. FOAKES	10		
11	1	1	12	3	4	7	3*					6	10	8	9		11										P. DON	11		
12	1	1	12	3	4	7	3*					6	10	8	9		11										B. STEVENS (R. COATEN-Sub)	12		
13	1	1	14	3	4	10	(5)					6	10	8	9		11										R. MILFORD	13		
14	1	1	14	3	4	10	(5)					6	10	8	9		11										D. ELLERAY	14		
15	1	1	14	3	4	10*						6	10	8	9		11										N. MIDGLEY	15		
16	1	1	12	3	4	10						6	11	9	(9)	8	11										P. TYLDSLEY	16		
17	1	1	12	3	4	10						6	(10)	8	9		11										G. COURTNEY	17		
18	1	1	12	3	4	10						6	(10)	8	9		11										J. MOULES	18		
19	1	1	12	3	4	10						6	(10)	8	9		11										R. GROVES	19		
20	1	1	12	3	4	10						6	(10)	8	9		11										K. MORTON	20		
21	1	1	12	3	4	10						6	11	8	9		11										D. HEDGES	21		
22	1	1	12	3	4	10						6	(10)	8	9		11										R. HART	22		
23	1	1	12	3	4	10						6	11	8	9		11										L. DILKES	23		
24	1	1	14	3	4	4						6	10	8	9		11										D. VICKERS	24		
25	1	1	14	3	4	4						6	10	8	9		11										H. KING	25		
26	1	1	14	3	4	4						6	10	8	9		11										M. PECK	26		
27	1	1	14	3	4	4						6	10	8	9		11										D. AXCELL	27		
28	1	1	14	3	4	4						6	10	8	9		11										T. MILLS	28		
29	1	1	14	3	4	4						6	10	8	9		11										T. SIMPSON	29		
30	1	1	14	3	4	4						6	10	8	9		11										K. BARRATT	30		
31	1	1	14	3	4	4						6	10	8	9		11										R. GIFFORD	31		
32	1	1	14	3	4	4						6	10	8	9		11										P. DON	32		
33	1	1	14	3	4	4						6	10	8	9		11										K. REDFERN	33		
34	1	1	14	3	4	4						6	10	8	9		11										K. COOPER	34		
35	1	1	14	3	4	4						6	10	8	9		11										J. MARTIN	35		
36	1	1	14	3	4	4						6	10	8	9		11										B. HILL	36		
37	1	1	14	3	4	4						6	10	8	9		11										K. HACKETT	37		
38	1	1	14	3	4	4						6	10	8	9		11										D. HEDGES	38		
39	1	1	14	3	4	4						6	10	8	9		11										M. BODENHAM	39		
40	1	1	14	3	4	4						6	10	8	9		11										V. CALLOW	40		
41	1	1	14	3	4	4						6	10	8	9		11										D. ALLISON	41		
42	1	1	14	3	4	4						6	10	8	9		11										A. GUNN	42		
43	1	1	14	3	4	4						6	10	8	9		11										P. FOAKES	43		
44	1	1	14	3	4	4						6	10	8	9		11										B. STEVENS	44		
	38	38	17	38	35	30	15	2	7	5	19	16	30	13	13	26	36		8	10	14	3	2	1	1	-		League Appearances		
	-	-	-	-	-	-	-	-	-	-	-	-	-	-	-	-	-		6	-	-	8	5	3	-	-		Sub Appearances		
	3	3	1	3	3	2	2	1	0 + 1	-	-	3	3	3	3	0 + 1	2 + 1		-	-	1	-	-	-	-	-		L/Woods Cup Appearances		
	1	1	1	1	1	1	-	-	1	-	1	-	1	-	-	0 + 1	1		-	-	-	-	-	-	-	-		F.A. Cup Appearances		
	2	2	2	1	2	1	-	-	-	-	1	1	2	2	-	2	-		-	-	-	1 + 1	0 + 2	-	1	-	1 + 1		ZDC Appearances	

Key:-

Ⓢ indicates non playing sub

\* to the right of the number indicates first player substituted (by 12)

() around a players number indicates second player substituted (by 14)

\* to the left of the number indicates player sent off

Also Played: FARRELL 12(2), NON PLAYING SUB (5)  
POUTCH 12(35)

Players on Loan: DONAGHY (MAN. UTD)





## 1989-90 Final League Tables Barclays League Division One

	P.	W.	Home		F.	A.	W.	Away		F.	A.	Pts.
			D.	L.				D.	L.			
Liverpool	38	13	5	1	38	15	10	5	4	40	22	79
Aston Villa	38	13	3	3	36	20	8	4	7	21	18	70
Tottenham h.	38	12	1	6	35	24	7	5	7	24	23	63
Arsenal	38	14	3	2	38	11	4	5	10	16	27	62
Chelsea	38	8	7	4	31	24	8	5	6	27	26	60
Everton	38	14	3	2	40	16	3	5	11	17	30	59
Southampton	38	10	5	4	40	27	5	5	9	31	36	55
Wimbledon	38	5	8	6	22	23	8	8	3	25	17	55
Nottingham F.	38	9	4	6	31	21	6	5	8	24	26	54
Norwich City	38	7	10	2	24	14	6	4	9	20	28	53
Q.P.R.	38	9	4	6	27	22	4	7	8	18	22	50
Coventry City	38	11	2	6	24	25	3	5	11	15	34	49
Man. Utd.	38	8	6	5	26	14	5	3	11	20	33	48
Man. City	38	9	4	6	26	21	3	8	8	17	31	48
Crystal Palace	38	8	7	4	27	23	5	2	12	15	43	48
Derby County	38	9	1	9	29	21	4	6	9	14	19	46
LUTON TOWN	38	8	8	3	24	18	2	5	12	19	39	43
Sheff. Wed.	38	8	6	5	21	17	3	4	12	14	34	43
Charlton Ath.	38	4	6	9	18	25	3	3	13	13	32	30
Millwall	38	4	6	9	23	25	1	5	13	16	40	26

## Barclays League Division Two

	P.	W.	Home		F.	A.	W.	Away		F.	A.	Pts.
			D.	L.				D.	L.			
Leeds Utd.	46	16	6	1	46	18	8	7	8	33	34	85
Sheffield Utd.	46	14	5	4	43	27	10	8	5	35	31	85
Newcastle Utd.	46	17	4	2	51	26	5	10	8	29	29	80
Swindon T.	46	12	6	5	49	29	8	8	7	30	30	74
Blackburn R.	46	10	9	4	43	30	9	8	6	31	29	74
Sunderland	46	10	8	5	41	32	10	6	7	29	32	74
West Ham	46	14	5	4	50	22	6	7	10	30	35	72
Oldham Ath.	46	15	7	1	50	23	4	7	12	20	34	71
Ipswich Town	46	13	7	3	38	22	6	5	12	29	44	69
Wolves	46	12	5	6	37	20	6	8	9	30	40	67
Port Vale	46	11	9	3	37	20	4	7	12	25	37	61
Portsmouth	46	9	8	6	40	34	6	8	9	22	31	61
Leicester C.	46	10	8	5	34	29	5	6	12	33	50	59
Hull City	46	7	8	8	27	31	7	8	8	31	34	58
Watford	46	11	6	6	41	28	3	9	11	17	32	57
Plymouth A.	46	9	8	6	30	23	5	5	13	28	40	55
Oxford Utd.	46	8	7	8	35	31	7	2	14	22	35	54
Brighton H.A.	46	10	6	7	28	27	5	3	15	28	45	54
Barnsley	46	7	9	7	22	23	6	6	11	27	48	54
W.B.A.	46	6	8	9	35	37	6	7	10	32	34	51
Middlesbrough	46	10	3	10	33	29	3	8	12	19	34	50
A.F.C. Bournemouth	46	8	6	9	30	31	4	6	13	27	45	48
Bradford City	46	9	6	8	26	24	0	8	15	18	44	40
Stoke C.	46	4	11	8	20	24	2	8	13	15	39	37

Key: Promoted teams in bold  
Relegated teams in Italics

**LUTON TOWN FOOTBALL CLUB**



## Barclays League Division Three

	P.	W.	Home		F.	A.	W.	Away		F.	A.	Pts.
			D.	L.				D.	L.			
Bristol Rov.	46	15	8	0	43	14	11	7	5	28	21	93
Bristol City	46	15	5	3	40	16	12	5	6	36	24	91
Notts. County	46	17	4	2	40	18	8	8	7	33	35	87
Tranmere R.	46	15	5	3	54	22	8	6	9	32	27	80
Bury	46	11	7	5	35	19	10	4	9	35	30	74
Bolton W.	46	12	7	4	32	19	6	8	9	27	29	69
Birmingham C.	46	10	7	6	33	19	8	5	10	27	40	66
Huddersfield T.	46	11	5	7	30	23	6	9	8	31	39	65
Rotherham Utd.	46	12	6	5	48	28	5	7	11	23	34	64
Reading	46	10	9	4	33	21	5	10	8	24	32	64
Shrewsbury T.	46	10	9	4	38	24	6	6	11	21	30	63
Crewe Alex	46	10	8	5	32	24	5	9	9	24	29	62
Brentford	46	11	4	8	41	31	7	3	13	25	35	61
Leyton Orient	46	9	6	8	28	24	7	4	12	24	32	58
Mansfield T.	46	13	2	8	34	25	3	5	15	16	40	55
Chester City	46	11	7	5	30	23	2	8	13	13	32	54
Swansea City	46	10	6	7	25	27	4	6	13	20	36	54
Wigan Ath.	46	10	6	7	29	22	3	8	12	19	42	53
Preston N.E.	46	10	7	6	42	30	4	3	16	23	49	52
Fullham	46	8	8	7	33	27	4	7	12	22	39	51
Cardiff C.	46	6	9	8	30	35	6	5	12	21	35	50
Northampton T.	46	7	7	9	27	31	4	7	12	24	37	47
Blackpool	46	8	6	9	29	33	2	10	11	20	40	46
Walsall	46	6	8	9	23	30	3	6	14	17	42	41

## Barclays League Division Four

	P.	W.	Home		F.	A.	W.	Away		F.	A.	Pts.
			D.	L.				D.	L.			
Exeter City	46	20	3	0	50	14	8	2	13	33	34	89
Grimsby T.	46	14	4	5	41	20	8	9	6	29	27	79
Southend U.	46	15	3	5	35	14	7	6	10	26	34	75
Stockport C.	46	13	6	4	45	27	8	5	10	23	35	74
Maidstone U.	46	14	4	5	49	21	8	3	12	28	40	73
Cambridge U.	46	14	3	6	45	30	7	7	9	31	36	73
Chesterfield	46	12	9	2	41	19	7	5	11	22	31	71
Carlisle U.	46	15	4	4	38	20	6	4	13	23	40	71
Peterborough	46	10	8	5	35	23	7	9	7	24	23	68
Lincoln C.	46	11	6	6	30	27	7	8	8	18	21	68
Scunthorpe	46	9	9	5	42	25	8	6	9	27	29	66
Rochdale	46	11	4	8	28	23	9	2	12	24	32	66
York City	46	10	5	8	29	24	6	11	6	26	29	64
Gillingham	46	9	8	6	28	21	8	3	12	18	27	62
Torquay	46	12	2	9	33	29	3	10	10	20	37	57
Burnley	46	6	10	7	19	18	8	4	11	26	37	56
Hereford	46	7	4	12	31	32	8	6	9	25	30	55
Scarborough	46	10	5	8	35	28	5	5	13	25	45	55
Hartlepool	46	12	4	7	45	33	3	6	14	21	55	55
Doncaster	46	7	7	9	29	29	7	2	14	24	31	51
Wrexham	46	8	8	7	28	28	5	4	14	23	39	51
Aldershot	46	8	7	8	28	26	4	7	12	21	43	50
Halifax	46	5	9	9	31	29	7	4	12	26	36	49
Colchester	46	9	3	11	26	25	2	7	14	22	50	43

Key: Promoted teams in bold  
Relegated teams in Italics

**LUTON TOWN FOOTBALL CLUB**





## Ovenden Papers Football Combination Final League Table Season 1989/90

	P.	W.	D.	L.	Goals For	Agst.	Pts.
Arsenal	38	26	6	6	84	51	84
Tottenham Hotspur	38	25	6	7	93	47	81
Chelsea	38	22	6	10	78	47	72
Millwall	38	20	11	7	58	36	71
Norwich City	38	20	7	11	66	41	67
Wimbledon	38	18	9	11	69	46	63
West Ham Utd.	38	18	7	13	83	59	61
Oxford Utd.	38	16	9	13	73	58	57
Brighton & Hove Albion	38	15	6	17	52	66	51
Portsmouth	38	12	13	13	47	57	49
Swindon Town	38	15	3	20	58	68	48
<b>Luton Town</b>	<b>38</b>	<b>13</b>	<b>8</b>	<b>17</b>	<b>68</b>	<b>70</b>	<b>47</b>
Q.P.R.	38	14	5	19	65	93	47
Crystal Palace	38	11	10	17	56	50	43
Southampton	38	10	12	16	45	58	42
Ipswich Town	38	12	5	21	60	75	41
Watford	38	11	8	19	59	79	41
Reading	38	11	8	19	64	86	41
Charlton Athletic	38	11	6	21	49	70	39
Fulham	38	4	7	27	25	95	19

## Reserves Appearances & Goalscorers

Football Combination				Beds Premier Cup				Football Combination				Beds Premier Cup			
Apps	Gls	Apps	Gls	Apps	Gls	Apps	Gls	Apps	Gls	Apps	Gls	Apps	Gls	Apps	Gls
ALLPRESS	23(2)	1	5(1)	—	—	McDONOUGH	6	—	3	2	—	—	—	—	—
BEAUMONT	3	—	1	—	—	McGONAGLE	4(6)	1	—	—	—	—	—	—	—
BROWN	3(4)	1	1(2)	—	—	NOGAN	19(3)	8	2(1)	3	—	—	—	—	—
CAMPBELL	1(1)	—	2	—	—	O'BRIEN	5(1)	1	1	—	—	—	—	—	—
COBB	22(6)	5	6(1)	3	—	O'SULLIVAN	7(6)	1	—	—	—	—	—	—	—
COOKE	17	4	2	1	—	PENBRIDGE	26(2)	1	4	1	—	—	—	—	—
COOPER	—(1)	—	1	—	—	PETTERSON	23	—	4	—	—	—	—	—	—
CRAWSHAW	16(5)	4	3	2	—	POUTCH	27(2)	1	4(1)	—	—	—	—	—	—
DOWIE	4	2	—	—	—	REES	18(2)	2	4	2	—	—	—	—	—
ELSTRUP	4	4	2	—	—	RICHARDS	5(1)	—	—	—	—	—	—	—	—
FARRELL	1	2	—	—	—	RODGER	5	—	—	—	—	—	—	—	—
GILLARD	1(3)	—	2	—	—	ROSENTHAL	2	3	—	—	—	—	—	—	—
GORMLEY	(2)	—	—	—	—	RUTHERFORD	(2)	—	—	—	—	—	—	—	—
GRAY	18	7	3	2	—	SALTON	14(4)	2	1(1)	—	—	—	—	—	—
HARVEY	8	3	—	—	—	SCOTT	32(1)	2	7	—	—	—	—	—	—
HUGHES	25(2)	2	5	3	—	SEALEY	15	—	3	—	—	—	—	—	—
HARFORD	1	1	—	—	—	SHANLEY	2(5)	—	1	—	—	—	—	—	—
JACKSON	8	—	2	—	—	TELFER	3(8)	1	2(2)	—	—	—	—	—	—
JAMES	9	1	1	—	—	TIGHE	19	3	3	—	—	—	—	—	—
JOHNSON M	11	2	2	—	—	THOMPSON	—	—	(1)	—	—	—	—	—	—
LAWFORD	(6)	—	—	—	—	WILLIAMS	11(1)	1	—	—	—	—	—	—	—

+ 2 own goals

**LUTON TOWN FOOTBALL CLUB**



## South East Counties Final League Tables

	P.	W.	D.	L.	For	Agst.	Pts.		P.	W.	D.	L.	For	Agst.	Pts.
<b>Division 1</b>								<b>Division 2</b>							
Tottenham Hotspur	30	19	7	4	76	29	45	Crystal Palace	30	23	5	2	74	23	51
Chelsea	30	17	8	5	59	22	42	Oxford United	30	19	4	7	69	34	42
Arsenal	30	17	6	7	66	35	40	Northampton Town	30	14	7	9	48	37	35
Watford	30	15	5	10	53	44	35	Southampton	30	13	8	9	41	37	34
West Ham Utd	30	15	4	11	62	52	34	Wimbledon	30	13	7	10	54	32	33
Charlton Athletic	30	15	4	11	48	42	34	<b>Luton Town</b>	<b>30</b>	<b>11</b>	<b>10</b>	<b>9</b>	<b>42</b>	<b>47</b>	<b>32</b>
Ipswich	30	13	4	13	54	57	30	Brighton & Hove Albion	30	13	4	13	45	39	30
Queens Park Rangers	30	12	7	11	44	45	31	Colchester United	30	14	2	14	48	48	30
Gillingham	30	11	6	13	62	63	28	Bristol Rovers	30	14	2	14	51	60	30
Millwall	30	9	10	11	42	45	28	Reading	30	12	5	13	43	38	29
Norwich City	30	10	8	12	33	42	28	Bristol City	30	13	3	14	43	40	29
Leyton Orient	30	10	6	14	47	57	26	A.F.C. Bournemouth	30	10	7	13	45	47	27
Portsmouth	30	10	6	14	41	55	26	Brentford	30	10	6	14	47	51	26
Cambridge United	30	7	9	14	43	66	23	Tottenham Hotspur	30	10	2	18	38	57	22
Southend United	30	7	6	17	44	66	20	Swindon	30	9	4	17	37	57	22
Fulham	30	2	6	22	20	74	10	Aldershot	30	3	2	25	26	104	8

## Youth Team Appearances and Goalscorers

	S.E.C. League Apps	Gls	S.E.C. League Cup Apps	Gls	S.J.F.C. Apps	Gls		S.E.C. League Apps	Gls	S.E.C. League Cup Apps	Gls	S.J.F.C. Apps	Gls
BRADING	—	—	1	—	1	—	McGILL	20(1)	—	5	—	3	—
BROWN	20(3)	9	5	2	3	—	McGONAGLE	24	3	4	1	3	—
CAMPBELL J	25(3)	6	3	1	2	—	MELDRUM	2(1)	—	—	—	—	—
CAMPBELL M	1(1)	—	—	—	—	—	MURRAY	3(7)	1	—	—	—	—
CARTER	1(2)	—	—	—	—	—	NEWMAN	3(1)	1	—	—	—	—
COOPER	26	2	2(1)	—	2	—	NOLAN	5(2)	—	1(1)	—	1	—
DENHAM	1	—	—	—	—	—	O'SULLIVAN	16(1)	3	5	1	3	—
DIBLEY	1(8)	—	—	—	—	—	RICHARDS	5	—	—	—	—	—
ELLIOTT	1	—	—	—	—	—	ROGERS	4(1)	—	(1)	—	1	—
GILLARD	11(1)	3	3	—	1	—	RUTHERFORD	8(7)	2	2(1)	1	2	—
GORMLEY	20(6)	6	3(2)	2	1(2)	1	SALTON	19	1	3	1	2	—
HANCOCK	13	—	1	—	—	—	SUTTON	3(1)	—	—	—	—	—
HAWKES	1	—	—	—	—	—	TELFER	23	—	5	1	3	—
HEATH	(1)	—	—	—	—	—	TILLY	—	—	(1)	—	—	—
HOLTHAM	1	—	—	—	—	—	THOMPSON	22(2)	1	1(2)	—	(2)	—
JACKSON	17	3	5	1	3	1	UDDEN	1	—	—	—	—	—
KENNY	1	—	—	—	—	—	WATKISS	16	—	3	—	2	—
LAWFORD	15(8)	1	3(1)	1	(2)	—	WOODS	1	—	—	—	—	—

SEC = South East Counties  
SJFC = Southern Junior Floodlit Cup

**LUTON TOWN FOOTBALL CLUB**





1990-1991



LUTON TOWN FOOTBALL CLUB



1990-1991

## Barclays' Junior Hatters Club By Bev Tyler



One of the happiest aspects in the progressive development of Luton Town has been the success of the Junior Hatters Club—an exclusive opportunity for young fans. It is the envy of many other league clubs.

It has grown from strength to strength over the last few years with last year's membership rising to more than 3,000.

The Junior Hatters Club, under the guidance of Luton Town Football Club, is sponsored by Barclays Bank and offers a great chance for boys and girls under 16 years of age to participate in the active support of the team and the club.

The aims of the club are to promote young support for the team and the club, and to foster a strong link between Junior Club members and Luton Town.

Members have a unique opportunity to meet many of the first team players, but, most importantly, the club members are able to watch home matches in the comfort and safety of the family enclosure.

Members enjoy a chance to be the team's mascot for home matches or to be one of four escorts for the mascot on the day.

A full replica kit is provided for each lucky member whose name is drawn from the mascot and escorts' draw each match during the season.

The kit is his or hers to keep as a souvenir to remind the mascot of a great day had at Luton Town.

Some of the draws are carried out at Barclays Bank in George Street. The Bank runs a competition on the day of the draw as well as through the season. In fact, this season the club will be running a number of competitions with lots of prizes for you to win at each home game.

Each year the club is looked after by a leading Luton Town player who acts as the club's president. Last year Kingsley Black was our president. He gave the club some tremendous support throughout the year and a big thank you goes to Kingsley for his efforts.

The new president for this season is Jason Rees. Jason played a big part in our campaign for survival in the First Division at the end of last season. He has played for Wales in the under-21 team and he has the chance to be a full international player.

Each year the club has a Christmas Party for the Junior Hatters. This is well supported by all the Luton Town players. At the party, there is a disco and party games with lots of prizes to be won, and each Junior who attends the party has a present from Father Christmas to take home.

The Juniors go to some of the away matches and play football with the Junior Supporters of rival clubs. This is done at home matches, as well as away, and the Juniors go to watch the first team play football in the afternoon and give their team some vocal support. This makes it a good day out for the Junior supporter. Last season we visited Arsenal, Charlton Athletic, Chelsea, Crystal Palace, Norwich City and Southampton for matches.

This season we hope to visit a number of the clubs in the First Division, and make friends with their Junior supporters and help promote friendship in football.

The benefits of being a member of the Junior Hatters Club also include a birthday card on his or her birthday for each Junior. Juniors are also offered special family discounts on season tickets. This season Juniors can gain a special family discount of 20% off season tickets purchased to qualify. The minimum requirement will be at least two adults and a juvenile under 16 years, all of whom must be from the same family. This offer applies to the Oak Road Stand only.

As our football club is a members-only club, every Junior who joins is automatically a Junior Hatter either as a member or a season ticket holder. If you are not a member and wish to be one you can do so by calling into the ticket office in Kenilworth Road and fill in a form. The cost is just £1.

Members can catch up with all the Junior Hatters news and quizzes in their own column in the home match programme.



LUTON TOWN FOOTBALL CLUB





## 1990-1991

### A brief history of Luton Town Football Club

- 1885: Luton Town Football Club formed by the amalgamation of Wanderers and Excelsior, the two major clubs in the town at the time. The club's first ground is the Excelsior's at Dallow Road and the club's first colours are pink and navy blue with matching caps.
- 1890: Luton Town become arguably the first team in southern England to turn professional by paying top players their expenses and seven years later, in 1897, Luton Town becomes a limited company and joins the Football League for the first time. The club also moves to a new ground at Dunstable Road.
- 1900: The club returns to the Southern League after an expensive and painful education among the Second Division clubs and in 1905 moves again to Kenilworth Road.
- 1912: End of the club's worst season in which they are relegated to the Southern League Second Division and during which full-back Sammy Wightman dies after a match. Within two years, however, the club gained promotion and returned to the top division before the outbreak of war.
- 1920: After the war, the club rejoined the Football League and played in Division Three. One year later, the club joined the new Division Three (South).
- 1936: Joe Payne scored 10 goals in one match against Bristol Rovers to establish a club and national record never likely to be equalled. One year later, Payne hit 55 goals in a season as the Town won promotion to the Second Division in a record-breaking season.
- 1955: After a long break caused by the Second World War, the club resumed life in the Second Division and won promotion to the First Division by finishing second.
- 1959: Luton Town played Nottingham Forest in the FA Cup Final at Wembley, losing 2-1 to a team reduced to 10 men by an early injury to Roy Dwight. Dave Pacey scored the Luton goal.
- 1960: A poor season ends with relegation from the First Division to the Second and is followed in 1963, on a downhill slide from Wembley, with further relegation from the Second to the Third Division. In 1965, the slump ends when the Town fall to the Fourth Division.
- 1968: The revival began with a championship triumph at the end of a successful Fourth Division campaign under Allan Brown's management. Two years later, under Alec Stock, the club win promotion to the Second Division again.
- 1974: After a spell of uncertainty, the club bounces back and gains promotion to the First Division under Harry Haslam with a team including Jim Ryan and John Faulkner.
- 1975: Relegation after only one season at the top.
- 1982: After another insecure spell, particularly financially, the club regains its place in the First Division with a title-winning season under David Pleat.
- 1983: Serious unrest over the club's future location nearly undermines a promising team, but the club recovers and by 1985 has a strong team which reaches the FA Cup semi-finals.
- 1988: Established as a First Division club, Luton Town go to Wembley and win their first major trophy, the Littlewoods Cup, with a heart-stopping 3-2 win over Arsenal. Brian Stein scores twice and Danny Wilson once in the greatest hour in the club's history.
- 1989: Back to Wembley to defend the trophy, but defeated by Nottingham Forest.
- 1990: With the excellent team of the mid-1980's ageing, the team escape from the threat of relegation with a memorable last-day victory at Derby County.

**LUTON TOWN FOOTBALL CLUB**



## Luton Town Supporters' Club Players of the Year 1989-1990



### Players' Player

**John Dreyer**



### Young Player

**Kurt Nogan**



### Supporters' Club Player of the Year and Bobbers' Club Player of the Year

**Tim Breacker**



**LUTON TOWN FOOTBALL CLUB**





## All Time League Record

### Division One

Season	P.	W.	Home D.	L.	F.	A.	W.	D.	Away L.	F.	A.	Pts.	Position (Number in Division)
1955/56	42	12	4	5	44	27	5	4	12	22	37	42	10 (22)
1956/57	42	10	4	7	32	26	4	5	12	26	50	37	16 (22)
1957/58	42	13	3	5	45	22	6	3	12	24	41	44	8 (22)
1958/59	42	11	6	4	50	26	1	7	13	18	45	37	17 (22)
1959/60	42	6	5	10	25	29	3	7	11	25	44	30	22 (22)
1974/75	42	8	6	7	27	26	3	5	13	20	39	33	20 (22)
1982/83	42	7	7	7	34	33	5	6	10	31	51	49	18 (22)
1983/84	42	7	5	9	30	33	7	4	10	23	33	51	16 (22)
1984/85	42	12	5	4	40	22	3	4	14	17	39	54	13 (22)
1985/86	42	12	6	3	37	15	6	6	9	24	29	66	9 (22)
1986/87	42	14	5	2	29	13	4	7	10	18	32	66	7 (22)
1987/88	40	11	6	3	40	21	3	5	12	17	37	53	9 (21)
1988/89	38	8	6	5	32	21	2	5	12	10	31	41	16 (20)
1989/90	38	8	8	3	24	18	2	5	12	19	39	43	17 (20)
	578	139	76	74	489	332	54	73	162	294	547		

### Division Two

1897/98	30	10	2	3	50	13	3	2	10	18	37	30	8 (16)
1898/99	34	8	1	8	37	31	2	2	13	14	64	23	15 (18)
1899/00	34	5	3	9	25	25	0	5	12	15	50	18	17 (18)
1937/38	42	10	6	5	53	36	5	4	12	36	50	40	12 (22)
1938/39	42	13	4	4	47	27	9	1	11	35	39	49	7 (22)
1946/47	42	13	4	4	50	29	3	3	15	21	44	39	13 (22)
1947/48	42	8	8	5	31	25	6	4	11	25	34	40	13 (22)
1948/49	42	11	6	4	32	16	3	6	12	23	41	40	10 (22)
1949/50	42	8	9	4	28	22	2	9	10	13	29	38	17 (22)
1950/51	42	7	9	5	34	23	2	5	14	23	47	32	19 (22)
1951/52	42	9	7	5	46	35	7	5	9	31	43	44	8 (22)
1952/53	42	15	1	5	53	17	7	7	7	31	32	52	3 (22)
1953/54	42	11	7	3	36	23	7	5	9	28	36	48	6 (22)
1954/55	42	18	2	1	55	18	5	6	10	33	35	54	2 (22)
1960/61	42	13	5	3	48	27	2	4	15	23	52	39	13 (22)
1961/62	42	12	1	8	44	37	5	4	12	25	34	39	13 (22)
1962/63	42	10	4	7	45	40	1	3	17	16	44	29	22 (22)
1970/71	42	12	7	2	40	18	6	6	9	22	25	49	6 (22)
1971/72	42	7	8	6	25	24	3	10	8	18	24	38	13 (22)
1972/73	42	6	9	6	24	23	9	2	10	20	30	41	12 (22)
1973/74	42	12	5	4	42	25	7	7	7	22	26	50	2 (22)
1975/76	42	13	6	2	38	15	6	1	1	23	36	48	7 (22)
1976/77	42	13	5	3	39	17	8	1	12	28	31	48	6 (22)
1977/78	42	11	4	6	35	20	3	6	12	19	32	38	13 (22)
1978/79	42	11	5	5	46	24	2	5	14	14	33	36	18 (22)
1979/80	42	9	10	2	36	17	7	7	7	30	28	49	6 (22)
1980/81	42	10	6	5	35	23	8	6	7	26	23	48	5 (22)
1981/82	42	16	3	2	48	19	9	10	2	38	27	88	1 (22)
	1148	301	147	126	1122	669	137	139	298	670	1026		

LUTON TOWN FOOTBALL CLUB



## All Time League Record

### Division Three

Season	P.	W.	Home D.	L.	F.	A.	W.	D.	Away L.	F.	A.	Pts.	Position (Number in Division)
1920/21	42	14	6	1	51	15	2	6	13	10	41	44	9 (22)
1921/22	42	16	2	3	47	9	6	6	9	17	26	52	4 (22)
1922/23	42	14	4	3	47	18	7	3	11	21	31	49	5 (22)
1923/24	42	11	7	3	35	19	5	7	9	15	25	46	7 (22)
1924/25	42	9	10	2	34	15	1	7	13	15	42	37	17 (22)
1925/26	42	16	4	1	60	25	2	3	16	20	50	43	7 (22)
1926/27	42	12	9	0	48	19	3	5	13	20	47	44	8 (22)
1927/28	42	13	5	3	56	27	3	2	16	38	60	39	13 (22)
1928/29	42	16	3	2	64	28	3	8	10	25	45	49	7 (22)
1929/30	42	13	4	4	42	25	1	8	12	22	53	40	13 (22)
1930/31	42	15	3	3	61	17	4	5	12	15	34	46	7 (22)
1931/32	42	16	1	4	62	25	4	6	11	33	45	47	6 (22)
1932/33	42	12	8	1	60	32	1	5	15	18	46	39	14 (22)
1933/34	42	14	3	4	55	28	7	7	7	28	33	52	6 (22)
1934/35	42	12	7	2	60	23	7	5	9	32	37	50	4 (22)
1935/36	42	13	6	2	56	20	9	6	6	25	25	56	2 (22)
1936/37	42	19	1	1	69	16	8	3	10	34	37	58	1 (22)
1963/64	46	12	2	9	42	41	4	8	11	22	39	42	18 (24)
1964/65	46	6	8	9	32	36	5	3	15	19	58	33	21 (24)
1968/69	46	20	3	0	57	14	5	8	10	17	24	61	3 (24)
1969/70	46	13	8	2	46	15	10	6	7	31	28	60	2 (24)
	898	286	104	59	1084	467	97	117	235	477	826		

### Division Four

1965/66	46	19	2	2	65	27	5	6	12	25	43	56	6 (24)
1966/67	46	15	5	3	47	23	1	4	18	12	50	41	17 (24)
1967/68	46	19	3	1	55	16	8	9	6	32	28	66	1 (24)
	138	53	10	6	167	66	14	19	36	69	121		

### Grand Totals

Division One	578	139	76	74	489	332	54	73	162	294	547	14 Seasons
Division Two	1148	301	147	126	1122	669	137	139	298	670	1026	28 Seasons
Division Three	898	286	104	59	1084	467	97	117	235	477	826	21 Seasons
Division Four	138	53	10	6	167	66	14	19	36	69	121	3 Seasons
	2762	779	337	265	2862	1534	302	348	731	1510	2520	66 Seasons

Division	P.	W.	D.	L.	F.	A.
Division One	578	193	149	236	783	879
Division Two	1148	438	286	424	1792	1695
Division Three	898	383	221	294	1561	1293
Division Four	138	67	29	42	236	187
	2762	1081	685	996	4372	4054

1990/91 Season will see Luton Town's  
 1) 600th Division One game  
 2) 200th Division One win  
 3) 800th Division One goal  
 4) 150th Division One home win  
 5) 500th Division One home goal  
 6) 300th Division One away goal  
 7) 2800th Football League game  
 8) 1000th Football League defeat

LUTON TOWN FOOTBALL CLUB







## South East Counties Fixtures 1990/1991



1990

Sat	Aug	25	Bristol City	A		
Sat	Sep	1	Maidstone United	H	11.00 am	
Sat	Sep	8	Swindon Town	H	11.00 am	
Mon	Sep	10	Birmingham City	H	7.30 pm	S.J.F.L.
Sat	Sep	15	Oxford United	H	11.00 am	League Cup 1
Sat	Sep	22	Bournemouth	A		
Sat	Sep	29	Aldershot	H	11.00 am	
Sat	Oct	6	Oxford United	A		
Sat	Oct	13	Brentford	A		
Sat	Oct	20				League Cup 2
Sat	Oct	27	Crystal Palace	H	12.30 pm	
Sat	Nov	3	Tottenham Hotspur	H	11.00 am	
Sat	Nov	10	Reading	H	11.00 am	
Sat	Nov	17				
Sat	Nov	24	Bristol Rovers	A		
Sat	Dec	1	Southampton	A		
Sat	Dec	8	Wimbledon	A		
Sat	Dec	15				League Cup 3
Sat	Dec	22	Brighton & Hove Albion	H	11.00 am	

1991

Sat	Jan	5	Bristol City	H	11.00 am	
Sat	Jan	12	Maidstone United	A		
Sat	Jan	19	Swindon Town	A		
Sat	Jan	26	Bournemouth	H	11.00 am	
Sat	Feb	2	Aldershot	A		
Sat	Feb	9	Oxford United	H	11.00 am	
Sat	Feb	16	Brentford	H	11.00 am	
Sat	Feb	23	Crystal Palace	A		
Sat	Mar	2	Tottenham Hotspur	A		
Sat	Mar	9	Reading	A		
Sat	Mar	16				
Sat	Mar	23	Bristol Rovers	H	11.00 am	
Sat	Mar	30	Southampton	H	11.00 am	
Sat	Apr	6	Wimbledon	H	11.00 am	
Sat	Apr	13	Brighton & Hove Albion	A		

LUTON TOWN FOOTBALL CLUB



## Ovenden Papers Football Combination Fixtures 1990/1991

1990

Wed	Aug	29	Fulham	A	2.00 pm	
Sat	Sep	1	Southampton	H	2.00 pm	
Tue	Sep	11	Chelsea	A	2.00 pm	
Sat	Sep	15	Watford	H	2.00 pm	
Tue	Sep	25	Charlton Athletic	A	7.00 pm	
Sat	Sep	29	West Ham United	H	2.00 pm	
Sat	Oct	6	Wimbledon	A	3.00 pm	
Wed	Oct	10	Brighton & Hove Albion	A	7.15 pm	
Sat	Oct	13	Reading	H	2.00 pm	
Sat	Oct	20	Chelsea	H	2.00 pm	
Sat	Oct	27	Portsmouth	A	2.00 pm	
Sat	Nov	3	Crystal Palace	H	2.00 pm	
Sat	Nov	10	Millwall	H	2.00 pm	
Tue	Nov	20	Queens Park Rangers	A	2.00 pm	
Wed	Nov	28	Swindon Town	A	7.00 pm	
Sat	Dec	1	Oxford United	H	2.00 pm	
Wed	Dec	12	Reading	A	2.00 pm	
Sat	Dec	15	Wimbledon	H	2.00 pm	
Sat	Dec	22	Charlton Athletic	H	2.00 pm	

1991

Sat	Jan	5	Tottenham Hotspur	H	2.00 pm	
Fri	Jan	18	Norwich City	A	7.30 pm	
Tue	Jan	22	Portsmouth	H	7.30 pm	
Sat	Jan	26	Queens Park Rangers	H	2.00 pm	
Wed	Feb	6	Oxford United	A	7.30 pm	
Sat	Feb	9	Arsenal	H	2.00 pm	
Sat	Feb	16	Fulham	H	2.00 pm	
Sat	Feb	23	Tottenham Hotspur	A	2.00 pm	
Tue	Mar	5	Watford	A	7.30 pm	
Sat	Mar	9	Swindon Town	H	2.00 pm	
Wed	Mar	20	Crystal Palace	A	7.30 pm	
Sat	Mar	23	Ipswich Town	H	2.00 pm	
Sat	Mar	30	Southampton	A	3.00 pm	
Mon	Apr	8	Millwall	A	2.00 pm	
Tue	Apr	16	Norwich	H	7.30 pm	
Sat	Apr	20	Ipswich Town	A	3.00 pm	
Tue	Apr	23	Arsenal	A	7.00 pm	
Thur	May	2	West Ham United	A	7.00 pm	
Sat	May	4	Brighton & Hove Albion	H	2.00 pm	

LUTON TOWN FOOTBALL CLUB





## Barclays League Fixtures Division I 1990-1991



1990

Sat	Aug 25	Crystal Palace	H	
Wed	Aug 29	Arsenal	A	K.O. 7.45 pm
Sat	Sep 1	Southampton	A	
Tue	Sep 4	Manchester United	H	K.O. 7.45 pm
Sat	Sep 8	Leeds United	H	
Sat	Sep 15	Queens Park Rangers	A	
Sat	Sep 22	Coventry City	H	
Wed	Sep 26			League Cup 2(1)
Sat	Sep 29	Norwich City	A	
Wed	Oct 10			League Cup 2(2)
Sat	Oct 20	Sunderland	A	
Sat	Oct 27	Everton	H	
Wed	Oct 31			League Cup 3
Sat	Nov 3	Derby County	A	
Sat	Nov 10	Liverpool	A	
Sat	Nov 17	Manchester City	H	F.A. Cup 1
Wed	Nov 21			Z.D.S. Cup 1
Sat	Nov 24	Aston Villa	H	
Wed	Nov 28			League Cup 4
Sat	Dec 1	Nottingham Forest	A	
Sat	Dec 8	Arsenal	H	F.A. Cup 2
Sun	Dec 16	Crystal Palace	A	
Wed	Dec 19			Z.D.S. Cup 2
Sat	Dec 22	Tottenham Hotspur	A	
Wed	Dec 26	Sheffield United	H	K.O. 11.30 am
Sat	Dec 29	Chelsea	H	

1991

Tue	Jan 1	Wimbledon	A	
Sat	Jan 5			F.A. Cup 3
Sat	Jan 12	Southampton	H	
Wed	Jan 16			League Cup 5
Sat	Jan 19	Leeds United	A	
Wed	Jan 23			Z.D.S. Cup Area Qtr Final
Sat	Jan 26			F.A. Cup 4
Sat	Feb 2	Queens Park Rangers	H	
Sat	Feb 9	Coventry City	A	
Wed	Feb 13			L. Cup S/F (1) Z.D.S. Area S/F
Sat	Feb 16	Manchester City	A	F.A. Cup 5
Sat	Feb 23	Liverpool	H	
Wed	Feb 27			L. Cup S/F (2)
Sat	Mar 2	Nottingham Forest	H	
Wed	Mar 6			Z.D.S. Cup Area Final (1)
Sat	Mar 9	Aston Villa	A	F.A. Cup 6
Sat	Mar 16	Norwich City	H	
Wed	Mar 20			Z.D.S. Cup Area Final (2)
Sat	Mar 23	Manchester United	A	
Sat	Mar 30	Sheffield United	A	
Mon	Apr 1	Tottenham Hotspur	H	
Sat	Apr 6	Chelsea	A	
Sun	Apr 7			Z.D.S. Cup Final
Sat	Apr 13	Wimbledon	H	F.A. Cup Semi-Finals
Sat	Apr 20	Sunderland	H	
Sun	Apr 21			League Cup Final
Sat	May 4	Everton	A	
Sat	May 11	Derby County	H	
Sat	May 18			F.A. Cup Final

NOTE: All matches are 3pm kick-off unless otherwise stated.

**LUTON TOWN FOOTBALL CLUB**



## BRITAIN'S LEADING POWER TOOL SPECIALISTS

For a fully comprehensive stock of tools and accessories, expert advice, service and repairs, no one can beat Tek Power Tools for quality, professional attention and value for money.

**Why not take advantage of the fact that  
your local power tool specialists are also  
Britain's best?**

Tek Power Tools Ltd, Manor Road, Luton LU1 3HY  
Telephone (0582) 417123 Telex 826109 Fax (0582) 454202



