



# LUTON TOWN SUPPORTERS CLUB HATTERS NEWS

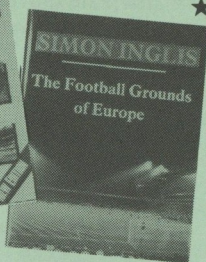
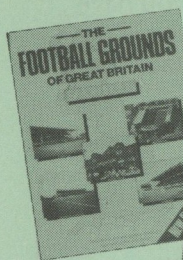
*"VOICE OF THE FANS"*

October 1990

Issue No. 7

## LUTON TOWN SUPPORTERS CLUB "EXCLUSIVE"

LOOK WHO'S VISITING US ...



### ★ SIMON INGLIS –

Author & Journalist of  
the popular books  
Football Grounds of  
Great Britain & Europe



### ★ GORDON TAYLOR –

Professional Footballers'  
Association Chief Executive.

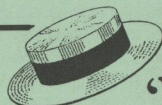
KENILWORTH ROAD  
FAVOURITES ...

### ★ KIRK STEPHENS 'BASHER'

Former Hatters Full-Back  
& ★ JAKE FINDLAY  
Former Hatters Goalkeeper

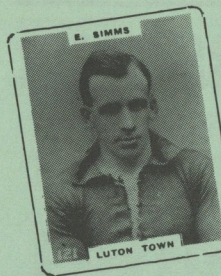


**PLUS Many More!**



Read our NEW Series  
'SEASON'S TO SAVOUR'

and find out about  
these two  
former Luton  
players &  
Many More!

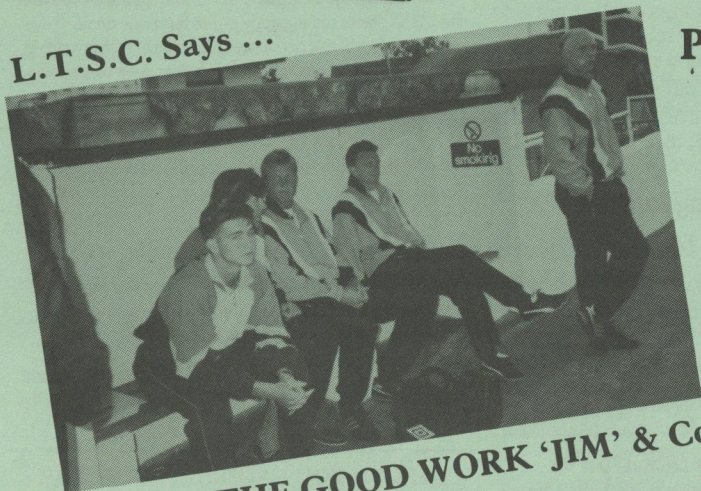


'WELCOME'  
to our New



Chairman and Director  
**PETER NELKIN & DAVID KOHLER**

L.T.S.C. Says ...



**KEEP UP THE GOOD WORK 'JIM' & Co.**



What is the Ex-Chelsea & England Goalkeeper  
Peter Bonetti and these Ladies Up to?

## MAKE CLOSER LINKS WITH THE CLUB



# HATTERS NEWS *VOICE OF THE FANS*

## Message from the Supporters Club Chairperson

Dear Supporter,

To those of you who have just joined us, welcome, and if you have renewed again this year, thankyou. I foresee another very busy season ahead of us. We do hope to organise a wider variety of club activities this year, although this does take a great deal of time and effort.

Whilst handing out leaflets at the Leeds match, many of the committee members were approached by supporters who expressed their concern over the fact that they have difficulty in contacting the Supporters Club. I can only say that we do answer all mail if addressed to us c/o the Football Club and you can in fact leave a message with Lita on the Luton FC switchboard. We as yet, do not have our own phone and all the work we undertake is in our spare time, as we all have full-time jobs.

We do have L.T.S.C. football team run by Phillip Francis, they mainly play friendly matches against other supporters clubs. If you are interested please drop your details in the post to Phil.

We are at the moment trying to get a Ladies Football team organised. So if you are under 65 and fit, and fancy the odd game of football, we'd like to hear from you.

Tom Hunt is getting together a rota of supporters who aren't shy to speak on the radio and would enjoy the chance to give their views of a Luton match on Radio Bedfordshire. If you fit this would you write to Tom enclosing an evening phone number and he'll be in touch with you.

As ever we do welcome any suggestions you have about guest speakers etc. Just drop us a line and we'll try our best. For forthcoming events see the 'Supporters Club Newdesk'.

Finally, although it has been said many times before, the young team we have at present needs all your support so, get behind the Hatters and in return they will entertain you with the type of football you will always enjoy.

*Pam*

**UP THE HATTERS!**

**Pam Gray – LTSC Chairperson**



## ...SUPPORTERS CLUB NEWSDESK...SUPPORTERS CLUB

### Social Arrangements

Below you will see some of the events we have coming up with many more which we have to confirm dates for. I will remind you that ALL are by ticket only and restricted to supporters club members ONLY.

Don't forget to obtain your tickets early to avoid disappointment.

TICKETS ARE AVAILABLE IN THREE WAYS.

- via the post — to LTSC, c/o Luton Town F.C., 1 Maple Road, Kenilworth Stadium, Luton, Beds. LU4 8AW.
- from our Supporters Club Kiosk AFTER ANY MATCH. (To the side of the Main Stand by refreshment area.)
- and at all our events subject to availability on the night.

### FORTHCOMING EVENTS:

**11th October 1990** Guest Speaker Evening  
Simon Inglis (Author & Journalist of the very popular Books Football Grounds of G.B. and Europe)  
at the Joe Payne Lounge, LTFC, Maple Road, from 7.30 pm £2.00

**8th November 1990** Guest Speaker Evening  
Ex-Hatter Player Kirk 'Basher' Stephens and to be confirmed, Jake Findlay at the Joe Payne Lounge, LTFC, Maple Road, from 7.30 pm £2.00

MORE EVENTS TO BE CONFIRMED

### OTHER NEWS ...

#### LTSC ITEMS FOR SALE

With Christmas just around the corner how do you fancy buying any of the following items?  
**L.T.S.C. T-SHIRTS at £6.50 each** (Good quality cotton/polyester with our logo on the front). At present we only have one size, X-Large, which will fit the average fashion conscious supporter.  
**L.T.S.C. PENS at 30p** (That's good value!)  
**L.T.S.C. BADGES** (If you have lost yours or just require an additional one, then for £1.50 its all yours.)

#### Book for the Travelling Supporter

The Supporters' Guide to Football League Clubs 1991 at £3.95 (good value)

You can obtain any of the above items from the LTSC Kiosk (to the side of the Main Stand AFTER any home match),  
OR by post to: LTSC (Sale Items), c/o LTFC, Kenilworth Road, 1 Maple Road, Luton, Beds. LU4 8AW. (PLEASE ADD TO THE PRICE P & P)

#### 5% DISCOUNT ... 5% DISCOUNT ...

Just a reminder to all members that joining us you can enjoy the benefit of having 5% discount off all purchases at the Luton Town Sports & Souvenir Shops in Oak Road and Kenilworth Road.

So, get down there for those early Xmas presents!

### Luton Town Supporters Club F.C. Report

Having played our first match of the season with a team from the Leeds United F.C. Supporters Club (Leeds University Branch) we found it a very enjoyable match even though we lost 1-4 at the playing fields of Icknield High School, Luton.

Both teams played the game with a lot of spirit and even with the L.U.S.C. team scoring early on we felt as the game progressed we would get back into the match. With us holding out to 1-0 with seconds to go before half-time we conceded a second goal, making it 2-0.

It must have been Phil Francis the LTSC team manager's stiff team talk at half-time that did the work because we looked a different team second-half, and with 10-15 minutes gone we scored, and eventually held our own until the last ten minutes when the game was put beyond our reach by Leeds scoring two quick goals.

Anyway all the players enjoyed their hour & half of stardom, wearing the New Luton Town Kit, and cannot wait for the next game, which we hope will be soon. (See future Luton Town programmes or Hatters News for further details.)

P.S. If all you players could put a couple of quid in the hat each you may like to buy me a new pair of glasses, as stated by the reaction of our goalkeeper to the third goal!

#### COME ON YOU LADIES — SHOW THE MEN WHAT YOU CAN DO!!!

Calling all Ladies who wish to make up a new LTSC Ladies team. Interested, then contact Pam Gray, c/o LTFC at the usual address for further details *on training sessions!!*

### SUPPORTERS CLUB NEWSDESK Continues



### CHARITY MATCH

With the Luton Town First Team having two blank consecutive Saturdays this month, they have arranged a Charity friendly match over the Irish Sea in N. Ireland.

They are to play a top amateur club called Crewe United based in Lisburn, County Antrim. on the 12th October 1990. They are hoping to break their attendance record with the first ever visit of a UK First Division team to play an amateur Irish team.

All proceeds are to go to the Park View Special School in Lisburn.

### COACHES TO ENGLAND MATCHES AT WEMBLEY

One of our intentions is to run coaches to all England Home international matches at Wembley.

With the forthcoming England v Poland match too late to organise, we are hoping to run a coach to the next match early in 1991. If you are interested and wish to take up the advantage of paying less for your seats with a discount block booking, then contact our Club Treasurer — Mark Chapman via the LTSC at the usual address and he will forward the necessary information to you.

## FSA BACK NATIONAL CAMPAIGN AGAINST ALL-SEATER STADIA (SUPPORTERS CLUB TO SUPPORT THIS INITIATIVE)

On 2nd June 1990 John Pyper and myself attended the Fifth Annual Conference of the Football Supporters Association (FSA) at Birmingham University. It was an interesting and informative day listening to the debates which took place on the 33 motions put forward. An attendance of approximately 300 delegates from throughout the Country and representing every level of League and non-League support gave a good cross-section of views.

Of all the motions, however, by far the most popular and important debate took place on the Taylor Report recommendation for all-seater stadiums. There was widespread support for the view that supporters should have a choice whether to sit or stand at football matches. The discussions concentrated on two main concerns.

Firstly, for smaller clubs supporters the worry was that their clubs already had seats available for nearly, if not all, their League games, and since these were not being used as a matter of choice, it was not understood why additional seats needed to be provided. It was felt that it was inevitable that smaller clubs would lose support, since not all standing spectators would wish to sit, thereby leading to price increases to cover this shortfall in gate receipts and a spiralling problem of this nature.

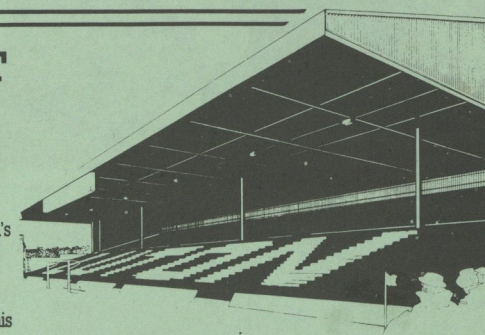
However, for supporters of First Division clubs the concern was that all-seater stadia, inevitably causing reduced capacities, would deny supporters the chance to see their team play the more attractive and popular clubs since, although average League attendances may not be close to existing or proposed capacities, matches against these clubs, as well as local derbies, were nearly always close to being full at present.

Speakers were, however, pragmatic in their comments as to the likelihood of persuading the League to completely go against the

Taylor recommendations, especially as the leading clubs, wishing to return to European competition and aware of UEFA's requirements for all-seater stadia for these matches, would probably support the recommendation. Indeed the point was made that Liverpool had discussed, before the Hillsborough tragedy, making their ground all-seater despite the fact that this would mean only existing season ticket holders would be able to attend, thereby denying any casual, on the day or away support.

Nevertheless, it was felt that if First Division clubs wished to, or had, to comply with the recommendations other League Clubs should be allowed to decide on the proportion of seating to standing accommodation on an individual club basis in consultations and agreement with its supporters and the police. Indeed, there was some cynicism that the all-seater proposals were only relevant to the clubs looking forward and hoping to compete in a future European Super League competition, which many felt was an inevitability. For many supporters the Coventry City experience of declining support following their all-seater stadium experiment was the "writing on the wall". More than one speaker raised the concern that football, and sport in general, was rapidly progressing along a route where less and less people were expected to pay more and more to watch "live" sporting occasions, whilst the majority would only be able to afford to watch matches on TV (as happens in USA) and that this line of thinking would be detrimental to the long term well being and support for football.

Thus, following a long debate in which many different views were aired (the speakers who spoke against the motion mainly being concerned that the FSA should try to look positively toward influencing the clubs to provide seating of a higher standard "than



the plastic chairs without backs which seem to be designed for five year olds and which provide no leg room if you are over 5'6", which would probably be provided if the recommendations became law) the following resolution was passed:

"The FSA agrees with the findings of Lord Justice Taylor's Technical Working Party that standing accommodation is not intrinsically unsafe. We therefore believe that legislation imposing all-seater stadia is not in the interests of football supporters. It follows that the FSA commits itself as a priority to mounting a high profile mass campaign amongst football supporters and the wider public in favour of building new, safe standing areas alongside new, safe seating areas at Football League grounds."

No doubt the 50%+ of our membership who presently stand on the Kenilworth Road terrace would wish the Committee to represent your interest. Therefore, on behalf of the Committee, I will be actively involved in the future progress of this resolution and campaign and will be keeping you updated on any further developments in this regard through future editions of "Hatters News".

Yours in Sport,

JOHN CHAPMAN (LTSC Committee Member)



### LUTON TOWN SUPPORTERS CLUB

## LADIES DAY

by PAM GRAY

"Ladies Day" was an idea that sprung to mind during the World Cup. A great number of friends I have, who are not normally at all interested in football, suddenly became telly addicts. It even became the main topic of conversation in our staff room. Myself, I find it hard to understand why people are interested in an English football team, and yet show no interest in our local first division side. So I set myself a little task in trying to sway the women folk of Luton to come along to Kenilworth Road and see what it's all about. With the help of Mandy Nelkin, Louise and Tabatha Preece and Karen and Dawn Beaumont, plus Beryl, Marilyn and Pat fellow committee members, we entertained approximately thirty ladies.

We started the afternoon with drinks in the Joe Payne lounge and a welcome from

Peter Nelkin, our Chairman. Then in the safe hands of Bill Tomlins we started our conducted tour around the ground. I think every part of the stadium was visited from the Boardroom to the "Boot-room". Tabatha and Dawn were able to see where their Daddies changed and where they hang their boots. Tabatha (who tells you her name is 'Preecey') stood in David's place in the changing room allowing us to snatch a photo of her.

Dave Galley showed us around the Physio room, explaining the different treatment the players receive when injured, he also explained how the equipment used to help the injuries worked.

Our tour lasted for an hour & half, I'm sure all the ladies found it very interesting. We then returned to the Joe Payne lounge to find a superb "English" tea laid out for us by the catering staff.

Peter Nelkin and David Kohler joined us for tea and a chat. All the ladies were given tickets for Luton's first home match against

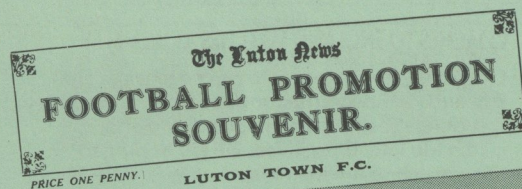


*Some of the ladies and young ladies with the ex-Chelsea & England Goalkeeper, Peter Bonetti, who is at Kenilworth Road and helping 'Alec Chamberlain' on goalkeeping tactics and general fitness.*

C. Palace. Three ladies have since filled in membership forms and I hope will join us at Kenilworth Road to watch Luton play again this season.

Thankyou to everybody who made the afternoon so enjoyable. A special thankyou to Louise and Kay, it was lovely to have them join us. I would like to involve the players' families a little more in the future.





Left to Right — Back Row: A.F. Durrant, M. Donaghy, R. Brewis, T.J. Mitchell, S. Hoar, F. Rollinson, Second Row: J.R. Elvey, F. Hawkes, R.W. Frith, R. Abbott, E.J. Dodd, J. Robinson, Mr. H. Smart (Director), W. Lawson (Trainer and Mr. C. Green, Secretary), Third Row: J. Jarvie, Mr. W. Soper (Director), E. Stevens, Mr. W.J. Allen (Director), R.M. Hawkes, Mr. F.J. Crick (Director & Treasurer of the Supporters' Club), J. Wilkie and Mr. E. Gibbs (Director). Front Row: A. Wileman, E. Simms and T.T. Wilson.

This is the first of a series of articles that I hope to bring to you during the season.

Firstly let me point out that I am not an official statistician of Luton Town. That position is held by Roger Wash. As you may know, he writes his regular informative column in the match day programme.

In this series I will try and provide a little background to the season featured.

So why start with 1913/14 you may ask, well this was the first time that promotion had been achieved. It was also the year in which a Supporters Club was formed for the first time, and they would play a part during the coming season.

Luton had joined the Southern League in 1894 and played in Division 1 for all but three years, when they were elected to join the Football League between 1897 and 1900.

At the end of 1911/12 season Luton were relegated to Division 2 of the Southern League, this represents the lowest point in the Club's history.

What of the opposition they would have to face, Treharris and Mardy among others. Who? you may ask.

Well in 1912/13 there were thirteen teams in Division 2 of the Southern League, ten of which came from South Wales, Luton, Southend and Croydon Common the exceptions, so as you can imagine there were a few long journeys every other week or so to some remote places in South Wales. Indeed the League gave the English clubs a subsidy to help with travel costs.

The Town finished fifth at the end of the 1912/13 Season, dropping only three points at home, but not doing so well on their travels.

A run of only one win in seven matches eventually cost promotion.

For the 1913/14 Season seven new players were signed, goalkeeper Mitchell and Robinson from Sheffield Utd, Frith from Derby, Donaghy (now there is a name) from West Stanley, Rollinson from Portsmouth, Brewis from Hartlepool, Wilkie from Chelsea and Simms from Barnsley. All would play a part in the coming season.

The season started well with a 1-0 win at Mardy. Town's famous England International half back, Bob Hawkes scoring the winning goal.

The Town party remained in Wales for a midweek match at Abertillery. During their visit they were taken on a Tour around Cardiff Docks and a walk along the cliffs at Penarth for "training". The match was won 2-1, Rollinson scoring his first goal for the Club, Wileman the other.

The first home game of the season was the return match with Mardy, which the Town won 2-1. Brewis scoring his first goal for the Club.

# SEASON'S TO SAVOUR

PART I • SEASON 1913/14 • BY MICK McCONKEY

The next four games were all won, two 6-0 home wins over Treharris and Abertillery (Simms scoring his first goals for the Club against Treharris), and away games won at Barry and Treharris.

The team arrived late at Treharris, due to disruption with transport caused by relief work being carried out in the aftermath of the pit disaster at nearby Senghenydd the previous day, where 440 miners lost their lives when an explosion ripped through the mine shortly after 8.00.

Such was the force of the explosion it was said to have been heard twelve miles away in Cardiff.

Under the circumstances there were few spectators to witness a poor match, the effects of the previous day clearly affected both teams. The Town, having won their first seven matches, were top of the League.

The Town's progress was dented by two consecutive defeats at Llanelly 0-3, and Pontypridd 2-3. The Town led for most of the match at Pontypridd, but conceded two goals in the last ten minutes. Ton Pentre were then beaten 4-0 away and the Town had now dropped to second behind Croydon Common.

Croydon were the Town's next opponents, but this was in the FA Cup. Croydon, so far unbeaten all season, left Luton with their tails between their legs after being on the wrong end of a 3-0 drubbing in a 4th Qualifying Round Tie, Rollinson 2 and Wileman the scorers.

Back to League action and Mid-Rhondda were beaten 8-1 to record the Town's best win of the season so far, but there was a shock opening to the match when in the first minute Mid-Rhondda's former Luton centre forward Smith, opened the scoring.

With winter now setting in Blundells were advertising their new winter coat range, prices ranging from 21s. (£1.05) to 4 Guineas (£4.20) for a fur coat.

Revenge was gained when Pontypridd came to Town, "a dull match" by accounts, but a 3-0 win gave the Town two vital points.

Back to the FA Cup again and the Town were drawn at home to South Shields, but the visitors offered the Town "financial guarantees" if they would switch the tie to South Shields, as the crowd would be likely to be much bigger on their ground, their offer was declined.

So the game was played at Luton on December 15th. It finished 0-0, South Shields won the replay two days later 1-0.

Ernie Simms was taken "ill" after the replay and remained in his native South Shields, not well enough to travel back to Luton.

The Town entertained Aberdare on the Saturday before Christmas, with Simms still in South Shields Brewis was called into the side for the first time since September, and he responded by scoring five in the Town's 7-0 win in front of a "very small" crowd. Could Christmas Shopping have affected crowds in those days too?

If you were buying your drink for Christmas J.W. Greens were advertising their Christmas Hamper, consisting of a bottle of champagne, sherry, brandy, claret, two bottles of port and two bottles of whiskey, all for 21s. or £1.05 with free delivery within five miles of Park Square.

Simms was still not to be seen, though a doctor's note had been received, saying he was suffering from "gastritis", though there seemed to be a little doubt as to its validity.

There would be no holiday for the team over Christmas, as they would have to play three games in three days.

Town were beaten 0-1 on Christmas Day at Newport in front of a "record crowd".

The result was reversed twenty four hours later, Bob Hawkes scoring the winner. The drama that day was off the field.

A man was arrested in the ground for brandishing a loaded shotgun. He was ranting and raving and threatening to use it, but he was eventually overpowered by several policemen and taken away for questioning.

The following day the Town travelled to League leaders, Croydon Common, along with approx. 600 Luton supporters, who paid 3s. 9d. return on a special train organised by the Supporters Club. Who says away support is something which has only happened in recent times? They were rewarded with a useful point after a 1-1 draw.

The Town were not in action again until mid January, when Caerphilly provided the opposition in consecutive weeks. The home match came first, which the Town won 4-0, Simms marking his return with two of the goals. The following week the Town won a remarkable match 9-0, Simms this time scoring four times.

Next came a very vital match at home to Brentford. The Town got off to a flying start when Rollinson scored in the first few minutes and they never looked back after that, finally winning 3-1. Brentford's goal was scored by England test cricketer, Patsy Hendren.

The next four matches were all won to keep the Town still in second place, Aberdare away 5-1, Barry, Llanelly and Ton Pentre all at home. The match against Barry was played in what was described as "near arctic conditions" in driving snow and gale force winds.

The Supporters Club were planning their second excursion of the season, this time to Swansea for the next away match.

The train would leave Bute Street Station at 4.20 a.m., the fare would be 7s. 6d. return.

Somewhere in the region of 250 Supporters made the journey to make up a part of a "large" crowd for this important match.

The result was a 1-0 win for the Town, Wileman scoring the all-important goal.

The Town were two points behind Croydon Common in second place, and seven points ahead of Brentford in third position, but they had played three matches less. Stoke City were one point behind Brentford, having played the same number of matches, so as long as there were no slip ups the Town would win promotion.

On the last Saturday in March they travelled to Tonypany to play Mid-Rhondda, and the players received a shock when they arrived at the ground. There was not a blade of grass on the pitch, instead it was a covering of coal dust. The only contrast being the white pitch markings and goal posts. Heavy rain soon turned this coal dust into what was described as "black putty". The Town never adapted to these strange conditions, and were lucky to come away with a 1-1 draw, Simms scoring for the Town. But as events would transpire it was an important point dropped.

The Supporters Club organised two more excursions, to Brentford on Easter Saturday and to Stoke on Easter Monday. Such was the demand for the Stoke game it looked like as many as eight trains would be needed to meet the demand.

Before that the Town entertained Swansea and beat them 5-0, all the goals coming in the second half. There was, however, an extraordinary incident in the first half when in an off-the-ball tangle Town's keeper Mitchell appeared to kick Swansea's centre forward Brown to the ground. The referee waved away the protests of the Town's players and sent off Mitchell.

However, Duffy the Swansea captain and Brown himself, protested to the referee that he should not have sent off Mitchell. After much discussion Mitchell was recalled.

There were now four matches left, and as the top of the table looked, four points over the Easter period weekend would clinch promotion.

	P	W	D	L	GOALS FOR-	AG.	PTS.
Croydon							
Common	26	21	5	0	67-	9	47
Luton Town	26	21	2	3	86-	19	44
Brentford	25	18	2	5	70-	16	38
Stoke City	25	18	2	5	64-	25	38

By coincidence the Town's remaining matches were as follows:

April 10th (Good Friday)

Stoke (Home)

April 11th (Easter Saturday)

Brentford (Away)

April 13th (Easter Monday)

Stoke (Away)

April 18th Croydon Common (Home)

The Club had upset the Supporters by announcing that the minimum admission fee would be doubled for the Stoke match, as this would help the Club to pay any bonus payments due to the players if promotion was gained. The Supporters Club, however, put pressure on the Club to reverse their decision, which they did.

The best crowd of the season "about 12,000" watched the Town beat Stoke 2-1. So the decision was justified to charge the normal prices.

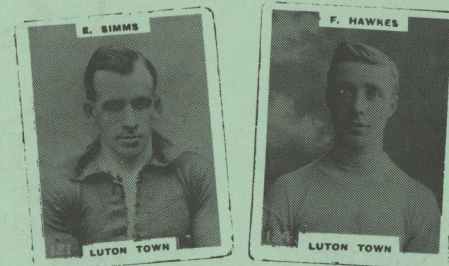
In the match itself two first half goals by Simms and Rollinson seemed to set up a comfortable win, but shortly after the second goal Durrant was injured and had to leave the field for the rest of the game. Stoke soon pulled a goal back but the "ten men" held on in the second half.

On Easter Saturday some 600-700 Luton Supporters travelled to see the Town draw 0-0 at Brentford. They

were as good as promoted now with Stoke out the race. The match on Easter Monday at Stoke was now only of importance to the Town, a point would do it.

Some 1,500-2,000 fans travelled to Stoke to make up part of the 18,000 crowd for the match. It was reported that the gate figure could have easily been doubled had Stoke still have been in the race.

Simms put the Town 1-0 in front at half-time. Stoke levelled the score half way through the second half. The Town hung on under a lot of pressure, then with only a few minutes left Bob Hawkes took a free kick, which he drove across the penalty area and Brewis got a touch on the ball and deflected into the goal, that was it — promotion.



Croydon Common came to Luton having lost twice over Easter. Their first defeats of the season the Town were two points behind them.

A disappointing match was watched by a "large" crowd, but the Town came out on top winning 2-1, Wileman scoring both goals.

Croydon Common won the Championship but only on goal average, thus that point dropped at Mid-Rhondda cost the Town the Championship.

## POSTSCRIPT

Before the Town could start the new season back in Division 1, Europe was at war. The 1914-1918 war had started a few weeks before the season started, but unlike the Second World War football was not suspended. The

1914/15 was played to a finish before football was suspended until 1919. The Town finished fourteenth out of twenty, a slightly disappointing season as their hopes of a much better showing, but these were difficult times.

Many of the Town players would soon be fighting for their country in the "Great War", as it was to become known and some would pay the ultimate sacrifice. Of the 1913/14 team Jack Jarvie and Arthur Wileman were killed along with former Town players Ernest Dodds, Frank Gilder and George Porter.

Ernie Simms was seriously wounded, but made a full recovery, so much so that he played for England after the war. Sid Hoar was gassed, but he too made a full recovery and played on after the war.

Three other Town players, Heath, Lindley and Roe were also wounded.

## SOUTHERN LEAGUE SECOND DIVISION

### FINAL TABLE 1913-1914

	P	W	D	L	F	A	PTS
Croydon Common	30	23	5	2	76	14	51
LUTON TOWN	30	24	3	3	92	22	51
Brentford	30	20	4	6	86	18	44
Swansea Town	30	20	4	6	66	23	44
Stoke	30	19	2	9	71	34	40
Newport County	30	14	8	8	49	36	36
Mid Rhondda	30	13	7	10	55	37	33
Pontypridd	30	14	5	11	43	38	33
Llanelly	30	12	4	14	45	39	28
Barry	30	9	8	13	44	70	26
Abertillery	30	8	4	18	44	57	20
Ton Pentre	30	8	4	18	33	61	20
Mardy	30	6	6	18	30	60	18
Caerphilly	30	4	7	19	21	103	15
Aberdare	30	4	5	21	33	87	13
Treharris	30	2	4	24	19	106	8

*If you have enjoyed this article, please let me know as I would be happy to bring you more of the same.*

*In the next issue I will cover the FA Cup run of 1932/33, when the Town reached the Quarter Finals for the first time.*

# BROWNE & LEWIS

## • LTD. •

# • CURTAINS •

## LARGE RANGE OF MADE TO MEASURE AND READY MADES

### WIDE RANGE OF FABRICS • EXTREMELY COMPETITIVE PRICES

### TRACKS & CURTAINS POLES SUPPLIED AND FITTED

### ABSOLUTELY FREE AND NO OBLIGATION MEASURING SERVICE

#### ON PRESENTATION OF THIS ADVERTISEMENT

#### 5% DISCOUNT OFF ANY PURCHASE OVER £10.00

59, Hightown Road, Luton, Beds. Telephone (0582) 412714  
MON-FRI 10 am – 5 pm. SAT 10 am – 4 pm.

\* ALL THE BEST TO THE LUTON TOWN SUPPORTERS CLUB \*



# PLAYER PROFILE

## Jason Rees

A series of questions were asked to the players, which we now relay to the Supporters Club

**Full Name** JASON MARK REES  
**Age** 20  
**Date of Birth** 22-12-69  
**Height** 5' 5"  
**Weight** 10st  
**Previous Clubs** NONE  
**Married** NO  
**What are your hobbies** GOLF, SNOOKER  
**Who are four favourite pop stars** SOUL TO SOUL, SYBIL  
**What is your favourite ground and why** OLD TRAFORD, MADE MY FULL DEBUT THERE  
**Who is your most difficult opponent and why** STUART PEARCE  
**What is your idea of relaxation** WATCHING T.V. AND SLEEPING  
**Favourite Food** STEAK AND McDONALDS  
**Favourite other Sportsmen** NICK FALDO



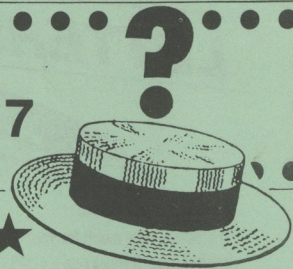
# PLAYER PROFILE

## Iain Dowie

**Full Name** IAIN DOWIE  
**Age** 25  
**Date of Birth** 9-1-65  
**Height** 6' 1"  
**Weight** 13st 2lbs  
**Previous Clubs** HENDON, ST ALBANS  
**Married** NO  
**Children** NO  
**Likes** TRAVEL, EATING OUT, POETRY, MUSIC  
**Dislikes** SMOKING, UNFRIENDLY PEOPLE  
**Favourite other player** NORMAN WHITESIDE  
**Most memorable match** LUTON vs DERBY  
**If you were not a Footballer, what other job would you do?** PUBLIC RELATIONS, MEDIA  
**Favourite Television Show** HILL STREET BLUES  
**Hobbies outside Football** GOLF, TENNIS, READING  
**Favourite Food** SUNDAY DINNER  
**Favourite Drink** RED WINE/GUINNESS  
**Favourite other Sportsmen** DALEY THOMPSON AND SEVE BALLESTEROS

Next issue we feature Alec Chamberlain and David Preece. If you would like a feature on any players, past or present, please write to:  
Philip Francis, c/o LTSC, 1 Maple Road, Luton, Beds.

# "HATTERS MASTERMIND" No. 7



## ★ Your chance to win a GREAT LUTON TOWN PRIZE! ★

This time the "Hatters Mastermind" is based on the playing careers of the Town Manager Jim Ryan, and the coaches John Moore and John Faulkner.

- No. 1** When Jim signed for the Hatters from Man Utd, three other players also joined Luton from the Old Trafford Club. Name them. *SUTTON UTD*
- No. 2** Jim gained a European Cup Winners Medal with Man Utd. Which other player later to join Luton also received a medal?
- No. 3** Which non-league club did John Faulkner play for before starting his football league career? *SUTTON UTD*
- No. 4** John Faulkner was well known during his playing career by his nickname. What was it?
- No. 5** Which Scottish League club did John Moore play for before joining the Town? *MOTHERWELL*
- No. 6** Which was the first Medal won by John Moore with the Town? *DIV 4 CHAMP*
- No. 7** Which league clubs did John Moore play for after leaving the Town? *BRIGHTON - NORTHAMPTON*
- No. 8** Against which teams did Jim and the two Johns score their first league goals for the Town?

Send your list of all eight answers, or as many as you can answer, on a postcard or paper to:- LTFC Supporters Club, "Hatters Mastermind" No. 7, c/o LTFC, 1 Maple Road, Luton, Beds. LU4 8AW. Can be given to any committee member or received by first class post no later than Saturday 24th November 1990.

Rules of entry — All entries to be limited to LTSC members ONLY and in the event of any close result the committee's decision will be final. Also no present committee can participate.

In the event of a tie all the correct entries will be put into a hat and the winner drawn out at the nearest social event after the closing date.

## ★ COMPETITION WINNER OF THE OUR SIXTH ★ HATTERS MASTERMIND

Unfortunately, due to a few printer's errors, we had a bad response to the last Hatters Mastermind. In fact, we only received one correct entry which came from:

Martin Smith, 37 Drummond Ride, Tring, Herts. HP23 5DF

Due to the printing errors, question No. 5 should have read ...

"Which Luton players made their league debut for the Town against Oldham Athletic on 19/8/78?"

and No. 6 should have read ...

"The same season the Town lost 2-0 at Boundary Park What was unusual about the Oldham Goal Scorers?"

We do once again apologise about the mistake, which obviously threw a lot of members.

Answers to No. 6 Hatters Mastermind were as follows:

**No. 1** Gary Heale. **No. 2** Ron Cope. **No. 3** Peter Nicholas, Vince Hilaire. **No. 4** Graham Horn. **No. 5** Kirk Stephens, Steve Sherlock, Chris Turner, Mark Aizlewood, Mal Donaghy, Bob Hatton, David Moss. **No. 6** Vic Halom, Steve Taylor. (Both played for the Town). **No. 7** Peter Sprirring. **No. 8** Mike O'Hara.

## ★ COMPETITION PAGE ★

### SOMETHING FOR THOSE WITH CRYSTAL BALLS

The Town's remaining LEAGUE games are listed below. We are running a competition for which a Prize will be awarded, at the end of the season, to correctly guess the Hatters' scores to the end of the season.

Points will be awarded as follows: For a correct score: 6 Points. Correct result: 3 Points.  
Correct Luton Score: 1 point (only 1 Point awarded per game)

FOR LTSC USE ONLY					
Date	Venue	Opponents	Result (Predicted)	Points (Actual)	Running Total
Nov. 3	A	Derby County			
Nov. 10	A	Liverpool			
Nov. 17	H	Manchester City			
Nov. 24	H	Aston Villa			
Dec. 1	A	Nottingham Forest			
Dec. 8	H	Arsenal			
Dec. 16	A	Crystal Palace			
Dec. 22	A	Tottenham Hotspur			
Dec. 28	H	Sheffield United			
Dec. 29	H	Chelsea			
Jan. 1	A	Wimbledon			
Jan. 12	H	Southampton			
Jan. 19	A	Leeds United			
Feb. 2	H	Queens Park Rangers			

USE THE FORM BELOW OR A PHOTOCOPY IF YOU DON'T WANT TO DAMAGE THE NEWSLETTER.

ALL ENTRIES TO BE RECEIVED BY THE 31st OCTOBER 1990 AND RULES AND CONDITIONS AS COVERED IN HATTERS' MASTERMIND APPLY.

Please forward your entries to L.T.S.C., c/o LTFC, 1 Maple Road, Kenilworth Stadium, Luton, Beds. LU4 8AW

Name: .....

Address: .....

..... Membership No. ....

FOR LTSC USE ONLY					
Date	Venue	Opponents	Result (Predicted)	Points (Actual)	Running Total
Feb. 9	A	Coventry City			
Feb. 16	A	Manchester City			
Feb. 23	H	Liverpool			
Mar. 2	H	Nottingham Forest			
Mar. 9	A	Aston Villa			
Mar. 16	H	Norwich City			
Mar. 23	A	Manchester United			
Mar. 30	A	Sheffield United			
Apr. 1	H	Tottenham Hotspur			
Apr. 6	A	Chelsea			
Apr. 13	H	Wimbledon			
Apr. 20	H	Sunderland			
May 4	A	Everton			
May 11	H	Derby County			



# LETTERS PAGE



Dear Supporters Club,

Thank you very much for your kind invitation to look around the football club. It was a really enjoyable day, one that the girls and I will never forget. Our first "real" football match versus Crystal Palace was especially exciting and has led to us getting membership forms.

Lucy and Emily were a bit concerned when we found ourselves sitting surrounded by Crystal Palace fans. My only worry was that I couldn't understand a word they were chanting, but my interpreter has now informed me that they were saying "Eagles!" but you could have fooled me.

Many thanks again, looking forward to seeing you at the next social meeting.

Good luck for the rest of the season!

Yours,  
Joy Rawlinson

Dear Sir/Madam

I enclose my completed membership form and cheque for renewal to the Supporters Club.

The Danish Branch of the L.T.S.C. has spent the summer recovering from last season's nail-biting finale and the World Cup excitement. I have now returned the 'Pacemaker' and am looking forward to the new season with quiet confidence, while planning my trips 'home' to clash with certain games.

Yours in Denmark

P.S. Any chance of another Fixture List?

Steven Herman  
Sophievej 7  
6700 Esbjerg Denmark

Dear Supporters Club,

I am writing to thank you very much for an enjoyable afternoon I had at the organised Luton Town Supporters Club 'Ladies Day' on Thursday 23rd August 1990.

I had a great time being shown around the ground by the club's General Manager, Bill Tomlins, and found it very informative. I was very pleased to meet some of the players' wives and their children, especially Louise Preece's daughter, Tabatha, and Kay Beaumont's little daughter, Dawn. It was a pity that there wasn't more of the players wives, as I would like to find out more from them about their lives and being married to a professional footballer.

While we were all being given the tour of the ground with Mr. Tomlins, some of the playing staff were still changing in the dressing room, unaware of all the females walking round and we nearly caught them with their trousers down — Oh what a pity!

I would finally like to say that this day was one that I hope the Supporters Club will repeat in the future.

All the best,  
Miss M. Chellaw,  
Supporters Club Member

Dear Phil,

On behalf of the University branch of the Leeds United Supporters Club I would like to thank you for all you did in organising the football match last Saturday morning.

Would you pass on our thanks to the other members of your Supporters Club who, along with yourself and those people at Luton Town Football Club, helped us gain entry to Kenilworth Road to see the match that we may otherwise have missed.

We all enjoyed the day. The whole day was good for football and what football should be about.

Once again, thank you very much and maybe we'll see you early in the New Year.  
All the best for the rest of the season.

Yours in football

Peter J. Lumsden Secretary/Treasurer,  
University Branch,  
Leeds Utd Supporters Club

## SWOPS & WANTS

Dear Sir,

I was wondering if any of your members may like to exchange or have any spare programmes and autographs of Luton Town.

I am collecting autographs, photographs of different teams from all over the country, and hope to have most of them by the end of this season.

I would be much appreciated if one of your members could get in contact with me.

Thank you for your time and co-operation.

Yours in Sport,  
Mr. Andrew Robertson,  
47/3 Wester Hailes Park,  
Edinburgh EH14 3AQ, Scotland

Dear Supporters Club,

You may be interested to hear that we have surplus Gillingham Home matchday programmes, from season 1986/87 to season 1989/90 for exchange.

Should any of your members find they have spares of their own and wish to exchange programmes, please let me know.

Many thanks,  
R. Allan, Gillingham F.C. Blues Supporters Association,  
52 Milner Road, Gillingham, Kent. ME7 1RB

*While on the subject of football programmes the editor of this publication requires some Luton Town Homes & Aways to fill the gaps in his large collection.*

*If you could help me with any programmes for sale or exchange (ALL pre-1954) then please can you contact me through this newsletter at the usual address stated.*

## • SECOND AGM REPORT •

The second Annual General Meeting of the Luton Town Supporters Club was held at Kenilworth Road on the 9th July, 1990.

The meeting was opened by Chairperson Pam Gray who thanked the members present for attending the A.G.M. and then followed by reading apologies received. The minutes from the previous A.G.M. were then approved and signed as being a correct record by the Chairperson.

There then followed the Officers reports, firstly from Pam who expressed her thanks on behalf of the Committee, to the Football Club for their kind co-operation in our various functions over 1988/1990, such as Quiz Evenings, Chat Evenings, Presentation Evenings and the Childrens Fun-Day. Particular thanks were due, she commented, to Director Henry Richardson who had kept in close contact with the Supporters Club over the period particularly regarding the contentious matter of the re-location of the L.T.S.C.

Merilyn Fussell (Membership Secretary) reported that the membership of the Supporters Club had doubled since she took over the responsibility of Membership Secretary, and she thanked in particular her husband, Vic, for his sterling support over the period. Merilyn, however, pointed out that if the growth of the Supporters Club continued at a similar rate computerisation of records would have to be a serious consideration. At that point Merilyn requested that Nick Cooper, the Supporters Club Foreign Correspondent, give a brief outline of the far flung reaches of the world from which correspondence had been received and Nick was only too happy to oblige.

Mark Chapman, of the Supporters Club Treasurer, gave a brief summary of the Club's financial position in particular pointing out that a great deal of money had been saved by the kind co-operation of Luton Town Football Club who provided rooms at Kenilworth Road free of charge for the various functions. Without the kind co-operation of the Football Club the Membership Fee and also charges for the various functions would have to be considerably increased.

Tom Hunt, Supporters Club Press Officer, gave a short report thanking in particular Brian Swain of the Luton News and Ken Wilson of B.B.C. Radio Bedfordshire for their co-operation in publicising various events and also John Buttle, Controller of the Football Club p.a. system on match-days. It was once again emphasised that the best form of publicity is "word of mouth" from the members to their families and friends as this would ensure that the Supporters Club prospered and grew.

Bill Tomlins, L.T.F.C. Representative, said that the Football Club were delighted to have, at long last, an active Supporters Club and that they shared in the Committees pleasure at its growth.

There then followed the election of Officers and Committee. Firstly the Officers, Nick Owen (President), Brian Swain (Vice President), Pam Gray (Chairperson), Vic Fussell (Deputy Chairperson), Pat Dawkins (General Secretary), Merilyn Fussell (Membership Secretary), Mark Chapman (Treasurer), Tom Hunt (Press/Publicity Officer) and Bill Tomlins (L.T.F.C. Representative) were returned unopposed. The remaining seven places in the Committee were the subject of a ballot among the members present and this resulted in the re-election of Phillip Francis, John Pyper, Stuart Goode, Nick Cooper, Tim Clayden, John Chapman and Beryl Briggs. The unlucky nominees from the floor were Marilyn Toomey and Eddie Joelson. The Committee were delighted at the obvious confidence in them expressed by their re-election but offered thanks to Marilyn and Eddie for their enthusiasm in standing for the posts.

The subject of membership fee was then discussed and Mark advised that a slight increase would have to be levied due to the increase in posting and stationery costs. He also reported that it was hoped an increase in advertising and sponsorship would enable future cost to be kept down and he was delighted to advise that the entrance fee for our Guest Speakers Evenings for 1990/1991 would, unless effected by unforeseen circumstances, be kept at the present rate.

Vic requested a show of hands to approve the continued membership of the Supporters Club in the National Federation of Supporters Clubs and this was carried unanimously. Nick then proposed an amendment to the constitution under 3(a) that read:-

'The Committee propose that any member wishing to stand for election as an Officer of the Committee must first have served for one full year as an Executive Committee Member.'

The proposal was seconded by Tom Hunt and carried by the floor.

The meeting closed at 8.30 p.m. and an open discussion followed on various matters, including the relocation of L.T.F.C.



The Cooper Printing  
Equipment Company  
Limited

General Printers  
& Rubber Stamp Manufacturers

For Prompt & Personal Service

Please contact:

Ron Aggett on Harpenden 764431

The Cooper Printing Equipment Company Ltd.

Heathfield Works, Leyton Road, Harpenden,  
Herts. AL5 2JB Fax: 0582-768608 Telex: 826560