

HATTERS

News

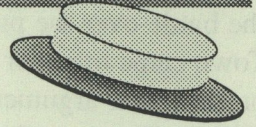
LUTON TOWN SUPPORTERS CLUB

Autumn 1996

"VOICE OF THE FANS"

Issue No.27

Getting Better, Match by Match?

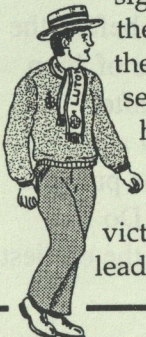


Saturday August 16th, the season was about to get underway, optimism filled the ground, as we eagerly looked forward to what we hoped would be the Town's best campaign since reaching the Littlewood's Cup final in the late 1980's. Pre-season had gone very well, with notable victories over Norwich City and West Ham United, this combined with the improved form shown in the latter half of the previous season, hopefully justified these thoughts.

How long did it last, 30 minutes, the time it took Burnley to establish a 2 goal lead, as despite a well taken Thorpe goal just before the break and some good pressure in the second half which did lead to a missed Guentchev penalty (For the first time in Town colours) not enough chances were created and consequently we ran out losers.

This seemed to be the pattern in the second game, the first in the Coca-Cola Cup but goals from Oldfield, Grant and Thorpe gave the Hatters a convincing victory, but the defence never looked secure, and this point was emphasised in the following game at Brentford, where despite leading twice, the old defensive frailties returned to haunt the team, as the opposition showed a will to win which we could only hope for, scored twice in the last 10 minutes to secure victory. Bristol City followed, the performance was abject, not helped by the rightful dismissal of Thorpe for a right hook retaliation to a poor challenge, with the Town never improving after this, the only bright spot being introduction of Fotiadis. At the end we were bottom of the league having conceded 10 with only 3 league in reply and no points.

Changes were inevitable, with Showler, recently signed from Bradford City coming in on the left, the Patterson dropped in favour of the fit again Marvin. A poor game was settled by a rare Mitchell Thomas goal, heading in a Alexander free kick, but the defence still looked very vulnerable, especially in the last ten minutes, but a victory was a victory, so hopefully this could lead to better things.



This led us to a new stadium, the Memorial Ground, the new home back in Bristol for the Blue & White half of the city, and as for the stadium, an unfinished collection of Terrapin building within the rest a building site would be a far more apt description, with the pitch already in a very poor condition. What it will be like for the game in February we can only speculate.

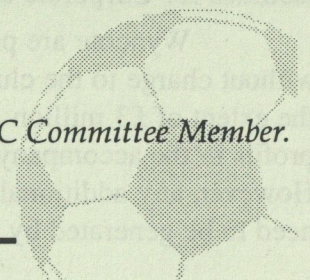
20 minutes gone and we were 2-0 down and looking as though it would be another season exiting this competition in the first round, however, half-time team talk worked wonders, with a far more professional display in the second half culminating in Fotiadis laying on a goal for Oldfield to score his second of the campaign.

This followed through to a far better display at Wycombe, where the Town dominated for long periods, but again chances were few and far between, but a second half move again involving Fotiadis let David Oldfield secure the points. Then followed the game against Gillingham, where again there were signs of confidence returning, with Guentchev settling nerves and Oldfield adding a second after a fierce Hughes shot was only parried by the veteran Gillingham goalkeeper Stannard.

11th place was now achieved, we can only hope that this can be used as a springboard to better things. Certainly the back four have been educated into what is required in the second division, after so far failing to test, but Hughes has come back from Crystal Palace looking sharpe, Oldfield has so far confounded his critics and performed admirably up front in the absence of Marshall, but the real find of the season so far must be Fotiadis, who is already looking an extremely good prospect, and hopefully one can be held onto will develop into a top class striker.

Come on YOU Hatters!!

- Yours Mark Chapman - LTSC Committee Member.



KOHLERDOME / WYNCOTE DEVELOPMENTS PLANNING ENQUIRY

During the month's of July and August all sides in the battle over the proposed new ground for Luton Town came together at the Town Hall in order to present their arguments to the Planning Enquiry Officer. There are 2 distinct plans under consideration;

1) Kohlerdome Corporation-

They plan, under the guidance of Luton chairman multi purpose 20,000 capacity stadium, this would incorporate an Indoor Arena with a portable pitch, which in addition to providing a home to the football club will also be a venue for a host of other activities, notably concerts and other sports as well as facilities for the University.

Funding will be via equity stakes, Whitbread have already expressed an interest, particularly in the proposed hotel and restaurant complex which will accompany the Dome, additional monies are hope to be attracted from other commercial sponsors, but there would be a requirement for lottery monies as well as grants from the Football Trust

The Local Authority have issued a Compulsory Purchase Order to acquire the land in the event of planning permission being granted, this will override the option to purchase granted by Lucy Phillip's to Wyncote.

2)Wyncote Developments

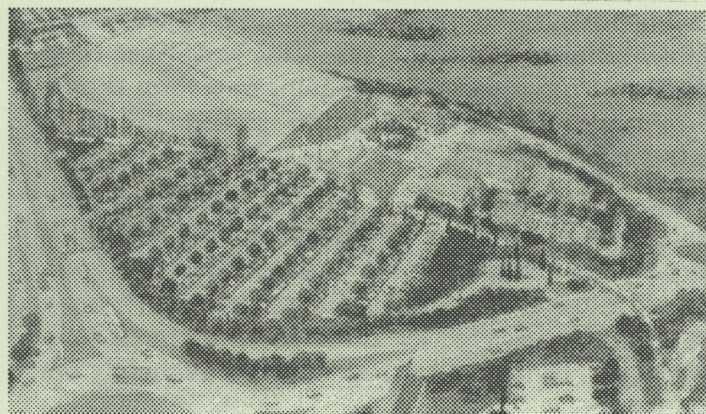
They propose an initial capacity of 12,000 which could be increased in stages to hold a maximum of 20,000. The design is of traditional design, initially on 3 sides only with the ability to expand to 4 sides if the demand requires.

It will be specifically designed for Football only, with no outside events, likewise there would be no facilities for Corporate entertaining or guests.

Wyncote are proposing to provide the land without charge to the club, and additional finance to the extent of £3 million .This would come from their profits in the accompanying Retail Development. However, any additional development costs would need to be generated by the Club.



The Supporters Club joined with other Supporters groups, Loyal Luton Supporters Club, Bobbers Travel Club, The Bobbers Stand & Supporters Club to make representations. In which we had to support either of the above plans or oppose the application.



INTO THE FUTURE- This is the latest drawing of the stadium. The 20,000 capacity stadium by Junction 10 of the Motorway - No decision to made until next Summer

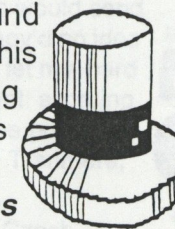
Because of the limited funds available from the Wyncote option and thus the reliance on the club to have to raise large sums of money to complete the development, and as little detail is available on the details of the new stand, we supported the Kohlerdome application, although have made it clear we would support any viable proposition to relocate the club within the borough boundaries, or immediate area, i.e. 5 mile radius.

The Planning enquiry has now drawn to an initial close, although there is now a requirement to produce an Environmental Impact study in to the plans, something which was not required before the enquiry opened, this was on the insistence of John Gummer and their are rumours thus was after pressure from Graham Bright, so to delay any decision to after the next election. For this purpose the enquiry will reconvene in December. Do not expect a decision before next Summer at the earliest.

NEWSDESK ... SUPPORTERS CLUB ... NEWSDESK ...

MAD HEAD WEAR for the MAD HATTERS!!

As you may have seen around Kenilworth Rd and away matches this Season there are 'Extremely Big Hats' appearing on supporters heads.



They come in the three clubs colours and two designs and are very well made.

If you are a Mad Hatter and wish to join the small band of fans wearing them they can be purchased at a Great Value price of **£10.00**. All you need to is contact a Mike Kramer who is based in Dunstable and his telephone number is:

01582 471933 or contact him on his mobile number: **0385 300641**.

LUTON TOWN SUPPORTERS CLUB PREDICT THE SCORES COMPETITION

As you may know if you have visited Kenilworth Road for a game in the last 1 1/2 months, we have been issuing out application forms for our '**Predict a Score Competiton**'. Due to the postal strike and delay in sending out this Newsletter we have extended our deadline for all entries to **LTSC members only**.

All you have to do is complete both sides of the form with your predictions and post them off or hand them as instructed on the form.

THAT'S ALL THERE FOR YOUR CHANCE TO WIN A £50.00 VOUCHER FOR THE LTFC CLUB SHOP!!

STOP PRESS... STOP PRESS... STOP PRESS... STOP PRESS...

Forthcoming Events ...

LTSC SOCIAL EVENING - 7th October 1996

WAYNE TURNER & TREVOR PEAKE

GUEST SPEAKER EVENING - in the

LTFC's Eric Morecambe Lounge, Maple Rd Entrance

Open to All members at £2.00 per member -

Non-members can join on the night.

SECURE CAR PARKING IN LTFC CAR PARK -in Maple Road

LUTON TOWN F.C. FAMILY TREE POSTER

Award winning rock journalist Pete Frame and Luton town Fan has produced a splendid **Luton Town Family Tree** featuring all the Luton Town Players that played from the beginning of the **1950-51** season to **1959/60** Season. He has already produced one for Man United that was very popular and as he has a limited edition of these, they will be very quick sellers. Poster measure 17" x 24" and are printed in B&W with illustration of various big names that played in the era.

Interested? If so, Send a Cheque for **£10** (inc P&P) to: Mr Pete Frame, Yeoman Cottage, Church St, North Marston, Bucks MK18 3PH. *If you are able to visit his home you could save yourself the Postage & packing of £5.00.*

LTSC Northern Branch

At the time of going to print with this newsletter we are having negotiations with various Supporters to set up a LTSC Northern Branch The main aim for this is to encourage more supporter from area approx 50 miles north of Luton to make contact with each other. With the intention of having regular meeting and to arrange travel to Home & Away game.

By the time the next Newsletter is published we hope to have confirmed our arrangements and any supporters that come into this category will be contacted via our new Northern Branch Co-ordinator.

WATCH THIS SPACE and LTFC programme for further details!!

Luton Town S.C. Xmas Quiz Night with the Players

MONDAY 9th DECEMBER 96

Starts 7.30 for 7.45pm

Venue as for the W.Turner/T.Peake Evening

Other Social Events being planned at present..

BRIAN STEIN & RICKY HILL GUEST SPEAKER

EVENING (Approx mid November or after Christmas)



LUTON TOWN SUPPORTERS CLUB



PREDICT THE SCORES COMPETITION

FIRST PRIZE: £50 VOUCHER • SECOND PRIZE: £15 VOUCHER

THIRD PRIZE £10 VOUCHER LOWEST SCORE : BONUS PRIZE

VOUCHERS ARE REDEEMABLE IN THE LUTON TOWN CLUB SHOP

NAME:

ADDRESS:

LTSC Membership Number (if applicable):-

League Name:-

Predict the results of each match at the end of 90 Minutes (normal full-time).

3 points for correct score and result (eg. you predict Luton 4 Walsall 1)

1 point for correct result only (eg. you predict Luton 1 Walsall 0)

4 Bonus Points for correct result and score involving 4 or more goals (eg. predict Luton 4 Walsall 1)

The winner will be the person with most points after completion of all league matches only.

If the games are postponed or abandoned the results will stand from re-arranged fixtures
In the event of matches not played, those games will be declared void

Possible to change your predictions on 01.01.97, notification will be made at a later date.

The judge's decision is final.

TIE BREAKER

In event of there being a tie the winner(s) will be decided according to the accuracy of your forecast of the total number of goals Luton score in the league in normal full-time.

Total number of goals forecast:

ALL ENTRIES TO LTSC MEMBERS HAVE NOW BEEN EXTENDED UNTIL 11th OCTOBER '96

Completed Forms and monies (if applicable) by post to: Cathie Crocker, Luton Town Supporters Club, c/o Luton Town Football Club, Ticket Office, Kenilworth Road, Luton, Beds, LU1 1DH
or hand in at the Luton Town Supporters Club Kiosk on 1st Team MATCHDAYS ONLY.

GOOD LUCK !!

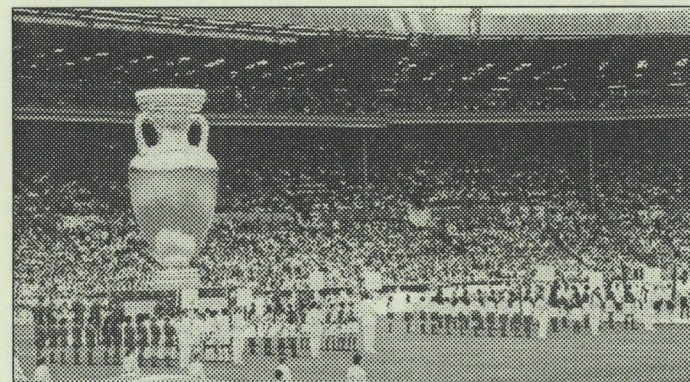
OPEN TO ALL LTSC
MEMBERS
A £1.00 ENTRY FEE TO
Non-Members

Euro 96 - How was it for you?

When international football tried to butt in on the domestic season with Euro 96 ticket order forms back in 1994, I wondered who in their right minds would send off vast sums of money for matches when they'd no idea who'd be playing. I certainly wasn't going to let my hard earned cash sit in the FA's ban account accruing interest for the next 2 years when it could be put to so much better use for those away trips to Tranmere, Grimsby and even Cesena

So how was it be the time Germany v Czech Republic rolled around for the second time (and I was there again) my flat looked as though Beavis & Butt-head had been holding a month long house party there and judging by the state of my bank balance, I'd been paying for it.

Simple, I had been talked into the Football Supporters Association's London Co-Ordinator for Euro 96 and had spent the last month living on Planet Football. Don't get me wrong, I loved every minute of it but it was hardly what I'd planned. I'd envisaged Euro 96 as a chance to develop a rapport with the remote control and a few pints of mine host's finest.



THE SCENE FROM THE OPENING CEREMONY PRIOR TO THE FIRST MATCH - ENGLAND v SWITZERLAND

But let's get back to 1995 when Poborsky, Penev, et al were mere glimpses on the Euro cable stratosphere. The FSA had plan to help fans during Euro 96 and I needed to pull together the FSA London squad pronto. familiar faces from the London Branch were early signing as but you can't build an international side from just one team. We dragged old friends and acquaintances from Euro 92 and Italia 90 from retirement and headed for the pub. A '96 metamorphosed from a logo to a reality, we had a harmonious team of Chelsea, Luton, Oxford, Birmingham, Villa, Ipswich, Sunderland Everton, Leicester, Leeds, West Ham and Man United fans preparing for 'the big kick-off'.

While most fans were busy studying Russian team formations, we were planning a Football Embassy (a drop in information centre), a Fan's Guide in 3 languages and a 16 team Supporters' Tournament, all on a minuscule budget. Impossible? Nah, but I did feel like god suddenly being told, actually you've only got 3 days instead of 7.

A football started to make its tortuous way home, the fan guide was in the very capable hands of Blues devotee and former fanzine editor, Adrian Brown, the 6-a-side tournament was booked in at Middlesex University and everyone in the team knew the game plan. My Euro 96 sticker book was filling up in a pleasingly anorakish manner but we were still without a home for our Football Embassy.



We had promises but until I had the keys in my hand

By the time Dutch were ensconced in St Albans, Bulgaria were moving out of boring Scarborough and England were giving the tabloids a field day, Westminster Council gave us access to Piccadilly Mansions, our home for the next four weeks. Except that it bore more of a resemblance to a vacant squat than a penthouse suite. In fairness, we had seen the office space beforehand but memories fade or maybe my brain just refused to believe that the *inside* of a building could be that dirty. Saturday 1st June and in spite of the lure of free tickets for the Europe United football day at the Royal Festival Hall in the South bank, we fielded full team and set to washing walls, windows, paint work, wiring and putting posters over the really scabby bits.

By midnight on Wednesday, super-sub Ged had reconnected the electricity, wired up the entry-phone and laid the carpet while I'd been busy putting up a pristine David Platt wall chart, acknowledgments to the Football Trust, anti-racism poster, my Luton Town rosette and photos of assorted Euro stars to be. All that was missing now... Tables, chairs, fridge, photocopier, fax machine, pc noticeboards and refreshments for the hoards of media invited to the official opening the next day!

Opening up on Thursday I still had a monumental list of things to do but the free beer from Carlsberg had arrived so all was well. Cheers all round as our first visitors from Sweden arrived around 2.00pm and we were in business!

The next three weeks became an adrenaline rush of media interviews (busier than Di, I reckon), Embassy visitors, football matches, ticket confusion, football talk, football parties, football fans and yet more football. The 6-a-side was played under blazing skies with many a skinned knee and plenty of great action. The fan guides were given away in their thousands to bemused but grateful fans and the Embassy visitors' book filled with names from far and wide.

Apologises to regular viewers of Sky News who must have been truly sick of the sight of me by the end of it all but I guess their researchers don't know that many female football fanatics who are willing to be interviewed at all times of the day and night! When I wasn't being wheeled out for the media, I even managed to see some football. Any chance to get to a game and I was there. Well, even bank managers must have heard of Gazza & Co if not of the superior skills of Sammer and the god like Ziege. So I saw Germany, Italy, Czech Republic, Denmark, Croatia, Spain and England in half-a-dozen matches I'll never forget.

The names of the Croatian goalkeeper, danish coach and Italian physio may all fade away but the memories of the fans I never will - there were even a few familiar faces that I'm more used to seeing at Kenilworth Road than outside the Twin Towers. The Dutch fans received the official award for best supporters but my personal vote goes to the Tartan Army. I'm never met fans who are more open, friendly, big hearted and passionate than those wonderful kilt wearers who so rarely get the results their fervour deserves.

To them and all the other fans who made Planet Football unforgettable - Thank you - Beavis 7 Butt-head were welcome to the flat.

YOURS - Yvonne Fletcher

FSA London Co-ordinator, Euro 96 & LTSC Chairperson

Hatters

Player Profiles

Facts you didn't know about the players.

This time we focus on three more players that have made the headline early into the season:

FULL NAME:

JULIAN JAMES

DATE OF BIRTH: 22-3-70

HEIGHT: 5' 10½'

WEIGHT: 12st 6 lbs

PREVIOUS CLUBS: Preston North End - On Loan!

MARRIED: NO

CHILDREN: One - Bradley

LIKES: Spending time with my Son.



DISLIKES: Obnoxious People - Cleaning my house/ Ironing my clothes

FAVOURITE OTHER PLAYERS: David Ginola - Newcastle Utd

MOST FEARED OPPONENT: None - They've all got different qualities which as a defender you must try and cope with.

MOST MEMORABLE MATCH: Luton v Southampton - My first appearance as Sub score 1-1 first tackle against Jimmy Case!

FAVOURITE GROUND: Highbury - Arsenal

If you were not a Footballer, what other job would you do?:

Carpenter or work in Sports & Lesiure

FAVOURITE T.V. Show: Only Fools & Horses

FAVOURITE MUSIC: Most Music apart from Heavy Rock

HOBBIES OUTSIDE FOOTBALL: D.I.Y. - Most sports & Socialising with my mates

FAVOURITE FOOD AND DRINK: Chicken / Pasta - Tea

MOST ADMIRER PERSON: My Mum & Dad for putting up with my problems over the years.

MOST EMBARRASSING MOMENT: In Football - Coming out at Everton realising I hadn't got my LTFC Shirt on with 25,00 Evertonians laughing at me!

What would you do if you won the Jackpot on the lottery?:
Double check the numbers before going out on a massive Spending Spree!!

FULL NAME:

TREVOR PEAKE

DATE OF BIRTH: 10-2-57

HEIGHT: 6'0"

WEIGHT: 12st 7lbs

PREVIOUS CLUBS: Nuneaton Borough, Lincoln & Coventry.

MARRIED: YES to Haiddwen

CHILDREN: YES - One Boy
Callum 11 years old

LIKES: Relaxing

DISLIKES: Smoking - Arrogance - Greed

FAVOURITE OTHER PLAYERS: WAS - McFarland / C. Todd
IS - Tony Adams

MOST FEARED OPPONENT: WAS - K. Daglish/Ian Rush
IS - Paul Walsh

MOST MEMORABLE MATCH: F.A. Cup Final 87 v Spurs

FAVOURITE GROUND: Goodison Park- Everton

If you were not a Footballer, what other job would you do?:

Draughtsman

FAVOURITE T.V. Show: Whose Line is it Anyway!! - Alan Partridge, Harry Enfield, Have I Got News For You.

FAVOURITE MUSIC: Anything except Classical

HOBBIES OUTSIDE FOOTBALL: Wearing the sofa out / Going to Movies

FAVOURITE FOOD AND DRINK: Chilli-Con Carne - Pineapple & Lemonade

MOST ADMIRER PERSON: Dustin Hoffman / Frank Bruno & Billy Connolly

MOST EMBARRASSING MOMENT: When I discovered my swimming shorts were transparent on holiday. I shivered in the pool until everyone left the poolside - It seemed like hours !!

What would you do if you won the Jackpot on the lottery?:

I would definently let it change my lifestyle.



FULL NAME:

TONY THORPE

DATE OF BIRTH: 10-4-74

HEIGHT: 5' 8"

WEIGHT: 12st 6 lbs

PREVIOUS CLUBS: Leicester City

MARRIED: NO

CHILDREN: NO

LIKES: Going Out !

DISLIKES: Staying in

FAVOURITE OTHER PLAYERS: Peter Beardsley

MOST FEARED OPPONENT: Haven't got one

MOST MEMORABLE MATCH: Newcastle Utd (F.A.Cup 4thRd)

FAVOURITE GROUND: Newcastle United - St. James's Park

If you were not a Footballer, what other job would you do?:

I would try and stay in some sort of sport activity

FAVOURITE T.V. SHOW: Only Fools & Horses

FAVOURITE MUSIC: Soul & Swing

HOBBIES OUTSIDE FOOTBALL: Tennis, Snooker & T. Tennis

FAVOURITE FOOD AND DRINK: Chinese & Indian- Lager

MOST ADMIRER PERSON: My Mother

MOST EMBARRASSING MOMENT: Going out as a substitute and forgetting to put my shirt on under my jumper!

What would you do if you won the Jackpot on the lottery?:

Share it with my family and friends and be very happy (and charity would also have some)

