



# Come on you HATTERS



Issue No.  
46

LUTON TOWN  
SUPPORTERS CLUB



Autumn  
2000

Let's all pull  
together!

## VIEW FROM THE CHAIR

Dear Members

I hope you all enjoyed the summer break. By the time you read this newsletter we are well into the new season.

The close season has produced one of the largest numbers of changes ever seen within the walls of Kenilworth Road with a new owner, new management team, players signed and a supporters' representative on the board.

Firstly, I wish to extend a warm welcome to all the new board

members, players and members of staff, especially Mike Watson-Challis as Chairman and Ricky Hill as the new manager, both of whom have returned to the club in a different capacity.

Our thanks should be extended to the past Chairman Cliff Bassett for all his endeavours throughout the period of receivership; his continuing position on the board is welcomed as it offers continuity. Thanks also to Lennie Lawrence for his efforts during very difficult financial circumstances; many others would not have maintained the Club's league position, whilst having to sell a side which, if retained, could have pushed for a position in the first division. Our best wishes go out to him in his new position at Grimsby.

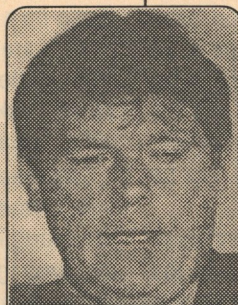
The season is likely to continue as one of change, both on and off the field of play. However, the long-term future of the Club has to be a new ground. Former Fulham player and local business man John Mitchell is leading the Club's efforts to relocate to a new facility as quickly as possible. The Supporters' Club will continue to support this aim, and Junction 10 remains the preferred choice. Hopefully, a planning application

will be submitted this season, but even assuming an application does not get called for a public enquiry, the likely development timescale will be at least 3 years.

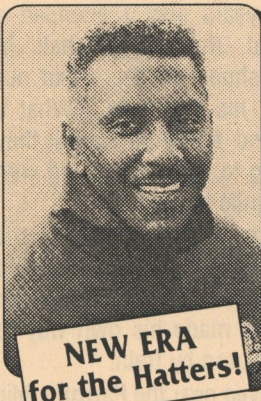
Fans should warmly welcome the board's decision to invite former supporters' chairperson Yvonne Fletcher as supporters' representative on the board. This initiative should help create a far greater level of communication both to and from the club, so that

supporters have a far greater understanding of why the major decisions are taken, and to enable fans to have a greater level of input.

Yvonne is intending to hold regular consultations with supporters, and providing these are approached realistically then hopefully we will see some benefits over the next few seasons.



Luton Town Director  
John Mitchell



NEW ERA  
for the Hatters!

**RICKY HILL**

*The fans' favourite.*

*We all want him to bring back those glory days to Kenilworth Road.*

*Continues over...*

### Inside this edition of the LTSC Newsletter...

- Profile on Ricky Hill and his new signings
- HATTERS CLASSICS - 1950/51 SEASON
- LETTERS PAGE
- Predict-a-Score Final Placings - 1999/2000 Plus a new competition!
- "Town on Tour" NEWS
- My Favourite Team
- PLAYER PROFILE - Mark 'Steino' Stein .... and much more!!



Exclusive

Read our Vice-President BRIAN SWAIN'S Column

## "TALK OF THE TOWN"





## Let's all pull together! VIEW FROM THE CHAIR # 2

In the meantime Yvonne continues to be an active and valued member of the Supporters' Club committee. If anyone has any issues to raise with Yvonne, please write to her care of the Football Club.

On the pitch the season has started in a disappointing manner, with the loss against Northampton

reflecting a very poor performance and showing how far the side has to go to mount a sustainable play-off challenge. In contrast, the Worthington Cup again looks like providing some early season optimism with a return to the magnificent Stadium of Light our reward for overcoming Peterborough in the first round.

Supporters have got to give the new board, management and players time to settle into their new roles, but hopefully by the turn of the year we shall start to see some more encouraging results.



Enjoy the season!

Mark Chapman - LTSC Chairman.



## Letters Page.... Letters Page.... Letters Page



**We all know of the 'colourful characters' who follow our beloved 'Hatters', even the local paper highlighted some of these wonderful loyal fans recently.**

I didn't get to read the article on John Pyper in the Luton News, but I hope it did the guy justice. No one gives more of his time and money than John to LTFC and I'm sure no other Luton fan can claim to 'live, sleep and breathe' Luton Town F.C. like he does.

I also liked the article on the gentleman (well into his 80's) who has followed the Hatters since the 1930's and use to live next door to Joe Payne, saying 'a nicer person you couldn't wish to meet'.

When I lived in Eaton Bray (during the 50's and 60's), we had Bob Morton living along the Rye, where the recreation ground was and a more 'down-to-earth' person I've yet to see. There's definitely no airs and graces with 'our Bob' - the legend of Kenilworth Road and the perfect 'gentle giant' of a man.

His son Gary prefers cricket & rugby to paying soccer, but despite his dad's fame, you wouldn't ever hear him bragging and whilst growing up in the village he was 'just one of the lads'.

In fact a few years ago, I attended a charity event at the village hall in Totternhoe, who should be there, but our modest Bob and his lady wife. What a lovely, humble and tight-knit family they are, always willing to help others and with that trade mark smile to boot.

Whilst at the game at Millmoor at the beginning of the month, I was amazed to see a gentleman, I should think of a similar age to Bob, who'd made his own way to Rotherham from Luton by train.

He told me he lived near the Parrot public house on Farley Hill, but wouldn't tell me his name. He used to work at Kent Meters near Crawley Green Road and to think he spends his hard-earned pension to watch

his beloved Luton Town team play is testimony to his dedication and determination too.

Most people in their 70's or 80's would be happy tuning-in to BBC 3CR or Chiltern Radio on a Saturday afternoon. When the Hatters are playing away, I would love the club to honour his wonderful 'exploits'. When I asked him his name, he wouldn't tell me saying he didn't like all the fuss.

Last season, was the first time since 1964 that I have not seen a single match at Kenilworth Road, although I managed to see the away games at Notts County, Wigan, Chesterfield and Scunthorpe United, plus the away cup game at Lincoln City.

It amazed me at Rotherham, where our team battled for the valuable point, that where the Luton supporters I spoke to came from was very surprising i.e. Cirencester, Liverpool, Blackpool, Castleford, Leeds and Sheffield as well as the droves from Bedfordshire too.

The sight and sound of the drummer and his colourful balloons was great to see at Millmoor and created a great atmosphere as it did at London Road in the Worthington Cup. I hope they liked my banner which I produce to add a little humour to the proceedings with 'Mega Watts- Powers Home! message'.

Back in April 1986, when the club made a presentation to Joe Payne's widow at Kenilworth Road to commemorate the golden anniversary of her husbands 'all-time' feat back in the mid-1930's, I remember her looking very emotional as she accepted the award, but I bet she felt very proud too.

I live in the district of Bolsover, North east Derbyshire, which is where Joe Payne spent his youth and early working life as a miner, before moving South to play full-time professional football with the Town.

Bolsover local tourist board, which boasts a 'medieval castle alongside junction 29 of the M1 motorway, does not

mention Joe's most amazing feat, despite the 'Guinness Book of Records' recording the fact.

The sight that really made a lasting impression on me at Rotherham was Andrew Fotiadis turning so brilliantly and leaving three defenders for dead with his blistering pace; it reminded me of Malcolm MacDonald at his very best. His superbly taken goal was also top-draw. Mind you for being quick on the draw, Mark Stein still shows razor-like reflexes when he hit the inside of the Rotherham post in the second half. I'm certain we would have won that game had Steino's shot gone in at that point.

When Luton played Hull City up north in a pre-season friendly, I stopped off at a petrol station whilst on my way home and four or five guys in a BMW were also filling up at the pumps. When I spoke to them it turned out they were the friends and the agent of Tommy Carter and also The Tiger's Theodore Whitmore too. Their agent told me that Tommy and Theodore's skill is unquestioned, but their being able to acclimatise to our extremely changeable weather conditions and the rough treatment they may receive from lower division defenders could upset them and make them feel like quitting our country and culture.

Yes, being a Luton Town fan is very interesting and it appears that there's never a dull moment whilst following the Hatters.

I'm sure Ricky is the man for the job, with the Chairman's backing (as with the bold signing of Mark Ovendale from Bournemouth) we can all see the plot coming together. All we need now is the new stadium and the support to go with it as we heard at Peterborough recently in the Worthington Cup match.

Here's wishing all the best to the club for the forthcoming season in the league and cup too!

**Geoff Evans The Worksof Hatter!**



# TALK OF THE TOWN

## Who would want to be a Football Manager?

WITH a bit of luck we will never know just how important it was for Luton Town and Ricky Hill when Matthew Spring's penalty bulged the net against Bournemouth. I only know I was getting inwardly more and more agitated as the game went on, against a side we had not managed to beat in our previous seven attempts. Where was a goal coming from? Would Bournemouth catch us with a sucker punch on the break? Would they do a Notts County, and leave us pointless, and joint bottom of the table, after three league games?

What relief when the ref pointed to the spot as Mark Stein tumbled under the rash challenge of Richard Hughes. And what joy as Spring lashed in Kenilworth Road's first goal of the season.

Until then we were heading for our worst start to a league campaign since 1996, when we were done 2-1 by Burnley at Kenilworth Road on opening day, then lost 3-2 at Brentford after being ahead with ten minutes to go and then were well stuffed 5-0 by Bristol City at Ashton Gate. Not quite the perfect opening chapter in the story of Lennie Lawence's first full season in charge! True, we had been given a little lift when we beat Bristol Rovers - honestly - in the then Coca Cola Cup.

To get back to my point about Spring's penalty. Was that the little bit of luck every team and manager needs at some stage in a season? I don't mean about the award - Bournemouth head coach Sean O'Driscoll said everyone in his camp knew it was a penalty, and the culprit had owned up and apologised. Nagging away at the back of my mind was that while the Town were playing decent attacking football there was not too much sign of an abundance of confidence once the ball got into or near the penalty area. Would we have got a goal, and a win, but for the rashness of Richard Hughes of Bournemouth? Who knows. But for sure, we needed it, not least to settle the nerves and restore a bit of self-belief.

Ricky Hill, of all men, would not deserve to chalk up a "worst-ever" scenario as he began his career as a manager. Two defeats in his first two games were not pleasant, but he can take consolation, as I do, from a few lessons of the recent past.

I have joined in the bar room debates about the rights and wrongs of appointing a highly popular player as manager, when his only coaching experience in this country is with youth squads, at Sheffield Wednesday and Spurs.

"Remember Terry Westley," cried the natural-born worriers. OK, but I go back a bit further, and remember Harry Haslam, David Pleat and Jim Ryan, who all found themselves thrust into the hot seat with no real experience, just a belief in their own ideals and abilities. Thankfully, each was proved right, to the huge delight of the fans.

Happy Harry came to Luton to be commercial manager. He was in charge of scouting at Craven Cottage when he, Bobby Robson and Roy McCrohan had been sacked by Fulham. Alec Stock gave up the manager's job at Luton in the summer of 1972 and Haslam, by then chief scout, was the choice to replace him. His first game in charge was a 2-1 defeat at Cardiff, but we went on to enjoy a reasonable campaign, with a possible promotion push wrecked by a wretched season at home, with only six league wins to cheer us up at Kenilworth Road. Still, we finished 12th in the old Division Two, and

Haslam got it gloriously right a year later, even if our promotion to what is now the Premiership lasted only one season on that occasion.

When Haslam left to go Sheffield United midway through the 1977/78 season, various names were discussed about a replacement, and it was a real mystery to most fans why a man they had scarcely ever heard of got the job. David Pleat had been youth coach, and reserve team coach for a couple of weeks before Haslam's departure.

The directors took a chance - and you don't need me to tell you how David Who? became a household name. But he did not have much of a start as a manager: 1-1 at home to Bristol Rovers was his kick-off match in a second division season where home goals were in short supply. We lost the next three - 0-2 at Blackburn, 1-4 at home to Spurs and 0-2 at Notts County.

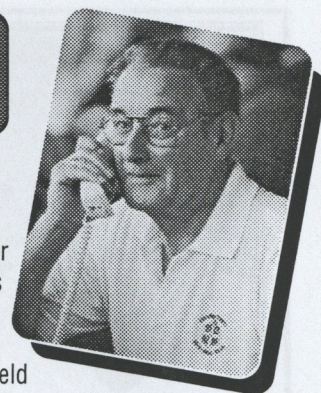
But Pleat's record as manager of Luton will always be admired, with the Second Division championship team he built in the early 80s as good a Luton side as I have ever seen. It was a magical time to be a Luton supporter, and Ricky Hill, of course, was part of it.

John Moore followed Pleat, and had a decent start, 1-1 away to Leicester, and a 2-1 and a 0-0 in home games with Southampton and Newcastle. And that, of course, was the old First Division, and while Moore did not enjoy being manager, and resigned after only that single year in the job, he too has his place in our history - and deep in our affections for lots of other reasons - by taking the Town to their best-ever season in terms of results. We finished seventh as Everton won the title, with Liverpool runners-up, followed by Spurs, Arsenal, Norwich and Wimbledon. Behind us were Nottingham Forest, and our friends in Hertfordshire. Manchester United were 11th, and Manchester City were relegated, along with Leicester and Aston Villa.

Ray Harford followed Moore, and did well for us, particularly at Wembley in April 1988, but his start was wretched - no win in the first five league games of the season and only two points collected, from home games with West Ham and Arsenal. A 5-2 away win at Oxford in the sixth game was a turning point, and of course towards the end of the season two semi-final cup-ties with Oxford led to some wonderful memories.

Jim Ryan was next in the hot seat, and again it was a bit of a gamble - another highly popular and talented player from earlier times, he was youth coach before being chosen to succeed Harford. His opener was an excellent 2-2 draw at Liverpool, but there was to be only one win in the next five league games and the crowd's love for Ryan was being well tested. In the event, he and the team gave us another day to remember, with a survival special, 3-2 at Derby on the last day of the season. We escaped relegation on goal difference, with Sheffield Wednesday dropping to Division Two despite matching our 43 points.

Sure, a good start to a season, or to a career, is much prized. But as we have seen, it's not the end of the world if you have time to put things right. Speaking of which, that horrible start in 1996 I mentioned earlier was the forerunner of something I would settle for again this season - we finished third. I trust we can do something similar this season, with, of course one major change, a play-off victory!



**Brian Swain**

### First team Pre-Season Games Statistics (All Away matches & Luton score first)

22/7/00 Bromley 5-2	22/7/00 St Albans City 1-1	24/7/00 Welling Utd 1-0	31/7/00 Grimsby Town 1-1
2/8/00 Hull City 1-0	4/8/00 Rushden & Diamonds 5-1		





## The Player Profile



This is the fourth in a series of interviews with the Luton Town players. We have chosen Ricky Hill's first signing and his former team-mate Mark 'Steino' Stein from AFC Bournemouth.

## Mark Stein

We welcome him back to Luton Town, and it has been a pleasure to chat with him.

**The Early Years:** Mark left Cape Town in South Africa, together with his family at the age of two, and went to live in Paddington and then Willesden in London.

Mark's Dad was a boxer, and his seven sons all loved sport. Mark played football and cricket, and at fifteen could have joined the ground staff at Northamptonshire, but was swayed into football through watching brother Brian playing at Luton.

He had started work as a spray painter/panel beater when David Pleat offered him full time training with the youth team as a YTS player. "John Moore was Youth Team Coach then and he was hard but fair. With players like Mitchell Thomas and Tim Breacker, who were

### Other Clubs:

great players and really good to watch, and who helped the younger players a lot, I count these as the best times in my football life. David Pleat signed me on contract on my eighteenth birthday".

After a couple of years Mark felt he wanted to be a regular first team player and he joined QPR, where he found the players were not nearly as good as Luton's, and later moved to Brian Horton's Oxford, and then Stoke City, "Where it took off for me! We won the Autoglass final at Wembley, where I scored the only goal. That was great! Stoke were promoted the next season, and I scored 33 goals!"

Mark joined Chelsea, who were struggling in the Premiership. He was seen as their saviour. Once he settled in he scored nine goals in seven or eight games and that Premiership record still stands.

After two years Mark went to Bournemouth, who were mid-table, and with no money they had to let him and other players go.

### Back to Luton:

Mark was considering an offer from Swansea when old friend Ricky Hill rang him. "I had no hesitation in coming back to Luton, where I'd had my happiest days. I still want to show that I'm a good player, even at 34, and I'm determined to score goals for Luton".

*Thank you Mark for taking the time to be interviewed.*

*Maureen Ingram - LTSC Committee Member*

## Town-on-Tour



Following the Hatters away, throughout the U.K.

Travel in Style with our Executive Coaches

League Games Prices & departure Times till the end of November 2000.

Date:	Destination:	Departure Time	Adult Member	Cons Member	Non Member
Sat 30.9.2000	Bristol Rovers	11.00	£12.00	£10.00	£13.50
Fri 13.10.2000	Cambridge Utd (8.00 K.O)	17.15	£8.50	£7.50	£9.50
Tue 17.10.2000	Oxford United	17.00	£8.50	£7.50	£9.50
Tue 24.10.2000	Oldham Athletic	14.30#	£14.50	£12.00	£16.00
sat 4.11.2000	Bury	10.00#	£14.50	£12.00	£16.00
Sat 25.11.2000	Port Vale	11.30#	£12.00	£10.00	£13.50

Coaches depart from Maple Road Car Park

(secure parking in Maple Road Car Park - Book your space at £3.00 per car on the day from the car park attendant. £4.00 per car if you are NOT a Luton Town Supporters Club Member

# Denotes a Milton Keynes Coachway pick up approximately 20 minutes later

Boarding commences 15 minutes before departure Service Station stops will be included on longer journeys





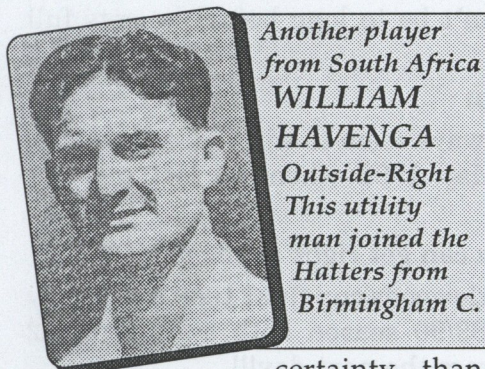
A Regular Feature on great Matches & Players from the past ...

# Hatters Classics

Part Eight - Hatters Silence Christmas Chimes  
- Season 50/51 -

The tingle of excitement that pervades the Third Round of the F.A.Cup descended on Luton in January 1951 when the Town faced Portsmouth who had been the English Champions for the previous two years.

It was a draw greeted with mixed emotions in Luton, for the town were then bottom of Division Two and supporters considered relegation more of a



Another player from South Africa  
**WILLIAM HAVENGA**  
Outside-Right  
This utility man joined the Hatters from Birmingham C.

certainty than progress in the cup. The Board, however, welcomed the game with open arms because gates had fallen to a despondent 14,000 and this seriously threatened the viability of the club. Determined that the game should be a financial success, the Directors told all the players to report to the ground in mid-week in order to clear a foot of snow from the playing surface; their one generous concession being Billy Cooke who had a broken arm, and they needed him to play on Saturday.

By the day of the match tons of snow had been piled high against the perimeter fencing and the pitch had been heavily sanded. When the illustrious Portsmouth team ran out to the tuneful singing of the "Pompey chimes" rendered by their travelling fans, Kenilworth Road resembled a patch of the Sahara Desert surrounded by a white wall of

Arctic ice and 25,000 supporters beyond.

Portsmouth were a powerful team, possessing a tough defence and lightning attack. Among their ranks were five or six internationals including the outstanding Jimmy Dickinson, a wonderful captain who eventually played 764 games for his club and a further 48 for England. Portsmouth's right half was another well known character; Jimmy Scoular, the Scottish International, with a reputation like Dracula, even if he did lack a little of the monster's charm. Up in the forwards Pompey had both the England wingers, the quicksilver Redfern Froggatt on the left and Harris, who would later become their record goal scorer, on the right, and the rest of the team weren't bad either. Luton though, were not exactly without hope because their form since the arrival of Willie Davie at Christmas had certainly improved, and their new-found confidence was evident from the very first whistle of this memorable match. Against the speed and precision of a powerful Pompey opening, Luton's defence was superb, with Owen looking head and shoulders above everyone on the rutted, sandy pitch -even the famous internationals.

Gradually the Hatters nullified the sting of the English champions and Willie Davie then took command. His accurate passes, supplied to Havenga and Glover on the wings teased and stretched the solid Pompey defence like a string bag of ever widening holes through which he, himself, nipped to smack in the Town's first goal on 24 minutes. When the mad jumping and hopping of the

A standard  
Luton prog  
from the actual match v Portsmouth  
F.A. Cup Third Round



celebration had finally subsided, Luton's tense fans wondered how on earth the Hatters would deal with Pompey's backlash and famous never-say-die spirit. The answer was found in a wonderful display of unified defending that completely

Inside-left

**WILLIE DAVIE**

A brilliant ball player who arrived from St. Mirren in part exchange with Kiernan and a big fee.



defied time and space to one of the best teams in the country - however hard they tried. It was sterling stuff by the Town that was crowned when Havenga finished off a neat move between Glover and Stobbart by thumping an unstoppable shot into the bulging net.

After that Luton defended what they had and Owen's captaincy and example against such vaunted opponents was quite magnificent - no wonder he was chosen to represent the F.A. at the end of the season. But Streten, Aherne and Cooke were all in top form too.

Having seen Luton beat the English Champions 2-0, it left fans with a rosy glow of contentment as they tramped home in the snowy darkness of that winters day in 1951.

**COME ON YOU HATTERS!**

Yours - Frank Batt - LTSC Member.



# MY FAVOURITE LUTON TOWN TEAM

Supporters Club Member - Ian Kelly



Raddy Antic' Who can ever forget 'That Goal' at Maine Rd Manchester in 82/83

**Name - Ian Kelly**

**Supporters Club Member no - 37**

I have been a Luton town fan for nearly 30 years. My first highlight was being a mascot in 1975 against Leicester City which nearly all town fans remember as the "Weller own goal" game. I was a season ticket holder after that until 1983 before then working on the turnstiles for the club for the last 17 years.

**First home game -** Oxford United - 30/8/72 Luton lost 1-0 at my first ever Town game

**First away game -** Orient - 28/10/78 Luton also lost this game 3-2

**Favourite player past -** Mick Harford. Big, strong, hard man who scored lots of great goals and should have played for England more times when at his peak.

**Favourite player present -** A hard choice as we have so many great youngsters at the moment in Liam George, Matthew Taylor, Matthew Spring but I think the most consistent player for me is Stuart Fraser. Surely it can't be to long before he gets full international honours for Scotland

**Grounds visited -** 76. I have only seen Luton play at 74 of them

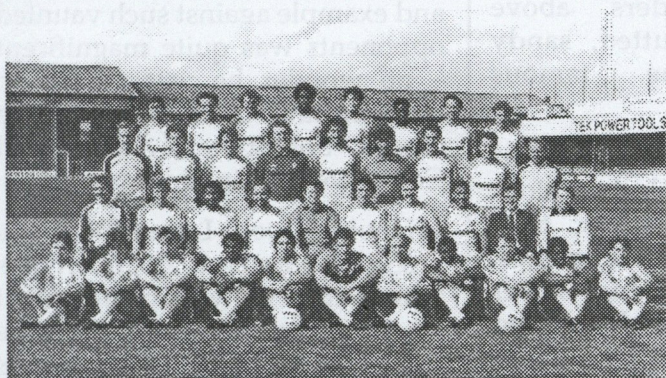
**Favourite away ground -** Notts County. The main reason is that we always seem to win there. Except of course the one Luton needed to win in May 1992 when we lost and got relegated

**Worst away ground -** Colchester United - terrible view unless you can get right at the front

**Most memorable match -** A difficult choice between Arsenal in the Littlewoods cup final 1988 and Derby County away in the final game of the 1989/90 season both ending in 3-2 victories and both giving me terrible hangovers the next day!!!

**Favourite goals -** I have 5 favourite goals and I would not like to pick a best out of Raddy Antic against Man City in 1983 with 5 minutes left to keep Luton up Ashley Grimes free kick v Oxford in the Littlewoods cup semi final in 1988. Brian Stein's last minute winner in the Littlewoods Cup final at Wembley 1988. Tim Breacker's free kick v Derby in that famous 3-2 win to stay up in 1990 Scott Oakes brilliant solo run beating 7 Derby men in 1994

**Favourite all time dream team -**



\*A good percentage of Ian's Favourites are from 81/82 Promotion team

- |                  |                    |
|------------------|--------------------|
| 1. Les Sealey    | Super-Subs....     |
| 2. Tim Breacker  | 12. Ian Feuer      |
| 3. Steve Buckley | 13. Paul Futcher   |
| 4. Brian Horton* | 14. Kirk Stephens* |
| 5. Steve Foster  | 15. Raddy Antic*   |
| 6. Steve Davis   | 16. Tony Thorpe    |
| 7. Ricky Hill*   |                    |
| 8. Brian Stein*  |                    |
| 9. Mick Harford  |                    |
| 10. David Preece |                    |
| 11. David Moss*  |                    |

## Editor comments..

What a team line-up.  
How much would that team cost to assemble 20 years on??

## QUICK FOOTBALL QUIZ *Answers on the last page*

- |  |  |
|--|--|
| 1. Which Nationwide League club put West Ham out of last season's F.A. Cup ? | 3. Who won last season's FA Trophy Final ? |
| 2. Who was Bristol City's leading goalscorer last season ?                   |  |



# The Ricky Hill Profile



- Joined Luton Town Football Club in 1974 on schoolboy forms.
- Signed apprentice forms in 1975.
- Became a professional in April 1976, scoring on debut v Bristol Rovers April 1976
- Division Two Champions 1981-82
- Full International debut 1982-83
- Littlewoods Cup winning team member 1988
- Littlewoods Cup runners up 1989
- Joined Le Havre in France 1989-90
- Returned to Leicester City 1990-91
- Joined Tampa Bay Rowdies in the American professional Soccer League (A.P.S.L.) 1992-93 Player/Coach leading the team to two National Championship Finals and being awarded the coach of the year by his fellow peers.
- Returned to America with Coco Expo's in Cape Canaveral in the U.S.I.S.L.
- Professional League again reaching the Championship Final out of 72 teams.
- Joined Sheffield Wednesday Football Club in July 1996 working with the under 19's.
- Left to join Tottenham Hotspur in July 1999
- INTERNATIONAL HONOURS:  
Three England Full Cap's
- QUALIFICATIONS: F.A. and U.E.F.A.

*Programme from Ricky's first league match*



*F.A.Cup  
semi-final  
Goal v  
Everton  
in 1985*



## PREDICT THE SEASON *Competition*

Well the new season has started again, and we're already hearing what the pundits think on all the teams and their players. So this season's competition is just that with a Luton spin on things. All you have to do is give us your views to each of the questions.

1. Luton's top scorer from October to the season's end.
2. Player to collect the most bookings from October to the season's end.
3. Luton's goal total for the season.
4. Number of clean sheets for the season.
5. Average home attendance for the season.
6. Final league placing.
7. Player with the most appearances for Luton this season.
8. Number of penalties Luton are given this season.
9. Luton's most used substitute.

Send us your answers numbered 1 – 9 no later than 7th October to:

### Predict the Season Competition

LTSC (004), c/o Luton Town F.C., The Ticket Office, Kenilworth Road, Luton, Beds, LU1 1DH

Alternatively hand the coupon below in at the Supporters Club Kiosk or to a steward on the Town-on-Tour Coach service. As usual we're be giving prizes to the most correct pundits, and we'll publish the winners names and answers in the summer newsletter.

### Predict the Season Competition Coupon

Answer RETURN BY 7th OCTOBER 2000

1. ....
2. ....
3. ....
4. ....
5. ....
6. ....
7. ....
8. ....
9. ....

NAME: .....

ADDRESS: .....

..... LTSC No. ....

### QUICK FOOTBALL QUIZ Cont... Answers on the last page

4. Which England player said this during EURO 2000 - 'We threw the game away'. 'The dressing room is a dismal place?' 5. Which premiership boss said - 'Referees act almost like policemen and the 4th officials are becoming jobworthy?' 6.. Who finished 7th last season in Div Two thus missing out on the play-offs?



# PREDICT-A-SCORE Competition FINAL TABLES

## IT'S NOW OR NEVER!!!

**W**e now lay the final chapter to rest, by bringing you the results of the competition for the end of last season. So are you a high flyer, or are you burying your head in the sand with shame? There were lots of movers and shakers in the league over the last few weeks, with some familiar faces competing for the top spot, and a certain Team Manager making the bottom position all his own.

So without further ado, congratulations go to Silverdome (I.White) for taking top spot from Harpenden Hatters (Roy Fielder) by 1 point. It was a close fought battle, and went down to the last game. Third place goes to Mute Celebration (Brian Ellis), ah the sound of silent celebrating!!!! The Wizard had a few tricks up their sleeves, by storming up the Beezer Home League into the Premier League. I hope it had nothing to do with that special potion!!!

How did the BTC Lad manage to remain at the bottom all the way through the competition, that is some feat. Could it be that he had some inside help, whatever it was it worked!!!! Sorry to see Toronto Tony spiralling out of control from the Premiership into the Vauxhall Conference, but only having a brief stretch in the Beezer Home League. Did those Thomas Terriers nip a few ankles to secure their place in the Second Division? I see the Orange Skoda also coughed and spluttered its way down to finish bottom of the Second division after a promising start.

So, Congratulations and Celebrations to our winners, I.White (the person without a first name), Roy Fielder, Brian Ellis and not forgetting our most successful loser Ashley Jones. Your prizes should have made their way to you by now, so thank you to everyone who took part.

### 99/2000 LEAGUE TABLES finished as follows:

#### PREMIERSHIP

Position	Name	Total points
1	SILVERDOME	27
2	HARPENDEN HATTERS	26
3	MUTE CELEBRATION	26
4	BYE BYE KOHLER!!	25
5	TOYBOY ENTERPRISES	25
6	HEREFORD UNITED	24
7	ANDY'S HATTERS	23
8	DARRYL WALL	23
9	HEROES OF '59	22
10	GILL'S JEWELS	21
11	OAK STEWARD	21
12	TEEN TOWN	21
13	FRENCH MEMORIES	20
14	IAN'S MINI HATTERS!!	20
15	KNEBWORTH PLAY IN ORANGE	20
16	OLD HATTER + 1	20
17	P.R.'S PREDICTIONS	20
18	WIZARD	20

#### DIVISION TWO

19	EYE WOAN TWIN	19
20	PORTISHEAD HATTER	19
21	WEASEL FAN CLUB	19
22	FORTY WATTS	18
23	ON THE UP	18
24	THOMAS TERRIERS	18
25	TINGEYS TIGERS	18
26	WAKEFIELD HATTER	17
27	HITCHIN ROAD '52	16
28	JUNCTION 10, 2001?	16
29	STEVO'S SUPERSTARS X1	16
30	THE OUTSPANS	16
31	TOP TEAM	16
32	GARLEY'S GIANTS	15
33	HARDWAY HUSSARS	15
34	HERVE'S GONE	15
35	LILLY RANGERS 2	15
36	SIMPLY THE BEST	15
37	TAYLORS TURNIPS	15
38	THE ORANGE SKODA	15

#### VAUXHALL CONFERENCE

39	AWAYDAYS	14
40	HAPPY HARRY'S HEROES	14
41	HATTERS & SAINTS	14
42	LINDA'S LIKELY LADS	14
43	THE DRYNECKS	14
44	THE MAGNIFICENT ELEVEN	14
45	LAZETTES	13
46	ROSEMARY SELLARS	13
47	TORONTO TONY	13
48	BASSETT RULES OK X1	12
49	JOHN KELLEY'S KIDS	12
50	LILLYWHITES	12
51	LONDON HATTERS	12
52	LUTONIANS IN LANCs	12
53	MUSSON'S HATTERS	12
54	NATIONWIDE DIVISION 2	12
55	THE STRAW BOATERS	12

#### BEEZER HOME LEAGUE

56	BRACKNELL HATTERS	11
57	CLASS OF '88	11
58	EXCRUCIATING CRUCIATES	11
59	HAWKHURST HATTER	11
60	M.A.S.T	11
61	NOBBY NOHOPE	11
62	RADDY ANTIC'S LEFT FOOT	11
63	ANTHONY SMITH HOPEFULS	9
64	LUTON MAD LAD	9
65	DAVE BEAUMONT FANS!	8
66	B.T.C LAD!	7

**WE APOLOGISE TO THOSE MEMBERS  
WHO TOOK PART AND HAVING TO WAIT UNTIL NOW  
TO SEE WHERE THEY FINISHED**

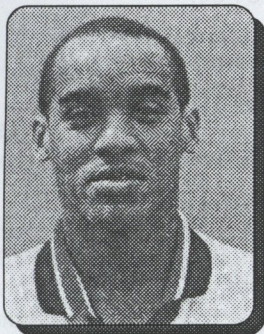
#### **NEW COMPETITION OPEN TO ALL LTSC MEMBERS**

For this season we have decided to create a new Competition called "Predict-the-Season". All you have to do is predict various statistics from the beginning of October to the end of the season. LOOK OUT FOR IT IN THIS NEWSLETTER, AND SEE HOW TO TAKE PART TO WIN SUPER PRIZES FROM THE LUTON TOWN FC CLUB SHOP



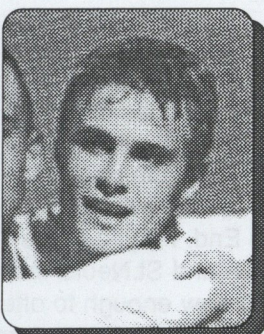
# NEW FACES AT LUTON F.C.

## A Look at Ricky Hill's New Signings



### **MARK STEIN** (Born Cape Town, 29th January 1966):

New manager Ricky Hill's first move in the transfer market was to secure the signature of his friend and former Luton team-mate Mark Stein. Hill and Stein link up once again having both been members of the Hatters' 1988 Littlewoods Cup winning squad. Stein was out of contract at Bournemouth in the summer, having scored 30 goals in 90 games for the Cherries, with several clubs including Swansea City and Peterborough United coveting his signature. But the diminutive striker opted to re-join Luton following the appointment of Ricky Hill as manager, and the addition of his brother Brian to the LTFC coaching staff. After an impressive pre-season, netting five times in four starts, Mark opened his Hatters account with a spectacular twenty-yard volley in the Worthington Cup tie at Peterborough, and his experience and goalscoring abilities could prove invaluable in our young squad.



### **PETER HOLMES** (Born Bishop Auckland, 18th November 1980):

Hill then returned to his former club, Sheffield Wednesday, for his first cash signing, bringing in 19-year old Peter Holmes for a nominal fee. A product of the FA School of Excellence, Peter was signed by Sheffield Wednesday as a youth trainee - where he worked under Ricky Hill in his time as youth team coach at Hillsborough - before signing professional terms in 1998. However, in his two years as a professional, he failed to make a single first team appearance, and with Wednesday's relegation from the Premiership necessitating a huge clear-out, his departure was always on the cards, with Ricky Hill moving fast to bring the promising youngster to Kenilworth Road. And so far, it seems to have paid off, with the skilful midfielder going straight into the first team squad, playing a part in six out of the seven first team games to date. Arriving on a three-year contract, Holmes is clearly one for the future, performing with aplomb in his favoured position, central midfield, as well as both wide midfield berths.



### **DEAN BRENNAN** (Born Dublin, 17th June 1980):

Another player to previously have worked with Ricky Hill, 'Deano' also arrived from Sheffield Wednesday in the summer, on a free transfer. The 20-year old looks to be another useful acquisition, as he can operate as an attacking midfielder, winger or forward player, and has already been involved with the first team squad. He was snapped up by Wednesday as a youngster, signing from Dublin youth side Cherry Orchard along with current first-team star Alan Quinn, with senior management at Hillsborough believing Dean to be marginally the better prospect. A prolific goalscorer at youth level, including a hat-trick against Nottingham Forest in the semi-final of the FA Alliance Cup, Dean was rewarded with a professional contract in 1998. But he failed to break into the first team squad at any time, and was considered surplus to requirements as part of Wednesday's summer clear-out. Played in several pre-season friendlies whilst trialling with Luton in the summer, scoring in the 5-2 win over Bromley and convincing Ricky Hill to offer him a two-year contract.

### **FRIEDRICH BREITENFELDER** (Born Vienna, 16th June 1980):

Austrian utility player signed on a free transfer in the summer on a one-year contract. Started his career at Rapide Vienna, where he made occasional first-team appearances and was once named in their Champions League squad. However, he was unable to command a regular place in the team, and he eventually moved on to Casino Bregenz, a lower league Austrian club. Shortly after this he was on the move again, signing for FCM St. Polten, but in March 2000, his new club went bankrupt, leaving all of its players out of work. After trying his luck in his home country, Friedrich decided to look for a club in England, and came to Luton Town for pre-season training, playing in a friendly match at St. Albans, where he did enough to earn a contract. There was some confusion as to his real name, as he was entered on the official teamsheet as Ratz Fetz, but his Hatters team-mates seem to have settled on the nickname 'Fritz'. Can operate in central defence or midfield, where he is very controlled and deliberate in possession, and has already forced his way into first team contention, being named in the squad for the visit of Northampton Town.

As we go to print the club have just taken on four more trialists, one of which have been recommended by former favourite Raddy Antic who is now manager Spanish club - Real Oviedo



# NEW FACES AT LUTON F.C.

Review on Ricky Hills New Signing to date cont...



## MARK OVENDALE (Born Leicester, 22nd November 1973):

Big money signing, arriving from AFC Bournemouth for £425,000 on the eve of the new season, the capture of goalkeeper Mark Ovendale is a testament to the ambition of Mike Watson-Challis and his board of directors to bring the glory days back to Kenilworth Road. Many supporters were surprised to see this amount of money spent on one player – the most since the £400,000 paid for Phil Gray in September 1997 – but Ricky Hill was concerned that there was only one experienced goalkeeper on the club's books, and made the position his priority. Mark was approached on the recommendation of his former Cherries team-mate Mark Stein, and although the Town's initial bid for the player was turned down, they persevered and finally got their man. And so far he has looked a real bargain, justifying the money spent on him with a succession of excellent performances. Formerly with Wisbech Town, Northampton Town and Barry Town before joining Bournemouth, the 26-year old was signed on a three-year contract.



## TOMMY CARTER (Born Bermuda, 9th July 1977):

Edgar Davids look-a-like midfielder signed on a three-month contract after impressing manager Ricky Hill when on trial in the summer. Bermudan international, who was capped twice while still a student, Tommy studied for four years at the Old Dominion University in Virginia, USA, before starting his football career with Academia de Tahuichi in the Bolivian league. Deciding to try his luck in Europe, he came to England with his countrymen Steve Astwood and Tokia Russell, trialling with Luton Town and Preston North End. Played in pre-season games against Welling United, St.Albans, Hull City, Bedford Town and St.Neots Town, scoring three goals in total, he improved with every game, and Ricky Hill saw enough to offer him a short-term deal. Currently trying to persuade his manager that he has a more long-term future at the club, Tommy began his Luton career in fine style, netting the winner in the reserves' league cup clash with Peterborough. The flamboyant midfielder has yet to make the first team squad, but has already become a favourite with supporters for his majestic performances in the pre-season games.



## PETER THOMSON (Born Bury, 30th June 1977):

Six foot three striker signed from Dutch first division club NAC Breda one month into the new season. With Ricky Hill concerned about the lack of firepower in the club, especially with Stuart Douglas and Andrew Fotiadis nursing hamstring injuries, he considered a big, powerful centre forward a priority to compliment the speed and trickery of Mark Stein and Liam George. After running the rule over a number of home-based players, Hill decided to look to the European market to overcome the problem of the inflated domestic transfer fees. And he finally found his man in Thomson, inviting him over to train with the club, and seeing enough to justify spending £100,000 on the player, signing him on a three-year contract. Peter started his career as a youth trainee with his home-town club, Bury, but he was given a free transfer without appearing for the first team. He then joined Chorley, before being signed by Lancaster Town, where he was top scorer in the whole division, netting 24 times in six months, including a goal against Northampton Town in the early stages of the FA Cup. Northampton boss Ian Atkins made an offer for his services after this game, but instead he opted to join NAC Breda for a £25,000 fee. Unfortunately, Peter broke his leg after just five games for the Dutch club, but has now returned to full fitness and is hoping to be the man to solve the Hatters' goalscoring problems.

Research kindly compiled by LTSC member - Patrick Johnson

## LUTON TOWN S. C. COMMITTEE - 2000/1

LTSC President	- Nick Owen
LTSC Vice-President	- Brian Swain
Chairperson	- Mark Chapman
Vice/Deputy Chair	- John Pyper (N/L Editor)
General Secretary	- Trish Johnson
Membership Secretary	- Vic Fussell
Treasurer	- Ian Kelly
Press Officer/ Deputy Gen Secretary	- Maureen Ingram
Luton Town F.C. Representative	- Cherry Newbery
Town-on-Tour Co-ordinators	- Various members as listed

## Additional Committee Members:

Yvonne Fletcher, Marilyn Fussell, Adrian Shotbolt, Peter Tullio, Peter Hosier, Ray Lelliott, Wendi Arnold, Andy Finch, Christine & Audrey

We are always on the outlook for new committee members, especially to assist us with our 'Town-on-Tour' away travel service. If you have been a LTSC members for more than one year and are interested in helping out in some capacity, visit our kiosk on first team homes games or drop us a line at the normal address as given on the membership form

**Run by supporters for supporters!**



## MEMBERS LETTER PAGE

### Luton Exhibited

At the A.G.M. on the 17th July 2000 I suggested the Supporters Club organise a heritage week so that fans could exhibit their memorabilia. This proposal proved fortuitous as Cherry Newbery announced the club was about to open an archive room. As a statistician I feel its creation is long overdue as I understood that previously the Town's entire history, had been stored in a BOILER ROOM! This poses the questions on how well kept are they and what if anything was destroyed. In the past other clubs were notorious in not preserving their history; neither were libraries. So it's a wonder that so many football club histories have been written in the past twenty-two years.

My idea would be for fans to exhibit autographs, pictures etc. for the weeklong exhibition and perhaps if any artefacts proved important to the club archives then the owner could be encouraged to donate it, with perhaps the offer of a plaque with their name on it. I would hope in time supporters could be encouraged leaving their collections to the club. It would be hoped such collections might include the odd Cap or Medal or even rare Minute books, after all there is an old saying, "We cannot take it with us"!

Just think of all those loyal old supporters whose collections were just thrown out by their families as junk! So would it not be a good gesture for the club if it truly feels its roots were in the community, in conjunction with the museum to encourage supporters to donate their memorabilia. I think such a scheme would be unique for a professional club.

To demonstrate how I think it could work, I know of an elderly fan

who recently sold a large part of his cigarette card collection for a fraction of it's worth. He also owns a massive collection of programmes pre-war, along with Scrap books, Autographs etc. What will happen to his collection if his children and grandchildren do not want it.

*Brian Ellis - LTSC Member  
Address supplied*



#### Editors comments

This would be a great idea for the Club & LTSC to hold as a one off or to see if this could be incorporated into the new stadium as a permanent exhibition within a club museum. *Your thoughts are welcome on this subject.*

### Luton Town's attendances are up!

The 1999-00 season may not have lived up to expectations on the pitch, but off

It attendance's went up from an average of 5,527 in 1998-99 to 5,658 in season

1999-00, a rise of 2.4%.

1998-99 5,527

1997-98 6,501

1996-97 6,781

1995-96 7,223

A five-year review suggests that a good league run as in 1996-97 will give Luton the rise in support they enjoyed a few years ago. *B.Ellis*

### Who is this player??....

*The clue is within this newsletter*



### Postbag.... Postbag

**Luton Programmes wanted and for Sale....**

Can you help this Gillingham supporter who is a collector of his Clubs' memorabilia? One he requires is the Luton v Gillingham (League Cup 1st Rd. 1st leg) 14/8/1979. If you can help contact Mr. Midmore at 26 Jubilee Crescent, Arlesey, Beds. SG15 6SB. or telephone 01462 835848.

#### Programme for sale...

This collection consists of over 500 Luton H&A's from the 1967-1992. He is willing to sell the who collection for £250.00 ONO or sell them individually. Contact Nigel on 07967 440884.

### STOP PRESS...STOP PRESS

As we go to press, the football club have announced they have invited a new director onto the board. This being the high-profile Graham Kelly, the former secretary of the Football League and more recently the chief executive of the Football Association. He has been out of the football limelight for the past two years, writing his autobiography and becoming journalist for national newspaper. It has been reported that his position will be as a non-executive member but will be an ambassador to assist the club in their new stadium plans ...see local media and programme for more info.

### FORTHCOMING LTSC EVENTS

We are still awaiting confirmed dates for two guest speaker evening due in the next two months. We have lined up the New Luton Chairman and Manager to face the Supporters club members.

As soon as we know we will advertise these dates in the LTFC prog and local media.

*It will be two very popular meeting so it will be LTSC members ONLY.*

### QUICK FOOTBALL QUIZ ANSWERS

Answer 1. Tranmere Rovers 2. Tony Thorpe 3. Kingstorian 4. Alan Shearer after England surrendered a two goal lead v Portugal in Euro 2000 5. John Gregory of Aston Villa 6. Bristol Rovers

Hope you got six out of six.. but unfortunately there is no prize for the competition.

### We want your contributions...

Something to say? Why not write a letter or an article for this newsletter. If so, send to the normal address as given in this publication J.P.