

price: 20 pence



LUTON TOWN YEAR BOOK 1972-73



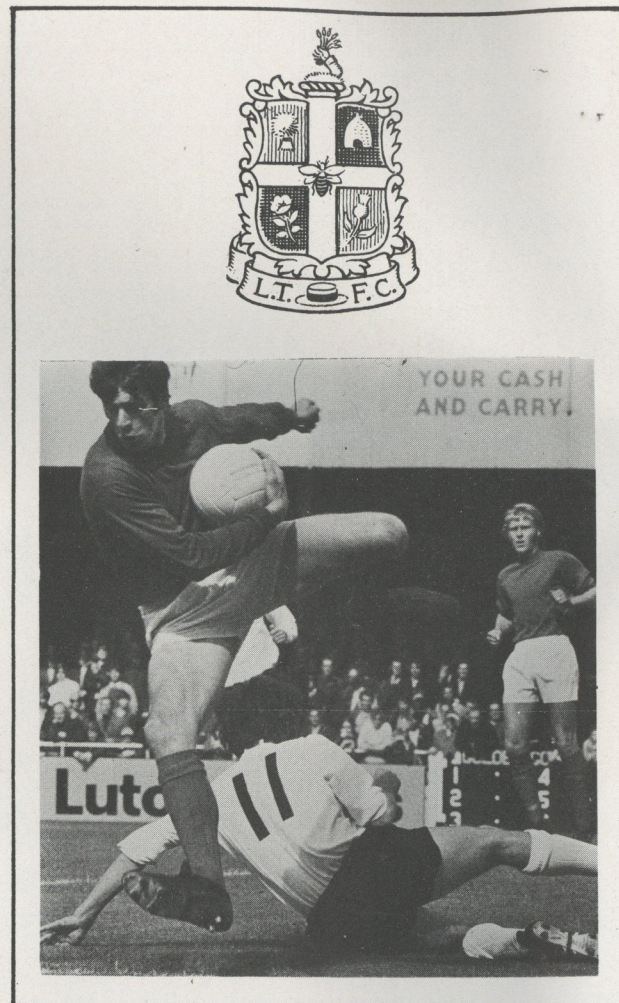
Front Cover photograph: Eric Morecambe, Club Director and President of the Supporters Club; is seen with John Ryan, "Player of the Year" and Molly Miles "Supporter of the Year".

All other photographs in this Year Book are reproduced by courtesy of the Evening Post.

Design and Layout by "Eye" Luton and printed by Murray & Taylor, (Printers) Limited, Dunstable.

CONTENTS

	Page
Introduction	3
From the Chairman	3
Harry Haslam, Manager	4
Supporters Club Notes	6
Eric Pugh Talks	8
Roy McCrohan, Chief Coach	8
Roger Duckworth article	9
Junior Section	10
The Presidents	11
John Ryan, Player of the Year	12
A History of the Bobbers	12
Molly Miles, Supporter of the Year	13
Competition Corner	14
Snippets	15
The Branches — Reports	23
Arrivals	25
Departures	26
The New Clubs	28
Facts and Figures	30
Fixtures	34
Forthcoming Events	34



INTRODUCTION

Several years have passed since there has been published for sale to the general public a Booklet containing news, facts, figures, photographs and general information about LUTON TOWN FOOTBALL CLUB. This applied not only to the past season, but what is more important, plans and prospects for the coming season. The Executive Committee of the Luton Town Supporters Club felt there was a public demand for more information about the Football Club so with this in mind it was agreed to publish a 1972/3 LUTON TOWN YEARBOOK.

It has been my privilege to have been given the responsibility of collating articles, news, gossip, photographs, and in some instances writing snippets, that has been included. I would like to thank all contributors who have submitted material especially the Chairman of the Club, Mr. ROBERT KEENS, The Manager, Mr. HARRY HASLAM, Chief Coach ROY McCROHAN, Eric Pugh of the "LUTON NEWS", and lastly but by no means least, ROGER DUCKWORTH of the "EVENING POST". Without the assistance, help, guidance and material provided by Roger it would not have been possible for me to have been able to have produced such an interesting publication.

Readers once they have read the notes of the Chairman, Manager and Chief Coach will then realise that everyone within the Club is enthusiastic about the prospects for the new season and also that a wonderful job of work has been done during the close season by securing players of such a high calibre as RODNEY FERN, JOHN ASTON, and BOBBIE THOMPSON plus of course players who at the moment are not quite so well known to the majority of fans. WILLIE CARRICK, LES HARFIELD and STEVE LITT. This of course is only the beginning as Manager Harry Haslam has promised there will be further strengthening of the team. It must now surely, be evident to all that "The wind of change" has swept across Kenilworth Road. The Club are planning for their part to provide entertaining football for the spectators so it is therefore the duty of all match attendants to drop their SPECTATOR role, and become at all times 100% fervent SUPPORTERS of LUTON TOWN F.C. Give the players the encouragement they so rightly deserve in return for their efforts and I'm sure as we have witnessed on past occasions, even when the results seem to be going against us that good vocal support can often "Turn the Tables" and bring about the RIGHT RESULTS.

To the Chairman, Board of Directors, Manager, Coaches, Players and all connected with the Club every success during the coming season and may all the plans you have laid down come to fruition.

To all Supporters of LUTON TOWN F.C. may I say AT ALL TIMES throughout the season make yourselves vocally heard, keep behind the lads with your encouragement for I'm certain we are going to have the most entertaining and enjoyable season witnessed for a long time. Here's hoping all our dreams in relation to the Clubs success come true during the 1972/3 season.

John K. Smylie.

This magazine is presented and published by LUTON TOWN SUPPORTERS CLUB.

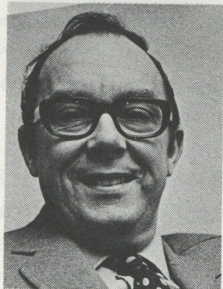


ROBERT KEENS
(Chairman)



LEN HAWKINS
(Vice-Chairman)

THE BOARD



ERIC MORECAMBE



JIM RICHARDSON



JOHN BAIN



REGGIE BURR



DENNIS MORTIMER



ROGER J. SMITH

From THE CHAIRMAN

This is the first year that I have had the opportunity to discuss our future prospects through the medium of our Supporters Club Handbook.

It is always a difficult task to talk about a forthcoming season before a ball is kicked, because we can never be sure of our true strength until our new tactics have been tested under match conditions. Our pre-season optimism and dreams can so easily be shattered by just a few unfortunate results at the start of the season.

However, after the difficult times for both the Club and our supporters of last season, the Board is delighted with the progress that has been made under our new Management team of Harry Haslam and Roy McCrohan. In a remarkably short time, Harry has been able to recruit several well known players of proven ability in the face of stiff competition from other Clubs, including some from the First Division.

Roy has been putting the players through a very strict training routine, with everyone giving 100 per cent effort.

This combination has resulted in a renewed sense of urgency and drive which

has permeated throughout the Club. We, in the Boardroom, are only too aware of the need to produce an exciting and entertaining team on the field, to bring back many of our supporters, who faded away last season.

We are acutely aware of the disappointments suffered by our supporters last season and we intend to make every effort within our limited financial resources to attempt to provide you with better results. We are providing new floodlights and for your consideration, a new strip and badge all of which we hope will be on view when we welcome Newcastle United and particularly Malcolm Macdonald, to Kenilworth Road in the Autumn.

I can assure you that everything possible is being done in every department of the Club to fulfil our objective of providing our supporters with an entertaining, match winning brand of football, that will take us back to the First Division, whether it be this season or the next.

I AM CONFIDENT THAT WE ARE IN FOR A GREAT SEASON.

Robert Keens.
Chairman.

The Sandhouse Inn

A LA CART & TABLE D'HOTÉ MENU'S.
WINES TO SUIT EVERY TASTE.

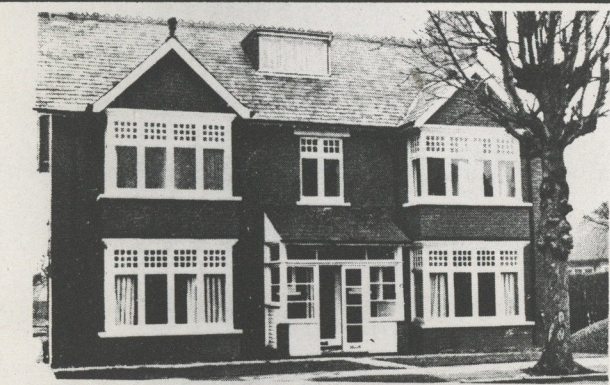
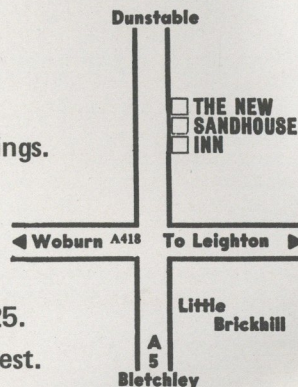
Phone HEATH-&-REACH 396
FOR RESERVATIONS

We Now Cater For:

- ★ Wedding Receptions.
- ★ Dinner—Dance
Wednesday Friday Evenings.
- ★ Business Conferences.
- ★ Private Parties.
- ★ Business Lunches.
- ★ Sunday Lunches from £1.25.
- ★ Organist Supplied on Request.
- ★ Ample Car Parking.

You will have no parking problems when visiting the Sandhouse. Facilities are available to cater for up to 70 people at conferences weddings and parties, etc. Our resident organist can be supplied on special request.

We have lunch and dinner extensions which allow customers an extra half-an-hour's drinking time at lunch and an hour at dinner.



WHY NOT TRY OUR NEWLY EXTENDED
21 BEDROOMED HOTEL
& OUR EXECUTIVE ROOMS AT THE

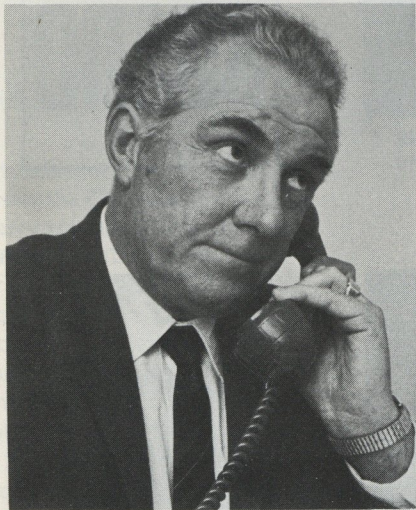
Grange Hotel

10 Compton Avenue, Luton, Telephone 52996

Licensed Bar • Centrally Heated
Comfortable Lounge with Colour Television
Wedding Receptions, Functions, Etc.,
Large Car Park in hotel grounds
Bed & Breakfast • Excellent Cuisine • Evening Meal

Ideally Situated for Visitors to the Town
With Easy Access to :- The M.1. and Luton Airport
Railway Station (Main Line to London)

HARRY HASLAM



manager

Hello everybody,

Here we see the start of a new season, and once again we carry a great deal of hope that we can play football that will not only be attractive, but bring us in the right results.

Changes have been made in every way possible, myself and Roy McCrohan both being "new boys" in our new jobs, but after having worked together before, I am sure that with the assistance of Ken Whitfield, we can get down to the job of making a really good unit.

New lights are another change we are making, which we hope we can use about September-October, and for that date we hope the Team to open the lights will be Newcastle United, who are managed by a great friend of mine, Joe Harvey, and of course included in his team will be Bobby Moncur and Tony Green, but most of all our old favourite "Mac". Malcolm will be as pleased as anybody to come back and play once again at Kenilworth Road. This, we feel, will be a big night and one to remember.

We have also made plenty of small changes in and around the Club, but these are mainly to do with the running of the Club.

I felt it only fair to mention the fact that over a season a great deal of work is put in by people who rarely get a mention, and into this category comes our two popular

Club Doctors who, believe me, take some stick, but after a summer away from it all, Dr. Chris Buckingham and Dr. Peter Burrows, will soon be back in full harness again. Also in their department is Reg Game, the physiotherapist, who is always there when needed and plays a big part here over the year. Whilst talking about people who fail to get a mention, Eddie Hartley and his staff deserve my praise for the ground conditions and the general outlook around the ground. "Keep at it lads".

Horace Vass and his bar staff also deserve a mention for the way they get into the swing of things and keep you supporters happy by serving you quickly and efficiently. Also all our dear ladies who look after you at our Tea Bars, their work for us is priceless. Les Richardson and his staff in the Hatters Club are always pleased to receive members and see to your needs. Thanks again, Les.

Mike Skinner and his staff of programme and ticket sellers also play a part that is seldom mentioned, but once again they are an important part of our Club.

To all our gatemen and stewards, thanks for all you have done and we hope our efforts will keep you very busy this season.

Of course, "our Bob" Readhead and his Assistant John "Sexy" Wilkinson, along with Judy Morvan who makes sure we keep up to date with our correspondence, and "Long John" Whiting, our Accountant, all go together to make a grand team of their own, but to us they are invaluable, thanks to you all for your support.

Our Supporters Club in the Bobbers Stand also deserve a special mention for the fact that they have run for years and constantly raised money for us on behalf of the Senior Club. Thank you once again to the Committee and Members of the Bobbers Club.

Also there is our new Luton Town Supporters Club, who are moving out to the outside areas with branches creating interest in the Senior Club. Thanks again to their Committees and Members for their efforts which are growing daily.

Our Vice Presidents Club must also be mentioned for they are playing a part in bringing our Club strength in all directions. Thank you to their Committee and Members.

I really felt that it was my duty to thank all the above people for

what they have done and above all to let them know that they are a big part of my plans in the future, for all these departments working together makes my job all the easier.

My last word of thanks must be to the Football Supporters in general who come along every week and in many cases travel away with us. I sincerely hope that you will give us the same backing this season by cheering the lads on to what we hope will be success.

As regards to players this season, especially the "new boys", my wish is that they settle in very early and easily and I am sure that you can play a big part in this by the kind of welcome they get, which in turn I hope will make them pleased they listened to me and joined Luton Town F.C.

Now I would like to say a few words about the future. By the time that you get the chance to read through this Handbook, I hope I will have been able to secure the players I feel will do the job we need doing.

For my aims are really simple, but to get down to putting them into practice was not possible until we strengthened our playing staff. It is quite obvious that to get goals is our big aim and as we all know this can become very frustrating when they don't come as we expect. We are going all out to try to get the lads in the frame of mind that goals do count, so to attack with flair means that from time to time you leave the door open at the back and you get a goal down, and that is when I feel you the supporters count, for if the lads hear you cheering them on I am sure this goes a long way towards them lifting their heads and getting stuck into the opposition once again.

We have got some very good youngsters coming along, I only hope that you will spare the time to come along and give them the encouragement they need, for these youngsters are a very vital part of our future, for one day soon they will be carrying the Club's hopes, and when that day arrives the Football Club can feel proud that it has produced a very large percentage of it's players.

Thank you and best wishes to everybody and may you enjoy your football at Kenilworth Road in the coming season.

Harry Haslam.

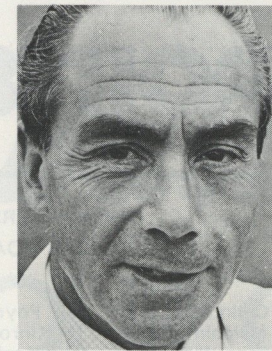
& STAFF



BOB READHEAD
Secretary



JOHN WILKINSON
Assistant Secretary



REG GAME
Physiotherapist



JOHN WHITING
Accountant



KEN WHITFIELD
Coach



EDDIE HARTLEY
Groundsman



LES RICHARDSON
Manager Hatters Club



Sportsman in the know

ROGER DUCKWORTH'S VERDICT

AND MATCH REPORT

EVERY SATURDAY

SPORTS POST

The SUPPORTERS Club

SOCIAL HEADQUARTERS: THE HATTERS CLUB, MAPLE ROAD, LUTON.
CLUB SHOP: 125, OAK ROAD, LUTON.

COMMITTEE
CHAIRMAN Colin Ball. 65, Poynters Road, Luton. Tel. 63043
VICE-CHAIRMAN Malcolm Aubrey. 2, Kinross Crescent, Luton. Tel. 58738
SECRETARY John Wilkinson. 70, Kenilworth Road, Luton. Tel. 23151
TREASURER Tony Long. 57D, Norton Road, Letchworth. Tel. 3651
PUBLIC RELATIONS OFFICER John Smylie. 44, Wadhurst Avenue, Luton. Tel. 25796
YOUTH LEADER Bev Tyler. 4 Holliwick Road, Dunstable. Tel. 68760

BRANCHES
AYLESBURY Secretary: D.A. Baker, 8, Madeley Road, Aylesbury, Bucks. Tel. 85272.
BEDFORD Secretary: D. Ashpole, 7, Tithe Barn Road, Wooten, Beds. Tel. Bedford 51821.
BLETCHLEY Secretary: D. Keyes, 7, Orchard Close, Bletchley, Bucks. Tel. Bletchley 3623.
NORTH HERTS. — SOUTH BEDS. Secretary: J. McCracken, 162, Rushby Mead, Letchworth, Herts.

Our Supporters' Club has been in being for just one year and it is both customary and opportune at this time to look back at our achievements.

Firstly, we must examine our aims and objectives. In principle we have tried to create and develop active support, through organised effort, for the football club. Several, indeed many, different forms of social activities have been tried with varying degrees of success, but underlying all these efforts has been the success or failure of the team on the field of play — good results mean satisfied supporters; there is no disputing this fact.

However, results vary and not all teams can be successful — we have to learn to accept failure as well as success and failure is something our supporters have not been accustomed to in recent years.

What I am really saying is that the indifference of the team during the period under review was very much reflected in the support given to the efforts of the various committees in the Supporters' Club. Our first ever Six-a-side Tournament, generously sponsored by the Luton Motor Group, was undoubtedly our most successful venture, and we shall be organising another Tournament again during the coming season, this one, we hope, will be even more ambitious than our first effort. Interest was undoubtedly stimulated by our President's gifts of two handsome cups and his contacts in the Show Biz world which produced a "Show Biz Side".

Our Grand Dance, held on Thursday evening in Dunstable, was certainly regarded as socially worthwhile, but financially, much less so. We believe we have learned from our mistakes here, and have planned to hold a similar function in 1973 on a Saturday evening. The dual awards of Player and Supporter of the year aroused a great deal of enthusiasm, and we hope we shall be able to encourage many more to come along to our Presentation Dance next year. Without doubt, had we been "knocking on Division I's door" when the Dance was held we would have been crowing about our successful Dance but this was not so, quite the reverse, in fact.

On reflection, we were struggling — our support down to a nucleus of just around 10,000 at home, and less on some occasions. This is really the crux of the matter. The real way to evaluate success and assess our achievements is how can we encourage our supporters to perform their true function of supporting a less-than-

successful team? I believe it is possible to raise the whole morale of a side by sheer enthusiasm. I say this being mindful of the home game with Portsmouth last season, when, after being two down at the interval, we went on to win 3-2. The supporters played a very big part in this victory. Admittedly, there were times last season when there was too little to cheer and be enthusiastic about, but there were also too many occasions when our crowd was not only unenthusiastic but gave vent to their feelings by the "slow hand-clap".

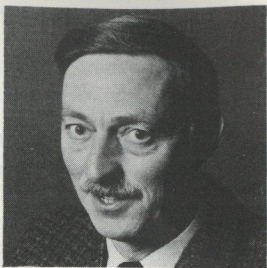
The one exception to this was the very loyal band of vocal supporters at the Oak Road end. They may occasionally resort to crudities and some unrefined comments, but they are supporters in the true sense of the word. The rest of the ground should note them well.

If I pose the question "What do the supporters want?" I know the answer will be a good team, a winning team, but how do we achieve this — with good players, good coaching, good management? Yes, of course, all this and more — an enthusiastic body of supporters who will cheer and sing and encourage their team in every possible way, to success, real handsome success. This is what we, the Luton Town Supporters must do — help to raise the efforts of the team, be proud of the Club, push them along on a positive wave of enthusiasm — this is a large part of the recipe for success. Given this, Harry Haslam will do the rest. Each season brings its surprises — this new one will be no exception, but I believe that this coming season is going to see our team once more on the road to success. This we must believe and strive for from the onset.

Why not join us in this venture in the new season? Join the Supporters Club, enjoy what facilities and advantages we can offer, but above all, come along and support Luton Town, and if you feel willing and able to help our Committees in any way by trying to organise or help in anyway, then please do so. How? Contact myself or any of our Executive Committee, or if you are out of Town, then work through our Branch Committees — details are in this our first Year Book. We need a lot of help to make this one of the best Supporters' Clubs in the Country.

Good luck to the Town, and here's to success to Harry in this his first full season as team manager.

Colin Ball.



COLIN BALL



MALCOLM AUBREY



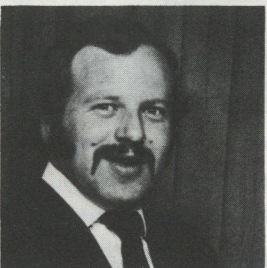
JOHN WILKINSON



TONY LONG



JOHN SMYLIE



BEV TYLER

get on the ball....

WITH YOUR COPY OF OUR 1972/73 'MERRYMAKER' PROGRAMME

<from stations and agencies>



British Rail

London Midland

the all in one store for....



DRAPERY . FURNISHINGS . TOYS & SPORTS
BOOKSHOP . FOOTWARE . HARDWARE
ELECTRICAL . MEN'S WEAR . HOUSE
WARMING CENTRE AND FUEL ORDERS
CATERING . OFF LICENCES . GROCERY,
GREENFRUIT AND BUTCHERY DEPART-
MENTS

With Credit Facilities to suit your requirements.
Provident and Barclay Cards Accepted.

PLUS DIVIDEND STAMPS
SUPERSTORE
4 NEW BEDFORD ROAD
LUTON Tel: LUTON 21171 (ANSAFON)
LUTON CO-OPERATIVE SOCIETY LTD

PUGH

eric

Sports Editor "The Luton News"



Since the end of last season, far-reaching changes have taken place at Kenilworth Road, both on the administrative and playing side, and all the signs are that they will add up to more success than was achieved last season.

Then, the Town, often too defensively minded, seemed to be suffering from the continuing hang-over caused by the fact that they no longer had Malcolm Macdonald to provide the striking power.

Preparations for this campaign, made assiduously by the new manager, Harry Haslam, during the summer, have all been aimed at turning the team into a more positive, more attractive combination.

Target, of course, is to achieve consistently good results and to draw back the crowds, so sadly missing last season, to Kenilworth Road.

Considering the fact that there was not really any money to spare and that such sums as were spent had to be recouped eventually by the sale of players already on the

staff, Mr. Haslam has achieved wonders.

He has brought here players like Rodney Fern and John Aston, well-known and experienced in First Division football, and others who are expected to play a notable part in the coming months.

Whatever the final outcome might be, certainly the Town can only be congratulated on the way in which they have tackled the problems that were so apparent during last season.

For their courage, they deserve to prosper and, certainly, they will not fail for lack of initiative or the willingness to take over an attacking role.



When I was asked to become chief coach to LUTON TOWN F.C., I had no hesitation in accepting the post. Having spent the last three seasons at Ipswich Town as assistant coach, I was delighted to have the opportunity to take on a more responsible position. Especially as I had previously worked with Harry Haslam

at Fulham.

This man, who always seems to be laughing and cracking jokes, is a very shrewd manager, who is determined to bring First Division Football to the Club, and I feel my experience in a First Division Club over the last three seasons should help in that direction.

With the arrival of the new players, Rodney Fern, John Ashton and Bobby Thompson, all of whom have had First Division experience, and the new policy of positive attacking football whenever the opportunity arises, I feel sure we can succeed.

These three new arrivals along with the players who were at the Club last season, will make up a squad, which will be a match for any team in the Second Division.

The new training schedules I am introducing at the Club, will include weight training, and I am sure the players will find them very hard, but interesting and enjoyable.

Finally I should like to say that everyone on the staff will be hoping to play the sort of Football that you the fans want to see. PLEASE GIVE THE LADS YOUR FULL VOCAL SUPPORT THROUGHOUT THE GAME, and we will try to produce plenty of Goals for you to cheer about.



ROGER DUCKWORTH

SPORTS EDITOR — Evening Post

EVERY TIME I set foot in Luton before this season got under way, I was asked how the Town would get on in their first season under Harry Haslam.

Not being psychic, I had to answer: "I don't know. But I THINK they will do well".

And it's easy to tell people why I thought they would have a good season.

For a start manager Harry Haslam is all out to show the football world what he can do. He's the new broom in the Second Division, and his ambitions could well sweep the Town up the table.

At the time of going to press the Luton manager had scooped his colleagues in the race for the signatures of Manchester United's John Aston, Leicester's Rodney Fern and Birmingham's Bobby Thompson.

These were all splendid signings. During the summer they were the turning point for the people of Luton who had been disappointed at last season's showing. They were the signings that set people talking about Luton again.

But it's not just the new people that makes me think Luton will have a good season. It is also the depth of talent in the side.

Apart from Birmingham, Millwall and perhaps Burnley, I don't see a great deal to be afraid of in the Second Division. So let's have a quick look at the main strengths of the Luton line-up, bearing in mind that there are more signings promised.

In goal Keith Barber hopes to really establish himself as a class keeper. He shared the limelight last season with Tony Read, who has gone part time. Keith's understudy will be Willie Carrick who joined from Manchester United during the summer.

With John Ryan and Bobby Thompson expected to take the brunt of the full back duties, there are going to be scraps in midfield for places for Don Shanks, along with Alan Slough and Robin Wainwright.

After last year's lack of scoring power Fern and Aston will be welcome additions to the attack. And with Graham French expected to be taken back into the fold, this will provide even more attraction. As well as these players, we will have so many of last year's stalwarts fighting for their places.

It's not just on the playing side that Luton are looking up. The addition of Roy McCrohan as chief coach was a shrewd move by Mr. Haslam when he had to find a replacement for the popular Jimmy Andrews.

Early results will be important, but if this confidence can be transmitted from the club to the spectators, via the supporters' club, then Luton Town could be back on the road to the top.

VICE-PRESIDENTS CLUB

During the past season changes were made, following the majority vote of members, to the constitution of the Club. The effects of which were:—

1. Seats in the Vice-Presidents Balcony were not transferrable. The tickets could only be used by the person in whose name it was purchased.
2. Changes were applied for and granted by the Licensing Justices whereby persons under the age of 18 years would not be allowed under any circumstances into the Club Room.
3. Each member would in future, be allowed to invite one guest into the Club Room for a drink, with the proviso that the guest is signed in by the member and does not purchase any drinks, but shall have them bought for him or her.

Two successful Dinner Dances were held in the Hatters Club. One in December and one in March. For all his hard work and organisation in ensuring the success of these functions our thanks are extended to Mr. Tommy Marlborough. In December last year it was agreed to organise a Football Pool lottery whereby members could purchase 25p units in a weekly treble chance permutation. The minimum number of units that could be held was two — one in the name of the participant and one in the name of the Club. The scheme ran for a total of 18 weeks, the net result at the end of this time, apart from the small return to each participant was the handing over to the Football Club of a cheque for a total amount of £113.

It is interesting to note that had one more point been obtained in

our penultimate week's entry a cheque of £11,000 could have been presented to the Club. With this in mind, it is the sincere hope of the committee that ALL members of the club will this year participate in the scheme, thus increasing our total stake and also the hope that we can really make a worthwhile contribution to the parent club.

Another venture organised was the staging on the Town's ground of three wrestling promotions. The dates of the bouts were July 8th, August 5th and August 19th.

With the commencement of the 1972/3 season we are entering what your committee envisages will be the most progressive year since the inception of the Vice-Presidents Club. However, progress can only be achieved with the full co-operation and participation of each and every member. The Football Club management have really given us reason to be enthusiastic about the coming season by the calibre of the players they have purchased. It is now up to all of us to be prepared to assist the Club in every way possible by "supporting to the hilt" all functions, fund raising activities and of course with full vocal support to the lads on the field of play.

To Harry Haslam and all the players we wish every success in the coming season.

F.H. Kenneth Ball

SPORTS TROPHIES AND ENGRAVERS LTD.

SAVE ON YOUR CUPS, MEDALS, PLAQUES ETC.



BROWSE AROUND OUR SHOWROOM.



WE HAVE THE LARGEST SELECTION IN BEDFORDSHIRE.

SPORTS TROPHIES AND ENGRAVING CENTRE

27, UPPER GEORGE STREET, LUTON,
TELEPHONE: LUTON 23177.

Telephone: 64331/2

BUNTY-COSTIN COACHES

12 to 53 SEATER LUXURY COACHES FOR HIRE FOR TRIPS TO

- ★ SEASIDE RESORTS
- ★ THEATRES
- ★ FOOTBALL MATCHES
- ★ PLACES OF INTEREST, etc.

REGULAR EXCURSIONS TO MOST AWAY MATCHES

Just write, 'phone or call

67 West Street, Dunstable LU6 1SU
29 Leagrave Road, Luton LU4 8HT
5 Mins from Luton Town Ground.

Luton Town Supporters Club

JUNIOR SECTION

YOUTH LEADER: Ben Tyler
DEPUTY LEADER: Paul Ashby
COMMITTEE: Tony Ashby, Peter Cross, Ian Ball, Derrick Hartley, Sue Potter, Jane Burrows, Laraine Aubrey, and Val Miners.

We are now entering our second season as a Junior Supporters Club and one it is hoped will be even more interesting than the last one as the committee and I have been working hard on a new and more varied programme for this coming year. During the summer months we have been meeting at the Kingsway Recreation Ground and there members have been playing football and rounders with other local clubs who have also been meeting on the same evenings as ourselves.

The club hope to enter a football team for boys under 13 years of age in the Luton & Dunstable Junior League and one team in the Chilton Youth League for boys of 14-16 years of age. Both of these teams

will be playing their games on a Sunday and it is hoped to get one or more of the Luton Town F.C. Players to come along and give the teams some training and coaching. As we will be playing throughout the winter months we hope in the first season to achieve a good league position.

During the winter months the club night is held in the Hatters Club at Maple Road, from 7-9 p.m. on every Monday except the first one in each month. Amongst the activities members can enjoy and join in are table soccer, table tennis, chess, draughts, volley ball and from time to time there will be evenings devoted to the showing of football and cartoon films. There will also be score a goal competitions, social functions and dances.

I will be introducing a pen-pal club and this should arouse some

enthusiasm from both boys and girl members alike. This will provide the means of obtaining some good football news and views from countries abroad and in particular Sweden where we already have a number of members.

If you are under the age of 18 years and would like to join our new and exciting club then you can do so by completing the application form printed below, and return it to 125, Oak Road, Luton together with a remittance fee of 30p. The membership year for Juniors is from January to December.

All the indications are that Harry Haslam is going to have a new and more exciting team this season for us all to support so we would like to wish him and his players every success in the coming season. Hopeful that we shall reach the ultimate goal — DIVISION I.

JUNIOR SUPPORTERS CLUB

Application for membership.

Full Name

Full Postal Address

.....

Date of Birth



Harry Haslam meets his new signings at Kenilworth Road. From the Left: Les Harfield (on a two-month trial from Southampton), Bobby Thomson (from Birmingham City), Rodney Fern (from Leicester), Mr. Haslam, Stephen Litt (from Blackpool), John Aston (from Manchester United) and Willie Carrick (also United).

The picture was taken when the Luton players met for the new season in July.

the PRESIDENTS

MEET Luton Town's two presidents — Eric Morecambe, president of the Supporters' Club, and Tom Hodgson, president of the Football Club.

ERIC, one of the country's top television personalities, has proved himself a most valuable member of the club since he joined the board three seasons ago.

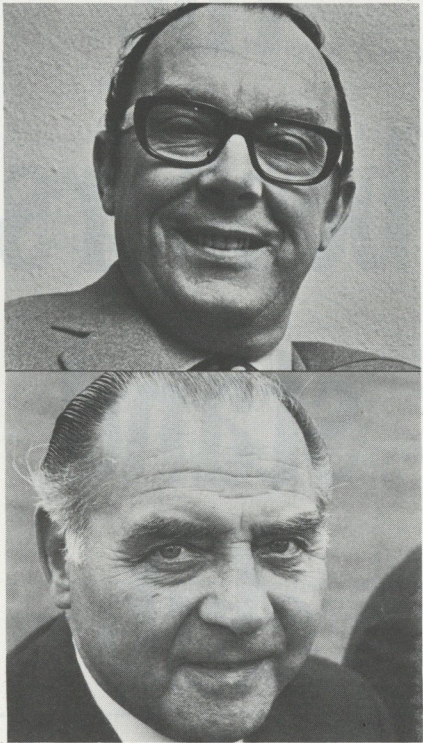
He quickly took an interest in the supporters' club, and is now one of the key figures in its success story.

Eric takes the chair at sports forums when the various branches meet in a combat of questions. His popularity and natural wit make him an instant hit with the fans.

Ever since he came to Kenilworth Road Eric has been a big favourite. Never remote, he is always ready to have a chat with the Town fans whether it is on a long train journey to an away match or from his seat in the stand.

His popularity on television has helped to make Luton an even bigger name. He gives the lads a plug at every opportunity. Eric, who likes to play golf and enjoys bird watching during walks in the country, collects antique clocks.

But his biggest interest of all is — Luton Town.



TOM HODGSON is one of soccer's most honoured statesmen. He holds a unique position in that he is the only man in football to have been player, captain, director, chairman and president of the same club.

In the 1920s he joined the Hatters from West Ham where he had had a distinguished career as a player. He soon established himself as a rugged full back, but injury called an early halt to his career.

The highlight of Tom's soccer life came in 1959 when he led the Town out at Wembley in the FA Cup Final against Nottingham Forest. He did the job as Luton were between managers at the time.

Tom left the Luton board last year to become president of the club. He now lives in retirement on the northern boundary of the town, not many yards from the Warden Tavern where he was once licensee. He later held the licence at the Old Bell, Harpenden.

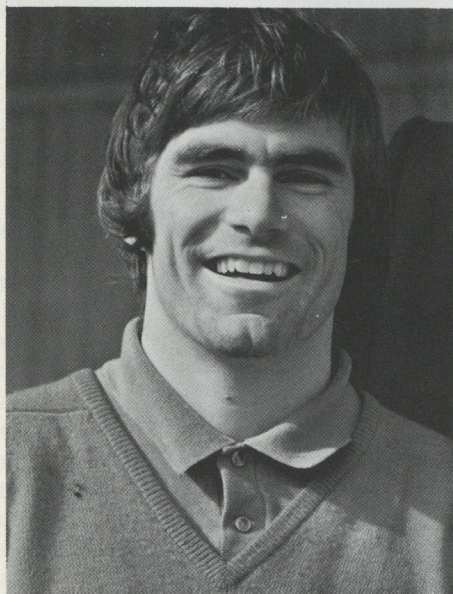
His son Keith is a hotelier in Portugal where the Luton president is able to take long holidays in the sun. But he makes sure he is always around when Luton Town, the club to whom he has given a large chunk of his life, are playing football.



At 'Home or Away' travel by

 **British Rail** **London Midland**

John Ryan



PLAYER OF THE YEAR

On Thursday April 13th last during the evening of the Supporters Club Buffet Dance held at the Civic Centre, Dunstable the 'PLAYER OF THE YEAR' award for the 1971/2 season was announced. The nominees considered for the years award were the results of a joint ballot taken between the members of the Bobbers Club and the Supporters Club. The eventual declared winner, and this incidentally by a considerable majority was JOHN RYAN.

The privilege of presenting the trophies to John fell to the Secretary of the Bobbers Club, Mike Ogden. Judging from the tremendous reception given to the winner as he made his way to the stage to receive his awards the decision was a most popular one amongst those present at the function. Reflecting back on last season and in particular in so far as John's performances are concerned, what can one say. His enthusiasm, ability and consistency throughout surely said it all. Nothing I'm sure aroused the fans more than when he would gather the ball in his own penalty area and make off down the wing to either centre it to his fellow team mates waiting in the goal mouth, or for he himself to have a go at goal. I suppose the climax for most fans came when at the end of the season he was switched to the number 10 shirt. What a dream introduction that turned out to be. Playing in his first game at Fratton Park, Portsmouth on April 15th he scored two great goals to give the Town a thoroughly deserved win.

Apart from his football activities John has been busy establishing himself in his own business venture. As most readers will know he now has opened his own Boutique and Gentlemens Hair Styling Salon at 19, Inkerman Street, LUTON. The Boutique is well worth a visit, not only to see his glamorous manageress Rosemary but also to purchase or browse around at the wide and varied selection of items he has in stock. All age groups are catered for Children, Youths and Adults so if any of you have not yet been along to him then please do so. John will be more than delighted to see you all. Apart from the Boutique an equally warm welcome is extended to anyone visiting the Hairdressing Salon where John has engaged two of the best stylists in Luton — 'JOHN & TONI'.

Outside his playing and Boutique commitments John is also a really enthusiastic worker for the Supporters Club itself. Not only is he the sponsor of the Senior Members weekly discotheque but he is also a most willing worker for the Junior members of the Club. No request for assistance is ever too much trouble for him and there is nothing he would not do to assist the younger set. John for this we thank you sincerely and from all Supporters everywhere may we say 'well done', you thoroughly deserved to be the 9th recipient of the 'PLAYER OF THE YEAR' trophy.

For the record previous holders of the trophy were:—

Season 1963/4	John O'Rourke
Season 1964/5	Colin Tinsley
Season 1965/6	Matt Woods
Season 1966/7	Graham French
Season 1967/8	Terry Branstom
Season 1968/9	Alan Slough
Season 1969/70	Malcolm McDonald
Season 1970/1	Chris Nicholl
Season 1971/2	John Ryan

Season 1971/2 was the inaugural year for a new award to be contested for annually—'SUPPORTER OF THE YEAR'. This is a really magnificent and modern designed trophy, and one which in future years, will become a highly sought after and coveted award all supporters of the Club will be trying hard to win.

Through the media of the local press Supporters Club members were invited to submit nominations for the person they considered should become the first winner of the trophy. A considerable number of entries were received and of these a large number came from several miles outside the Luton area. This was indeed very encouraging to know that we are gathering our support from such a wide range.

Of all the entries submitted the person who received the majority number of votes and whose name is now the first on our new trophy was MRS. MOLLY MILES, of 65, Churchill Road, Leighton Buzzard, Beds. The presentation to Molly was made by the person who only a few minutes prior had himself been announced the winner of the 'PLAYER OF THE YEAR' award — JOHN RYAN. As with John's award this also took place on April 13th at the Civic Centre, Dunstable.

A few words about our winner. A loyal and faithful follower of the Town for the past 27 years, she has travelled many thousands of miles up and down the country supporting LUTON TOWN F.C. Not only first team but also reserves and friendlies. At all games she provides the lads with chewing gum and at Christmas each year she bakes and presents a Christmas cake. This she says is her way of saying thank you to the team and officials. Talking recently to her and listening to her reminiscing about the past she told how a few years ago a shy young lad (Molly's own words) and his friend would come up to her at each home game and ask — please Mrs. Miles will you take us into the ground

Molly Miles

with you so we can watch the game. A request she was only too willing to grant. That young lad is today none other than the Town's star player ALAN SLOUGH. Alan is not the only one who has been chaperoned into the game by her over the years it has happened quite often. Furthermore, there are still a number of ex Town Players who regularly contact or correspond with her. Proof undoubtedly of what a really sincere and wonderful person she is. Good luck to you Molly and long may you support, and appear at each home game in your favourite and now well established spot at the foot of the players tunnel.

One other member of the Miles household we must mention, husband John, for it was his persuasion initially that took his wife to see her first game at Kenilworth Road. Another staunch supporter for more years than he would have us mention, he used to travel from Leighton Buzzard by cycle. Later when the Railway used to run from his home town to the old Bute Street station in Luton he would use that. Now the only means of transport is the local bus service or receiving a lift by car.



SUPPORTER OF THE YEAR

Mrs. MOLLY MILES, "Supporter of the Year", in company with John Ryan, "Player of the Year" and Eric Morecambe, Luton Town Director, appears resplendent in full colour on the front cover of this magazine.

A HISTORY

In the early 1930's it was decided to extend the SMALL UNCOVERED TERRACE to an increased capacity covered stand. Name it THE BOBBERS STAND and charge a BOB admission — hence the name 'BOBBERS'. When this extension was proposed the late President Mr. P.W. Wright with a committee and a body of men helped to excavate the chalk and soil, and build the present BOBBERS STAND CLUB underneath.

As the club was built in sections, tea bars were built underneath the MAIN STAND for the sale of teas, minerals and chocolates. When the first bar was completed in the Bobbers Club it was known as THE TOP BAR and minerals, teas and chocolates were sold there in conjunction with the other Tea Bars.

As the club was nearing completion the TWO BARS were fitted out and completed and oak panelling was put into the LOUNGE BAR by Messrs. J.W. Green Ltd., the Luton Brewers at a nominal charge. On the completion of the CLUB it was named the LUTON BOBBERS STAND CLUB and the yearly membership fee was a BOB plus 2d for the membership card and this fee remained the same until 1972.

A licence was granted to sell Beer, Wines and Spirits etc., and this has proved a great asset to the progress of the Club.

the bobbers stand club

A HISTORY

In 1934 it was decided to cover the OAK ROAD TERRACES and call it the OAK ROAD STAND. This again has proved a great success.

During the Second World War many of our members joined H.M. Forces, some unfortunately never returned.

Although faced with many problems the Club continued to progress and in 1955 the Largest Donation in any one year £6000, was given to the parent Club to purchase a STAR PLAYER from the North. In 1967/8 tip-up seats were provided for the whole of the main stand at a cost of £8500.

In addition to all of these efforts mentioned many thousands of pounds have been given to the parent club since the LUTON BOBBERS STAND CLUB's formation.

We welcome any football supporter to pay us a visit and see how the club is managed.

Thanks must be given to our PRESIDENT Mr. L.S. Hawkins and the Committee and Staff for their hard work and wonderful support in achieving success over the years.

The Committee and Members of the LUTON BOBBERS STAND CLUB wish the LUTON TOWN FOOTBALL CLUB a very successful 1972/3 season.

Are YOU a member of OUR Club ?

If not then why not complete the membership form and join the thousands of other Town Supporters who are enjoying the benefits to be obtained. Listed below are some of them:—

A Guaranteed ticket for all 1st Team Home matches.

Membership to the Hatters Social Club (this alone would cost £1). An Official Yearbook containing all the information that you require to know about Luton Town F.C. and Supporters Club.

Periodic Newsletters containing all the latest Club News, Views and Gossip.

Generous Discounts on New and Used Cars. (Information available upon application).

Membership fee — £1 per Year.

15% Discount on all purchases from John Ryan Boutique at 5 Chapel Street Luton.

LUTON TOWN SUPPORTERS' CLUB SEASON 1972/73

APPLICATION FOR MEMBERSHIP

FULL NAME
(Mr. Mrs. Miss)
FULL POSTAL ADDRESS

.....
.....

DATE OF BIRTH

CAN YOU COLLECT YOUR NEWSLETTERS FROM 125, OAK ROAD, LUTON WHEN THEY ARE AVAILABLE.

YES/NO

(Delete where applicable)

Completed forms together with a remittance fee of £1 should be mailed to:—
John K. Smylie, 125, Oak Road, LUTON.

competition corner



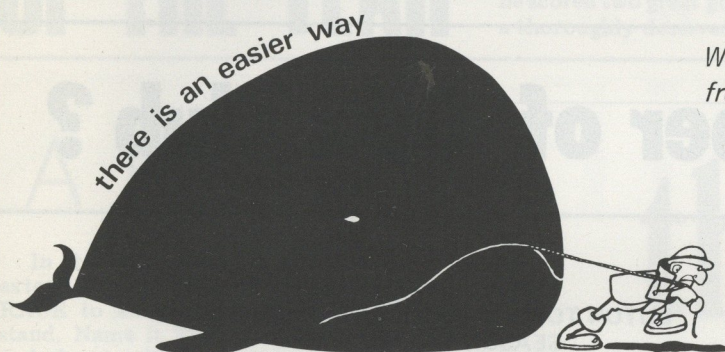
test your memory

This photograph was taken from one of last season's home games. Can you answer the following four questions?

1. WHO WERE LUTON'S OPPONENTS?
2. WHAT DATE WAS THE GAME PLAYED?
3. WHAT WAS THE FINAL RESULT?
4. WHO IS THE LUTON PLAYER WHOSE FACE IS BLOTTED OUT BY THE BALL?

If you think you know the answers then submit them together with a 3p postage stamp to John K. Smylie, 44, Wadhurst Avenue, LUTON, Beds. to arrive not later than 31st October, 1972.

The first all correct entry received after the above date will receive a stand ticket for the Queens Park Rangers game on Saturday 9th December 1972.



We will be pleased to deliver any of the following items free of charge within a 25 mile radius of our premises

Blockboard — Asbestolux — Plywood — "Henderson"
Sliding Door Gear — Louvre Doors and Georgian Doors
Georgian Door Surrounds — Hardboard Grillwork
Royal Hardboard — Timber — Fencing-Interwoven and
Trellis — Cedar Cladding — Brass Knobs and Knockers
"Pella" Folding Doors — Sauna Baths — Bow Windows
Timber and Mouldings — Celotex — Gyproc Plasterboard
Fire Resisting Doors

We also offer a comprehensive milling service

all this and a lot more from

LILLYWHITE (DUNSTABLE) LIMITED

Skimpot Road, Luton, Beds.

Telephone: Luton 53306

LILLYWHITE (LEAGRAVE) LIMITED

Leagrave Road, Luton, Beds

Telephone: Luton 52140



Recollections from last season's Match Reports
by Roger Duckworth
Sports Editor — Evening Post





LUTON TOWN 1, NORWICH CITY 1.
Gate 12,428
August 14th 1971

LUTON started the campaign against the eventual champions, and they could well have beaten the Canaries who looked fond of spoiling tactics.

There was no score at half time, and Luton looked like taking both points when Don Givens banged in a 70th minute penalty.

But well into injury time Graham Paddon also converted a penalty. This was ironic, for it was exactly the manner in which Norwich had grabbed a point at Carrow Road the previous season.

It was interesting to note that Alan Garner, who ended the season as one of the stars of the side, should start it as sub before fading out of the picture for several months.

BURNLEY 2, LUTON TOWN 1.
Gate 13,333
August 21st 1971

THE TOWN got a bit of a run-around in their first trip to Turf Moor for many years. Burnley looked a most accomplished side, and were being tipped for a quick return to the First Division from the early stages of the season.

Luton held out for the first half, and skipper Mike Keen was unlucky not to score with a terrific shot. But Frank Casper and the speedy Steve Kindon thrashed in two goals in three minutes early in the second half.

Viv Busby pulled one back in the 65th minute, but Luton were unable to do anything more, and Alan Slough was booked as the Town became desperate in their vain efforts to equalise.

LUTON TOWN 1, PRESTON NORTH END 1
Gate 11,772
August 28th 1971

THIS was a significant match for Luton in that it brought about the debuts of left back Don Shanks and midfield player Robin Wainwright.

Both gave worthy performances, but Luton were unable to stop Bombay-born Ricky Heppellette giving Preston a 29th minute lead.

Peter Anderson equalised in the 71st minute and at the same time Jim Ryan was sent on for Viv Busby. John McMahon, the Preston full back, was booked, and manager Alan Ball sent on long-serving Davie Wilson for Clive Clark in the second half.

OXFORD UNITED 1, LUTON TOWN 1.
Gate 10,490
September 1st 1971

LUTON'S third draw in four matches came at the Manor Ground on September 1. It was a match that started sensationally, but fell away to a boring kickabout.

Don Givens smashed Luton ahead with a close-range shot in the eighth minute, and Luton looked to be all set for their first win of the season.

But four minutes later David Clark equalised, and from then on the match deteriorated. It was refereed by world cup official Jack Taylor.

David Court, who was dropped after the Burnley defeat was brought back to the squad as sub — but he was not called upon.

ORIENT 0, LUTON TOWN 0.
Gate 8,703
September 4th 1971

LUTON'S big problem later in the season was their inability to score many goals. This was again underlined at Brisbane Road when Luton and Orient fought out a dour goalless draw.

In an effort to do something about it Alan Slough had been playing in midfield for a couple of matches. But Luton could not score — and neither could Orient with Chris Nicholl and John Moore playing well at the back.

Luton did not call upon sub Jim Ryan, who had once again ousted David Court from the bench.

LUTON TOWN 0, BIRMINGHAM 0.
Gate 14,678
September 11th 1971

THE LUTON fans were already getting restive, and the biggest gate so far in the season was due to a large following from Birmingham.

The match was important as it marked the debut of centre forward Vic Halom, who had joined the Town for a £30,000 fee from Fulham.

Vic gave a wholehearted performance, but he could not pull Luton out of their goal famine. The Blues were eventually promoted to the First Division after finishing one point above Millwall. It makes an interesting thought that they might not have made it had Luton been able to find the net.



MILLWALL 2, LUTON TOWN 2.
Gate 12,433
September 18th 1971

TWO cracking goals from Peter Anderson won this point for Luton from a Millwall side who were among the pace setters all season.

This was a really worthwhile performance from the Town who found themselves a goal down in the first minute when Derek Possee scored from a right wing cross.

But seven minutes later Anderson equalised with a diving header.

The legendary Harry Cripps put the Londoners ahead with a penalty on the half hour, and Luton looked in trouble when Busby, who had been injured early on, succumbed to a swollen ankle at half time, and Robin Wainwright took over.

But Luton never stopped fighting, and Anderson rounded off the score with a brilliant shot from a narrow angle in the 70th minute.

LUTON TOWN 3, MIDDLESBROUGH 2.
Gate 13,001
September 25th 1971

LUTON, who had drawn six of their first seven matches were becoming known as the best bet on the football coupon, so it was with considerable satisfaction that their followers greeted their first win — at home to Middlesbrough.

The Town had looked in trouble again when big John Hickton gave Boro the lead after 10 minutes, but Halom equalised six minutes later with his first goal for Luton.

Wainwright put Luton ahead in the 54th minute and it looked all over when Anderson made it 3-1 with five minutes left.

But Boro were full of fight, and Maddren pulled a goal back with two minutes to go.

Both Alan Slough and Eric McMordie were booked.

Luton fans were sad to see a sorry performance from World Cup hero Nobby Stiles who limped off in the 22nd minute to be replaced by Laidlaw.

LUTON TOWN 2, FULHAM 0.
Gate 14,017
September 28th 1971

THINGS were really looking up when Luton won again the following Tuesday night, and the feeling in the Town was reflected in the gate which again rose to more than 14,000.

Luton again had an unlucky start when Anderson, who was among the goals, was injured early on. He was replaced by Jimmy Ryan in the 10th minute, and it looked as if Luton had a fight on their hands.

But after 14 minutes Wainwright put them ahead, and Luton coasted along until Halom scored his second goal in two matches to secure the points for Luton.

Fulham tried everything they knew, but even when they sent on Moreline for Dunne in the 72nd minute, they could make no impression on the scoreline.

HULL 0, LUTON TOWN 0.
Gate 13,904
October 2nd 1971

LUTON were proving a most difficult side to beat, and when they went to Hull on October 2, they underlined this with another good show. The no-score draw meant Luton had lost only one of their first 10 matches, and they were sitting well in the top half of the table.

But they were not having much luck with injuries. Busby and Anderson had both been left out with knocks, and in the second half Jimmy Ryan received Luton's worst injury of the season.

He dislocated a shoulder in the second half, and as a result missed most of the campaign.

He was replaced by David Court in the 77th minute, and Luton hung on for yet another draw.

Chris Nicholl was booked for an innocuous obstruction offence, by referee Morrissey of Bramhall.

LUTON TOWN 0, SWINDON TOWN 0.
Gate 13,423
October 9th 1971

ALTHOUGH top scorer Peter Anderson was able to return after injury, the Town's home match against Swindon produced nothing memorable.

Luton were becoming good at getting goalless draws. Busby had recovered from his ankle injury, and was called on to replace Halom in the 76th minute. But Luton could still not score against a tough defence moulded around Dave Mackay.

This was one of the last chances for Luton fans to see the old campaigner, for he has now decided to concentrate more on the managerial side of his job at Swindon.

He later took over from Fred Ford, who brought this side to Luton. Swindon centre half Burrows was replaced at half time by Jones.

After this game Luton were in ninth position with 12 points from 11 matches.

NORWICH 3, LUTON TOWN 1.
Gate 22,558
October 16th 1971

LUTON were unlucky to lose to the eventual champions. Alan Slough put them ahead in the 28th minute with a splendid shot from outside the penalty box, and Luton went in for their cup of tea sitting on their lead.

After a quiet start Gordon Hindson, who was making his debut for Luton, showed some good touches and a fine burst of speed.

But Norwich fought hard and Ken Foggo equalised in the 57th minute, and put Norwich ahead in the 76th.

Luton were still fighting for the equaliser when Howard scored Norwich's third with two minutes left. He had gone on as a 69th minute substitute for former Liverpool man Doug Livermore, who was a bargain at £25,000 when he went to Carrow Road from Anfield.

QPR 1, LUTON TOWN 0.
Gate 15,858
October 19th 1971

LUTON suffered their second defeat in four days at Shepherd's Bush — and again they can count themselves unlucky.

For it was well into injury time in the first half when Mick Leach hit a terrific shot past Keith Barber, who had replaced Tony Read after the victory over Middlesbrough.

Terry Mancini, who had just moved to Loftus Road, from Orient, had a particularly good game, blotting out any threat from Halom.

Don Givens was booked for a late tackle, and former Luton man John O'Rourke was replaced by Hunt in the 62nd minute. The Luton sub was again Court, who was finding it hard to get back into the side.

LUTON TOWN 0, CARLISLE 2.
Gate 11,963
October 23rd 1971

LUTON'S two successive away defeats at Norwich and QPR were reflected in the gate for their next home match against Carlisle. It was the start of the decline that was to be raised only twice during the season in home matches — to Millwall and QPR.

This was one of those matches when Luton could have done with a bit more support. Carlisle proved to be a good all round team who were not afraid of attacking away from home.

Bob Hatton gave them the lead in the 22nd minute, and try what they might, Luton could not equalise.

With 11 minutes left manager Alec Stock sent Viv Busby on for Peter Anderson, but this only served to perk up the northerners who scored their second through county cricketer Chris Balderstone two minutes later.

It was Luton's first home defeat of the season.

SUNDERLAND 2, LUTON TOWN 2.
Gate 17,979
October 30th 1971

AFTER a bad run of three defeats, Luton went north to face a confident Sunderland who were well placed in the League table.

It was a match full of incident, and Tony Read, who had come back in place of Barber, celebrated his return by having a fine match and by seeing Hughes put a penalty wide.

Watson had put Sunderland ahead in the 18th minute and Nicholl had equalised for Luton with a fine goal in the 57th minute after a thrilling match.

Then Nicholl deliberately handled in his goalmouth to concede a penalty. He was booked for his trouble, but it was all worth it when the penalty was missed. He had saved a certain goal.

Luton went ahead through Anderson in the 76th minute and McGiven levelled the score two minutes later.

Luton's Halom and Sunderland's Tueart were both booked in an exciting match.



LUTON TOWN 1, CHARLTON 2.
Gate 11,011
November 6th 1971

THIS was perhaps Luton's lowest performance of the season. Charlton, who were relegated at the end of the season, also beat Luton at the Valley later on to complete an embarrassing double against the Town.

Luton may have approached the match too casually. It looked as if they were on their way to an easy win when Mike Keen put them in front in the 14th minute.

It stayed that way until the second half when veteran Keith Peacock took over.

He hit two goals in eight minutes halfway through the half, and Luton were sunk.

Court had replaced Busby as the Luton sub, but again he was not called upon. Luton's old problem of being unable to score freely was again in evidence.

WATFORD 2, LUTON TOWN 1.
Gate 14,000.
November 13th 1971

LUTON were really down in the dumps when they went to Watford and lost.

Vic Halom had put Luton ahead in the 12th minute, and it looked as if they would coast to a victory against the bottom club.

But Watford's versatile skipper Keith Eddy levelled the scores in the 35th minute, and Luton had a fight on their hands.

Even so, they claimed that Colin Franks was well offside when he raced away to score Watford's winner in the 66th minute.

Middlesbrough referee Pat Partridge had other ideas.

Court made his first appearance for a long time when he went on for Busby in the 61st minute.



BLACKPOOL 0, LUTON TOWN 1.
Gate 8,432
November 20th 1971

WHAT an afternoon this was. And what a win for the Town. Luton beat every adversity to record their first away win of the season.

For a start their train was late due to a broken rail in south Lancashire.

The Luton players changed on the train, and when they drew into Blackpool North station at 2.45 p.m. they could just about make it. But there was a carnival in the streets and a wailing police car had to clear a path for the Luton coach.

As they ran out with a minute to spare, a raging blizzard struck up, and Luton gave everything they had to take a half time lead through Givens.

It is to their credit that they managed to hang on to their goal. Court returned to the Luton side and Halom was left out.



LUTON TOWN 3, PORTSMOUTH 2.
Gate 9,910
November 27th 1971

THIS was Luton's great escape act of the season. For after 39 minutes they were trailing to two fine goals from Richard Reynolds.

And after their mixed patch, this was a match Luton badly wanted to win. Should they lose at home it would nullify that fine win at Blackpool the previous week.

Pompey hung on to their lead until half time, and Luton, desperate for goals, sent on Vic Halom in place of Viv Busby.

Mike Keen scored for Luton in the 52nd minute, and five minutes later Gordon Hindson scored his only goal of the season, a tremendous drive from 25 yards to level the score.

There was a hectic finish in which Peter Anderson popped up with an 88th minute winner.

Because of injury to Milkins, Pompey had to call upon former Luton goalkeeper Jim Standen.



LUTON TOWN FOOTBALL CLUB 1972-73

Back Row Left to Right: T. Robinson, D. Hales, L. Harfield, G. Hindson, R. Hatch, V. Halom, B. Thompson, J. Faulkner, P. Price, P. Anderson, Jimmy Ryan, G. Jones, N. Sparkes.
 Centre Row Left to Right: T. Castiello, A. Garner, R. Wainwright, K. Goodeve, K. Barber, W. Carrick, T. Read, J. Moore, A. Slough, S. Litt, M. Gilchrist.
 Front Row Left to Right: Roy McCrohan (Chief Coach), John Ryan, J. Aston, Harry Haslam (manager), R. Fern, V. Busby, Ken Whitfield (Coach).
 Inset: D. Shanks.



BRISTOL CITY 0, LUTON TOWN 0.
Gate 12,921
December 4th 1971*

LUTON'S fifth goalless draw of the season, their 10th draw in 21 matches, came on a miserable day at Ashton Gate.

This was another of those poor matches with missed chances and dour defences.

Luton's John Ryan and Don Givens were booked for tackles on City players. It was Givens' second caution of the season, and again manager Alec Stock thought he was unlucky.

Luton did not call upon substitute Wainwright, and it was good to see Court settling into the side again.

LUTON TOWN 2, CARDIFF 2.
Gate 10,606
December 11th 1971

THE DRAW kings were at it again. Twice Luton went ahead. Twice the Welshmen equalised.

Cardiff were struggling to keep above Watford at the bottom of the table, but Luton were too kind to them.

Anderson kept up his scoring form by putting the Town ahead after 25 minutes, but Phillips equalised nine minutes later.

Luton manager Alec Stock resisted the temptation to send on Jimmy Ryan to add some sparkle to the attack, and with a quarter of an hour left Don Givens scored with a penalty.

But five minutes later Clark, Cardiff's leading marksman, made it all square again.

In the first half of the season Luton were in 13th position, where they finished, with the following record:

	P	W	D	L	F	A	Pts
Luton	21	4	11	6	22	25	19

LUTON TOWN 2, ORIENT 0.
Gate 9,192
December 18th 1971

LUTON left it late to beat Orient. It was not until the 62nd minute that Alan Slough burst through to put the Town ahead. Don Givens netted the second in the 83rd minute.

The second goal came two minutes after Anderson had been pulled off to make way for Jimmy Ryan.

Givens received his third booking of the season for alleged feet up against Bennett. It was more like 'head-down' by the Orient player, and manager George Petchey said he would speak up for Givens if it was necessary.

Orient's Phil Hoadley and Harris were also booked. The referee was prison officer Ronald Crabb from Exeter.

SHEFFIELD WEDNESDAY 2, LUTON TOWN 2
Gate 31,391
December 27th 1971

A MASSIVE Christmas crowd roared for Wednesday, but it was Luton who scored first in this festive thriller. Givens put the Town ahead in the 35th minute, and Luton held their lead at half time.

They went in thinking this was their lucky ground, for the previous season they had won 5-1 at Hillsborough.

But four minutes after the break Tommy Craig scored from the penalty spot after Nicholl had been booked for handling.

Holsgrove put Wednesday into the lead, but with four minutes to go Anderson equalised. Referee Matthewson of Worsley also booked Wednesday's Rodrigues and Joicey.

LUTON TOWN 2, MILLWALL 1.
Gate 15,113
January 1st 1972

THE TOWN went into the new year with a win over promotion-conscious Londoners Millwall, who they knocked out of second place in the table.

Chris Nicholl put Luton ahead in the 20th minute and leading scorer Anderson made it 2-0 before half time.

But Millwall were full of fight and little Derek Possee, who usually manages to score against the Town, pulled one back.

Even so, Luton hung on, and director Eric Morecambe celebrated with the team in the dressing room with a New Year bottle of champagne. Supporter of the Year, Mrs. Molly Miles, chipped in with a Christmas cake.

PRESTON NORTH END 0, LUTON TOWN 1
Gate 12,844
January 8th 1972

FOR SHEER suspense, this was Luton's high spot of the season. Preston were just above them in the table, and Luton could hardly have expected much more than a point at Deepdale.

But Alan Slough put them ahead in the 12th minute, and from then on Luton sat back and slugged it out.

Tony Read saved a penalty as Preston threw everything they had into the match. But Luton hung on.

Chris Nicholl was outstanding in the Town's defence, and again he had able assistance from John Moore.



FULHAM 3, LUTON TOWN 1
Gate 11,328
January 22nd 1972

AFTER the previous week's good win at Preston, Luton went back to square one with a disappointing defeat at Fulham.

Two goals by the nippy little Johnson sent Luton reeling in the first half, but things began to look up when Anderson narrowed the gap in the 58th minute.

In spite of their concerted efforts Luton could not get back on terms, but they were certainly not as bad as the 3-1 result looked when Barrett banged in a 90th minute decider.

The referee was the jolly Mr. Roger Kirkpatrick of Leicester.

LUTON TOWN 1, QPR 1.
Gate 17,280
January 29th 1972

LUTON could not believe their ill-fortune when Francis put Rangers one up in five minutes at Kenilworth Road.

But in the 21st minute John Ryan, after one of his famous overlaps, thrashed in his first goal of the season. It could not have come at a more opportune time for the Town.

We were given large doses of the Marsh magic, but he overdid things from time to time, especially the tripping himself in the box bit. Referee Wynn of Wolverhampton was not fooled.

LUTON TOWN 1, OXFORD 2.
Gate 9,792
February 5th 1972

OXFORD, always a team of fighters, gave Luton a lesson in aggression.

Skeen put them ahead right on half time, and Luton went in for the break on the wrong end of a home defeat.

Vic Halom equalised nine minutes into the second half, but within a minute Atkinson put Oxford back ahead.

The double-blow was too much for the Town and even the injection of Jimmy Ryan for Anderson could not sway the balance.

CARLISLE 0, LUTON TOWN 0.
Gate 8,731
February 12th 1972

CARLISLE is a long way to go for a goalless draw, but Luton were thankful for the point after their recent poor results.

Viv Busby made his comeback after his loan period to Newcastle, and he looked a sharper player for this experience with the First Division club.

He had a first-half goal disallowed, and that bit of bad luck set the rot in the Luton attack.

Hindson went on for Givens in the 80th minute, but Luton could not raise their game to grab a goal.

Their spirits were not brightened by the power cut that plunged them into semi-darkness when they were getting changed. But it was a good, hard-earned point.

LUTON TOWN 1, SUNDERLAND 2.
Gate 10,994
February 19th 1972

LUTON'S home defeat at the hands of Sunderland meant they had taken only two points from the past 10 at stake. They were slumping in the bottom half of the table, and once again there began to be gloomy forecasts of relegation.

Despite Pitt scoring for the visitors in the sixth minute, Luton played most of the attractive football in the first half. Even so, they could not score. It was the old, old story of chances being created and then squandered.

In the 74th minute Tueart secured the points for the Northerners, and a goal from Chris Nicholl three minutes from the end was no more than a consolation for Luton's earlier efforts.

CHARLTON 2, LUTON TOWN 0
Gate 7,941
February 26th 1972

WHAT A miserable match this was from Luton's point of view. They were rarely in with a chance of pulling anything out of the bag.

The match marked the comeback to the side of goalkeeper Keith Barber who again replaced Tony Read. And it was far from a happy return for him.

He was rather obviously impeded when Rogers hit a first half corner straight into the net, and had no chance of stopping a Paul Went penalty in the second half.

The match saw the Londoners do the double over Luton. Busby was replaced by Halom in the 58th minute, but still Luton could do nothing on one of their lowest days of the season.

LUTON TOWN 0, WATFORD 0.
Gate 10,816
March 3rd 1972

YOU CAN tell what sort of a season Luton were having when the ground was only just over a third full for the local derby against rivals Watford.

But the match was never as poor as the score suggests. Watford provided some early thrills, and missed a couple of golden chances of going ahead.

Luton weathered the storm, but could not raise their game to pull something out against their struggling neighbours.

Anderson replaced Givens in the 64th minute. World Cup referee Jack Taylor handled the game superbly.

LUTON TOWN 1, BURNLEY 0.
Gate 8,490
March 18th 1972

BURNLEY, who had looked such a good side early in the season, went through a bad patch and Luton took advantage with a narrow win in front of a pathetically small crowd.

Garner had a good match for the Town and John Moore, who had missed the previous match against Watford was sub. He was not needed.

Viv Busby scored the goal in the 37th minute.

BIRMINGHAM 1, LUTON TOWN 0.
Gate 34,395
March 25th 1972

IN FRONT of a huge, promotion-hunting crowd, Luton gave a fine account of themselves at St. Andrews. And they will never forget the manner in which they went down.

After holding off the threat of the Blues for almost the entire match, Bob Hatton scrambled a goal in the last minute.

John Ryan did a good job for Luton against the tricky Taylor, the former Bolton winger. Moore was again the unused sub.

MIDDLESBROUGH 0, LUTON TOWN 0.
Gate 11,720
March 31st 1972

OH DEAR! Another goalless draw. This was a poor show by the Town, even though they brought a point back. Nothing seemed to go right, and with Maddren and McMordie turning in accomplished performances for the Boro Luton found it hard going.

Nobby Stiles made a longer appearance for the Northerners than he did at Luton earlier in the season, but he was pulled off in the 72nd minute.

Five minutes earlier Don Givens took his track suit off to give John Moore a run, but it was a day where goals were hard to come by. They ended as they began.

LUTON TOWN 3, SHEFFIELD WEDNESDAY 1
Gate 9,121
April 1st 1972

LUTON'S fans had not had a great deal to cheer about, although they had been pulling a few points, when Sheffield came to Kenilworth Road.

And when that man Joicey popped up with a well-taken goal in the 12th minute, Luton found it hard to retaliate.

That's the way it was at half time. And that's when it turned into a sensational match — for Vic Halom, the Luton centre forward who had not had the best of luck when it came to grabbing goals.

In 12 dramatic minutes Vic smashed home a memorable hat-trick to give the Town a win that had never seemed on the cards.

Vic began his destruction of the Wednesday in the 76th minute. Ten minutes later he banged in number two, and two minutes after that he raced through and cracked in a superb clincher.

The fact that Sheffield had a local lad in goal had nothing to do with Halom's dynamic finishing which the Luton fans had been waiting to see.

LUTON TOWN 0, HULL 1.
Gate 9,763
April 4th 1972

IT HAD looked as if the Town had weathered the Easter period well. Then Hull came to Kenilworth Road.

Northern Ireland skipper Terry Neill commanded his side well in the first half, and Luton could not break through the barrier.

Ken Knighton, the former Preston midfielder man, banged in a good goal in the 57th minute, and that was that.

Luton tried to re-arrange their formation by sending on John Moore for Jimmy Ryan, but it did not work. Mike Keen played an important role in the Luton side, while Ken Wagstaffe was outstanding for Hull.

LUTON TOWN 1, BLACKPOOL 4.
Gate 7,270
April 8th 1972

BLACKPOOL got their own back. As if remembering that freezing day in November they came south and sorted Luton out.

Dyson, Simpkin and Burns gave the Pool a 3-0 half time lead, and Luton seemed sunk.

But Mike Keen made a valiant attempt to rouse the side by banging a goal early in the second half.

It looked as if this might do the trick as Luton raided the Blackpool goal, but in a break-away Blackpool shot was diverted past Keith Barber by Alan Slough who, unfortunately, had had a hand in Burns' pre-half time goal.

And that was the end of the Luton challenge. Wainwright returned to the Luton side for this match and Moore replaced Court at half time.



PORTSMOUTH 0, LUTON TOWN 3.
Gate 8,552
April 15th 1972

IN AN effort to do something about their inability to score goals Luton shoved John Ryan



into a striking position. And he loved it.

Don Givens banged home a 15th minute penalty after John had missed a glorious chance, but the Luton defender was not to be cheated of his goal.

In the 31st minute he raced through to head one in, and in the second half banged in a second.

Luton left from Fratton with their easiest away win of the season. Ryan had added a sparkle of champagne to the flat-beer of the attack. He scored a second in the 66th minute. Afterwards he said: "I loved it up front, I'd like another crack at it."

SWINDON TOWN 2, LUTON TOWN 1.
Gate 8,960
April 18th 1972

THE TALE of Luton's defeat at Swindon was one of bad luck. After taking a first-half lead they capitulated in the second half and came home with nothing to show — except a few bruises.

Don Givens put Luton ahead in the 28th minute with a scorching shot, and Luton hung on to their lead until half time.

But in the 60th minute Don Rogers decided to take a hand, and scored a splendid goal from a solo effort.

It still looked as if Luton would hang on, but in the 77th minute goalkeeper Keith Barber took a tumble making a brave save, and took a knock on his spine. Five minutes later, his injury hampering him, he dropped a cross from the left, and Horsfield scored the winner.

The match had been postponed from earlier in the season when the Swindon pitch, which is six feet lower than the surrounding ground, had been waterlogged.

LUTON TOWN 0, BRISTOL CITY 0.
Gate 8,329
April 22nd 1972

LUTON'S smallest gate of the season braved a cold afternoon and were bored stiff for their trouble.

With goals still hard to come by, the fans had to be content with watching good defensive displays by Garner and Moore, and with seeing Barber acquit himself well in goal.

John Ryan did a good job in his new midfield position and Keen made a distinctive last appearance at home for Luton.

Bristol almost scored three minutes from the end, but Keen blocked Bartley's effort to save Luton's pride.

CARDIFF 1, LUTON TOWN 1.
Gate 12,587
April 29th 1972

THE POINT was a desperate one for the Welshman who could have gone down had Luton beaten them and Charlton had won.

They went ahead through Warboys in the 41st minute but Robin Wainwright equalised two minutes later with Luton's last goal of the season.

Luton's man of the match was goalkeeper Keith Barber to whom the Town owe their thanks for the point.

John Ryan again played in midfield and Peter Anderson replaced Gordon Hindson in the 70th minute.

We've got loads more to offer!

Not only do we supply all models
of FORD trucks and vans,
we also provide a TOTAL
back up service to keep them
running efficiently and
economically.

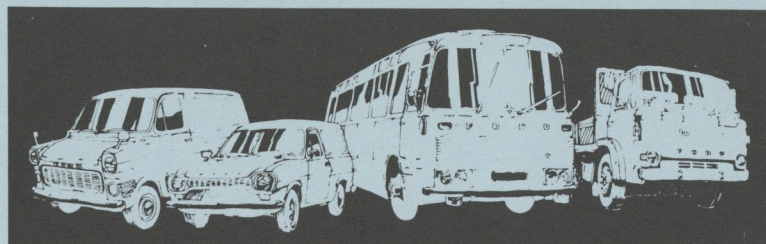


Tricentrol TRUCKS (A5) LTD

THE SQUARE
DUNSTABLE
TELEPHONE 64381
FOR
TRUCKS & VAN SALES
TRUCK & VAN RENTAL
LIGHT & MEDIUM VAN
SERVICE & REPAIR.
DIESEL FUEL INJECTION
SERVICE.

A5 GARAGE
HOCKLIFFE
TELEPHONE 250/617
FOR
24 HOUR BREAKDOWN
24 HOUR FILLING STATION
USED CAR SALES

GROVEBURY ROAD
LEIGHTON BUZZARD
TELEPHONE 4151
FOR
HEAVY VEHICLE SERVICES & REPAIR
FORD TRUCK PARTS &
DELIVERY SERVICE
BODYWORK AND PAINTING



THE BRANCHES

AYLESBURY

We are now at the beginning of the 1972/3 football season, and nearing the commencement of our first full membership year of our branch of the Supporters Club. For our supporters there was no 'Close' season as we have already held a film show for the junior members, and furthermore a Quiz-ball and Sports Forum is to be held in July featuring a challenge from a football league side against a Luton Town side. Presiding will be Eric Morecambe. Our committee are always anxious to expand our activities in order to meet with the ever changing trends and tastes of members and supporters alike.

Our branch committee has already swollen to 12 members and our travel manager has assured us that he is contemplating running coaches to all home and away fixtures within reasonable travelling distance.

As soon as the playing season gets under way, a regular column in a local weekly Bucks. newspaper will feature all forthcoming activities and attractions, and by using this media it is hoped to keep in close contact with all our branch members.



We hope the coming season is going to be a rewarding one for us, and would like to take this opportunity to wish the players and staff of Luton Town F.C. every success for the future.

COMMITTEE MEMBERS WHO'S WHO
Peter Taylor Tel. Whaddesdon 677 (Chairman)
Derek Baker Tel. Aylesbury 85272 (Secretary)
Peter Adams. Fred Simmonds Tel. Aylesbury 82728. Ron Mortimore. Ernie Wilson. Tel. Aylesbury 81605. E. Connelly. Dave Kesley. Tel. Aylesbury 82826. John Wheeler. Tel. Aylesbury 83954. Pete & Haydon Edwards. Tel. Aylesbury 86278.

BLETCHLEY

The seven strong committee of the Bletchley branch is made up by the following members:-

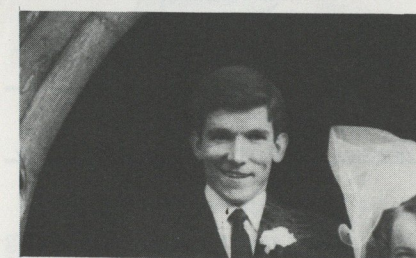
Geoff Kemp — Chairman
Dorothy Gammage — Treasurer
David Keys — Secretary
Keith Nichols, Derek Robinson, Alan Christie and David Jones.

The foundations for a successful Supporters Club have been laid by a hard working committee in Luton and it is the intention of the Bletchley committee to keep area members in contact with club activities. Members are urged to make full use of the facilities available to them and also to encourage all their friends who are Luton fans but as yet have not joined the 'Family' of Luton Town. To be a member is to belong to the Club. The success of the Quiz-ball in March shows the willingness of the Football Club personalities to visit the branch and the committee hope that area members show reciprocal enthusiasm at future activities.

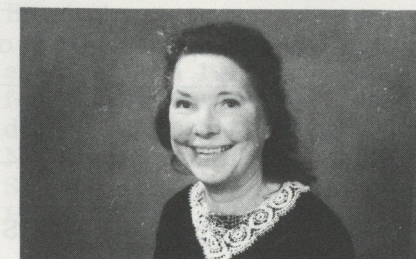
As the Town enters its third and we hope, most rewarding season in Division Two we would like to take this opportunity of congratulating Mr. Haslam on his appointment and wishing him, his players and staff the success that they plan for the Club.



CHAIRMAN



SECRETARY



TREASURER

The committee would like to thank all members in the area for thier support in the past season with the hope that they have all renewed their membership for 1972/3.

NORTH HERTS and SOUTH BEDS

John Moore — Honorary President
Our thanks to John for his efforts on the branch's behalf, we think he's great.



Mick Ryall — Chairman
A driving force in the branch. Member of the Vice-Presidents club. Always the congenial host at all functions.

John McCracken — Secretary
A Scot but nevertheless a first class Secretary any committee would be pleased to have. A staunch supporter of good football.

Tony Long — Treasurer
Also serves on the main committee of the Supporters Club where he has given a great deal of his own time to keep running the successful discos.

Gordon Rollins
His forte is in the organisation of social functions. Unflappable, a good trait especially where social activities are concerned.

Ron Dilley
Member of the social committee, whose experience is invaluable.

Heather Dilley
Brings femininity and glamour to the branch. Also on the social Committee.

Alan Ayres
Member of the speical projects committee always ready willing and able to tackle all types of projects.

Len & Colin Bourne
Brothers that bring a great deal of valuable experience to the branch.

Gerry Avis
Responsible for travel arrangements, especially good at organising coaches to away matches.

Ken Cates
Member of the special projects committee handles the newsletters and publicity.

The committee are hard working, enthusiastic and the atmosphere at meetings whilst friendly is never dull.

A lot of personal time was spent during the past year organising many successful events. Success breeds success, it is said. So looking ahead — many more events are planned, each one hopefully will be better than the last. With a bit more effort, more newsletters will keep members better informed. All energy directed at supporting our football club and contributing in all ways to help Luton to every success in the future.

UNIVERSAL TRAVEL SERVICES

WE MEAN BUSINESS WHEN IT COMES TO YOUR BUSINESS



UNIVERSAL TRAVEL SERVICES LTD.

British and Continental Holidays

Rail * Sea * Air * Coach Travel

25 WEST SIDE CENTRE, LUTON 25432

Also at Sun Street, Hitchin 50246

"ROSE TREES FOR THE GARDENS OF THE WORLD"



Awarded the R.N.R.S. Championship Trophy

Our world famous Roses can be bought from our nurseries on the main road between Hitchin and Letchworth.

Self selection, attractive prices, real quality in Roses and other garden plants.

Open most weekends.

AWARDED HIGHEST HONOURS

HARKNESS ROSES • HITCHIN



JOHN ASTON,

JOHN ASTON, winger son of a full back father, is another fine acquisition for the Town. John played for Manchester United since he left school until he came to Kenilworth Road this summer at the age of 25.

An orthodox winger, John was the television darling of the nation when he played an outstanding part in United's European Cup win over Benfica at Wembley four years ago.

Since then he has been in and out of the United side, but has remained a first-rate player and a great club man.

It was only Town manager Harry Haslam's loyal friendship with John's father that brought him to Luton after several top clubs had enquired after him. Mr. Haslam and John's dad were old club mates at Old Trafford and they both acted as best man at the other's wedding.

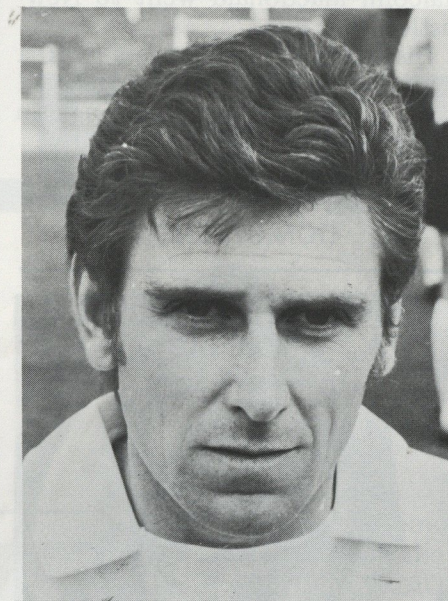
John is a fine ball player from either side of the park, and he is expected to be one of the Second Division's outstanding players.

FOOTBALLERS come and footballers go. Every season every club welcomes new faces and says good-bye to old stalwarts.

Just this has happened at Luton during the close-season. Here we take a look at the new fellows and remember the old.



RODNEY FERN,



BOBBY THOMPSON,

BOBBY THOMPSON is another great find for Luton. The former England left back played hundreds of League games for Wolves before he moved across the Midlands to Birmingham.

Bobby played for his country eight times in 1964 and 1965. Before that he was skipper of the Under 23 side. For his country he faced Northern Ireland twice, the United States, Portugal, the Argentine, Holland, Belgium and Wales.

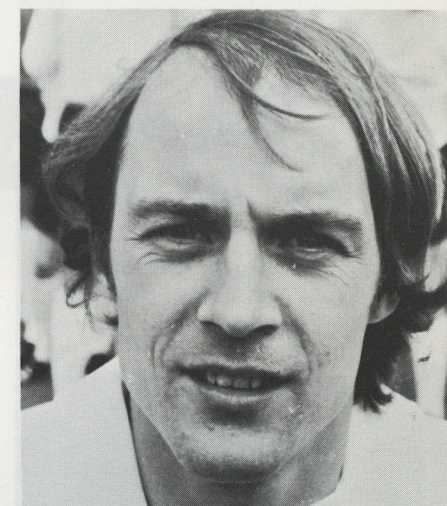
A fast and decisive full back, he will please the Luton fans with his Fred Jardine-ferociousness and his Terry Branstons-aggression. He is a defender in the modern idiom of the game, who is not afraid to move forward and attack when the opportunity presents itself.

ARRIVALS

RODNEY FERN was Luton's big catch of the close season. When he joined from Leicester the fee was said to be in the region of £50,000. This was never confirmed, but if it was, Luton created a club spending record.

By strange coincidence Rodney, a strong, free-scoring inside forward, went to the same school in Derbyshire as Vic Halom. They played in the same school team, and now they look like teaming up again in a new-look forward line.

Leicester was Rodney's only club, and he made almost 200 League and Cup appearances for them.



JOHN FAULKNER

JOHN FAULKNER is not exactly one of Luton's new faces. He came at the end of last season from Leeds when Chris Nicholl went to Aston Villa. But he comes under the "new" category for the purposes of introducing him to the Town fans.

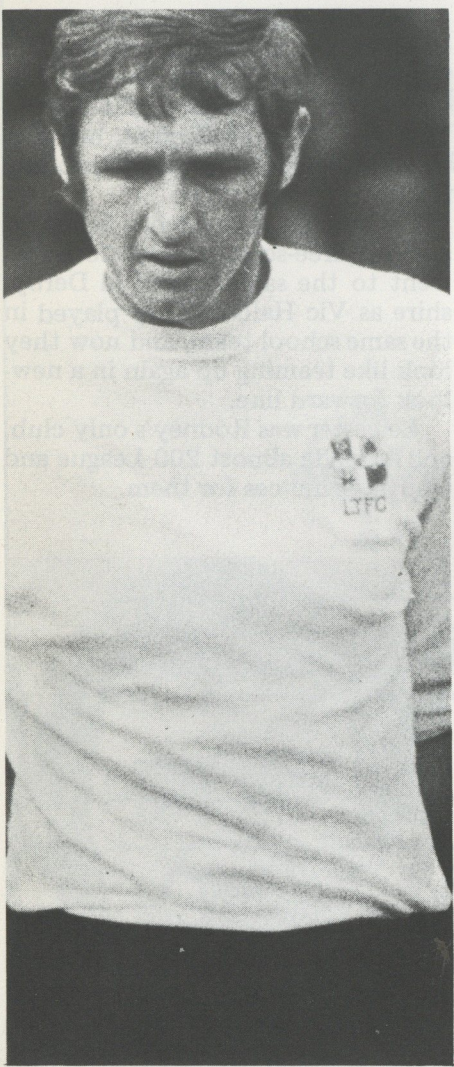
A couple of seasons ago John was playing with Sutton in the Isthmian League — playing against sides like Luton's neighbours Hitchin Town.

Then Sutton had a great run in the FA Cup, and they met mighty Leeds at their Surrey ground. Leeds scored six, but centre half Faulkner had a great game.

On the following Monday Leeds snapped him up, and he made a fairy tale entry to the First Division. He had made many appearances as Jack Charlton's deputy when Luton stepped in.

He looks like becoming a first team favourite.

& DEPARTURES



MIKE KEEN

MANY Luton fans will be sorry to see the departure of Mike Keen, who hardly missed a match in his three seasons at Kenilworth Road. Mike, who was club skipper, was a whole-hearted player in every sense of the word. After a distinguished career with Queens Park Rangers, Alec Stock brought him to Luton, where Mike put the club before everything else. When he was not playing well, he was man enough to take "stick" from the crowd. When he was playing well he was a delight to watch. His tackling was near-perfect and his distribution tuned to a fine art. He was given a free transfer at the end of last season and has joined rivals Watford in their bid to push back into the Second Division. His followers at Luton will wish him every success. He was a real loyalist.

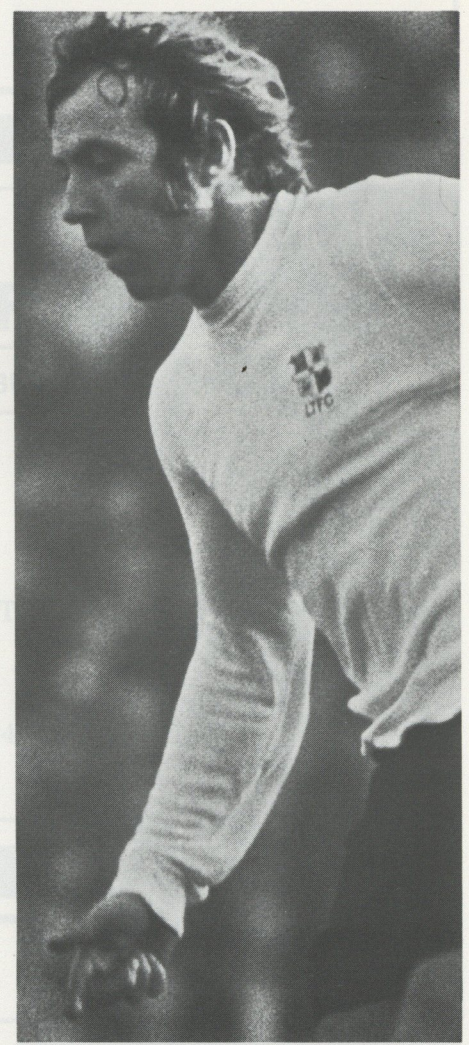
DON GIVENS left Luton after two seasons this summer. He went to QPR for a fee in excess of £30,000. Like Mike Keen, Don was almost ever-present in Luton's line-up. Sometimes he played in midfield, sometimes in attack. But wherever he was cast he was a ball-player of speed and ability. He is still in the middle of an impressive career as an Eire international. He has played football all over the world, and during the close season he played for his country in the Brazil Independence Cup. A ready goal-snatcher, Don became Luton's penalty-taker when Malcolm Macdonald went to Newcastle a year ago. His transfer to Rangers was a drawn-out affair which was delayed by a medical. It went through in July.

DON GIVENS



DAVID COURT

DURING the summer the Evening Post published a story that David Court, given a free transfer by the Town at the end of last season, had signed on the dole. This was one of the biggest mysteries in recent footballing history. David was at Luton for two seasons. He played most of that time in the first team where he always gave everything he had. On many occasions he was man of the match, and his midfield work-rate and distribution were often a treat to watch. But he did not figure in Mr. Haslam's plans for the future and he was given the freedom to find a new club. The fact that nobody was after him during the summer will take some swallowing. David, as Luton fans will testify, can do many clubs a good turn yet. He still has a lot of football. An interesting fact is, that when he joined the Town after being with Arsenal since he left school, he signed for a record fee of £35,000. And he signed at the bedside of then Luton chairman Tony Hunt who was a patient in the Luton and Dunstable Hospital.



DARE YOU RISK WINNING THE TREBLE CHANCE ?

LUTON TOWN DEVELOPMENT ASSOCIATION
Regd. under B. G. & L. Act, 1963 (Sec. 45)

Week 1 August 14-19 1972

Your Opportunity to Win the
Treble Chance Jackpot
This ticket may give you one FREE Line on Vernons Treble Chance

£150	SPOT PRIZES Hundreds of Chances to Win
£70	INSTANT BINGO
£50	ANY FULL HOUSE From the numbers inside ticket
£10	ANY LINE ACROSS From the first 14 numbers
£10	ANY HOUSE With 2 nos. or less marked off
£50	LUCKY NUMBERS 10 £3 Prizes - 10 £2 Prizes

5p Promoter: K. Ball 231 Dunstable Road, Luton 5p

Do you know at least ten friends or workmates who would risk the dangers of winning VERNONS TREBLE CHANCE JACKPOT? You would also have to put up with the problems caused by deducting 15p in the £ expenses and winning a 25% bonus of your friends Treble Chance dividends.

Last season
VERNONS TREBLE CHANCE WINNERS
shared a fantastic total of
OVER £15 MILLION
With 14 winners of over £100,000.
26 winners of over £ 50,000.
60 winners of over £ 20,000.
and 126 winners of over £ 10,000.

If you want to join the "BIG WINNERS" this season, and have the chance of watching all Luton Town's home matches FREE, then drop a line to Mike Skinner, 231, Dunstable Road, Luton, Beds. or ring Luton 30748.

A WELCOME TO THE NEW CLUBS

NOTTINGHAM FOREST, HUDDERSFIELD, ASTON VILLA and BRIGHTON.

Perhaps the biggest surprise of all is the comeback of Brighton. For most of last season the Seaside had played second string to the formidable challenge of Bournemouth and Notts County.

But they proved they had the staying power under the manager-ship of Pat Saward, and the Goldstone Ground, with which Luton supporters have strong memories of recent Cup battles, was straining at its seams as the fans roared Albion into the Second Division with a great final burst.

One of the stars of Brighton's promotion battle was former Birmingham and Chelsea forward Bert Murray. But one that might not be seen at Luton this season is Kit Napier who was rumoured to be on the move, and who may well have found pastures new by the time of going to press.

Undoubtedly the biggest attraction at Kenilworth Road this season will be the visit of mighty Aston Villa, at long last on their way back to the fore in British soccer.

And with them will be former Luton favourites Bruce Rioch and centre half Chris Nicholl.

Manchester United were thought to have an interest in Bruce during the close season, but Villa manager

Vic Crowe warned United — and any others who may be eyeing his players: "Keep off".

Villa also have expensive goal-scorer Alun Evans from Liverpool — as well as that exciting centre forward Andy Lochhead and goal-keeper Jim Cumbes, who was called back from his summer cricket duties with Worcestershire to start training.

Huddersfield and Nottingham Forest linked to drop out of the First Division. The Yorkshire club have been involved in a phenomenal amount of buying and selling since the end of last season.

For a start they sold £100,000 Trevor Cherry to Leeds. And that threw a speculative spanner into the Elland Road works. For nobody knew during the summer months just where the new wing half was going to play.

But that was not Huddersfield's problem. They were set back on their heels when Liverpool agreed to buy Frank Worthington — and then threw the deal out of the window after Frank had failed a medical. West Ham then stepped into the reckoning for Worthington.

Huddersfield also sold goalkeeper David Lawson to Everton and winger Colin Dobson to Bristol City. Their biggest capture was Manchester

United's centre forward cum-mid-field man Alan Gowling for a bargain £60,000.

Forest will be well remembered by the Town fans. Two seasons ago the two clubs fought a couple of stirring League Cup battles, home and away, before Forest won 4-3 in a real thriller at Kenilworth Road.

In the 1-1 draw at Nottingham the goalpost collapsed in the first half, and Macdonald scored the equaliser in the second. Mac scored a hat-trick in the return, but Luton could not stop Forest.

During the close season Forest were negotiating for the sale of forward Peter Cormack to Liverpool, and several other members of the disappointed midlands side were on the list. These were rumoured to be full back John Winfield, half back Bob Chapman and forward Barry Lyons.

Sat, Sept. 2 — Huddersfield (home).
Sat, Sept. 9 — Notts Forest (away).
Sat, Sept. 16 — Brighton (home).
Sat, Nov. 18 — Villa (away).
Sat, Jan. 20 — Huddersfield (away).
Sat, Jan. 27 — Notts Forest (home).
Sat, Feb. 10 — Brighton (away).
Sat, April 21 — Villa (home).



BRUCE RIOCH old favourite



CHRIS NICHOLL seen again



ALUN EVANS joined Villa



ALAN GOWLING Huddersfield capture



TREVOR CHERRY where will he play?

FACTS & FIGURES

LUTON TOWN FOOTBALL AND ATHLETIC CLUB LIMITED
70-72 Kenilworth Road Luton LU1 1DH. Telephone Luton 23151/2.

MANAGER: HARRY HASLAM. CHIEF COACH: ROY McCROHAN. COACH: KEN WHITFIELD. PHYSIOTHERAPIST: REG GAME.
SECRETARY: R. READHEAD. ASSISTANT SECRETARY: J. WILKINSON. ACCOUNTANT: J. WHITING.

Pre Match information and Match Scores: Telephone Luton 33010.
Box Office for Match and Rail Bookings: Telephone Luton 23151/2.

LUTON TOWN DEVELOPMENT ASSOCIATION
231, Dunstable Road Luton Beds. Telephone Luton 30748.
MANAGER: MIKE SKINNER.

LUTON TOWN SUPPORTERS CLUB & CLUB SHOP, 125, OAK ROAD LUTON BEDS.
All enquiries to the Secretary, J. Wilkinson. Telephone Luton 23151/2.

THE HATTERS CLUB, MAPLE ROAD, LUTON, BEDS.
MANAGER: LES RICHARDSON
All enquiries and Bookings: Telephone 21726.

The Club was formed in 1885 and turned Professional in 1890.

<p> GROUND: Excelsior, Dallow Road (1885-1897)Dunstable Road, (1897-1905) Kenilworth Road (1905-Present). HONOURS: Highest Postion in Division 1. 1957/8 Division 2 Runners-up 1954/5 Division 3 Runners-up 1969/70 Division 4 Champions 1967/8 Division 3 (South) Champions 1936/7 Division 3 (South) Runners-up 1935/6 F.A. Cup Finalists 1958/9 Best Position attained in the League Cup 4th Round 1963 Record Victory: 12-0 v Bristol Rovers Division 3 (South) 13th April, 1936 Record Defeat: 1-9 v Swindon Town Division 3 (South) 28th August, 1921 Highest Number of League Points attained 66 Division 4 1967/8 (Equalled the Division 4 record) Highest Number of League Points ina season 103 Division 3 (South) — 1936/7 Highest Individual scorer in a season Joe Payne 55 Division 3 (South) — 1936/7 Highest Goals total aggregate 243 Gordon Turner — 1949/64 Player Attaining Highest Number of Caps George Cummins 19 for Eire Highest Number of League appearances R.H. Morton 494 — 1948/64 Record Transfer fee received £180,000 from Newcastle United for Malcolm Macdonald — May 1971 Record Transfer fee paid Approximately £50,000 to Leicester for Rodney Fern — June 1972 Managers of the club since 1945 Dally Duncan, Syd Owen, Sam Bartram, Bill Harvey, George Martin, Allan Brown, Alec Stock and Harry Haslam. Ground Capacity 31,000 (17,000 covered) Record attendance 30,069 v Blackpool on March 4th 1959 in the F.A. Cup 6th Round replay </p>	
---	--

LEAGUE

OPPONENTS	VENUE	RESULT	GOALS F. A.	ATTENDANCE FIGURES	LUTON TOWN SCORERS
Norwich	H	D	1 1	12,428	Givens (Pen)
Burnley	A	L	1 2	13,333	Busby
Preston	H	D	1 1	11,772	Anderson
Oxford	A	D	1 1	10,490	Givens
Orient	A	D	0 0	8,703	
Birmingham	H	D	0 0	14,678	
Millwall	A	D	2 2	12,433	Anderson (2)
Middlesbrough	H	W	3 2	13,001	Halom, Wainwright, Anderson
Fulham	H	W	2 0	14,017	Wainwright, Halom
Hull	A	D	0 0	13,904	
Swindon	H	D	0 0	13,423	
Norwich	A	L	1 3	22,558	Slough
Q.P.R.	A	L	0 1	15,858	
Carlisle	H	L	0 2	11,963	
Sunderland	A	D	2 2	17,979	Nicholl, Anderson
Charlton	H	L	1 2	11,011	Keen
Watford	A	L	1 2	14,000	Halom
Blackpool	A	W	1 0	8,432	Givens
Portsmouth	H	W	3 2	9,910	Keen, Hindson, Anderson
Bristol City	A	D	0 0	12,921	
Cardiff	H	D	2 2	10,606	Anderson, Givens (Pen)
Orient	H	W	2 0	9,193	Slough, Givens
Sheffield Wednesday	A	D	2 2	31,391	Givens, Anderson
Millwall	H	W	2 1	15,113	Nicholl, Anderson
Preston	A	W	1 0	12,844	Slough
Fulham	A	L	1 3	11,328	Anderson
Q.P.R.	H	D	1 1	17,280	John Ryan
Oxford	H	L	1 2	9,792	Halom
Carlisle	A	D	0 0	8,731	
Sunderland	H	L	1 2	10,994	Nicholl
Charlton	A	L	0 2	7,941	
Watford	H	D	0 0	10,816	
Burnley	H	W	1 0	8,490	Busby
Birmingham	A	L	0 1	34,395	
Middlesbrough	A	D	0 0	11,720	
Sheffield Wednesday	H	W	3 1	9,121	Halom (3)
Hull	H	L	0 1	9,763	
Blackpool	H	L	1 4	7,270	Keen
Portsmouth	A	W	3 0	8,552	Givens (Pen) John Ryan (2)
Swindon	A	L	1 2	8,960	Givens
Bristol City	H	D	0 0	8,329	
Cardiff	A	D	1 1	12,587	Wainwright
WATNEY CUP					
Colchester	A	L	0 1	8,186	
LEAGUE CUP					
Crystal Palace	A	L	0 2	13,838	
F.A. CUP					
West Ham	A	L	1 2	32,099	Givens

the season's match by match statistics

APPEARANCES

LEAGUE APPEARANCES													
	G	RB	LB	RH	CH	LH	OR	IR	CF	IL	OL	S	TOTAL
Tony Read	24												24
Keith Barber	18												18
John Ryan		38								4			42
Alan Slough		4	19	8		7		4					42
Don Shanks			23	2								3	28
Mike Keen				31				10		1			42
Chris Nicholl					32								32
John Moore				1		35						5	41
Jim Ryan							6			1		8	15
Peter Anderson							17		5		11	4	37
Viv Busby							5	3	2	4	4	4	22
David Court								21		2		8	31
Vic Halom							2	4	25	1		2	34
Don Givens									8	29	4	1	42
Gordon Hindson											22	1	23
Robin Wainwright								12		2	1	3	18
Alan Garner					10							2	12
John Faulkner												1	1

ATTENDANCES
and SCORERS

2nd DIVISION ATTENDANCES		
	Position	Attendances
Birmingham	2	679,075
Norwich	1	483,773
Middlesbrough	9	376,794
Sheffield Wednesday	14	358,819
Millwall	3	341,512
Sunderland	5	334,016
Cardiff	19	325,712
Bristol City	8	319,719
Preston	18	317,856
Q.P.R.	4	301,705
Hull	12	293,405
Swindon	11	285,162
Blackpool	6	283,152
Burnley	7	270,755
Portsmouth	16	250,270
Luton	13	239,070
Fulham	20	234,081
Watford	22	229,070
Orient	17	227,156
Charlton	21	219,027
Oxford	15	200,123
Carlisle	10	199,062

Although Luton Town ended in 13th position in the 1971/2 season, they were three places worse than that in the supporter stakes. They came 16th in attendances. Luton's average home attendance was 10,886, a drop on the previous season. The only club to top the million spectators mark last season was Liverpool. Finishing third in the First Division, they totalled 1,001,429 fans at Anfield. That is an average of 45,519 at each home match.

THE TOWN'S GOAL SCORERS

Luton Town scored 43 goals last season, with 48 against. Leading marksman was Peter Anderson who netted 10 in 37 appearances, four of which were as Substitute. Following is a breakdown of the goal getters.

Peter Anderson	10
Don Givens	8
Vic Halom	7
Robin Wainwright	3
Alan Slough	3
Chris Nicholl	3
Mike Keen	3
John Ryan	3
Viv Busby	2
Gordon Hindson	1

Luton's only hat-trick of the season came from Vic Halom. He scored it in 12 minutes in the home match against Sheffield Wednesday when Luton were trailing 1-0.
On only two other occasions did a Luton player score more than once in a game and they were both away from home. Peter Anderson banged in two in the 2-2 draw at Millwall, and John Ryan bagged two in the 3-0 win at Portsmouth.
Penalty taker was Don Givens. Three of his eight goals came from the spot.

Score every time
with the
LUTON NEWS

Read
Eric Pugh-
the man
who has his
finger on
the town's
pulse....



FOOTBALL LEAGUE FIXTURES
DIVISION TWO : 1972-1973
 All Saturday Matches Kick-off 3 p.m.

1972					
Aug.	12	Sat.	Cardiff City ...	A.....	
"	16	Wed.	League Cup 1 ...		
"	19	Sat.	Preston North End ...	H.....	
"	26	Sat.	Orient ...	A.....	
"	30	Wed.	Oxford United ...	H.....	
Sept.	2	Sat.	Huddersfield Town ...	H.....	
"	6	Wed.	League Cup 2		
"	9	Sat.	Nottingham Forest ...	A.....	
"	16	Sat.	Brighton & Hove A.	H.....	
"	20	Wed.	Portsmouth ...	H.....	
"	23	Sat.	Sheffield Wednesday	A.....	
"	26	Tues.	Swindon Town ...	A.....	
"	30	Sat.	Burnley ...	H.....	
Oct.	4	Wed.	League Cup 3		
"	7	Sat.	Blackpool ...	H.....	
"	14	Sat.	Sunderland ...	A.....	
"	21	Sat.	Hull City ...	H.....	
"	28	Sat.	Bristol City ...	A.....	
Nov.	1	Wed.	League Cup 4		
"	4	Sat.	Swindon Town ...	H.....	
"	11	Sat.	Portsmouth ...	A.....	
"	18	Sat.	Aston Villa (1)	A.....	
"	22	Wed.	League Cup 5		
"	25	Sat.	Carlisle United ...	H.....	
Dec.	2	Sat.	Fulham ...	A.....	
"	6	Wed.	League Cup Semi-Final		
"	9	Sat.	Queens Park Rgr. (2)	H.....	
"	16	Sat.	Millwall Athletic ...	H.....	
"	20	Wed.	League Cup Semi-Final		
"	23	Sat.	Middlesbrough ...	A.....	
"	26	Tues.	Sheffield Wednesday	H.....	
"	30	Sat.	Preston North End ...	A.....	

FIXTURES

MID-WEEK FOOTBALL LEAGUE
FIXTURES — SEASON 1972/73

Aug.	23	Wed.	Gillingham ...	H.....
"	30	Wed.	Brighton & Hove A.	A.....
Sept.	6	Wed.	Cambridge United ...	H.....
"	27	Wed.	Cambridge United ...	A.....
Oct.	11	Wed.	Millwall ...	H.....
"	18	Wed.	Watford ...	A.....
"	25	Wed.	Watford ...	H.....
Nov.	1	Wed.	Gillingham ...	A.....
"	8	Wed.	Northampton Town	H.....
"	15	Wed.	Southend United ...	H.....
"	21	Tue.	Charlton Athletic ...	A.....
"	29	Wed.	Colchester United ...	H.....
Dec.	5	Tue.	Northampton Town	A.....
"	13	Wed.	Colchester United ...	A.....
Jan.	3	Wed.	Millwall ...	A.....
"	10	Wed.	Brighton & Hove A.	H.....
"	17	Wed.	Orient ...	H.....
"	24	Wed.	Southend United ...	A.....
"	31	Wed.	Charlton Athletic ...	H.....
Feb.	7	Wed.	Watford (L.C.) ...	H.....
"	14	Wed.	Watford (L.C.) ...	A.....
"	28	Wed.	Northampton Tn. (L.C.)	H.....
Mar.	6	Tue.	Northampton Tn. (L.C.)	A.....
"	14	Wed.	Orient ...	A.....

FORTHCOMING EVENTS

The Entertainments Committee, under the Chairmanship of Malcolm Aubrey are currently engaged in arranging a programme of future events and it is hoped there will be something to appeal to all age groups and tastes. Bookings confirmed to date and which will be staged in the HATTERS CLUB are:-

Aug.	22nd	(Tues.)	Gentleman's Evening.
Sept.	17th	(Sun.)	Quizball & Sports Forum.
Sept.	28th	(Thurs.)	Caribbean Night (Dance).
Oct.	31st	(Tues.)	Halloween Dance.
Nov.	9th	(Thurs.)	Gentleman's Evening.
Dec.	20th	(Wed.)	Grand Xmas Dance & Cabaret.

On Saturday April 14th at the Queensway Hall in Dunstable there will be held our Buffet Dance & Cabaret at which the "PLAYER OF THE YEAR" and "SUPPORTER OF THE YEAR" winners will be announced and the trophies presented.

6-A-SIDE COMPETITION

Season 1971/2 was the inaugural year of the 6-a-side competition organised by the Supporters Club, and following its success it is now an event to be regarded as an Annual one. Whilst no definite date has as yet been established, it is assumed it will take place at Kenilworth Road during late April, but this of course will be dependant upon the Clubs commitments around this period.

Ambitious plans are tentatively being worked upon which once they are finalised and the names released should swell the attendance figures far, far in excess of those of last year.

Details of all Supporters Club events will regularly appear throughout the season in our column in each Home game's programme, so do keep watching and keep up to date with all the news, gossip, forthcoming events and happenings.

Connells

Property Consultants · Auctioneers · Surveyors · Estate Agents · Valuers

5 Upper George Street, Luton, LU1 2QY. Tel: 31261
 and at

Jansel House Parade, 656 Hitchin Road, Luton. Tel: 37069

62 Grosvenor Street · London W.1

Dunstable · Harpenden · Leighton Buzzard · Letchworth · St. Albans

Bedford · Hitchin · Bletchley · Aylesbury · Thame

surveyors to Luton Town Football Club

With branches in London, Hertfordshire,
 Bedfordshire, Buckinghamshire and Oxfordshire,
 we are able to offer the best available selection of

PROPERTIES OF ALL KINDS IN LUTON AND THE SURROUNDING COUNTRYSIDE

SPECIALIST DIVISIONS

Commercial and professional, Land finding, Architectural and associated services, Fine art and furniture sales and valuations, Project management, Property auctions, Overseas division, Country House Department, Management Department.



The Growth Makers

Tricentrol is a rapidly expanding
company trading world-wide.
And that includes the Home Counties.
Tricentrol recognise the enormous growth
potential in this thriving area.

Which is why they have such an important
stake in 12 local companies.
Watch Tricentrol grow.
Tricentrol know what success is all
about.

The Luton Motors Group Ltd., Luton • The Luton Motor Company Ltd., Luton
Lumo Cars Ltd., Dunstable • Tricentrol Trucks (A5) Ltd., Dunstable/Leighton Buzzard
Tricentrol PSV Sales Ltd., Dunstable/Leighton Buzzard
Lea Heating Merchants Ltd. Flitwick/Kempston • Simpsons Garden Supplies Ltd., Flitwick
G. E. Costin Ltd., Dunstable • Travel House (Luton) Ltd.

Tricentrol
INDUSTRIAL HOLDINGS LIMITED

Kings Road, Flitwick, Beds.